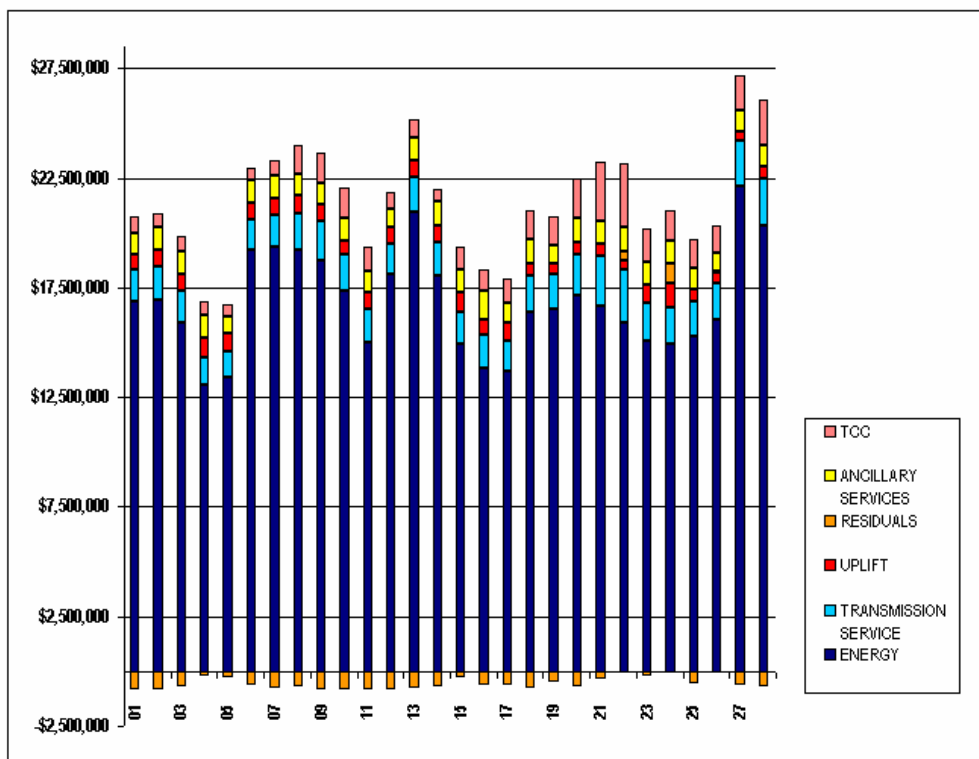


SETTLEMENTS REPORT
February 2006 Closeout Settlement
October 5, 2007

12-MONTH SETTLEMENT ADJUSTMENT MARKET COSTS ANALYSIS

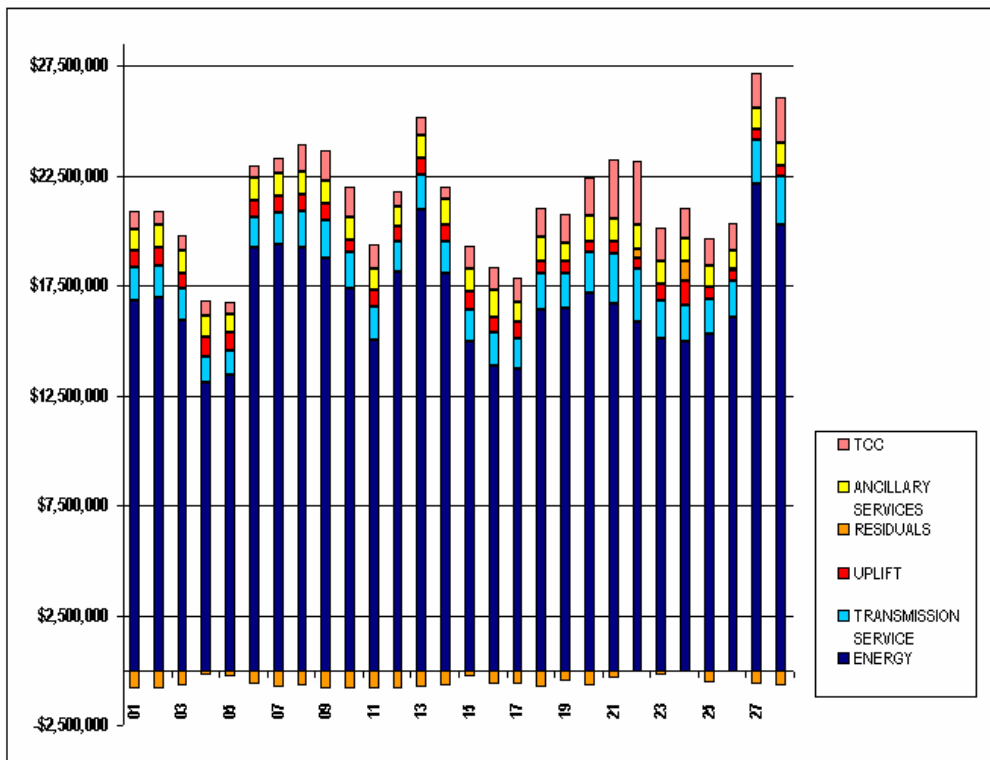
	MONDAY	TUESDAY	WEDNESDAY	THURSDAY	FRIDAY	SATURDAY	SUNDAY
			1	2	3	4	5
ENERGY			\$16,857,826.92	\$16,973,373.06	\$15,911,866.16	\$13,077,068.38	\$13,432,997.27
TRANSMISSION SERVICE			\$1,490,117.46	\$1,476,705.55	\$1,436,491.80	\$1,213,450.84	\$1,145,532.52
UPLIFT			\$641,709.33	\$777,546.34	\$755,881.41	\$913,845.65	\$827,980.20
RESIDUALS			(\$819,208.25)	(\$865,356.33)	(\$708,031.93)	(\$250,110.00)	(\$312,798.46)
ANCILLARY SERVICES			\$969,046.64	\$1,037,521.52	\$1,059,509.63	\$1,023,784.73	\$790,445.30
TCC			\$822,073.67	\$626,024.91	\$695,888.90	\$644,239.28	\$535,282.13
	6	7	8	9	10	11	12
ENERGY	\$19,229,505.44	\$19,394,602.92	\$19,235,575.69	\$18,758,737.49	\$17,359,238.76	\$15,027,674.65	\$18,138,993.58
TRANSMISSION SERVICE	\$1,399,756.43	\$1,442,154.88	\$1,666,679.90	\$1,758,179.21	\$1,683,687.22	\$1,496,561.95	\$1,398,262.02
UPLIFT	\$740,740.60	\$748,341.30	\$798,775.74	\$757,659.48	\$560,105.20	\$798,067.67	\$700,025.59
RESIDUALS	(\$639,346.33)	(\$769,456.62)	(\$725,563.86)	(\$823,409.76)	(\$871,934.96)	(\$872,139.19)	(\$844,548.13)
ANCILLARY SERVICES	\$1,057,008.52	\$1,020,761.30	\$1,019,774.11	\$1,007,100.33	\$1,026,381.79	\$965,537.12	\$879,718.90
TCC	\$654,367.18	\$713,712.48	\$1,254,478.32	\$1,366,094.12	\$1,381,629.27	\$1,104,689.24	\$719,155.94
	13	14	15	16	17	18	19
ENERGY	\$20,950,203.74	\$18,071,991.29	\$14,945,716.83	\$13,839,853.01	\$13,726,246.87	\$16,423,571.04	\$16,498,400.47
TRANSMISSION SERVICE	\$1,633,349.64	\$1,469,049.15	\$1,479,189.32	\$1,522,333.54	\$1,381,736.12	\$1,640,022.18	\$1,606,238.31
UPLIFT	\$713,019.50	\$766,225.58	\$862,556.87	\$706,354.41	\$770,111.87	\$544,662.17	\$497,091.83
RESIDUALS	(\$744,196.15)	(\$685,780.15)	(\$294,784.15)	(\$605,028.68)	(\$621,537.01)	(\$783,511.65)	(\$499,424.14)
ANCILLARY SERVICES	\$1,063,230.44	\$1,122,837.61	\$1,029,606.57	\$1,265,646.24	\$921,002.99	\$1,104,140.38	\$861,245.73
TCC	\$792,537.22	\$656,023.19	\$1,030,885.19	\$1,022,327.99	\$1,079,778.18	\$1,326,850.75	\$1,302,001.43
	20	21	22	23	24	25	26
ENERGY	\$17,176,770.70	\$16,674,904.35	\$15,897,470.98	\$15,099,397.06	\$14,965,910.62	\$15,308,261.64	\$16,074,145.88
TRANSMISSION SERVICE	\$1,841,248.04	\$2,265,082.66	\$2,401,647.42	\$1,736,155.69	\$1,650,144.53	\$1,565,227.31	\$1,633,787.37
UPLIFT	\$625,991.33	\$660,170.34	\$472,723.21	\$775,393.39	\$1,112,141.81	\$562,730.54	\$478,543.43
RESIDUALS	(\$691,463.69)	(\$341,985.03)	\$384,224.70	(\$214,029.64)	\$897,804.73	(\$589,258.46)	\$51,761.51
ANCILLARY SERVICES	\$1,162,418.39	\$1,052,347.11	\$1,139,133.29	\$1,045,028.29	\$1,037,912.98	\$984,722.79	\$822,153.46
TCC	\$1,744,644.03	\$2,674,899.97	\$2,874,183.07	\$1,522,572.21	\$1,378,481.43	\$1,246,810.64	\$1,246,698.75
	27	28					
ENERGY	\$22,154,979.70	\$20,308,228.85					
TRANSMISSION SERVICE	\$2,023,826.30	\$2,173,038.63					
UPLIFT	\$417,326.62	\$519,555.92					
RESIDUALS	(\$647,665.53)	(\$706,813.74)					
ANCILLARY SERVICES	\$1,015,825.76	\$1,023,462.50					
TCC	\$1,585,994.92	\$2,033,484.54					



SETTLEMENTS REPORT
February 2006 Closeout Settlement
October 5, 2007

CLOSEOUT SETTLEMENT MARKET COSTS ANALYSIS

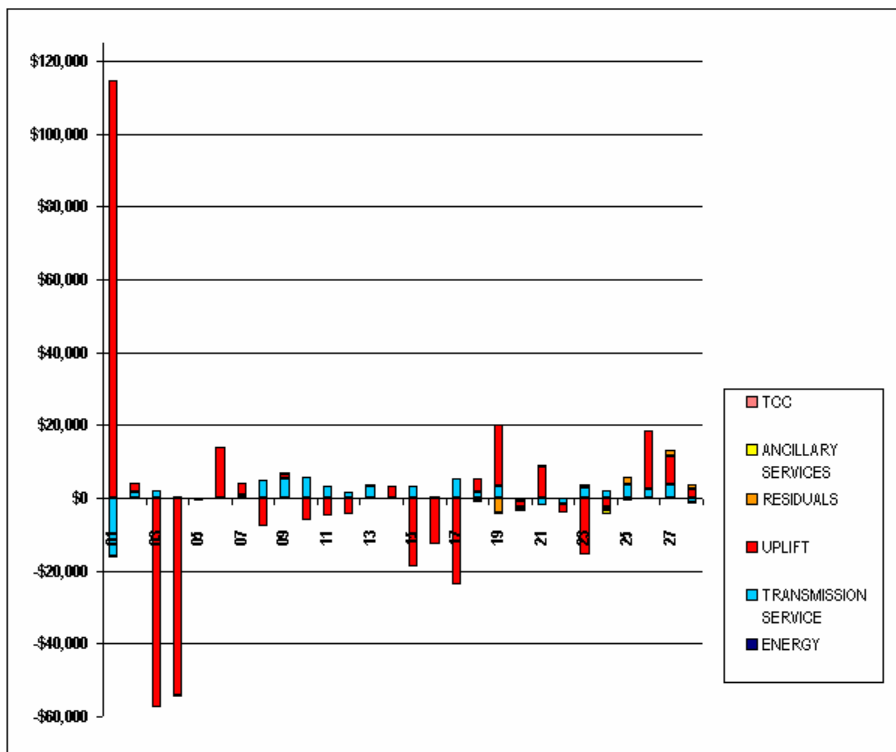
	MONDAY	TUESDAY	WEDNESDAY	THURSDAY	FRIDAY	SATURDAY	SUNDAY
			1	2	3	4	5
ENERGY			\$16,857,856.44	\$16,973,248.34	\$15,911,830.89	\$13,077,066.91	\$13,433,003.41
TRANSMISSION SERVICE			\$1,473,902.76	\$1,478,361.73	\$1,438,616.98	\$1,213,688.40	\$1,145,532.40
UPLIFT			\$756,529.34	\$780,067.91	\$698,338.25	\$859,565.21	\$827,255.18
RESIDUALS			(\$819,237.63)	(\$865,777.96)	(\$707,996.61)	(\$250,250.07)	(\$312,804.11)
ANCILLARY SERVICES			\$969,047.32	\$1,037,508.85	\$1,059,509.64	\$1,023,583.73	\$790,445.44
TCC			\$822,073.67	\$626,024.91	\$695,888.90	\$644,239.28	\$535,282.13
	6	7	8	9	10	11	12
ENERGY	\$19,229,461.04	\$19,394,629.84	\$19,235,494.02	\$18,758,615.71	\$17,359,255.14	\$15,027,666.34	\$18,138,981.58
TRANSMISSION SERVICE	\$1,399,931.29	\$1,443,092.89	\$1,671,717.56	\$1,763,418.20	\$1,689,260.17	\$1,499,988.35	\$1,400,122.29
UPLIFT	\$754,591.79	\$751,663.84	\$791,185.88	\$759,189.57	\$573,804.58	\$793,005.31	\$695,347.79
RESIDUALS	(\$639,301.91)	(\$769,483.49)	(\$725,481.62)	(\$823,288.69)	(\$871,952.17)	(\$872,130.76)	(\$844,536.92)
ANCILLARY SERVICES	\$1,057,007.39	\$1,020,761.13	\$1,019,773.83	\$1,007,100.43	\$1,026,381.20	\$965,537.50	\$679,718.74
TCC	\$554,367.18	\$713,712.48	\$1,254,478.32	\$1,366,094.12	\$1,381,629.27	\$1,104,689.24	\$719,155.94
	13	14	15	16	17	18	19
ENERGY	\$20,950,138.91	\$18,071,938.01	\$14,945,685.50	\$13,839,767.73	\$13,726,219.21	\$16,423,630.13	\$16,498,398.90
TRANSMISSION SERVICE	\$1,636,572.05	\$1,469,049.09	\$1,482,345.43	\$1,522,723.02	\$1,387,184.44	\$1,641,657.23	\$1,609,376.43
UPLIFT	\$713,634.07	\$769,646.50	\$843,592.52	\$693,560.28	\$746,375.59	\$548,515.15	\$513,944.11
RESIDUALS	(\$744,131.44)	(\$865,727.43)	(\$294,751.76)	(\$604,967.16)	(\$621,541.25)	(\$783,792.04)	(\$503,334.09)
ANCILLARY SERVICES	\$1,063,229.89	\$1,122,837.89	\$1,029,552.27	\$1,265,651.60	\$920,898.73	\$1,103,259.42	\$860,775.08
TCC	\$792,537.22	\$556,023.19	\$1,030,885.19	\$1,022,327.99	\$1,079,778.18	\$1,326,850.75	\$1,302,001.43
	20	21	22	23	24	25	26
ENERGY	\$17,176,746.04	\$16,674,817.24	\$15,897,501.09	\$15,099,382.78	\$14,965,913.66	\$15,307,733.82	\$16,074,137.85
TRANSMISSION SERVICE	\$1,840,540.46	\$2,263,065.92	\$2,399,824.18	\$1,738,993.78	\$1,652,410.21	\$1,568,831.25	\$1,636,381.61
UPLIFT	\$524,303.01	\$568,904.26	\$470,288.71	\$759,817.31	\$1,109,590.73	\$562,885.89	\$494,267.98
RESIDUALS	(\$691,985.59)	(\$341,560.56)	\$384,193.46	(\$213,189.84)	\$896,916.29	(\$587,360.82)	\$51,769.12
ANCILLARY SERVICES	\$1,161,522.85	\$1,052,372.01	\$1,139,133.47	\$1,045,165.12	\$1,036,957.48	\$984,723.21	\$822,154.17
TCC	\$1,744,644.03	\$2,674,899.97	\$2,874,183.07	\$1,522,572.21	\$1,378,491.43	\$1,256,810.64	\$1,246,698.75
	27	28					
ENERGY	\$22,154,919.76	\$20,308,330.86					
TRANSMISSION SERVICE	\$2,027,443.55	\$2,171,983.88					
UPLIFT	\$425,441.92	\$522,066.75					
RESIDUALS	(\$846,160.11)	(\$705,789.61)					
ANCILLARY SERVICES	\$1,015,897.12	\$1,022,834.02					
TCC	\$1,585,994.92	\$2,033,484.54					



SETTLEMENTS REPORT
February 2006 Closeout Settlement
October 5, 2007

CLOSEOUT SETTLEMENT MARKET COSTS DELTA ANALYSIS

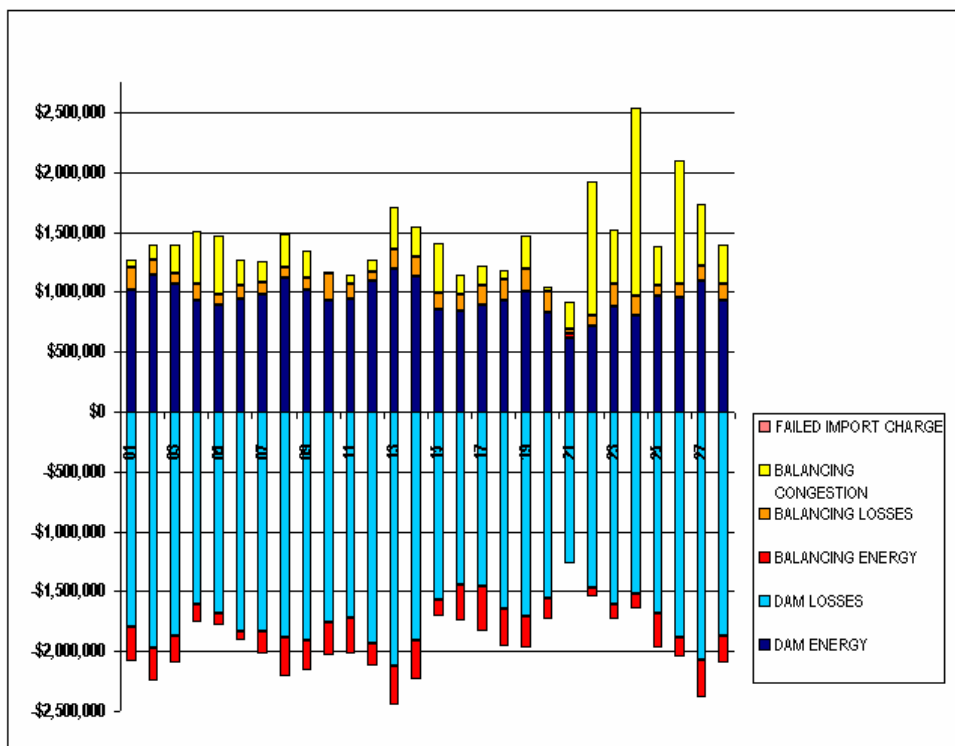
	MONDAY	TUESDAY	WEDNESDAY	THURSDAY	FRIDAY	SATURDAY	SUNDAY
			1	2	3	4	5
ENERGY			\$29.52	(\$124.72)	(\$35.27)	(\$1.47)	\$6.14
TRANSMISSION SERVICE			(\$16,214.70)	\$1,656.18	\$2,125.18	\$237.56	(\$0.12)
UPLIFT			\$114,820.01	\$2,521.57	(\$57,543.16)	(\$54,280.44)	(\$725.02)
RESIDUALS			(\$29.38)	(\$421.63)	\$55.32	(\$140.07)	(\$5.65)
ANCILLARY SERVICES			\$0.68	(\$12.67)	\$0.01	(\$201.00)	\$0.14
TCC			\$0.00	\$0.00	\$0.00	\$0.00	\$0.00
	6	7	8	9	10	11	12
ENERGY	(\$44.40)	\$26.92	(\$81.67)	(\$121.78)	\$16.38	(\$8.31)	(\$12.00)
TRANSMISSION SERVICE	\$174.86	\$938.01	\$5,037.66	\$5,238.99	\$5,572.95	\$3,426.40	\$1,860.27
UPLIFT	\$13,851.19	\$3,322.54	(\$7,589.86)	\$1,530.09	(\$6,300.62)	(\$5,062.36)	(\$4,677.80)
RESIDUALS	\$44.42	(\$26.87)	\$82.24	\$121.07	(\$17.21)	\$8.43	\$11.21
ANCILLARY SERVICES	(\$1.13)	(\$0.17)	(\$0.28)	\$0.10	(\$0.59)	\$0.38	(\$0.16)
TCC	\$0.00	\$0.00	\$0.00	\$0.00	\$0.00	\$0.00	\$0.00
	13	14	15	16	17	18	19
ENERGY	(\$64.83)	(\$53.28)	(\$31.33)	(\$85.28)	(\$27.66)	\$59.09	(\$1.57)
TRANSMISSION SERVICE	\$3,222.41	(\$0.06)	\$3,156.11	\$389.48	\$5,448.32	\$1,635.05	\$3,138.12
UPLIFT	\$614.57	\$3,420.92	(\$18,964.35)	(\$12,794.13)	(\$23,736.28)	\$3,852.98	\$16,852.28
RESIDUALS	\$64.71	\$52.72	\$32.39	\$61.52	(\$4.24)	(\$280.39)	(\$3,909.95)
ANCILLARY SERVICES	(\$0.55)	\$0.28	(\$54.30)	\$5.36	(\$104.26)	(\$880.96)	(\$470.65)
TCC	\$0.00	\$0.00	\$0.00	\$0.00	\$0.00	\$0.00	\$0.00
	20	21	22	23	24	25	26
ENERGY	(\$24.66)	(\$87.11)	\$30.11	(\$14.28)	\$3.04	(\$527.82)	(\$8.03)
TRANSMISSION SERVICE	(\$707.58)	(\$2,016.74)	(\$1,823.24)	\$2,838.09	\$2,265.68	\$3,603.94	\$2,594.24
UPLIFT	(\$1,688.32)	\$8,733.92	(\$2,434.50)	(\$15,576.08)	(\$2,551.08)	\$155.35	\$15,724.55
RESIDUALS	(\$521.90)	\$424.47	(\$31.24)	\$839.80	(\$888.44)	\$1,897.64	\$7.61
ANCILLARY SERVICES	(\$895.54)	\$24.90	\$0.18	\$136.83	(\$955.50)	\$0.42	\$0.71
TCC	\$0.00	\$0.00	\$0.00	\$0.00	\$0.00	\$0.00	\$0.00
	27	28					
ENERGY	(\$59.94)	\$102.01					
TRANSMISSION SERVICE	\$3,617.25	(\$1,054.75)					
UPLIFT	\$8,115.30	\$2,510.83					
RESIDUALS	\$1,505.42	\$1,024.13					
ANCILLARY SERVICES	\$71.36	(\$628.48)					
TCC	\$0.00	\$0.00					



SETTLEMENTS REPORT
February 2006 Closeout Settlement
October 5, 2007

12-MONTH SETTLEMENT ADJUSTMENT MARKET RESIDUALS ANALYSIS

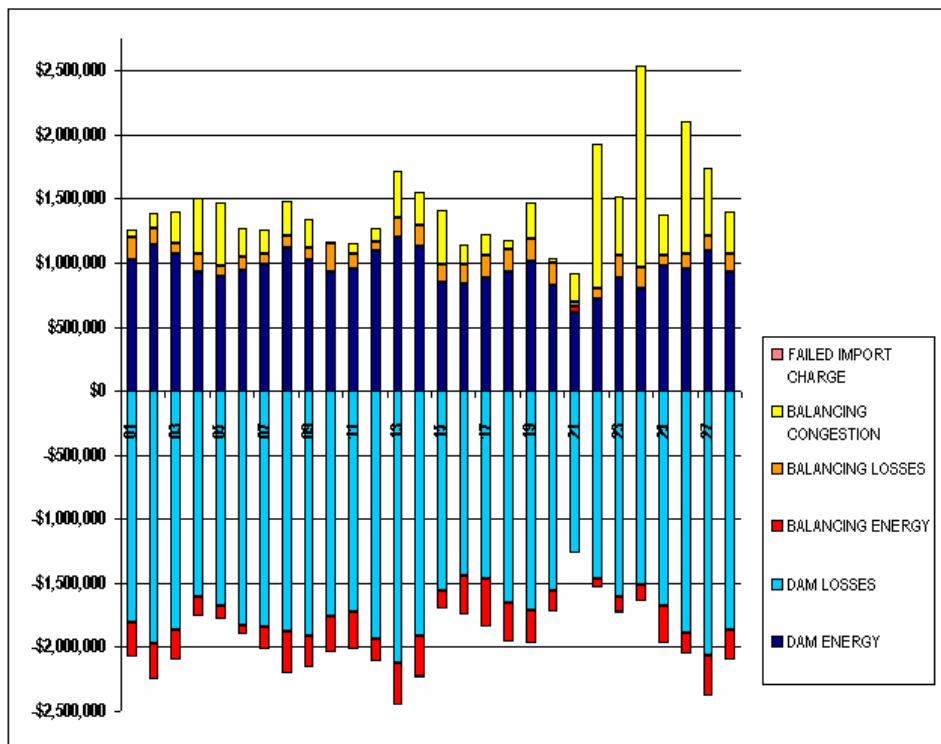
	MONDAY	TUESDAY	WEDNESDAY	THURSDAY	FRIDAY	SATURDAY	SUNDAY
			1	2	3	4	5
DAM ENERGY			\$1,019,242.75	\$1,146,516.56	\$1,066,292.64	\$927,892.82	\$896,664.47
DAM LOSSES			(\$1,801,648.21)	(\$1,974,386.34)	(\$1,869,833.23)	(\$1,605,997.40)	(\$1,679,721.15)
BALANCING ENERGY			(\$280,859.08)	(\$277,480.75)	(\$232,294.13)	(\$149,747.85)	(\$101,648.00)
BALANCING LOSSES			\$182,089.87	\$122,827.40	\$82,343.53	\$137,986.15	\$80,698.99
BALANCING CONGESTION			\$62,013.54	\$118,058.70	\$245,459.26	\$439,790.67	\$496,855.84
FAILED IMPORT CHARGE			(\$47.12)	(\$891.90)	\$0.00	(\$34.39)	(\$5,648.61)
	6	7	8	9	10	11	12
DAM ENERGY	\$944,424.48	\$984,779.27	\$1,121,455.38	\$1,018,338.40	\$827,759.56	\$947,375.24	\$1,093,256.93
DAM LOSSES	(\$1,831,424.27)	(\$1,840,097.75)	(\$1,879,295.87)	(\$1,908,100.42)	(\$1,764,477.55)	(\$1,725,648.55)	(\$1,934,936.18)
BALANCING ENERGY	(\$72,186.77)	(\$184,184.45)	(\$328,277.80)	(\$255,428.77)	(\$272,394.68)	(\$293,711.26)	(\$182,446.78)
BALANCING LOSSES	\$104,181.26	\$90,888.57	\$87,282.41	\$103,496.41	\$227,310.22	\$121,972.96	\$68,214.61
BALANCING CONGESTION	\$215,658.97	\$179,157.74	\$273,272.02	\$218,284.62	\$10,125.30	\$77,872.42	\$111,908.57
FAILED IMPORT CHARGE	\$0.00	\$0.00	\$0.00	\$0.00	(\$257.81)	\$0.00	(\$545.30)
	13	14	15	16	17	18	19
DAM ENERGY	\$1,197,408.96	\$1,134,076.97	\$848,251.14	\$840,842.67	\$887,928.36	\$929,838.06	\$1,008,250.36
DAM LOSSES	(\$2,119,440.18)	(\$1,907,639.10)	(\$1,564,972.83)	(\$1,446,341.52)	(\$1,460,648.05)	(\$1,850,453.92)	(\$1,714,323.87)
BALANCING ENERGY	(\$335,902.90)	(\$326,853.10)	(\$141,555.15)	(\$300,851.77)	(\$378,748.27)	(\$314,194.91)	(\$256,983.56)
BALANCING LOSSES	\$155,270.22	\$162,340.15	\$138,921.53	\$142,284.76	\$170,337.80	\$173,345.26	\$180,215.46
BALANCING CONGESTION	\$358,467.75	\$253,653.29	\$424,756.62	\$160,842.53	\$160,456.53	\$77,953.86	\$283,417.47
FAILED IMPORT CHARGE	\$0.00	(\$1,358.36)	(\$185.46)	(\$1,805.35)	(\$863.38)	\$0.00	\$0.00
	20	21	22	23	24	25	26
DAM ENERGY	\$826,893.26	\$616,565.82	\$712,807.54	\$884,199.52	\$805,659.14	\$971,806.67	\$946,577.66
DAM LOSSES	(\$1,556,066.70)	(\$1,263,863.51)	(\$1,465,289.16)	(\$1,603,919.93)	(\$1,518,938.24)	(\$1,680,289.12)	(\$1,889,925.07)
BALANCING ENERGY	(\$174,044.14)	\$38,771.41	(\$75,205.15)	(\$127,197.00)	(\$121,044.95)	(\$288,713.97)	(\$160,323.29)
BALANCING LOSSES	\$178,339.30	\$37,936.87	\$89,061.92	\$180,224.76	\$155,149.10	\$87,535.87	\$124,005.83
BALANCING CONGESTION	\$33,414.59	\$228,605.31	\$1,123,955.96	\$456,110.45	\$1,580,305.77	\$320,402.09	\$1,030,350.39
FAILED IMPORT CHARGE	\$0.00	(\$0.93)	(\$1,106.41)	(\$3,447.44)	(\$3,326.09)	\$0.00	(\$824.01)
	27	28					
DAM ENERGY	\$1,095,293.15	\$933,853.72					
DAM LOSSES	(\$2,068,004.38)	(\$1,865,875.91)					
BALANCING ENERGY	(\$313,109.23)	(\$236,461.67)					
BALANCING LOSSES	\$117,744.96	\$132,314.42					
BALANCING CONGESTION	\$520,409.97	\$330,133.91					
FAILED IMPORT CHARGE	\$0.00	(\$778.21)					



SETTLEMENTS REPORT
February 2006 Closeout Settlement
October 5, 2007

CLOSEOUT SETTLEMENT MARKET RESIDUALS ANALYSIS

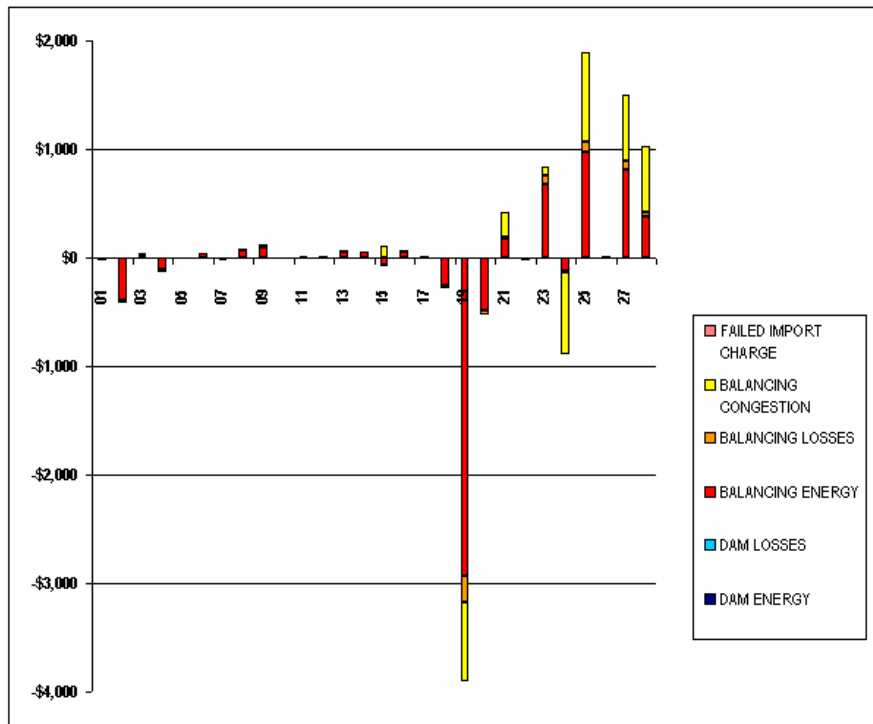
	MONDAY	TUESDAY	WEDNESDAY	THURSDAY	FRIDAY	SATURDAY	SUNDAY
			1	2	3	4	5
DAM ENERGY			\$1,019,242.69	\$1,146,516.46	\$1,066,292.46	\$927,892.68	\$896,664.41
DAM LOSSES			(\$1,801,648.18)	(\$1,974,386.26)	(\$1,869,833.25)	(\$1,605,997.40)	(\$1,679,721.15)
BALANCING ENERGY			(\$280,883.14)	(\$277,866.86)	(\$232,261.08)	(\$149,858.14)	(\$101,654.60)
BALANCING LOSSES			\$182,085.74	\$122,792.71	\$82,344.31	\$137,976.62	\$80,700.51
BALANCING CONGESTION			\$62,012.38	\$118,057.94	\$245,460.95	\$439,770.56	\$496,855.28
FAILED IMPORT CHARGE			(\$47.12)	(\$891.95)	\$0.00	(\$34.39)	(\$5,648.56)
	6	7	8	9	10	11	12
DAM ENERGY	\$944,424.40	\$984,779.05	\$1,121,455.29	\$1,018,338.31	\$927,759.41	\$947,375.13	\$1,093,256.75
DAM LOSSES	(\$1,831,424.24)	(\$1,840,097.75)	(\$1,879,295.79)	(\$1,908,100.39)	(\$1,764,477.55)	(\$1,725,648.58)	(\$1,934,936.14)
BALANCING ENERGY	(\$72,145.33)	(\$184,204.51)	(\$328,203.92)	(\$255,340.09)	(\$272,411.06)	(\$293,705.87)	(\$182,438.58)
BALANCING LOSSES	\$104,186.89	\$90,889.62	\$87,290.29	\$103,507.38	\$227,309.46	\$121,974.59	\$68,217.16
BALANCING CONGESTION	\$215,658.37	\$179,150.10	\$273,272.51	\$218,306.10	\$10,125.41	\$77,873.97	\$111,909.17
FAILED IMPORT CHARGE	\$0.00	\$0.00	\$0.00	\$0.00	(\$257.84)	\$0.00	(\$545.28)
	13	14	15	16	17	18	19
DAM ENERGY	\$1,197,408.74	\$1,134,076.67	\$848,251.05	\$840,842.51	\$887,928.13	\$929,837.88	\$1,008,250.34
DAM LOSSES	(\$2,119,440.11)	(\$1,907,638.96)	(\$1,564,972.74)	(\$1,446,341.57)	(\$1,460,647.95)	(\$1,650,453.81)	(\$1,714,323.87)
BALANCING ENERGY	(\$335,848.18)	(\$326,804.54)	(\$141,625.00)	(\$300,802.28)	(\$378,760.55)	(\$314,458.23)	(\$259,912.57)
BALANCING LOSSES	\$155,277.34	\$162,342.82	\$138,916.66	\$142,292.98	\$170,334.48	\$173,330.85	\$179,965.19
BALANCING CONGESTION	\$358,470.77	\$253,855.05	\$424,863.73	\$160,846.54	\$160,468.01	\$77,951.27	\$282,686.82
FAILED IMPORT CHARGE	\$0.00	(\$1,358.47)	(\$185.46)	(\$1,805.34)	(\$863.37)	\$0.00	\$0.00
	20	21	22	23	24	25	26
DAM ENERGY	\$826,893.08	\$616,565.68	\$712,807.48	\$884,199.37	\$805,658.98	\$971,806.56	\$846,577.60
DAM LOSSES	(\$1,556,066.58)	(\$1,263,863.48)	(\$1,465,289.21)	(\$1,603,919.82)	(\$1,518,938.21)	(\$1,680,289.18)	(\$1,889,925.04)
BALANCING ENERGY	(\$174,531.00)	\$38,944.94	(\$75,229.93)	(\$126,519.27)	(\$121,163.65)	(\$287,743.17)	(\$160,322.67)
BALANCING LOSSES	\$178,304.23	\$37,956.52	\$89,058.90	\$180,300.77	\$155,137.94	\$87,639.37	\$124,007.04
BALANCING CONGESTION	\$33,414.68	\$228,836.71	\$1,123,952.61	\$456,196.56	\$1,579,547.44	\$321,225.60	\$1,030,356.16
FAILED IMPORT CHARGE	\$0.00	(\$0.93)	(\$1,106.40)	(\$3,447.45)	(\$3,326.21)	\$0.00	(\$923.97)
	27	28					
DAM ENERGY	\$1,095,293.05	\$933,853.53					
DAM LOSSES	(\$2,068,004.45)	(\$1,865,875.87)					
BALANCING ENERGY	(\$312,304.56)	(\$236,082.52)					
BALANCING LOSSES	\$117,830.08	\$132,355.22					
BALANCING CONGESTION	\$521,025.77	\$330,738.32					
FAILED IMPORT CHARGE	\$0.00	(\$778.29)					



SETTLEMENTS REPORT
February 2006 Closeout Settlement
October 5, 2007

CLOSEOUT SETTLEMENT MARKET RESIDUALS DELTA ANALYSIS

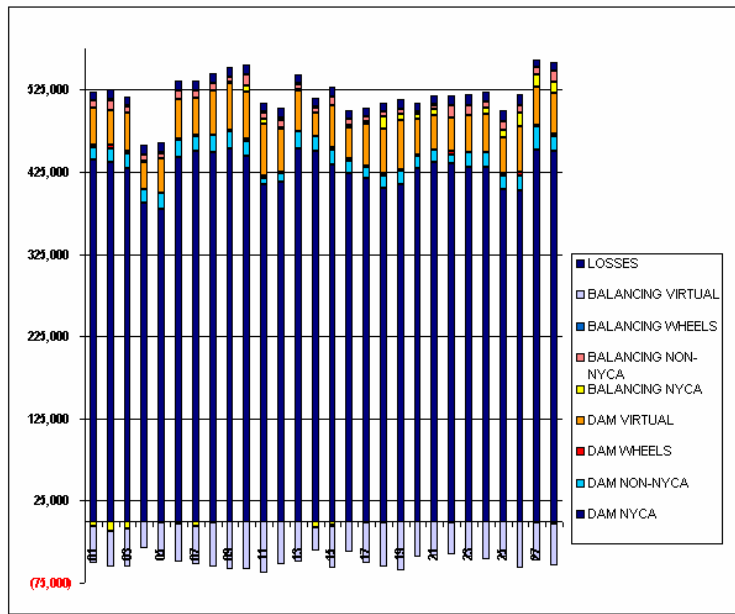
	MONDAY	TUESDAY	WEDNESDAY	THURSDAY	FRIDAY	SATURDAY	SUNDAY
			1	2	3	4	5
DAW ENERGY			(\$0.06)	(\$0.10)	(\$0.18)	(\$0.14)	(\$0.06)
DAW LOSSES			\$0.03	\$0.08	(\$0.02)	\$0.00	\$0.00
BALANCING ENERGY			(\$24.06)	(\$386.11)	\$33.05	(\$110.29)	(\$6.60)
BALANCING LOSSES			(\$4.13)	(\$34.69)	\$0.78	(\$9.53)	\$1.52
BALANCING CONGESTION			(\$1.16)	(\$0.76)	\$1.69	(\$20.11)	(\$0.56)
FAILED IMPORT CHARGE			\$0.00	(\$0.05)	\$0.00	\$0.00	\$0.05
	6	7	8	9	10	11	12
DAW ENERGY	(\$0.08)	(\$0.22)	(\$0.09)	(\$0.09)	(\$0.15)	(\$0.11)	(\$0.18)
DAW LOSSES	\$0.03	\$0.00	\$0.08	\$0.03	\$0.00	(\$0.03)	\$0.02
BALANCING ENERGY	\$41.44	(\$20.06)	\$73.88	\$88.66	(\$18.38)	\$5.39	\$6.20
BALANCING LOSSES	\$5.63	\$1.05	\$7.88	\$10.97	(\$0.76)	\$1.63	\$2.55
BALANCING CONGESTION	(\$2.60)	(\$7.64)	\$0.49	\$21.48	\$0.11	\$1.55	\$0.60
FAILED IMPORT CHARGE	\$0.00	\$0.00	\$0.00	\$0.00	(\$0.03)	\$0.00	\$0.02
	13	14	15	16	17	18	19
DAW ENERGY	(\$0.22)	(\$0.30)	(\$0.09)	(\$0.16)	(\$0.23)	(\$0.18)	(\$0.02)
DAW LOSSES	\$0.07	\$0.14	\$0.09	(\$0.05)	\$0.10	\$0.11	\$0.00
BALANCING ENERGY	\$54.72	\$48.56	(\$69.85)	\$49.49	(\$12.28)	(\$263.32)	(\$2,329.01)
BALANCING LOSSES	\$7.12	\$2.67	(\$4.87)	\$8.22	(\$3.32)	(\$14.41)	(\$250.27)
BALANCING CONGESTION	\$3.02	\$1.76	\$107.11	\$4.01	\$11.48	(\$2.59)	(\$730.65)
FAILED IMPORT CHARGE	\$0.00	(\$0.11)	\$0.00	\$0.01	\$0.01	\$0.00	\$0.00
	20	21	22	23	24	25	26
DAW ENERGY	(\$0.18)	(\$0.14)	(\$0.05)	(\$0.15)	(\$0.16)	(\$0.11)	(\$0.06)
DAW LOSSES	\$0.12	\$0.03	(\$0.05)	\$0.11	\$0.03	(\$0.06)	\$0.03
BALANCING ENERGY	(\$486.86)	\$173.53	(\$24.78)	\$677.73	(\$118.70)	\$970.80	\$0.62
BALANCING LOSSES	(\$35.07)	\$19.65	(\$3.02)	\$76.01	(\$11.16)	\$103.50	\$1.21
BALANCING CONGESTION	\$0.09	\$231.40	(\$3.35)	\$86.11	(\$758.33)	\$823.51	\$5.77
FAILED IMPORT CHARGE	\$0.00	\$0.00	\$0.01	(\$0.01)	(\$0.12)	\$0.00	\$0.04
	27	28					
DAW ENERGY	(\$0.10)	(\$0.19)					
DAW LOSSES	(\$0.07)	\$0.04					
BALANCING ENERGY	\$804.67	\$379.15					
BALANCING LOSSES	\$85.12	\$40.80					
BALANCING CONGESTION	\$615.80	\$604.41					
FAILED IMPORT CHARGE	\$0.00	(\$0.08)					



SETTLEMENTS REPORT
February 2006 Closeout Settlement
October 5, 2007

12-MONTH SETTLEMENT ADJUSTMENT MARKET WITHDRAWALS ANALYSIS

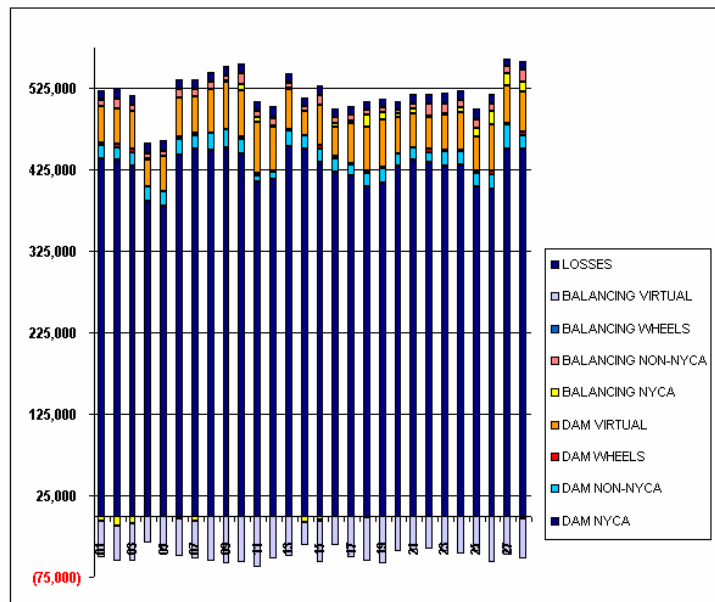
	MONDAY	TUESDAY	WEDNESDAY	THURSDAY	FRIDAY	SATURDAY	SUNDAY
			1	2	3	4	5
DAM NYCA			439,551	437,641	429,941	386,835	380,196
DAM NON-NYCA			15,663	15,432	16,817	17,644	18,667
DAM WHEELS			2,968	4,209	3,887	0	0
DAM VIRTUAL			44,816	42,420	46,622	33,071	42,559
BALANCING NYCA			(5,540)	(12,629)	(9,542)	1,009	(1,003)
BALANCING NON-NYCA			8,407	12,302	7,024	6,623	6,504
BALANCING WHEELS			167	846	981	483	778
BALANCING VIRTUAL			(44,816)	(42,420)	(46,622)	(33,071)	(42,559)
UFE/LOSSES			11,395	12,250	11,825	12,569	12,473
	6	7	8	9	10	11	12
DAM NYCA	443,074	450,323	449,353	452,733	444,584	410,161	413,498
DAM NON-NYCA	20,435	17,485	20,715	21,624	17,950	7,915	9,776
DAM WHEELS	2,100	2,050	0	1,200	2,686	2,928	1,169
DAM VIRTUAL	47,453	45,256	54,508	57,831	57,798	63,003	53,091
BALANCING NYCA	(2,542)	(6,637)	(973)	1,259	7,307	5,487	1,234
BALANCING NON-NYCA	10,477	6,981	7,970	6,408	12,563	7,576	9,620
BALANCING WHEELS	462	139	804	(224)	1,070	755	2,019
BALANCING VIRTUAL	(47,453)	(45,256)	(54,508)	(57,831)	(57,798)	(63,003)	(53,091)
UFE/LOSSES	12,024	11,371	11,638	11,678	11,575	11,674	12,378
	13	14	15	16	17	18	19
DAM NYCA	453,485	451,133	433,853	422,881	417,679	405,294	409,837
DAM NON-NYCA	20,612	16,715	17,324	15,441	13,800	15,753	16,966
DAM WHEELS	779	0	3,619	3,288	1,200	2,552	1,734
DAM VIRTUAL	49,535	29,488	50,550	36,894	50,058	54,497	58,718
BALANCING NYCA	1,016	(7,153)	(4,991)	3,334	2,971	14,274	8,315
BALANCING NON-NYCA	6,492	5,734	11,142	8,272	7,410	6,730	6,058
BALANCING WHEELS	623	785	(1,161)	0	(750)	(1,409)	(568)
BALANCING VIRTUAL	(49,535)	(29,488)	(50,550)	(36,894)	(50,058)	(54,497)	(58,718)
UFE/LOSSES	10,836	10,604	11,605	10,366	10,491	10,211	11,171
	20	21	22	23	24	25	26
DAM NYCA	429,629	436,989	434,688	430,216	431,084	404,384	401,988
DAM NON-NYCA	15,052	15,009	11,473	18,015	17,520	16,614	18,242
DAM WHEELS	900	0	4,129	1,036	752	2,416	4,128
DAM VIRTUAL	43,770	42,584	39,959	44,187	46,085	42,909	56,308
BALANCING NYCA	5,350	6,242	423	1,051	6,875	9,556	16,418
BALANCING NON-NYCA	4,397	5,763	15,916	11,104	8,248	10,759	9,502
BALANCING WHEELS	(370)	250	(952)	250	600	294	(216)
BALANCING VIRTUAL	(43,770)	(42,584)	(39,959)	(44,187)	(46,085)	(42,909)	(56,308)
UFE/LOSSES	10,574	11,044	11,836	13,226	11,124	12,775	12,134
	27	28					
DAM NYCA	451,685	451,133					
DAM NON-NYCA	28,610	16,660					
DAM WHEELS	1,442	3,806					
DAM VIRTUAL	47,358	50,079					
BALANCING NYCA	15,111	12,140					
BALANCING NON-NYCA	7,695	13,967					
BALANCING WHEELS	(722)	(3,165)					
BALANCING VIRTUAL	(47,358)	(50,079)					
UFE/LOSSES	10,015	10,149					



SETTLEMENTS REPORT
February 2006 Closeout Settlement
October 5, 2007

CLOSEOUT SETTLEMENT MARKET WITHDRAWALS ANALYSIS

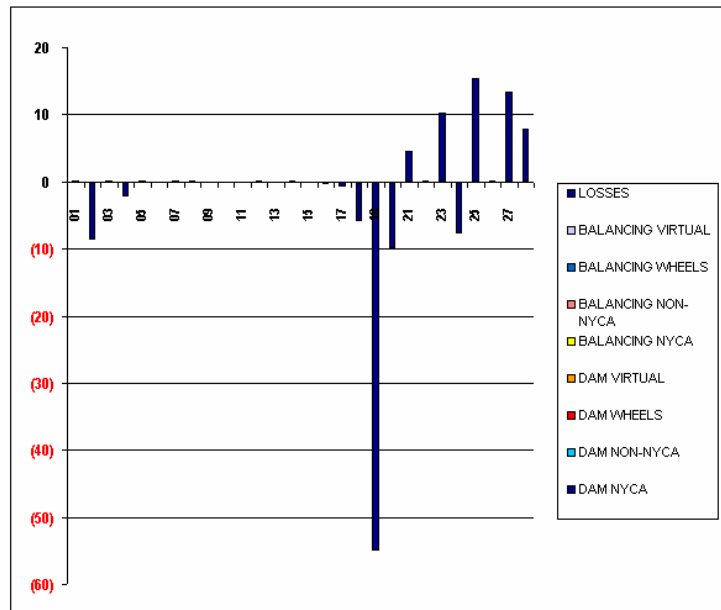
	MONDAY	TUESDAY	WEDNESDAY	THURSDAY	FRIDAY	SATURDAY	SUNDAY
			1	2	3	4	5
DAM NYCA			439,551	437,641	429,941	386,835	380,196
DAM NON-NYCA			15,663	15,432	16,817	17,644	18,667
DAM WHEELS			2,968	4,209	3,887	0	0
DAM VIRTUAL			44,816	42,420	46,622	33,071	42,559
BALANCING NYCA			(5,540)	(12,629)	(9,542)	1,009	(1,003)
BALANCING NON-NYCA			8,407	12,302	7,024	6,623	6,504
BALANCING WHEELS			167	846	981	483	778
BALANCING VIRTUAL			(44,816)	(42,420)	(46,622)	(33,071)	(42,559)
UFE/LOSSES			11,395	12,242	11,825	12,567	12,473
	6	7	8	9	10	11	12
DAM NYCA	443,074	450,323	448,353	452,733	444,584	410,161	413,498
DAM NON-NYCA	20,435	17,465	20,715	21,624	17,950	7,915	9,776
DAM WHEELS	2,100	2,050	0	1,200	2,686	2,928	1,169
DAM VIRTUAL	47,453	45,256	54,508	57,851	57,798	63,003	53,091
BALANCING NYCA	(2,542)	(6,637)	(973)	1,258	7,307	5,487	1,234
BALANCING NON-NYCA	10,477	8,981	7,970	6,408	12,563	7,576	9,620
BALANCING WHEELS	462	139	804	(224)	1,070	755	2,019
BALANCING VIRTUAL	(47,453)	(45,256)	(54,508)	(57,851)	(57,798)	(63,003)	(53,091)
UFE/LOSSES	12,024	11,371	11,838	11,678	11,575	11,674	12,378
	13	14	15	16	17	18	19
DAM NYCA	453,485	451,133	433,853	422,881	417,679	405,294	409,837
DAM NON-NYCA	20,612	16,715	17,324	15,441	13,800	15,753	16,966
DAM WHEELS	779	0	3,619	3,288	1,200	2,552	1,734
DAM VIRTUAL	49,535	29,468	50,550	36,894	50,058	54,487	58,718
BALANCING NYCA	1,016	(7,153)	(4,992)	3,334	2,970	14,274	8,315
BALANCING NON-NYCA	6,492	5,734	11,142	8,272	7,410	6,730	6,058
BALANCING WHEELS	623	785	(1,161)	0	(750)	(1,410)	(568)
BALANCING VIRTUAL	(49,535)	(29,468)	(50,550)	(36,894)	(50,058)	(54,487)	(58,718)
UFE/LOSSES	10,836	10,604	11,805	10,365	10,490	10,205	11,116
	20	21	22	23	24	25	26
DAM NYCA	429,629	436,989	434,688	430,216	431,084	404,384	401,988
DAM NON-NYCA	15,052	15,009	11,473	18,015	17,520	16,614	18,242
DAM WHEELS	900	0	4,129	1,036	752	2,416	4,128
DAM VIRTUAL	43,770	42,584	39,959	44,187	46,085	42,909	56,308
BALANCING NYCA	5,350	6,242	423	1,051	6,875	9,556	16,418
BALANCING NON-NYCA	4,397	5,763	15,916	11,104	8,248	10,759	9,502
BALANCING WHEELS	(370)	250	(952)	250	600	294	(216)
BALANCING VIRTUAL	(43,770)	(42,584)	(39,959)	(44,187)	(46,085)	(42,909)	(56,308)
UFE/LOSSES	10,564	11,048	11,836	13,237	11,116	12,790	12,134
	27	28					
DAM NYCA	451,685	451,133					
DAM NON-NYCA	28,610	16,660					
DAM WHEELS	1,442	3,806					
DAM VIRTUAL	47,358	50,079					
BALANCING NYCA	15,111	12,140					
BALANCING NON-NYCA	7,695	13,967					
BALANCING WHEELS	(722)	(3,165)					
BALANCING VIRTUAL	(47,358)	(50,079)					
UFE/LOSSES	10,029	10,157					



SETTLEMENTS REPORT
February 2006 Closeout Settlement
October 5, 2007

CLOSEOUT SETTLEMENT MARKET WITHDRAWALS DELTA ANALYSIS

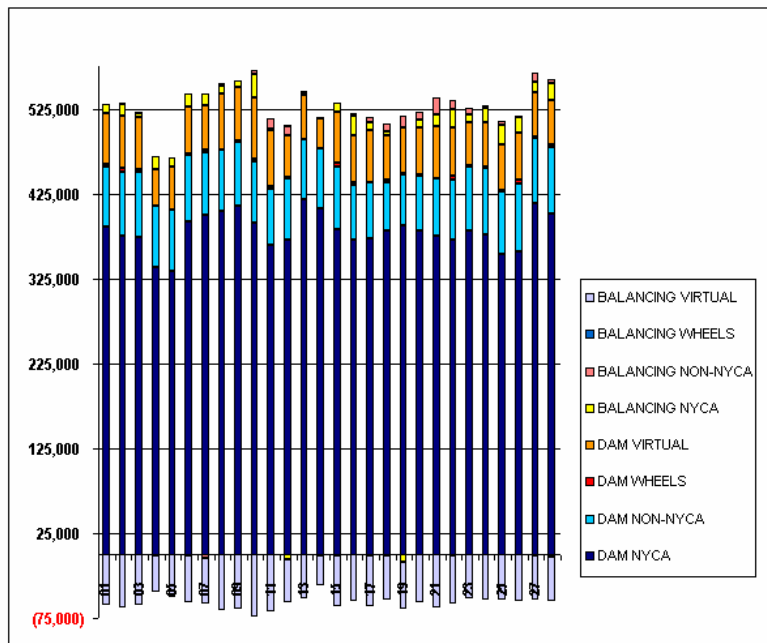
	MONDAY	TUESDAY	WEDNESDAY	THURSDAY	FRIDAY	SATURDAY	SUNDAY
			1	2	3	4	5
DAM NYCA			0	0	0	0	0
DAM NON-NYCA			0	0	0	0	0
DAM WHEELS			0	0	0	0	0
DAM VIRTUAL			0	0	0	0	0
BALANCING NYCA			(0)	(0)	(0)	(0)	(0)
BALANCING NON-NYCA			0	0	0	0	0
BALANCING WHEELS			0	0	0	0	0
BALANCING VIRTUAL			0	(0)	0	(0)	0
UFE/LOSSES			0	(9)	0	(2)	0
	6	7	8	9	10	11	12
DAM NYCA	0	0	0	0	0	0	0
DAM NON-NYCA	0	0	0	0	0	0	0
DAM WHEELS	0	0	0	0	0	0	0
DAM VIRTUAL	0	0	0	0	0	0	0
BALANCING NYCA	(0)	(0)	(0)	(0)	(0)	(0)	(0)
BALANCING NON-NYCA	0	0	0	(0)	0	0	0
BALANCING WHEELS	0	0	0	0	0	0	0
BALANCING VIRTUAL	(0)	(0)	(0)	(0)	(0)	0	0
UFE/LOSSES	(0)	0	0	0	(0)	0	0
	13	14	15	16	17	18	19
DAM NYCA	0	0	0	0	0	0	0
DAM NON-NYCA	0	0	0	0	0	0	0
DAM WHEELS	0	0	0	0	0	0	0
DAM VIRTUAL	0	0	0	0	0	0	0
BALANCING NYCA	(0)	(0)	(0)	(0)	(0)	(0)	(0)
BALANCING NON-NYCA	0	0	0	0	0	(0)	0
BALANCING WHEELS	0	0	0	0	0	(0)	(0)
BALANCING VIRTUAL	0	0	0	0	0	0	0
UFE/LOSSES	(0)	0	(0)	(0)	(1)	(6)	(55)
	20	21	22	23	24	25	26
DAM NYCA	0	0	0	0	0	0	0
DAM NON-NYCA	0	0	0	0	0	0	0
DAM WHEELS	0	0	0	0	0	0	0
DAM VIRTUAL	0	0	0	0	0	0	0
BALANCING NYCA	(0)	(0)	(0)	(0)	(0)	(0)	(0)
BALANCING NON-NYCA	0	0	0	0	0	0	0
BALANCING WHEELS	0	0	(0)	0	0	0	0
BALANCING VIRTUAL	0	(0)	0	0	(0)	(0)	(0)
UFE/LOSSES	(10)	4	(0)	10	(8)	15	0
	27	28					
DAM NYCA	0	0					
DAM NON-NYCA	0	0					
DAM WHEELS	0	0					
DAM VIRTUAL	0	0					
BALANCING NYCA	(0)	(0)					
BALANCING NON-NYCA	0	0					
BALANCING WHEELS	0	(0)					
BALANCING VIRTUAL	0	(0)					
UFE/LOSSES	13	8					



SETTLEMENTS REPORT
February 2006 Closeout Settlement
October 5, 2007

12-MONTH SETTLEMENT ADJUSTMENT MARKET SUPPLY ANALYSIS

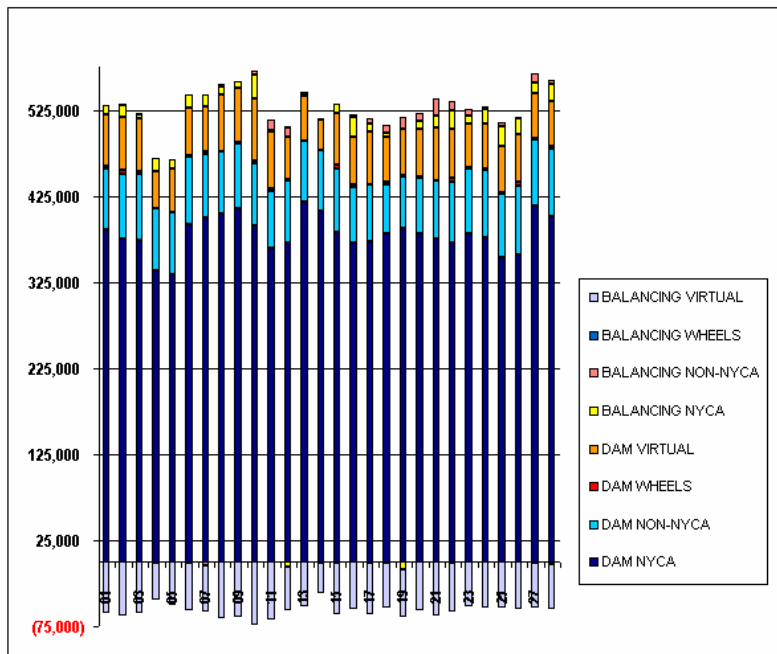
	MONDAY	TUESDAY	WEDNESDAY	THURSDAY	FRIDAY	SATURDAY	SUNDAY
			1	2	3	4	5
DAM NYCA			385,525	375,238	374,106	338,307	333,989
DAM NON-NYCA			71,115	75,589	76,148	71,567	72,559
DAM WHEELS			2,968	4,209	3,887	0	0
DAM VIRTUAL			59,374	62,326	60,196	43,718	50,115
BALANCING NYCA			10,823	13,477	5,402	15,626	10,140
BALANCING NON-NYCA			393	693	463	(820)	149
BALANCING WHEELS			167	846	981	463	778
BALANCING VIRTUAL			(59,374)	(62,326)	(60,196)	(43,718)	(50,115)
	6	7	8	9	10	11	12
DAM NYCA	392,155	399,389	405,127	410,039	390,854	364,783	370,289
DAM NON-NYCA	77,949	74,569	71,385	75,523	72,064	65,204	72,164
DAM WHEELS	2,100	2,050	0	1,200	2,886	2,928	1,169
DAM VIRTUAL	54,884	53,439	65,614	63,162	73,067	67,228	50,187
BALANCING NYCA	15,630	12,519	9,268	8,479	27,041	1,017	(5,946)
BALANCING NON-NYCA	(1,741)	(4,193)	2,370	(226)	4,171	11,809	9,999
BALANCING WHEELS	462	139	804	(224)	1,070	755	2,019
BALANCING VIRTUAL	(54,884)	(53,439)	(65,614)	(63,162)	(73,067)	(67,228)	(50,187)
	13	14	15	16	17	18	19
DAM NYCA	418,354	407,542	383,389	370,699	371,870	382,043	387,500
DAM NON-NYCA	69,895	71,306	73,882	64,212	65,853	56,488	59,598
DAM WHEELS	779	0	3,619	3,288	1,200	2,552	1,734
DAM VIRTUAL	52,466	35,262	60,003	55,674	60,698	52,093	54,698
BALANCING NYCA	1,181	(375)	11,718	22,353	9,537	4,544	(8,311)
BALANCING NON-NYCA	3,141	(1,017)	15	3,075	5,410	9,378	13,560
BALANCING WHEELS	623	785	(1,161)	0	(750)	(1,409)	(568)
BALANCING VIRTUAL	(52,466)	(35,262)	(60,003)	(55,674)	(60,698)	(52,093)	(54,698)
	20	21	22	23	24	25	26
DAM NYCA	381,105	375,665	370,148	380,760	376,049	353,257	356,727
DAM NON-NYCA	64,834	66,566	71,619	76,083	79,570	73,853	80,292
DAM WHEELS	900	0	4,129	1,036	752	2,416	4,128
DAM VIRTUAL	55,658	62,632	56,569	51,236	52,940	53,516	54,812
BALANCING NYCA	9,277	13,416	22,091	9,079	17,155	22,735	18,980
BALANCING NON-NYCA	9,785	19,400	10,759	7,991	2,169	4,243	2,285
BALANCING WHEELS	(370)	250	(952)	250	600	294	(216)
BALANCING VIRTUAL	(55,658)	(62,632)	(56,569)	(51,236)	(52,940)	(53,516)	(54,812)
	27	28					
DAM NYCA	414,413	401,488					
DAM NON-NYCA	75,410	77,980					
DAM WHEELS	1,442	3,806					
DAM VIRTUAL	52,947	52,262					
BALANCING NYCA	12,793	18,777					
BALANCING NON-NYCA	10,800	5,895					
BALANCING WHEELS	(722)	(3,165)					
BALANCING VIRTUAL	(52,947)	(52,262)					



SETTLEMENTS REPORT
February 2006 Closeout Settlement
October 5, 2007

CLOSEOUT SETTLEMENT MARKET SUPPLY ANALYSIS

	MONDAY	TUESDAY	WEDNESDAY	THURSDAY	FRIDAY	SATURDAY	SUNDAY
			1	2	3	4	5
DAM NYCA			385,525	375,238	374,106	338,307	333,989
DAM NON-NYCA			71,115	75,589	76,148	71,567	72,559
DAM WHEELS			2,968	4,209	3,887	0	0
DAM VIRTUAL			59,374	62,326	60,196	43,718	50,115
BALANCING NYCA			10,823	13,468	5,402	15,624	10,140
BALANCING NON-NYCA			393	693	463	(820)	149
BALANCING WHEELS			167	846	981	463	778
BALANCING VIRTUAL			(59,374)	(62,326)	(60,196)	(43,718)	(50,115)
	6	7	8	9	10	11	12
DAM NYCA	392,155	399,389	405,127	410,039	390,854	364,783	370,289
DAM NON-NYCA	77,949	74,569	71,385	75,523	72,064	65,204	72,164
DAM WHEELS	2,100	2,050	0	1,200	2,666	2,928	1,169
DAM VIRTUAL	54,884	53,439	65,614	63,162	73,067	67,228	50,187
BALANCING NYCA	15,630	12,519	9,268	8,479	27,040	1,017	(5,946)
BALANCING NON-NYCA	(1,741)	(4,193)	2,970	(226)	4,171	11,809	9,999
BALANCING WHEELS	462	139	804	(224)	1,070	755	2,019
BALANCING VIRTUAL	(54,884)	(53,439)	(65,614)	(63,162)	(73,067)	(67,228)	(50,187)
	13	14	15	16	17	18	19
DAM NYCA	418,354	407,542	383,389	370,699	371,670	382,043	387,500
DAM NON-NYCA	69,895	71,306	73,882	64,212	65,853	56,488	59,598
DAM WHEELS	779	0	3,619	3,288	1,200	2,552	1,734
DAM VIRTUAL	52,466	35,262	60,003	55,674	60,698	52,093	54,698
BALANCING NYCA	1,180	(375)	11,718	22,352	9,537	4,538	(8,366)
BALANCING NON-NYCA	3,141	(1,017)	15	3,075	5,410	9,378	13,560
BALANCING WHEELS	623	785	(1,161)	0	(750)	(1,410)	(568)
BALANCING VIRTUAL	(52,466)	(35,262)	(60,003)	(55,674)	(60,698)	(52,093)	(54,698)
	20	21	22	23	24	25	26
DAM NYCA	381,105	375,665	370,148	380,760	376,049	353,257	356,727
DAM NON-NYCA	64,834	66,566	71,619	76,083	79,570	73,853	80,292
DAM WHEELS	900	0	4,129	1,036	752	2,416	4,128
DAM VIRTUAL	55,658	62,632	56,569	51,236	52,940	53,516	54,612
BALANCING NYCA	9,267	13,420	22,091	9,089	17,147	22,751	18,980
BALANCING NON-NYCA	9,785	19,401	10,759	7,991	2,169	4,243	2,285
BALANCING WHEELS	(370)	250	(952)	250	600	294	(216)
BALANCING VIRTUAL	(55,658)	(62,632)	(56,569)	(51,236)	(52,940)	(53,516)	(54,612)
	27	28					
DAM NYCA	414,413	401,488					
DAM NON-NYCA	75,410	77,980					
DAM WHEELS	1,442	3,806					
DAM VIRTUAL	52,947	52,262					
BALANCING NYCA	12,806	18,785					
BALANCING NON-NYCA	10,800	5,895					
BALANCING WHEELS	(722)	(3,165)					
BALANCING VIRTUAL	(52,947)	(52,262)					



SETTLEMENTS REPORT
February 2006 Closeout Settlement
October 5, 2007

CLOSEOUT SETTLEMENT MARKET SUPPLY DELTA ANALYSIS

	MONDAY	TUESDAY	WEDNESDAY	THURSDAY	FRIDAY	SATURDAY	SUNDAY
			1	2	3	4	5
DAM NYCA			0	0	0	0	0
DAM NON-NYCA			0	0	0	0	0
DAM WHEELS			0	0	0	0	0
DAM VIRTUAL			0	0	0	0	0
BALANCING NYCA			(0)	(9)	(0)	(2)	(0)
BALANCING NON-NYCA			0	(0)	(0)	(0)	0
BALANCING WHEELS			0	0	0	0	0
BALANCING VIRTUAL			0	0	0	0	0
	6	7	8	9	10	11	12
DAM NYCA	0	0	0	0	0	0	0
DAM NON-NYCA	0	0	0	0	0	0	0
DAM WHEELS	0	0	0	0	0	0	0
DAM VIRTUAL	0	0	0	0	0	0	0
BALANCING NYCA	(0)	(0)	(0)	(0)	(0)	(0)	(0)
BALANCING NON-NYCA	0	0	0	(0)	0	0	(0)
BALANCING WHEELS	0	0	0	0	0	0	0
BALANCING VIRTUAL	(0)	0	0	(0)	0	0	0
	13	14	15	16	17	18	19
DAM NYCA	0	0	0	0	0	0	0
DAM NON-NYCA	0	0	0	0	0	0	0
DAM WHEELS	0	0	0	0	0	0	0
DAM VIRTUAL	0	0	0	0	0	0	0
BALANCING NYCA	(0)	(0)	(0)	(1)	(1)	(6)	(55)
BALANCING NON-NYCA	0	0	(0)	0	0	(0)	(0)
BALANCING WHEELS	0	0	0	0	0	(0)	(0)
BALANCING VIRTUAL	(0)	0	(0)	0	0	0	0
	20	21	22	23	24	25	26
DAM NYCA	0	0	0	0	0	0	0
DAM NON-NYCA	0	0	0	0	0	0	0
DAM WHEELS	0	0	0	0	0	0	0
DAM VIRTUAL	0	0	0	0	0	0	0
BALANCING NYCA	(10)	4	(0)	10	(8)	15	(0)
BALANCING NON-NYCA	0	0	(0)	(0)	0	0	0
BALANCING WHEELS	0	0	(0)	0	0	0	0
BALANCING VIRTUAL	0	0	0	0	(0)	(0)	0
	27	28					
DAM NYCA	0	0					
DAM NON-NYCA	0	0					
DAM WHEELS	0	0					
DAM VIRTUAL	0	0					
BALANCING NYCA	13	8					
BALANCING NON-NYCA	0	0					
BALANCING WHEELS	0	(0)					
BALANCING VIRTUAL	0	0					

