

# ***Operations Performance Metrics Monthly Report***



## ***January 2020 Report***

### **Operations & Reliability Department New York Independent System Operator**

Prepared by NYISO Operations Analysis and Services, based on settlements initial invoice data collected on or before February 10, 2020.

# **Table of Contents**

- ♦ **Highlights**
  - *Operations Performance*
- ♦ **Reliability Performance Metrics**
  - *Alert State Declarations*
  - *Major Emergency State Declarations*
  - *IROL Exceedance Times*
  - *Balancing Area Control Performance*
  - *Reserve Activations*
  - *Disturbance Recovery Times*
  - *Load Forecasting Performance*
  - *Wind Forecasting Performance*
  - *Wind Performance and Curtailments*
  - *BTM Solar Performance*
  - *BTM Solar Forecasting Performance*
  - *Net Load Forecasting Performance*
  - *Lake Erie Circulation and ISO Schedules*
- ♦ **Broader Regional Market Performance Metrics**
  - *PAR Interconnection Congestion Coordination Monthly Value*
  - *PAR Interconnection Congestion Coordination Daily Value*
  - *Regional Generation Congestion Coordination Monthly Value*
  - *Regional Generation Congestion Coordination Daily Value*
  - *Regional RT Scheduling - PJM Monthly Value*
  - *Regional RT Scheduling - PJM Daily Value*
- ♦ **Market Performance Metrics**
  - *Monthly Statewide Uplift Components and Rate*
  - *RTM Congestion Residuals Monthly Trend*
  - *RTM Congestion Residuals Daily Costs*
  - *RTM Congestion Residuals Event Summary*
  - *RTM Congestion Residuals Cost Categories*
  - *DAM Congestion Residuals Monthly Trend*
  - *DAM Congestion Residuals Daily Costs*
  - *DAM Congestion Residuals Cost Categories*
  - *NYCA Unit Uplift Components Monthly Trend*
  - *NYCA Unit Uplift Components Daily Costs*
  - *Local Reliability Costs Monthly Trend & Commitment Hours*
  - *TCC Monthly Clearing Price with DAM Congestion*
  - *ICAP Spot Market Clearing Price*
  - *UCAP Awards*

## January 2020 Operations Performance Highlights

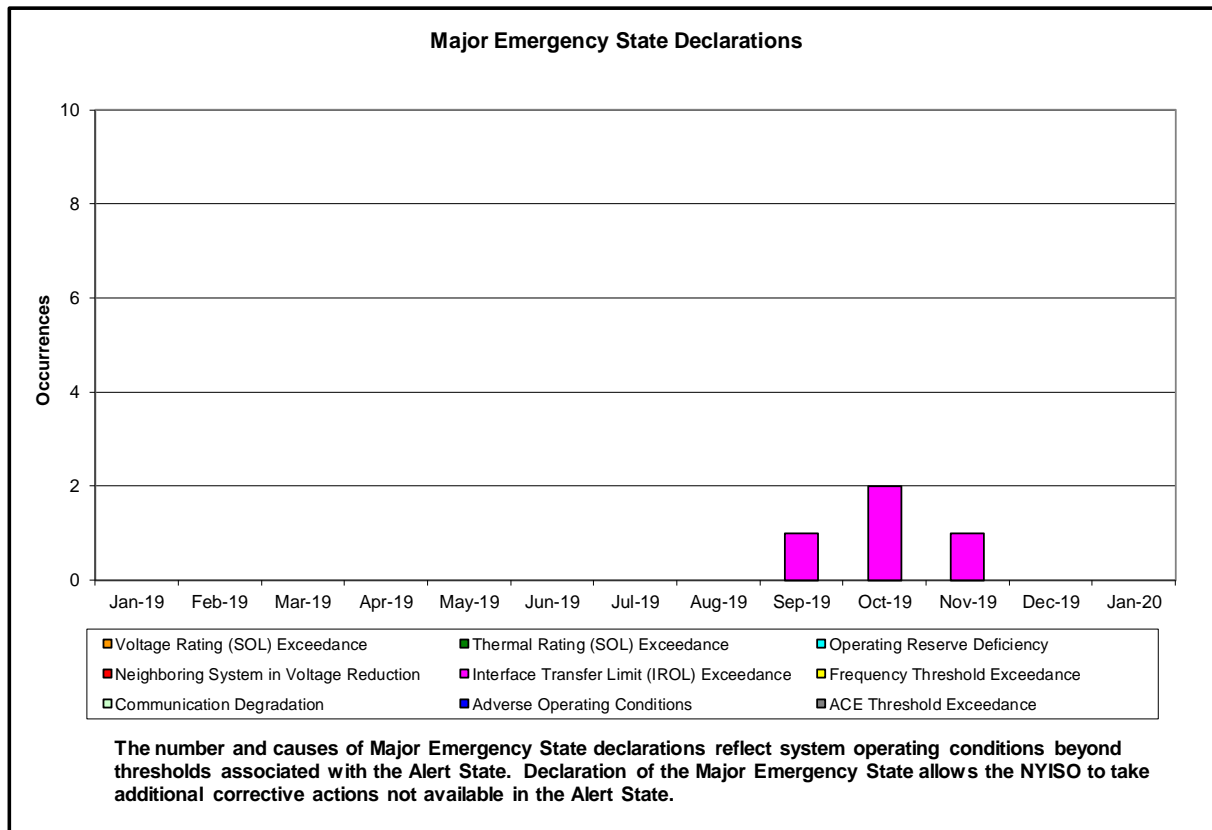
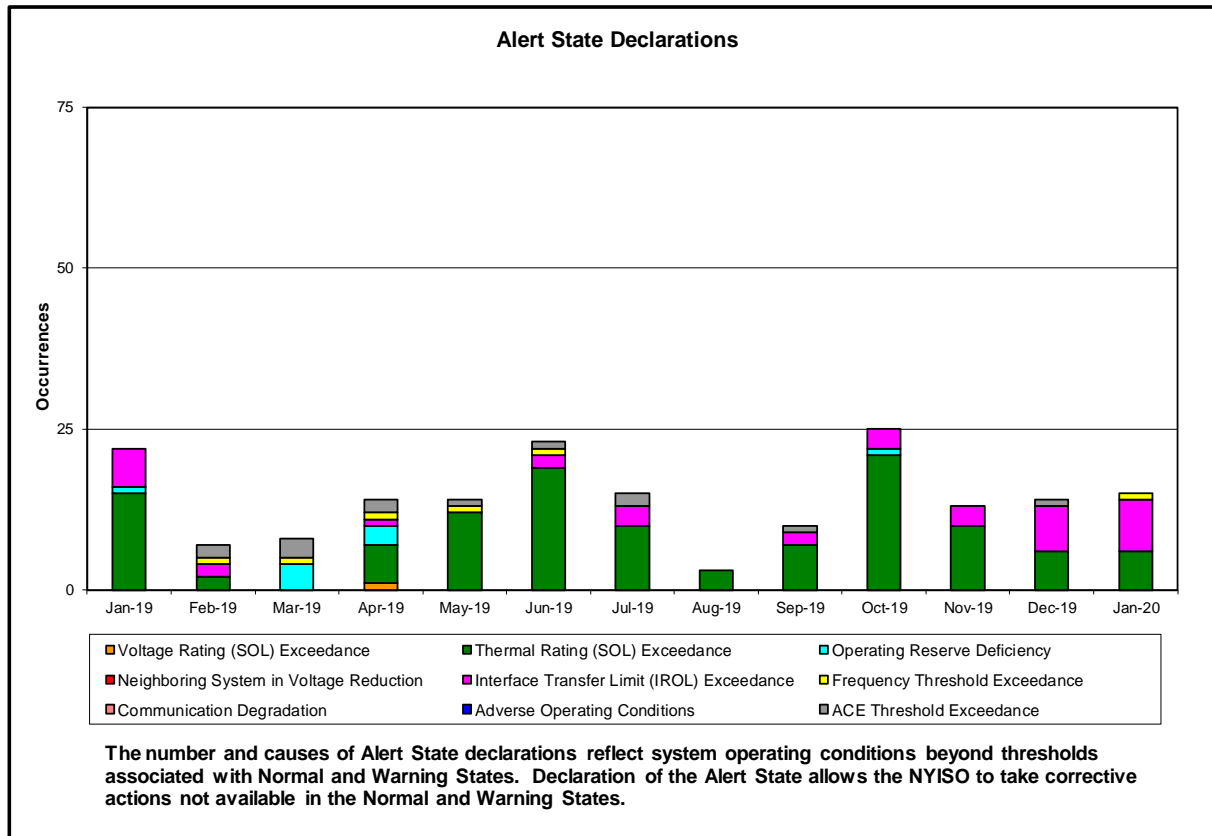
- Peak load of 21,895 MW occurred on 01/20/2020 HB 18
- All-time winter capability period peak load of 25,738 MW occurred on 1/7/2014 HB 18
- 0 hours of Thunder Storm Alerts were declared
- 6 hours of NERC TLR level 3 curtailment
- NYISO achieved a wind energy record of 1,748MW on 01/11/2020 HB09 providing 11% of the state's electrical demand in that hour.
- The following table identifies the estimated production cost savings associated with the Broader Regional Market initiatives.

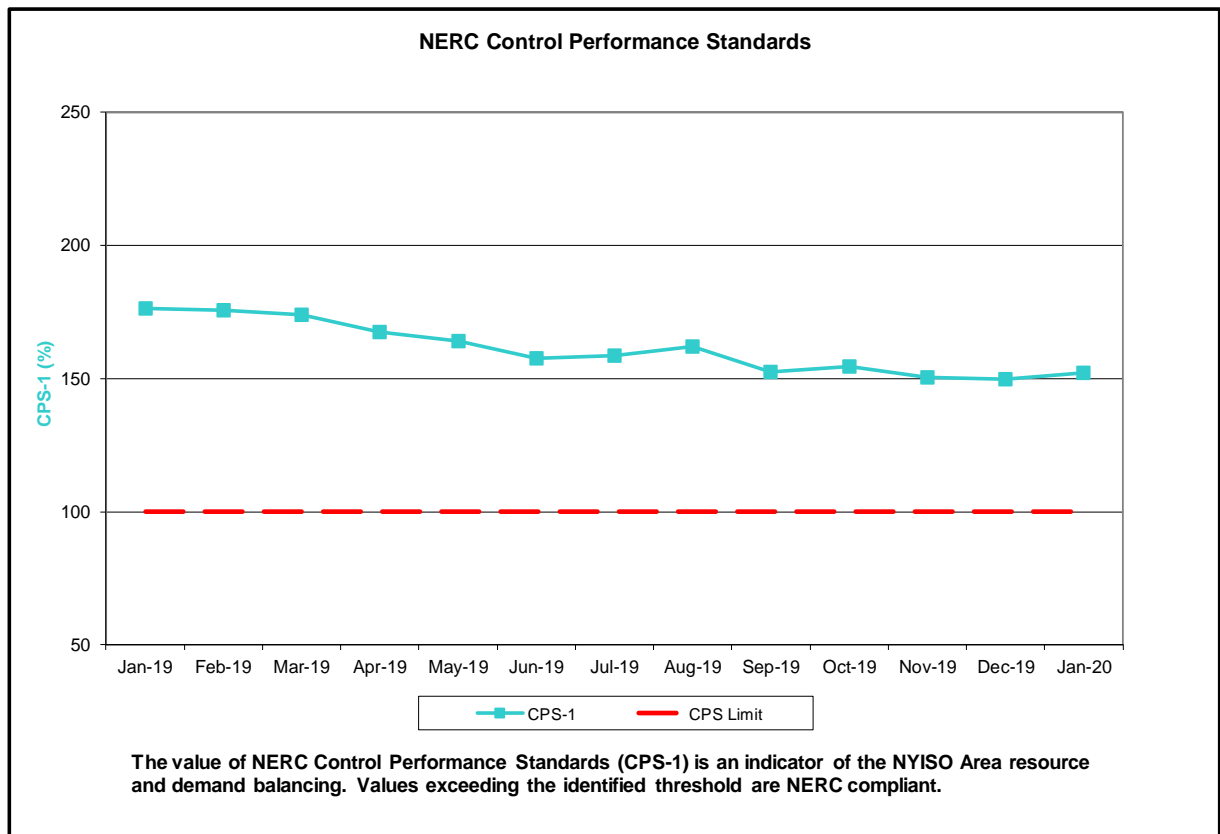
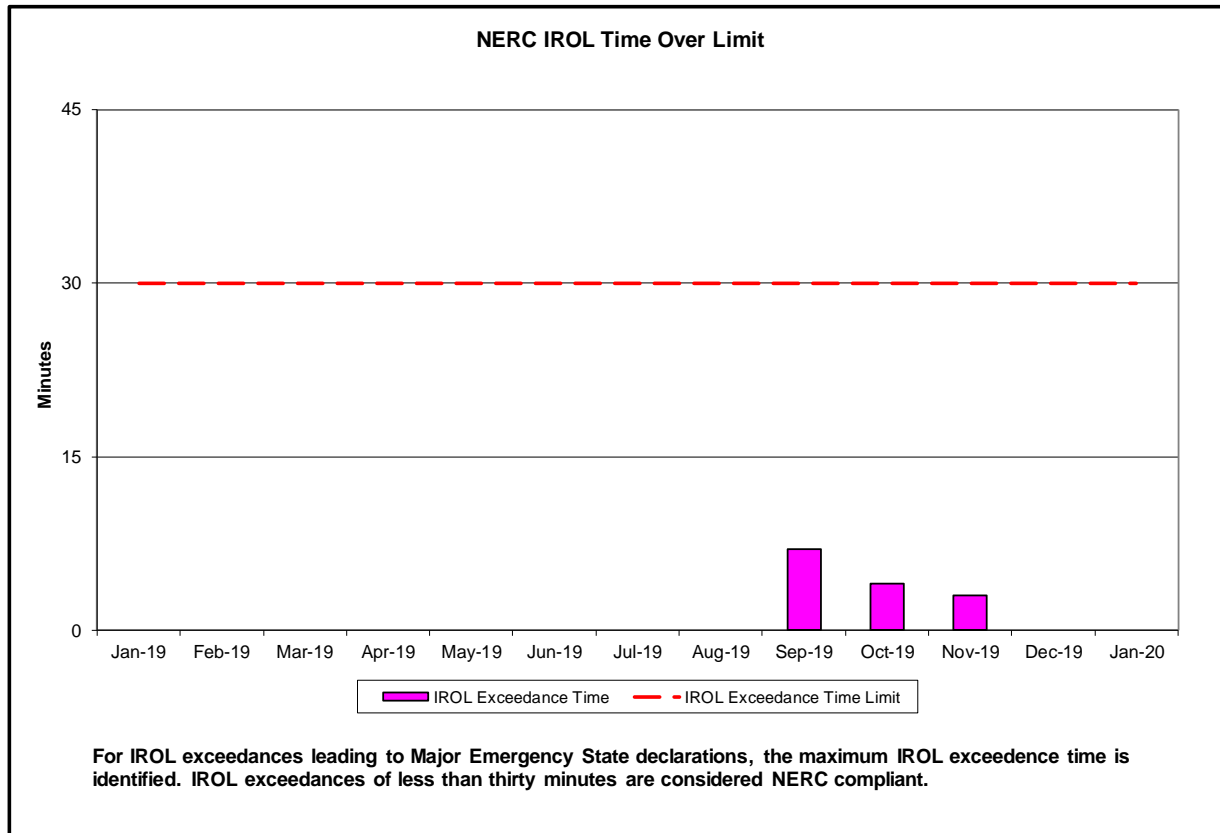
	Current Month Value (\$M)	Year-to-Date Value (\$M)
<b>NY Savings from PJM-NY Congestion Coordination</b>	\$2.49	\$2.49
<b>NY Savings from PJM-NY Coordinated Transaction Scheduling</b>	(\$0.03)	(\$0.03)
<b>NY Savings from NE-NY Coordinated Transaction Scheduling</b>	(\$0.12)	(\$0.12)
<b>Total NY Savings</b>	\$2.34	\$2.34
<b>Regional Savings from PJM-NY Coordinated Transaction Scheduling</b>	\$0.20	\$0.20
<b>Regional Savings from NE-NY Coordinated Transaction Scheduling</b>	\$0.02	\$0.02
<b>Total Regional Savings</b>	\$0.22	\$0.22

- Statewide uplift cost monthly average was (\$0.22)/MWh
- The following table identifies the Monthly ICAP spot market prices and the price delta.

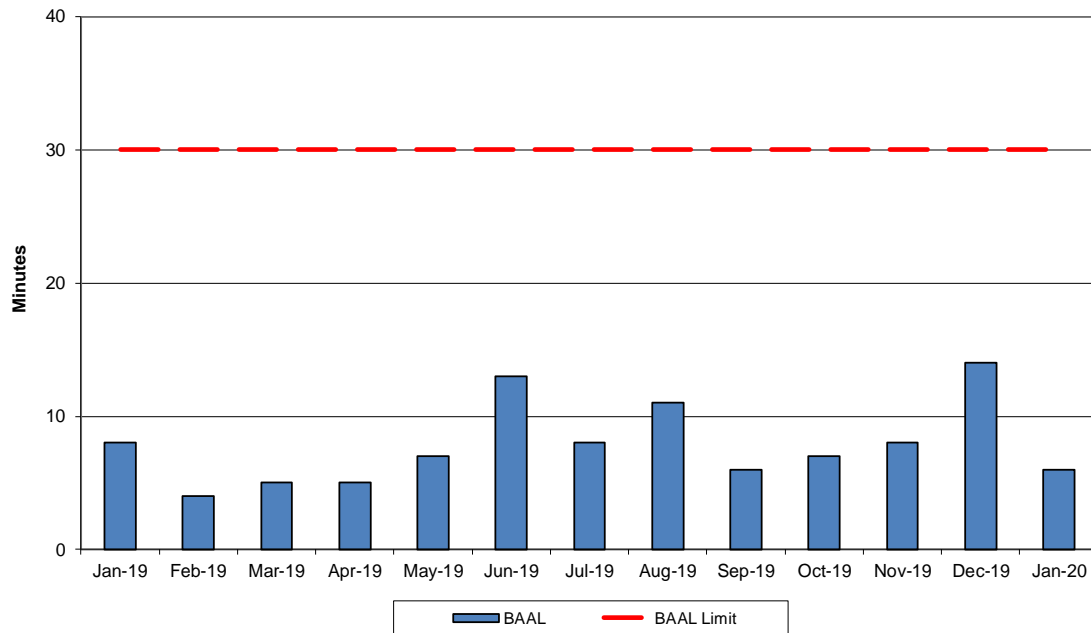
Spot Auction Price Results	NYCA	Lower Hudson Valley Zones	New York City Zone	Long Island Zone
February 2020 Spot Price	\$0.01	\$0.01	\$3.71	\$0.01
January 2020 Spot Price	\$0.09	\$0.09	\$3.71	\$0.09
Delta	(\$0.08)	(\$0.08)	\$0.00	(\$0.08)

## Reliability Performance Metrics



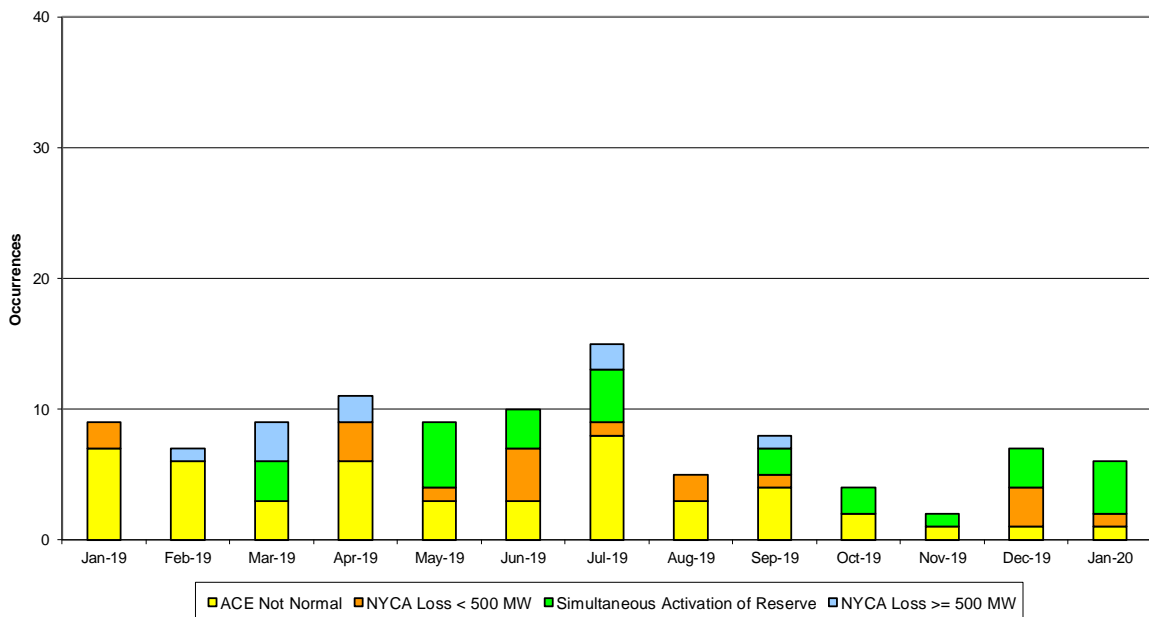


### NERC Balancing Authority ACE Limit Standard



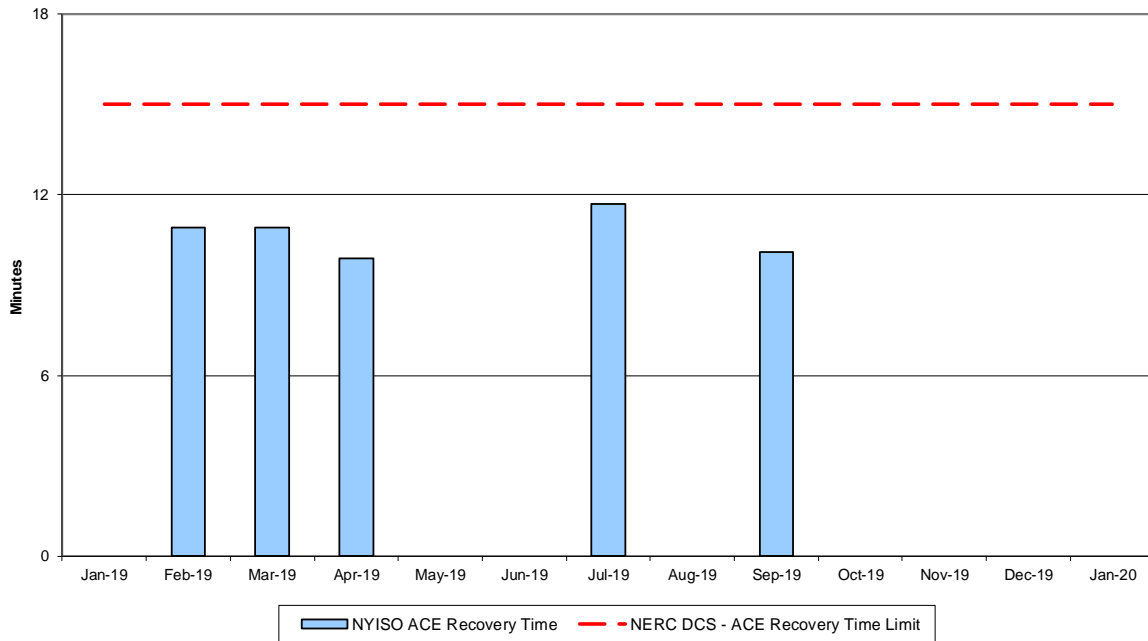
The amount of time the clock-minute average ACE exceeds the clock-minute Balancing Authority ACE Limit (BAAL) is an indicator of the NYISO Area resource and demand balancing. The maximum BAAL exceedance time is identified. BAAL exceedances of less than 30 consecutive clock-minutes are NERC compliant.

### Reserve Activations



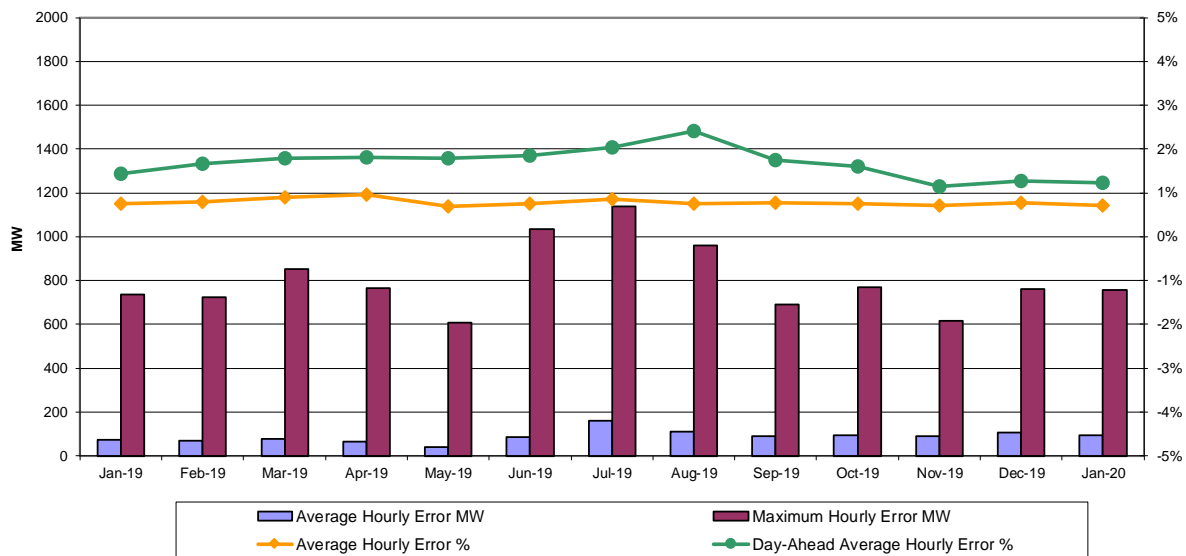
NYISO Reserve Activations are indicators of the need to respond to unexpected operational conditions within the NYISO Area or to assist a neighboring Area (Simultaneous Activation of Reserves) by activating an immediate resource and demand balancing operation.

### DCS Event Time to ACE Recovery



For NYISO initiated Reportable Disturbances, the maximum ACE recovery time is identified. Recovery times of less than 15 minutes are considered NERC compliant.

### Load Forecast Performance

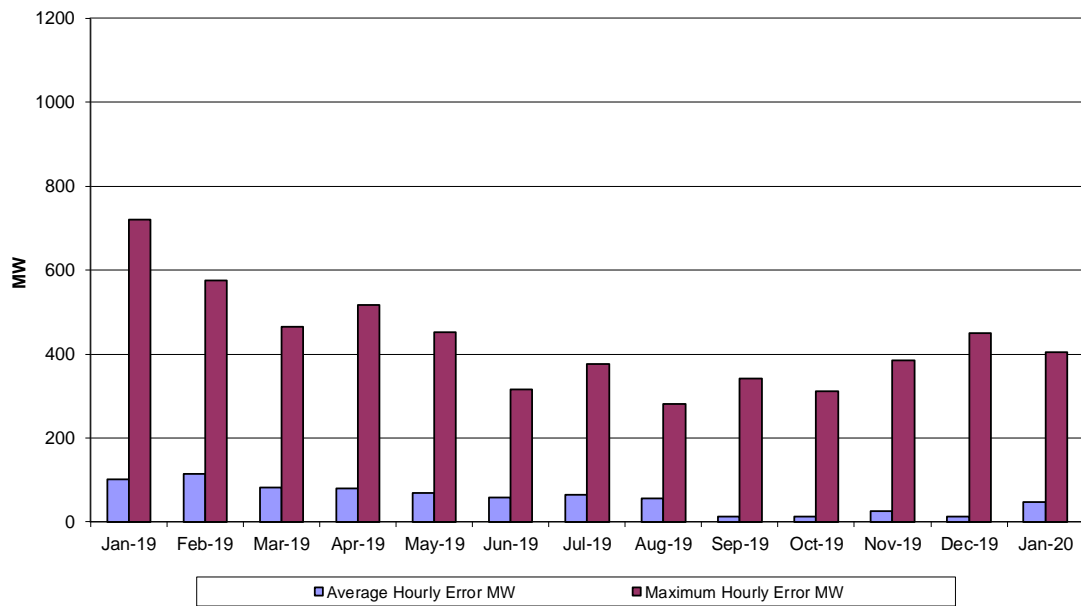


**Hourly Error MW** - Absolute value of the difference between the hourly average actual load demand and the average hour ahead forecast load demand.

**Average Hourly Error %** - Average value of the ratio of hourly average error magnitude to hourly average actual load demand.

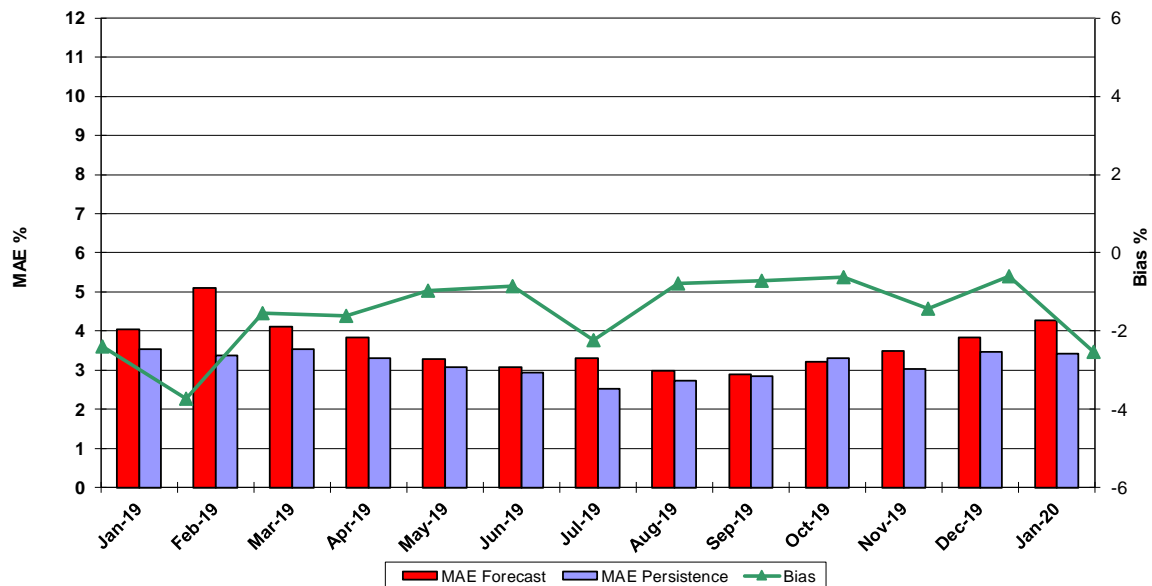
**Day-Ahead Average Hourly Error %** - Average across all hours of the month of the absolute value of the difference between actual load demand and the Day-Ahead forecast load demand, divided by the actual load demand.

### Wind Forecast Performance Hour Ahead MW Error



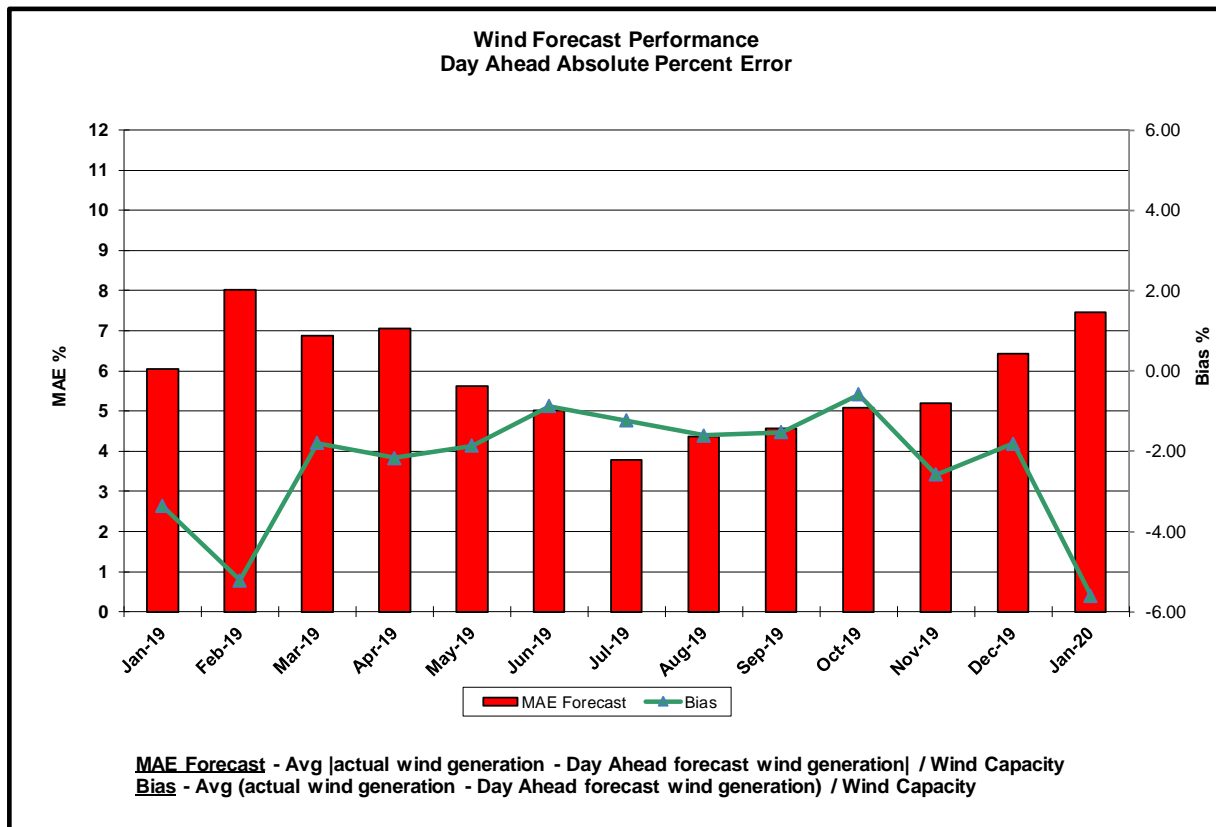
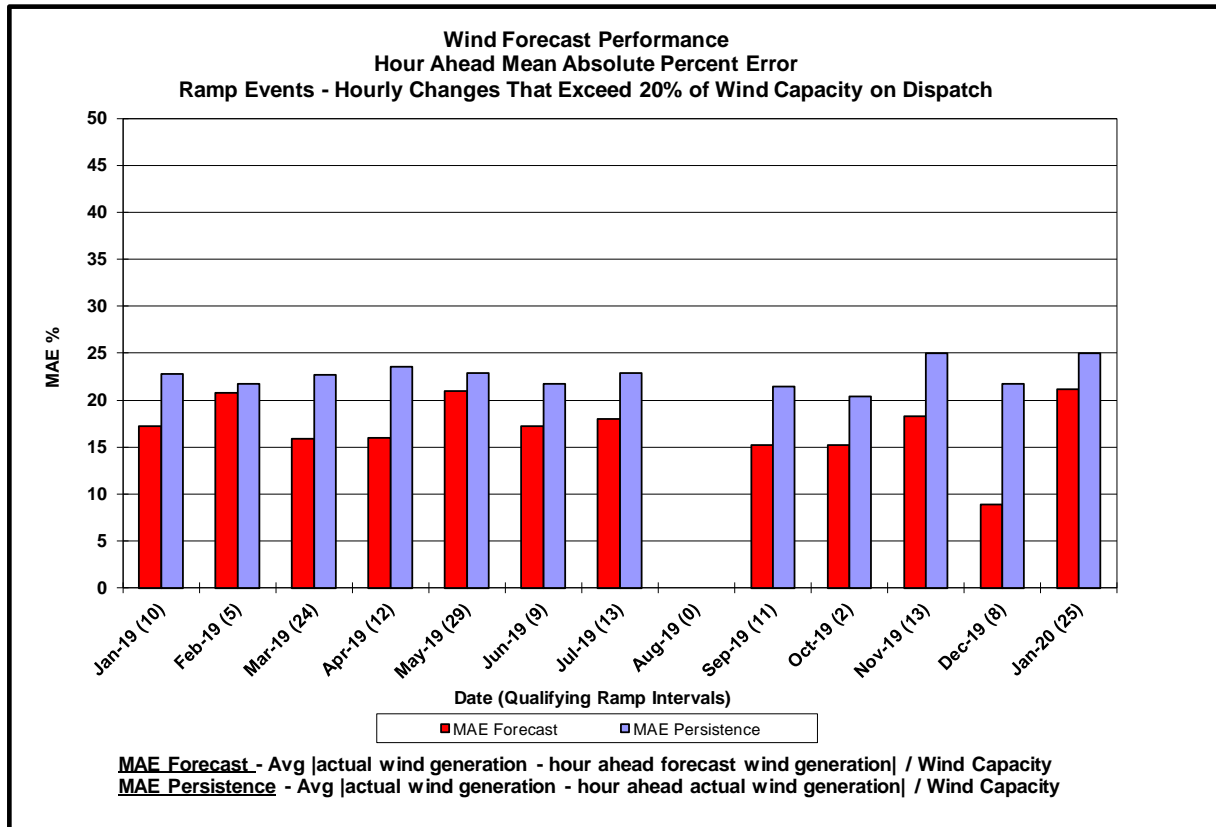
**Hourly Error MW** - Absolute value of the difference between the hourly average actual wind generation and the average hour ahead forecast wind generation.

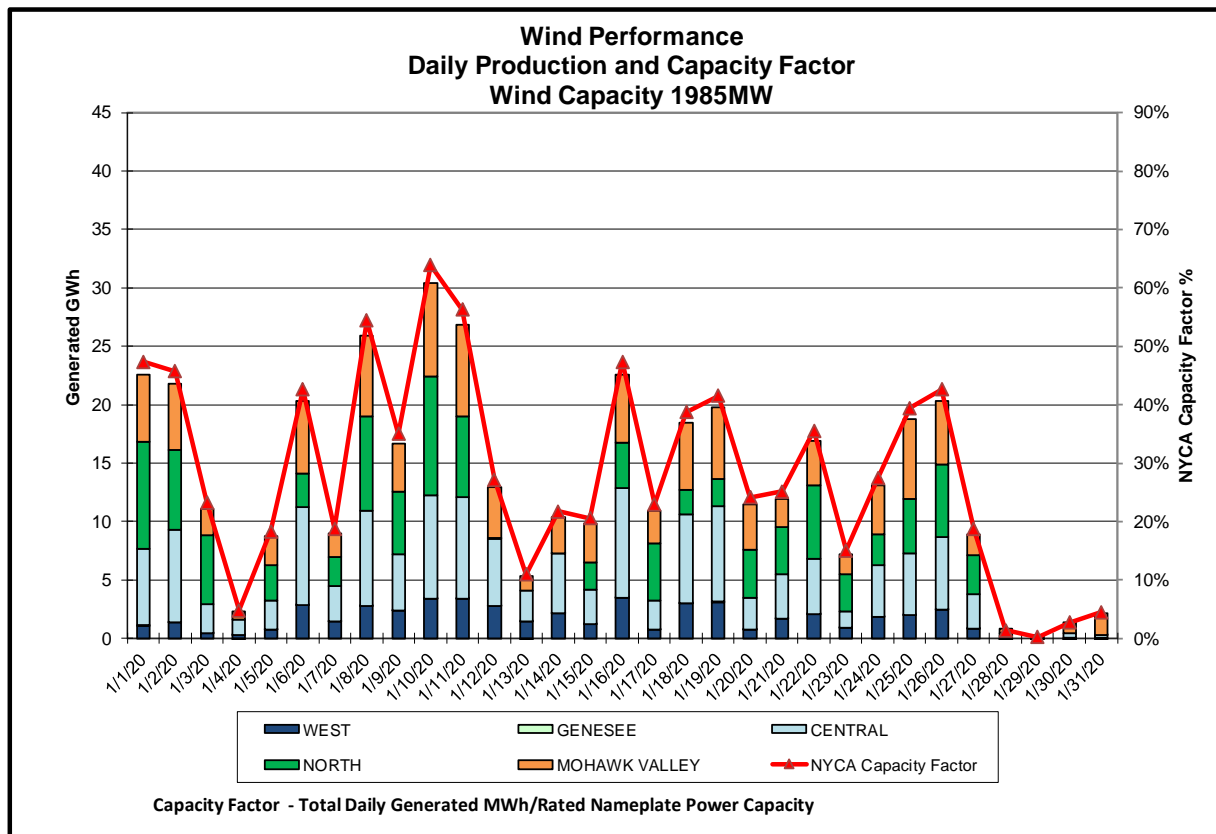
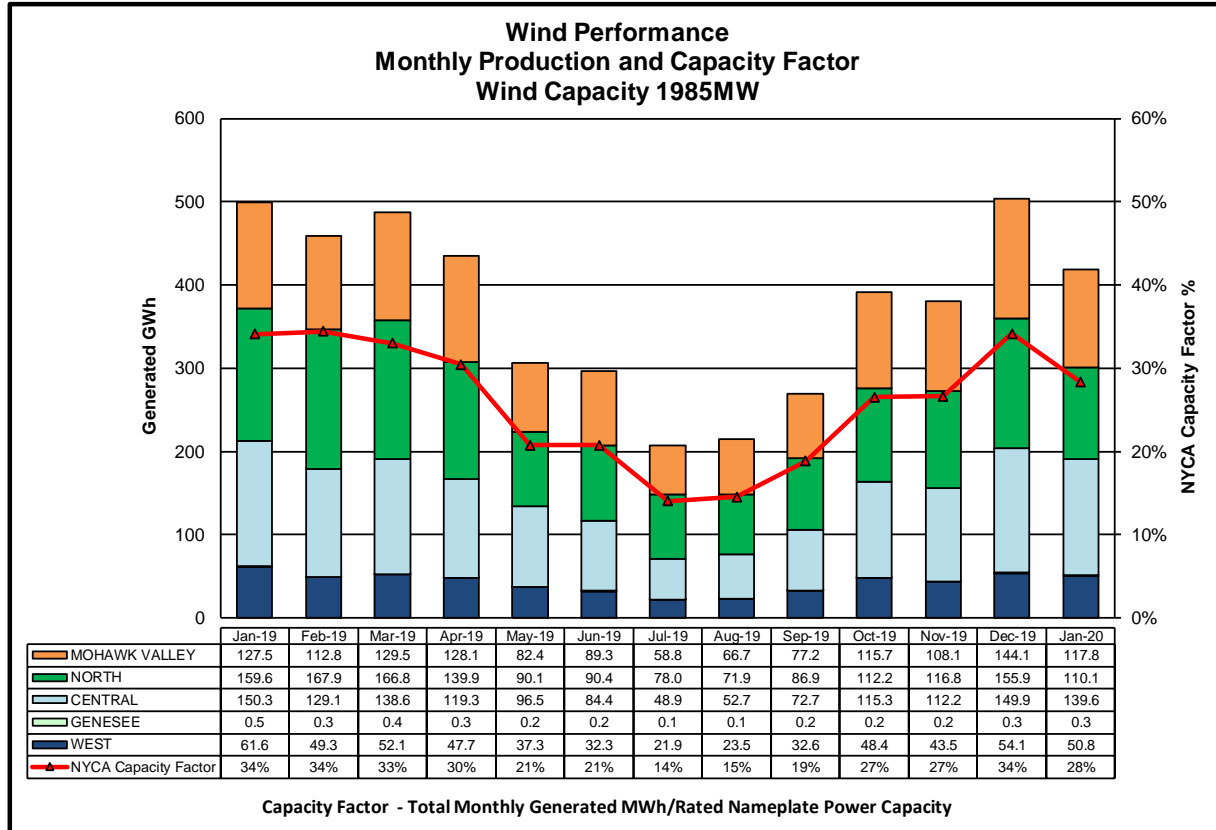
### Wind Forecast Performance Hour Ahead Percent Error

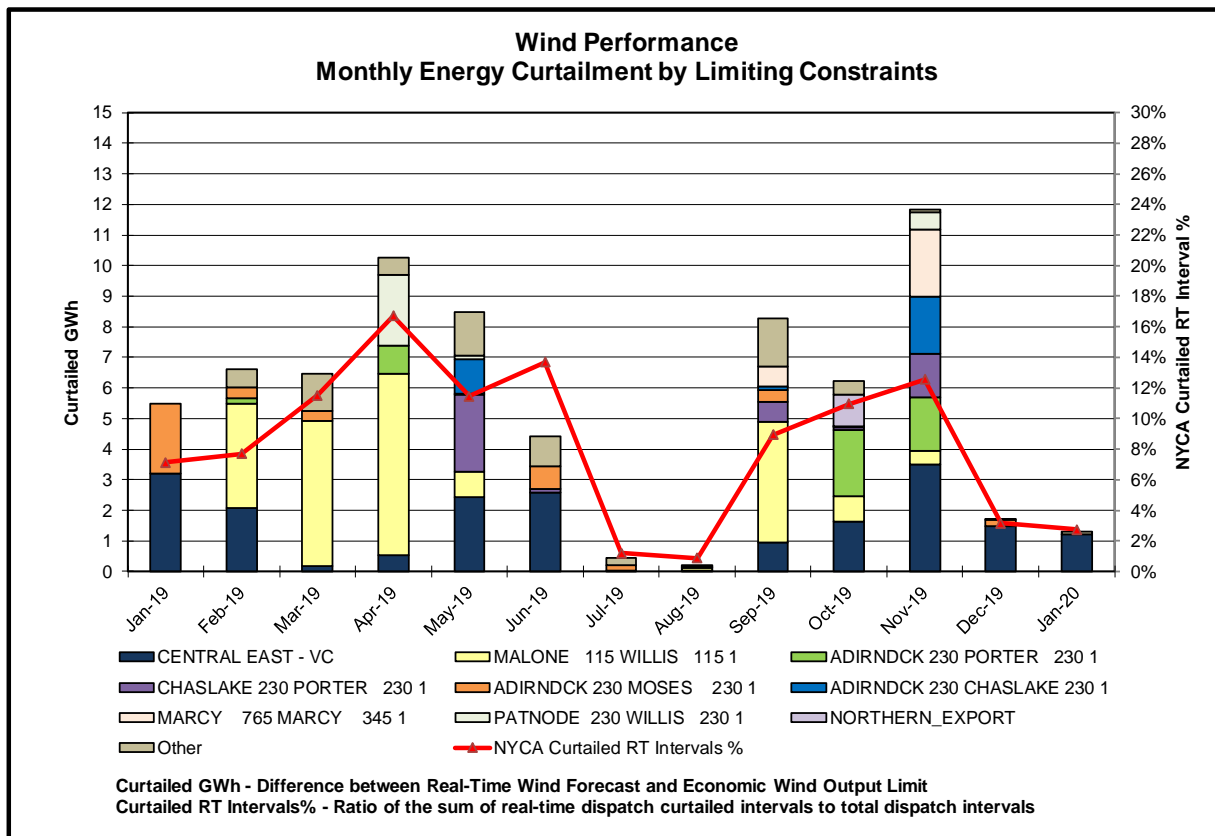
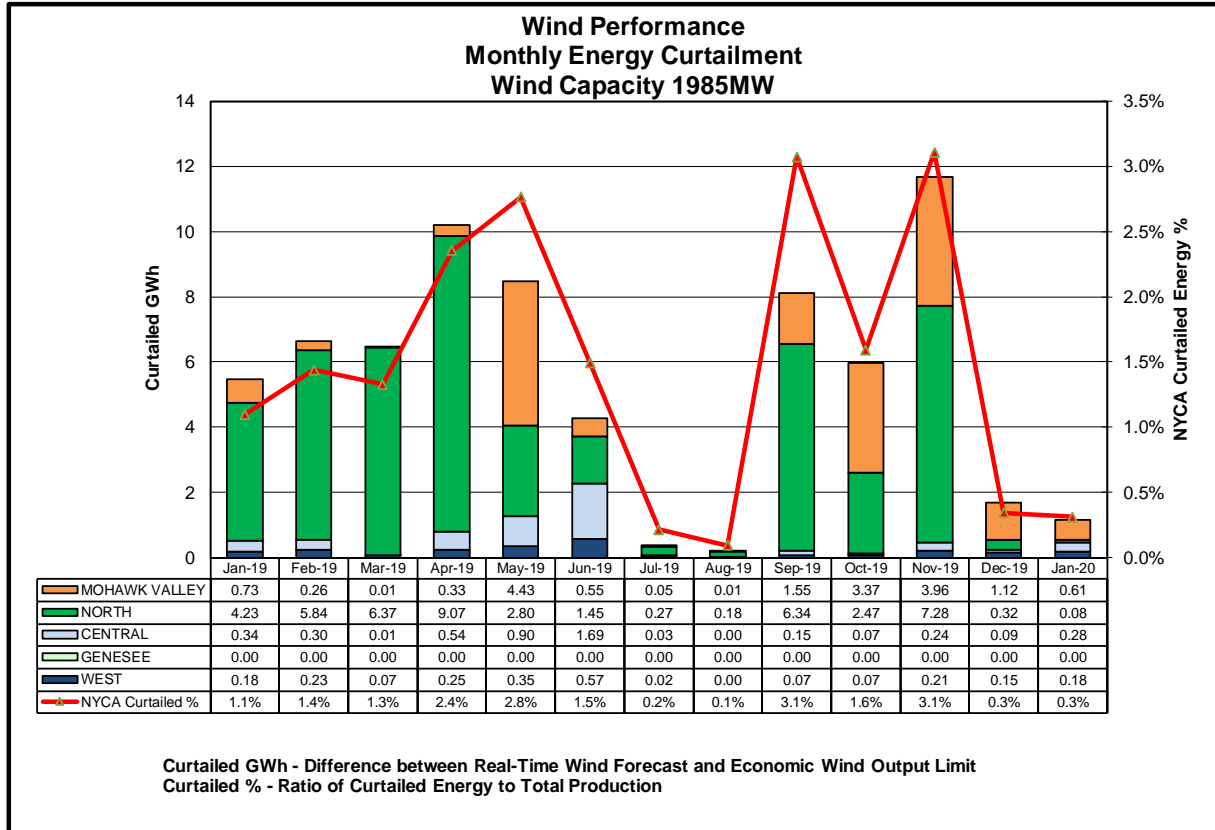


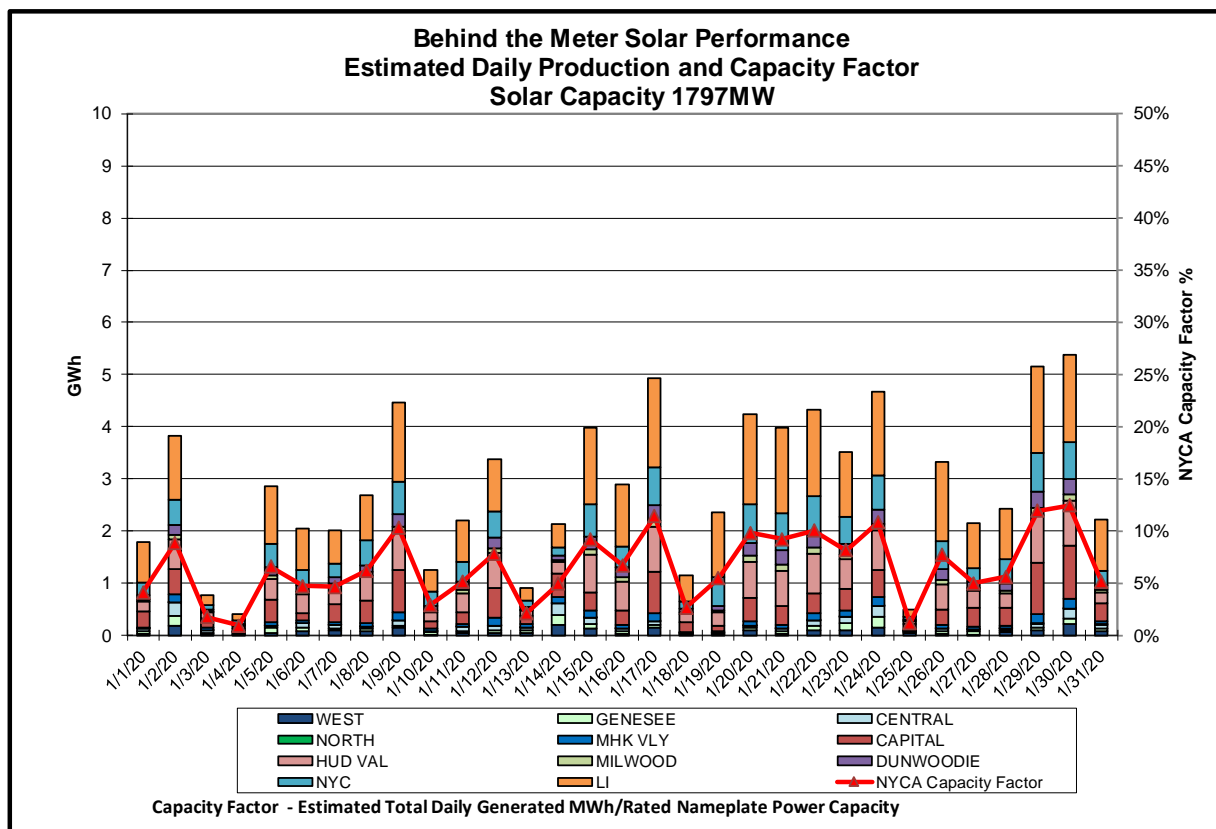
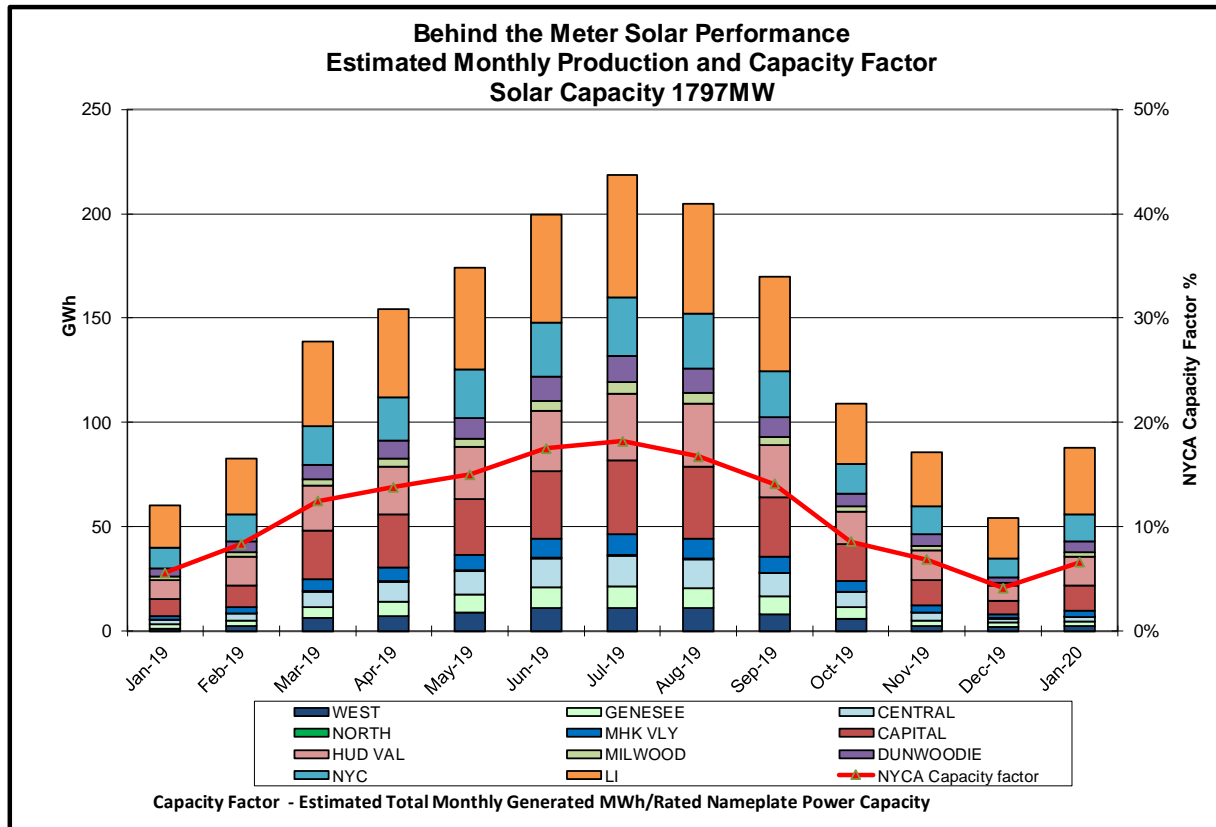
**MAE Forecast** - Avg [actual wind generation - hour ahead forecast wind generation] / Wind Capacity  
**MAE Persistence** - Avg [actual wind generation - hour ahead actual wind generation] / Wind Capacity  
**Bias** - Avg (actual wind generation - hour ahead forecast wind generation) / Wind Capacity

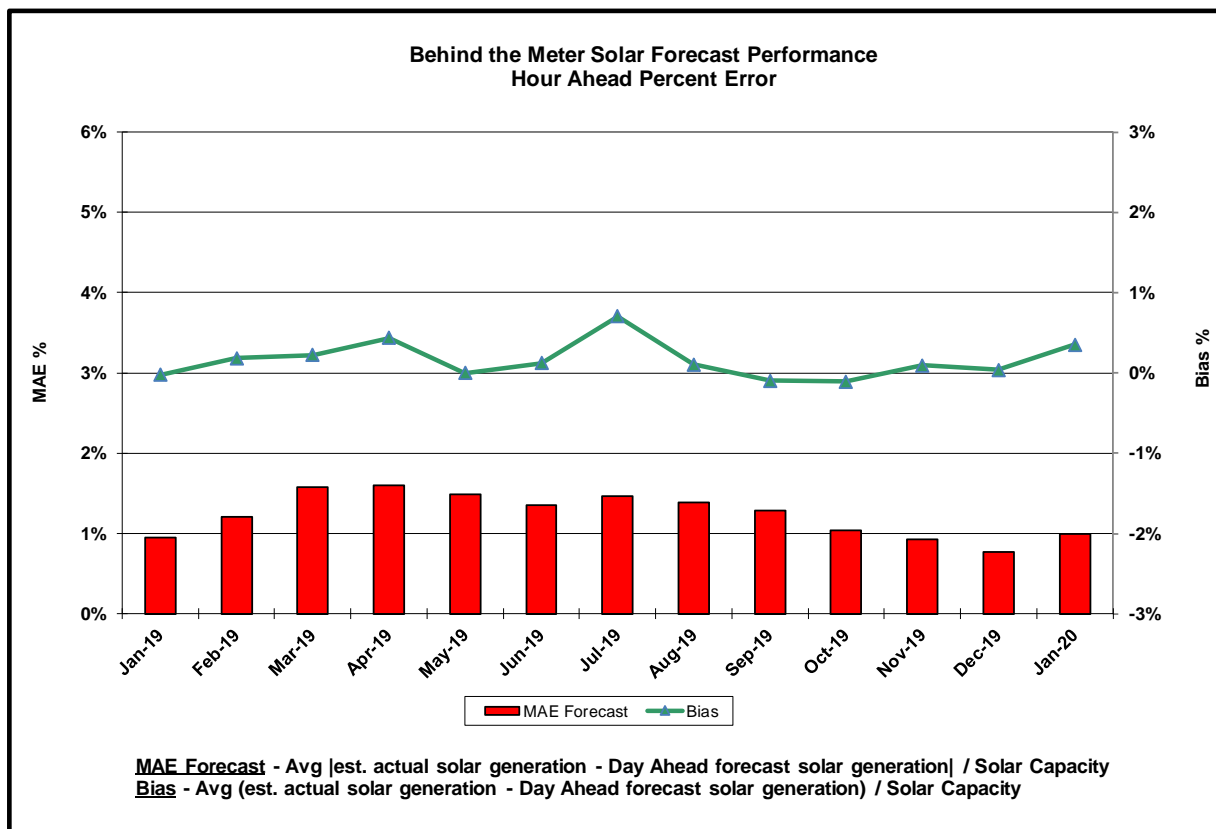
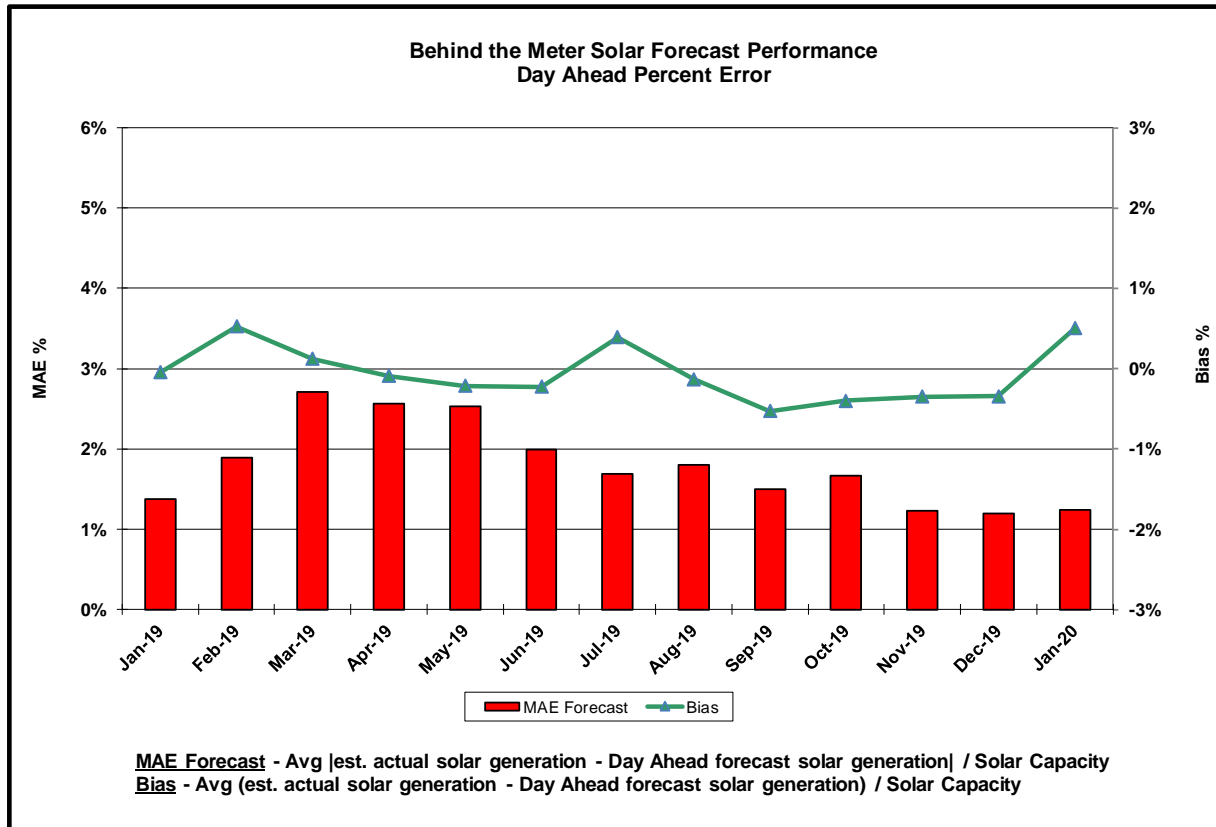


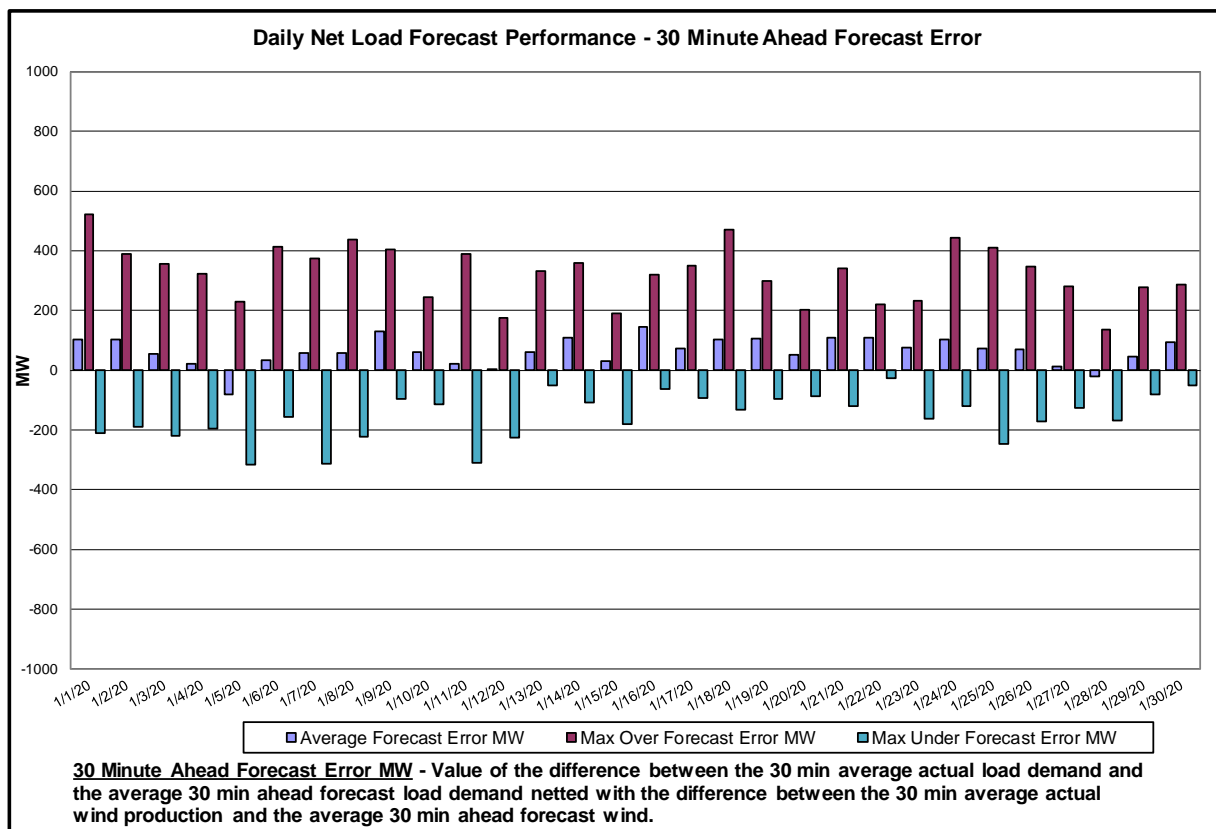
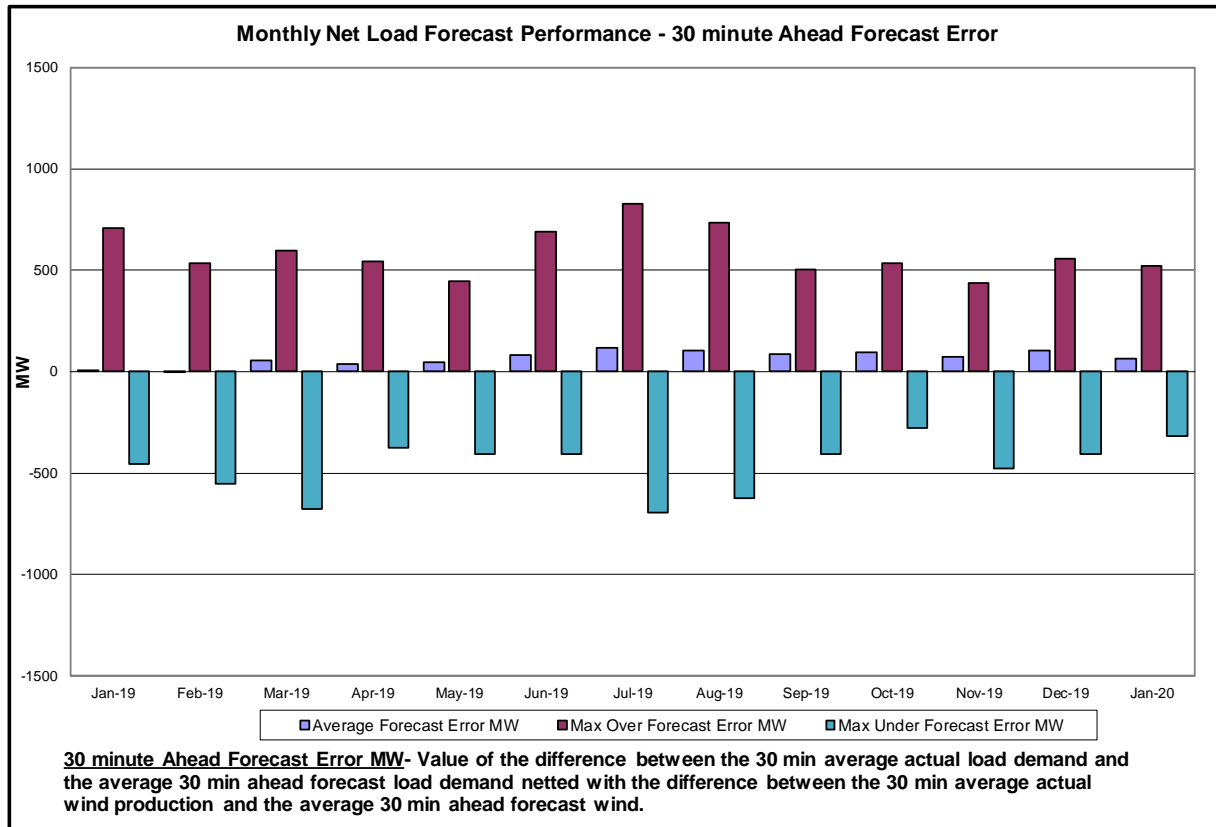


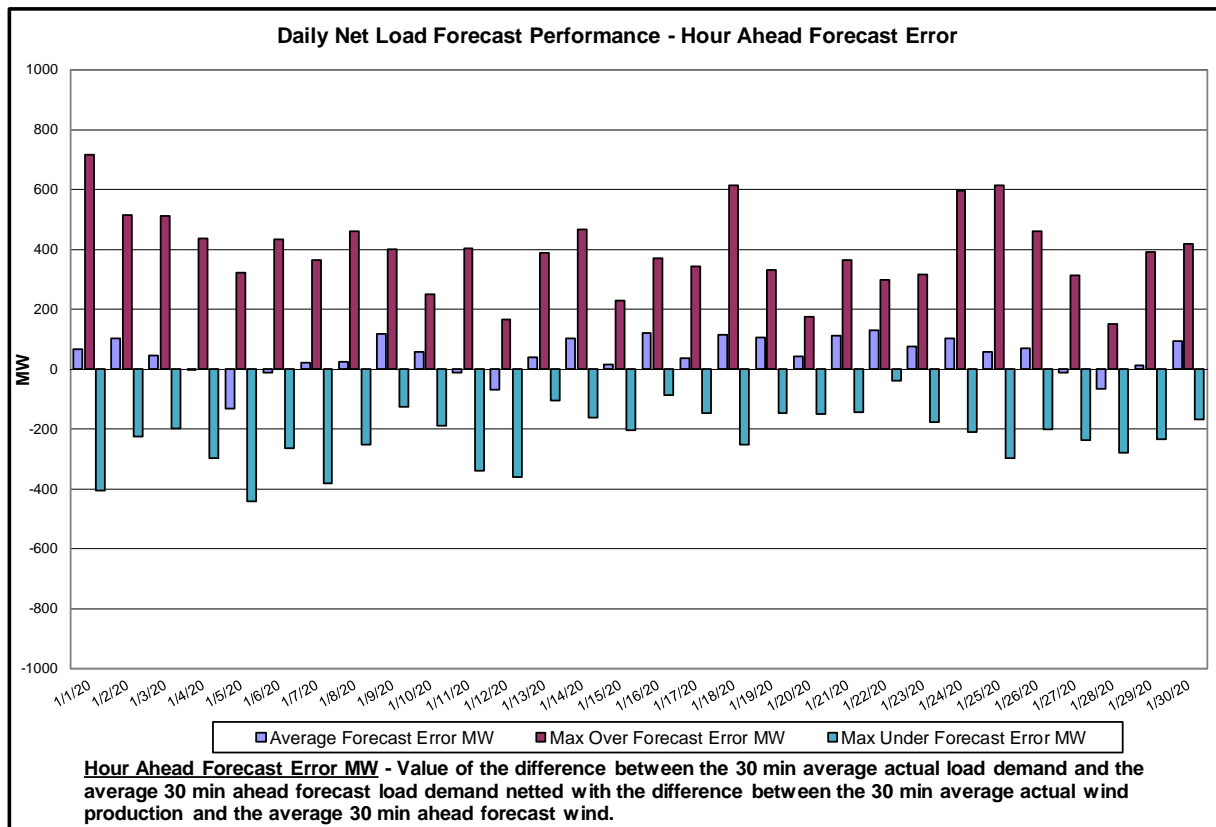
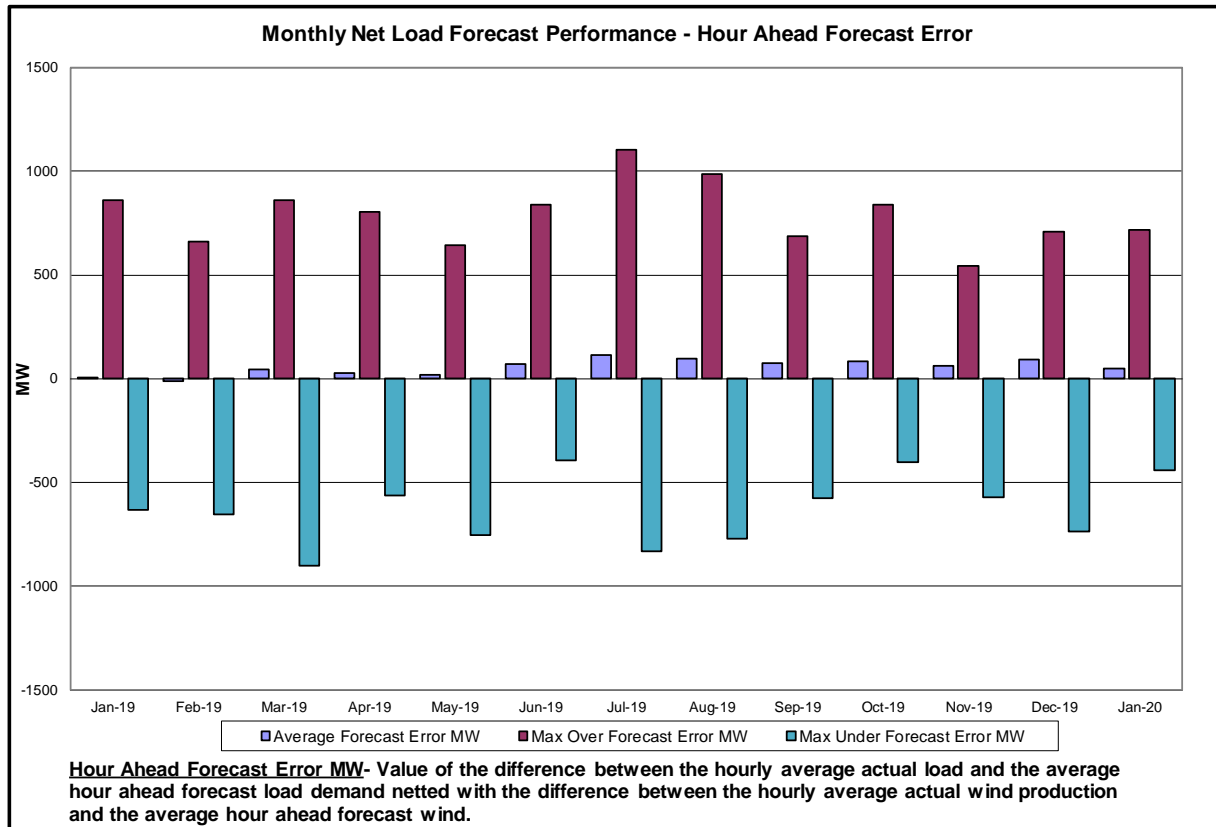


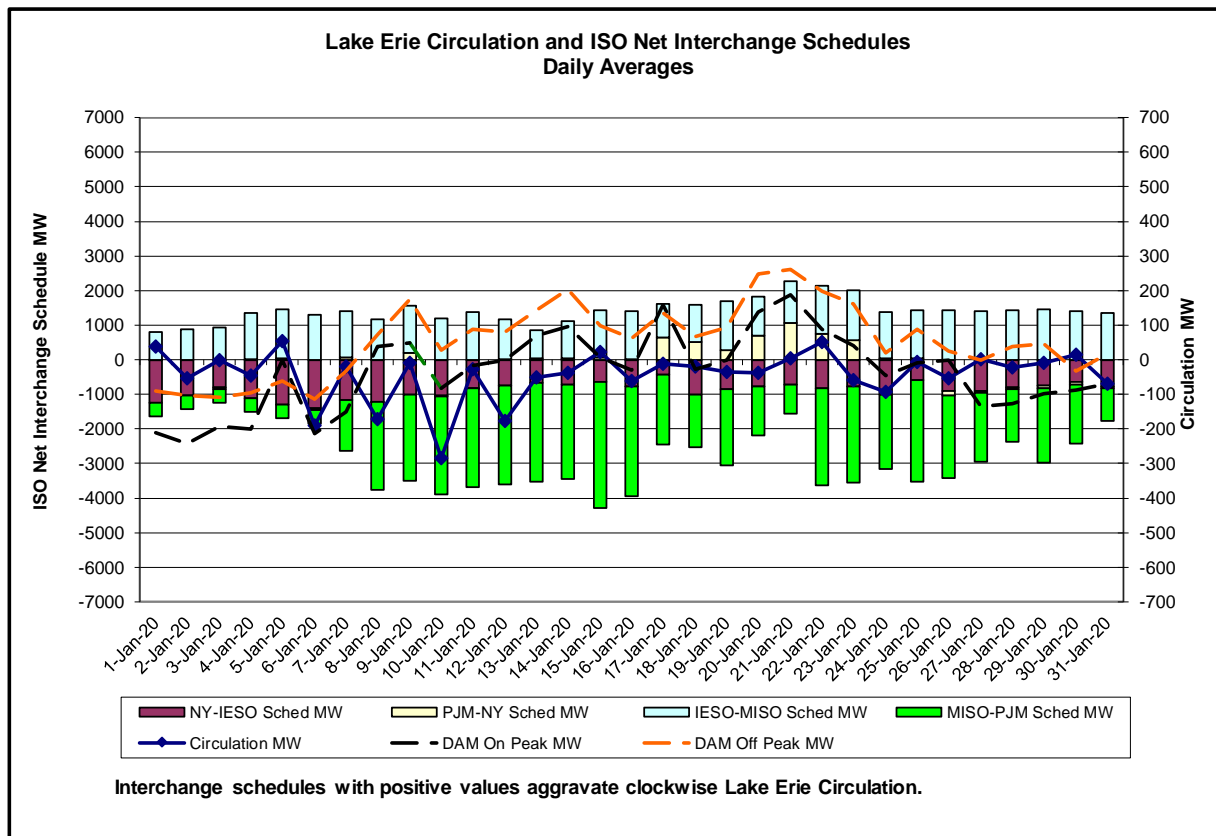
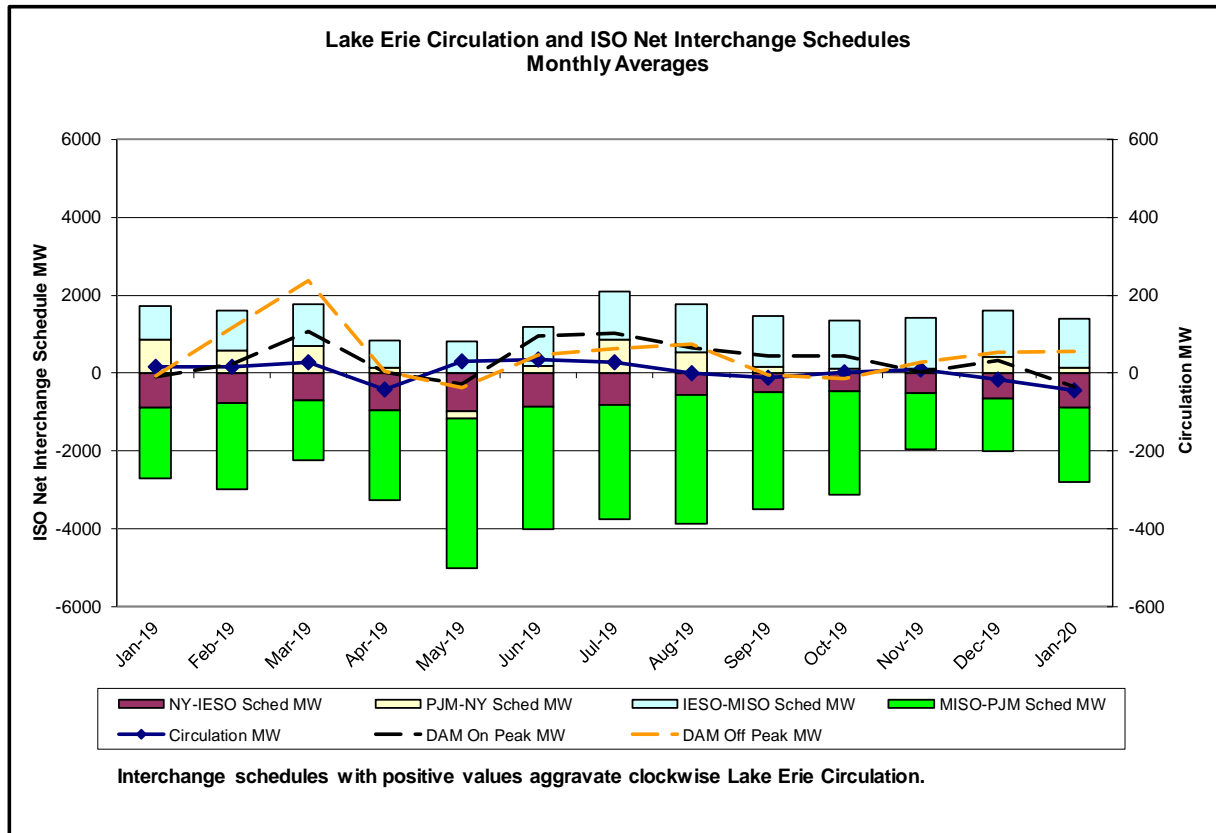






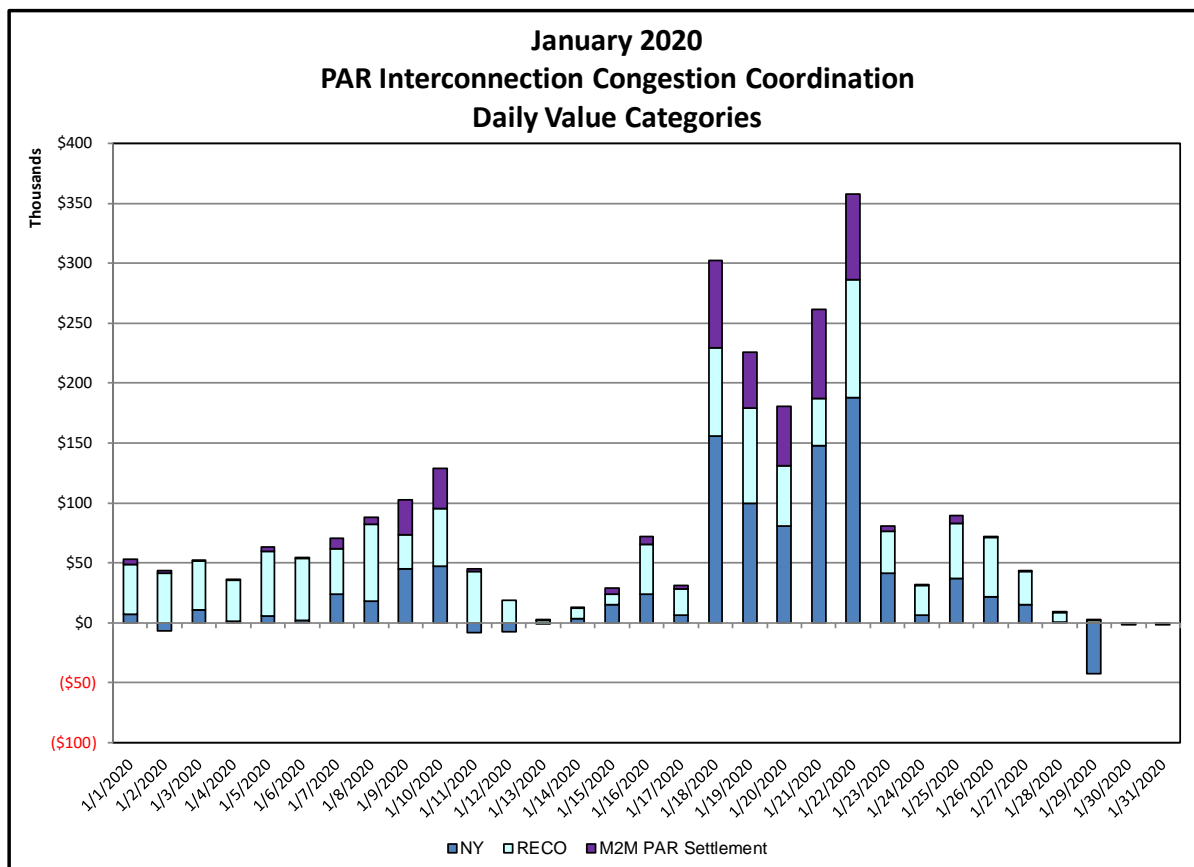
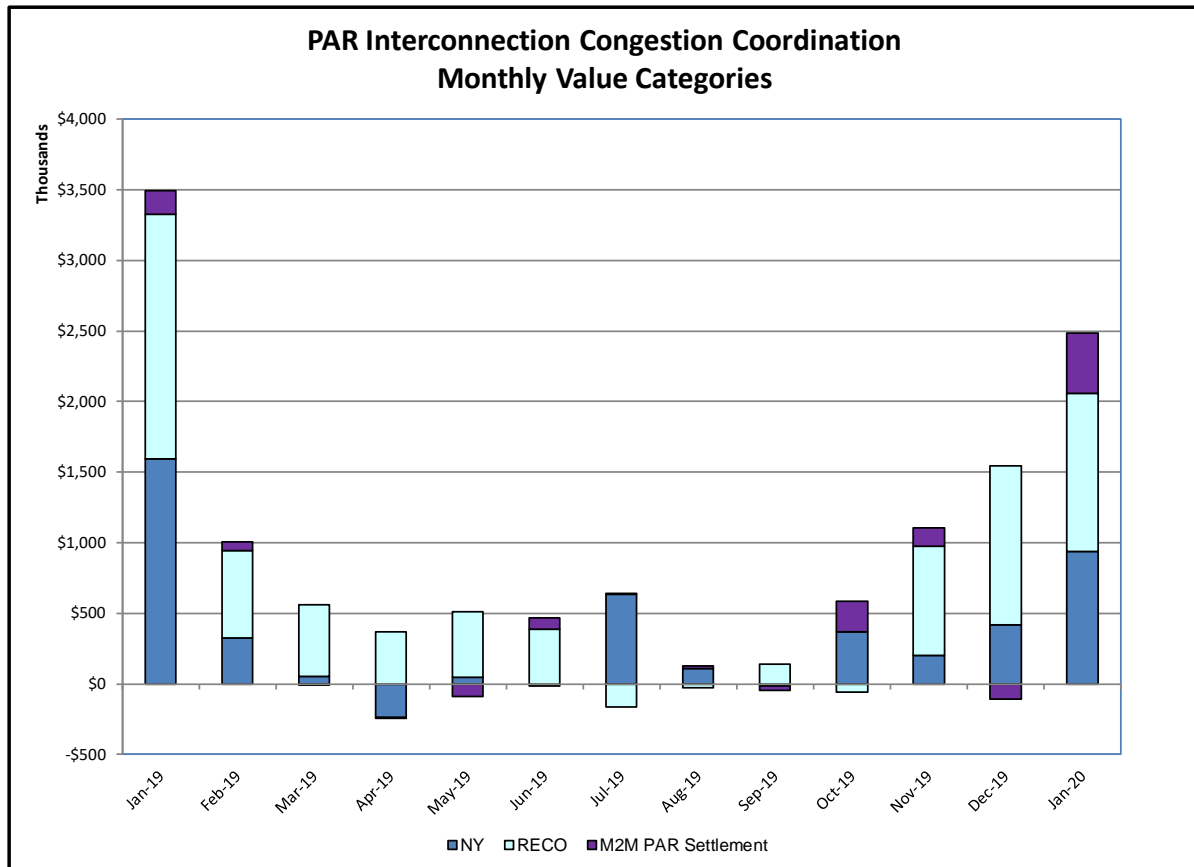






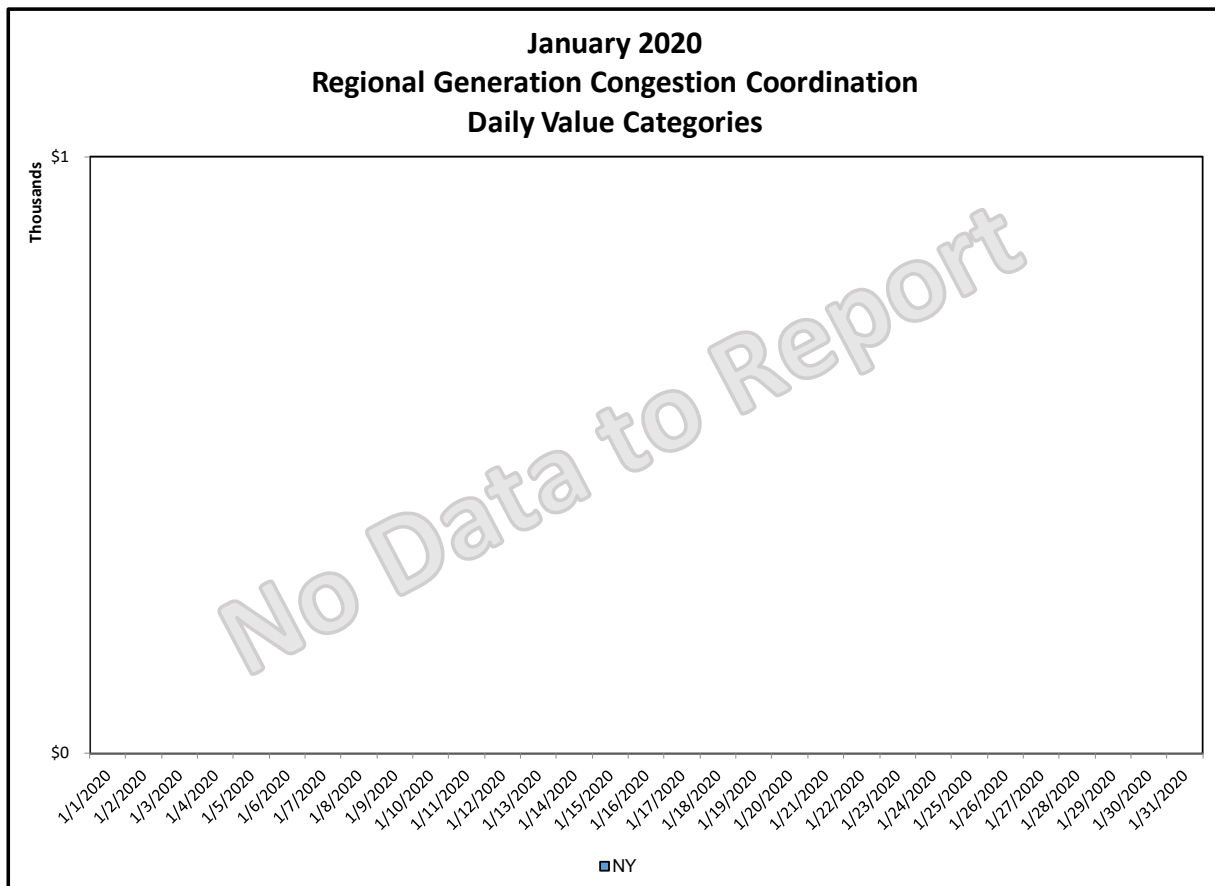
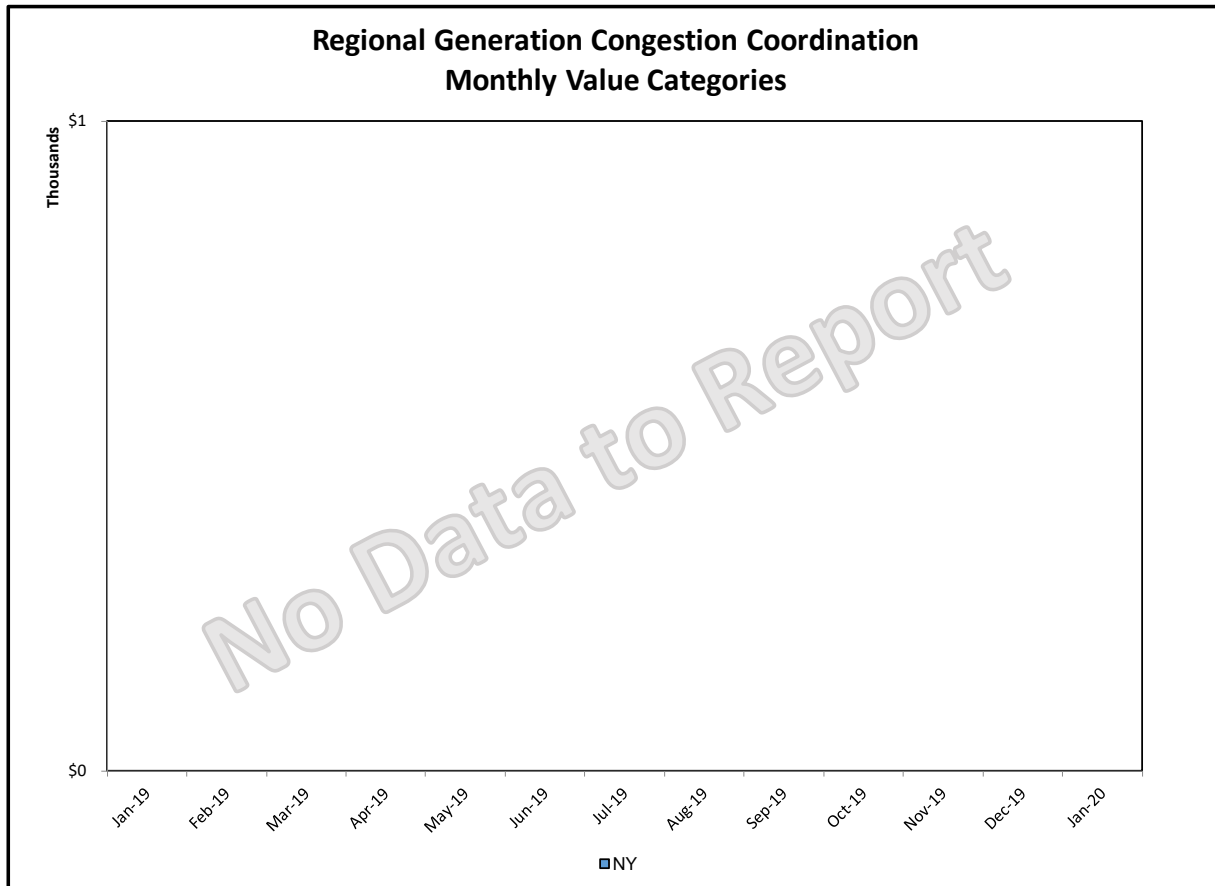


## Broader Regional Market Performance Metrics



### PAR Interconnection Congestion Coordination

<u>Category</u>	<u>Description</u>
NY	Represents the value NY realizes from Market-to-Market PAR Coordination when experiencing congestion. This is the estimated savings to NY for additional deliveries into NY
RECO	Represents the value of PJM's obligation to deliver 80% of service to RECO load over Ramapo 5018. This is the estimated reduction in NYCA congestion due to the PJM delivery of RECO over Ramapo 5018.
M2M PAR Settlement	Market-to-Market PAR Coordination settlement on coordinated flowgates. Through April 2017 this value was included in the NY and RECO categories. The positive sign convention indicates settlement to NY while the negative indicates settlement to PJM.



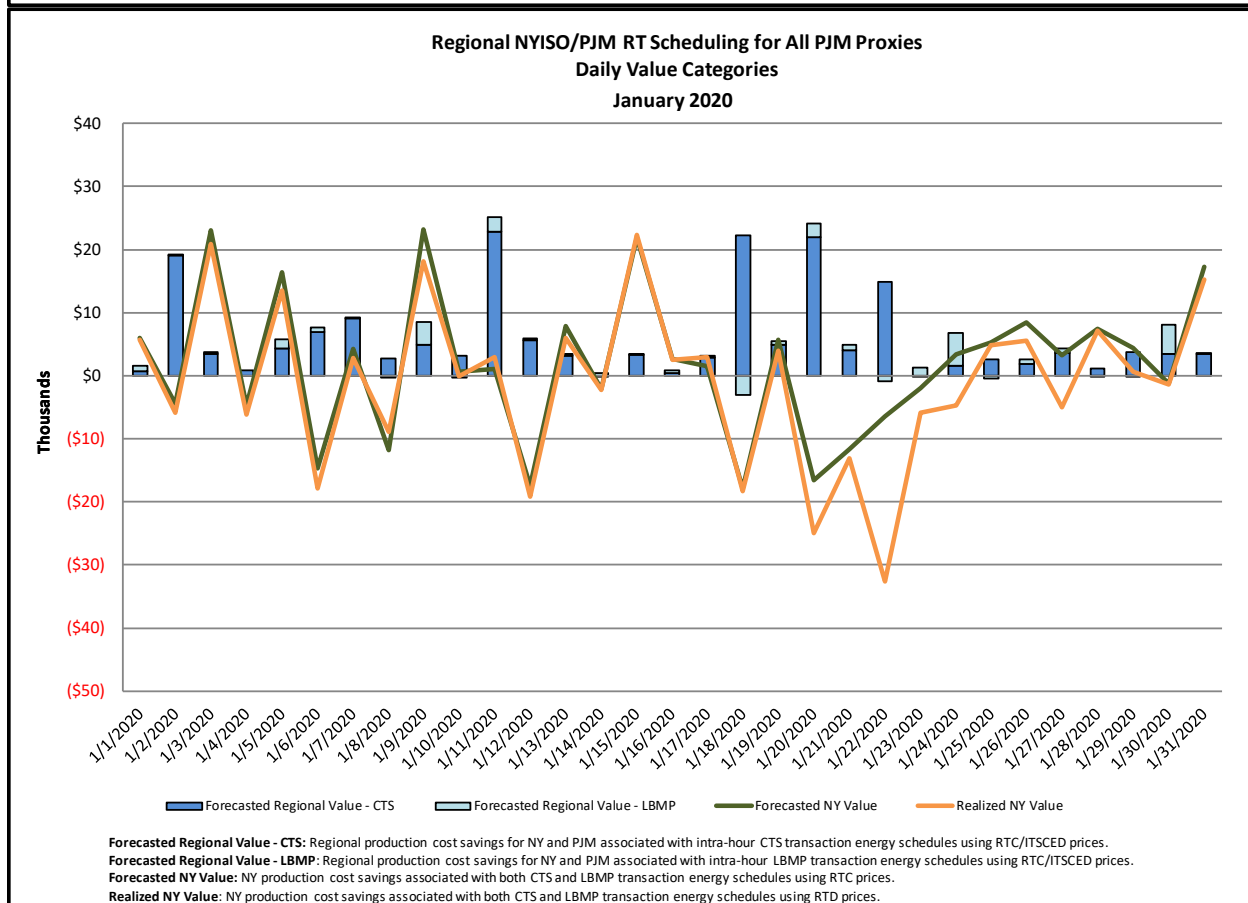
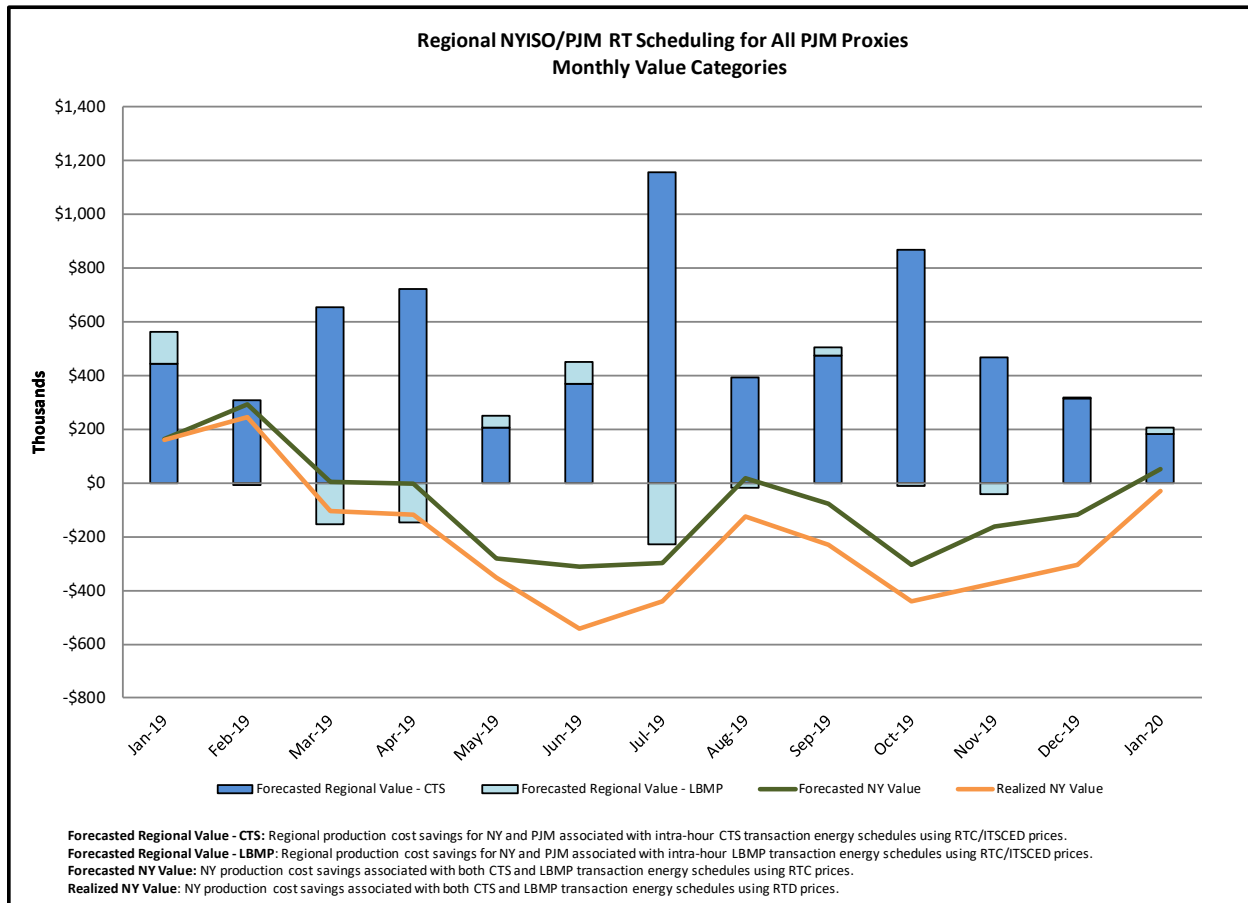
### **Regional Generation Congestion Coordination**

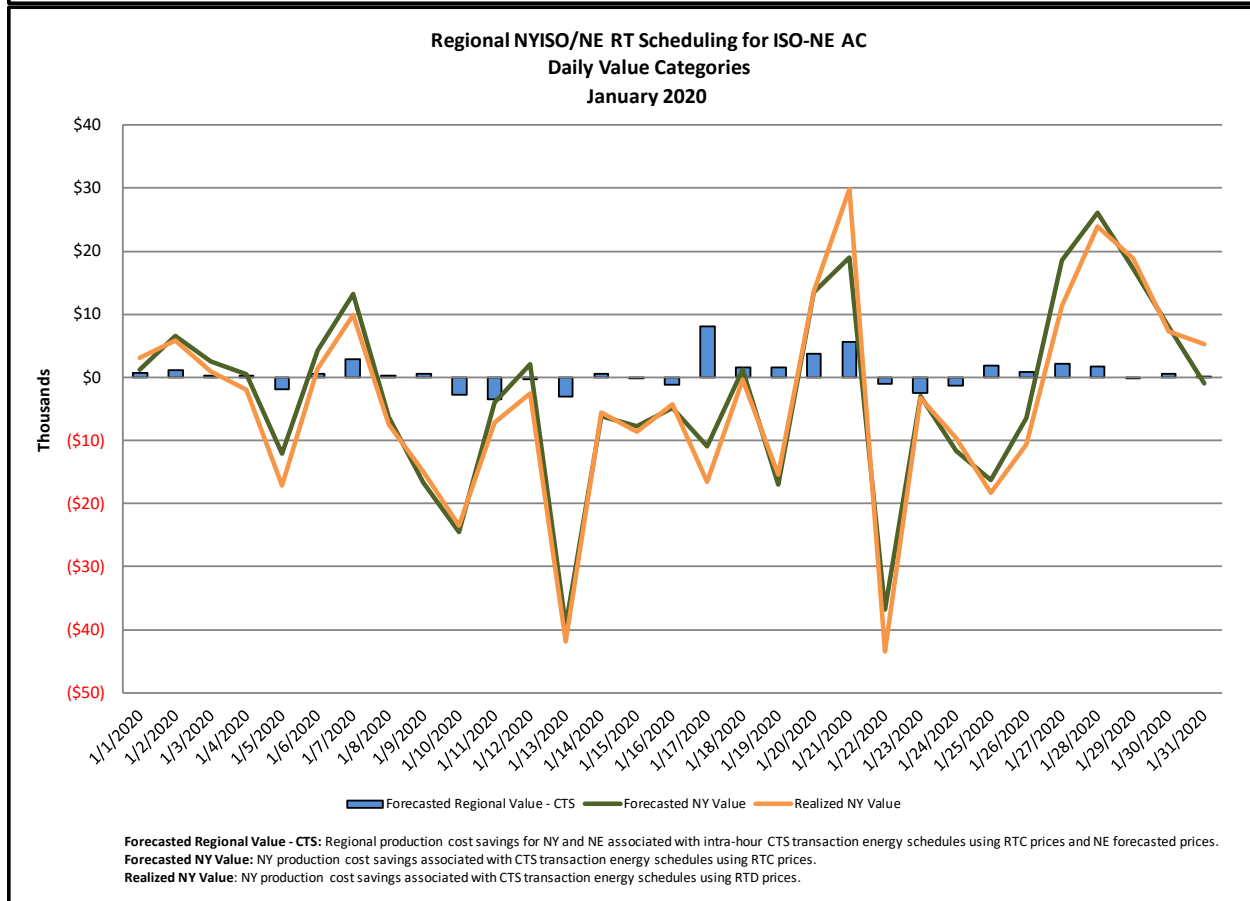
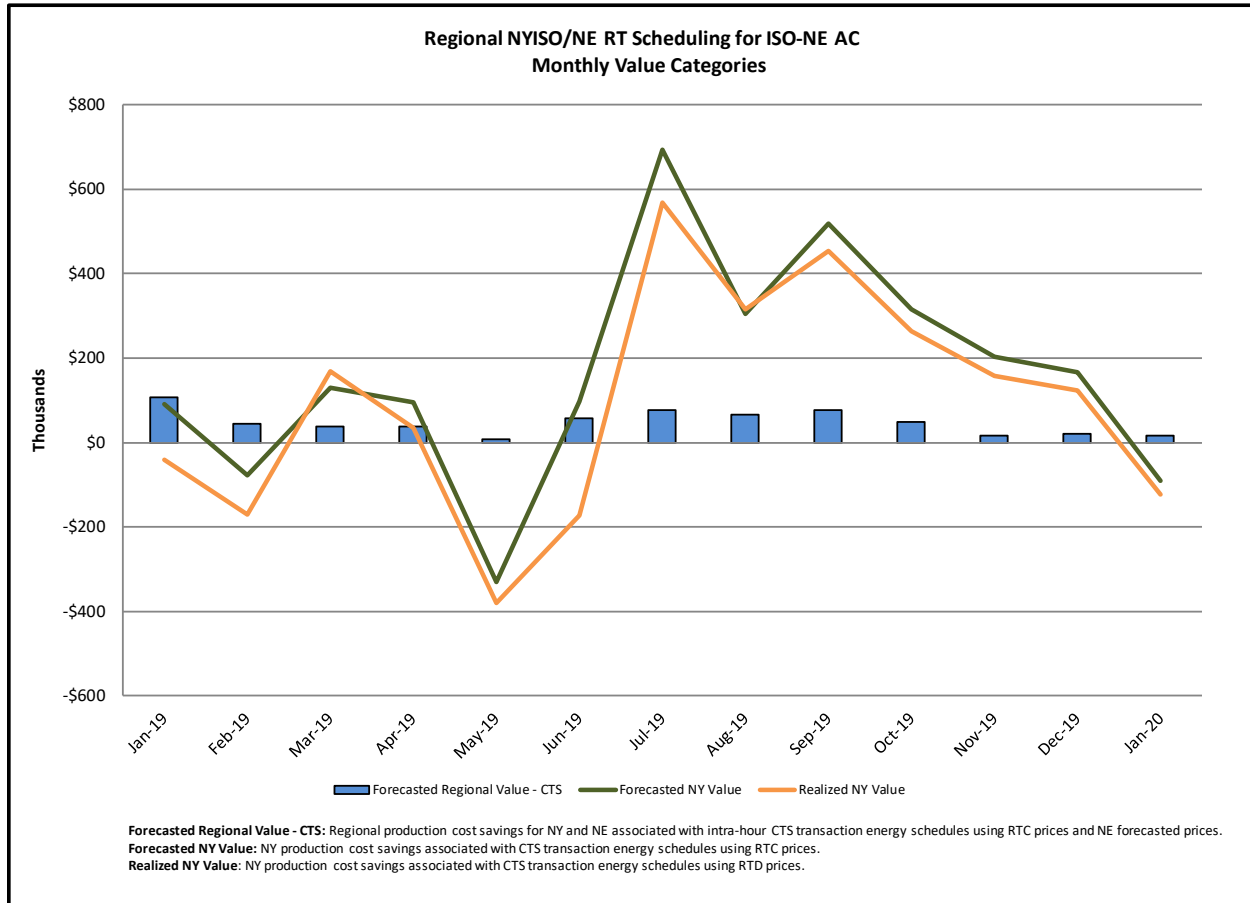
#### **Category**

NY

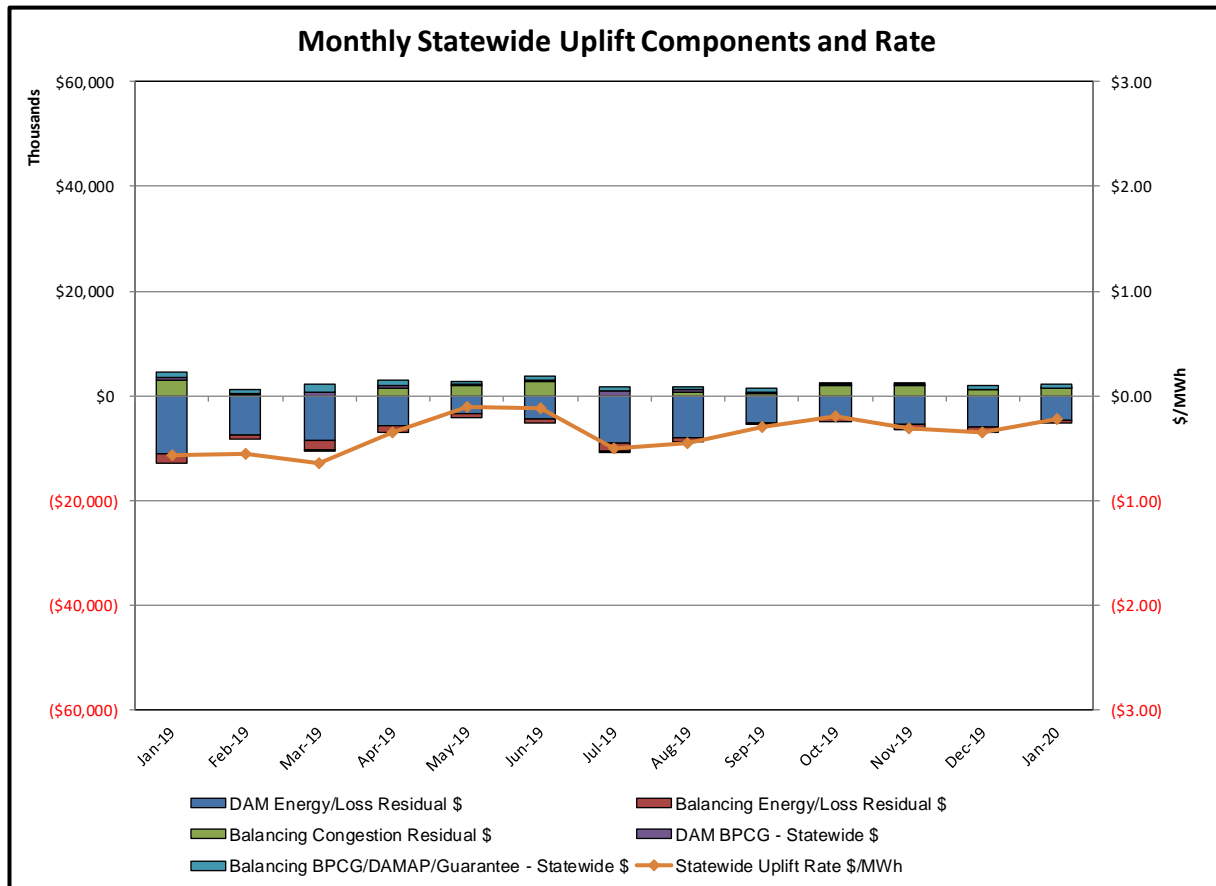
#### **Description**

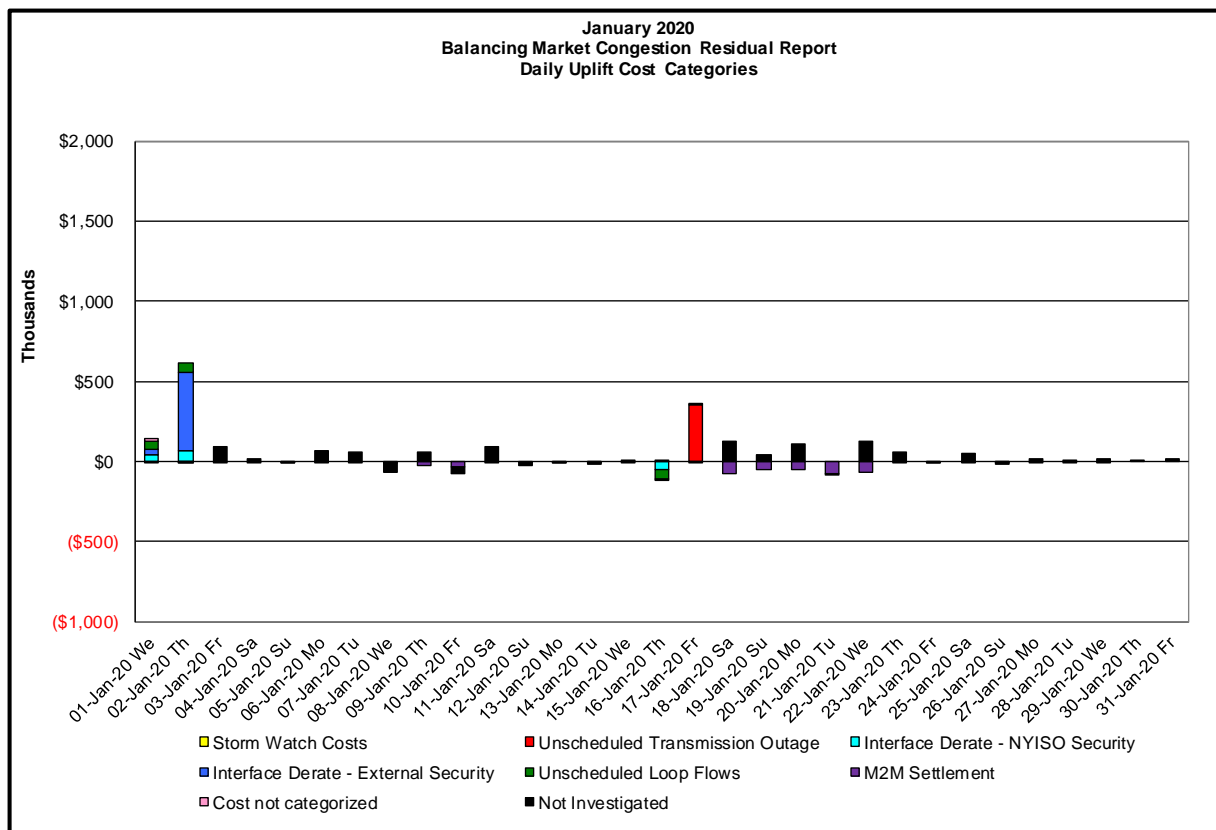
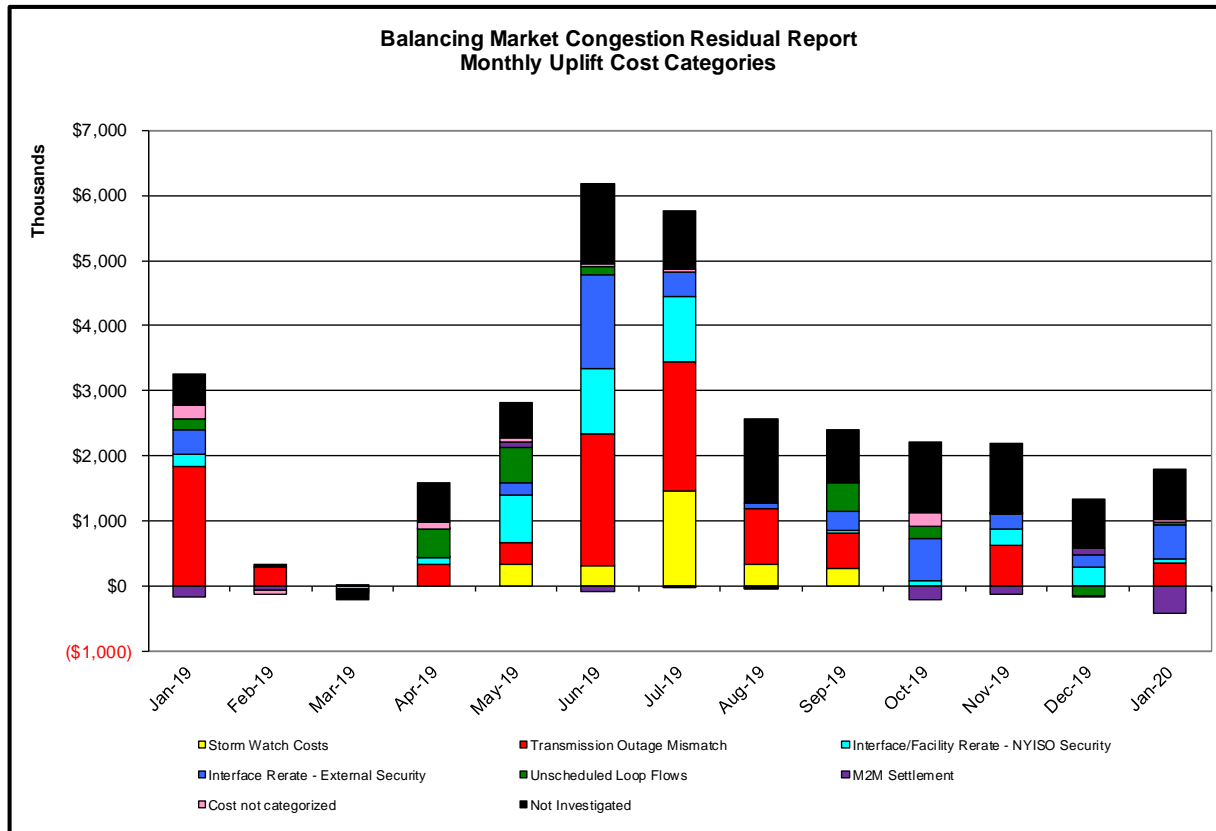
NYISO savings that result from PJM payments to NYISO when PJM's transmission use (PJM's market flow) is greater than PJM's entitlement of the NY transmission system and NYISO is incurring Western or Central NY congestion. Additionally, NYISO savings may result from the more efficient regional utilization of PJM's generation resources to directly address Western or Central NY transmission congestion.





## Market Performance Metrics







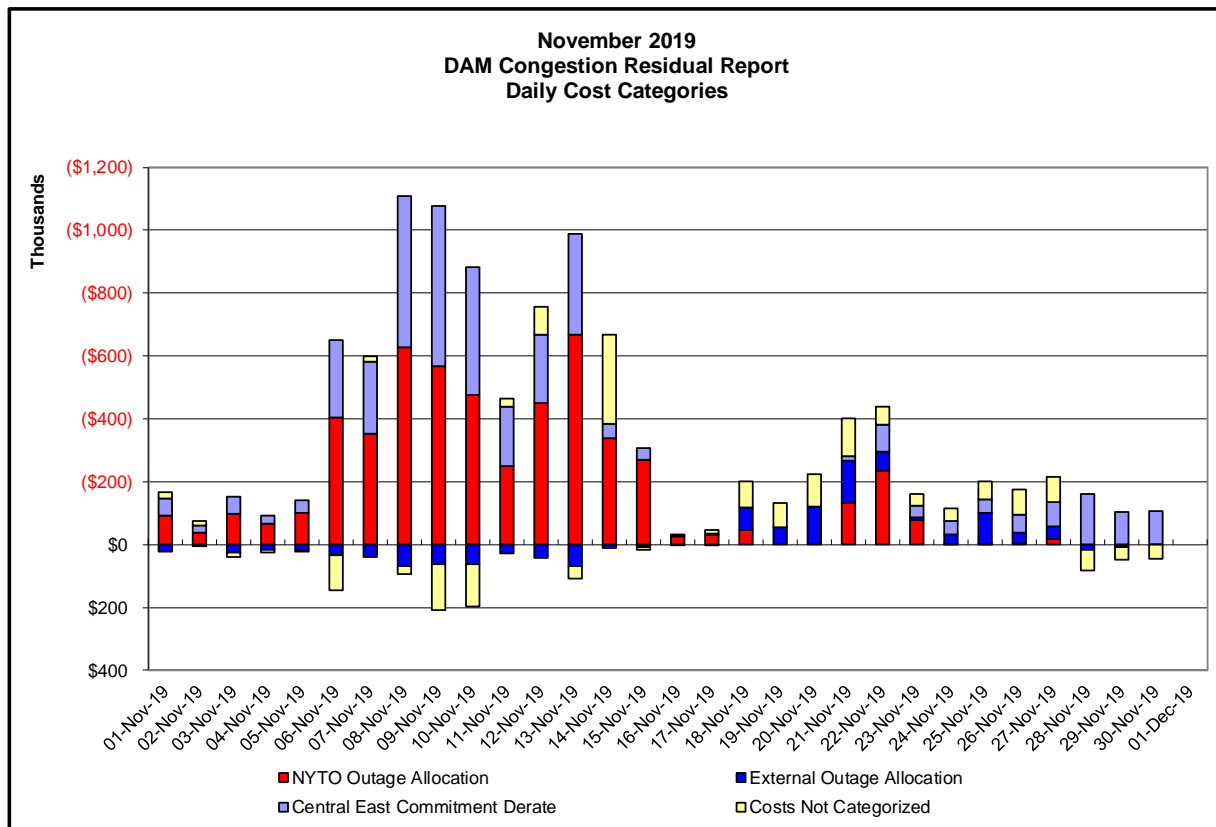
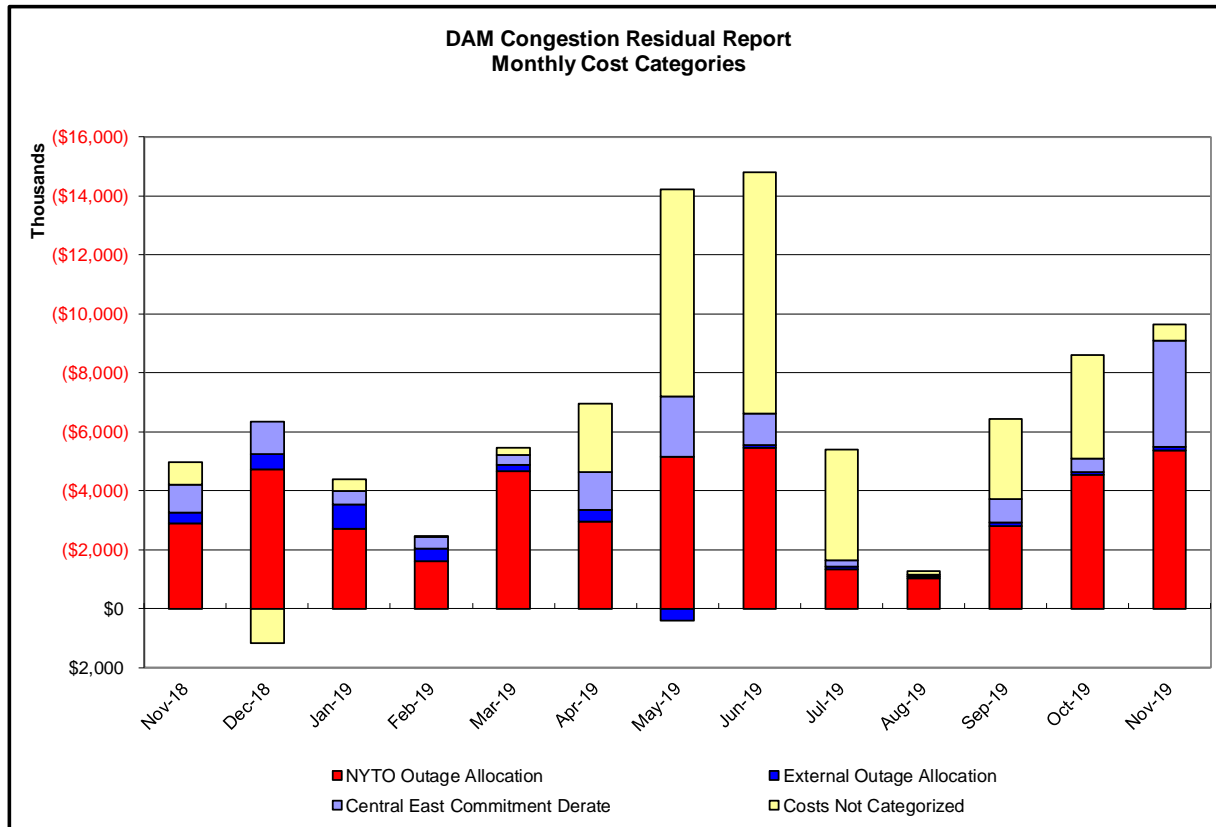
Day's investigated in January: 1, 2, 16, 17			
Event	Date (yyyymmdd)	Hours	Description
	1/1/2020	9, 17-19	Derate Central East
	1/1/2020	9	IESO_AC-NY Scheduling Limit
	1/1/2020	9, 17-19	Lake Erie Circulation, DAM-RTM exceeds +/-125MW; Central East
	1/2/2020	22	Derate Central East
	1/2/2020	14-17	Derate Niagra Packard 115kV (#181-922) for I/o TWR:PACKARD 77 & 78
	1/2/2020	9	Uprate Central East
	1/2/2020	9	NE_AC-NY Scheduling Limit
	1/2/2020	9, 12-20, 22	IESO_AC-NY Scheduling Limit
	1/2/2020	17	HQ_Chat-NY Scheduling Limit
	1/2/2020	15, 16	Lake Erie Circulation, DAM-RTM exceeds +/-125MW; Central East
	1/2/2020	14-17	Lake Erie Circulation, DAM-RTM exceeds +/-125MW; West 115kV
	1/16/2020	11	Uprate Central East
	1/16/2020	11	Lake Erie Circulation, DAM-RTM exceeds +/-125MW; Central East
	1/17/2020	13-23	Forced Outage Gowanus-Greenwood 138kV (#42231)

#### Real-Time Balancing Market Congestion Residual (Uplift Cost) Categories

<u>Category</u>	<u>Cost Assignment</u>	<u>Events Types</u>	<u>Event Examples</u>
Storm Watch	Zone J	Thunderstorm Alert (TSA)	TSA Activations
Transmission Outage Mismatch	Market-wide	Changes in DAM to RTM transfers related to transmission outage mismatch	Forced Line Outage, Unit AVR Outages Early Line Return from Outage
Interface/Facility Rerate - NYISO Security	Market-wide	Changes in DAM to RTM transfers not related to transmission outage	Interface/Facility Rerates due to RTM voltages
Interface Rerate - External Security	Market-wide	Changes in DAM to RTM transfers related to External Control Area Security Events	TLR Events, External Transaction Curtailments
Unscheduled Loop Flows	Market-wide	Changes in DAM to RTM unscheduled loop flows impacting NYISO Interface transmission constraints	DAM to RTM Lake Erie Loop Flows exceeding +/- 125 MW
M2M Settlement	Market-wide	Settlement result inclusive of coordinated redispatch and Ramapo flowgates	

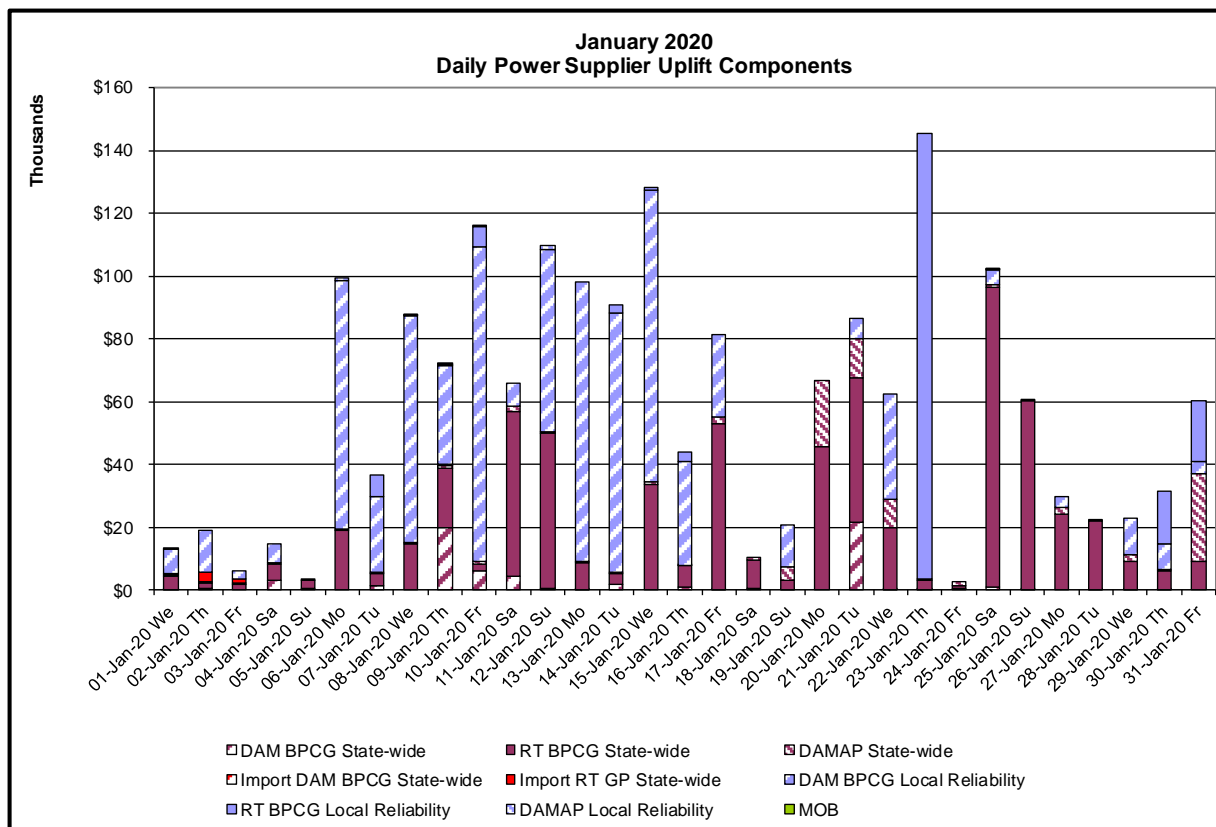
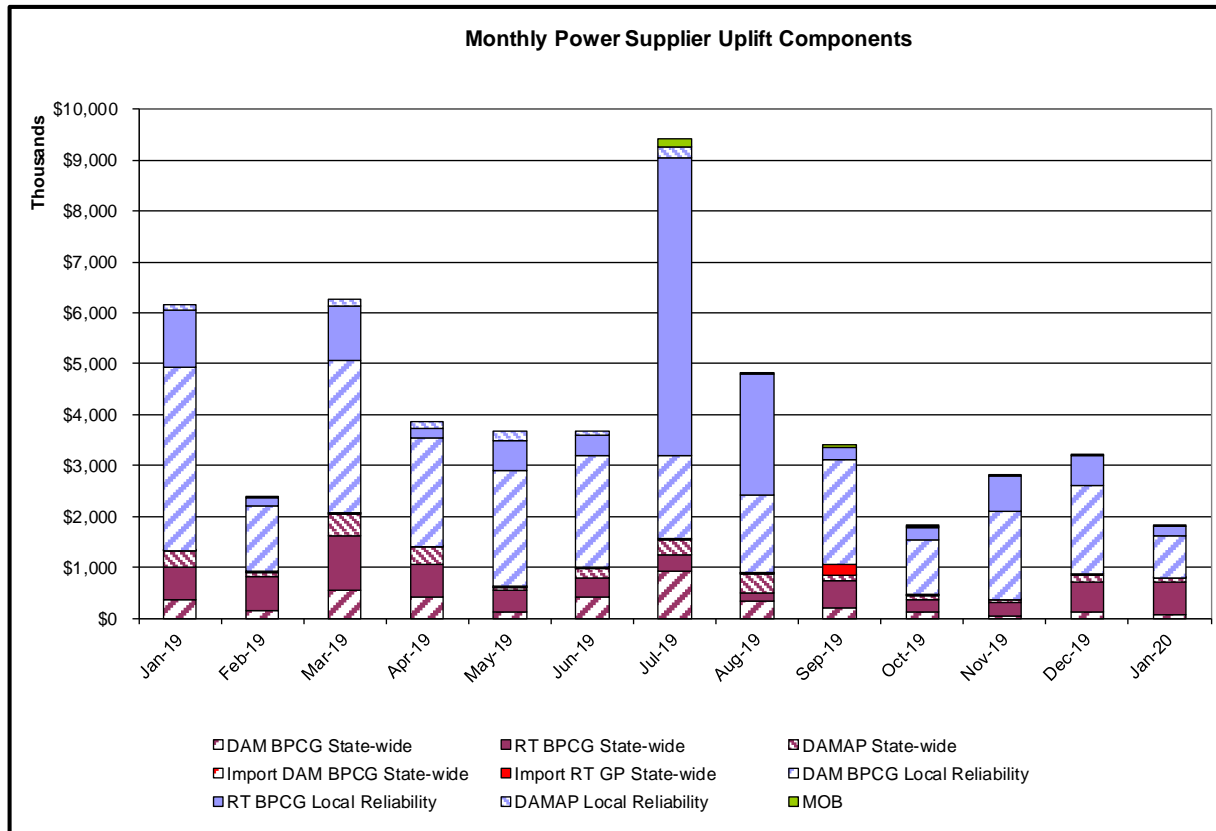
Monthly Balancing Market Congestion Report Assumptions/Notes

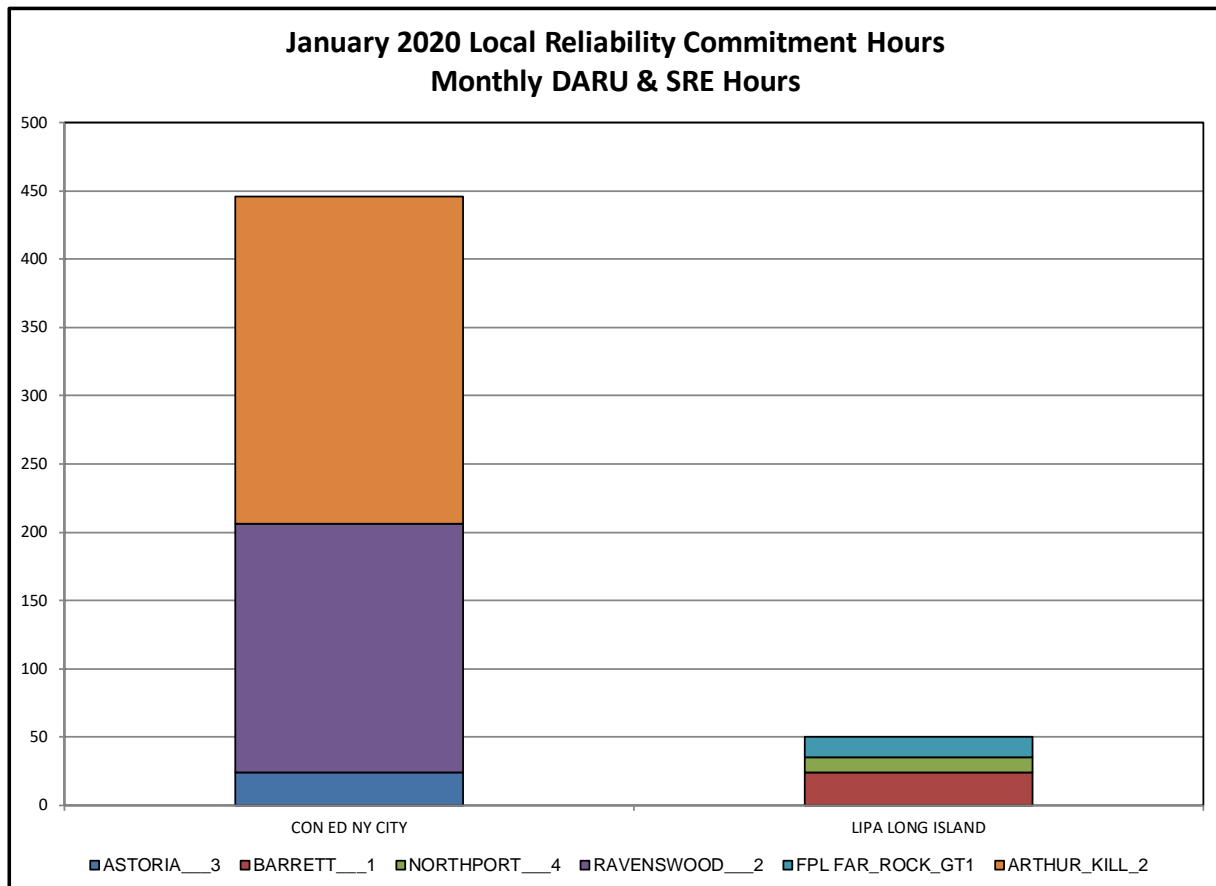
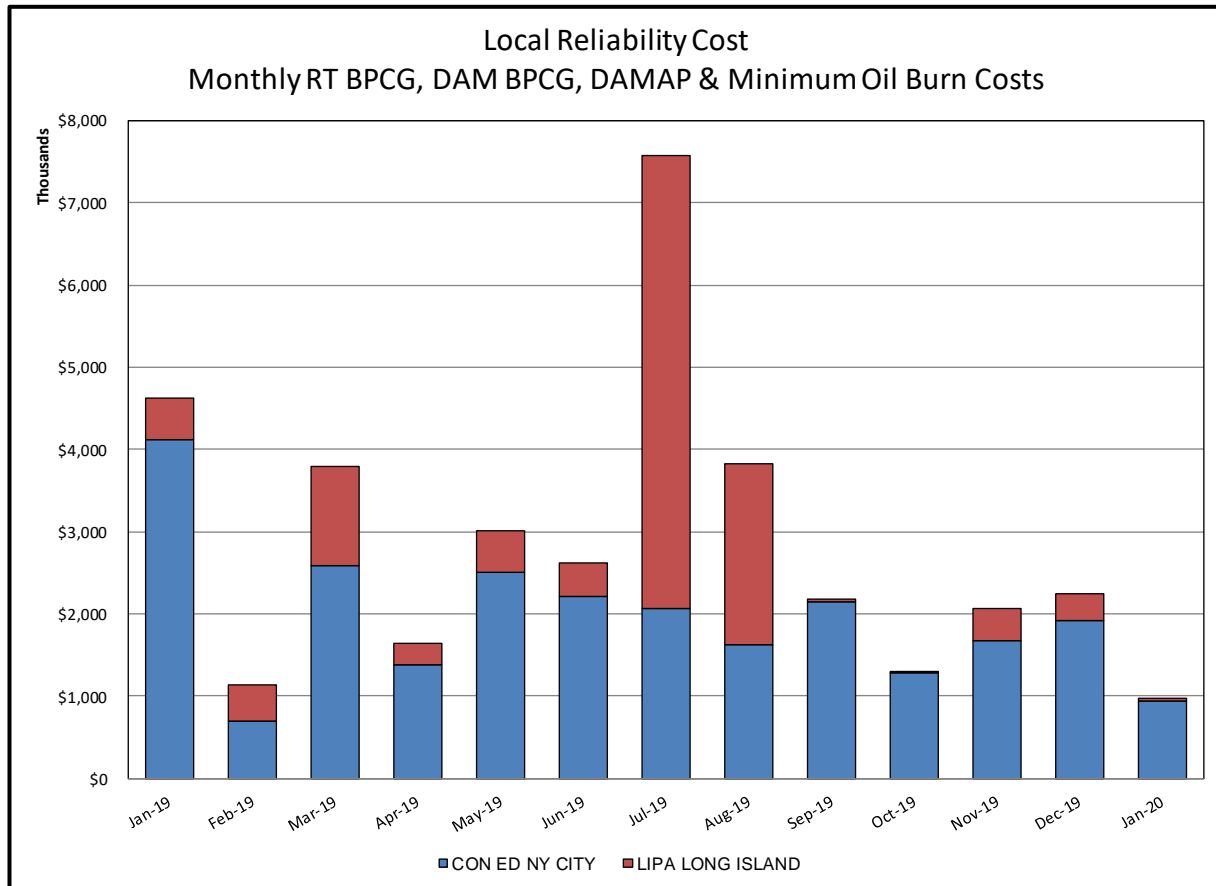
- 1) Storm Watch Costs are identified as daily total uplift costs
- 2) Days with a value of BMCR less M2M Settlement of \$100K/HR, shortfall of \$200K/Day or more, or surplus of \$100K/Day or more are investigated.
- 3) Uplift costs associated with multiple event types are apportioned equally by hour

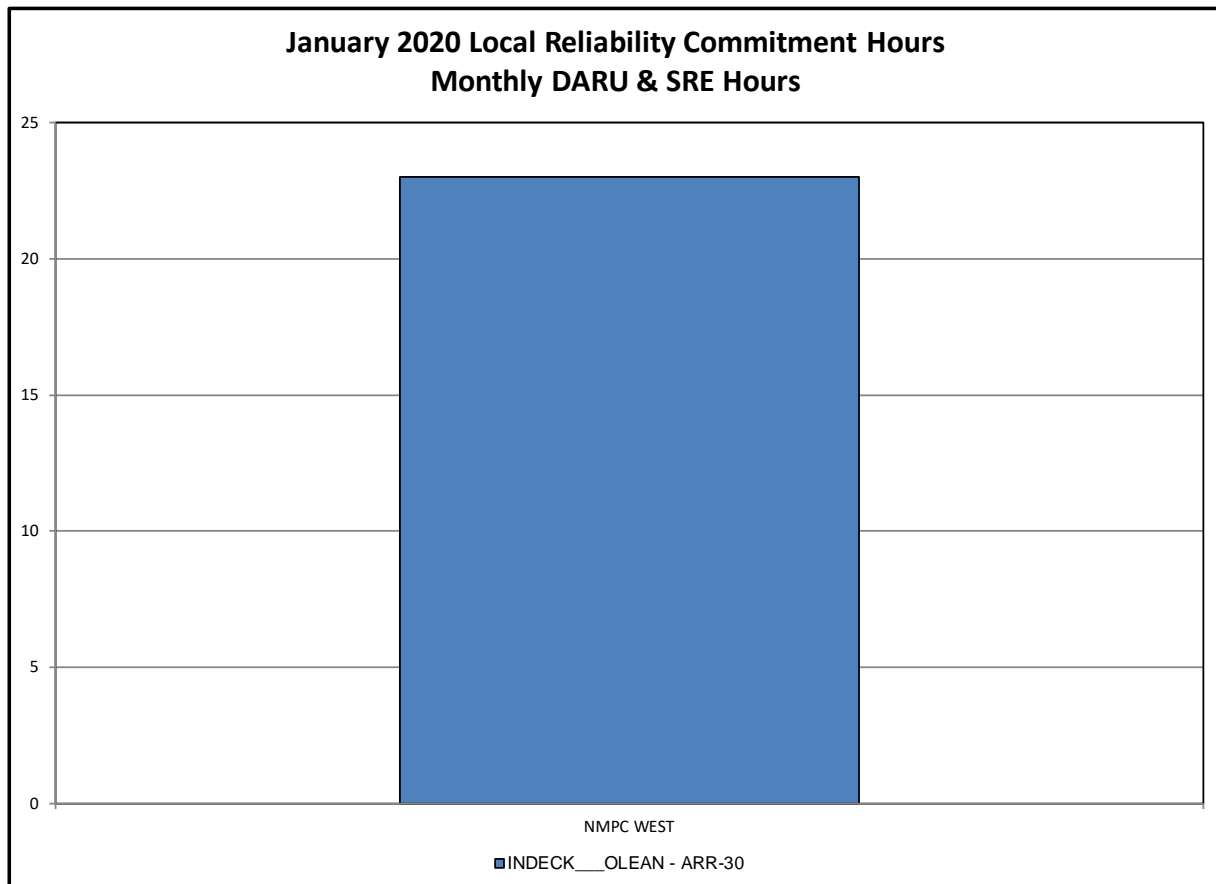
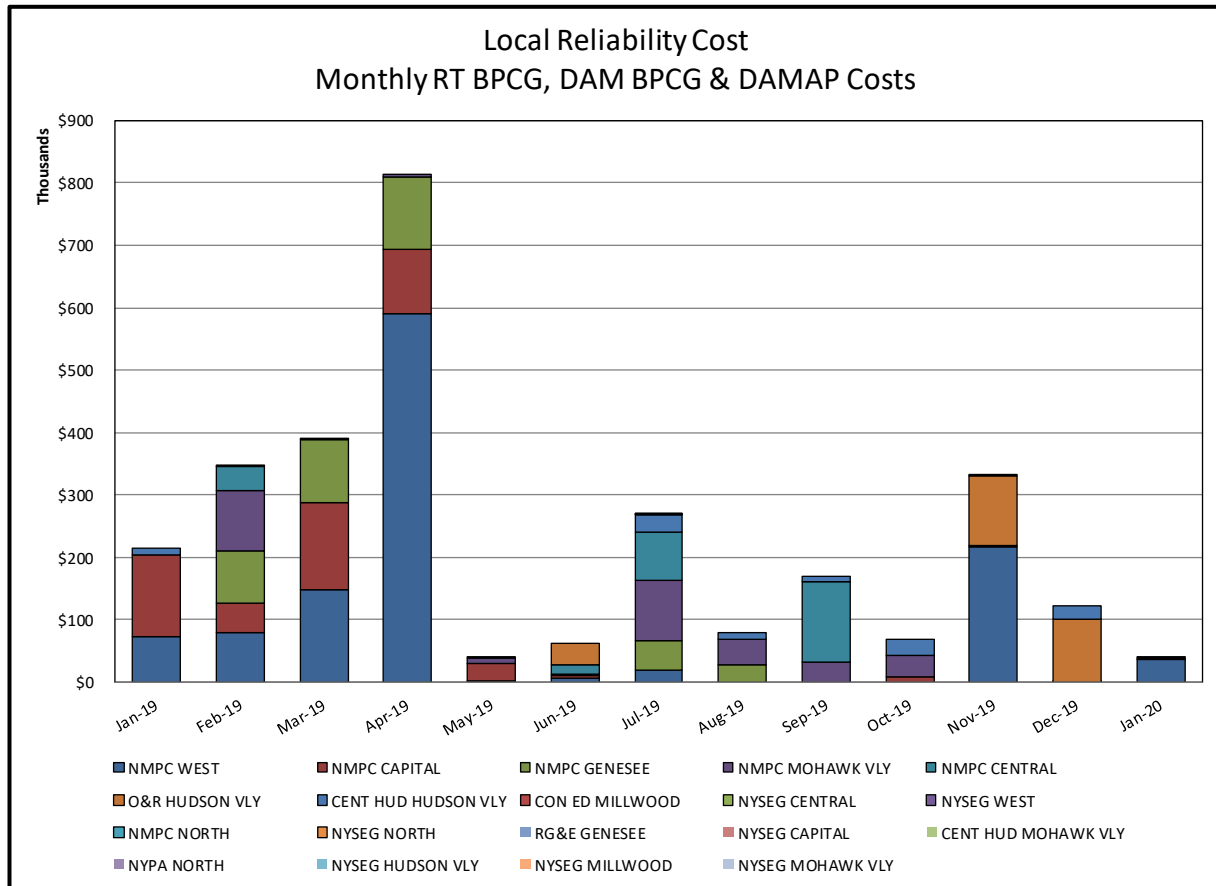


### Day-Ahead Market Congestion Residual Categories

<u>Category</u>	<u>Cost Assignment</u>	<u>Events Types</u>	<u>Event Examples</u>
NYTO Outage Allocation	Responsible TO	Direct allocation to NYTO's responsible for transmission equipment status change.	DAM scheduled outage for equipment modeled in-service for the TCC Auction.
External Outage Allocation	All TO by Monthly Allocation Factor	Direct allocation to transmission equipment status change caused by change in status of external equipment.	Tie line required out-of-service by TO of neighboring control area.
Central East Commitment Derate	All TO by Monthly Allocation Factor	Reductions in the DAM Central East_VC limit as compared to the TCC Auction limit, which are not associated with transmission line outages.	

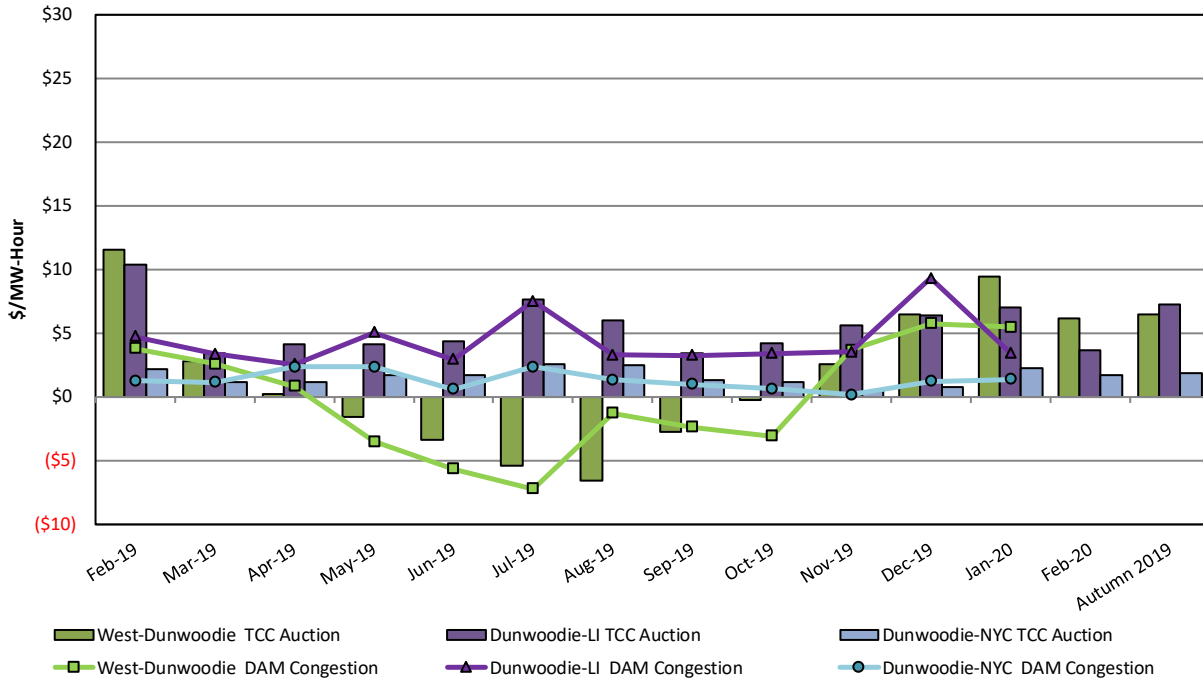






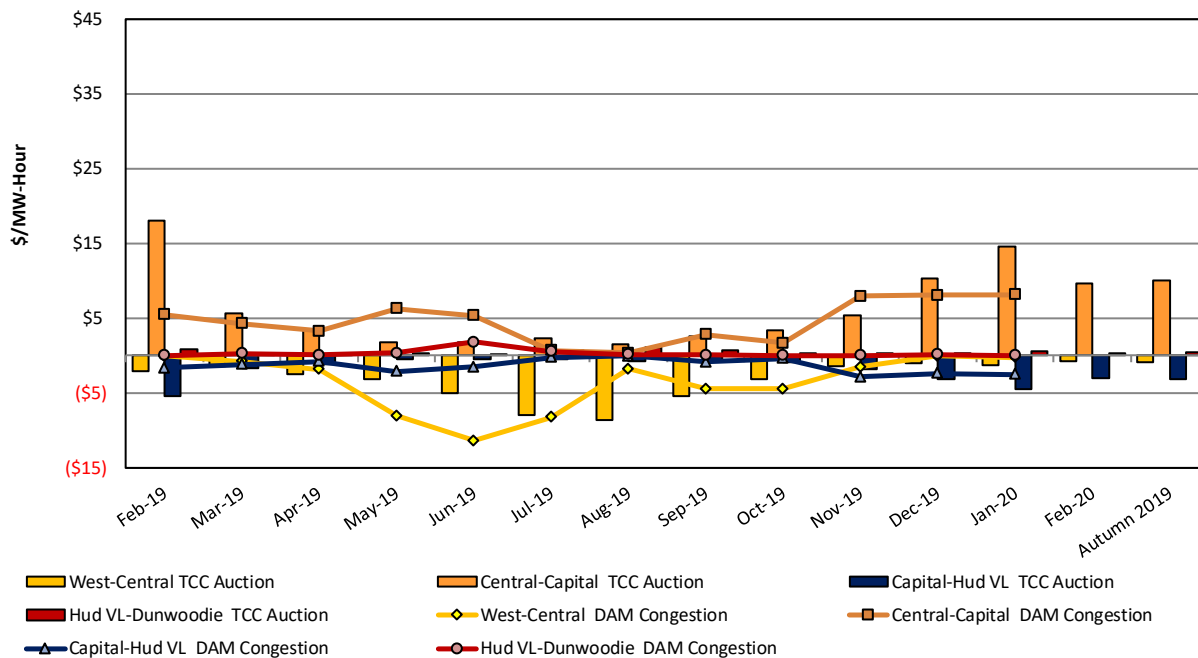
## TCC & Day Ahead Market Selected Internal Path Congestion

TCC Monthly Reconfiguration Auction vs. Monthly DAM Average  
with Autumn 2019 Centralized TCC Auction Six-Month Average



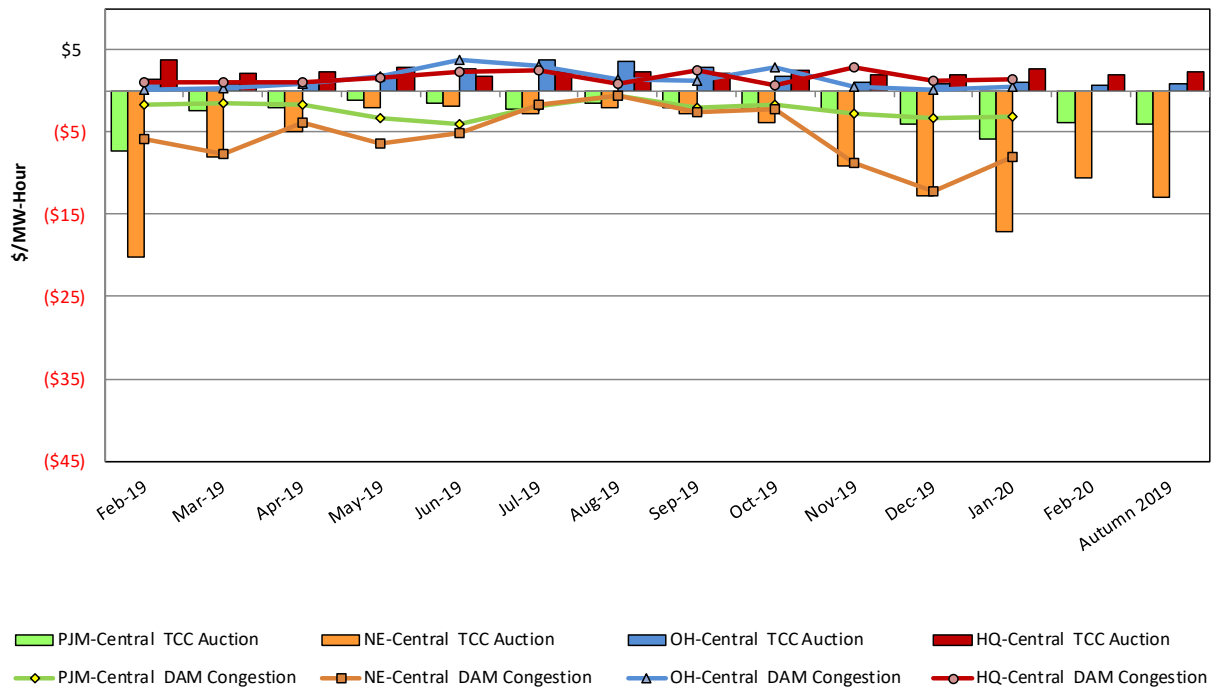
## TCC & Day Ahead Market West to Dunwoodie Path Congestion

TCC Monthly Reconfiguration Auction vs. Monthly DAM Average  
with Autumn 2019 Centralized TCC Auction Six-Month Average



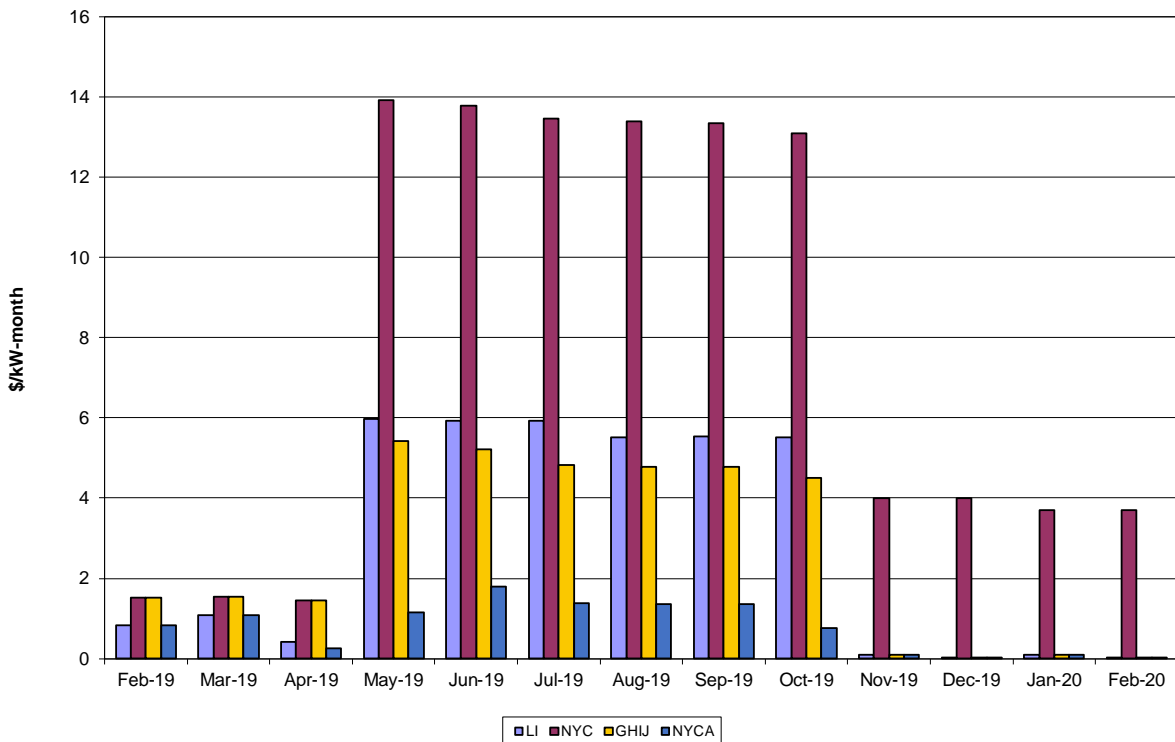
## TCC & Day Ahead Market Selected External Path Congestion

TCC Monthly Reconfiguration Auction vs. Monthly DAM Average  
with Autumn 2019 Centralized TCC Auction Six-Month Average





ICAP Spot Market Clearing Price



UCAP Sales

