

Estimated Impacts of COVID-19 on NYISO Demand

Information current as of 4/6/2020

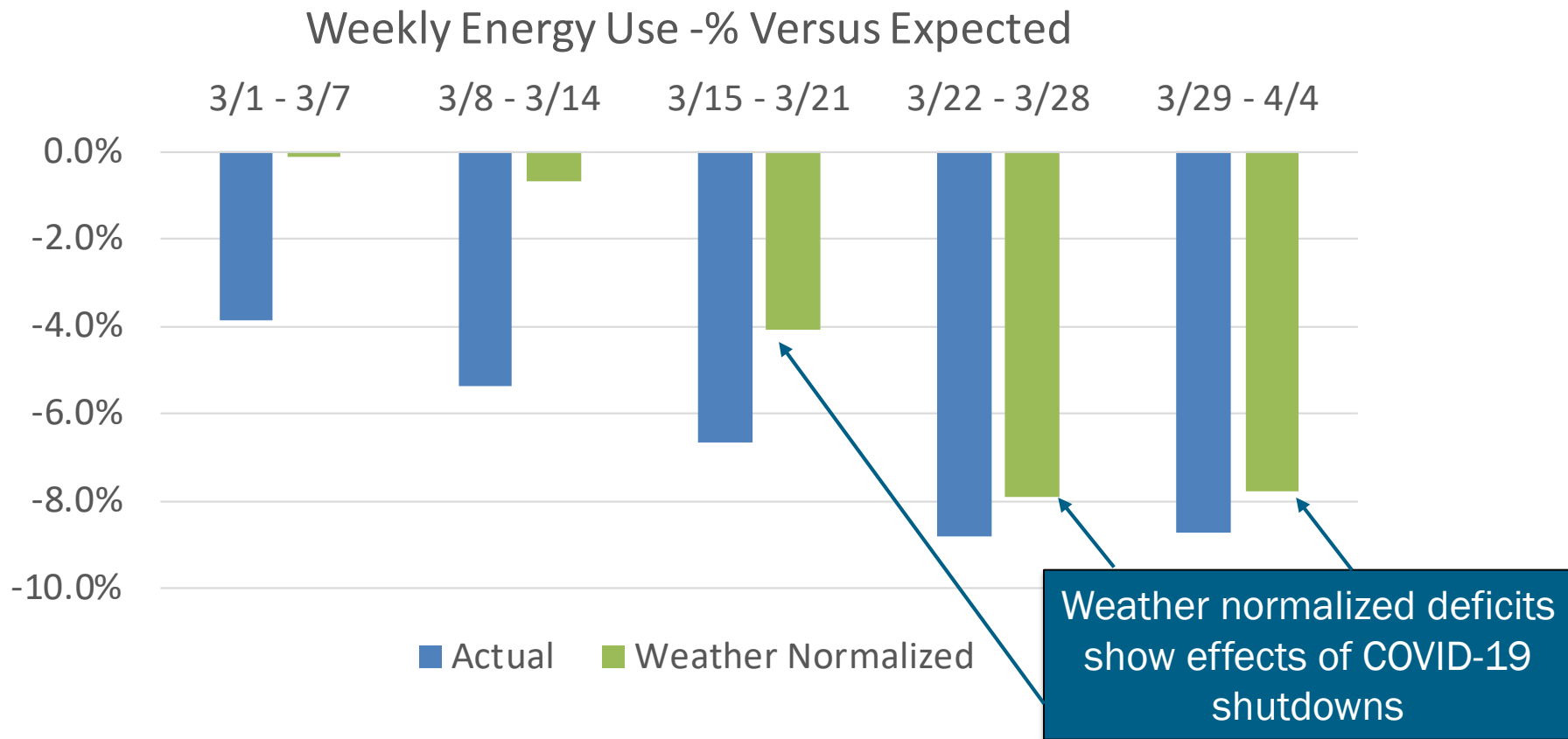
Charles Alonge

Demand Forecasting & Analysis

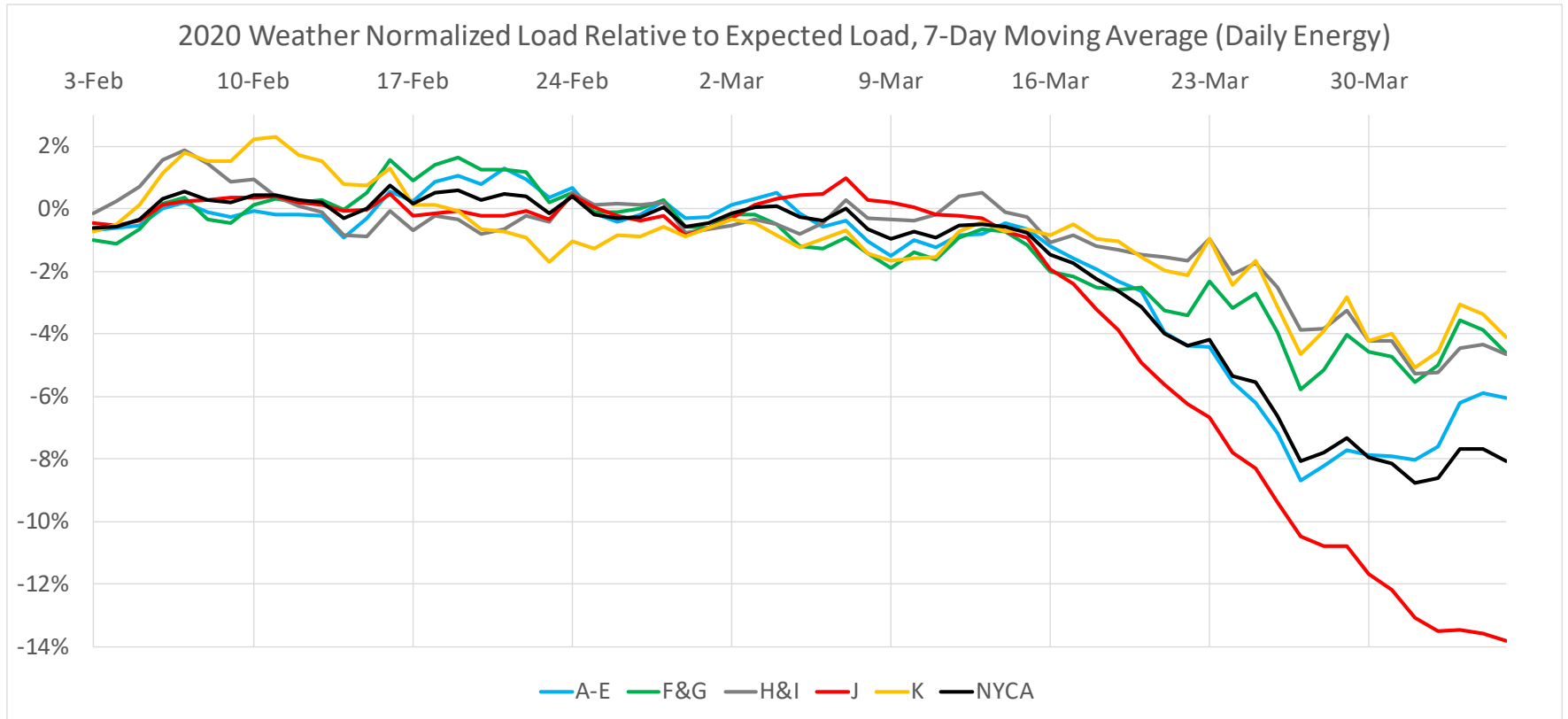
Management Committee

April 15, 2020, Teleconference

Recent Impacts on Daily Energy by Week

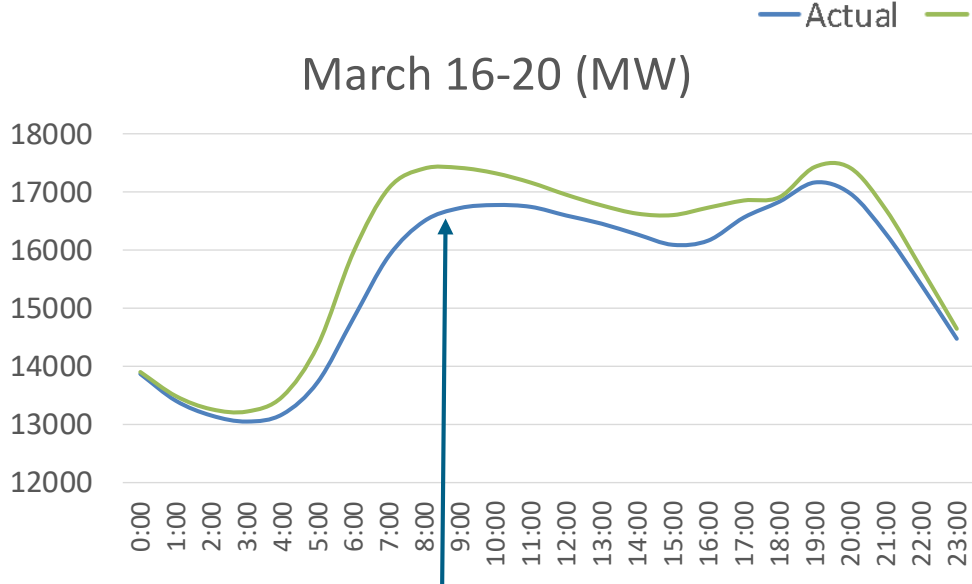


Regional Impacts on Daily Energy Patterns

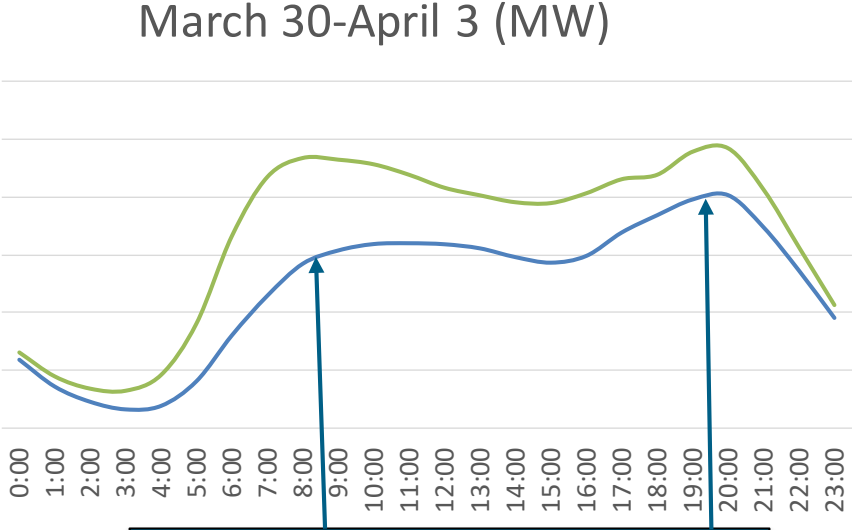


Level of decline is proportional to commercial percentage of load in region  New York ISO

Recent Impacts on Hourly Load Patterns



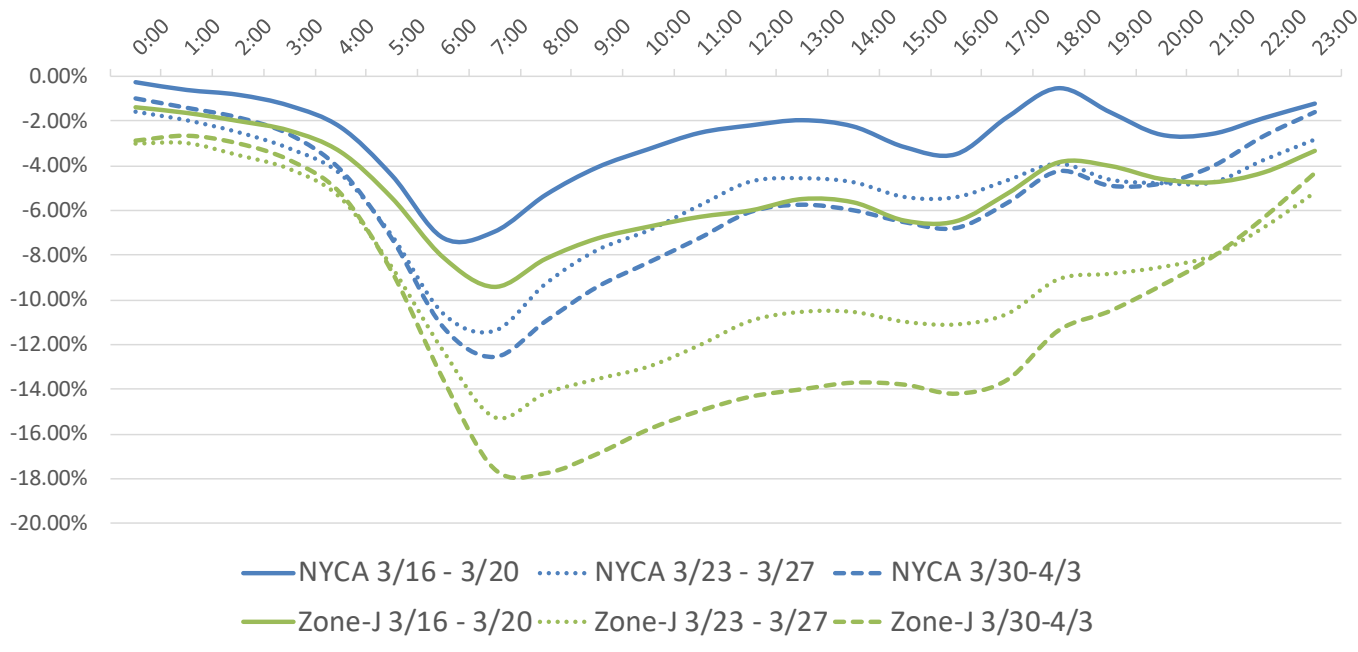
Morning peak arrives later in the day (“snow day” pattern)



Decrease in load as additional restrictions are enacted

Recent Impacts on Hourly Load Patterns

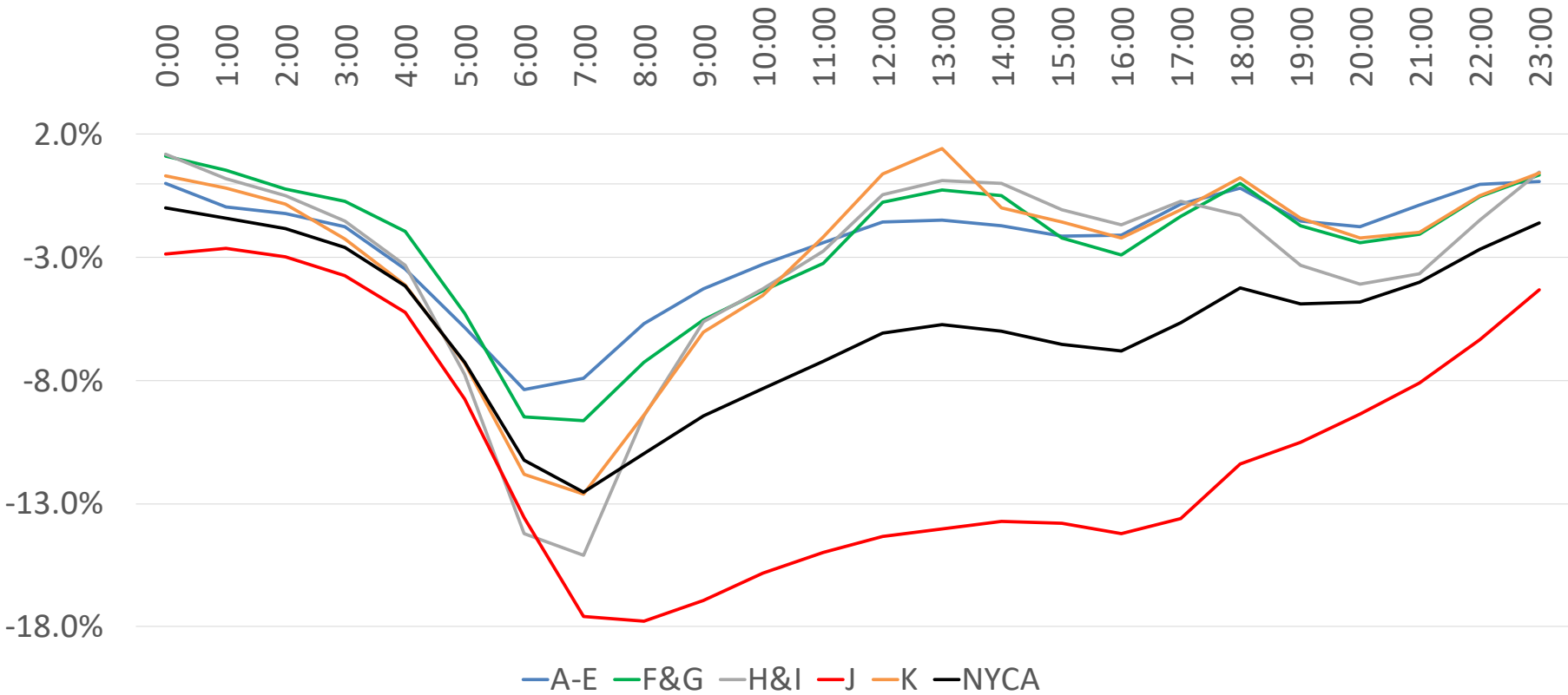
NYCA/Zone-J Load Profile - Weekday Diurnal Load Changes



- ConEd, with large commercial share of load, has significant reductions in energy relative to other load zones
- Residential energy use has increased during the mid-day (partially offsetting drop in commercial sector)

Recent Impacts on Hourly Load Patterns (Area)

Average Hourly Deficit by Area - Week of 3/30 - 4/3 (Weekdays)



Recent Impacts on Hourly Load Patterns (Area)

Average Hourly Load Deficit By Area – Week of 3/30-4/3

Hour	A-E	F-G	H-I	J	K	NYCA	Hour	A-E	F-G	H-I	J	K	NYCA
0:00	0.0%	1.1%	1.2%	-2.9%	0.3%	-1.0%	12:00	-1.5%	-0.8%	-0.5%	-14.3%	0.4%	-6.1%
1:00	-1.0%	0.5%	0.2%	-2.7%	-0.2%	-1.4%	13:00	-1.5%	-0.3%	0.1%	-14.0%	1.4%	-5.7%
2:00	-1.2%	-0.2%	-0.5%	-3.0%	-0.8%	-1.8%	14:00	-1.7%	-0.5%	0.0%	-13.7%	-1.0%	-6.0%
3:00	-1.8%	-0.7%	-1.5%	-3.7%	-2.2%	-2.6%	15:00	-2.1%	-2.2%	-1.1%	-13.8%	-1.6%	-6.5%
4:00	-3.5%	-1.9%	-3.3%	-5.2%	-4.1%	-4.2%	16:00	-2.1%	-2.9%	-1.7%	-14.2%	-2.2%	-6.8%
5:00	-5.9%	-5.3%	-7.8%	-8.8%	-7.3%	-7.3%	17:00	-0.8%	-1.3%	-0.7%	-13.6%	-1.1%	-5.7%
6:00	-8.4%	-9.5%	-14.2%	-13.6%	-11.8%	-11.2%	18:00	-0.2%	0.0%	-1.3%	-11.4%	0.2%	-4.2%
7:00	-7.9%	-9.6%	-15.1%	-17.6%	-12.6%	-12.6%	19:00	-1.5%	-1.7%	-3.3%	-10.5%	-1.4%	-4.9%
8:00	-5.7%	-7.3%	-9.5%	-17.8%	-9.4%	-11.0%	20:00	-1.8%	-2.4%	-4.1%	-9.4%	-2.2%	-4.8%
9:00	-4.3%	-5.5%	-5.6%	-16.9%	-6.0%	-9.4%	21:00	-0.9%	-2.1%	-3.7%	-8.1%	-2.0%	-4.0%
10:00	-3.3%	-4.3%	-4.3%	-15.8%	-4.5%	-8.3%	22:00	-0.1%	-0.5%	-1.5%	-6.3%	-0.5%	-2.7%
11:00	-2.4%	-3.2%	-2.8%	-15.0%	-2.2%	-7.2%	23:00	0.1%	0.3%	0.5%	-4.3%	0.4%	-1.6%

Next Steps

- **NYISO Operations and Demand Forecasting Team continue to monitor and assess the impacts of the COVID-19 shutdowns**
 - Identify the inflection point in daily energy declines
 - Track best available economic forecasts and consult with Transmission Owners on sector impacts
- **Gold Book Forecast Updates**
 - Baseline Forecast
 - Adding Economic Considerations to Low Energy Scenario
- **Forecasting system updates for Day-Ahead and Real Time Commitment**

Questions?

Our mission, in collaboration with our stakeholders, is to serve the public interest and provide benefit to consumers by:

- Maintaining and enhancing regional reliability
- Operating open, fair and competitive wholesale electricity markets
- Planning the power system for the future
- Providing factual information to policymakers, stakeholders and investors in the power system

