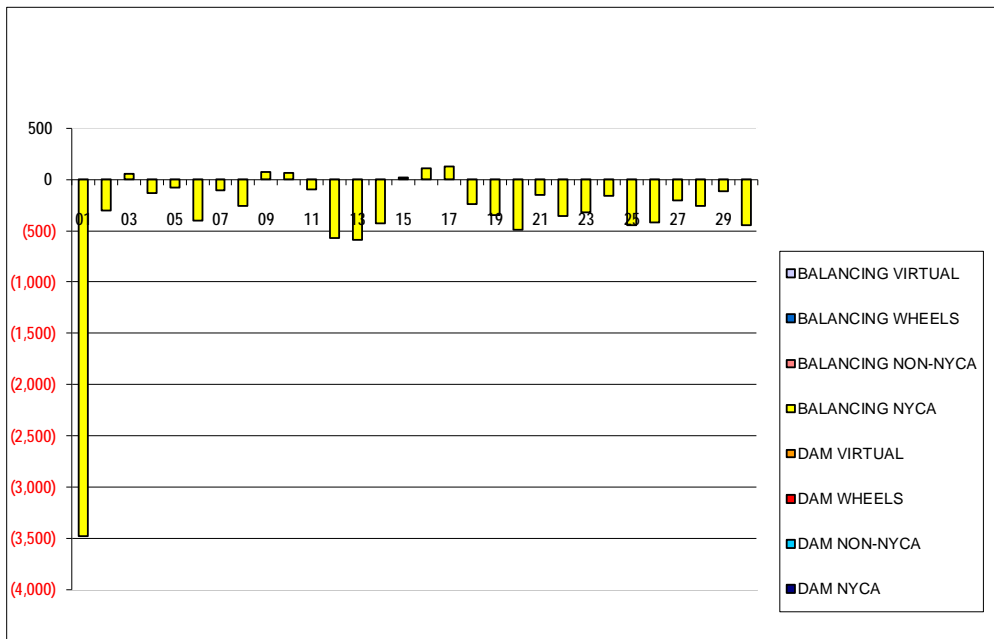


SETTLEMENTS REPORT
November 2019 Settlement Adjustment
April 7, 2020

Settlement Adjustment – Market Supply Delta Analysis

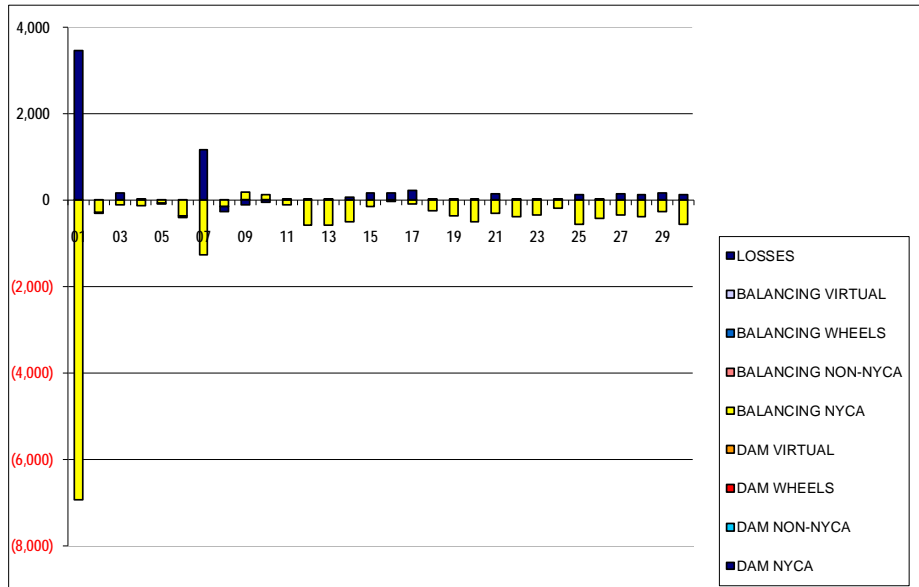
	MONDAY	TUESDAY	WEDNESDAY	THURSDAY	FRIDAY	SATURDAY	SUNDAY
					1	2	3
DAM NYCA					0	0	0
DAM NON-NYCA					0	0	0
DAM WHEELS					0	0	0
DAM VIRTUAL					0	0	0
BALANCING NYCA					(3,480)	(302)	55
BALANCING NON-NYCA					0	0	0
BALANCING WHEELS					0	0	0
BALANCING VIRTUAL					0	0	0
	4	5	6	7	8	9	10
DAM NYCA	0	0	0	0	0	0	0
DAM NON-NYCA	0	0	0	0	0	0	0
DAM WHEELS	0	0	0	0	0	0	0
DAM VIRTUAL	0	0	0	0	0	0	0
BALANCING NYCA	(135)	(81)	(402)	(104)	(260)	70	64
BALANCING NON-NYCA	0	0	0	0	0	0	0
BALANCING WHEELS	0	0	0	0	0	0	0
BALANCING VIRTUAL	0	0	0	0	0	0	0
	11	12	13	14	15	16	17
DAM NYCA	0	0	0	0	0	0	0
DAM NON-NYCA	0	0	0	0	0	0	0
DAM WHEELS	0	0	0	0	0	0	0
DAM VIRTUAL	0	0	0	0	0	0	0
BALANCING NYCA	(101)	(573)	(585)	(431)	18	113	126
BALANCING NON-NYCA	0	0	0	0	0	0	0
BALANCING WHEELS	0	0	0	0	0	0	0
BALANCING VIRTUAL	0	0	0	0	0	0	0
	18	19	20	21	22	23	24
DAM NYCA	0	0	0	0	0	0	0
DAM NON-NYCA	0	0	0	0	0	0	0
DAM WHEELS	0	0	0	0	0	0	0
DAM VIRTUAL	0	0	0	0	0	0	0
BALANCING NYCA	(240)	(345)	(490)	(153)	(354)	(324)	(159)
BALANCING NON-NYCA	0	0	0	0	0	0	0
BALANCING WHEELS	0	0	0	0	0	0	0
BALANCING VIRTUAL	0	0	0	0	0	0	0
	25	26	27	28	29	30	
DAM NYCA	0	0	0	0	0	0	
DAM NON-NYCA	0	0	0	0	0	0	
DAM WHEELS	0	0	0	0	0	0	
DAM VIRTUAL	0	0	0	0	0	0	
BALANCING NYCA	(447)	(415)	(207)	(257)	(116)	(442)	
BALANCING NON-NYCA	0	0	0	0	0	0	
BALANCING WHEELS	0	0	0	0	0	0	
BALANCING VIRTUAL	0	0	0	0	0	0	



SETTLEMENTS REPORT
November 2019 Settlement Adjustment
April 7, 2020

Settlement Adjustment – Market Withdrawals Delta Analysis

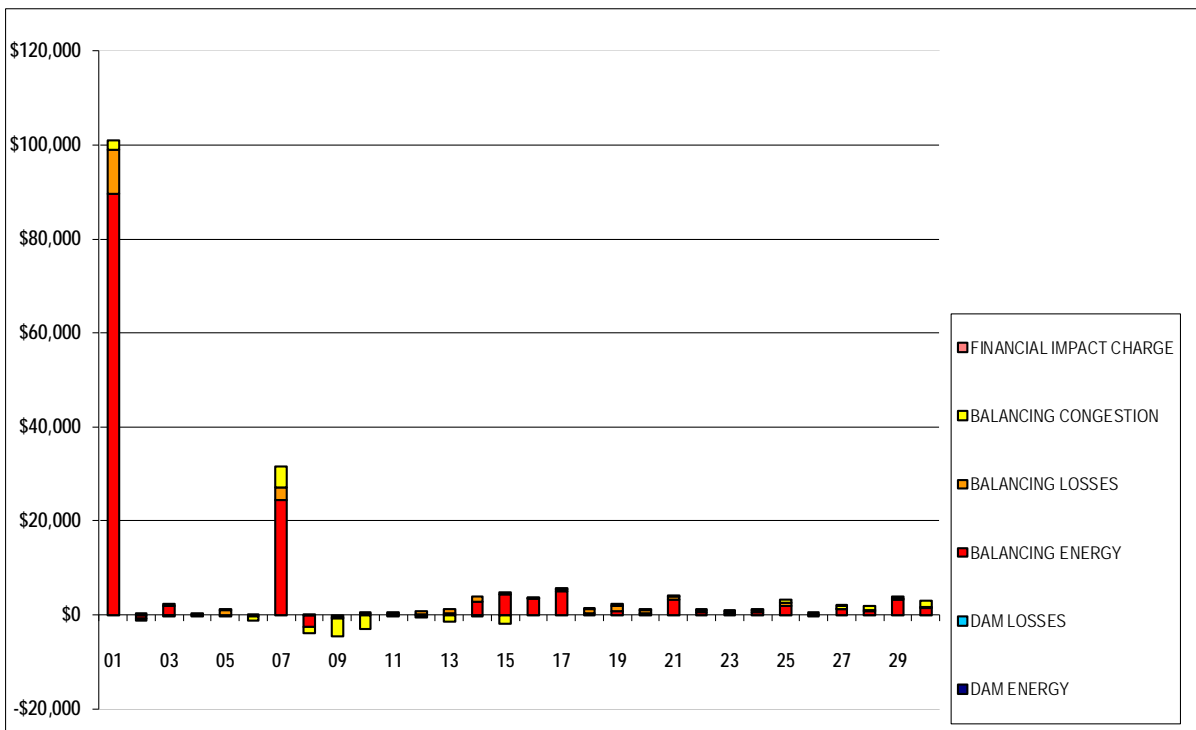
	MONDAY	TUESDAY	WEDNESDAY	THURSDAY	FRIDAY	SATURDAY	SUNDAY
					1	2	3
DAM NYCA					0	0	0
DAM NON-NYCA					0	0	0
DAM WHEELS					0	0	0
DAM VIRTUAL					0	0	0
BALANCING NYCA					(6,946)	(292)	(108)
BALANCING NON-NYCA					0	0	0
BALANCING WHEELS					0	0	0
BALANCING VIRTUAL					0	0	0
UFE/LOSSES					3,466	(9)	163
	4	5	6	7	8	9	10
DAM NYCA	0	0	0	0	0	0	0
DAM NON-NYCA	0	0	0	0	0	0	0
DAM WHEELS	0	0	0	0	0	0	0
DAM VIRTUAL	0	0	0	0	0	0	0
BALANCING NYCA	(138)	(79)	(367)	(1,268)	(149)	185	120
BALANCING NON-NYCA	0	0	0	0	0	0	0
BALANCING WHEELS	0	0	0	0	0	0	0
BALANCING VIRTUAL	0	0	0	0	0	0	0
UFE/LOSSES	3	(2)	(34)	1,165	(111)	(115)	(57)
	11	12	13	14	15	16	17
DAM NYCA	0	0	0	0	0	0	0
DAM NON-NYCA	0	0	0	0	0	0	0
DAM WHEELS	0	0	0	0	0	0	0
DAM VIRTUAL	0	0	0	0	0	0	0
BALANCING NYCA	(108)	(579)	(591)	(497)	(148)	(41)	(94)
BALANCING NON-NYCA	0	0	0	0	0	0	0
BALANCING WHEELS	0	0	0	0	0	0	0
BALANCING VIRTUAL	0	0	0	0	0	0	0
UFE/LOSSES	7	7	6	66	165	154	220
	18	19	20	21	22	23	24
DAM NYCA	0	0	0	0	0	0	0
DAM NON-NYCA	0	0	0	0	0	0	0
DAM WHEELS	0	0	0	0	0	0	0
DAM VIRTUAL	0	0	0	0	0	0	0
BALANCING NYCA	(252)	(375)	(507)	(301)	(388)	(344)	(184)
BALANCING NON-NYCA	0	0	0	0	0	0	0
BALANCING WHEELS	0	0	0	0	0	0	0
BALANCING VIRTUAL	0	0	0	0	0	0	0
UFE/LOSSES	12	30	17	148	33	20	25
	25	26	27	28	29	30	
DAM NYCA	0	0	0	0	0	0	
DAM NON-NYCA	0	0	0	0	0	0	
DAM WHEELS	0	0	0	0	0	0	
DAM VIRTUAL	0	0	0	0	0	0	
BALANCING NYCA	(573)	(426)	(342)	(382)	(271)	(565)	
BALANCING NON-NYCA	0	0	0	0	0	0	
BALANCING WHEELS	0	0	0	0	0	0	
BALANCING VIRTUAL	0	0	0	0	0	0	
UFE/LOSSES	125	11	135	125	154	122	



SETTLEMENTS REPORT
November 2019 Settlement Adjustment
April 7, 2020

Settlement Adjustment – Market Residuals Delta Analysis

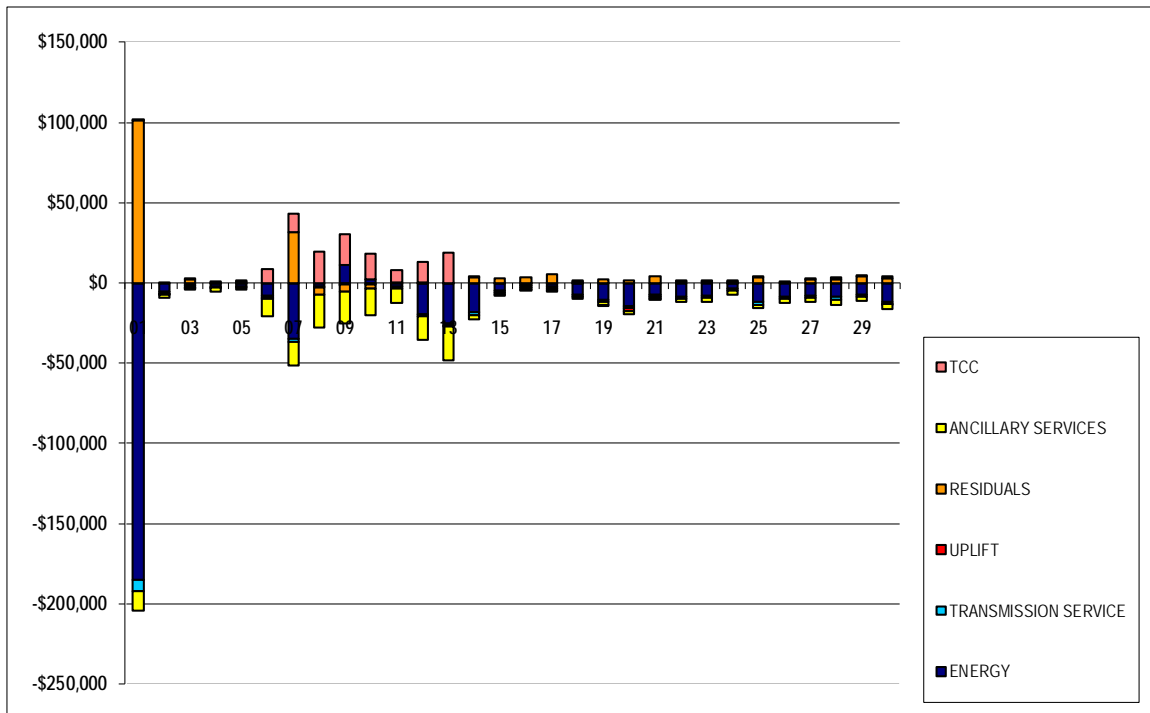
	MONDAY	TUESDAY	WEDNESDAY	THURSDAY	FRIDAY	SATURDAY	SUNDAY
					1	2	3
DAM ENERGY					\$0.00	\$0.00	\$0.00
DAM LOSSES					\$0.00	\$0.00	(\$0.01)
BALANCING ENERGY					\$89,634.36	(\$742.49)	\$1,984.81
BALANCING LOSSES					\$9,265.87	\$285.94	(\$215.03)
BALANCING CONGESTION					\$2,180.22	(\$455.29)	\$467.06
FINANCIAL IMPACT CHARGE					\$0.00	\$0.00	\$0.00
	4	5	6	7	8	9	10
DAM ENERGY	\$0.01	\$0.00	\$0.00	\$0.00	\$0.00	\$0.00	\$0.00
DAM LOSSES	\$0.00	\$0.00	\$0.00	(\$0.01)	\$0.00	(\$0.01)	\$0.00
BALANCING ENERGY	\$119.76	(\$31.37)	(\$344.00)	\$24,468.36	(\$2,610.40)	(\$650.42)	\$384.77
BALANCING LOSSES	\$122.99	\$973.81	\$142.48	\$2,623.90	\$12.49	(\$52.20)	\$29.65
BALANCING CONGESTION	(\$299.87)	\$52.99	(\$777.49)	\$4,431.73	(\$1,335.99)	(\$3,764.88)	(\$3,008.57)
FINANCIAL IMPACT CHARGE	\$0.00	\$0.00	\$0.00	\$0.00	\$0.00	\$0.00	\$0.00
	11	12	13	14	15	16	17
DAM ENERGY	\$0.00	\$0.00	\$0.00	(\$0.01)	\$0.00	(\$0.01)	\$0.00
DAM LOSSES	\$0.00	\$0.00	\$0.01	\$0.00	\$0.00	\$0.00	\$0.00
BALANCING ENERGY	\$250.84	\$186.67	\$366.36	\$2,785.40	\$4,305.95	\$3,364.90	\$5,017.84
BALANCING LOSSES	\$25.55	\$631.93	\$760.54	\$1,178.22	\$423.68	\$98.00	\$350.64
BALANCING CONGESTION	(\$48.21)	(\$626.17)	(\$1,556.16)	(\$317.64)	(\$1,837.50)	\$45.88	\$81.81
FINANCIAL IMPACT CHARGE	\$0.00	\$0.00	\$0.00	\$0.00	\$0.00	\$0.00	\$0.00
	18	19	20	21	22	23	24
DAM ENERGY	\$0.00	\$0.00	(\$0.01)	\$0.00	\$0.00	\$0.00	\$0.00
DAM LOSSES	\$0.00	\$0.00	\$0.00	(\$0.01)	(\$0.01)	\$0.00	\$0.00
BALANCING ENERGY	\$257.33	\$792.18	\$398.08	\$3,193.86	\$566.78	\$359.08	\$567.88
BALANCING LOSSES	\$922.19	\$1,059.64	\$636.02	\$792.12	\$346.27	\$473.38	\$337.92
BALANCING CONGESTION	\$6.13	\$500.02	\$287.18	\$47.46	\$38.33	\$258.37	\$112.02
FINANCIAL IMPACT CHARGE	\$0.00	\$0.00	\$0.01	\$0.00	\$0.00	\$0.00	\$0.00
	25	26	27	28	29	30	
DAM ENERGY	(\$0.01)	\$0.00	(\$0.01)	\$0.00	\$0.00	\$0.00	
DAM LOSSES	\$0.00	(\$0.01)	\$0.00	\$0.01	(\$0.01)	\$0.01	
BALANCING ENERGY	\$1,936.11	\$194.78	\$1,159.58	\$810.14	\$3,214.55	\$1,528.60	
BALANCING LOSSES	\$607.76	\$306.26	\$178.00	\$118.08	\$324.64	\$163.10	
BALANCING CONGESTION	\$704.34	(\$94.10)	\$639.82	\$1,021.77	\$347.44	\$1,365.54	
FINANCIAL IMPACT CHARGE	\$0.00	\$0.00	\$0.08	\$0.00	\$0.00	\$0.00	



SETTLEMENTS REPORT
November 2019 Settlement Adjustment
April 7, 2020

Settlement Adjustment – Market Costs Delta Analysis

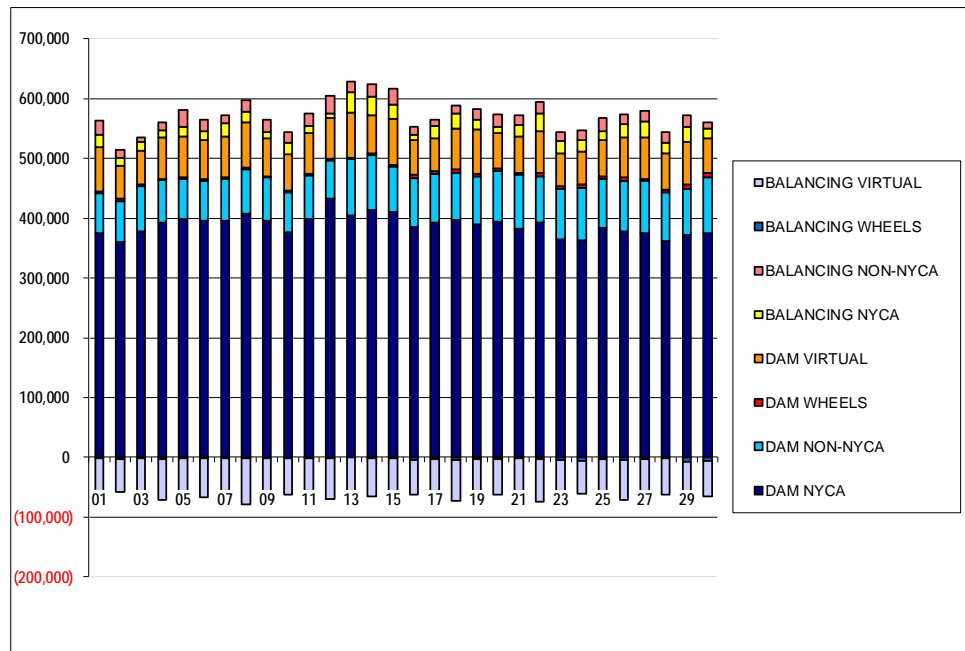
	MONDAY	TUESDAY	WEDNESDAY	THURSDAY	FRIDAY	SATURDAY	SUNDAY
					1	2	3
ENERGY					(\$184,736.97)	(\$5,421.36)	(\$1,643.78)
TRANSMISSION SERVICE					(\$7,545.09)	(\$1,194.63)	(\$930.05)
UPLIFT					\$0.00	(\$8.87)	(\$0.22)
RESIDUALS					\$101,080.45	(\$911.84)	\$2,236.83
ANCILLARY SERVICES					(\$11,808.36)	(\$1,964.72)	(\$1,696.17)
TCC					\$668.19	\$239.28	\$592.92
	4	5	6	7	8	9	10
ENERGY	(\$2,151.15)	(\$1,922.50)	(\$7,745.99)	(\$34,574.43)	(\$2,067.31)	\$11,028.39	\$2,120.16
TRANSMISSION SERVICE	(\$843.17)	(\$805.66)	(\$1,289.80)	(\$2,111.98)	(\$1,004.83)	(\$700.90)	(\$795.78)
UPLIFT	\$0.64	\$0.47	\$0.01	\$0.00	\$0.00	(\$0.33)	(\$0.07)
RESIDUALS	(\$57.11)	\$995.43	(\$979.01)	\$31,523.98	(\$3,933.90)	(\$4,467.51)	(\$2,594.15)
ANCILLARY SERVICES	(\$2,064.48)	(\$1,402.22)	(\$10,496.33)	(\$14,515.70)	(\$20,753.34)	(\$20,357.80)	(\$16,748.52)
TCC	\$1,029.81	\$423.12	\$8,832.75	\$11,608.23	\$19,444.68	\$19,542.09	\$15,810.24
	11	12	13	14	15	16	17
ENERGY	(\$2,399.32)	(\$19,189.02)	(\$25,323.07)	(\$18,474.74)	(\$4,713.79)	(\$1,389.12)	(\$2,406.17)
TRANSMISSION SERVICE	(\$940.82)	(\$1,308.72)	(\$1,490.21)	(\$1,441.52)	(\$1,083.71)	(\$1,169.82)	(\$1,134.08)
UPLIFT	\$0.09	\$15.90	\$1.42	\$0.01	\$5.29	\$7.91	\$0.72
RESIDUALS	\$228.18	\$192.43	(\$429.25)	\$3,645.97	\$2,892.13	\$3,508.77	\$5,450.29
ANCILLARY SERVICES	(\$9,031.31)	(\$14,705.06)	(\$20,958.56)	(\$2,526.58)	(\$1,271.68)	(\$1,319.70)	(\$1,300.58)
TCC	\$7,908.51	\$12,959.22	\$19,027.53	\$628.11	(\$64.32)	(\$101.43)	(\$77.46)
	18	19	20	21	22	23	24
ENERGY	(\$7,460.39)	(\$10,572.71)	(\$14,505.77)	(\$7,609.53)	(\$8,476.90)	(\$8,128.05)	(\$3,724.27)
TRANSMISSION SERVICE	(\$1,072.82)	(\$1,301.12)	(\$1,299.44)	(\$1,172.20)	(\$1,214.98)	(\$1,419.05)	(\$1,286.69)
UPLIFT	\$0.96	\$7.75	(\$1,812.32)	\$0.00	\$0.01	\$0.00	\$0.93
RESIDUALS	\$1,185.65	\$2,351.84	\$1,321.28	\$4,033.43	\$951.37	\$1,090.83	\$1,017.82
ANCILLARY SERVICES	(\$1,443.70)	(\$1,621.00)	(\$1,699.68)	(\$1,227.97)	(\$1,986.67)	(\$2,192.80)	(\$2,136.90)
TCC	\$97.68	(\$21.36)	\$0.00	(\$230.76)	\$405.81	\$422.22	\$561.21
	25	26	27	28	29		
ENERGY	(\$12,095.16)	(\$8,585.25)	(\$7,957.52)	(\$8,753.19)	(\$7,067.11)	(\$11,648.92)	
TRANSMISSION SERVICE	(\$1,389.18)	(\$1,415.35)	(\$1,271.48)	(\$1,462.93)	(\$1,358.81)	(\$1,682.38)	
UPLIFT	\$0.12	\$0.09	\$0.00	\$0.00	\$0.00	(\$0.04)	
RESIDUALS	\$3,248.20	\$406.93	\$1,977.47	\$1,950.00	\$3,886.62	\$3,057.25	
ANCILLARY SERVICES	(\$2,159.82)	(\$2,683.01)	(\$2,812.80)	(\$3,608.44)	(\$2,419.23)	(\$3,141.81)	
TCC	\$363.39	\$854.22	\$1,217.37	\$1,766.04	\$903.96	\$986.58	



SETTLEMENTS REPORT
November 2019 Settlement Adjustment
April 7, 2020

Initial Settlement – Market Supply Analysis

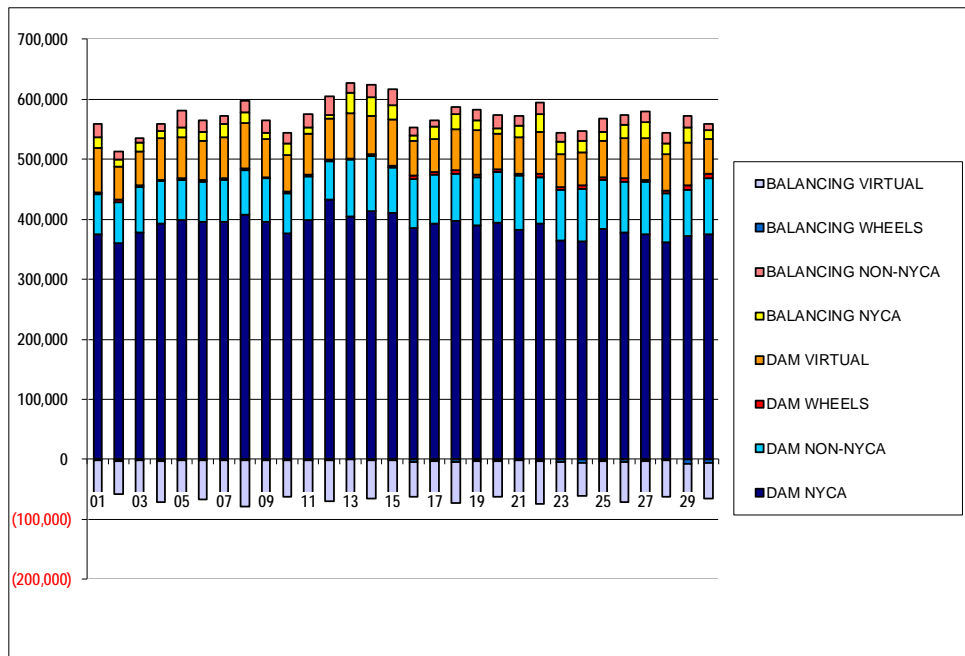
	MONDAY	TUESDAY	WEDNESDAY	THURSDAY	FRIDAY	SATURDAY	SUNDAY
					1	2	3
DAM NYCA					375,131	360,416	377,803
DAM NON-NYCA					66,700	68,339	75,386
DAM WHEELS					3,232	3,907	3,365
DAM VIRTUAL					74,433	54,637	55,911
BALANCING NYCA					20,315	13,142	14,942
BALANCING NON-NYCA					22,790	13,252	7,855
BALANCING WHEELS					(2,020)	(2,707)	(2,115)
BALANCING VIRTUAL					(74,433)	(54,637)	(55,911)
	4	5	6	7	8	9	10
DAM NYCA	393,397	398,712	395,944	396,234	407,843	395,390	376,279
DAM NON-NYCA	70,118	67,028	65,828	69,311	73,819	73,125	67,538
DAM WHEELS	2,411	3,070	3,061	2,429	2,569	2,049	2,365
DAM VIRTUAL	68,895	67,327	65,676	69,111	76,777	62,848	60,911
BALANCING NYCA	12,816	16,975	14,971	22,327	16,812	10,800	19,537
BALANCING NON-NYCA	11,950	27,663	19,580	13,197	20,256	21,022	17,694
BALANCING WHEELS	(2,411)	(1,870)	(1,490)	(989)	(1,129)	(849)	(1,165)
BALANCING VIRTUAL	(68,895)	(67,327)	(65,676)	(69,111)	(76,777)	(62,848)	(60,911)
	11	12	13	14	15	16	17
DAM NYCA	398,575	432,312	404,681	413,204	410,524	385,145	393,138
DAM NON-NYCA	73,370	64,506	94,443	92,967	75,361	82,122	81,065
DAM WHEELS	2,413	2,177	1,986	2,205	3,402	6,048	4,338
DAM VIRTUAL	67,424	68,216	75,309	64,407	76,514	57,130	55,334
BALANCING NYCA	11,876	7,552	34,354	30,695	23,961	9,308	20,002
BALANCING NON-NYCA	21,892	29,839	17,095	21,113	26,880	13,578	10,479
BALANCING WHEELS	(1,213)	(900)	(786)	(1,005)	(2,202)	(4,848)	(2,898)
BALANCING VIRTUAL	(67,424)	(68,216)	(75,309)	(64,407)	(76,514)	(57,130)	(55,334)
	18	19	20	21	22	23	24
DAM NYCA	396,640	390,232	394,171	382,569	392,826	365,186	363,656
DAM NON-NYCA	79,299	79,159	84,848	89,985	77,557	83,577	86,741
DAM WHEELS	5,767	5,137	4,470	3,275	4,894	5,509	6,503
DAM VIRTUAL	68,872	73,832	59,682	60,959	70,009	54,789	54,230
BALANCING NYCA	24,371	16,116	9,435	19,532	29,987	19,678	19,954
BALANCING NON-NYCA	12,778	18,667	20,920	15,422	19,512	15,691	15,717
BALANCING WHEELS	(4,327)	(3,697)	(2,978)	(1,835)	(3,454)	(4,069)	(6,503)
BALANCING VIRTUAL	(68,872)	(73,832)	(59,682)	(60,959)	(70,009)	(54,789)	(54,230)
	25	26	27	28	29	30	
DAM NYCA	383,820	377,530	375,251	362,105	372,623	374,433	
DAM NON-NYCA	81,302	84,422	86,717	81,057	75,858	93,265	
DAM WHEELS	4,598	6,496	3,943	4,940	8,358	7,352	
DAM VIRTUAL	61,139	66,272	68,875	60,613	71,226	59,244	
BALANCING NYCA	14,564	22,412	27,255	17,346	24,487	15,196	
BALANCING NON-NYCA	22,628	16,759	17,965	17,731	20,235	10,490	
BALANCING WHEELS	(3,158)	(5,056)	(2,383)	(1,940)	(6,758)	(6,151)	
BALANCING VIRTUAL	(61,139)	(66,272)	(68,875)	(60,613)	(71,226)	(59,244)	



SETTLEMENTS REPORT
November 2019 Settlement Adjustment
April 7, 2020

4-Month Settlement Adjustment – Market Supply Analysis

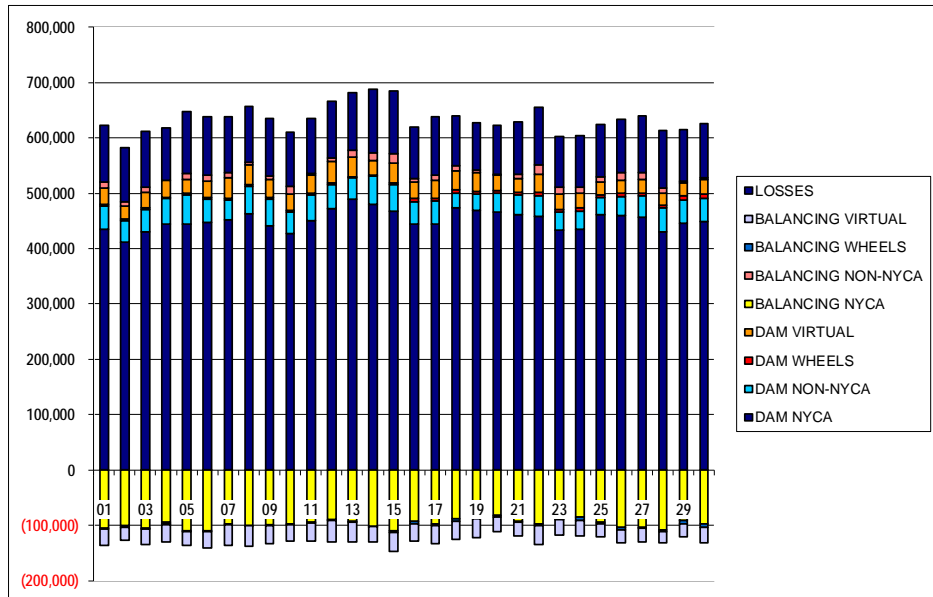
	MONDAY	TUESDAY	WEDNESDAY	THURSDAY	FRIDAY	SATURDAY	SUNDAY
					1	2	3
DAM NYCA					375,131	360,416	377,803
DAM NON-NYCA					66,700	68,339	75,386
DAM WHEELS					3,232	3,907	3,365
DAM VIRTUAL					74,433	54,637	55,911
BALANCING NYCA					16,835	12,840	14,997
BALANCING NON-NYCA					22,790	13,252	7,855
BALANCING WHEELS					(2,020)	(2,707)	(2,115)
BALANCING VIRTUAL					(74,433)	(54,637)	(55,911)
	4	5	6	7	8	9	10
DAM NYCA	393,397	398,712	395,944	396,234	407,843	395,390	376,279
DAM NON-NYCA	70,118	67,028	65,828	69,311	73,819	73,125	67,538
DAM WHEELS	2,411	3,070	3,061	2,429	2,569	2,049	2,365
DAM VIRTUAL	68,895	67,327	65,676	69,111	76,777	62,848	60,911
BALANCING NYCA	12,680	16,895	14,569	22,223	16,552	10,870	19,601
BALANCING NON-NYCA	11,950	27,663	19,580	13,197	20,256	21,022	17,694
BALANCING WHEELS	(2,411)	(1,870)	(1,490)	(989)	(1,129)	(849)	(1,165)
BALANCING VIRTUAL	(68,895)	(67,327)	(65,676)	(69,111)	(76,777)	(62,848)	(60,911)
	11	12	13	14	15	16	17
DAM NYCA	398,575	432,312	404,681	413,204	410,524	385,145	393,138
DAM NON-NYCA	73,370	64,506	94,443	92,967	75,361	82,122	81,065
DAM WHEELS	2,413	2,177	1,986	2,205	3,402	6,048	4,338
DAM VIRTUAL	67,424	68,216	75,309	64,407	76,514	57,130	55,334
BALANCING NYCA	11,775	6,979	33,770	30,264	23,979	9,421	20,128
BALANCING NON-NYCA	21,892	29,839	17,095	21,113	26,880	13,578	10,479
BALANCING WHEELS	(1,213)	(900)	(786)	(1,005)	(2,202)	(4,848)	(2,898)
BALANCING VIRTUAL	(67,424)	(68,216)	(75,309)	(64,407)	(76,514)	(57,130)	(55,334)
	18	19	20	21	22	23	24
DAM NYCA	396,640	390,232	394,171	382,569	392,826	365,186	363,656
DAM NON-NYCA	79,299	79,159	84,848	89,985	77,557	83,577	86,741
DAM WHEELS	5,767	5,137	4,470	3,275	4,894	5,509	6,503
DAM VIRTUAL	68,872	73,832	59,682	60,959	70,009	54,789	54,230
BALANCING NYCA	24,131	15,771	8,945	19,379	29,633	19,354	19,795
BALANCING NON-NYCA	12,778	18,667	20,920	15,422	19,512	15,691	15,717
BALANCING WHEELS	(4,327)	(3,697)	(2,978)	(1,835)	(3,454)	(4,069)	(6,503)
BALANCING VIRTUAL	(68,872)	(73,832)	(59,682)	(60,959)	(70,009)	(54,789)	(54,230)
	25	26	27	28	29	30	
DAM NYCA	383,820	377,530	375,251	362,105	372,623	374,433	
DAM NON-NYCA	81,302	84,422	86,717	81,057	75,858	93,265	
DAM WHEELS	4,598	6,496	3,943	4,940	8,358	7,352	
DAM VIRTUAL	61,139	66,272	68,875	60,613	71,226	59,244	
BALANCING NYCA	14,117	21,998	27,049	17,089	24,371	14,754	
BALANCING NON-NYCA	22,628	16,759	17,965	17,731	20,235	10,490	
BALANCING WHEELS	(3,158)	(5,056)	(2,383)	(1,940)	(6,758)	(6,151)	
BALANCING VIRTUAL	(61,139)	(66,272)	(68,875)	(60,613)	(71,226)	(59,244)	



SETTLEMENTS REPORT
November 2019 Settlement Adjustment
April 7, 2020

Initial Settlement – Market Withdrawals Analysis

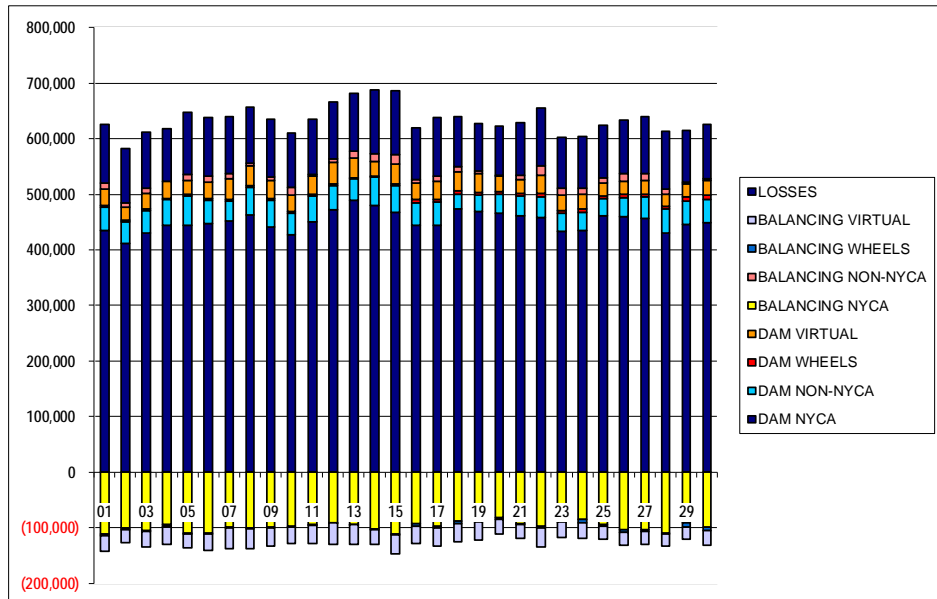
	MONDAY	TUESDAY	WEDNESDAY	THURSDAY	FRIDAY	SATURDAY	SUNDAY
					1	2	3
DAM NYCA					435,564	412,184	429,462
DAM NON-NYCA					40,979	37,550	40,743
DAM WHEELS					3,232	3,907	3,365
DAM VIRTUAL					29,153	23,629	28,270
BALANCING NYCA					(104,611)	(100,023)	(104,423)
BALANCING NON-NYCA					10,541	6,997	8,729
BALANCING WHEELS					(2,020)	(2,707)	(2,115)
BALANCING VIRTUAL					(29,153)	(23,629)	(28,270)
UFE/LOSSES					102,463	98,440	101,474
	4	5	6	7	8	9	10
DAM NYCA	444,740	444,862	447,555	452,095	462,709	441,504	427,269
DAM NON-NYCA	45,474	52,199	41,563	36,091	50,119	48,410	39,165
DAM WHEELS	2,411	3,070	3,061	2,429	2,569	2,049	2,365
DAM VIRTUAL	31,143	24,778	28,892	37,076	36,205	32,711	29,850
BALANCING NYCA	(94,340)	(109,601)	(109,791)	(97,726)	(99,893)	(99,501)	(97,464)
BALANCING NON-NYCA	(2,283)	10,737	12,063	10,007	4,362	6,995	13,518
BALANCING WHEELS	(2,411)	(1,870)	(1,490)	(989)	(1,129)	(849)	(1,165)
BALANCING VIRTUAL	(31,143)	(24,778)	(28,892)	(37,076)	(36,205)	(32,711)	(29,850)
UFE/LOSSES	94,689	112,182	104,933	100,602	101,433	102,928	98,560
	11	12	13	14	15	16	17
DAM NYCA	450,331	471,550	488,985	479,702	467,081	444,488	443,660
DAM NON-NYCA	47,106	44,436	38,373	50,938	48,307	39,645	43,072
DAM WHEELS	2,413	2,177	1,986	2,205	3,402	6,048	4,338
DAM VIRTUAL	32,429	39,037	35,557	26,752	34,862	29,739	31,727
BALANCING NYCA	(93,965)	(89,972)	(92,901)	(101,262)	(110,341)	(92,902)	(97,500)
BALANCING NON-NYCA	3,856	7,001	12,882	13,926	17,843	6,585	10,224
BALANCING WHEELS	(1,213)	(900)	(786)	(1,005)	(2,202)	(4,848)	(2,898)
BALANCING VIRTUAL	(32,429)	(39,037)	(35,557)	(26,752)	(34,862)	(29,739)	(31,727)
UFE/LOSSES	98,385	101,194	103,235	114,675	113,837	92,337	105,227
	18	19	20	21	22	23	24
DAM NYCA	473,213	468,865	465,246	461,908	457,565	434,097	434,270
DAM NON-NYCA	27,596	29,860	35,545	35,696	38,509	31,671	32,794
DAM WHEELS	5,767	5,137	4,470	3,275	4,894	5,509	6,503
DAM VIRTUAL	33,211	33,115	26,854	24,836	33,459	27,209	27,016
BALANCING NYCA	(87,714)	(84,878)	(81,300)	(92,536)	(96,862)	(85,732)	(84,680)
BALANCING NON-NYCA	9,344	4,631	2,619	8,488	16,993	12,422	10,013
BALANCING WHEELS	(4,327)	(3,697)	(2,978)	(1,835)	(3,454)	(4,069)	(6,503)
BALANCING VIRTUAL	(33,211)	(33,115)	(26,854)	(24,836)	(33,459)	(27,209)	(27,016)
UFE/LOSSES	90,649	85,695	87,264	93,951	103,677	91,674	93,671
	25	26	27	28	29	30	
DAM NYCA	461,614	459,498	456,727	430,298	446,367	448,408	
DAM NON-NYCA	31,409	34,304	39,138	43,235	41,302	42,007	
DAM WHEELS	4,598	6,496	3,943	4,940	8,358	7,352	
DAM VIRTUAL	22,562	23,656	24,536	21,094	22,648	27,280	
BALANCING NYCA	(93,975)	(102,766)	(103,267)	(108,698)	(91,147)	(97,472)	
BALANCING NON-NYCA	9,766	13,178	12,416	10,502	2,363	3,152	
BALANCING WHEELS	(3,158)	(5,056)	(2,383)	(1,940)	(6,758)	(6,151)	
BALANCING VIRTUAL	(22,562)	(23,656)	(24,536)	(21,094)	(22,648)	(27,280)	
UFE/LOSSES	93,500	96,908	102,175	102,901	94,317	97,290	



SETTLEMENTS REPORT
November 2019 Settlement Adjustment
April 7, 2020

4-Month Settlement Adjustment – Market Withdrawals Analysis

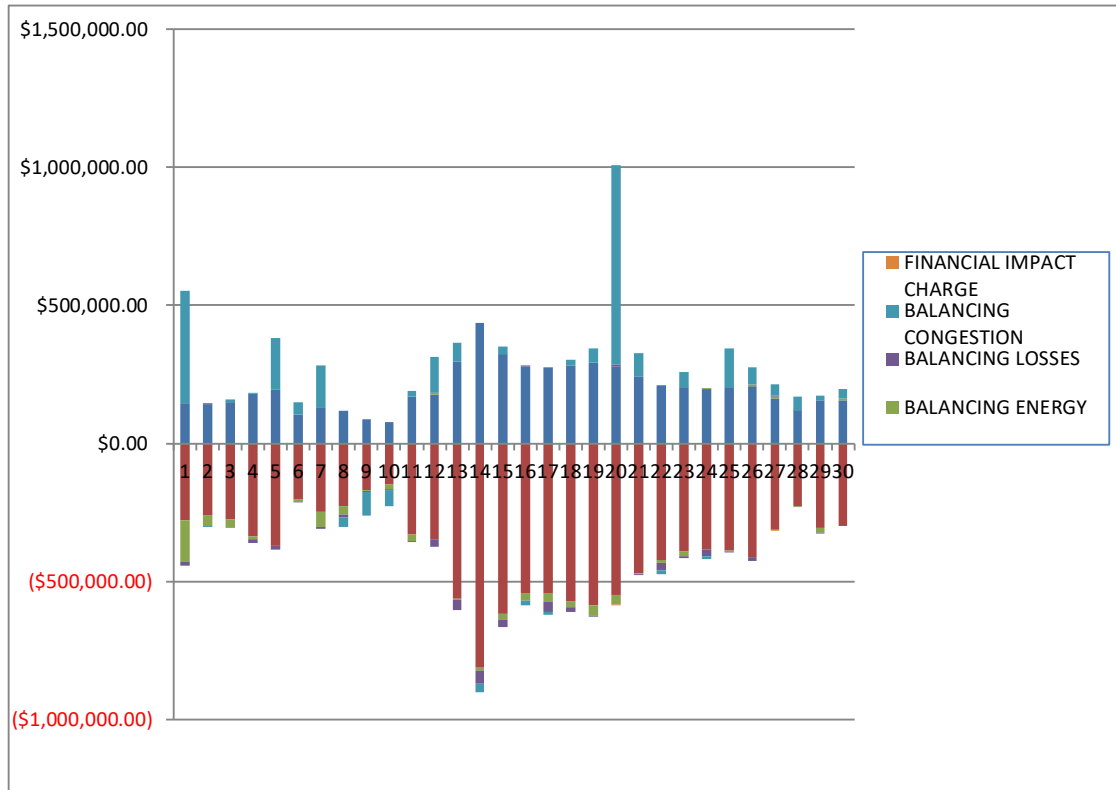
	MONDAY	TUESDAY	WEDNESDAY	THURSDAY	FRIDAY	SATURDAY	SUNDAY
					1	2	3
DAM NYCA					435,564	412,184	429,462
DAM NON-NYCA					40,979	37,550	40,743
DAM WHEELS					3,232	3,907	3,365
DAM VIRTUAL					29,153	23,629	28,270
BALANCING NYCA					(111,557)	(100,315)	(104,531)
BALANCING NON-NYCA					10,541	6,997	8,729
BALANCING WHEELS					(2,020)	(2,707)	(2,115)
BALANCING VIRTUAL					(29,153)	(23,629)	(28,270)
UFE/LOSSES					105,929	98,431	101,637
	4	5	6	7	8	9	10
DAM NYCA	444,740	444,862	447,555	452,095	462,709	441,504	427,269
DAM NON-NYCA	45,474	52,199	41,563	36,091	50,119	48,410	39,165
DAM WHEELS	2,411	3,070	3,061	2,429	2,569	2,049	2,365
DAM VIRTUAL	31,143	24,778	28,892	37,076	36,205	32,711	29,850
BALANCING NYCA	(94,479)	(109,680)	(110,158)	(98,994)	(100,042)	(99,316)	(97,344)
BALANCING NON-NYCA		10,737	12,063	10,007	4,362	6,995	13,518
BALANCING WHEELS	(2,411)	(1,870)	(1,490)	(989)	(1,129)	(849)	(1,165)
BALANCING VIRTUAL	(31,143)	(24,778)	(28,892)	(37,076)	(36,205)	(32,711)	(29,850)
UFE/LOSSES	94,692	112,180	104,898	101,766	101,322	102,814	98,503
	11	12	13	14	15	16	17
DAM NYCA	450,331	471,550	488,985	479,702	467,081	444,488	443,660
DAM NON-NYCA	47,106	44,436	38,373	50,938	48,307	39,645	43,072
DAM WHEELS	2,413	2,177	1,986	2,205	3,402	6,048	4,338
DAM VIRTUAL	32,429	39,037	35,557	26,752	34,862	29,739	31,727
BALANCING NYCA	(94,073)	(90,551)	(93,491)	(101,759)	(110,489)	(92,943)	(97,594)
BALANCING NON-NYCA	3,856	7,001	12,882	13,926	17,843	6,585	10,224
BALANCING WHEELS	(1,213)	(900)	(786)	(1,005)	(2,202)	(4,848)	(2,898)
BALANCING VIRTUAL	(32,429)	(39,037)	(35,557)	(26,752)	(34,862)	(29,739)	(31,727)
UFE/LOSSES	98,392	101,200	103,241	114,741	114,002	92,492	105,448
	18	19	20	21	22	23	24
DAM NYCA	473,213	468,865	465,246	461,908	457,565	434,097	434,270
DAM NON-NYCA	27,596	29,860	35,545	35,696	38,509	31,671	32,794
DAM WHEELS	5,767	5,137	4,470	3,275	4,894	5,509	6,503
DAM VIRTUAL	33,211	33,115	26,854	24,836	33,459	27,209	27,016
BALANCING NYCA	(87,966)	(85,253)	(81,807)	(92,836)	(97,250)	(86,076)	(84,864)
BALANCING NON-NYCA	9,344	4,631	2,619	8,488	16,993	12,422	10,013
BALANCING WHEELS	(4,327)	(3,697)	(2,978)	(1,835)	(3,454)	(4,069)	(6,503)
BALANCING VIRTUAL	(33,211)	(33,115)	(26,854)	(24,836)	(33,459)	(27,209)	(27,016)
UFE/LOSSES	90,661	85,725	87,281	94,099	103,710	91,695	93,696
	25	26	27	28	29	30	
DAM NYCA	461,614	459,498	456,727	430,298	446,367	448,408	
DAM NON-NYCA	31,409	34,304	39,138	43,235	41,302	42,007	
DAM WHEELS	4,598	6,496	3,943	4,940	8,358	7,352	
DAM VIRTUAL	22,562	23,656	24,536	21,094	22,648	27,280	
BALANCING NYCA	(94,548)	(103,192)	(103,609)	(109,080)	(91,417)	(98,037)	
BALANCING NON-NYCA	9,766	13,178	12,416	10,502	2,363	3,152	
BALANCING WHEELS	(3,158)	(5,056)	(2,383)	(1,940)	(6,758)	(6,151)	
BALANCING VIRTUAL	(22,562)	(23,656)	(24,536)	(21,094)	(22,648)	(27,280)	
UFE/LOSSES	93,626	96,920	102,310	103,026	94,471	97,412	



SETTLEMENTS REPORT
November 2019 Settlement Adjustment
April 7, 2020

Initial Settlement – Market Residuals Analysis

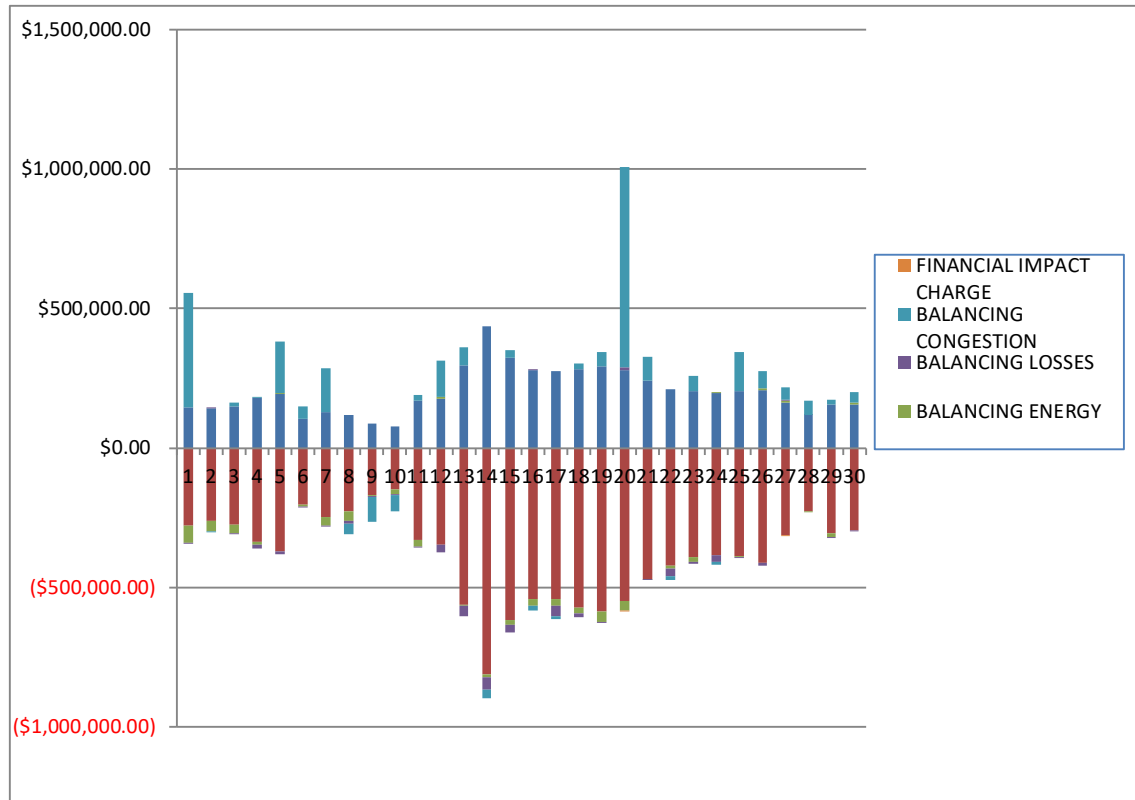
	MONDAY	TUESDAY	WEDNESDAY	THURSDAY	FRIDAY	SATURDAY	SUNDAY
					1	2	3
DAM ENERGY					\$147,051.06	\$142,669.83	\$148,078.96
DAM LOSSES					(\$278,154.15)	(\$262,837.77)	(\$274,700.92)
BALANCING ENERGY					(\$152,608.84)	(\$35,607.37)	(\$32,535.20)
BALANCING LOSSES					(\$11,871.89)	\$1,889.18	\$40.57
BALANCING CONGESTION					\$406,563.30	(\$728.94)	\$12,733.56
FINANCIAL IMPACT CHARGE					\$0.00	\$0.00	\$0.00
	4	5	6	7	8	9	10
DAM ENERGY	\$180,896.39	\$195,040.05	\$104,243.12	\$128,218.59	\$118,069.32	\$86,655.28	\$77,678.49
DAM LOSSES	(\$335,429.42)	(\$369,739.58)	(\$203,287.03)	(\$246,903.13)	(\$228,530.32)	(\$169,711.49)	(\$148,446.39)
BALANCING ENERGY	(\$10,491.29)	\$3,235.79	(\$6,420.17)	(\$55,976.06)	(\$28,848.12)	(\$2,506.15)	(\$16,784.12)
BALANCING LOSSES	(\$14,130.73)	(\$13,762.11)	(\$624.12)	(\$6,392.05)	(\$11,517.56)	(\$3,099.15)	(\$2,900.14)
BALANCING CONGESTION	\$1,576.96	\$184,945.99	\$45,770.66	\$154,153.89	(\$35,320.52)	(\$85,006.03)	(\$57,815.44)
FINANCIAL IMPACT CHARGE	\$0.00	\$0.00	\$0.00	\$0.00	\$0.00	\$0.00	\$0.00
	11	12	13	14	15	16	17
DAM ENERGY	\$169,251.60	\$176,969.55	\$295,239.50	\$438,098.28	\$323,200.62	\$277,450.24	\$274,346.11
DAM LOSSES	(\$330,974.68)	(\$348,299.55)	(\$564,154.61)	(\$812,091.67)	(\$617,779.99)	(\$542,865.01)	(\$541,629.59)
BALANCING ENERGY	(\$23,285.52)	\$5,496.19	(\$2,918.96)	(\$11,937.10)	(\$19,687.77)	(\$27,589.20)	(\$30,311.27)
BALANCING LOSSES	(\$2,883.40)	(\$26,634.94)	(\$36,824.02)	(\$46,764.82)	(\$29,224.79)	\$4,232.05	(\$37,718.20)
BALANCING CONGESTION	\$22,257.05	\$130,459.83	\$67,973.41	(\$31,729.52)	\$28,708.51	(\$14,786.26)	(\$10,226.82)
FINANCIAL IMPACT CHARGE	\$0.00	\$0.00	\$0.00	\$0.00	\$0.00	\$0.00	\$0.00
	18	19	20	21	22	23	24
DAM ENERGY	\$283,826.79	\$294,107.23	\$278,280.94	\$241,909.60	\$211,564.83	\$203,409.76	\$195,613.95
DAM LOSSES	(\$572,882.58)	(\$586,912.41)	(\$548,746.29)	(\$470,862.31)	(\$423,602.95)	(\$393,174.95)	(\$383,980.78)
BALANCING ENERGY	(\$20,019.32)	(\$38,271.46)	(\$33,426.69)	(\$4,237.95)	(\$8,023.54)	(\$14,736.18)	\$4,074.66
BALANCING LOSSES	(\$16,664.16)	(\$3,320.43)	\$9,152.34	(\$2,705.53)	(\$27,725.09)	(\$7,864.97)	(\$25,592.56)
BALANCING CONGESTION	\$20,542.54	\$49,330.77	\$720,357.01	\$86,350.45	(\$13,555.58)	\$55,281.12	(\$8,153.41)
FINANCIAL IMPACT CHARGE	\$0.00	\$0.00	(\$99.94)	\$0.00	\$0.00	\$0.00	\$0.00
	25	26	27	28	29	30	
DAM ENERGY	\$204,925.90	\$208,814.14	\$162,848.99	\$117,934.32	\$155,929.32	\$156,734.64	
DAM LOSSES	(\$389,313.77)	(\$412,272.38)	(\$311,281.61)	(\$227,898.58)	(\$307,601.96)	(\$294,406.86)	
BALANCING ENERGY	(\$2,596.67)	\$4,803.00	\$6,282.40	(\$4,100.89)	(\$13,908.14)	\$5,050.09	
BALANCING LOSSES	(\$4,602.70)	(\$12,048.43)	\$3,971.38	\$1,881.05	(\$5,021.45)	(\$5,708.77)	
BALANCING CONGESTION	\$138,315.25	\$62,711.21	\$41,625.54	\$50,181.70	\$15,841.53	\$34,179.23	
FINANCIAL IMPACT CHARGE	\$0.00	\$0.00	(\$154.93)	\$0.00	\$0.00	\$0.00	



SETTLEMENTS REPORT
November 2019 Settlement Adjustment
April 7, 2020

4-Month Settlement Adjustment – Market Residuals Analysis

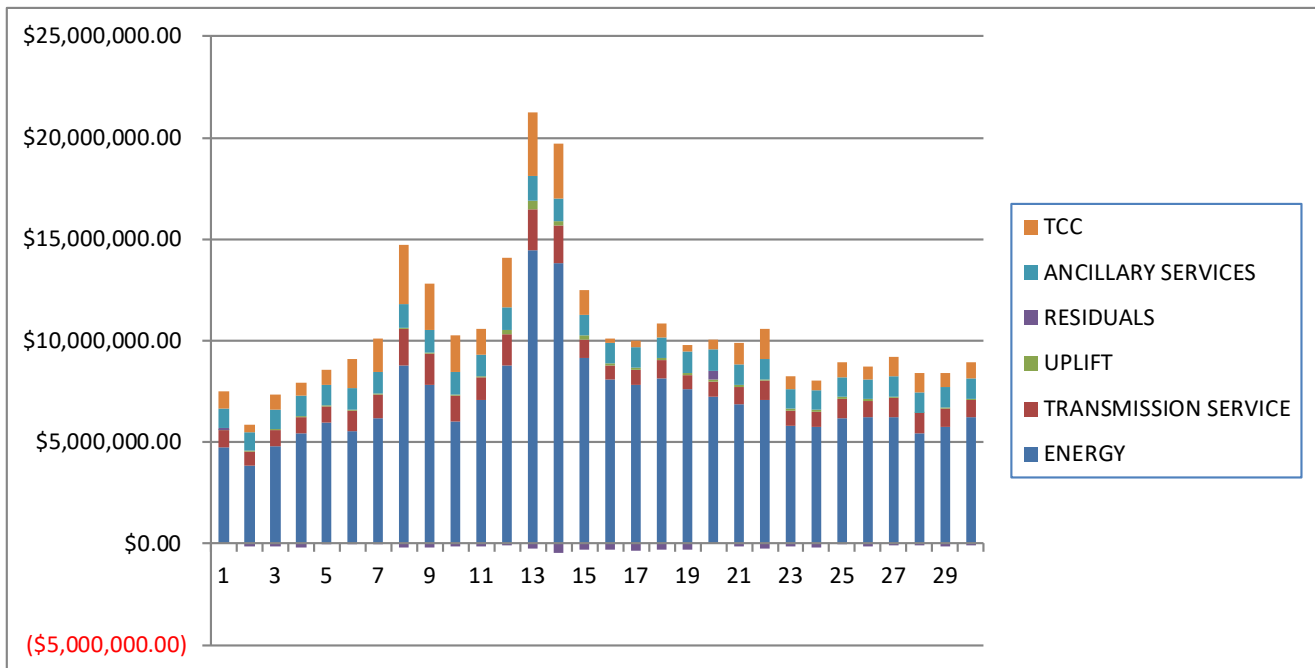
	MONDAY	TUESDAY	WEDNESDAY	THURSDAY	FRIDAY	SATURDAY	SUNDAY
					1	2	3
DAM ENERGY					\$147,051.06	\$142,669.83	\$148,078.96
DAM LOSSES					(\$278,154.15)	(\$262,837.77)	(\$274,700.93)
BALANCING ENERGY					(\$62,974.48)	(\$36,349.86)	(\$30,550.39)
BALANCING LOSSES					(\$2,606.02)	\$2,175.12	(\$174.46)
BALANCING CONGESTION					\$408,743.52	(\$1,184.23)	\$13,200.62
FINANCIAL IMPACT CHARGE					\$0.00	\$0.00	\$0.00
	4	5	6	7	8	9	10
DAM ENERGY	\$180,896.40	\$195,040.05	\$104,243.12	\$128,218.59	\$118,069.32	\$86,655.28	\$77,678.49
DAM LOSSES	(\$335,429.42)	(\$369,739.58)	(\$203,287.03)	(\$246,903.14)	(\$228,530.32)	(\$169,711.50)	(\$148,446.39)
BALANCING ENERGY	(\$10,371.53)	\$3,204.42	(\$6,764.17)	(\$31,507.70)	(\$31,458.52)	(\$3,156.57)	(\$16,399.35)
BALANCING LOSSES	(\$14,007.74)	(\$12,788.30)	(\$481.64)	(\$3,768.15)	(\$11,505.07)	(\$3,151.35)	(\$2,870.49)
BALANCING CONGESTION	\$1,277.09	\$184,998.98	\$44,993.17	\$158,585.62	(\$36,656.51)	(\$88,770.91)	(\$60,824.01)
FINANCIAL IMPACT CHARGE	\$0.00	\$0.00	\$0.00	\$0.00	\$0.00	\$0.00	\$0.00
	11	12	13	14	15	16	17
DAM ENERGY	\$169,251.60	\$176,969.55	\$295,239.50	\$438,098.27	\$323,200.62	\$277,450.23	\$274,346.11
DAM LOSSES	(\$330,974.68)	(\$348,299.55)	(\$564,154.60)	(\$812,091.67)	(\$617,779.99)	(\$542,865.01)	(\$541,629.59)
BALANCING ENERGY	(\$23,034.68)	\$5,682.86	(\$2,552.60)	(\$9,151.70)	(\$15,381.82)	(\$24,224.30)	(\$25,293.43)
BALANCING LOSSES	(\$2,857.85)	(\$26,003.01)	(\$36,063.48)	(\$45,586.60)	(\$28,801.11)	\$4,330.05	(\$37,367.56)
BALANCING CONGESTION	\$22,208.84	\$129,833.66	\$66,417.25	(\$32,047.16)	\$26,871.01	(\$14,740.38)	(\$10,145.01)
FINANCIAL IMPACT CHARGE	\$0.00	\$0.00	\$0.00	\$0.00	\$0.00	\$0.00	\$0.00
	18	19	20	21	22	23	24
DAM ENERGY	\$283,826.79	\$294,107.23	\$278,280.93	\$241,909.60	\$211,564.83	\$203,409.76	\$195,613.95
DAM LOSSES	(\$572,882.58)	(\$586,912.41)	(\$548,746.29)	(\$470,862.32)	(\$423,602.96)	(\$393,174.95)	(\$383,980.78)
BALANCING ENERGY	(\$19,761.99)	(\$37,479.28)	(\$33,028.61)	(\$1,044.09)	(\$7,456.76)	(\$14,377.10)	\$4,642.54
BALANCING LOSSES	(\$15,741.97)	(\$2,260.79)	\$9,788.36	(\$1,913.41)	(\$27,378.82)	(\$7,391.59)	(\$25,254.64)
BALANCING CONGESTION	\$20,548.67	\$49,830.79	\$720,644.19	\$86,397.91	(\$13,517.25)	\$55,539.49	(\$8,041.39)
FINANCIAL IMPACT CHARGE	\$0.00	\$0.00	(\$99.93)	\$0.00	\$0.00	\$0.00	\$0.00
	25	26	27	28	29	30	
DAM ENERGY	\$204,925.89	\$208,814.14	\$162,848.98	\$117,934.32	\$155,929.32	\$156,734.64	
DAM LOSSES	(\$389,313.77)	(\$412,272.39)	(\$311,281.61)	(\$227,898.57)	(\$307,601.97)	(\$294,406.85)	
BALANCING ENERGY	(\$660.56)	\$4,997.78	\$7,441.98	(\$3,290.75)	(\$10,693.59)	\$6,578.69	
BALANCING LOSSES	(\$3,994.94)	(\$11,742.17)	\$4,149.38	\$1,999.13	(\$4,696.81)	(\$5,545.67)	
BALANCING CONGESTION	\$139,019.59	\$62,617.11	\$42,265.36	\$51,203.47	\$16,188.97	\$35,544.77	
FINANCIAL IMPACT CHARGE	\$0.00	\$0.00	(\$154.85)	\$0.00	\$0.00	\$0.00	



SETTLEMENTS REPORT
November 2019 Settlement Adjustment
April 7, 2020

Initial Settlement – Market Costs Analysis

	MONDAY	TUESDAY	WEDNESDAY	THURSDAY	FRIDAY	SATURDAY	SUNDAY
					1	2	3
ENERGY					\$4,761,025.02	\$3,866,332.59	\$4,790,884.20
TRANSMISSION SERVICE					\$806,552.89	\$657,226.68	\$794,484.76
UPLIFT					\$29,565.99	\$52,809.63	\$53,963.00
RESIDUALS					\$110,979.48	(\$154,615.07)	(\$146,383.03)
ANCILLARY SERVICES					\$969,763.03	\$918,853.99	\$983,816.49
TCC					\$832,342.85	\$365,473.82	\$702,032.63
	4	5	6	7	8	9	10
ENERGY	\$5,448,672.91	\$5,981,760.48	\$5,528,297.25	\$6,153,639.59	\$8,782,511.58	\$7,822,172.29	\$6,006,667.26
TRANSMISSION SERVICE	\$788,015.46	\$798,066.47	\$1,020,326.62	\$1,216,831.95	\$1,787,642.18	\$1,519,947.62	\$1,305,581.12
UPLIFT	\$41,005.24	\$45,692.89	\$45,271.51	\$50,108.11	\$63,357.45	\$72,111.00	\$40,517.13
RESIDUALS	(\$177,578.09)	(\$279.86)	(\$60,317.54)	(\$26,898.76)	(\$186,147.20)	(\$173,667.54)	(\$148,267.60)
ANCILLARY SERVICES	\$1,006,763.53	\$999,964.81	\$1,058,246.33	\$1,063,936.99	\$1,151,848.16	\$1,138,174.41	\$1,088,224.93
TCC	\$650,829.55	\$762,350.61	\$1,453,448.44	\$1,633,071.51	\$2,930,471.75	\$2,241,335.43	\$1,820,614.39
	11	12	13	14	15	16	17
ENERGY	\$7,053,987.59	\$8,776,061.29	\$14,481,663.49	\$13,823,570.81	\$9,133,192.32	\$8,096,060.29	\$7,839,044.18
TRANSMISSION SERVICE	\$1,140,460.82	\$1,554,074.59	\$1,999,897.94	\$1,866,928.57	\$942,385.69	\$683,986.48	\$732,857.85
UPLIFT	\$45,445.70	\$175,955.32	\$427,615.04	\$222,541.91	\$163,636.91	\$118,341.95	\$120,390.76
RESIDUALS	(\$165,634.95)	(\$62,008.92)	(\$240,684.68)	(\$464,424.83)	(\$314,783.42)	(\$303,558.18)	(\$345,539.77)
ANCILLARY SERVICES	\$1,067,815.78	\$1,147,865.40	\$1,199,029.26	\$1,114,889.53	\$1,040,888.55	\$1,005,788.53	\$992,121.54
TCC	\$1,285,577.89	\$2,411,432.96	\$3,151,363.31	\$2,708,948.70	\$1,237,138.31	\$191,928.41	\$336,150.77
	18	19	20	21	22	23	24
ENERGY	\$8,159,998.87	\$7,589,828.25	\$7,232,894.57	\$6,857,744.69	\$7,064,323.25	\$5,830,151.04	\$5,740,449.33
TRANSMISSION SERVICE	\$908,182.71	\$725,456.38	\$730,710.87	\$844,439.64	\$958,252.56	\$727,524.09	\$753,255.99
UPLIFT	\$71,830.97	\$113,410.37	\$139,155.00	\$106,900.31	\$84,938.74	\$78,479.07	\$96,372.28
RESIDUALS	(\$305,196.73)	(\$285,066.30)	\$425,517.37	(\$149,545.74)	(\$261,342.33)	(\$157,085.22)	(\$218,038.14)
ANCILLARY SERVICES	\$1,028,985.19	\$1,014,333.90	\$1,048,959.43	\$1,003,842.30	\$1,004,228.94	\$959,606.36	\$950,839.96
TCC	\$675,859.38	\$357,520.31	\$464,142.15	\$1,061,833.66	\$1,454,856.24	\$627,545.46	\$473,651.66
	25	26	27	28	29	30	
ENERGY	\$6,201,001.34	\$6,210,987.31	\$6,214,087.23	\$5,444,067.64	\$5,772,924.70	\$6,212,633.98	
TRANSMISSION SERVICE	\$935,174.25	\$816,104.00	\$969,343.66	\$1,006,584.02	\$884,000.81	\$882,599.42	
UPLIFT	\$77,414.79	\$92,110.52	\$43,506.54	\$13,218.94	\$54,491.67	\$51,004.39	
RESIDUALS	(\$53,271.99)	(\$147,992.46)	(\$96,708.23)	(\$62,002.40)	(\$154,760.70)	(\$104,151.67)	
ANCILLARY SERVICES	\$975,703.23	\$967,951.41	\$995,269.53	\$971,484.34	\$998,680.70	\$1,018,418.58	
TCC	\$757,665.82	\$628,291.79	\$958,894.67	\$976,802.26	\$684,402.48	\$748,744.70	



SETTLEMENTS REPORT
November 2019 Settlement Adjustment
April 7, 2020

4-Month Settlement Adjustment – Market Costs Analysis

	MONDAY	TUESDAY	WEDNESDAY	THURSDAY	FRIDAY	SATURDAY	SUNDAY
					1	2	3
ENERGY					\$4,576,288.05	\$3,860,911.23	\$4,789,240.42
TRANSMISSION SERVICE					\$799,007.80	\$656,032.05	\$793,554.71
UPLIFT					\$29,565.99	\$52,800.76	\$53,962.78
RESIDUALS					\$212,059.93	(\$155,526.91)	(\$144,146.20)
ANCILLARY SERVICES					\$957,954.67	\$916,889.27	\$982,120.32
TCC					\$833,011.04	\$365,713.10	\$702,625.55
	4	5	6	7	8	9	10
ENERGY	\$5,446,521.76	\$5,979,837.98	\$5,520,551.26	\$6,119,065.16	\$8,780,444.27	\$7,833,200.68	\$6,008,787.42
TRANSMISSION SERVICE	\$787,172.29	\$797,260.81	\$1,019,036.82	\$1,214,719.97	\$1,786,637.35	\$1,519,246.72	\$1,304,785.34
UPLIFT	\$41,005.88	\$45,693.36	\$45,271.52	\$50,108.11	\$63,357.45	\$72,110.67	\$40,517.06
RESIDUALS	(\$177,635.20)	\$715.57	(\$61,296.55)	\$4,625.22	(\$190,081.10)	(\$178,135.05)	(\$150,861.75)
ANCILLARY SERVICES	\$1,004,699.05	\$998,562.59	\$1,047,750.00	\$1,049,421.29	\$1,131,094.82	\$1,117,816.61	\$1,071,476.41
TCC	\$651,859.36	\$762,773.73	\$1,462,281.19	\$1,644,679.74	\$2,949,916.43	\$2,260,877.52	\$1,836,424.63
	11	12	13	14	15	16	17
ENERGY	\$7,051,588.27	\$8,756,872.27	\$14,456,340.42	\$13,805,096.07	\$9,128,478.53	\$8,094,671.17	\$7,836,638.01
TRANSMISSION SERVICE	\$1,139,520.00	\$1,552,765.87	\$1,998,407.73	\$1,865,487.05	\$941,301.98	\$682,816.66	\$731,723.77
UPLIFT	\$45,445.79	\$175,971.22	\$427,616.46	\$222,541.92	\$163,642.20	\$118,349.86	\$120,391.48
RESIDUALS	(\$165,406.77)	(\$61,816.49)	(\$241,113.93)	(\$460,778.86)	(\$311,891.29)	(\$300,049.41)	(\$340,089.48)
ANCILLARY SERVICES	\$1,058,784.47	\$1,133,160.34	\$1,178,070.70	\$1,112,362.95	\$1,039,616.87	\$1,004,468.83	\$990,820.96
TCC	\$1,293,486.40	\$2,424,392.18	\$3,170,390.84	\$2,709,576.81	\$1,237,073.99	\$191,826.98	\$336,073.31
	18	19	20	21	22	23	24
ENERGY	\$8,152,538.48	\$7,579,255.54	\$7,218,388.80	\$6,850,135.16	\$7,055,846.35	\$5,822,022.99	\$5,736,725.06
TRANSMISSION SERVICE	\$907,109.89	\$724,155.26	\$729,411.43	\$843,267.44	\$957,037.58	\$726,105.04	\$751,969.30
UPLIFT	\$71,831.93	\$113,418.12	\$137,342.68	\$106,900.31	\$84,938.75	\$78,479.07	\$96,373.21
RESIDUALS	(\$304,011.08)	(\$282,714.46)	\$426,838.65	(\$145,512.31)	(\$260,390.96)	(\$155,994.39)	(\$217,020.32)
ANCILLARY SERVICES	\$1,027,541.49	\$1,012,712.90	\$1,047,259.75	\$1,002,614.33	\$1,002,242.27	\$957,413.56	\$948,703.06
TCC	\$675,957.06	\$357,498.95	\$464,142.15	\$1,061,602.90	\$1,455,262.05	\$627,967.68	\$474,212.87
	25	26	27	28	29	30	
ENERGY	\$6,188,906.18	\$6,202,402.06	\$6,206,129.71	\$5,435,314.45	\$5,765,857.59	\$6,200,985.06	
TRANSMISSION SERVICE	\$933,785.07	\$814,688.65	\$968,072.18	\$1,005,121.09	\$882,642.00	\$880,917.04	
UPLIFT	\$77,414.91	\$92,110.61	\$43,506.54	\$13,218.94	\$54,491.67	\$51,004.35	
RESIDUALS	(\$50,023.79)	(\$147,585.53)	(\$94,730.76)	(\$60,052.40)	(\$150,874.08)	(\$101,094.42)	
ANCILLARY SERVICES	\$973,543.41	\$965,268.40	\$992,456.73	\$967,875.90	\$996,261.47	\$1,015,276.77	
TCC	\$758,029.21	\$629,146.01	\$960,112.04	\$978,568.30	\$685,306.44	\$749,731.28	

