

Estimated Impacts of COVID-19 on NYISO Demand

Analysis through 4/18/2020

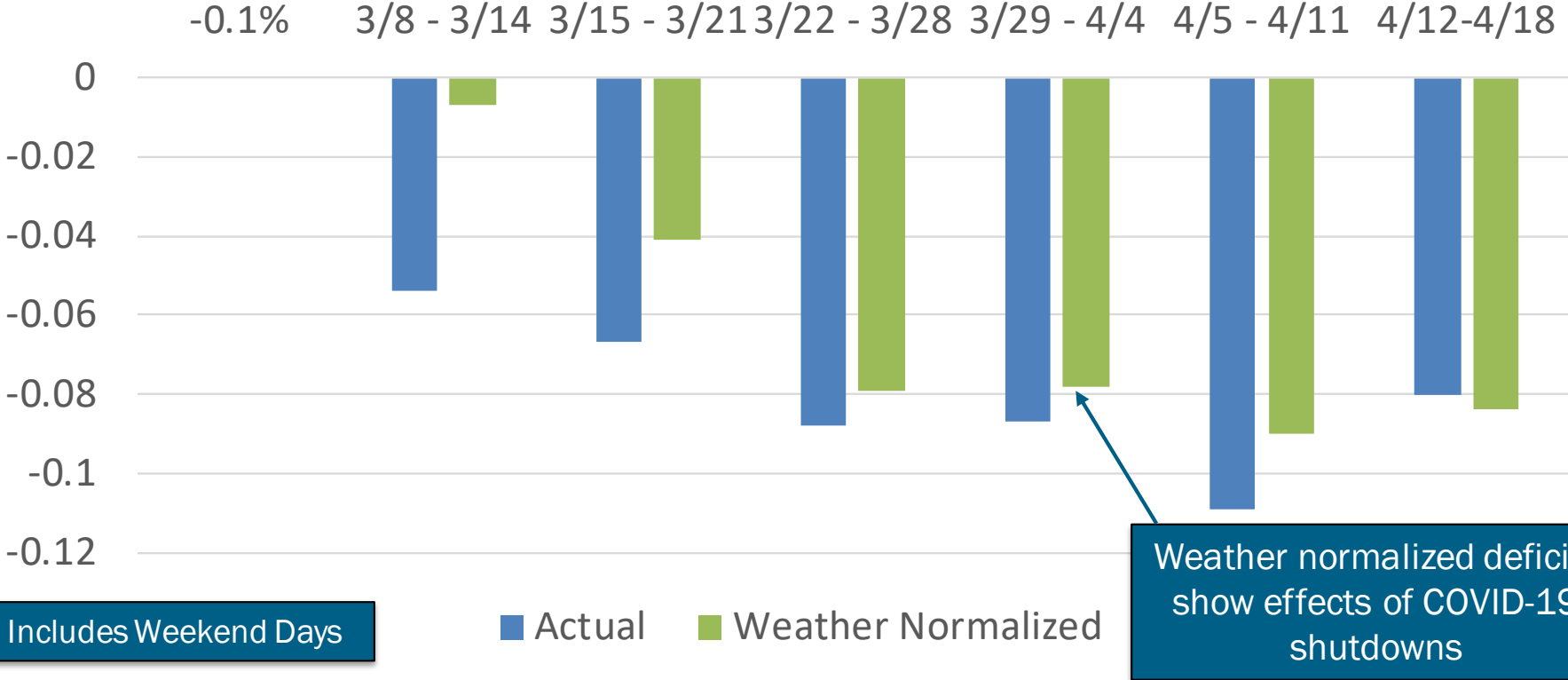
Demand Forecasting & Analysis Team
System Resources and Planning

COVID-19 Tracking Update

April 21, 2020

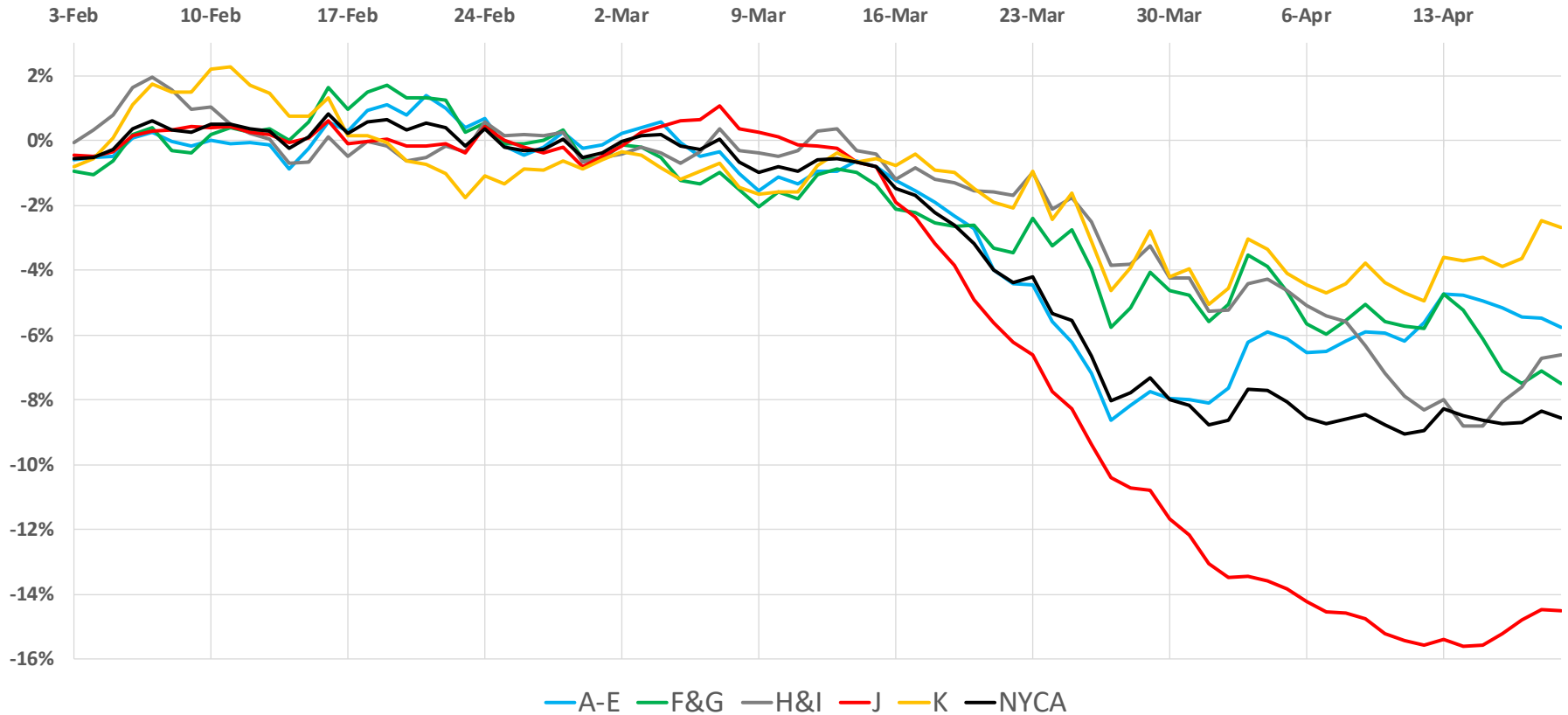
Recent Impacts on Daily Energy by Week

Weekly Energy Use -% Versus Expected (NYCA)



Regional Impacts on Daily Energy Patterns

2020 Weather Normalized Load Relative to Expected Load, 7-Day Moving Average (Daily Energy)

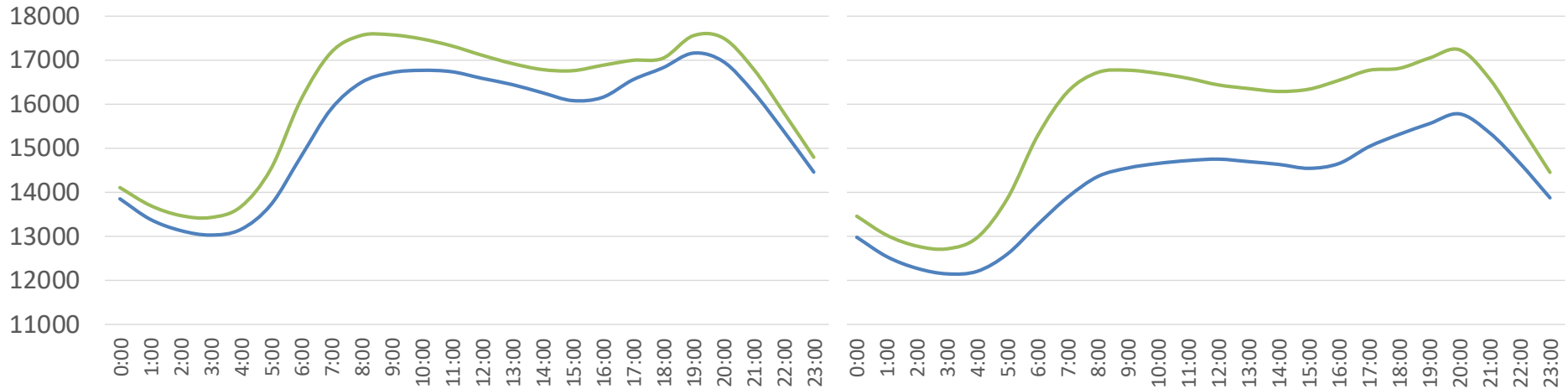


Recent Impacts on Hourly Load Patterns

— Actual — Simulated

March 16-20 (MW)

April 13-17 (MW)



Week 1 of COVID-19 Shutdowns

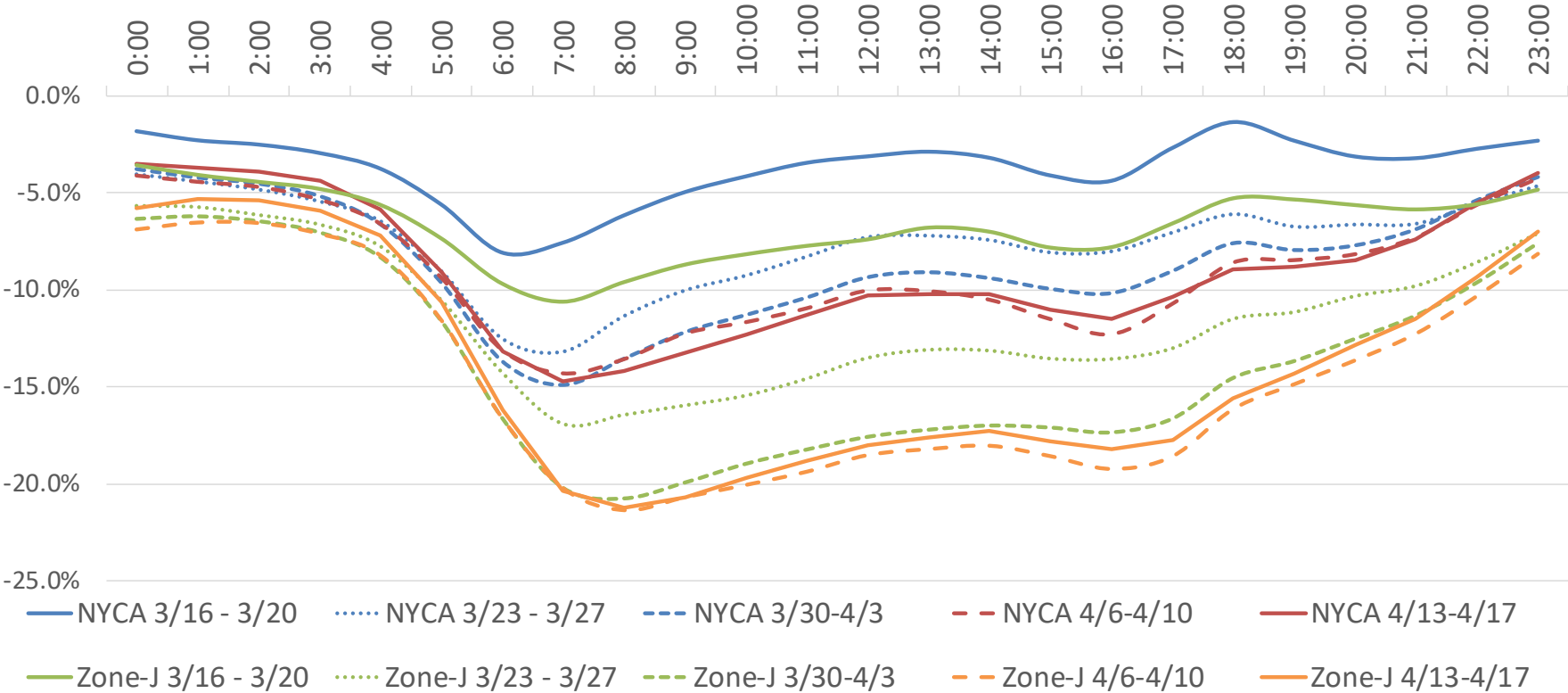
Week 6

Note: As of 4/20/2020, the NYISO hourly simulation model has been updated. Hourly deficits are now approximately 2-3% below those previously reported for April



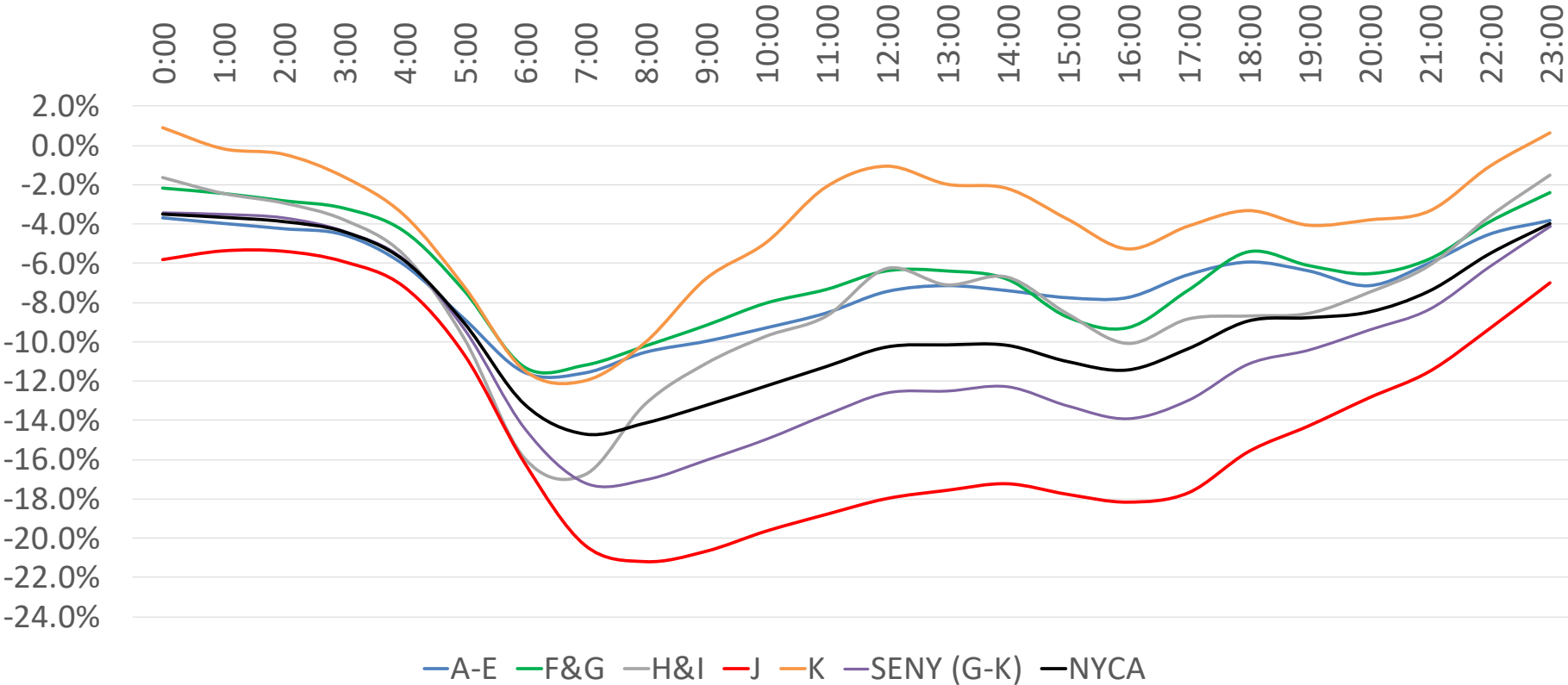
Recent Impacts on Hourly Load Patterns

NYCA/Zone-J Load Profile - Weekday Diurnal Load Changes



Recent Impacts on Hourly Load Patterns (Area)

Average Hourly Deficit by Area - Week of 4/13 - 4/17 (Weekdays)



Recent Impacts on Hourly Load Patterns (Area)

Average Hourly Load Deficit By Area – Week of 4/13-4/17

Hour	A-E	F&G	H&I	J	K	SENY (G-K)	NYCA
0:00	-3.7%	-2.2%	-1.7%	-5.8%	0.9%	-3.4%	-3.5%
1:00	-4.0%	-2.4%	-2.5%	-5.4%	-0.2%	-3.5%	-3.7%
2:00	-4.3%	-2.8%	-3.0%	-5.4%	-0.5%	-3.7%	-3.9%
3:00	-4.6%	-3.2%	-3.8%	-5.9%	-1.6%	-4.4%	-4.4%
4:00	-6.1%	-4.4%	-5.6%	-7.2%	-3.5%	-5.8%	-5.9%
5:00	-8.8%	-7.4%	-9.8%	-10.7%	-7.2%	-9.4%	-9.1%
6:00	-11.6%	-11.3%	-15.9%	-16.2%	-11.5%	-14.4%	-13.2%
7:00	-11.6%	-11.2%	-16.8%	-20.4%	-12.0%	-17.2%	-14.7%
8:00	-10.5%	-10.2%	-13.2%	-21.2%	-10.0%	-17.0%	-14.2%
9:00	-10.0%	-9.2%	-11.1%	-20.7%	-6.8%	-16.0%	-13.3%
10:00	-9.3%	-8.0%	-9.7%	-19.7%	-5.0%	-15.0%	-12.3%
11:00	-8.5%	-7.3%	-8.7%	-18.8%	-2.1%	-13.7%	-11.3%

Recent Impacts on Hourly Load Patterns (Area)

Average Hourly Load Deficit By Area – Week of 4/13-4/17

Hour	A-E	F&G	H&I	J	K	SENY (G-K)	NYCA
12:00	-7.5%	-6.4%	-6.3%	-18.0%	-1.1%	-12.6%	-10.3%
13:00	-7.1%	-6.4%	-7.1%	-17.6%	-2.0%	-12.5%	-10.2%
14:00	-7.4%	-6.8%	-6.7%	-17.2%	-2.2%	-12.3%	-10.2%
15:00	-7.8%	-8.7%	-8.6%	-17.8%	-3.8%	-13.3%	-11.0%
16:00	-7.8%	-9.3%	-10.1%	-18.2%	-5.3%	-13.9%	-11.5%
17:00	-6.6%	-7.4%	-8.8%	-17.7%	-4.1%	-13.0%	-10.4%
18:00	-5.9%	-5.4%	-8.7%	-15.6%	-3.3%	-11.1%	-9.0%
19:00	-6.4%	-6.1%	-8.6%	-14.3%	-4.1%	-10.4%	-8.8%
20:00	-7.2%	-6.5%	-7.5%	-12.9%	-3.8%	-9.4%	-8.5%
21:00	-6.0%	-5.8%	-6.1%	-11.5%	-3.4%	-8.3%	-7.4%
22:00	-4.5%	-3.9%	-3.6%	-9.3%	-1.1%	-6.2%	-5.5%
23:00	-3.8%	-2.4%	-1.5%	-7.0%	0.6%	-4.1%	-4.0%

Recent Impacts on Hourly Load Patterns (Zone)

Hour	A	B	C	D	E	F	G	H	I	J	K
0:00	-6%	-6%	-7%	6%	5%	-3%	-1%	-5%	0%	-6%	1%
1:00	-6%	-7%	-7%	6%	5%	-3%	-1%	-7%	0%	-5%	0%
2:00	-7%	-7%	-7%	5%	4%	-3%	-2%	-8%	-1%	-5%	0%
3:00	-7%	-8%	-8%	6%	4%	-4%	-2%	-8%	-2%	-6%	-2%
4:00	-8%	-9%	-9%	4%	2%	-5%	-4%	-11%	-3%	-7%	-4%
5:00	-10%	-11%	-12%	3%	-3%	-8%	-7%	-17%	-6%	-11%	-7%
6:00	-13%	-13%	-14%	-1%	-7%	-12%	-10%	-23%	-12%	-16%	-11%
7:00	-13%	-13%	-14%	-2%	-7%	-12%	-10%	-20%	-15%	-20%	-12%
8:00	-12%	-13%	-13%	-2%	-4%	-10%	-10%	-15%	-12%	-21%	-10%
9:00	-12%	-13%	-12%	-1%	-3%	-8%	-11%	-11%	-11%	-21%	-7%
10:00	-11%	-11%	-12%	2%	-2%	-6%	-11%	-10%	-10%	-20%	-5%
11:00	-11%	-10%	-12%	3%	-1%	-6%	-10%	-9%	-8%	-19%	-2%
12:00	-9%	-10%	-11%	3%	-1%	-6%	-7%	-7%	-6%	-18%	-1%
13:00	-9%	-9%	-10%	3%	0%	-7%	-6%	-8%	-7%	-18%	-2%
14:00	-9%	-9%	-10%	3%	-2%	-7%	-6%	-8%	-6%	-17%	-2%
15:00	-9%	-10%	-11%	3%	-2%	-9%	-9%	-11%	-7%	-18%	-4%
16:00	-9%	-10%	-11%	2%	-1%	-10%	-9%	-13%	-9%	-18%	-5%
17:00	-8%	-8%	-10%	2%	0%	-8%	-7%	-11%	-8%	-18%	-4%
18:00	-6%	-8%	-10%	2%	1%	-6%	-4%	-13%	-7%	-16%	-3%
19:00	-7%	-8%	-10%	1%	0%	-7%	-5%	-13%	-6%	-14%	-4%
20:00	-8%	-9%	-10%	0%	0%	-8%	-5%	-13%	-5%	-13%	-4%
21:00	-8%	-7%	-9%	2%	2%	-7%	-4%	-12%	-3%	-12%	-3%
22:00	-7%	-6%	-8%	4%	4%	-5%	-2%	-8%	-1%	-9%	-1%
23:00	-6%	-6%	-6%	5%	4%	-4%	-1%	-6%	0%	-7%	1%

Average
Hourly Load
Deficit By
Zone
Week of
4/13-4/17

Our mission, in collaboration with our stakeholders, is to serve the public interest and provide benefit to consumers by:

- Maintaining and enhancing regional reliability
- Operating open, fair and competitive wholesale electricity markets
- Planning the power system for the future
- Providing factual information to policymakers, stakeholders and investors in the power system

