

Estimated Impacts of COVID-19 on NYISO Demand

Analysis through 5/2/2020

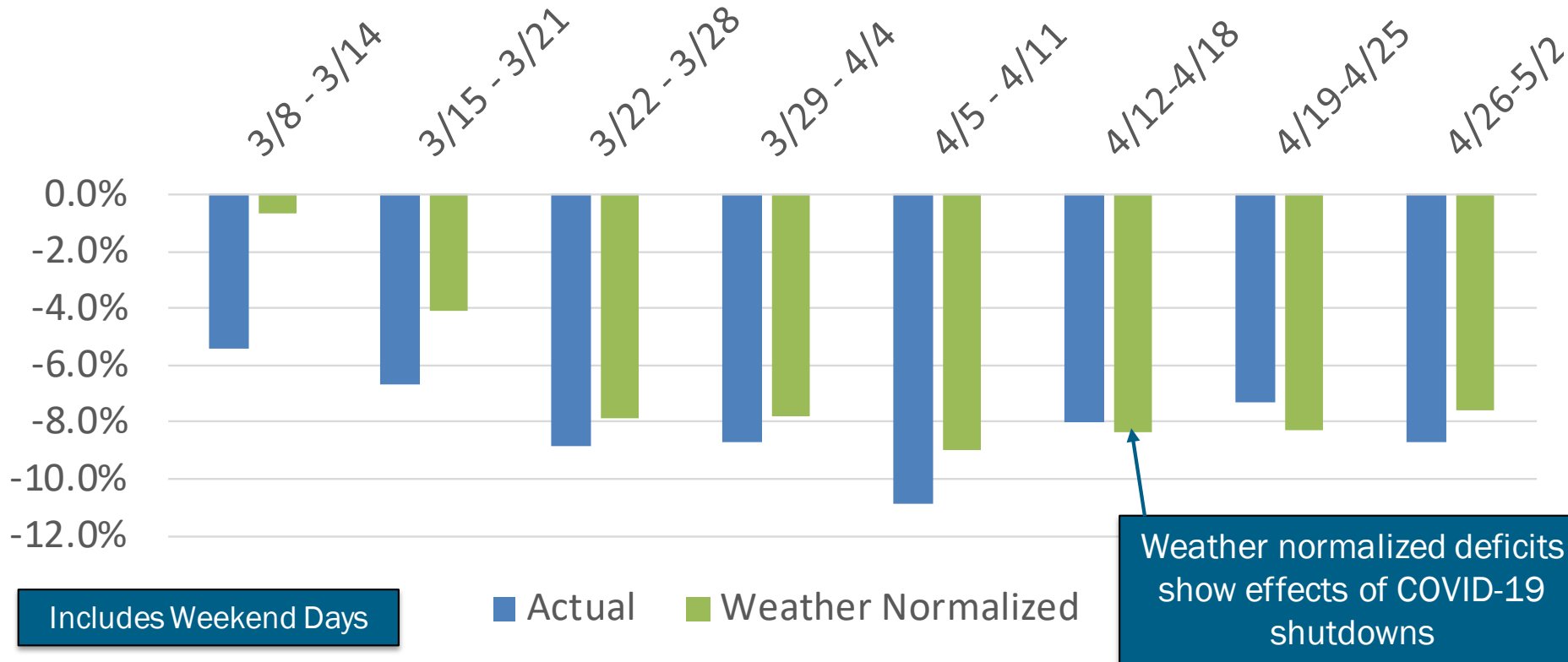
Demand Forecasting & Analysis Team
System Resources and Planning

COVID-19 Tracking Update

May 5, 2020

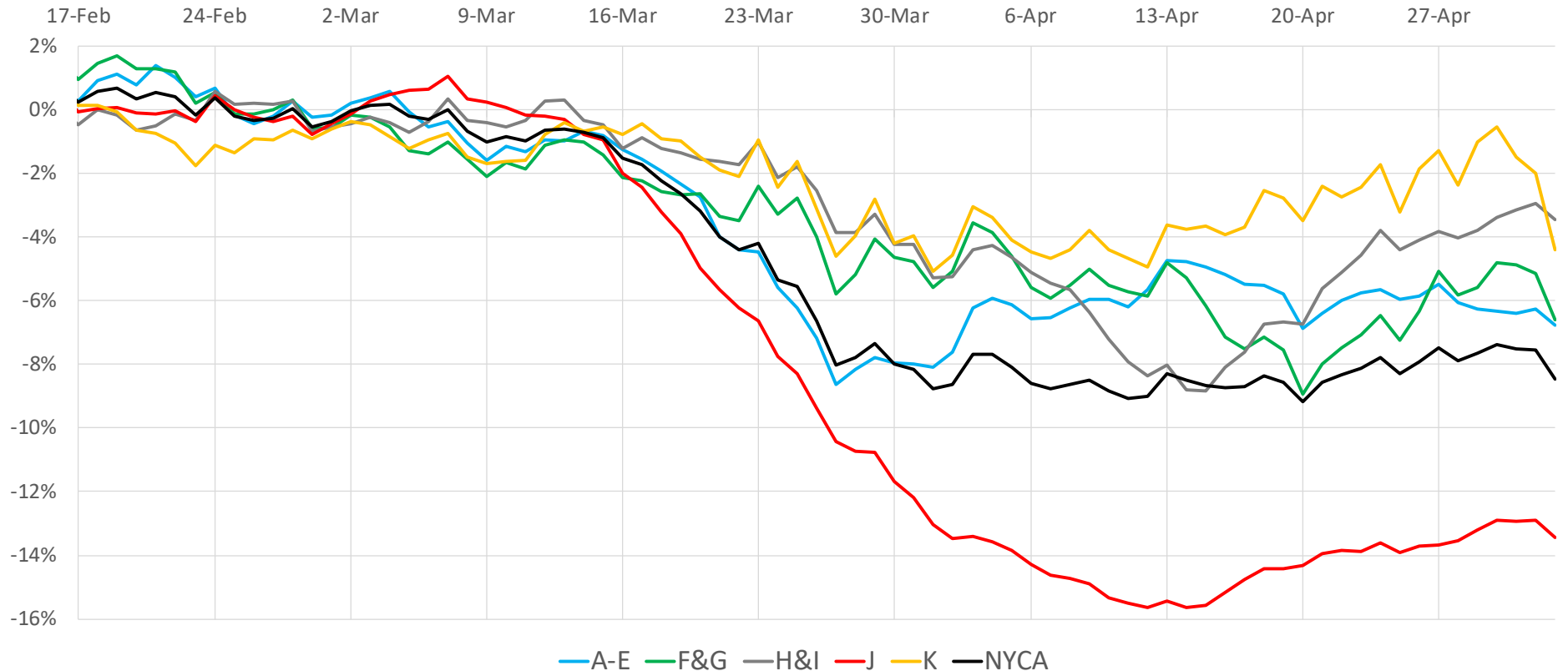
Recent Impacts on Daily Energy by Week

Weekly Energy Use -% Versus Expected (NYCA)



Regional Impacts on Daily Energy Patterns

2020 Weather Normalized Load Relative to Expected Load, 7-Day Moving Average (Daily Energy)

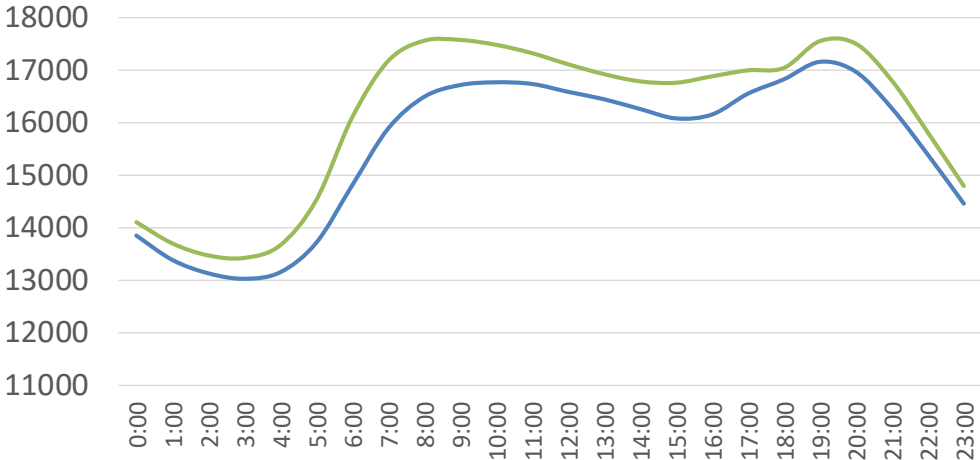


Recent Impacts on Hourly Load Patterns

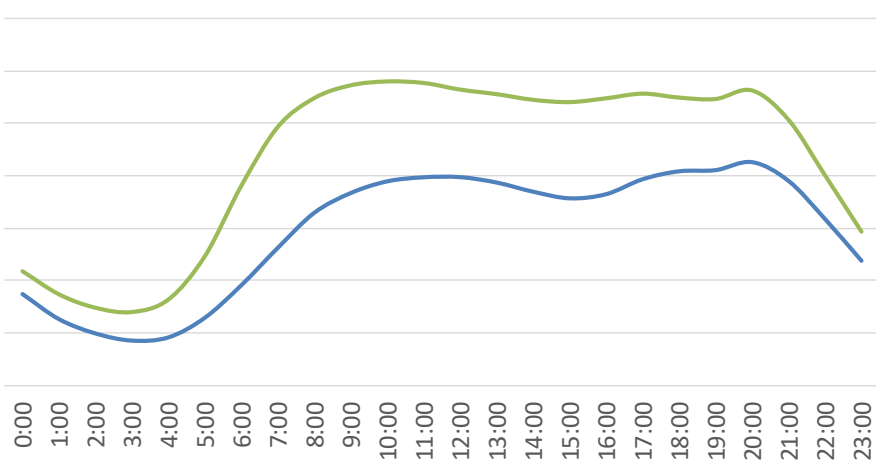
March 16-20 (MW)

— Actual — Simulated

April 27-May 1 (MW)



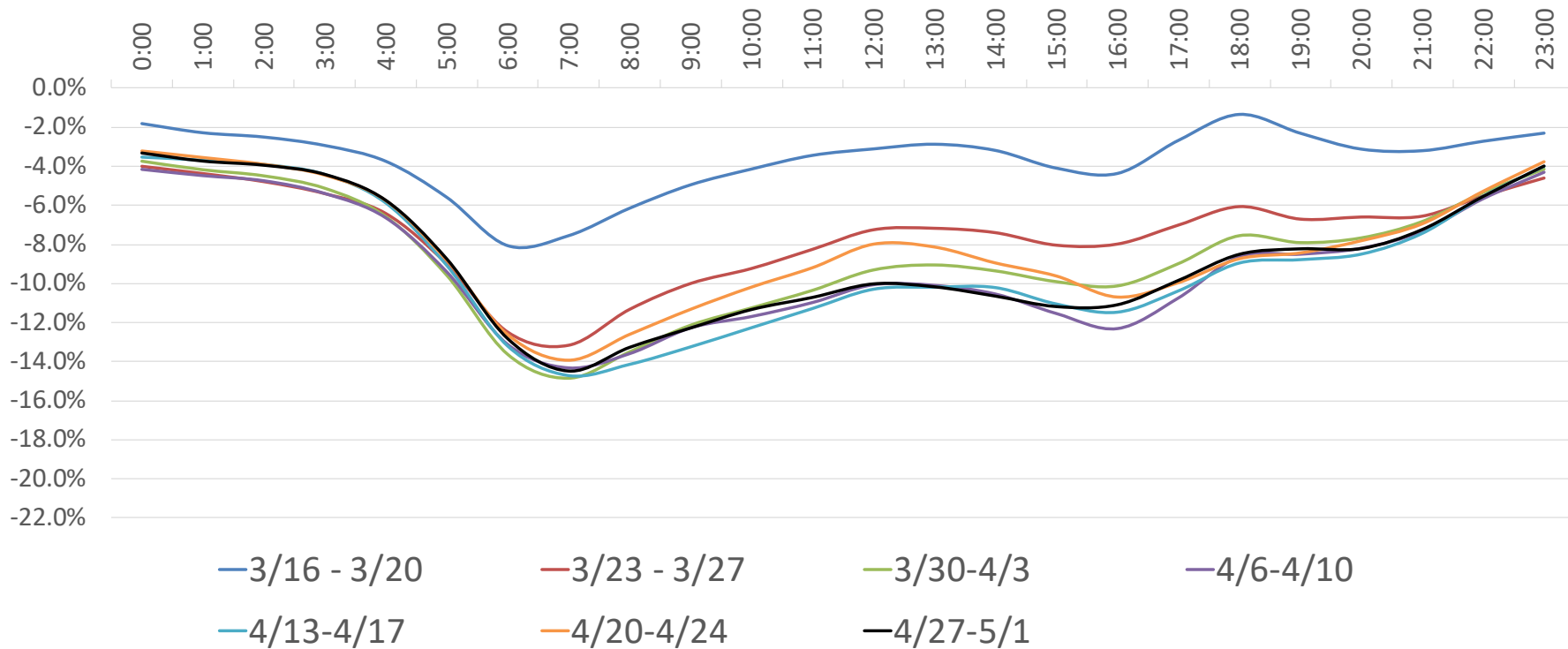
Week 1 of COVID-19 Shutdowns



Week 7

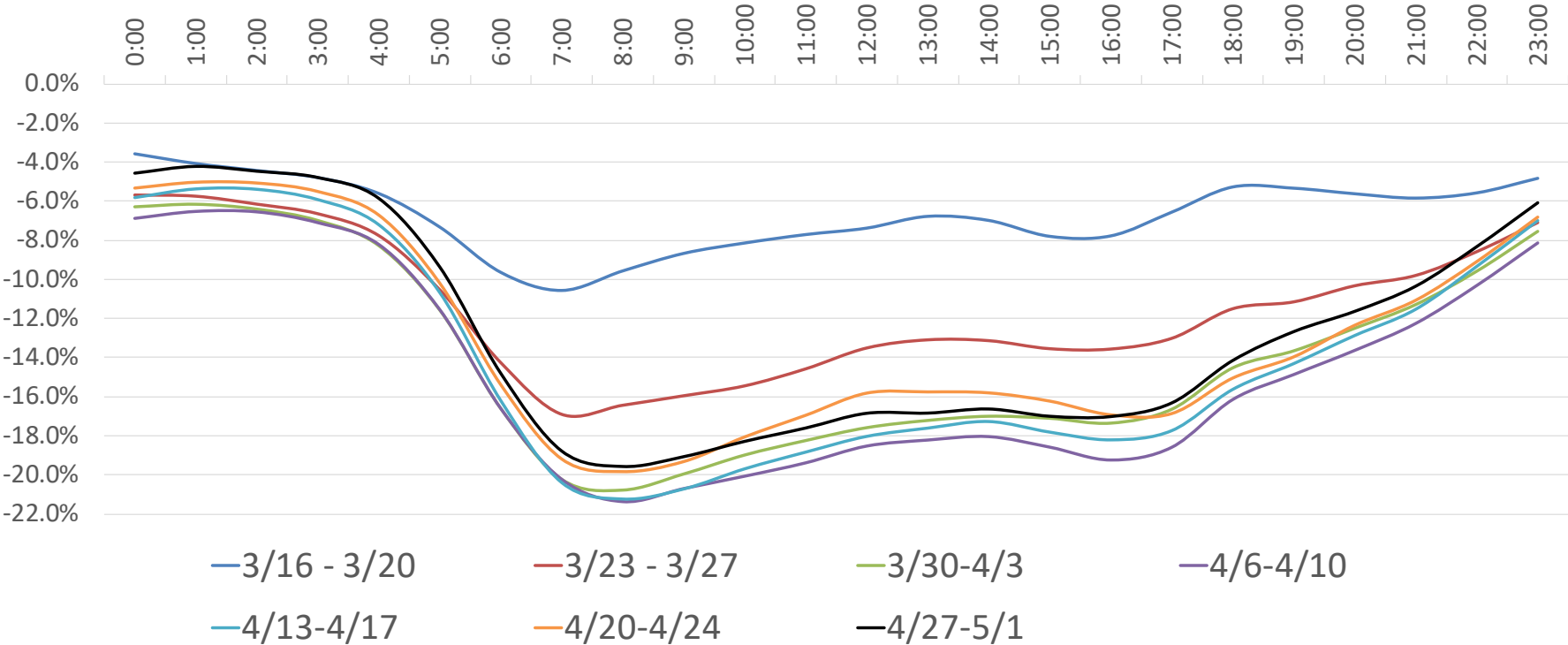
Impacts on Hourly Load Patterns

NYCA Load Profile - Weekday Diurnal Load Changes



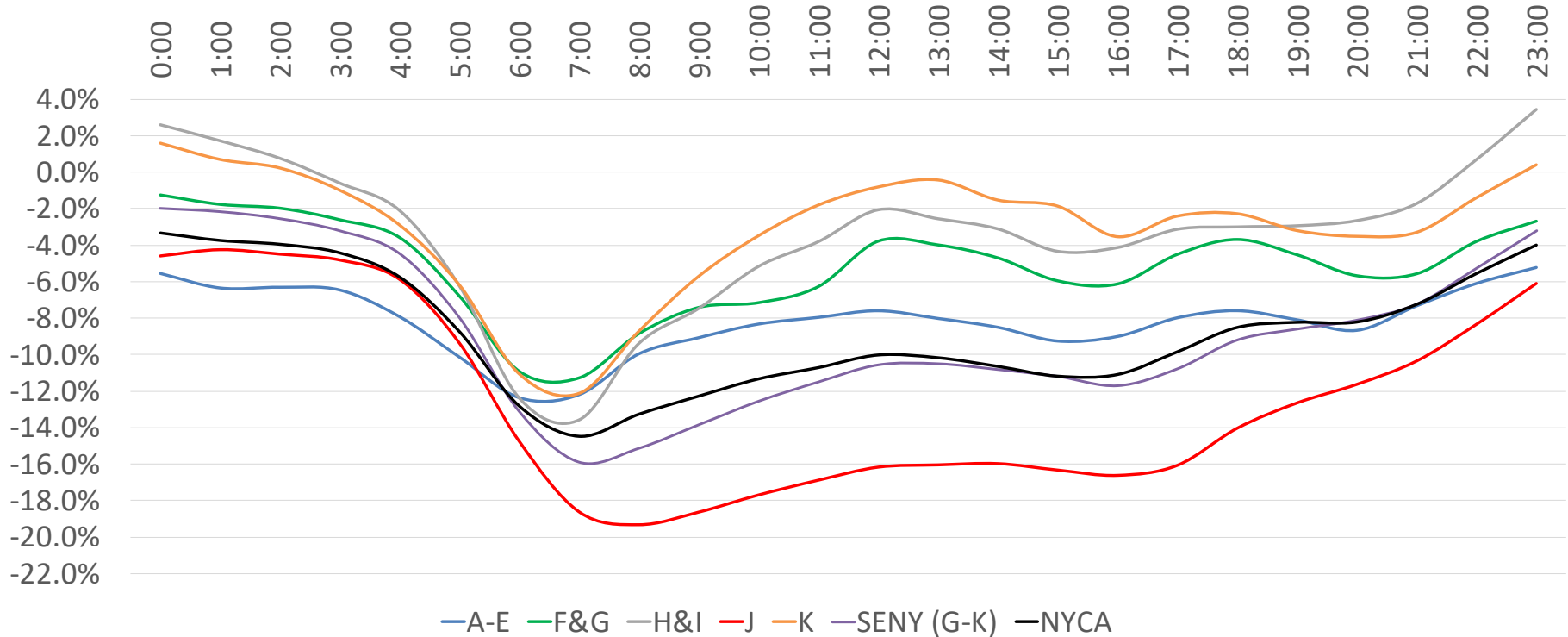
Impacts on Hourly Load Patterns

Zone-J Load Profile - Weekday Diurnal Load Changes



Impacts on Hourly Load Patterns (Area)

Average Hourly Deficit by Area - Week of 4/27 - 5/1 (Weekdays)



Impacts on Hourly Load Patterns (Area)

Hour	A-E	F&G	H&I	J	K	SENY (G-K)	NYCA
0:00	-5.6%	-1.2%	2.6%	-4.6%	1.6%	-2.0%	-3.3%
1:00	-6.4%	-1.8%	1.7%	-4.2%	0.7%	-2.2%	-3.7%
2:00	-6.3%	-2.0%	0.8%	-4.5%	0.2%	-2.6%	-4.0%
3:00	-6.5%	-2.6%	-0.6%	-4.8%	-1.0%	-3.2%	-4.4%
4:00	-7.9%	-3.6%	-2.1%	-5.9%	-2.9%	-4.5%	-5.7%
5:00	-10.1%	-6.8%	-6.2%	-9.4%	-6.2%	-8.0%	-8.7%
6:00	-12.3%	-10.9%	-12.4%	-14.8%	-11.1%	-13.1%	-12.8%
7:00	-12.2%	-11.3%	-13.6%	-18.6%	-12.1%	-15.9%	-14.5%
8:00	-10.0%	-8.8%	-9.4%	-19.3%	-8.7%	-15.1%	-13.3%
9:00	-9.1%	-7.4%	-7.5%	-18.7%	-5.7%	-13.8%	-12.3%
10:00	-8.3%	-7.1%	-5.2%	-17.7%	-3.5%	-12.5%	-11.3%
11:00	-8.0%	-6.3%	-3.8%	-16.9%	-1.8%	-11.5%	-10.7%
12:00	-7.6%	-3.8%	-2.1%	-16.2%	-0.8%	-10.6%	-10.0%
13:00	-8.0%	-4.0%	-2.5%	-16.1%	-0.4%	-10.5%	-10.2%
14:00	-8.5%	-4.7%	-3.1%	-16.0%	-1.5%	-10.8%	-10.6%
15:00	-9.3%	-5.9%	-4.3%	-16.3%	-1.9%	-11.2%	-11.2%
16:00	-9.0%	-6.1%	-4.1%	-16.6%	-3.5%	-11.7%	-11.1%
17:00	-8.0%	-4.5%	-3.1%	-16.1%	-2.4%	-10.8%	-9.8%
18:00	-7.6%	-3.7%	-3.0%	-14.0%	-2.3%	-9.2%	-8.5%
19:00	-8.1%	-4.5%	-2.9%	-12.7%	-3.2%	-8.6%	-8.2%
20:00	-8.7%	-5.7%	-2.6%	-11.6%	-3.5%	-8.1%	-8.2%
21:00	-7.3%	-5.6%	-1.7%	-10.3%	-3.3%	-7.2%	-7.2%
22:00	-6.1%	-3.8%	0.7%	-8.3%	-1.4%	-5.3%	-5.6%
23:00	-5.2%	-2.7%	3.4%	-6.1%	0.4%	-3.2%	-4.0%

Average Hourly
Load Deficit
By Area
Week of
4/27-5/1

Impacts on Hourly Load Patterns (Zone)

Hour	A	B	C	D	E	F	G	H	I	J	K
0:00	-10%	-2%	-8%	-2%	3%	-3%	1%	5%	2%	-5%	2%
1:00	-10%	-3%	-9%	-4%	2%	-3%	0%	3%	1%	-4%	1%
2:00	-10%	-4%	-9%	-3%	3%	-3%	-1%	1%	1%	-4%	0%
3:00	-10%	-5%	-9%	-3%	3%	-3%	-2%	-1%	-1%	-5%	-1%
4:00	-11%	-6%	-10%	-5%	1%	-5%	-2%	-3%	-2%	-6%	-3%
5:00	-13%	-8%	-12%	-6%	-3%	-8%	-6%	-9%	-5%	-9%	-6%
6:00	-15%	-11%	-14%	-9%	-8%	-12%	-9%	-16%	-11%	-15%	-11%
7:00	-16%	-10%	-13%	-9%	-8%	-12%	-10%	-13%	-14%	-19%	-12%
8:00	-14%	-8%	-10%	-9%	-4%	-8%	-9%	-6%	-11%	-19%	-9%
9:00	-14%	-7%	-9%	-6%	-4%	-7%	-8%	-3%	-10%	-19%	-6%
10:00	-13%	-6%	-9%	-4%	-3%	-7%	-8%	0%	-8%	-18%	-3%
11:00	-13%	-5%	-9%	-3%	-2%	-6%	-6%	2%	-6%	-17%	-2%
12:00	-13%	-5%	-9%	-2%	-2%	-3%	-4%	4%	-5%	-16%	-1%
13:00	-13%	-5%	-9%	-2%	-3%	-4%	-5%	3%	-5%	-16%	0%
14:00	-13%	-6%	-9%	-5%	-4%	-4%	-5%	2%	-5%	-16%	-2%
15:00	-13%	-7%	-10%	-5%	-5%	-7%	-5%	0%	-6%	-16%	-2%
16:00	-13%	-7%	-10%	-5%	-4%	-6%	-6%	1%	-7%	-17%	-4%
17:00	-13%	-6%	-8%	-4%	-3%	-5%	-4%	2%	-5%	-16%	-2%
18:00	-12%	-6%	-9%	-3%	-1%	-5%	-2%	0%	-4%	-14%	-2%
19:00	-13%	-6%	-9%	-4%	-1%	-6%	-3%	-1%	-4%	-13%	-3%
20:00	-13%	-7%	-10%	-6%	-2%	-7%	-4%	-3%	-3%	-12%	-4%
21:00	-11%	-5%	-9%	-3%	0%	-7%	-4%	-2%	-2%	-10%	-3%
22:00	-10%	-3%	-8%	-2%	3%	-5%	-2%	2%	0%	-8%	-1%
23:00	-9%	-2%	-7%	-3%	4%	-4%	-1%	7%	2%	-6%	0%

Average Hourly Load Deficit By Zone: Week of 4/27-5/1

Our mission, in collaboration with our stakeholders, is to serve the public interest and provide benefit to consumers by:

- Maintaining and enhancing regional reliability
- Operating open, fair and competitive wholesale electricity markets
- Planning the power system for the future
- Providing factual information to policymakers, stakeholders and investors in the power system

