

Estimated Impacts of COVID-19 on NYISO Load

Analysis through 5/9/2020

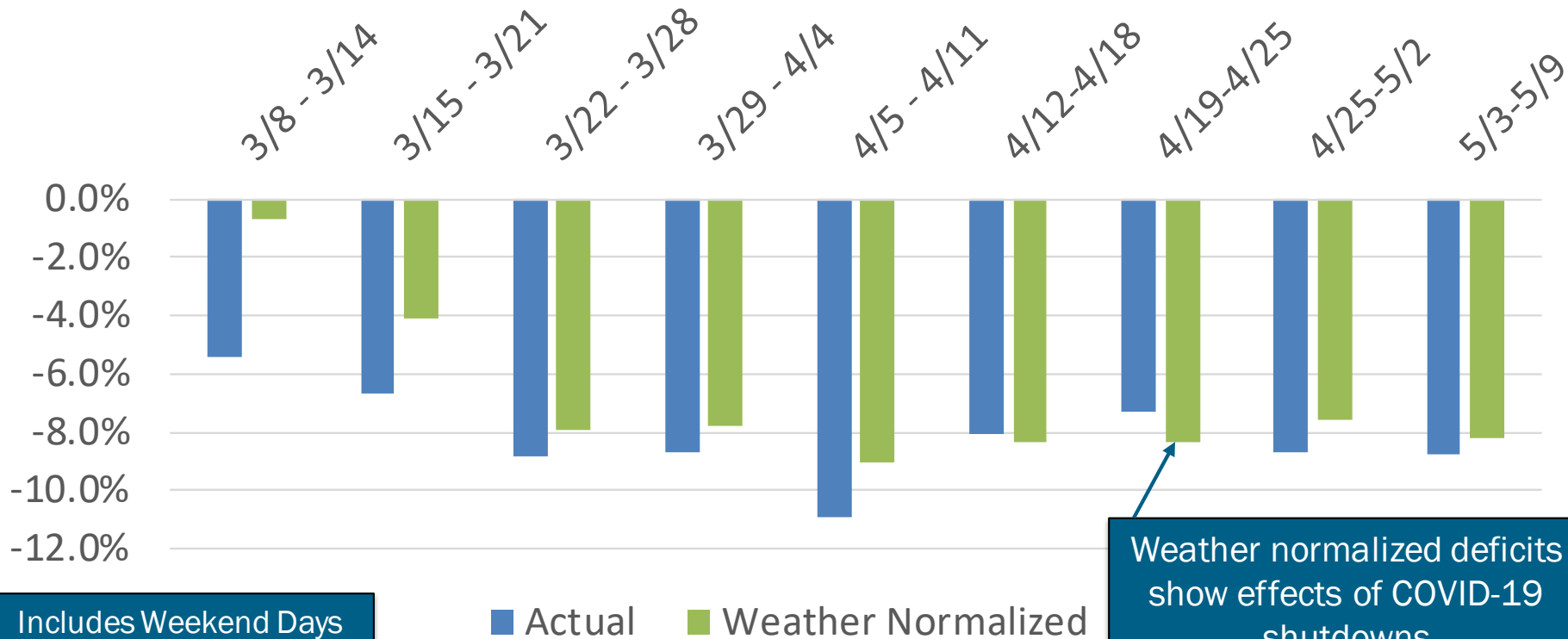
Demand Forecasting & Analysis Team
System Resources and Planning

COVID-19 Tracking Update

May 12, 2020

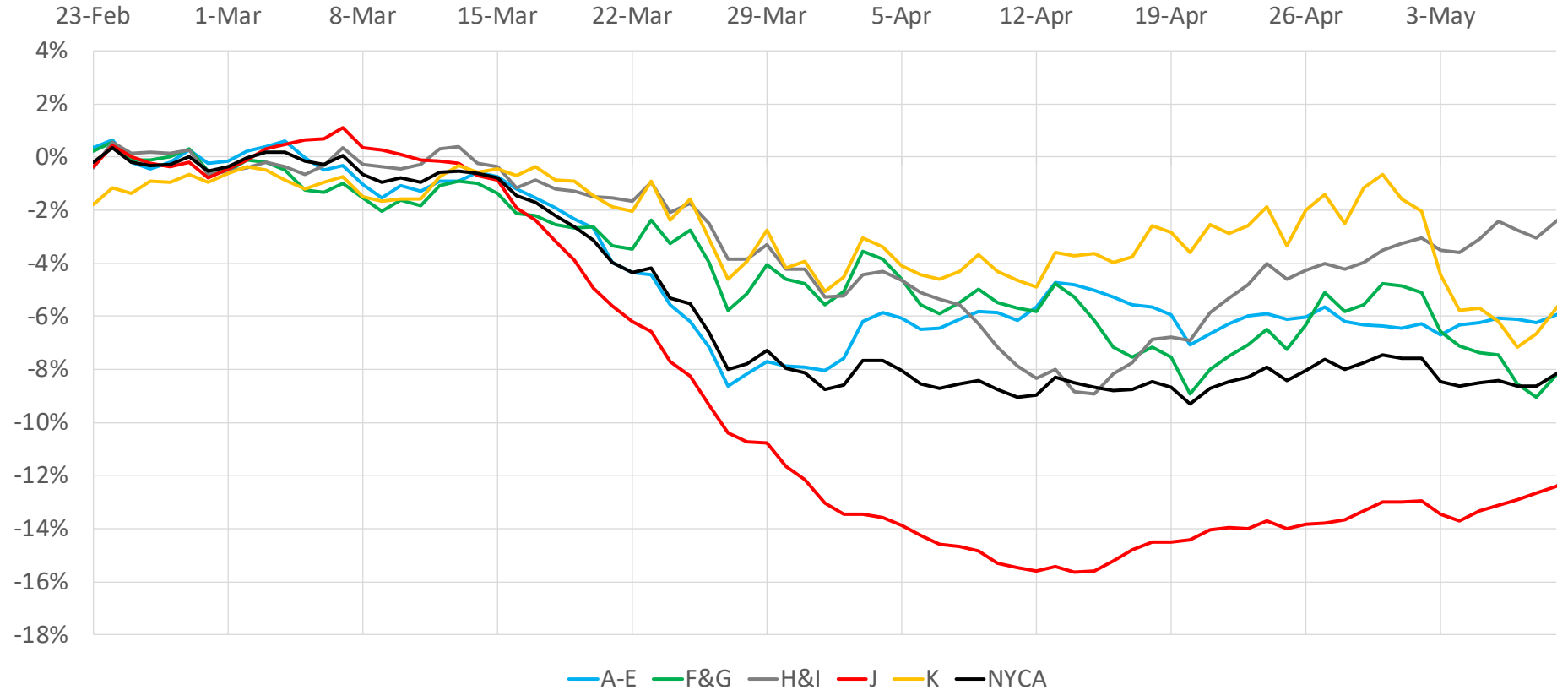
Recent Impacts on Daily Energy by Week

Weekly Energy Use -% Versus Expected (NYCA)



Regional Impacts on Daily Energy Patterns

2020 Weather Normalized Load Relative to Expected Load, 7-Day Moving Average (Daily Energy)

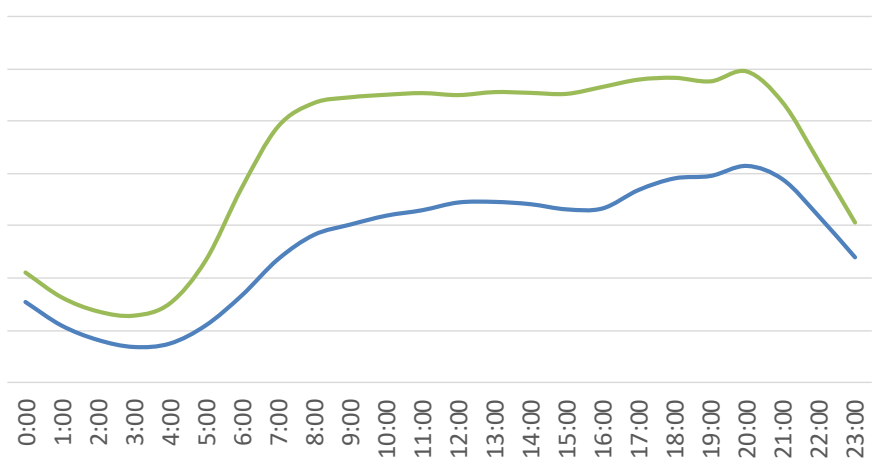
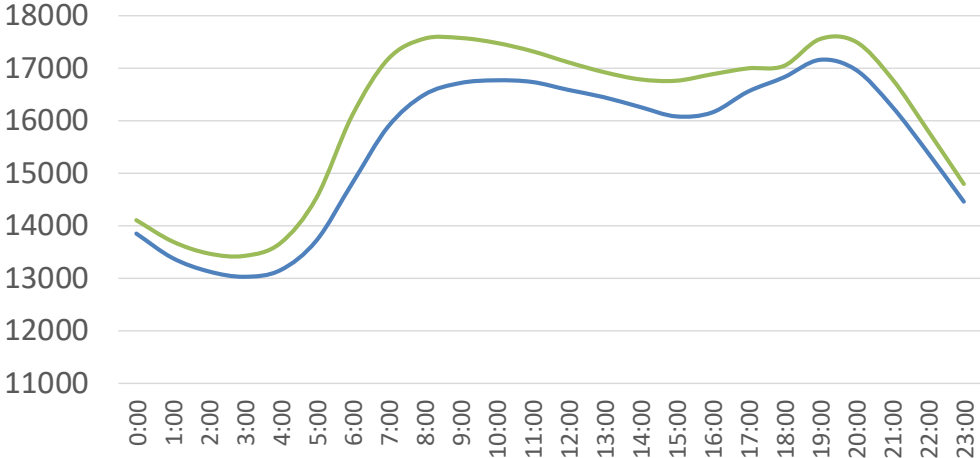


Recent Impacts on Hourly Load Patterns

— Actual — Simulated

March 16-20 (MW)

May 4 - May 8 (MW)

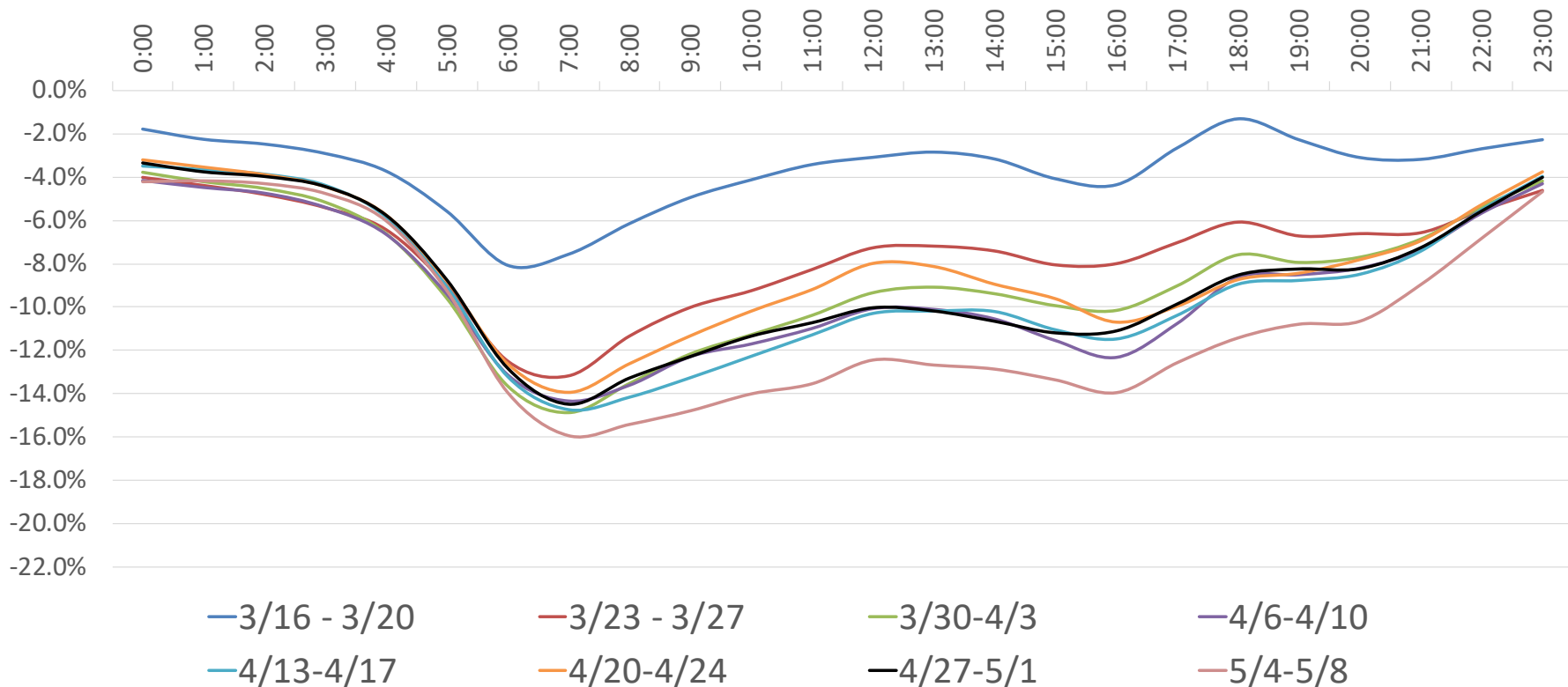


Week 1 of COVID-19 Shutdowns

Week 8

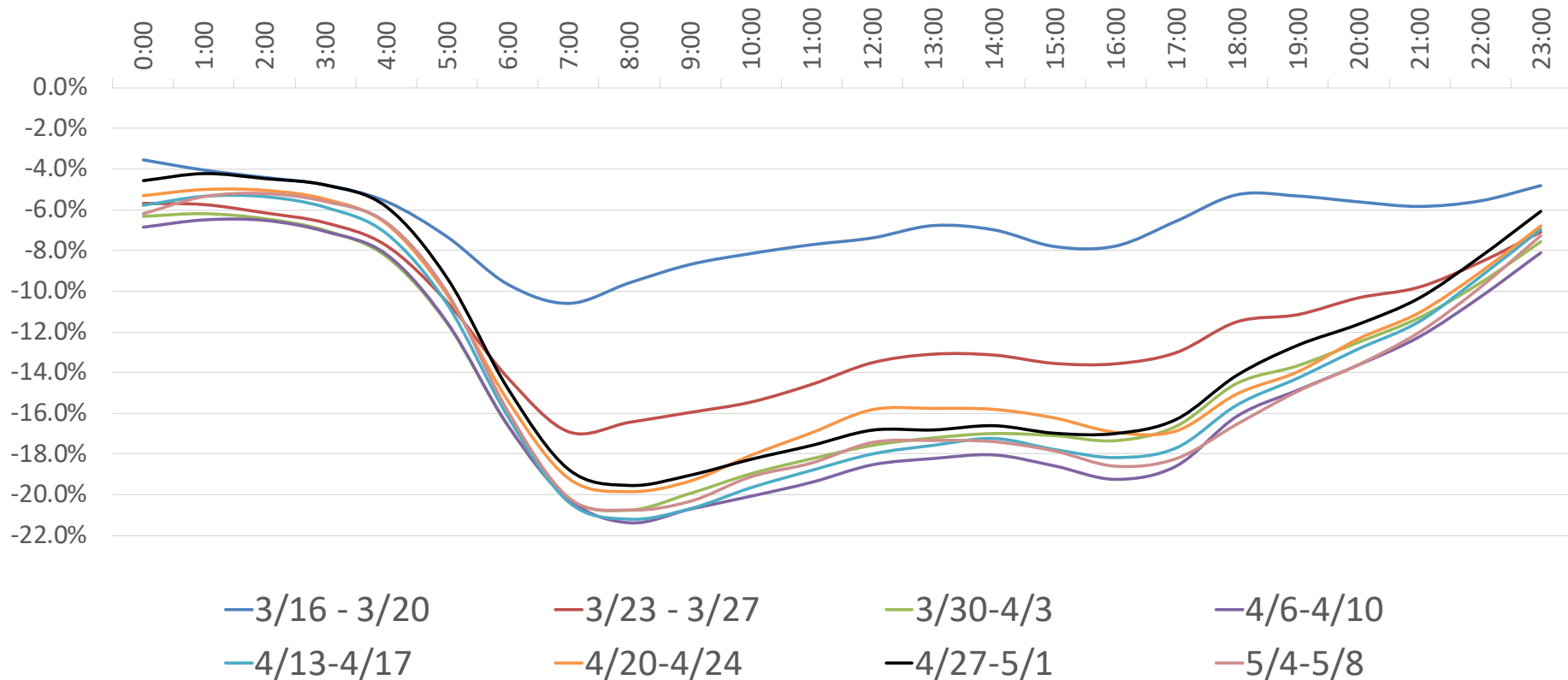
Impacts on Hourly Load Patterns

NYCA Load Profile - Weekday Diurnal Load Changes



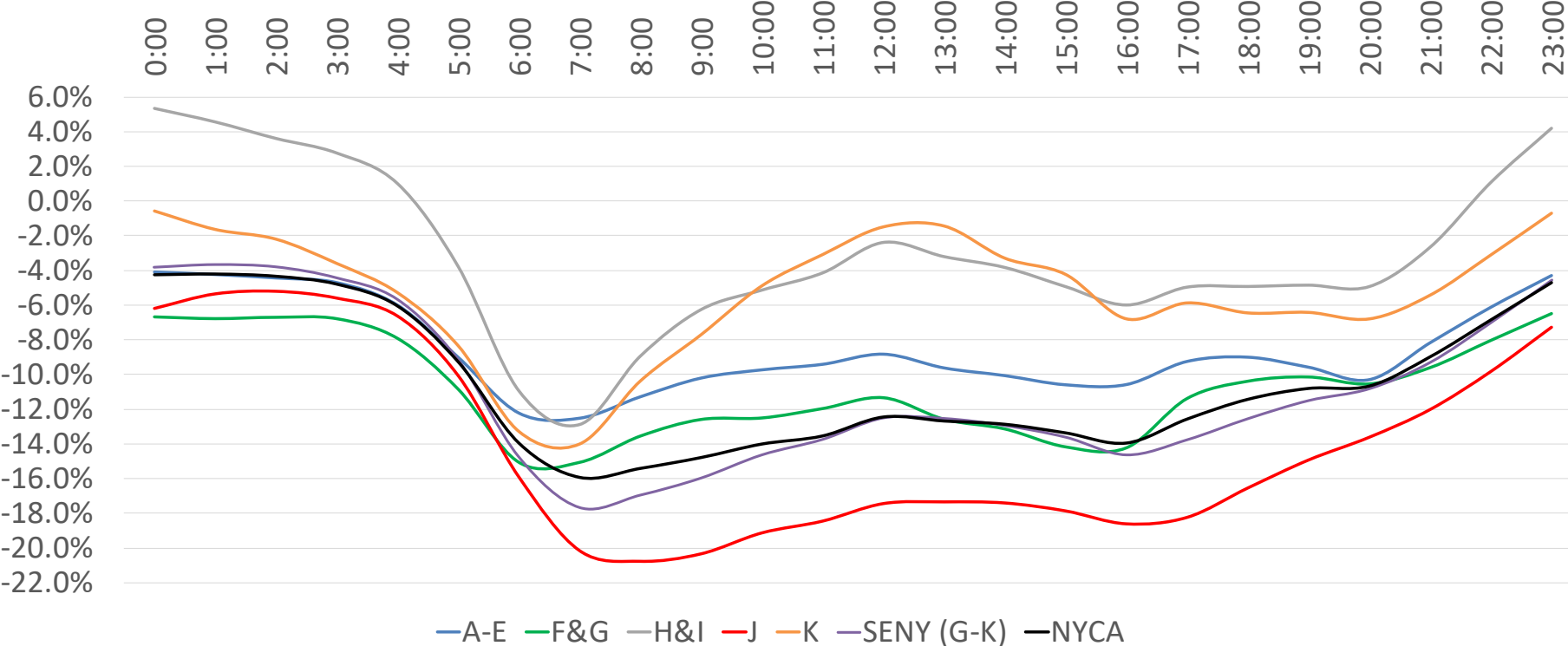
Impacts on Hourly Load Patterns

Zone-J Load Profile - Weekday Diurnal Load Changes



Impacts on Hourly Load Patterns (Area)

Average Hourly Deficit by Area - Week of 5/4 - 5/8 (Weekdays)



Impacts on Hourly Load Patterns (Area)

Hour	A-E	F&G	H&I	J	K	SENY (G-K)	NYCA
0:00	-4.1%	-6.7%	5.4%	-6.2%	-0.6%	-3.8%	-4.2%
1:00	-4.2%	-6.8%	4.6%	-5.3%	-1.6%	-3.7%	-4.2%
2:00	-4.4%	-6.7%	3.6%	-5.2%	-2.2%	-3.8%	-4.3%
3:00	-4.7%	-6.8%	2.8%	-5.6%	-3.6%	-4.4%	-4.8%
4:00	-6.0%	-7.9%	1.0%	-6.6%	-5.3%	-5.7%	-6.0%
5:00	-9.0%	-10.8%	-3.8%	-10.1%	-8.4%	-9.1%	-9.3%
6:00	-12.2%	-15.1%	-10.9%	-15.9%	-13.3%	-14.7%	-13.9%
7:00	-12.5%	-15.1%	-12.9%	-20.2%	-14.0%	-17.7%	-15.9%
8:00	-11.3%	-13.6%	-8.9%	-20.8%	-10.4%	-16.9%	-15.4%
9:00	-10.2%	-12.6%	-6.2%	-20.3%	-7.7%	-16.0%	-14.8%
10:00	-9.7%	-12.5%	-5.1%	-19.1%	-4.9%	-14.6%	-14.0%
11:00	-9.4%	-12.0%	-4.1%	-18.4%	-3.1%	-13.7%	-13.5%
12:00	-8.8%	-11.3%	-2.4%	-17.4%	-1.5%	-12.5%	-12.4%
13:00	-9.6%	-12.6%	-3.2%	-17.3%	-1.4%	-12.5%	-12.7%
14:00	-10.1%	-13.1%	-3.8%	-17.4%	-3.3%	-12.9%	-12.9%
15:00	-10.6%	-14.2%	-4.9%	-17.9%	-4.2%	-13.6%	-13.3%
16:00	-10.6%	-14.2%	-6.0%	-18.6%	-6.8%	-14.6%	-13.9%
17:00	-9.2%	-11.4%	-4.9%	-18.2%	-5.9%	-13.8%	-12.6%
18:00	-9.0%	-10.4%	-4.9%	-16.5%	-6.5%	-12.5%	-11.4%
19:00	-9.6%	-10.1%	-4.8%	-14.9%	-6.4%	-11.5%	-10.8%
20:00	-10.3%	-10.5%	-4.9%	-13.6%	-6.8%	-10.8%	-10.7%
21:00	-8.2%	-9.6%	-2.7%	-12.0%	-5.4%	-9.3%	-9.0%
22:00	-6.1%	-8.0%	1.1%	-9.8%	-3.1%	-7.0%	-6.8%
23:00	-4.3%	-6.5%	4.2%	-7.3%	-0.7%	-4.6%	-4.7%

Average Hourly
Load Deficit
By Area
Week of
5/4 - 5/8

Impacts on Hourly Load Patterns (Zone)

Hour	A	B	C	D	E	F	G	H	I	J	K
0:00	-7%	-2%	-5%	-6%	4%	-8%	-5%	15%	1%	-6%	-1%
1:00	-7%	-2%	-5%	-7%	5%	-8%	-6%	14%	1%	-5%	-2%
2:00	-6%	-3%	-5%	-8%	4%	-7%	-6%	13%	0%	-5%	-2%
3:00	-7%	-3%	-5%	-7%	3%	-7%	-6%	12%	-1%	-6%	-4%
4:00	-8%	-4%	-7%	-10%	2%	-9%	-7%	11%	-3%	-7%	-5%
5:00	-11%	-8%	-10%	-9%	-3%	-11%	-10%	3%	-7%	-10%	-8%
6:00	-14%	-11%	-13%	-11%	-9%	-15%	-15%	-5%	-14%	-16%	-13%
7:00	-15%	-12%	-13%	-13%	-8%	-15%	-15%	-4%	-17%	-20%	-14%
8:00	-14%	-10%	-11%	-13%	-5%	-12%	-15%	1%	-13%	-21%	-10%
9:00	-13%	-9%	-11%	-11%	-3%	-11%	-14%	5%	-11%	-20%	-8%
10:00	-13%	-9%	-11%	-9%	-3%	-11%	-15%	6%	-10%	-19%	-5%
11:00	-12%	-8%	-10%	-8%	-4%	-10%	-14%	6%	-9%	-18%	-3%
12:00	-12%	-8%	-10%	-7%	-3%	-10%	-13%	8%	-7%	-17%	-1%
13:00	-12%	-8%	-11%	-8%	-5%	-12%	-14%	5%	-7%	-17%	-1%
14:00	-12%	-8%	-11%	-9%	-5%	-13%	-14%	4%	-7%	-17%	-3%
15:00	-13%	-9%	-12%	-10%	-6%	-13%	-15%	2%	-8%	-18%	-4%
16:00	-13%	-9%	-11%	-10%	-6%	-14%	-15%	2%	-9%	-19%	-7%
17:00	-12%	-8%	-10%	-9%	-4%	-11%	-12%	3%	-9%	-18%	-6%
18:00	-12%	-8%	-10%	-8%	-3%	-11%	-10%	2%	-8%	-17%	-6%
19:00	-12%	-9%	-10%	-9%	-3%	-10%	-10%	1%	-8%	-15%	-6%
20:00	-13%	-10%	-12%	-10%	-3%	-11%	-10%	-1%	-7%	-14%	-7%
21:00	-11%	-7%	-10%	-8%	-1%	-10%	-9%	2%	-5%	-12%	-5%
22:00	-9%	-4%	-8%	-6%	2%	-9%	-7%	8%	-2%	-10%	-3%
23:00	-7%	-2%	-5%	-5%	3%	-7%	-5%	12%	1%	-7%	-1%

Average Hourly Load Deficit By Zone: Week of 5/4 - 5/8

Our mission, in collaboration with our stakeholders, is to serve the public interest and provide benefit to consumers by:

- Maintaining and enhancing regional reliability
- Operating open, fair and competitive wholesale electricity markets
- Planning the power system for the future
- Providing factual information to policymakers, stakeholders and investors in the power system

