

# Estimated Impacts of COVID-19 on NYISO Load

Analysis through 5/16/2020

---

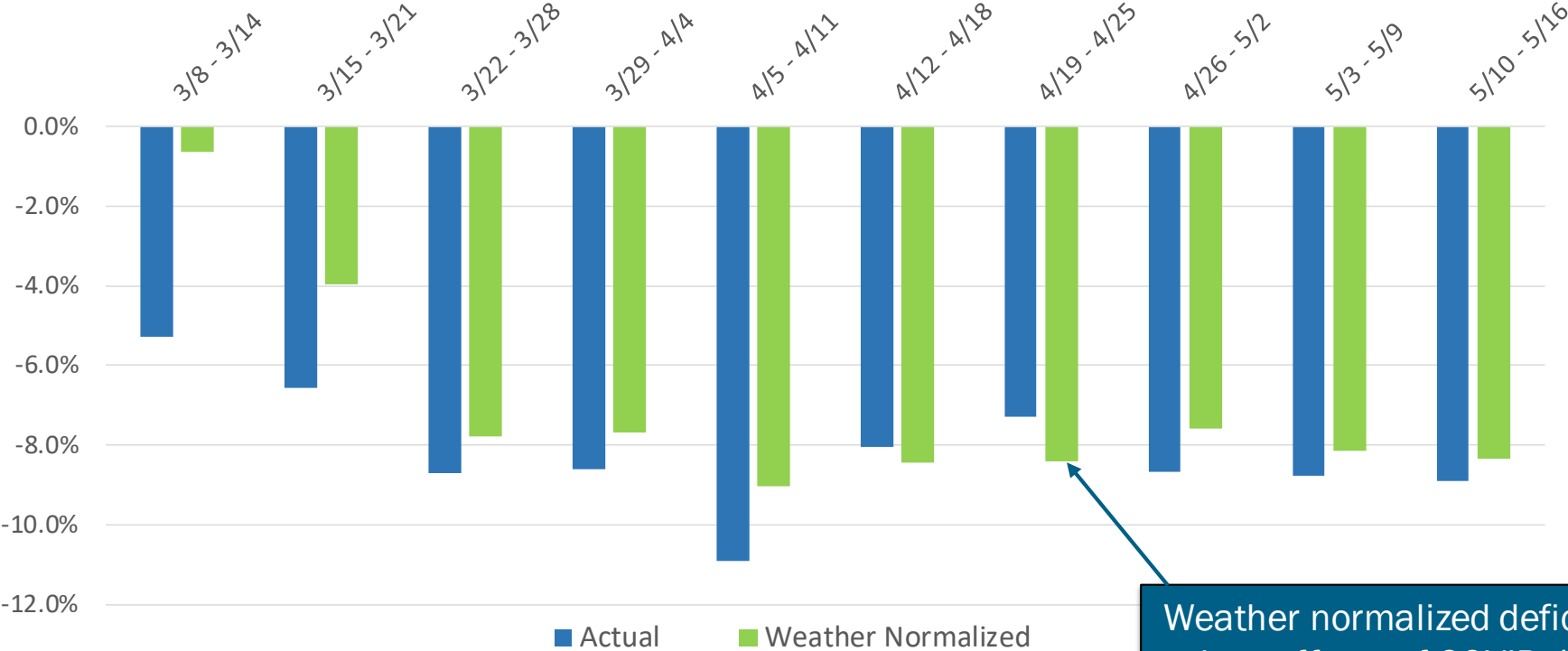
Demand Forecasting & Analysis Team  
System & Resource Planning

**COVID-19 Tracking Update**

May 19, 2020

# Recent Impacts on Daily Energy by Week

Weekly Energy Use - % Versus Expected (NYCA)

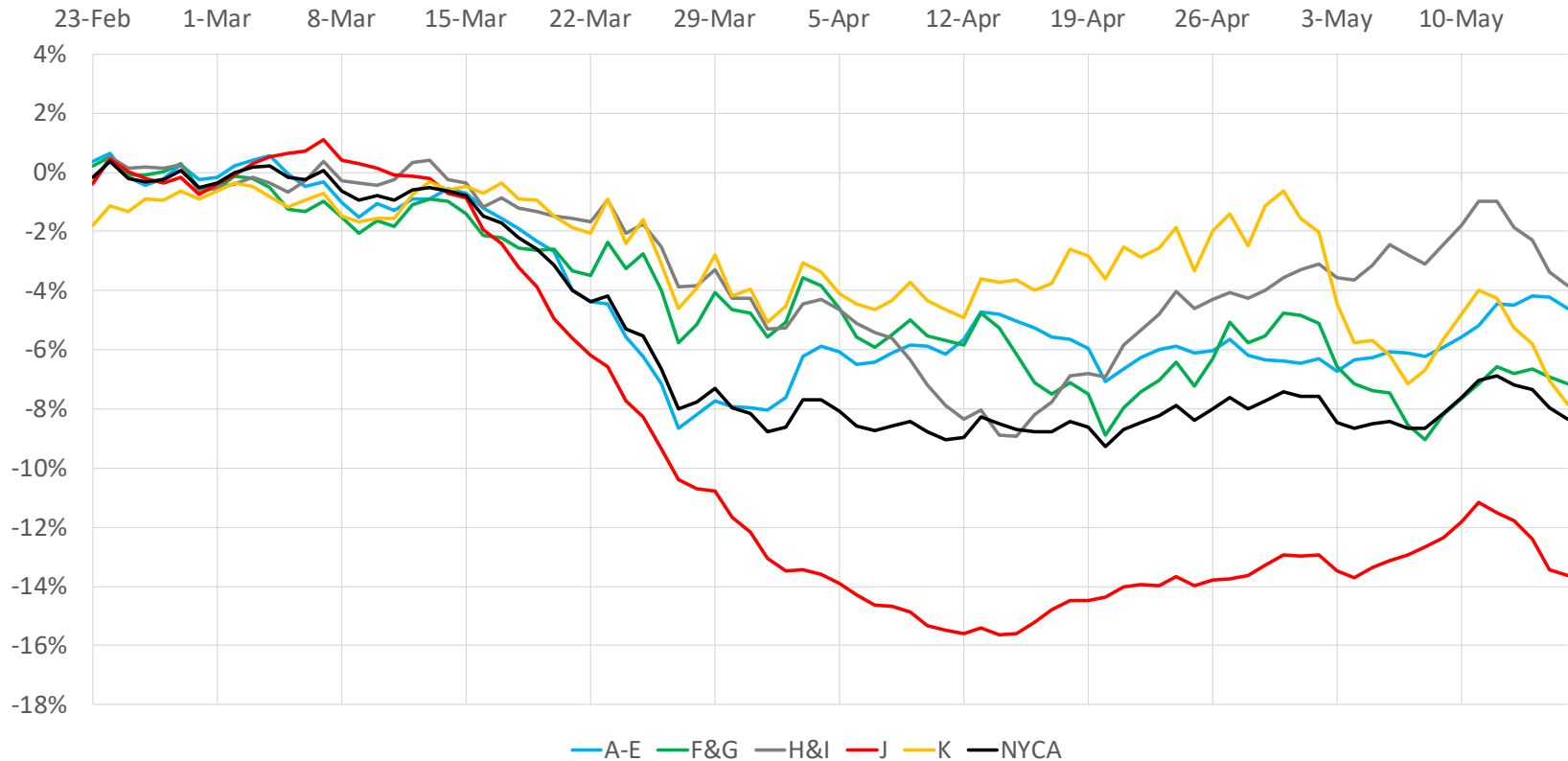


Includes Weekend Days

Weather normalized deficits show effects of COVID-19 shutdowns

# Regional Impacts on Daily Energy Patterns

2020 Weather Normalized Load Relative to Expected Load, 7-Day Moving Average (Daily Energy)

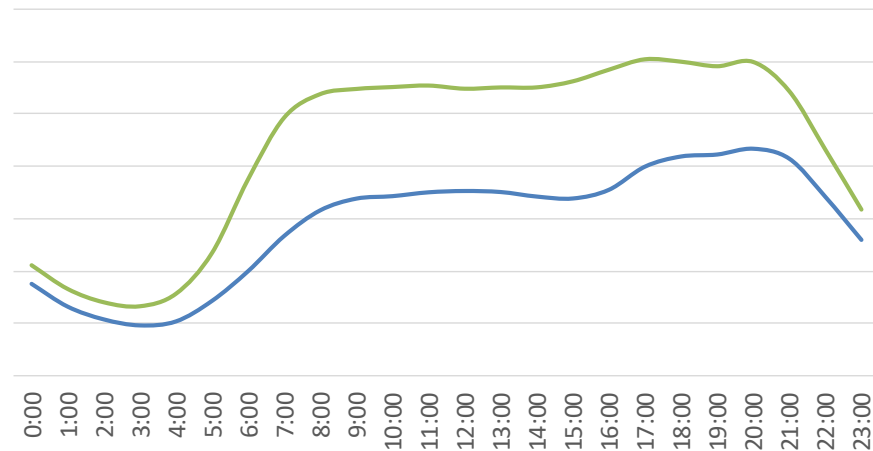
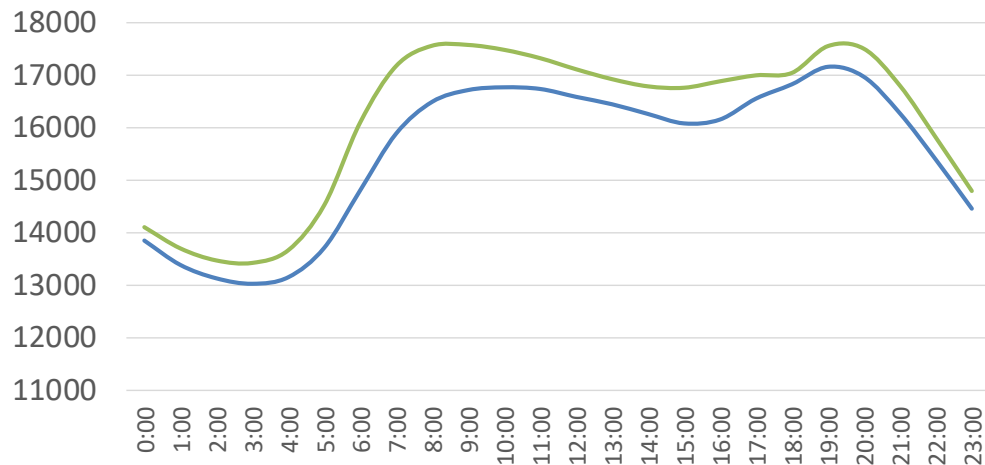


# Recent Impacts on Hourly Load Patterns

— Actual — Simulated

### March 16-20 (MW)

### May 11 - May 15 (MW)

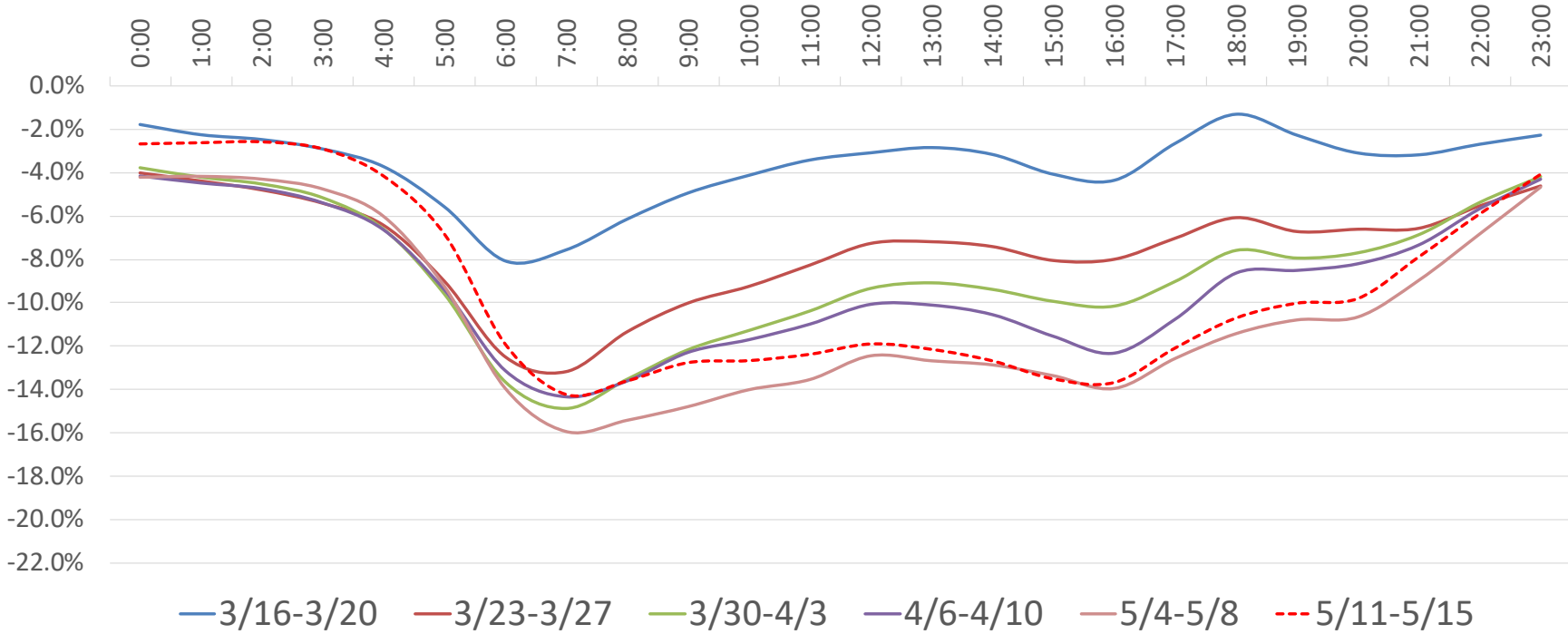


Week 1 of COVID-19 Shutdowns

Week 9

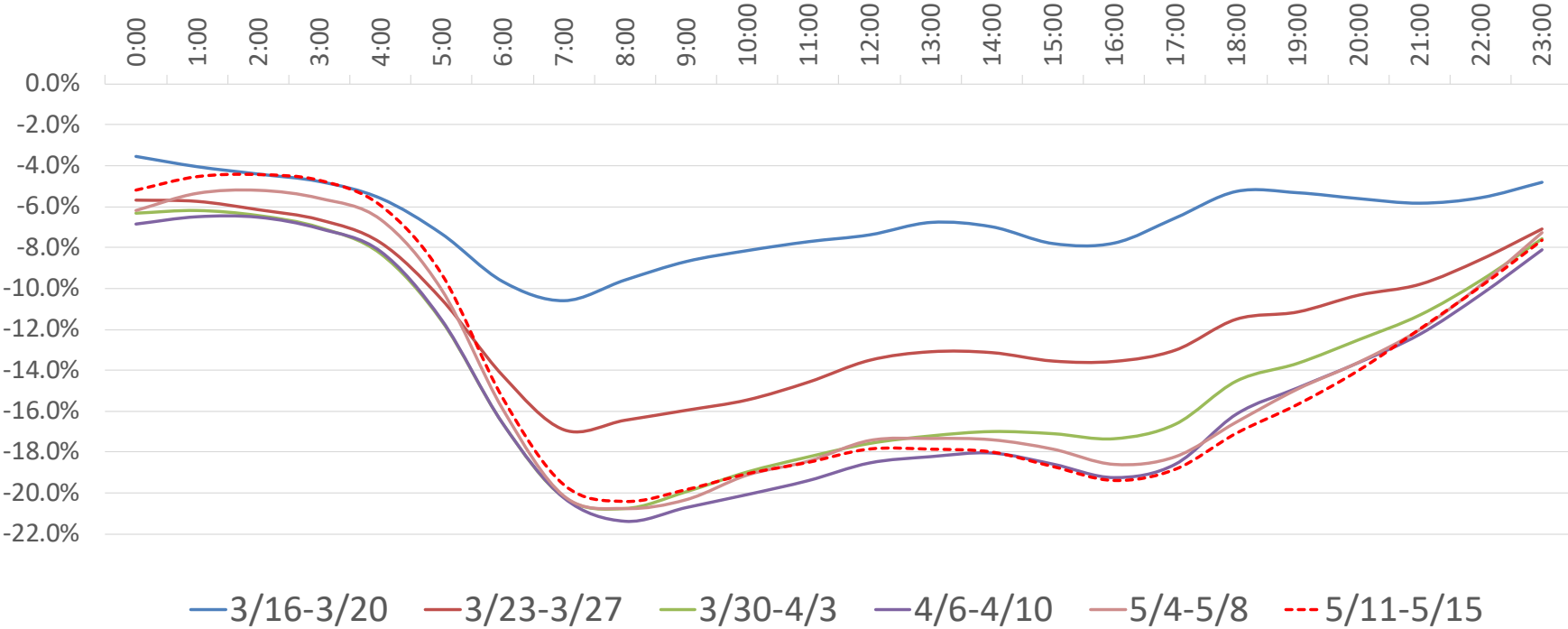
# Impacts on Hourly Load Patterns

NYCA Load Profile - Weekday Diurnal Load Changes



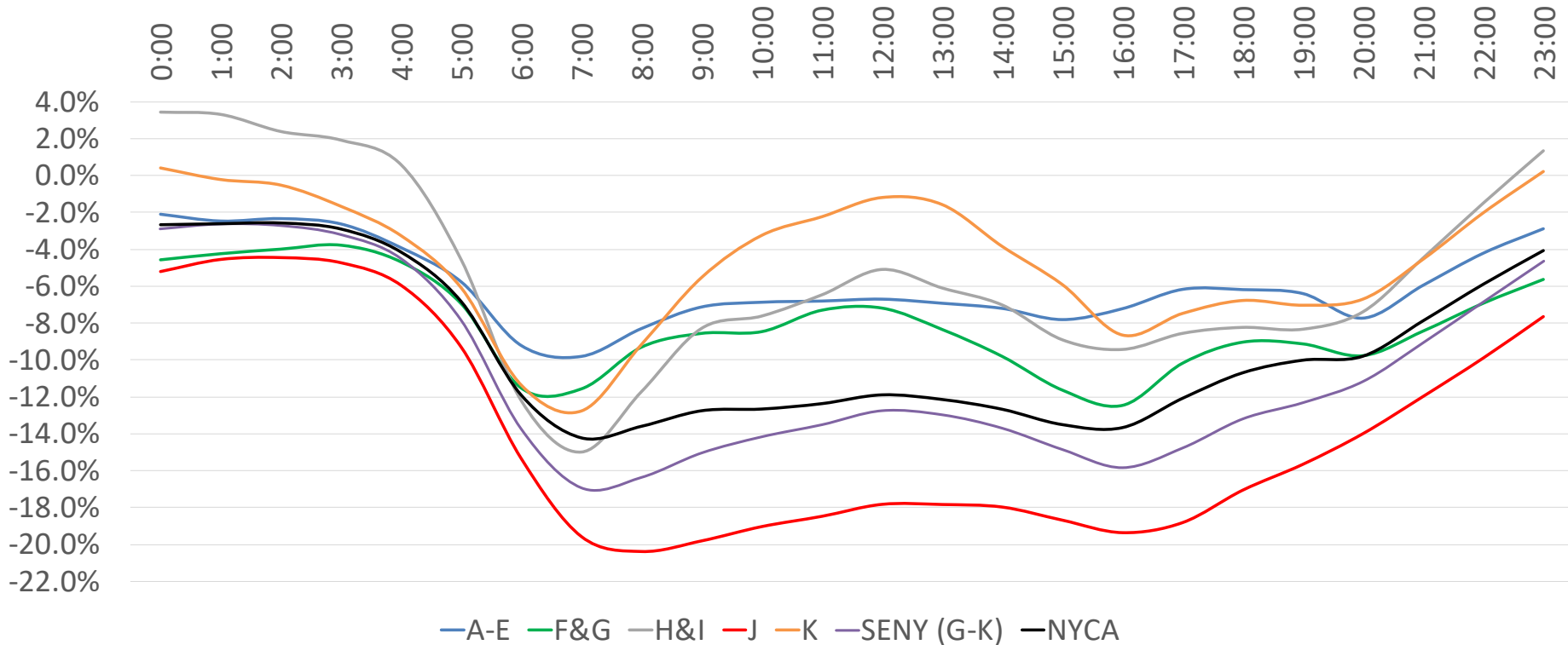
# Impacts on Hourly Load Patterns

Zone-J Load Profile - Weekday Diurnal Load Changes



# Impacts on Hourly Load Patterns (Area)

Average Hourly Deficit by Area - Week of 5/11 - 5/15 (Weekdays)



# Impacts on Hourly Load Patterns (Area)

Hour	A-E	F&G	H&I	J	K	SENY (G-K)	NYCA
0:00	-2.1%	-4.6%	3.4%	-5.2%	0.4%	-2.9%	-2.7%
1:00	-2.5%	-4.3%	3.3%	-4.6%	-0.2%	-2.6%	-2.6%
2:00	-2.4%	-4.0%	2.4%	-4.5%	-0.5%	-2.7%	-2.6%
3:00	-2.6%	-3.8%	1.9%	-4.7%	-1.7%	-3.2%	-2.9%
4:00	-3.9%	-4.7%	0.6%	-6.0%	-3.3%	-4.5%	-4.2%
5:00	-5.8%	-7.0%	-4.6%	-9.3%	-6.1%	-7.8%	-6.8%
6:00	-9.2%	-11.5%	-12.2%	-15.4%	-11.4%	-13.7%	-11.9%
7:00	-9.8%	-11.6%	-15.0%	-19.6%	-12.8%	-16.9%	-14.2%
8:00	-8.3%	-9.3%	-11.7%	-20.4%	-9.2%	-16.4%	-13.6%
9:00	-7.1%	-8.6%	-8.3%	-19.8%	-5.5%	-15.0%	-12.8%
10:00	-6.9%	-8.5%	-7.6%	-19.0%	-3.3%	-14.2%	-12.7%
11:00	-6.8%	-7.3%	-6.5%	-18.5%	-2.2%	-13.5%	-12.4%
12:00	-6.7%	-7.2%	-5.1%	-17.8%	-1.2%	-12.7%	-11.9%
13:00	-6.9%	-8.4%	-6.1%	-17.8%	-1.6%	-13.0%	-12.2%
14:00	-7.2%	-9.8%	-7.0%	-18.0%	-3.9%	-13.7%	-12.7%
15:00	-7.8%	-11.6%	-8.9%	-18.7%	-5.9%	-14.8%	-13.5%
16:00	-7.2%	-12.5%	-9.4%	-19.4%	-8.7%	-15.8%	-13.7%
17:00	-6.2%	-10.2%	-8.6%	-18.8%	-7.5%	-14.8%	-12.1%
18:00	-6.2%	-9.1%	-8.2%	-17.1%	-6.8%	-13.2%	-10.7%
19:00	-6.4%	-9.1%	-8.3%	-15.7%	-7.0%	-12.3%	-10.0%
20:00	-7.7%	-9.8%	-7.4%	-14.0%	-6.7%	-11.1%	-9.8%
21:00	-6.0%	-8.5%	-4.5%	-12.0%	-4.5%	-9.1%	-7.9%
22:00	-4.2%	-6.9%	-1.5%	-9.9%	-2.0%	-6.8%	-5.9%
23:00	-2.9%	-5.7%	1.3%	-7.7%	0.2%	-4.6%	-4.1%

Average Hourly  
Load Deficit  
By Area  
Week of  
5/11 - 5/15



# Impacts on Hourly Load Patterns (Zone)

Hour	A	B	C	D	E	F	G	H	I	J	K
0:00	-6%	-2%	-1%	-4%	7%	-6%	-2%	6%	2%	-5%	0%
1:00	-6%	-2%	-2%	-6%	7%	-6%	-2%	5%	3%	-5%	0%
2:00	-6%	-2%	-2%	-6%	9%	-5%	-2%	4%	2%	-4%	-1%
3:00	-6%	-3%	-2%	-6%	7%	-5%	-3%	4%	1%	-5%	-2%
4:00	-7%	-4%	-3%	-8%	6%	-5%	-4%	3%	-1%	-6%	-3%
5:00	-8%	-7%	-5%	-8%	3%	-7%	-7%	-3%	-5%	-9%	-6%
6:00	-11%	-10%	-9%	-10%	-4%	-12%	-11%	-11%	-13%	-15%	-11%
7:00	-12%	-11%	-9%	-13%	-4%	-11%	-12%	-11%	-17%	-20%	-13%
8:00	-11%	-9%	-8%	-11%	0%	-8%	-11%	-8%	-14%	-20%	-9%
9:00	-10%	-8%	-7%	-9%	2%	-7%	-11%	-3%	-11%	-20%	-6%
10:00	-10%	-8%	-7%	-7%	3%	-7%	-11%	-2%	-10%	-19%	-3%
11:00	-10%	-7%	-7%	-6%	2%	-5%	-10%	-2%	-9%	-18%	-2%
12:00	-9%	-7%	-8%	-5%	3%	-5%	-10%	-2%	-7%	-18%	-1%
13:00	-9%	-7%	-9%	-6%	1%	-7%	-11%	-3%	-7%	-18%	-2%
14:00	-9%	-8%	-9%	-6%	0%	-8%	-12%	-5%	-8%	-18%	-4%
15:00	-9%	-7%	-9%	-7%	-1%	-10%	-14%	-8%	-10%	-19%	-6%
16:00	-8%	-7%	-8%	-8%	-2%	-11%	-15%	-6%	-11%	-19%	-9%
17:00	-8%	-6%	-7%	-8%	1%	-9%	-12%	-5%	-10%	-19%	-7%
18:00	-9%	-6%	-6%	-6%	1%	-9%	-10%	-6%	-10%	-17%	-7%
19:00	-10%	-7%	-6%	-7%	2%	-9%	-9%	-7%	-9%	-16%	-7%
20:00	-11%	-8%	-8%	-9%	0%	-10%	-9%	-6%	-8%	-14%	-7%
21:00	-9%	-6%	-6%	-6%	2%	-9%	-7%	-3%	-5%	-12%	-5%
22:00	-7%	-4%	-5%	-4%	4%	-8%	-5%	0%	-2%	-10%	-2%
23:00	-5%	-3%	-3%	-3%	5%	-7%	-3%	4%	0%	-8%	0%

Average Hourly Load Deficit by Zone - Week of 5/11 - 5/15

# Our mission, in collaboration with our stakeholders, is to serve the public interest and provide benefit to consumers by:

- Maintaining and enhancing regional reliability
- Operating open, fair and competitive wholesale electricity markets
- Planning the power system for the future
- Providing factual information to policymakers, stakeholders and investors in the power system

