

Estimated Impacts of COVID-19 on NYISO Load

Analysis through 5/23/2020

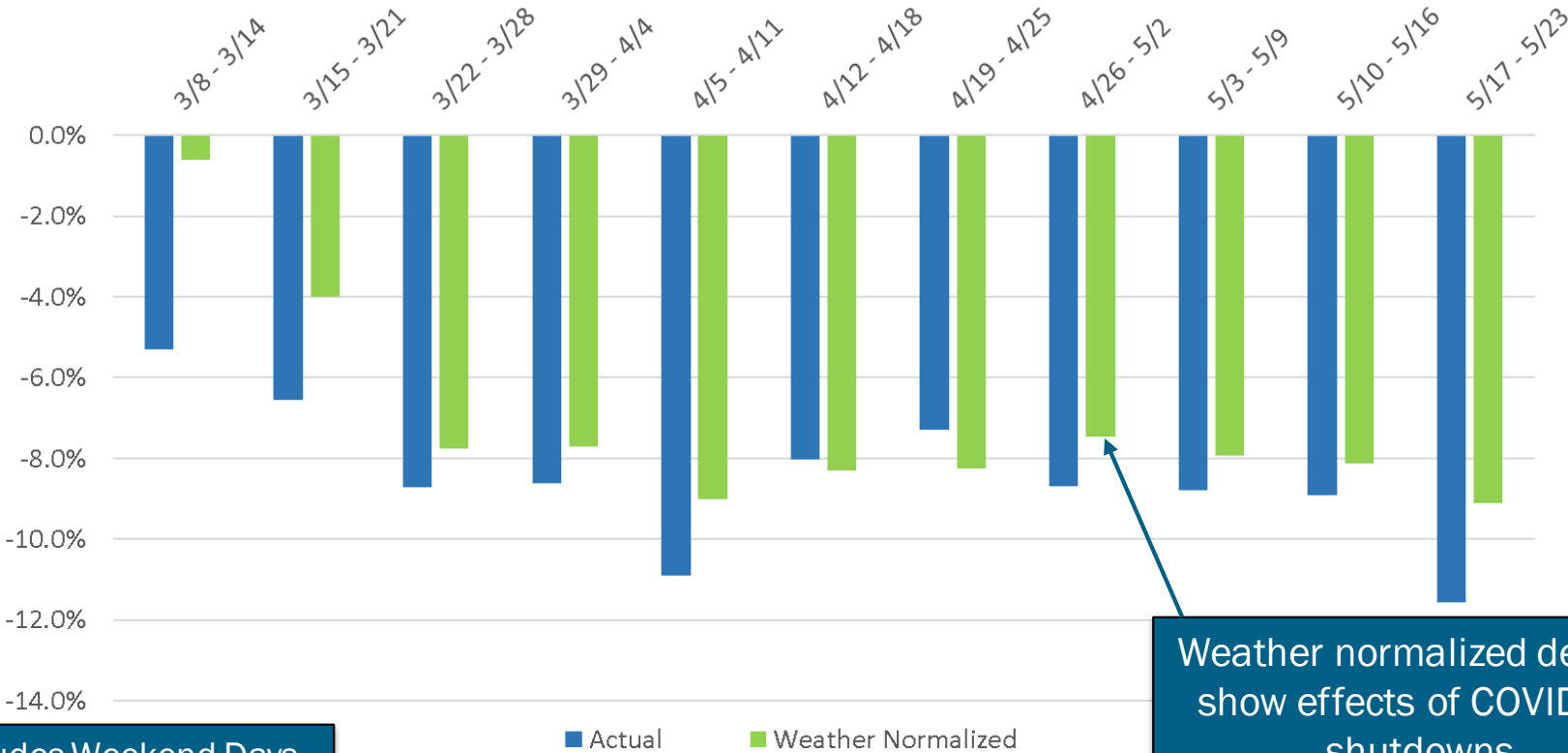
Demand Forecasting & Analysis Team
System & Resource Planning

COVID-19 Tracking Update

May 26, 2020

Recent Impacts on Daily Energy by Week

Weekly Energy Use - % Versus Expected (NYCA)

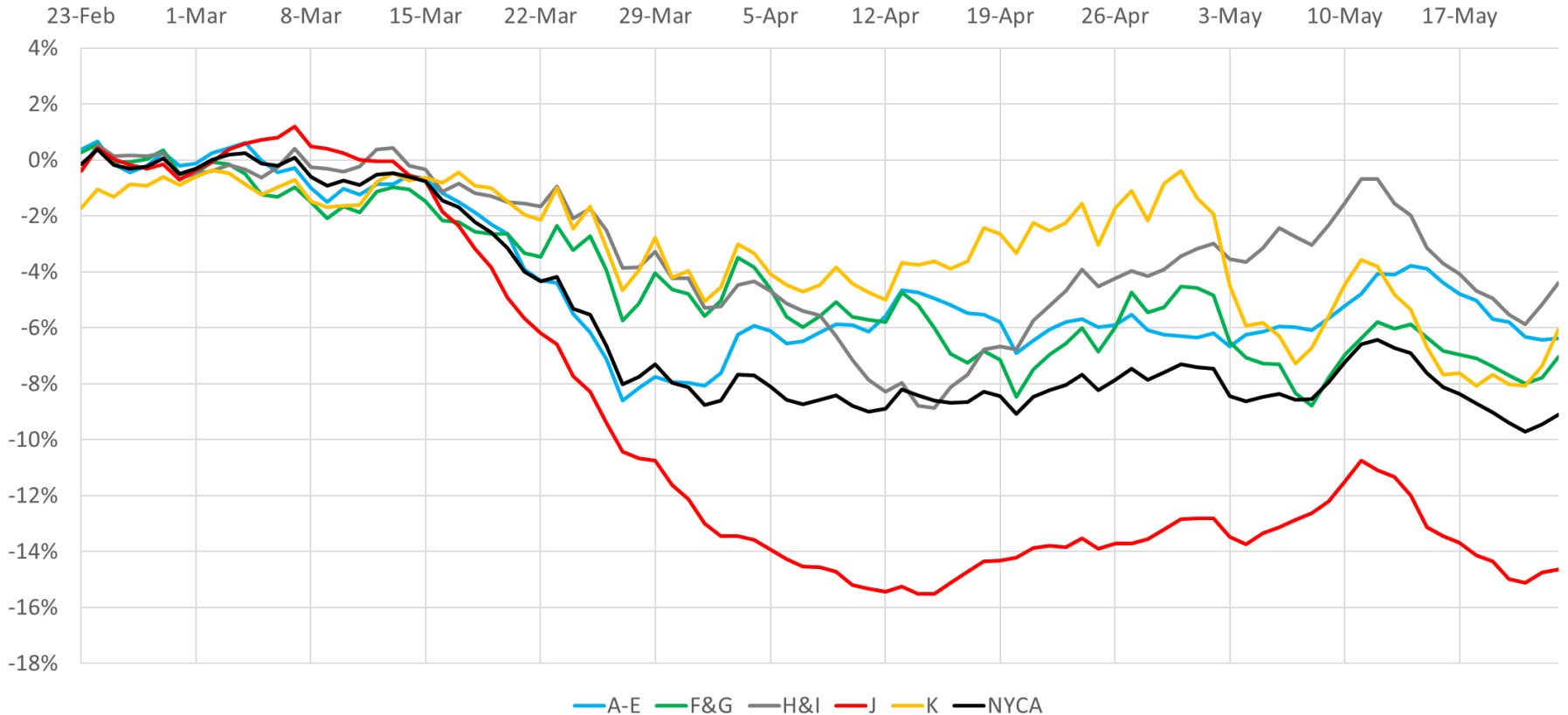


Includes Weekend Days

Weather normalized deficits show effects of COVID-19 shutdowns

Regional Impacts on Daily Energy Patterns

2020 Weather Normalized Load Relative to Expected Load, 7-Day Moving Average (Daily Energy)

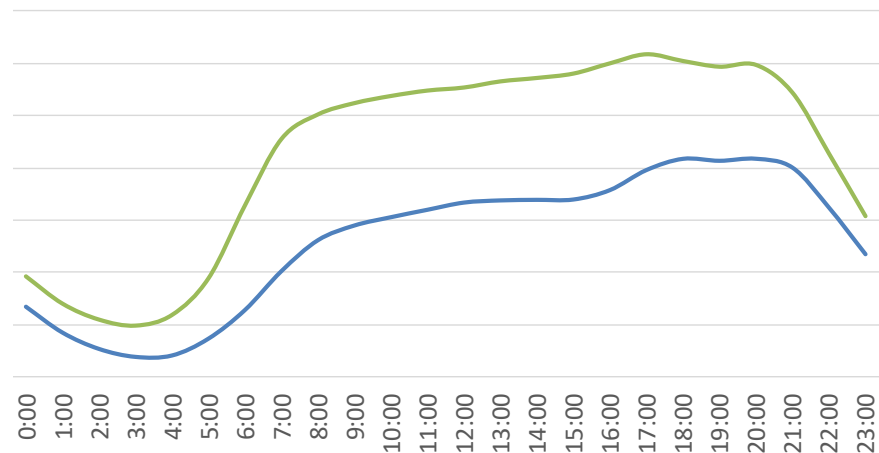
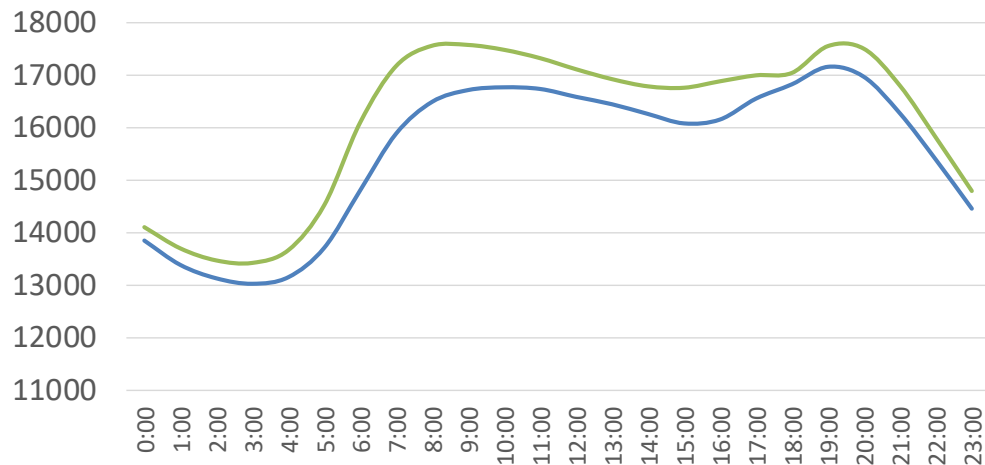


Recent Impacts on Hourly Load Patterns

— Actual — Simulated

March 16-20 (MW)

May 18 - May 22 (MW)

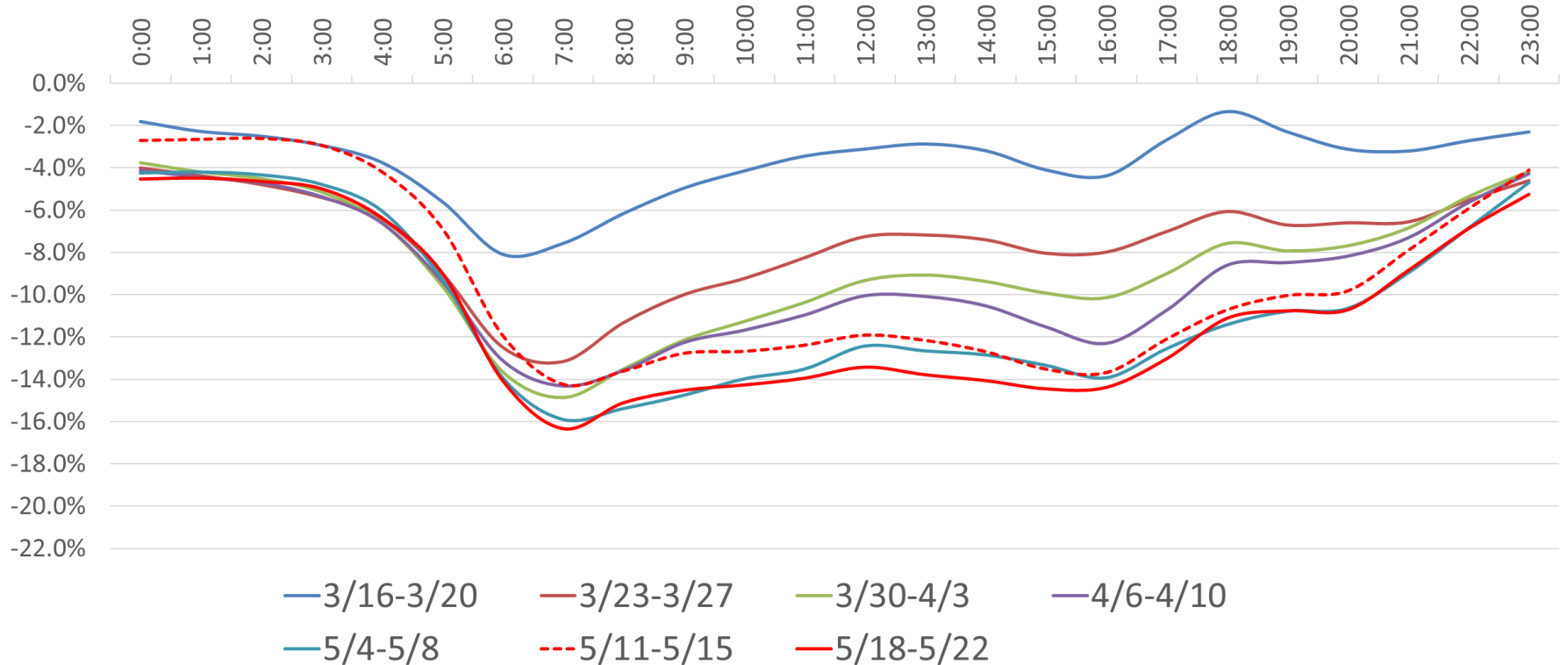


Week 1 of COVID-19 Shutdowns

Week 10

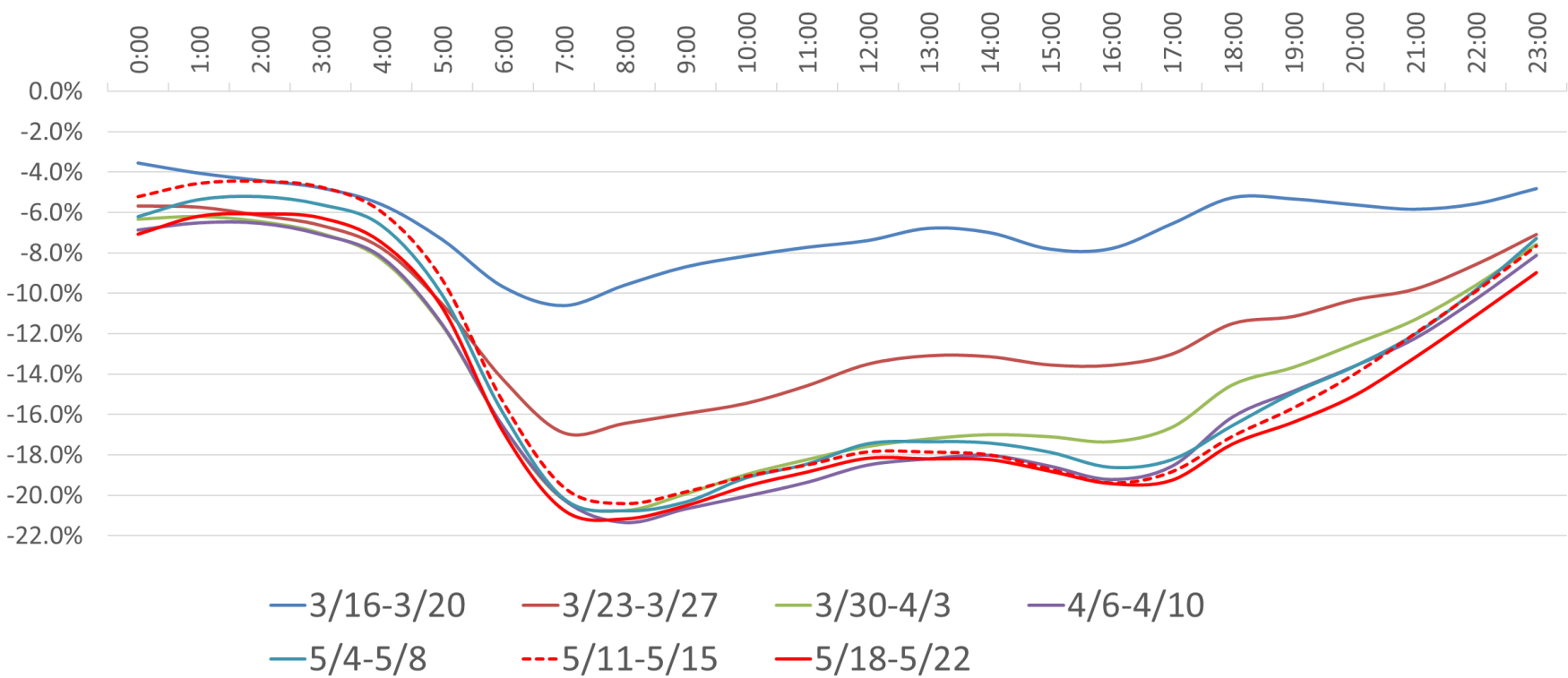
Impacts on Hourly Load Patterns

NYCA Load Profile - Weekday Diurnal Load Changes



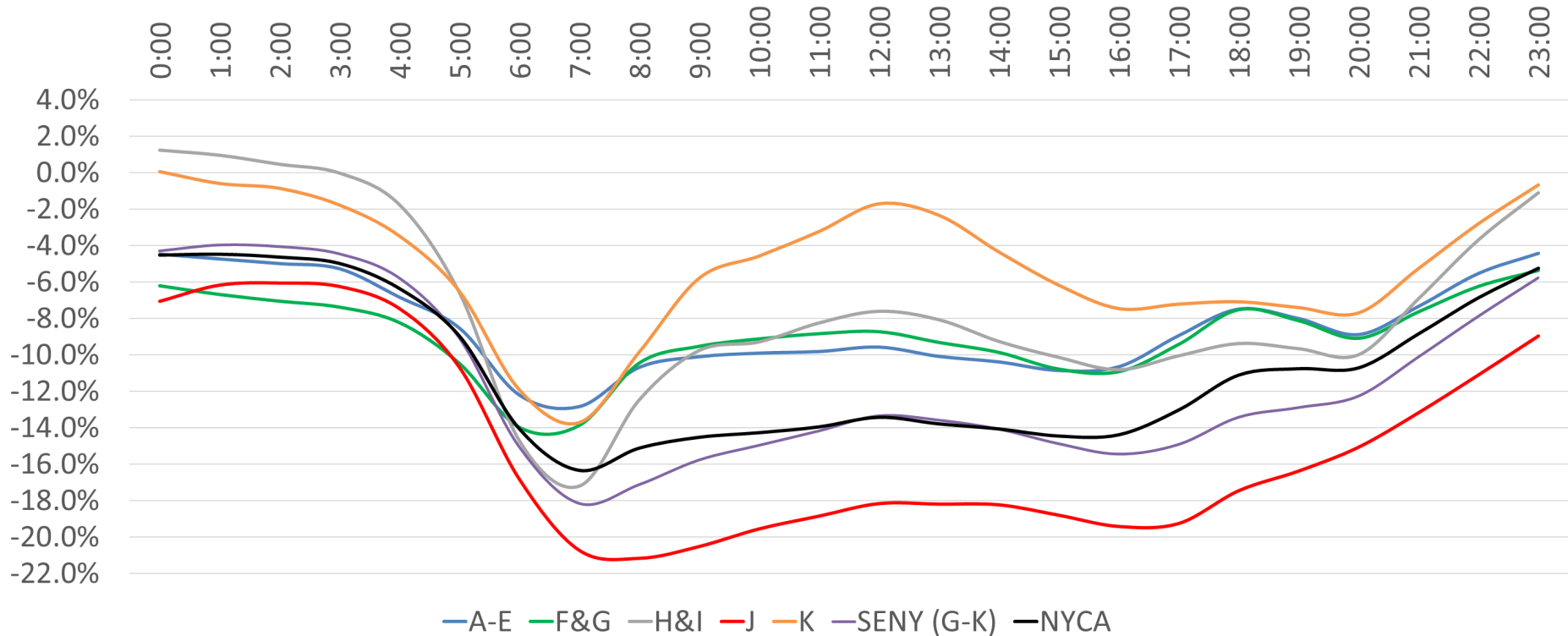
Impacts on Hourly Load Patterns

Zone-J Load Profile - Weekday Diurnal Load Changes



Impacts on Hourly Load Patterns (Area)

Average Hourly Deficit by Area - Week of 5/18 - 5/22 (Weekdays)



Impacts on Hourly Load Patterns (Area)

Hour	A-E	F&G	H&I	J	K	SENY (G-K)	NYCA
0:00	-4.5%	-6.2%	1.2%	-7.1%	0.0%	-4.3%	-4.5%
1:00	-4.7%	-6.7%	0.9%	-6.2%	-0.6%	-4.0%	-4.5%
2:00	-5.0%	-7.1%	0.4%	-6.1%	-0.9%	-4.1%	-4.6%
3:00	-5.3%	-7.4%	0.0%	-6.2%	-1.8%	-4.5%	-5.0%
4:00	-6.8%	-8.2%	-1.8%	-7.5%	-3.5%	-5.8%	-6.4%
5:00	-8.5%	-10.5%	-6.6%	-10.7%	-6.5%	-9.1%	-9.0%
6:00	-12.2%	-14.0%	-14.7%	-16.8%	-11.9%	-15.0%	-14.1%
7:00	-12.8%	-13.9%	-17.2%	-20.7%	-13.7%	-18.2%	-16.3%
8:00	-10.7%	-10.5%	-12.5%	-21.2%	-9.8%	-17.1%	-15.1%
9:00	-10.1%	-9.5%	-9.8%	-20.5%	-5.8%	-15.8%	-14.5%
10:00	-9.9%	-9.1%	-9.3%	-19.6%	-4.6%	-15.0%	-14.3%
11:00	-9.8%	-8.8%	-8.3%	-18.8%	-3.2%	-14.2%	-14.0%
12:00	-9.6%	-8.7%	-7.6%	-18.2%	-1.7%	-13.3%	-13.4%
13:00	-10.1%	-9.3%	-8.1%	-18.2%	-2.3%	-13.6%	-13.8%
14:00	-10.4%	-9.9%	-9.3%	-18.2%	-4.4%	-14.1%	-14.1%
15:00	-10.9%	-10.8%	-10.1%	-18.8%	-6.2%	-14.9%	-14.5%
16:00	-10.7%	-10.9%	-10.8%	-19.4%	-7.5%	-15.4%	-14.4%
17:00	-8.9%	-9.4%	-10.1%	-19.3%	-7.2%	-14.9%	-13.0%
18:00	-7.5%	-7.5%	-9.4%	-17.5%	-7.1%	-13.4%	-11.1%
19:00	-8.0%	-8.1%	-9.7%	-16.4%	-7.4%	-12.9%	-10.8%
20:00	-8.9%	-9.1%	-10.0%	-15.1%	-7.7%	-12.3%	-10.7%
21:00	-7.3%	-7.6%	-6.9%	-13.2%	-5.3%	-10.1%	-8.9%
22:00	-5.5%	-6.3%	-3.7%	-11.1%	-2.8%	-7.9%	-6.9%
23:00	-4.4%	-5.4%	-1.1%	-9.0%	-0.7%	-5.8%	-5.3%

Average Hourly
Load Deficit
By Area
Week of
5/18 - 5/22

Impacts on Hourly Load Patterns (Zone)

Hour	A	B	C	D	E	F	G	H	I	J	K
0:00	-5%	-1%	-8%	-7%	4%	-9%	-3%	-2%	3%	-7%	0%
1:00	-6%	-1%	-8%	-9%	5%	-9%	-3%	-3%	3%	-6%	-1%
2:00	-6%	-1%	-8%	-9%	4%	-9%	-4%	-5%	3%	-6%	-1%
3:00	-6%	-1%	-9%	-10%	4%	-10%	-4%	-5%	2%	-6%	-2%
4:00	-7%	-3%	-10%	-12%	1%	-10%	-5%	-7%	1%	-7%	-3%
5:00	-8%	-5%	-12%	-12%	-2%	-12%	-8%	-13%	-4%	-11%	-7%
6:00	-11%	-10%	-15%	-14%	-9%	-15%	-12%	-21%	-12%	-17%	-12%
7:00	-12%	-11%	-15%	-15%	-9%	-14%	-14%	-19%	-17%	-21%	-14%
8:00	-10%	-9%	-13%	-13%	-6%	-9%	-12%	-13%	-12%	-21%	-10%
9:00	-10%	-9%	-13%	-11%	-5%	-8%	-12%	-10%	-10%	-21%	-6%
10:00	-10%	-9%	-13%	-10%	-5%	-7%	-12%	-10%	-9%	-20%	-5%
11:00	-10%	-9%	-12%	-10%	-6%	-7%	-12%	-9%	-8%	-19%	-3%
12:00	-9%	-8%	-12%	-9%	-6%	-7%	-11%	-8%	-7%	-18%	-2%
13:00	-10%	-9%	-13%	-10%	-7%	-7%	-12%	-9%	-8%	-18%	-2%
14:00	-10%	-9%	-13%	-11%	-7%	-8%	-12%	-10%	-9%	-18%	-4%
15:00	-10%	-9%	-13%	-12%	-8%	-9%	-13%	-11%	-10%	-19%	-6%
16:00	-10%	-9%	-13%	-13%	-8%	-10%	-13%	-11%	-11%	-19%	-7%
17:00	-9%	-6%	-11%	-13%	-4%	-8%	-11%	-9%	-10%	-19%	-7%
18:00	-8%	-5%	-10%	-10%	-1%	-7%	-9%	-10%	-9%	-17%	-7%
19:00	-9%	-6%	-10%	-12%	-1%	-7%	-9%	-11%	-9%	-16%	-7%
20:00	-9%	-7%	-10%	-14%	-3%	-9%	-10%	-12%	-9%	-15%	-8%
21:00	-9%	-6%	-9%	-10%	0%	-8%	-8%	-10%	-5%	-13%	-5%
22:00	-7%	-3%	-7%	-9%	2%	-7%	-5%	-6%	-3%	-11%	-3%
23:00	-6%	-2%	-7%	-7%	3%	-7%	-3%	-3%	0%	-9%	-1%

Average Hourly Load Deficit by Zone - Week of 5/18 - 5/22

Our mission, in collaboration with our stakeholders, is to serve the public interest and provide benefit to consumers by:

- Maintaining and enhancing regional reliability
- Operating open, fair and competitive wholesale electricity markets
- Planning the power system for the future
- Providing factual information to policymakers, stakeholders and investors in the power system

