

# Estimated Impacts of COVID-19 on NYISO Load

Analysis through 5/30/2020

---

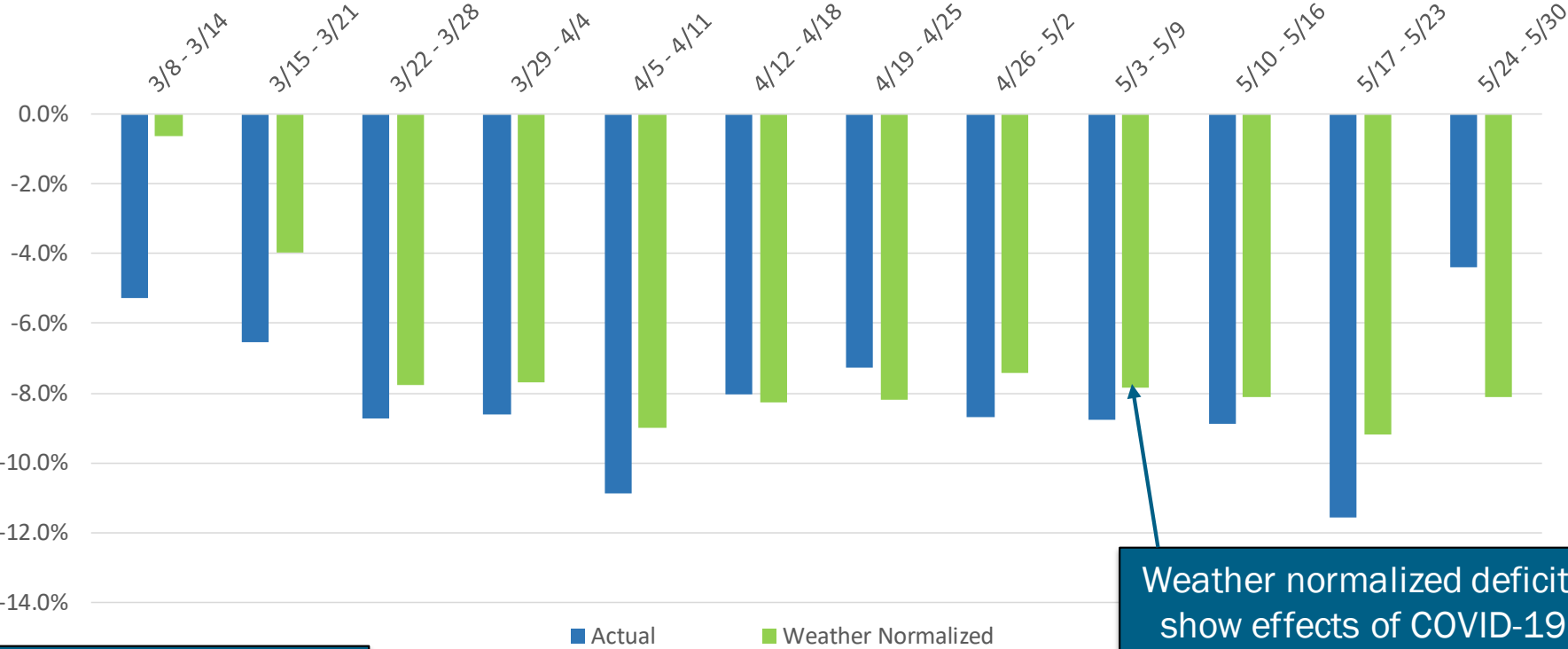
Demand Forecasting & Analysis Team  
System & Resource Planning

**COVID-19 Tracking Update**

June 2, 2020

# Recent Impacts on Daily Energy by Week

Weekly Energy Use - % Versus Expected (NYCA)

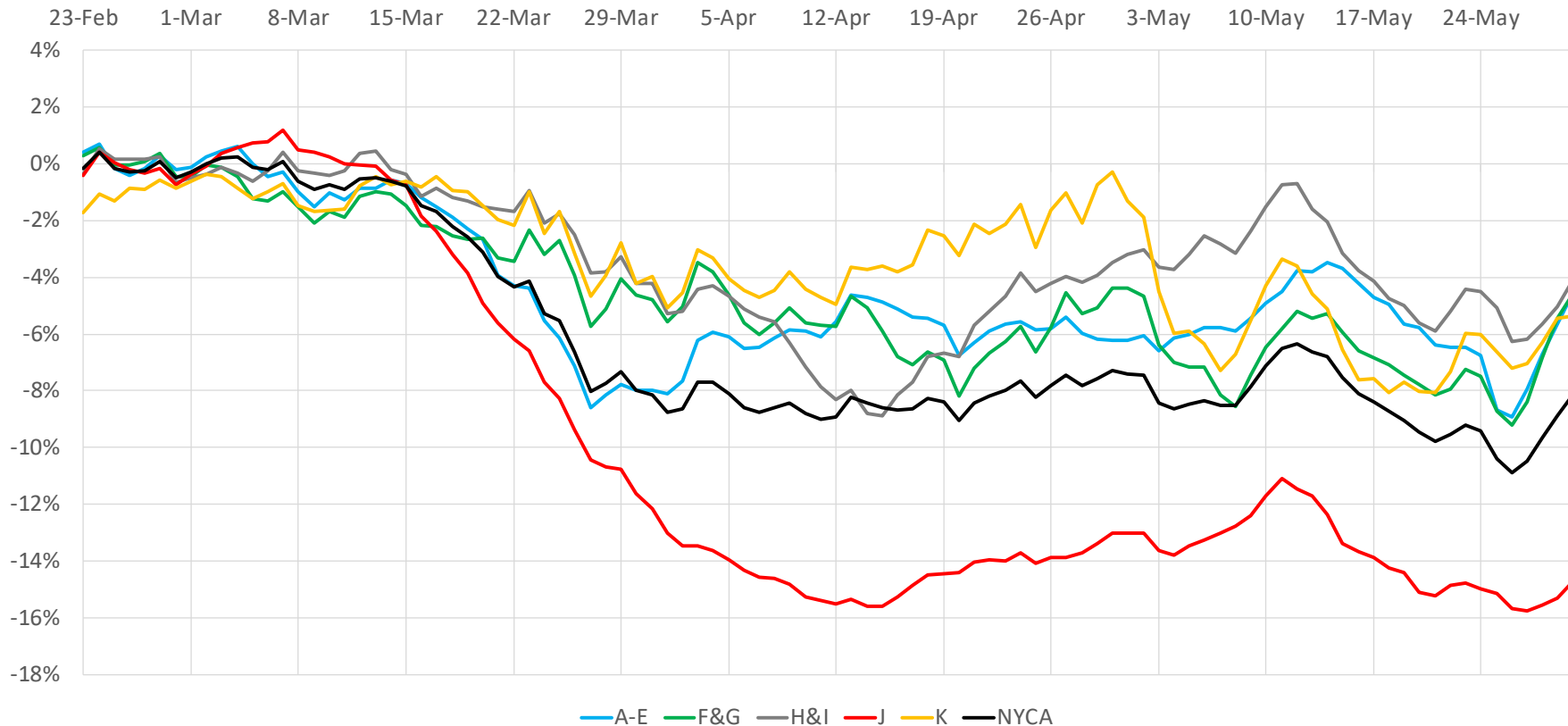


Includes Weekend Days

Weather normalized deficits show effects of COVID-19 shutdowns

# Regional Impacts on Daily Energy Patterns

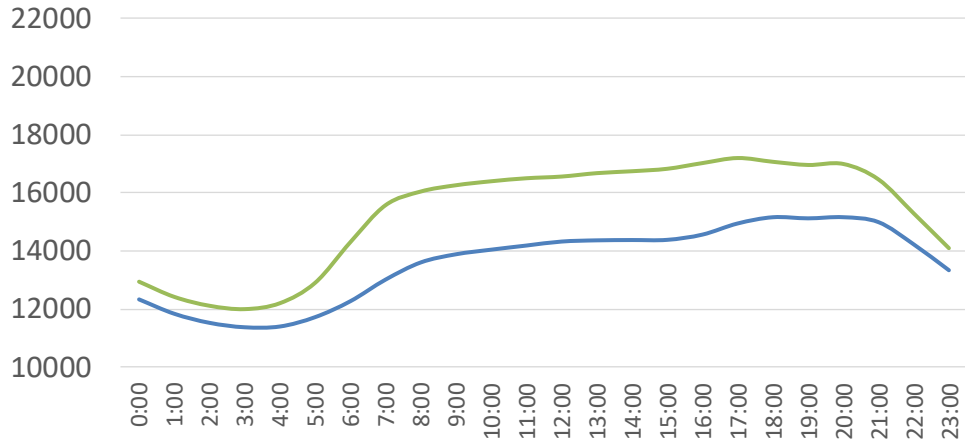
2020 Weather Normalized Load Relative to Expected Load, 7-Day Moving Average (Daily Energy)



# Recent Impacts on Hourly Load Patterns

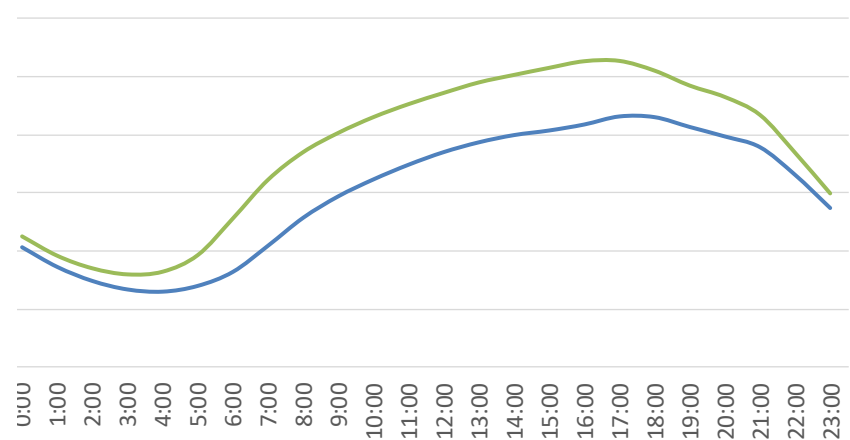
— Actual — Simulated

### May 18 - May 22 (MW)



**Week 10**

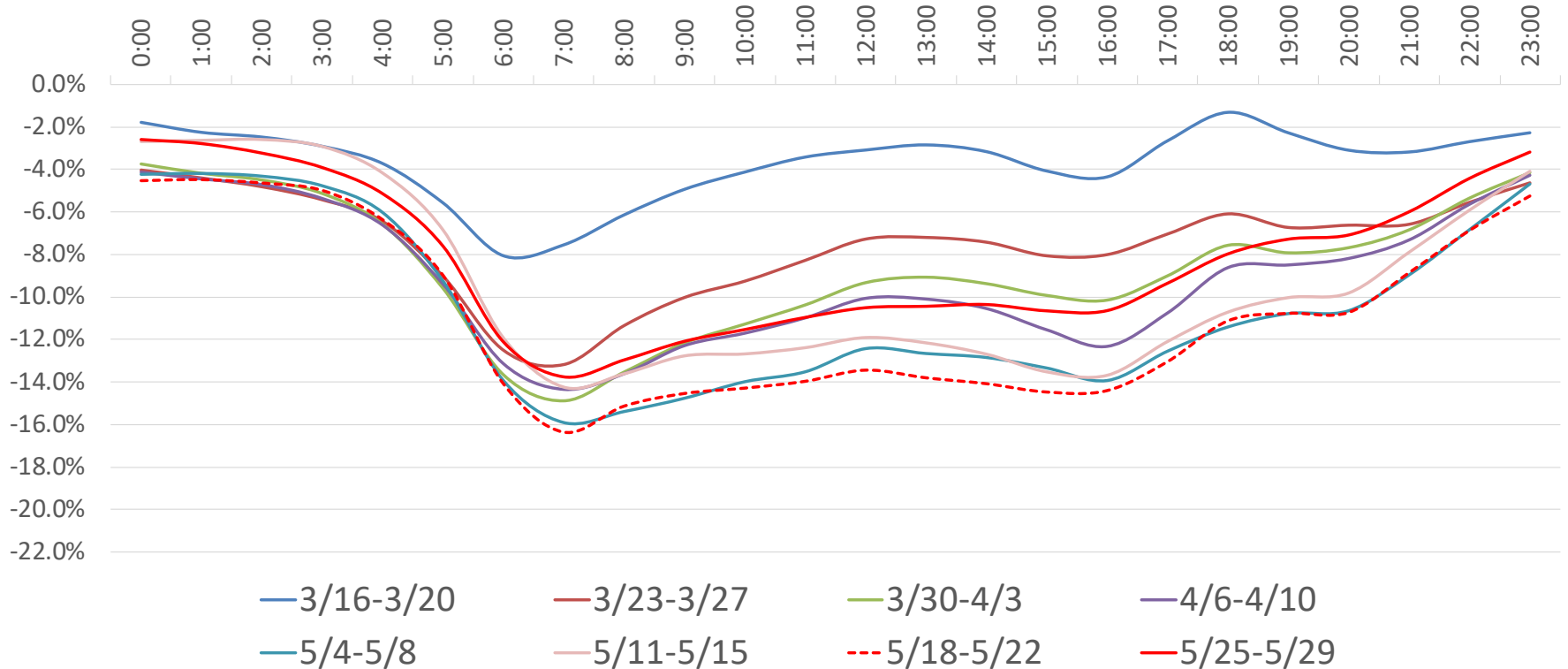
### May 25 - May 29 (MW)



**Week 11**

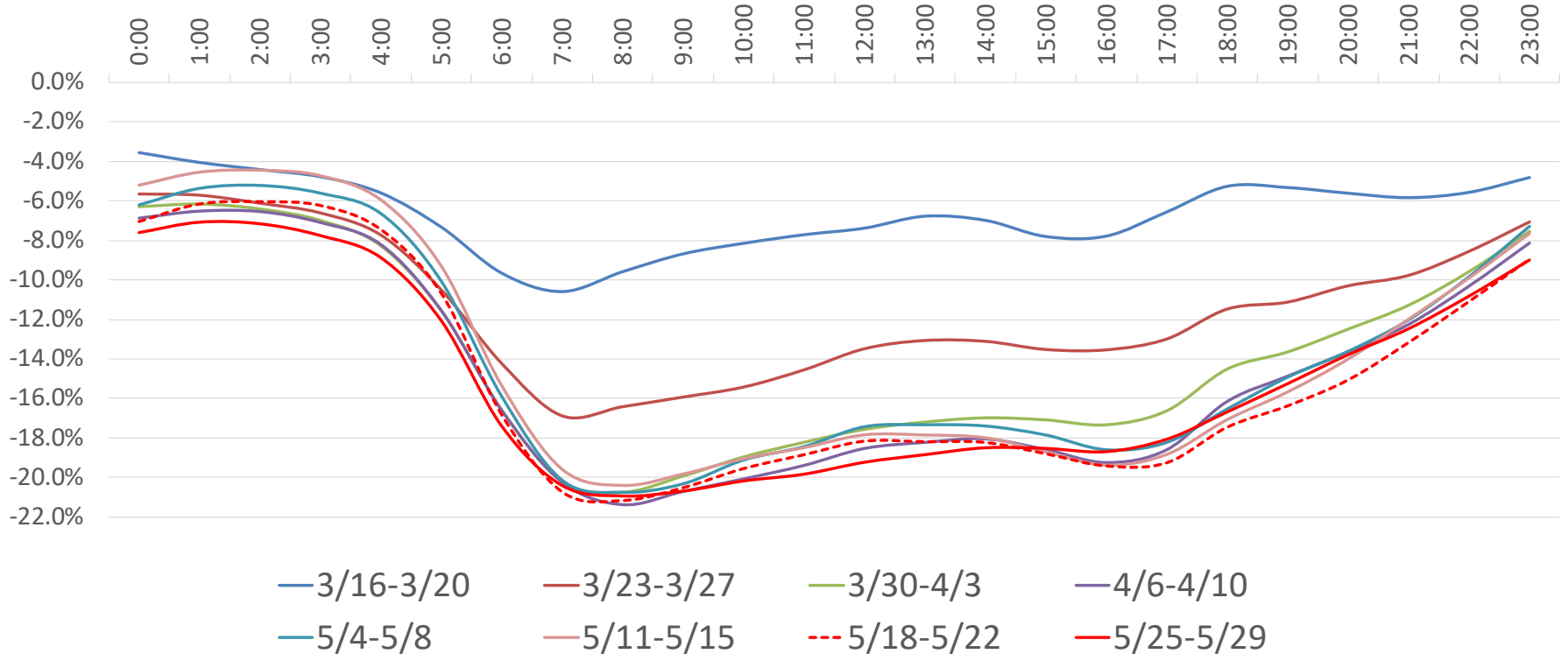
# Impacts on Hourly Load Patterns

NYCA Load Profile - Weekday Diurnal Load Changes



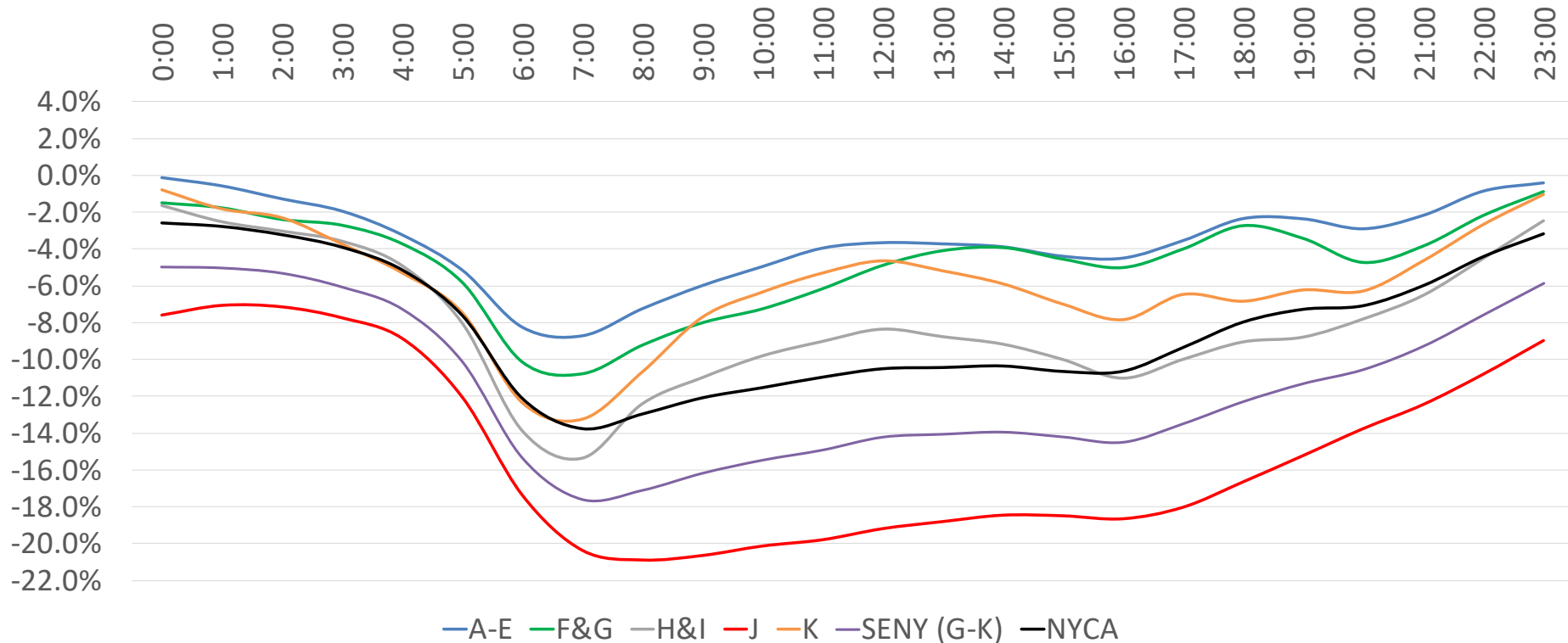
# Impacts on Hourly Load Patterns

Zone-J Load Profile - Weekday Diurnal Load Changes



# Impacts on Hourly Load Patterns (Area)

Average Hourly Deficit by Area - Week of 5/25 - 5/29 (Weekdays)



# Impacts on Hourly Load Patterns (Area)

Hour	A-E	F&G	H&I	J	K	SENY (G-K)	NYCA
0:00	-0.1%	-1.5%	-1.6%	-7.6%	-0.8%	-5.0%	-2.6%
1:00	-0.6%	-1.8%	-2.5%	-7.1%	-1.8%	-5.1%	-2.8%
2:00	-1.3%	-2.4%	-3.0%	-7.2%	-2.3%	-5.3%	-3.2%
3:00	-1.9%	-2.7%	-3.6%	-7.8%	-3.7%	-6.1%	-3.9%
4:00	-3.2%	-3.7%	-4.9%	-8.9%	-5.3%	-7.3%	-5.1%
5:00	-5.1%	-5.8%	-8.0%	-12.1%	-7.4%	-10.1%	-7.6%
6:00	-8.2%	-10.1%	-13.9%	-17.4%	-12.3%	-15.3%	-12.1%
7:00	-8.7%	-10.8%	-15.3%	-20.4%	-13.2%	-17.6%	-13.7%
8:00	-7.2%	-9.2%	-12.4%	-20.9%	-10.7%	-17.1%	-12.9%
9:00	-6.0%	-8.0%	-11.0%	-20.7%	-7.7%	-16.2%	-12.1%
10:00	-4.9%	-7.3%	-9.8%	-20.1%	-6.3%	-15.5%	-11.5%
11:00	-4.0%	-6.2%	-9.0%	-19.8%	-5.3%	-14.9%	-10.9%
12:00	-3.7%	-4.9%	-8.3%	-19.2%	-4.6%	-14.2%	-10.5%
13:00	-3.7%	-4.1%	-8.8%	-18.8%	-5.2%	-14.1%	-10.4%
14:00	-3.9%	-3.9%	-9.2%	-18.5%	-5.9%	-14.0%	-10.3%
15:00	-4.4%	-4.6%	-10.0%	-18.5%	-7.0%	-14.2%	-10.6%
16:00	-4.5%	-5.0%	-11.0%	-18.7%	-7.8%	-14.5%	-10.6%
17:00	-3.5%	-4.0%	-10.0%	-18.0%	-6.5%	-13.5%	-9.3%
18:00	-2.4%	-2.7%	-9.0%	-16.7%	-6.8%	-12.3%	-8.0%
19:00	-2.4%	-3.4%	-8.8%	-15.2%	-6.2%	-11.3%	-7.3%
20:00	-2.9%	-4.7%	-7.8%	-13.8%	-6.3%	-10.6%	-7.1%
21:00	-2.2%	-3.8%	-6.5%	-12.5%	-4.6%	-9.3%	-6.0%
22:00	-0.9%	-2.2%	-4.5%	-10.8%	-2.6%	-7.6%	-4.4%
23:00	-0.4%	-0.9%	-2.5%	-9.0%	-1.0%	-5.9%	-3.2%

Average Hourly  
Load Deficit  
By Area  
Week of  
5/25 - 5/29



# Impacts on Hourly Load Patterns (Zone)

Hour	A	B	C	D	E	F	G	H	I	J	K
0:00	-2%	4%	-1%	-5%	6%	-1%	-3%	-5%	0%	-8%	-1%
1:00	-3%	3%	-1%	-9%	7%	-1%	-3%	-7%	-1%	-7%	-2%
2:00	-3%	3%	-2%	-10%	7%	-1%	-4%	-7%	-1%	-7%	-2%
3:00	-4%	2%	-3%	-10%	7%	-2%	-4%	-8%	-2%	-8%	-4%
4:00	-5%	1%	-4%	-10%	4%	-3%	-5%	-8%	-3%	-9%	-5%
5:00	-7%	-2%	-6%	-10%	1%	-5%	-7%	-12%	-6%	-12%	-7%
6:00	-9%	-7%	-9%	-11%	-4%	-9%	-12%	-17%	-12%	-17%	-12%
7:00	-9%	-8%	-9%	-13%	-3%	-9%	-13%	-16%	-15%	-20%	-13%
8:00	-7%	-7%	-9%	-12%	-1%	-6%	-13%	-14%	-12%	-21%	-11%
9:00	-6%	-5%	-7%	-8%	-1%	-4%	-13%	-11%	-11%	-21%	-8%
10:00	-6%	-4%	-6%	-8%	-1%	-3%	-12%	-10%	-10%	-20%	-6%
11:00	-5%	-1%	-5%	-8%	-1%	-2%	-12%	-8%	-9%	-20%	-5%
12:00	-5%	0%	-5%	-9%	0%	-1%	-10%	-7%	-9%	-19%	-5%
13:00	-6%	1%	-4%	-10%	0%	0%	-10%	-8%	-9%	-19%	-5%
14:00	-6%	0%	-4%	-10%	1%	0%	-9%	-8%	-9%	-18%	-6%
15:00	-6%	-2%	-4%	-12%	0%	-1%	-9%	-9%	-10%	-19%	-7%
16:00	-5%	-2%	-5%	-13%	0%	-2%	-9%	-9%	-12%	-19%	-8%
17:00	-5%	-1%	-4%	-12%	2%	-1%	-8%	-7%	-11%	-18%	-6%
18:00	-4%	1%	-3%	-12%	3%	-1%	-5%	-7%	-10%	-17%	-7%
19:00	-3%	1%	-3%	-12%	3%	-2%	-5%	-8%	-9%	-15%	-6%
20:00	-3%	-1%	-4%	-13%	4%	-3%	-6%	-8%	-8%	-14%	-6%
21:00	-4%	0%	-3%	-10%	5%	-2%	-6%	-8%	-6%	-12%	-5%
22:00	-3%	2%	-2%	-7%	8%	-1%	-4%	-6%	-4%	-11%	-3%
23:00	-4%	3%	-2%	-5%	8%	0%	-3%	-4%	-2%	-9%	-1%

Average Hourly Load Deficit by Zone - Week of 5/25 - 5/29

# Our mission, in collaboration with our stakeholders, is to serve the public interest and provide benefit to consumers by:

- Maintaining and enhancing regional reliability
- Operating open, fair and competitive wholesale electricity markets
- Planning the power system for the future
- Providing factual information to policymakers, stakeholders and investors in the power system

