

Estimated Impacts of COVID-19 on NYISO Load

Analysis through 6/6/2020

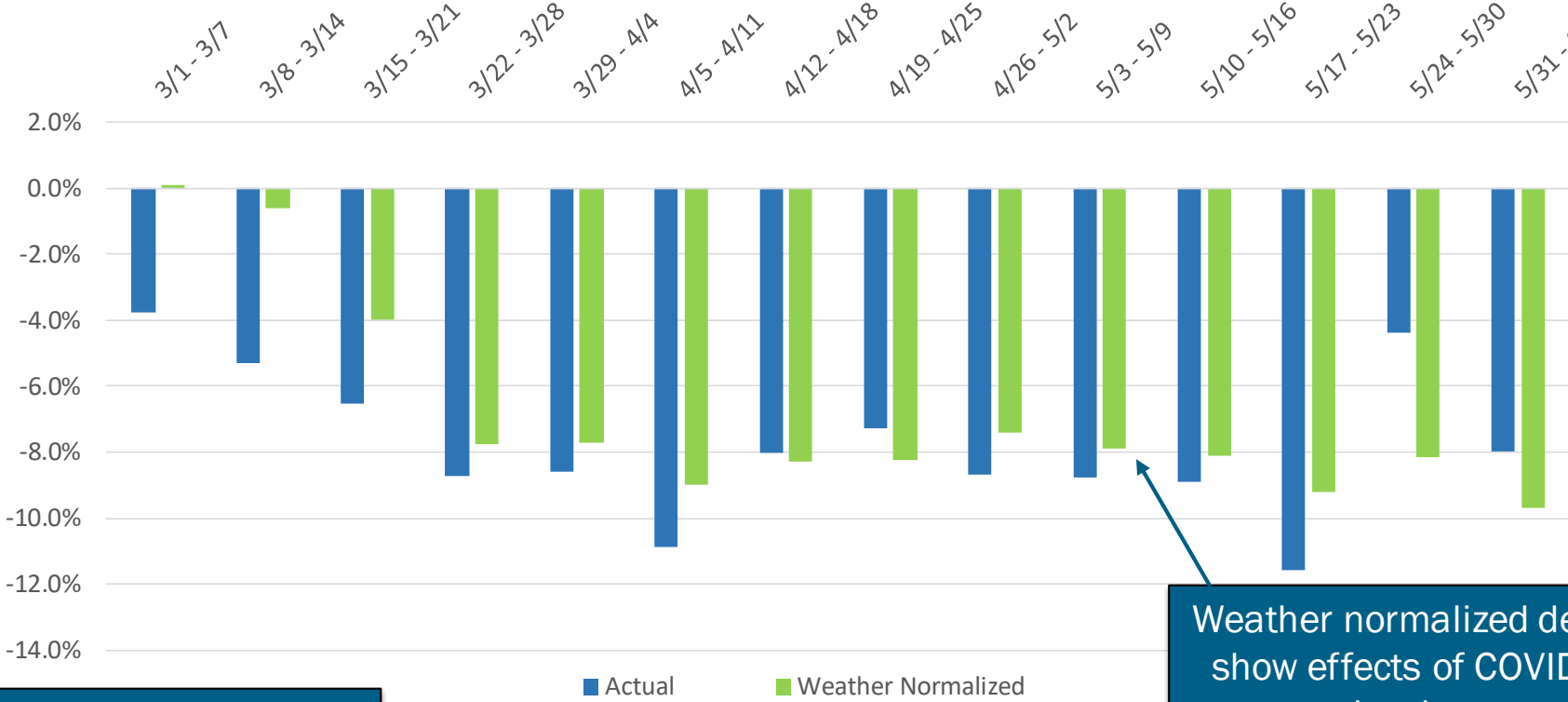
Demand Forecasting & Analysis Team
System & Resource Planning

COVID-19 Tracking Update

June 9, 2020

Recent Impacts on Daily Energy by Week

Weekly Energy Use - % Versus Expected (NYCA)

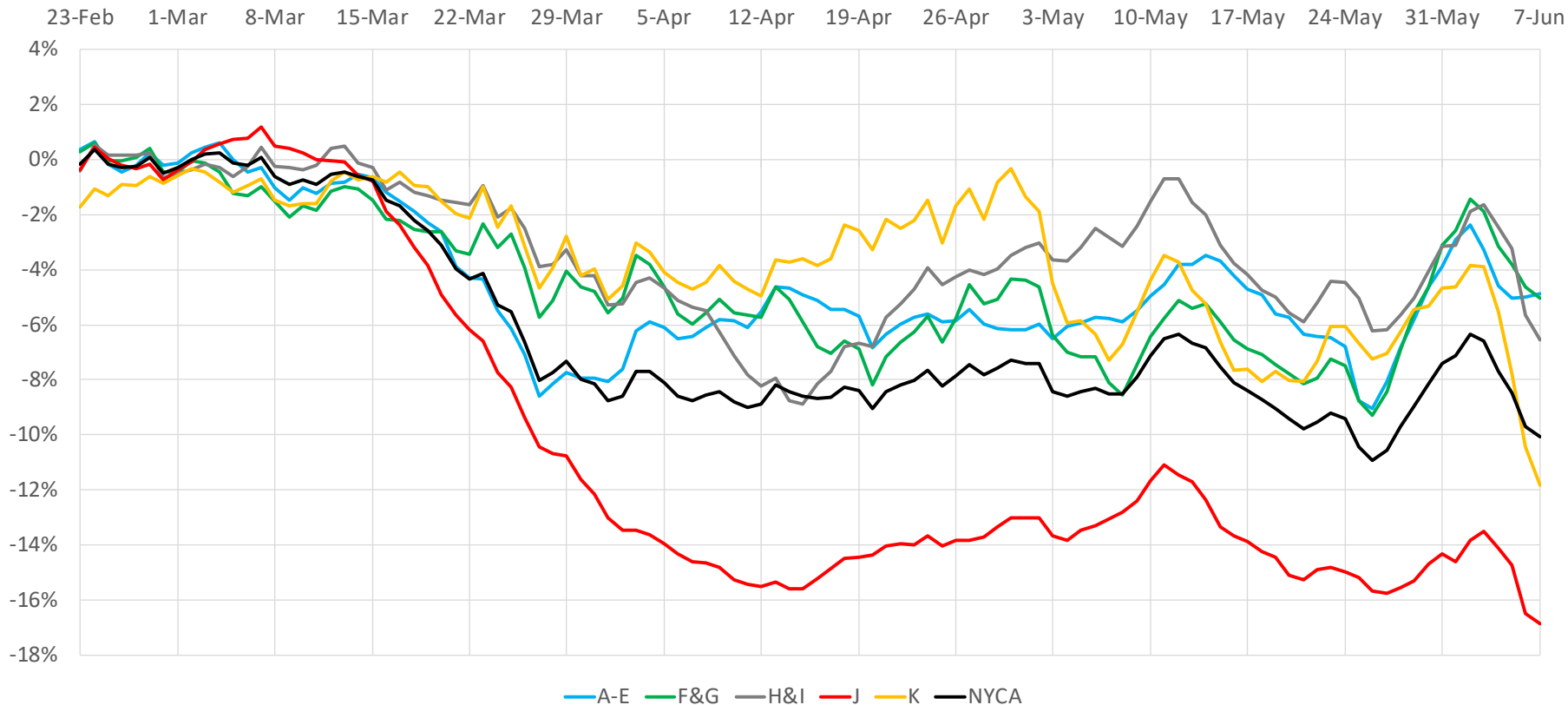


Includes Weekend Days

Weather normalized deficits show effects of COVID-19 shutdowns

Regional Impacts on Daily Energy Patterns

2020 Weather Normalized Load Relative to Expected Load, 7-Day Moving Average (Daily Energy)

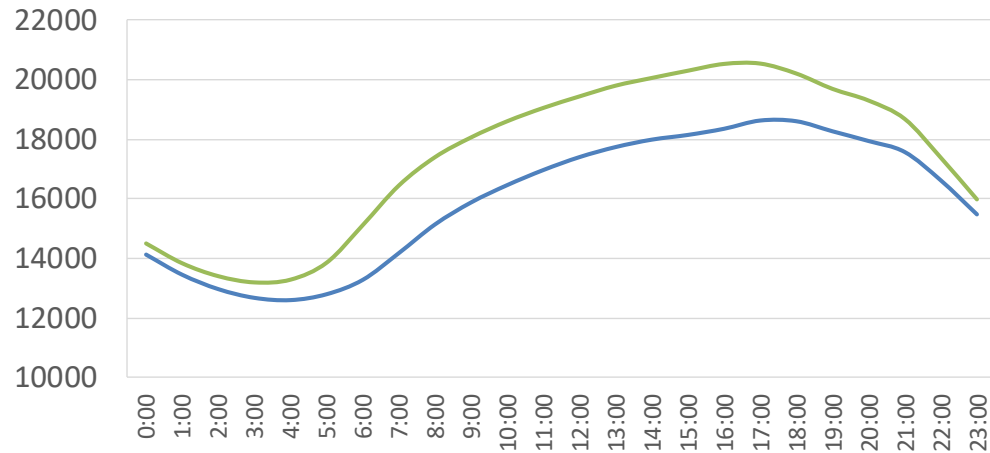


Recent Impacts on Hourly Load Patterns

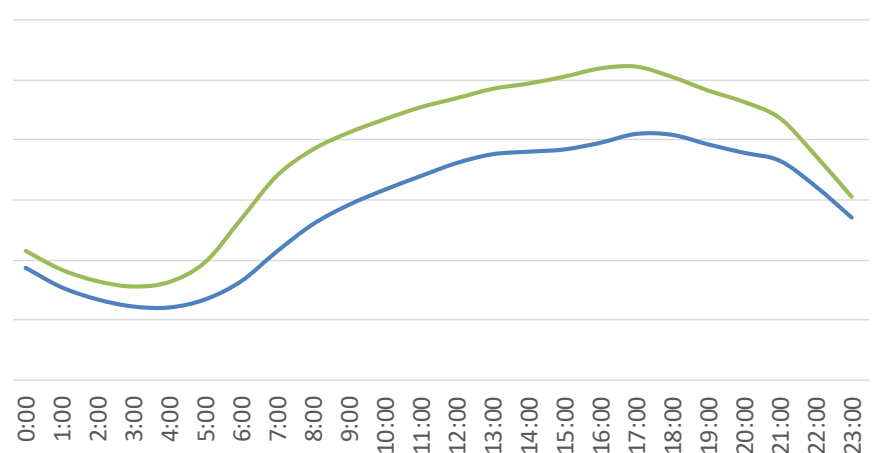
— Actual — Simulated

May 25 - May 29 (MW)

June 1 - June 5 (MW)



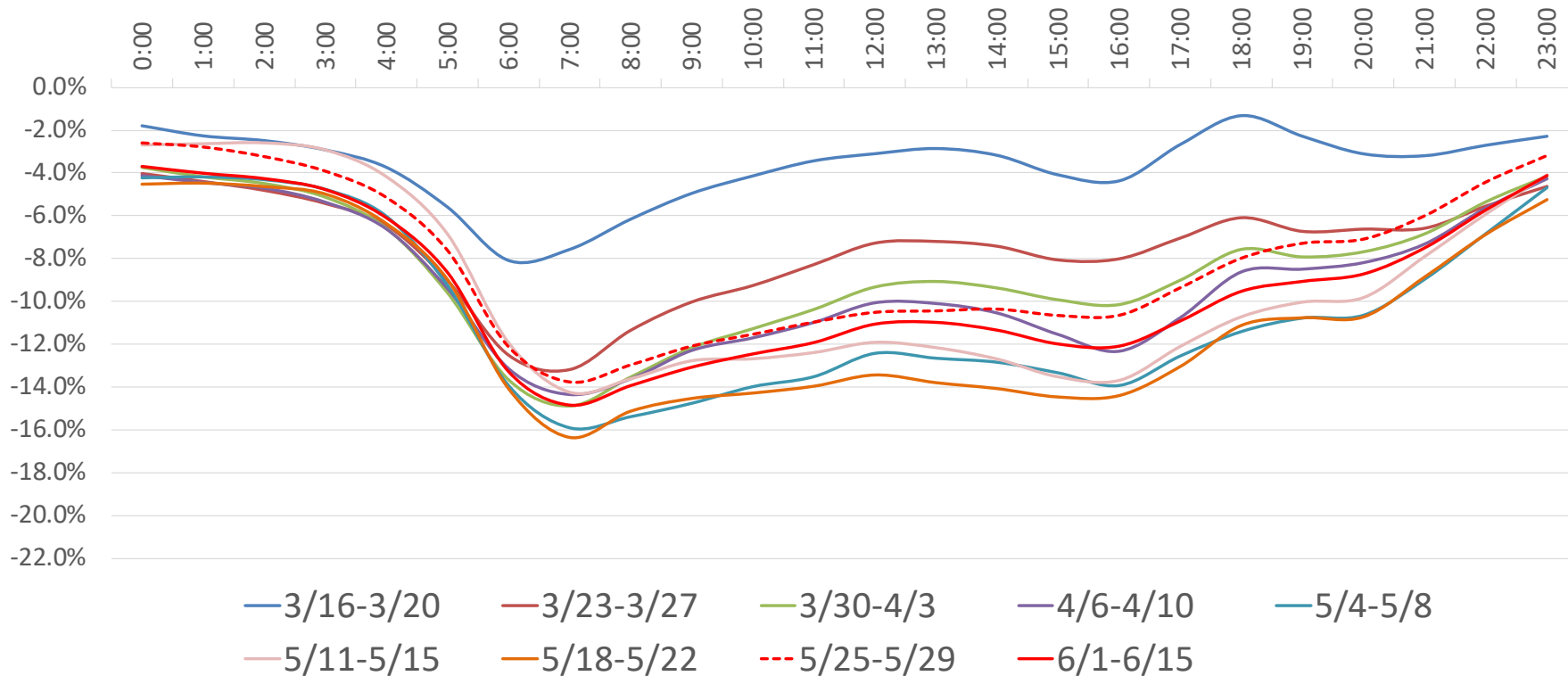
Week 11



Week 12

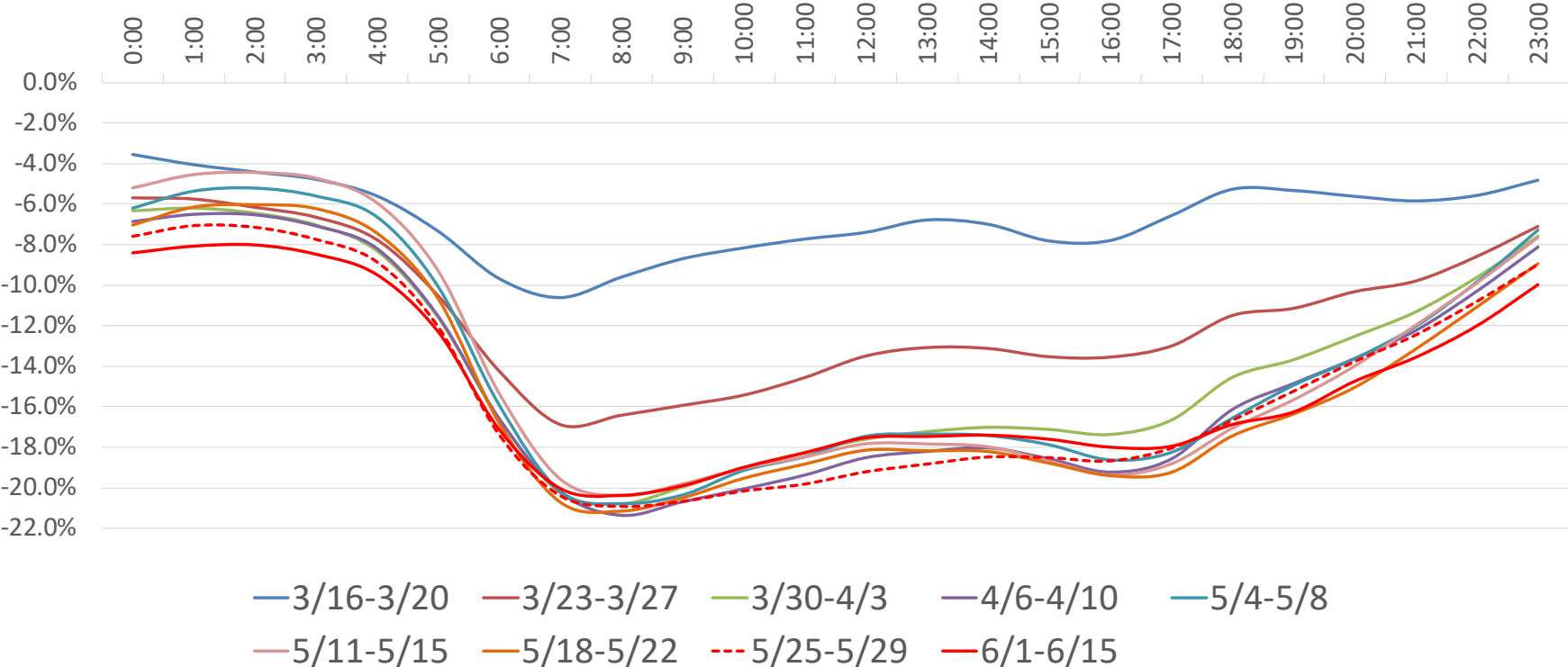
Impacts on Hourly Load Patterns

NYCA Load Profile - Weekday Diurnal Load Changes



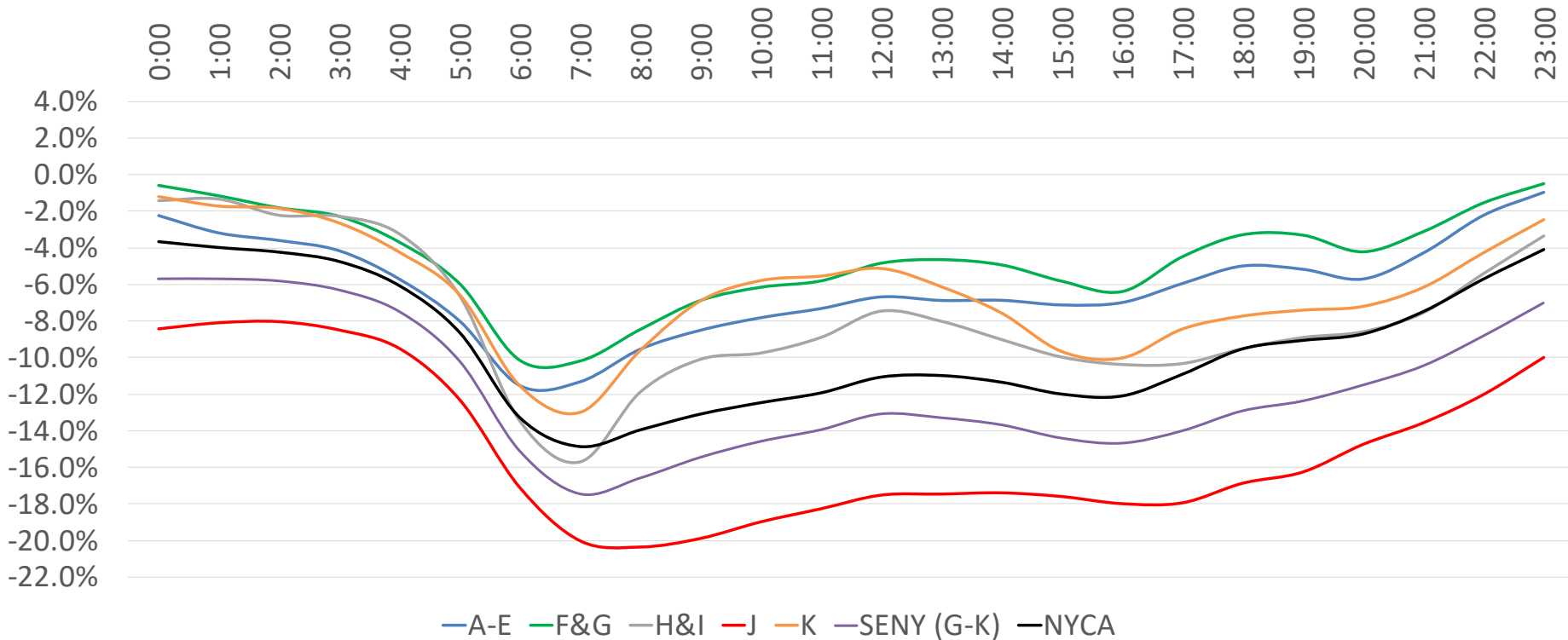
Impacts on Hourly Load Patterns

Zone-J Load Profile - Weekday Diurnal Load Changes



Impacts on Hourly Load Patterns (Area)

Average Hourly Deficit by Area - Week of 6/1 - 6/6 (Weekdays)



Impacts on Hourly Load Patterns (Area)

Hour	A-E	F&G	H&I	J	K	SENY (G-K)	NYCA
0:00	-2.3%	-0.6%	-1.4%	-8.4%	-1.2%	-5.7%	-3.7%
1:00	-3.2%	-1.2%	-1.4%	-8.1%	-1.7%	-5.7%	-4.0%
2:00	-3.6%	-1.8%	-2.2%	-8.0%	-1.9%	-5.8%	-4.3%
3:00	-4.2%	-2.3%	-2.3%	-8.5%	-2.7%	-6.3%	-4.8%
4:00	-5.7%	-3.7%	-3.3%	-9.5%	-4.3%	-7.5%	-6.1%
5:00	-8.0%	-6.0%	-6.6%	-12.3%	-6.6%	-10.2%	-8.6%
6:00	-11.5%	-10.2%	-13.5%	-17.1%	-11.6%	-15.1%	-13.3%
7:00	-11.3%	-10.2%	-15.7%	-20.0%	-13.0%	-17.5%	-14.9%
8:00	-9.5%	-8.5%	-11.9%	-20.4%	-9.6%	-16.6%	-13.9%
9:00	-8.5%	-6.9%	-10.1%	-19.9%	-6.9%	-15.5%	-13.1%
10:00	-7.8%	-6.2%	-9.8%	-19.0%	-5.8%	-14.6%	-12.5%
11:00	-7.3%	-5.8%	-8.9%	-18.3%	-5.6%	-13.9%	-11.9%
12:00	-6.7%	-4.9%	-7.5%	-17.5%	-5.1%	-13.1%	-11.1%
13:00	-6.9%	-4.7%	-8.0%	-17.5%	-6.1%	-13.3%	-11.0%
14:00	-6.9%	-4.9%	-9.0%	-17.4%	-7.6%	-13.7%	-11.4%
15:00	-7.1%	-5.8%	-10.0%	-17.6%	-9.7%	-14.4%	-12.0%
16:00	-7.0%	-6.4%	-10.4%	-18.0%	-10.0%	-14.7%	-12.1%
17:00	-6.0%	-4.5%	-10.3%	-18.0%	-8.5%	-14.0%	-10.9%
18:00	-5.0%	-3.3%	-9.5%	-16.9%	-7.7%	-12.9%	-9.5%
19:00	-5.2%	-3.3%	-8.9%	-16.3%	-7.4%	-12.4%	-9.1%
20:00	-5.7%	-4.2%	-8.6%	-14.8%	-7.2%	-11.5%	-8.7%
21:00	-4.3%	-3.1%	-7.6%	-13.6%	-6.2%	-10.5%	-7.5%
22:00	-2.2%	-1.5%	-5.4%	-12.0%	-4.3%	-8.8%	-5.7%
23:00	-1.0%	-0.5%	-3.4%	-10.0%	-2.5%	-7.0%	-4.1%

Average Hourly
Load Deficit
By Area
Week of
6/1 - 6/5

Impacts on Hourly Load Patterns (Zone)

Hour	A	B	C	D	E	F	G	H	I	J	K
0:00	-3%	1%	-5%	-8%	6%	2%	-4%	-4%	0%	-8%	-1%
1:00	-4%	0%	-6%	-11%	6%	1%	-4%	-3%	-1%	-8%	-2%
2:00	-4%	0%	-6%	-11%	6%	1%	-5%	-4%	-1%	-8%	-2%
3:00	-4%	-1%	-6%	-12%	5%	0%	-5%	-5%	-1%	-8%	-3%
4:00	-6%	-3%	-8%	-12%	3%	-1%	-7%	-5%	-2%	-9%	-4%
5:00	-8%	-5%	-10%	-13%	-2%	-4%	-9%	-9%	-5%	-12%	-7%
6:00	-12%	-10%	-13%	-14%	-7%	-9%	-12%	-16%	-12%	-17%	-12%
7:00	-11%	-10%	-12%	-15%	-7%	-8%	-13%	-16%	-16%	-20%	-13%
8:00	-10%	-9%	-11%	-12%	-4%	-5%	-13%	-10%	-13%	-20%	-10%
9:00	-9%	-7%	-11%	-10%	-3%	-3%	-11%	-7%	-12%	-20%	-7%
10:00	-8%	-7%	-10%	-8%	-3%	-3%	-11%	-7%	-11%	-19%	-6%
11:00	-8%	-6%	-10%	-7%	-3%	-2%	-11%	-5%	-11%	-18%	-6%
12:00	-8%	-5%	-9%	-7%	-1%	-1%	-9%	-2%	-10%	-18%	-5%
13:00	-7%	-5%	-9%	-9%	-3%	0%	-10%	-3%	-10%	-17%	-6%
14:00	-7%	-4%	-9%	-9%	-3%	-1%	-10%	-5%	-11%	-17%	-8%
15:00	-7%	-4%	-9%	-10%	-4%	-2%	-11%	-6%	-12%	-18%	-10%
16:00	-7%	-4%	-8%	-12%	-4%	-3%	-10%	-6%	-12%	-18%	-10%
17:00	-7%	-3%	-7%	-12%	-2%	-1%	-8%	-6%	-12%	-18%	-8%
18:00	-6%	-2%	-6%	-11%	0%	-1%	-7%	-6%	-11%	-17%	-8%
19:00	-7%	-2%	-6%	-12%	1%	-1%	-6%	-6%	-10%	-16%	-7%
20:00	-7%	-3%	-6%	-13%	0%	-2%	-7%	-7%	-9%	-15%	-7%
21:00	-7%	-2%	-5%	-10%	3%	-1%	-6%	-7%	-8%	-14%	-6%
22:00	-5%	0%	-3%	-6%	5%	1%	-5%	-5%	-5%	-12%	-4%
23:00	-4%	2%	-2%	-4%	7%	2%	-4%	-5%	-3%	-10%	-2%

Average Hourly Load Deficit by Zone - Week of 6/1 - 6/5

Our mission, in collaboration with our stakeholders, is to serve the public interest and provide benefit to consumers by:

- Maintaining and enhancing regional reliability
- Operating open, fair and competitive wholesale electricity markets
- Planning the power system for the future
- Providing factual information to policymakers, stakeholders and investors in the power system

