

# Estimated Impacts of COVID-19 on NYISO Load

Analysis through 6/13/2020

---

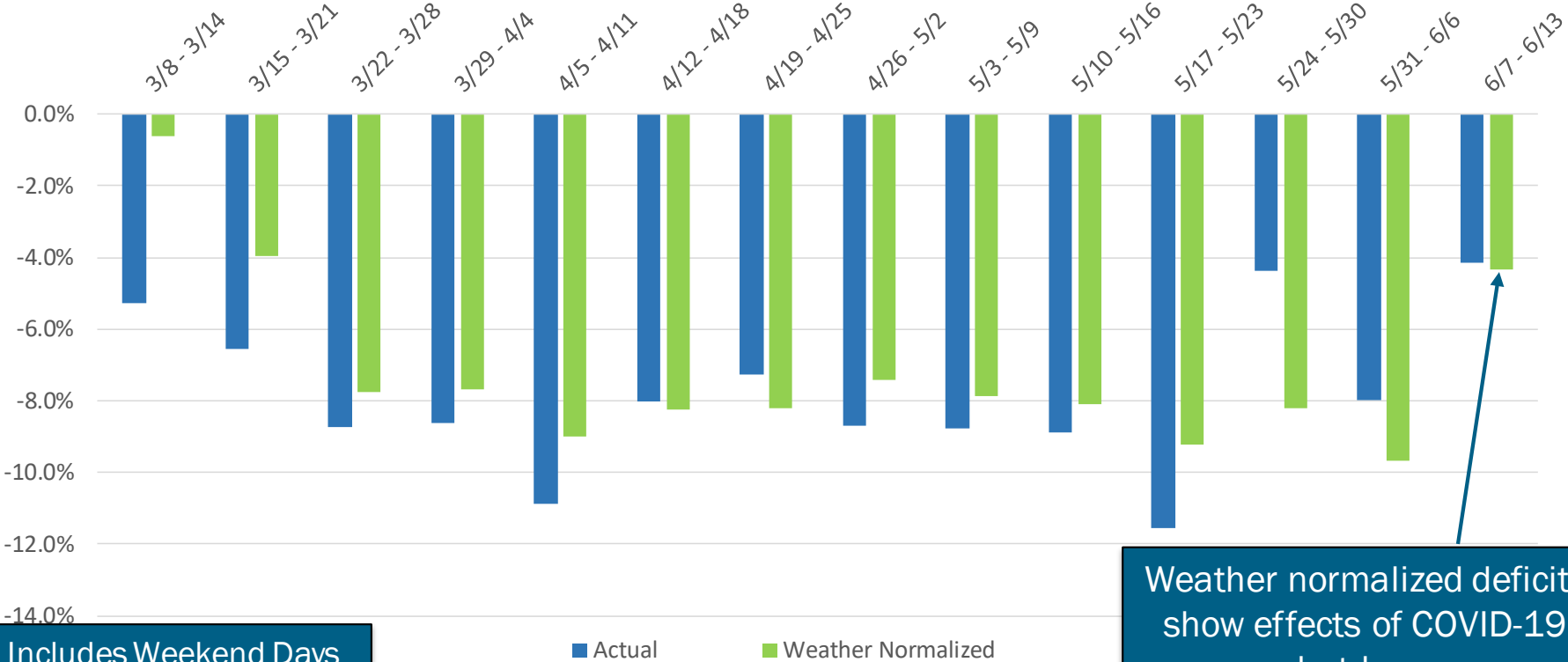
Demand Forecasting & Analysis Team  
System & Resource Planning

**COVID-19 Tracking Update**

June 16, 2020

# Recent Impacts on Daily Energy by Week

Weekly Energy Use - % Versus Expected (NYCA)

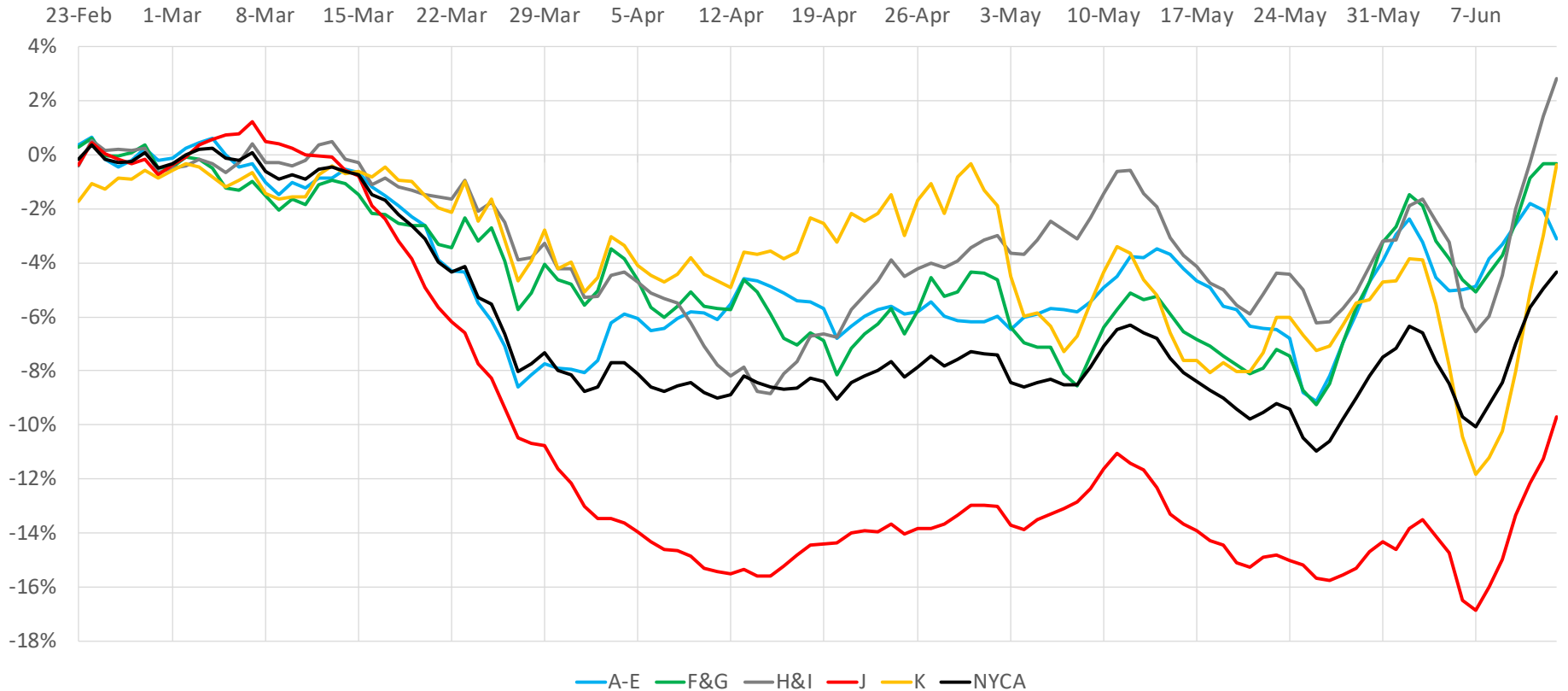


Includes Weekend Days

Weather normalized deficits show effects of COVID-19 shutdowns

# Regional Impacts on Daily Energy Patterns

2020 Weather Normalized Load Relative to Expected Load, 7-Day Moving Average (Daily Energy)

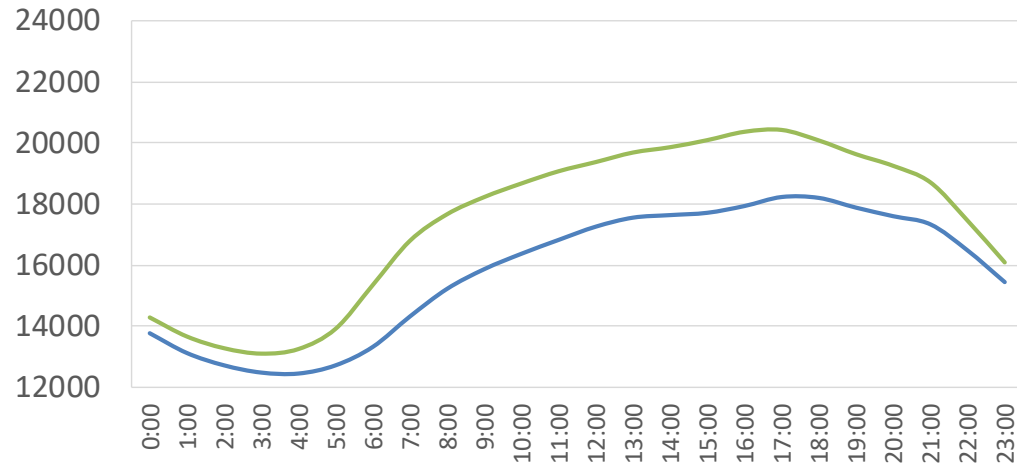


# Recent Impacts on Hourly Load Patterns

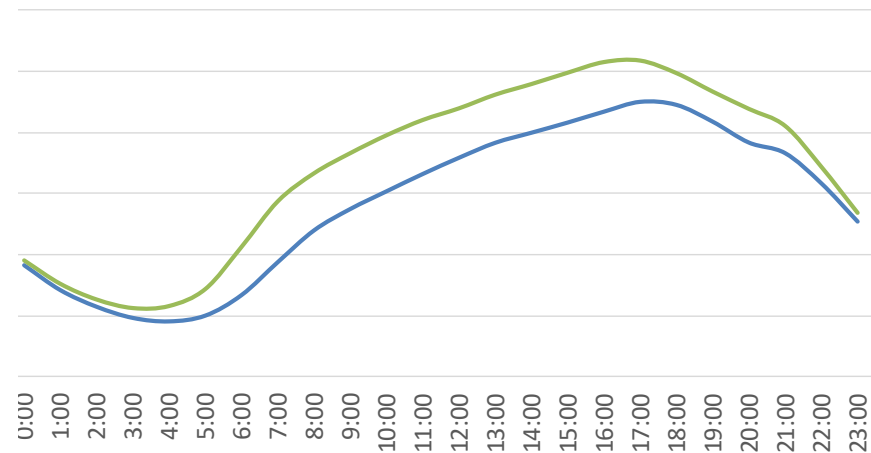
— Actual — Simulated

## June 1 - June 5 (MW)

## June 8 - June 12 (MW)



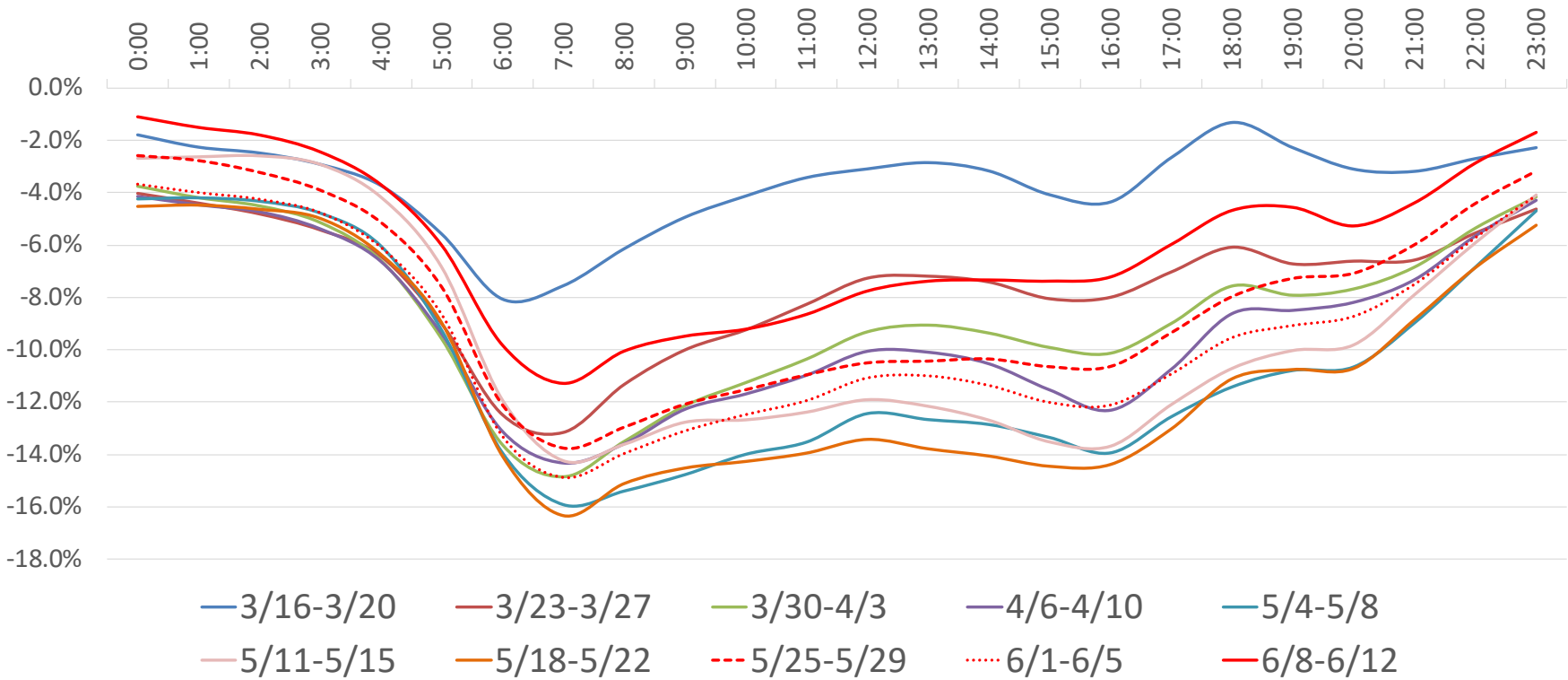
Week 12



Week 13

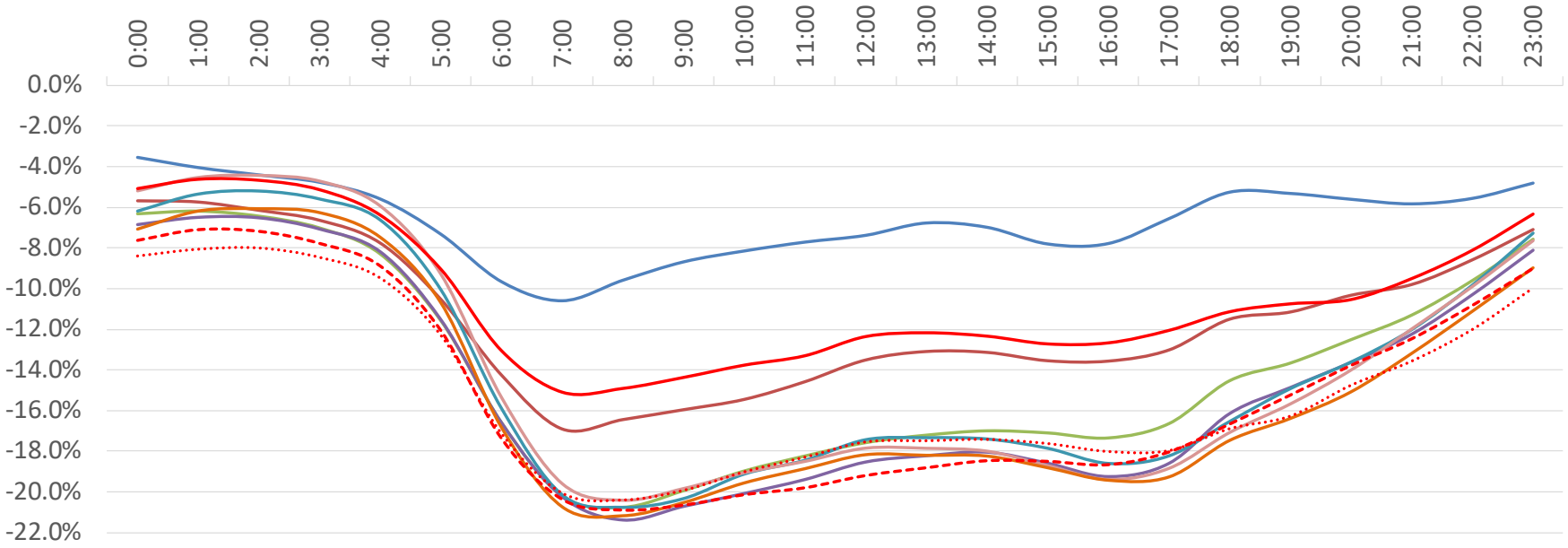
# Impacts on Hourly Load Patterns

NYCA Load Profile - Weekday Diurnal Load Changes



# Impacts on Hourly Load Patterns

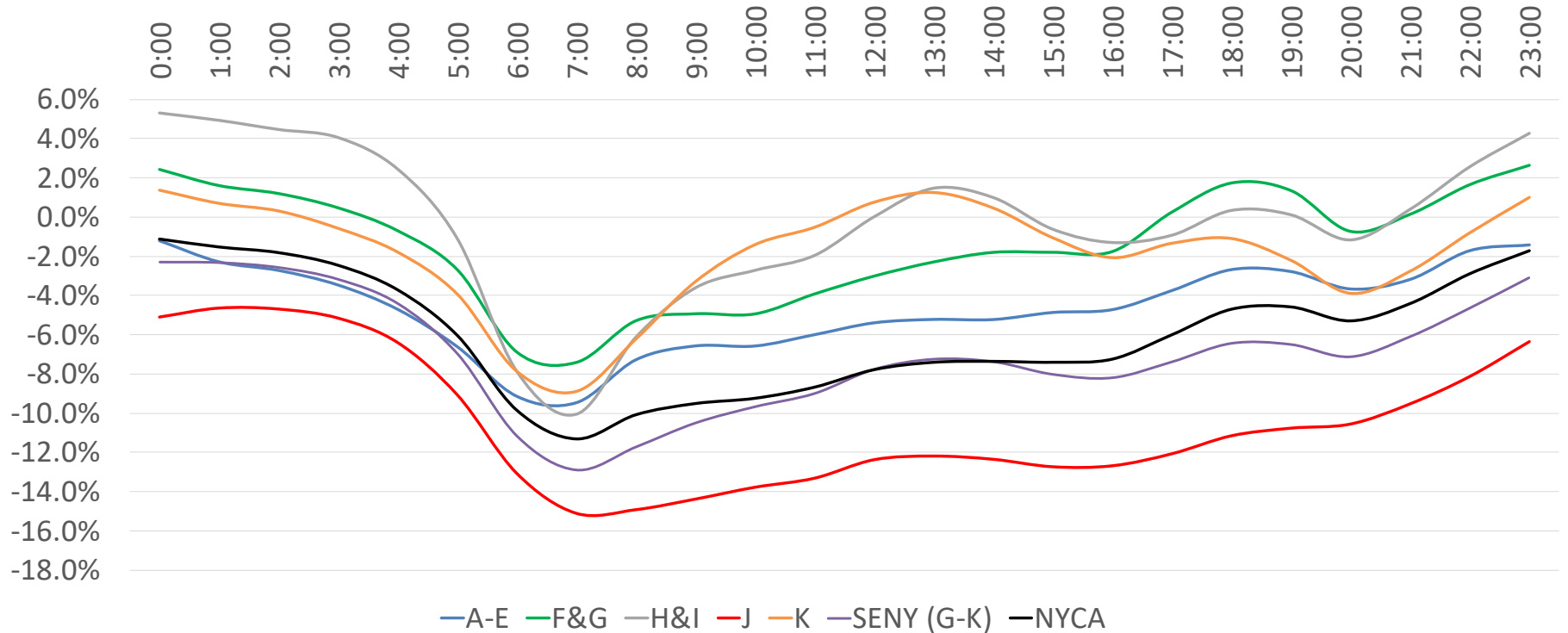
Zone-J Load Profile - Weekday Diurnal Load Changes



- 3/16-3/20
- 3/23-3/27
- 3/30-4/3
- 4/6-4/10
- 5/4-5/8
- 5/11-5/15
- 5/18-5/22
- - 5/25-5/29
- ... 6/1-6/5
- 6/8-6/12

# Impacts on Hourly Load Patterns (Area)

Average Hourly Deficit by Area - Week of 6/8 - 6/12 (Weekdays)



# Impacts on Hourly Load Patterns (Area)

Hour	A-E	F&G	H&I	J	K	SENY (G-K)	NYCA
0:00	-1.2%	2.4%	5.3%	-5.1%	1.4%	-2.3%	-1.1%
1:00	-2.3%	1.6%	4.9%	-4.6%	0.7%	-2.3%	-1.5%
2:00	-2.7%	1.2%	4.5%	-4.7%	0.3%	-2.6%	-1.8%
3:00	-3.5%	0.5%	4.1%	-5.1%	-0.6%	-3.2%	-2.4%
4:00	-4.7%	-0.7%	2.5%	-6.4%	-1.8%	-4.4%	-3.7%
5:00	-6.6%	-2.7%	-1.1%	-9.1%	-3.9%	-7.0%	-6.0%
6:00	-9.1%	-6.9%	-7.9%	-13.1%	-7.9%	-11.2%	-9.8%
7:00	-9.5%	-7.4%	-10.0%	-15.1%	-8.9%	-12.9%	-11.3%
8:00	-7.3%	-5.3%	-6.1%	-14.9%	-6.2%	-11.7%	-10.1%
9:00	-6.6%	-4.9%	-3.6%	-14.4%	-3.3%	-10.5%	-9.5%
10:00	-6.6%	-4.9%	-2.7%	-13.8%	-1.4%	-9.7%	-9.2%
11:00	-6.0%	-3.9%	-1.9%	-13.3%	-0.5%	-9.0%	-8.7%
12:00	-5.4%	-3.0%	0.0%	-12.4%	0.8%	-7.8%	-7.8%
13:00	-5.2%	-2.3%	1.5%	-12.2%	1.2%	-7.3%	-7.4%
14:00	-5.2%	-1.8%	1.0%	-12.3%	0.5%	-7.4%	-7.3%
15:00	-4.9%	-1.8%	-0.6%	-12.7%	-1.1%	-8.0%	-7.4%
16:00	-4.7%	-1.8%	-1.3%	-12.7%	-2.1%	-8.2%	-7.2%
17:00	-3.7%	0.2%	-0.9%	-12.1%	-1.3%	-7.4%	-6.0%
18:00	-2.7%	1.7%	0.3%	-11.1%	-1.1%	-6.4%	-4.7%
19:00	-2.8%	1.3%	0.1%	-10.8%	-2.2%	-6.5%	-4.6%
20:00	-3.7%	-0.7%	-1.2%	-10.5%	-3.9%	-7.1%	-5.3%
21:00	-3.2%	0.1%	0.4%	-9.5%	-2.8%	-6.1%	-4.4%
22:00	-1.7%	1.6%	2.6%	-8.1%	-0.8%	-4.7%	-2.9%
23:00	-1.4%	2.6%	4.3%	-6.3%	1.0%	-3.1%	-1.7%

Average Hourly  
Load Deficit  
By Area  
Week of  
6/8 - 6/12



# Impacts on Hourly Load Patterns (Zone)

Hour	A	B	C	D	E	F	G	H	I	J	K
0:00	-4%	5%	-2%	-7%	4%	5%	-1%	5%	5%	-5%	1%
1:00	-5%	3%	-3%	-10%	3%	5%	-2%	3%	6%	-5%	1%
2:00	-5%	2%	-2%	-11%	2%	4%	-3%	2%	6%	-5%	0%
3:00	-5%	1%	-4%	-11%	1%	4%	-4%	2%	5%	-5%	-1%
4:00	-6%	0%	-5%	-12%	0%	2%	-5%	0%	4%	-6%	-2%
5:00	-8%	-2%	-7%	-13%	-3%	0%	-7%	-4%	0%	-9%	-4%
6:00	-10%	-6%	-9%	-13%	-8%	-4%	-10%	-10%	-7%	-13%	-8%
7:00	-11%	-7%	-9%	-14%	-8%	-5%	-11%	-10%	-10%	-15%	-9%
8:00	-9%	-5%	-8%	-10%	-4%	-2%	-9%	-5%	-7%	-15%	-6%
9:00	-8%	-4%	-7%	-7%	-4%	-2%	-8%	-1%	-5%	-14%	-3%
10:00	-8%	-5%	-7%	-6%	-4%	-2%	-9%	0%	-4%	-14%	-1%
11:00	-8%	-3%	-7%	-4%	-4%	-1%	-8%	2%	-4%	-13%	-1%
12:00	-7%	-1%	-7%	-5%	-4%	0%	-6%	4%	-2%	-12%	1%
13:00	-7%	-1%	-6%	-7%	-5%	0%	-5%	5%	0%	-12%	1%
14:00	-7%	0%	-6%	-8%	-6%	0%	-4%	4%	-1%	-12%	0%
15:00	-6%	1%	-6%	-9%	-5%	0%	-4%	3%	-2%	-13%	-1%
16:00	-6%	1%	-6%	-11%	-4%	0%	-4%	3%	-3%	-13%	-2%
17:00	-5%	1%	-5%	-11%	-2%	2%	-2%	4%	-3%	-12%	-1%
18:00	-4%	2%	-4%	-11%	0%	3%	0%	4%	-2%	-11%	-1%
19:00	-4%	2%	-3%	-12%	1%	3%	0%	3%	-1%	-11%	-2%
20:00	-5%	0%	-4%	-12%	0%	0%	-2%	1%	-2%	-11%	-4%
21:00	-6%	0%	-3%	-9%	2%	2%	-2%	2%	0%	-10%	-3%
22:00	-5%	2%	-2%	-5%	3%	4%	-1%	4%	2%	-8%	-1%
23:00	-5%	3%	-2%	-3%	3%	5%	0%	4%	4%	-6%	1%

Average Hourly Load Deficit by Zone - Week of 6/8 - 6/12

# Our mission, in collaboration with our stakeholders, is to serve the public interest and provide benefit to consumers by:

- Maintaining and enhancing regional reliability
- Operating open, fair and competitive wholesale electricity markets
- Planning the power system for the future
- Providing factual information to policymakers, stakeholders and investors in the power system

