

Estimated Impacts of COVID-19 on NYISO Load

Analysis through 7/11/2020

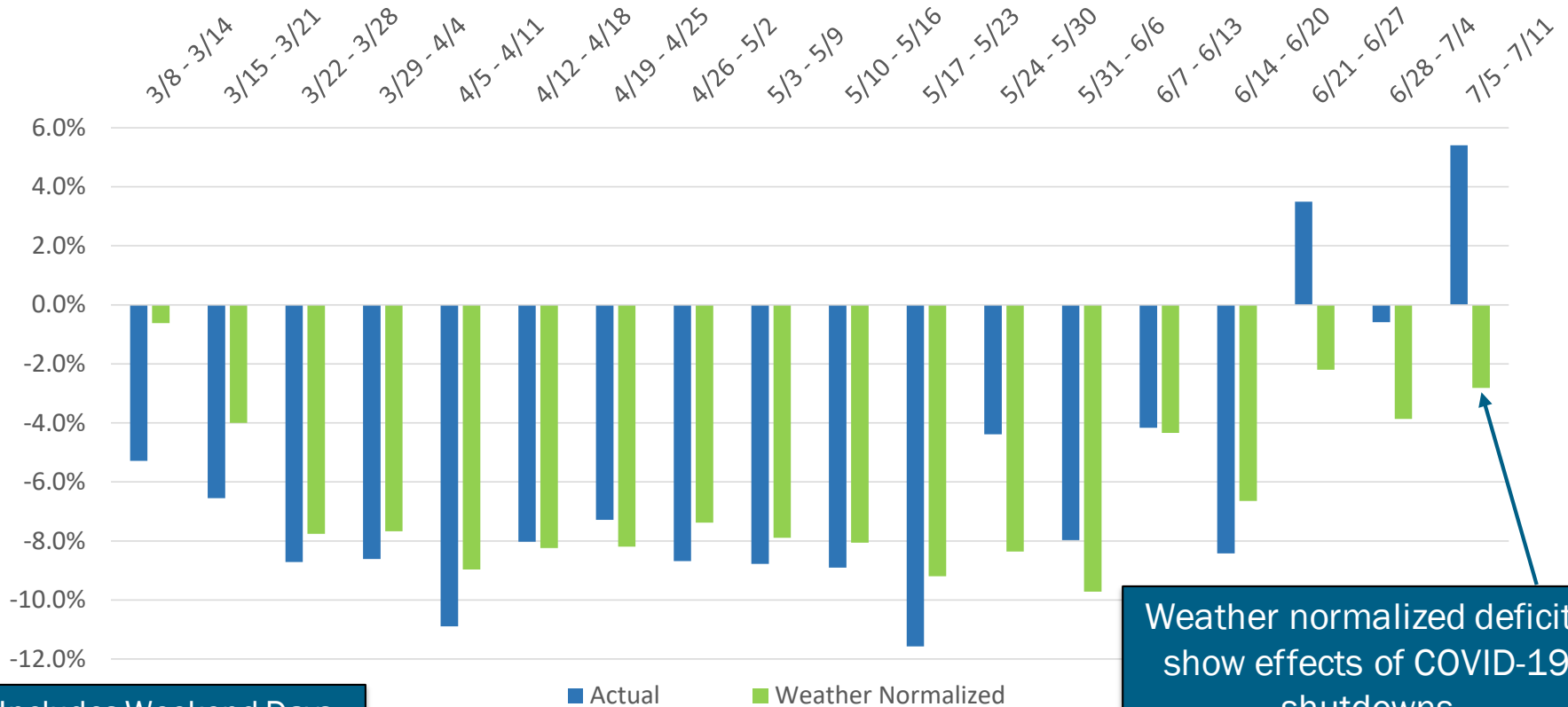
Demand Forecasting & Analysis Team
System & Resource Planning

COVID-19 Tracking Update

July 13, 2020

Recent Impacts on Daily Energy by Week

Weekly Energy Use - % Versus Expected (NYCA)



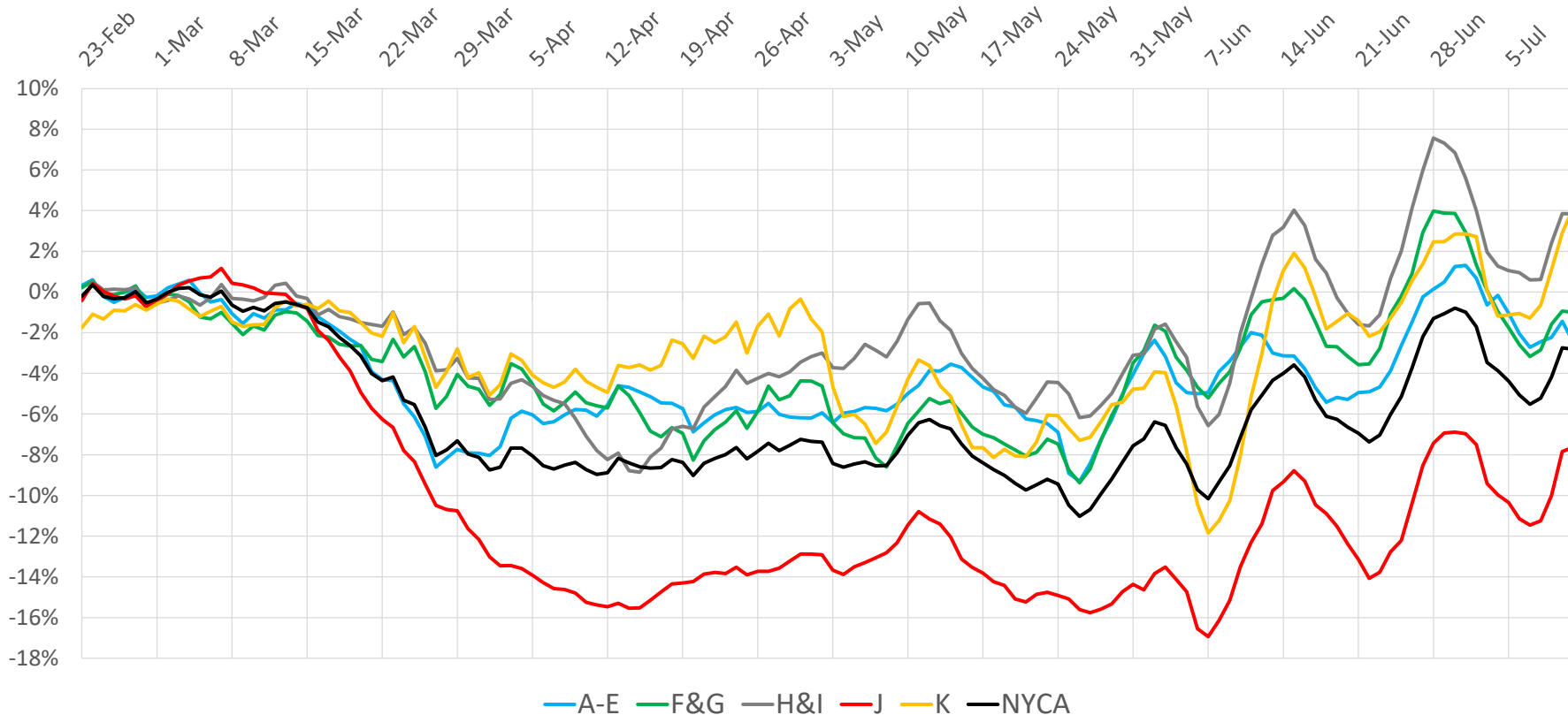
Includes Weekend Days

Actual Weather Normalized

Weather normalized deficits show effects of COVID-19 shutdowns

Regional Impacts on Daily Energy Patterns

2020 Weather Normalized Load Relative to Expected Load, 7-Day Moving Average (Daily Energy)

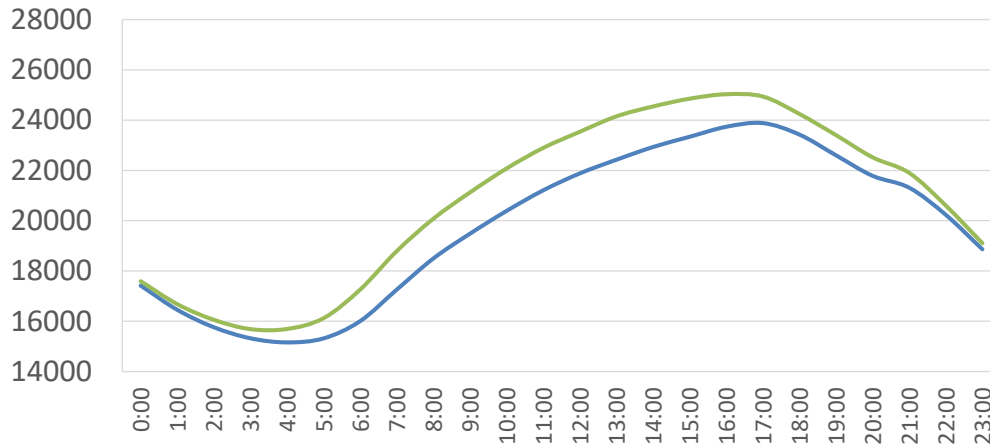


Recent Impacts on Hourly Load Patterns

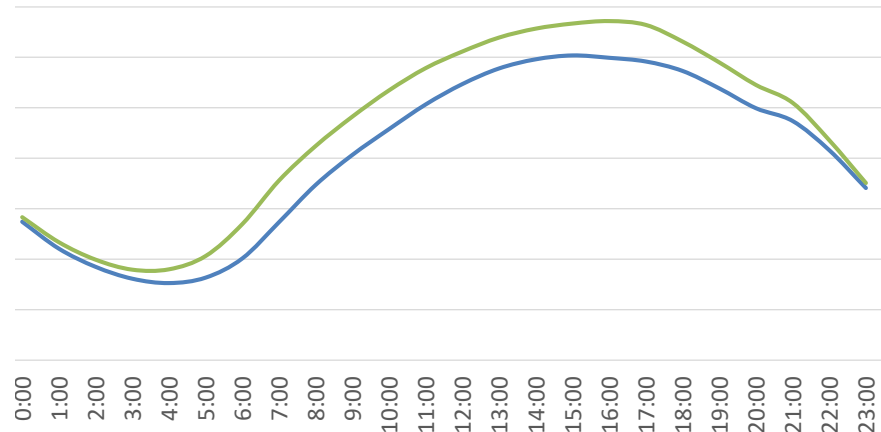
— Actual — Simulated

June 29 - July 3 (MW)

July 6 - July 10 (MW)



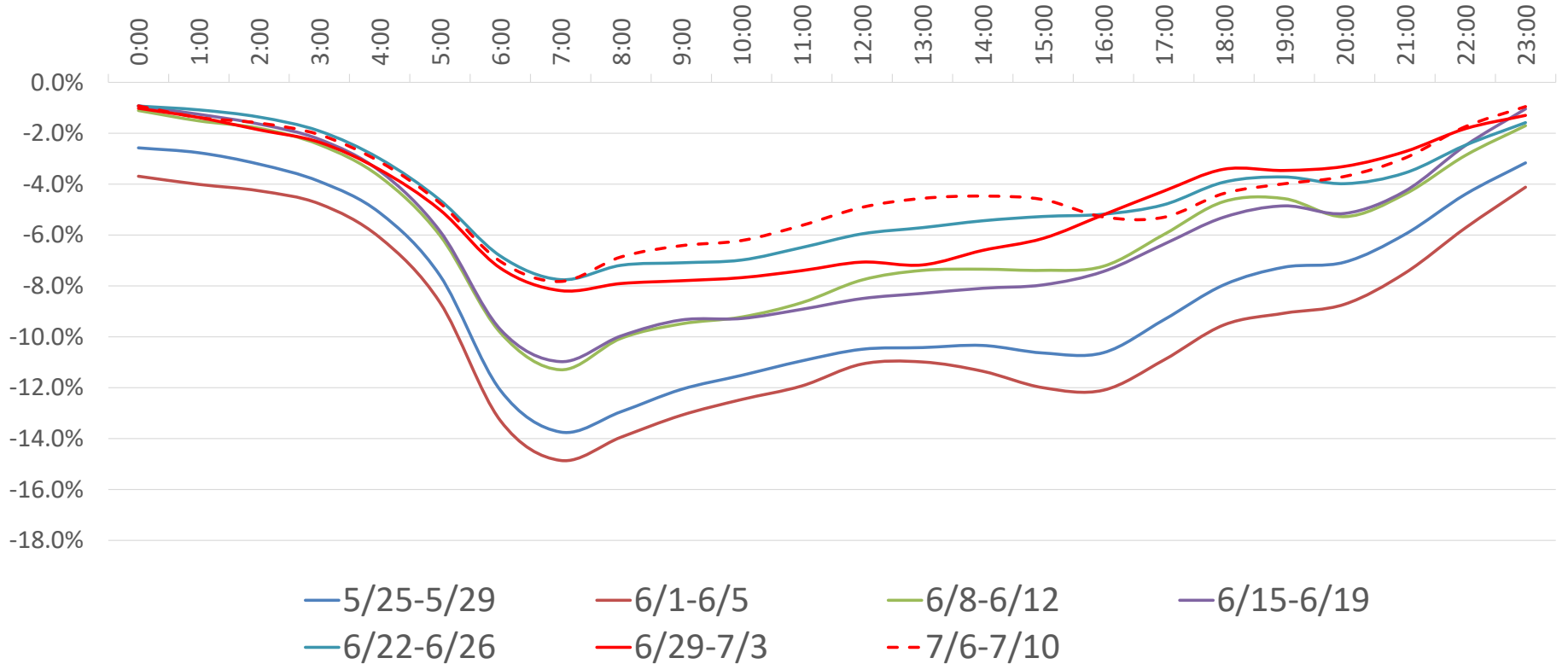
Week 16



Week 17

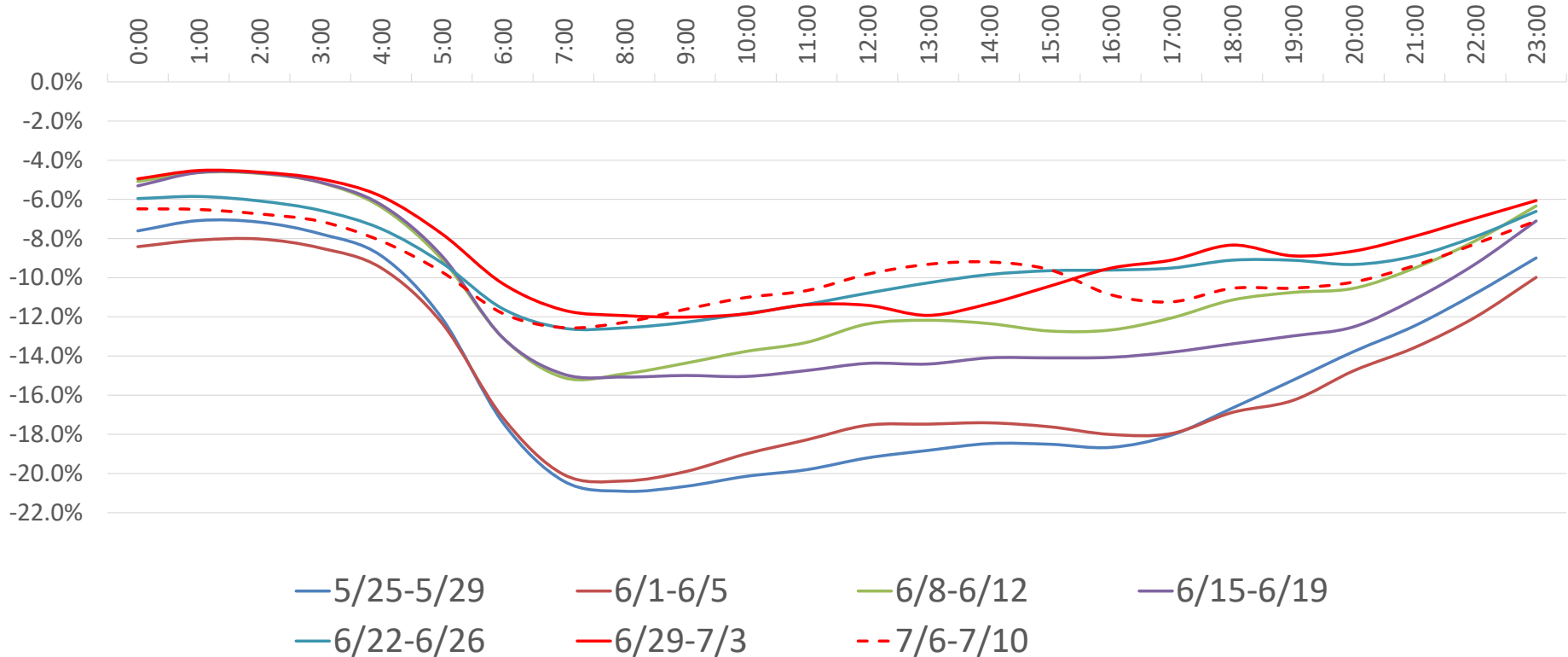
Impacts on Hourly Load Patterns

NYCA Load Profile - Weekday Diurnal Load Changes



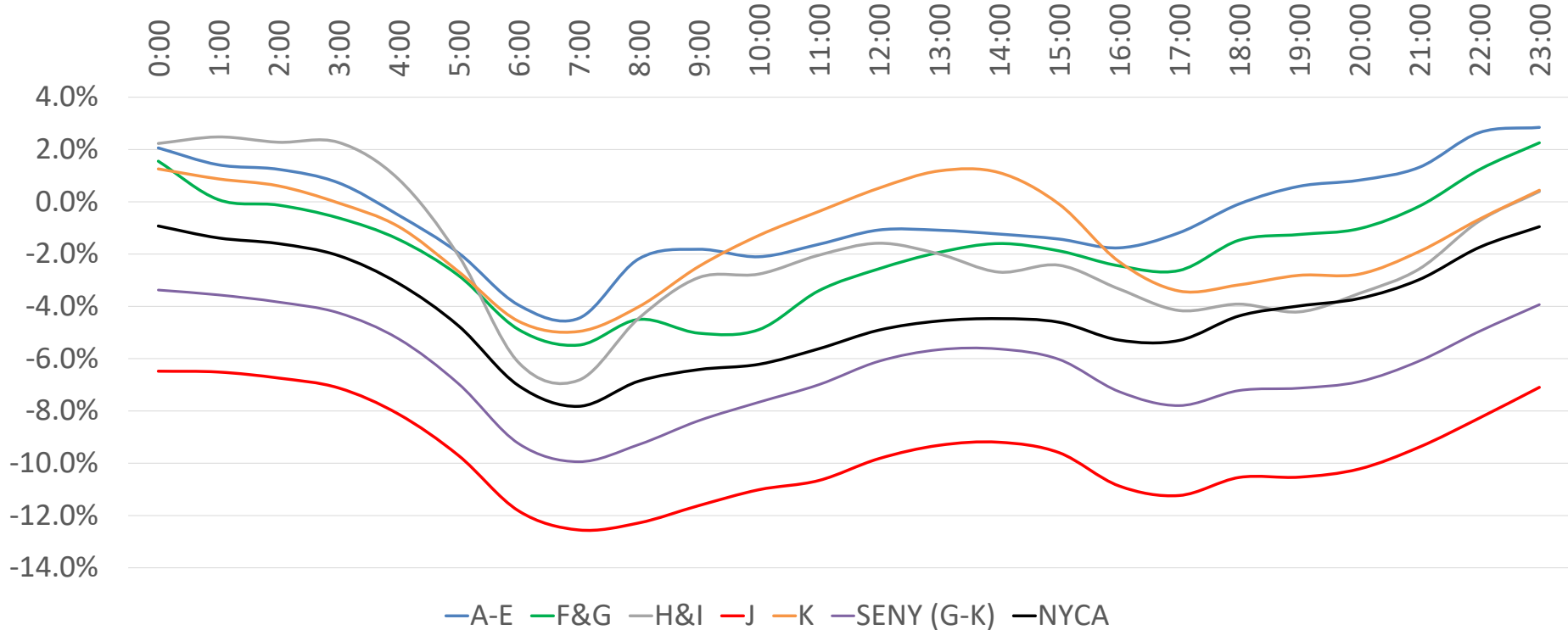
Impacts on Hourly Load Patterns

Zone-J Load Profile - Weekday Diurnal Load Changes



Impacts on Hourly Load Patterns (Area)

Average Hourly Deficit by Area - Week of 7/6- 7/10 (Weekdays)



Impacts on Hourly Load Patterns (Area)

Hour	A-E	F&G	H&I	J	K	SENY (G-K)	NYCA
0:00	2.1%	1.6%	2.2%	-6.5%	1.3%	-3.4%	-0.9%
1:00	1.4%	0.1%	2.5%	-6.5%	0.9%	-3.6%	-1.4%
2:00	1.2%	-0.1%	2.3%	-6.7%	0.6%	-3.8%	-1.6%
3:00	0.7%	-0.6%	2.3%	-7.1%	0.0%	-4.2%	-2.1%
4:00	-0.5%	-1.4%	0.9%	-8.1%	-0.9%	-5.2%	-3.1%
5:00	-2.0%	-2.8%	-2.1%	-9.7%	-2.7%	-7.0%	-4.7%
6:00	-4.0%	-4.9%	-6.1%	-11.8%	-4.6%	-9.2%	-7.0%
7:00	-4.5%	-5.5%	-6.8%	-12.6%	-5.0%	-9.9%	-7.8%
8:00	-2.2%	-4.5%	-4.5%	-12.3%	-4.0%	-9.3%	-6.9%
9:00	-1.8%	-5.0%	-2.9%	-11.6%	-2.5%	-8.4%	-6.4%
10:00	-2.1%	-4.9%	-2.8%	-11.0%	-1.3%	-7.7%	-6.2%
11:00	-1.6%	-3.4%	-2.0%	-10.7%	-0.4%	-7.0%	-5.6%
12:00	-1.1%	-2.6%	-1.6%	-9.8%	0.5%	-6.1%	-4.9%
13:00	-1.1%	-1.9%	-2.0%	-9.3%	1.2%	-5.7%	-4.6%
14:00	-1.2%	-1.6%	-2.7%	-9.2%	1.1%	-5.6%	-4.5%
15:00	-1.4%	-1.9%	-2.4%	-9.6%	-0.1%	-6.0%	-4.6%
16:00	-1.8%	-2.4%	-3.3%	-10.9%	-2.3%	-7.3%	-5.3%
17:00	-1.2%	-2.6%	-4.2%	-11.2%	-3.4%	-7.8%	-5.3%
18:00	-0.1%	-1.5%	-3.9%	-10.5%	-3.2%	-7.2%	-4.4%
19:00	0.6%	-1.3%	-4.2%	-10.5%	-2.8%	-7.1%	-4.0%
20:00	0.8%	-1.0%	-3.5%	-10.2%	-2.8%	-6.9%	-3.7%
21:00	1.3%	-0.2%	-2.6%	-9.4%	-1.9%	-6.1%	-3.0%
22:00	2.6%	1.2%	-0.7%	-8.3%	-0.7%	-5.0%	-1.7%
23:00	2.8%	2.3%	0.4%	-7.1%	0.4%	-3.9%	-0.9%

Average Hourly
Load Deficit
By Area
Week of
7/6 - 7/10

Impacts on Hourly Load Patterns (Zone)

Hour	A	B	C	D	E	F	G	H	I	J	K
0:00	-2%	6%	3%	0%	5%	4%	-1%	4%	1%	-6%	1%
1:00	-3%	6%	2%	-3%	5%	2%	-2%	4%	2%	-7%	1%
2:00	-3%	6%	2%	-3%	5%	1%	-2%	4%	1%	-7%	1%
3:00	-3%	5%	2%	-4%	4%	1%	-2%	4%	2%	-7%	0%
4:00	-4%	4%	0%	-5%	3%	0%	-3%	3%	0%	-8%	-1%
5:00	-5%	2%	-1%	-5%	0%	-2%	-5%	-1%	-3%	-10%	-3%
6:00	-7%	-1%	-3%	-4%	-2%	-3%	-7%	-5%	-7%	-12%	-5%
7:00	-8%	-2%	-3%	-6%	-2%	-3%	-8%	-4%	-8%	-13%	-5%
8:00	-5%	0%	-1%	-4%	-1%	-2%	-8%	-1%	-6%	-12%	-4%
9:00	-5%	1%	0%	-2%	-1%	-3%	-8%	1%	-5%	-12%	-2%
10:00	-6%	1%	-1%	-3%	-1%	-3%	-8%	0%	-4%	-11%	-1%
11:00	-5%	2%	0%	-3%	-1%	-1%	-6%	1%	-3%	-11%	0%
12:00	-4%	2%	0%	-6%	0%	0%	-5%	1%	-3%	-10%	1%
13:00	-4%	2%	0%	-7%	1%	1%	-5%	-1%	-3%	-9%	1%
14:00	-3%	1%	1%	-9%	0%	1%	-5%	-2%	-3%	-9%	1%
15:00	-4%	0%	1%	-9%	0%	0%	-4%	-1%	-3%	-10%	0%
16:00	-4%	0%	1%	-10%	0%	-1%	-4%	-2%	-4%	-11%	-2%
17:00	-3%	1%	1%	-10%	1%	-2%	-4%	-2%	-5%	-11%	-3%
18:00	-2%	2%	1%	-9%	3%	0%	-3%	-3%	-4%	-11%	-3%
19:00	-2%	4%	2%	-10%	4%	0%	-2%	-3%	-5%	-11%	-3%
20:00	-3%	5%	4%	-10%	4%	0%	-2%	-3%	-4%	-10%	-3%
21:00	-2%	5%	4%	-11%	5%	1%	-2%	-3%	-2%	-9%	-2%
22:00	-1%	6%	4%	-4%	5%	3%	-1%	-1%	-1%	-8%	-1%
23:00	0%	7%	4%	-5%	5%	4%	0%	1%	0%	-7%	0%

Average Hourly Load Deficit by Zone, Week of 7/6 - 7/10

Our mission, in collaboration with our stakeholders, is to serve the public interest and provide benefit to consumers by:

- Maintaining and enhancing regional reliability
- Operating open, fair and competitive wholesale electricity markets
- Planning the power system for the future
- Providing factual information to policymakers, stakeholders and investors in the power system

