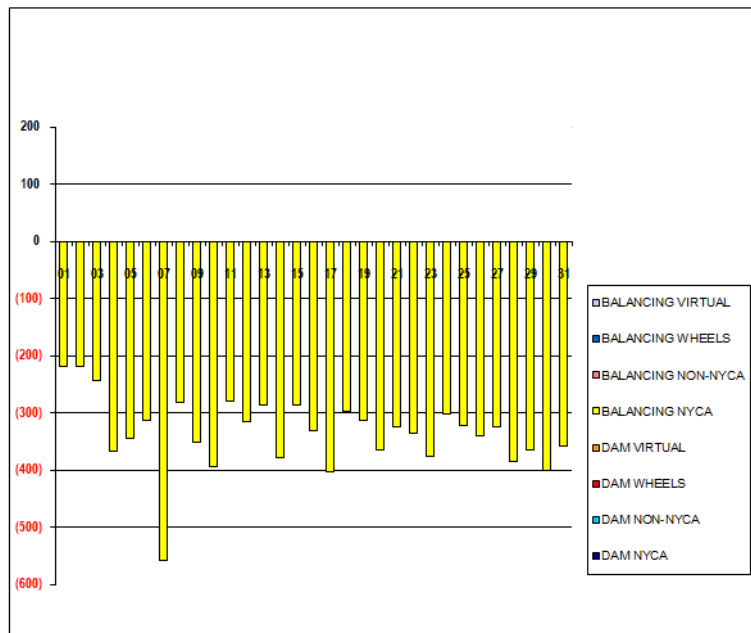


SETTLEMENTS REPORT
 January 2020 Settlement Adjustment
 June 5, 2020

Settlement Adjustment – Market Supply Delta Analysis

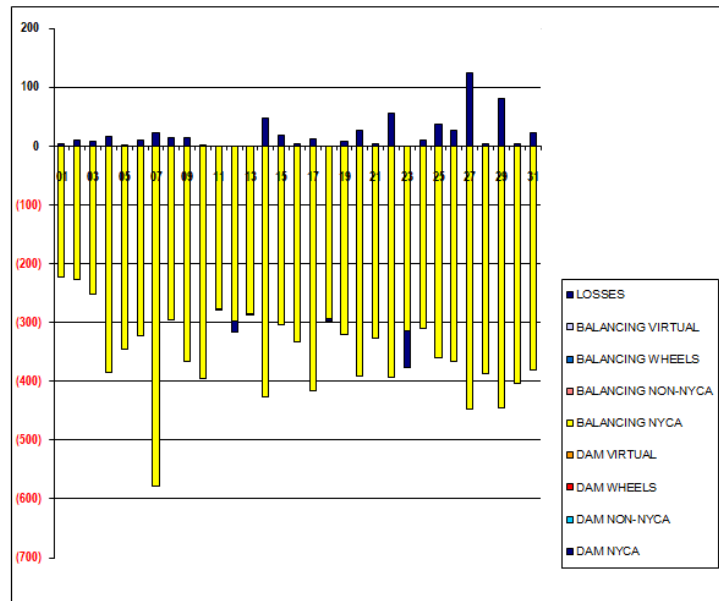
	MONDAY	TUESDAY	WEDNESDAY	THURSDAY	FRIDAY	SATURDAY	SUNDAY
			1	2	3	4	5
DAM NYCA			0	0	0	0	0
DAM NON-NYCA			0	0	0	0	0
DAM WHEELS			0	0	0	0	0
DAM VIRTUAL			0	0	0	0	0
BALANCING NYCA			(220)	(219)	(245)	(368)	(344)
BALANCING NON-NYCA			0	0	0	0	0
BALANCING WHEELS			0	0	0	0	0
BALANCING VIRTUAL			0	0	0	0	0
	6	7	8	9	10	11	12
DAM NYCA	0	0	0	0	0	0	0
DAM NON-NYCA	0	0	0	0	0	0	0
DAM WHEELS	0	0	0	0	0	0	0
DAM VIRTUAL	0	0	0	0	0	0	0
BALANCING NYCA	(314)	(558)	(282)	(352)	(394)	(279)	(316)
BALANCING NON-NYCA	0	0	0	0	0	0	0
BALANCING WHEELS	0	0	0	0	0	0	0
BALANCING VIRTUAL	0	0	0	0	0	0	0
	13	14	15	16	17	18	19
DAM NYCA	0	0	0	0	0	0	0
DAM NON-NYCA	0	0	0	0	0	0	0
DAM WHEELS	0	0	0	0	0	0	0
DAM VIRTUAL	0	0	0	0	0	0	0
BALANCING NYCA	(286)	(379)	(286)	(331)	(404)	(298)	(314)
BALANCING NON-NYCA	0	0	0	0	0	0	0
BALANCING WHEELS	0	0	0	0	0	0	0
BALANCING VIRTUAL	0	0	0	0	0	0	0
	20	21	22	23	24	25	26
DAM NYCA	0	0	0	0	0	0	0
DAM NON-NYCA	0	0	0	0	0	0	0
DAM WHEELS	0	0	0	0	0	0	0
DAM VIRTUAL	0	0	0	0	0	0	0
BALANCING NYCA	(366)	(325)	(337)	(377)	(301)	(323)	(341)
BALANCING NON-NYCA	0	0	0	0	0	0	0
BALANCING WHEELS	0	0	0	0	0	0	0
BALANCING VIRTUAL	0	0	0	0	0	0	0
	27	28	29	30	31		
DAM NYCA	0	0	0	0	0		
DAM NON-NYCA	0	0	0	0	0		
DAM WHEELS	0	0	0	0	0		
DAM VIRTUAL	0	0	0	0	0		
BALANCING NYCA	(324)	(385)	(366)	(401)	(359)		
BALANCING NON-NYCA	0	0	0	0	0		
BALANCING WHEELS	0	0	0	0	0		
BALANCING VIRTUAL	0	0	0	0	0		



SETTLEMENTS REPORT
 January 2020 Settlement Adjustment
 June 5, 2020

Settlement Adjustment – Market Withdrawals Delta Analysis

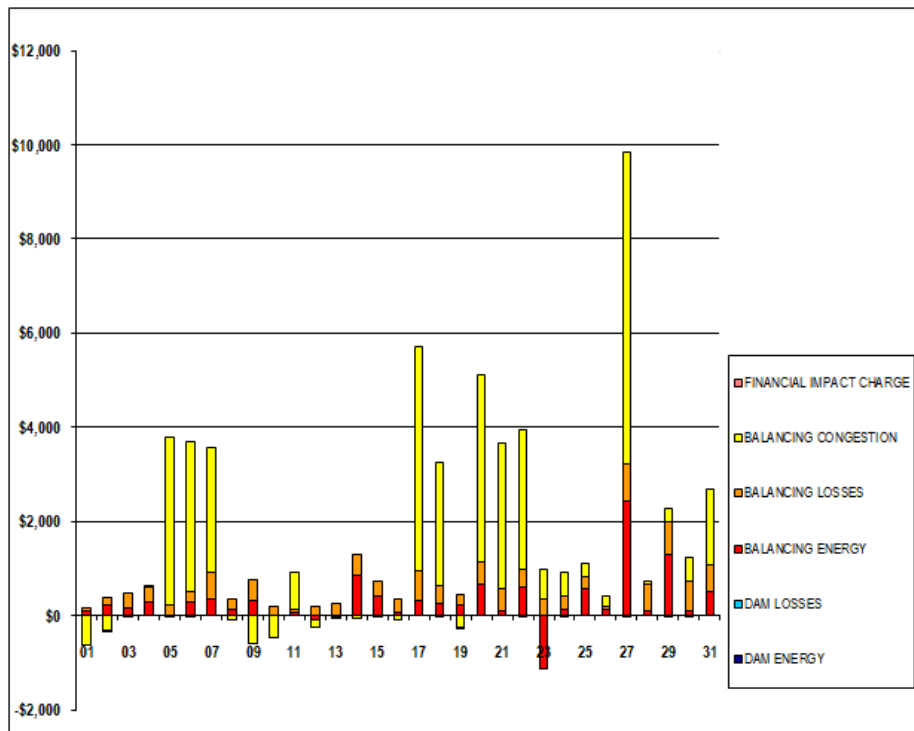
	MONDAY	TUESDAY	WEDNESDAY	THURSDAY	FRIDAY	SATURDAY	SUNDAY
			1	2	3	4	5
DAM NYCA			0	0	0	0	0
DAM NON-NYCA			0	0	0	0	0
DAM WHEELS			0	0	0	0	0
DAM VIRTUAL			0	0	0	0	0
BALANCING NYCA			(223)	(228)	(253)	(385)	(346)
BALANCING NON-NYCA			0	0	0	0	0
BALANCING WHEELS			0	0	0	0	0
BALANCING VIRTUAL			0	0	0	0	0
UFE/LOSSES			3	9	8	17	2
	6	7	8	9	10	11	12
DAM NYCA	0	0	0	0	0	0	0
DAM NON-NYCA	0	0	0	0	0	0	0
DAM WHEELS	0	0	0	0	0	0	0
DAM VIRTUAL	0	0	0	0	0	0	0
BALANCING NYCA	(323)	(579)	(297)	(366)	(396)	(277)	(299)
BALANCING NON-NYCA	0	0	0	0	0	0	0
BALANCING WHEELS	0	0	0	0	0	0	0
BALANCING VIRTUAL	0	0	0	0	0	0	0
UFE/LOSSES	9	22	14	14	2	(2)	(17)
	13	14	15	16	17	18	19
DAM NYCA	0	0	0	0	0	0	0
DAM NON-NYCA	0	0	0	0	0	0	0
DAM WHEELS	0	0	0	0	0	0	0
DAM VIRTUAL	0	0	0	0	0	0	0
BALANCING NYCA	(284)	(427)	(304)	(334)	(416)	(294)	(321)
BALANCING NON-NYCA	0	0	0	0	0	0	0
BALANCING WHEELS	0	0	0	0	0	0	0
BALANCING VIRTUAL	0	0	0	0	0	0	0
UFE/LOSSES	(1)	47	18	3	12	(5)	7
	20	21	22	23	24	25	26
DAM NYCA	0	0	0	0	0	0	0
DAM NON-NYCA	0	0	0	0	0	0	0
DAM WHEELS	0	0	0	0	0	0	0
DAM VIRTUAL	0	0	0	0	0	0	0
BALANCING NYCA	(392)	(328)	(392)	(315)	(311)	(361)	(367)
BALANCING NON-NYCA	0	0	0	0	0	0	0
BALANCING WHEELS	0	0	0	0	0	0	0
BALANCING VIRTUAL	0	0	0	0	0	0	0
UFE/LOSSES	26	3	56	(62)	9	38	26
	27	28	29	30	31		
DAM NYCA	0	0	0	0	0		
DAM NON-NYCA	0	0	0	0	0		
DAM WHEELS	0	0	0	0	0		
DAM VIRTUAL	0	0	0	0	0		
BALANCING NYCA	(447)	(388)	(446)	(404)	(381)		
BALANCING NON-NYCA	0	0	0	0	0		
BALANCING WHEELS	0	0	0	0	0		
BALANCING VIRTUAL	0	0	0	0	0		
UFE/LOSSES	124	3	80	3	22		



SETTLEMENTS REPORT
January 2020 Settlement Adjustment
June 5, 2020

Settlement Adjustment – Market Residuals Delta Analysis

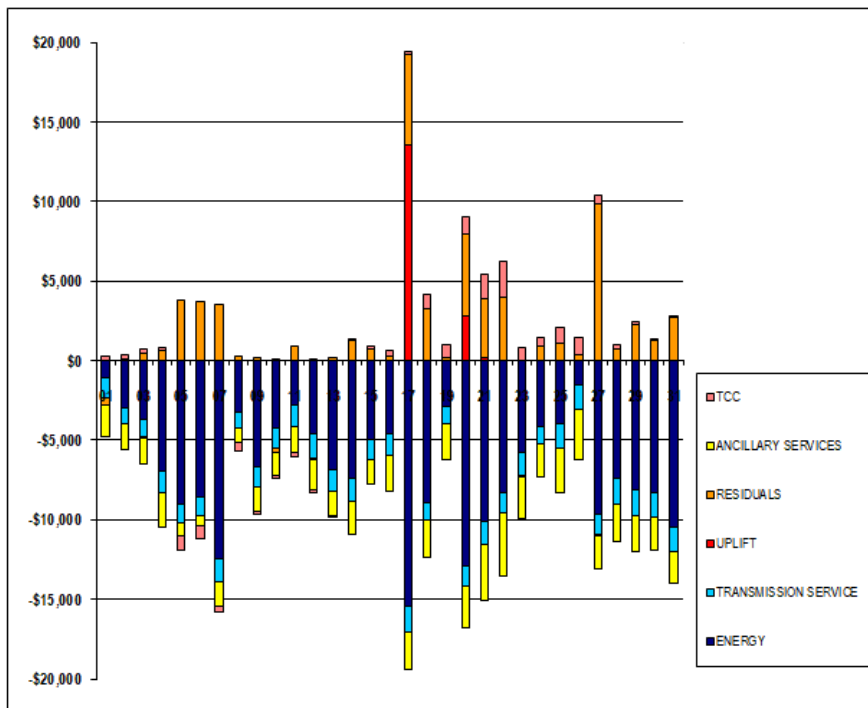
	MONDAY	TUESDAY	WEDNESDAY	THURSDAY	FRIDAY	SATURDAY	SUNDAY
			1	2	3	4	5
DAM ENERGY			\$0.00	\$0.00	\$0.00	\$0.00	\$0.00
DAM LOSSES			\$0.00	\$0.00	\$0.00	\$0.00	\$0.00
BALANCING ENERGY			\$91.92	\$221.06	\$148.11	\$290.46	(\$17.02)
BALANCING LOSSES			\$54.35	\$171.47	\$325.10	\$289.16	\$233.24
BALANCING CONGESTION			(\$621.77)	(\$320.65)	(\$36.61)	\$7.50	\$3,552.90
FINANCIAL IMPACT CHARGE			\$0.00	(\$0.01)	\$0.00	\$0.00	\$0.00
	6	7	8	9	10	11	12
DAM ENERGY	(\$0.01)	\$0.00	\$0.00	\$0.00	\$0.00	\$0.00	\$0.00
DAM LOSSES	\$0.00	\$0.00	(\$0.01)	(\$0.01)	\$0.01	\$0.00	\$0.01
BALANCING ENERGY	\$274.64	\$351.76	\$118.42	\$322.80	\$17.40	\$54.32	(\$90.05)
BALANCING LOSSES	\$228.83	\$572.07	\$237.75	\$449.89	\$186.86	\$76.10	\$203.82
BALANCING CONGESTION	\$3,188.11	\$2,634.15	(\$99.37)	(\$607.56)	(\$469.70)	\$779.51	(\$158.61)
FINANCIAL IMPACT CHARGE	\$0.00	\$0.00	\$0.00	\$0.00	\$0.00	\$0.00	\$0.00
	13	14	15	16	17	18	19
DAM ENERGY	\$0.01	\$0.00	\$0.00	\$0.00	\$0.00	(\$0.01)	\$0.00
DAM LOSSES	(\$0.01)	(\$0.01)	(\$0.01)	(\$0.01)	\$0.00	\$0.00	(\$0.01)
BALANCING ENERGY	(\$38.47)	\$853.57	\$403.88	\$57.59	\$316.14	\$248.11	\$218.03
BALANCING LOSSES	\$265.37	\$454.55	\$338.07	\$285.82	\$644.37	\$393.89	\$216.92
BALANCING CONGESTION	(\$19.42)	(\$59.63)	(\$1.98)	(\$84.28)	\$4,741.25	\$2,601.14	(\$259.14)
FINANCIAL IMPACT CHARGE	\$0.00	\$0.00	\$0.00	\$0.00	\$0.00	\$0.00	(\$0.06)
	20	21	22	23	24	25	26
DAM ENERGY	\$0.00	\$0.01	\$0.00	\$0.00	\$0.00	\$0.00	\$0.00
DAM LOSSES	\$0.00	\$0.00	(\$0.01)	\$0.00	\$0.00	\$0.01	\$0.00
BALANCING ENERGY	\$665.13	\$106.44	\$616.85	(\$1,119.85)	\$129.91	\$584.38	\$114.90
BALANCING LOSSES	\$471.75	\$460.79	\$378.01	\$356.75	\$284.31	\$226.92	\$66.20
BALANCING CONGESTION	\$3,966.04	\$3,108.44	\$2,941.52	\$611.91	\$493.68	\$298.28	\$219.30
FINANCIAL IMPACT CHARGE	\$0.00	\$0.00	\$0.00	\$0.00	(\$0.01)	\$0.00	\$0.00
	27	28	29	30	31		
DAM ENERGY	(\$0.01)	\$0.00	\$0.00	\$0.00	\$0.00		
DAM LOSSES	\$0.00	\$0.00	(\$0.01)	(\$0.01)	\$0.00		
BALANCING ENERGY	\$2,438.17	\$106.33	\$1,297.70	\$94.36	\$495.55		
BALANCING LOSSES	\$770.46	\$544.58	\$687.56	\$619.84	\$594.47		
BALANCING CONGESTION	\$6,639.01	\$83.16	\$287.19	\$516.29	\$1,602.50		
FINANCIAL IMPACT CHARGE	\$0.00	\$0.00	\$0.00	\$0.00	\$0.00		



SETTLEMENTS REPORT
January 2020 Settlement Adjustment
June 5, 2020

Settlement Adjustment – Market Costs Delta Analysis

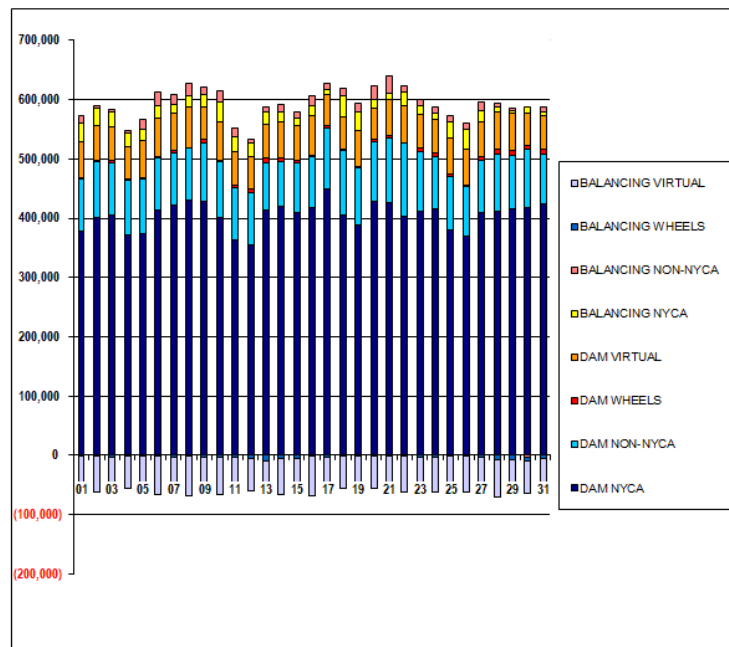
	MONDAY	TUESDAY	WEDNESDAY	THURSDAY	FRIDAY	SATURDAY	SUNDAY
ENERGY			1	2	3	4	5
TRANSMISSION SERVICE			(\$1,096.94)	(\$2,947.37)	(\$3,732.14)	(\$6,946.42)	(\$9,001.02)
UPLIFT			(\$1,242.31)	(\$1,009.53)	(\$1,035.57)	(\$1,403.96)	(\$1,215.45)
RESIDUALS			\$0.11	(\$0.12)	(\$104.01)	\$1.65	\$8.80
ANCILLARY SERVICES			(\$475.50)	\$71.87	\$436.60	\$597.12	\$3,769.12
TCC			(\$1,933.80)	(\$1,604.60)	(\$1,626.77)	(\$2,101.43)	(\$834.40)
			\$293.73	\$306.93	\$276.45	\$250.11	(\$849.63)
	6	7	8	9	10	11	12
ENERGY	(\$8,559.12)	(\$12,464.60)	(\$3,214.73)	(\$6,672.50)	(\$4,250.35)	(\$2,777.74)	(\$4,592.06)
TRANSMISSION SERVICE	(\$1,150.32)	(\$1,415.82)	(\$1,050.68)	(\$1,284.82)	(\$1,221.73)	(\$1,406.63)	(\$1,578.09)
UPLIFT	\$0.14	\$0.04	(\$2.61)	\$11.39	\$0.06	(\$0.07)	\$0.57
RESIDUALS	\$3,691.57	\$3,557.98	\$256.79	\$165.12	(\$265.43)	\$909.93	(\$44.83)
ANCILLARY SERVICES	(\$667.90)	(\$1,596.00)	(\$914.84)	(\$1,553.76)	(\$1,460.41)	(\$1,569.04)	(\$1,922.33)
TCC	(\$850.89)	(\$320.01)	(\$494.28)	(\$148.50)	(\$206.04)	(\$293.34)	(\$166.47)
	13	14	15	16	17	18	19
ENERGY	(\$6,894.65)	(\$7,411.98)	(\$5,003.58)	(\$4,567.81)	(\$15,454.72)	(\$8,902.18)	(\$2,872.72)
TRANSMISSION SERVICE	(\$1,295.87)	(\$1,445.11)	(\$1,204.24)	(\$1,404.37)	(\$1,604.06)	(\$1,078.95)	(\$1,081.00)
UPLIFT	\$0.64	\$0.00	\$1.93	\$0.01	\$13,504.28	\$0.05	(\$0.71)
RESIDUALS	\$207.48	\$1,248.48	\$739.96	\$259.12	\$5,701.76	\$3,243.13	\$175.74
ANCILLARY SERVICES	(\$1,584.25)	(\$2,043.49)	(\$1,590.89)	(\$2,242.51)	(\$2,327.21)	(\$2,376.30)	(\$2,267.63)
TCC	(\$15.09)	\$110.73	\$155.61	\$374.52	\$240.60	\$894.81	\$829.86
	20	21	22	23	24	25	26
ENERGY	(\$12,880.02)	(\$10,157.16)	(\$8,277.25)	(\$5,819.28)	(\$4,133.01)	(\$3,980.83)	(\$1,521.35)
TRANSMISSION SERVICE	(\$1,298.01)	(\$1,421.92)	(\$1,311.53)	(\$1,362.52)	(\$1,135.26)	(\$1,554.19)	(\$1,548.11)
UPLIFT	\$2,817.46	\$164.99	\$18.30	\$8.75	\$2.82	\$2.50	\$1.04
RESIDUALS	\$5,102.92	\$3,675.68	\$3,936.37	(\$151.19)	\$907.89	\$1,109.59	\$400.40
ANCILLARY SERVICES	(\$2,625.83)	(\$3,465.75)	(\$3,971.69)	(\$2,632.18)	(\$2,009.86)	(\$2,813.95)	(\$3,168.75)
TCC	\$1,074.72	\$1,609.29	\$2,299.50	\$788.40	\$508.50	\$951.42	\$1,054.83
	27	28	29	30	31		
ENERGY	(\$9,673.65)	(\$7,392.73)	(\$8,154.20)	(\$8,267.18)	(\$10,478.54)		
TRANSMISSION SERVICE	(\$1,246.06)	(\$1,591.48)	(\$1,565.94)	(\$1,583.43)	(\$1,520.94)		
UPLIFT	(\$61.34)	\$0.06	(\$0.26)	(\$0.01)	(\$0.42)		
RESIDUALS	\$9,847.63	\$734.07	\$2,272.44	\$1,230.48	\$2,692.52		
ANCILLARY SERVICES	(\$2,102.44)	(\$2,348.23)	(\$2,304.30)	(\$2,107.47)	(\$2,029.12)		
TCC	\$492.84	\$267.93	\$197.76	\$5.49	\$1.50		



SETTLEMENTS REPORT
January 2020 Settlement Adjustment
June 5, 2020

Initial Settlement – Market Supply Analysis

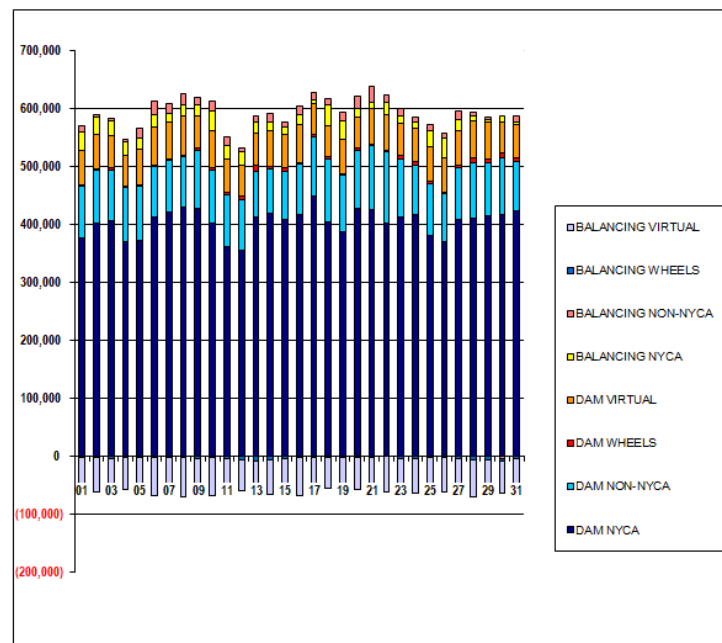
	MONDAY	TUESDAY	WEDNESDAY	THURSDAY	FRIDAY	SATURDAY	SUNDAY
			1	2	3	4	5
DAM NYCA			377,531	402,083	406,150	371,835	374,005
DAM NON-NYCA			89,497	92,589	87,717	92,229	92,602
DAM WHEELS			2,007	2,002	4,296	2,447	2,654
DAM VIRTUAL			60,413	60,461	56,727	54,541	62,382
BALANCING NYCA			32,033	29,437	25,358	22,913	18,194
BALANCING NON-NYCA			10,850	2,890	3,679	4,682	17,944
BALANCING WHEELS			(1,407)	(1,402)	(3,696)	(1,847)	(2,054)
BALANCING VIRTUAL			(60,413)	(60,461)	(56,727)	(54,541)	(62,382)
	6	7	8	9	10	11	12
DAM NYCA	413,024	421,899	430,434	428,281	402,224	363,448	355,823
DAM NON-NYCA	86,043	88,756	87,540	99,491	92,803	88,896	88,364
DAM WHEELS	2,280	2,890	1,426	4,519	2,902	3,253	5,934
DAM VIRTUAL	64,859	63,579	67,881	55,591	64,485	57,662	53,923
BALANCING NYCA	21,361	15,266	19,962	19,896	33,795	23,646	22,636
BALANCING NON-NYCA	23,381	17,255	19,516	13,627	18,745	15,887	6,737
BALANCING WHEELS	(1,680)	(2,340)	(826)	(3,859)	(2,302)	(2,653)	(5,334)
BALANCING VIRTUAL	(64,859)	(63,579)	(67,881)	(55,591)	(64,485)	(57,662)	(53,923)
	13	14	15	16	17	18	19
DAM NYCA	413,698	419,189	409,912	417,280	448,946	405,309	387,997
DAM NON-NYCA	79,522	77,358	82,876	87,101	103,896	109,361	97,552
DAM WHEELS	9,108	5,330	5,135	2,711	2,981	2,293	2,462
DAM VIRTUAL	56,476	60,521	58,854	65,978	53,851	53,483	59,218
BALANCING NYCA	19,733	15,968	12,661	16,729	6,977	39,168	32,252
BALANCING NON-NYCA	9,577	13,959	9,249	16,391	11,447	11,826	15,371
BALANCING WHEELS	(8,508)	(4,730)	(4,535)	(1,911)	(2,581)	(1,093)	(1,262)
BALANCING VIRTUAL	(56,476)	(60,521)	(58,854)	(65,978)	(53,851)	(53,483)	(59,218)
	20	21	22	23	24	25	26
DAM NYCA	428,042	426,136	402,737	412,640	416,799	381,104	369,983
DAM NON-NYCA	101,056	110,106	123,723	100,159	86,947	90,201	83,198
DAM WHEELS	3,191	3,291	1,539	6,500	5,757	2,961	3,242
DAM VIRTUAL	54,395	60,515	61,666	55,460	58,131	60,382	59,527
BALANCING NYCA	13,853	11,118	23,017	14,815	10,001	27,969	34,468
BALANCING NON-NYCA	21,949	28,616	11,017	11,362	9,443	11,414	9,250
BALANCING WHEELS	(1,991)	(1,341)	(175)	(4,100)	(4,157)	(1,761)	(2,092)
BALANCING VIRTUAL	(54,395)	(60,515)	(61,666)	(55,460)	(58,131)	(60,382)	(59,527)
	27	28	29	30	31		
DAM NYCA	409,840	412,106	415,472	417,794	423,680		
DAM NON-NYCA	88,084	95,342	91,217	98,532	85,288		
DAM WHEELS	6,132	8,830	7,706	7,067	6,816		
DAM VIRTUAL	59,195	63,514	62,601	54,953	58,303		
BALANCING NYCA	18,422	8,006	4,741	9,922	4,462		
BALANCING NON-NYCA	15,514	6,477	4,248	(2,770)	9,272		
BALANCING WHEELS	(4,227)	(6,852)	(6,506)	(5,867)	(4,566)		
BALANCING VIRTUAL	(59,195)	(63,514)	(62,601)	(54,953)	(58,303)		



SETTLEMENTS REPORT
January 2020 Settlement Adjustment
June 5, 2020

4-Month Settlement Adjustment – Market Supply Analysis

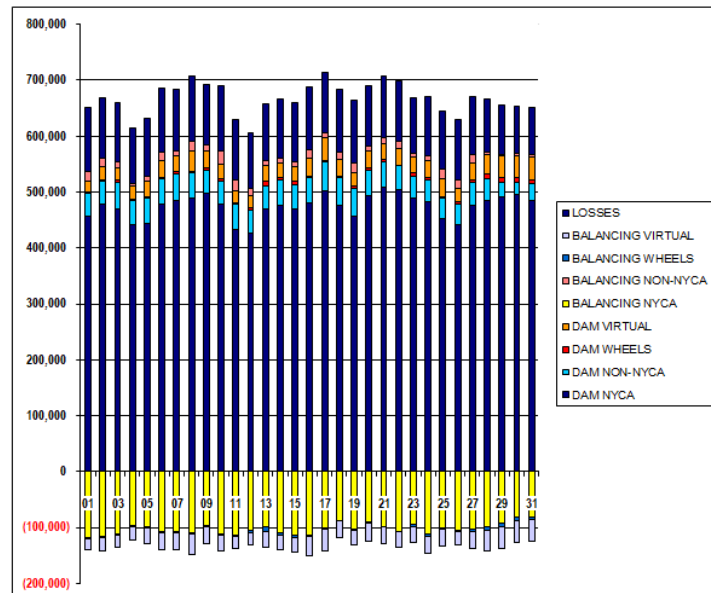
	MONDAY	TUESDAY	WEDNESDAY	THURSDAY	FRIDAY	SATURDAY	SUNDAY
			1	2	3	4	5
DAM NYCA			377,531	402,083	406,150	371,835	374,005
DAM NON-NYCA			89,497	92,589	87,717	92,229	92,602
DAM WHEELS			2,007	2,002	4,296	2,447	2,654
DAM VIRTUAL			60,413	60,461	56,727	54,541	62,382
BALANCING NYCA			31,814	29,218	25,113	22,545	17,850
BALANCING NON-NYCA			10,850	2,890	3,679	4,682	17,944
BALANCING WHEELS			(1,407)	(1,402)	(3,696)	(1,847)	(2,054)
BALANCING VIRTUAL			(60,413)	(60,461)	(56,727)	(54,541)	(62,382)
	6	7	8	9	10	11	12
DAM NYCA	413,024	421,899	430,434	428,281	402,224	363,448	355,823
DAM NON-NYCA	88,043	88,756	87,540	99,491	92,803	88,896	88,364
DAM WHEELS	2,280	2,890	1,426	4,519	2,902	3,253	5,934
DAM VIRTUAL	64,859	63,579	67,881	55,591	64,485	57,662	53,923
BALANCING NYCA	21,047	14,708	19,679	19,543	33,371	23,367	22,321
BALANCING NON-NYCA	23,381	17,255	19,516	13,627	18,745	15,867	6,737
BALANCING WHEELS	(1,680)	(2,340)	(826)	(3,859)	(2,302)	(2,653)	(5,334)
BALANCING VIRTUAL	(64,859)	(63,579)	(67,881)	(55,591)	(64,485)	(57,662)	(53,923)
	13	14	15	16	17	18	19
DAM NYCA	413,698	419,189	409,912	417,280	448,946	405,309	387,997
DAM NON-NYCA	79,522	77,356	82,876	87,101	103,936	109,361	97,552
DAM WHEELS	9,168	5,300	5,155	2,711	2,981	2,293	2,462
DAM VIRTUAL	56,476	60,521	58,854	65,978	53,851	53,483	59,218
BALANCING NYCA	19,447	15,589	12,375	16,399	6,573	35,870	31,938
BALANCING NON-NYCA	9,577	13,959	9,249	16,381	11,447	11,826	15,371
BALANCING WHEELS	(8,508)	(4,730)	(4,535)	(1,911)	(2,581)	(1,093)	(1,262)
BALANCING VIRTUAL	(56,476)	(60,521)	(58,854)	(65,978)	(53,851)	(53,483)	(59,218)
	20	21	22	23	24	25	26
DAM NYCA	428,042	426,136	402,737	412,640	416,799	381,104	369,983
DAM NON-NYCA	101,056	110,106	123,723	100,159	86,947	90,201	83,198
DAM WHEELS	3,191	3,291	1,539	6,500	5,757	2,961	3,242
DAM VIRTUAL	54,395	60,515	61,866	55,460	58,131	60,382	59,527
BALANCING NYCA	13,487	10,793	22,680	14,438	9,689	27,645	34,127
BALANCING NON-NYCA	21,949	28,616	11,017	11,362	9,443	11,414	9,250
BALANCING WHEELS	(1,991)	(1,341)	(175)	(4,100)	(4,157)	(1,761)	(2,092)
BALANCING VIRTUAL	(54,395)	(60,515)	(61,866)	(55,460)	(58,131)	(60,382)	(59,527)
	27	28	29	30	31		
DAM NYCA	409,840	412,106	415,472	417,794	423,680		
DAM NON-NYCA	88,084	95,342	91,217	98,532	85,288		
DAM WHEELS	6,132	8,830	7,706	7,067	6,816		
DAM VIRTUAL	59,195	63,514	62,601	54,953	58,303		
BALANCING NYCA	18,098	7,621	4,375	9,521	4,102		
BALANCING NON-NYCA	15,514	6,477	4,248	(2,770)	9,272		
BALANCING WHEELS	(4,227)	(6,852)	(6,506)	(5,867)	(4,566)		
BALANCING VIRTUAL	(59,195)	(63,514)	(62,601)	(54,953)	(58,303)		



SETTLEMENTS REPORT
January 2020 Settlement Adjustment
June 5, 2020

Initial Settlement – Market Withdrawals Analysis

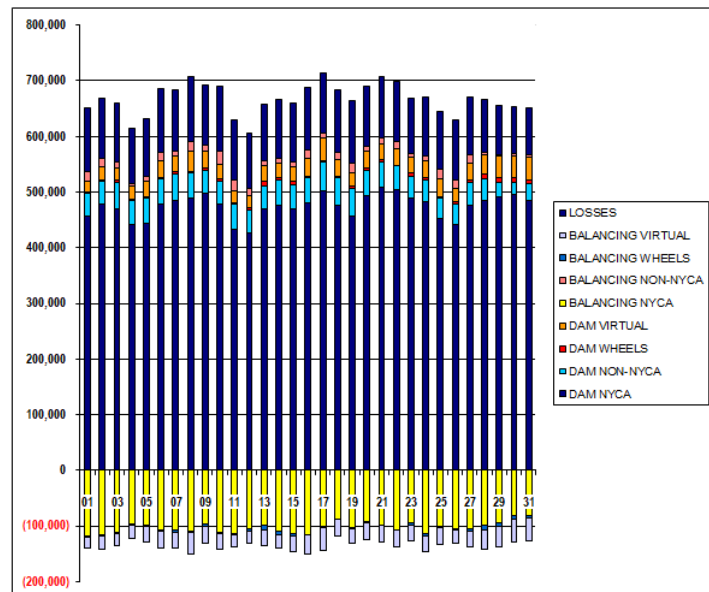
	MONDAY	TUESDAY	WEDNESDAY	THURSDAY	FRIDAY	SATURDAY	SUNDAY
			1	2	3	4	5
DAM NYCA			455,682	478,062	470,166	441,077	444,292
DAM NON-NYCA			41,815	41,371	47,250	42,793	44,439
DAM WHEELS			2,007	2,002	4,296	2,447	2,654
DAM VIRTUAL			19,376	23,955	21,557	23,873	28,349
BALANCING NYCA			(118,929)	(116,457)	(110,976)	(96,188)	(98,827)
BALANCING NON-NYCA			17,415	14,062	10,441	5,558	8,048
BALANCING WHEELS			(1,407)	(1,402)	(3,696)	(1,847)	(2,054)
BALANCING VIRTUAL			(19,376)	(23,955)	(21,557)	(23,873)	(28,349)
UFE/LOSSES			113,928	109,962	106,004	98,419	104,792
	6	7	8	9	10	11	12
DAM NYCA	478,590	484,018	489,995	498,630	478,721	432,696	425,659
DAM NON-NYCA	45,437	48,889	44,584	41,028	41,263	44,966	41,146
DAM WHEELS	2,280	2,890	1,426	4,519	2,902	3,253	5,934
DAM VIRTUAL	30,532	29,153	38,479	29,970	27,434	21,836	21,140
BALANCING NYCA	(107,360)	(107,814)	(110,120)	(95,973)	(111,845)	(113,065)	(104,782)
BALANCING NON-NYCA	13,819	7,987	16,975	10,477	22,418	18,179	12,324
BALANCING WHEELS	(1,680)	(2,340)	(629)	(3,659)	(2,302)	(2,653)	(5,334)
BALANCING VIRTUAL	(30,532)	(29,153)	(38,479)	(29,970)	(27,434)	(21,836)	(21,140)
UFE/LOSSES	115,323	110,096	116,017	107,133	116,980	108,102	99,212
	13	14	15	16	17	18	19
DAM NYCA	469,552	475,704	469,326	480,229	501,331	476,524	457,724
DAM NON-NYCA	41,319	45,306	44,293	44,871	51,849	48,653	49,555
DAM WHEELS	9,108	5,330	5,135	2,711	2,981	2,293	2,462
DAM VIRTUAL	28,092	24,552	27,142	33,602	40,553	30,483	25,448
BALANCING NYCA	(98,856)	(110,180)	(113,500)	(114,744)	(99,923)	(87,421)	(103,523)
BALANCING NON-NYCA	7,848	8,728	8,974	14,812	8,671	12,492	16,681
BALANCING WHEELS	(6,508)	(4,730)	(4,535)	(1,911)	(2,581)	(1,093)	(1,262)
BALANCING VIRTUAL	(28,092)	(24,552)	(27,142)	(33,602)	(40,553)	(30,483)	(25,448)
UFE/LOSSES	102,666	106,914	105,606	112,333	109,377	112,416	112,735
	20	21	22	23	24	25	26
DAM NYCA	492,464	509,278	503,473	489,384	481,961	452,540	440,707
DAM NON-NYCA	46,766	45,023	42,979	38,678	39,126	36,347	38,100
DAM WHEELS	3,191	3,291	1,539	6,500	5,757	2,961	3,242
DAM VIRTUAL	31,334	29,842	29,153	28,049	28,503	31,491	23,389
BALANCING NYCA	(91,029)	(98,023)	(107,085)	(94,910)	(112,737)	(100,369)	(105,346)
BALANCING NON-NYCA	8,161	10,418	12,626	6,920	10,190	17,042	15,396
BALANCING WHEELS	(1,991)	(1,341)	(175)	(4,100)	(4,157)	(1,761)	(2,092)
BALANCING VIRTUAL	(31,334)	(29,842)	(29,153)	(28,049)	(28,503)	(31,491)	(23,389)
UFE/LOSSES	108,537	109,279	108,501	98,894	104,650	105,127	108,042
	27	28	29	30	31		
DAM NYCA	476,335	484,975	490,992	495,517	484,012		
DAM NON-NYCA	40,048	38,325	26,769	22,505	31,722		
DAM WHEELS	6,132	8,830	7,706	7,067	6,816		
DAM VIRTUAL	28,740	35,462	38,725	40,381	39,611		
BALANCING NYCA	(104,136)	(99,395)	(92,936)	(81,387)	(81,309)		
BALANCING NON-NYCA	14,748	2,839	3,418	4,199	3,724		
BALANCING WHEELS	(4,227)	(6,852)	(6,506)	(5,867)	(4,566)		
BALANCING VIRTUAL	(28,740)	(35,462)	(38,725)	(40,381)	(39,611)		
UFE/LOSSES	104,864	95,187	87,434	82,644	84,552		



SETTLEMENTS REPORT
January 2020 Settlement Adjustment
June 5, 2020

4-Month Settlement Adjustment – Market Withdrawals Analysis

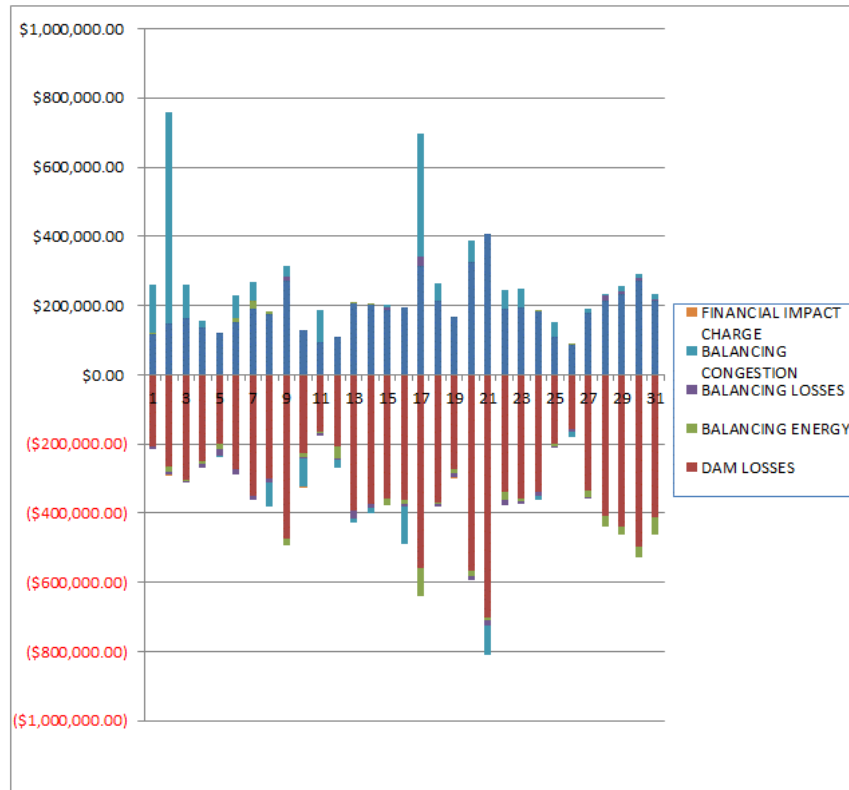
	MONDAY	TUESDAY	WEDNESDAY	THURSDAY	FRIDAY	SATURDAY	SUNDAY
			1	2	3	4	5
DAM NYCA			455,682	478,062	470,186	441,077	444,292
DAM NON-NYCA			41,815	41,371	47,250	42,793	44,439
DAM WHEELS			2,007	2,002	4,296	2,447	2,654
DAM VIRTUAL			19,376	23,955	21,557	23,873	28,349
BALANCING NYCA			(119,152)	(116,685)	(111,229)	(96,573)	(99,173)
BALANCING NON-NYCA			17,415	14,062	10,441	5,558	8,048
BALANCING WHEELS			(1,407)	(1,402)	(3,696)	(1,847)	(2,054)
BALANCING VIRTUAL			(19,376)	(23,955)	(21,557)	(23,873)	(28,349)
UFE/LOSSES			113,930	109,971	106,012	98,436	104,794
	6	7	8	9	10	11	12
DAM NYCA	478,590	484,018	489,995	498,630	478,721	432,696	425,659
DAM NON-NYCA	45,437	48,889	44,584	41,028	41,263	44,966	41,146
DAM WHEELS	2,280	2,890	1,426	4,519	2,902	3,253	5,934
DAM VIRTUAL	30,532	29,153	38,479	29,970	27,434	21,836	21,140
BALANCING NYCA	(107,683)	(108,394)	(110,417)	(96,339)	(112,241)	(113,342)	(105,081)
BALANCING NON-NYCA	13,819	7,987	16,975	10,477	22,418	18,179	12,324
BALANCING WHEELS	(1,680)	(2,340)	(829)	(3,859)	(2,302)	(2,653)	(5,334)
BALANCING VIRTUAL	(30,532)	(29,153)	(38,479)	(29,970)	(27,434)	(21,836)	(21,140)
UFE/LOSSES	115,332	110,118	116,032	107,147	116,982	109,100	99,195
	13	14	15	16	17	18	19
DAM NYCA	469,552	475,704	469,326	480,229	501,331	476,524	457,724
DAM NON-NYCA	41,319	45,306	44,293	44,871	51,849	48,653	49,555
DAM WHEELS	9,108	5,330	5,135	2,711	2,981	2,293	2,462
DAM VIRTUAL	28,092	24,552	27,142	33,602	40,553	30,483	25,448
BALANCING NYCA	(99,140)	(110,607)	(113,805)	(115,078)	(100,338)	(87,715)	(103,844)
BALANCING NON-NYCA	7,848	8,728	8,974	14,812	8,671	12,492	16,681
BALANCING WHEELS	(8,508)	(4,730)	(4,535)	(1,911)	(2,581)	(1,093)	(1,262)
BALANCING VIRTUAL	(28,092)	(24,552)	(27,142)	(33,602)	(40,553)	(30,483)	(25,448)
UFE/LOSSES	102,665	106,962	105,624	112,336	109,389	112,411	112,742
	20	21	22	23	24	25	26
DAM NYCA	492,464	509,278	503,473	489,394	481,961	452,540	440,707
DAM NON-NYCA	46,766	45,023	42,979	38,678	39,126	36,347	38,100
DAM WHEELS	3,191	3,291	1,539	6,500	5,757	2,961	3,242
DAM VIRTUAL	31,334	29,842	29,153	28,049	28,503	31,491	23,389
BALANCING NYCA	(91,421)	(99,351)	(107,478)	(95,226)	(113,048)	(100,730)	(105,713)
BALANCING NON-NYCA	8,161	10,418	12,626	6,920	10,190	17,042	15,396
BALANCING WHEELS	(1,991)	(1,341)	(175)	(4,100)	(4,157)	(1,761)	(2,092)
BALANCING VIRTUAL	(31,334)	(29,842)	(29,153)	(28,049)	(28,503)	(31,491)	(23,389)
UFE/LOSSES	108,564	109,283	108,557	98,833	104,659	105,165	108,068
	27	28	29	30	31		
DAM NYCA	476,335	484,975	490,992	495,517	484,012		
DAM NON-NYCA	40,048	38,325	26,769	22,505	31,722		
DAM WHEELS	6,132	8,830	7,706	7,067	6,816		
DAM VIRTUAL	28,740	35,462	38,725	40,381	39,611		
BALANCING NYCA	(104,583)	(99,782)	(93,382)	(81,791)	(81,690)		
BALANCING NON-NYCA	14,748	2,839	3,418	4,199	3,724		
BALANCING WHEELS	(4,227)	(6,852)	(6,506)	(5,867)	(4,566)		
BALANCING VIRTUAL	(28,740)	(35,462)	(38,725)	(40,381)	(39,611)		
UFE/LOSSES	104,988	95,190	87,515	82,647	84,573		



SETTLEMENTS REPORT
January 2020 Settlement Adjustment
June 5, 2020

Initial Settlement – Market Residuals Analysis

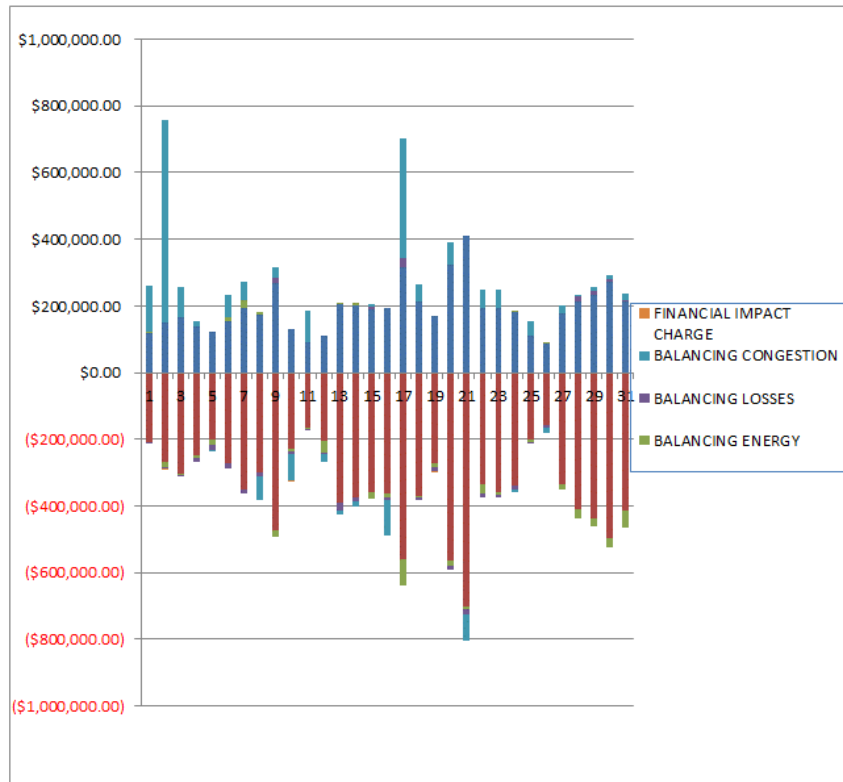
	MONDAY	TUESDAY	WEDNESDAY	THURSDAY	FRIDAY	SATURDAY	SUNDAY
			1	2	3	4	5
DAM ENERGY			\$118,314.19	\$149,375.62	\$164,109.89	\$137,808.02	\$122,892.27
DAM LOSSES			(\$207,588.42)	(\$266,021.09)	(\$301,817.75)	(\$248,871.94)	(\$199,004.48)
BALANCING ENERGY			\$4,592.51	(\$16,053.61)	(\$6,510.49)	(\$8,509.55)	(\$16,661.24)
BALANCING LOSSES			(\$6,005.15)	(\$6,623.47)	(\$2,037.96)	(\$9,705.75)	(\$16,633.05)
BALANCING CONGESTION			\$137,751.08	\$608,088.41	\$94,466.30	\$17,208.71	(\$4,828.06)
FINANCIAL IMPACT CHARGE			\$0.00	(\$1.44)	\$0.00	\$0.00	\$0.00
	6	7	8	9	10	11	12
DAM ENERGY	\$152,608.56	\$192,665.22	\$174,730.89	\$270,262.06	\$129,260.53	\$92,522.12	\$110,455.31
DAM LOSSES	(\$272,998.26)	(\$351,286.09)	(\$298,407.26)	(\$471,816.41)	(\$227,024.48)	(\$163,669.39)	(\$205,910.75)
BALANCING ENERGY	\$11,999.58	\$23,015.35	\$7,326.58	(\$20,408.33)	(\$10,539.14)	(\$6,655.34)	(\$36,181.15)
BALANCING LOSSES	(\$16,730.99)	(\$10,682.83)	(\$13,901.11)	\$12,865.22	(\$5,572.95)	(\$4,776.62)	(\$3,107.16)
BALANCING CONGESTION	\$64,806.01	\$54,266.09	(\$70,005.66)	\$31,900.16	(\$78,772.39)	\$93,067.50	(\$22,010.94)
FINANCIAL IMPACT CHARGE	\$0.00	\$0.00	\$0.00	\$0.00	(\$43.48)	\$0.00	\$0.00
	13	14	15	16	17	18	19
DAM ENERGY	\$207,259.70	\$201,711.22	\$187,895.41	\$195,233.67	\$315,928.21	\$212,483.17	\$168,299.20
DAM LOSSES	(\$390,631.56)	(\$372,685.91)	(\$358,351.15)	(\$361,428.04)	(\$560,289.19)	(\$370,834.13)	(\$272,629.37)
BALANCING ENERGY	\$2,850.71	\$5,169.74	(\$18,964.64)	(\$12,691.24)	(\$78,246.64)	(\$4,079.86)	(\$10,652.53)
BALANCING LOSSES	(\$24,924.12)	(\$12,584.20)	\$8,171.83	(\$7,850.13)	\$27,275.84	(\$7,673.17)	(\$10,767.91)
BALANCING CONGESTION	(\$11,387.76)	(\$16,181.36)	\$7,064.74	(\$105,617.27)	\$353,595.76	\$50,341.53	(\$1,071.40)
FINANCIAL IMPACT CHARGE	\$0.00	\$0.00	\$0.00	\$0.00	\$0.00	\$0.00	(\$658.67)
	20	21	22	23	24	25	26
DAM ENERGY	\$325,077.40	\$408,739.72	\$192,712.09	\$194,063.65	\$181,514.08	\$111,286.97	\$87,073.53
DAM LOSSES	(\$565,213.43)	(\$701,702.49)	(\$336,680.04)	(\$359,280.02)	(\$336,993.99)	(\$199,009.48)	(\$155,912.20)
BALANCING ENERGY	(\$16,490.66)	(\$6,160.95)	(\$26,656.74)	(\$4,294.66)	\$3,084.84	(\$8,923.29)	\$3,449.13
BALANCING LOSSES	(\$10,940.52)	(\$17,492.83)	(\$13,034.78)	(\$9,564.87)	(\$13,149.37)	(\$4,376.54)	(\$7,776.59)
BALANCING CONGESTION	\$61,536.46	(\$83,149.75)	\$53,056.62	\$53,767.73	(\$10,207.97)	\$42,629.04	(\$17,528.30)
FINANCIAL IMPACT CHARGE	\$0.00	\$0.00	\$0.00	\$0.00	(\$0.11)	\$0.00	\$0.00
	27	28	29	30	31		
DAM ENERGY	\$178,553.34	\$214,063.62	\$231,418.64	\$271,641.92	\$212,097.33		
DAM LOSSES	(\$334,196.30)	(\$408,421.93)	(\$439,379.96)	(\$498,358.43)	(\$413,217.18)		
BALANCING ENERGY	(\$19,008.76)	(\$30,309.04)	(\$24,102.44)	(\$27,581.14)	(\$50,658.44)		
BALANCING LOSSES	(\$185.30)	\$14,971.97	\$11,157.06	\$7,119.86	\$5,649.14		
BALANCING CONGESTION	\$14,044.83	\$3,200.81	\$13,367.87	\$11,376.54	\$15,765.24		
FINANCIAL IMPACT CHARGE	\$0.00	\$0.00	\$0.00	\$0.00	\$0.00		



SETTLEMENTS REPORT
January 2020 Settlement Adjustment
June 5, 2020

4-Month Settlement Adjustment – Market Residuals Analysis

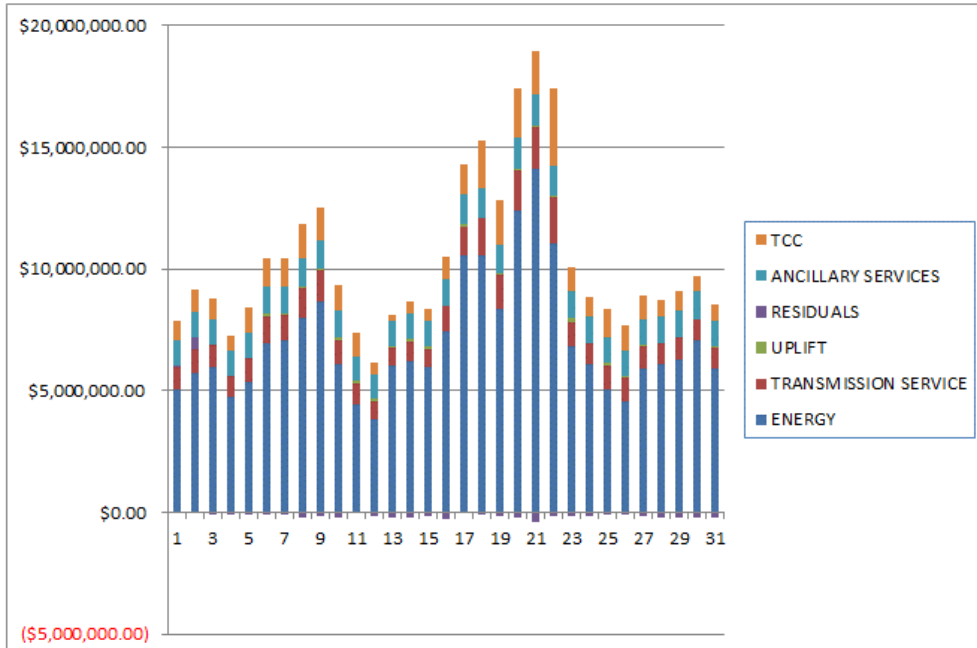
	MONDAY	TUESDAY	WEDNESDAY	THURSDAY	FRIDAY	SATURDAY	SUNDAY
			1	2	3	4	5
DAM ENERGY			\$118,314.19	\$149,375.62	\$164,109.89	\$137,808.02	\$122,892.27
DAM LOSSES			(\$207,588.42)	(\$266,021.09)	(\$301,817.75)	(\$248,871.94)	(\$199,004.48)
BALANCING ENERGY			\$4,684.43	(\$15,832.55)	(\$6,362.38)	(\$8,219.09)	(\$16,678.26)
BALANCING LOSSES			(\$5,950.80)	(\$6,452.00)	(\$1,712.86)	(\$5,406.59)	(\$16,399.81)
BALANCING CONGESTION			\$137,129.31	\$607,767.76	\$94,429.69	\$17,216.21	(\$1,275.16)
FINANCIAL IMPACT CHARGE			\$0.00	(\$1.45)	\$0.00	\$0.00	\$0.00
	6	7	8	9	10	11	12
DAM ENERGY	\$152,608.55	\$192,665.22	\$174,730.89	\$270,262.06	\$129,260.53	\$92,522.12	\$110,455.31
DAM LOSSES	(\$272,998.26)	(\$351,286.09)	(\$298,407.27)	(\$471,816.42)	(\$227,024.47)	(\$163,869.39)	(\$205,910.74)
BALANCING ENERGY	\$12,274.22	\$23,367.11	\$7,445.00	(\$20,085.53)	(\$10,521.74)	(\$6,601.02)	(\$36,271.20)
BALANCING LOSSES	(\$16,502.16)	(\$10,110.76)	(\$13,663.36)	\$13,315.11	(\$5,386.09)	(\$4,700.52)	(\$2,903.34)
BALANCING CONGESTION	\$67,994.12	\$56,900.24	(\$70,105.03)	\$31,292.60	(\$79,242.09)	\$93,847.01	(\$22,169.55)
FINANCIAL IMPACT CHARGE	\$0.00	\$0.00	\$0.00	\$0.00	(\$43.48)	\$0.00	\$0.00
	13	14	15	16	17	18	19
DAM ENERGY	\$207,259.71	\$201,711.22	\$187,895.41	\$195,233.67	\$315,928.21	\$212,483.16	\$168,299.20
DAM LOSSES	(\$390,631.57)	(\$372,685.92)	(\$358,351.16)	(\$361,428.05)	(\$560,289.19)	(\$370,834.13)	(\$272,629.38)
BALANCING ENERGY	\$2,812.24	\$6,023.31	(\$18,560.76)	(\$12,633.65)	(\$77,930.50)	(\$3,831.75)	(\$10,434.50)
BALANCING LOSSES	(\$24,658.75)	(\$12,129.65)	\$8,509.90	(\$7,564.31)	\$27,920.21	(\$7,279.28)	(\$10,550.99)
BALANCING CONGESTION	(\$11,407.18)	(\$16,240.99)	\$7,062.76	(\$105,701.55)	\$358,337.01	\$52,942.67	(\$1,330.54)
FINANCIAL IMPACT CHARGE	\$0.00	\$0.00	\$0.00	\$0.00	\$0.00	\$0.00	(\$858.73)
	20	21	22	23	24	25	26
DAM ENERGY	\$325,077.40	\$408,739.73	\$192,712.09	\$194,063.65	\$181,514.08	\$111,286.97	\$87,073.53
DAM LOSSES	(\$565,213.43)	(\$701,702.49)	(\$336,680.05)	(\$359,280.02)	(\$336,993.99)	(\$199,009.47)	(\$155,912.20)
BALANCING ENERGY	(\$15,825.53)	(\$6,054.51)	(\$26,039.89)	(\$5,414.51)	\$3,214.75	(\$8,338.91)	\$3,564.03
BALANCING LOSSES	(\$10,468.77)	(\$17,032.04)	(\$12,656.77)	(\$9,208.12)	(\$12,865.06)	(\$4,149.62)	(\$7,710.39)
BALANCING CONGESTION	\$65,502.50	(\$80,041.31)	\$55,998.14	\$54,379.64	(\$9,714.29)	\$42,927.32	(\$17,309.00)
FINANCIAL IMPACT CHARGE	\$0.00	\$0.00	\$0.00	\$0.00	(\$0.12)	\$0.00	\$0.00
	27	28	29	30	31		
DAM ENERGY	\$178,553.33	\$214,063.62	\$231,418.64	\$271,641.92	\$212,097.33		
DAM LOSSES	(\$334,196.30)	(\$408,421.93)	(\$439,379.97)	(\$498,358.44)	(\$413,217.18)		
BALANCING ENERGY	(\$16,570.59)	(\$30,202.71)	(\$22,804.74)	(\$27,486.78)	(\$50,162.89)		
BALANCING LOSSES	\$585.16	\$15,516.55	\$11,844.62	\$7,739.70	\$6,243.61		
BALANCING CONGESTION	\$20,683.84	\$3,283.97	\$13,655.06	\$11,892.83	\$17,367.74		
FINANCIAL IMPACT CHARGE	\$0.00	\$0.00	\$0.00	\$0.00	\$0.00		



SETTLEMENTS REPORT
January 2020 Settlement Adjustment
June 5, 2020

Initial Settlement – Market Costs Analysis

	MONDAY	TUESDAY	WEDNESDAY	THURSDAY	FRIDAY	SATURDAY	SUNDAY
ENERGY			1	2	3	4	5
TRANSMISSION SERVICE			\$5,081,920.38	\$5,712,751.56	\$5,956,390.24	\$4,758,357.57	\$5,346,345.91
UPLIFT			\$903,426.07	\$983,893.04	\$929,450.61	\$823,613.46	\$1,007,885.85
RESIDUALS			\$13,287.58	\$19,278.25	\$6,055.29	\$14,690.97	\$3,728.89
ANCILLARY SERVICES			\$47,064.21	\$468,764.42	(\$51,790.01)	(\$112,070.51)	(\$114,234.55)
TCC			\$1,031,472.64	\$1,051,811.94	\$1,049,531.94	\$1,016,207.55	\$1,048,943.77
			\$794,775.79	\$899,749.69	\$840,752.45	\$668,559.69	\$1,035,927.05
	6	7	8	9	10	11	12
ENERGY	\$6,968,712.06	\$7,059,085.30	\$8,006,116.03	\$8,689,663.43	\$6,076,986.60	\$4,436,624.53	\$3,819,617.56
TRANSMISSION SERVICE	\$1,090,834.28	\$1,081,059.18	\$1,211,157.18	\$1,237,706.47	\$1,023,275.98	\$888,950.25	\$734,517.16
UPLIFT	\$99,615.21	\$36,658.55	\$87,721.86	\$71,890.29	\$116,164.95	\$65,925.27	\$109,536.07
RESIDUALS	(\$60,315.10)	(\$92,022.26)	(\$200,256.56)	(\$177,197.30)	(\$192,691.91)	\$10,488.27	(\$156,754.69)
ANCILLARY SERVICES	\$1,098,328.56	\$1,088,080.02	\$1,125,507.85	\$1,148,725.60	\$1,070,225.78	\$989,540.69	\$977,788.92
TCC	\$1,170,624.20	\$1,191,101.16	\$1,413,160.27	\$1,399,758.07	\$1,056,570.30	\$960,832.18	\$537,438.27
	13	14	15	16	17	18	19
ENERGY	\$6,047,576.36	\$6,229,541.40	\$5,945,041.74	\$7,456,606.49	\$10,571,291.91	\$10,586,293.85	\$8,344,972.53
TRANSMISSION SERVICE	\$694,464.20	\$787,670.49	\$772,102.29	\$996,011.09	\$1,165,252.74	\$1,495,142.76	\$1,447,731.11
UPLIFT	\$97,933.41	\$90,969.30	\$128,020.27	\$43,890.80	\$81,305.34	\$10,302.51	\$20,686.58
RESIDUALS	(\$216,833.03)	(\$194,570.51)	(\$174,183.81)	(\$292,353.01)	\$58,263.98	(\$119,762.46)	(\$127,680.68)
ANCILLARY SERVICES	\$1,044,236.76	\$1,050,612.27	\$1,036,040.41	\$1,090,397.10	\$1,168,665.00	\$1,217,693.87	\$1,147,535.41
TCC	\$208,080.45	\$523,899.04	\$484,037.87	\$912,109.65	\$1,245,824.50	\$1,955,661.67	\$1,887,901.76
	20	21	22	23	24	25	26
ENERGY	\$12,427,544.98	\$14,085,097.97	\$11,076,534.09	\$6,817,868.88	\$6,066,771.15	\$5,046,547.48	\$4,566,244.35
TRANSMISSION SERVICE	\$1,645,602.91	\$1,723,160.58	\$1,848,171.75	\$1,015,481.49	\$900,490.87	\$1,006,622.26	\$975,081.06
UPLIFT	\$66,932.41	\$93,201.82	\$62,468.55	\$145,324.82	\$2,627.28	\$102,472.78	\$60,514.07
RESIDUALS	(\$206,030.75)	(\$399,766.30)	(\$130,602.85)	(\$125,308.17)	(\$175,752.52)	(\$58,393.30)	(\$90,694.43)
ANCILLARY SERVICES	\$1,258,585.55	\$1,296,930.17	\$1,256,097.93	\$1,119,182.41	\$1,071,682.46	\$1,048,279.09	\$1,019,080.91
TCC	\$2,010,261.94	\$1,744,444.74	\$3,181,493.29	\$986,530.10	\$798,850.24	\$1,181,124.72	\$1,044,900.68
	27	28	29	30	31		
ENERGY	\$5,892,133.35	\$6,061,976.34	\$6,253,340.77	\$7,049,376.20	\$5,922,758.90		
TRANSMISSION SERVICE	\$955,506.96	\$861,355.20	\$930,706.92	\$877,752.46	\$831,270.61		
UPLIFT	\$29,920.86	\$22,503.37	\$22,838.56	\$31,647.31	\$60,371.84		
RESIDUALS	(\$160,792.19)	(\$206,494.57)	(\$207,538.83)	(\$235,801.25)	(\$230,363.91)		
ANCILLARY SERVICES	\$1,076,303.27	\$1,075,775.40	\$1,083,938.04	\$1,103,976.71	\$1,073,007.64		
TCC	\$930,916.22	\$673,552.35	\$824,863.67	\$638,704.10	\$658,970.11		



SETTLEMENTS REPORT
January 2020 Settlement Adjustment
June 5, 2020

4-Month Settlement Adjustment – Market Costs Analysis

	MONDAY	TUESDAY	WEDNESDAY	THURSDAY	FRIDAY	SATURDAY	SUNDAY
			1	2	3	4	5
ENERGY			\$5,080,823.44	\$5,709,804.19	\$5,952,658.10	\$4,751,411.15	\$5,337,344.89
TRANSMISSION SERVICE			\$902,183.76	\$982,883.51	\$928,415.04	\$822,209.50	\$1,006,670.40
UPLIFT			\$13,287.69	\$19,278.13	\$5,951.28	\$14,692.62	\$3,737.69
RESIDUALS			\$46,588.71	\$468,836.29	(\$51,353.41)	(\$111,473.39)	(\$110,465.44)
ANCILLARY SERVICES			\$1,029,538.84	\$1,050,207.34	\$1,047,905.17	\$1,014,106.12	\$1,048,109.37
TCC			\$795,069.52	\$900,056.62	\$841,028.90	\$668,809.80	\$1,035,077.42
	6	7	8	9	10	11	12
ENERGY	\$6,960,152.94	\$7,046,620.70	\$8,002,901.30	\$8,682,990.93	\$6,072,736.25	\$4,433,846.79	\$3,815,025.50
TRANSMISSION SERVICE	\$1,089,683.96	\$1,079,643.36	\$1,210,106.50	\$1,236,421.65	\$1,022,054.25	\$887,543.62	\$732,939.07
UPLIFT	\$99,615.35	\$36,658.59	\$87,719.25	\$71,901.68	\$116,165.01	\$65,925.20	\$109,536.64
RESIDUALS	(\$56,623.53)	(\$88,464.28)	(\$199,999.77)	(\$177,032.18)	(\$192,957.34)	\$11,398.20	(\$156,799.52)
ANCILLARY SERVICES	\$1,097,660.66	\$1,086,484.02	\$1,124,593.01	\$1,147,171.84	\$1,068,765.37	\$987,971.65	\$975,866.59
TCC	\$1,169,773.31	\$1,190,781.15	\$1,412,665.99	\$1,399,609.57	\$1,056,364.26	\$960,538.84	\$537,271.80
	13	14	15	16	17	18	19
ENERGY	\$6,040,681.71	\$6,222,129.42	\$5,940,038.16	\$7,452,038.68	\$10,555,837.19	\$10,577,391.67	\$8,342,099.81
TRANSMISSION SERVICE	\$693,168.33	\$786,225.38	\$770,898.05	\$994,606.72	\$1,163,648.68	\$1,494,063.81	\$1,446,650.11
UPLIFT	\$97,934.05	\$90,969.30	\$128,022.20	\$43,890.81	\$94,809.62	\$10,302.56	\$20,685.87
RESIDUALS	(\$216,625.55)	(\$193,322.03)	(\$173,443.85)	(\$292,093.89)	\$63,965.74	(\$116,519.33)	(\$127,504.94)
ANCILLARY SERVICES	\$1,042,652.51	\$1,048,568.78	\$1,034,449.52	\$1,088,154.59	\$1,166,337.79	\$1,215,317.57	\$1,145,267.78
TCC	\$208,065.36	\$524,009.77	\$484,193.48	\$912,484.17	\$1,246,065.10	\$1,956,556.48	\$1,888,731.62
	20	21	22	23	24	25	26
ENERGY	\$12,414,684.96	\$14,074,940.81	\$11,068,256.84	\$6,812,049.60	\$6,062,638.14	\$5,042,566.65	\$4,564,723.00
TRANSMISSION SERVICE	\$1,644,304.90	\$1,721,738.66	\$1,846,860.22	\$1,014,118.97	\$899,355.61	\$1,005,068.07	\$973,532.95
UPLIFT	\$69,749.87	\$93,366.81	\$62,486.85	\$145,333.57	\$2,630.10	\$102,475.28	\$60,515.11
RESIDUALS	(\$200,927.83)	(\$396,090.62)	(\$126,666.48)	(\$125,459.36)	(\$174,844.63)	(\$57,283.71)	(\$90,294.03)
ANCILLARY SERVICES	\$1,255,959.72	\$1,293,464.42	\$1,252,126.24	\$1,116,550.23	\$1,069,672.60	\$1,045,465.14	\$1,015,912.16
TCC	\$2,011,336.66	\$1,746,054.03	\$3,183,792.79	\$987,318.50	\$799,358.74	\$1,182,076.14	\$1,045,955.51
	27	28	29	30	31		
ENERGY	\$5,882,459.70	\$6,054,583.61	\$6,245,186.57	\$7,041,109.02	\$5,912,280.36		
TRANSMISSION SERVICE	\$954,260.90	\$859,763.72	\$929,141.28	\$876,169.03	\$829,749.67		
UPLIFT	\$29,859.52	\$22,503.43	\$22,838.30	\$31,647.30	\$60,371.42		
RESIDUALS	(\$150,944.56)	(\$205,760.50)	(\$205,266.39)	(\$234,570.77)	(\$227,671.39)		
ANCILLARY SERVICES	\$1,074,200.83	\$1,073,427.17	\$1,081,633.74	\$1,101,869.24	\$1,070,978.52		
TCC	\$931,409.06	\$673,820.28	\$825,061.43	\$638,709.59	\$658,971.61		

