

Congestion Impact Update

NYISO ESPWG
June 8, 2005

Manos Obessis
Jim Mitsche

Draft – for discussion purposes only



Since the Last Report

- Calculated 2005 Q1 Impact Metrics
 - Transitioned to SMD data formats
 - Further refined PROBE functionality
- Previous results posted on NYISO website
- All metric quantities based solely on mitigated bids
- Established process for monthly data acquisition



Congestion Reporting Posting (just for reference)

Total and Zonal Congestion Metrics

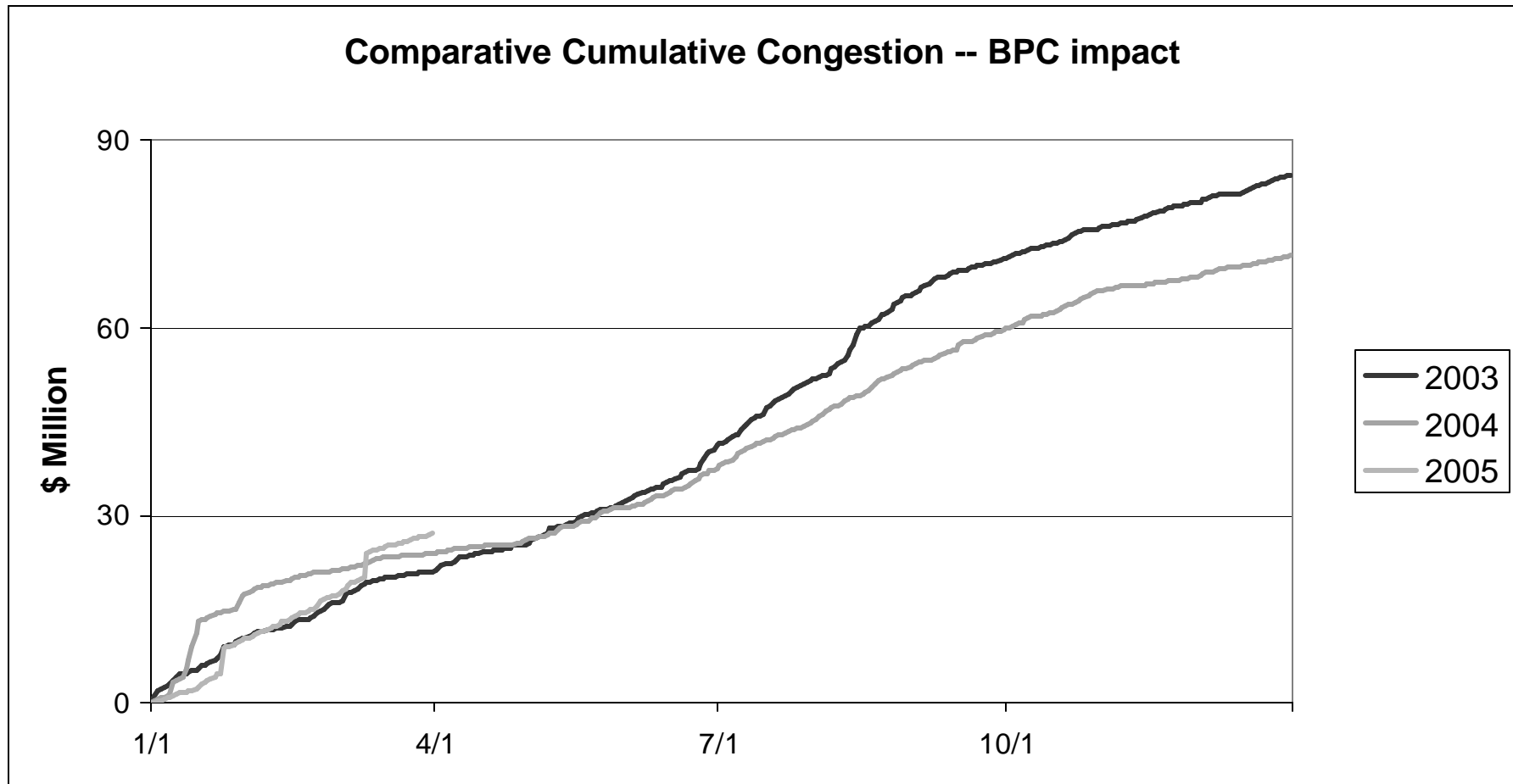
		Annual Total	Monthly Total	Daily Totals
1	4 metrics for NYCA	X	X	X
2	4 metrics Zonal	X	X	X
3	Constrained component quantities	X		
4	Unconstrained component quantities	X		

Congestion Payments By Constraint

		Annual Total	Monthly Total	Daily Totals
A	Monitored element totals	X	X	
B	Monitored element / Contingency pair			X



Multi-year comparison



Multi-year comparison by numbers (BPC impact – in \$ Million)

	2003	2004	2005
January	10.5	17.4	10.3
February	5.4	3.9	7.0
March	5.2	2.8	9.9
Q1 Total	21.1	24.1	27.2



2005 Q1 Metric summary

Q1 2005 Total Congestion Impact - Mitigated Bids (\$ Millions)

Zone	BPC mitig	Unhedged Cong	Gener pay	Unhedged load pay
CAPITL	2.42	1.53	-1.41	-11.32
CENTRL	-19.85	-2.27	-56.43	-15.81
DUNWOD	0.00	3.02	-1.50	-2.38
GENESE	-0.55	-0.64	-5.70	-12.61
HQ	-7.21	-0.12	-10.46	0.08
HUDVL	-0.32	-2.91	-10.62	-13.89
LONGIL	43.81	54.42	79.44	31.50
MHKVL	-3.28	-0.39	-7.27	-6.92
MILLWD	0.00	-9.02	-17.80	-13.76
NORTH	-0.04	0.07	-8.21	-5.94
NPX	-2.42	0.49	-1.03	0.50
NYC	41.28	69.52	61.02	18.26
OH	-6.03	0.00	-13.35	0.55
PJM	-14.98	-0.20	-20.88	0.10
WEST	-5.60	-4.05	-36.20	-19.32
Totals	27.21	109.46	-50.40	-50.93
Sched1 & Shortfall Adj				-0.53
NYCA Total	27.21	109.46	-50.40	-50.40



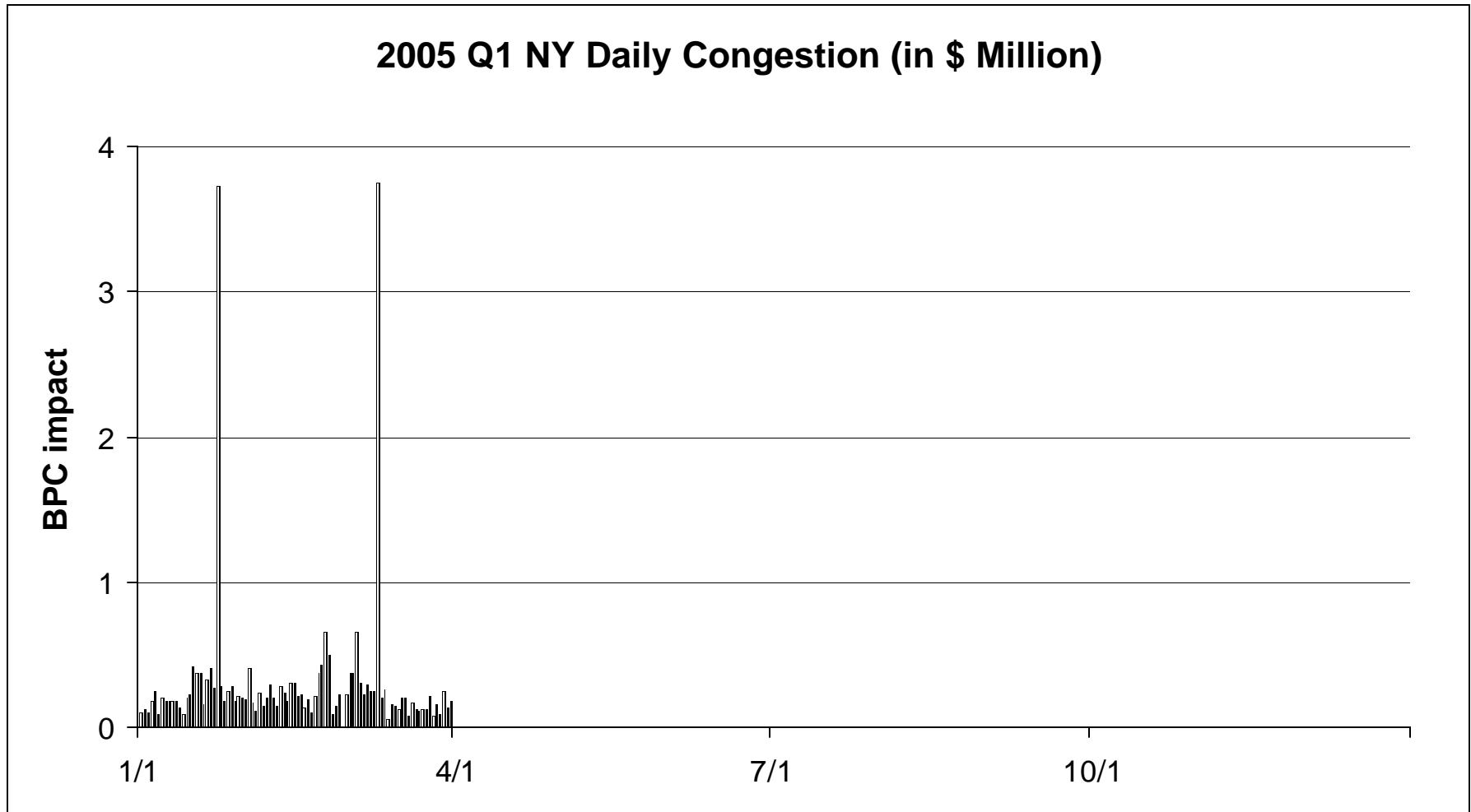
2005 Q1 Constraint summary

Unhedged Congestion Impact by Constraint (Price Increasing Impact only)

Monitored Facility	% of Q1 total	cumulative % of Q1 total
W49TH_ST 345 SPRNBRK 345 1	30.9	30.9
CENTRAL EAST - VC	25.0	55.9
DUNWODIE 345 SHORE_RD 345 1	23.3	79.2
E13THSTA 345 W49TH_ST 345 1	6.8	85.9
RAINEY__ 345 DUNWOD71 345 1	4.4	90.4
VALLYSTR 138 EGRDNCTY 138 1	2.2	92.5
RAINEY 345 DUNWODIE 345 2	2.0	94.5
UPNY CONED	1.5	96.1
RAINEY__ 138 VERNON__ 138 1	1.0	97.0
E179THST 138 HELLGT_E 138 1	0.7	97.7
QUENBRDG 138 VERNON__ 138 1	0.6	98.3
ASTORIAE 138 HELLGT_E 138 1	0.4	98.7
RAINEY 138 VERNON 138 1	0.2	98.9
EGRDNCTY 138 VALLYSTR 138 1	0.2	99.1



Congestion Impact By Day



2005 Q1 Congestion Impact Observations

- 2005 Q1 results comparable to previous years
 - Total Q1 congestion increased from previous years
 - Excluding unusual days, congestion actually decreased
- Two (obviously) unusual days
 - No obviously critical transmission outage or major unit outages
 - Process and data double checked for errors
 - Congestion traced to unusual market conditions
- Constraints similar as previous years



Posting of Congestion Impact Reports

- 2003 and 2004 currently posted
- Posting Location: in planning section of NYISO website
- Posting Style: Excel spreadsheets, separate per report type
- Posting Frequency: Quarterly
- Explanatory documents also posted



Next Steps

- Continue producing numbers monthly
- Continue posting numbers quarterly
- Incorporate comments / expand explanatory Info
- Ensure integrity of SMD-style data format
- Other sensitivity or unusual day analysis as directed

