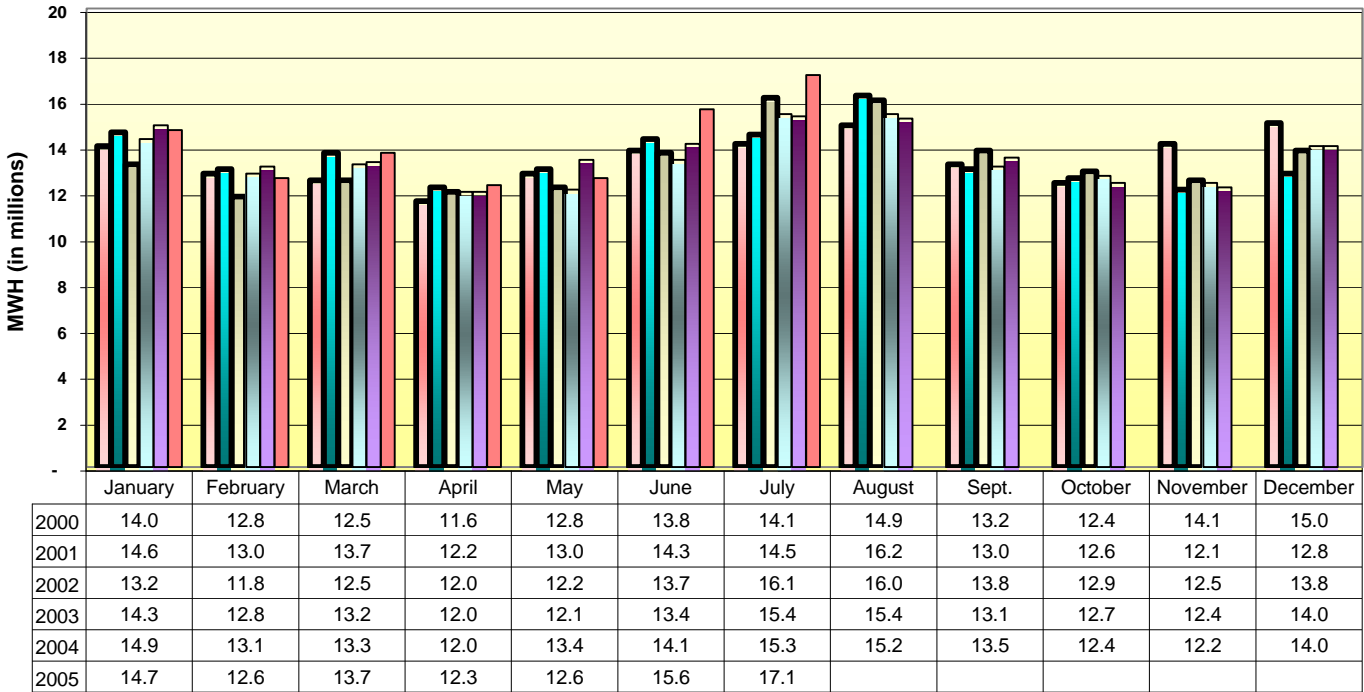


**NYISO
LOAD TRENDS
FOR AUGUST 31, 2005 BSP TELECONFERENCE**

**Load Comparison - By Month
2000 - 2005**



■ 2000
 ■ 2001
 ■ 2002
 ■ 2003
 ■ 2004
 ■ 2005

2005 Load Comparison: Forecast vs. Actual					
Invoice Month	Forecast Load	Actual Load	Monthly Differential	Cumulative Differential	Cumulative \$ Impact (in millions)
	<i>(millions of MWH)</i>				<i>Over/(Under)</i>
Jan	15.0	14.7	(0.3)	(0.3)	\$ (0.3)
Feb	13.1	12.6	(0.5)	(0.8)	\$ (0.6)
Mar	13.3	13.7	0.4	(0.4)	\$ (0.3)
Apr	12.0	12.3	0.3	(0.1)	\$ (0.1)
May	13.4	12.6	(0.8)	(0.9)	\$ (0.7)
Jun	14.1	15.6	1.5	0.6	\$ 0.5
Jul	15.2	17.1	1.9	2.5	\$ 2.0
Aug	15.2	TBD	TBD	TBD	TBD
Sep	13.5	TBD	TBD	TBD	TBD
Oct	12.4	TBD	TBD	TBD	TBD
Nov	12.4	TBD	TBD	TBD	TBD
Dec	14.1	TBD	TBD	TBD	TBD
Total	163.7	98.6	2.5		\$ 2.0