

Operations Performance Metrics Monthly Report



June 2011 Report

Operations & Reliability Department New York Independent System Operator

Prepared by NYISO Operations Analysis and Services, based on settlements initial invoice data obtained on or before July 11, 2011.

Table of Contents

- ◆ **Highlights**
 - *Operations Performance*

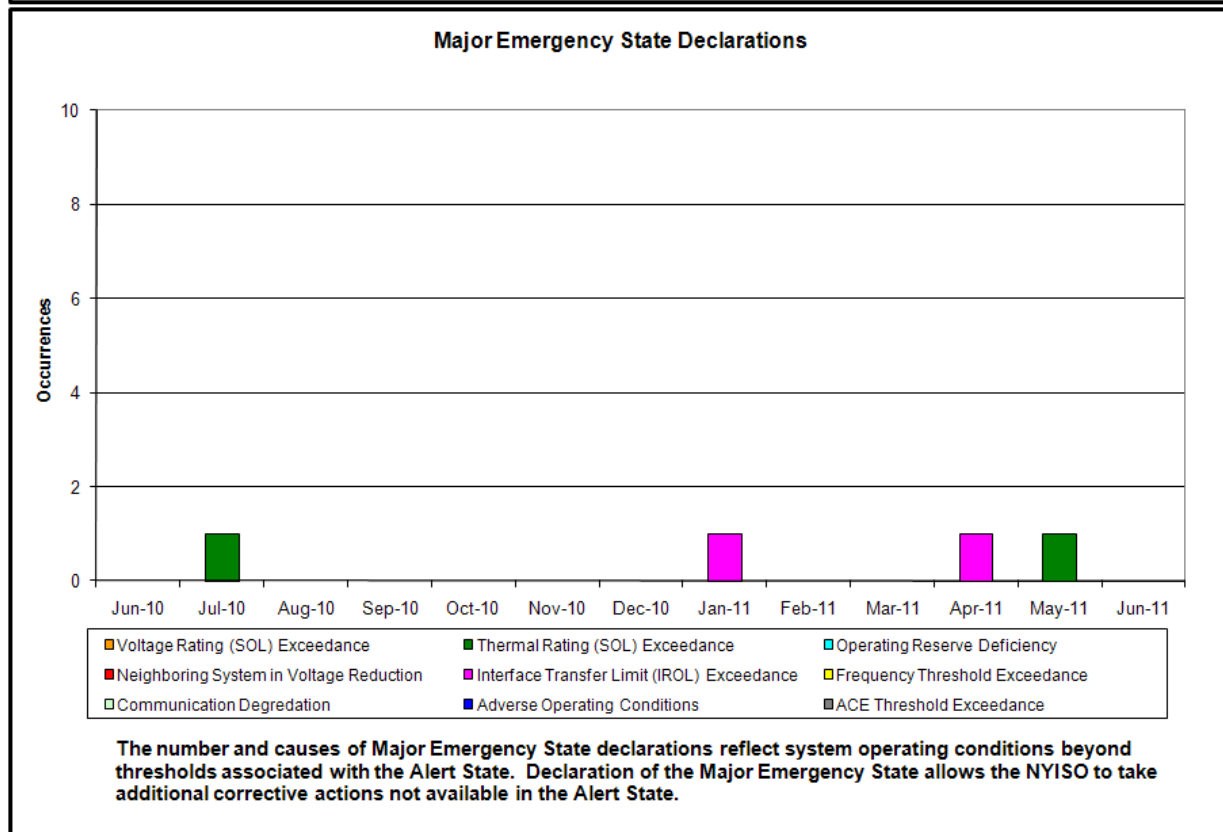
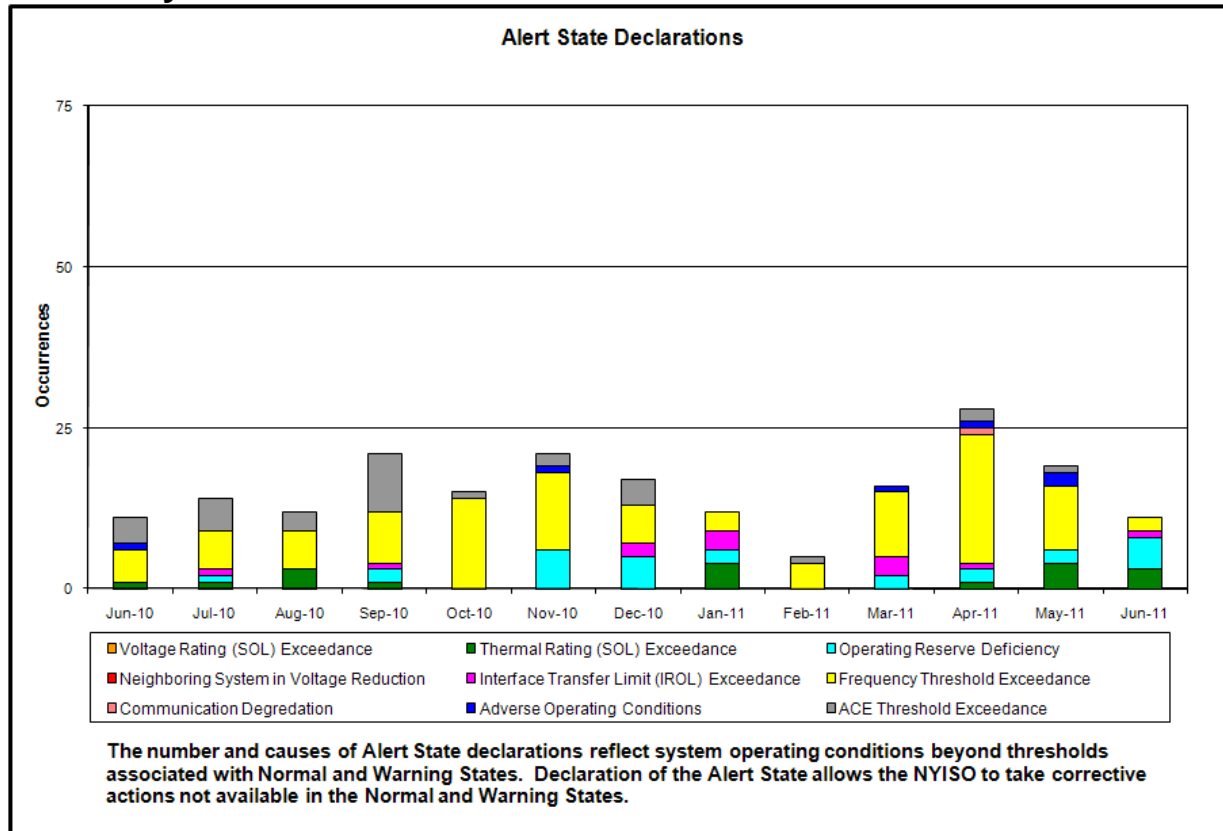
- ◆ **Reliability Performance Metrics**
 - *Alert State Declarations*
 - *Major Emergency State Declarations*
 - *IROL Exceedance Times*
 - *Balancing Area Control Performance*
 - *Reserve Activations*
 - *Disturbance Recovery Times*
 - *Load Forecasting Performance*
 - *Wind Forecasting Performance*
 - *Lake Erie Circulation and ISO Schedules*

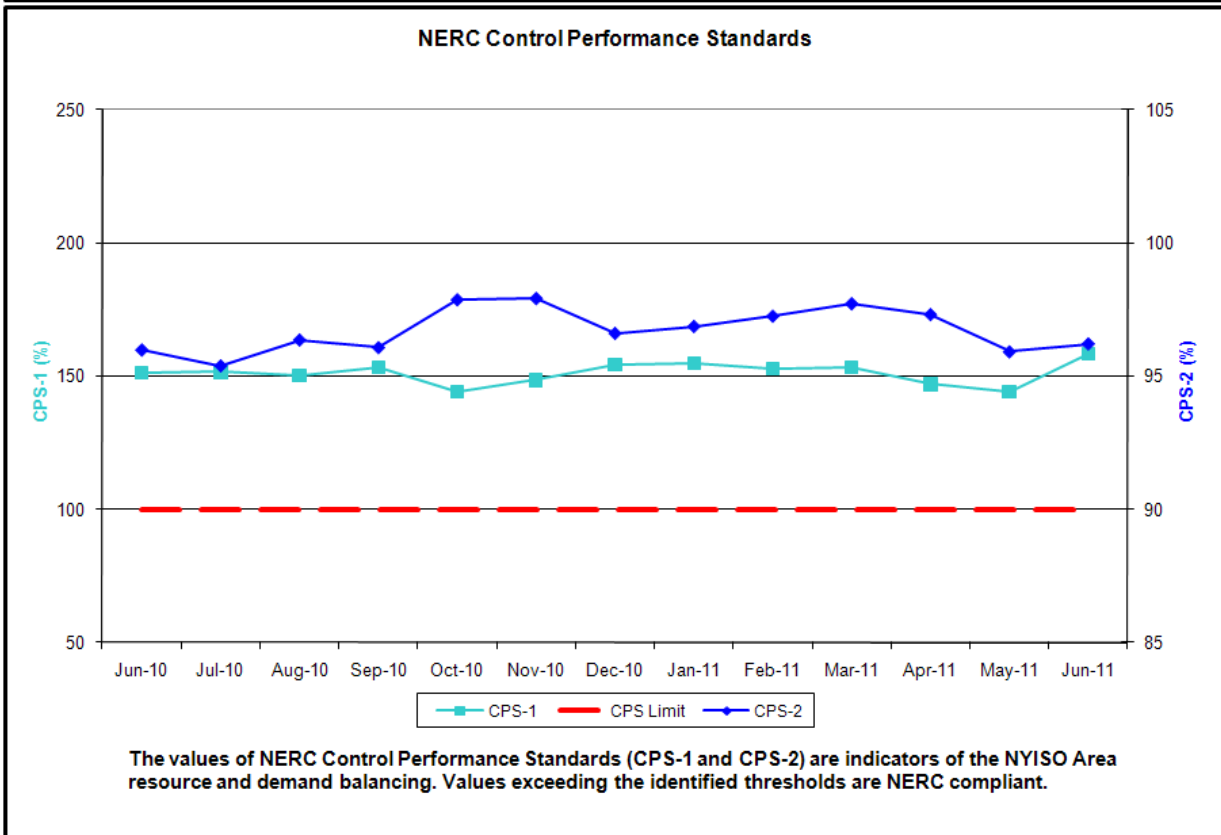
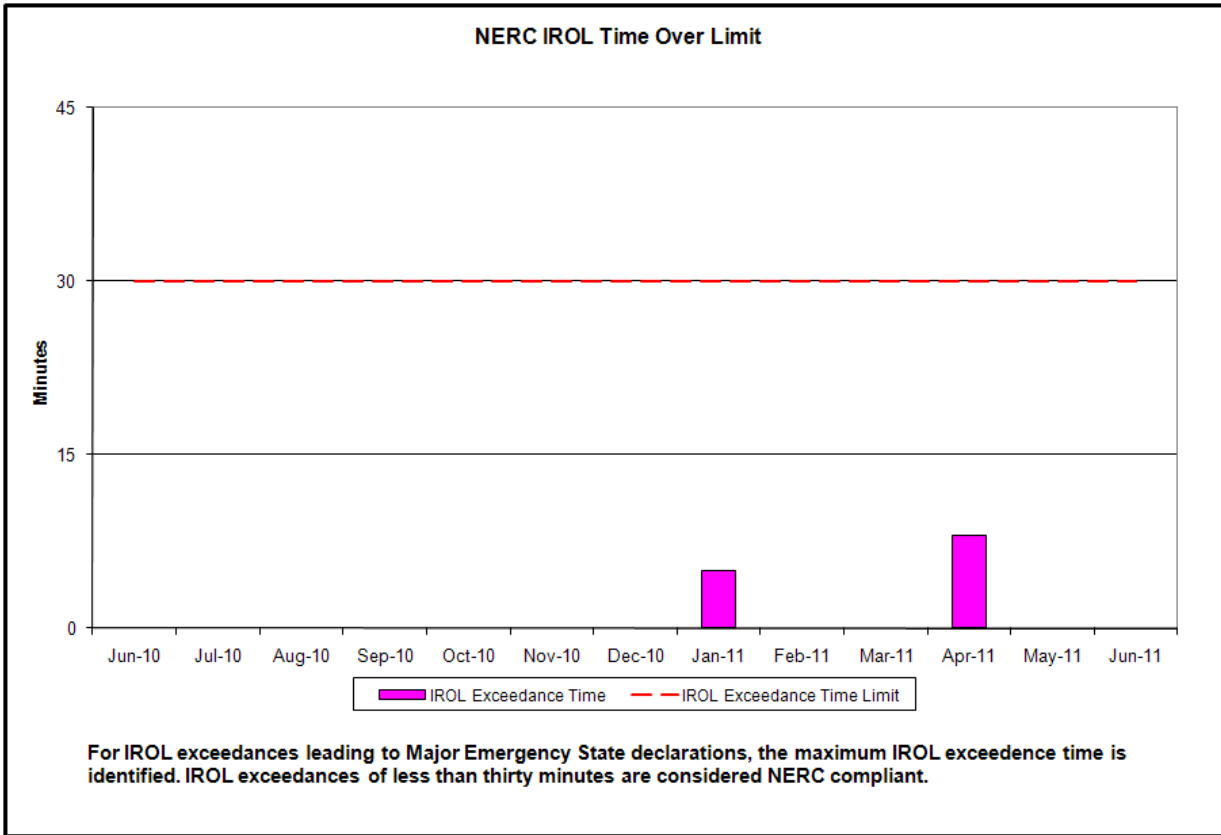
- ◆ **Market Performance Metrics**
 - *RTM Congestion Residuals Monthly Trend*
 - *RTM Congestion Residuals Daily Costs*
 - *RTM Congestion Residuals Event Summary*
 - *RTM Congestion Residuals Cost Categories*
 - *DAM Congestion Residuals Monthly Trend*
 - *DAM Congestion Residuals Daily Costs*
 - *DAM Congestion Residuals Cost Categories*
 - *NYCA Unit Uplift Components Monthly Trend*
 - *NYCA Unit Uplift Components Daily Costs*
 - *ICAP Spot Market Clearing Price*
 - *UCAP Awards*

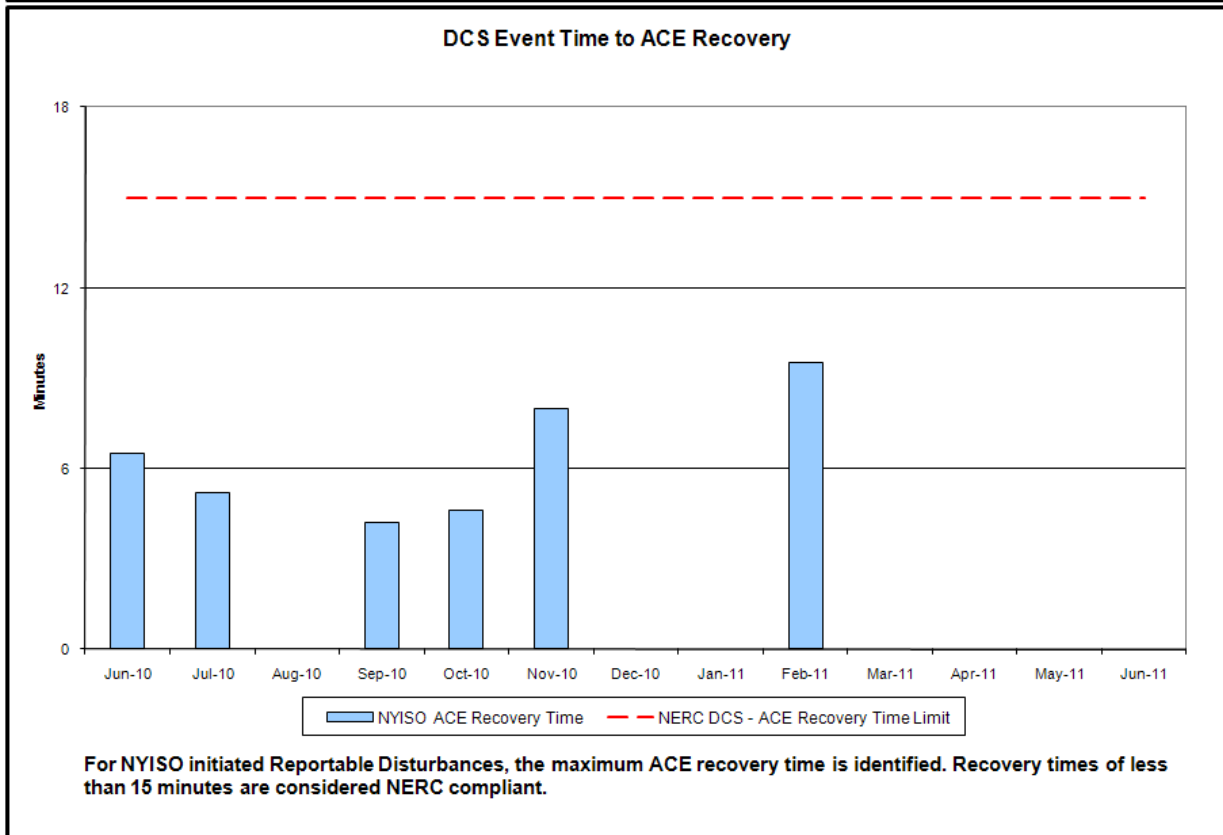
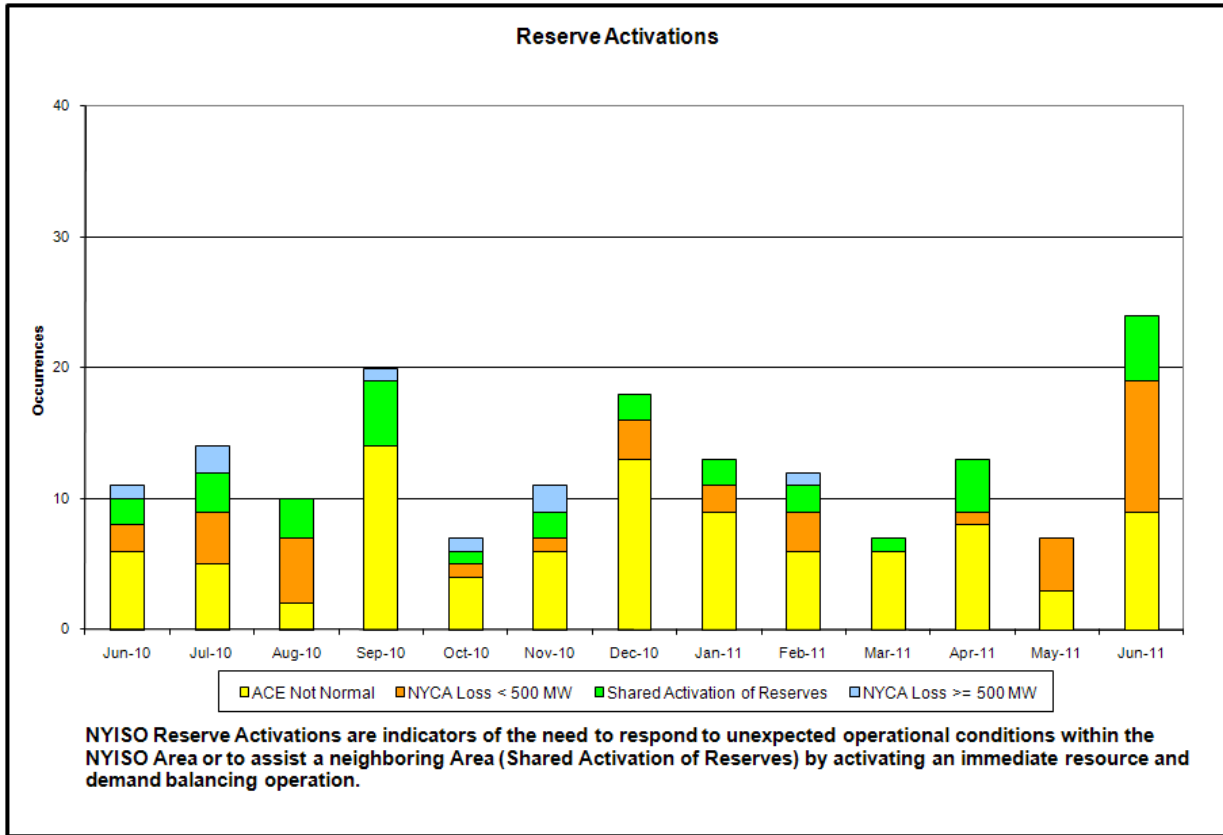
June 2011 Operations Performance Highlights

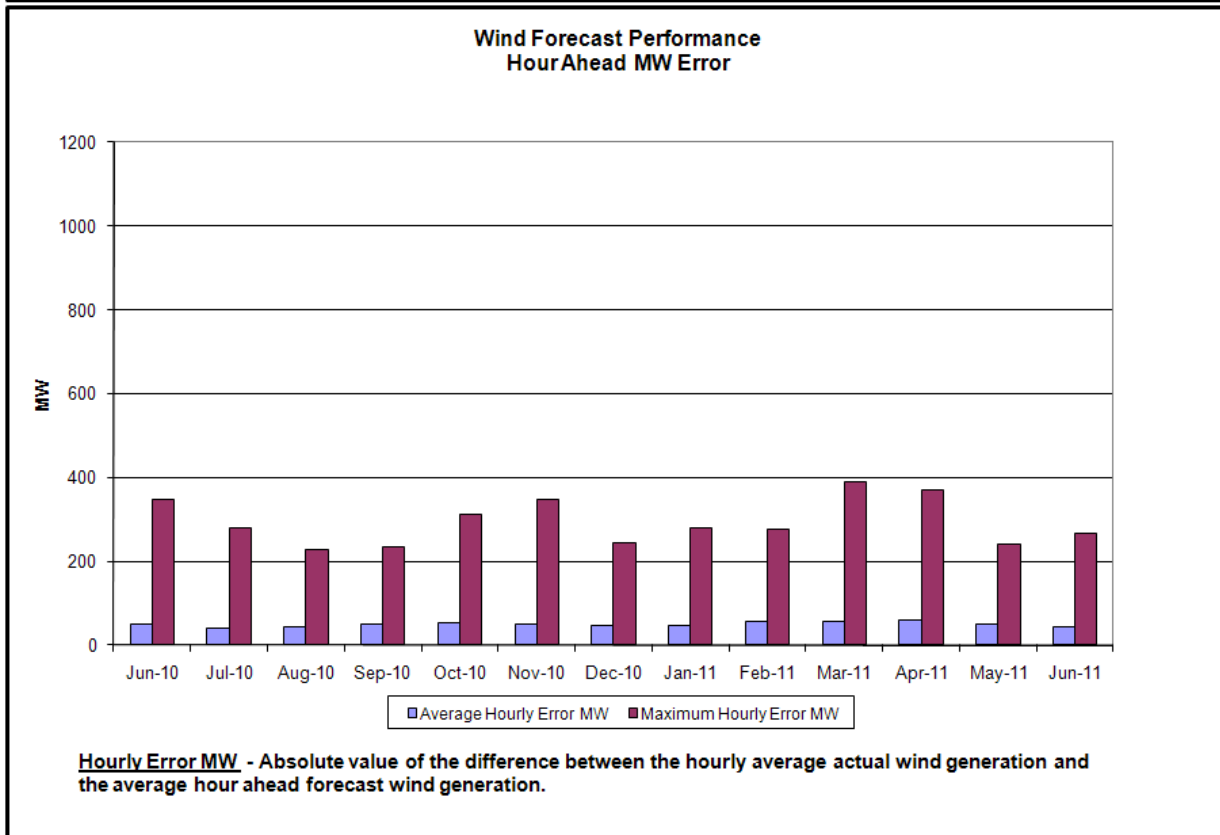
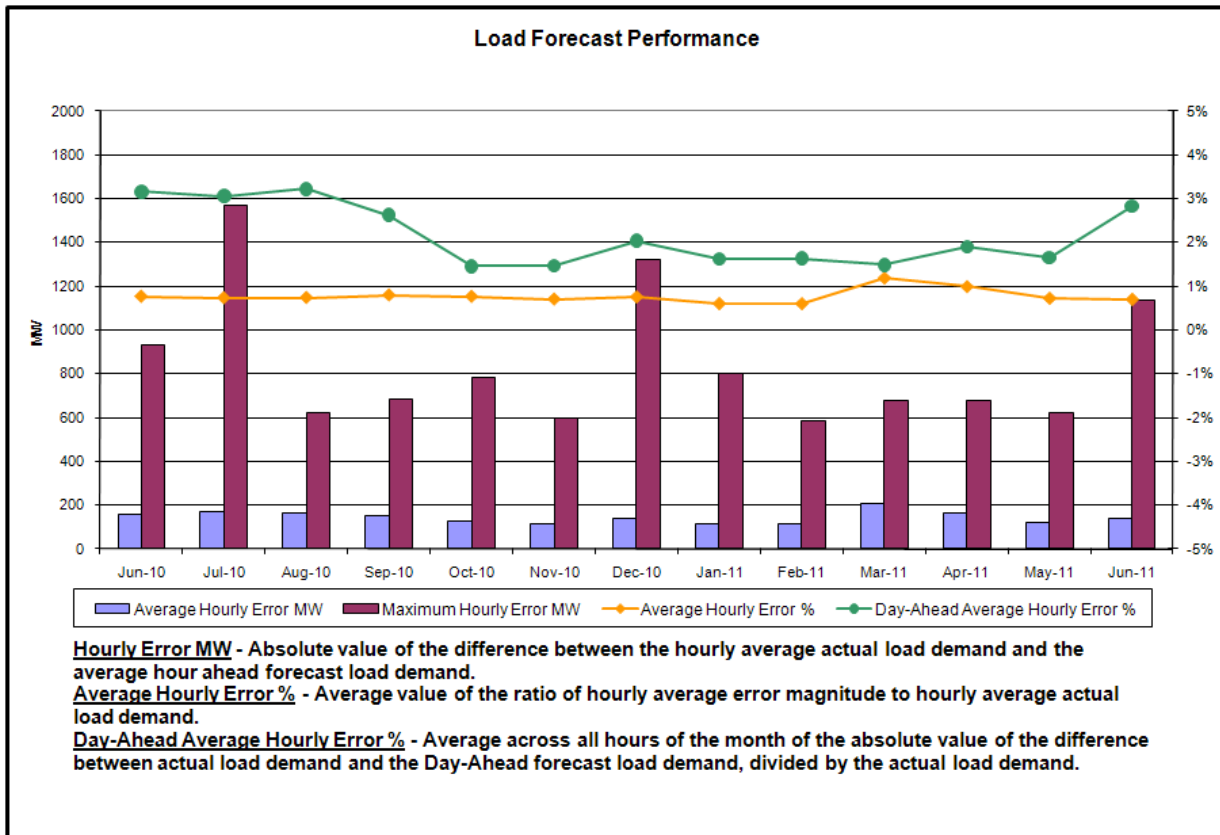
- Peak load of 30,776 MW occurred on 6/9/2011 HB 13
- All-time summer capability period peak load of 33,939 MW occurred on 8/2/2006 HB13
- 38 hours of Thunder Storm Alerts were declared
- Increased number of Reserve Activations due to NYCA unit loss.
- **Continued Levels of Clockwise Lake Erie Loop Flows**
 - Little variation in monthly average values since March
 - 152 hours of NERC TLR level 3 curtailments

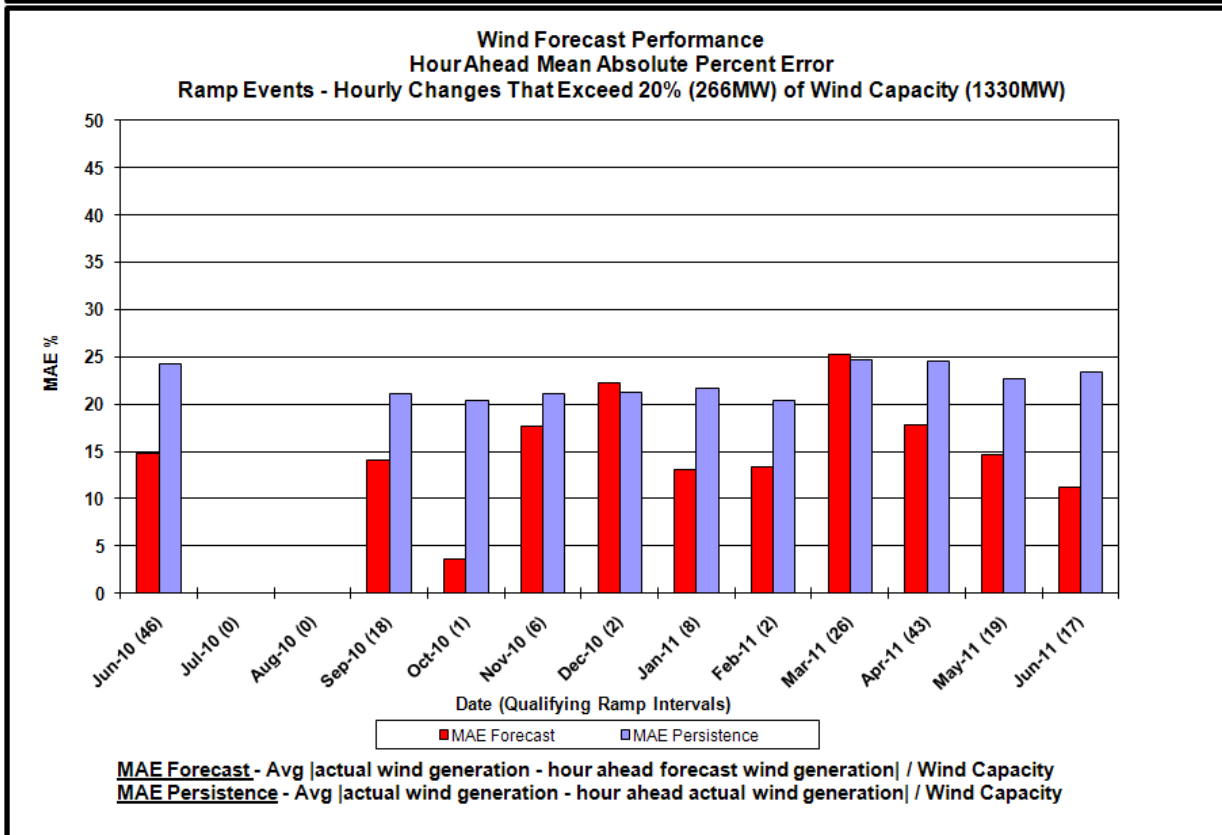
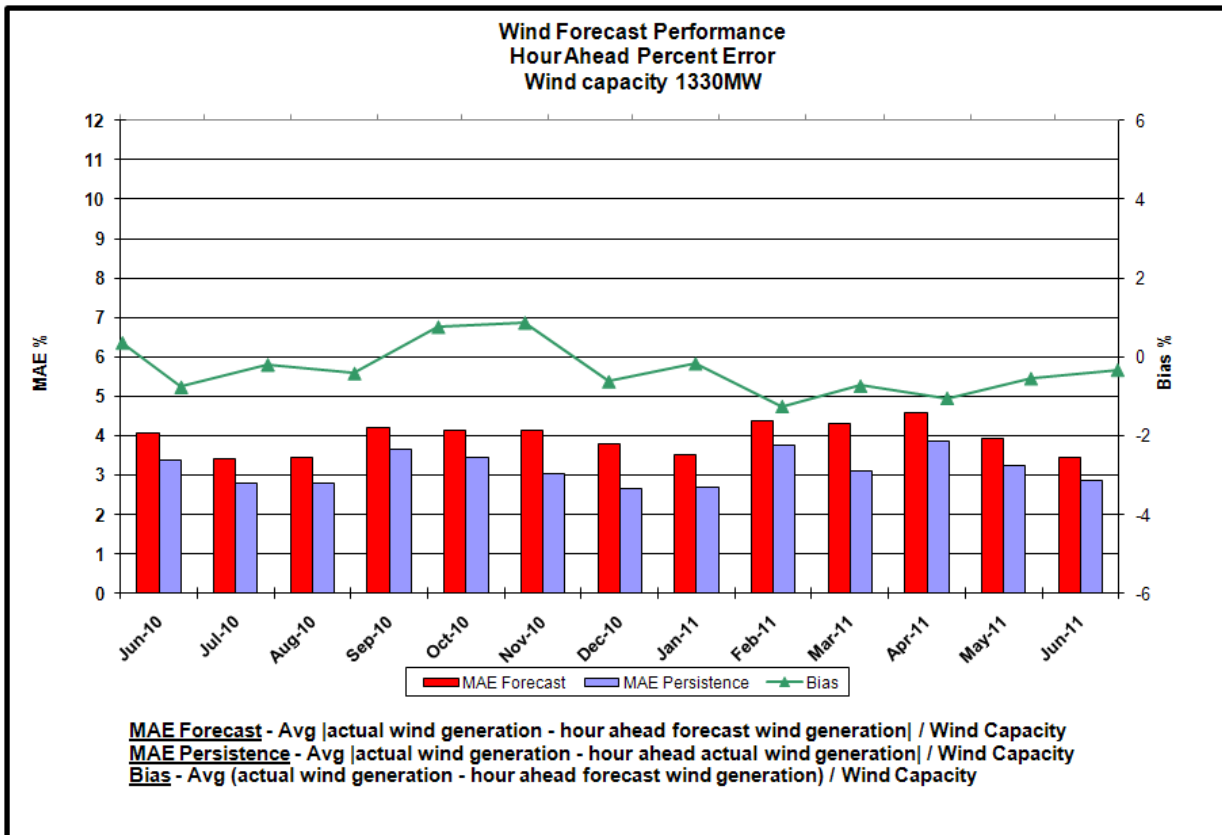
Reliability Performance Metrics

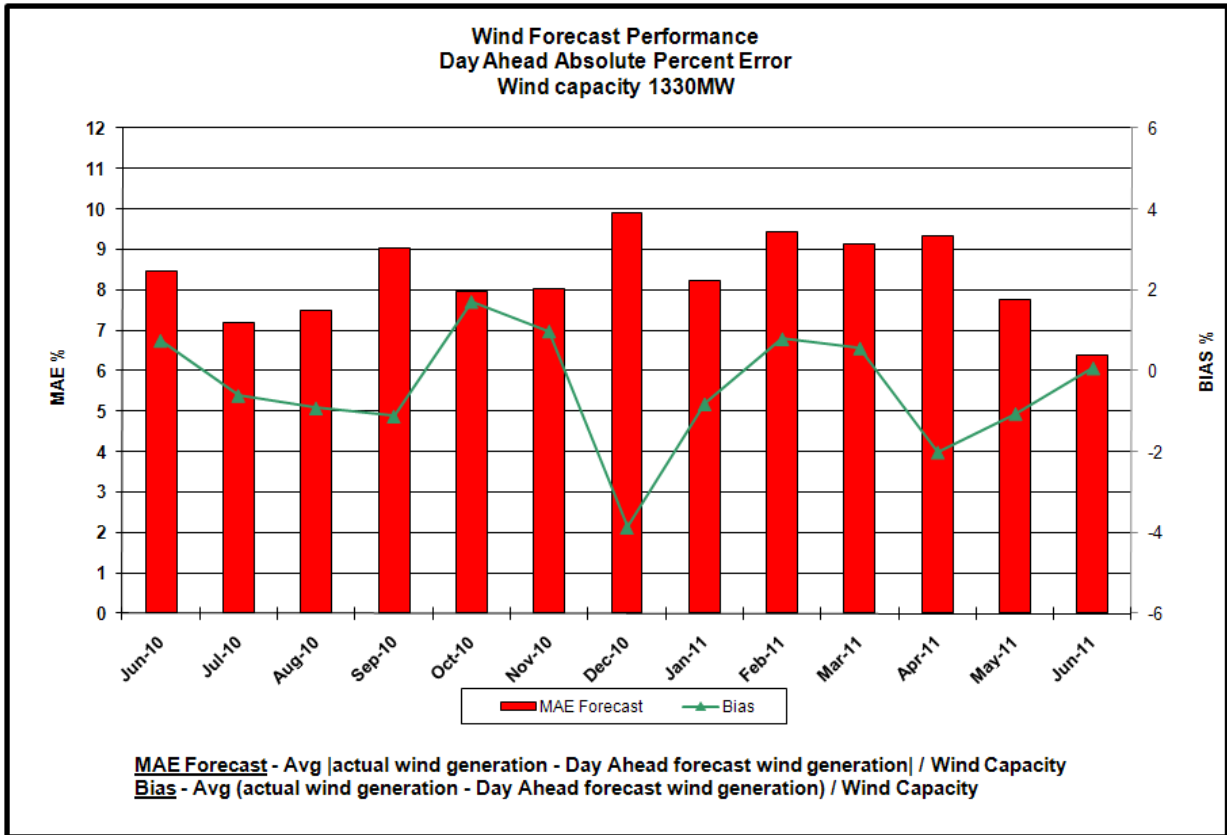


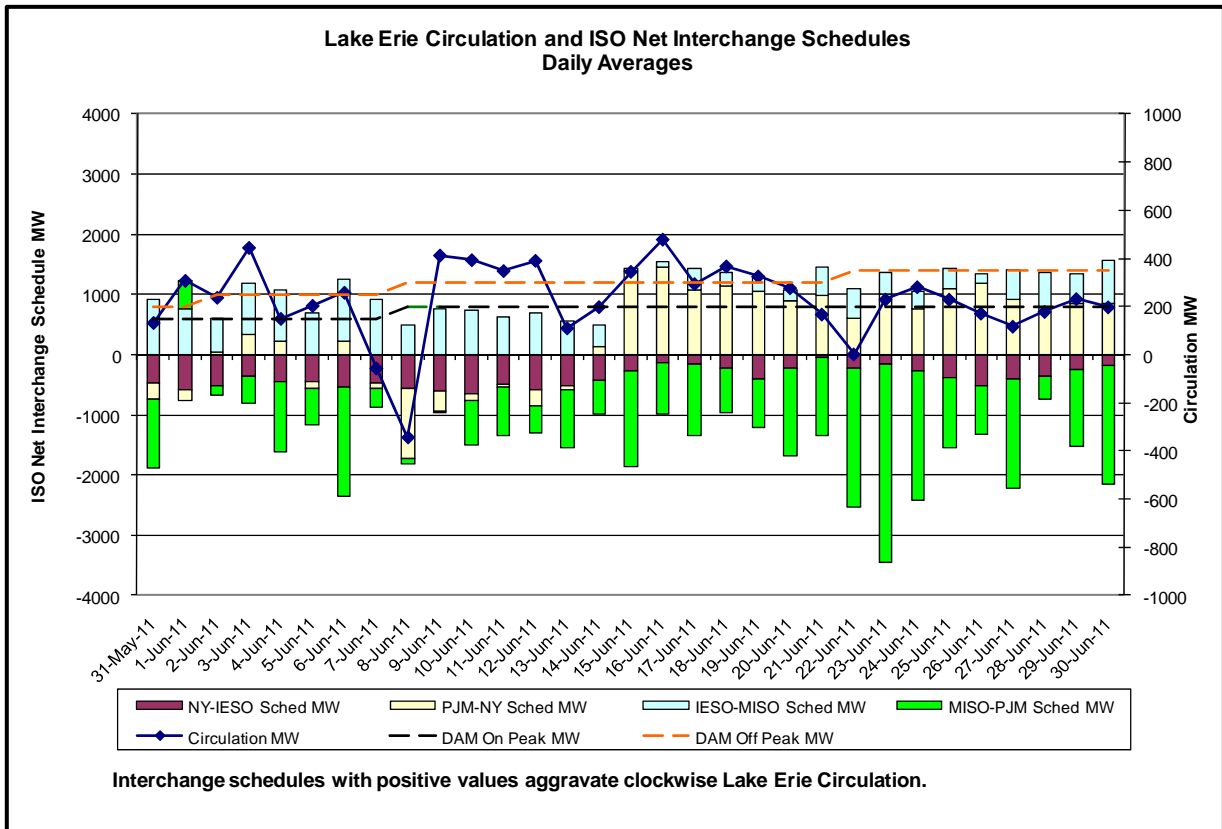
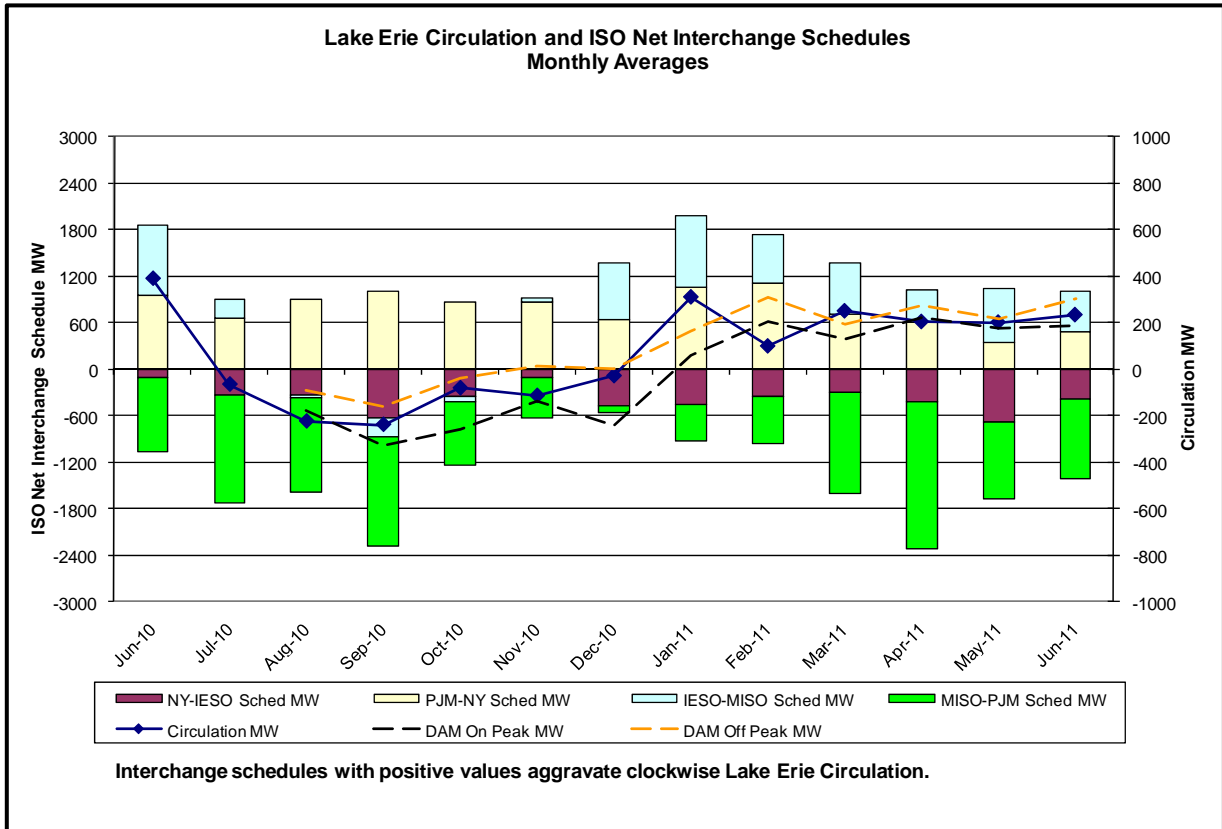




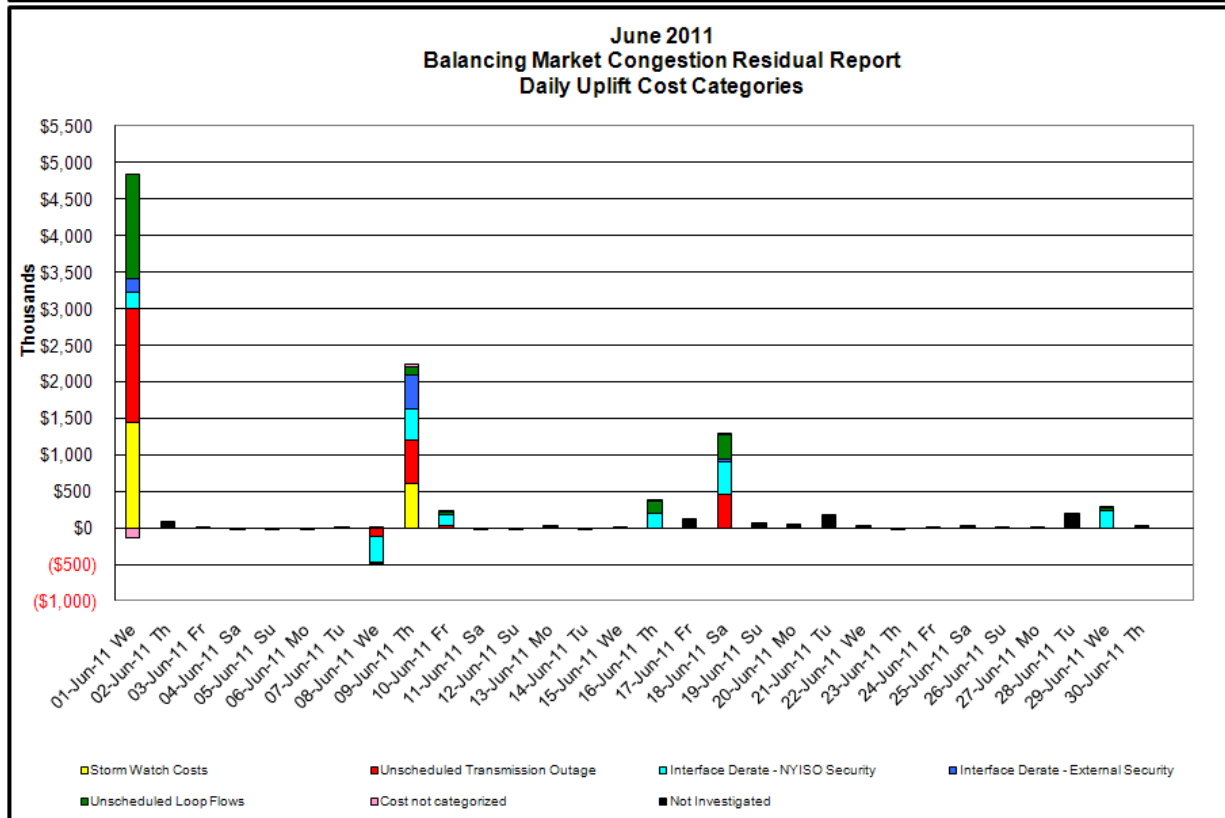
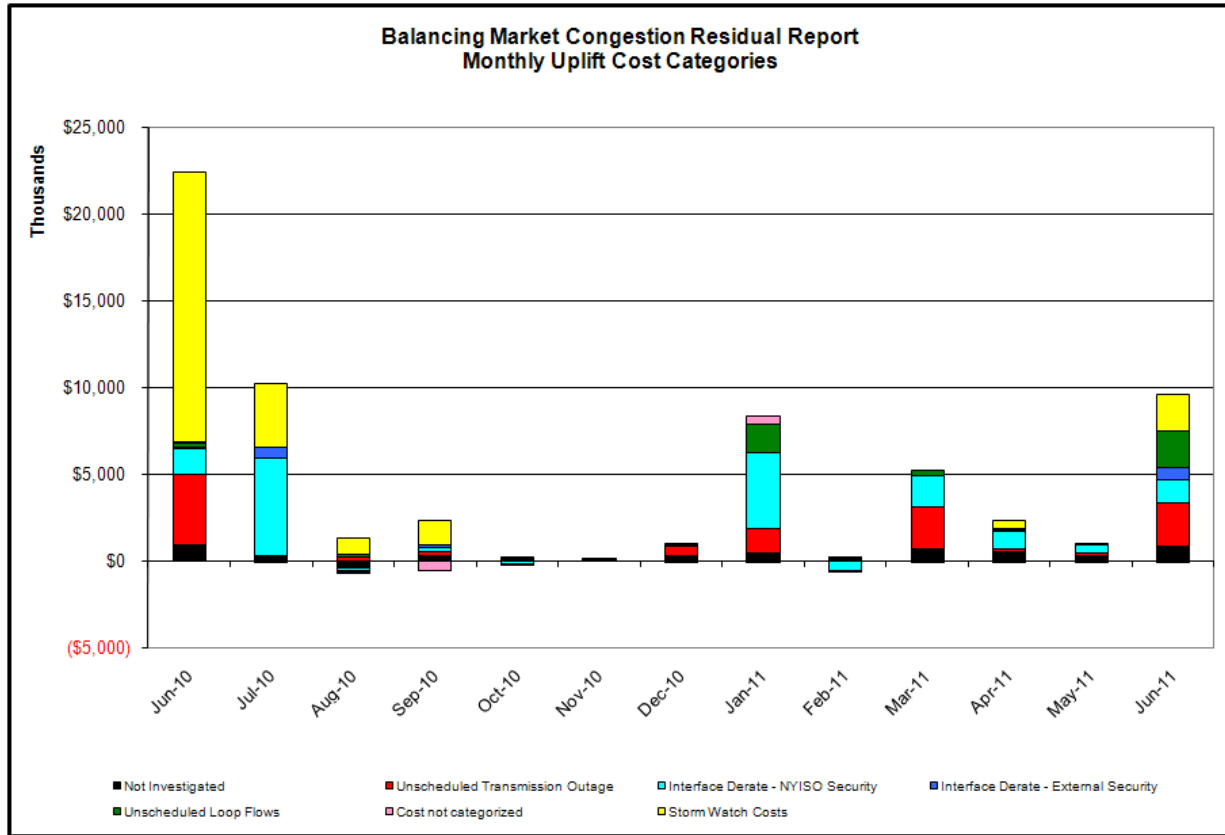








Market Performance Metrics



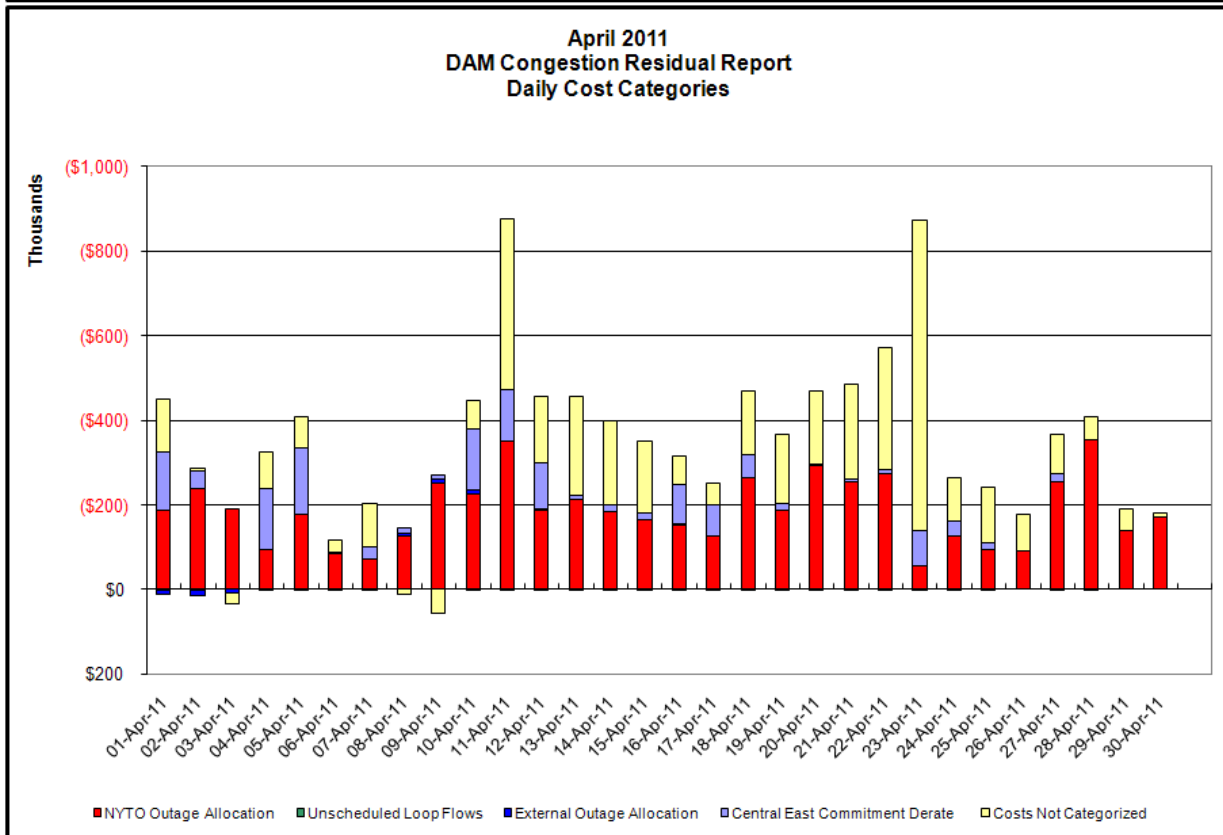
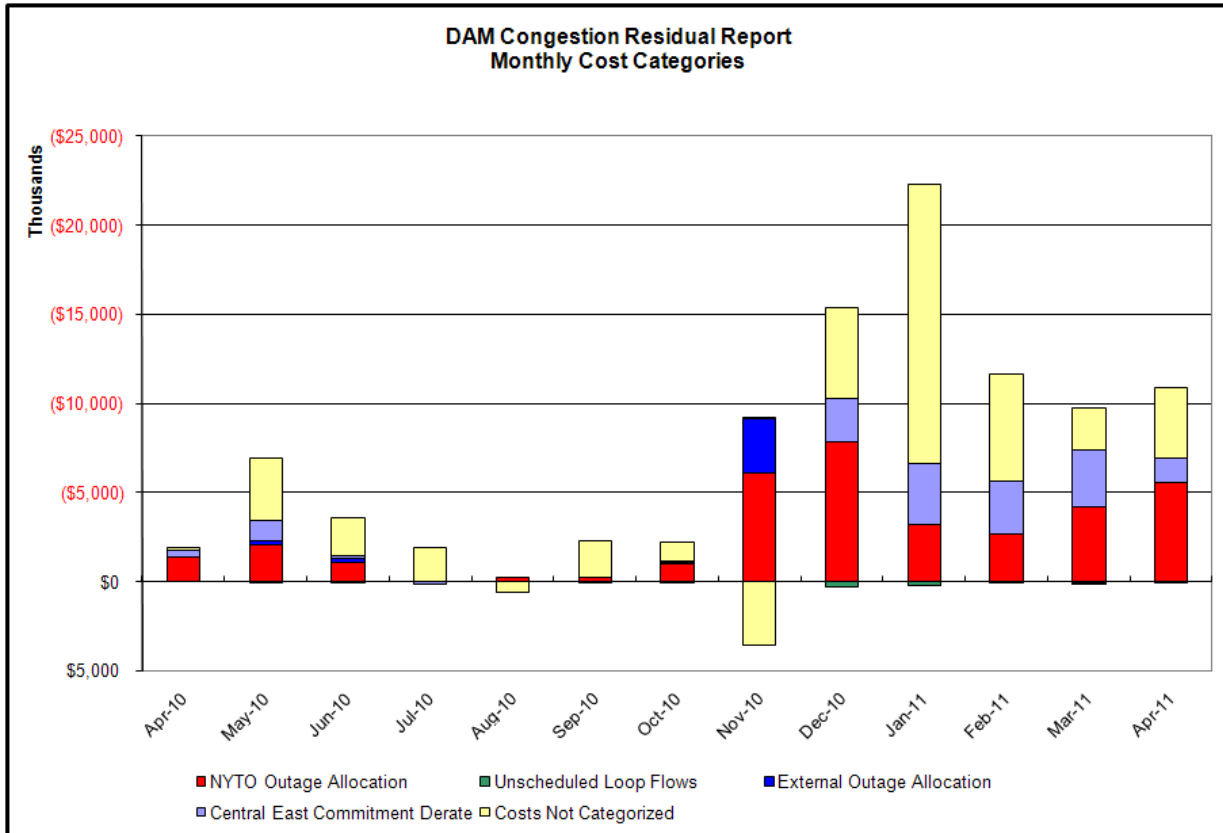
Day's investigated in June:1,8,9,10,16,18,29		
Event	Date (yyyy)	Description
	6/1/2011	14-17 Thunder Storm Alert
	6/1/2011	12-18,20 Forced outage of Norwalk Harbor-Northport 138kV (#1385)
	6/1/2011	1 NYCA DNI Ramp Limit
	6/1/2011	23 Uprate Central East
	6/1/2011	17-18,20 Derate Dunwoodie-Shore Road 345kV (#Y50)
	6/1/2011	11,22 Uprate GoethalsS-GowanusS 345kV (#26)
	6/1/2011	11,22 Uprate GoethalsN-GowanusN 345kV (#25)
	6/1/2011	12-14,20 Derate Leeds-New Scotland 345kV (#93) for I/o Leeds-New Scotland 345kV (#94)
	6/1/2011	12-14,20 Derate Athens-Pleasant Valley 345kV (#91) for I/o Leeds Pleasant Valley 345kV (#92)
	6/1/2011	17-18 NE_AC-NY Scheduling Limit
	6/1/2011	19 HQ_CHAT DNI Ramp Limit
	6/1/2011	14-15 HQ_CHAT-NY Scheduling Limit
	6/1/2011	14-17 Lake Erie Clockwise Circulation, DAM-RTM exceeds 125MW; Leeds-Pleasant Valley (#92)
	6/8/2011	17-23 Forced outage Berkshire-Alps 345kV (#393), New Scotland-Alps 345kV (#2), Reynolds-Alps 345kV (#1)
	6/8/2011	9,13-22 NYCA DNI Ramp Limit
	6/8/2011	21-23 Derate Vernon/Greenwood
	6/8/2011	22-23 Derate Greenwood-Kent Avenue 138kV (#31232) for I/o TWR:GOETHALS 22, 21, A2253
	6/8/2011	13-14,19-20 Uprate Greenwood-GowanusS 138kV (#42232)
	6/8/2011	9 Uprate GowanusS 138kV PAR (#R14) for I/o TWR:GOETHALS 22, 21, A2253
	6/8/2011	9,13-14,19-20 Uprate Greenwood-GowanusN 138kV (#42231)
	6/8/2011	23 NE_AC-NY DNI Ramp Limit
	6/8/2011	20-22 NE_AC-NY Scheduling Limit
	6/8/2011	20,23 PJM_AC-NY DNI Ramp Limit
	6/9/2011	15-21 Thunder Storm Alert
	6/9/2011	13 Forced outage Adirondack-Moses 230kV (#MA1)
	6/9/2011	11-21 Forced outage Berkshire-Alps 345kV (#393), New Scotland-Alps 345kV (#2), Reynolds-Alps 345kV (#1)
	6/9/2011	15,20,23 NYCA DNI Ramp Limit
	6/9/2011	15,17-19 Derate Dunwoodie-Shore Road 345kV (#Y50)
	6/9/2011	11 Derate Dunwoodie-Shore Road 345kV (#Y50) for I/o SCB Sprainbrook #RNS2
	6/9/2011	11-13,15 Derate Dysinger East
	6/9/2011	11-12 Derate Leeds Pleasant Valley 345kV (#92) for I/o Athens-Pleasant Valley 345kV (#91)
	6/9/2011	10,16 PJM_AC-NY DNI Ramp Limit
	6/9/2011	13,15-16,18-19 NE_AC-NY Scheduling Limit
	6/9/2011	Lake Erie Clockwise Circulation, DAM-RTM exceeds 125MW: Dysinger East, Leeds-Pleasant Valley (#92)
	6/9/2011	11,13,15
	6/10/2011	9,10,12-14 Forced outage of Northport PS 1 PAR Adjustment
	6/10/2011	5-6 NYCA DNI Ramp Limit
	6/10/2011	10 Derate Dunwoodie-Shore Road 345kV (#Y50)
	6/10/2011	10,12-19 Derate Dunwoodie-Shore Road 345kV (#Y50) for I/o SCB Sprainbrook #RNS2
	6/10/2011	0,12-17 Derate Greenwood-GowanusN 138kV (#42231)
	6/10/2011	13,15,17 Derate Greenwood-GowanusS 138kV (#42232)
	6/10/2011	9,10,12-18 Derate Leeds-New Scotland 345kV (#93) for I/o Leeds-New Scotland 345kV (#94)
	6/10/2011	9,10,12-13,17-19 Derate Mott Haven-Dunwoodie 345kV (#71)
	6/10/2011	15-19 Derate Vernon/Greenwood
	6/10/2011	10,13-14,16-18 Lake Erie Clockwise Circulation, DAM-RTM exceeds 125MW; Leeds-New Scotland (#93)
	6/16/2011	5,9,15 NYCA DNI Ramp Limit
	6/16/2011	9-17,20,21 Derate Leeds Pleasant Valley 345kV (#92) for I/o Athens-Pleasant Valley 345kV (#91)
	6/16/2011	11 Derate Central East
	6/16/2011	10-17,20,21 Lake Erie Clockwise Circulation, DAM-RTM exceeds 125MW; Central East, Leeds-New Scotland (#93)
	6/18/2011	10-21,23 Forced outage Leeds-New Scotland 345kV (#94)
	6/18/2011	10-21,23 Derate Leeds-New Scotland 345kV (#93) for I/o Leeds-Gilboa 345kV (#GL3)
	6/18/2011	16,17,23 Derate GowanusN-Greenwood 138kV (#42231)
	6/18/2011	16 PJM_AC-NY DNI Ramp Limit
	6/18/2011	10,11,13-17,19-21,23 Lake Erie Clockwise Circulation, DAM-RTM exceeds 125MW; Central East, Leeds-New Scotland (#93)
	6/29/2011	10-18 Derate Leeds-New Scotland 345kV (#93) for I/o Leeds-New Scotland 345kV (#94)
	6/29/2011	7,18 Derate Rainey-Vernon 138kV (#36312)
	6/29/2011	7,12-14,17-18 Derate Dunwoodie-Shore Road 345kV (#Y50) for I/o SCB:SPBK(#RNS2)
	6/29/2011	7 Derate Fox Hills-Willow Brook 138kV (#29212)
	6/29/2011	7,18 Derate GowanusN-Greenwood 138kV (#42231)
	6/29/2011	8 Uprate GowanusS 138kV PAR (#R14) for I/o TWR:Goethals
	6/29/2011	11,12,17 Lake Erie Clockwise Circulation, DAM-RTM exceeds 125MW; Central East, Leeds-New Scotland (#93)

Real-Time Balancing Market Congestion Residual (Uplift Cost) Categories

<u>Category</u>	<u>Cost Assignment</u>	<u>Events Types</u>	<u>Event Examples</u>
Storm Watch	Zone J	Thunderstorm Alert (TSA)	TSA Activations
Unscheduled Transmission Outage	Market-wide	Reduction in DAM to RTM transfers related to unscheduled transmission outage	Forced Line Outage, Unit AVR Outages
Interface Derate - NYISO Security	Market-wide	Reduction in DAM to RTM transfers not related to transmission outage	Interface Derates due to RTM voltages
Interface Derate - External Security	Market-wide	Reduction in DAM to RTM transfers related to External Control Area Security Events	TLR Events, External Transaction Curtailments
Unscheduled Loop Flows	Market-wide	Changes in DAM to RTM unscheduled loop flows impacting NYISO Interface transmission constraints	DAM to RTM Clockwise Lake Erie Loop Flows greater than 125 MW

Monthly Balancing Market Congestion Report Assumptions/Notes

- 1) Storm Watch Costs are identified as daily total uplift costs
- 2) At a minimum those days with \$ 100 K/HR, shortfall of \$200 K/Day or more, or surplus of \$ 100 K/Day or more are investigated
- 3) Uplift costs associated with multiple event types are apportioned equally by hour
- 4) Investigations began with Dec 2008. Prior months are reported as Not Investigated.



Day-Ahead Market Congestion Residual Categories

<u>Category</u>	<u>Cost Assignment</u>	<u>Events Types</u>	<u>Event Examples</u>
NYTO Outage Allocation	Responsible TO	Direct allocation to NYTO's responsible for transmission equipment status change.	DAM scheduled outage for equipment modeled in-service for the TCC Auction.
Unscheduled Loop Flows	All TO by Monthly Allocation Factor	Residual impact of Lake Erie circulation, MW difference between the DAM and TCC Auction.	Lake Erie Loop Flow Assumptions
External Outage Allocation	All TO by Monthly Allocation Factor	Direct allocation to transmission equipment status change caused by change in status of external equipment.	Tie line required out-of-service by TO of neighboring control area.
Central East Commitment Derate	All TO by Monthly Allocation Factor	Reductions in the DAM Central East_VC limit as compared to the TCC Auction limit, which are not associated with transmission line outages.	

