

# ***Operations Performance Metrics Monthly Report***



## ***January 2012 Report***

### **Operations & Reliability Department New York Independent System Operator**

Prepared by NYISO Operations Analysis and Services, based on settlements initial invoice data collected on or before February 8, 2012.

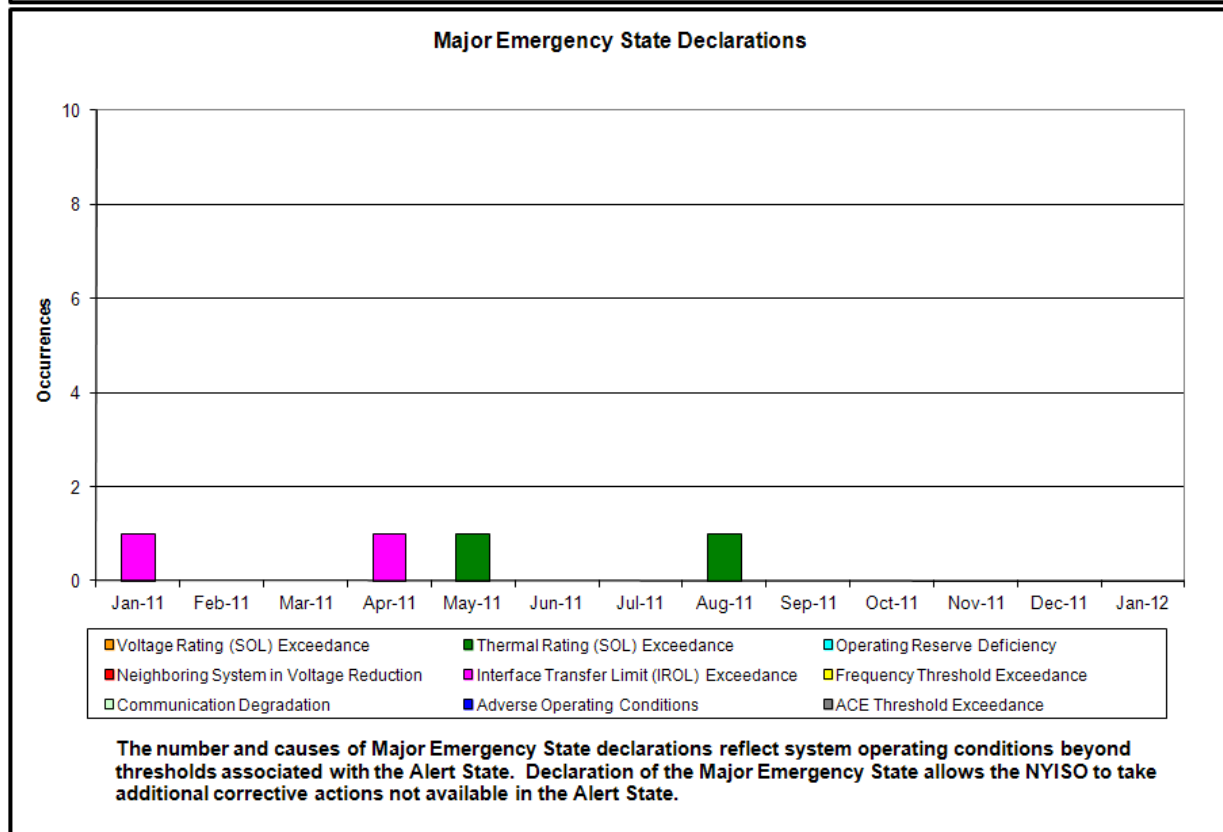
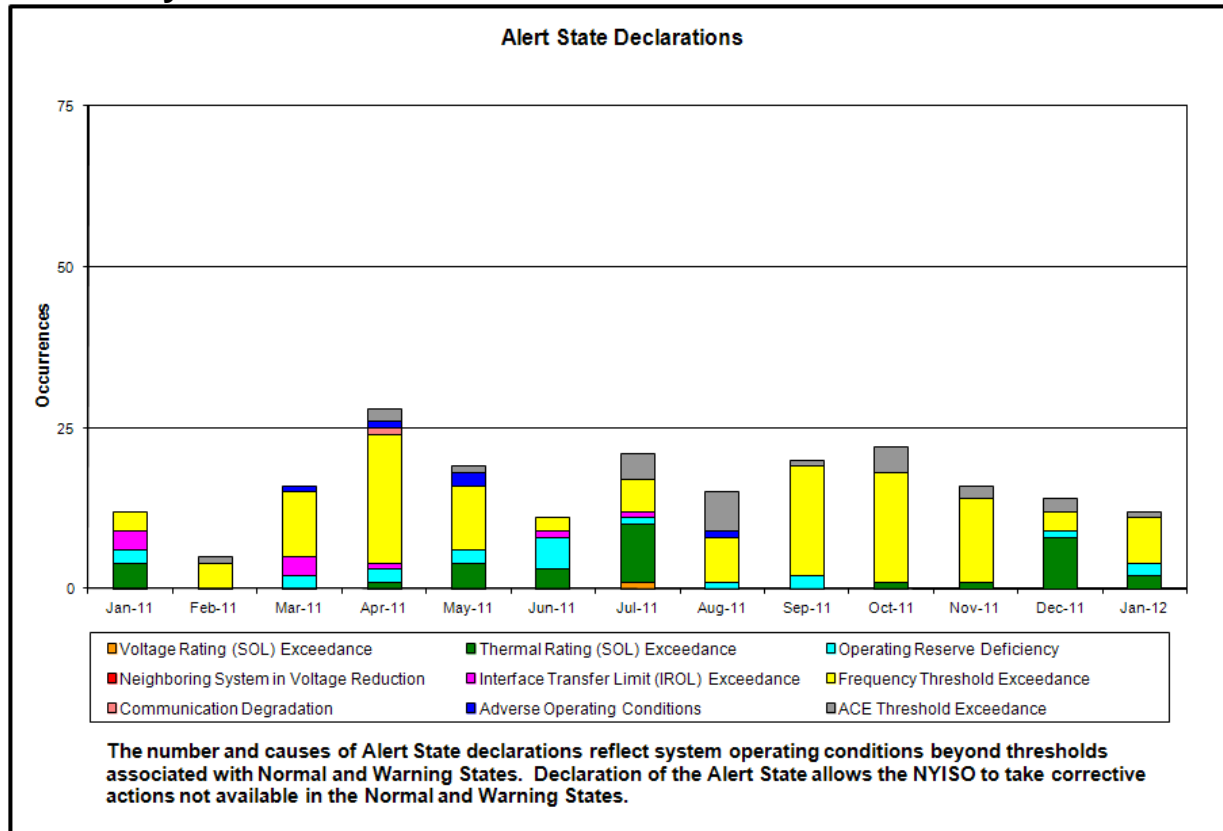
## **Table of Contents**

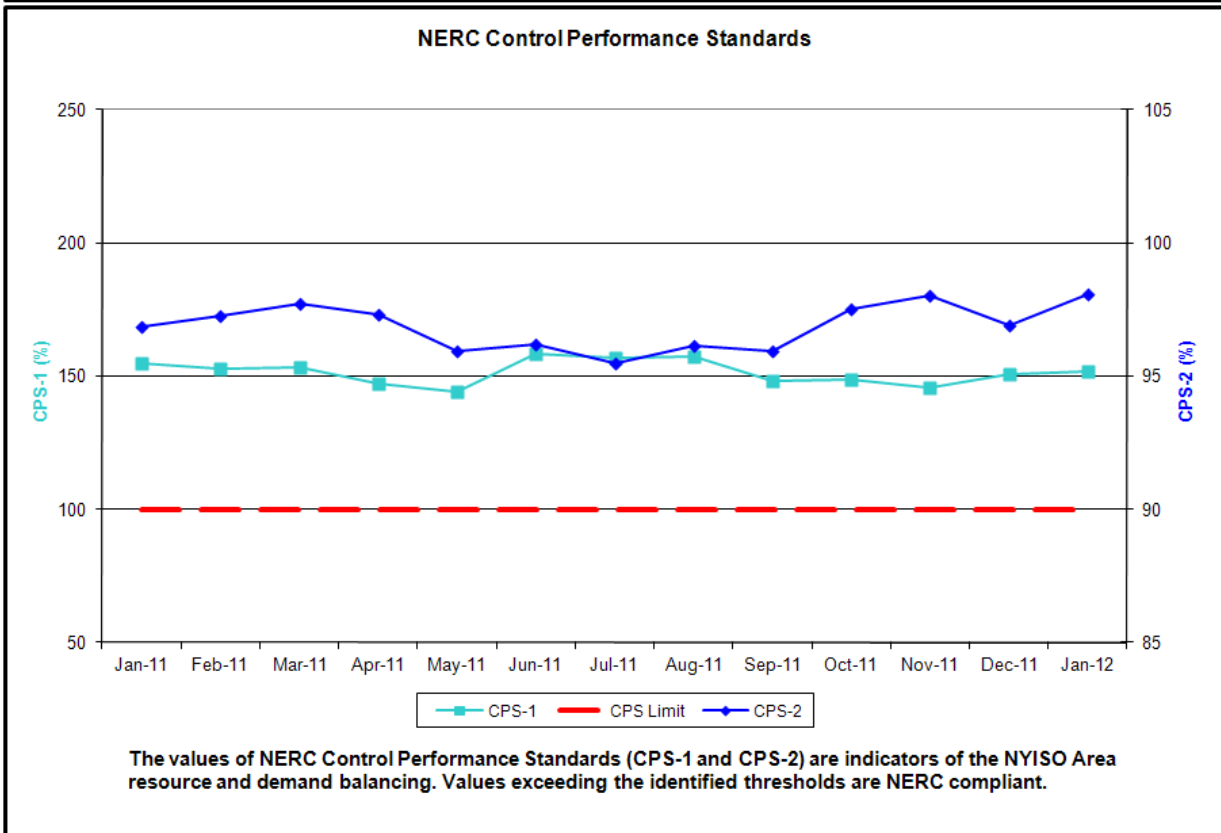
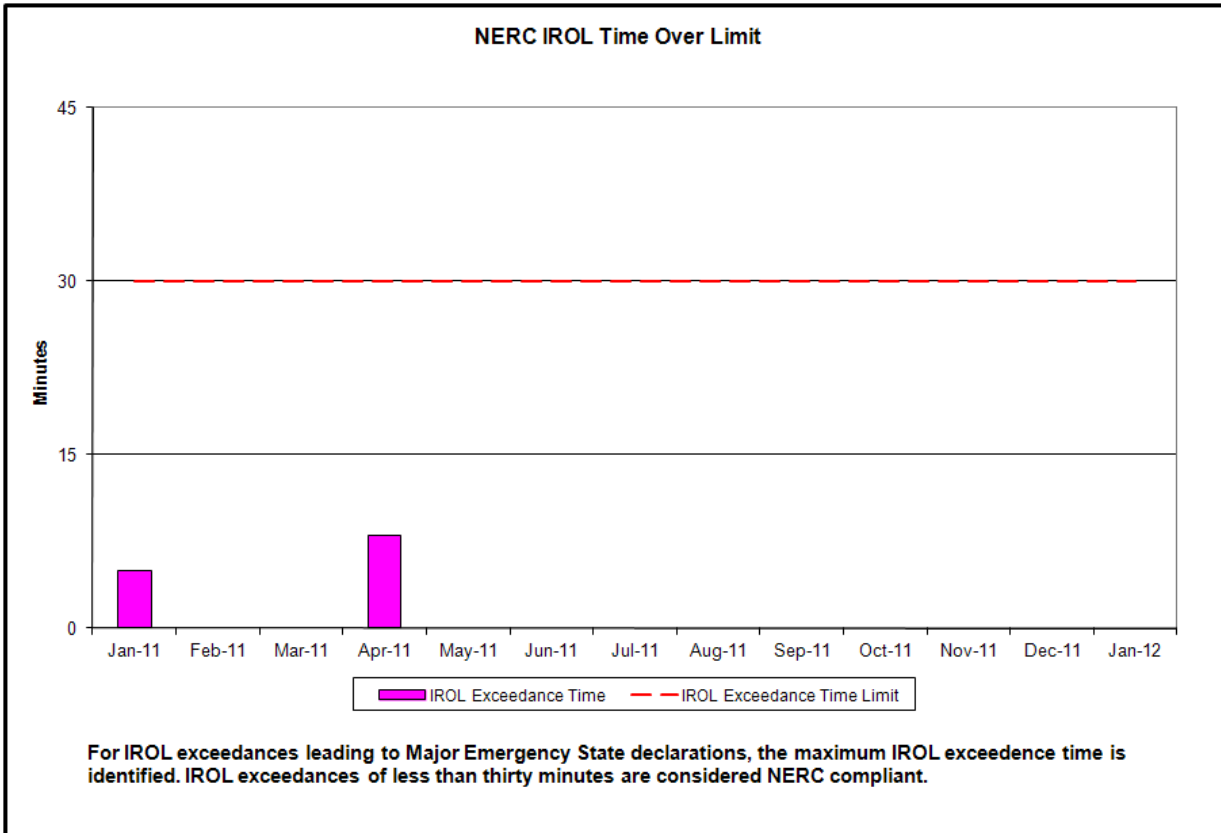
- ◆ **Highlights**
  - *Operations Performance*
  
- ◆ **Reliability Performance Metrics**
  - *Alert State Declarations*
  - *Major Emergency State Declarations*
  - *IROL Exceedance Times*
  - *Balancing Area Control Performance*
  - *Reserve Activations*
  - *Disturbance Recovery Times*
  - *Load Forecasting Performance*
  - *Wind Forecasting Performance*
  - *Lake Erie Circulation and ISO Schedules*
  
- ◆ **Market Performance Metrics**
  - *RTM Congestion Residuals Monthly Trend*
  - *RTM Congestion Residuals Daily Costs*
  - *RTM Congestion Residuals Event Summary*
  - *RTM Congestion Residuals Cost Categories*
  - *DAM Congestion Residuals Monthly Trend*
  - *DAM Congestion Residuals Daily Costs*
  - *DAM Congestion Residuals Cost Categories*
  - *NYCA Unit Uplift Components Monthly Trend*
  - *NYCA Unit Uplift Components Daily Costs*
  - *Local Reliability Costs Monthly Trend & Commitment Hours*
  - *ICAP Spot Market Clearing Price*
  - *UCAP Awards*

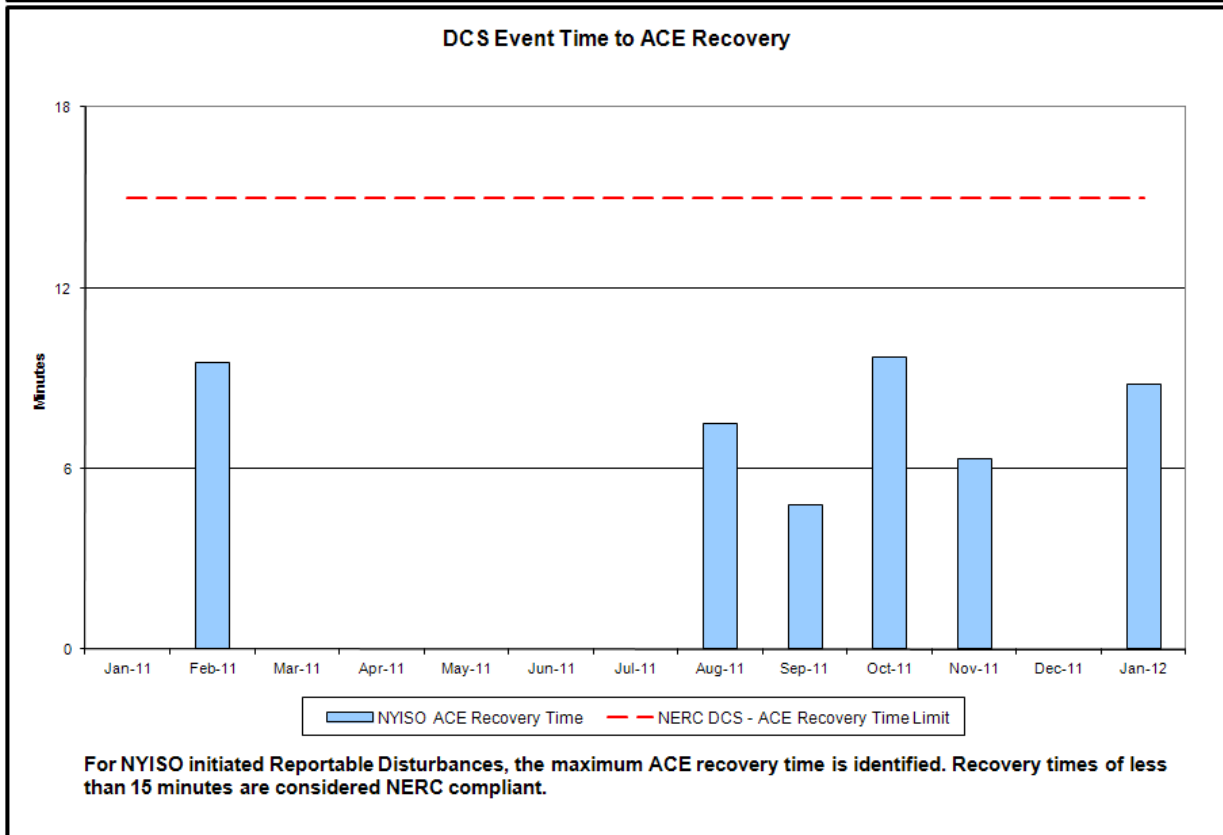
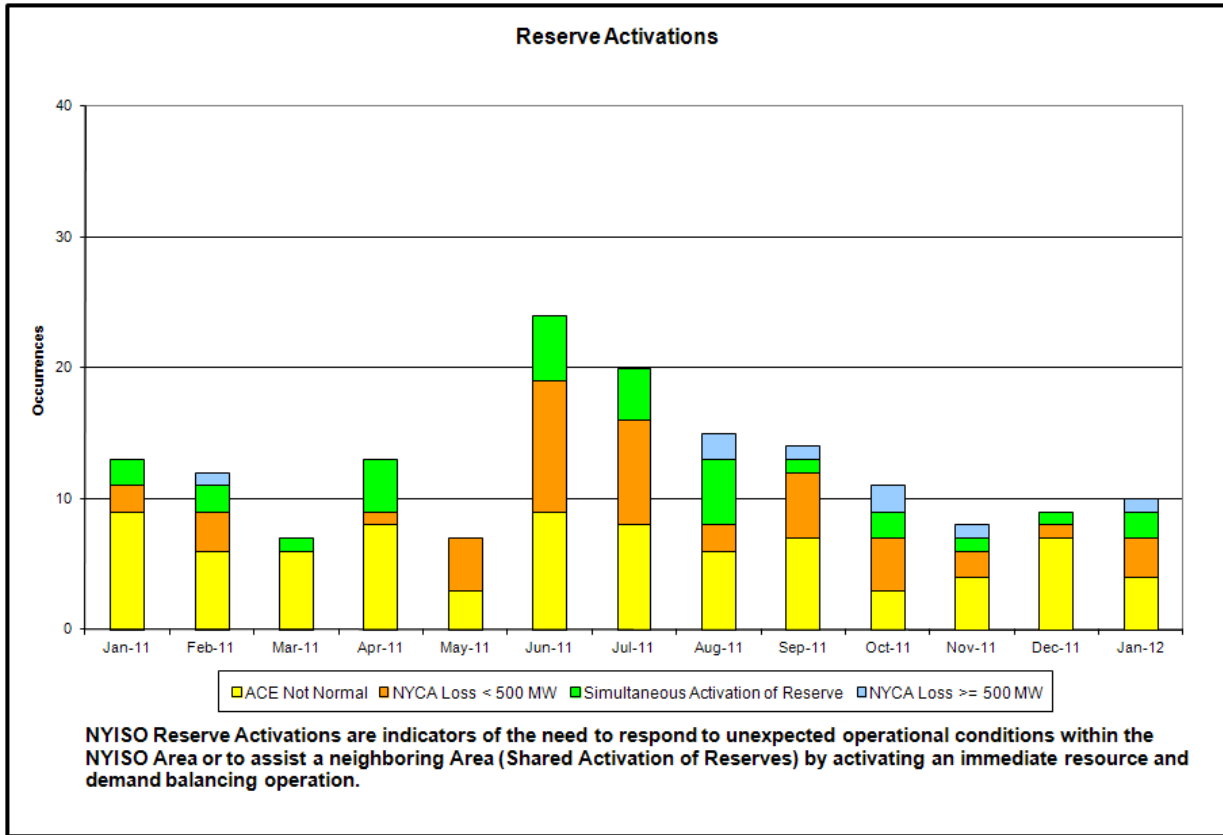
## January 2012 Operations Performance Highlights

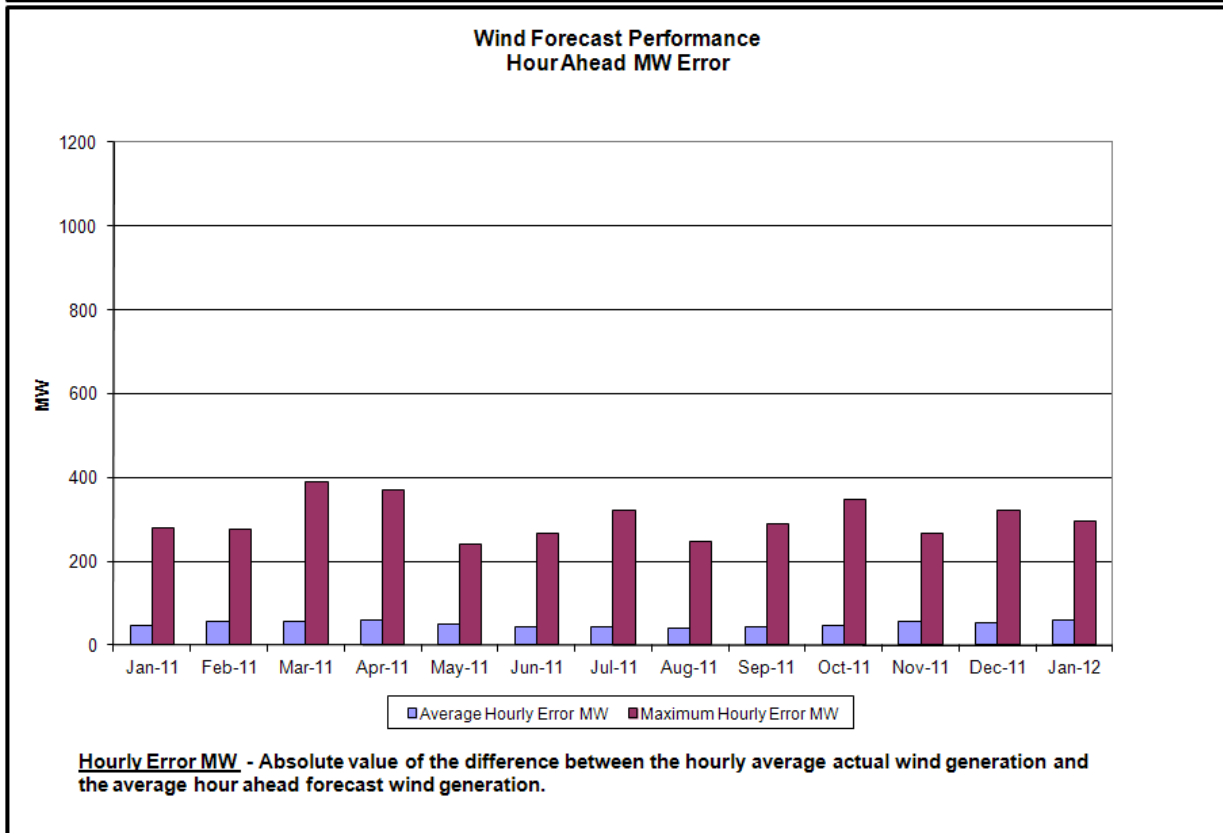
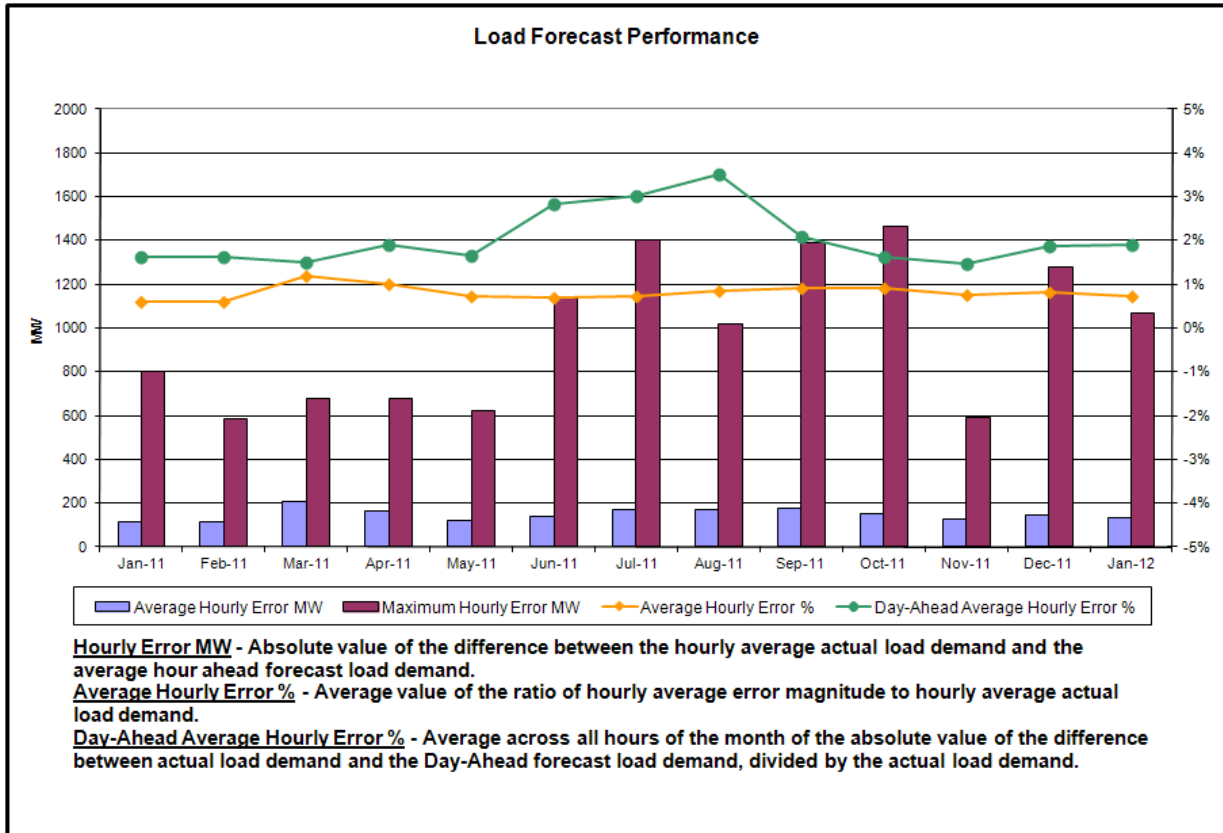
- Peak load of 23,901 MW occurred on 1/3/2012 HB 17
- All-time winter capability period peak load of 25,541 MW occurred on 12/20/2004 HB 17
- 0 hours of Thunder Storm Alerts were declared.
- **Average Lake Erie Loop Flows are near zero**
  - 24 hours of NERC TLR level 3 curtailments

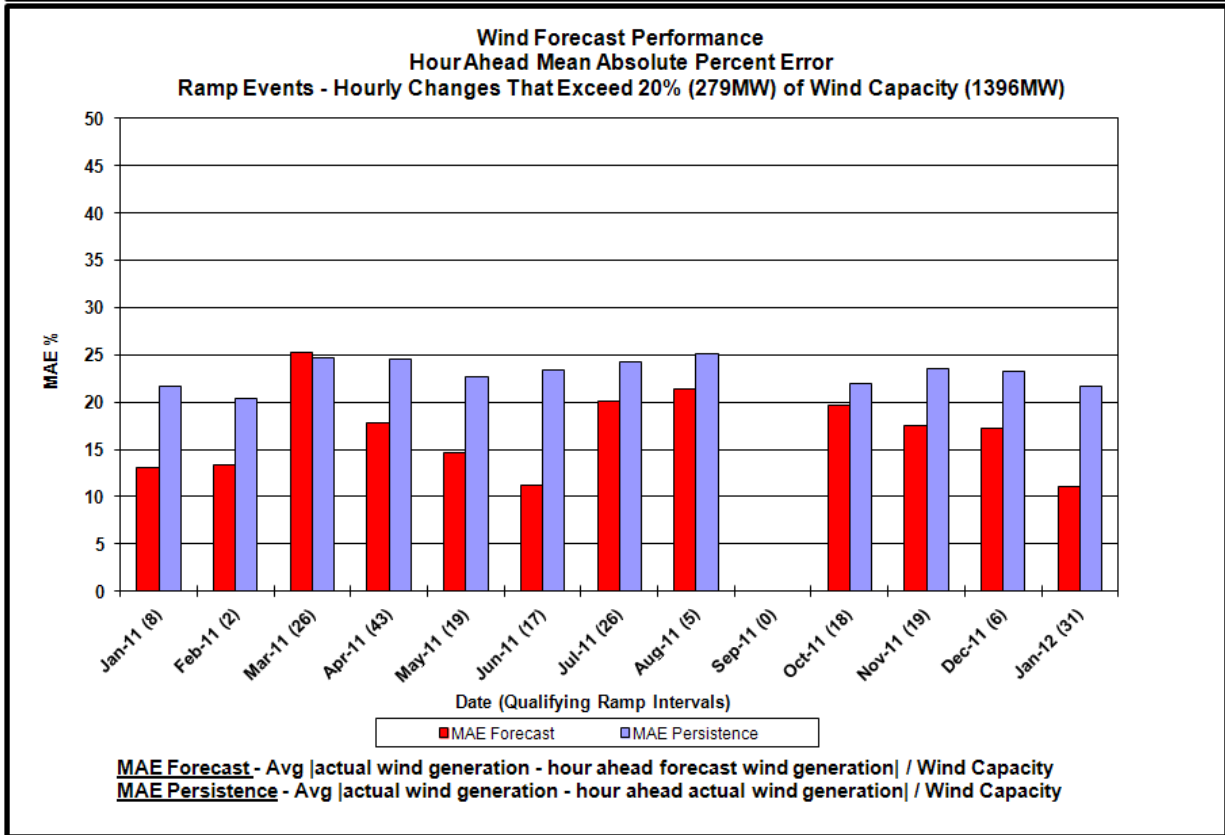
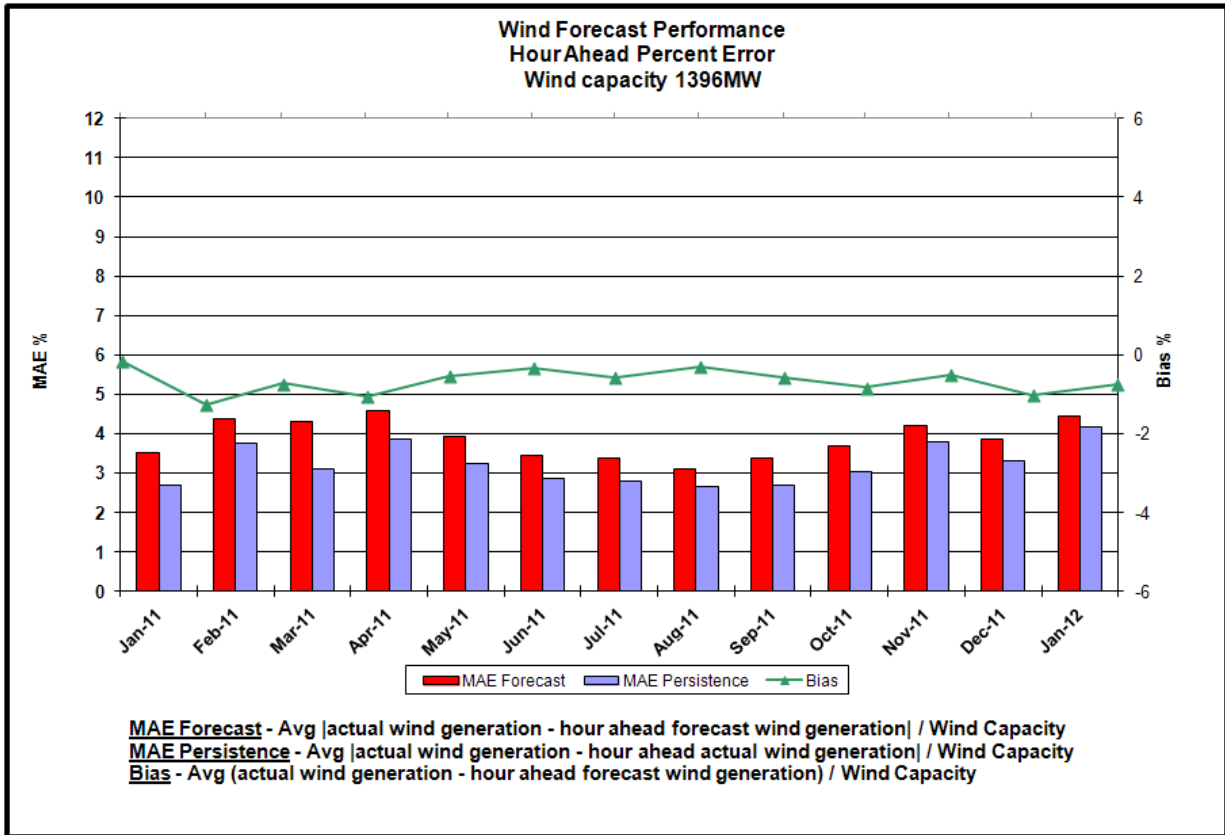
## Reliability Performance Metrics



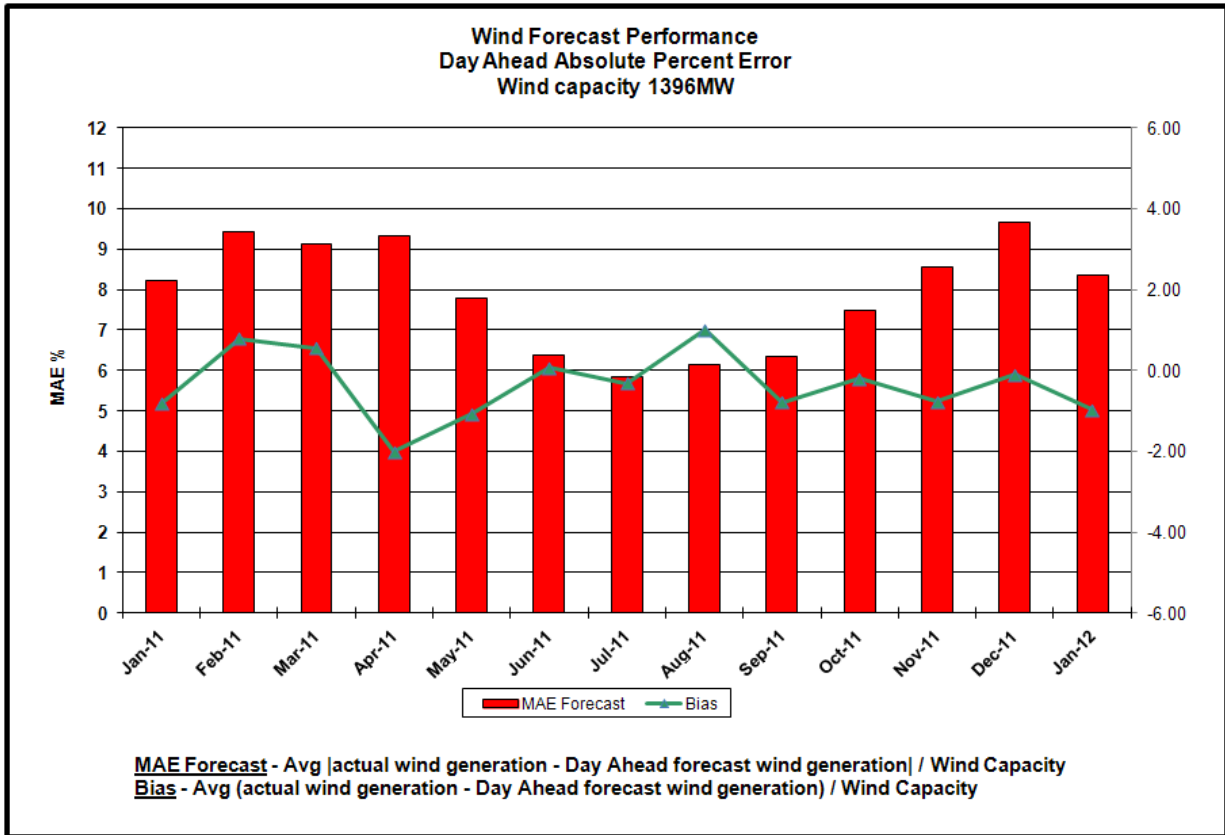


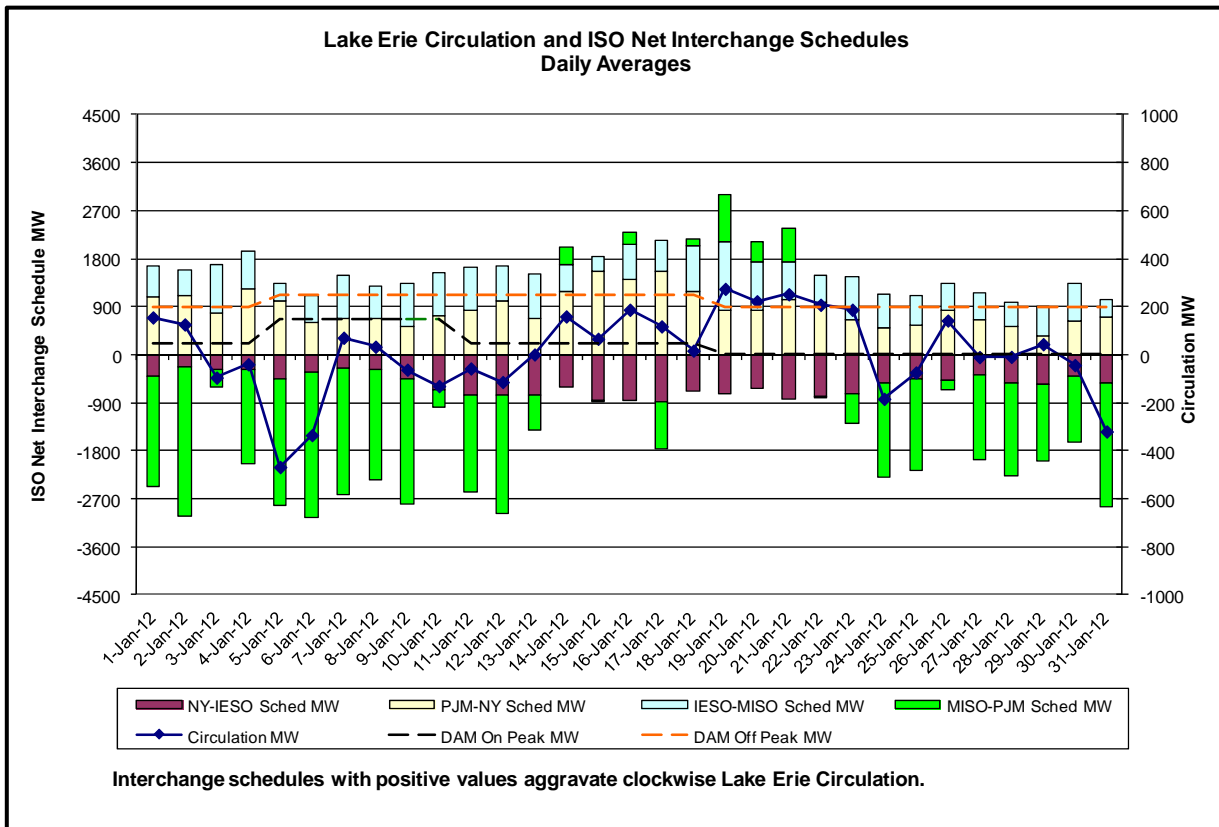
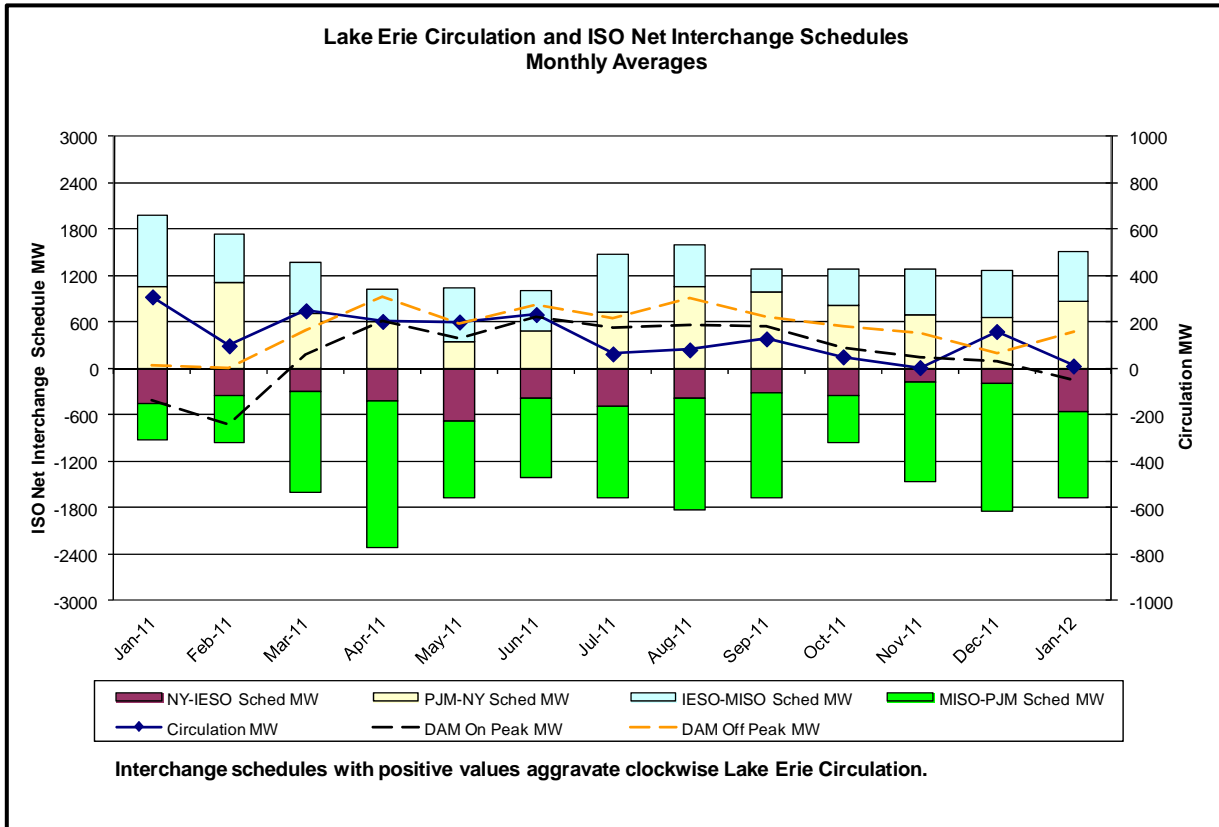




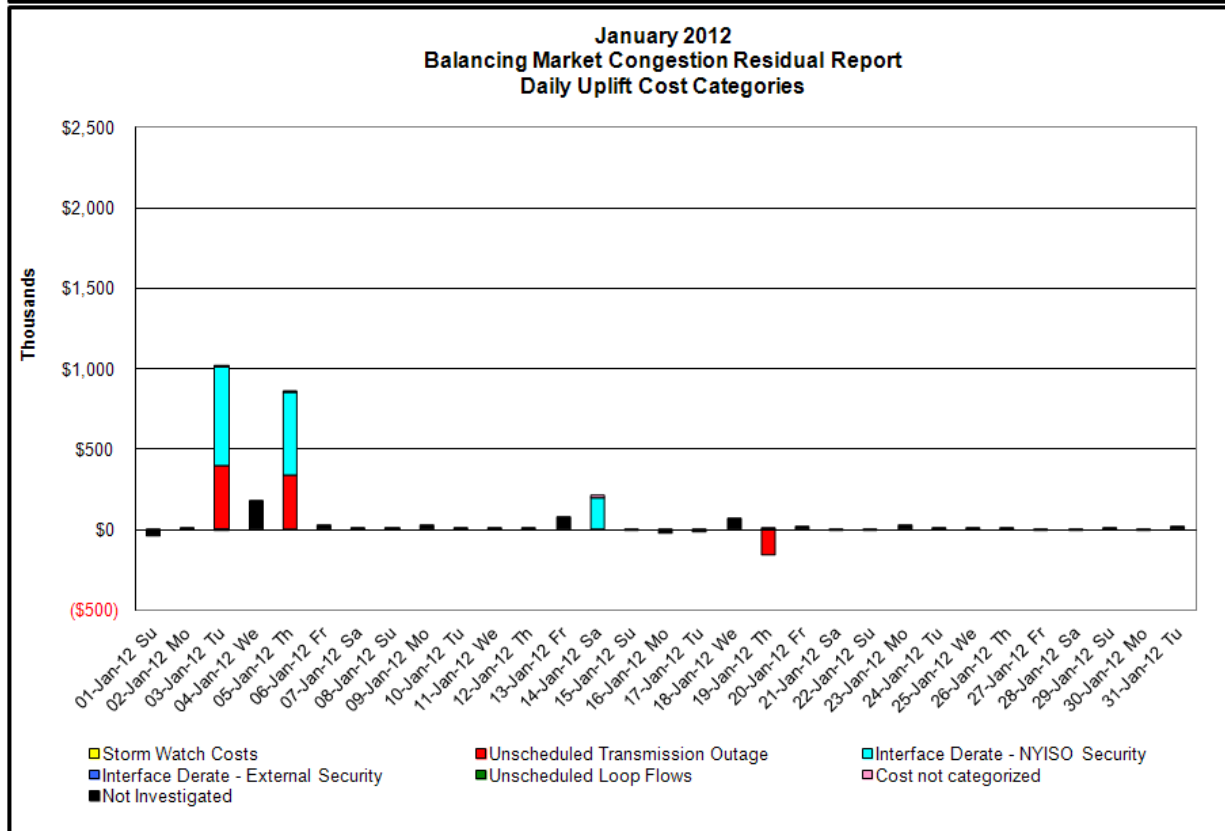
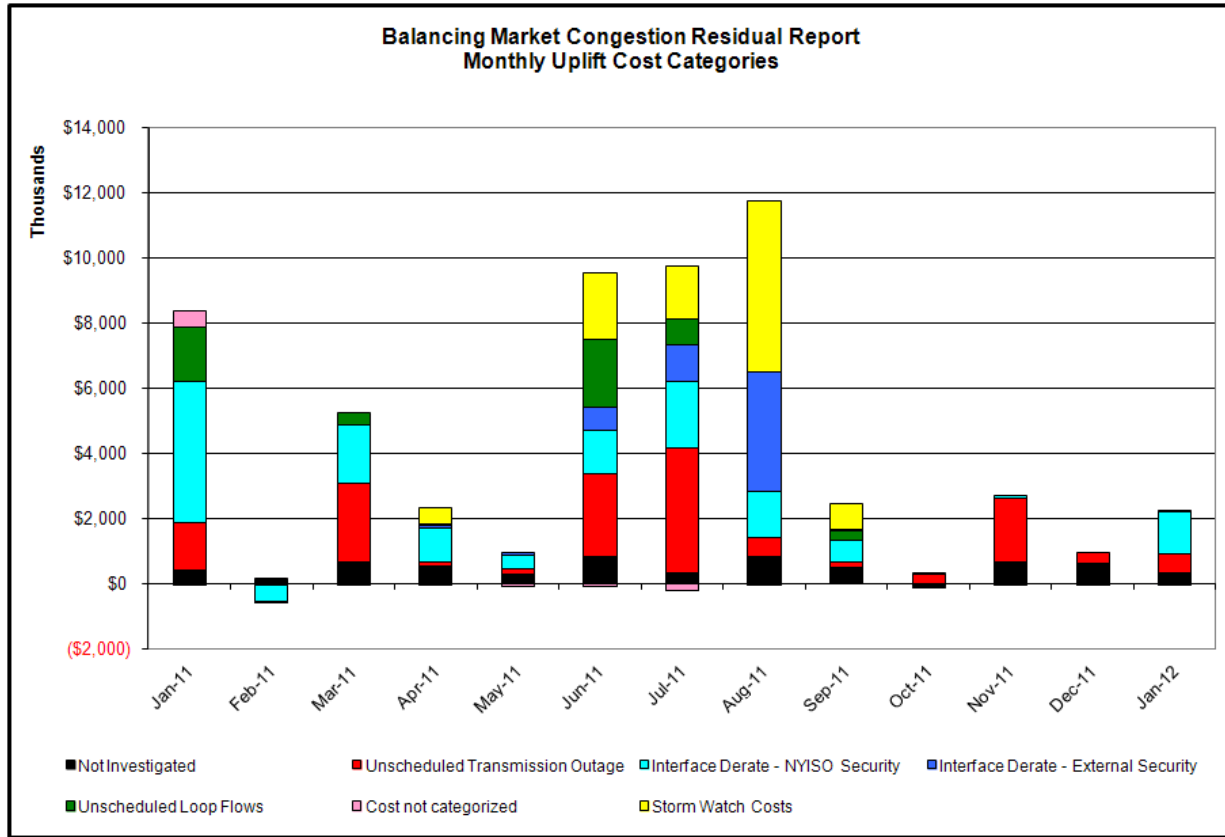








## Market Performance Metrics



Day's investigated in January: 3,5,14,19

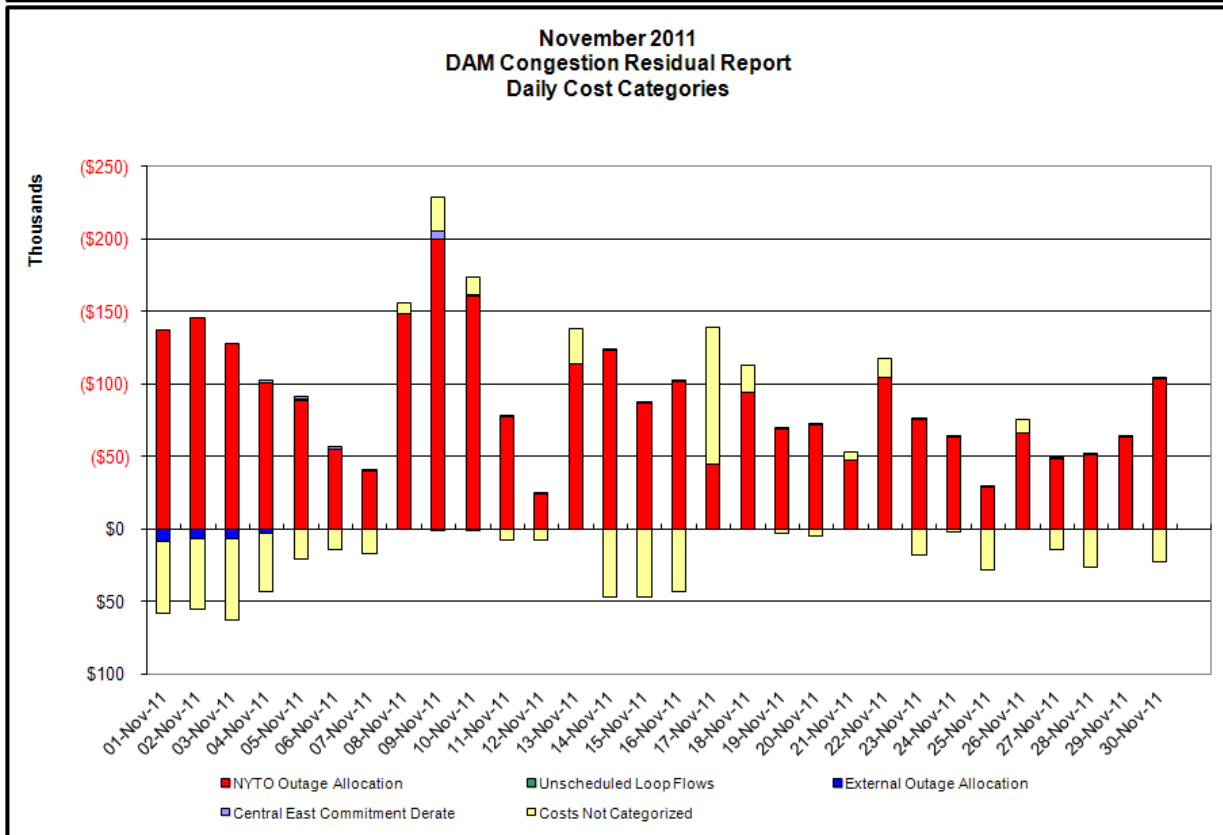
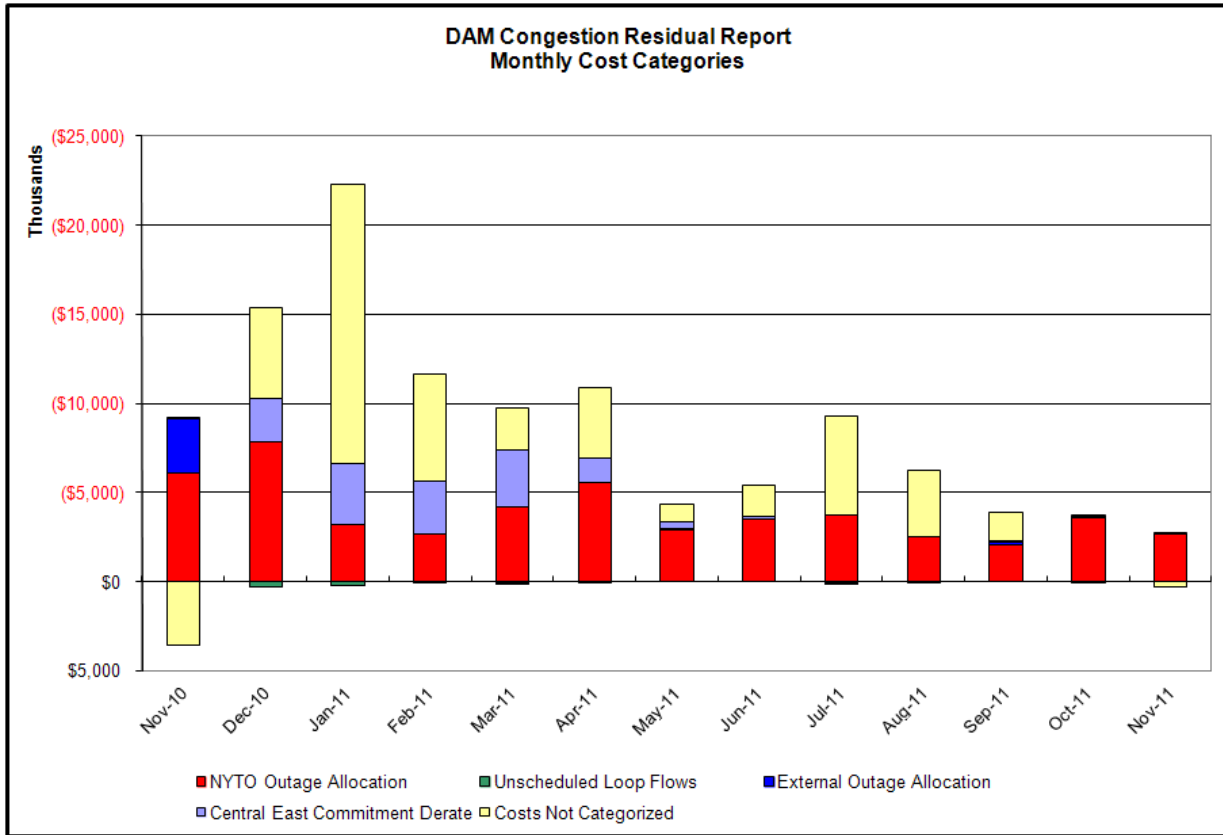
Event	Date (yyyy)	Hours	Description
	1/3/2012	15-16	Forced outage Farragut-Hudson 345kV (#B3402)
	1/3/2012	2,6,7,22,23	NYCA DNI Ramp Limit
	1/3/2012	13,14	Derate Astoria West/Queensbridge/Vernon
	1/3/2012	20	Derate Fox Hills-Willow Brook 138kV (#29212) for I/o Fox Hills-Willow Brook 138kV (#29211)
	1/3/2012	11-15,20,21	Derate GowanusS-Greenwood 138kV (#42232)
	1/3/2012	11-16,18-21	Derate Scriba-Volney 345kV (#21) for I/o Clay-Independence 345kV (#26)
	1/3/2012	18,22	PJM_AC DNI Ramp Limit
	1/3/2012	6	IESO_AC DNI Ramp Limit
	1/5/2012	8-16,22	Forced outage of Farragut PAR (#TR11) tap changer
	1/5/2012	8,22	Derate GowanusS-Greenwood 138kV (#42232)
	1/5/2012	16-20	Derate Greenwood/Staten Island
	1/5/2012	8,20,21	Derate Vernon-Kent Ave. 138kV (#31232) for I/o SCB:Goethals (1N)
	1/5/2012	8,11,12,14-16,20-22	Derate Vernon-Kent Ave. 138kV (#31232) for I/o TWR:Goethals
	1/5/2012	8-21	Derate Scriba-Volney 345kV (#21) for I/o Clay-Independence 345kV (#26)
	1/14/2012	17-21	Derate Greenwood/Staten Island
	1/14/2012	21	Derate GowanusS-Greenwood 138kV (#42232)
	1/14/2012	0	NYCA DNI Ramp Limit
	1/19/2012	6-19	Forced outage of Neptune

### Real-Time Balancing Market Congestion Residual (Uplift Cost) Categories

<u>Category</u>	<u>Cost Assignment</u>	<u>Events Types</u>	<u>Event Examples</u>
Storm Watch	Zone J	Thunderstorm Alert (TSA)	TSA Activations
Unscheduled Transmission Outage	Market-wide	Reduction in DAM to RTM transfers related to unscheduled transmission outage	Forced Line Outage, Unit AVR Outages
Interface Derate - NYISO Security	Market-wide	Reduction in DAM to RTM transfers not related to transmission outage	Interface Derates due to RTM voltages
Interface Derate - External Security	Market-wide	Reduction in DAM to RTM transfers related to External Control Area Security Events	TLR Events, External Transaction Curtailments
Unscheduled Loop Flows	Market-wide	Changes in DAM to RTM unscheduled loop flows impacting NYISO Interface transmission constraints	DAM to RTM Clockwise Lake Erie Loop Flows greater than 125 MW

**Monthly Balancing Market Congestion Report Assumptions/Notes**

- 1) Storm Watch Costs are identified as daily total uplift costs
- 2) At a minimum those days with \$ 100 K/HR, shortfall of \$200 K/Day or more, or surplus of \$ 100 K/Day or more are investigated
- 3) Uplift costs associated with multiple event types are apportioned equally by hour
- 4) Investigations began with Dec 2008. Prior months are reported as Not Investigated.



**Day-Ahead Market Congestion Residual Categories**

<u>Category</u>	<u>Cost Assignment</u>	<u>Events Types</u>	<u>Event Examples</u>
NYTO Outage Allocation	Responsible TO	Direct allocation to NYTO's responsible for transmission equipment status change.	DAM scheduled outage for equipment modeled in-service for the TCC Auction.
Unscheduled Loop Flows	All TO by Monthly Allocation Factor	Residual impact of Lake Erie circulation, MW difference between the DAM and TCC Auction.	Lake Erie Loop Flow Assumptions
External Outage Allocation	All TO by Monthly Allocation Factor	Direct allocation to transmission equipment status change caused by change in status of external equipment.	Tie line required out-of-service by TO of neighboring control area.
Central East Commitment Derate	All TO by Monthly Allocation Factor	Reductions in the DAM Central East_VC limit as compared to the TCC Auction limit, which are not associated with transmission line outages.	

