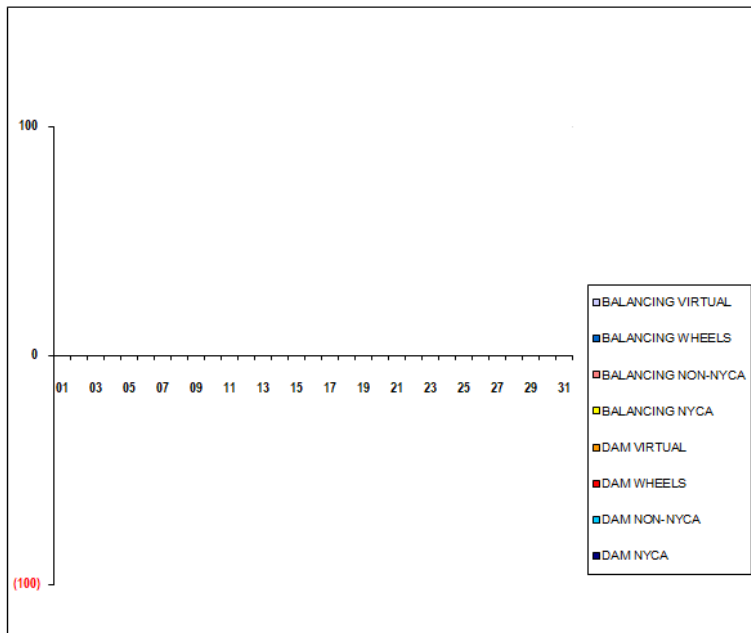


SETTLEMENTS REPORT
 October 2019 Close-Out Settlement
 July 8, 2020

Close-Out Settlement – Market Supply Delta Analysis

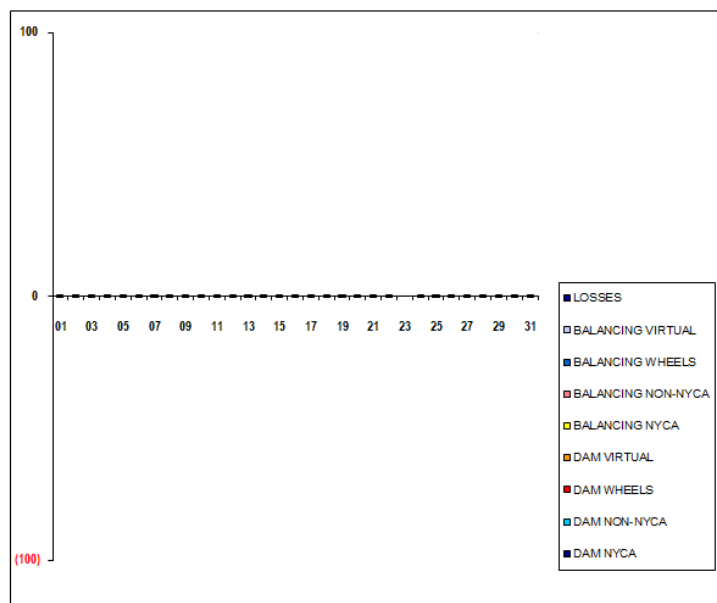
	MONDAY	TUESDAY	WEDNESDAY	THURSDAY	FRIDAY	SATURDAY	SUNDAY
		1	2	3	4	5	6
DAM NYCA		0	0	0	0	0	0
DAM NON-NYCA		0	0	0	0	0	0
DAM WHEELS		0	0	0	0	0	0
DAM VIRTUAL		0	0	0	0	0	0
BALANCING NYCA		0	0	0	0	0	0
BALANCING NON-NYCA		0	0	0	0	0	0
BALANCING WHEELS		0	0	0	0	0	0
BALANCING VIRTUAL		0	0	0	0	0	0
	7	8	9	10	11	12	13
DAM NYCA	0	0	0	0	0	0	0
DAM NON-NYCA	0	0	0	0	0	0	0
DAM WHEELS	0	0	0	0	0	0	0
DAM VIRTUAL	0	0	0	0	0	0	0
BALANCING NYCA	0	0	0	0	0	0	0
BALANCING NON-NYCA	0	0	0	0	0	0	0
BALANCING WHEELS	0	0	0	0	0	0	0
BALANCING VIRTUAL	0	0	0	0	0	0	0
	14	15	16	17	18	19	20
DAM NYCA	0	0	0	0	0	0	0
DAM NON-NYCA	0	0	0	0	0	0	0
DAM WHEELS	0	0	0	0	0	0	0
DAM VIRTUAL	0	0	0	0	0	0	0
BALANCING NYCA	0	0	0	0	0	0	0
BALANCING NON-NYCA	0	0	0	0	0	0	0
BALANCING WHEELS	0	0	0	0	0	0	0
BALANCING VIRTUAL	0	0	0	0	0	0	0
	21	22	23	24	25	26	27
DAM NYCA	0	0	0	0	0	0	0
DAM NON-NYCA	0	0	0	0	0	0	0
DAM WHEELS	0	0	0	0	0	0	0
DAM VIRTUAL	0	0	0	0	0	0	0
BALANCING NYCA	0	0	0	0	0	0	0
BALANCING NON-NYCA	0	0	0	0	0	0	0
BALANCING WHEELS	0	0	0	0	0	0	0
BALANCING VIRTUAL	0	0	0	0	0	0	0
	28	29	30	31			
DAM NYCA	0	0	0	0			
DAM NON-NYCA	0	0	0	0			
DAM WHEELS	0	0	0	0			
DAM VIRTUAL	0	0	0	0			
BALANCING NYCA	0	0	0	0			
BALANCING NON-NYCA	0	0	0	0			
BALANCING WHEELS	0	0	0	0			
BALANCING VIRTUAL	0	0	0	0			



SETTLEMENTS REPORT
 October 2019 Close-Out Settlement
 July 8, 2020

Close-Out Settlement – Market Withdrawals Delta Analysis

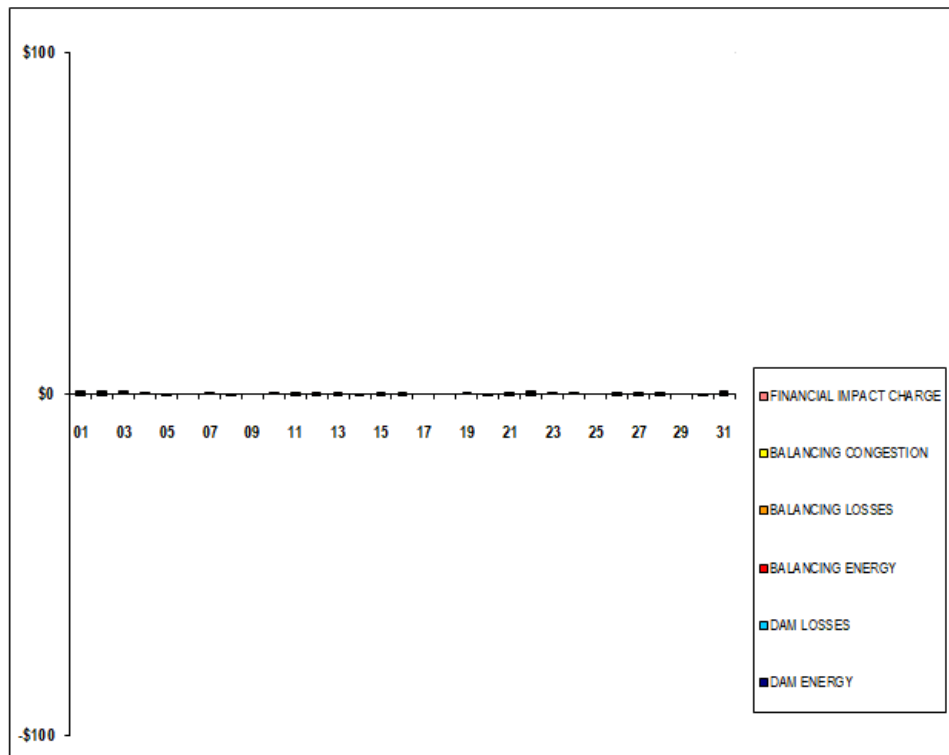
	MONDAY	TUESDAY	WEDNESDAY	THURSDAY	FRIDAY	SATURDAY	SUNDAY
		1	2	3	4	5	6
DAM NYCA		0	0	0	0	0	0
DAM NON-NYCA		0	0	0	0	0	0
DAM WHEELS		0	0	0	0	0	0
DAM VIRTUAL		0	0	0	0	0	0
BALANCING NYCA		0	(0)	0	(0)	(0)	0
BALANCING NON-NYCA		0	0	0	0	0	0
BALANCING WHEELS		0	0	0	0	0	0
BALANCING VIRTUAL		0	0	0	0	0	0
UFE/LOSSES		(0)	0	(0)	0	0	(0)
	7	8	9	10	11	12	13
DAM NYCA	0	0	0	0	0	0	0
DAM NON-NYCA	0	0	0	0	0	0	0
DAM WHEELS	0	0	0	0	0	0	0
DAM VIRTUAL	0	0	0	0	0	0	0
BALANCING NYCA	(0)	0	0	(0)	0	0	(0)
BALANCING NON-NYCA	0	0	0	0	0	0	0
BALANCING WHEELS	0	0	0	0	0	0	0
BALANCING VIRTUAL	0	0	0	0	0	0	0
UFE/LOSSES	0	(0)	(0)	0	(0)	(0)	0
	14	15	16	17	18	19	20
DAM NYCA	0	0	0	0	0	0	0
DAM NON-NYCA	0	0	0	0	0	0	0
DAM WHEELS	0	0	0	0	0	0	0
DAM VIRTUAL	0	0	0	0	0	0	0
BALANCING NYCA	(0)	0	(0)	(0)	0	(0)	0
BALANCING NON-NYCA	0	0	0	0	0	0	0
BALANCING WHEELS	0	0	0	0	0	0	0
BALANCING VIRTUAL	0	0	0	0	0	0	0
UFE/LOSSES	0	(0)	0	0	(0)	0	(0)
	21	22	23	24	25	26	27
DAM NYCA	0	0	0	0	0	0	0
DAM NON-NYCA	0	0	0	0	0	0	0
DAM WHEELS	0	0	0	0	0	0	0
DAM VIRTUAL	0	0	0	0	0	0	0
BALANCING NYCA	0	0	0	0	0	(0)	0
BALANCING NON-NYCA	0	0	0	0	0	0	0
BALANCING WHEELS	0	0	0	0	0	0	0
BALANCING VIRTUAL	0	0	0	0	0	0	0
UFE/LOSSES	(0)	(0)	0	(0)	(0)	0	(0)
	28	29	30	31			
DAM NYCA	0	0	0	0			
DAM NON-NYCA	0	0	0	0			
DAM WHEELS	0	0	0	0			
DAM VIRTUAL	0	0	0	0			
BALANCING NYCA	(0)	0	(0)	(0)			
BALANCING NON-NYCA	0	0	0	0			
BALANCING WHEELS	0	0	0	0			
BALANCING VIRTUAL	0	0	0	0			
UFE/LOSSES	0	(0)	0	0			



SETTLEMENTS REPORT
 October 2019 Close-Out Settlement
 July 8, 2020

Close-Out Settlement – Market Residuals Delta Analysis

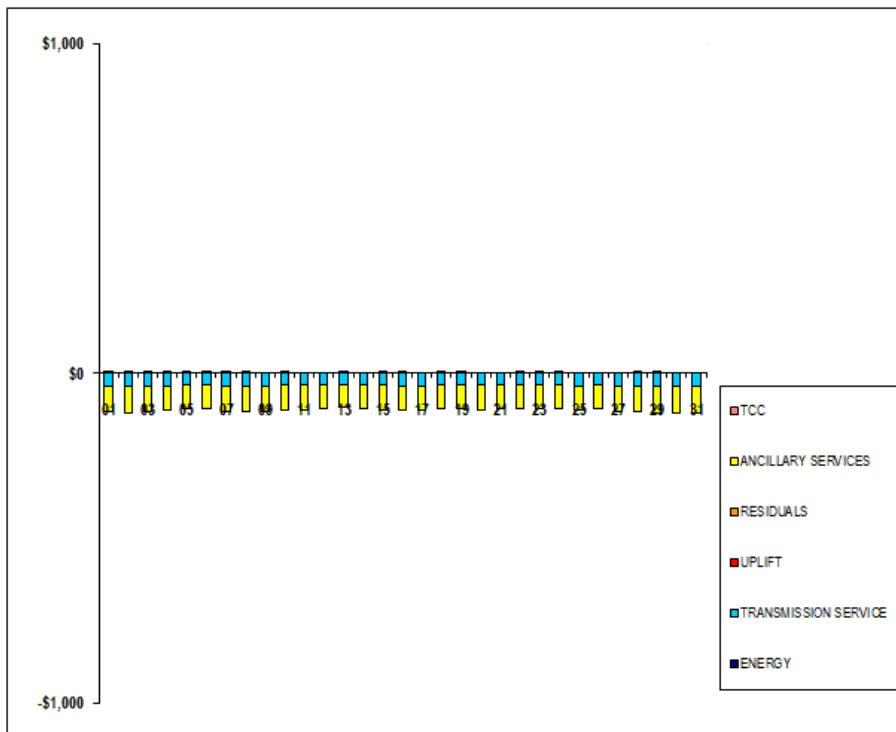
	MONDAY	TUESDAY	WEDNESDAY	THURSDAY	FRIDAY	SATURDAY	SUNDAY
		1	2	3	4	5	6
DAM ENERGY		\$0.01	\$0.00	\$0.00	\$0.00	\$0.00	\$0.00
DAM LOSSES		\$0.00	(\$0.01)	\$0.01	\$0.00	(\$0.01)	\$0.00
BALANCING ENERGY		\$0.01	\$0.00	\$0.00	\$0.00	\$0.00	\$0.00
BALANCING LOSSES		\$0.00	\$0.01	\$0.01	\$0.01	\$0.00	\$0.00
BALANCING CONGESTION		(\$0.01)	\$0.01	\$0.00	\$0.00	(\$0.01)	\$0.00
FINANCIAL IMPACT CHARGE		\$0.00	\$0.00	\$0.00	\$0.00	\$0.00	\$0.00
	7	8	9	10	11	12	13
DAM ENERGY	\$0.00	\$0.00	\$0.00	\$0.00	\$0.00	\$0.00	\$0.00
DAM LOSSES	\$0.00	(\$0.01)	\$0.00	\$0.00	(\$0.01)	(\$0.01)	\$0.00
BALANCING ENERGY	\$0.00	\$0.00	\$0.00	\$0.00	\$0.00	(\$0.01)	\$0.01
BALANCING LOSSES	\$0.01	\$0.00	\$0.00	\$0.01	\$0.00	\$0.00	(\$0.01)
BALANCING CONGESTION	\$0.00	\$0.00	\$0.00	\$0.00	\$0.01	(\$0.01)	\$0.00
FINANCIAL IMPACT CHARGE	\$0.00	\$0.00	\$0.00	\$0.00	\$0.00	\$0.02	\$0.00
	14	15	16	17	18	19	20
DAM ENERGY	\$0.00	\$0.00	\$0.00	\$0.00	\$0.00	\$0.00	(\$0.01)
DAM LOSSES	\$0.00	\$0.01	\$0.00	\$0.00	\$0.00	\$0.01	\$0.00
BALANCING ENERGY	(\$0.01)	\$0.00	\$0.00	\$0.00	\$0.00	\$0.00	(\$0.01)
BALANCING LOSSES	\$0.00	\$0.00	(\$0.01)	\$0.00	\$0.00	\$0.00	\$0.00
BALANCING CONGESTION	\$0.00	\$0.00	\$0.01	\$0.00	\$0.00	\$0.00	\$0.00
FINANCIAL IMPACT CHARGE	\$0.00	(\$0.02)	\$0.00	\$0.00	\$0.00	\$0.00	\$0.00
	21	22	23	24	25	26	27
DAM ENERGY	\$0.01	(\$0.01)	\$0.00	\$0.00	\$0.00	\$0.00	\$0.00
DAM LOSSES	\$0.00	\$0.00	\$0.00	\$0.00	\$0.00	\$0.01	(\$0.01)
BALANCING ENERGY	\$0.00	\$0.01	\$0.00	\$0.00	\$0.00	\$0.00	\$0.01
BALANCING LOSSES	(\$0.01)	\$0.01	\$0.01	\$0.00	\$0.00	\$0.00	(\$0.01)
BALANCING CONGESTION	\$0.00	\$0.00	\$0.00	\$0.01	\$0.00	(\$0.01)	\$0.00
FINANCIAL IMPACT CHARGE	\$0.00	\$0.00	\$0.00	\$0.00	\$0.00	\$0.00	\$0.00
	28	29	30	31			
DAM ENERGY	\$0.01	\$0.00	\$0.00	\$0.01			
DAM LOSSES	(\$0.01)	\$0.00	\$0.00	\$0.00			
BALANCING ENERGY	(\$0.01)	\$0.00	\$0.00	\$0.01			
BALANCING LOSSES	\$0.00	\$0.00	\$0.00	\$0.00			
BALANCING CONGESTION	\$0.00	\$0.00	(\$0.01)	(\$0.01)			
FINANCIAL IMPACT CHARGE	\$0.00	\$0.00	\$0.00	(\$0.01)			



SETTLEMENTS REPORT
 October 2019 Close-Out Settlement
 July 8, 2020

Close-Out Settlement – Market Costs Delta Analysis

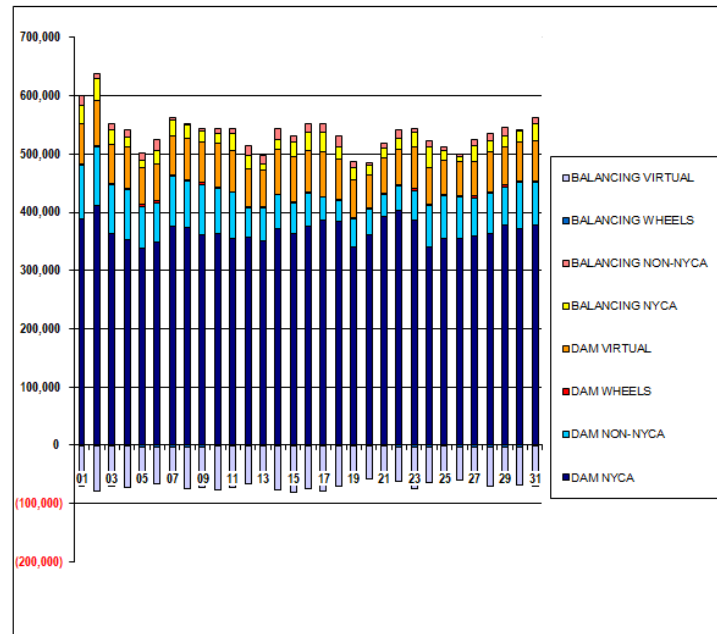
	MONDAY	TUESDAY	WEDNESDAY	THURSDAY	FRIDAY	SATURDAY	SUNDAY
		1	2	3	4	5	6
ENERGY		\$0.38	\$0.00	(\$0.12)	(\$0.13)	\$0.28	(\$0.14)
TRANSMISSION SERVICE		(\$40.54)	(\$42.16)	(\$40.10)	(\$38.38)	(\$37.42)	(\$37.17)
UPLIFT		(\$0.01)	\$0.01	\$0.04	\$0.00	(\$0.01)	\$0.01
RESIDUALS		\$0.01	\$0.01	\$0.02	\$0.01	(\$0.02)	\$0.00
ANCILLARY SERVICES		(\$77.84)	(\$80.95)	(\$76.98)	(\$73.68)	(\$71.83)	(\$71.36)
TCC		\$0.00	\$0.00	\$0.00	\$0.00	\$0.00	\$0.00
	7	8	9	10	11	12	13
ENERGY	\$0.17	\$0.04	(\$0.01)	\$0.42	(\$0.01)	(\$0.06)	\$0.29
TRANSMISSION SERVICE	(\$40.31)	(\$40.89)	(\$39.85)	(\$38.31)	(\$37.91)	(\$37.08)	(\$35.12)
UPLIFT	\$0.00	(\$0.01)	\$0.00	(\$0.01)	\$0.00	\$0.00	\$0.00
RESIDUALS	\$0.01	(\$0.01)	\$0.00	\$0.01	\$0.00	(\$0.01)	\$0.00
ANCILLARY SERVICES	(\$77.39)	(\$78.48)	(\$76.51)	(\$73.57)	(\$72.78)	(\$71.18)	(\$67.40)
TCC	\$0.00	\$0.00	\$0.00	\$0.00	\$0.00	\$0.00	\$0.00
	14	15	16	17	18	19	20
ENERGY	(\$0.15)	(\$0.02)	\$0.24	(\$0.04)	\$0.09	\$0.08	(\$0.11)
TRANSMISSION SERVICE	(\$37.78)	(\$38.03)	(\$39.12)	(\$38.57)	(\$37.32)	(\$36.62)	(\$38.06)
UPLIFT	(\$0.01)	\$0.01	\$0.00	\$0.00	\$0.01	\$0.01	(\$0.01)
RESIDUALS	(\$0.01)	(\$0.01)	\$0.00	\$0.00	\$0.00	\$0.01	(\$0.02)
ANCILLARY SERVICES	(\$72.52)	(\$73.02)	(\$75.12)	(\$74.07)	(\$71.63)	(\$70.31)	(\$73.07)
TCC	\$0.00	\$0.00	\$0.00	\$0.00	\$0.00	\$0.00	\$0.00
	21	22	23	24	25	26	27
ENERGY	\$0.00	\$0.18	\$0.19	\$0.17	(\$0.01)	(\$0.22)	(\$0.16)
TRANSMISSION SERVICE	(\$36.54)	(\$36.90)	(\$36.38)	(\$37.71)	(\$39.26)	(\$37.31)	(\$39.80)
UPLIFT	(\$0.01)	\$0.01	\$0.00	\$0.00	\$0.00	\$0.00	\$0.00
RESIDUALS	\$0.00	\$0.01	\$0.01	\$0.01	\$0.00	\$0.00	(\$0.01)
ANCILLARY SERVICES	(\$70.13)	(\$70.86)	(\$69.83)	(\$72.38)	(\$75.38)	(\$71.62)	(\$76.39)
TCC	\$0.00	\$0.00	\$0.00	\$0.00	\$0.00	\$0.00	\$0.00
	28	29	30	31			
ENERGY	\$0.34	\$0.27	\$0.00	(\$0.19)			
TRANSMISSION SERVICE	(\$40.63)	(\$42.29)	(\$41.88)	(\$42.18)			
UPLIFT	\$0.00	\$0.02	\$0.00	(\$0.04)			
RESIDUALS	(\$0.01)	\$0.00	(\$0.01)	\$0.00			
ANCILLARY SERVICES	(\$78.02)	(\$81.20)	(\$80.38)	(\$80.98)			
TCC	\$0.00	\$0.00	\$0.00	\$0.00			



SETTLEMENTS REPORT
 October 2019 Close-Out Settlement
 July 8, 2020

4-Month Settlement Adjustment – Market Supply Analysis

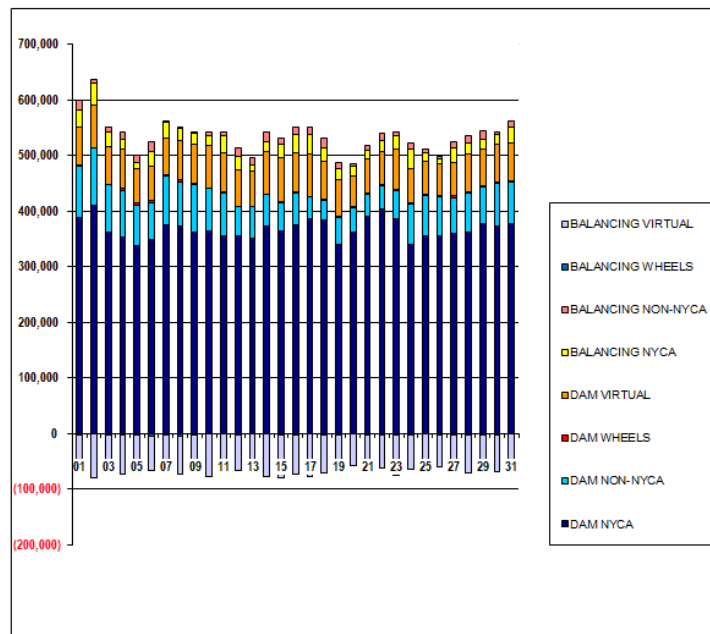
	MONDAY	TUESDAY	WEDNESDAY	THURSDAY	FRIDAY	SATURDAY	SUNDAY
		1	2	3	4	5	6
DAM NYCA		388,226	411,874	362,986	353,503	336,232	348,593
DAM NON-NYCA		92,984	101,279	84,604	84,796	72,403	67,607
DAM WHEELS		2,401	1,340	1,581	3,343	4,038	3,743
DAM VIRTUAL		68,083	77,450	67,979	69,683	62,380	62,301
BALANCING NYCA		31,167	38,274	25,358	17,482	11,325	24,582
BALANCING NON-NYCA		16,606	8,121	8,796	13,451	12,837	17,651
BALANCING WHEELS		(1,908)	(940)	(1,331)	(1,993)	(3,388)	(3,743)
BALANCING VIRTUAL		(68,083)	(77,450)	(67,979)	(69,683)	(62,380)	(62,301)
	7	8	9	10	11	12	13
DAM NYCA	375,674	373,422	362,249	364,050	355,625	356,450	351,295
DAM NON-NYCA	86,924	79,796	85,072	77,627	78,128	51,224	56,381
DAM WHEELS	2,486	3,572	3,738	852	940	1,366	1,112
DAM VIRTUAL	66,662	70,130	69,441	75,269	71,156	65,187	63,465
BALANCING NYCA	27,520	22,307	19,209	17,256	30,264	23,817	11,452
BALANCING NON-NYCA	3,610	662	3,563	8,389	7,148	15,409	13,242
BALANCING WHEELS	(2,486)	(3,572)	(3,038)	(852)	(940)	(1,366)	(1,112)
BALANCING VIRTUAL	(66,662)	(70,130)	(69,441)	(75,269)	(71,156)	(65,187)	(63,465)
	14	15	16	17	18	19	20
DAM NYCA	372,938	363,699	376,012	385,792	385,438	339,970	362,385
DAM NON-NYCA	57,109	52,144	56,680	40,023	35,207	48,397	44,028
DAM WHEELS	635	1,330	2,050	512	1,411	1,786	1,230
DAM VIRTUAL	76,657	78,561	71,495	77,515	68,588	66,614	55,552
BALANCING NYCA	18,287	25,276	32,209	33,493	22,700	20,168	17,498
BALANCING NON-NYCA	17,380	10,788	12,899	14,248	18,058	11,032	4,436
BALANCING WHEELS	(191)	(1,330)	(2,050)	(512)	(1,411)	(1,786)	(1,230)
BALANCING VIRTUAL	(76,657)	(78,561)	(71,495)	(77,515)	(68,588)	(66,614)	(55,552)
	21	22	23	24	25	26	27
DAM NYCA	392,157	403,700	386,991	339,757	355,649	355,127	360,000
DAM NON-NYCA	39,053	41,345	50,387	72,392	71,951	70,606	64,831
DAM WHEELS	1,869	2,397	2,915	2,455	2,848	2,745	2,680
DAM VIRTUAL	60,973	60,010	71,504	62,257	59,115	57,791	59,864
BALANCING NYCA	15,829	19,124	24,692	35,663	16,369	8,473	27,829
BALANCING NON-NYCA	7,508	14,399	6,357	10,295	6,658	4,578	9,484
BALANCING WHEELS	(1,869)	(2,397)	(2,915)	(2,335)	(515)	(2,195)	(2,680)
BALANCING VIRTUAL	(60,973)	(60,010)	(71,504)	(62,257)	(59,115)	(57,791)	(59,864)
	28	29	30	31			
DAM NYCA	362,636	377,887	372,909	377,309			
DAM NON-NYCA	69,627	65,675	78,199	74,767			
DAM WHEELS	2,634	3,048	2,423	2,530			
DAM VIRTUAL	68,199	65,731	66,425	69,010			
BALANCING NYCA	19,879	18,266	19,390	28,865			
BALANCING NON-NYCA	12,597	15,396	2,596	10,390			
BALANCING WHEELS	(2,204)	(2,423)	(2,423)	(800)			
BALANCING VIRTUAL	(68,199)	(65,731)	(66,425)	(69,010)			



SETTLEMENTS REPORT
 October 2019 Close-Out Settlement
 July 8, 2020

Close-Out Settlement – Market Supply Analysis

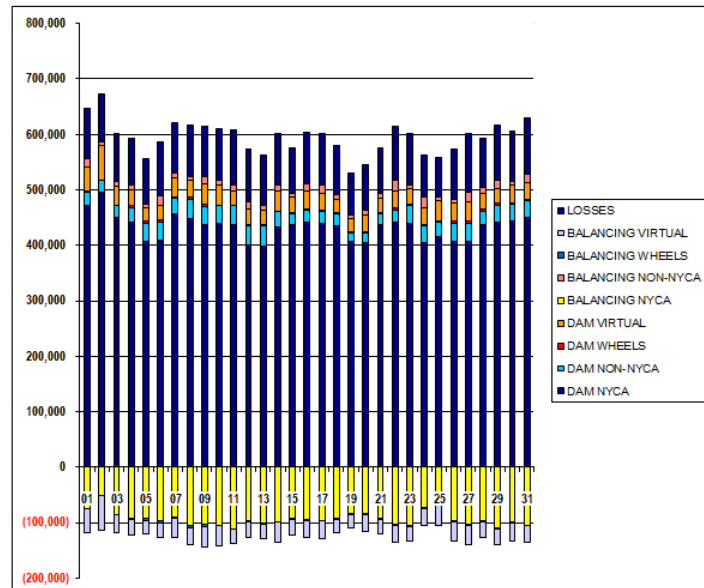
	MONDAY	TUESDAY	WEDNESDAY	THURSDAY	FRIDAY	SATURDAY	SUNDAY
		1	2	3	4	5	6
DAM NYCA		388,226	411,874	362,886	353,503	338,232	348,593
DAM NON-NYCA		92,984	101,279	84,604	84,796	72,403	67,607
DAM WHEELS		2,401	1,340	1,581	3,343	4,038	3,743
DAM VIRTUAL		68,083	77,450	67,979	69,683	62,380	62,301
BALANCING NYCA		31,167	38,274	25,358	17,482	11,325	24,582
BALANCING NON-NYCA		16,606	8,121	8,796	13,451	12,837	17,651
BALANCING WHEELS		(1,906)	(940)	(1,331)	(1,993)	(3,388)	(3,743)
BALANCING VIRTUAL		(68,083)	(77,450)	(67,979)	(69,683)	(62,380)	(62,301)
	7	8	9	10	11	12	13
DAM NYCA	375,674	373,422	362,249	364,050	355,625	356,450	351,295
DAM NON-NYCA	86,924	79,796	85,072	77,627	78,128	51,224	56,381
DAM WHEELS	2,486	3,572	3,738	852	940	1,368	1,112
DAM VIRTUAL	66,662	70,130	69,441	75,269	71,158	65,187	63,465
BALANCING NYCA	27,520	22,307	19,209	17,256	30,264	23,817	11,452
BALANCING NON-NYCA	3,610	662	3,563	8,389	7,148	15,409	13,242
BALANCING WHEELS	(2,486)	(3,572)	(3,038)	(852)	(940)	(1,368)	(1,112)
BALANCING VIRTUAL	(66,662)	(70,130)	(69,441)	(75,269)	(71,156)	(65,187)	(63,465)
	14	15	16	17	18	19	20
DAM NYCA	372,938	363,699	376,012	385,792	385,438	339,970	362,385
DAM NON-NYCA	57,109	52,144	56,680	40,023	35,207	48,397	44,028
DAM WHEELS	635	1,330	2,050	512	1,411	1,786	1,230
DAM VIRTUAL	76,657	78,561	71,495	77,515	68,588	66,614	55,552
BALANCING NYCA	18,287	25,276	32,209	33,493	22,700	20,168	17,498
BALANCING NON-NYCA	17,380	10,788	12,899	14,248	18,058	11,032	4,436
BALANCING WHEELS	(191)	(1,330)	(2,050)	(512)	(1,411)	(1,786)	(1,230)
BALANCING VIRTUAL	(76,657)	(78,561)	(71,495)	(77,515)	(68,588)	(66,614)	(55,552)
	21	22	23	24	25	26	27
DAM NYCA	392,157	403,700	386,991	339,757	355,649	355,127	360,000
DAM NON-NYCA	39,053	41,345	50,387	72,392	71,951	70,606	64,831
DAM WHEELS	1,869	2,397	2,915	2,455	2,848	2,745	2,680
DAM VIRTUAL	60,973	60,010	71,504	62,257	59,115	57,791	59,864
BALANCING NYCA	15,829	19,124	24,692	35,663	16,369	8,473	27,829
BALANCING NON-NYCA	7,906	14,399	6,357	10,295	6,658	4,578	9,464
BALANCING WHEELS	(1,869)	(2,397)	(2,915)	(2,335)	(515)	(2,195)	(2,680)
BALANCING VIRTUAL	(60,973)	(60,010)	(71,504)	(62,257)	(59,115)	(57,791)	(59,864)
	28	29	30	31			
DAM NYCA	362,636	377,887	372,909	377,309			
DAM NON-NYCA	69,627	65,675	78,199	74,767			
DAM WHEELS	2,634	3,048	2,423	2,530			
DAM VIRTUAL	68,199	65,731	66,425	69,010			
BALANCING NYCA	19,879	18,266	19,390	28,865			
BALANCING NON-NYCA	12,597	15,396	2,596	10,390			
BALANCING WHEELS	(2,204)	(2,423)	(2,423)	(880)			
BALANCING VIRTUAL	(68,199)	(65,731)	(66,425)	(69,010)			



SETTLEMENTS REPORT
 October 2019 Close-Out Settlement
 July 8, 2020

4-Month Settlement Adjustment – Market Withdrawals Analysis

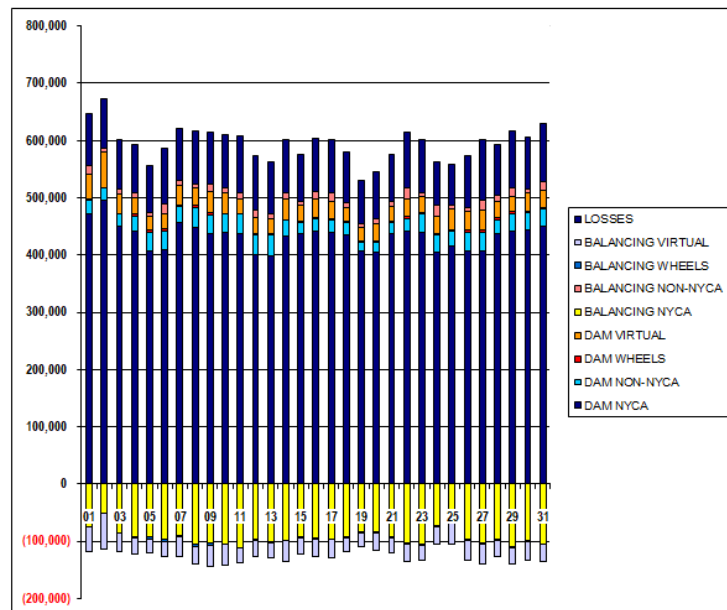
	MONDAY	TUESDAY	WEDNESDAY	THURSDAY	FRIDAY	SATURDAY	SUNDAY
		1	2	3	4	5	6
DAM NYCA		472,544	495,454	450,337	440,717	407,265	410,034
DAM NON-NYCA		23,386	21,441	20,941	26,765	32,173	32,087
DAM WHEELS		2,401	1,340	1,581	3,343	4,038	3,743
DAM VIRTUAL		42,110	60,879	32,823	28,853	24,106	26,333
BALANCING NYCA		(74,009)	(51,056)	(85,123)	(92,282)	(92,505)	(97,358)
BALANCING NON-NYCA		15,596	7,235	8,300	8,017	5,473	16,542
BALANCING WHEELS		(1,906)	(940)	(1,331)	(1,953)	(3,388)	(3,743)
BALANCING VIRTUAL		(42,110)	(60,879)	(32,823)	(28,853)	(24,106)	(26,333)
UFE/LOSSES		91,485	86,474	87,296	86,014	82,392	97,127
	7	8	9	10	11	12	13
DAM NYCA	457,041	447,869	436,380	438,459	437,845	400,872	399,030
DAM NON-NYCA	26,785	35,501	33,000	32,973	32,950	35,125	36,517
DAM WHEELS	2,486	3,572	3,738	852	940	1,366	1,112
DAM VIRTUAL	35,133	30,031	37,920	36,315	25,283	27,953	27,174
BALANCING NYCA	(89,381)	(106,283)	(103,571)	(105,466)	(110,787)	(96,952)	(101,153)
BALANCING NON-NYCA	8,396	6,087	11,789	8,684	11,944	12,228	7,445
BALANCING WHEELS	(2,486)	(3,572)	(3,038)	(852)	(940)	(1,366)	(1,112)
BALANCING VIRTUAL	(35,133)	(30,031)	(37,920)	(36,315)	(25,283)	(27,953)	(27,174)
UFE/LOSSES	90,887	93,014	92,495	92,672	99,213	95,627	90,530
	14	15	16	17	18	19	20
DAM NYCA	433,294	436,612	441,700	439,295	435,127	406,344	403,904
DAM NON-NYCA	27,972	19,897	21,947	22,637	21,914	15,746	18,166
DAM WHEELS	635	1,330	2,050	512	1,411	1,786	1,230
DAM VIRTUAL	36,486	29,297	31,146	31,895	23,496	25,067	31,959
BALANCING NYCA	(98,135)	(92,897)	(93,483)	(96,307)	(92,533)	(83,683)	(83,803)
BALANCING NON-NYCA	9,493	5,906	14,644	13,343	9,073	5,089	8,606
BALANCING WHEELS	(191)	(1,330)	(2,050)	(512)	(1,411)	(1,786)	(1,230)
BALANCING VIRTUAL	(36,486)	(29,297)	(31,146)	(31,895)	(23,496)	(25,067)	(31,959)
UFE/LOSSES	93,091	82,389	92,992	94,587	87,822	76,073	81,475
	21	22	23	24	25	26	27
DAM NYCA	436,921	442,567	438,991	405,103	416,142	406,705	407,853
DAM NON-NYCA	20,037	21,510	32,821	30,345	25,125	33,483	32,590
DAM WHEELS	1,869	2,397	2,915	2,455	2,848	2,745	2,680
DAM VIRTUAL	26,340	31,595	26,570	30,102	36,035	34,112	34,493
BALANCING NYCA	(92,784)	(102,404)	(104,400)	(72,331)	(68,271)	(67,349)	(102,939)
BALANCING NON-NYCA	7,745	19,518	7,102	18,666	5,971	5,977	19,023
BALANCING WHEELS	(1,869)	(2,397)	(2,915)	(2,335)	(515)	(2,195)	(2,680)
BALANCING VIRTUAL	(26,340)	(31,595)	(26,570)	(30,102)	(36,035)	(34,112)	(34,493)
UFE/LOSSES	83,028	97,376	93,913	76,324	71,660	89,968	105,585
	28	29	30	31			
DAM NYCA	436,354	441,917	443,137	450,427			
DAM NON-NYCA	25,363	30,254	31,521	29,730			
DAM WHEELS	2,634	3,048	2,423	2,530			
DAM VIRTUAL	29,596	27,122	32,302	30,198			
BALANCING NYCA	(98,009)	(109,609)	(98,761)	(105,054)			
BALANCING NON-NYCA	10,801	13,992	5,378	14,654			
BALANCING WHEELS	(2,204)	(2,423)	(2,423)	(880)			
BALANCING VIRTUAL	(29,596)	(27,122)	(32,302)	(30,198)			
UFE/LOSSES	88,230	100,671	91,820	101,574			



SETTLEMENTS REPORT
 October 2019 Close-Out Settlement
 July 8, 2020

Close-Out Settlement – Market Withdrawals Analysis

	MONDAY	TUESDAY	WEDNESDAY	THURSDAY	FRIDAY	SATURDAY	SUNDAY
		1	2	3	4	5	6
DAM NYCA		472,544	495,454	450,337	440,717	407,265	410,034
DAM NON-NYCA		23,386	21,441	20,941	26,765	32,173	32,087
DAM WHEELS		2,401	1,340	1,581	3,343	4,038	3,743
DAM VIRTUAL		42,110	60,879	32,823	28,853	24,106	26,333
BALANCING NYCA		(74,009)	(51,056)	(85,123)	(92,282)	(92,505)	(97,358)
BALANCING NON-NYCA		15,596	7,235	8,300	8,017	5,473	16,542
BALANCING WHEELS		(1,906)	(940)	(1,331)	(1,993)	(3,388)	(3,743)
BALANCING VIRTUAL		(42,110)	(60,879)	(32,823)	(28,853)	(24,106)	(26,333)
UFE/LOSSES		91,465	86,474	87,296	86,014	82,392	97,127
	7	8	9	10	11	12	13
DAM NYCA	457,041	447,869	436,380	438,459	437,845	400,872	399,030
DAM NON-NYCA	26,785	35,501	33,000	32,973	32,950	35,125	36,517
DAM WHEELS	2,486	3,572	3,738	852	940	1,366	1,112
DAM VIRTUAL	35,133	30,031	37,920	36,315	25,283	27,953	27,174
BALANCING NYCA	(89,381)	(106,263)	(103,571)	(105,466)	(110,787)	(96,952)	(101,153)
BALANCING NON-NYCA	8,396	6,087	11,789	8,684	11,944	12,228	7,445
BALANCING WHEELS	(2,486)	(3,572)	(3,038)	(852)	(940)	(1,366)	(1,112)
BALANCING VIRTUAL	(35,133)	(30,031)	(37,920)	(36,315)	(25,283)	(27,953)	(27,174)
UFE/LOSSES	90,887	93,014	92,495	92,672	99,213	95,627	90,530
	14	15	16	17	18	19	20
DAM NYCA	433,294	436,612	441,700	439,295	435,127	406,344	403,904
DAM NON-NYCA	27,972	19,897	21,947	22,637	21,914	15,746	18,166
DAM WHEELS	635	1,330	2,050	512	1,411	1,786	1,230
DAM VIRTUAL	36,486	26,297	31,146	31,895	23,496	25,087	31,959
BALANCING NYCA	(98,135)	(92,897)	(93,483)	(96,307)	(92,533)	(83,683)	(83,803)
BALANCING NON-NYCA	9,493	5,906	14,644	13,343	9,073	5,089	8,606
BALANCING WHEELS	(191)	(1,330)	(2,050)	(512)	(1,411)	(1,786)	(1,230)
BALANCING VIRTUAL	(36,486)	(29,297)	(31,146)	(31,895)	(23,496)	(25,087)	(31,959)
UFE/LOSSES	93,091	82,389	92,992	94,587	87,822	76,073	81,475
	21	22	23	24	25	26	27
DAM NYCA	436,921	442,567	438,991	405,103	416,142	406,705	407,853
DAM NON-NYCA	20,037	21,510	32,821	30,345	25,125	33,483	32,590
DAM WHEELS	1,869	2,397	2,915	2,455	2,848	2,745	2,680
DAM VIRTUAL	26,340	31,595	26,570	30,102	36,035	34,112	34,493
BALANCING NYCA	(92,784)	(102,403)	(104,400)	(72,331)	(68,271)	(97,349)	(102,928)
BALANCING NON-NYCA	7,745	19,518	7,102	18,666	5,971	5,977	19,023
BALANCING WHEELS	(1,869)	(2,397)	(2,915)	(2,335)	(515)	(2,195)	(2,680)
BALANCING VIRTUAL	(26,340)	(31,595)	(26,570)	(30,102)	(36,035)	(34,112)	(34,493)
UFE/LOSSES	83,028	97,376	93,913	76,324	71,660	89,968	105,585
	28	29	30	31			
DAM NYCA	436,354	441,917	443,137	450,427			
DAM NON-NYCA	25,363	30,254	31,521	29,730			
DAM WHEELS	2,834	3,046	2,423	2,530			
DAM VIRTUAL	29,596	27,122	32,302	30,198			
BALANCING NYCA	(96,009)	(109,609)	(98,761)	(105,054)			
BALANCING NON-NYCA	10,801	13,982	5,378	14,654			
BALANCING WHEELS	(2,204)	(2,423)	(2,423)	(880)			
BALANCING VIRTUAL	(29,596)	(27,122)	(32,302)	(30,198)			
UFE/LOSSES	88,230	100,871	91,820	101,574			



SETTLEMENTS REPORT
 October 2019 Close-Out Settlement
 July 8, 2020

4-Month Settlement Adjustment – Market Residuals Analysis

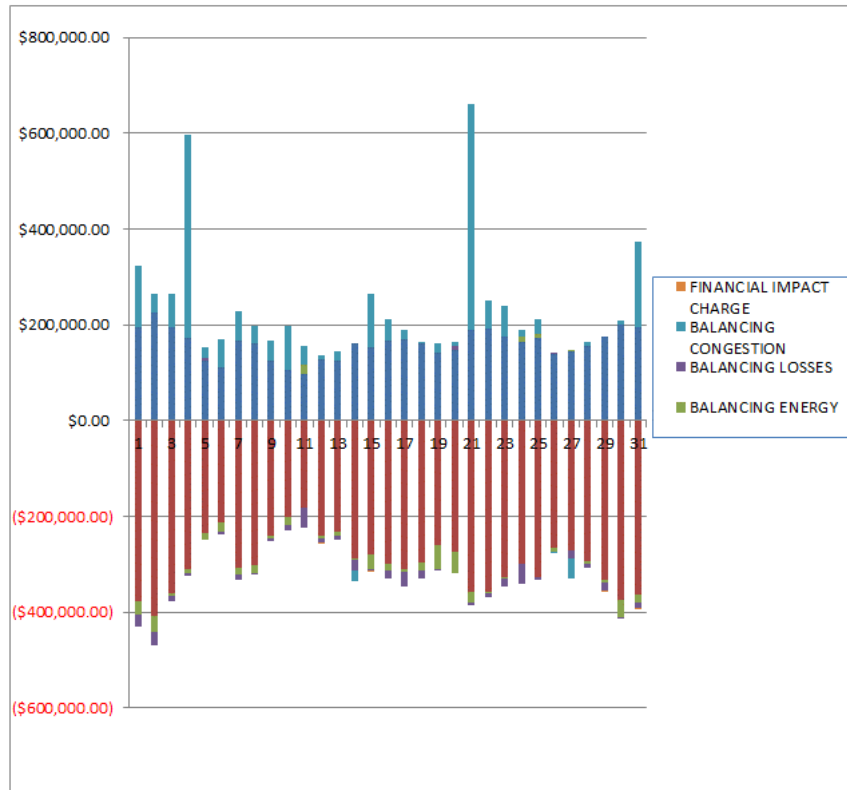
	MONDAY	TUESDAY	WEDNESDAY	THURSDAY	FRIDAY	SATURDAY	SUNDAY
		1	2	3	4	5	6
DAM ENERGY		\$194,044.57	\$224,923.81	\$194,147.78	\$174,083.66	\$125,247.14	\$111,220.65
DAM LOSSES		(\$377,134.70)	(\$406,722.30)	(\$361,489.64)	(\$310,542.74)	(\$235,557.83)	(\$211,874.40)
BALANCING ENERGY		(\$28,962.71)	(\$34,963.57)	(\$5,150.50)	(\$8,399.50)	(\$13,192.27)	(\$20,402.23)
BALANCING LOSSES		(\$22,633.89)	(\$27,157.54)	(\$9,557.01)	(\$5,239.12)	\$6,685.02	(\$4,100.70)
BALANCING CONGESTION		\$129,690.74	\$40,950.40	\$69,913.33	\$423,737.09	\$20,634.09	\$58,040.62
FINANCIAL IMPACT CHARGE		\$0.00	\$0.00	\$0.00	\$0.00	\$0.00	\$0.00
	7	8	9	10	11	12	13
DAM ENERGY	\$166,347.28	\$161,086.05	\$125,099.16	\$107,164.90	\$96,944.61	\$128,890.21	\$125,925.58
DAM LOSSES	(\$307,346.32)	(\$302,715.45)	(\$241,355.80)	(\$202,021.47)	(\$180,417.64)	(\$241,313.65)	(\$232,193.67)
BALANCING ENERGY	(\$13,886.58)	(\$15,952.83)	(\$5,243.90)	(\$16,729.03)	\$10,942.82	(\$3,625.28)	(\$8,613.62)
BALANCING LOSSES	(\$11,385.54)	(\$1,388.55)	(\$3,986.28)	(\$8,928.59)	(\$44,044.02)	(\$8,972.16)	(\$7,538.59)
BALANCING CONGESTION	\$61,523.32	\$37,950.95	\$40,798.66	\$91,930.48	\$41,411.04	\$8,307.55	\$19,346.65
FINANCIAL IMPACT CHARGE	\$0.00	\$0.00	\$0.00	\$0.00	\$0.00	(\$710.49)	\$0.00
	14	15	16	17	18	19	20
DAM ENERGY	\$160,600.42	\$152,509.39	\$167,477.03	\$170,996.16	\$160,507.49	\$141,592.79	\$148,060.54
DAM LOSSES	(\$288,777.89)	(\$279,191.81)	(\$299,749.87)	(\$310,923.76)	(\$297,011.66)	(\$258,386.44)	(\$273,915.58)
BALANCING ENERGY	(\$2,946.87)	(\$29,650.55)	(\$13,245.09)	(\$3,972.44)	(\$16,704.22)	(\$50,998.13)	(\$43,722.44)
BALANCING LOSSES	(\$19,715.13)	(\$5,325.09)	(\$16,364.71)	(\$30,748.15)	(\$14,779.18)	(\$1,588.10)	\$6,825.49
BALANCING CONGESTION	(\$22,586.86)	\$111,344.14	\$45,487.17	\$18,131.88	\$3,126.47	\$19,345.10	\$8,233.56
FINANCIAL IMPACT CHARGE	\$0.00	(\$48.51)	\$0.00	\$0.00	\$0.00	\$0.00	\$0.00
	21	22	23	24	25	26	27
DAM ENERGY	\$189,359.71	\$191,469.67	\$174,824.64	\$163,405.74	\$174,012.56	\$138,703.06	\$144,419.32
DAM LOSSES	(\$358,322.55)	(\$356,390.28)	(\$327,950.74)	(\$299,836.74)	(\$326,616.11)	(\$265,161.87)	(\$271,741.24)
BALANCING ENERGY	(\$20,121.35)	(\$4,736.86)	(\$2,212.61)	\$11,262.00	\$5,830.82	(\$8,548.43)	\$2,021.26
BALANCING LOSSES	(\$6,418.21)	(\$8,015.10)	(\$14,781.41)	(\$41,128.56)	(\$6,285.99)	\$2,436.88	(\$17,186.09)
BALANCING CONGESTION	\$472,176.97	\$60,162.41	\$65,643.37	\$13,447.82	\$31,269.26	(\$165.33)	(\$41,319.09)
FINANCIAL IMPACT CHARGE	\$0.00	\$0.00	\$0.00	\$0.00	\$0.00	\$0.00	\$0.00
	28	29	30	31			
DAM ENERGY	\$156,580.68	\$175,907.92	\$199,966.35	\$195,417.76			
DAM LOSSES	(\$292,662.45)	(\$331,258.42)	(\$373,643.10)	(\$362,705.79)			
BALANCING ENERGY	(\$5,234.05)	(\$6,951.94)	(\$35,891.66)	(\$16,249.74)			
BALANCING LOSSES	(\$10,657.77)	(\$15,687.43)	(\$1,988.78)	(\$11,922.27)			
BALANCING CONGESTION	\$6,681.16	(\$2,077.28)	\$9,034.74	\$178,180.42			
FINANCIAL IMPACT CHARGE	\$0.00	(\$6.74)	\$0.00	(\$0.77)			



SETTLEMENTS REPORT
 October 2019 Close-Out Settlement
 July 8, 2020

Close-Out Settlement – Market Residuals Analysis

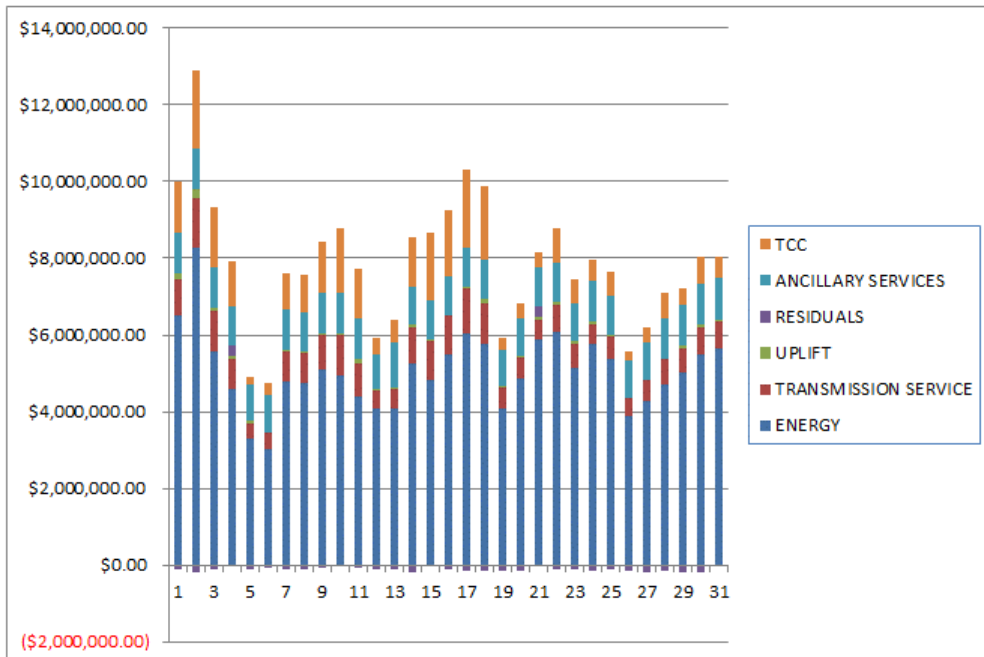
	MONDAY	TUESDAY	WEDNESDAY	THURSDAY	FRIDAY	SATURDAY	SUNDAY
		1	2	3	4	5	6
DAM ENERGY		\$194,044.58	\$224,923.81	\$194,147.78	\$174,083.66	\$125,247.14	\$111,220.65
DAM LOSSES		(\$377,134.70)	(\$406,722.31)	(\$361,489.63)	(\$310,542.74)	(\$235,557.84)	(\$211,874.40)
BALANCING ENERGY		(\$28,962.70)	(\$34,963.57)	(\$5,150.50)	(\$8,399.50)	(\$13,192.27)	(\$20,402.23)
BALANCING LOSSES		(\$22,633.89)	(\$27,157.53)	(\$9,557.00)	(\$5,239.11)	\$6,685.02	(\$4,100.70)
BALANCING CONGESTION		\$129,690.73	\$40,950.41	\$69,913.33	\$423,737.09	\$20,634.08	\$58,040.62
FINANCIAL IMPACT CHARGE		\$0.00	\$0.00	\$0.00	\$0.00	\$0.00	\$0.00
	7	8	9	10	11	12	13
DAM ENERGY	\$166,347.28	\$161,086.05	\$125,099.16	\$107,164.90	\$96,944.61	\$128,890.21	\$125,925.58
DAM LOSSES	(\$307,346.32)	(\$302,715.46)	(\$241,355.80)	(\$202,021.47)	(\$180,417.65)	(\$241,313.66)	(\$232,193.67)
BALANCING ENERGY	(\$13,886.58)	(\$15,952.83)	(\$5,243.90)	(\$16,729.03)	\$18,942.82	(\$3,625.29)	(\$8,613.61)
BALANCING LOSSES	(\$11,385.53)	(\$1,388.55)	(\$3,986.28)	(\$9,928.58)	(\$44,044.02)	(\$8,972.16)	(\$7,538.60)
BALANCING CONGESTION	\$61,523.32	\$37,950.95	\$40,798.66	\$91,930.48	\$41,411.05	\$8,307.54	\$19,346.65
FINANCIAL IMPACT CHARGE	\$0.00	\$0.00	\$0.00	\$0.00	\$0.00	(\$710.47)	\$0.00
	14	15	16	17	18	19	20
DAM ENERGY	\$160,600.42	\$152,509.39	\$167,477.03	\$170,996.16	\$160,507.49	\$141,592.79	\$148,060.53
DAM LOSSES	(\$288,777.89)	(\$279,191.80)	(\$299,749.87)	(\$310,923.76)	(\$297,011.66)	(\$258,386.43)	(\$273,915.58)
BALANCING ENERGY	(\$2,946.88)	(\$29,650.55)	(\$13,245.09)	(\$3,972.44)	(\$16,704.22)	(\$50,998.13)	(\$43,722.45)
BALANCING LOSSES	(\$19,715.13)	(\$5,325.09)	(\$16,364.72)	(\$30,748.15)	(\$14,779.18)	(\$1,588.10)	\$6,825.49
BALANCING CONGESTION	(\$22,586.86)	\$111,344.14	\$45,487.18	\$18,131.88	\$3,126.47	\$19,345.10	\$8,233.56
FINANCIAL IMPACT CHARGE	\$0.00	(\$48.53)	\$0.00	\$0.00	\$0.00	\$0.00	\$0.00
	21	22	23	24	25	26	27
DAM ENERGY	\$189,359.72	\$191,469.66	\$174,824.64	\$163,405.74	\$174,012.56	\$138,703.06	\$144,419.32
DAM LOSSES	(\$358,322.55)	(\$356,390.28)	(\$327,950.74)	(\$299,836.74)	(\$326,816.11)	(\$265,161.86)	(\$271,741.25)
BALANCING ENERGY	(\$20,121.35)	(\$4,736.85)	(\$2,212.61)	\$11,262.00	\$5,830.82	(\$8,548.43)	\$2,021.27
BALANCING LOSSES	(\$6,418.22)	(\$8,015.09)	(\$14,781.40)	(\$41,128.56)	(\$6,285.99)	\$2,436.88	(\$17,186.10)
BALANCING CONGESTION	\$472,176.97	\$60,162.41	\$65,643.37	\$13,447.83	\$31,269.26	(\$165.34)	(\$41,319.09)
FINANCIAL IMPACT CHARGE	\$0.00	\$0.00	\$0.00	\$0.00	\$0.00	\$0.00	\$0.00
	28	29	30	31			
DAM ENERGY	\$156,560.69	\$175,907.92	\$199,966.35	\$195,417.77			
DAM LOSSES	(\$292,662.46)	(\$331,258.42)	(\$373,643.10)	(\$362,705.79)			
BALANCING ENERGY	(\$5,234.06)	(\$6,951.94)	(\$35,891.66)	(\$16,249.73)			
BALANCING LOSSES	(\$10,657.77)	(\$15,687.43)	(\$1,988.78)	(\$11,922.27)			
BALANCING CONGESTION	\$6,681.16	(\$2,077.28)	\$9,034.73	\$178,180.41			
FINANCIAL IMPACT CHARGE	\$0.00	(\$6.74)	\$0.00	(\$0.78)			



SETTLEMENTS REPORT
 October 2019 Close-Out Settlement
 July 8, 2020

4-Month Settlement Adjustment – Market Costs Analysis

	MONDAY	TUESDAY	WEDNESDAY	THURSDAY	FRIDAY	SATURDAY	SUNDAY
		1	2	3	4	5	6
ENERGY		\$6,503,683.07	\$8,273,240.68	\$5,565,244.29	\$4,592,442.66	\$3,307,347.86	\$3,009,815.08
TRANSMISSION SERVICE		\$941,414.65	\$1,286,401.29	\$1,042,674.55	\$786,933.16	\$398,487.32	\$424,163.45
UPLIFT		\$149,499.46	\$245,132.32	\$95,386.97	\$90,115.29	\$54,334.76	\$33,507.04
RESIDUALS		(\$104,995.99)	(\$202,969.20)	(\$112,136.04)	\$273,639.39	(\$96,183.85)	(\$67,116.06)
ANCILLARY SERVICES		\$1,071,532.19	\$1,040,812.36	\$1,047,601.86	\$1,016,458.13	\$946,719.50	\$975,872.85
TCC		\$1,327,992.89	\$2,045,887.33	\$1,580,115.29	\$1,176,572.99	\$205,390.55	\$286,478.21
	7	8	9	10	11	12	13
ENERGY	\$4,793,113.64	\$4,727,488.19	\$5,117,504.60	\$4,947,467.10	\$4,396,406.33	\$4,065,046.18	\$4,066,207.97
TRANSMISSION SERVICE	\$777,908.69	\$797,773.72	\$896,548.72	\$1,048,541.61	\$875,600.37	\$501,380.52	\$530,572.51
UPLIFT	\$20,999.06	\$47,876.29	\$42,001.12	\$39,074.56	\$114,468.66	\$29,344.03	\$16,518.78
RESIDUALS	(\$104,747.84)	(\$121,019.83)	(\$84,688.16)	(\$28,583.71)	(\$67,163.19)	(\$117,423.82)	(\$103,073.65)
ANCILLARY SERVICES	\$1,063,228.20	\$1,007,437.21	\$1,030,002.15	\$1,042,807.08	\$1,033,693.57	\$900,922.61	\$1,196,480.79
TCC	\$950,351.23	\$1,000,809.19	\$1,339,777.56	\$1,721,482.23	\$1,316,948.91	\$429,358.31	\$581,607.00
	14	15	16	17	18	19	20
ENERGY	\$5,271,219.09	\$4,826,386.36	\$5,484,464.49	\$6,036,804.84	\$5,762,418.02	\$4,083,510.61	\$4,871,910.35
TRANSMISSION SERVICE	\$920,461.83	\$1,036,397.77	\$1,015,199.32	\$1,177,516.69	\$1,075,356.90	\$539,264.47	\$555,768.59
UPLIFT	\$65,437.03	\$11,923.64	\$14,720.82	\$30,127.46	\$101,471.84	\$53,887.07	\$22,642.07
RESIDUALS	(\$173,426.33)	(\$50,362.43)	(\$116,395.47)	(\$156,516.31)	(\$164,861.10)	(\$150,034.78)	(\$154,518.43)
ANCILLARY SERVICES	\$1,006,877.92	\$1,012,339.20	\$1,021,642.01	\$1,021,405.73	\$1,018,597.22	\$942,560.09	\$997,500.31
TCC	\$1,291,708.91	\$1,775,818.18	\$1,721,140.00	\$2,059,865.61	\$1,924,704.31	\$288,131.24	\$370,755.66
	21	22	23	24	25	26	27
ENERGY	\$5,865,879.73	\$6,090,658.36	\$5,153,628.34	\$5,773,084.59	\$5,363,145.81	\$3,890,041.38	\$4,286,820.63
TRANSMISSION SERVICE	\$540,015.37	\$681,225.23	\$610,424.93	\$504,719.72	\$584,724.76	\$464,783.63	\$519,884.06
UPLIFT	\$73,456.55	\$79,391.33	\$62,692.54	\$87,848.95	\$57,907.85	\$5,963.78	\$1,839.72
RESIDUALS	\$276,674.57	(\$117,510.16)	(\$104,476.75)	(\$152,849.74)	(\$121,789.46)	(\$132,735.69)	(\$183,805.84)
ANCILLARY SERVICES	\$1,016,663.09	\$1,035,057.75	\$1,011,668.62	\$1,027,627.36	\$1,028,501.95	\$961,867.52	\$1,003,503.71
TCC	\$400,945.22	\$886,355.07	\$621,178.00	\$572,707.88	\$623,357.61	\$231,853.44	\$392,228.97
	28	29	30	31			
ENERGY	\$4,688,753.69	\$5,023,055.80	\$5,502,230.73	\$5,657,387.69			
TRANSMISSION SERVICE	\$684,810.17	\$636,918.07	\$709,613.78	\$696,591.77			
UPLIFT	\$3,112.80	\$63,057.85	\$56,952.41	\$52,741.73			
RESIDUALS	(\$145,312.43)	(\$180,073.89)	(\$202,522.45)	(\$17,280.39)			
ANCILLARY SERVICES	\$1,043,626.58	\$1,045,976.21	\$1,045,870.41	\$1,081,731.43			
TCC	\$693,375.50	\$443,013.66	\$721,678.25	\$536,861.46			



SETTLEMENTS REPORT
 October 2019 Close-Out Settlement
 July 8, 2020

Close-Out Settlement – Market Costs Analysis

	MONDAY	TUESDAY	WEDNESDAY	THURSDAY	FRIDAY	SATURDAY	SUNDAY
		1	2	3	4	5	6
ENERGY		\$6,503,683.45	\$8,273,240.68	\$5,565,244.17	\$4,592,442.53	\$3,307,348.14	\$3,009,814.94
TRANSMISSION SERVICE		\$941,374.11	\$1,286,359.13	\$1,042,634.45	\$786,894.78	\$398,449.90	\$424,126.28
UPLIFT		\$149,499.45	\$245,132.33	\$95,387.01	\$90,115.29	\$54,334.75	\$33,507.05
RESIDUALS		(\$104,995.98)	(\$202,969.19)	(\$112,136.02)	\$273,639.40	(\$96,183.87)	(\$67,116.06)
ANCILLARY SERVICES		\$1,071,454.35	\$1,040,731.41	\$1,047,524.88	\$1,016,384.45	\$946,647.67	\$975,801.49
TCC		\$1,327,992.89	\$2,045,887.33	\$1,580,115.29	\$1,176,572.99	\$205,390.55	\$286,478.21
	7	8	9	10	11	12	13
ENERGY	\$4,793,113.81	\$4,727,488.23	\$5,117,504.59	\$4,947,467.52	\$4,396,406.32	\$4,065,046.12	\$4,066,208.26
TRANSMISSION SERVICE	\$777,868.38	\$797,732.83	\$896,508.87	\$1,048,503.30	\$875,562.46	\$501,343.44	\$530,537.39
UPLIFT	\$20,999.06	\$47,876.28	\$42,001.12	\$39,074.55	\$114,468.66	\$29,344.03	\$16,518.78
RESIDUALS	(\$104,747.83)	(\$121,019.84)	(\$84,688.16)	(\$28,583.70)	(\$67,163.19)	(\$117,423.83)	(\$103,073.65)
ANCILLARY SERVICES	\$1,063,150.81	\$1,007,358.73	\$1,029,925.64	\$1,042,733.51	\$1,033,620.79	\$900,851.43	\$1,196,413.39
TCC	\$950,351.23	\$1,000,809.19	\$1,339,777.56	\$1,721,482.23	\$1,316,948.91	\$429,358.31	\$581,607.00
	14	15	16	17	18	19	20
ENERGY	\$5,271,218.94	\$4,826,386.34	\$5,484,464.73	\$6,036,804.80	\$5,762,418.11	\$4,083,510.69	\$4,871,910.24
TRANSMISSION SERVICE	\$920,424.05	\$1,036,359.74	\$1,015,160.20	\$1,177,478.12	\$1,075,319.58	\$539,227.85	\$555,730.53
UPLIFT	\$65,437.02	\$11,923.65	\$14,720.82	\$30,127.46	\$101,471.85	\$53,887.08	\$22,642.06
RESIDUALS	(\$173,426.34)	(\$50,362.44)	(\$116,395.47)	(\$156,516.31)	(\$164,861.10)	(\$150,034.77)	(\$154,518.45)
ANCILLARY SERVICES	\$1,006,805.40	\$1,012,266.18	\$1,021,566.89	\$1,021,331.66	\$1,018,525.59	\$942,489.78	\$997,427.24
TCC	\$1,291,708.91	\$1,775,818.18	\$1,721,140.00	\$2,059,865.61	\$1,924,704.31	\$288,131.24	\$370,755.66
	21	22	23	24	25	26	27
ENERGY	\$5,865,879.73	\$6,090,658.54	\$5,153,628.53	\$5,773,084.76	\$5,363,145.80	\$3,890,041.16	\$4,286,820.47
TRANSMISSION SERVICE	\$539,978.83	\$681,188.33	\$610,388.55	\$504,682.01	\$584,685.50	\$464,746.32	\$519,844.26
UPLIFT	\$73,456.54	\$79,391.34	\$62,692.54	\$87,848.95	\$57,907.85	\$5,963.78	\$1,839.72
RESIDUALS	\$276,674.57	(\$117,510.15)	(\$104,476.74)	(\$152,849.73)	(\$121,789.46)	(\$132,735.69)	(\$183,805.85)
ANCILLARY SERVICES	\$1,016,592.96	\$1,034,986.89	\$1,011,598.79	\$1,027,554.98	\$1,028,426.57	\$961,795.90	\$1,003,427.32
TCC	\$400,945.22	\$886,355.07	\$621,178.00	\$572,707.88	\$623,357.61	\$231,853.44	\$392,228.97
	28	29	30	31			
ENERGY	\$4,688,754.03	\$5,023,056.07	\$5,502,230.73	\$5,657,387.50			
TRANSMISSION SERVICE	\$684,769.54	\$636,875.78	\$709,571.90	\$696,549.59			
UPLIFT	\$3,112.80	\$63,057.67	\$56,952.41	\$52,741.69			
RESIDUALS	(\$145,312.44)	(\$180,073.89)	(\$202,522.46)	(\$17,280.39)			
ANCILLARY SERVICES	\$1,043,548.56	\$1,045,895.01	\$1,045,790.03	\$1,081,650.45			
TCC	\$693,375.50	\$443,013.66	\$721,678.25	\$536,861.46			

