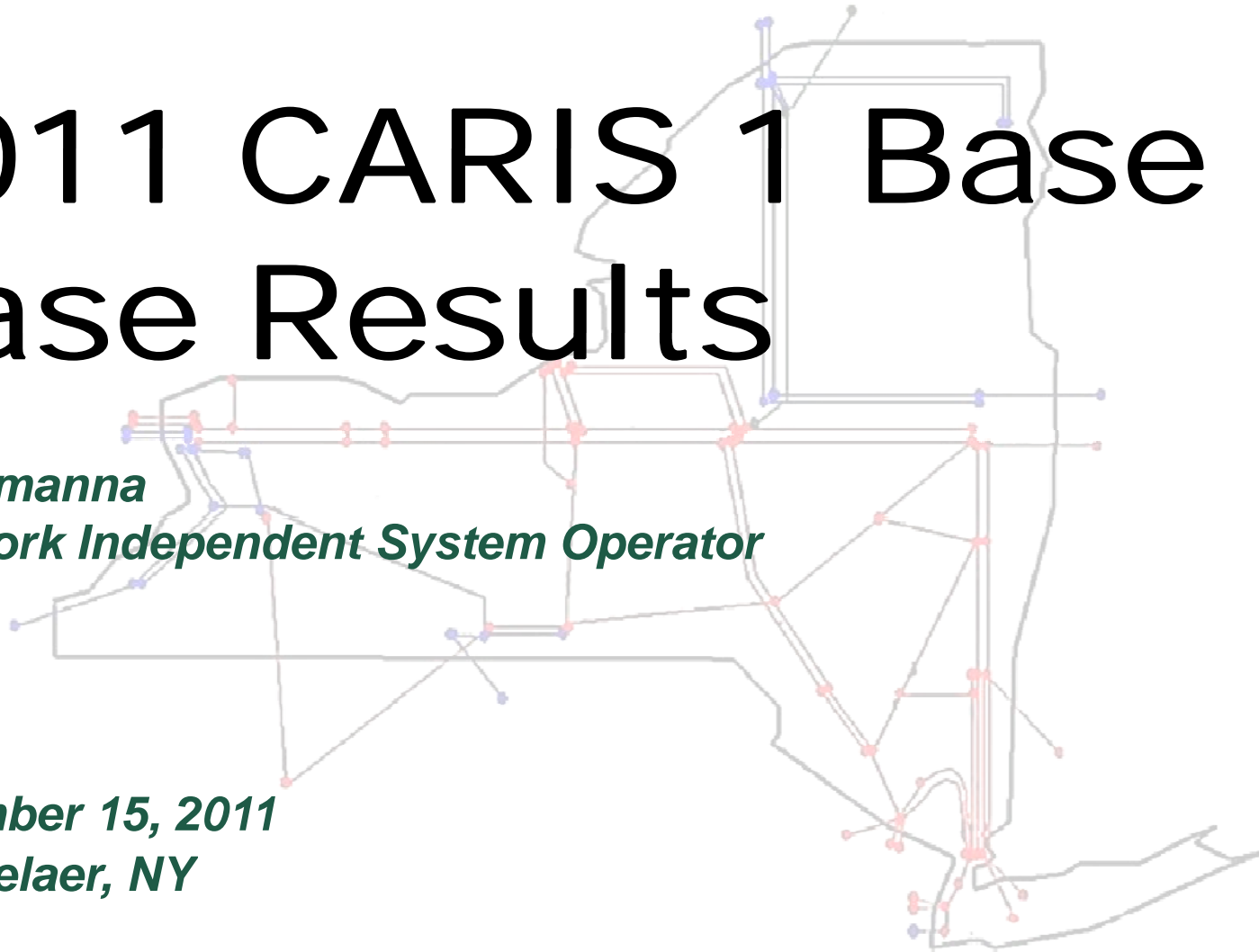


2011 CARIS 1 Base Case Results

*Bill Lamanna
New York Independent System Operator*

*November 15, 2011
Rensselaer, NY*



Topics:

- ◆ **Modeling Results vs. 2010 Actual**
- ◆ **Updated Base Case Results**

Modeling Results vs. 2010 Actual

Demand\$ Congestion (\$M)	2010 Actual	2011 MAPS (w/out Astoria Energy 2)
CENTRAL EAST	\$491,404,118	\$288,254,976
LEEDS PLSNTVLY 345	\$232,086,300	\$191,084,128
Total Congestion	\$1,155,417,853	\$989,742,758

NYCA Generation (GWh)	Actual 2010 Gold Book	MAPS 2011 (w/out Astoria Energy 2)
SuperZone-1 = West + Genessee + Central + North + Mohawk Valley	68,568	70,965
SuperZone-2 = Capital + Hudson Valley + Millwood	35,936	38,787
SuperZone-3 = Dunwoodi + NYC + Long Island	35,050	29,538
Total NYCA	139,554	139,289

Net Imports (GWh)	2010 Actual	2011 MAPS (w/out Astoria Energy 2)
NYISO-PJM_SOFT *	7,467	11,744
Neptune HVDC	4,766	4,133
ISONE-NYISO_SOFT	1,484	(717)
LIPA Cable	534	793
NYISO-IESO	2,573	1,453
NYISO-HQ CHA	4,863	4,260
Cross Sound Cable	2,404	1,283
VFT *		1,665
Total Imports (GWh)	24,089	24,613
Total NYCA Generation (GWh)	139,554	139,289
TOTAL (GWh)	163,643	163,902

* VFT is included in the NYISO-PJM_SOFT total

Updated Base Case Results

- ◆ **Implemented previously presented fuel price forecast for New England 2012-2020**
- ◆ **Revision to HR for NE from 3 to 2**
- ◆ **Revision to CSC model to allow full 330 MW import capability**
- ◆ **Aligned ConEd and LIPA ratings and flows for consistency to SCUC**
- ◆ **Increased LIPA Cable (NNC) rating from 150 to 200 MW**
- ◆

Flat Dispatch Hurdle Rates (\$/MWh)

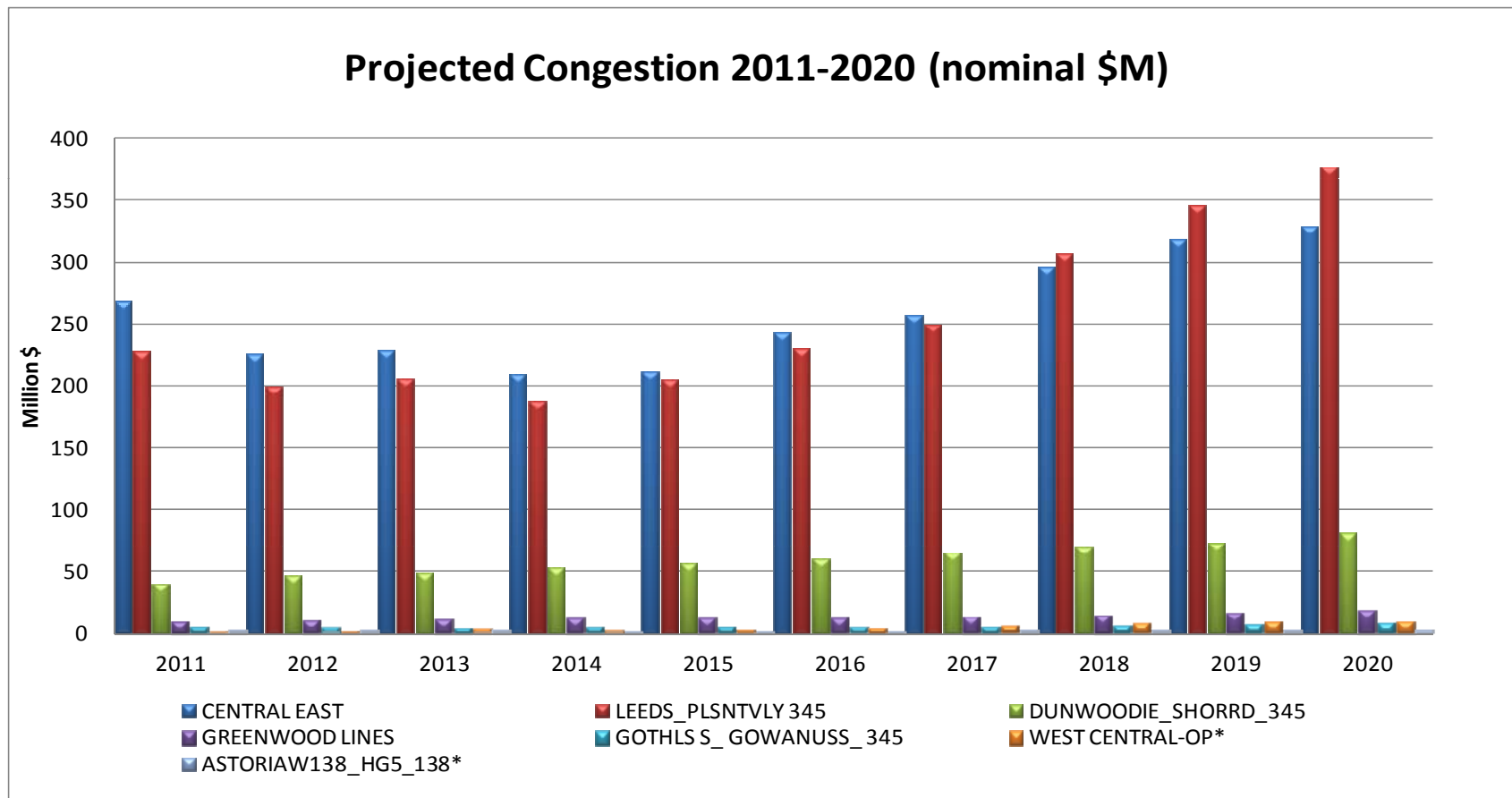
- ◆ **New England: 2 (decreased from 3)**
- ◆ **PJM: 3 (unchanged)**
- ◆ **IESO: 5 (unchanged)**

Projected Demand\$ Congestion by Constraint (\$M)

Nominal Value (\$M)	2011	2012	2013	2014	2015	2016	2017	2018	2019	2020	Total
CENTRAL EAST	268	226	229	209	212	243	257	295	318	329	2,584
LEEDS_PLSNTVLY_345	228	199	206	187	205	231	250	307	346	377	2,535
DUNWOODIE_SHORRD_345	41	46	49	54	57	60	65	69	73	80	595
GREENWOOD LINES	10	10	11	12	12	12	13	15	17	19	131
GOHLS S_GOWANUSS_345	5	4	4	4	5	5	5	6	7	8	52
WEST CENTRAL-OP*	0	1	3	2	2	4	5	8	9	9	45
ASTORIAW138_HG5_138*	0	0	0	0	0	1	1	1	1	1	5

* Reported numbers represent absolute values.

Projected Demand\$ Congestion by Constraint (\$M)



Nominal Demand\$ Congestion (\$M) 2006-2020

Nominal Value (\$M)	2006	2007	2008	2009	2010	2011	2012	2013	2014	2015	2016	2017	2018	2019	2020
CENTRAL EAST	195	572	1,199	435	491	268	226	229	209	212	243	257	295	318	329
LEEDS_PLSNTVLY_345	452	435	667	149	232	228	199	206	187	205	231	250	307	346	377
DUNWOODIE_SHORRD_345	492	260	187	118	155	41	46	49	54	57	60	65	69	73	80
GREENWOOD LINES	119	90	113	87	132	10	10	11	12	12	12	13	15	17	19
GOTHLS S_GOWANUSS_345	0	0	0	0	0	5	4	4	4	5	5	5	6	7	8
WEST CENTRAL-OP*	2	51	55	1	0	0	1	3	2	2	4	5	8	9	9
ASTORIAW138_HG5_138*	1	2	1	0	0	0	0	0	0	0	1	1	1	1	1

* Reported numbers represent absolute values.

Present Value of Demand\$ Congestion (\$M) 2006-2020

Present Value (\$M)	2006	2007	2008	2009	2010	2011	2012	2013	2014	2015	2016	2017	2018	2019	2020
CENTRAL EAST	268	733	1,432	484	509	258	203	192	163	154	164	162	173	174	167
LEEDS_PLSNTVLY_345	622	558	797	166	240	220	179	173	146	149	156	157	180	189	192
DUNWOODIE_SHORRD_345	677	333	223	131	161	39	42	41	42	41	40	41	41	40	41
GREENWOOD LINES	164	115	135	97	137	9	9	9	9	9	8	8	9	9	10
GOTHS S_GOWANUSS_345	0	0	0	0	0	5	4	3	3	3	3	3	3	4	4
WEST CENTRAL-OP*	3	65	66	1	0	0	1	3	2	2	3	3	5	5	5
ASTORIAW138_HG5_138*	2	2	2	0	0	0	0	0	0	0	0	0	0	0	0

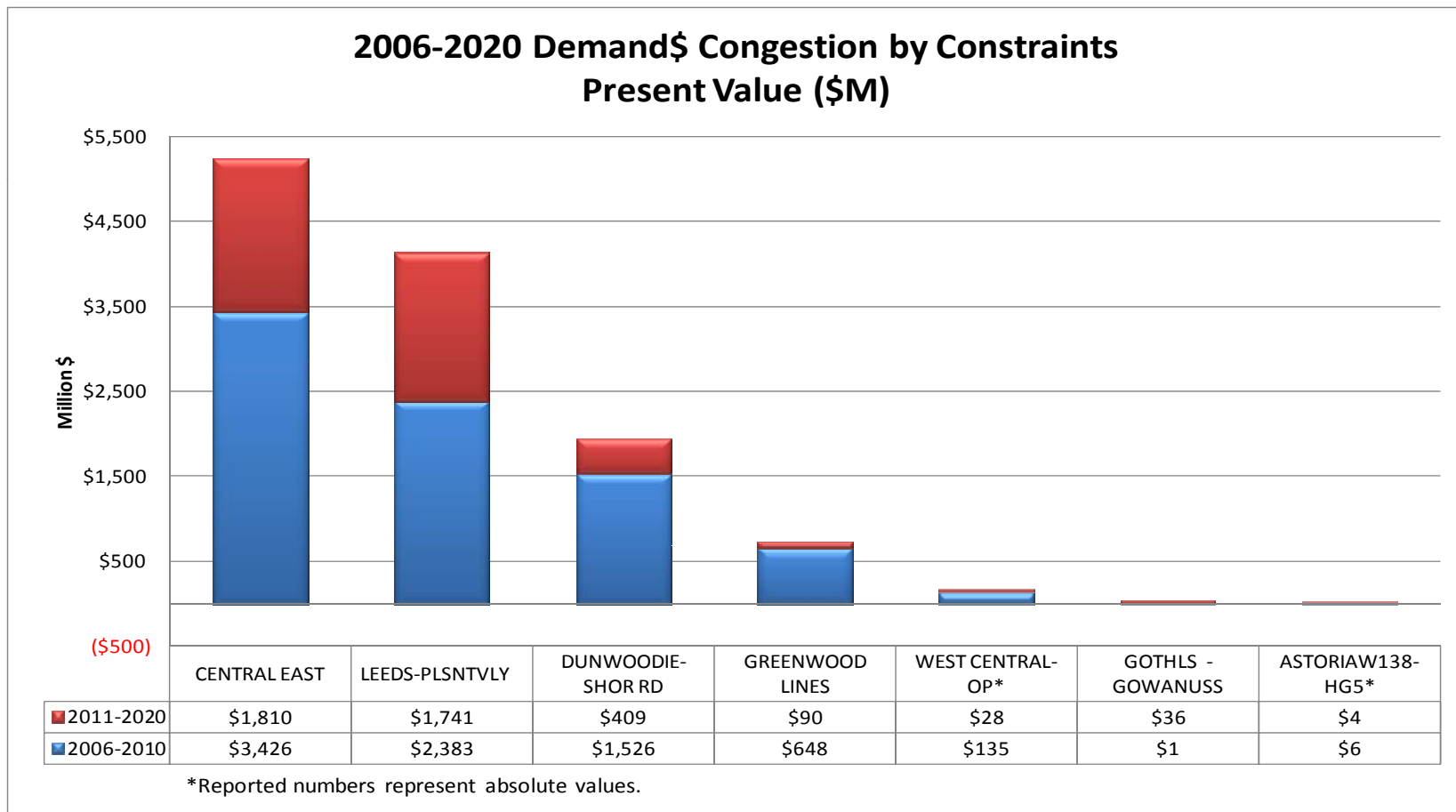
* Reported numbers represent absolute values.

Summation of Present Value of Demand\$ Congestion 2006-2020

	Present Value of Congestion (\$M)		
	Historic	Future	Sum
CENTRAL EAST	\$3,426	\$1,810	\$5,237
LEEDS-PLSNTVLY	\$2,383	\$1,741	\$4,124
DUNWOODIE-SHOR RD	\$1,526	\$409	\$1,935
GREENWOOD LINES	\$648	\$90	\$737
WEST CENTRAL-OP*	\$135	\$28	\$163
GOTHLS - GOWANUSS	\$1	\$36	\$37
ASTORIAW138-HG5*	\$6	\$4	\$10

* Reported numbers represent absolute values.

Top CARIS Constraints Present Value (\$M) 2006-2020



Historic Demand\$ Congestion by Zone (\$M)

Zone	2006	2007	2008	2009	2010
West	1	14	25	14	1
Genesee	2	14	9	4	6
Central	4	9	18	8	11
North	0	0	2	3	1
Mohawk Valley	2	5	10	4	5
Capital	27	74	143	53	62
Hudson Valley	54	87	176	57	73
Millwood	27	31	78	16	23
Dunwoodie	44	56	124	41	49
NY City	673	700	1403	503	560
Long Island	708	518	624	274	350
NYCA Total	1,542	1,508	2,613	977	1,141

Historic Congestion Source: PROBE DAM quarterly reports; NYCA totals represent the sum of absolute values.

Projected Demand\$ Congestion by Zone (\$M)

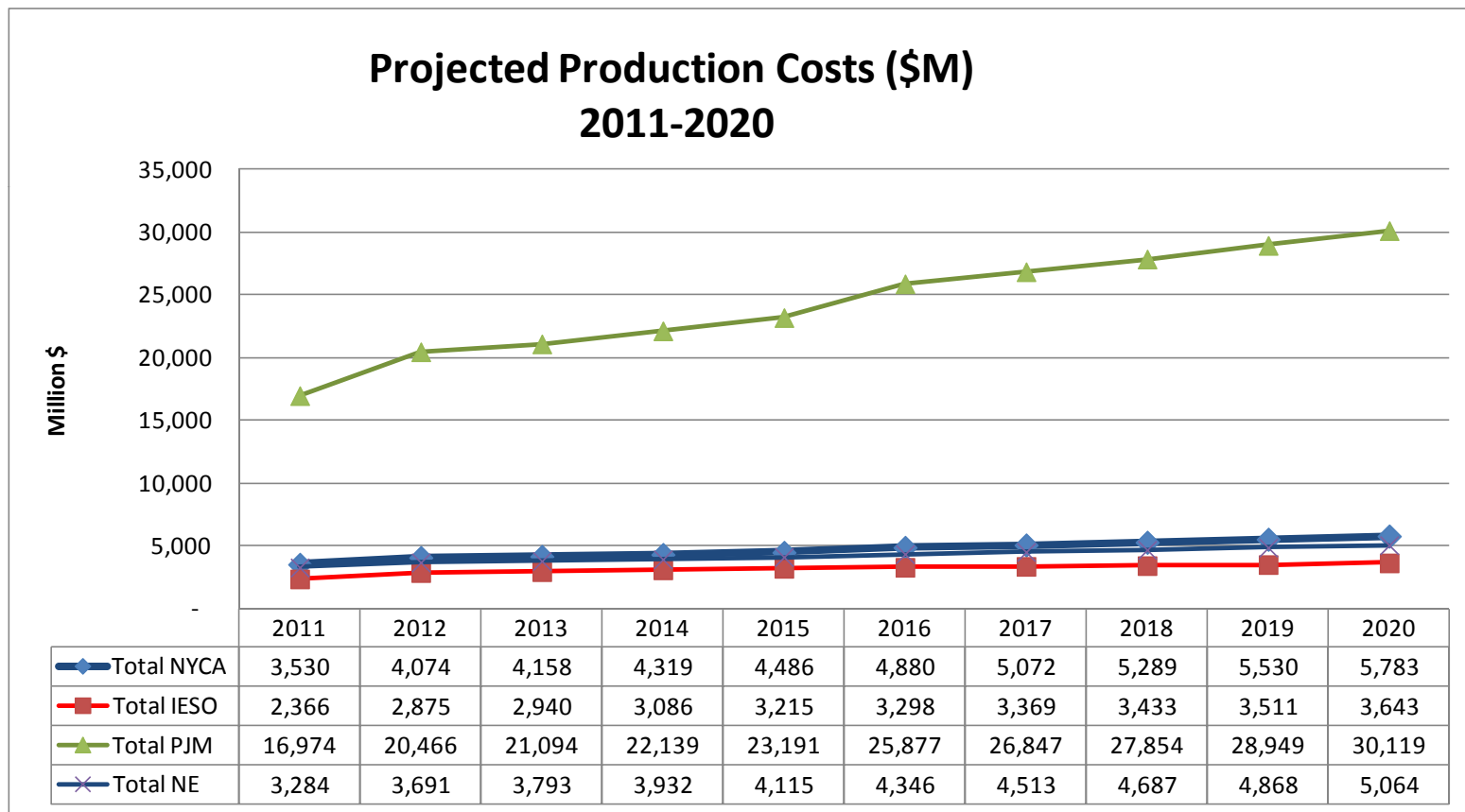
Demand\$ Congestion (\$M)	2011	2012	2013	2014	2015	2016	2017	2018	2019	2020
WEST	1	0	1	1	1	2	2	3	3	5
GENESSEE	1	0	0	0	0	0	1	1	2	2
CENTRAL	5	4	4	4	4	5	5	6	6	6
NORTH	5	7	7	7	8	8	8	9	10	10
MOHAWKVA	3	2	2	2	2	3	3	3	3	4
CAPITAL	46	40	41	37	38	43	46	52	56	57
HUDSONVA	56	50	51	47	50	55	59	69	76	80
MILLWOOD	19	17	18	16	17	19	21	24	27	28
DUNWOODI	37	33	34	31	33	37	39	46	51	55
NYCITY	343	307	319	301	317	347	373	442	492	530
LONGISLA	192	185	193	190	202	222	240	273	297	320
Total NYCA	709	646	670	636	672	740	796	929	1,023	1,098

Reported numbers represent absolute values.

Projected Production Costs (\$M)

Production Cost (\$M)	2011	2012	2013	2014	2015	2016	2017	2018	2019	2020
WEST	360	404	411	419	416	438	458	484	502	517
GENESSEE	31	36	36	36	37	37	37	38	38	39
CENTRAL	480	546	558	587	602	637	656	675	698	720
NORTH	13	15	15	19	20	23	23	23	22	23
MOHAWKVA	4	4	4	5	5	5	5	4	4	4
CAPITAL	766	898	921	963	1,007	1,059	1,103	1,154	1,200	1,258
HUDSONVA	110	86	84	82	83	99	112	133	148	165
MILLWOOD	116	132	134	136	138	140	141	143	145	147
DUNWOODI	-	-	-	-	-	-	-	-	-	-
NYCITY	1,196	1,446	1,467	1,529	1,608	1,803	1,874	1,939	2,039	2,139
LONGISLA	454	508	528	543	571	640	663	697	735	771
Total NYCA Gen.	3,530	4,074	4,158	4,319	4,486	4,880	5,072	5,289	5,530	5,783
Total IESO	2,366	2,875	2,940	3,086	3,215	3,298	3,369	3,433	3,511	3,643
Total PJM	16,974	20,466	21,094	22,139	23,191	25,877	26,847	27,854	28,949	30,119
Total NE	3,284	3,691	3,793	3,932	4,115	4,346	4,513	4,687	4,868	5,064
Total	26,153	31,106	31,985	33,476	35,007	38,401	39,801	41,262	42,858	44,609

Projected Production Costs (\$M)



Historic Load and Generation (GWh)

YEAR	NYCA Actual GWh	
	Load	Generation
2004	160,211	147,171
2005	167,208	153,265
2006	162,237	148,359
2007	167,341	150,407
2008	165,613	144,619
2009	158,780	136,501
2010	163,505	139,357

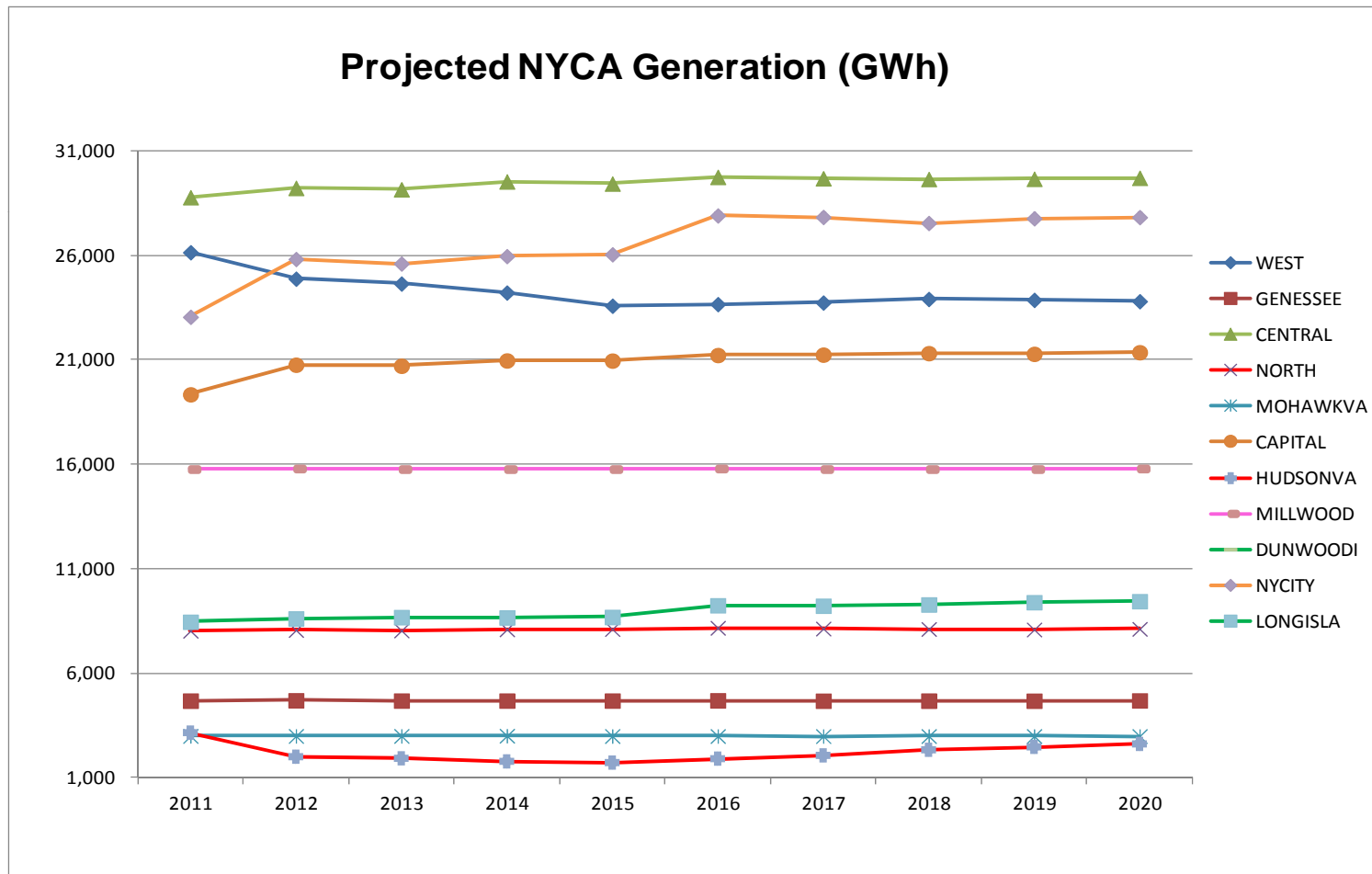
Source: NYISO Gold Books, 2005-2011.

Projected Generation (GWh)

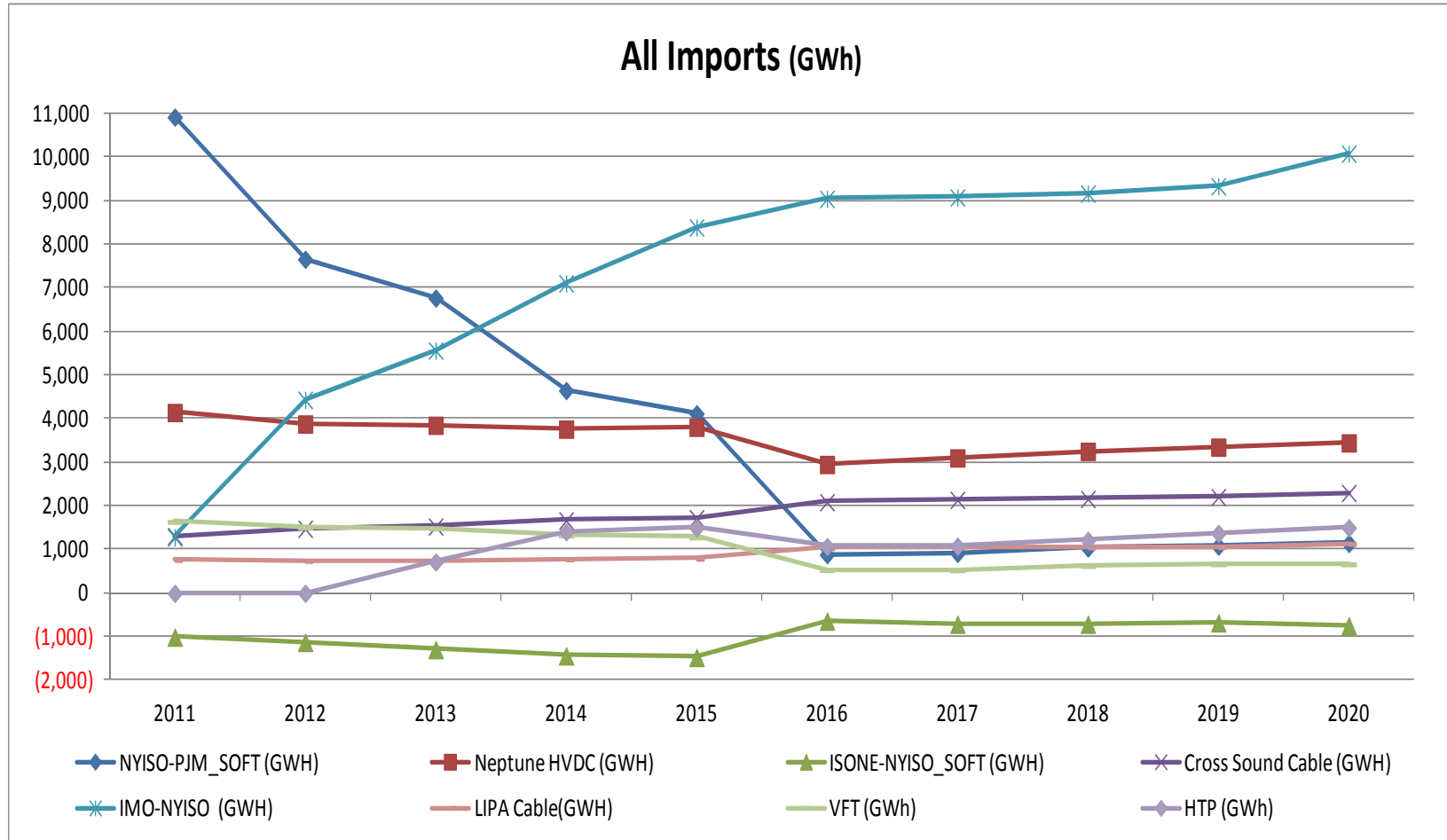
Generation GWh	2011	2012	2013	2014	2015	2016	2017	2018	2019	2020
WEST	26,143	24,879	24,644	24,213	23,584	23,661	23,733	23,908	23,863	23,799
GENESSEE	4,678	4,694	4,679	4,681	4,680	4,692	4,675	4,676	4,675	4,690
CENTRAL	28,778	29,222	29,155	29,532	29,430	29,750	29,684	29,647	29,660	29,703
NORTH	8,024	8,061	8,038	8,095	8,105	8,164	8,131	8,108	8,084	8,114
MOHAWKVA	2,988	2,988	2,992	2,998	2,986	2,984	2,982	2,983	2,983	2,981
CAPITAL	19,341	20,759	20,710	20,964	20,958	21,221	21,241	21,312	21,278	21,357
HUDSONVA	3,142	1,992	1,913	1,768	1,709	1,898	2,056	2,324	2,463	2,605
MILLWOOD	15,763	15,789	15,763	15,763	15,764	15,789	15,762	15,763	15,763	15,789
DUNWOODI	6	6	6	6	6	6	6	6	6	6
NYCITY	23,052	25,819	25,603	25,957	26,044	27,904	27,830	27,542	27,767	27,825
LONGISLA	8,454	8,612	8,675	8,659	8,683	9,240	9,219	9,281	9,392	9,440
Total NYCA	140,369	142,821	142,178	142,636	141,947	145,306	145,319	145,550	145,933	146,309
Total IESO	174,148	180,925	182,357	184,088	185,513	186,956	186,985	187,101	187,314	188,487
Total PJM	730,181	721,556	720,798	718,785	718,091	712,724	712,747	713,335	713,641	713,891
Total NE	131,870	131,734	131,630	131,685	131,728	133,120	133,087	133,136	133,223	133,342
Total HQ*	4,326	4,327	4,420	4,404	4,382	4,350	4,302	4,298	4,420	4,414
Total	1,180,893	1,181,364	1,181,384	1,181,599	1,181,662	1,182,457	1,182,440	1,183,420	1,184,531	1,186,443

*Only Imports are modeled.

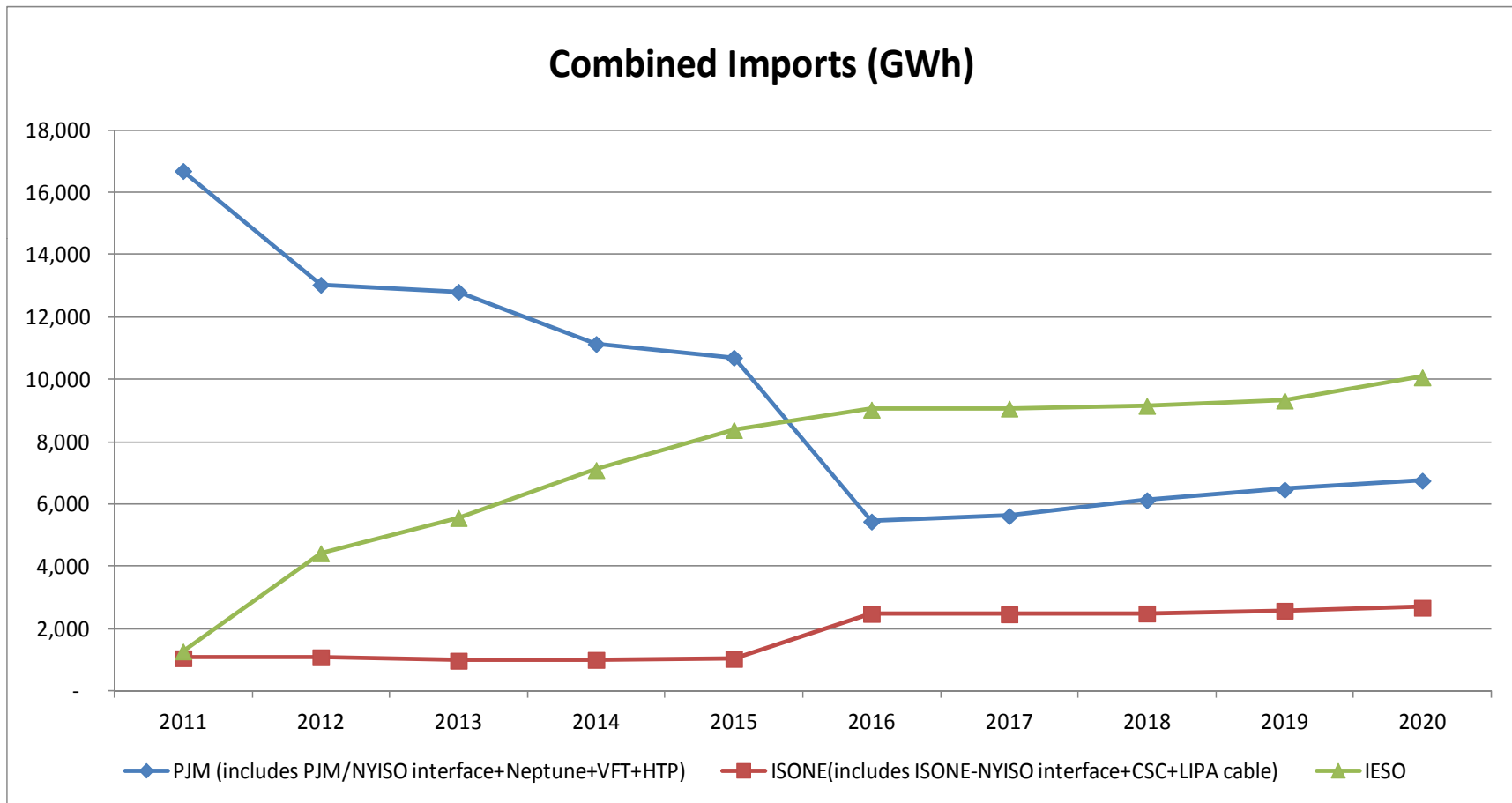
Projected NYCA Generation By Zone (GWh)



Projected Net Imports (GWh)



Projected Net Imports (GWh)

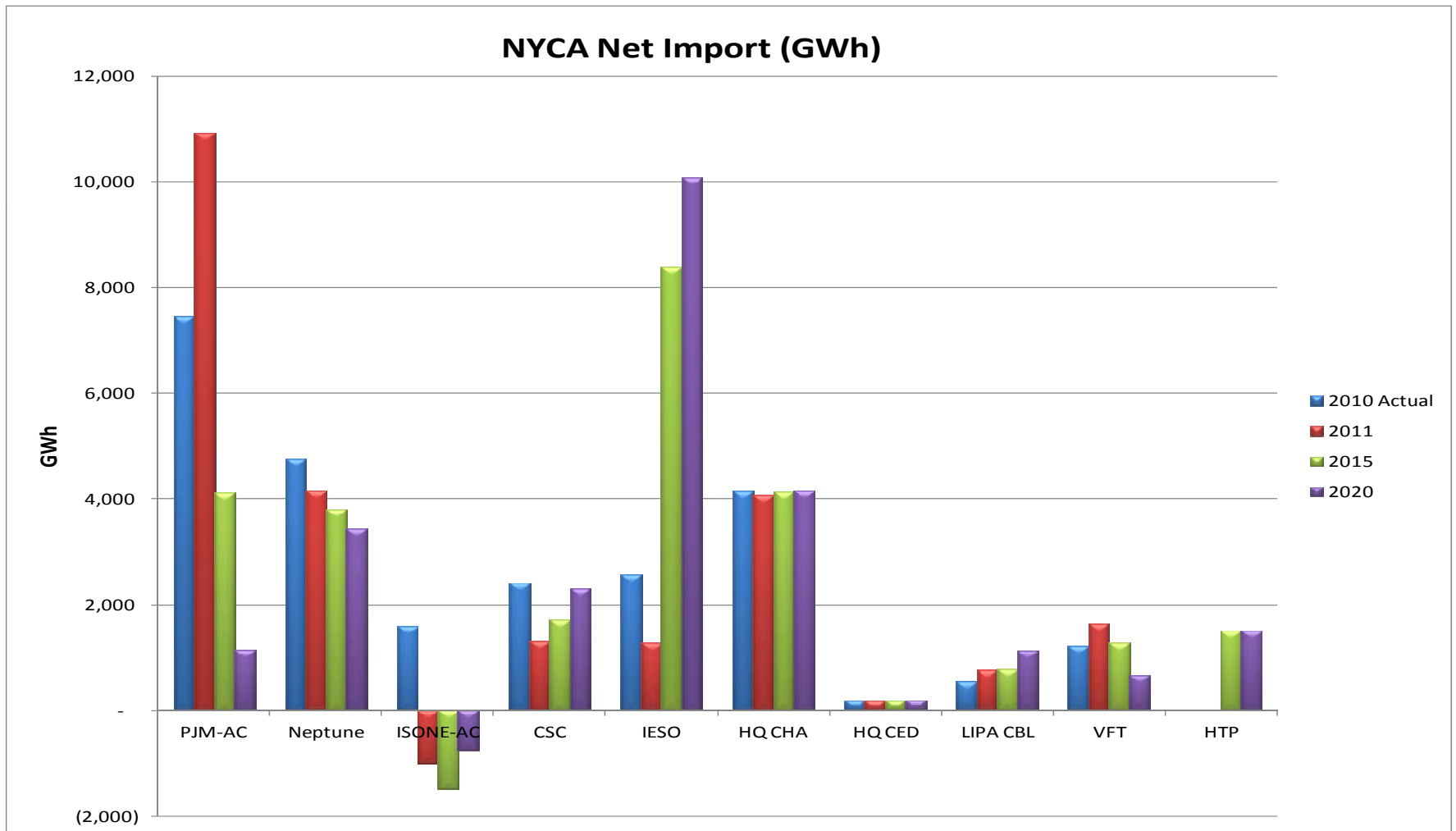


Projected NYCA Net Imports (GWh)

Import (GWh)	2011	2012	2013	2014	2015	2016	2017	2018	2019	2020
NYISO-PJM_SOFT	10,919	7,658	6,768	4,648	4,118	887	917	1,041	1,083	1,145
Neptune HVDC	4,146	3,881	3,851	3,764	3,808	2,954	3,104	3,254	3,353	3,449
ISONE-NYISO_SOFT	(1,007)	(1,125)	(1,291)	(1,436)	(1,471)	(637)	(709)	(711)	(677)	(748)
Cross Sound Cable	1,312	1,480	1,530	1,669	1,724	2,091	2,141	2,164	2,207	2,301
IMO-NYISO (GWH)	1,282	4,435	5,566	7,104	8,388	9,043	9,075	9,164	9,333	10,078
NYISO-HQ CHA	4,070	4,070	4,160	4,146	4,124	4,093	4,046	4,043	4,160	4,155
NYISO-HQ CED	189	190	193	192	191	189	189	188	193	192
LIPA Cable	761	742	749	780	792	1,033	1,044	1,049	1,060	1,134
VFT	1,637	1,510	1,487	1,326	1,280	536	528	625	664	665
HTP	-	-	717	1,410	1,501	1,076	1,081	1,214	1,374	1,503
TOTAL Imports	23,309	22,842	23,731	23,604	24,456	21,266	21,416	22,030	22,751	23,873

NYCA Net Imports

2010 Actual & 2011, 2015, 2020 Projected



Historic Zonal Generator Payments (\$M)

Zone	2006	2007	2008	2009	2010
West	1,530	1,630	1,701	835	1,035
Genesee	418	491	476	273	334
Central	1,612	1,753	1,825	1,062	1,280
North	633	659	779	393	406
Mohawk Valley	230	206	234	107	110
Capital	704	883	1,175	593	788
Hudson Valley	533	571	532	214	207
Millwood	1,145	1,252	1,725	773	887
Dunwoodie	56	39	39	28	11
NY City	1,895	2,072	2,405	1,125	1,369
Long Island	1,485	1,282	1,286	516	782
NYCA Total	10,241	10,840	12,178	5,919	7,209

Historic Generator Payment Source: PROBE DAM quarterly reports; Does not include BPCG and Ancillary services; DAM data include Virtual bidding & Transmission outages.

Projected Generator Payments (\$M)

Generator Payment (\$M)	2011	2012	2013	2014	2015	2016	2017	2018	2019	2020
WEST	1,027	1,111	1,131	1,160	1,184	1,240	1,285	1,334	1,380	1,428
GENESSEE	187	212	217	227	238	249	257	265	274	287
CENTRAL	1,202	1,369	1,406	1,476	1,543	1,637	1,692	1,751	1,817	1,896
NORTH	327	370	380	400	419	443	457	471	487	509
MOHAWKVA	122	138	143	149	155	163	169	174	181	188
CAPITAL	909	1,072	1,100	1,153	1,203	1,284	1,333	1,388	1,441	1,504
HUDSONVA	169	123	121	118	120	139	156	183	201	222
MILLWOOD	780	861	885	915	958	1,019	1,056	1,104	1,151	1,202
DUNWOODI	0	0	0	0	0	0	0	0	0	0
NYCITY	1,246	1,513	1,545	1,616	1,697	1,918	1,991	2,071	2,180	2,287
LONGISLA	491	541	560	579	609	683	711	753	795	839
Total NYCA	6,461	7,310	7,488	7,794	8,126	8,775	9,108	9,494	9,907	10,362

Historic Zonal Load Payments (\$M)

Zone	2006	2007	2008	2009	2010
West	868	983	1,061	511	629
Genesee	649	668	754	435	520
Central	779	928	1,060	569	726
North	351	413	474	193	183
Mohawk Valley	400	443	469	256	313
Capital	720	818	1,008	508	578
Hudson Valley	761	864	1,114	496	630
Millwood	252	263	385	132	168
Dunwoodie	442	494	706	315	375
NYCity	4,394	4,696	5,919	2,753	3,305
Long Island	2,353	2,261	2,535	1,231	1,577
NYCA Total	11,969	12,831	15,485	7,397	9,005

Historic Load Payment Source: PROBE DAM quarterly reports.
 DAM data includes Virtual bidding & Transmission outages.

Projected Load Payments (\$M)

Load Payments (\$M)	2011	2012	2013	2014	2015	2016	2017	2018	2019	2020
WEST	583	661	676	705	734	761	782	800	827	855
GENESSEE	410	464	478	500	524	550	572	593	619	649
CENTRAL	670	758	779	816	853	893	921	949	984	1,024
NORTH	216	281	292	306	324	343	358	371	388	408
MOHAWKVA	312	350	362	377	394	415	429	443	461	481
CAPITAL	524	579	597	617	646	684	707	734	767	801
HUDSONVA	530	587	607	630	661	703	731	764	801	840
MILLWOOD	151	167	172	178	187	200	208	220	231	244
DUNWOODI	320	352	362	374	391	416	433	458	482	510
NYCITY	2,893	3,187	3,275	3,388	3,545	3,770	3,923	4,153	4,382	4,640
LONGISLA	1,244	1,378	1,428	1,484	1,563	1,678	1,761	1,863	1,964	2,084
Total NYCA	7,853	8,765	9,027	9,376	9,822	10,412	10,823	11,348	11,905	12,536

Projected LBMPs (\$/MWh)

Load LBMP (\$/MWh)	2011	2012	2013	2014	2015	2016	2017	2018	2019	2020
WEST	39.9	45.4	46.7	48.9	51.2	53.4	55.3	57.0	59.2	61.4
GENESSEE	41.5	46.9	48.2	50.3	52.6	55.1	57.1	58.9	61.1	63.6
CENTRAL	42.8	48.3	49.7	51.9	54.3	57.1	59.2	61.2	63.5	66.0
NORTH	41.0	46.5	47.9	49.9	52.3	54.9	56.9	58.8	61.0	63.5
MOHAWKVA	43.8	49.3	50.7	52.8	55.3	58.2	60.3	62.4	64.8	67.4
CAPITAL	47.9	52.8	54.3	56.1	58.8	62.2	64.5	67.1	69.8	72.6
HUDSONVA	50.1	55.2	56.8	58.7	61.5	65.2	67.7	70.6	73.6	76.7
MILLWOOD	50.9	56.0	57.7	59.5	62.3	66.2	68.7	71.8	74.8	78.0
DUNWOODI	51.2	56.3	57.9	59.8	62.6	66.5	69.0	72.1	75.2	78.4
NYCITY	51.9	56.9	58.6	60.6	63.4	67.3	69.9	73.1	76.2	79.6
LONGISLA	54.4	59.9	61.7	63.9	66.9	71.0	73.9	77.3	80.6	84.3
IESO	37.9	41.7	42.8	44.6	46.5	48.3	50.0	51.7	53.5	55.5
PJM	43.6	50.3	52.1	54.9	57.6	62.4	64.7	67.4	70.0	72.8
NE	48.8	54.0	55.7	57.5	60.2	63.1	65.6	68.3	71.0	73.9

Projected SO₂ Emissions (Tons)

SOx Emissions (Tons)	2011	2012	2013	2014	2015	2016	2017	2018	2019	2020
WEST	20,616.7	16,098.4	15,502.4	14,119.5	13,051.5	13,627.4	13,725.9	13,779.0	13,741.1	13,418.4
GENESSEE	0.4	0.4	0.4	0.4	0.4	0.4	0.4	0.4	0.4	0.4
CENTRAL	1,357.1	235.9	247.0	220.4	200.4	226.7	244.6	279.0	302.7	318.9
NORTH	353.7	388.8	414.8	412.3	445.7	559.8	577.3	592.9	600.2	554.0
MOHAWKVA	36.9	3.3	3.3	8.2	8.1	3.3	3.3	3.2	3.2	8.1
CAPITAL	66.2	71.6	71.4	72.8	72.2	73.5	73.7	74.0	74.1	74.4
HUDSONVA	11,314.5	6,045.8	5,839.7	5,054.3	4,776.5	5,543.1	6,142.1	7,254.1	7,765.3	8,235.7
MILLWOOD	12.2	12.3	12.2	12.2	12.2	12.3	12.2	12.2	12.2	12.3
DUNWOODI	-	-	-	-	-	-	-	-	-	-
NYCITY	233.8	290.9	289.3	293.5	292.3	319.1	315.0	307.2	313.6	313.4
LONGISLA	5,825.3	5,914.3	5,927.7	5,878.2	5,848.5	6,407.9	6,355.3	6,426.1	6,509.1	6,589.7
Total NYCA	39,817	29,062	28,308	26,072	24,708	26,773	27,450	28,728	29,322	29,525

Projected SO₂ Emission Costs (\$M)

SOx Emission Costs (\$M)	2011	2012	2013	2014	2015	2016	2017	2018	2019	2020
WEST	2.06	4.83	4.77	4.45	4.22	4.51	4.66	4.79	4.90	4.90
GENESSEE	0.00	0.00	0.00	0.00	0.00	0.00	0.00	0.00	0.00	0.00
CENTRAL	0.14	0.07	0.08	0.07	0.06	0.08	0.08	0.10	0.11	0.12
NORTH	0.04	0.12	0.13	0.13	0.14	0.19	0.20	0.21	0.21	0.20
MOHAWKVA	0.00	0.00	0.00	0.00	0.00	0.00	0.00	0.00	0.00	0.00
CAPITAL	0.01	0.02	0.02	0.02	0.02	0.02	0.03	0.03	0.03	0.03
HUDSONVA	1.13	1.81	1.80	1.59	1.54	1.84	2.08	2.52	2.77	3.01
MILLWOOD	0.00	0.00	0.00	0.00	0.00	0.00	0.00	0.00	0.00	0.00
DUNWOODI	-	-	-	-	-	-	-	-	-	-
NYCITY	0.02	0.09	0.09	0.09	0.09	0.11	0.11	0.11	0.11	0.11
LONGISLA	0.58	1.77	1.82	1.85	1.89	2.12	2.16	2.24	2.32	2.41
Total NYCA	3.98	8.72	8.70	8.22	7.98	8.87	9.32	9.99	10.46	10.79

Projected NOx Emissions (Tons)

NOx Emissions (Tons)	2011	2012	2013	2014	2015	2016	2017	2018	2019	2020
WEST	10,130	9,130	8,974	8,646	8,108	8,134	8,225	8,376	8,347	8,264
GENESSEE	6	7	6	7	7	6	6	6	6	6
CENTRAL	2,348	1,418	1,437	1,411	1,360	1,436	1,473	1,541	1,592	1,612
NORTH	393	396	396	400	402	409	408	407	405	405
MOHAWKVA	227	228	226	229	228	227	225	223	222	222
CAPITAL	920	966	961	972	942	931	928	926	927	926
HUDSONVA	3,635	2,109	2,003	1,795	1,720	1,983	2,197	2,552	2,728	2,919
MILLWOOD	1,046	1,049	1,046	1,046	1,046	1,049	1,046	1,046	1,046	1,050
DUNWOODI	-	-	-	-	-	-	-	-	-	-
NYCITY	2,359	2,545	2,483	2,518	2,521	2,799	2,797	2,753	2,799	2,803
LONGISLA	5,687	5,743	5,764	5,738	5,738	6,021	5,996	6,034	6,089	6,127
Total NYCA	26,753	23,591	23,299	22,762	22,072	22,995	23,302	23,864	24,160	24,334

Projected NOx Emission Costs (\$M)

NOx Emission Costs (\$M)	2011	2012	2013	2014	2015	2016	2017	2018	2019	2020
WEST	6.1	7.3	9.9	13.8	13.0	13.0	13.2	13.4	13.5	13.7
GENESSEE	0.0	0.0	0.0	0.0	0.0	0.0	0.0	0.0	0.0	0.0
CENTRAL	1.4	1.1	1.6	2.3	2.2	2.3	2.4	2.5	2.6	2.7
NORTH	0.2	0.3	0.4	0.6	0.6	0.7	0.7	0.7	0.7	0.7
MOHAWKVA	0.1	0.2	0.2	0.4	0.4	0.4	0.4	0.4	0.4	0.4
CAPITAL	0.6	0.8	1.1	1.6	1.5	1.5	1.5	1.5	1.5	1.5
HUDSONVA	2.2	1.7	2.2	2.9	2.8	3.2	3.5	4.1	4.4	4.8
MILLWOOD	0.6	0.8	1.2	1.7	1.7	1.7	1.7	1.7	1.7	1.7
DUNWOODI	-	-	-	-	-	-	-	-	-	-
NYCITY	1.4	2.0	2.7	4.0	4.0	4.5	4.5	4.4	4.5	4.6
LONGISLA	3.4	4.6	6.3	9.2	9.2	9.6	9.6	9.7	9.8	10.1
Total NYCA	16	19	26	36	35	37	37	38	39	40

Projected CO₂ Emissions (1,000 Tons)

CO ₂ Emissions (1000 Tons)	2011	2012	2013	2014	2015	2016	2017	2018	2019	2020
WEST	10,464	9,090	8,897	8,452	7,832	7,919	8,026	8,190	8,167	8,057
GENESSEE	3	5	4	5	5	3	3	3	2	3
CENTRAL	3,830	3,342	3,353	3,450	3,383	3,526	3,546	3,570	3,600	3,596
NORTH	112	121	118	147	153	172	165	152	139	146
MOHAWKVA	37	30	28	32	30	29	27	25	23	24
CAPITAL	7,551	8,148	8,134	8,263	8,232	8,305	8,318	8,350	8,349	8,385
HUDSONVA	2,570	1,440	1,377	1,223	1,164	1,340	1,484	1,736	1,860	1,982
MILLWOOD	-	-	-	-	-	-	-	-	-	-
DUNWOODI	-	-	-	-	-	-	-	-	-	-
NYCITY	11,710	12,986	12,830	12,996	13,035	14,016	13,999	13,873	14,016	14,060
LONGISLA	4,479	4,564	4,612	4,584	4,598	4,939	4,923	4,963	5,041	5,062
Total NYCA	40,758	39,725	39,353	39,153	38,431	40,251	40,490	40,861	41,198	41,314

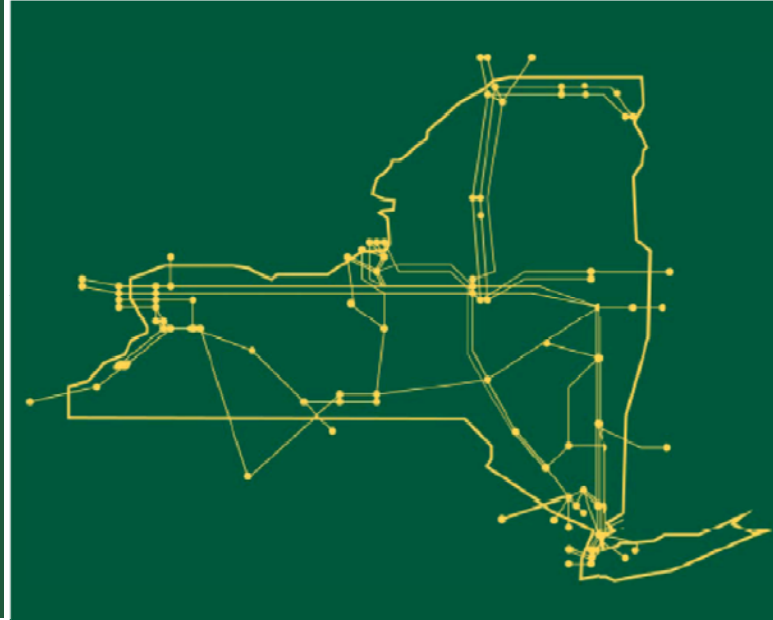
Projected CO₂ Emission Costs (\$M)

CO ₂ Emission Costs (\$M)	2011	2012	2013	2014	2015	2016	2017	2018	2019	2020
WEST	22.4	90.9	109.0	122.6	131.2	150.5	164.0	179.9	192.7	204.4
GENESSEE	0.0	0.0	0.1	0.1	0.1	0.1	0.1	0.1	0.0	0.1
CENTRAL	8.2	33.4	41.1	50.0	56.7	67.0	72.4	78.4	85.0	91.2
NORTH	0.2	1.2	1.4	2.1	2.6	3.3	3.4	3.3	3.3	3.7
MOHAWKVA	0.1	0.3	0.3	0.5	0.5	0.6	0.6	0.5	0.5	0.6
CAPITAL	16.2	81.5	99.6	119.8	137.9	157.8	169.9	183.4	197.0	212.7
HUDSONVA	5.5	14.4	16.9	17.7	19.5	25.5	30.3	38.1	43.9	50.3
MILLWOOD	-	-	-	-	-	-	-	-	-	-
DUNWOODI	-	-	-	-	-	-	-	-	-	-
NYCITY	25.1	129.9	157.2	188.4	218.3	266.3	286.0	304.6	330.8	356.7
LONGISLA	9.6	45.6	56.5	66.5	77.0	93.8	100.6	109.0	119.0	128.4
Total NYCA	87	397	482	568	644	765	827	897	972	1,048

Projected Load Payments Loss Component (\$M)

Loss Costs (\$M)	2011	2012	2013	2014	2015	2016	2017	2018	2019	2020
WEST	(39)	(35)	(35)	(35)	(35)	(44)	(46)	(48)	(50)	(52)
GENESSEE	(9)	(9)	(9)	(8)	(9)	(12)	(12)	(13)	(13)	(14)
CENTRAL	5	8	9	10	10	9	9	9	10	10
NORTH	(2)	(1)	(1)	(1)	(1)	(2)	(2)	(1)	(1)	(1)
MOHAWKVA	10	12	12	13	13	14	14	14	15	16
CAPITAL	21	22	22	23	25	28	29	29	31	32
HUDSONVA	38	42	43	45	47	52	54	57	59	62
MILLWOOD	12	13	14	14	15	17	18	18	19	21
DUNWOODI	26	28	29	30	31	35	36	38	40	42
NYCITY	246	263	269	280	290	327	340	359	379	403
LONGISLA	110	119	123	129	135	151	158	167	177	189
Total NYCA	418	462	476	500	523	575	599	631	665	707

The New York Independent System Operator (NYISO) is a not-for-profit corporation responsible for operating the state's bulk electricity grid, administering New York's competitive wholesale electricity markets, conducting comprehensive long-term planning for the state's electric power system, and advancing the technological infrastructure of the electric system serving the Empire State.



www.nyiso.com