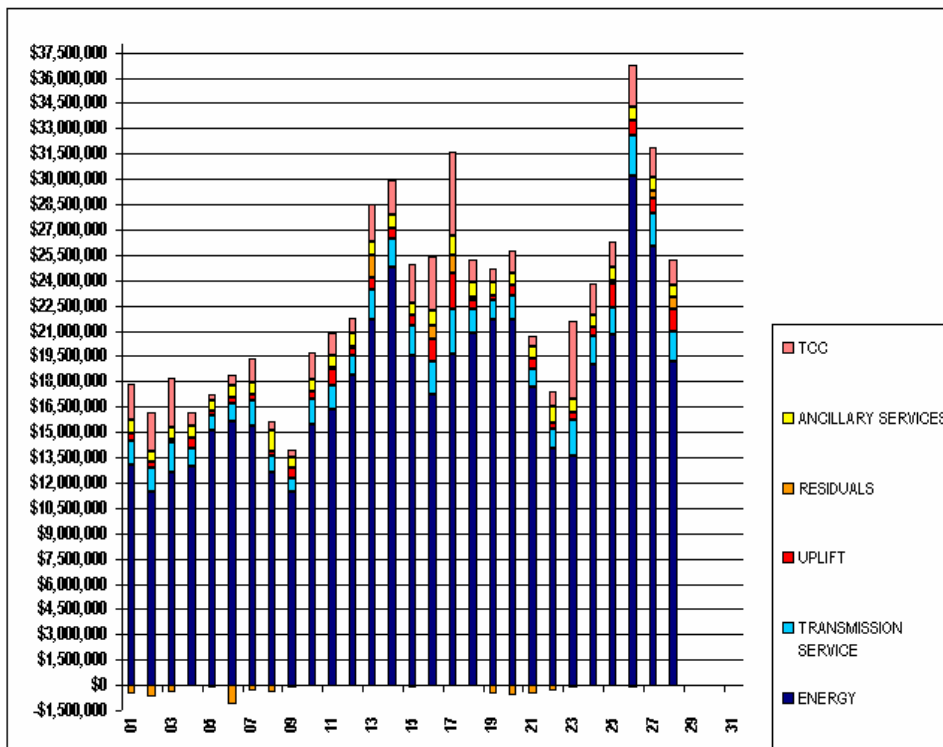


SETTLEMENTS REPORT
FEBRUARY 2003 CLOSEOUT SETTLEMENT
MARCH 6, 2006

4-MONTH SETTLEMENT ADJUSTMENT MARKET COSTS ANALYSIS

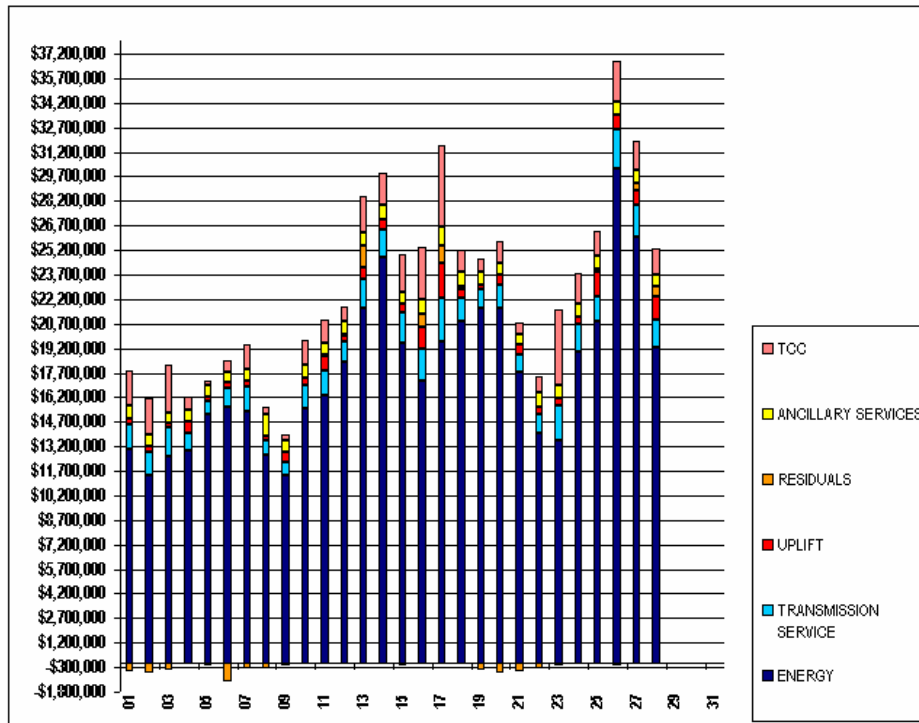
	MONDAY	TUESDAY	WEDNESDAY	THURSDAY	FRIDAY	SATURDAY	SUNDAY
						1	2
ENERGY						\$13,073,476.57	\$11,441,112.26
TRANSMISSION SERVICE						\$1,436,309.07	\$1,400,700.31
UPLIFT						\$431,777.57	\$421,896.55
RESIDUALS						(\$532,953.98)	(\$674,337.20)
ANCILLARY SERVICES						\$802,804.32	\$623,975.42
TCC						\$2,067,912.56	\$2,245,667.87
	3	4	5	6	7	8	9
ENERGY	\$12,571,261.95	\$12,944,413.82	\$15,132,163.62	\$15,604,528.31	\$15,365,562.09	\$12,657,054.94	\$11,464,861.31
TRANSMISSION SERVICE	\$1,805,103.84	\$1,091,559.93	\$870,823.61	\$1,129,002.05	\$1,510,063.38	\$914,611.03	\$787,942.21
UPLIFT	\$223,871.40	\$638,084.87	\$235,785.03	\$356,305.58	\$369,806.38	\$309,321.10	\$628,302.84
RESIDUALS	(\$426,636.06)	\$10,182.66	(\$185,741.30)	(\$1,185,639.56)	(\$338,842.49)	(\$417,628.08)	(\$211,887.38)
ANCILLARY SERVICES	\$685,946.60	\$706,478.26	\$660,924.38	\$679,024.92	\$700,870.10	\$1,234,922.16	\$662,884.93
TCC	\$2,938,262.30	\$789,477.51	\$296,698.40	\$633,456.78	\$1,426,133.75	\$475,352.37	\$383,588.77
	10	11	12	13	14	15	16
ENERGY	\$15,493,435.60	\$16,309,490.71	\$18,351,759.46	\$21,676,844.18	\$24,734,433.04	\$19,523,222.40	\$17,239,991.85
TRANSMISSION SERVICE	\$1,466,284.82	\$1,488,017.33	\$1,219,929.27	\$1,742,370.63	\$1,736,446.51	\$1,823,769.90	\$1,953,656.43
UPLIFT	\$446,538.36	\$901,560.59	\$403,612.93	\$768,360.70	\$634,070.38	\$586,211.20	\$1,307,848.39
RESIDUALS	(\$70,765.26)	\$118,367.93	\$113,127.16	\$1,298,053.10	(\$3,475.68)	(\$181,281.86)	\$841,263.66
ANCILLARY SERVICES	\$731,301.32	\$685,610.91	\$737,619.43	\$835,225.94	\$811,970.83	\$700,190.48	\$857,141.55
TCC	\$1,547,688.54	\$1,382,246.19	\$917,473.72	\$2,182,114.06	\$1,994,885.24	\$2,319,889.62	\$3,198,359.56
	17	18	19	20	21	22	23
ENERGY	\$19,651,888.65	\$20,835,193.06	\$21,629,700.20	\$21,653,830.01	\$17,713,110.88	\$14,040,585.39	\$13,611,871.85
TRANSMISSION SERVICE	\$2,602,071.47	\$1,435,328.38	\$1,186,133.51	\$1,412,146.73	\$1,065,955.09	\$1,126,332.75	\$2,082,292.74
UPLIFT	\$2,169,584.25	\$534,563.40	\$259,088.80	\$609,876.63	\$622,126.83	\$418,072.03	\$473,281.48
RESIDUALS	\$1,077,873.88	\$171,042.42	(\$484,651.58)	(\$645,398.03)	(\$536,318.27)	(\$338,146.56)	(\$163,387.93)
ANCILLARY SERVICES	\$1,162,103.80	\$877,746.40	\$793,858.95	\$707,777.29	\$645,175.48	\$803,137.28	\$796,911.17
TCC	\$4,964,184.08	\$1,354,074.12	\$805,499.66	\$1,333,497.36	\$661,157.07	\$941,635.43	\$4,634,540.95
	24	25	26	27	28		
ENERGY	\$18,993,608.51	\$20,820,068.14	\$30,160,458.29	\$26,031,269.19	\$19,215,147.26		
TRANSMISSION SERVICE	\$1,693,560.40	\$1,584,382.51	\$2,383,066.77	\$1,949,863.67	\$1,700,611.83		
UPLIFT	\$499,107.81	\$1,424,578.21	\$933,888.72	\$852,143.90	\$1,395,516.50		
RESIDUALS	(\$87,465.00)	\$162,385.30	(\$169,319.56)	\$471,377.19	\$696,707.65		
ANCILLARY SERVICES	\$718,492.96	\$773,704.19	\$765,322.91	\$786,124.04	\$703,095.44		
TCC	\$1,936,234.79	\$1,486,430.51	\$2,500,498.68	\$1,756,325.21	\$1,538,026.80		



SETTLEMENTS REPORT
FEBRUARY 2003 CLOSEOUT SETTLEMENT
MARCH 6, 2006

12-MONTH CLOSEOUT SETTLEMENT MARKET COSTS ANALYSIS

	MONDAY	TUESDAY	WEDNESDAY	THURSDAY	FRIDAY	SATURDAY	SUNDAY
						1	2
ENERGY						\$13,073,476.79	\$11,441,112.47
TRANSMISSION SERVICE						\$1,430,727.98	\$1,393,774.76
UPLIFT						\$418,944.88	\$421,468.08
RESIDUALS						(\$532,629.97)	(\$674,057.21)
ANCILLARY SERVICES						\$822,466.09	\$627,805.81
TCC						\$2,068,667.12	\$2,246,805.47
	3	4	5	6	7	8	9
ENERGY	\$12,571,262.40	\$12,944,413.84	\$15,132,164.02	\$15,604,528.14	\$15,365,562.16	\$12,657,055.03	\$11,464,860.28
TRANSMISSION SERVICE	\$1,794,158.84	\$1,091,274.45	\$869,777.21	\$1,127,516.88	\$1,509,968.55	\$914,750.61	\$787,869.50
UPLIFT	\$226,598.82	\$657,149.95	\$245,518.20	\$351,219.62	\$369,011.22	\$305,227.18	\$608,225.97
RESIDUALS	(\$426,476.75)	\$40,021.19	(\$185,640.07)	(\$1,184,795.63)	(\$338,823.49)	(\$417,746.72)	(\$512,309.06)
ANCILLARY SERVICES	\$687,726.12	\$722,148.23	\$685,299.39	\$699,428.74	\$721,974.51	\$1,259,050.63	\$683,399.15
TCC	\$2,940,041.90	\$788,956.53	\$296,685.20	\$633,445.74	\$1,426,013.51	\$475,349.73	\$383,588.77
	10	11	12	13	14	15	16
ENERGY	\$15,493,436.14	\$16,309,488.06	\$18,351,760.82	\$21,676,844.04	\$24,734,429.69	\$19,523,221.54	\$17,239,993.07
TRANSMISSION SERVICE	\$1,465,242.86	\$1,487,399.75	\$1,219,849.51	\$1,737,838.32	\$1,729,882.62	\$1,821,775.44	\$1,953,472.55
UPLIFT	\$457,430.36	\$904,057.29	\$409,562.32	\$743,100.12	\$636,441.86	\$583,698.17	\$1,290,419.52
RESIDUALS	(\$70,754.42)	\$125,622.22	\$113,133.77	\$1,300,993.98	(\$2,364.07)	(\$180,526.07)	\$842,700.31
ANCILLARY SERVICES	\$738,105.99	\$695,527.67	\$754,236.57	\$841,172.19	\$817,825.77	\$700,730.19	\$877,447.27
TCC	\$1,547,566.62	\$1,382,149.47	\$917,424.52	\$2,182,773.58	\$1,995,533.96	\$2,319,682.98	\$3,198,139.72
	17	18	19	20	21	22	23
ENERGY	\$19,651,889.13	\$20,835,192.41	\$21,629,700.94	\$21,653,829.36	\$17,713,108.56	\$14,040,585.99	\$13,611,871.48
TRANSMISSION SERVICE	\$2,600,027.55	\$1,435,213.28	\$1,185,978.64	\$1,412,008.95	\$1,065,902.20	\$1,122,477.94	\$2,065,426.94
UPLIFT	\$2,116,776.08	\$519,560.78	\$240,808.23	\$608,887.52	\$614,973.21	\$418,340.60	\$454,934.28
RESIDUALS	\$1,077,216.90	\$172,035.41	(\$484,671.63)	(\$645,032.56)	(\$536,263.41)	(\$337,894.08)	(\$161,563.87)
ANCILLARY SERVICES	\$1,170,495.00	\$904,113.12	\$800,752.34	\$718,213.90	\$670,682.15	\$917,859.54	\$818,070.80
TCC	\$4,963,707.40	\$1,353,988.44	\$805,415.66	\$1,333,381.44	\$661,108.83	\$942,163.16	\$4,637,325.91
	24	25	26	27	28		
ENERGY	\$18,993,608.39	\$20,820,067.76	\$30,160,458.77	\$26,031,269.33	\$19,215,147.77		
TRANSMISSION SERVICE	\$1,693,501.54	\$1,583,404.94	\$2,382,202.84	\$1,949,583.15	\$1,700,554.87		
UPLIFT	\$470,163.38	\$1,455,208.22	\$928,121.64	\$837,392.47	\$1,412,431.43		
RESIDUALS	(\$87,735.74)	\$163,695.15	(\$168,404.29)	\$473,049.17	\$701,645.94		
ANCILLARY SERVICES	\$727,896.69	\$820,792.27	\$771,578.48	\$787,667.65	\$702,087.74		
TCC	\$1,936,161.83	\$1,486,420.43	\$2,500,498.68	\$1,756,325.21	\$1,538,024.64		

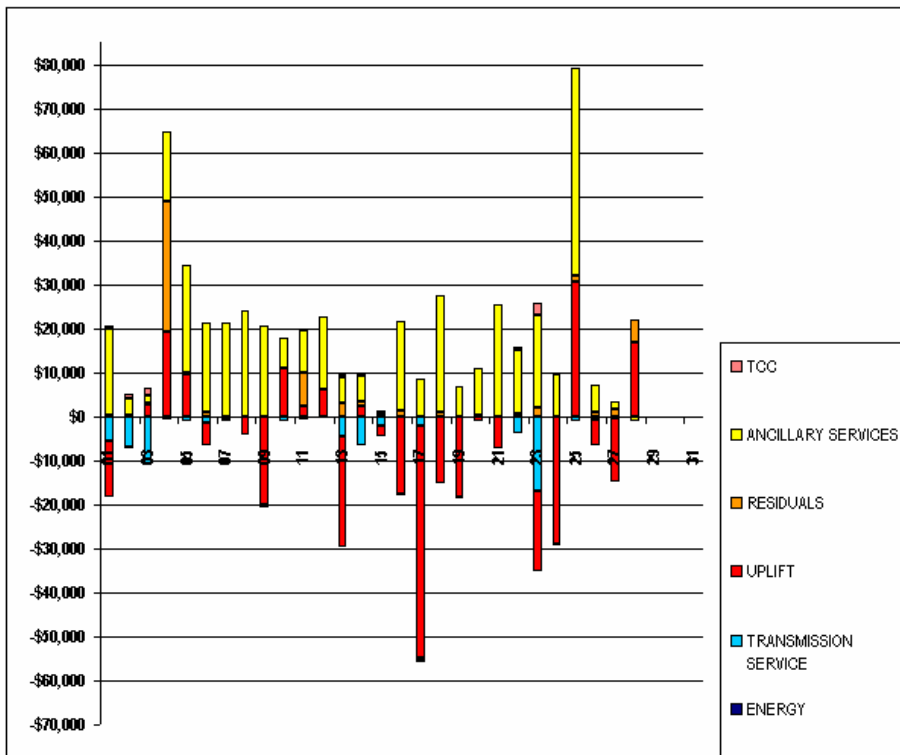


FOR DISCUSSION PURPOSES ONLY

SETTLEMENTS REPORT
FEBRUARY 2003 CLOSEOUT SETTLEMENT
MARCH 6, 2006

CLOSEOUT SETTLEMENT MARKET COSTS DELTA ANALYSIS

	MONDAY	TUESDAY	WEDNESDAY	THURSDAY	FRIDAY	SATURDAY	SUNDAY
						1	2
ENERGY						\$0.22	\$0.21
TRANSMISSION SERVICE						(\$5,581.09)	(\$6,925.55)
UPLIFT						(\$12,832.69)	(\$408.47)
RESIDUALS						\$324.01	\$279.99
ANCILLARY SERVICES						\$19,661.77	\$3,830.39
TCC						\$754.56	\$1,137.60
	3	4	5	6	7	8	9
ENERGY	\$0.45	\$0.02	\$0.40	(\$0.17)	\$0.07	\$0.09	(\$1.03)
TRANSMISSION SERVICE	(\$10,945.00)	(\$265.48)	(\$1,046.40)	(\$1,485.17)	(\$94.83)	(\$60.42)	(\$72.71)
UPLIFT	\$2,727.42	\$19,065.08	\$9,733.17	(\$5,085.96)	(\$795.16)	(\$4,093.92)	(\$20,076.87)
RESIDUALS	\$159.31	\$29,836.53	\$101.23	\$843.93	\$19.00	(\$118.64)	(\$421.68)
ANCILLARY SERVICES	\$1,779.52	\$15,669.97	\$24,375.01	\$20,403.82	\$21,104.41	\$24,126.47	\$20,514.22
TCC	\$1,779.60	(\$520.98)	(\$13.20)	(\$11.04)	(\$120.24)	(\$2.64)	\$0.00
	10	11	12	13	14	15	16
ENERGY	\$0.54	(\$2.65)	\$1.36	(\$0.14)	(\$3.35)	(\$0.86)	\$1.22
TRANSMISSION SERVICE	(\$1,041.96)	(\$617.58)	(\$79.76)	(\$4,532.31)	(\$6,563.89)	(\$1,994.46)	(\$183.88)
UPLIFT	\$10,892.00	\$2,496.70	\$5,949.39	(\$25,260.58)	\$2,371.48	(\$2,513.03)	(\$17,428.87)
RESIDUALS	\$10.84	\$7,254.29	\$6.61	\$2,940.88	\$1,111.61	\$755.79	\$1,436.65
ANCILLARY SERVICES	\$6,804.67	\$9,916.76	\$16,617.14	\$5,946.25	\$5,854.94	\$539.71	\$20,305.72
TCC	(\$121.92)	(\$96.72)	(\$49.20)	\$659.52	\$648.72	(\$206.64)	(\$219.84)
	17	18	19	20	21	22	23
ENERGY	\$0.48	(\$0.65)	\$0.74	(\$0.65)	(\$2.32)	\$0.60	(\$0.37)
TRANSMISSION SERVICE	(\$2,043.92)	(\$115.10)	(\$154.87)	(\$137.78)	(\$52.89)	(\$3,854.81)	(\$16,865.80)
UPLIFT	(\$52,808.17)	(\$15,002.62)	(\$18,280.57)	(\$989.11)	(\$7,153.62)	\$268.57	(\$18,347.20)
RESIDUALS	(\$656.98)	\$992.99	(\$20.05)	\$365.47	\$54.86	\$252.48	\$1,824.06
ANCILLARY SERVICES	\$8,391.20	\$26,366.72	\$6,893.39	\$10,436.61	\$25,506.67	\$14,722.26	\$21,159.63
TCC	(\$476.68)	(\$85.68)	(\$84.00)	(\$115.92)	(\$48.24)	\$527.73	\$2,784.96
	24	25	26	27	28		
ENERGY	(\$0.12)	(\$0.38)	\$0.48	\$0.14	\$0.51		
TRANSMISSION SERVICE	(\$58.86)	(\$977.57)	(\$863.93)	(\$280.52)	(\$56.96)		
UPLIFT	(\$28,944.43)	\$30,630.01	(\$5,767.08)	(\$14,751.43)	\$16,914.93		
RESIDUALS	(\$270.74)	\$1,309.85	\$915.27	\$1,671.98	\$4,938.29		
ANCILLARY SERVICES	\$9,403.73	\$47,088.08	\$6,255.57	\$1,543.61	(\$1,007.70)		
TCC	(\$72.96)	(\$10.08)	\$0.00	\$0.00	(\$2.16)		

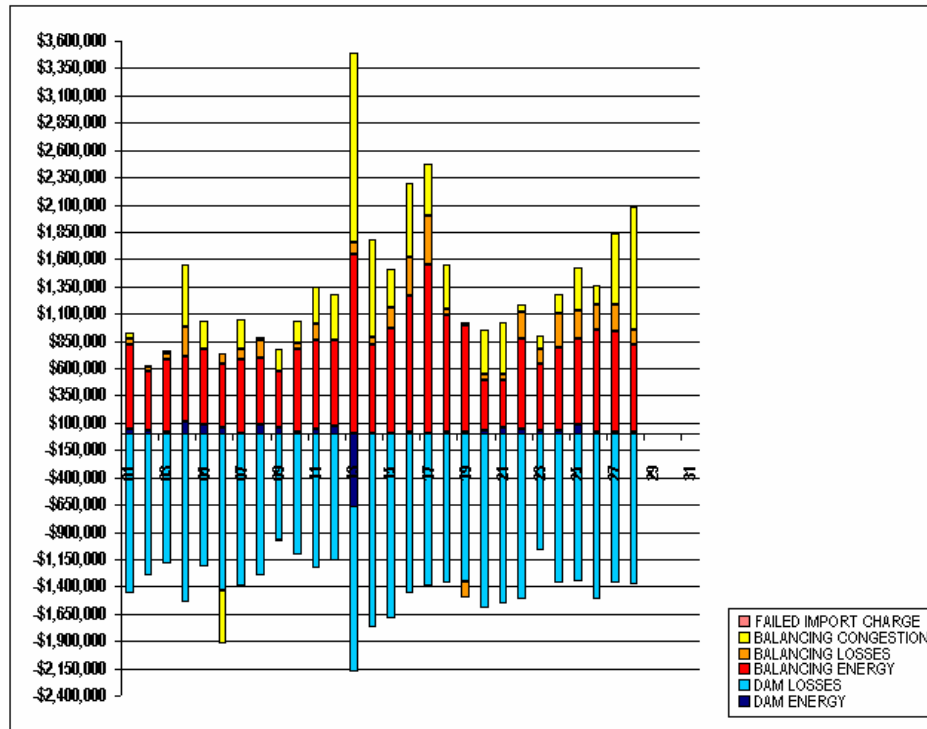


FOR DISCUSSION PURPOSES ONLY

SETTLEMENTS REPORT
FEBRUARY 2003 CLOSEOUT SETTLEMENT
MARCH 6, 2006

4-MONTH SETTLEMENT ADJUSTMENT MARKET RESIDUALS ANALYSIS

	MONDAY	TUESDAY	WEDNESDAY	THURSDAY	FRIDAY	SATURDAY	SUNDAY
						1	2
DAM ENERGY						\$38,131.73	\$29,895.16
DAM LOSSES						(\$1,457,233.98)	(\$1,296,213.95)
BALANCING ENERGY						\$783,381.88	\$538,705.60
BALANCING LOSSES						\$45,378.41	\$45,256.04
BALANCING CONGESTION						\$57,387.98	\$8,019.95
FAILED IMPORT CHARGE						\$0.00	\$0.00
	3	4	5	6	7	8	9
DAM ENERGY	\$12,039.21	\$109,586.18	\$79,912.84	\$61,759.67	\$2,668.73	\$83,831.32	\$51,471.60
DAM LOSSES	(\$1,189,628.60)	(\$1,539,887.65)	(\$1,221,334.04)	(\$1,434,179.84)	(\$1,390,000.16)	(\$1,300,745.16)	(\$868,095.06)
BALANCING ENERGY	\$671,607.85	\$593,782.91	\$691,614.02	\$583,416.61	\$674,312.12	\$604,928.45	\$524,135.09
BALANCING LOSSES	\$49,102.27	\$277,459.46	\$8,034.61	\$87,634.17	\$104,986.23	\$170,396.96	(\$17,816.67)
BALANCING CONGESTION	\$30,243.21	\$569,241.76	\$255,031.27	(\$484,270.17)	\$269,190.59	\$23,960.35	\$198,417.66
FAILED IMPORT CHARGE	\$0.00	\$0.00	\$0.00	\$0.00	\$0.00	\$0.00	\$0.00
	10	11	12	13	14	15	16
DAM ENERGY	\$21,331.58	\$42,965.50	\$77,127.18	(\$664,624.54)	\$2,337.64	\$752.97	\$13,536.22
DAM LOSSES	(\$1,105,608.60)	(\$1,234,406.04)	(\$1,161,290.72)	(\$1,522,524.90)	(\$1,779,060.90)	(\$1,693,092.30)	(\$1,456,611.90)
BALANCING ENERGY	\$761,879.85	\$816,823.83	\$776,322.68	\$1,649,843.51	\$808,966.12	\$965,908.28	\$1,250,355.23
BALANCING LOSSES	\$53,678.61	\$150,008.79	\$3,145.08	\$102,320.43	\$68,341.38	\$187,054.43	\$352,213.92
BALANCING CONGESTION	\$197,953.30	\$342,975.85	\$417,822.94	\$1,733,038.60	\$895,940.08	\$358,094.76	\$681,770.19
FAILED IMPORT CHARGE	\$0.00	\$0.00	\$0.00	\$0.00	\$0.00	\$0.00	\$0.00
	17	18	19	20	21	22	23
DAM ENERGY	\$7,006.28	\$21,555.09	\$22,030.91	\$30,366.52	\$57,330.03	\$44,833.06	\$26,689.64
DAM LOSSES	(\$1,398,716.73)	(\$1,372,904.43)	(\$1,357,375.21)	(\$1,600,454.61)	(\$1,559,037.74)	(\$1,523,164.79)	(\$1,064,395.27)
BALANCING ENERGY	\$1,545,711.70	\$1,072,512.08	\$977,800.76	\$457,779.33	\$433,977.72	\$823,379.21	\$619,300.14
BALANCING LOSSES	\$449,868.16	\$46,898.55	(\$151,154.24)	\$54,448.65	\$57,553.02	\$240,861.68	\$132,571.87
BALANCING CONGESTION	\$474,004.47	\$402,961.13	\$24,046.20	\$412,462.08	\$473,858.70	\$75,944.26	\$122,445.69
FAILED IMPORT CHARGE	\$0.00	\$0.00	\$0.00	\$0.00	\$0.00	\$0.00	\$0.00
	24	25	26	27	28		
DAM ENERGY	\$33,794.37	\$81,013.41	\$15,154.79	\$22,892.53	\$10,192.76		
DAM LOSSES	(\$1,369,863.68)	(\$1,357,581.13)	(\$1,524,218.95)	(\$1,368,781.01)	(\$1,388,444.53)		
BALANCING ENERGY	\$759,322.19	\$797,035.12	\$932,396.10	\$821,163.36	\$802,730.70		
BALANCING LOSSES	\$315,843.00	\$251,842.85	\$239,187.28	\$236,245.43	\$143,885.74		
BALANCING CONGESTION	\$173,439.12	\$390,075.05	\$168,161.22	\$659,856.88	\$1,128,342.98		
FAILED IMPORT CHARGE	\$0.00	\$0.00	\$0.00	\$0.00	\$0.00		

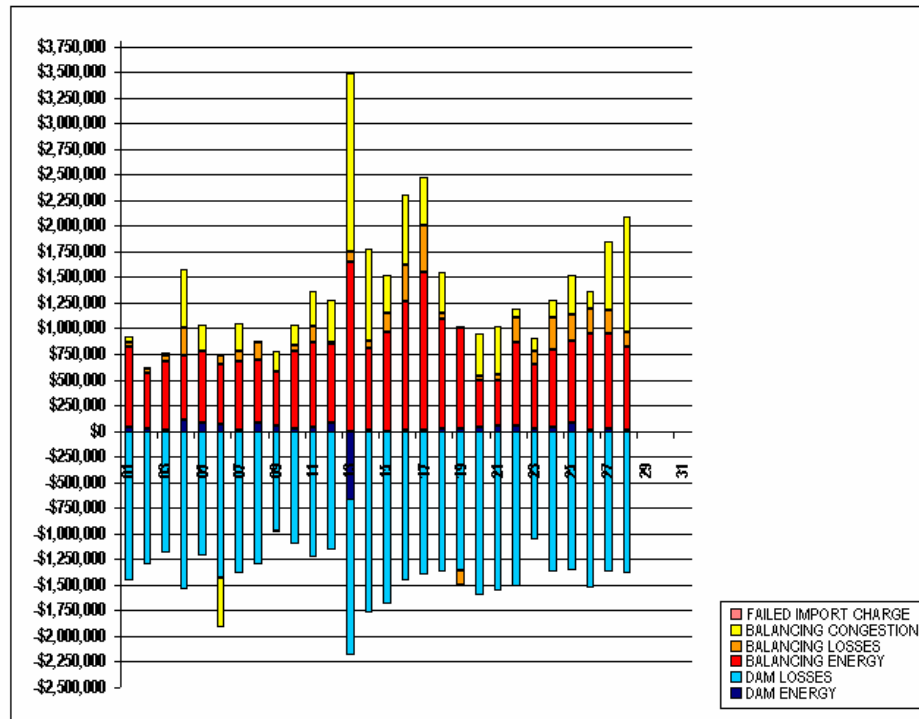


FOR DISCUSSION PURPOSES ONLY

SETTLEMENTS REPORT
FEBRUARY 2003 CLOSEOUT SETTLEMENT
MARCH 6, 2006

12-MONTH CLOSEOUT SETTLEMENT MARKET RESIDUALS ANALYSIS

	MONDAY	TUESDAY	WEDNESDAY	THURSDAY	FRIDAY	SATURDAY	SUNDAY
						1	2
DAM ENERGY						\$38,133.63	\$29,896.55
DAM LOSSES						(\$1,457,272.19)	(\$1,296,242.74)
BALANCING ENERGY						\$783,637.96	\$538,983.91
BALANCING LOSSES						\$45,404.58	\$45,283.66
BALANCING CONGESTION						\$57,466.05	\$0,021.41
FAILED IMPORT CHARGE						\$0.00	\$0.00
	3	4	5	6	7	8	9
DAM ENERGY	\$12,039.57	\$109,588.44	\$79,913.87	\$61,762.18	\$2,668.94	\$83,834.58	\$51,471.60
DAM LOSSES	(\$1,189,665.48)	(\$1,539,933.18)	(\$1,221,364.63)	(\$1,434,232.31)	(\$1,390,047.07)	(\$1,300,768.10)	(\$968,095.06)
BALANCING ENERGY	\$671,789.54	\$624,606.81	\$691,695.64	\$584,098.49	\$674,343.64	\$604,809.08	\$523,930.35
BALANCING LOSSES	\$49,113.05	\$276,374.64	\$8,056.88	\$87,672.05	\$104,998.98	\$170,407.43	(\$17,821.19)
BALANCING CONGESTION	\$30,246.57	\$569,384.48	\$255,058.17	(\$484,096.04)	\$269,212.02	\$23,970.29	\$198,205.24
FAILED IMPORT CHARGE	\$0.00	\$0.00	\$0.00	\$0.00	\$0.00	\$0.00	\$0.00
	10	11	12	13	14	15	16
DAM ENERGY	\$21,331.63	\$42,966.93	\$77,129.16	(\$664,635.22)	\$2,337.50	\$752.95	\$13,536.11
DAM LOSSES	(\$1,105,610.86)	(\$1,234,435.76)	(\$1,161,316.70)	(\$1,522,548.48)	(\$1,779,121.79)	(\$1,693,119.58)	(\$1,456,634.19)
BALANCING ENERGY	\$761,977.83	\$820,677.29	\$776,774.58	\$1,651,326.27	\$809,517.67	\$966,441.90	\$1,251,403.35
BALANCING LOSSES	\$53,696.84	\$150,300.50	\$3,199.85	\$102,421.81	\$68,386.09	\$187,090.56	\$352,246.76
BALANCING CONGESTION	\$197,850.14	\$346,113.26	\$417,346.88	\$1,734,429.60	\$896,516.46	\$358,308.10	\$682,148.28
FAILED IMPORT CHARGE	\$0.00	\$0.00	\$0.00	\$0.00	\$0.00	\$0.00	\$0.00
	17	18	19	20	21	22	23
DAM ENERGY	\$7,006.23	\$21,555.81	\$22,031.88	\$30,367.60	\$57,331.43	\$44,833.06	\$26,689.64
DAM LOSSES	(\$1,398,753.18)	(\$1,372,947.11)	(\$1,357,417.82)	(\$1,600,518.90)	(\$1,559,055.99)	(\$1,523,164.79)	(\$1,064,395.27)
BALANCING ENERGY	\$1,544,815.20	\$1,073,384.92	\$977,794.59	\$458,036.49	\$434,033.65	\$823,599.82	\$620,816.69
BALANCING LOSSES	\$449,453.58	\$46,970.83	(\$151,167.00)	\$54,473.64	\$57,557.79	\$240,893.45	\$132,740.09
BALANCING CONGESTION	\$474,695.07	\$403,070.96	\$24,086.72	\$412,608.61	\$473,869.71	\$75,944.38	\$122,584.98
FAILED IMPORT CHARGE	\$0.00	\$0.00	\$0.00	\$0.00	\$0.00	\$0.00	\$0.00
	24	25	26	27	28		
DAM ENERGY	\$33,794.81	\$81,013.82	\$15,154.77	\$22,892.83	\$10,192.94		
DAM LOSSES	(\$1,369,893.27)	(\$1,357,595.36)	(\$1,524,221.63)	(\$1,368,783.82)	(\$1,368,492.82)		
BALANCING ENERGY	\$758,839.39	\$797,708.96	\$932,913.12	\$922,359.66	\$804,347.80		
BALANCING LOSSES	\$315,867.06	\$251,940.69	\$239,281.97	\$236,350.03	\$144,062.71		
BALANCING CONGESTION	\$173,656.27	\$390,627.04	\$168,467.48	\$660,230.47	\$1,131,535.31		
FAILED IMPORT CHARGE	\$0.00	\$0.00	\$0.00	\$0.00	\$0.00		

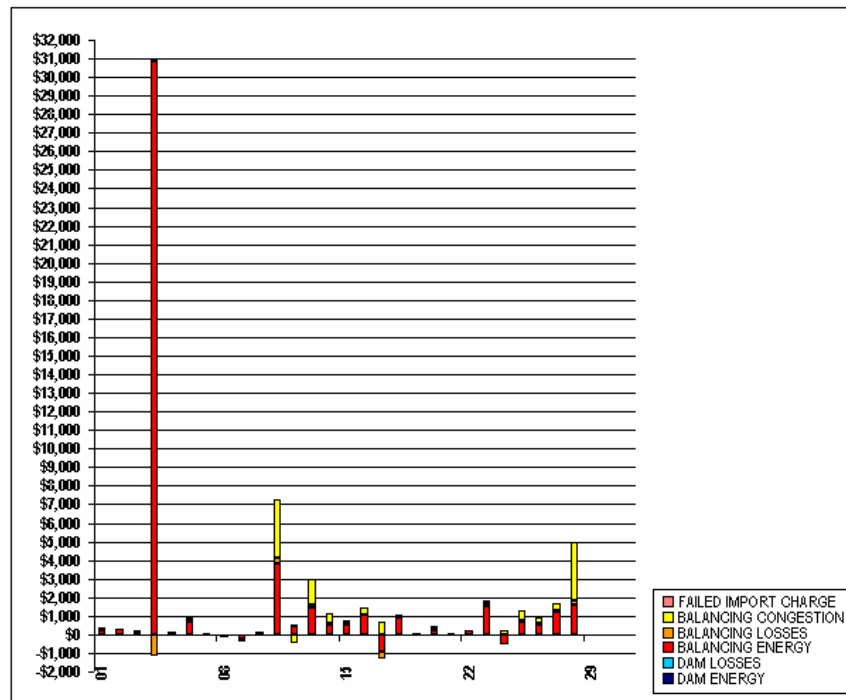


FOR DISCUSSION PURPOSES ONLY

SETTLEMENTS REPORT
FEBRUARY 2003 CLOSEOUT SETTLEMENT
MARCH 6, 2006

CLOSEOUT SETTLEMENT MARKET RESIDUALS DELTA ANALYSIS

	MONDAY	TUESDAY	WEDNESDAY	THURSDAY	FRIDAY	SATURDAY	SUNDAY
						1	2
DAM ENERGY						\$1.90	\$1.39
DAM LOSSES						(\$38.21)	(\$28.79)
BALANCING ENERGY						\$256.08	\$278.31
BALANCING LOSSES						\$26.17	\$27.62
BALANCING CONGESTION						\$78.07	\$1.46
FAILED IMPORT CHARGE						\$0.00	\$0.00
	3	4	5	6	7	8	9
DAM ENERGY	\$0.36	\$2.26	\$1.03	\$2.51	\$0.21	\$3.26	\$0.00
DAM LOSSES	(\$36.88)	(\$45.53)	(\$30.59)	(\$52.47)	(\$46.91)	(\$22.94)	\$0.00
BALANCING ENERGY	\$181.69	\$30,823.90	\$81.62	\$681.88	\$31.52	(\$119.37)	(\$204.74)
BALANCING LOSSES	\$10.78	(\$1,084.82)	\$22.27	\$37.88	\$12.75	\$10.47	(\$4.52)
BALANCING CONGESTION	\$3.36	\$142.72	\$26.90	\$174.13	\$21.43	\$9.94	(\$212.42)
FAILED IMPORT CHARGE	\$0.00	\$0.00	\$0.00	\$0.00	\$0.00	\$0.00	\$0.00
	10	11	12	13	14	15	16
DAM ENERGY	\$0.05	\$1.43	\$1.98	(\$10.68)	(\$0.14)	(\$0.02)	(\$0.11)
DAM LOSSES	(\$2.26)	(\$29.72)	(\$25.98)	(\$23.58)	(\$60.89)	(\$27.28)	(\$22.29)
BALANCING ENERGY	\$87.98	\$3,853.46	\$451.90	\$1,482.76	\$551.55	\$533.62	\$1,048.12
BALANCING LOSSES	\$18.23	\$291.71	\$54.77	\$101.38	\$44.71	\$36.13	\$32.84
BALANCING CONGESTION	(\$103.16)	\$3,137.41	(\$476.06)	\$1,391.00	\$576.38	\$213.34	\$378.09
FAILED IMPORT CHARGE	\$0.00	\$0.00	\$0.00	\$0.00	\$0.00	\$0.00	\$0.00
	17	18	19	20	21	22	23
DAM ENERGY	(\$0.05)	\$0.72	\$0.97	\$1.08	\$1.40	\$0.00	\$0.00
DAM LOSSES	(\$36.45)	(\$42.68)	(\$42.61)	(\$64.29)	(\$18.25)	\$0.00	\$0.00
BALANCING ENERGY	(\$896.50)	\$872.84	(\$6.17)	\$257.16	\$55.93	\$220.61	\$1,516.55
BALANCING LOSSES	(\$414.58)	\$72.28	(\$12.78)	\$24.99	\$4.77	\$51.77	\$168.22
BALANCING CONGESTION	\$690.60	\$89.83	\$40.52	\$146.53	\$11.01	\$0.10	\$139.29
FAILED IMPORT CHARGE	\$0.00	\$0.00	\$0.00	\$0.00	\$0.00	\$0.00	\$0.00
	24	25	26	27	28		
DAM ENERGY	\$0.44	\$0.41	(\$0.02)	\$0.30	\$0.18		
DAM LOSSES	(\$29.59)	(\$14.23)	(\$2.68)	(\$2.81)	(\$48.29)		
BALANCING ENERGY	(\$482.80)	\$673.84	\$517.02	\$1,196.30	\$1,617.10		
BALANCING LOSSES	\$24.06	\$97.84	\$94.69	\$104.60	\$176.97		
BALANCING CONGESTION	\$217.15	\$551.99	\$306.26	\$373.59	\$3,192.33		
FAILED IMPORT CHARGE	\$0.00	\$0.00	\$0.00	\$0.00	\$0.00		



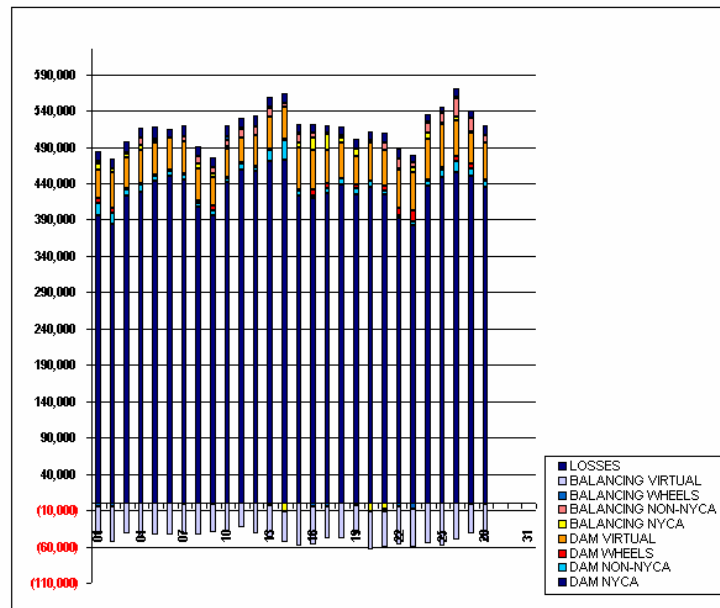
SETTLEMENTS REPORT

FEBRUARY 2003 CLOSEOUT SETTLEMENT

MARCH 6, 2006

4-MONTH SETTLEMENT ADJUSTMENT MARKET WITHDRAWALS ANALYSIS

	MONDAY	TUESDAY	WEDNESDAY	THURSDAY	FRIDAY	SATURDAY	SUNDAY
						1	2
DAM NYCA						396,532	383,149
DAM NON-NYCA						16,151	15,891
DAM WHEELS						7,526	7,800
DAM VIRTUAL						39,220	48,947
BALANCING NYCA						8,407	4,819
BALANCING NON-NYCA						2,257	200
BALANCING WHEELS						(4,728)	(4,650)
BALANCING VIRTUAL						(39,220)	(48,947)
UFE/LOSSES						14,854	12,788
	3	4	5	6	7	8	9
DAM NYCA	422,535	428,790	442,868	449,673	444,749	408,136	396,469
DAM NON-NYCA	8,960	8,806	7,759	7,831	7,731	4,152	5,388
DAM WHEELS	1,600	1,600	1,500	1,500	1,500	3,600	6,800
DAM VIRTUAL	42,384	46,800	43,084	43,351	43,350	43,923	39,001
BALANCING NYCA	5,412	6,177	2,813	(112)	(962)	6,502	5,646
BALANCING NON-NYCA	1,778	10,250	2,762	717	7,340	10,809	8,192
BALANCING WHEELS	300	463	900	0	580	0	(1,165)
BALANCING VIRTUAL	(42,384)	(46,800)	(43,084)	(43,351)	(43,350)	(43,923)	(39,001)
UFE/LOSSES	14,227	12,995	15,677	12,043	14,933	14,012	14,067
	10	11	12	13	14	15	16
DAM NYCA	442,129	459,193	456,353	471,185	472,873	423,261	419,261
DAM NON-NYCA	5,271	6,617	6,171	15,297	27,223	6,302	3,987
DAM WHEELS	1,500	1,500	1,500	1,500	1,500	1,600	7,905
DAM VIRTUAL	38,413	33,820	41,669	44,433	43,083	58,814	53,952
BALANCING NYCA	4,151	(493)	1,293	(2,505)	(10,941)	6,526	17,296
BALANCING NON-NYCA	8,637	11,716	10,829	11,203	5,181	11,137	6,596
BALANCING WHEELS	3,903	1,074	705	1,826	200	2,150	(4,205)
BALANCING VIRTUAL	(38,413)	(33,820)	(41,669)	(44,433)	(43,083)	(58,814)	(53,952)
UFE/LOSSES	15,003	13,179	14,539	12,771	13,190	12,172	12,577
	17	18	19	20	21	22	23
DAM NYCA	426,336	437,607	424,652	434,568	425,083	392,071	382,660
DAM NON-NYCA	7,224	6,368	8,712	7,990	4,884	4,153	5,152
DAM WHEELS	6,300	1,500	4,700	1,500	6,300	9,600	14,136
DAM VIRTUAL	45,190	49,103	39,452	51,160	50,042	52,511	52,683
BALANCING NYCA	22,477	6,007	9,277	(12,371)	(8,873)	2,840	7,266
BALANCING NON-NYCA	2,630	2,498	(1,474)	4,559	8,852	13,084	7,016
BALANCING WHEELS	(4,320)	400	(1,800)	0	(2,600)	(4,400)	(8,036)
BALANCING VIRTUAL	(45,190)	(49,103)	(39,452)	(51,160)	(50,042)	(52,511)	(52,683)
UFE/LOSSES	10,374	13,244	14,096	12,286	14,072	13,945	10,772
	24	25	26	27	28		
DAM NYCA	436,473	448,160	454,659	449,416	435,704		
DAM NON-NYCA	7,361	10,972	16,028	10,469	8,125		
DAM WHEELS	1,500	3,500	6,190	7,519	1,500		
DAM VIRTUAL	55,828	59,198	50,271	41,917	49,920		
BALANCING NYCA	9,163	908	4,363	1,363	(1,719)		
BALANCING NON-NYCA	13,224	14,172	24,844	18,707	11,257		
BALANCING WHEELS	1,172	748	2,799	(763)	200		
BALANCING VIRTUAL	(55,828)	(59,198)	(50,271)	(41,917)	(49,920)		
UFE/LOSSES	10,676	7,032	11,229	10,978	12,213		



FOR DISCUSSION PURPOSES ONLY

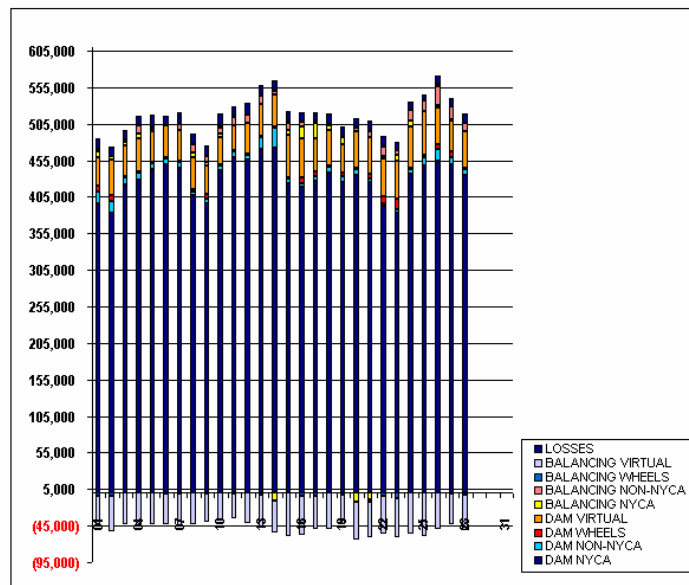
SETTLEMENTS REPORT

FEBRUARY 2003 CLOSEOUT SETTLEMENT

MARCH 6, 2006

12-MONTH CLOSEOUT SETTLEMENT MARKET WITHDRAWALS ANALYSIS

	MONDAY	TUESDAY	WEDNESDAY	THURSDAY	FRIDAY	SATURDAY	SUNDAY
						1	2
DAM NYCA						396,532	383,149
DAM NON-NYCA						16,151	15,891
DAM WHEELS						7,526	7,800
DAM VIRTUAL						39,220	48,947
BALANCING NYCA						8,211	4,623
BALANCING NON-NYCA						2,257	200
BALANCING WHEELS						(4,726)	(4,650)
BALANCING VIRTUAL						(39,220)	(48,947)
UFE/LOSSES						15,055	12,989
	3	4	5	6	7	8	9
DAM NYCA	422,535	428,790	442,868	449,673	444,749	408,136	396,469
DAM NON-NYCA	8,960	8,806	7,759	7,831	7,731	4,152	5,388
DAM WHEELS	1,600	1,600	1,500	1,500	1,500	3,600	6,800
DAM VIRTUAL	42,384	46,800	43,084	43,351	43,350	43,923	39,001
BALANCING NYCA	5,248	6,019	2,671	(264)	(1,116)	6,335	5,444
BALANCING NON-NYCA	1,778	10,250	2,762	717	7,340	10,809	8,192
BALANCING WHEELS	300	463	900	0	580	0	(1,165)
BALANCING VIRTUAL	(42,384)	(46,800)	(43,084)	(43,351)	(43,350)	(43,923)	(39,001)
UFE/LOSSES	14,396	13,848	15,819	12,203	15,086	14,177	14,266
	10	11	12	13	14	15	16
DAM NYCA	442,129	459,193	456,353	471,185	472,873	423,261	419,261
DAM NON-NYCA	5,271	8,617	6,171	15,297	27,223	6,302	3,987
DAM WHEELS	1,500	1,500	1,500	1,500	1,500	1,600	7,905
DAM VIRTUAL	38,413	33,820	41,669	44,433	43,083	58,814	53,952
BALANCING NYCA	3,964	(683)	1,072	(2,740)	(11,515)	5,961	16,786
BALANCING NON-NYCA	8,637	11,716	10,829	11,203	5,181	11,137	6,596
BALANCING WHEELS	3,903	1,074	705	1,826	200	2,150	(4,205)
BALANCING VIRTUAL	(38,413)	(33,820)	(41,669)	(44,433)	(43,083)	(58,814)	(53,952)
UFE/LOSSES	15,190	13,412	14,770	13,023	13,770	12,743	13,097
	17	18	19	20	21	22	23
DAM NYCA	426,336	437,607	424,652	434,568	425,083	392,071	382,660
DAM NON-NYCA	7,224	8,368	8,712	7,990	4,884	4,153	5,152
DAM WHEELS	6,300	1,500	4,700	1,500	6,300	9,600	14,136
DAM VIRTUAL	45,190	49,103	39,452	51,160	50,042	52,511	52,683
BALANCING NYCA	21,875	5,687	8,847	(12,754)	(9,020)	2,679	7,111
BALANCING NON-NYCA	2,630	2,498	(1,474)	4,559	8,852	13,084	7,016
BALANCING WHEELS	(4,320)	400	(1,800)	0	(2,600)	(4,400)	(8,036)
BALANCING VIRTUAL	(45,190)	(49,103)	(39,452)	(51,160)	(50,042)	(52,511)	(52,683)
UFE/LOSSES	10,980	13,574	14,526	12,674	14,221	14,108	10,939
	24	25	26	27	28		
DAM NYCA	436,473	448,160	454,659	449,416	435,704		
DAM NON-NYCA	7,361	10,972	16,028	10,469	8,125		
DAM WHEELS	1,500	3,500	6,190	7,519	1,500		
DAM VIRTUAL	55,828	59,198	50,271	41,917	49,920		
BALANCING NYCA	8,999	653	4,202	1,205	(1,877)		
BALANCING NON-NYCA	13,224	14,172	24,844	18,707	11,257		
BALANCING WHEELS	1,172	748	2,799	(763)	200		
BALANCING VIRTUAL	(55,828)	(59,198)	(50,271)	(41,917)	(49,920)		
UFE/LOSSES	10,835	7,296	11,396	11,151	12,395		

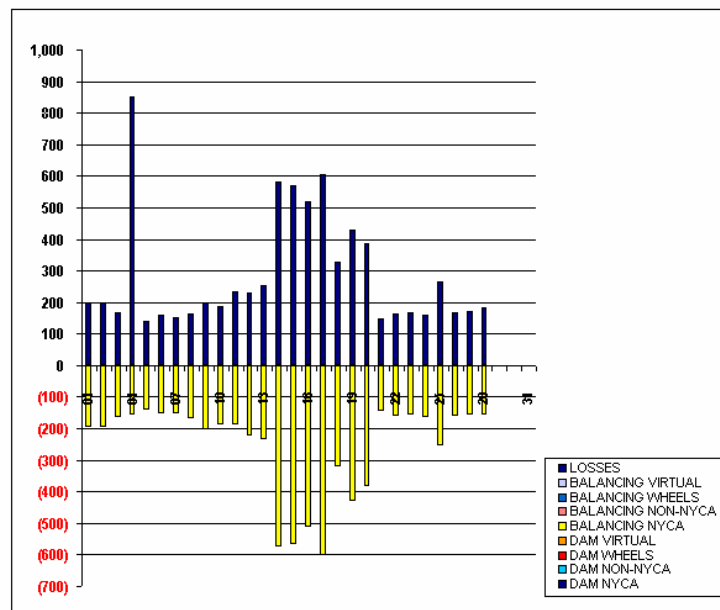


FOR DISCUSSION PURPOSES ONLY

SETTLEMENTS REPORT
FEBRUARY 2003 CLOSEOUT SETTLEMENT
MARCH 6, 2006

CLOSEOUT SETTLEMENT MARKET WITHDRAWALS DELTA ANALYSIS

	MONDAY	TUESDAY	WEDNESDAY	THURSDAY	FRIDAY	SATURDAY	SUNDAY
						1	2
DAM NYCA						0	0
DAM NON-NYCA						0	0
DAM WHEELS						0	0
DAM VIRTUAL						0	0
BALANCING NYCA						(197)	(196)
BALANCING NON-NYCA						0	0
BALANCING WHEELS						0	0
BALANCING VIRTUAL						0	0
UFE/LOSSES						201	201
	3	4	5	6	7	8	9
DAM NYCA	0	0	0	0	0	0	0
DAM NON-NYCA	0	0	0	0	0	0	0
DAM WHEELS	0	0	0	0	0	0	0
DAM VIRTUAL	0	0	0	0	0	0	0
BALANCING NYCA	(164)	(158)	(142)	(151)	(154)	(168)	(202)
BALANCING NON-NYCA	0	0	0	0	0	0	0
BALANCING WHEELS	0	0	0	0	0	0	0
BALANCING VIRTUAL	0	0	0	0	0	0	0
UFE/LOSSES	169	853	142	161	152	165	199
	10	11	12	13	14	15	16
DAM NYCA	0	0	0	0	0	0	0
DAM NON-NYCA	0	0	0	0	0	0	0
DAM WHEELS	0	0	0	0	0	0	0
DAM VIRTUAL	0	0	0	0	0	0	0
BALANCING NYCA	(187)	(190)	(222)	(235)	(573)	(565)	(511)
BALANCING NON-NYCA	0	0	0	0	0	0	0
BALANCING WHEELS	0	0	0	0	0	0	0
BALANCING VIRTUAL	0	0	0	0	0	0	0
UFE/LOSSES	187	233	231	252	580	571	520
	17	18	19	20	21	22	23
DAM NYCA	0	0	0	0	0	0	0
DAM NON-NYCA	0	0	0	0	0	0	0
DAM WHEELS	0	0	0	0	0	0	0
DAM VIRTUAL	0	0	0	0	0	0	0
BALANCING NYCA	(802)	(320)	(430)	(383)	(147)	(161)	(155)
BALANCING NON-NYCA	0	0	0	0	0	0	0
BALANCING WHEELS	0	0	0	0	0	0	0
BALANCING VIRTUAL	0	0	0	0	0	0	0
UFE/LOSSES	606	329	430	388	150	163	167
	24	25	26	27	28		
DAM NYCA	0	0	0	0	0		
DAM NON-NYCA	0	0	0	0	0		
DAM WHEELS	0	0	0	0	0		
DAM VIRTUAL	0	0	0	0	0		
BALANCING NYCA	(164)	(254)	(161)	(158)	(158)		
BALANCING NON-NYCA	0	0	0	0	0		
BALANCING WHEELS	0	0	0	0	0		
BALANCING VIRTUAL	0	0	0	0	0		
UFE/LOSSES	159	264	167	173	183		

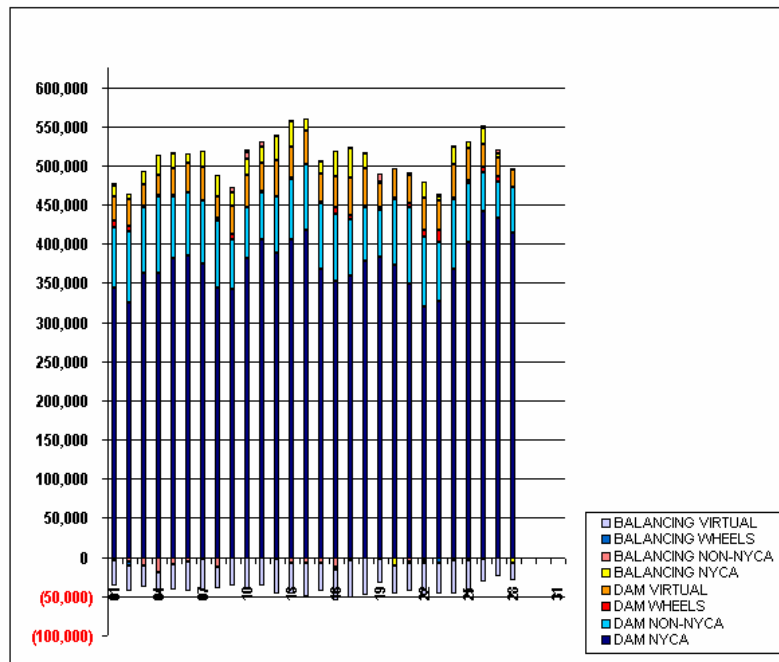


FOR DISCUSSION PURPOSES ONLY

SETTLEMENTS REPORT
FEBRUARY 2003 CLOSEOUT SETTLEMENT
MARCH 6, 2006

4-MONTH SETTLEMENT ADJUSTMENT MARKET SUPPLY ANALYSIS

	MONDAY	TUESDAY	WEDNESDAY	THURSDAY	FRIDAY	SATURDAY	SUNDAY
						1	2
DAM NYCA						344,350	324,759
DAM NON-NYCA						76,880	90,311
DAM WHEELS						7,526	7,800
DAM VIRTUAL						31,341	33,418
BALANCING NYCA						14,859	7,189
BALANCING NON-NYCA						2,113	(5,412)
BALANCING WHEELS						(4,726)	(4,650)
BALANCING VIRTUAL						(31,341)	(33,418)
	3	4	5	6	7	8	9
DAM NYCA	362,880	363,577	382,283	385,178	375,108	343,340	342,567
DAM NON-NYCA	84,276	97,009	78,642	79,696	79,512	85,966	63,021
DAM WHEELS	1,600	1,600	1,500	1,500	1,500	3,600	6,800
DAM VIRTUAL	26,933	25,717	33,889	36,886	41,263	28,172	36,257
BALANCING NYCA	16,531	24,965	19,386	11,561	21,135	26,771	16,208
BALANCING NON-NYCA	(10,925)	(18,732)	(8,482)	(6,384)	(2,414)	(12,665)	7,967
BALANCING WHEELS	300	463	900	0	580	0	(1,165)
BALANCING VIRTUAL	(26,933)	(25,717)	(33,889)	(36,886)	(41,263)	(28,172)	(36,257)
	10	11	12	13	14	15	16
DAM NYCA	362,027	404,795	388,968	406,448	418,029	367,643	351,880
DAM NON-NYCA	64,031	60,632	70,789	75,714	82,710	84,122	86,326
DAM WHEELS	1,500	1,500	1,500	1,500	1,500	1,600	7,905
DAM VIRTUAL	40,018	37,002	45,418	39,359	42,467	36,650	39,316
BALANCING NYCA	21,621	19,240	31,140	33,304	14,931	14,493	33,992
BALANCING NON-NYCA	7,512	7,345	(2,292)	(7,516)	(8,145)	(6,860)	(12,481)
BALANCING WHEELS	3,903	1,074	705	1,826	200	2,150	(4,205)
BALANCING VIRTUAL	(40,018)	(37,002)	(45,418)	(39,359)	(42,467)	(36,650)	(39,316)
	17	18	19	20	21	22	23
DAM NYCA	359,688	377,384	384,085	373,287	349,551	319,626	326,223
DAM NON-NYCA	70,933	69,892	58,461	83,764	96,635	88,965	76,556
DAM WHEELS	6,300	1,500	4,700	1,500	6,300	9,600	14,136
DAM VIRTUAL	48,183	48,067	30,520	37,090	34,697	40,946	38,172
BALANCING NYCA	37,126	18,529	1,355	(10,027)	3,450	20,904	4,939
BALANCING NON-NYCA	1,295	1,919	10,963	(42)	(5,619)	(3,402)	4,648
BALANCING WHEELS	(4,320)	400	(1,800)	0	(2,600)	(4,400)	(8,036)
BALANCING VIRTUAL	(48,183)	(48,067)	(30,520)	(37,090)	(34,697)	(40,946)	(38,172)
	24	25	26	27	28		
DAM NYCA	368,518	402,228	441,718	432,185	414,029		
DAM NON-NYCA	88,991	74,873	50,236	46,790	57,580		
DAM WHEELS	1,500	3,500	6,190	7,519	1,500		
DAM VIRTUAL	42,631	42,100	29,310	23,241	22,390		
BALANCING NYCA	22,506	7,742	20,655	6,140	(7,294)		
BALANCING NON-NYCA	(3,618)	(3,598)	(1,487)	5,418	1,265		
BALANCING WHEELS	1,172	748	2,799	(763)	200		
BALANCING VIRTUAL	(42,631)	(42,100)	(29,310)	(23,241)	(22,390)		



FOR DISCUSSION PURPOSES ONLY

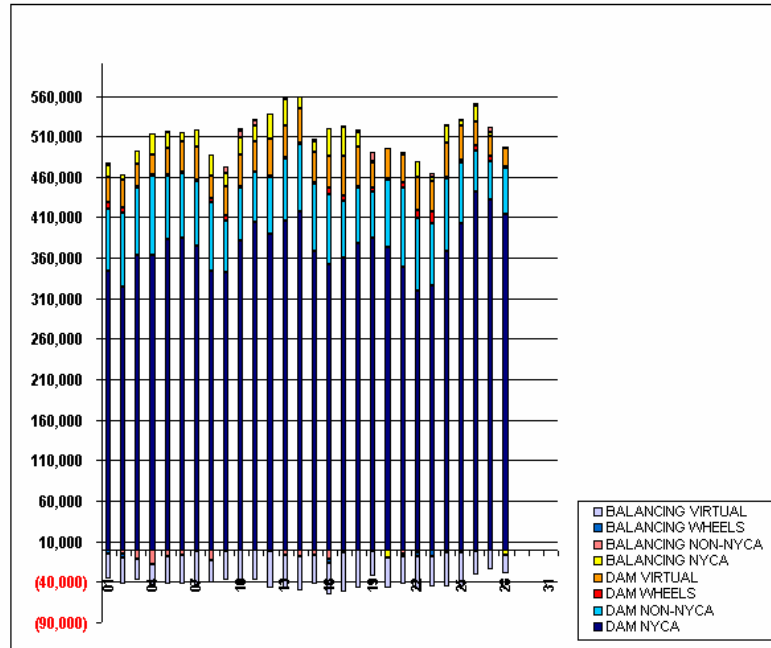
SETTLEMENTS REPORT

FEBRUARY 2003 CLOSEOUT SETTLEMENT

MARCH 6, 2006

12-MONTH CLOSEOUT SETTLEMENT MARKET SUPPLY ANALYSIS

	MONDAY	TUESDAY	WEDNESDAY	THURSDAY	FRIDAY	SATURDAY	SUNDAY
						1	2
DAM NYCA						344,350	324,759
DAM NON-NYCA						76,680	90,311
DAM WHEELS						7,526	7,800
DAM VIRTUAL						31,341	33,418
BALANCING NYCA						14,863	7,194
BALANCING NON-NYCA						2,113	(5,412)
BALANCING WHEELS						(4,726)	(4,650)
BALANCING VIRTUAL						(31,341)	(33,418)
	3	4	5	6	7	8	9
DAM NYCA	362,880	363,577	382,283	385,178	375,108	343,340	342,567
DAM NON-NYCA	84,276	97,009	78,642	79,696	79,512	85,966	63,021
DAM WHEELS	1,600	1,600	1,500	1,500	1,500	3,600	6,800
DAM VIRTUAL	26,933	25,717	33,889	36,886	41,263	28,172	36,257
BALANCING NYCA	16,536	25,660	19,387	11,570	21,134	26,768	16,204
BALANCING NON-NYCA	(10,925)	(18,732)	(8,482)	(6,384)	(2,414)	(12,665)	7,967
BALANCING WHEELS	300	463	900	0	580	0	(1,165)
BALANCING VIRTUAL	(26,933)	(25,717)	(33,889)	(36,886)	(41,263)	(28,172)	(36,257)
	10	11	12	13	14	15	16
DAM NYCA	382,027	404,795	388,968	406,448	418,029	367,643	351,880
DAM NON-NYCA	64,031	60,632	70,769	75,714	82,710	84,122	86,326
DAM WHEELS	1,500	1,500	1,500	1,500	1,500	1,600	7,905
DAM VIRTUAL	40,018	37,002	45,418	39,359	42,467	36,650	39,316
BALANCING NYCA	21,621	19,283	31,150	33,322	14,938	14,498	34,002
BALANCING NON-NYCA	7,512	7,345	(2,292)	(7,516)	(8,145)	(6,860)	(12,481)
BALANCING WHEELS	3,903	1,074	705	1,826	200	2,150	(4,205)
BALANCING VIRTUAL	(40,018)	(37,002)	(45,418)	(39,359)	(42,467)	(36,650)	(39,316)
	17	18	19	20	21	22	23
DAM NYCA	359,688	377,384	384,085	373,287	349,551	319,626	326,223
DAM NON-NYCA	70,933	69,892	58,461	83,764	96,635	88,965	76,556
DAM WHEELS	6,300	1,500	4,700	1,500	6,300	9,600	14,136
DAM VIRTUAL	48,183	48,067	30,520	37,090	34,697	40,946	38,172
BALANCING NYCA	37,129	18,538	1,355	(10,022)	3,453	20,907	4,952
BALANCING NON-NYCA	1,295	1,919	10,963	(42)	(5,619)	(3,402)	4,648
BALANCING WHEELS	(4,320)	400	(1,800)	0	(2,600)	(4,400)	(8,036)
BALANCING VIRTUAL	(48,183)	(48,067)	(30,520)	(37,090)	(34,697)	(40,946)	(38,172)
	24	25	26	27	28		
DAM NYCA	368,518	402,228	441,718	432,185	414,029		
DAM NON-NYCA	88,991	74,873	50,236	46,790	57,500		
DAM WHEELS	1,500	3,500	6,190	7,519	1,500		
DAM VIRTUAL	42,631	42,100	29,310	23,241	22,390		
BALANCING NYCA	22,502	7,751	20,662	6,155	(7,269)		
BALANCING NON-NYCA	(3,618)	(3,598)	(1,487)	5,418	1,265		
BALANCING WHEELS	1,172	748	2,799	(763)	200		
BALANCING VIRTUAL	(42,631)	(42,100)	(29,310)	(23,241)	(22,390)		



SETTLEMENTS REPORT
FEBRUARY 2003 CLOSEOUT SETTLEMENT
MARCH 6, 2006

CLOSEOUT SETTLEMENT MARKET SUPPLY DELTA ANALYSIS

	MONDAY	TUESDAY	WEDNESDAY	THURSDAY	FRIDAY	SATURDAY	SUNDAY
						1	2
DAM NYCA						0	0
DAM NON-NYCA						0	0
DAM WHEELS						0	0
DAM VIRTUAL						0	0
BALANCING NYCA						4	5
BALANCING NON-NYCA						0	0
BALANCING WHEELS						0	0
BALANCING VIRTUAL						0	0
	3	4	5	6	7	8	9
DAM NYCA	0	0	0	0	0	0	0
DAM NON-NYCA	0	0	0	0	0	0	0
DAM WHEELS	0	0	0	0	0	0	0
DAM VIRTUAL	0	0	0	0	0	0	0
BALANCING NYCA	5	695	0	9	(1)	(3)	(3)
BALANCING NON-NYCA	0	0	0	0	0	0	0
BALANCING WHEELS	0	0	0	0	0	0	0
BALANCING VIRTUAL	0	0	0	0	0	0	0
	10	11	12	13	14	15	16
DAM NYCA	0	0	0	0	0	0	0
DAM NON-NYCA	0	0	0	0	0	0	0
DAM WHEELS	0	0	0	0	0	0	0
DAM VIRTUAL	0	0	0	0	0	0	0
BALANCING NYCA	0	43	9	17	7	6	10
BALANCING NON-NYCA	0	0	0	0	0	0	0
BALANCING WHEELS	0	0	0	0	0	0	0
BALANCING VIRTUAL	0	0	0	0	0	0	0
	17	18	19	20	21	22	23
DAM NYCA	0	0	0	0	0	0	0
DAM NON-NYCA	0	0	0	0	0	0	0
DAM WHEELS	0	0	0	0	0	0	0
DAM VIRTUAL	0	0	0	0	0	0	0
BALANCING NYCA	3	9	(0)	5	3	2	12
BALANCING NON-NYCA	0	0	0	0	0	0	0
BALANCING WHEELS	0	0	0	0	0	0	0
BALANCING VIRTUAL	0	0	0	0	0	0	0
	24	25	26	27	28		
DAM NYCA	0	0	0	0	0		
DAM NON-NYCA	0	0	0	0	0		
DAM WHEELS	0	0	0	0	0		
DAM VIRTUAL	0	0	0	0	0		
BALANCING NYCA	(5)	10	6	15	24		
BALANCING NON-NYCA	0	0	0	0	0		
BALANCING WHEELS	0	0	0	0	0		
BALANCING VIRTUAL	0	0	0	0	0		

