

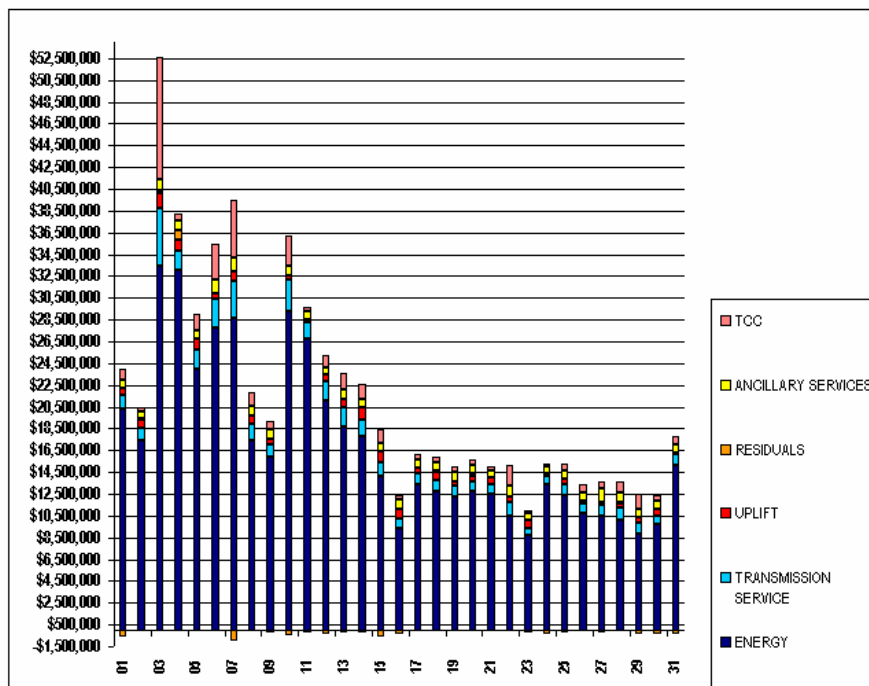
# SETTLEMENTS REPORT

## MARCH 2003 CLOSEOUT SETTLEMENT

### MARCH 6, 2006

#### 4-MONTH SETTLEMENT ADJUSTMENT MARKET COSTS ANALYSIS

	MONDAY	TUESDAY	WEDNESDAY	THURSDAY	FRIDAY	SATURDAY	SUNDAY
						1	2
ENERGY						\$20,374,886.07	\$17,452,673.84
TRANSMISSION SERVICE						\$1,192,483.71	\$1,089,703.18
UPLIFT						\$692,081.49	\$708,752.18
RESIDUALS						(\$610,849.10)	\$200,291.08
ANCILLARY SERVICES						\$724,541.20	\$640,605.23
TCC						\$1,049,658.91	\$310,073.11
	3	4	5	6	7	8	9
ENERGY	\$33,428,821.77	\$33,085,438.18	\$23,925,159.71	\$27,815,983.26	\$28,622,833.94	\$17,432,993.07	\$15,847,946.72
TRANSMISSION SERVICE	\$5,341,139.86	\$1,763,338.34	\$1,862,809.70	\$2,629,704.76	\$3,465,229.65	\$1,482,676.37	\$1,144,242.24
UPLIFT	\$1,388,527.49	\$1,035,535.76	\$1,027,137.28	\$432,465.42	\$908,082.91	\$714,002.39	\$523,886.67
RESIDUALS	\$166,908.62	\$840,622.18	(\$53,645.46)	\$76,073.47	(\$876,294.23)	\$97,549.69	(\$268,233.63)
ANCILLARY SERVICES	\$1,096,940.68	\$825,009.80	\$658,857.84	\$1,205,781.49	\$1,184,646.66	\$862,100.11	\$931,063.07
TCC	\$11,242,273.77	\$639,418.10	\$1,494,361.31	\$3,275,711.44	\$5,278,856.72	\$1,186,772.39	\$705,259.50
	10	11	12	13	14	15	16
ENERGY	\$29,330,444.89	\$26,791,878.82	\$21,110,148.49	\$18,686,572.94	\$17,737,019.46	\$14,094,493.20	\$8,361,993.33
TRANSMISSION SERVICE	\$2,808,584.75	\$1,460,402.82	\$1,735,606.73	\$1,801,568.76	\$1,566,586.88	\$1,325,191.35	\$843,544.58
UPLIFT	\$457,604.97	\$300,358.32	\$576,960.67	\$734,737.45	\$1,180,927.50	\$1,007,496.87	\$954,916.61
RESIDUALS	(\$441,605.01)	(\$290,892.22)	(\$383,515.98)	(\$279,476.77)	(\$296,035.63)	(\$555,001.32)	(\$338,367.66)
ANCILLARY SERVICES	\$860,119.51	\$720,159.23	\$710,271.42	\$864,946.06	\$743,080.00	\$786,723.07	\$793,034.08
TCC	\$2,759,701.59	\$310,840.99	\$1,076,618.67	\$1,574,731.79	\$1,381,536.60	\$1,208,308.18	\$371,535.71
	17	18	19	20	21	22	23
ENERGY	\$13,429,460.27	\$12,724,908.90	\$12,190,393.45	\$12,741,933.36	\$12,526,531.68	\$10,423,764.21	\$8,701,047.51
TRANSMISSION SERVICE	\$990,420.79	\$983,959.14	\$1,027,279.93	\$847,468.99	\$868,035.90	\$1,280,475.04	\$668,509.81
UPLIFT	\$452,478.69	\$793,574.94	\$443,087.25	\$579,432.34	\$696,100.42	\$588,657.65	\$778,988.61
RESIDUALS	(\$14,412.69)	\$137,826.11	(\$51,536.53)	\$256,972.32	(\$29,999.06)	(\$115,068.08)	(\$176,455.58)
ANCILLARY SERVICES	\$791,649.60	\$761,541.88	\$831,777.33	\$774,164.44	\$676,383.57	\$925,878.36	\$621,893.10
TCC	\$466,992.10	\$452,214.54	\$470,292.09	\$446,376.69	\$367,087.90	\$1,968,411.52	\$222,559.22
	24	25	26	27	28	29	30
ENERGY	\$13,326,272.80	\$12,413,229.33	\$10,711,689.13	\$10,517,628.13	\$10,094,088.92	\$8,849,076.16	\$8,775,490.36
TRANSMISSION SERVICE	\$830,353.87	\$957,248.82	\$923,163.49	\$957,417.73	\$1,107,244.77	\$895,120.53	\$770,098.96
UPLIFT	\$221,890.60	\$525,699.35	\$271,271.78	\$294,448.50	\$455,839.63	\$486,187.88	\$559,570.46
RESIDUALS	(\$304,235.83)	(\$242,856.80)	(\$85,974.69)	(\$241,532.87)	\$67,886.06	(\$320,057.29)	(\$381,167.17)
ANCILLARY SERVICES	\$661,296.44	\$777,193.57	\$784,138.62	\$1,199,137.68	\$869,977.06	\$817,631.05	\$753,173.55
TCC	\$192,932.28	\$665,696.33	\$631,211.90	\$694,434.37	\$1,084,368.15	\$1,325,299.50	\$529,012.06
	31						
ENERGY	\$15,106,779.00						
TRANSMISSION SERVICE	\$1,005,214.00						
UPLIFT	\$217,824.32						
RESIDUALS	(\$319,572.43)						
ANCILLARY SERVICES	\$684,208.64						
TCC	\$725,583.30						



FOR DISCUSSION PURPOSES ONLY

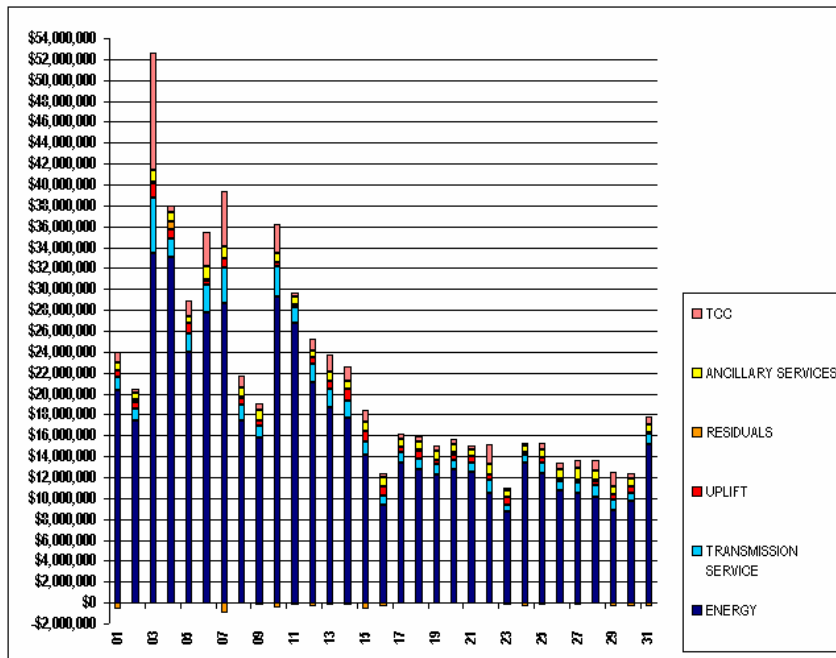
# SETTLEMENTS REPORT

## MARCH 2003 CLOSEOUT SETTLEMENT

### MARCH 6, 2006

## 12-MONTH CLOSEOUT SETTLEMENT MARKET COSTS ANALYSIS

	MONDAY	TUESDAY	WEDNESDAY	THURSDAY	FRIDAY	SATURDAY	SUNDAY
						1	2
ENERGY						\$20,374,889.31	\$17,452,673.76
TRANSMISSION SERVICE						\$1,192,367.12	\$1,089,580.26
UPLIFT						\$674,410.52	\$701,708.90
RESIDUALS						(\$611,593.29)	\$200,211.53
ANCILLARY SERVICES						\$735,188.60	\$639,727.15
TCC						\$1,049,949.31	\$310,073.11
	3	4	5	6	7	8	9
ENERGY	\$33,428,825.14	\$33,085,431.28	\$23,925,084.01	\$27,815,978.99	\$28,622,835.55	\$17,432,992.70	\$15,834,112.31
TRANSMISSION SERVICE	\$5,341,034.27	\$1,763,227.36	\$1,862,894.01	\$2,629,366.35	\$3,465,128.10	\$1,482,569.14	\$1,144,035.55
UPLIFT	\$1,321,236.46	\$818,128.27	\$929,933.85	\$385,593.88	\$836,182.78	\$698,533.42	\$404,893.46
RESIDUALS	\$167,020.22	\$837,914.27	(\$53,523.31)	\$74,467.50	(\$877,400.99)	\$88,366.01	(\$254,595.95)
ANCILLARY SERVICES	\$1,098,517.94	\$847,169.78	\$680,540.73	\$1,267,462.29	\$1,168,038.98	\$845,520.84	\$925,086.90
TCC	\$11,249,580.09	\$639,418.10	\$1,494,361.55	\$3,276,132.64	\$5,280,741.44	\$1,186,611.24	\$705,259.50
	10	11	12	13	14	15	16
ENERGY	\$29,330,445.10	\$26,791,879.25	\$21,110,149.12	\$18,686,573.09	\$17,737,019.78	\$14,094,493.83	\$9,361,993.75
TRANSMISSION SERVICE	\$2,808,470.75	\$1,480,293.10	\$1,735,497.79	\$1,801,458.05	\$1,566,486.41	\$1,325,093.56	\$843,440.92
UPLIFT	\$459,397.33	\$294,328.24	\$584,493.95	\$736,160.20	\$1,170,338.18	\$1,004,323.29	\$951,801.62
RESIDUALS	(\$443,714.38)	(\$291,015.83)	(\$383,414.29)	(\$273,638.93)	(\$296,631.78)	(\$555,169.21)	(\$339,065.61)
ANCILLARY SERVICES	\$875,214.38	\$728,110.52	\$725,519.48	\$894,900.20	\$772,523.57	\$843,124.21	\$816,590.14
TCC	\$2,759,701.59	\$310,840.99	\$1,076,557.34	\$1,574,857.34	\$1,382,033.88	\$1,206,706.11	\$371,535.71
	17	18	19	20	21	22	23
ENERGY	\$13,429,460.11	\$12,724,908.87	\$12,190,415.67	\$12,741,931.52	\$12,526,534.22	\$10,423,762.72	\$8,701,047.59
TRANSMISSION SERVICE	\$990,336.30	\$983,873.53	\$1,027,183.59	\$847,370.69	\$865,942.62	\$1,280,374.38	\$668,407.77
UPLIFT	\$456,205.54	\$792,270.07	\$441,173.78	\$521,679.79	\$570,567.68	\$582,851.64	\$775,094.94
RESIDUALS	(\$14,406.86)	\$137,575.53	(\$51,339.65)	\$256,706.40	(\$30,017.63)	(\$115,585.27)	(\$176,765.35)
ANCILLARY SERVICES	\$806,398.70	\$814,325.41	\$854,128.79	\$805,232.63	\$688,915.35	\$839,200.32	\$629,187.80
TCC	\$466,992.10	\$452,214.54	\$470,297.13	\$446,376.69	\$367,181.98	\$1,969,418.56	\$222,559.22
	24	25	26	27	28	29	30
ENERGY	\$13,326,313.04	\$12,413,229.00	\$10,711,688.94	\$10,517,627.20	\$10,094,104.43	\$8,849,075.88	\$9,775,489.99
TRANSMISSION SERVICE	\$830,259.88	\$957,151.80	\$923,058.93	\$957,313.85	\$1,107,120.86	\$994,824.23	\$769,845.85
UPLIFT	\$225,509.57	\$516,261.06	\$274,843.68	\$268,510.31	\$448,794.75	\$489,477.11	\$558,883.00
RESIDUALS	(\$304,325.07)	(\$242,923.33)	(\$85,877.99)	(\$241,437.14)	\$67,764.10	(\$319,894.30)	(\$380,961.76)
ANCILLARY SERVICES	\$672,990.77	\$786,541.77	\$796,074.86	\$1,156,267.99	\$872,835.09	\$822,582.04	\$757,072.60
TCC	\$192,922.92	\$665,729.87	\$631,226.37	\$694,434.37	\$1,084,753.80	\$1,323,541.59	\$528,458.83
	31						
ENERGY	\$15,106,778.37						
TRANSMISSION SERVICE	\$1,005,064.88						
UPLIFT	\$209,629.09						
RESIDUALS	(\$319,635.01)						
ANCILLARY SERVICES	\$697,676.37						
TCC	\$723,413.36						

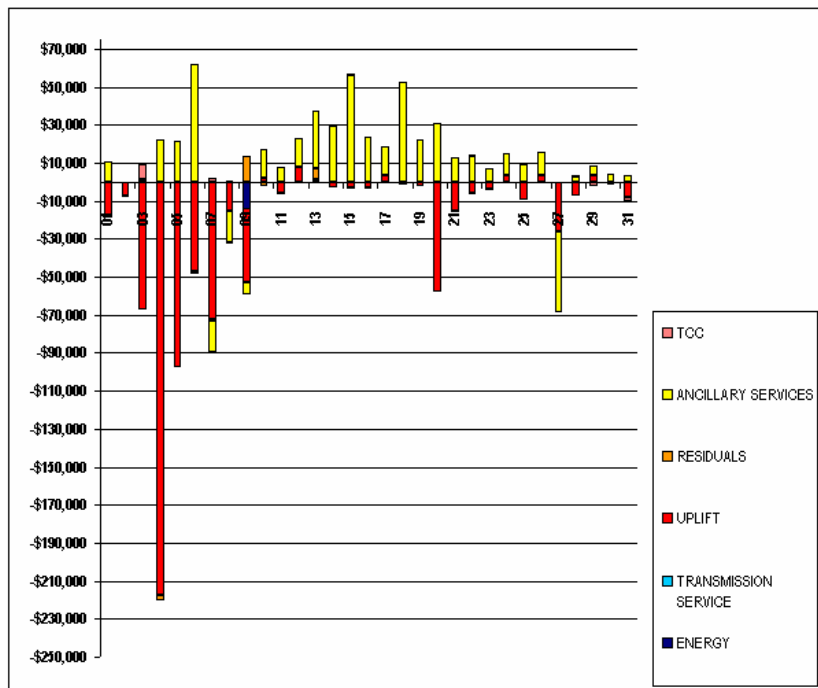


FOR DISCUSSION PURPOSES ONLY

SETTLEMENTS REPORT  
MARCH 2003 CLOSEOUT SETTLEMENT  
MARCH 6, 2006

**CLOSEOUT SETTLEMENT MARKET COSTS DELTA ANALYSIS**

	MONDAY	TUESDAY	WEDNESDAY	THURSDAY	FRIDAY	SATURDAY	SUNDAY
						1	2
ENERGY						\$3.24	(\$0.08)
TRANSMISSION SERVICE						(\$116.59)	(\$122.92)
UPLIFT						(\$17,670.97)	(\$7,043.28)
RESIDUALS						\$744.19	(\$79.55)
ANCILLARY SERVICES						\$10,647.40	(\$878.08)
TCC						\$290.40	\$0.00
	3	4	5	6	7	8	9
ENERGY	\$3.37	(\$6.90)	(\$75.70)	(\$4.27)	\$1.81	(\$0.37)	(\$13,834.41)
TRANSMISSION SERVICE	(\$105.59)	(\$110.98)	(\$115.69)	(\$338.41)	(\$101.55)	(\$107.23)	(\$206.69)
UPLIFT	(\$67,289.03)	(\$217,407.49)	(\$97,203.43)	(\$46,871.54)	(\$71,900.13)	(\$15,468.97)	(\$38,993.21)
RESIDUALS	\$111.60	(\$2,707.91)	\$122.15	(\$1,605.97)	(\$1,106.76)	\$816.32	\$13,637.68
ANCILLARY SERVICES	\$1,577.26	\$22,159.98	\$21,682.89	\$61,680.80	(\$16,607.68)	(\$16,579.27)	(\$5,976.17)
TCC	\$7,306.32	\$0.00	\$0.24	\$421.20	\$1,884.72	(\$161.15)	\$0.00
	10	11	12	13	14	15	16
ENERGY	\$0.21	\$0.43	\$0.63	\$0.15	\$0.32	\$0.63	\$0.42
TRANSMISSION SERVICE	(\$114.00)	(\$109.72)	(\$108.94)	(\$110.71)	(\$100.47)	(\$97.79)	(\$103.66)
UPLIFT	\$1,792.36	(\$6,030.08)	\$7,533.28	\$1,422.75	(\$2,589.32)	(\$3,173.58)	(\$3,114.99)
RESIDUALS	(\$2,109.37)	(\$123.81)	\$101.69	\$5,837.84	(\$596.15)	(\$167.89)	(\$697.95)
ANCILLARY SERVICES	\$15,094.87	\$7,951.29	\$15,248.06	\$29,954.14	\$29,443.57	\$66,401.14	\$23,556.06
TCC	\$0.00	\$0.00	(\$61.33)	\$125.55	\$497.28	\$397.93	\$0.00
	17	18	19	20	21	22	23
ENERGY	(\$0.16)	(\$0.03)	\$22.22	(\$1.84)	\$2.54	(\$1.49)	\$0.08
TRANSMISSION SERVICE	(\$84.49)	(\$85.61)	(\$86.34)	(\$98.30)	(\$93.28)	(\$100.66)	(\$102.04)
UPLIFT	\$3,726.85	(\$1,304.87)	(\$1,913.47)	(\$57,752.55)	(\$15,532.74)	(\$5,806.01)	(\$3,893.67)
RESIDUALS	\$5.83	(\$250.58)	\$196.88	(\$265.92)	(\$18.57)	(\$517.19)	(\$509.77)
ANCILLARY SERVICES	\$14,749.10	\$52,783.53	\$22,351.46	\$31,068.19	\$12,531.78	\$13,321.96	\$7,294.70
TCC	\$0.00	\$0.00	\$5.04	\$0.00	\$94.08	\$1,007.04	\$0.00
	24	25	26	27	28	29	30
ENERGY	\$40.24	(\$0.33)	(\$0.19)	(\$0.93)	\$15.51	(\$0.28)	(\$0.37)
TRANSMISSION SERVICE	(\$93.99)	(\$97.02)	(\$104.56)	(\$103.88)	(\$123.91)	(\$296.30)	(\$253.11)
UPLIFT	\$3,618.97	(\$9,438.29)	\$3,571.90	(\$25,938.19)	(\$7,044.88)	\$3,289.23	(\$687.46)
RESIDUALS	(\$89.24)	(\$66.53)	\$96.70	\$95.73	(\$121.96)	\$162.99	\$205.41
ANCILLARY SERVICES	\$11,694.33	\$9,348.20	\$11,936.24	(\$42,869.69)	\$2,858.03	\$4,750.99	\$3,899.05
TCC	(\$9.36)	\$33.54	\$14.47	\$0.00	\$385.65	(\$1,757.91)	(\$553.23)
	31						
ENERGY	(\$0.63)						
TRANSMISSION SERVICE	(\$149.12)						
UPLIFT	(\$8,195.23)						
RESIDUALS	(\$62.58)						
ANCILLARY SERVICES	\$3,467.73						
TCC	(\$2,169.94)						



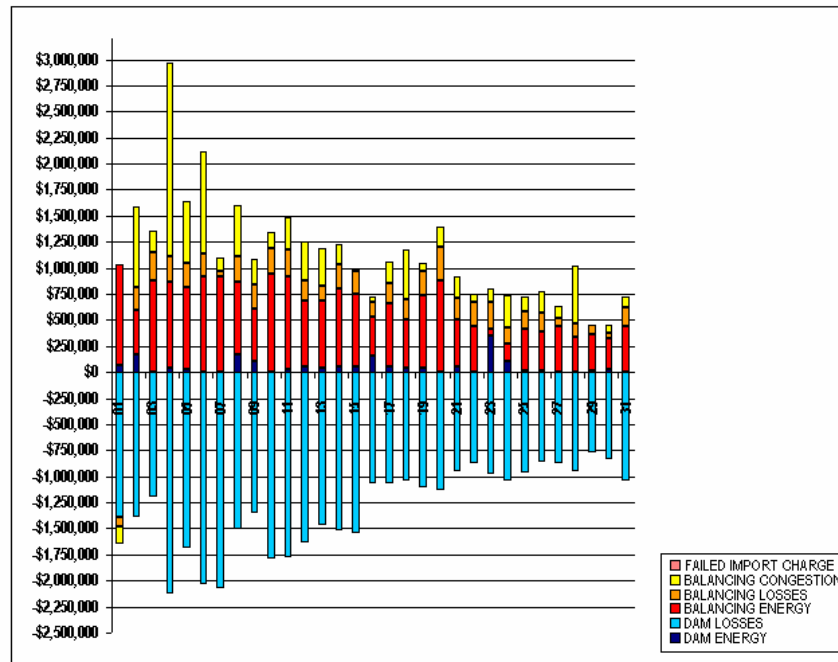
# SETTLEMENTS REPORT

## MARCH 2003 CLOSEOUT SETTLEMENT

### MARCH 6, 2006

#### 4-MONTH SETTLEMENT ADJUSTMENT MARKET RESIDUALS ANALYSIS

	MONDAY	TUESDAY	WEDNESDAY	THURSDAY	FRIDAY	SATURDAY	SUNDAY
						1	2
DAM ENERGY						\$67,781.87	\$164,958.37
DAM LOSSES						(\$1,395,489.76)	(\$1,386,896.25)
BALANCING ENERGY						\$971,044.52	\$436,148.09
BALANCING LOSSES						(\$82,284.56)	\$207,287.76
BALANCING CONGESTION						(\$171,901.17)	\$778,793.11
FAILED IMPORT CHARGE						\$0.00	\$0.00
	3	4	5	6	7	8	9
DAM ENERGY	(\$4,190.46)	\$39,649.66	\$24,066.90	(\$1,553.42)	\$788.44	\$165,879.01	\$104,920.82
DAM LOSSES	(\$1,191,013.68)	(\$2,125,018.13)	(\$1,888,376.11)	(\$2,032,816.05)	(\$2,068,750.43)	(\$1,506,101.33)	(\$1,354,236.51)
BALANCING ENERGY	\$875,660.76	\$820,573.47	\$791,155.76	\$917,685.19	\$914,244.92	\$703,169.54	\$508,171.38
BALANCING LOSSES	\$279,454.63	\$253,834.62	\$233,149.26	\$222,968.15	\$56,939.60	\$236,846.15	\$233,299.33
BALANCING CONGESTION	\$206,997.37	\$1,851,582.56	\$586,358.73	\$969,789.60	\$120,483.24	\$497,756.32	\$239,611.35
FAILED IMPORT CHARGE	\$0.00	\$0.00	\$0.00	\$0.00	\$0.00	\$0.00	\$0.00
	10	11	12	13	14	15	16
DAM ENERGY	(\$1,901.32)	\$31,783.72	\$49,514.32	\$43,202.93	\$54,128.38	\$57,973.52	\$158,986.70
DAM LOSSES	(\$1,788,637.58)	(\$1,773,360.46)	(\$1,630,044.18)	(\$1,473,213.80)	(\$1,523,019.05)	(\$1,542,319.32)	(\$1,063,983.84)
BALANCING ENERGY	\$937,096.15	\$881,418.36	\$634,380.15	\$639,454.33	\$747,235.19	\$693,396.50	\$370,175.20
BALANCING LOSSES	\$252,033.32	\$266,019.36	\$190,521.52	\$147,949.35	\$234,590.17	\$212,004.13	\$146,725.48
BALANCING CONGESTION	\$159,804.42	\$303,246.80	\$372,112.21	\$363,130.42	\$191,029.68	\$23,943.85	\$49,728.80
FAILED IMPORT CHARGE	\$0.00	\$0.00	\$0.00	\$0.00	\$0.00	\$0.00	\$0.00
	17	18	19	20	21	22	23
DAM ENERGY	\$59,469.10	\$41,345.48	\$40,072.69	\$6,666.30	\$57,109.93	\$1,845.13	\$345,777.33
DAM LOSSES	(\$1,068,938.58)	(\$1,039,852.65)	(\$1,103,738.82)	(\$1,132,430.27)	(\$949,896.18)	(\$868,935.26)	(\$979,871.06)
BALANCING ENERGY	\$593,608.18	\$461,665.09	\$695,795.99	\$875,816.82	\$443,143.53	\$442,932.44	\$73,501.82
BALANCING LOSSES	\$204,300.81	\$189,743.02	\$234,260.10	\$314,835.97	\$205,316.92	\$231,585.68	\$253,674.61
BALANCING CONGESTION	\$197,147.80	\$484,925.17	\$82,073.51	\$192,083.50	\$214,326.74	\$77,503.93	\$130,461.72
FAILED IMPORT CHARGE	\$0.00	\$0.00	\$0.00	\$0.00	\$0.00	\$0.00	\$0.00
	24	25	26	27	28	29	30
DAM ENERGY	\$110,632.77	\$17,508.90	\$20,677.34	\$4,567.87	\$263.56	\$15,116.63	\$22,408.32
DAM LOSSES	(\$1,039,490.95)	(\$967,221.63)	(\$866,648.95)	(\$875,107.94)	(\$947,205.97)	(\$774,539.01)	(\$830,184.80)
BALANCING ENERGY	\$162,167.79	\$391,114.21	\$367,479.97	\$436,867.47	\$332,131.07	\$344,716.47	\$300,742.25
BALANCING LOSSES	\$159,424.48	\$176,488.98	\$178,551.17	\$73,264.77	\$139,154.96	\$88,147.75	\$49,438.76
BALANCING CONGESTION	\$303,030.08	\$139,252.74	\$213,965.78	\$118,874.96	\$543,542.44	\$6,500.87	\$76,428.30
FAILED IMPORT CHARGE	\$0.00	\$0.00	\$0.00	\$0.00	\$0.00	\$0.00	\$0.00
	31						
DAM ENERGY	\$4,865.37						
DAM LOSSES	(\$1,041,735.12)						
BALANCING ENERGY	\$437,187.05						
BALANCING LOSSES	\$180,984.50						
BALANCING CONGESTION	\$99,125.77						
FAILED IMPORT CHARGE	\$0.00						



FOR DISCUSSION PURPOSES ONLY

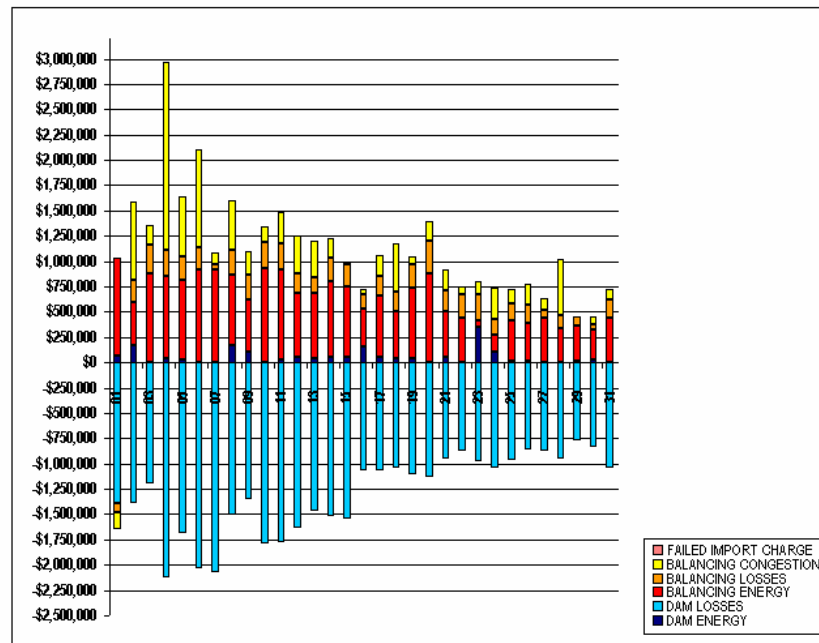
# SETTLEMENTS REPORT

## MARCH 2003 CLOSEOUT SETTLEMENT

### MARCH 6, 2006

## 12-MONTH CLOSEOUT SETTLEMENT MARKET RESIDUALS ANALYSIS

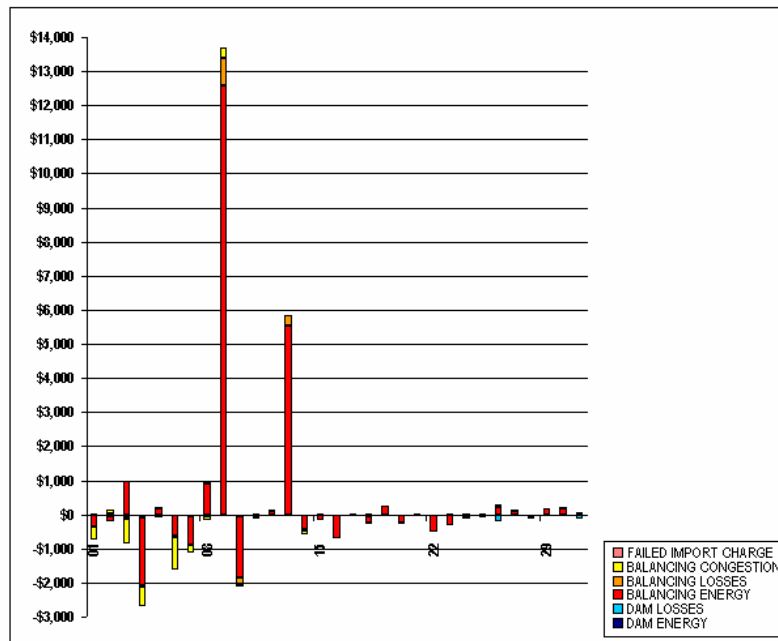
	MONDAY	TUESDAY	WEDNESDAY	THURSDAY	FRIDAY	SATURDAY	SUNDAY
						1	2
DAM ENERGY						\$67,783.56	\$164,964.75
DAM LOSSES						(\$1,395,520.97)	(\$1,386,950.71)
BALANCING ENERGY						\$970,717.81	\$436,002.26
BALANCING LOSSES						(\$82,272.62)	\$207,309.28
BALANCING CONGESTION						(\$172,301.07)	\$778,885.95
FAILED IMPORT CHARGE						\$0.00	\$0.00
	3	4	5	6	7	8	9
DAM ENERGY	(\$4,190.67)	\$39,649.32	\$24,067.39	(\$1,553.42)	\$788.47	\$165,884.27	\$104,924.42
DAM LOSSES	(\$1,191,048.16)	(\$2,125,098.31)	(\$1,688,424.09)	(\$2,032,816.05)	(\$2,068,799.22)	(\$1,506,156.28)	(\$1,354,292.16)
BALANCING ENERGY	\$876,629.43	\$818,555.33	\$791,352.23	\$917,070.63	\$913,416.27	\$704,060.66	\$520,769.08
BALANCING LOSSES	\$279,370.52	\$253,796.50	\$233,169.44	\$222,918.68	\$56,943.19	\$236,918.65	\$234,075.00
BALANCING CONGESTION	\$206,259.10	\$1,851,011.43	\$586,311.72	\$968,847.66	\$120,250.30	\$497,658.71	\$239,927.71
FAILED IMPORT CHARGE	\$0.00	\$0.00	\$0.00	\$0.00	\$0.00	\$0.00	\$0.00
	10	11	12	13	14	15	16
DAM ENERGY	(\$1,901.42)	\$31,784.75	\$49,514.84	\$43,202.93	\$54,128.79	\$57,973.52	\$158,986.70
DAM LOSSES	(\$1,788,692.05)	(\$1,773,416.66)	(\$1,630,057.01)	(\$1,473,223.85)	(\$1,523,048.72)	(\$1,542,319.32)	(\$1,063,983.84)
BALANCING ENERGY	\$835,313.70	\$881,420.08	\$634,477.01	\$644,992.76	\$746,841.47	\$693,222.64	\$369,480.14
BALANCING LOSSES	\$251,845.26	\$266,033.22	\$190,547.81	\$148,267.81	\$234,556.74	\$212,008.67	\$146,722.55
BALANCING CONGESTION	\$159,720.13	\$303,162.78	\$372,103.06	\$363,121.42	\$190,889.94	\$23,945.28	\$49,728.84
FAILED IMPORT CHARGE	\$0.00	\$0.00	\$0.00	\$0.00	\$0.00	\$0.00	\$0.00
	17	18	19	20	21	22	23
DAM ENERGY	\$59,470.36	\$41,347.58	\$40,074.43	\$6,666.32	\$57,112.69	\$1,845.07	\$345,786.03
DAM LOSSES	(\$1,068,972.98)	(\$1,039,897.25)	(\$1,103,768.44)	(\$1,132,460.96)	(\$949,939.43)	(\$868,953.75)	(\$879,884.18)
BALANCING ENERGY	\$593,631.82	\$461,457.74	\$696,034.87	\$875,604.72	\$443,158.31	\$442,441.61	\$73,182.36
BALANCING LOSSES	\$204,308.92	\$189,731.63	\$234,280.04	\$314,816.78	\$205,328.12	\$231,577.18	\$253,684.66
BALANCING CONGESTION	\$197,155.02	\$484,935.83	\$82,059.45	\$192,079.54	\$214,322.68	\$77,504.62	\$130,465.78
FAILED IMPORT CHARGE	\$0.00	\$0.00	\$0.00	\$0.00	\$0.00	\$0.00	\$0.00
	24	25	26	27	28	29	30
DAM ENERGY	\$110,638.39	\$17,509.68	\$20,678.53	\$4,568.14	\$263.57	\$15,116.63	\$22,408.32
DAM LOSSES	(\$1,039,536.83)	(\$867,260.59)	(\$866,840.56)	(\$875,143.61)	(\$947,250.95)	(\$774,552.30)	(\$830,184.80)
BALANCING ENERGY	\$162,097.17	\$391,107.43	\$367,699.07	\$436,972.18	\$332,124.22	\$344,878.51	\$300,934.00
BALANCING LOSSES	\$159,424.90	\$176,461.52	\$178,574.71	\$73,281.14	\$139,127.68	\$88,161.86	\$49,452.47
BALANCING CONGESTION	\$303,051.30	\$159,258.63	\$214,010.26	\$118,885.01	\$543,499.58	\$6,501.00	\$76,428.25
FAILED IMPORT CHARGE	\$0.00	\$0.00	\$0.00	\$0.00	\$0.00	\$0.00	\$0.00
	31						
DAM ENERGY	\$4,865.57						
DAM LOSSES	(\$1,041,849.86)						
BALANCING ENERGY	\$437,234.67						
BALANCING LOSSES	\$180,991.44						
BALANCING CONGESTION	\$99,123.17						
FAILED IMPORT CHARGE	\$0.00						



SETTLEMENTS REPORT  
MARCH 2003 CLOSEOUT SETTLEMENT  
MARCH 6, 2006

CLOSEOUT SETTLEMENT MARKET RESIDUALS DELTA ANALYSIS

	MONDAY	TUESDAY	WEDNESDAY	THURSDAY	FRIDAY	SATURDAY	SUNDAY
						1	2
DAM ENERGY						\$1.69	\$6.38
DAM LOSSES						(\$31.21)	(\$54.46)
BALANCING ENERGY						(\$526.71)	(\$145.83)
BALANCING LOSSES						\$11.94	\$21.52
BALANCING CONGESTION						(\$399.90)	\$82.84
FAILED IMPORT CHARGE						\$0.00	\$0.00
	3	4	5	6	7	8	9
DAM ENERGY	(\$0.21)	(\$0.34)	\$0.49	\$0.00	\$0.03	\$5.26	\$3.60
DAM LOSSES	(\$34.48)	(\$80.18)	(\$47.98)	\$0.00	(\$48.79)	(\$54.95)	(\$55.65)
BALANCING ENERGY	\$968.67	(\$2,018.14)	\$196.47	(\$614.56)	(\$828.65)	\$891.12	\$12,597.70
BALANCING LOSSES	(\$84.11)	(\$38.12)	\$20.18	(\$48.47)	\$3.59	\$72.50	\$775.67
BALANCING CONGESTION	(\$738.27)	(\$571.13)	(\$47.01)	(\$941.94)	(\$232.94)	(\$87.61)	\$316.36
FAILED IMPORT CHARGE	\$0.00	\$0.00	\$0.00	\$0.00	\$0.00	\$0.00	\$0.00
	10	11	12	13	14	15	16
DAM ENERGY	(\$0.10)	\$1.03	\$0.52	\$0.00	\$0.41	\$0.00	\$0.00
DAM LOSSES	(\$54.47)	(\$56.20)	(\$12.83)	(\$10.05)	(\$29.67)	\$0.00	\$0.00
BALANCING ENERGY	(\$1,782.45)	\$1.72	\$96.86	\$5,538.43	(\$393.72)	(\$173.86)	(\$695.06)
BALANCING LOSSES	(\$188.06)	\$13.86	\$26.29	\$318.46	(\$33.43)	\$4.54	(\$2.93)
BALANCING CONGESTION	(\$84.29)	(\$84.02)	(\$8.15)	(\$9.00)	(\$139.74)	\$1.43	\$0.04
FAILED IMPORT CHARGE	\$0.00	\$0.00	\$0.00	\$0.00	\$0.00	\$0.00	\$0.00
	17	18	19	20	21	22	23
DAM ENERGY	\$1.26	\$2.10	\$1.74	\$0.02	\$2.76	(\$0.06)	\$8.70
DAM LOSSES	(\$34.40)	(\$44.60)	(\$49.62)	(\$30.69)	(\$43.25)	(\$18.49)	(\$13.12)
BALANCING ENERGY	\$23.64	(\$207.35)	\$238.88	(\$212.10)	\$14.78	(\$490.83)	(\$319.46)
BALANCING LOSSES	\$8.11	(\$11.39)	\$19.94	(\$19.19)	\$11.20	(\$8.50)	\$10.05
BALANCING CONGESTION	\$7.22	\$10.66	(\$14.06)	(\$3.96)	(\$4.06)	\$0.69	\$4.06
FAILED IMPORT CHARGE	\$0.00	\$0.00	\$0.00	\$0.00	\$0.00	\$0.00	\$0.00
	24	25	26	27	28	29	30
DAM ENERGY	\$5.62	\$0.78	\$1.19	\$0.27	\$0.01	\$0.00	\$0.00
DAM LOSSES	(\$45.88)	(\$38.96)	(\$191.61)	(\$35.67)	(\$44.98)	(\$13.29)	\$0.00
BALANCING ENERGY	(\$70.62)	(\$6.78)	\$219.10	\$104.71	(\$6.85)	\$162.04	\$191.75
BALANCING LOSSES	\$0.42	(\$27.46)	\$23.54	\$16.37	(\$27.28)	\$14.11	\$13.71
BALANCING CONGESTION	\$21.22	\$5.89	\$44.48	\$10.05	(\$42.86)	\$0.13	(\$0.05)
FAILED IMPORT CHARGE	\$0.00	\$0.00	\$0.00	\$0.00	\$0.00	\$0.00	\$0.00
	31						
DAM ENERGY	\$0.20						
DAM LOSSES	(\$114.74)						
BALANCING ENERGY	\$47.62						
BALANCING LOSSES	\$6.94						
BALANCING CONGESTION	(\$2.60)						
FAILED IMPORT CHARGE	\$0.00						

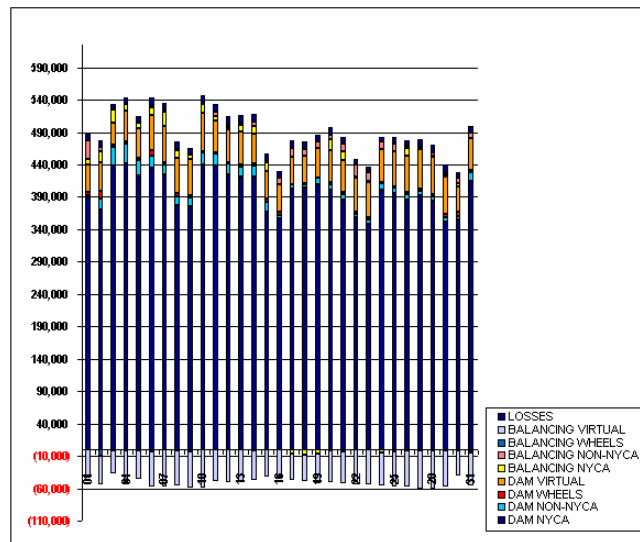


FOR DISCUSSION PURPOSES ONLY

SETTLEMENTS REPORT  
MARCH 2003 CLOSEOUT SETTLEMENT  
MARCH 6, 2006

4-MONTH SETTLEMENT ADJUSTMENT MARKET WITHDRAWALS ANALYSIS

	MONDAY	TUESDAY	WEDNESDAY	THURSDAY	FRIDAY	SATURDAY	SUNDAY
						1	2
DAM NYCA						388,332	369,835
DAM NON-NYCA						4,400	17,815
DAM WHEELS						4,000	11,400
DAM VIRTUAL						43,978	44,395
BALANCING NYCA						6,982	17,542
BALANCING NON-NYCA						28,988	6,775
BALANCING WHEELS						(339)	(9,163)
BALANCING VIRTUAL						(43,978)	(44,395)
UFE/LOSSES						11,038	8,863
	3	4	5	6	7	8	9
DAM NYCA	437,967	442,256	422,527	435,095	424,549	376,772	375,320
DAM NON-NYCA	28,820	29,340	25,056	18,254	15,996	14,742	14,106
DAM WHEELS	3,315	3,315	3,315	8,115	2,190	3,600	3,600
DAM VIRTUAL	34,517	40,669	44,522	54,877	57,496	54,395	54,915
BALANCING NYCA	20,820	9,915	8,405	11,703	20,671	13,211	8,064
BALANCING NON-NYCA	791	32	(179)	3,790	985	1,751	(2,617)
BALANCING WHEELS	(1,800)	(1,914)	(1,400)	(3,167)	1,310	(656)	(900)
BALANCING VIRTUAL	(34,517)	(40,669)	(44,522)	(54,877)	(57,496)	(54,395)	(54,915)
UFE/LOSSES	7,719	9,993	11,088	11,327	12,272	11,454	9,181
	10	11	12	13	14	15	16
DAM NYCA	439,844	438,738	423,950	421,055	421,190	367,410	357,354
DAM NON-NYCA	18,793	18,472	17,661	15,473	17,057	14,482	4,990
DAM WHEELS	1,515	1,515	2,150	3,915	3,600	6,200	4,800
DAM VIRTUAL	59,696	48,662	50,248	50,096	45,045	42,489	41,593
BALANCING NYCA	12,771	7,013	3,051	11,270	11,672	12,446	351
BALANCING NON-NYCA	2,028	6,232	3,352	2,143	7,504	2,070	10,364
BALANCING WHEELS	760	310	1,150	(480)	(1,450)	0	200
BALANCING VIRTUAL	(59,696)	(48,662)	(50,248)	(50,096)	(45,045)	(42,489)	(41,593)
UFE/LOSSES	10,740	12,088	12,276	11,746	11,914	11,744	10,256
	17	18	19	20	21	22	23
DAM NYCA	403,087	404,651	409,716	400,354	385,440	358,802	349,001
DAM NON-NYCA	5,495	5,219	9,260	9,369	8,487	4,107	5,769
DAM WHEELS	1,200	1,200	1,200	3,200	4,000	3,400	4,000
DAM VIRTUAL	41,510	41,812	46,035	49,375	48,684	54,002	53,927
BALANCING NYCA	(5,692)	(7,774)	(6,218)	16,064	13,955	147	1,762
BALANCING NON-NYCA	13,732	11,103	9,452	8,093	11,007	19,400	13,105
BALANCING WHEELS	445	100	0	(1,049)	(2,900)	0	50
BALANCING VIRTUAL	(41,510)	(41,812)	(46,035)	(49,375)	(48,684)	(54,002)	(53,927)
UFE/LOSSES	11,580	11,718	10,581	10,629	10,258	8,732	9,390
	24	25	26	27	28	29	30
DAM NYCA	400,804	395,772	385,570	391,781	384,778	351,340	355,793
DAM NON-NYCA	9,734	8,022	9,248	8,302	6,370	7,206	4,964
DAM WHEELS	1,515	1,515	3,315	3,315	3,315	4,933	6,000
DAM VIRTUAL	51,707	54,476	56,031	59,678	58,239	57,126	38,943
BALANCING NYCA	(4,250)	(2,993)	11,635	767	1,617	4,248	5,427
BALANCING NON-NYCA	11,496	12,519	3,207	4,051	5,107	3,829	7,673
BALANCING WHEELS	(400)	(51)	(1,800)	(1,799)	(1,800)	(933)	(844)
BALANCING VIRTUAL	(51,707)	(54,476)	(56,031)	(59,678)	(58,239)	(57,126)	(38,943)
UFE/LOSSES	7,448	9,430	9,106	11,094	11,377	8,693	8,884
	31						
DAM NYCA	414,833						
DAM NON-NYCA	13,434						
DAM WHEELS	3,115						
DAM VIRTUAL	49,819						
BALANCING NYCA	(3,429)						
BALANCING NON-NYCA	7,725						
BALANCING WHEELS	(1,600)						
BALANCING VIRTUAL	(49,819)						
UFE/LOSSES	10,352						



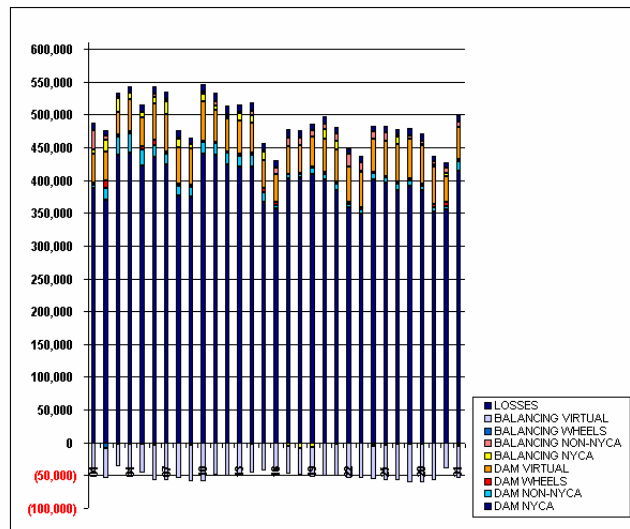
FOR DISCUSSION PURPOSES ONLY



SETTLEMENTS REPORT  
MARCH 2003 CLOSEOUT SETTLEMENT  
MARCH 6, 2006

12-MONTH CLOSEOUT SETTLEMENT MARKET WITHDRAWALS ANALYSIS

	MONDAY	TUESDAY	WEDNESDAY	THURSDAY	FRIDAY	SATURDAY	SUNDAY
						1	2
DAM NYCA						388,332	369,835
DAM NON-NYCA						4,400	17,815
DAM WHEELS						4,000	11,400
DAM VIRTUAL						43,978	44,395
BALANCING NYCA						6,808	17,358
BALANCING NON-NYCA						28,988	6,775
BALANCING WHEELS						(339)	(9,163)
BALANCING VIRTUAL						(43,978)	(44,395)
UFE/LOSSES						11,206	9,046
	3	4	5	6	7	8	9
DAM NYCA	437,967	442,256	422,527	435,095	424,549	376,772	375,320
DAM NON-NYCA	28,820	29,340	25,056	18,254	15,896	14,742	14,106
DAM WHEELS	3,315	3,315	3,315	8,115	2,190	3,600	3,600
DAM VIRTUAL	34,517	48,669	44,522	54,877	57,496	54,395	54,915
BALANCING NYCA	20,662	9,749	8,232	11,197	20,520	13,051	7,756
BALANCING NON-NYCA	791	32	(179)	3,790	985	1,751	(2,617)
BALANCING WHEELS	(1,800)	(1,914)	(1,400)	(3,167)	1,310	(656)	(900)
BALANCING VIRTUAL	(34,517)	(48,669)	(44,522)	(54,877)	(57,496)	(54,395)	(54,915)
UFE/LOSSES	7,875	10,135	11,260	11,821	12,412	11,628	9,487
	10	11	12	13	14	15	16
DAM NYCA	439,844	438,738	423,950	421,055	421,190	367,410	357,354
DAM NON-NYCA	18,793	18,472	17,661	15,473	17,057	14,482	4,990
DAM WHEELS	1,515	1,515	2,150	3,915	3,600	6,200	4,800
DAM VIRTUAL	59,696	48,662	50,248	50,096	45,045	42,489	41,593
BALANCING NYCA	12,601	6,849	2,888	11,105	11,522	12,300	196
BALANCING NON-NYCA	2,028	6,232	3,352	2,143	7,504	2,070	10,364
BALANCING WHEELS	760	310	1,150	(480)	(1,450)	0	200
BALANCING VIRTUAL	(59,696)	(48,662)	(50,248)	(50,096)	(45,045)	(42,489)	(41,593)
UFE/LOSSES	10,898	12,252	12,445	12,004	12,058	11,887	10,398
	17	18	19	20	21	22	23
DAM NYCA	403,087	404,651	409,716	400,354	385,440	358,802	348,001
DAM NON-NYCA	5,495	5,219	9,260	9,368	8,487	4,107	5,769
DAM WHEELS	1,200	1,200	1,200	3,200	4,000	3,400	4,000
DAM VIRTUAL	41,510	41,812	46,035	49,375	46,684	54,002	53,927
BALANCING NYCA	(5,818)	(7,302)	(6,362)	15,917	13,816	(3)	1,609
BALANCING NON-NYCA	13,732	11,103	9,452	8,093	11,007	19,490	13,105
BALANCING WHEELS	445	100	0	(1,049)	(2,800)	0	50
BALANCING VIRTUAL	(41,510)	(41,812)	(46,035)	(49,375)	(46,684)	(54,002)	(53,927)
UFE/LOSSES	11,705	11,842	10,728	10,974	10,398	8,874	9,534
	24	25	26	27	28	29	30
DAM NYCA	400,804	395,772	395,570	391,781	384,778	351,340	355,783
DAM NON-NYCA	9,734	8,022	9,248	8,302	6,370	7,206	4,964
DAM WHEELS	1,515	1,515	3,315	3,315	3,315	4,933	6,000
DAM VIRTUAL	51,707	54,476	56,031	59,678	58,239	57,126	38,943
BALANCING NYCA	(4,390)	(3,138)	11,479	612	1,432	3,806	5,049
BALANCING NON-NYCA	11,486	12,519	3,207	4,051	5,107	3,929	7,673
BALANCING WHEELS	(400)	(51)	(1,800)	(1,799)	(1,800)	(933)	(844)
BALANCING VIRTUAL	(51,707)	(54,476)	(56,031)	(59,678)	(58,239)	(57,126)	(38,943)
UFE/LOSSES	7,591	9,574	9,268	11,253	11,563	9,141	9,269
	31						
DAM NYCA	414,833						
DAM NON-NYCA	13,434						
DAM WHEELS	3,115						
DAM VIRTUAL	48,819						
BALANCING NYCA	(9,652)						
BALANCING NON-NYCA	7,725						
BALANCING WHEELS	(1,600)						
BALANCING VIRTUAL	(48,819)						
UFE/LOSSES	10,575						



FOR DISCUSSION PURPOSES ONLY



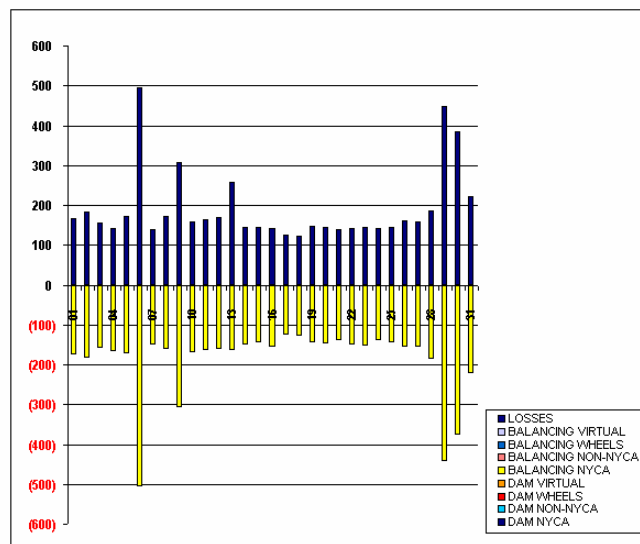
# SETTLEMENTS REPORT

## MARCH 2003 CLOSEOUT SETTLEMENT

### MARCH 6, 2006

## CLOSEOUT SETTLEMENT MARKET WITHDRAWALS DELTA ANALYSIS

	MONDAY	TUESDAY	WEDNESDAY	THURSDAY	FRIDAY	SATURDAY	SUNDAY
						1	2
DAM NYCA						0	0
DAM NON-NYCA						0	0
DAM WHEELS						0	0
DAM VIRTUAL						0	0
BALANCING NYCA						(174)	(183)
BALANCING NON-NYCA						0	0
BALANCING WHEELS						0	0
BALANCING VIRTUAL						0	0
UFE/LOSSES						168	182
	3	4	5	6	7	8	9
DAM NYCA	0	0	0	0	0	0	0
DAM NON-NYCA	0	0	0	0	0	0	0
DAM WHEELS	0	0	0	0	0	0	0
DAM VIRTUAL	0	0	0	0	0	0	0
BALANCING NYCA	(158)	(166)	(173)	(505)	(152)	(160)	(308)
BALANCING NON-NYCA	0	0	0	0	0	0	0
BALANCING WHEELS	0	0	0	0	0	0	0
BALANCING VIRTUAL	0	0	0	0	0	0	0
UFE/LOSSES	158	142	172	494	140	174	307
	10	11	12	13	14	15	16
DAM NYCA	0	0	0	0	0	0	0
DAM NON-NYCA	0	0	0	0	0	0	0
DAM WHEELS	0	0	0	0	0	0	0
DAM VIRTUAL	0	0	0	0	0	0	0
BALANCING NYCA	(170)	(164)	(163)	(165)	(150)	(146)	(155)
BALANCING NON-NYCA	0	0	0	0	0	0	0
BALANCING WHEELS	0	0	0	0	0	0	0
BALANCING VIRTUAL	0	0	0	0	0	0	0
UFE/LOSSES	158	164	169	258	144	144	141
	17	18	19	20	21	22	23
DAM NYCA	0	0	0	0	0	0	0
DAM NON-NYCA	0	0	0	0	0	0	0
DAM WHEELS	0	0	0	0	0	0	0
DAM VIRTUAL	0	0	0	0	0	0	0
BALANCING NYCA	(126)	(128)	(144)	(147)	(139)	(150)	(152)
BALANCING NON-NYCA	0	0	0	0	0	0	0
BALANCING WHEELS	0	0	0	0	0	0	0
BALANCING VIRTUAL	0	0	0	0	0	0	0
UFE/LOSSES	125	124	147	145	139	142	144
	24	25	26	27	28	29	30
DAM NYCA	0	0	0	0	0	0	0
DAM NON-NYCA	0	0	0	0	0	0	0
DAM WHEELS	0	0	0	0	0	0	0
DAM VIRTUAL	0	0	0	0	0	0	0
BALANCING NYCA	(140)	(145)	(156)	(155)	(185)	(442)	(378)
BALANCING NON-NYCA	0	0	0	0	0	0	0
BALANCING WHEELS	0	0	0	0	0	0	0
BALANCING VIRTUAL	0	0	0	0	0	0	0
UFE/LOSSES	141	144	161	158	186	448	386
	31						
DAM NYCA	0						
DAM NON-NYCA	0						
DAM WHEELS	0						
DAM VIRTUAL	0						
BALANCING NYCA	(223)						
BALANCING NON-NYCA	0						
BALANCING WHEELS	0						
BALANCING VIRTUAL	0						
UFE/LOSSES	223						

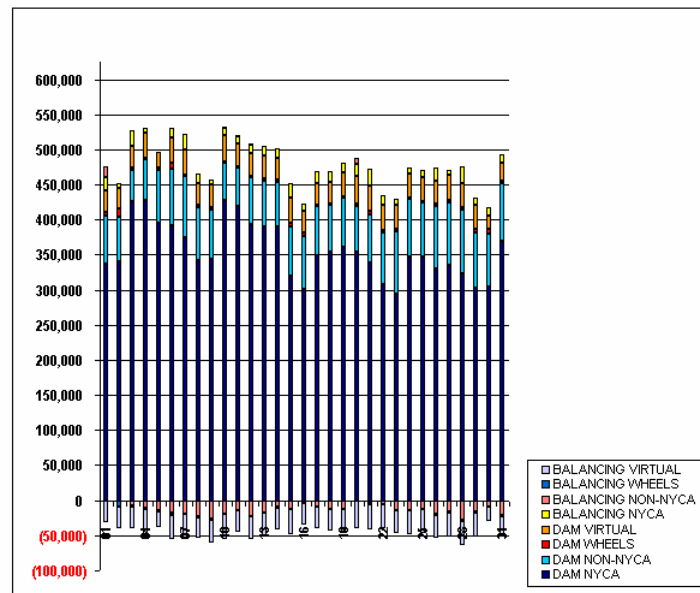


FOR DISCUSSION PURPOSES ONLY

SETTLEMENTS REPORT  
MARCH 2003 CLOSEOUT SETTLEMENT  
MARCH 6, 2006

4-MONTH SETTLEMENT ADJUSTMENT MARKET SUPPLY ANALYSIS

	MONDAY	TUESDAY	WEDNESDAY	THURSDAY	FRIDAY	SATURDAY	SUNDAY
						1	2
DAM NYCA						337,387	340,615
DAM NON-NYCA						68,861	63,434
DAM WHEELS						4,000	11,400
DAM VIRTUAL						31,348	30,081
BALANCING NYCA						18,255	6,390
BALANCING NON-NYCA						15,237	15
BALANCING WHEELS						(339)	(9,163)
BALANCING VIRTUAL						(31,348)	(30,081)
	3	4	5	6	7	8	9
DAM NYCA	425,508	427,559	395,090	391,577	375,564	341,687	343,852
DAM NON-NYCA	45,003	57,788	75,962	81,533	86,764	75,982	70,050
DAM WHEELS	3,315	3,315	3,315	8,115	2,190	3,600	3,600
DAM VIRTUAL	30,852	35,488	21,402	35,095	35,717	30,435	32,111
BALANCING NYCA	22,173	6,509	613	14,276	21,345	13,221	6,761
BALANCING NON-NYCA	(7,342)	(10,497)	(14,944)	(17,393)	(19,726)	(23,136)	(26,795)
BALANCING WHEELS	(1,800)	(1,914)	(1,400)	(3,167)	1,310	(658)	(900)
BALANCING VIRTUAL	(30,852)	(35,488)	(21,402)	(35,095)	(35,717)	(30,435)	(32,111)
	10	11	12	13	14	15	16
DAM NYCA	427,376	418,756	394,179	389,955	389,376	320,228	301,020
DAM NON-NYCA	54,052	56,060	66,358	65,605	64,266	69,243	75,926
DAM WHEELS	1,515	1,515	2,150	3,915	3,600	6,200	4,800
DAM VIRTUAL	36,911	31,388	31,951	31,790	30,600	36,015	30,222
BALANCING NYCA	11,232	11,640	12,817	13,188	14,348	20,517	11,128
BALANCING NON-NYCA	(19,110)	(14,288)	(23,590)	(17,737)	(8,828)	(12,014)	(4,759)
BALANCING WHEELS	760	310	1,150	(480)	(1,450)	0	200
BALANCING VIRTUAL	(36,911)	(31,388)	(31,951)	(31,790)	(30,600)	(36,015)	(30,222)
	17	18	19	20	21	22	23
DAM NYCA	348,256	354,572	360,950	353,629	338,590	308,293	294,402
DAM NON-NYCA	71,831	66,621	70,063	65,796	69,210	74,143	88,552
DAM WHEELS	1,200	1,200	1,200	3,200	4,000	3,400	4,000
DAM VIRTUAL	30,939	31,146	34,664	39,801	35,888	34,586	33,293
BALANCING NYCA	16,556	15,518	14,050	16,904	24,036	14,412	9,828
BALANCING NON-NYCA	(8,441)	(12,142)	(12,272)	8,380	(2,688)	(5,570)	(13,756)
BALANCING WHEELS	445	100	0	(1,049)	(2,800)	0	50
BALANCING VIRTUAL	(30,939)	(31,146)	(34,664)	(39,801)	(35,888)	(34,586)	(33,293)
	24	25	26	27	28	29	30
DAM NYCA	347,588	347,176	330,455	335,392	322,775	303,460	304,438
DAM NON-NYCA	82,872	77,526	88,757	89,497	90,977	77,972	75,645
DAM WHEELS	1,515	1,515	3,315	3,315	3,315	4,933	6,000
DAM VIRTUAL	33,693	33,911	32,058	34,989	35,648	34,751	20,164
BALANCING NYCA	8,563	10,640	19,510	6,947	22,533	10,752	11,154
BALANCING NON-NYCA	(13,790)	(12,842)	(20,206)	(15,841)	(27,237)	(16,768)	(8,496)
BALANCING WHEELS	(400)	(51)	(1,800)	(1,799)	(1,800)	(933)	(844)
BALANCING VIRTUAL	(33,693)	(33,911)	(32,058)	(34,989)	(35,648)	(34,751)	(20,164)
	31						
DAM NYCA	370,357						
DAM NON-NYCA	81,833						
DAM WHEELS	3,115						
DAM VIRTUAL	26,014						
BALANCING NYCA	11,427						
BALANCING NON-NYCA	(20,702)						
BALANCING WHEELS	(1,600)						
BALANCING VIRTUAL	(26,014)						



FOR DISCUSSION PURPOSES ONLY

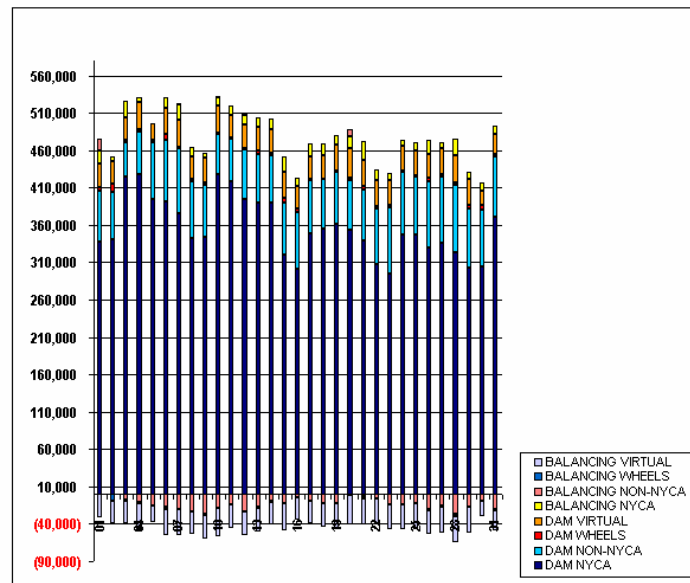
# SETTLEMENTS REPORT

## MARCH 2003 CLOSEOUT SETTLEMENT

### MARCH 6, 2006

## 12-MONTH CLOSEOUT SETTLEMENT MARKET SUPPLY ANALYSIS

	MONDAY	TUESDAY	WEDNESDAY	THURSDAY	FRIDAY	SATURDAY	SUNDAY
						1	2
DAM NYCA						337,387	340,615
DAM NON-NYCA						68,861	63,434
DAM WHEELS						4,000	11,400
DAM VIRTUAL						31,348	30,061
BALANCING NYCA						18,249	6,389
BALANCING NON-NYCA						15,237	15
BALANCING WHEELS						(339)	(9,163)
BALANCING VIRTUAL						(31,348)	(30,061)
	3	4	5	6	7	8	9
DAM NYCA	425,508	427,559	395,090	391,577	375,564	341,687	343,852
DAM NON-NYCA	45,003	57,788	75,962	81,533	86,764	75,982	70,050
DAM WHEELS	3,315	3,315	3,315	8,115	2,190	3,600	3,600
DAM VIRTUAL	30,852	35,488	21,402	35,095	35,717	30,435	32,111
BALANCING NYCA	22,171	6,486	612	14,265	21,333	13,235	6,759
BALANCING NON-NYCA	(7,342)	(10,497)	(14,944)	(17,393)	(19,726)	(23,136)	(26,785)
BALANCING WHEELS	(1,800)	(1,914)	(1,400)	(3,167)	1,310	(656)	(900)
BALANCING VIRTUAL	(30,852)	(35,488)	(21,402)	(35,095)	(35,717)	(30,435)	(32,111)
	10	11	12	13	14	15	16
DAM NYCA	427,376	418,756	394,179	389,955	389,376	320,228	301,020
DAM NON-NYCA	54,052	56,060	66,358	65,605	64,266	69,243	75,926
DAM WHEELS	1,515	1,515	2,150	3,915	3,600	6,200	4,800
DAM VIRTUAL	36,911	31,398	31,951	31,790	30,600	36,015	30,222
BALANCING NYCA	11,220	11,640	12,823	13,281	14,342	20,515	11,115
BALANCING NON-NYCA	(19,110)	(14,288)	(23,590)	(17,737)	(8,828)	(12,014)	(4,759)
BALANCING WHEELS	760	310	1,150	(480)	(1,450)	0	200
BALANCING VIRTUAL	(36,911)	(31,398)	(31,951)	(31,790)	(30,600)	(36,015)	(30,222)
	17	18	19	20	21	22	23
DAM NYCA	348,256	354,572	360,950	353,629	338,590	308,293	294,402
DAM NON-NYCA	71,831	66,621	70,063	65,796	69,210	74,143	88,552
DAM WHEELS	1,200	1,200	1,200	3,200	4,000	3,400	4,000
DAM VIRTUAL	30,939	31,146	34,664	39,801	35,888	34,586	33,293
BALANCING NYCA	16,555	15,514	14,053	16,902	24,036	14,404	9,820
BALANCING NON-NYCA	(8,441)	(12,142)	(12,272)	8,380	(2,688)	(5,570)	(13,756)
BALANCING WHEELS	445	100	0	(1,049)	(2,800)	0	50
BALANCING VIRTUAL	(30,939)	(31,146)	(34,664)	(39,801)	(35,888)	(34,586)	(33,293)
	24	25	26	27	28	29	30
DAM NYCA	347,588	347,176	330,455	335,392	322,775	303,460	304,438
DAM NON-NYCA	62,672	77,526	88,757	89,497	90,977	77,972	75,645
DAM WHEELS	1,515	1,515	3,315	3,315	3,315	4,933	6,000
DAM VIRTUAL	33,693	33,911	32,058	34,989	35,648	34,751	20,164
BALANCING NYCA	8,564	10,639	19,515	6,950	22,534	10,758	11,162
BALANCING NON-NYCA	(13,790)	(12,842)	(20,206)	(15,841)	(27,237)	(16,768)	(8,496)
BALANCING WHEELS	(400)	(51)	(1,800)	(1,799)	(1,800)	(933)	(844)
BALANCING VIRTUAL	(33,693)	(33,911)	(32,058)	(34,989)	(35,648)	(34,751)	(20,164)
	31						
DAM NYCA	370,357						
DAM NON-NYCA	81,833						
DAM WHEELS	3,115						
DAM VIRTUAL	26,014						
BALANCING NYCA	11,428						
BALANCING NON-NYCA	(20,702)						
BALANCING WHEELS	(1,600)						
BALANCING VIRTUAL	(26,014)						

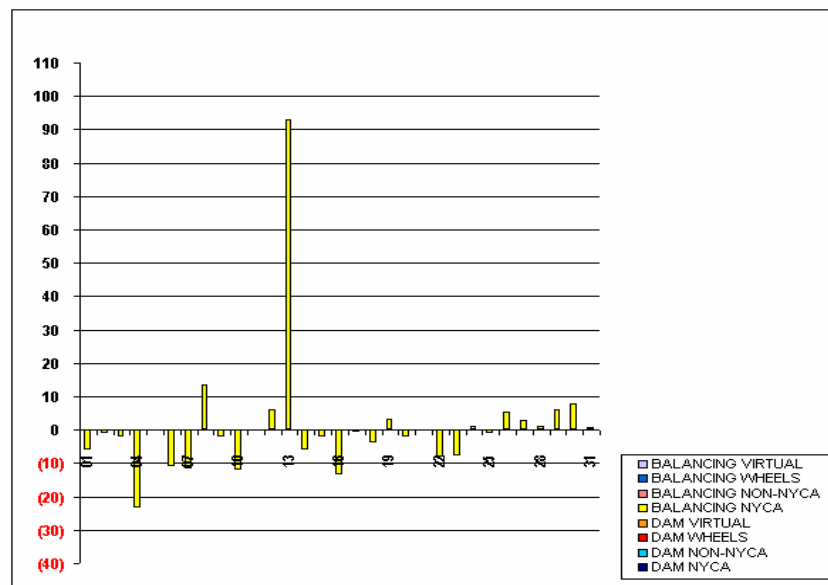


FOR DISCUSSION PURPOSES ONLY

SETTLEMENTS REPORT  
MARCH 2003 CLOSEOUT SETTLEMENT  
MARCH 6, 2006

CLOSEOUT SETTLEMENT MARKET SUPPLY DELTA ANALYSIS

	MONDAY	TUESDAY	WEDNESDAY	THURSDAY	FRIDAY	SATURDAY	SUNDAY
						<b>1</b>	<b>2</b>
DAM NYCA						0	0
DAM NON-NYCA						0	0
DAM WHEELS						0	0
DAM VIRTUAL						0	0
BALANCING NYCA						(6)	(1)
BALANCING NON-NYCA						0	0
BALANCING WHEELS						0	0
BALANCING VIRTUAL						0	0
	<b>3</b>	<b>4</b>	<b>5</b>	<b>6</b>	<b>7</b>	<b>8</b>	<b>9</b>
DAM NYCA	0	0	0	0	0	0	0
DAM NON-NYCA	0	0	0	0	0	0	0
DAM WHEELS	0	0	0	0	0	0	0
DAM VIRTUAL	0	0	0	0	0	0	0
BALANCING NYCA	(2)	(23)	(0)	(11)	(12)	14	(2)
BALANCING NON-NYCA	0	0	0	0	0	0	0
BALANCING WHEELS	0	0	0	0	0	0	0
BALANCING VIRTUAL	0	0	0	0	0	0	0
	<b>10</b>	<b>11</b>	<b>12</b>	<b>13</b>	<b>14</b>	<b>15</b>	<b>16</b>
DAM NYCA	0	0	0	0	0	0	0
DAM NON-NYCA	0	0	0	0	0	0	0
DAM WHEELS	0	0	0	0	0	0	0
DAM VIRTUAL	0	0	0	0	0	0	0
BALANCING NYCA	(12)	0	6	93	(6)	(2)	(13)
BALANCING NON-NYCA	0	0	0	0	0	0	0
BALANCING WHEELS	0	0	0	0	0	0	0
BALANCING VIRTUAL	0	0	0	0	0	0	0
	<b>17</b>	<b>18</b>	<b>19</b>	<b>20</b>	<b>21</b>	<b>22</b>	<b>23</b>
DAM NYCA	0	0	0	0	0	0	0
DAM NON-NYCA	0	0	0	0	0	0	0
DAM WHEELS	0	0	0	0	0	0	0
DAM VIRTUAL	0	0	0	0	0	0	0
BALANCING NYCA	(1)	(4)	3	(2)	(0)	(8)	(8)
BALANCING NON-NYCA	0	0	0	0	0	0	0
BALANCING WHEELS	0	0	0	0	0	0	0
BALANCING VIRTUAL	0	0	0	0	0	0	0
	<b>24</b>	<b>25</b>	<b>26</b>	<b>27</b>	<b>28</b>	<b>29</b>	<b>30</b>
DAM NYCA	0	0	0	0	0	0	0
DAM NON-NYCA	0	0	0	0	0	0	0
DAM WHEELS	0	0	0	0	0	0	0
DAM VIRTUAL	0	0	0	0	0	0	0
BALANCING NYCA	1	(1)	5	3	1	6	8
BALANCING NON-NYCA	0	0	0	0	0	0	0
BALANCING WHEELS	0	0	0	0	0	0	0
BALANCING VIRTUAL	0	0	0	0	0	0	0
	<b>31</b>						
DAM NYCA	0						
DAM NON-NYCA	0						
DAM WHEELS	0						
DAM VIRTUAL	0						
BALANCING NYCA	1						
BALANCING NON-NYCA	0						
BALANCING WHEELS	0						
BALANCING VIRTUAL	0						



FOR DISCUSSION PURPOSES ONLY