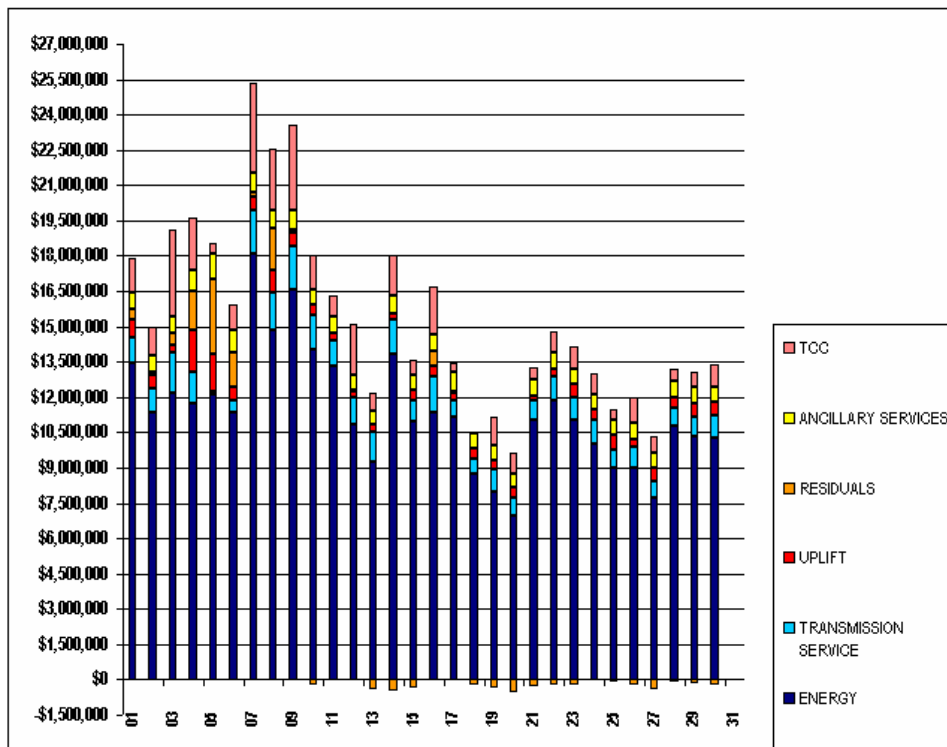


SETTLEMENTS REPORT  
APRIL 2003 CLOSEOUT SETTLEMENT  
MARCH 6, 2006

4-MONTH SETTLEMENT ADJUSTMENT MARKET COSTS ANALYSIS

	MONDAY	TUESDAY	WEDNESDAY	THURSDAY	FRIDAY	SATURDAY	SUNDAY
		1	2	3	4	5	6
ENERGY		\$13,470,023.13	\$11,368,366.68	\$12,205,423.47	\$11,763,484.05	\$12,138,551.94	\$11,340,446.06
TRANSMISSION SERVICE		\$1,063,386.74	\$1,024,421.84	\$1,681,894.37	\$1,291,579.20	\$76,013.26	\$525,083.30
UPLIFT		\$729,827.12	\$520,539.52	\$354,359.01	\$1,799,167.87	\$1,588,223.97	\$540,838.61
RESIDUALS		\$490,779.80	\$158,446.29	\$511,546.25	\$1,630,749.66	\$3,238,638.06	\$1,479,970.29
ANCILLARY SERVICES		\$679,595.57	\$714,036.07	\$653,189.04	\$900,686.47	\$1,066,478.98	\$877,972.87
TCC		\$1,468,048.58	\$1,190,338.99	\$3,736,752.42	\$2,204,460.36	\$436,675.06	\$1,094,194.74
	7	8	9	10	11	12	13
ENERGY	\$18,113,696.71	\$14,846,821.86	\$16,558,783.31	\$14,002,302.18	\$13,321,388.03	\$10,824,025.59	\$9,227,294.07
TRANSMISSION SERVICE	\$1,840,796.77	\$1,612,220.22	\$1,883,610.03	\$1,493,350.07	\$1,069,260.51	\$1,146,836.87	\$1,267,995.73
UPLIFT	\$585,537.14	\$928,836.42	\$564,466.29	\$435,882.28	\$317,842.69	\$277,767.63	\$353,276.35
RESIDUALS	\$137,827.47	\$1,767,906.30	\$82,304.02	(\$198,962.06)	\$27,725.00	\$63,130.63	(\$414,274.32)
ANCILLARY SERVICES	\$838,597.42	\$786,614.85	\$865,541.21	\$661,822.96	\$700,594.36	\$618,342.98	\$590,256.32
TCC	\$3,840,088.56	\$2,621,262.89	\$3,618,832.36	\$1,445,457.57	\$881,657.78	\$2,193,338.59	\$754,646.40
	14	15	16	17	18	19	20
ENERGY	\$13,861,458.43	\$10,999,100.90	\$11,334,071.50	\$11,128,450.62	\$8,765,352.64	\$7,994,212.74	\$6,990,078.07
TRANSMISSION SERVICE	\$1,449,302.78	\$874,654.23	\$1,530,456.06	\$735,045.58	\$618,046.47	\$964,809.31	\$736,067.11
UPLIFT	\$242,824.65	\$435,484.95	\$433,662.19	\$334,226.57	\$423,946.70	\$356,577.68	\$448,074.97
RESIDUALS	(\$485,091.94)	(\$366,229.59)	\$665,171.81	\$12,861.25	(\$233,444.38)	(\$376,084.92)	(\$536,383.89)
ANCILLARY SERVICES	\$754,724.44	\$638,110.05	\$717,469.99	\$831,344.86	\$635,299.68	\$635,372.84	\$580,527.89
TCC	\$1,741,120.01	\$657,298.25	\$2,027,167.61	\$408,568.62	\$100,784.60	\$1,235,946.40	\$850,786.34
	21	22	23	24	25	26	27
ENERGY	\$11,012,189.36	\$11,868,093.10	\$11,001,119.63	\$10,045,593.04	\$9,005,916.25	\$9,012,968.78	\$7,706,742.87
TRANSMISSION SERVICE	\$831,022.93	\$1,030,032.42	\$1,009,703.18	\$992,322.50	\$763,353.27	\$897,678.52	\$741,862.18
UPLIFT	\$238,137.87	\$311,840.45	\$533,988.44	\$422,687.02	\$616,677.52	\$300,143.72	\$534,229.41
RESIDUALS	(\$273,201.04)	(\$250,280.68)	(\$218,125.28)	(\$25,926.69)	(\$83,450.36)	(\$206,541.18)	(\$412,330.99)
ANCILLARY SERVICES	\$640,966.11	\$667,355.07	\$644,869.88	\$650,830.67	\$628,137.09	\$677,404.72	\$658,576.12
TCC	\$508,549.78	\$933,303.03	\$952,860.67	\$899,424.59	\$459,316.38	\$1,100,999.73	\$688,166.80
	28	29	30				
ENERGY	\$10,788,315.20	\$10,329,861.49	\$10,243,617.59				
TRANSMISSION SERVICE	\$755,559.05	\$801,389.19	\$997,426.25				
UPLIFT	\$426,807.43	\$619,348.71	\$564,678.78				
RESIDUALS	(\$86,395.25)	(\$177,165.09)	(\$258,893.92)				
ANCILLARY SERVICES	\$740,471.04	\$671,141.97	\$655,136.58				
TCC	\$456,969.79	\$633,884.85	\$919,489.41				

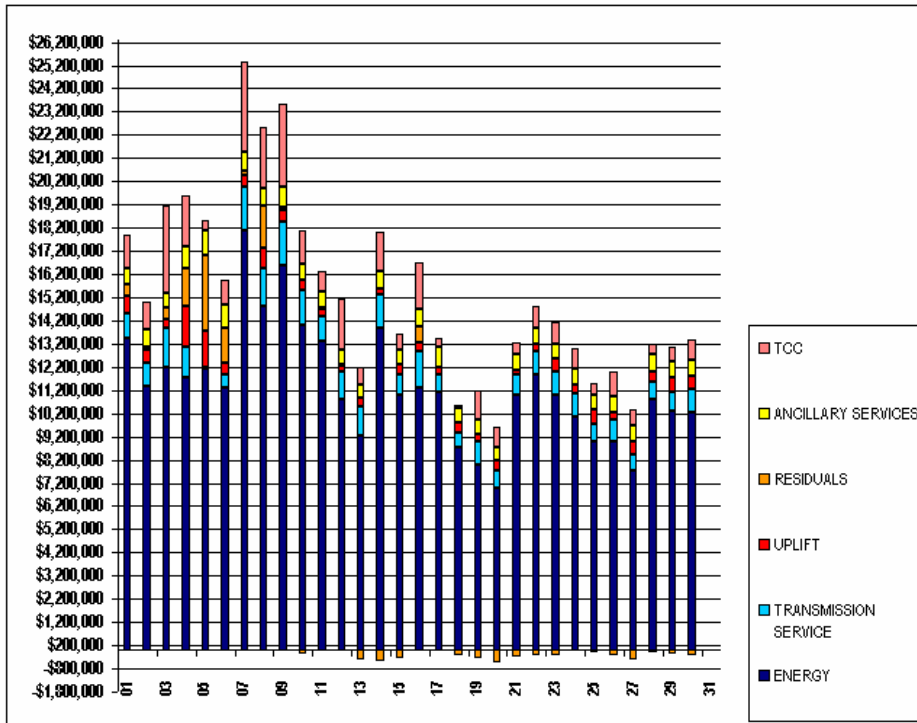


FOR DISCUSSION PURPOSES ONLY

SETTLEMENTS REPORT  
APRIL 2003 CLOSEOUT SETTLEMENT  
MARCH 6, 2006

12-MONTH CLOSEOUT SETTLEMENT MARKET COSTS ANALYSIS

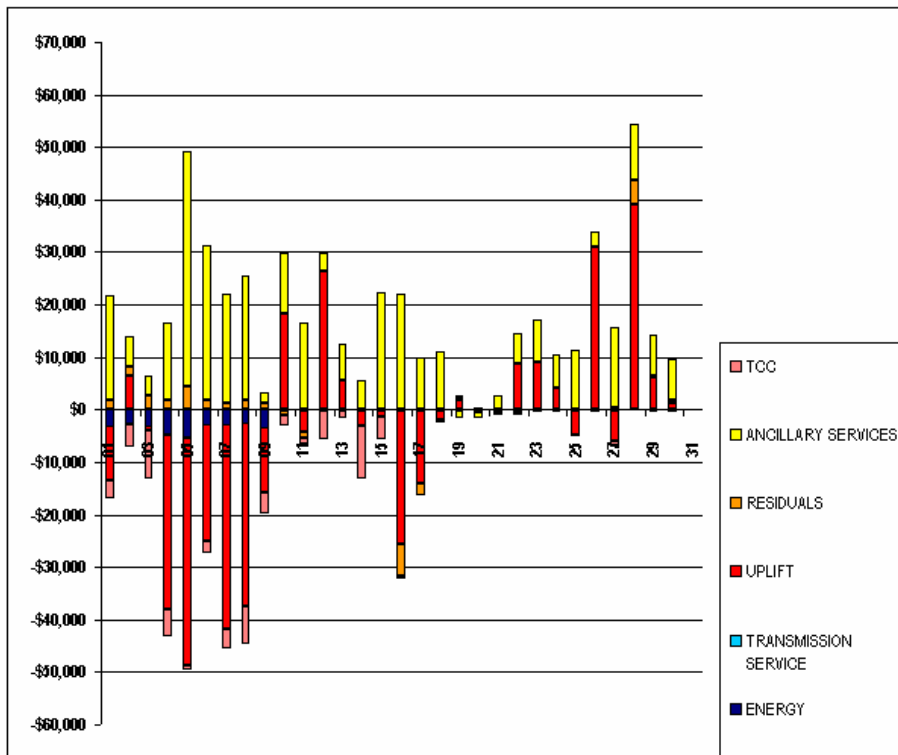
	MONDAY	TUESDAY	WEDNESDAY	THURSDAY	FRIDAY	SATURDAY	SUNDAY
		1	2	3	4	5	6
ENERGY		\$13,466,958.53	\$11,365,810.84	\$12,202,420.66	\$11,758,918.66	\$12,133,384.95	\$11,337,789.37
TRANSMISSION SERVICE		\$1,063,242.57	\$1,024,278.97	\$1,681,749.46	\$1,291,448.05	\$75,899.42	\$524,970.96
UPLIFT		\$719,534.72	\$526,939.28	\$353,420.26	\$1,765,824.33	\$1,545,754.56	\$518,808.26
RESIDUALS		\$492,488.69	\$160,277.88	\$514,338.04	\$1,632,616.86	\$3,243,038.55	\$1,481,782.93
ANCILLARY SERVICES		\$699,652.07	\$719,837.95	\$656,727.00	\$915,458.19	\$1,111,351.27	\$1,007,501.17
TCC		\$1,464,566.63	\$1,186,023.19	\$3,727,718.75	\$2,199,269.68	\$435,754.37	\$1,091,795.79
	7	8	9	10	11	12	13
ENERGY	\$18,110,982.21	\$14,844,275.93	\$16,555,500.21	\$14,002,302.30	\$13,321,387.96	\$10,824,025.34	\$9,227,294.18
TRANSMISSION SERVICE	\$1,840,709.79	\$1,612,135.53	\$1,883,514.52	\$1,493,208.30	\$1,069,122.72	\$1,146,745.15	\$1,267,909.82
UPLIFT	\$546,410.34	\$894,042.73	\$551,973.29	\$454,053.44	\$313,725.65	\$304,212.98	\$358,855.73
RESIDUALS	\$139,162.07	\$1,769,861.92	\$83,487.35	(\$199,774.62)	\$26,707.35	\$62,981.41	(\$414,406.69)
ANCILLARY SERVICES	\$859,269.09	\$810,179.42	\$867,482.16	\$673,398.52	\$717,175.98	\$621,843.41	\$597,231.94
TCC	\$3,836,455.34	\$2,613,877.74	\$3,614,923.73	\$1,443,377.38	\$880,399.90	\$2,188,029.49	\$753,200.45
	14	15	16	17	18	19	20
ENERGY	\$13,861,452.18	\$10,999,100.92	\$11,334,071.54	\$11,128,455.58	\$8,765,352.66	\$7,994,212.63	\$6,990,077.81
TRANSMISSION SERVICE	\$1,449,060.29	\$874,505.47	\$1,530,322.46	\$734,871.13	\$617,884.13	\$964,591.43	\$735,699.08
UPLIFT	\$240,011.09	\$434,388.11	\$408,171.65	\$320,414.70	\$422,058.09	\$358,377.41	\$448,048.37
RESIDUALS	(\$485,144.69)	(\$366,479.85)	\$659,180.72	\$10,534.96	(\$233,866.90)	(\$375,594.24)	(\$536,501.42)
ANCILLARY SERVICES	\$760,357.47	\$660,419.19	\$739,654.04	\$841,195.72	\$646,228.33	\$633,885.52	\$579,461.93
TCC	\$1,731,031.61	\$653,223.29	\$2,026,622.26	\$408,534.06	\$100,778.84	\$1,236,406.97	\$851,302.10
	21	22	23	24	25	26	27
ENERGY	\$11,012,187.34	\$11,868,092.96	\$11,001,119.70	\$10,045,592.70	\$9,005,916.74	\$9,012,968.60	\$7,706,743.07
TRANSMISSION SERVICE	\$830,607.98	\$1,029,511.86	\$1,009,324.41	\$992,075.88	\$763,220.23	\$897,320.44	\$741,741.31
UPLIFT	\$237,656.78	\$320,730.82	\$543,159.50	\$426,707.73	\$612,117.48	\$331,161.91	\$528,238.80
RESIDUALS	(\$273,448.24)	(\$250,602.91)	(\$218,198.00)	(\$26,186.94)	(\$83,806.70)	(\$206,716.04)	(\$412,019.75)
ANCILLARY SERVICES	\$643,729.96	\$673,009.25	\$652,911.09	\$657,244.74	\$639,561.27	\$680,195.22	\$673,980.48
TCC	\$508,520.98	\$933,222.63	\$952,779.79	\$899,359.39	\$459,313.50	\$1,100,991.74	\$687,343.32
	28	29	30				
ENERGY	\$10,788,477.72	\$10,329,861.42	\$10,243,616.77				
TRANSMISSION SERVICE	\$755,495.71	\$800,999.92	\$997,195.75				
UPLIFT	\$465,599.43	\$625,485.75	\$565,936.58				
RESIDUALS	(\$81,692.81)	(\$176,914.87)	(\$258,410.24)				
ANCILLARY SERVICES	\$751,272.26	\$679,049.16	\$662,967.13				
TCC	\$456,946.85	\$633,881.73	\$919,315.29				



SETTLEMENTS REPORT  
APRIL 2003 CLOSEOUT SETTLEMENT  
MARCH 6, 2006

CLOSEOUT SETTLEMENT MARKET COSTS DELTA ANALYSIS

	MONDAY	TUESDAY	WEDNESDAY	THURSDAY	FRIDAY	SATURDAY	SUNDAY
		1	2	3	4	5	6
ENERGY		(\$3,064.60)	(\$2,555.84)	(\$3,002.81)	(\$4,565.39)	(\$5,166.99)	(\$2,656.69)
TRANSMISSION SERVICE		(\$144.17)	(\$142.87)	(\$144.91)	(\$131.15)	(\$113.84)	(\$112.34)
UPLIFT		(\$10,292.40)	\$6,399.76	(\$938.75)	(\$33,343.54)	(\$43,469.41)	(\$22,232.35)
RESIDUALS		\$1,708.89	\$1,831.59	\$2,791.79	\$1,867.20	\$4,400.49	\$1,812.64
ANCILLARY SERVICES		\$20,056.50	\$5,801.88	\$3,537.96	\$14,771.72	\$44,872.29	\$29,528.30
TCC		(\$3,481.95)	(\$4,315.80)	(\$9,033.67)	(\$5,190.68)	(\$820.69)	(\$2,398.95)
	7	8	9	10	11	12	13
ENERGY	(\$2,714.50)	(\$2,545.93)	(\$3,283.10)	\$0.12	(\$0.07)	(\$0.25)	\$0.11
TRANSMISSION SERVICE	(\$86.98)	(\$84.69)	(\$95.51)	(\$141.77)	(\$137.79)	(\$91.72)	(\$85.91)
UPLIFT	(\$39,126.80)	(\$34,793.69)	(\$12,493.00)	\$18,171.16	(\$4,117.04)	\$26,445.35	\$5,579.38
RESIDUALS	\$1,334.60	\$1,955.62	\$1,183.33	(\$812.56)	(\$1,017.65)	(\$149.22)	(\$132.37)
ANCILLARY SERVICES	\$20,671.67	\$23,564.57	\$1,940.95	\$11,575.56	\$16,581.62	\$3,500.43	\$6,975.62
TCC	(\$3,633.22)	(\$7,385.15)	(\$3,908.63)	(\$2,080.19)	(\$1,257.88)	(\$5,309.10)	(\$1,445.95)
	14	15	16	17	18	19	20
ENERGY	(\$6.25)	\$0.02	\$0.04	\$4.96	\$0.02	(\$0.11)	(\$0.26)
TRANSMISSION SERVICE	(\$242.49)	(\$148.76)	(\$133.60)	(\$174.45)	(\$162.34)	(\$217.88)	(\$368.03)
UPLIFT	(\$2,813.56)	(\$1,096.84)	(\$25,490.54)	(\$13,811.87)	(\$1,888.61)	\$1,799.73	(\$26.60)
RESIDUALS	(\$52.75)	(\$250.26)	(\$5,991.09)	(\$2,326.29)	(\$422.52)	\$490.68	(\$117.53)
ANCILLARY SERVICES	\$5,633.03	\$22,309.14	\$22,184.05	\$9,850.86	\$10,928.65	(\$1,487.32)	(\$1,065.96)
TCC	(\$10,068.40)	(\$4,074.96)	(\$545.35)	(\$34.56)	(\$5.76)	\$460.57	\$515.76
	21	22	23	24	25	26	27
ENERGY	(\$2.02)	(\$0.14)	\$0.07	(\$0.34)	\$0.49	(\$0.18)	\$0.20
TRANSMISSION SERVICE	(\$414.95)	(\$520.56)	(\$378.77)	(\$246.62)	(\$133.04)	(\$358.08)	(\$120.87)
UPLIFT	(\$481.09)	\$8,890.37	\$9,171.06	\$4,020.71	(\$4,560.04)	\$31,018.19	(\$5,990.61)
RESIDUALS	(\$247.20)	(\$322.23)	(\$72.72)	(\$260.25)	(\$356.34)	(\$174.86)	\$311.24
ANCILLARY SERVICES	\$2,763.85	\$5,654.18	\$8,041.21	\$6,414.07	\$11,424.18	\$2,790.50	\$15,404.36
TCC	(\$28.80)	(\$80.40)	(\$80.88)	(\$65.20)	(\$2.88)	(\$7.99)	(\$823.48)
	28	29	30				
ENERGY	\$162.52	(\$0.07)	(\$0.82)				
TRANSMISSION SERVICE	(\$63.34)	(\$389.27)	(\$230.50)				
UPLIFT	\$98,792.00	\$6,137.04	\$1,257.60				
RESIDUALS	\$4,702.44	\$250.22	\$483.68				
ANCILLARY SERVICES	\$10,801.22	\$7,907.19	\$7,830.55				
TCC	(\$22.94)	(\$3.12)	(\$174.12)				

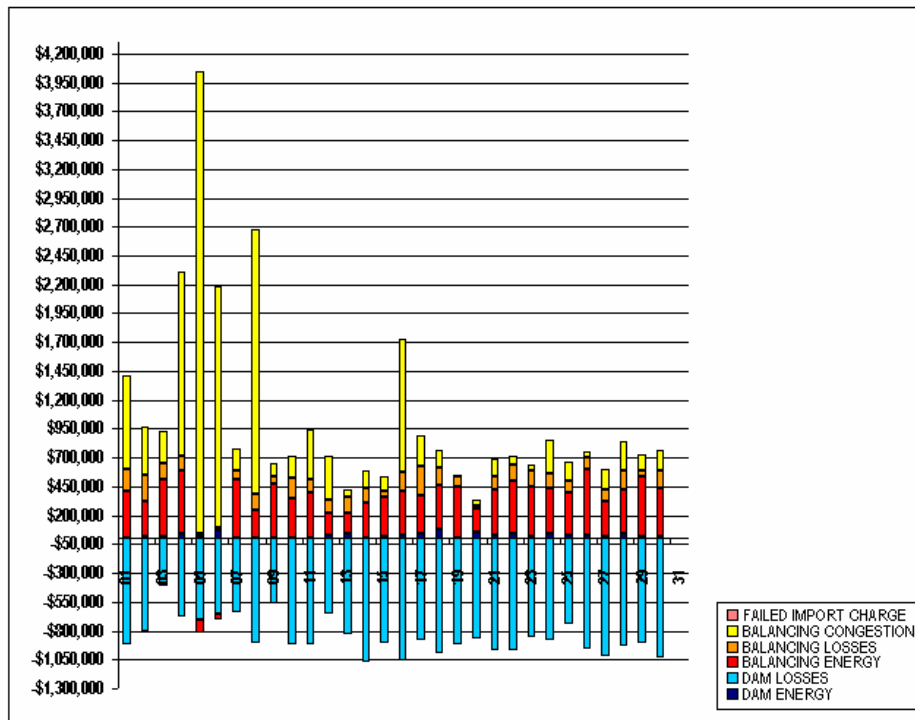


FOR DISCUSSION PURPOSES ONLY

SETTLEMENTS REPORT  
APRIL 2003 CLOSEOUT SETTLEMENT  
MARCH 6, 2006

4-MONTH SETTLEMENT ADJUSTMENT MARKET RESIDUALS ANALYSIS

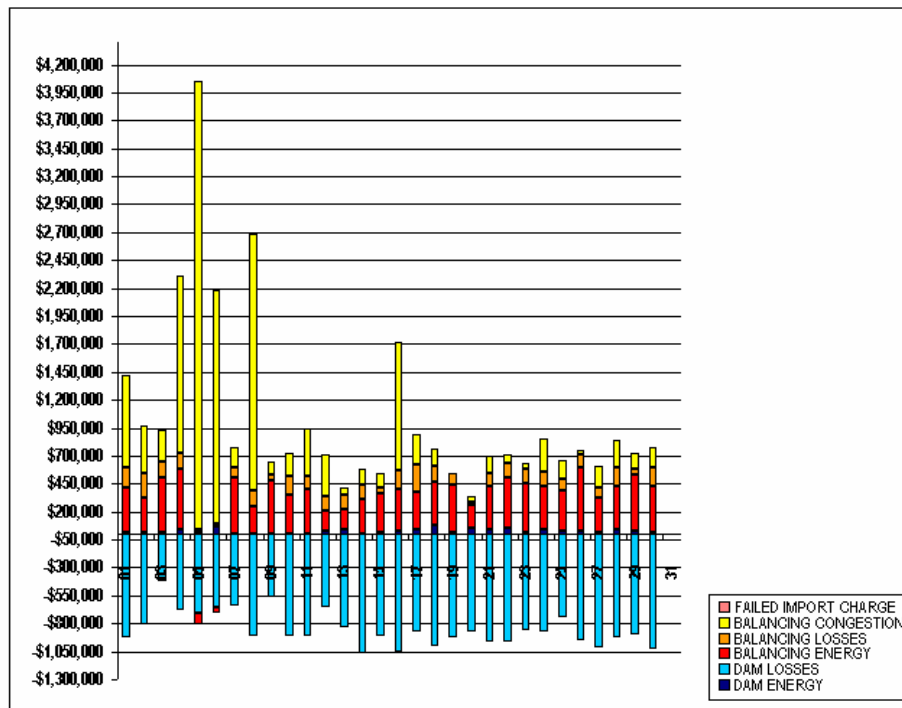
	MONDAY	TUESDAY	WEDNESDAY	THURSDAY	FRIDAY	SATURDAY	SUNDAY
		1	2	3	4	5	6
DAM ENERGY		\$10,325.62	\$11,652.72	\$11,363.23	\$42,342.90	\$21,002.06	\$63,100.04
DAM LOSSES		(\$923,914.93)	(\$809,418.13)	(\$418,506.30)	(\$680,653.91)	(\$701,873.02)	(\$653,152.44)
BALANCING ENERGY		\$399,457.55	\$316,358.38	\$497,679.45	\$543,663.36	(\$111,285.46)	(\$49,279.08)
BALANCING LOSSES		\$189,152.59	\$217,549.57	\$139,688.76	\$134,364.12	\$20,369.36	\$25,342.75
BALANCING CONGESTION		\$815,758.97	\$422,303.75	\$281,321.11	\$1,591,033.19	\$4,010,425.12	\$2,093,959.02
FAILED IMPORT CHARGE		\$0.00	\$0.00	\$0.00	\$0.00	\$0.00	\$0.00
	7	8	9	10	11	12	13
DAM ENERGY	\$3,191.57	\$2,892.72	\$5,161.06	\$1,605.88	\$8,668.88	\$27,078.21	\$41,639.37
DAM LOSSES	(\$638,519.99)	(\$910,819.13)	(\$567,918.84)	(\$919,182.85)	(\$916,040.85)	(\$649,456.88)	(\$832,844.47)
BALANCING ENERGY	\$504,544.19	\$248,764.34	\$469,903.86	\$349,188.32	\$389,946.33	\$187,985.84	\$184,307.39
BALANCING LOSSES	\$84,295.90	\$131,594.32	\$57,821.62	\$169,688.27	\$114,297.10	\$118,566.34	\$127,461.45
BALANCING CONGESTION	\$184,315.80	\$2,295,474.05	\$117,336.32	\$199,738.32	\$430,853.54	\$378,957.12	\$65,161.94
FAILED IMPORT CHARGE	\$0.00	\$0.00	\$0.00	\$0.00	\$0.00	\$0.00	\$0.00
	14	15	16	17	18	19	20
DAM ENERGY	\$3,235.19	\$20,852.20	\$29,314.09	\$39,304.67	\$82,874.77	\$9,601.44	\$52,828.17
DAM LOSSES	(\$1,068,075.39)	(\$908,041.58)	(\$1,058,376.47)	(\$876,265.59)	(\$1,000,020.21)	(\$925,777.59)	(\$875,388.05)
BALANCING ENERGY	\$308,755.62	\$338,459.87	\$378,213.74	\$334,144.27	\$380,727.23	\$435,687.96	\$201,481.66
BALANCING LOSSES	\$123,357.61	\$55,266.41	\$166,356.92	\$256,552.91	\$147,942.71	\$94,657.96	\$32,678.79
BALANCING CONGESTION	\$147,635.03	\$127,233.51	\$1,149,663.53	\$259,124.99	\$155,031.12	\$9,745.31	\$52,015.54
FAILED IMPORT CHARGE	\$0.00	\$0.00	\$0.00	\$0.00	\$0.00	\$0.00	\$0.00
	21	22	23	24	25	26	27
DAM ENERGY	\$36,618.30	\$49,131.58	\$19,144.37	\$40,586.57	\$34,007.65	\$28,289.04	\$13,058.54
DAM LOSSES	(\$965,924.81)	(\$865,452.83)	(\$858,551.12)	(\$878,341.36)	(\$744,478.65)	(\$957,191.87)	(\$1,015,672.52)
BALANCING ENERGY	\$385,967.44	\$452,187.25	\$431,135.99	\$391,659.82	\$358,067.31	\$567,731.20	\$308,659.28
BALANCING LOSSES	\$118,736.11	\$139,457.33	\$135,629.94	\$128,943.92	\$101,910.56	\$110,104.15	\$99,321.66
BALANCING CONGESTION	\$151,401.92	\$74,395.99	\$54,515.54	\$291,224.36	\$167,042.77	\$44,526.30	\$182,302.05
FAILED IMPORT CHARGE	\$0.00	\$0.00	\$0.00	\$0.00	\$0.00	\$0.00	\$0.00
	28	29	30				
DAM ENERGY	\$37,637.34	\$22,617.85	\$21,409.81				
DAM LOSSES	(\$927,987.88)	(\$902,738.95)	(\$1,028,785.26)				
BALANCING ENERGY	\$389,463.16	\$512,334.56	\$411,527.02				
BALANCING LOSSES	\$162,424.16	\$46,569.52	\$158,609.20				
BALANCING CONGESTION	\$252,067.97	\$144,051.93	\$178,345.31				
FAILED IMPORT CHARGE	\$0.00	\$0.00	\$0.00				



SETTLEMENTS REPORT  
APRIL 2003 CLOSEOUT SETTLEMENT  
MARCH 6, 2006

12-MONTH CLOSEOUT SETTLEMENT MARKET RESIDUALS ANALYSIS

	MONDAY	TUESDAY	WEDNESDAY	THURSDAY	FRIDAY	SATURDAY	SUNDAY
		1	2	3	4	5	6
DAM ENERGY		\$10,326.19	\$11,653.14	\$11,363.32	\$42,344.85	\$21,002.68	\$63,100.04
DAM LOSSES		(\$924,040.96)	(\$809,518.43)	(\$418,565.25)	(\$680,733.85)	(\$702,027.32)	(\$653,297.80)
BALANCING ENERGY		\$400,334.94	\$317,434.14	\$499,509.26	\$544,119.39	(\$111,129.06)	(\$49,677.98)
BALANCING LOSSES		\$189,329.65	\$217,685.14	\$139,841.72	\$134,479.99	\$20,430.71	\$25,488.63
BALANCING CONGESTION		\$816,538.87	\$423,023.89	\$282,188.99	\$1,592,406.48	\$4,014,761.54	\$2,096,170.04
FAILED IMPORT CHARGE		\$0.00	\$0.00	\$0.00	\$0.00	\$0.00	\$0.00
	7	8	9	10	11	12	13
DAM ENERGY	\$3,191.61	\$2,892.75	\$5,161.19	\$1,605.89	\$8,668.93	\$27,079.69	\$41,639.37
DAM LOSSES	(\$638,985.06)	(\$810,953.29)	(\$568,490.26)	(\$819,219.28)	(\$916,044.06)	(\$649,486.31)	(\$832,844.47)
BALANCING ENERGY	\$505,527.82	\$249,696.38	\$471,281.00	\$348,680.76	\$389,240.48	\$187,884.51	\$184,184.90
BALANCING LOSSES	\$84,327.50	\$131,548.33	\$57,997.44	\$169,679.70	\$114,305.83	\$118,565.14	\$127,451.62
BALANCING CONGESTION	\$185,100.20	\$2,296,677.75	\$117,537.98	\$199,478.31	\$430,536.17	\$378,938.38	\$65,161.89
FAILED IMPORT CHARGE	\$0.00	\$0.00	\$0.00	\$0.00	\$0.00	\$0.00	\$0.00
	14	15	16	17	18	19	20
DAM ENERGY	\$3,235.10	\$20,852.43	\$29,314.11	\$39,305.29	\$82,878.14	\$9,601.86	\$52,828.17
DAM LOSSES	(\$1,068,118.27)	(\$908,077.73)	(\$1,058,669.45)	(\$876,296.30)	(\$1,000,060.02)	(\$825,800.10)	(\$875,388.05)
BALANCING ENERGY	\$308,494.39	\$338,180.47	\$376,690.81	\$332,015.63	\$380,335.73	\$436,167.79	\$201,380.54
BALANCING LOSSES	\$123,606.77	\$55,346.14	\$166,426.84	\$256,409.14	\$147,947.41	\$84,700.31	\$32,670.84
BALANCING CONGESTION	\$147,637.32	\$127,218.84	\$1,145,418.41	\$259,101.20	\$155,031.84	\$9,735.90	\$52,007.08
FAILED IMPORT CHARGE	\$0.00	\$0.00	\$0.00	\$0.00	\$0.00	\$0.00	\$0.00
	21	22	23	24	25	26	27
DAM ENERGY	\$36,819.70	\$49,134.29	\$19,145.43	\$40,588.73	\$34,009.05	\$28,289.04	\$13,058.54
DAM LOSSES	(\$965,959.75)	(\$965,492.01)	(\$858,583.29)	(\$878,372.10)	(\$744,510.10)	(\$957,191.87)	(\$1,015,672.52)
BALANCING ENERGY	\$385,910.72	\$452,141.84	\$431,014.70	\$391,587.56	\$357,984.16	\$567,587.51	\$308,871.94
BALANCING LOSSES	\$118,575.80	\$139,235.73	\$135,711.07	\$128,854.54	\$101,670.61	\$110,093.13	\$99,334.89
BALANCING CONGESTION	\$151,405.29	\$74,377.24	\$54,514.09	\$291,154.33	\$167,039.58	\$44,506.15	\$182,387.40
FAILED IMPORT CHARGE	\$0.00	\$0.00	\$0.00	\$0.00	\$0.00	\$0.00	\$0.00
	28	29	30				
DAM ENERGY	\$37,638.40	\$22,618.28	\$21,410.15				
DAM LOSSES	(\$928,006.30)	(\$902,755.16)	(\$1,028,828.09)				
BALANCING ENERGY	\$393,533.32	\$512,382.24	\$411,681.17				
BALANCING LOSSES	\$162,938.24	\$46,785.78	\$158,955.22				
BALANCING CONGESTION	\$252,203.53	\$144,053.99	\$178,371.31				
FAILED IMPORT CHARGE	\$0.00	\$0.00	\$0.00				

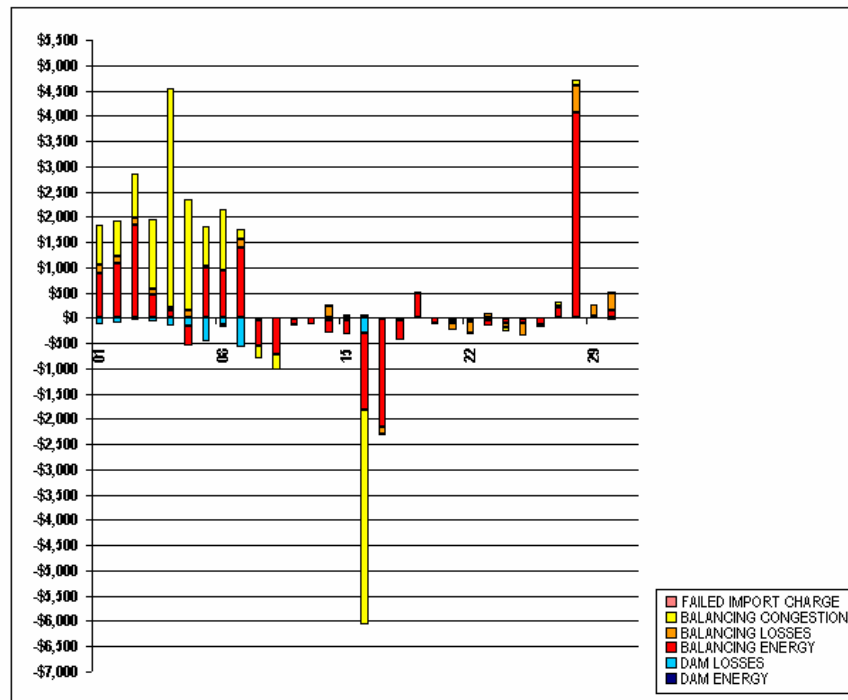


FOR DISCUSSION PURPOSES ONLY

SETTLEMENTS REPORT  
APRIL 2003 CLOSEOUT SETTLEMENT  
MARCH 6, 2006

CLOSEOUT SETTLEMENT MARKET RESIDUALS DELTA ANALYSIS

	MONDAY	TUESDAY	WEDNESDAY	THURSDAY	FRIDAY	SATURDAY	SUNDAY
		1	2	3	4	5	6
DAM ENERGY		\$0.57	\$0.42	\$0.09	\$1.95	\$0.62	\$0.00
DAM LOSSES		(\$126.03)	(\$100.30)	(\$58.95)	(\$79.94)	(\$154.30)	(\$145.36)
BALANCING ENERGY		\$877.39	\$1,075.76	\$1,829.81	\$456.03	\$156.40	(\$398.90)
BALANCING LOSSES		\$177.06	\$135.57	\$152.96	\$115.87	\$61.35	\$145.88
BALANCING CONGESTION		\$779.90	\$720.14	\$867.88	\$1,373.29	\$4,336.42	\$2,211.02
FAILED IMPORT CHARGE		\$0.00	\$0.00	\$0.00	\$0.00	\$0.00	\$0.00
	7	8	9	10	11	12	13
DAM ENERGY	\$0.04	\$0.03	\$0.13	\$0.01	\$0.05	\$1.48	\$0.00
DAM LOSSES	(\$465.07)	(\$134.16)	(\$571.42)	(\$36.43)	(\$3.21)	(\$29.43)	\$0.00
BALANCING ENERGY	\$983.63	\$932.04	\$1,377.14	(\$507.56)	(\$705.85)	(\$101.33)	(\$122.49)
BALANCING LOSSES	\$31.60	(\$45.99)	\$175.82	(\$8.57)	\$8.73	(\$1.20)	(\$9.83)
BALANCING CONGESTION	\$784.40	\$1,203.70	\$201.66	(\$260.01)	(\$317.37)	(\$18.74)	(\$0.05)
FAILED IMPORT CHARGE	\$0.00	\$0.00	\$0.00	\$0.00	\$0.00	\$0.00	\$0.00
	14	15	16	17	18	19	20
DAM ENERGY	(\$0.09)	\$0.23	\$0.02	\$0.62	\$3.37	\$0.42	\$0.00
DAM LOSSES	(\$42.88)	(\$36.15)	(\$292.98)	(\$30.71)	(\$39.81)	(\$22.51)	\$0.00
BALANCING ENERGY	(\$261.23)	(\$279.40)	(\$1,522.93)	(\$2,128.64)	(\$391.50)	\$479.83	(\$101.12)
BALANCING LOSSES	\$249.16	\$79.73	\$69.92	(\$143.77)	\$4.70	\$42.35	(\$7.95)
BALANCING CONGESTION	\$2.29	(\$14.67)	(\$4,245.12)	(\$23.79)	\$0.72	(\$9.41)	(\$8.46)
FAILED IMPORT CHARGE	\$0.00	\$0.00	\$0.00	\$0.00	\$0.00	\$0.00	\$0.00
	21	22	23	24	25	26	27
DAM ENERGY	\$1.40	\$2.71	\$1.06	\$2.16	\$1.40	\$0.00	\$0.00
DAM LOSSES	(\$34.94)	(\$39.18)	(\$32.17)	(\$30.74)	(\$31.45)	\$0.00	\$0.00
BALANCING ENERGY	(\$56.72)	(\$45.41)	(\$121.29)	(\$72.26)	(\$83.15)	(\$143.69)	\$212.66
BALANCING LOSSES	(\$160.31)	(\$221.60)	\$81.13	(\$89.38)	(\$239.95)	(\$11.02)	\$13.23
BALANCING CONGESTION	\$3.37	(\$18.75)	(\$1.45)	(\$70.03)	(\$3.19)	(\$20.15)	\$85.35
FAILED IMPORT CHARGE	\$0.00	\$0.00	\$0.00	\$0.00	\$0.00	\$0.00	\$0.00
	28	29	30				
DAM ENERGY	\$1.06	\$0.43	\$0.34				
DAM LOSSES	(\$18.42)	(\$16.21)	(\$42.83)				
BALANCING ENERGY	\$4,070.16	\$47.68	\$154.15				
BALANCING LOSSES	\$514.08	\$216.26	\$346.02				
BALANCING CONGESTION	\$135.56	\$2.06	\$26.00				
FAILED IMPORT CHARGE	\$0.00	\$0.00	\$0.00				

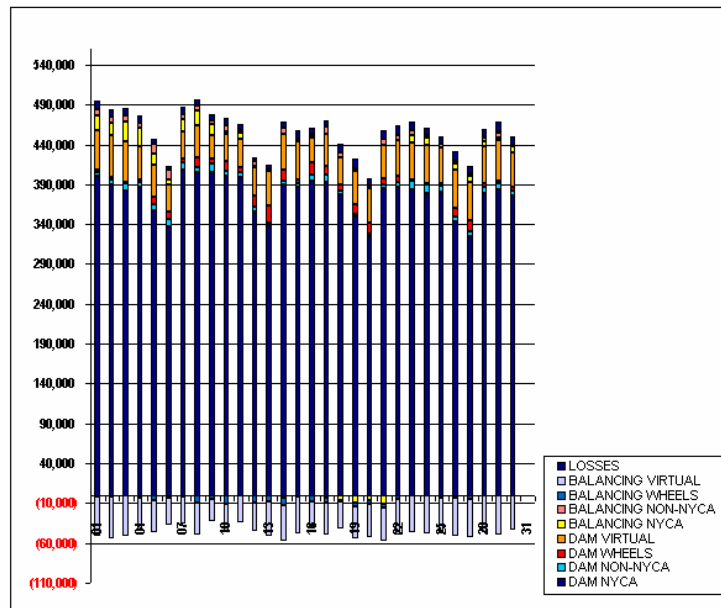


FOR DISCUSSION PURPOSES ONLY

SETTLEMENTS REPORT  
APRIL 2003 CLOSEOUT SETTLEMENT  
MARCH 6, 2006

4-MONTH SETTLEMENT ADJUSTMENT MARKET WITHDRAWALS ANALYSIS

	MONDAY	TUESDAY	WEDNESDAY	THURSDAY	FRIDAY	SATURDAY	SUNDAY
		1	2	3	4	5	6
DAM NYCA		400,124	389,814	382,107	386,124	357,851	337,940
DAM NON-NYCA		5,561	5,829	8,650	6,299	7,752	8,141
DAM WHEELS		2,800	3,295	1,775	4,161	9,203	9,043
DAM VIRTUAL		49,499	52,926	50,917	41,251	39,685	34,031
BALANCING NYCA		18,454	15,444	25,910	22,827	13,864	6,842
BALANCING NON-NYCA		7,984	7,300	6,728	6,764	11,950	12,685
BALANCING WHEELS		(1,200)	(1,695)	(175)	(2,561)	(6,603)	(3,366)
BALANCING VIRTUAL		(49,499)	(52,926)	(50,917)	(41,251)	(39,685)	(34,031)
UFE/LOSSES		10,616	10,000	9,504	8,409	7,027	4,315
	7	8	9	10	11	12	13
DAM NYCA	407,699	405,442	404,975	400,600	398,706	356,208	338,986
DAM NON-NYCA	10,540	6,561	10,657	5,759	7,222	6,431	3,516
DAM WHEELS	3,856	11,200	7,342	12,246	6,000	13,001	21,400
DAM VIRTUAL	33,733	40,089	27,969	34,279	34,724	35,814	43,196
BALANCING NYCA	16,268	18,768	15,079	4,113	8,242	1,080	568
BALANCING NON-NYCA	6,405	6,551	3,748	7,671	3,076	6,061	700
BALANCING WHEELS	(1,789)	(9,334)	(5,342)	(10,887)	0	(9,518)	(7,700)
BALANCING VIRTUAL	(33,733)	(40,089)	(27,969)	(34,279)	(34,724)	(35,814)	(43,196)
UFE/LOSSES	8,176	7,794	8,374	8,515	8,063	5,891	6,229
	14	15	16	17	18	19	20
DAM NYCA	390,040	386,305	394,241	393,456	377,767	349,541	324,576
DAM NON-NYCA	4,569	4,531	7,359	8,077	4,900	3,657	3,448
DAM WHEELS	14,377	5,591	16,231	11,893	6,496	12,387	13,983
DAM VIRTUAL	44,876	46,852	30,615	39,891	35,097	41,694	42,545
BALANCING NYCA	(2,940)	(932)	1,878	(3,030)	(6,431)	(8,927)	(6,270)
BALANCING NON-NYCA	6,834	4,377	2,207	8,506	5,594	3,355	4,234
BALANCING WHEELS	(9,600)	0	(7,850)	(6,533)	(1,006)	(4,440)	(4,698)
BALANCING VIRTUAL	(44,876)	(46,852)	(30,615)	(39,891)	(35,097)	(41,694)	(42,545)
UFE/LOSSES	8,239	9,560	8,429	7,981	11,261	11,070	8,725
	21	22	23	24	25	26	27
DAM NYCA	384,925	386,785	384,090	379,171	380,207	343,341	324,988
DAM NON-NYCA	5,021	6,571	9,979	10,564	7,747	6,369	6,261
DAM WHEELS	7,787	6,632	1,600	1,600	3,600	10,800	13,392
DAM VIRTUAL	41,563	45,066	47,265	48,241	44,959	47,361	48,050
BALANCING NYCA	(10,901)	(234)	9,177	8,507	(3,078)	7,688	8,503
BALANCING NON-NYCA	7,104	7,332	6,152	2,924	3,969	3,054	2,925
BALANCING WHEELS	(4,250)	(4,400)	200	100	0	(4,000)	(4,587)
BALANCING VIRTUAL	(41,563)	(45,066)	(47,265)	(48,241)	(44,959)	(47,361)	(48,050)
UFE/LOSSES	11,303	11,197	10,327	10,093	9,667	13,435	9,098
	28	29	30				
DAM NYCA	379,310	383,785	375,532				
DAM NON-NYCA	8,031	7,193	6,647				
DAM WHEELS	3,962	4,000	4,383				
DAM VIRTUAL	46,638	49,940	43,516				
BALANCING NYCA	5,585	3,158	7,113				
BALANCING NON-NYCA	5,297	7,126	2,745				
BALANCING WHEELS	1,082	1,600	0				
BALANCING VIRTUAL	(46,638)	(49,940)	(43,516)				
UFE/LOSSES	9,655	12,213	10,277				



FOR DISCUSSION PURPOSES ONLY



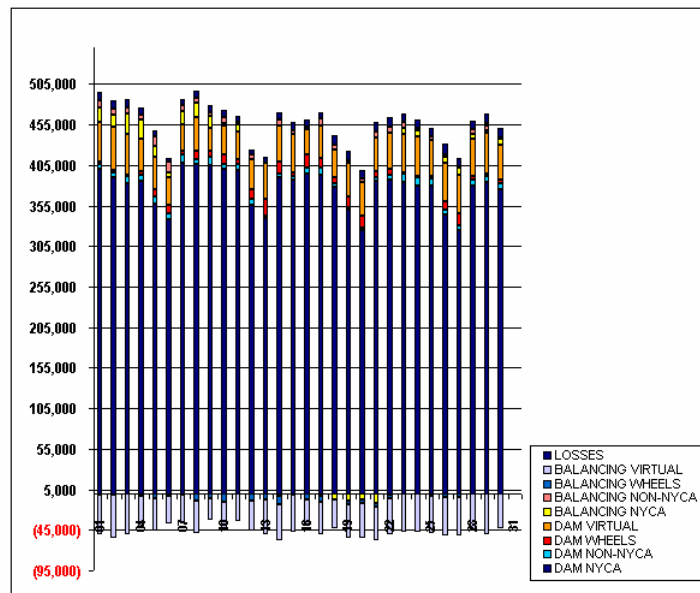
# SETTLEMENTS REPORT

## APRIL 2003 CLOSEOUT SETTLEMENT

### MARCH 6, 2006

## 12-MONTH CLOSEOUT SETTLEMENT MARKET WITHDRAWALS ANALYSIS

	MONDAY	TUESDAY	WEDNESDAY	THURSDAY	FRIDAY	SATURDAY	SUNDAY
		1	2	3	4	5	6
DAM NYCA		400,124	389,814	382,107	386,124	357,851	337,940
DAM NON-NYCA		5,561	5,829	8,650	6,299	7,752	8,141
DAM WHEELS		2,800	3,295	1,775	4,161	9,203	9,043
DAM VIRTUAL		49,499	52,926	50,917	41,251	39,685	34,031
BALANCING NYCA		18,141	15,133	25,595	22,542	13,616	6,598
BALANCING NON-NYCA		7,984	7,300	6,728	6,764	11,950	12,685
BALANCING WHEELS		(1,200)	(1,695)	(175)	(2,561)	(6,603)	(3,366)
BALANCING VIRTUAL		(49,499)	(52,926)	(50,917)	(41,251)	(39,685)	(34,031)
UFE/LOSSES		10,917	10,299	9,819	6,673	7,268	4,548
	7	8	9	10	11	12	13
DAM NYCA	407,699	405,442	404,975	400,600	398,706	356,208	338,986
DAM NON-NYCA	10,540	6,561	10,657	5,759	7,222	6,431	3,516
DAM WHEELS	3,856	11,200	7,342	12,246	6,000	13,001	21,400
DAM VIRTUAL	33,733	40,089	27,969	34,279	34,724	35,814	43,196
BALANCING NYCA	16,079	18,584	14,871	3,805	7,942	881	382
BALANCING NON-NYCA	6,405	6,551	3,748	7,671	3,076	6,081	700
BALANCING WHEELS	(1,789)	(9,334)	(5,342)	(10,867)	0	(9,518)	(7,700)
BALANCING VIRTUAL	(33,733)	(40,089)	(27,969)	(34,279)	(34,724)	(35,814)	(43,196)
UFE/LOSSES	8,351	7,976	8,563	8,815	8,351	6,091	6,416
	14	15	16	17	18	19	20
DAM NYCA	390,040	386,305	394,241	393,456	377,767	349,541	324,576
DAM NON-NYCA	4,569	4,531	7,359	8,077	4,900	3,657	3,448
DAM WHEELS	14,377	5,591	16,231	11,893	6,496	12,387	13,983
DAM VIRTUAL	44,876	46,852	30,615	39,891	35,097	41,694	42,545
BALANCING NYCA	(3,467)	(1,255)	1,588	(3,410)	(6,783)	(9,401)	(7,070)
BALANCING NON-NYCA	6,834	4,377	2,207	8,506	5,594	3,355	4,234
BALANCING WHEELS	(9,600)	0	(7,850)	(6,533)	(1,006)	(4,440)	(4,698)
BALANCING VIRTUAL	(44,876)	(46,852)	(30,615)	(39,891)	(35,097)	(41,694)	(42,545)
UFE/LOSSES	8,763	9,879	8,888	8,348	11,607	11,557	9,524
	21	22	23	24	25	26	27
DAM NYCA	384,925	386,785	384,090	379,171	380,207	343,341	324,988
DAM NON-NYCA	5,021	6,571	9,979	10,564	7,747	6,369	6,261
DAM WHEELS	7,787	6,632	1,600	1,600	3,600	10,800	13,392
DAM VIRTUAL	41,563	45,066	47,265	48,241	44,959	47,361	48,050
BALANCING NYCA	(11,803)	(1,366)	8,353	7,971	(3,367)	6,910	8,320
BALANCING NON-NYCA	7,104	7,332	6,152	2,924	3,969	3,054	2,925
BALANCING WHEELS	(4,250)	(4,400)	200	100	0	(4,000)	(4,587)
BALANCING VIRTUAL	(41,563)	(45,066)	(47,265)	(48,241)	(44,959)	(47,361)	(48,050)
UFE/LOSSES	12,206	12,331	11,150	10,631	9,958	14,213	9,380
	28	29	30				
DAM NYCA	379,310	383,785	375,532				
DAM NON-NYCA	8,031	7,193	6,647				
DAM WHEELS	3,962	4,000	4,383				
DAM VIRTUAL	46,638	49,940	43,516				
BALANCING NYCA	5,447	2,312	6,612				
BALANCING NON-NYCA	5,297	7,126	2,745				
BALANCING WHEELS	1,082	1,600	0				
BALANCING VIRTUAL	(46,638)	(49,940)	(43,516)				
UFE/LOSSES	9,892	13,060	10,783				



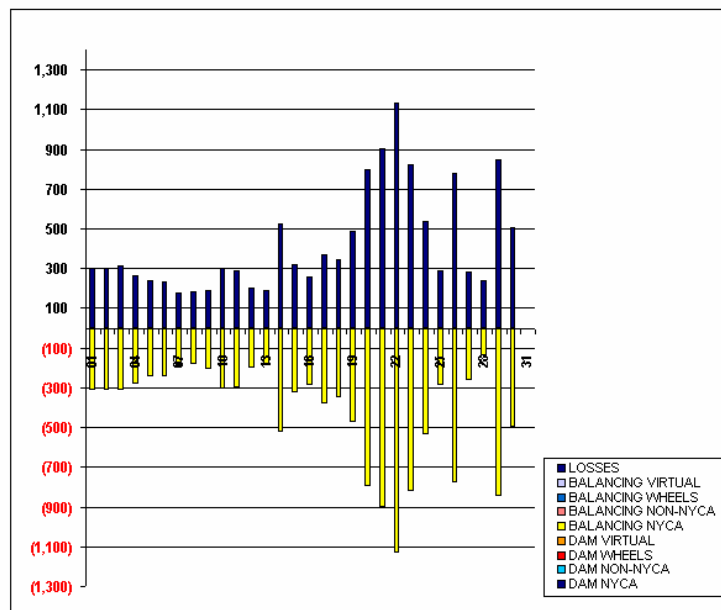
FOR DISCUSSION PURPOSES ONLY



SETTLEMENTS REPORT  
APRIL 2003 CLOSEOUT SETTLEMENT  
MARCH 6, 2006

CLOSEOUT SETTLEMENT MARKET WITHDRAWALS DELTA ANALYSIS

	MONDAY	TUESDAY	WEDNESDAY	THURSDAY	FRIDAY	SATURDAY	SUNDAY
		1	2	3	4	5	6
DAM NYCA		0	0	0	0	0	0
DAM NON-NYCA		0	0	0	0	0	0
DAM WHEELS		0	0	0	0	0	0
DAM VIRTUAL		0	0	0	0	0	0
BALANCING NYCA		(313)	(311)	(315)	(285)	(247)	(244)
BALANCING NON-NYCA		0	0	0	0	0	0
BALANCING WHEELS		0	0	0	0	0	0
BALANCING VIRTUAL		0	0	0	0	0	0
UFE/LOSSES		301	299	316	264	240	233
	7	8	9	10	11	12	13
DAM NYCA	0	0	0	0	0	0	0
DAM NON-NYCA	0	0	0	0	0	0	0
DAM WHEELS	0	0	0	0	0	0	0
DAM VIRTUAL	0	0	0	0	0	0	0
BALANCING NYCA	(189)	(184)	(208)	(308)	(300)	(199)	(187)
BALANCING NON-NYCA	0	0	0	0	0	0	0
BALANCING WHEELS	0	0	0	0	0	0	0
BALANCING VIRTUAL	0	0	0	0	0	0	0
UFE/LOSSES	174	182	189	300	288	199	187
	14	15	16	17	18	19	20
DAM NYCA	0	0	0	0	0	0	0
DAM NON-NYCA	0	0	0	0	0	0	0
DAM WHEELS	0	0	0	0	0	0	0
DAM VIRTUAL	0	0	0	0	0	0	0
BALANCING NYCA	(527)	(323)	(290)	(379)	(353)	(474)	(800)
BALANCING NON-NYCA	0	0	0	0	0	0	0
BALANCING WHEELS	0	0	0	0	0	0	0
BALANCING VIRTUAL	0	0	0	0	0	0	0
UFE/LOSSES	524	319	259	367	345	468	799
	21	22	23	24	25	26	27
DAM NYCA	0	0	0	0	0	0	0
DAM NON-NYCA	0	0	0	0	0	0	0
DAM WHEELS	0	0	0	0	0	0	0
DAM VIRTUAL	0	0	0	0	0	0	0
BALANCING NYCA	(902)	(1,132)	(823)	(536)	(289)	(778)	(263)
BALANCING NON-NYCA	0	0	0	0	0	0	0
BALANCING WHEELS	0	0	0	0	0	0	0
BALANCING VIRTUAL	0	0	0	0	0	0	0
UFE/LOSSES	903	1,133	823	538	291	778	262
	28	29	30				
DAM NYCA	0	0	0				
DAM NON-NYCA	0	0	0				
DAM WHEELS	0	0	0				
DAM VIRTUAL	0	0	0				
BALANCING NYCA	(138)	(846)	(501)				
BALANCING NON-NYCA	0	0	0				
BALANCING WHEELS	0	0	0				
BALANCING VIRTUAL	0	0	0				
UFE/LOSSES	236	847	506				



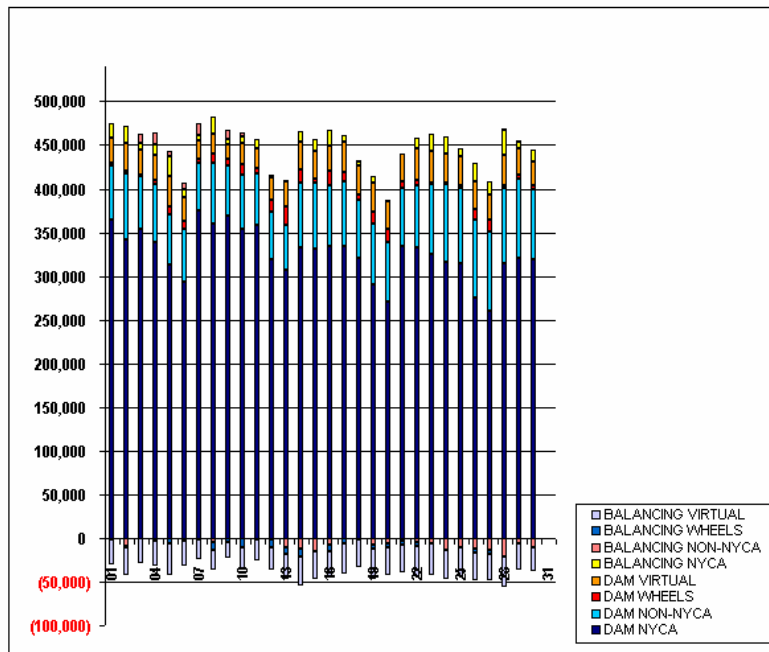
# SETTLEMENTS REPORT

## APRIL 2003 CLOSEOUT SETTLEMENT

### MARCH 6, 2006

#### 4-MONTH SETTLEMENT ADJUSTMENT MARKET SUPPLY ANALYSIS

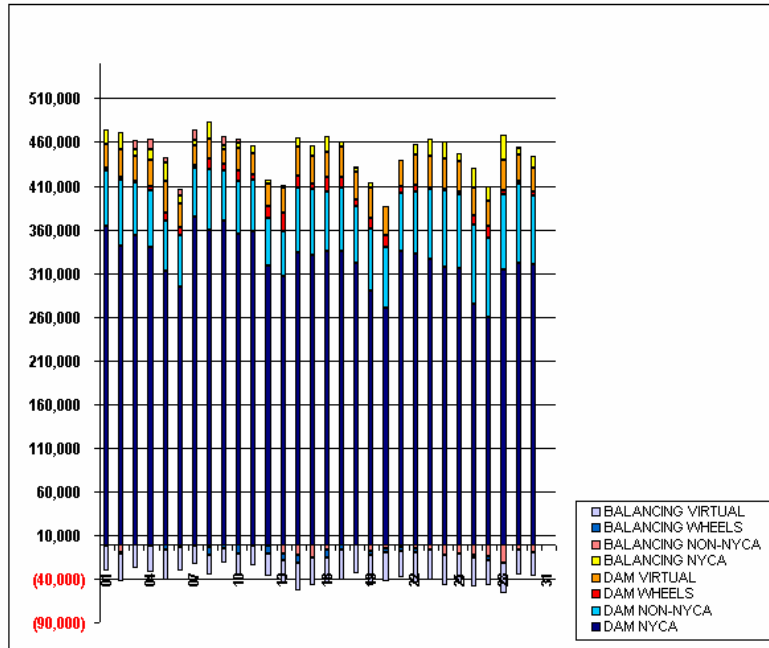
	MONDAY	TUESDAY	WEDNESDAY	THURSDAY	FRIDAY	SATURDAY	SUNDAY
		1	2	3	4	5	6
DAM NYCA		364,196	341,344	353,831	339,185	312,568	293,973
DAM NON-NYCA		63,028	75,975	60,076	65,837	57,576	59,529
DAM WHEELS		2,800	3,295	1,775	4,161	9,203	9,043
DAM VIRTUAL		28,212	31,598	28,264	29,755	35,673	27,825
BALANCING NYCA		16,049	19,251	7,961	12,168	22,207	8,997
BALANCING NON-NYCA		(1,134)	(9,183)	10,881	13,126	6,093	7,424
BALANCING WHEELS		(1,200)	(1,695)	(175)	(2,561)	(6,603)	(3,366)
BALANCING VIRTUAL		(28,212)	(31,598)	(28,264)	(29,755)	(35,673)	(27,825)
	7	8	9	10	11	12	13
DAM NYCA	375,212	359,913	369,587	354,213	358,055	318,735	306,646
DAM NON-NYCA	54,923	69,676	57,357	61,515	59,492	54,695	51,611
DAM WHEELS	3,856	11,200	7,342	12,246	6,000	13,001	21,400
DAM VIRTUAL	21,957	22,561	16,832	24,952	23,302	25,745	28,402
BALANCING NYCA	5,616	19,542	5,387	6,889	9,946	4,047	2,469
BALANCING NON-NYCA	13,337	(4,014)	10,501	4,041	(2,335)	(1,785)	(10,726)
BALANCING WHEELS	(1,789)	(9,334)	(5,342)	(10,887)	0	(9,518)	(7,700)
BALANCING VIRTUAL	(21,957)	(22,561)	(16,832)	(24,952)	(23,302)	(25,745)	(28,402)
	14	15	16	17	18	19	20
DAM NYCA	333,349	331,009	334,688	334,921	320,980	290,365	270,817
DAM NON-NYCA	73,698	75,394	68,809	72,745	66,208	70,071	68,617
DAM WHEELS	14,377	5,591	16,231	11,893	6,496	12,387	13,983
DAM VIRTUAL	32,533	31,813	29,333	34,593	32,610	34,695	32,558
BALANCING NYCA	11,579	12,806	18,077	6,894	4,300	6,467	739
BALANCING NON-NYCA	(12,084)	(15,967)	(7,510)	430	1,604	(8,208)	(5,759)
BALANCING WHEELS	(9,600)	0	(7,850)	(6,533)	(1,006)	(4,440)	(4,698)
BALANCING VIRTUAL	(32,533)	(31,813)	(29,333)	(34,593)	(32,610)	(34,695)	(32,558)
	21	22	23	24	25	26	27
DAM NYCA	334,713	332,127	325,340	316,559	315,258	275,067	260,190
DAM NON-NYCA	66,375	71,867	80,530	88,360	84,814	90,063	90,305
DAM WHEELS	7,787	6,632	1,600	1,600	3,600	10,800	13,392
DAM VIRTUAL	31,258	35,290	35,927	33,886	33,641	32,569	29,234
BALANCING NYCA	(92)	12,125	19,969	19,736	9,147	21,246	15,725
BALANCING NON-NYCA	(3,544)	(4,767)	(6,114)	(13,396)	(10,707)	(12,489)	(14,365)
BALANCING WHEELS	(4,250)	(4,400)	200	100	0	(4,000)	(4,587)
BALANCING VIRTUAL	(31,258)	(35,290)	(35,927)	(33,886)	(33,641)	(32,569)	(29,234)
	28	29	30				
DAM NYCA	314,277	321,348	319,435				
DAM NON-NYCA	86,217	90,291	79,347				
DAM WHEELS	3,962	4,000	4,383				
DAM VIRTUAL	34,416	29,872	27,550				
BALANCING NYCA	28,979	8,001	13,545				
BALANCING NON-NYCA	(21,595)	(6,166)	(10,013)				
BALANCING WHEELS	1,082	1,600	0				
BALANCING VIRTUAL	(34,416)	(29,872)	(27,550)				



SETTLEMENTS REPORT  
APRIL 2003 CLOSEOUT SETTLEMENT  
MARCH 6, 2006

12-MONTH CLOSEOUT SETTLEMENT MARKET SUPPLY ANALYSIS

	MONDAY	TUESDAY	WEDNESDAY	THURSDAY	FRIDAY	SATURDAY	SUNDAY
		1	2	3	4	5	6
DAM NYCA		364,196	341,344	353,831	339,185	312,568	293,973
DAM NON-NYCA		63,028	75,975	60,076	65,837	57,576	59,529
DAM WHEELS		2,800	3,295	1,775	4,161	9,203	9,043
DAM VIRTUAL		28,212	31,598	28,264	29,755	35,673	27,825
BALANCING NYCA		16,036	19,239	7,961	12,147	22,200	8,985
BALANCING NON-NYCA		(1,134)	(9,183)	10,881	13,126	6,093	7,424
BALANCING WHEELS		(1,200)	(1,695)	(175)	(2,561)	(6,603)	(3,366)
BALANCING VIRTUAL		(28,212)	(31,598)	(28,264)	(29,755)	(35,673)	(27,825)
	7	8	9	10	11	12	13
DAM NYCA	375,212	359,913	369,587	354,213	358,055	318,735	306,646
DAM NON-NYCA	54,923	69,676	57,357	61,515	59,492	54,695	51,611
DAM WHEELS	3,856	11,200	7,342	12,246	6,000	13,001	21,400
DAM VIRTUAL	21,957	22,561	16,832	24,952	23,302	25,745	28,402
BALANCING NYCA	5,602	19,540	5,369	6,861	9,935	4,047	2,469
BALANCING NON-NYCA	13,337	(4,014)	10,501	4,041	(2,335)	(1,785)	(10,726)
BALANCING WHEELS	(1,789)	(9,334)	(5,342)	(10,887)	0	(9,518)	(7,700)
BALANCING VIRTUAL	(21,957)	(22,561)	(16,832)	(24,952)	(23,302)	(25,745)	(28,402)
	14	15	16	17	18	19	20
DAM NYCA	333,349	331,009	334,688	334,921	320,980	290,365	270,817
DAM NON-NYCA	73,698	75,394	68,809	72,745	66,208	70,071	68,617
DAM WHEELS	14,377	5,591	16,231	11,893	6,496	12,367	13,983
DAM VIRTUAL	32,533	31,813	29,333	34,593	32,610	34,695	32,558
BALANCING NYCA	11,576	12,801	18,046	6,882	4,292	6,481	738
BALANCING NON-NYCA	(12,084)	(15,967)	(7,510)	430	1,604	(8,208)	(5,759)
BALANCING WHEELS	(9,600)	0	(7,850)	(6,533)	(1,006)	(4,440)	(4,698)
BALANCING VIRTUAL	(32,533)	(31,813)	(29,333)	(34,593)	(32,610)	(34,695)	(32,558)
	21	22	23	24	25	26	27
DAM NYCA	334,713	332,127	325,340	316,559	315,258	275,067	260,190
DAM NON-NYCA	66,375	71,867	80,530	88,360	84,814	90,063	90,305
DAM WHEELS	7,787	6,632	1,600	1,600	3,600	10,800	13,392
DAM VIRTUAL	31,258	35,290	35,927	33,886	33,641	32,569	29,234
BALANCING NYCA	(91)	12,126	19,969	19,738	9,149	21,246	15,744
BALANCING NON-NYCA	(3,544)	(4,767)	(6,114)	(13,396)	(10,707)	(12,489)	(14,365)
BALANCING WHEELS	(4,250)	(4,400)	200	100	0	(4,000)	(4,587)
BALANCING VIRTUAL	(31,258)	(35,290)	(35,927)	(33,886)	(33,641)	(32,569)	(29,234)
	28	29	30				
DAM NYCA	314,277	321,348	319,435				
DAM NON-NYCA	86,217	90,291	79,347				
DAM WHEELS	3,962	4,000	4,383				
DAM VIRTUAL	34,416	29,872	27,550				
BALANCING NYCA	29,077	8,002	13,550				
BALANCING NON-NYCA	(21,595)	(6,166)	(10,013)				
BALANCING WHEELS	1,082	1,600	0				
BALANCING VIRTUAL	(34,416)	(29,872)	(27,550)				



SETTLEMENTS REPORT  
APRIL 2003 CLOSEOUT SETTLEMENT  
MARCH 6, 2006

CLOSEOUT SETTLEMENT MARKET SUPPLY DELTA ANALYSIS

	MONDAY	TUESDAY	WEDNESDAY	THURSDAY	FRIDAY	SATURDAY	SUNDAY
		1	2	3	4	5	6
DAM NYCA		0	0	0	0	0	0
DAM NON-NYCA		0	0	0	0	0	0
DAM WHEELS		0	0	0	0	0	0
DAM VIRTUAL		0	0	0	0	0	0
BALANCING NYCA		(13)	(11)	1	(22)	(7)	(12)
BALANCING NON-NYCA		0	0	0	0	0	0
BALANCING WHEELS		0	0	0	0	0	0
BALANCING VIRTUAL		0	0	0	0	0	0
	7	8	9	10	11	12	13
DAM NYCA	0	0	0	0	0	0	0
DAM NON-NYCA	0	0	0	0	0	0	0
DAM WHEELS	0	0	0	0	0	0	0
DAM VIRTUAL	0	0	0	0	0	0	0
BALANCING NYCA	(15)	(2)	(18)	(8)	(11)	0	0
BALANCING NON-NYCA	0	0	0	0	0	0	0
BALANCING WHEELS	0	0	0	0	0	0	0
BALANCING VIRTUAL	0	0	0	0	0	0	0
	14	15	16	17	18	19	20
DAM NYCA	0	0	0	0	0	0	0
DAM NON-NYCA	0	0	0	0	0	0	0
DAM WHEELS	0	0	0	0	0	0	0
DAM VIRTUAL	0	0	0	0	0	0	0
BALANCING NYCA	(3)	(5)	(32)	(12)	(8)	14	(1)
BALANCING NON-NYCA	0	0	0	0	0	0	0
BALANCING WHEELS	0	0	0	0	0	0	0
BALANCING VIRTUAL	0	0	0	0	0	0	0
	21	22	23	24	25	26	27
DAM NYCA	0	0	0	0	0	0	0
DAM NON-NYCA	0	0	0	0	0	0	0
DAM WHEELS	0	0	0	0	0	0	0
DAM VIRTUAL	0	0	0	0	0	0	0
BALANCING NYCA	1	2	(0)	2	2	0	19
BALANCING NON-NYCA	0	0	0	0	0	0	0
BALANCING WHEELS	0	0	0	0	0	0	0
BALANCING VIRTUAL	0	0	0	0	0	0	0
	28	29	30				
DAM NYCA	0	0	0				
DAM NON-NYCA	0	0	0				
DAM WHEELS	0	0	0				
DAM VIRTUAL	0	0	0				
BALANCING NYCA	99	1	5				
BALANCING NON-NYCA	0	0	0				
BALANCING WHEELS	0	0	0				
BALANCING VIRTUAL	0	0	0				

