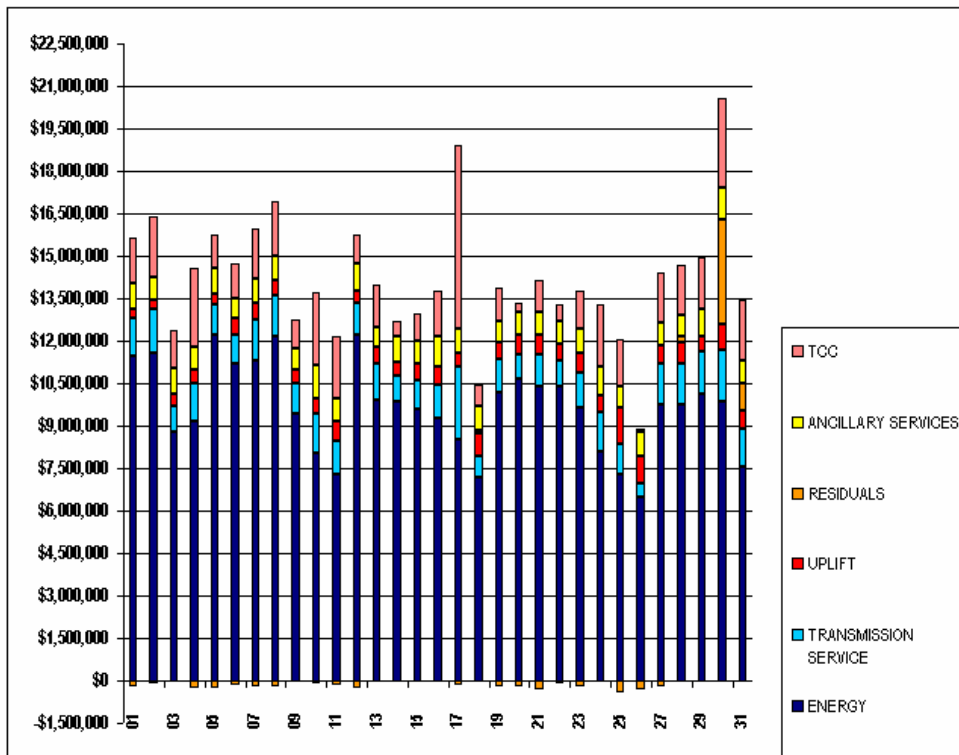


SETTLEMENTS REPORT  
MAY 2003 CLOSEOUT SETTLEMENT  
MARCH 6, 2006

4-MONTH SETTLEMENT ADJUSTMENT MARKET COSTS ANALYSIS

	MONDAY	TUESDAY	WEDNESDAY	THURSDAY	FRIDAY	SATURDAY	SUNDAY
				1	2	3	4
ENERGY				\$11,453,432.11	\$11,565,748.98	\$8,763,355.18	\$9,163,529.61
TRANSMISSION SERVICE				\$1,342,526.25	\$1,547,643.34	\$949,770.42	\$1,323,254.74
UPLIFT				\$350,564.05	\$314,779.41	\$414,734.34	\$480,978.11
RESIDUALS				(\$214,868.73)	(\$112,476.60)	\$15,010.46	(\$243,626.91)
ANCILLARY SERVICES				\$876,448.19	\$843,740.45	\$918,529.41	\$805,425.32
TCC				\$1,596,200.35	\$2,114,948.49	\$1,287,474.51	\$2,784,182.21
	5	6	7	8	9	10	11
ENERGY	\$12,209,967.18	\$11,187,243.24	\$11,308,516.24	\$12,159,002.40	\$9,432,488.57	\$8,041,451.29	\$7,302,093.59
TRANSMISSION SERVICE	\$1,088,156.47	\$1,034,629.20	\$1,438,535.57	\$1,464,254.96	\$1,063,242.15	\$1,374,589.26	\$1,176,414.53
UPLIFT	\$363,273.59	\$558,355.09	\$610,187.08	\$496,415.38	\$485,798.65	\$567,471.90	\$688,091.14
RESIDUALS	(\$252,733.89)	(\$175,333.20)	(\$235,215.85)	(\$234,783.72)	(\$75,583.42)	(\$121,268.86)	(\$148,887.09)
ANCILLARY SERVICES	\$893,944.95	\$735,766.52	\$861,724.36	\$875,067.72	\$753,036.21	\$1,133,572.04	\$819,922.02
TCC	\$1,210,449.16	\$1,221,633.21	\$1,735,364.58	\$1,933,151.23	\$1,032,722.11	\$2,609,363.02	\$2,181,045.75
	12	13	14	15	16	17	18
ENERGY	\$12,211,503.37	\$9,914,793.39	\$9,880,745.01	\$9,580,747.44	\$9,278,326.16	\$8,506,145.34	\$7,189,566.99
TRANSMISSION SERVICE	\$1,101,362.41	\$1,267,790.07	\$861,772.72	\$1,019,408.72	\$1,181,406.36	\$2,566,281.06	\$763,096.87
UPLIFT	\$432,953.21	\$601,251.49	\$488,529.18	\$586,885.16	\$651,358.76	\$478,913.88	\$783,564.36
RESIDUALS	(\$275,457.16)	(\$27,852.95)	\$35,394.77	\$1,038.31	(\$51,730.75)	(\$140,074.44)	\$100,799.75
ANCILLARY SERVICES	\$982,646.53	\$710,687.35	\$897,330.12	\$822,277.11	\$1,032,273.50	\$868,919.72	\$838,027.11
TCC	\$1,023,559.46	\$1,467,606.91	\$557,653.94	\$928,133.28	\$1,642,372.76	\$6,477,829.57	\$784,343.16
	19	20	21	22	23	24	25
ENERGY	\$10,194,168.11	\$10,655,387.33	\$10,391,866.98	\$10,378,496.48	\$9,648,054.28	\$8,097,814.01	\$7,260,727.69
TRANSMISSION SERVICE	\$1,141,353.95	\$859,577.57	\$1,101,739.58	\$929,241.49	\$1,235,122.13	\$1,381,880.89	\$1,076,655.48
UPLIFT	\$610,757.78	\$697,803.97	\$740,744.74	\$558,909.18	\$661,644.42	\$572,002.73	\$1,293,729.55
RESIDUALS	(\$191,957.57)	(\$210,012.77)	(\$307,228.11)	(\$88,274.09)	(\$226,872.47)	(\$20,505.11)	(\$444,817.18)
ANCILLARY SERVICES	\$760,526.80	\$796,595.02	\$809,492.05	\$820,231.74	\$895,034.32	\$1,039,722.10	\$751,261.63
TCC	\$1,192,796.71	\$330,862.55	\$1,097,212.99	\$601,982.44	\$1,302,051.73	\$2,216,167.26	\$1,682,073.79
	26	27	28	29	30	31	
ENERGY	\$6,497,635.23	\$9,772,309.45	\$9,730,522.29	\$10,149,487.60	\$9,838,206.44	\$7,541,655.58	
TRANSMISSION SERVICE	\$480,794.23	\$1,413,579.69	\$1,439,732.72	\$1,469,860.02	\$1,851,977.09	\$1,374,271.08	
UPLIFT	\$944,774.11	\$671,157.29	\$775,033.66	\$562,147.44	\$918,871.12	\$615,186.83	
RESIDUALS	(\$298,193.09)	(\$213,971.38)	\$197,367.73	(\$48,963.31)	\$3,896,262.67	\$949,610.05	
ANCILLARY SERVICES	\$866,418.05	\$801,974.08	\$793,863.69	\$917,823.29	\$1,097,899.79	\$805,143.54	
TCC	\$113,349.23	\$1,778,286.13	\$1,729,289.39	\$1,862,802.40	\$3,168,035.26	\$2,167,670.88	

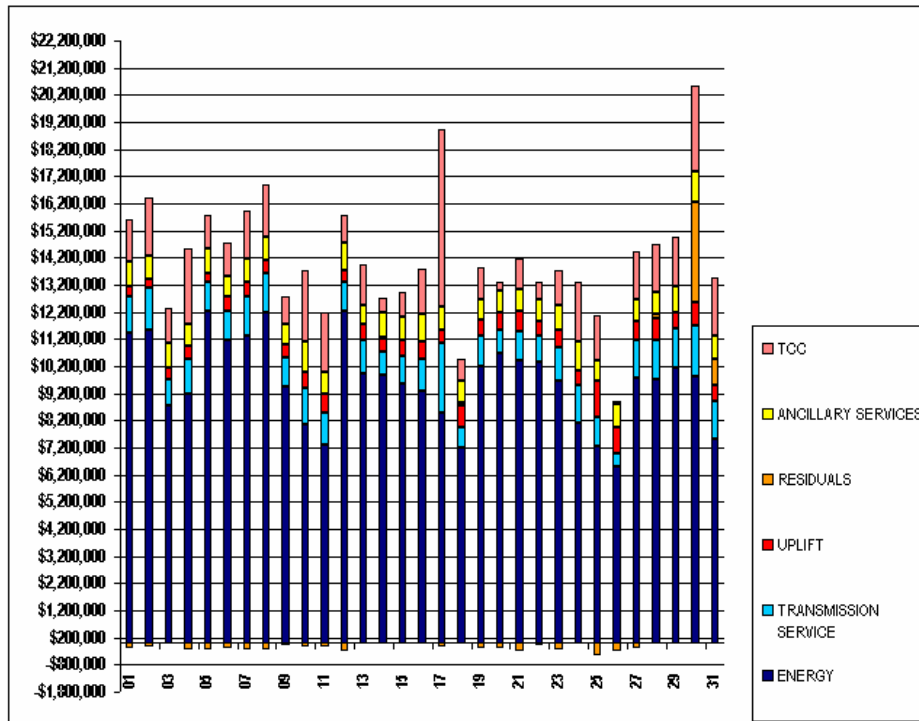


FOR DISCUSSION PURPOSES ONLY

SETTLEMENTS REPORT  
MAY 2003 CLOSEOUT SETTLEMENT  
MARCH 6, 2006

12-MONTH CLOSEOUT SETTLEMENT MARKET COSTS ANALYSIS

	MONDAY	TUESDAY	WEDNESDAY	THURSDAY	FRIDAY	SATURDAY	SUNDAY
				1	2	3	4
ENERGY				\$11,453,431.82	\$11,565,748.40	\$8,763,355.61	\$9,163,529.66
TRANSMISSION SERVICE				\$1,342,485.23	\$1,547,598.98	\$949,724.70	\$1,323,206.61
UPLIFT				\$353,774.83	\$521,514.48	\$420,547.81	\$483,522.91
RESIDUALS				(\$214,889.38)	(\$112,549.17)	\$15,256.08	(\$243,577.11)
ANCILLARY SERVICES				\$884,431.53	\$849,209.54	\$918,386.47	\$798,236.47
TCC				\$1,591,956.12	\$2,114,880.09	\$1,287,476.22	\$2,787,757.25
	5	6	7	8	9	10	11
ENERGY	\$12,209,967.42	\$11,187,242.89	\$11,308,516.52	\$12,159,002.84	\$9,432,483.81	\$8,041,451.87	\$7,302,042.92
TRANSMISSION SERVICE	\$1,088,113.22	\$1,034,580.26	\$1,438,479.09	\$1,464,210.03	\$1,063,202.86	\$1,374,535.51	\$1,176,363.02
UPLIFT	\$353,094.24	\$546,609.56	\$564,098.92	\$488,513.29	\$495,057.95	\$569,272.89	\$683,117.67
RESIDUALS	(\$253,488.49)	(\$175,409.53)	(\$236,272.78)	(\$235,341.94)	(\$75,561.03)	(\$121,387.42)	(\$148,823.00)
ANCILLARY SERVICES	\$894,759.64	\$750,214.58	\$864,286.49	\$875,871.67	\$756,846.60	\$1,121,262.37	\$826,394.24
TCC	\$1,210,449.16	\$1,221,633.21	\$1,735,470.60	\$1,933,138.12	\$1,032,721.54	\$2,609,245.60	\$2,181,045.75
	12	13	14	15	16	17	18
ENERGY	\$12,211,487.67	\$9,914,792.03	\$9,880,754.12	\$9,580,736.30	\$9,278,337.74	\$8,506,146.81	\$7,189,562.15
TRANSMISSION SERVICE	\$1,101,311.52	\$1,267,734.72	\$861,713.83	\$1,019,351.88	\$1,181,350.80	\$2,566,219.72	\$763,033.99
UPLIFT	\$433,155.12	\$574,444.48	\$486,875.07	\$577,978.52	\$646,247.38	\$477,328.99	\$782,241.87
RESIDUALS	(\$276,387.97)	(\$27,866.22)	\$35,895.13	\$3,085.24	(\$51,714.99)	(\$140,063.49)	\$100,796.34
ANCILLARY SERVICES	\$981,244.63	\$714,538.87	\$902,006.53	\$823,350.08	\$1,038,674.84	\$870,368.69	\$842,341.01
TCC	\$1,023,559.46	\$1,467,606.91	\$557,653.94	\$826,133.28	\$1,642,631.54	\$6,488,327.83	\$784,371.09
	19	20	21	22	23	24	25
ENERGY	\$10,194,174.04	\$10,655,402.05	\$10,391,866.93	\$10,378,487.30	\$9,648,054.21	\$8,097,814.03	\$7,260,727.58
TRANSMISSION SERVICE	\$1,141,293.22	\$859,504.93	\$1,101,686.74	\$929,190.04	\$1,235,073.45	\$1,381,826.81	\$1,076,591.32
UPLIFT	\$558,799.21	\$641,907.99	\$737,800.81	\$549,674.91	\$654,561.40	\$585,351.66	\$1,303,536.40
RESIDUALS	(\$192,116.92)	(\$209,684.12)	(\$306,867.69)	(\$88,116.20)	(\$226,774.84)	(\$20,432.44)	(\$444,795.14)
ANCILLARY SERVICES	\$765,192.60	\$805,481.08	\$810,339.20	\$824,894.78	\$897,688.35	\$1,043,645.31	\$757,523.38
TCC	\$1,192,727.17	\$330,857.99	\$1,097,122.36	\$601,956.79	\$1,301,888.70	\$2,219,028.09	\$1,684,189.63
	26	27	28	29	30	31	
ENERGY	\$6,497,635.48	\$9,772,309.81	\$9,730,521.99	\$10,149,486.95	\$9,838,221.40	\$7,541,655.83	
TRANSMISSION SERVICE	\$480,731.55	\$1,413,516.18	\$1,439,877.17	\$1,469,612.77	\$1,851,902.31	\$1,374,220.81	
UPLIFT	\$856,043.02	\$680,516.82	\$771,871.27	\$557,460.80	\$873,934.19	\$605,019.15	
RESIDUALS	(\$296,008.16)	(\$213,635.45)	\$197,420.97	(\$48,782.98)	\$3,636,288.65	\$949,586.78	
ANCILLARY SERVICES	\$869,354.23	\$806,561.94	\$807,014.84	\$944,469.05	\$1,125,130.05	\$845,681.94	
TCC	\$113,348.66	\$1,777,992.58	\$1,728,944.54	\$1,862,376.04	\$3,172,147.81	\$2,168,322.39	

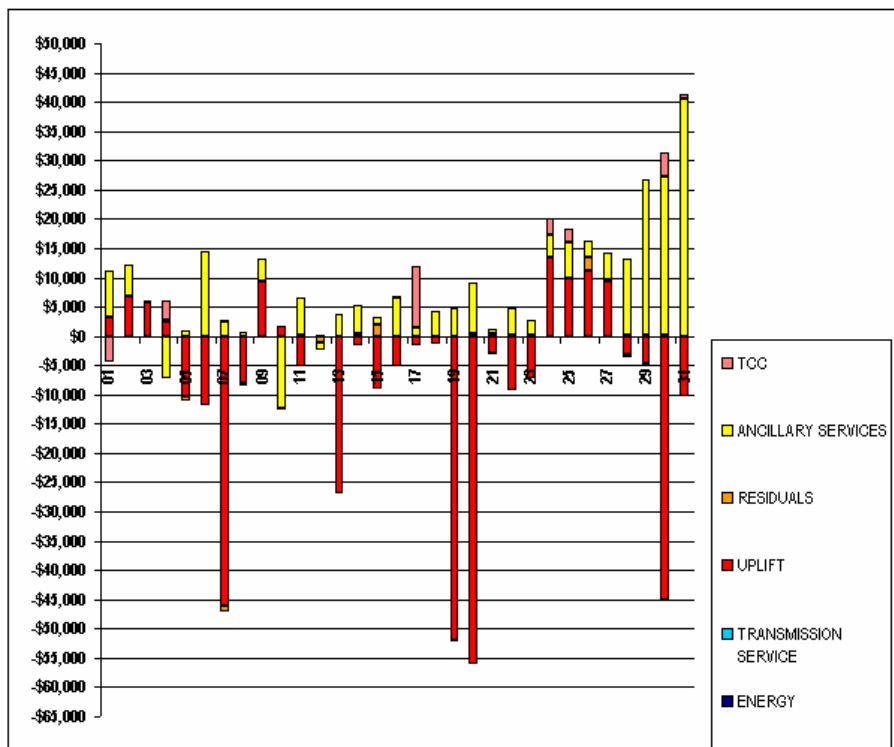


FOR DISCUSSION PURPOSES ONLY

SETTLEMENTS REPORT  
MAY 2003 CLOSEOUT SETTLEMENT  
MARCH 6, 2006

CLOSEOUT SETTLEMENT MARKET COSTS DELTA ANALYSIS

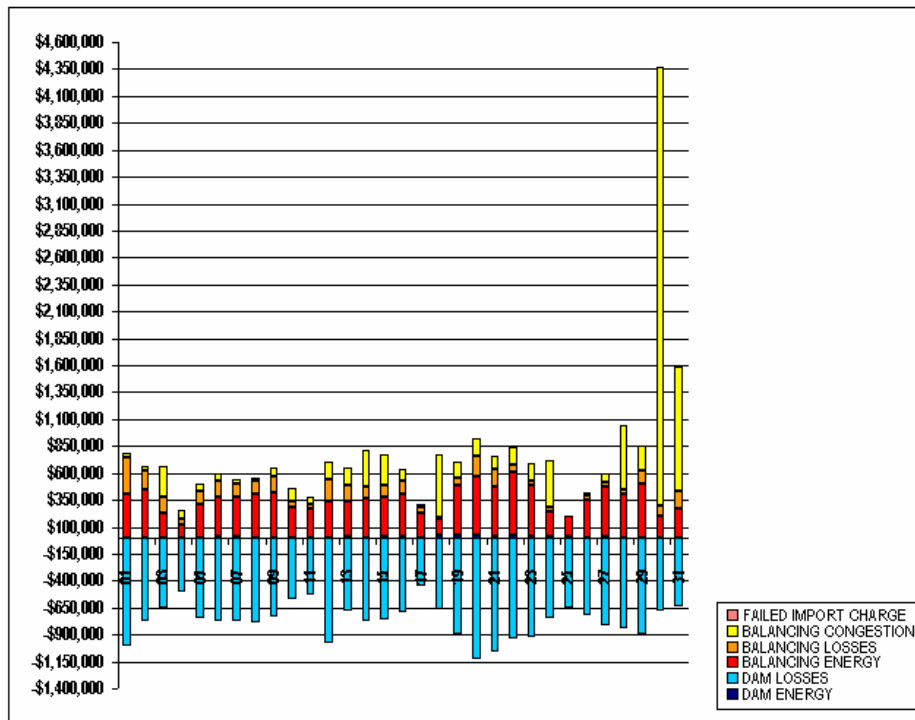
	MONDAY	TUESDAY	WEDNESDAY	THURSDAY	FRIDAY	SATURDAY	SUNDAY
				1	2	3	4
ENERGY				(\$0.29)	(\$0.58)	\$0.43	\$0.05
TRANSMISSION SERVICE				(\$41.02)	(\$44.36)	(\$45.72)	(\$48.13)
UPLIFT				\$3,210.78	\$6,735.07	\$5,813.47	\$2,544.80
RESIDUALS				(\$20.65)	(\$72.57)	\$245.60	\$49.80
ANCILLARY SERVICES				\$7,983.34	\$5,469.09	(\$142.94)	(\$7,188.85)
TCC				(\$4,244.23)	(\$68.40)	\$1.71	\$3,575.04
	5	6	7	8	9	10	11
ENERGY	\$0.24	(\$0.35)	\$0.28	\$0.44	(\$4.76)	\$0.58	(\$50.67)
TRANSMISSION SERVICE	(\$43.25)	(\$48.94)	(\$56.48)	(\$44.93)	(\$39.29)	(\$53.75)	(\$51.57)
UPLIFT	(\$10,179.35)	(\$11,745.53)	(\$46,088.16)	(\$7,902.09)	\$9,259.30	\$1,800.99	(\$4,973.47)
RESIDUALS	(\$754.60)	(\$76.33)	(\$1,056.93)	(\$558.22)	\$22.39	(\$118.56)	\$64.09
ANCILLARY SERVICES	\$814.69	\$14,448.06	\$2,562.13	\$803.95	\$3,812.39	(\$12,309.67)	\$6,472.22
TCC	\$0.00	\$0.00	\$106.02	(\$13.11)	(\$0.57)	(\$117.42)	\$0.00
	12	13	14	15	16	17	18
ENERGY	(\$15.70)	(\$1.36)	\$9.11	(\$11.14)	\$11.58	\$1.47	(\$4.84)
TRANSMISSION SERVICE	(\$50.89)	(\$55.35)	(\$58.89)	(\$56.84)	(\$55.56)	(\$61.34)	(\$62.88)
UPLIFT	\$201.91	(\$26,807.01)	(\$1,654.11)	(\$8,906.64)	(\$5,111.38)	(\$1,584.89)	(\$1,322.49)
RESIDUALS	(\$930.81)	(\$13.27)	\$500.36	\$2,046.93	\$15.76	\$10.95	(\$3.41)
ANCILLARY SERVICES	(\$1,401.90)	\$3,851.52	\$4,676.41	\$1,072.97	\$6,401.34	\$1,448.97	\$4,313.90
TCC	\$0.00	\$0.00	\$0.00	\$0.00	\$258.78	\$10,498.26	\$27.93
	19	20	21	22	23	24	25
ENERGY	\$5.93	\$14.72	(\$0.05)	(\$9.18)	(\$0.07)	\$0.02	(\$0.11)
TRANSMISSION SERVICE	(\$60.73)	(\$72.64)	(\$52.84)	(\$51.45)	(\$48.68)	(\$54.08)	(\$64.16)
UPLIFT	(\$51,958.57)	(\$55,895.98)	(\$2,943.93)	(\$9,234.27)	(\$7,083.02)	\$13,348.93	\$9,806.85
RESIDUALS	(\$159.35)	\$328.65	\$360.42	\$157.89	\$97.63	\$72.67	\$22.04
ANCILLARY SERVICES	\$4,665.80	\$8,886.06	\$847.15	\$4,663.04	\$2,654.03	\$3,923.21	\$6,261.75
TCC	(\$69.54)	(\$4.56)	(\$90.63)	(\$25.65)	(\$163.03)	\$2,860.83	\$2,115.84
	26	27	28	29	30	31	
ENERGY	\$0.25	\$0.36	(\$0.30)	(\$0.65)	\$14.96	\$0.25	
TRANSMISSION SERVICE	(\$62.68)	(\$63.51)	(\$55.55)	(\$47.25)	(\$74.78)	(\$50.27)	
UPLIFT	\$11,268.91	\$9,359.53	(\$3,162.39)	(\$4,686.64)	(\$44,936.93)	(\$10,167.68)	
RESIDUALS	\$2,184.93	\$335.93	\$53.24	\$180.33	\$25.98	(\$23.27)	
ANCILLARY SERVICES	\$2,936.18	\$4,587.86	\$13,151.15	\$26,645.76	\$27,230.26	\$40,538.40	
TCC	(\$0.57)	(\$293.55)	(\$344.85)	(\$426.36)	\$4,112.55	\$651.51	



SETTLEMENTS REPORT  
MAY 2003 CLOSEOUT SETTLEMENT  
MARCH 6, 2006

4-MONTH SETTLEMENT ADJUSTMENT MARKET RESIDUALS ANALYSIS

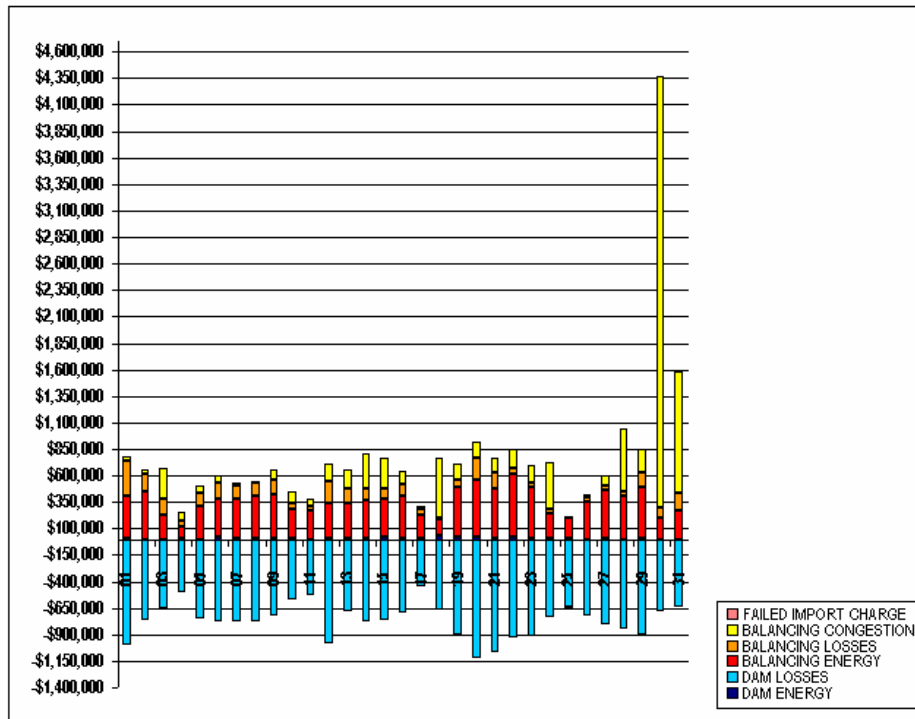
	MONDAY	TUESDAY	WEDNESDAY	THURSDAY	FRIDAY	SATURDAY	SUNDAY
				1	2	3	4
DAM ENERGY				\$1,710.12	\$248.24	(\$278.57)	\$1,706.73
DAM LOSSES				(\$1,000,252.38)	(\$769,696.07)	(\$650,041.98)	(\$504,534.40)
BALANCING ENERGY				\$410,454.47	\$448,864.92	\$224,954.14	\$112,177.69
BALANCING LOSSES				\$328,817.67	\$168,759.44	\$148,609.56	\$65,004.69
BALANCING CONGESTION				\$44,401.39	\$39,346.87	\$291,767.33	\$82,018.38
FAILED IMPORT CHARGE				\$0.00	\$0.00	\$0.00	\$0.00
	5	6	7	8	9	10	11
DAM ENERGY	(\$641.14)	\$16,731.57	\$9,193.29	\$1,193.65	\$2,529.46	\$1,951.11	\$548.69
DAM LOSSES	(\$754,277.15)	(\$774,686.15)	(\$774,886.51)	(\$784,866.53)	(\$729,653.50)	(\$575,787.28)	(\$530,135.25)
BALANCING ENERGY	\$311,081.39	\$367,953.08	\$375,526.15	\$403,652.57	\$420,127.71	\$280,238.86	\$271,233.17
BALANCING LOSSES	\$118,262.68	\$142,353.59	\$118,035.85	\$124,684.78	\$143,005.37	\$51,821.43	\$37,861.71
BALANCING CONGESTION	\$72,840.33	\$72,314.71	\$36,915.37	\$20,551.81	\$88,407.54	\$120,507.02	\$71,604.59
FAILED IMPORT CHARGE	\$0.00	\$0.00	\$0.00	\$0.00	\$0.00	\$0.00	\$0.00
	12	13	14	15	16	17	18
DAM ENERGY	\$3,908.56	\$11,193.80	\$1,361.82	\$14,889.61	\$6,261.76	\$1,228.45	\$31,545.61
DAM LOSSES	(\$983,607.18)	(\$681,419.93)	(\$777,657.99)	(\$768,013.46)	(\$689,230.50)	(\$446,551.50)	(\$667,453.41)
BALANCING ENERGY	\$335,442.51	\$328,699.18	\$366,731.80	\$357,513.81	\$395,859.61	\$229,793.47	\$149,064.98
BALANCING LOSSES	\$204,779.80	\$140,645.06	\$105,655.46	\$108,656.71	\$121,639.80	\$46,324.64	\$13,895.34
BALANCING CONGESTION	\$164,019.15	\$173,028.94	\$339,303.68	\$287,991.64	\$113,738.58	\$29,130.50	\$573,747.23
FAILED IMPORT CHARGE	\$0.00	\$0.00	\$0.00	\$0.00	\$0.00	\$0.00	\$0.00
	19	20	21	22	23	24	25
DAM ENERGY	\$25,153.38	\$24,512.80	\$6,325.08	\$22,438.52	\$5,080.27	\$7,834.94	\$13,912.65
DAM LOSSES	(\$898,411.95)	(\$1,130,572.59)	(\$1,066,775.95)	(\$834,410.42)	(\$821,017.70)	(\$743,416.41)	(\$647,089.31)
BALANCING ENERGY	\$462,721.75	\$539,006.57	\$464,723.62	\$588,008.22	\$488,443.42	\$231,499.29	\$181,666.63
BALANCING LOSSES	\$64,894.29	\$197,468.91	\$161,157.83	\$61,477.64	\$39,697.84	\$47,285.63	\$12,905.07
BALANCING CONGESTION	\$153,684.96	\$159,571.54	\$127,341.31	\$174,211.95	\$160,923.70	\$436,291.44	(\$6,212.22)
FAILED IMPORT CHARGE	\$0.00	\$0.00	\$0.00	\$0.00	\$0.00	\$0.00	\$0.00
	26	27	28	29	30	31	
DAM ENERGY	\$377.86	\$8,689.06	\$325.59	\$1,051.52	\$757.96	\$477.93	
DAM LOSSES	(\$722,395.11)	(\$811,360.87)	(\$846,309.21)	(\$899,414.64)	(\$675,744.12)	(\$636,699.20)	
BALANCING ENERGY	\$354,695.20	\$459,068.62	\$408,104.36	\$496,356.61	\$205,779.23	\$267,379.61	
BALANCING LOSSES	\$41,879.48	\$42,941.80	\$37,916.84	\$124,440.24	\$88,882.11	\$171,401.78	
BALANCING CONGESTION	\$27,249.48	\$86,690.01	\$597,330.15	\$228,602.96	\$4,076,587.49	\$1,147,049.93	
FAILED IMPORT CHARGE	\$0.00	\$0.00	\$0.00	\$0.00	\$0.00	\$0.00	



SETTLEMENTS REPORT  
MAY 2003 CLOSEOUT SETTLEMENT  
MARCH 6, 2006

12-MONTH CLOSEOUT SETTLEMENT MARKET RESIDUALS ANALYSIS

	MONDAY	TUESDAY	WEDNESDAY	THURSDAY	FRIDAY	SATURDAY	SUNDAY
				1	2	3	4
DAM ENERGY				\$1,710.19	\$248.20	(\$278.57)	\$1,706.74
DAM LOSSES				(\$1,000,285.24)	(\$769,917.14)	(\$650,044.30)	(\$504,536.28)
BALANCING ENERGY				\$410,659.10	\$448,886.37	\$225,081.76	\$112,248.32
BALANCING LOSSES				\$328,623.74	\$168,885.00	\$148,614.35	\$64,983.67
BALANCING CONGESTION				\$44,402.83	\$39,348.40	\$291,882.84	\$82,020.44
FAILED IMPORT CHARGE				\$0.00	\$0.00	\$0.00	\$0.00
	5	6	7	8	9	10	11
DAM ENERGY	(\$641.10)	\$16,731.56	\$9,193.77	\$1,193.64	\$2,529.49	\$1,951.12	\$548.71
DAM LOSSES	(\$754,487.51)	(\$774,686.03)	(\$775,242.02)	(\$785,324.65)	(\$729,687.37)	(\$675,797.76)	(\$530,154.25)
BALANCING ENERGY	\$310,899.88	\$367,943.39	\$375,468.00	\$403,611.76	\$420,053.37	\$280,153.89	\$271,333.59
BALANCING LOSSES	\$118,162.36	\$142,305.05	\$117,998.64	\$124,659.47	\$143,445.60	\$51,847.85	\$37,822.00
BALANCING CONGESTION	\$72,577.88	\$72,296.50	\$36,308.83	\$20,517.84	\$88,097.88	\$120,457.48	\$71,626.95
FAILED IMPORT CHARGE	\$0.00	\$0.00	\$0.00	\$0.00	\$0.00	\$0.00	\$0.00
	12	13	14	15	16	17	18
DAM ENERGY	\$3,908.80	\$11,194.18	\$1,361.85	\$14,890.41	\$6,262.11	\$1,228.51	\$31,547.13
DAM LOSSES	(\$983,834.54)	(\$681,474.02)	(\$777,693.51)	(\$768,047.68)	(\$689,350.97)	(\$446,574.68)	(\$667,487.10)
BALANCING ENERGY	\$334,879.33	\$328,509.49	\$366,897.76	\$358,555.91	\$395,726.25	\$229,809.36	\$149,069.76
BALANCING LOSSES	\$204,821.96	\$140,835.61	\$105,996.90	\$109,071.31	\$121,895.47	\$46,327.96	\$13,895.53
BALANCING CONGESTION	\$163,836.48	\$173,068.52	\$339,332.13	\$288,615.29	\$113,752.15	\$29,145.36	\$573,771.02
FAILED IMPORT CHARGE	\$0.00	\$0.00	\$0.00	\$0.00	\$0.00	\$0.00	\$0.00
	19	20	21	22	23	24	25
DAM ENERGY	\$25,154.38	\$24,513.73	\$6,325.32	\$22,438.92	\$5,080.41	\$7,834.94	\$13,912.65
DAM LOSSES	(\$898,629.41)	(\$1,130,616.50)	(\$1,066,822.81)	(\$934,442.86)	(\$821,057.48)	(\$743,416.41)	(\$647,089.31)
BALANCING ENERGY	\$462,710.30	\$538,918.43	\$464,798.40	\$588,094.02	\$488,516.33	\$231,522.92	\$181,687.09
BALANCING LOSSES	\$64,976.87	\$197,943.64	\$161,488.33	\$61,577.22	\$39,760.29	\$47,287.66	\$12,906.64
BALANCING CONGESTION	\$153,670.94	\$159,556.58	\$127,343.07	\$174,216.50	\$160,925.61	\$436,338.45	(\$6,212.21)
FAILED IMPORT CHARGE	\$0.00	\$0.00	\$0.00	\$0.00	\$0.00	\$0.00	\$0.00
	26	27	28	29	30	31	
DAM ENERGY	\$377.88	\$8,689.06	\$325.59	\$1,051.59	\$757.99	\$477.93	
DAM LOSSES	(\$722,429.55)	(\$811,389.23)	(\$846,325.13)	(\$899,424.35)	(\$675,772.71)	(\$636,699.20)	
BALANCING ENERGY	\$356,780.11	\$459,399.98	\$408,202.30	\$496,468.11	\$205,761.18	\$267,383.63	
BALANCING LOSSES	\$42,010.53	\$42,970.30	\$37,923.19	\$124,453.11	\$88,810.61	\$171,373.52	
BALANCING CONGESTION	\$27,252.87	\$86,694.44	\$597,295.02	\$228,668.56	\$4,076,731.58	\$1,147,050.90	
FAILED IMPORT CHARGE	\$0.00	\$0.00	\$0.00	\$0.00	\$0.00	\$0.00	

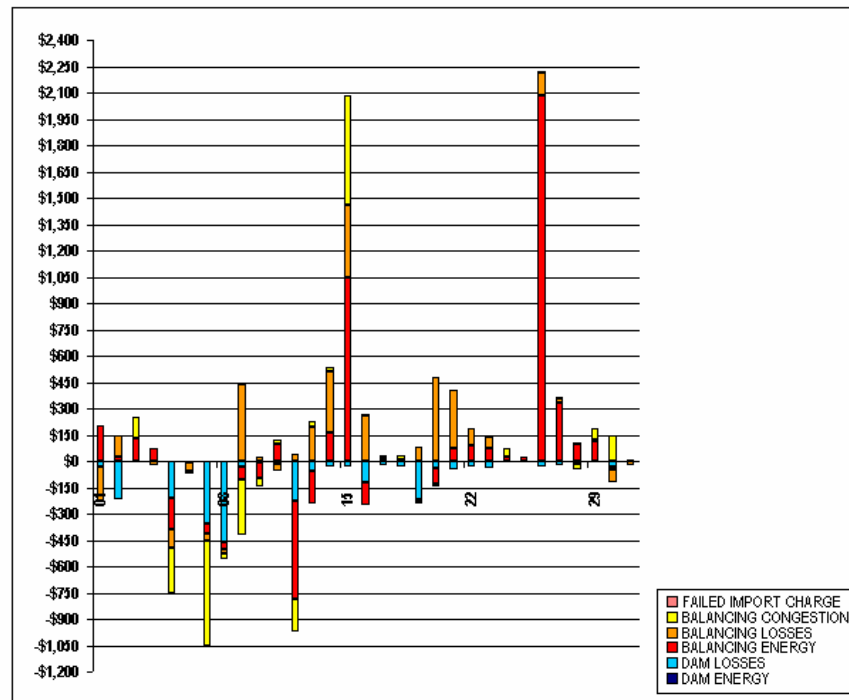


FOR DISCUSSION PURPOSES ONLY

SETTLEMENTS REPORT  
MAY 2003 CLOSEOUT SETTLEMENT  
MARCH 6, 2006

CLOSEOUT SETTLEMENT MARKET RESIDUALS DELTA ANALYSIS

	MONDAY	TUESDAY	WEDNESDAY	THURSDAY	FRIDAY	SATURDAY	SUNDAY
				1	2	3	4
DAM ENERGY				\$0.07	(\$0.04)	\$0.00	\$0.01
DAM LOSSES				(\$32.86)	(\$221.07)	(\$2.32)	(\$1.88)
BALANCING ENERGY				\$204.63	\$21.45	\$127.62	\$70.63
BALANCING LOSSES				(\$193.93)	\$125.56	\$4.79	(\$21.02)
BALANCING CONGESTION				\$1.44	\$1.53	\$115.51	\$2.06
FAILED IMPORT CHARGE				\$0.00	\$0.00	\$0.00	\$0.00
	5	6	7	8	9	10	11
DAM ENERGY	\$0.04	(\$0.01)	\$0.48	(\$0.01)	\$0.03	\$0.01	\$0.02
DAM LOSSES	(\$210.36)	\$0.12	(\$355.51)	(\$458.12)	(\$33.87)	(\$10.48)	(\$19.00)
BALANCING ENERGY	(\$181.51)	(\$9.69)	(\$58.15)	(\$40.81)	(\$74.34)	(\$84.97)	\$100.42
BALANCING LOSSES	(\$100.32)	(\$48.54)	(\$37.21)	(\$25.31)	\$440.23	\$26.42	(\$39.71)
BALANCING CONGESTION	(\$262.45)	(\$18.21)	(\$606.54)	(\$33.97)	(\$309.66)	(\$49.54)	\$22.36
FAILED IMPORT CHARGE	\$0.00	\$0.00	\$0.00	\$0.00	\$0.00	\$0.00	\$0.00
	12	13	14	15	16	17	18
DAM ENERGY	\$0.24	\$0.38	\$0.03	\$0.80	\$0.35	\$0.06	\$1.52
DAM LOSSES	(\$227.36)	(\$54.09)	(\$35.52)	(\$34.22)	(\$120.47)	(\$23.18)	(\$33.69)
BALANCING ENERGY	(\$563.18)	(\$189.69)	\$165.96	\$1,042.10	(\$133.36)	\$15.89	\$4.78
BALANCING LOSSES	\$42.16	\$190.55	\$341.44	\$414.60	\$255.67	\$3.32	\$0.19
BALANCING CONGESTION	(\$182.67)	\$39.58	\$28.45	\$623.65	\$13.57	\$14.86	\$23.79
FAILED IMPORT CHARGE	\$0.00	\$0.00	\$0.00	\$0.00	\$0.00	\$0.00	\$0.00
	19	20	21	22	23	24	25
DAM ENERGY	\$1.00	\$0.93	\$0.24	\$0.40	\$0.14	\$0.00	\$0.00
DAM LOSSES	(\$217.46)	(\$43.91)	(\$46.88)	(\$32.44)	(\$39.78)	\$0.00	\$0.00
BALANCING ENERGY	(\$11.45)	(\$88.14)	\$74.78	\$85.80	\$72.91	\$23.63	\$20.46
BALANCING LOSSES	\$82.58	\$474.73	\$330.50	\$89.58	\$62.45	\$2.03	\$1.57
BALANCING CONGESTION	(\$14.02)	(\$14.96)	\$1.76	\$4.55	\$1.91	\$47.01	\$0.01
FAILED IMPORT CHARGE	\$0.00	\$0.00	\$0.00	\$0.00	\$0.00	\$0.00	\$0.00
	26	27	28	29	30	31	
DAM ENERGY	\$0.02	\$0.00	\$0.00	\$0.07	\$0.03	\$0.00	
DAM LOSSES	(\$34.44)	(\$28.36)	(\$15.92)	(\$9.71)	(\$28.59)	\$0.00	
BALANCING ENERGY	\$2,084.91	\$331.36	\$87.94	\$111.50	(\$18.05)	\$4.02	
BALANCING LOSSES	\$131.05	\$28.50	\$6.35	\$12.87	(\$71.50)	(\$28.26)	
BALANCING CONGESTION	\$3.39	\$4.43	(\$35.13)	\$65.60	\$144.09	\$0.97	
FAILED IMPORT CHARGE	\$0.00	\$0.00	\$0.00	\$0.00	\$0.00	\$0.00	



FOR DISCUSSION PURPOSES ONLY

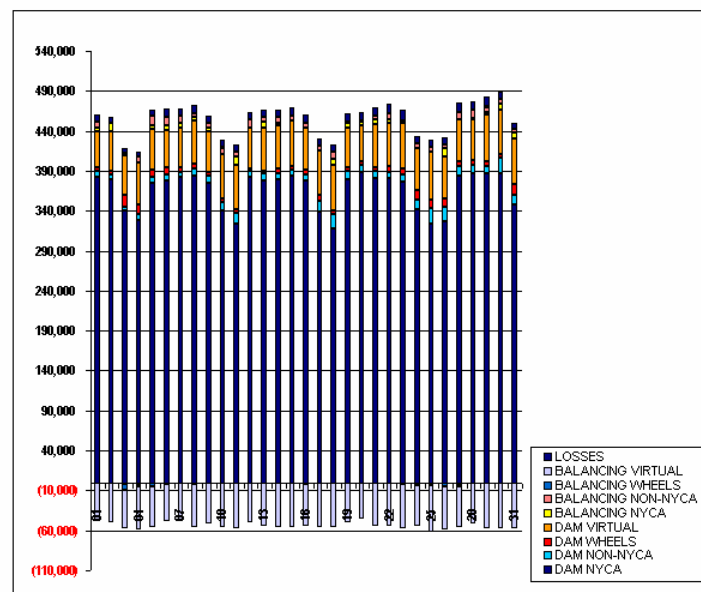
# SETTLEMENTS REPORT

## MAY 2003 CLOSEOUT SETTLEMENT

### MARCH 6, 2006

## 4-MONTH SETTLEMENT ADJUSTMENT MARKET WITHDRAWALS ANALYSIS

	MONDAY	TUESDAY	WEDNESDAY	THURSDAY	FRIDAY	SATURDAY	SUNDAY
				1	2	3	4
DAM NYCA				382,976	378,727	340,546	328,396
DAM NON-NYCA				7,405	5,956	4,757	7,248
DAM WHEELS				3,464	5,200	14,827	11,600
DAM VIRTUAL				45,804	49,279	48,841	53,845
BALANCING NYCA				4,707	10,484	(2,264)	(1,241)
BALANCING NON-NYCA				7,512	250	2,933	6,405
BALANCING WHEELS				(488)	(325)	(6,505)	(4,111)
BALANCING VIRTUAL				(45,804)	(49,279)	(48,841)	(53,845)
UFE/LOSSES				9,067	8,013	6,400	5,743
	5	6	7	8	9	10	11
DAM NYCA	375,604	378,436	382,624	383,921	375,222	340,837	324,100
DAM NON-NYCA	7,164	7,541	6,044	8,479	8,657	9,386	12,920
DAM WHEELS	8,800	8,800	5,870	7,000	3,959	4,600	4,200
DAM VIRTUAL	51,264	46,352	48,960	54,252	51,856	56,067	56,713
BALANCING NYCA	4,187	6,334	6,518	3,508	3,748	251	10,617
BALANCING NON-NYCA	12,410	10,659	9,425	5,481	5,960	7,818	5,216
BALANCING WHEELS	(5,350)	(2,175)	(75)	(1,749)	0	225	0
BALANCING VIRTUAL	(51,264)	(46,352)	(48,960)	(54,252)	(51,856)	(56,067)	(56,714)
UFE/LOSSES	7,674	9,118	8,995	9,438	8,922	9,069	8,709
	12	13	14	15	16	17	18
DAM NYCA	382,036	377,574	379,293	383,485	378,464	338,291	318,157
DAM NON-NYCA	7,299	8,947	8,212	8,364	7,409	14,727	17,563
DAM WHEELS	4,000	4,000	5,265	4,441	5,700	7,200	5,000
DAM VIRTUAL	50,054	53,740	54,136	55,951	53,003	55,874	56,038
BALANCING NYCA	1,101	6,921	3,413	424	(1,445)	(108)	8,003
BALANCING NON-NYCA	10,321	6,089	7,236	5,995	5,507	5,350	9,566
BALANCING WHEELS	150	0	(1,165)	(447)	(725)	0	0
BALANCING VIRTUAL	(50,054)	(53,740)	(54,136)	(55,951)	(53,003)	(55,874)	(56,038)
UFE/LOSSES	6,554	9,213	9,414	10,068	9,995	8,392	8,386
	19	20	21	22	23	24	25
DAM NYCA	379,366	388,319	380,786	381,290	376,678	342,326	323,632
DAM NON-NYCA	10,994	9,411	9,305	7,807	8,739	12,077	20,105
DAM WHEELS	3,700	3,600	4,400	6,800	8,200	12,000	10,600
DAM VIRTUAL	50,061	45,263	54,641	54,619	56,348	51,352	59,064
BALANCING NYCA	5,717	4,324	5,971	3,369	1,287	(487)	556
BALANCING NON-NYCA	1,219	1,999	3,192	7,722	2,159	6,023	6,042
BALANCING WHEELS	195	239	(44)	414	(1,400)	(3,086)	(3,100)
BALANCING VIRTUAL	(50,061)	(45,263)	(54,641)	(54,619)	(56,348)	(51,352)	(59,064)
UFE/LOSSES	10,997	10,807	11,131	12,330	12,545	9,382	9,381
	26	27	28	29	30	31	
DAM NYCA	326,245	383,276	386,834	386,321	386,914	347,158	
DAM NON-NYCA	19,120	12,000	11,105	9,925	19,927	13,055	
DAM WHEELS	10,400	7,171	6,000	5,596	3,394	13,541	
DAM VIRTUAL	52,807	52,008	51,043	58,195	56,389	57,184	
BALANCING NYCA	9,458	(2,035)	297	3,565	7,435	7,556	
BALANCING NON-NYCA	4,342	9,542	11,137	6,577	5,802	3,635	
BALANCING WHEELS	(5,500)	(2,600)	(759)	521	(450)	(991)	
BALANCING VIRTUAL	(52,807)	(52,008)	(51,043)	(58,195)	(56,389)	(57,184)	
UFE/LOSSES	9,030	11,538	10,440	11,808	8,921	7,915	



FOR DISCUSSION PURPOSES ONLY



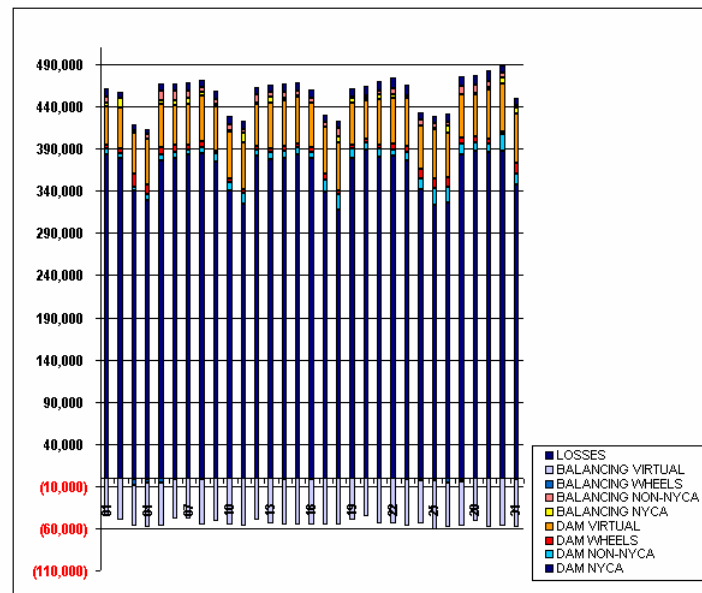
# SETTLEMENTS REPORT

## MAY 2003 CLOSEOUT SETTLEMENT

### MARCH 6, 2006

## 12-MONTH CLOSEOUT SETTLEMENT MARKET WITHDRAWALS ANALYSIS

	MONDAY	TUESDAY	WEDNESDAY	THURSDAY	FRIDAY	SATURDAY	SUNDAY
				1	2	3	4
DAM NYCA				382,976	378,727	340,546	328,396
DAM NON-NYCA				7,405	5,956	4,757	7,248
DAM WHEELS				3,464	5,200	14,827	11,600
DAM VIRTUAL				45,804	49,279	48,841	53,845
BALANCING NYCA				4,616	10,385	(2,366)	(1,348)
BALANCING NON-NYCA				7,512	250	2,933	6,405
BALANCING WHEELS				(488)	(325)	(6,505)	(4,111)
BALANCING VIRTUAL				(45,804)	(49,279)	(48,841)	(53,845)
UFE/LOSSES				9,161	6,111	6,507	5,653
	5	6	7	8	9	10	11
DAM NYCA	375,604	378,436	382,624	383,921	375,222	340,837	324,100
DAM NON-NYCA	7,164	7,541	6,044	8,479	6,657	9,386	12,920
DAM WHEELS	8,800	8,800	5,870	7,000	3,959	4,600	4,200
DAM VIRTUAL	51,264	46,352	48,960	54,252	51,856	56,067	56,713
BALANCING NYCA	4,091	6,225	6,393	3,409	3,661	131	10,502
BALANCING NON-NYCA	12,410	10,659	9,425	5,481	5,960	7,818	5,216
BALANCING WHEELS	(5,350)	(2,175)	(75)	(1,749)	0	225	0
BALANCING VIRTUAL	(51,264)	(46,352)	(48,960)	(54,252)	(51,856)	(56,067)	(56,714)
UFE/LOSSES	7,767	9,226	9,121	9,535	9,011	9,186	8,825
	12	13	14	15	16	17	18
DAM NYCA	382,036	377,574	379,293	383,485	378,464	338,291	318,157
DAM NON-NYCA	7,299	8,947	8,212	8,364	7,409	14,727	17,563
DAM WHEELS	4,000	4,000	5,265	4,441	5,700	7,200	5,000
DAM VIRTUAL	50,054	53,740	54,136	55,951	53,003	55,874	56,038
BALANCING NYCA	988	6,798	3,282	298	(1,569)	(244)	7,863
BALANCING NON-NYCA	10,321	6,089	7,236	5,995	5,507	5,350	9,566
BALANCING WHEELS	150	0	(1,165)	(447)	(725)	0	0
BALANCING VIRTUAL	(50,054)	(53,740)	(54,136)	(55,951)	(53,003)	(55,874)	(56,038)
UFE/LOSSES	8,656	9,330	9,551	10,219	10,119	8,529	8,526
	19	20	21	22	23	24	25
DAM NYCA	379,366	388,319	380,786	381,290	376,678	342,326	323,632
DAM NON-NYCA	10,994	9,411	9,305	7,807	8,739	12,077	20,105
DAM WHEELS	3,700	3,600	4,400	6,800	8,200	12,000	10,600
DAM VIRTUAL	50,061	45,263	54,641	54,619	56,348	51,352	59,064
BALANCING NYCA	5,582	4,162	5,854	3,255	1,179	(607)	414
BALANCING NON-NYCA	1,219	1,999	3,192	7,722	2,159	6,023	6,042
BALANCING WHEELS	195	239	(44)	414	(1,400)	(3,006)	(3,100)
BALANCING VIRTUAL	(50,061)	(45,263)	(54,641)	(54,619)	(56,348)	(51,352)	(59,064)
UFE/LOSSES	11,131	10,967	11,249	12,446	12,656	9,503	9,527
	26	27	28	29	30	31	
DAM NYCA	326,245	383,276	386,834	386,321	386,914	347,158	
DAM NON-NYCA	19,120	12,000	11,105	9,925	19,927	13,055	
DAM WHEELS	10,400	7,171	6,000	5,596	3,394	13,541	
DAM VIRTUAL	52,807	52,008	51,043	56,195	56,389	57,184	
BALANCING NYCA	9,318	(2,176)	174	3,460	7,269	7,444	
BALANCING NON-NYCA	4,342	9,542	11,137	6,577	5,802	3,635	
BALANCING WHEELS	(5,500)	(2,600)	(759)	521	(450)	(991)	
BALANCING VIRTUAL	(52,807)	(52,008)	(51,043)	(56,195)	(56,389)	(57,184)	
UFE/LOSSES	9,266	11,687	10,565	11,916	9,084	8,027	



FOR DISCUSSION PURPOSES ONLY



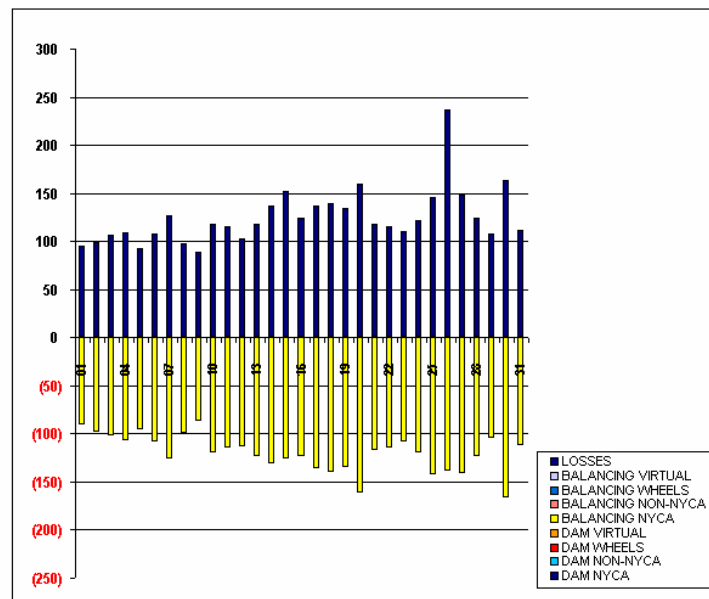
# SETTLEMENTS REPORT

## MAY 2003 CLOSEOUT SETTLEMENT

### MARCH 6, 2006

## CLOSEOUT SETTLEMENT MARKET WITHDRAWALS DELTA ANALYSIS

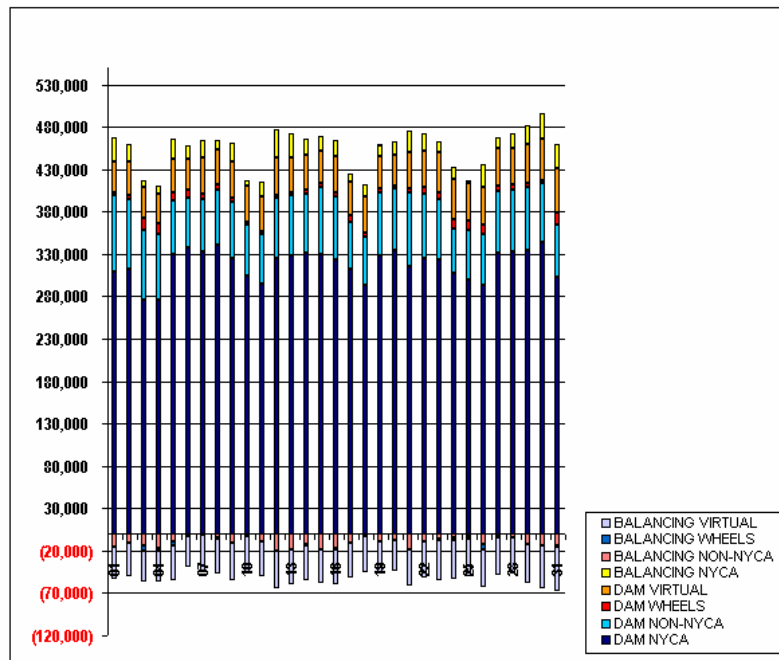
	MONDAY	TUESDAY	WEDNESDAY	THURSDAY	FRIDAY	SATURDAY	SUNDAY
				1	2	3	4
DAM NYCA				0	0	0	0
DAM NON-NYCA				0	0	0	0
DAM WHEELS				0	0	0	0
DAM VIRTUAL				0	0	0	0
BALANCING NYCA				(91)	(99)	(102)	(107)
BALANCING NON-NYCA				0	0	0	0
BALANCING WHEELS				0	0	0	0
BALANCING VIRTUAL				0	0	0	0
UFE/LOSSES				95	99	106	109
	5	6	7	8	9	10	11
DAM NYCA	0	0	0	0	0	0	0
DAM NON-NYCA	0	0	0	0	0	0	0
DAM WHEELS	0	0	0	0	0	0	0
DAM VIRTUAL	0	0	0	0	0	0	0
BALANCING NYCA	(96)	(109)	(126)	(100)	(87)	(119)	(115)
BALANCING NON-NYCA	0	0	0	0	0	0	0
BALANCING WHEELS	0	0	0	0	0	0	0
BALANCING VIRTUAL	0	0	0	0	0	0	0
UFE/LOSSES	93	108	126	97	89	118	116
	12	13	14	15	16	17	18
DAM NYCA	0	0	0	0	0	0	0
DAM NON-NYCA	0	0	0	0	0	0	0
DAM WHEELS	0	0	0	0	0	0	0
DAM VIRTUAL	0	0	0	0	0	0	0
BALANCING NYCA	(113)	(123)	(131)	(126)	(123)	(136)	(140)
BALANCING NON-NYCA	0	0	0	0	0	0	0
BALANCING WHEELS	0	0	0	0	0	0	0
BALANCING VIRTUAL	0	0	0	0	0	0	0
UFE/LOSSES	102	118	137	152	124	137	140
	19	20	21	22	23	24	25
DAM NYCA	0	0	0	0	0	0	0
DAM NON-NYCA	0	0	0	0	0	0	0
DAM WHEELS	0	0	0	0	0	0	0
DAM VIRTUAL	0	0	0	0	0	0	0
BALANCING NYCA	(135)	(161)	(117)	(114)	(108)	(120)	(143)
BALANCING NON-NYCA	0	0	0	0	0	0	0
BALANCING WHEELS	0	0	0	0	0	0	0
BALANCING VIRTUAL	0	0	0	0	0	0	0
UFE/LOSSES	134	160	119	116	111	121	146
	26	27	28	29	30	31	
DAM NYCA	0	0	0	0	0	0	
DAM NON-NYCA	0	0	0	0	0	0	
DAM WHEELS	0	0	0	0	0	0	
DAM VIRTUAL	0	0	0	0	0	0	
BALANCING NYCA	(139)	(141)	(123)	(105)	(166)	(112)	
BALANCING NON-NYCA	0	0	0	0	0	0	
BALANCING WHEELS	0	0	0	0	0	0	
BALANCING VIRTUAL	0	0	0	0	0	0	
UFE/LOSSES	236	148	125	108	164	112	



SETTLEMENTS REPORT  
MAY 2003 CLOSEOUT SETTLEMENT  
MARCH 6, 2006

4-MONTH SETTLEMENT ADJUSTMENT MARKET SUPPLY ANALYSIS

	MONDAY	TUESDAY	WEDNESDAY	THURSDAY	FRIDAY	SATURDAY	SUNDAY
				1	2	3	4
DAM NYCA				309,935	313,042	275,414	276,484
DAM NON-NYCA				89,287	81,278	82,517	77,438
DAM WHEELS				3,464	5,200	14,827	11,600
DAM VIRTUAL				36,998	39,664	36,215	35,620
BALANCING NYCA				27,734	20,150	7,611	9,090
BALANCING NON-NYCA				(15,289)	(11,040)	(13,170)	(16,460)
BALANCING WHEELS				(488)	(325)	(6,505)	(4,111)
BALANCING VIRTUAL				(36,998)	(39,664)	(36,215)	(35,620)
	5	6	7	8	9	10	11
DAM NYCA	329,852	338,255	333,786	341,072	325,860	304,379	295,045
DAM NON-NYCA	63,492	58,850	60,930	64,382	66,488	59,610	57,843
DAM WHEELS	8,800	8,800	5,870	7,000	3,959	4,600	4,200
DAM VIRTUAL	40,694	35,769	43,117	41,276	43,468	42,339	40,860
BALANCING NYCA	22,640	16,070	20,524	10,273	21,168	6,063	16,895
BALANCING NON-NYCA	(8,895)	(1,087)	(1,628)	(4,900)	(11,008)	(2,691)	(8,822)
BALANCING WHEELS	(5,350)	(2,175)	(75)	(1,749)	0	225	0
BALANCING VIRTUAL	(40,694)	(35,769)	(43,117)	(41,276)	(43,468)	(42,339)	(40,860)
	12	13	14	15	16	17	18
DAM NYCA	325,242	328,803	331,439	329,195	322,832	312,461	293,701
DAM NON-NYCA	70,922	70,600	69,355	79,878	74,395	56,097	57,183
DAM WHEELS	4,000	4,000	5,265	4,441	5,700	7,200	5,000
DAM VIRTUAL	43,343	41,168	40,904	39,038	41,776	40,372	41,813
BALANCING NYCA	33,153	27,929	19,382	17,284	19,979	9,412	14,350
BALANCING NON-NYCA	(20,656)	(18,588)	(13,057)	(18,572)	(17,326)	(11,317)	(3,558)
BALANCING WHEELS	150	0	(1,165)	(447)	(725)	0	0
BALANCING VIRTUAL	(43,343)	(41,168)	(40,904)	(39,038)	(41,776)	(40,372)	(41,813)
	19	20	21	22	23	24	25
DAM NYCA	328,420	335,176	314,871	324,649	322,909	307,252	299,490
DAM NON-NYCA	74,977	72,346	87,426	76,828	71,219	52,333	59,057
DAM WHEELS	3,700	3,600	4,400	6,800	6,200	12,000	10,600
DAM VIRTUAL	37,773	36,193	42,744	42,863	47,737	46,446	44,836
BALANCING NYCA	13,861	14,859	26,091	20,469	12,903	14,024	3,013
BALANCING NON-NYCA	(8,965)	(7,521)	(18,003)	(9,453)	(5,622)	(4,588)	(3,144)
BALANCING WHEELS	195	239	(44)	414	(1,400)	(3,086)	(3,100)
BALANCING VIRTUAL	(37,773)	(36,193)	(42,744)	(42,863)	(47,737)	(46,446)	(44,836)
	26	27	28	29	30	31	
DAM NYCA	292,872	331,361	333,684	334,391	343,619	303,107	
DAM NON-NYCA	61,277	72,598	72,797	74,475	69,745	61,593	
DAM WHEELS	10,400	7,171	6,000	5,596	3,394	13,541	
DAM VIRTUAL	44,033	43,511	42,509	45,614	49,884	52,711	
BALANCING NYCA	26,769	12,762	17,125	21,144	29,792	28,851	
BALANCING NON-NYCA	(12,724)	(2,400)	(3,792)	(11,914)	(14,157)	(14,232)	
BALANCING WHEELS	(5,500)	(2,600)	(759)	521	(450)	(991)	
BALANCING VIRTUAL	(44,033)	(43,511)	(42,509)	(45,614)	(49,884)	(52,711)	



FOR DISCUSSION PURPOSES ONLY

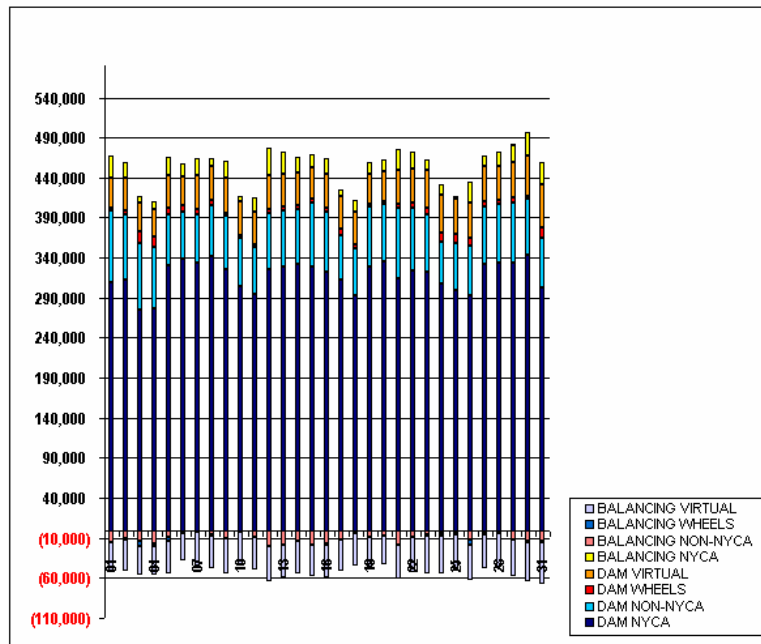
# SETTLEMENTS REPORT

## MAY 2003 CLOSEOUT SETTLEMENT

### MARCH 6, 2006

## 12-MONTH CLOSEOUT SETTLEMENT MARKET SUPPLY ANALYSIS

	MONDAY	TUESDAY	WEDNESDAY	THURSDAY	FRIDAY	SATURDAY	SUNDAY
				1	2	3	4
DAM NYCA				309,935	313,042	275,414	276,484
DAM NON-NYCA				69,287	61,278	62,517	77,438
DAM WHEELS				3,464	5,200	14,827	11,600
DAM VIRTUAL				36,998	39,664	36,215	35,620
BALANCING NYCA				27,738	20,150	7,616	9,092
BALANCING NON-NYCA				(15,289)	(11,040)	(13,170)	(16,460)
BALANCING WHEELS				(488)	(325)	(6,505)	(4,111)
BALANCING VIRTUAL				(36,998)	(39,664)	(36,215)	(35,620)
	5	6	7	8	9	10	11
DAM NYCA	329,852	338,255	333,786	341,072	325,860	304,379	295,045
DAM NON-NYCA	63,492	58,850	60,930	64,382	66,488	59,610	57,843
DAM WHEELS	8,800	8,800	5,870	7,000	3,959	4,600	4,200
DAM VIRTUAL	40,694	35,769	43,117	41,276	43,468	42,339	40,860
BALANCING NYCA	22,636	16,069	20,524	10,271	21,170	6,061	16,896
BALANCING NON-NYCA	(8,895)	(1,087)	(1,628)	(4,900)	(11,008)	(2,691)	(8,822)
BALANCING WHEELS	(5,350)	(2,175)	(75)	(1,749)	0	225	0
BALANCING VIRTUAL	(40,694)	(35,769)	(43,117)	(41,276)	(43,468)	(42,339)	(40,860)
	12	13	14	15	16	17	18
DAM NYCA	325,242	328,803	331,439	329,195	322,832	312,461	293,701
DAM NON-NYCA	70,922	70,600	69,355	79,878	74,395	56,097	57,183
DAM WHEELS	4,000	4,000	5,265	4,441	5,700	7,200	5,000
DAM VIRTUAL	43,343	41,168	40,304	39,038	41,776	40,372	41,813
BALANCING NYCA	33,142	27,923	19,388	17,310	19,979	9,412	14,349
BALANCING NON-NYCA	(20,656)	(18,588)	(13,057)	(18,572)	(17,326)	(11,317)	(3,558)
BALANCING WHEELS	150	0	(1,165)	(447)	(725)	0	0
BALANCING VIRTUAL	(43,343)	(41,168)	(40,304)	(39,038)	(41,776)	(40,372)	(41,813)
	19	20	21	22	23	24	25
DAM NYCA	328,420	335,176	314,871	324,649	322,909	307,252	299,490
DAM NON-NYCA	74,977	72,346	87,426	76,828	71,219	52,333	59,057
DAM WHEELS	3,700	3,600	4,400	6,800	8,200	12,000	10,600
DAM VIRTUAL	37,773	36,193	42,744	42,863	47,737	46,446	44,836
BALANCING NYCA	13,860	14,858	26,092	20,471	12,905	14,025	3,016
BALANCING NON-NYCA	(8,965)	(7,521)	(18,003)	(9,453)	(5,622)	(4,588)	(3,144)
BALANCING WHEELS	195	239	(44)	414	(1,400)	(3,086)	(3,100)
BALANCING VIRTUAL	(37,773)	(36,193)	(42,744)	(42,863)	(47,737)	(46,446)	(44,836)
	26	27	28	29	30	31	
DAM NYCA	292,872	331,361	333,684	334,391	343,619	303,107	
DAM NON-NYCA	61,277	72,598	72,797	74,475	69,745	61,593	
DAM WHEELS	10,400	7,171	6,000	5,596	3,394	13,541	
DAM VIRTUAL	44,033	43,511	42,509	45,614	49,884	52,711	
BALANCING NYCA	26,866	12,769	17,126	21,147	29,789	28,851	
BALANCING NON-NYCA	(12,724)	(2,400)	(3,792)	(11,914)	(14,157)	(14,232)	
BALANCING WHEELS	(5,500)	(2,600)	(759)	521	(450)	(991)	
BALANCING VIRTUAL	(44,033)	(43,511)	(42,509)	(45,614)	(49,884)	(52,711)	



SETTLEMENTS REPORT  
MAY 2003 CLOSEOUT SETTLEMENT  
MARCH 6, 2006

CLOSEOUT SETTLEMENT MARKET SUPPLY DELTA ANALYSIS

	MONDAY	TUESDAY	WEDNESDAY	THURSDAY	FRIDAY	SATURDAY	SUNDAY
				1	2	3	4
DAM NYCA				0	0	0	0
DAM NON-NYCA				0	0	0	0
DAM WHEELS				0	0	0	0
DAM VIRTUAL				0	0	0	0
BALANCING NYCA				4	0	5	2
BALANCING NON-NYCA				0	0	0	0
BALANCING WHEELS				0	0	0	0
BALANCING VIRTUAL				0	0	0	0
	5	6	7	8	9	10	11
DAM NYCA	0	0	0	0	0	0	0
DAM NON-NYCA	0	0	0	0	0	0	0
DAM WHEELS	0	0	0	0	0	0	0
DAM VIRTUAL	0	0	0	0	0	0	0
BALANCING NYCA	(3)	(1)	1	(3)	2	(2)	1
BALANCING NON-NYCA	0	0	0	0	0	0	0
BALANCING WHEELS	0	0	0	0	0	0	0
BALANCING VIRTUAL	0	0	0	0	0	0	0
	12	13	14	15	16	17	18
DAM NYCA	0	0	0	0	0	0	0
DAM NON-NYCA	0	0	0	0	0	0	0
DAM WHEELS	0	0	0	0	0	0	0
DAM VIRTUAL	0	0	0	0	0	0	0
BALANCING NYCA	(11)	(5)	6	25	1	0	(0)
BALANCING NON-NYCA	0	0	0	0	0	0	0
BALANCING WHEELS	0	0	0	0	0	0	0
BALANCING VIRTUAL	0	0	0	0	0	0	0
	19	20	21	22	23	24	25
DAM NYCA	0	0	0	0	0	0	0
DAM NON-NYCA	0	0	0	0	0	0	0
DAM WHEELS	0	0	0	0	0	0	0
DAM VIRTUAL	0	0	0	0	0	0	0
BALANCING NYCA	(1)	(2)	1	1	2	1	3
BALANCING NON-NYCA	0	0	0	0	0	0	0
BALANCING WHEELS	0	0	0	0	0	0	0
BALANCING VIRTUAL	0	0	0	0	0	0	0
	26	27	28	29	30	31	
DAM NYCA	0	0	0	0	0	0	
DAM NON-NYCA	0	0	0	0	0	0	
DAM WHEELS	0	0	0	0	0	0	
DAM VIRTUAL	0	0	0	0	0	0	
BALANCING NYCA	97	7	1	3	(2)	0	
BALANCING NON-NYCA	0	0	0	0	0	0	
BALANCING WHEELS	0	0	0	0	0	0	
BALANCING VIRTUAL	0	0	0	0	0	0	

