

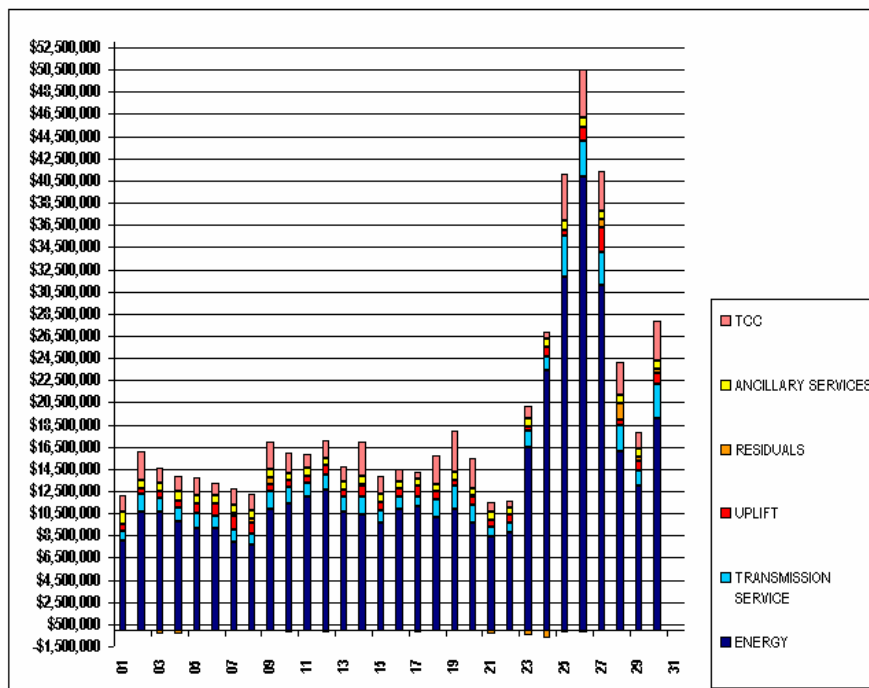
SETTLEMENTS REPORT

JUNE 2003 CLOSEOUT SETTLEMENT

MARCH 6, 2006

4-MONTH SETTLEMENT ADJUSTMENT MARKET COSTS ANALYSIS

	MONDAY	TUESDAY	WEDNESDAY	THURSDAY	FRIDAY	SATURDAY	SUNDAY
ENERGY							1
TRANSMISSION SERVICE							\$8,005,286.57
UPLIFT							\$900,533.98
RESIDUALS							\$608,109.83
ANCILLARY SERVICES							(\$42,888.48)
TCC							\$1,092,297.57
	2	3	4	5	6	7	8
ENERGY	\$10,603,047.76	\$10,612,692.94	\$9,800,098.33	\$9,171,450.56	\$9,138,831.16	\$7,917,203.19	\$7,655,408.04
TRANSMISSION SERVICE	\$1,691,689.41	\$1,280,061.95	\$1,242,020.36	\$1,320,104.34	\$1,184,237.50	\$1,086,014.22	\$954,931.42
UPLIFT	\$409,389.81	\$653,614.81	\$596,797.24	\$894,130.63	\$1,078,422.06	\$1,261,209.95	\$1,017,515.97
RESIDUALS	(\$9,310.59)	(\$367,291.56)	(\$334,297.66)	(\$26,951.48)	(\$114,497.71)	\$197,636.58	\$447,922.89
ANCILLARY SERVICES	\$774,669.38	\$682,895.94	\$840,909.96	\$724,010.94	\$676,992.57	\$716,221.13	\$671,429.73
TCC	\$2,618,506.26	\$1,311,209.68	\$1,399,855.10	\$1,612,832.49	\$1,134,986.68	\$1,485,664.10	\$1,459,676.81
	9	10	11	12	13	14	15
ENERGY	\$10,900,367.07	\$11,404,096.60	\$11,992,983.04	\$12,583,845.87	\$10,663,183.19	\$10,338,251.63	\$9,629,071.68
TRANSMISSION SERVICE	\$1,579,121.54	\$1,407,851.01	\$1,185,788.53	\$1,405,482.32	\$1,279,886.46	\$1,680,622.85	\$1,109,464.22
UPLIFT	\$662,082.09	\$652,972.24	\$699,266.49	\$812,570.89	\$668,609.87	\$915,344.52	\$779,407.80
RESIDUALS	\$583,103.56	(\$315,656.12)	(\$183,930.75)	(\$289,169.37)	(\$137,836.22)	\$212,646.50	(\$49,460.17)
ANCILLARY SERVICES	\$700,115.46	\$688,005.83	\$714,355.94	\$728,739.14	\$709,616.41	\$712,264.87	\$746,639.96
TCC	\$2,542,777.86	\$1,762,917.52	\$1,189,260.92	\$1,503,528.59	\$1,464,350.60	\$3,093,993.75	\$1,621,105.40
	16	17	18	19	20	21	22
ENERGY	\$10,846,044.64	\$11,089,838.19	\$10,199,397.80	\$10,938,893.59	\$9,648,972.24	\$8,354,052.86	\$8,800,636.54
TRANSMISSION SERVICE	\$1,172,439.89	\$923,319.22	\$1,591,872.53	\$2,092,199.52	\$1,667,941.89	\$872,609.51	\$859,365.11
UPLIFT	\$666,606.94	\$928,840.45	\$649,475.13	\$461,328.71	\$679,199.06	\$686,967.32	\$705,649.46
RESIDUALS	(\$155,268.51)	(\$233,980.73)	(\$31,271.39)	(\$68,651.91)	\$66,871.13	(\$354,416.62)	(\$93,857.76)
ANCILLARY SERVICES	\$685,643.53	\$688,411.45	\$706,374.14	\$704,969.22	\$712,936.81	\$705,256.93	\$701,125.05
TCC	\$1,157,911.93	\$573,805.63	\$2,610,373.63	\$3,769,210.67	\$2,615,827.07	\$892,381.31	\$553,054.19
	23	24	25	26	27	28	29
ENERGY	\$16,485,446.77	\$23,439,920.05	\$31,861,519.78	\$40,830,857.84	\$31,064,692.02	\$16,097,266.60	\$13,045,442.09
TRANSMISSION SERVICE	\$1,457,577.67	\$1,193,349.91	\$3,672,411.92	\$3,206,295.53	\$2,967,420.88	\$2,307,936.43	\$1,316,918.67
UPLIFT	\$363,259.50	\$849,371.30	\$498,136.75	\$1,277,425.98	\$2,241,213.01	\$522,092.87	\$832,946.11
RESIDUALS	(\$563,819.53)	(\$775,365.61)	(\$285,091.69)	(\$257,941.80)	\$687,643.69	\$1,527,731.80	\$382,477.49
ANCILLARY SERVICES	\$697,660.91	\$756,258.46	\$837,651.46	\$909,518.00	\$862,216.54	\$700,912.84	\$727,250.75
TCC	\$1,195,554.56	\$574,090.67	\$4,260,897.00	\$4,288,189.85	\$3,473,151.97	\$2,998,718.73	\$1,503,872.20
	30						
ENERGY	\$19,087,496.72						
TRANSMISSION SERVICE	\$3,011,178.66						
UPLIFT	\$1,014,310.50						
RESIDUALS	\$380,552.94						
ANCILLARY SERVICES	\$831,915.81						
TCC	\$3,522,689.76						



FOR DISCUSSION PURPOSES ONLY

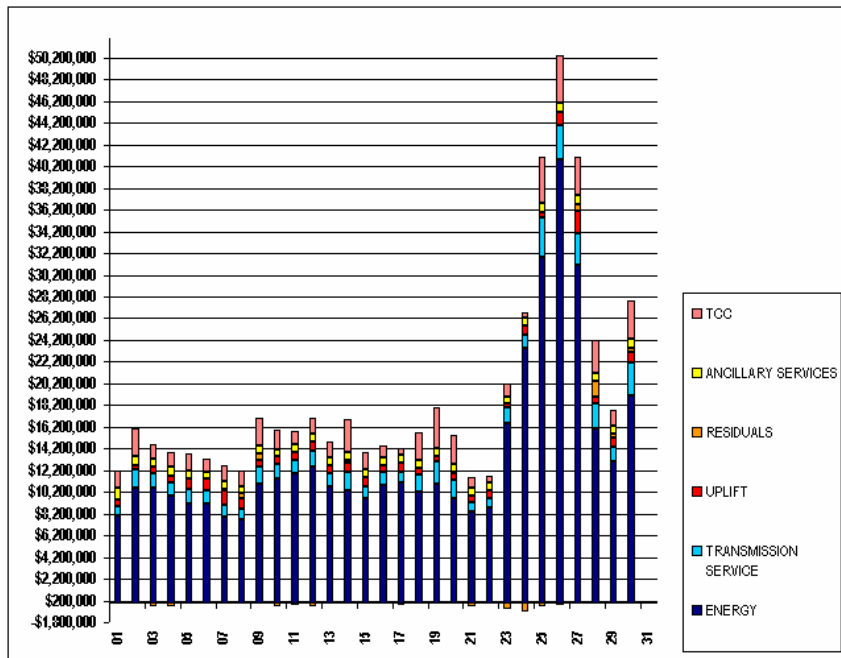
SETTLEMENTS REPORT

JUNE 2003 CLOSEOUT SETTLEMENT

MARCH 6, 2006

12-MONTH CLOSEOUT SETTLEMENT MARKET COSTS ANALYSIS

	MONDAY	TUESDAY	WEDNESDAY	THURSDAY	FRIDAY	SATURDAY	SUNDAY
							1
ENERGY							\$8,005,284.09
TRANSMISSION SERVICE							\$800,489.93
UPLIFT							\$606,796.98
RESIDUALS							(\$42,886.00)
ANCILLARY SERVICES							\$1,065,517.92
TCC							\$1,538,045.97
	2	3	4	5	6	7	8
ENERGY	\$10,590,929.15	\$10,612,692.70	\$9,800,094.33	\$9,171,446.14	\$9,138,826.57	\$7,917,200.21	\$7,655,405.26
TRANSMISSION SERVICE	\$1,691,496.51	\$1,280,014.74	\$1,241,983.85	\$1,320,060.42	\$1,184,177.10	\$1,085,961.28	\$954,883.93
UPLIFT	\$410,258.08	\$677,906.98	\$596,533.40	\$892,660.81	\$1,097,606.06	\$1,281,156.30	\$1,019,309.56
RESIDUALS	(\$7,893.36)	(\$367,483.02)	(\$334,010.85)	(\$26,575.05)	(\$114,484.34)	\$197,639.15	\$447,993.34
ANCILLARY SERVICES	\$769,325.72	\$679,368.60	\$840,709.14	\$725,865.84	\$675,490.26	\$712,732.95	\$668,459.42
TCC	\$2,619,344.16	\$1,311,119.05	\$1,399,634.51	\$1,612,524.12	\$1,134,902.32	\$1,483,994.41	\$1,456,972.24
	9	10	11	12	13	14	15
ENERGY	\$10,900,351.67	\$11,404,095.69	\$11,979,409.48	\$12,583,839.46	\$10,663,180.45	\$10,323,891.01	\$9,629,069.02
TRANSMISSION SERVICE	\$1,579,075.72	\$1,407,807.68	\$1,185,602.44	\$1,405,435.67	\$1,279,849.89	\$1,680,410.95	\$1,109,412.51
UPLIFT	\$666,576.11	\$655,384.12	\$689,430.04	\$816,199.11	\$672,564.83	\$904,802.35	\$781,429.39
RESIDUALS	\$583,248.89	(\$315,299.57)	(\$180,165.08)	(\$288,490.63)	(\$138,226.63)	\$217,235.24	(\$49,368.25)
ANCILLARY SERVICES	\$697,271.55	\$686,658.23	\$710,251.57	\$728,809.98	\$708,854.18	\$711,788.61	\$746,355.59
TCC	\$2,540,911.50	\$1,762,591.48	\$1,189,080.23	\$1,503,316.81	\$1,464,477.18	\$3,096,010.54	\$1,621,498.13
	16	17	18	19	20	21	22
ENERGY	\$10,846,040.93	\$11,089,834.81	\$10,199,393.81	\$10,938,876.22	\$9,648,993.85	\$8,354,049.31	\$8,800,633.62
TRANSMISSION SERVICE	\$1,172,384.80	\$923,270.00	\$1,591,830.66	\$2,092,162.79	\$1,667,900.41	\$872,558.94	\$859,235.31
UPLIFT	\$663,122.91	\$931,873.32	\$637,287.56	\$464,986.05	\$663,107.79	\$684,701.13	\$711,143.41
RESIDUALS	(\$155,123.64)	(\$233,968.62)	(\$31,150.75)	(\$68,111.40)	\$86,098.20	(\$354,198.72)	(\$93,533.01)
ANCILLARY SERVICES	\$685,106.19	\$685,577.36	\$702,890.75	\$700,917.44	\$712,979.24	\$704,981.25	\$698,383.59
TCC	\$1,157,893.12	\$573,805.63	\$2,614,115.11	\$3,774,773.30	\$2,619,553.99	\$890,646.81	\$553,054.19
	23	24	25	26	27	28	29
ENERGY	\$16,485,443.18	\$23,439,911.57	\$31,861,507.97	\$40,830,828.83	\$31,064,666.53	\$16,097,251.73	\$13,045,434.19
TRANSMISSION SERVICE	\$1,457,415.61	\$1,193,262.18	\$3,672,291.32	\$3,206,020.35	\$2,967,148.50	\$2,307,887.68	\$1,316,871.77
UPLIFT	\$387,680.10	\$831,641.12	\$438,929.76	\$1,141,628.12	\$2,028,256.23	\$524,207.72	\$820,961.96
RESIDUALS	(\$563,421.86)	(\$774,370.47)	(\$285,072.39)	(\$247,556.02)	\$686,522.48	\$1,527,992.29	\$382,923.36
ANCILLARY SERVICES	\$686,803.02	\$746,074.25	\$828,596.65	\$904,308.82	\$859,567.29	\$701,326.98	\$734,649.97
TCC	\$1,195,554.56	\$574,090.67	\$4,260,290.76	\$4,286,793.26	\$3,472,713.11	\$2,996,718.73	\$1,503,871.58
	30						
ENERGY	\$19,087,485.67						
TRANSMISSION SERVICE	\$3,011,145.54						
UPLIFT	\$947,188.39						
RESIDUALS	\$381,512.85						
ANCILLARY SERVICES	\$831,623.16						
TCC	\$3,522,673.01						



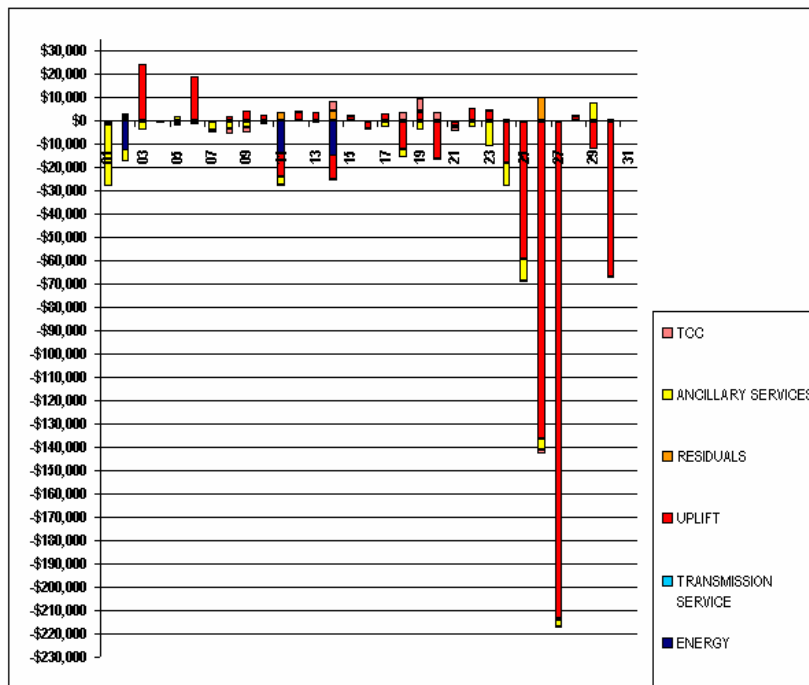
SETTLEMENTS REPORT

JUNE 2003 CLOSEOUT SETTLEMENT

MARCH 6, 2006

CLOSEOUT SETTLEMENT MARKET COSTS DELTA ANALYSIS

	MONDAY	TUESDAY	WEDNESDAY	THURSDAY	FRIDAY	SATURDAY	SUNDAY
ENERGY							1
TRANSMISSION SERVICE							(\$2.48)
UPLIFT							(\$44.05)
RESIDUALS							(\$1,312.85)
ANCILLARY SERVICES							\$2.48
TCC							(\$26,779.65)
							\$288.42
	2	3	4	5	6	7	8
ENERGY	(\$12,118.61)	(\$0.24)	(\$4.00)	(\$4.42)	(\$4.59)	(\$2.98)	(\$2.78)
TRANSMISSION SERVICE	(\$192.90)	(\$47.21)	(\$36.51)	(\$43.92)	(\$60.40)	(\$52.94)	(\$47.49)
UPLIFT	\$868.27	\$24,292.17	(\$263.84)	(\$1,469.82)	\$19,184.00	(\$53.65)	\$1,793.59
RESIDUALS	\$1,417.23	(\$191.46)	\$286.81	\$376.43	\$13.37	\$2.57	\$70.45
ANCILLARY SERVICES	(\$5,343.66)	(\$3,527.34)	(\$200.82)	\$1,854.90	(\$1,502.31)	(\$3,488.18)	(\$2,970.31)
TCC	\$837.90	(\$90.63)	(\$220.59)	(\$308.37)	(\$84.36)	(\$1,669.69)	(\$2,704.57)
	9	10	11	12	13	14	15
ENERGY	(\$15.40)	(\$0.91)	(\$13,573.56)	(\$6.41)	(\$2.74)	(\$14,360.62)	(\$2.66)
TRANSMISSION SERVICE	(\$45.82)	(\$43.33)	(\$186.09)	(\$46.65)	(\$36.57)	(\$211.90)	(\$51.71)
UPLIFT	\$4,494.02	\$2,411.88	(\$9,836.45)	\$3,628.22	\$3,954.96	(\$10,542.17)	\$2,021.59
RESIDUALS	\$145.33	\$356.55	\$3,765.67	\$678.74	(\$390.41)	\$4,588.74	\$91.92
ANCILLARY SERVICES	(\$2,843.91)	(\$1,347.60)	(\$4,104.37)	\$70.84	(\$762.23)	(\$476.26)	(\$284.37)
TCC	(\$1,866.36)	(\$326.04)	(\$180.69)	(\$211.78)	\$126.58	\$4,016.79	\$392.73
	16	17	18	19	20	21	22
ENERGY	(\$3.71)	(\$3.38)	(\$3.99)	(\$17.37)	\$21.61	(\$3.55)	(\$2.92)
TRANSMISSION SERVICE	(\$55.09)	(\$49.22)	(\$41.87)	(\$36.73)	(\$41.48)	(\$50.57)	(\$129.80)
UPLIFT	(\$3,484.03)	\$3,032.87	(\$12,187.57)	\$3,657.34	(\$16,091.27)	(\$2,266.19)	\$5,493.95
RESIDUALS	\$144.87	\$12.11	\$120.64	\$540.51	(\$772.93)	\$217.90	\$324.75
ANCILLARY SERVICES	(\$537.34)	(\$2,834.09)	(\$3,483.39)	(\$4,051.78)	\$42.43	(\$275.68)	(\$2,741.46)
TCC	(\$18.81)	\$0.00	\$3,741.48	\$5,562.63	\$3,726.92	(\$1,734.50)	\$0.00
	23	24	25	26	27	28	29
ENERGY	(\$3.59)	(\$8.48)	(\$11.81)	(\$29.01)	(\$25.49)	(\$14.87)	(\$7.90)
TRANSMISSION SERVICE	(\$162.06)	(\$87.73)	(\$120.60)	(\$275.18)	(\$272.38)	(\$48.75)	(\$46.90)
UPLIFT	\$4,320.60	(\$17,730.18)	(\$59,206.99)	(\$135,797.86)	(\$212,956.78)	\$2,114.85	(\$11,986.15)
RESIDUALS	\$397.67	\$995.14	\$19.30	\$10,385.78	(\$1,121.21)	\$260.49	\$445.87
ANCILLARY SERVICES	(\$10,857.89)	(\$10,184.21)	(\$9,054.81)	(\$5,209.18)	(\$2,649.25)	\$414.14	\$7,399.22
TCC	\$0.00	\$0.00	(\$606.24)	(\$1,396.59)	(\$438.86)	\$0.00	(\$0.62)
	30						
ENERGY	(\$11.05)						
TRANSMISSION SERVICE	(\$33.12)						
UPLIFT	(\$67,122.11)						
RESIDUALS	\$859.91						
ANCILLARY SERVICES	(\$292.65)						
TCC	(\$16.75)						



FOR DISCUSSION PURPOSES ONLY

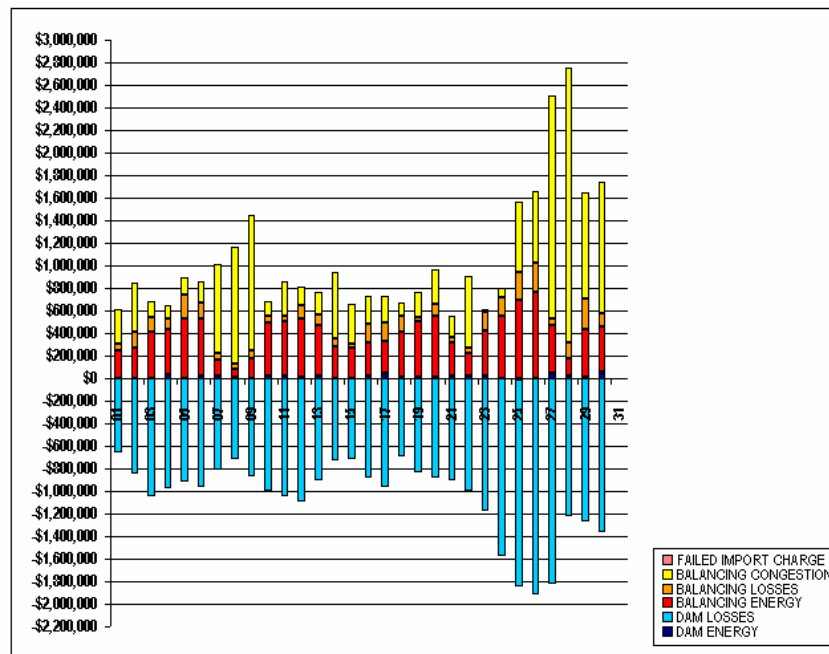
SETTLEMENTS REPORT

JUNE 2003 CLOSEOUT SETTLEMENT

MARCH 6, 2006

4-MONTH SETTLEMENT ADJUSTMENT MARKET RESIDUALS ANALYSIS

	MONDAY	TUESDAY	WEDNESDAY	THURSDAY	FRIDAY	SATURDAY	SUNDAY
							1
DAM ENERGY							\$3,242.11
DAM LOSSES							(\$655,081.61)
BALANCING ENERGY							\$242,815.33
BALANCING LOSSES							\$55,251.93
BALANCING CONGESTION							\$310,883.76
FAILED IMPORT CHARGE							\$0.00
	2	3	4	5	6	7	8
DAM ENERGY	\$4,463.76	\$1,568.79	\$34,339.19	\$4,543.58	\$19,033.62	\$18,060.29	\$8,668.98
DAM LOSSES	(\$852,273.62)	(\$1,051,275.49)	(\$975,610.16)	(\$922,511.49)	(\$968,051.35)	(\$815,883.60)	(\$721,623.37)
BALANCING ENERGY	\$263,606.93	\$405,394.55	\$405,355.49	\$528,237.64	\$513,664.58	\$141,655.79	\$73,925.47
BALANCING LOSSES	\$142,881.21	\$137,867.98	\$90,093.45	\$212,844.53	\$133,860.47	\$65,918.42	\$45,371.47
BALANCING CONGESTION	\$432,011.13	\$139,152.61	\$111,524.37	\$149,934.26	\$186,994.97	\$787,885.68	\$1,041,580.34
FAILED IMPORT CHARGE	\$0.00	\$0.00	\$0.00	\$0.00	\$0.00	\$0.00	\$0.00
	9	10	11	12	13	14	15
DAM ENERGY	\$931.13	\$26,054.23	\$20,822.66	\$13,175.75	\$27,642.14	\$4,301.29	\$2,440.26
DAM LOSSES	(\$864,921.26)	(\$994,119.49)	(\$1,041,588.07)	(\$1,099,699.94)	(\$902,243.54)	(\$729,313.02)	(\$712,690.69)
BALANCING ENERGY	\$175,206.64	\$462,213.20	\$482,910.59	\$512,869.29	\$444,922.88	\$274,106.67	\$268,302.86
BALANCING LOSSES	\$76,425.42	\$61,842.47	\$51,243.85	\$123,479.47	\$87,070.44	\$76,042.22	\$39,854.95
BALANCING CONGESTION	\$1,195,461.63	\$128,353.47	\$302,680.22	\$161,006.06	\$204,771.86	\$587,509.34	\$352,652.45
FAILED IMPORT CHARGE	\$0.00	\$0.00	\$0.00	\$0.00	\$0.00	\$0.00	\$0.00
	16	17	18	19	20	21	22
DAM ENERGY	\$23,051.34	\$43,782.14	\$17,065.56	\$6,209.74	\$7,344.56	\$21,874.11	\$20,135.44
DAM LOSSES	(\$882,037.23)	(\$959,359.75)	(\$698,294.45)	(\$830,665.56)	(\$877,703.95)	(\$907,402.36)	(\$998,905.31)
BALANCING ENERGY	\$299,786.89	\$287,864.14	\$395,205.48	\$499,713.15	\$541,920.82	\$291,180.36	\$198,421.32
BALANCING LOSSES	\$159,470.50	\$157,931.06	\$138,044.37	\$39,810.10	\$113,262.89	\$47,148.07	\$56,411.04
BALANCING CONGESTION	\$244,459.99	\$235,801.68	\$116,707.65	\$216,280.66	\$302,046.81	\$192,783.20	\$630,079.75
FAILED IMPORT CHARGE	\$0.00	\$0.00	\$0.00	\$0.00	\$0.00	\$0.00	\$0.00
	23	24	25	26	27	28	29
DAM ENERGY	\$23,218.32	(\$3,934.55)	(\$8,973.09)	\$809.21	\$51,846.80	\$27,725.53	\$12,619.82
DAM LOSSES	(\$1,178,025.56)	(\$1,573,418.49)	(\$1,840,448.04)	(\$1,920,633.64)	(\$1,820,544.61)	(\$1,220,645.12)	(\$1,270,272.06)
BALANCING ENERGY	\$400,886.08	\$553,093.58	\$697,665.04	\$761,135.14	\$413,983.89	\$145,712.29	\$418,088.74
BALANCING LOSSES	\$168,549.24	\$170,332.83	\$247,486.26	\$264,467.69	\$67,750.94	\$138,439.12	\$278,902.31
BALANCING CONGESTION	\$21,552.39	\$78,561.02	\$619,178.14	\$636,279.80	\$1,374,606.67	\$2,436,499.98	\$943,136.68
FAILED IMPORT CHARGE	\$0.00	\$0.00	\$0.00	\$0.00	\$0.00	\$0.00	\$0.00
	30						
DAM ENERGY	\$66,677.77						
DAM LOSSES	(\$1,359,366.25)						
BALANCING ENERGY	\$387,954.47						
BALANCING LOSSES	\$119,560.47						
BALANCING CONGESTION	\$1,165,726.48						
FAILED IMPORT CHARGE	\$0.00						



FOR DISCUSSION PURPOSES ONLY

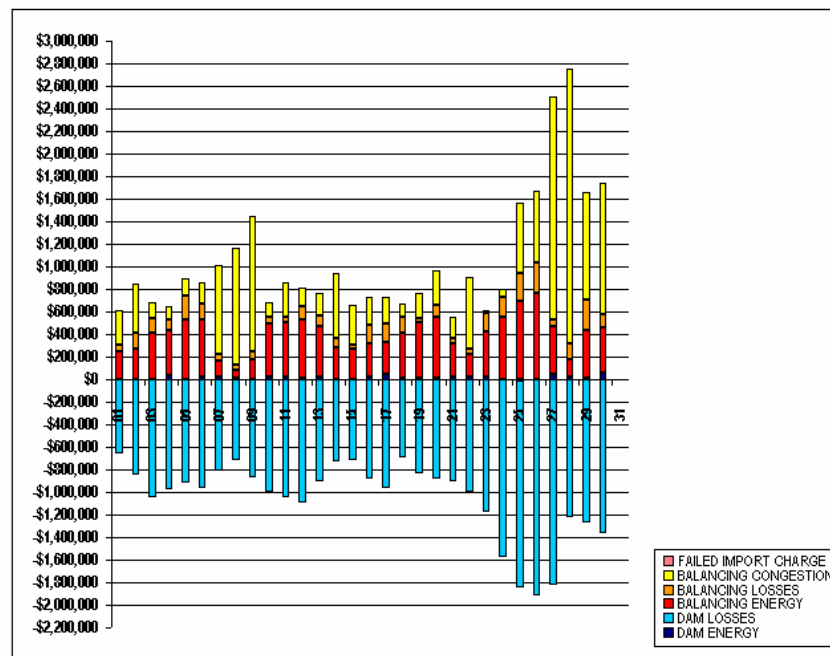
SETTLEMENTS REPORT

JUNE 2003 CLOSEOUT SETTLEMENT

MARCH 6, 2006

12-MONTH CLOSEOUT SETTLEMENT MARKET RESIDUALS ANALYSIS

	MONDAY	TUESDAY	WEDNESDAY	THURSDAY	FRIDAY	SATURDAY	SUNDAY
							1
DAM ENERGY							\$3,242.11
DAM LOSSES							(\$655,081.61)
BALANCING ENERGY							\$242,817.14
BALANCING LOSSES							\$65,252.12
BALANCING CONGESTION							\$310,884.24
FAILED IMPORT CHARGE							\$0.00
	2	3	4	5	6	7	8
DAM ENERGY	\$4,463.95	\$1,568.87	\$34,340.41	\$4,543.65	\$19,034.30	\$18,060.29	\$8,668.98
DAM LOSSES	(\$852,302.20)	(\$1,051,322.00)	(\$975,652.70)	(\$922,544.08)	(\$968,098.82)	(\$815,883.60)	(\$721,623.37)
BALANCING ENERGY	\$264,934.07	\$405,352.68	\$405,636.34	\$528,569.70	\$513,705.57	\$141,657.74	\$73,922.69
BALANCING LOSSES	\$142,980.78	\$137,771.82	\$80,118.08	\$212,877.18	\$133,869.00	\$65,918.58	\$45,348.57
BALANCING CONGESTION	\$452,030.04	\$159,145.61	\$111,547.02	\$149,978.50	\$187,005.61	\$787,886.14	\$1,041,676.47
FAILED IMPORT CHARGE	\$0.00	\$0.00	\$0.00	\$0.00	\$0.00	\$0.00	\$0.00
	9	10	11	12	13	14	15
DAM ENERGY	\$931.11	\$26,054.47	\$20,822.82	\$13,175.74	\$27,642.72	\$4,301.34	\$2,440.26
DAM LOSSES	(\$865,047.56)	(\$894,160.72)	(\$1,041,616.37)	(\$1,099,713.69)	(\$902,277.46)	(\$729,333.04)	(\$712,690.69)
BALANCING ENERGY	\$175,245.66	\$462,387.68	\$486,686.84	\$513,459.53	\$444,675.83	\$278,375.24	\$268,368.14
BALANCING LOSSES	\$76,497.95	\$62,065.85	\$51,263.72	\$123,523.64	\$87,055.60	\$76,188.39	\$39,841.20
BALANCING CONGESTION	\$1,195,621.73	\$128,353.15	\$302,677.91	\$161,064.15	\$204,676.68	\$587,703.31	\$352,652.84
FAILED IMPORT CHARGE	\$0.00	\$0.00	\$0.00	\$0.00	\$0.00	\$0.00	\$0.00
	16	17	18	19	20	21	22
DAM ENERGY	\$23,052.09	\$43,783.50	\$17,065.75	\$6,209.70	\$7,344.57	\$21,874.11	\$20,135.44
DAM LOSSES	(\$882,074.94)	(\$959,387.50)	(\$898,315.31)	(\$830,687.58)	(\$877,706.29)	(\$907,402.36)	(\$998,905.31)
BALANCING ENERGY	\$299,943.61	\$287,888.63	\$395,312.39	\$500,154.91	\$541,228.68	\$291,328.87	\$198,720.96
BALANCING LOSSES	\$159,485.17	\$157,937.73	\$138,054.97	\$39,841.62	\$113,191.56	\$47,157.87	\$56,432.79
BALANCING CONGESTION	\$244,470.43	\$235,809.02	\$116,731.45	\$216,369.95	\$302,039.68	\$192,842.79	\$630,083.11
FAILED IMPORT CHARGE	\$0.00	\$0.00	\$0.00	\$0.00	\$0.00	\$0.00	\$0.00
	23	24	25	26	27	28	29
DAM ENERGY	\$23,218.38	(\$3,934.55)	(\$8,973.10)	\$809.17	\$51,847.10	\$27,726.91	\$12,619.82
DAM LOSSES	(\$1,178,028.51)	(\$1,573,418.49)	(\$1,840,453.76)	(\$1,920,693.83)	(\$1,820,554.20)	(\$1,220,684.28)	(\$1,270,278.14)
BALANCING ENERGY	\$401,275.46	\$553,908.12	\$697,836.07	\$765,368.00	\$414,051.23	\$145,879.32	\$418,237.91
BALANCING LOSSES	\$168,557.01	\$170,384.23	\$247,431.19	\$265,046.18	\$67,740.80	\$138,441.93	\$278,915.86
BALANCING CONGESTION	\$21,555.80	\$78,690.22	\$619,087.21	\$641,914.46	\$1,973,437.55	\$2,436,628.41	\$943,427.91
FAILED IMPORT CHARGE	\$0.00	\$0.00	\$0.00	\$0.00	\$0.00	\$0.00	\$0.00
	30						
DAM ENERGY	\$56,678.45						
DAM LOSSES	(\$1,359,385.36)						
BALANCING ENERGY	\$398,495.28						
BALANCING LOSSES	\$119,864.95						
BALANCING CONGESTION	\$1,185,859.53						
FAILED IMPORT CHARGE	\$0.00						



FOR DISCUSSION PURPOSES ONLY

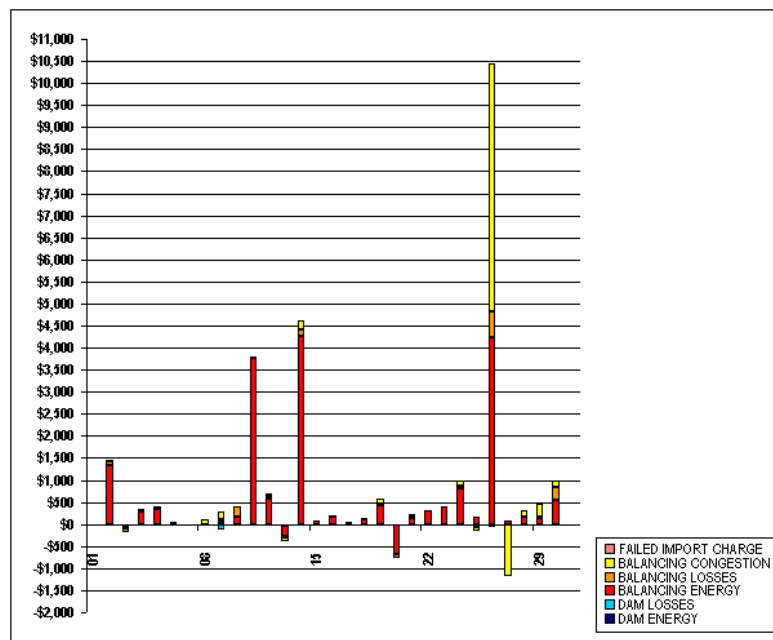
SETTLEMENTS REPORT

JUNE 2003 CLOSEOUT SETTLEMENT

MARCH 6, 2006

CLOSEOUT SETTLEMENT MARKET RESIDUALS DELTA ANALYSIS

	MONDAY	TUESDAY	WEDNESDAY	THURSDAY	FRIDAY	SATURDAY	SUNDAY
							1
DAM ENERGY							\$0.00
DAM LOSSES							\$0.00
BALANCING ENERGY							\$1.81
BALANCING LOSSES							\$0.19
BALANCING CONGESTION							\$0.48
FAILED IMPORT CHARGE							\$0.00
	2	3	4	5	6	7	8
DAM ENERGY	\$0.19	\$0.08	\$1.22	\$0.07	\$0.68	\$0.00	\$0.00
DAM LOSSES	(\$28.58)	(\$46.51)	(\$42.54)	(\$32.59)	(\$47.47)	\$0.00	\$0.00
BALANCING ENERGY	\$1,327.14	(\$41.87)	\$280.85	\$332.06	\$40.99	\$1.95	(\$2.78)
BALANCING LOSSES	\$99.57	(\$96.16)	\$24.63	\$32.65	\$6.53	\$0.16	(\$22.90)
BALANCING CONGESTION	\$18.91	(\$7.00)	\$22.65	\$44.24	\$10.64	\$0.46	\$96.13
FAILED IMPORT CHARGE	\$0.00	\$0.00	\$0.00	\$0.00	\$0.00	\$0.00	\$0.00
	9	10	11	12	13	14	15
DAM ENERGY	(\$0.02)	\$0.24	\$0.16	(\$0.01)	\$0.58	\$0.05	\$0.00
DAM LOSSES	(\$126.30)	(\$41.23)	(\$28.30)	(\$13.75)	(\$33.92)	(\$20.02)	\$0.00
BALANCING ENERGY	\$39.02	\$174.48	\$3,776.25	\$590.24	(\$247.05)	\$4,268.57	\$85.28
BALANCING LOSSES	\$72.53	\$223.38	\$19.87	\$44.17	(\$14.84)	\$146.17	\$6.25
BALANCING CONGESTION	\$160.10	(\$0.32)	(\$2.31)	\$59.09	(\$95.18)	\$193.97	\$0.39
FAILED IMPORT CHARGE	\$0.00	\$0.00	\$0.00	\$0.00	\$0.00	\$0.00	\$0.00
	16	17	18	19	20	21	22
DAM ENERGY	\$0.75	\$1.36	\$0.19	(\$0.04)	\$0.01	\$0.00	\$0.00
DAM LOSSES	(\$37.71)	(\$27.75)	(\$20.86)	(\$22.02)	(\$2.34)	\$0.00	\$0.00
BALANCING ENERGY	\$156.72	\$24.49	\$106.91	\$441.76	(\$692.14)	\$148.51	\$299.64
BALANCING LOSSES	\$14.67	\$6.67	\$10.60	\$31.52	(\$71.33)	\$9.80	\$21.75
BALANCING CONGESTION	\$10.44	\$7.34	\$23.80	\$89.29	(\$7.13)	\$59.59	\$3.36
FAILED IMPORT CHARGE	\$0.00	\$0.00	\$0.00	\$0.00	\$0.00	\$0.00	\$0.00
	23	24	25	26	27	28	29
DAM ENERGY	\$0.06	\$0.00	(\$0.01)	(\$0.04)	\$0.30	\$1.38	\$0.00
DAM LOSSES	(\$2.95)	\$0.00	(\$5.72)	(\$60.19)	(\$9.59)	(\$39.16)	(\$6.08)
BALANCING ENERGY	\$389.38	\$814.54	\$171.03	\$4,232.86	\$67.34	\$167.03	\$149.17
BALANCING LOSSES	\$7.77	\$51.40	(\$55.07)	\$578.49	(\$10.14)	\$2.81	\$13.55
BALANCING CONGESTION	\$3.41	\$129.20	(\$80.93)	\$5,634.66	(\$1,169.12)	\$128.43	\$289.23
FAILED IMPORT CHARGE	\$0.00	\$0.00	\$0.00	\$0.00	\$0.00	\$0.00	\$0.00
	30						
DAM ENERGY	\$0.68						
DAM LOSSES	(\$19.11)						
BALANCING ENERGY	\$540.81						
BALANCING LOSSES	\$304.48						
BALANCING CONGESTION	\$133.05						
FAILED IMPORT CHARGE	\$0.00						

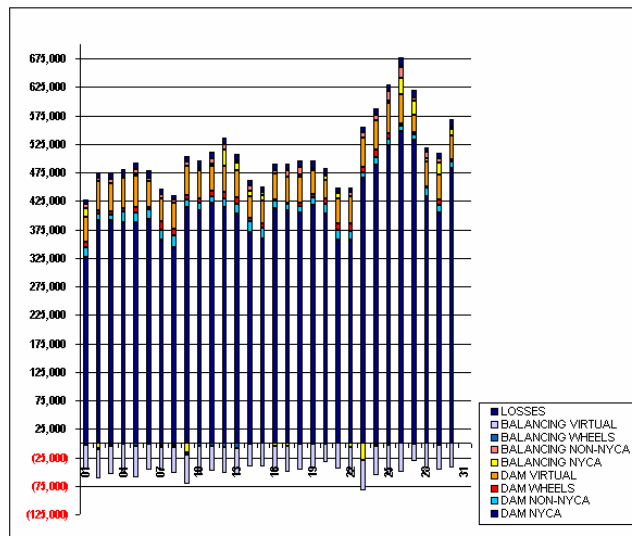


FOR DISCUSSION PURPOSES ONLY

SETTLEMENTS REPORT
JUNE 2003 CLOSEOUT SETTLEMENT
MARCH 6, 2006

4-MONTH SETTLEMENT ADJUSTMENT MARKET WITHDRAWALS ANALYSIS

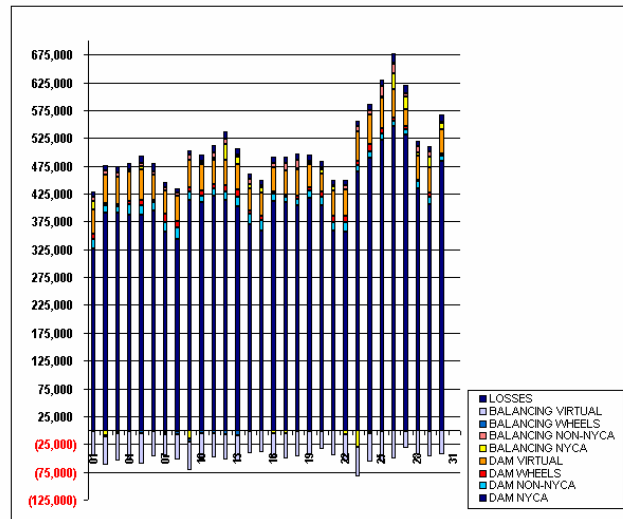
	MONDAY	TUESDAY	WEDNESDAY	THURSDAY	FRIDAY	SATURDAY	SUNDAY
							1
DAM NYCA							326,254
DAM NON-NYCA							17,691
DAM WHEELS							8,700
DAM VIRTUAL							44,817
BALANCING NYCA							14,375
BALANCING NON-NYCA							8,194
BALANCING WHEELS							(2,150)
BALANCING VIRTUAL							(44,817)
UFE/LOSSES							8,385
	2	3	4	5	6	7	8
DAM NYCA	391,223	390,674	387,349	387,245	393,710	357,314	343,638
DAM NON-NYCA	12,484	11,001	18,908	17,723	16,821	17,174	20,190
DAM WHEELS	5,100	5,100	5,500	8,570	3,150	14,026	11,696
DAM VIRTUAL	51,150	48,696	52,968	55,280	46,006	41,517	46,387
BALANCING NYCA	(8,943)	(3,416)	1,106	5,156	(1,807)	(2,804)	(2,342)
BALANCING NON-NYCA	6,426	7,910	1,976	6,950	5,890	6,948	5,641
BALANCING WHEELS	(2,050)	(2,202)	(2,100)	(4,870)	0	(3,928)	(4,496)
BALANCING VIRTUAL	(51,150)	(48,696)	(52,968)	(55,280)	(46,006)	(41,517)	(46,387)
UFE/LOSSES	9,271	10,940	12,287	12,001	13,347	9,124	7,488
	9	10	11	12	13	14	15
DAM NYCA	413,254	409,014	421,224	413,545	403,142	369,677	358,491
DAM NON-NYCA	14,802	12,420	12,569	15,398	16,952	19,727	18,781
DAM WHEELS	7,950	8,500	8,500	11,700	11,700	5,200	8,634
DAM VIRTUAL	50,204	48,099	44,040	45,586	46,790	39,135	40,580
BALANCING NYCA	(15,758)	1,812	4,115	28,085	13,781	8,809	9,189
BALANCING NON-NYCA	8,139	3,773	8,652	9,923	2,956	10,132	5,248
BALANCING WHEELS	(5,150)	(5,771)	(5,000)	(7,179)	(8,550)	(2,043)	0
BALANCING VIRTUAL	(50,204)	(48,099)	(44,040)	(45,586)	(46,790)	(39,135)	(40,580)
UFE/LOSSES	8,968	11,744	12,656	12,625	11,855	8,505	9,424
	16	17	18	19	20	21	22
DAM NYCA	411,398	409,040	404,691	417,133	403,656	357,793	357,158
DAM NON-NYCA	13,849	10,344	11,666	13,853	15,870	15,465	15,785
DAM WHEELS	3,000	3,000	5,000	5,145	9,790	12,321	12,250
DAM VIRTUAL	44,998	45,058	46,900	41,903	32,652	44,807	47,183
BALANCING NYCA	(5,092)	(5,512)	3,117	2,280	7,691	7,775	(6,977)
BALANCING NON-NYCA	6,641	11,899	13,970	3,150	2,054	2,068	8,547
BALANCING WHEELS	0	781	(900)	(1,090)	(1,157)	(14)	(400)
BALANCING VIRTUAL	(44,998)	(45,058)	(46,900)	(41,903)	(32,652)	(44,807)	(47,183)
UFE/LOSSES	11,423	10,295	11,010	12,408	11,173	8,848	7,465
	23	24	25	26	27	28	29
DAM NYCA	464,786	468,585	522,590	546,793	531,746	434,099	405,235
DAM NON-NYCA	10,633	13,126	11,449	9,993	9,179	14,124	13,728
DAM WHEELS	8,500	12,763	9,079	4,582	4,650	1,953	8,598
DAM VIRTUAL	53,083	52,471	53,773	50,956	31,254	43,568	44,687
BALANCING NYCA	(29,066)	(2,180)	3,828	29,417	23,477	5,273	19,328
BALANCING NON-NYCA	8,595	8,288	17,812	17,675	6,075	11,509	8,949
BALANCING WHEELS	(1,107)	(2,596)	(2,352)	1,962	(892)	(101)	(2,441)
BALANCING VIRTUAL	(53,083)	(52,471)	(53,773)	(50,956)	(31,254)	(43,568)	(44,687)
UFE/LOSSES	9,977	11,436	12,116	15,280	13,334	8,604	9,629
	30						
DAM NYCA	483,664						
DAM NON-NYCA	9,688						
DAM WHEELS	3,952						
DAM VIRTUAL	42,655						
BALANCING NYCA	11,950						
BALANCING NON-NYCA	2,557						
BALANCING WHEELS	180						
BALANCING VIRTUAL	(42,655)						
UFE/LOSSES	13,454						



SETTLEMENTS REPORT
JUNE 2003 CLOSEOUT SETTLEMENT
MARCH 6, 2006

12-MONTH CLOSEOUT SETTLEMENT MARKET WITHDRAWALS ANALYSIS

	MONDAY	TUESDAY	WEDNESDAY	THURSDAY	FRIDAY	SATURDAY	SUNDAY
							1
DAM NYCA							326,254
DAM NON-NYCA							17,691
DAM WHEELS							8,700
DAM VIRTUAL							44,817
BALANCING NYCA							14,265
BALANCING NON-NYCA							8,194
BALANCING WHEELS							(2,150)
BALANCING VIRTUAL							(44,817)
UFE/LOSSES							8,415
	2	3	4	5	6	7	8
DAM NYCA	391,223	390,674	387,349	387,245	393,710	357,314	343,638
DAM NON-NYCA	12,484	11,001	18,908	17,723	16,821	17,174	20,190
DAM WHEELS	5,100	5,100	5,500	8,570	3,150	14,026	11,696
DAM VIRTUAL	51,150	40,696	52,968	55,200	46,006	41,517	46,387
BALANCING NYCA	(9,425)	(3,534)	1,015	5,046	(1,758)	(2,936)	(2,460)
BALANCING NON-NYCA	6,426	7,910	1,976	6,950	5,890	6,948	5,641
BALANCING WHEELS	(2,050)	(2,202)	(2,100)	(4,870)	0	(3,820)	(4,496)
BALANCING VIRTUAL	(51,150)	(48,696)	(52,968)	(55,200)	(46,006)	(41,517)	(46,387)
UFE/LOSSES	9,425	11,057	12,387	12,119	13,488	9,257	7,608
	9	10	11	12	13	14	15
DAM NYCA	413,254	409,014	421,224	413,545	403,142	369,677	358,491
DAM NON-NYCA	14,802	12,420	12,569	15,398	16,952	19,727	18,761
DAM WHEELS	7,950	8,500	8,500	11,700	11,700	5,200	8,634
DAM VIRTUAL	50,204	48,099	44,040	45,586	46,790	39,135	40,580
BALANCING NYCA	(15,872)	1,703	3,649	27,968	13,690	8,279	9,060
BALANCING NON-NYCA	8,139	3,773	8,652	9,923	2,956	10,132	5,248
BALANCING WHEELS	(5,150)	(5,771)	(5,000)	(7,179)	(8,550)	(2,043)	0
BALANCING VIRTUAL	(50,204)	(48,099)	(44,040)	(45,586)	(46,790)	(39,135)	(40,580)
UFE/LOSSES	9,085	11,863	12,868	12,755	11,946	8,764	9,557
	16	17	18	19	20	21	22
DAM NYCA	411,398	409,040	404,691	417,133	403,656	357,793	357,158
DAM NON-NYCA	13,849	10,344	11,666	13,853	15,870	15,465	15,785
DAM WHEELS	3,000	3,000	5,000	5,145	9,790	12,321	12,250
DAM VIRTUAL	44,998	45,058	46,900	41,903	32,652	44,807	47,183
BALANCING NYCA	(5,230)	(5,635)	3,012	2,189	7,587	7,649	(7,301)
BALANCING NON-NYCA	6,641	11,899	13,970	3,150	2,054	2,068	8,547
BALANCING WHEELS	0	781	(900)	(1,090)	(1,157)	(14)	(400)
BALANCING VIRTUAL	(44,998)	(45,058)	(46,900)	(41,903)	(32,652)	(44,807)	(47,183)
UFE/LOSSES	11,567	10,418	11,117	12,509	11,265	8,978	7,795
	23	24	25	26	27	28	29
DAM NYCA	464,786	488,585	522,590	546,793	531,746	434,099	405,235
DAM NON-NYCA	10,633	13,126	11,449	9,993	9,179	14,124	13,728
DAM WHEELS	8,500	12,763	9,079	4,582	4,650	1,953	8,598
DAM VIRTUAL	53,083	52,471	53,773	50,956	31,254	43,568	44,687
BALANCING NYCA	(29,471)	(2,399)	3,527	28,729	22,796	5,151	19,211
BALANCING NON-NYCA	8,595	8,288	17,612	17,675	6,075	11,509	8,949
BALANCING WHEELS	(1,107)	(2,596)	(2,352)	1,962	(992)	(101)	(2,441)
BALANCING VIRTUAL	(53,083)	(52,471)	(53,773)	(50,956)	(31,254)	(43,568)	(44,687)
UFE/LOSSES	10,389	11,669	12,421	16,015	14,013	8,730	9,749
	30						
DAM NYCA	483,664						
DAM NON-NYCA	9,688						
DAM WHEELS	3,952						
DAM VIRTUAL	42,655						
BALANCING NYCA	11,867						
BALANCING NON-NYCA	2,557						
BALANCING WHEELS	180						
BALANCING VIRTUAL	(42,655)						
UFE/LOSSES	13,548						

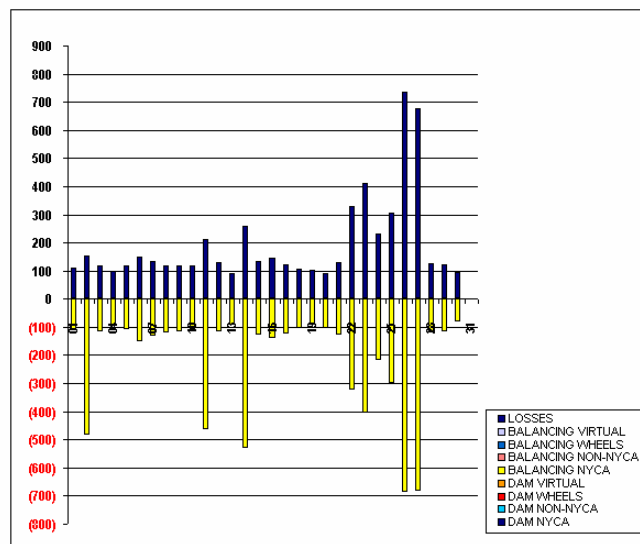


FOR DISCUSSION PURPOSES ONLY

SETTLEMENTS REPORT
JUNE 2003 CLOSEOUT SETTLEMENT
MARCH 6, 2006

CLOSEOUT SETTLEMENT MARKET WITHDRAWALS DELTA ANALYSIS

	MONDAY	TUESDAY	WEDNESDAY	THURSDAY	FRIDAY	SATURDAY	SUNDAY
							1
DAM NYCA							0
DAM NON-NYCA							0
DAM WHEELS							0
DAM VIRTUAL							0
BALANCING NYCA							(110)
BALANCING NON-NYCA							0
BALANCING WHEELS							0
BALANCING VIRTUAL							0
UFE/LOSSES							110
	2	3	4	5	6	7	8
DAM NYCA	0	0	0	0	0	0	0
DAM NON-NYCA	0	0	0	0	0	0	0
DAM WHEELS	0	0	0	0	0	0	0
DAM VIRTUAL	0	0	0	0	0	0	0
BALANCING NYCA	(482)	(118)	(91)	(110)	(151)	(132)	(119)
BALANCING NON-NYCA	0	0	0	0	0	0	0
BALANCING WHEELS	0	0	0	0	0	0	0
BALANCING VIRTUAL	0	0	0	0	0	0	0
UFE/LOSSES	154	117	100	118	151	133	120
	9	10	11	12	13	14	15
DAM NYCA	0	0	0	0	0	0	0
DAM NON-NYCA	0	0	0	0	0	0	0
DAM WHEELS	0	0	0	0	0	0	0
DAM VIRTUAL	0	0	0	0	0	0	0
BALANCING NYCA	(115)	(108)	(465)	(117)	(91)	(530)	(129)
BALANCING NON-NYCA	0	0	0	0	0	0	0
BALANCING WHEELS	0	0	0	0	0	0	0
BALANCING VIRTUAL	0	0	0	0	0	0	0
UFE/LOSSES	117	119	212	130	91	260	133
	16	17	18	19	20	21	22
DAM NYCA	0	0	0	0	0	0	0
DAM NON-NYCA	0	0	0	0	0	0	0
DAM WHEELS	0	0	0	0	0	0	0
DAM VIRTUAL	0	0	0	0	0	0	0
BALANCING NYCA	(138)	(123)	(105)	(92)	(104)	(126)	(324)
BALANCING NON-NYCA	0	0	0	0	0	0	0
BALANCING WHEELS	0	0	0	0	0	0	0
BALANCING VIRTUAL	0	0	0	0	0	0	0
UFE/LOSSES	144	123	107	102	92	130	330
	23	24	25	26	27	28	29
DAM NYCA	0	0	0	0	0	0	0
DAM NON-NYCA	0	0	0	0	0	0	0
DAM WHEELS	0	0	0	0	0	0	0
DAM VIRTUAL	0	0	0	0	0	0	0
BALANCING NYCA	(405)	(219)	(302)	(688)	(681)	(122)	(117)
BALANCING NON-NYCA	0	0	0	0	0	0	0
BALANCING WHEELS	0	0	0	0	0	0	0
BALANCING VIRTUAL	0	0	0	0	0	0	0
UFE/LOSSES	412	233	305	735	679	126	121
	30						
DAM NYCA	0						
DAM NON-NYCA	0						
DAM WHEELS	0						
DAM VIRTUAL	0						
BALANCING NYCA	(83)						
BALANCING NON-NYCA	0						
BALANCING WHEELS	0						
BALANCING VIRTUAL	0						
UFE/LOSSES	83						



FOR DISCUSSION PURPOSES ONLY

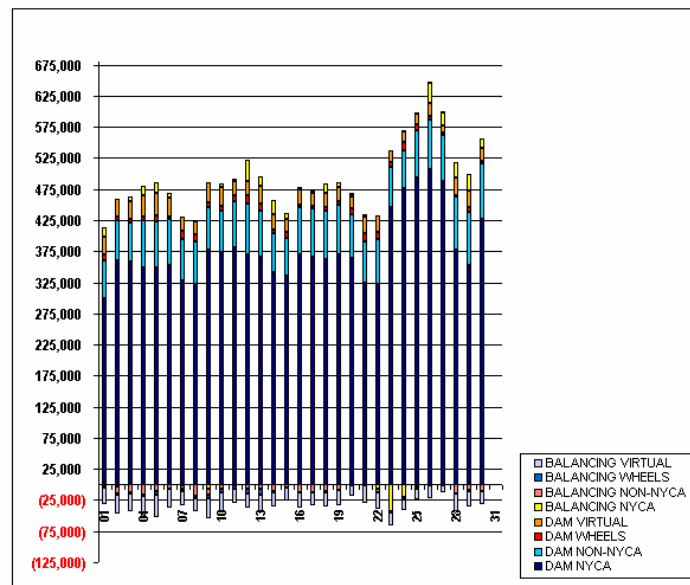
SETTLEMENTS REPORT

JUNE 2003 CLOSEOUT SETTLEMENT

MARCH 6, 2006

4-MONTH SETTLEMENT ADJUSTMENT MARKET SUPPLY ANALYSIS

	MONDAY	TUESDAY	WEDNESDAY	THURSDAY	FRIDAY	SATURDAY	SUNDAY
							1
DAM NYCA							298,827
DAM NON-NYCA							62,212
DAM WHEELS							8,700
DAM VIRTUAL							27,882
BALANCING NYCA							15,793
BALANCING NON-NYCA							(2,013)
BALANCING WHEELS							(2,150)
BALANCING VIRTUAL							(27,882)
	2	3	4	5	6	7	8
DAM NYCA	360,180	359,254	348,385	348,292	353,589	327,743	321,429
DAM NON-NYCA	65,511	62,802	76,430	75,613	73,310	66,353	69,017
DAM WHEELS	5,100	5,100	5,500	8,570	3,150	14,026	11,686
DAM VIRTUAL	29,272	28,351	35,411	36,544	30,285	22,580	20,196
BALANCING NYCA	(4,088)	7,213	13,701	16,935	8,538	(488)	1,979
BALANCING NON-NYCA	(11,142)	(12,160)	(18,889)	(11,765)	(7,476)	(5,842)	(17,809)
BALANCING WHEELS	(2,050)	(2,202)	(2,100)	(4,870)	0	(3,928)	(4,488)
BALANCING VIRTUAL	(29,272)	(28,351)	(35,411)	(36,544)	(30,285)	(22,580)	(20,196)
	9	10	11	12	13	14	15
DAM NYCA	376,897	373,087	381,569	369,362	366,726	340,775	335,547
DAM NON-NYCA	69,301	66,578	74,291	82,989	73,803	63,895	61,037
DAM WHEELS	7,950	8,500	8,500	11,700	11,700	5,200	8,634
DAM VIRTUAL	32,149	30,929	22,691	22,838	27,106	24,028	21,373
BALANCING NYCA	(6,630)	5,309	5,089	35,073	15,886	22,702	9,667
BALANCING NON-NYCA	(10,163)	(6,211)	(1,734)	(7,854)	(7,729)	(10,273)	(5,119)
BALANCING WHEELS	(5,150)	(5,771)	(5,000)	(7,179)	(8,550)	(2,043)	0
BALANCING VIRTUAL	(32,149)	(30,929)	(22,691)	(22,838)	(27,106)	(24,028)	(21,373)
	16	17	18	19	20	21	22
DAM NYCA	369,636	366,332	361,463	370,530	364,388	323,808	322,362
DAM NON-NYCA	76,782	77,993	79,686	79,302	70,465	67,304	71,488
DAM WHEELS	3,000	3,000	5,000	5,145	9,790	12,321	12,250
DAM VIRTUAL	24,500	20,949	22,906	23,404	17,732	27,518	26,853
BALANCING NYCA	4,069	4,400	14,305	7,204	5,274	(1,857)	(7,579)
BALANCING NON-NYCA	(12,268)	(12,659)	(11,160)	(8,262)	317	2,694	(4,293)
BALANCING WHEELS	0	781	(900)	(1,090)	(1,157)	(14)	(400)
BALANCING VIRTUAL	(24,500)	(20,949)	(22,906)	(23,404)	(17,732)	(27,518)	(26,853)
	23	24	25	26	27	28	29
DAM NYCA	446,287	475,977	493,164	507,216	488,537	378,112	351,961
DAM NON-NYCA	63,408	61,298	76,202	79,984	73,469	85,634	86,081
DAM WHEELS	8,500	12,763	9,079	4,502	4,850	1,953	8,598
DAM VIRTUAL	19,288	17,056	18,453	20,709	11,061	28,592	25,853
BALANCING NYCA	(43,752)	(21,023)	2,157	33,133	21,194	24,213	26,839
BALANCING NON-NYCA	(1,017)	3,003	(3,928)	(1,575)	610	(14,349)	(8,012)
BALANCING WHEELS	(1,107)	(2,596)	(2,352)	1,982	(992)	(101)	(2,441)
BALANCING VIRTUAL	(19,288)	(17,056)	(18,453)	(20,709)	(11,061)	(28,592)	(25,853)
	30						
DAM NYCA	427,019						
DAM NON-NYCA	88,779						
DAM WHEELS	3,952						
DAM VIRTUAL	21,397						
BALANCING NYCA	15,588						
BALANCING NON-NYCA	(10,053)						
BALANCING WHEELS	180						
BALANCING VIRTUAL	(21,397)						



FOR DISCUSSION PURPOSES ONLY

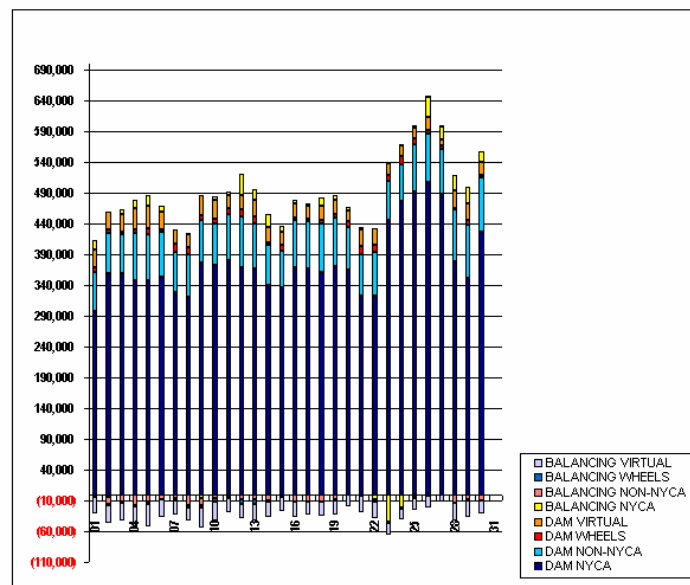
SETTLEMENTS REPORT

JUNE 2003 CLOSEOUT SETTLEMENT

MARCH 6, 2006

12-MONTH CLOSEOUT SETTLEMENT MARKET SUPPLY ANALYSIS

	MONDAY	TUESDAY	WEDNESDAY	THURSDAY	FRIDAY	SATURDAY	SUNDAY
							1
DAM NYCA							298,827
DAM NON-NYCA							62,212
DAM WHEELS							8,700
DAM VIRTUAL							27,882
BALANCING NYCA							15,793
BALANCING NON-NYCA							(2,013)
BALANCING WHEELS							(2,150)
BALANCING VIRTUAL							(27,882)
	2	3	4	5	6	7	8
DAM NYCA	360,180	359,254	348,385	348,292	353,589	327,743	321,429
DAM NON-NYCA	65,511	62,802	76,430	75,613	73,310	66,353	69,017
DAM WHEELS	5,100	5,100	5,500	8,570	3,150	14,026	11,696
DAM VIRTUAL	29,272	28,351	35,411	36,544	30,285	22,580	20,196
BALANCING NYCA	(4,416)	7,213	13,710	16,943	8,538	(498)	1,980
BALANCING NON-NYCA	(11,142)	(12,160)	(16,889)	(11,765)	(7,476)	(5,842)	(17,809)
BALANCING WHEELS	(2,050)	(2,202)	(2,100)	(4,870)	0	(3,928)	(4,496)
BALANCING VIRTUAL	(29,272)	(28,351)	(35,411)	(36,544)	(30,285)	(22,580)	(20,196)
	9	10	11	12	13	14	15
DAM NYCA	376,897	373,087	381,569	369,362	366,726	340,775	335,547
DAM NON-NYCA	69,301	66,578	74,291	82,989	73,803	63,895	61,037
DAM WHEELS	7,950	8,500	8,500	11,700	11,700	5,200	8,634
DAM VIRTUAL	32,149	30,929	22,691	22,838	27,106	24,028	21,373
BALANCING NYCA	(6,628)	5,319	4,836	35,086	15,886	22,432	9,671
BALANCING NON-NYCA	(10,163)	(6,211)	(1,734)	(7,854)	(7,729)	(10,273)	(5,118)
BALANCING WHEELS	(5,150)	(5,771)	(5,000)	(7,179)	(8,550)	(2,043)	0
BALANCING VIRTUAL	(32,149)	(30,929)	(22,691)	(22,838)	(27,106)	(24,028)	(21,373)
	16	17	18	19	20	21	22
DAM NYCA	369,636	366,332	361,463	370,530	364,388	323,808	322,362
DAM NON-NYCA	76,782	77,983	79,686	79,302	70,465	67,304	71,488
DAM WHEELS	3,000	3,000	5,000	5,145	9,790	12,321	12,250
DAM VIRTUAL	24,500	20,949	22,906	23,404	17,732	27,518	26,853
BALANCING NYCA	4,075	4,400	14,307	7,214	5,262	(1,853)	(7,573)
BALANCING NON-NYCA	(12,268)	(12,659)	(11,160)	(8,262)	317	2,694	(4,293)
BALANCING WHEELS	0	781	(900)	(1,090)	(1,157)	(14)	(400)
BALANCING VIRTUAL	(24,500)	(20,949)	(22,906)	(23,404)	(17,732)	(27,518)	(26,853)
	23	24	25	26	27	28	29
DAM NYCA	446,287	475,977	493,164	507,216	488,537	378,112	351,961
DAM NON-NYCA	63,408	61,290	76,202	79,984	73,469	85,634	86,081
DAM WHEELS	8,500	12,763	9,079	4,582	4,650	1,953	8,598
DAM VIRTUAL	19,288	17,056	18,453	20,709	11,061	28,592	25,853
BALANCING NYCA	(43,745)	(21,010)	2,161	33,180	21,192	24,217	26,843
BALANCING NON-NYCA	(1,017)	3,003	(3,928)	(1,575)	610	(14,349)	(8,012)
BALANCING WHEELS	(1,107)	(2,596)	(2,352)	1,982	(992)	(101)	(2,441)
BALANCING VIRTUAL	(19,288)	(17,056)	(18,453)	(20,709)	(11,061)	(28,592)	(25,853)
	30						
DAM NYCA	427,019						
DAM NON-NYCA	88,779						
DAM WHEELS	3,952						
DAM VIRTUAL	21,397						
BALANCING NYCA	15,578						
BALANCING NON-NYCA	(10,053)						
BALANCING WHEELS	180						
BALANCING VIRTUAL	(21,397)						



FOR DISCUSSION PURPOSES ONLY

SETTLEMENTS REPORT

JUNE 2003 CLOSEOUT SETTLEMENT

MARCH 6, 2006

CLOSEOUT SETTLEMENT MARKET SUPPLY DELTA ANALYSIS

	MONDAY	TUESDAY	WEDNESDAY	THURSDAY	FRIDAY	SATURDAY	SUNDAY
							1
DAM NYCA							0
DAM NON-NYCA							0
DAM WHEELS							0
DAM VIRTUAL							0
BALANCING NYCA							0
BALANCING NON-NYCA							0
BALANCING WHEELS							0
BALANCING VIRTUAL							0
	2	3	4	5	6	7	8
DAM NYCA	0	0	0	0	0	0	0
DAM NON-NYCA	0	0	0	0	0	0	0
DAM WHEELS	0	0	0	0	0	0	0
DAM VIRTUAL	0	0	0	0	0	0	0
BALANCING NYCA	(328)	(1)	9	8	0	0	1
BALANCING NON-NYCA	0	0	0	0	0	0	0
BALANCING WHEELS	0	0	0	0	0	0	0
BALANCING VIRTUAL	0	0	0	0	0	0	0
	9	10	11	12	13	14	15
DAM NYCA	0	0	0	0	0	0	0
DAM NON-NYCA	0	0	0	0	0	0	0
DAM WHEELS	0	0	0	0	0	0	0
DAM VIRTUAL	0	0	0	0	0	0	0
BALANCING NYCA	2	11	(253)	13	(1)	(270)	4
BALANCING NON-NYCA	0	0	0	0	0	0	0
BALANCING WHEELS	0	0	0	0	0	0	0
BALANCING VIRTUAL	0	0	0	0	0	0	0
	16	17	18	19	20	21	22
DAM NYCA	0	0	0	0	0	0	0
DAM NON-NYCA	0	0	0	0	0	0	0
DAM WHEELS	0	0	0	0	0	0	0
DAM VIRTUAL	0	0	0	0	0	0	0
BALANCING NYCA	6	0	3	10	(12)	4	6
BALANCING NON-NYCA	0	0	0	0	0	0	0
BALANCING WHEELS	0	0	0	0	0	0	0
BALANCING VIRTUAL	0	0	0	0	0	0	0
	23	24	25	26	27	28	29
DAM NYCA	0	0	0	0	0	0	0
DAM NON-NYCA	0	0	0	0	0	0	0
DAM WHEELS	0	0	0	0	0	0	0
DAM VIRTUAL	0	0	0	0	0	0	0
BALANCING NYCA	7	14	4	47	(2)	4	3
BALANCING NON-NYCA	0	0	0	0	0	0	0
BALANCING WHEELS	0	0	0	0	0	0	0
BALANCING VIRTUAL	0	0	0	0	0	0	0
	30						
DAM NYCA	0						
DAM NON-NYCA	0						
DAM WHEELS	0						
DAM VIRTUAL	0						
BALANCING NYCA	10						
BALANCING NON-NYCA	0						
BALANCING WHEELS	0						
BALANCING VIRTUAL	0						

