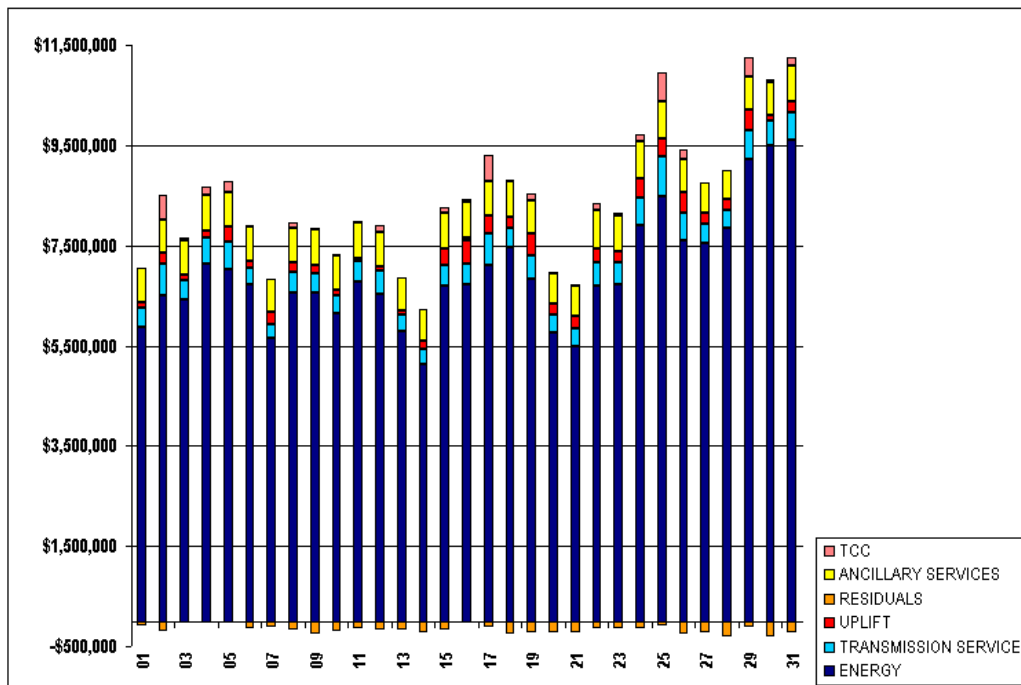


SETTLEMENTS REPORT
ATTACHMENT E: OCTOBER 2001 CLOSEOUT SETTLEMENT
OCTOBER 27, 2005

24-MONTH SETTLEMENT ADJUSTMENT MARKET COSTS

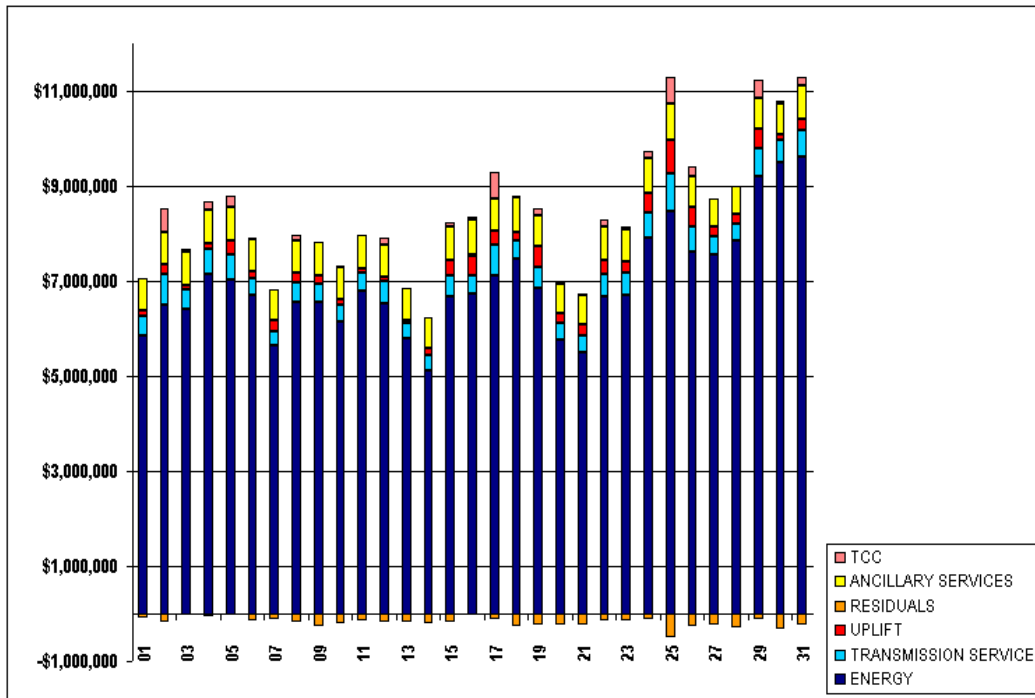
	MONDAY	TUESDAY	WEDNESDAY	THURSDAY	FRIDAY	SATURDAY	SUNDAY
	1	2	3	4	5	6	7
ENERGY	\$5,860,976.25	\$6,503,981.31	\$6,412,820.15	\$7,128,528.46	\$7,032,700.56	\$6,713,235.46	\$5,654,863.86
TRANSMISSION SERVICE	\$383,426.90	\$641,458.81	\$394,612.55	\$538,529.82	\$628,287.44	\$346,332.61	\$276,145.77
UPLIFT	\$117,318.49	\$195,119.52	\$104,069.69	\$122,046.91	\$301,909.96	\$129,627.19	\$234,103.63
RESIDUALS	(\$76,887.55)	(\$184,935.66)	(\$15,006.46)	(\$41,441.55)	(\$5,449.92)	(\$136,402.46)	(\$106,595.50)
ANCILLARY SERVICES	\$692,267.86	\$677,226.02	\$693,829.48	\$711,614.26	\$703,790.43	\$689,801.34	\$663,398.24
TCC	\$9,726.56	\$482,496.04	\$54,405.91	\$181,647.02	\$212,943.62	\$29,146.08	(\$5,805.76)
	8	9	10	11	12	13	14
ENERGY	\$6,555,747.61	\$6,565,421.01	\$6,134,288.08	\$6,788,314.66	\$6,519,488.04	\$5,783,894.88	\$5,130,220.10
TRANSMISSION SERVICE	\$419,840.72	\$386,883.48	\$374,281.14	\$387,585.97	\$484,747.13	\$331,954.02	\$314,390.79
UPLIFT	\$183,799.89	\$159,470.01	\$116,599.94	\$81,200.20	\$71,108.01	\$71,647.85	\$144,220.03
RESIDUALS	(\$183,896.92)	(\$251,842.05)	(\$211,031.38)	(\$135,875.91)	(\$179,533.54)	(\$165,068.63)	(\$219,418.89)
ANCILLARY SERVICES	\$686,751.19	\$708,547.69	\$680,815.24	\$711,663.05	\$682,698.90	\$673,704.77	\$646,192.20
TCC	\$103,229.35	\$18,048.02	\$19,527.64	\$3,001.97	\$143,665.89	\$2,565.37	\$0.00
	15	16	17	18	19	20	21
ENERGY	\$6,681,503.16	\$6,719,261.17	\$7,109,232.35	\$7,461,952.42	\$6,837,626.21	\$5,765,556.16	\$5,490,693.26
TRANSMISSION SERVICE	\$429,778.82	\$406,118.23	\$640,355.27	\$397,402.81	\$462,341.22	\$350,800.24	\$349,015.47
UPLIFT	\$328,550.03	\$475,223.73	\$332,986.74	\$200,404.76	\$442,479.94	\$207,710.06	\$246,980.81
RESIDUALS	(\$178,416.73)	\$42,597.57	(\$121,487.87)	(\$264,467.04)	(\$222,140.87)	(\$230,270.70)	(\$225,029.23)
ANCILLARY SERVICES	\$722,831.14	\$722,181.88	\$688,266.86	\$719,293.67	\$658,883.41	\$615,412.47	\$621,446.92
TCC	\$92,428.65	\$48,178.19	\$545,470.84	\$41,396.45	\$137,450.15	\$34,812.70	\$25,119.12
	22	23	24	25	26	27	28
ENERGY	\$6,684,938.04	\$6,711,945.37	\$7,913,793.10	\$8,469,959.21	\$7,608,969.47	\$7,546,550.45	\$7,843,737.63
TRANSMISSION SERVICE	\$469,279.70	\$457,854.41	\$531,973.18	\$792,823.13	\$628,604.45	\$386,982.31	\$371,163.92
UPLIFT	\$285,938.51	\$221,863.06	\$404,226.56	\$363,470.24	\$434,775.84	\$217,106.65	\$199,104.32
RESIDUALS	(\$148,430.41)	(\$141,579.01)	(\$130,556.00)	(\$82,668.38)	(\$249,544.93)	(\$234,351.27)	(\$299,939.18)
ANCILLARY SERVICES	\$762,077.87	\$700,573.49	\$729,466.19	\$757,679.80	\$655,418.15	\$594,069.49	\$592,691.02
TCC	\$141,769.49	\$55,729.61	\$146,301.47	\$670,530.84	\$198,667.99	(\$265.75)	\$361.42
	29	30	31				
ENERGY	\$9,215,303.94	\$9,500,949.17	\$9,610,951.74				
TRANSMISSION SERVICE	\$581,642.16	\$479,055.35	\$551,851.00				
UPLIFT	\$414,141.61	\$108,070.27	\$221,460.89				
RESIDUALS	(\$124,402.56)	(\$313,446.65)	(\$224,517.81)				
ANCILLARY SERVICES	\$644,883.74	\$662,148.43	\$694,120.31				
TCC	\$390,180.60	\$59,758.93	\$183,636.23				



SETTLEMENTS REPORT
 ATTACHMENT E: OCTOBER 2001 CLOSEOUT SETTLEMENT
 OCTOBER 27, 2005

CLOSEOUT SETTLEMENT MARKET COSTS

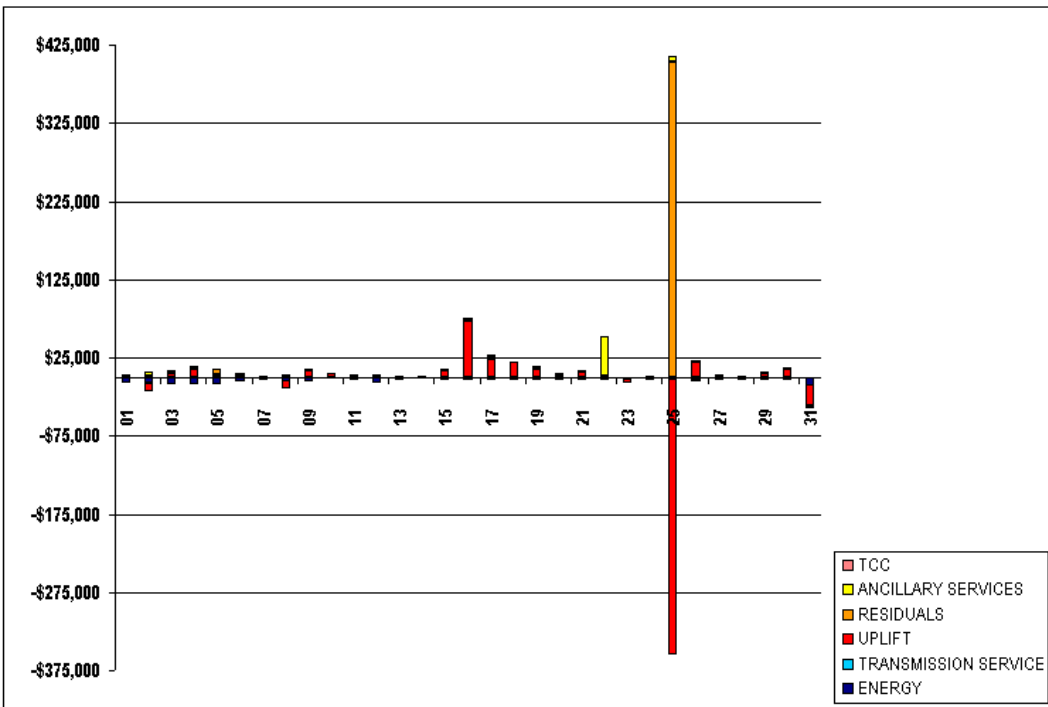
	MONDAY	TUESDAY	WEDNESDAY	THURSDAY	FRIDAY	SATURDAY	SUNDAY
	1	2	3	4	5	6	7
ENERGY	\$5,866,481.73	\$6,510,335.57	\$6,419,924.78	\$7,136,010.81	\$7,039,563.59	\$6,717,228.27	\$5,666,171.72
TRANSMISSION SERVICE	\$383,617.70	\$642,168.74	\$395,443.66	\$538,719.54	\$528,468.58	\$346,478.03	\$276,282.14
UPLIFT	\$119,219.58	\$207,171.11	\$98,935.54	\$112,020.61	\$297,948.17	\$127,835.16	\$234,716.35
RESIDUALS	(\$79,632.94)	(\$187,180.69)	(\$18,554.63)	(\$44,978.92)	(\$11,161.55)	(\$138,858.28)	(\$107,210.35)
ANCILLARY SERVICES	\$691,513.30	\$673,435.58	\$693,348.48	\$711,790.03	\$703,312.77	\$689,280.13	\$663,024.67
TCC	\$9,726.56	\$482,358.10	\$54,234.34	\$181,647.02	\$212,943.62	\$29,146.08	(\$5,805.76)
	8	9	10	11	12	13	14
ENERGY	\$6,560,014.22	\$6,568,692.94	\$6,135,507.71	\$6,789,948.79	\$6,525,821.78	\$5,785,629.47	\$5,131,307.33
TRANSMISSION SERVICE	\$419,594.98	\$387,070.93	\$374,448.68	\$387,740.17	\$484,970.45	\$332,099.09	\$314,531.15
UPLIFT	\$193,580.16	\$149,897.93	\$111,867.51	\$78,198.86	\$70,229.30	\$72,593.65	\$145,665.49
RESIDUALS	(\$186,804.11)	(\$252,837.14)	(\$211,682.15)	(\$136,564.50)	(\$181,578.07)	(\$165,737.61)	(\$220,070.25)
ANCILLARY SERVICES	\$685,846.13	\$707,950.44	\$681,262.56	\$712,048.93	\$683,079.54	\$672,398.67	\$644,634.22
TCC	\$103,195.15	\$18,048.02	\$19,527.64	\$3,001.97	\$143,681.46	\$2,564.80	\$0.00
	15	16	17	18	19	20	21
ENERGY	\$6,682,913.68	\$6,721,266.15	\$7,110,840.29	\$7,463,505.02	\$6,839,188.62	\$5,766,885.17	\$5,492,035.99
TRANSMISSION SERVICE	\$429,929.36	\$406,257.93	\$640,502.89	\$397,555.31	\$462,497.10	\$350,961.95	\$349,145.03
UPLIFT	\$319,527.80	\$403,274.81	\$309,343.87	\$181,593.19	\$432,814.08	\$203,696.52	\$240,314.43
RESIDUALS	(\$178,512.21)	\$42,475.64	(\$122,800.45)	(\$265,950.05)	(\$223,109.57)	(\$231,000.65)	(\$225,701.52)
ANCILLARY SERVICES	\$721,791.55	\$718,989.02	\$683,987.51	\$719,723.31	\$655,660.77	\$615,156.91	\$620,522.71
TCC	\$92,428.65	\$48,230.45	\$545,470.84	\$41,396.45	\$137,307.08	\$34,812.70	\$25,119.12
	22	23	24	25	26	27	28
ENERGY	\$6,686,969.05	\$6,713,820.23	\$7,916,135.44	\$8,472,349.53	\$7,610,671.00	\$7,548,208.63	\$7,846,754.91
TRANSMISSION SERVICE	\$469,434.10	\$458,004.32	\$532,737.25	\$792,990.81	\$528,808.36	\$387,188.31	\$371,331.51
UPLIFT	\$285,216.73	\$227,840.75	\$404,779.43	\$715,106.76	\$414,511.00	\$213,799.73	\$196,798.62
RESIDUALS	(\$149,557.27)	(\$142,125.95)	(\$131,878.52)	(\$486,154.35)	(\$251,298.32)	(\$234,122.45)	(\$299,859.69)
ANCILLARY SERVICES	\$710,986.94	\$700,991.42	\$729,221.79	\$750,335.61	\$658,831.57	\$594,707.19	\$593,248.61
TCC	\$141,769.49	\$55,732.49	\$146,325.08	\$570,642.44	\$198,706.52	(\$265.75)	\$361.42
	29	30	31				
ENERGY	\$9,217,980.20	\$9,502,636.07	\$9,619,557.77				
TRANSMISSION SERVICE	\$581,847.94	\$479,229.60	\$552,124.08				
UPLIFT	\$409,169.11	\$97,554.70	\$249,646.53				
RESIDUALS	(\$125,503.85)	(\$314,377.97)	(\$223,073.78)				
ANCILLARY SERVICES	\$644,736.26	\$662,679.52	\$694,896.26				
TCC	\$390,180.60	\$59,758.93	\$183,636.23				



SETTLEMENTS REPORT
 ATTACHMENT E: OCTOBER 2001 CLOSEOUT SETTLEMENT
 OCTOBER 27, 2005

CLOSEOUT SETTLEMENT MARKET COSTS DELTA

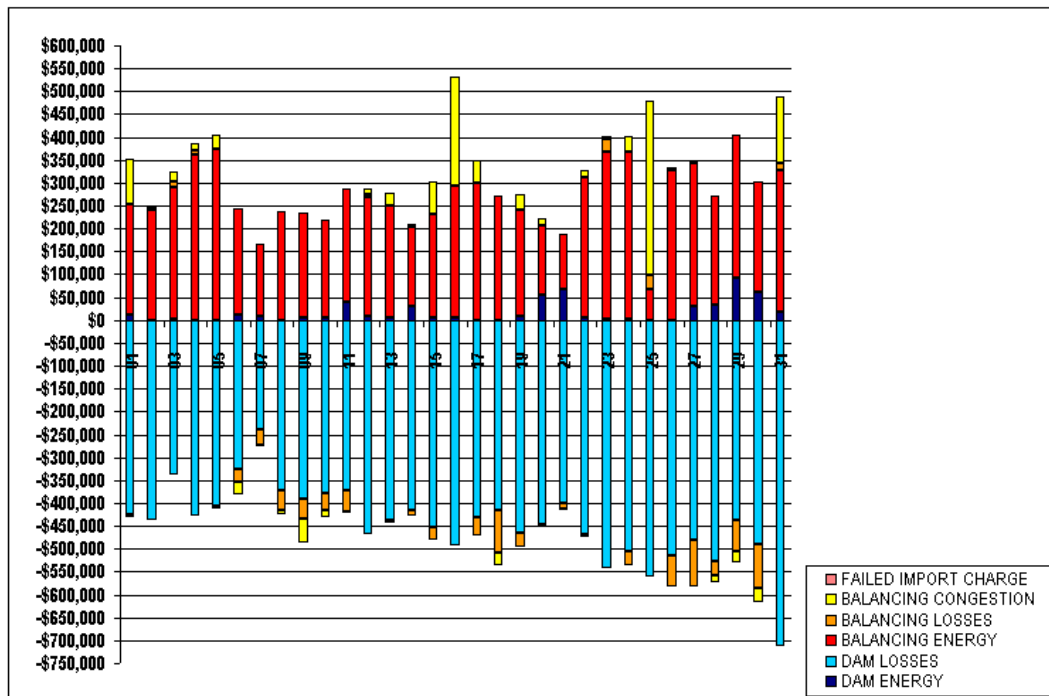
	MONDAY	TUESDAY	WEDNESDAY	THURSDAY	FRIDAY	SATURDAY	SUNDAY
	1	2	3	4	5	6	7
ENERGY	(\$5,505.48)	(\$6,354.26)	(\$7,104.63)	(\$7,482.35)	(\$6,863.03)	(\$3,992.81)	(\$1,307.86)
TRANSMISSION SERVICE	(\$190.80)	(\$709.93)	(\$531.11)	(\$189.72)	(\$181.14)	(\$145.42)	(\$136.37)
UPLIFT	(\$1,901.09)	(\$12,051.59)	\$5,134.15	\$10,026.30	\$3,961.79	\$1,792.03	(\$612.72)
RESIDUALS	\$2,745.39	\$2,245.03	\$3,548.17	\$3,537.37	\$5,711.63	\$2,455.82	\$614.85
ANCILLARY SERVICES	\$754.56	\$3,790.44	\$481.00	(\$175.77)	\$477.66	\$521.21	\$373.57
TCC	\$0.00	\$137.94	\$171.57	\$0.00	\$0.00	\$0.00	\$0.00
	8	9	10	11	12	13	14
ENERGY	(\$4,266.61)	(\$3,271.93)	(\$1,219.63)	(\$1,634.13)	(\$6,333.74)	(\$1,734.59)	(\$1,087.23)
TRANSMISSION SERVICE	\$245.74	(\$187.45)	(\$167.54)	(\$154.20)	(\$223.32)	(\$145.07)	(\$140.36)
UPLIFT	(\$9,780.27)	\$9,572.08	\$4,732.43	\$3,001.34	\$878.71	(\$945.80)	(\$1,445.46)
RESIDUALS	\$2,907.19	\$995.09	\$650.77	\$688.59	\$2,044.53	\$668.98	\$651.36
ANCILLARY SERVICES	\$905.06	\$597.25	(\$447.32)	(\$385.88)	(\$380.64)	\$1,306.10	\$1,557.98
TCC	(\$34.20)	\$0.00	\$0.00	\$0.00	(\$15.57)	\$0.57	\$0.00
	15	16	17	18	19	20	21
ENERGY	(\$1,410.52)	(\$2,004.98)	(\$1,607.94)	(\$1,552.60)	(\$1,562.41)	(\$1,329.01)	(\$1,342.73)
TRANSMISSION SERVICE	(\$150.54)	(\$139.70)	(\$147.62)	(\$152.50)	(\$155.88)	(\$161.71)	(\$129.56)
UPLIFT	\$9,022.23	\$71,948.92	\$23,642.87	\$18,811.57	\$9,665.86	\$4,013.54	\$6,666.38
RESIDUALS	\$96.48	\$121.93	\$1,312.58	\$1,483.01	\$968.70	\$729.95	\$672.29
ANCILLARY SERVICES	\$1,039.59	\$3,192.86	\$4,279.35	(\$429.64)	\$3,222.64	\$255.56	\$924.21
TCC	\$0.00	(\$52.26)	\$0.00	\$0.00	\$143.07	\$0.00	\$0.00
	22	23	24	25	26	27	28
ENERGY	(\$2,031.01)	(\$1,874.86)	(\$2,342.34)	(\$2,390.32)	(\$1,701.53)	(\$1,658.18)	(\$3,017.28)
TRANSMISSION SERVICE	(\$154.40)	(\$149.91)	(\$764.07)	(\$167.63)	(\$203.91)	(\$206.00)	(\$167.59)
UPLIFT	\$721.78	(\$5,977.69)	(\$552.87)	(\$351,636.52)	\$20,264.84	\$3,306.92	\$2,305.70
RESIDUALS	\$1,126.86	\$546.94	\$1,322.52	\$403,485.97	\$1,753.39	(\$228.82)	(\$79.49)
ANCILLARY SERVICES	\$51,090.93	(\$417.93)	\$244.40	\$7,344.19	(\$3,413.42)	(\$637.70)	(\$557.59)
TCC	\$0.00	(\$2.88)	(\$23.61)	(\$111.60)	(\$37.53)	\$0.00	\$0.00
	29	30	31				
ENERGY	(\$2,676.26)	(\$1,686.90)	(\$8,606.03)				
TRANSMISSION SERVICE	(\$205.78)	(\$174.25)	(\$273.08)				
UPLIFT	\$4,972.50	\$10,515.57	(\$23,185.64)				
RESIDUALS	\$1,101.29	\$931.32	(\$1,444.03)				
ANCILLARY SERVICES	\$147.48	(\$531.09)	(\$775.95)				
TCC	\$0.00	\$0.00	\$0.00				



SETTLEMENTS REPORT
 ATTACHMENT E: OCTOBER 2001 CLOSEOUT SETTLEMENT
 OCTOBER 27, 2005

24-MONTH SETTLEMENT ADJUSTMENT MARKET RESIDUALS

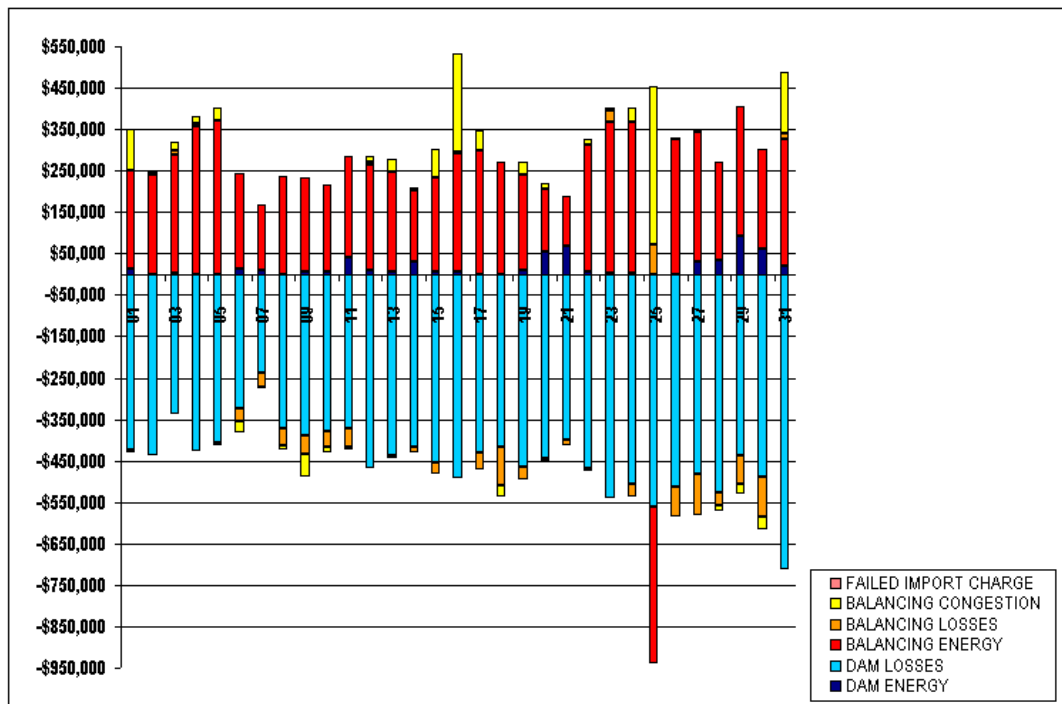
	MONDAY	TUESDAY	WEDNESDAY	THURSDAY	FRIDAY	SATURDAY	SUNDAY
	1	2	3	4	5	6	7
DAM ENERGY	\$11,595.53	(\$1,217.72)	\$2,725.30	(\$792.62)	(\$205.04)	\$12,743.04	\$9,023.10
DAM LOSSES	(\$424,705.96)	(\$435,280.57)	(\$338,997.87)	(\$427,260.90)	(\$404,993.53)	(\$324,779.04)	(\$237,640.88)
BALANCING ENERGY	\$241,326.91	\$242,278.31	\$288,780.53	\$361,676.71	\$374,523.69	\$232,261.02	\$158,131.54
BALANCING LOSSES	(\$6,957.16)	\$4,101.07	\$10,034.99	\$7,672.11	(\$7,458.96)	(\$29,488.49)	(\$34,845.10)
BALANCING CONGESTION	\$99,907.77	\$4,633.71	\$21,933.84	\$16,621.21	\$31,315.80	(\$28,154.02)	(\$2,839.71)
FAILED IMPORT CHARGE	\$0.00	\$0.00	\$0.00	\$0.00	\$0.00	\$0.00	\$0.00
	8	9	10	11	12	13	14
DAM ENERGY	(\$182.53)	\$7,019.88	\$5,488.82	\$39,976.18	\$9,843.08	\$4,870.72	\$31,093.62
DAM LOSSES	(\$371,620.86)	(\$389,634.81)	(\$377,783.66)	(\$372,101.87)	(\$468,128.36)	(\$436,827.75)	(\$415,058.77)
BALANCING ENERGY	\$239,062.11	\$228,044.01	\$212,967.29	\$246,982.69	\$258,079.24	\$244,267.48	\$171,142.71
BALANCING LOSSES	(\$42,866.37)	(\$45,814.42)	(\$37,476.56)	(\$45,452.04)	\$6,899.89	(\$5,918.37)	(\$14,412.84)
BALANCING CONGESTION	(\$9,334.59)	(\$52,774.90)	(\$14,592.35)	(\$5,415.03)	\$13,341.02	\$28,511.07	\$7,732.55
FAILED IMPORT CHARGE	\$0.00	\$0.00	\$0.00	\$0.00	\$0.00	\$0.00	\$0.00
	15	16	17	18	19	20	21
DAM ENERGY	\$6,032.53	\$5,601.34	(\$224.89)	\$12.85	\$8,459.34	\$53,644.39	\$68,057.09
DAM LOSSES	(\$453,389.06)	(\$491,613.62)	(\$431,679.78)	(\$415,468.07)	(\$465,391.25)	(\$445,731.21)	(\$400,910.17)
BALANCING ENERGY	\$226,782.78	\$287,030.03	\$299,957.06	\$272,197.41	\$231,725.71	\$152,431.59	\$121,261.15
BALANCING LOSSES	(\$27,451.10)	\$1,470.00	(\$39,154.19)	(\$93,036.23)	(\$31,239.38)	(\$5,741.71)	(\$11,362.02)
BALANCING CONGESTION	\$68,911.50	\$237,293.99	\$49,247.28	(\$28,554.32)	\$33,473.53	\$15,005.53	(\$2,302.60)
FAILED IMPORT CHARGE	\$0.00	\$0.00	\$0.00	\$0.00	\$0.00	\$0.00	\$0.00
	22	23	24	25	26	27	28
DAM ENERGY	\$7,003.52	\$2,341.12	\$1,885.67	\$787.38	\$122.83	\$28,795.38	\$33,519.35
DAM LOSSES	(\$468,745.60)	(\$541,471.80)	(\$505,635.22)	(\$562,669.88)	(\$514,272.32)	(\$480,517.64)	(\$528,403.59)
BALANCING ENERGY	\$306,245.74	\$365,171.93	\$367,069.61	\$68,132.05	\$325,948.01	\$314,479.96	\$238,334.01
BALANCING LOSSES	(\$6,794.87)	\$28,597.45	(\$29,762.38)	\$29,110.04	(\$69,257.03)	(\$101,629.14)	(\$28,437.78)
BALANCING CONGESTION	\$13,028.55	\$6,820.39	\$33,210.96	\$380,251.63	\$6,747.94	\$4,039.01	(\$15,356.30)
FAILED IMPORT CHARGE	\$0.00	\$0.00	\$0.00	\$0.00	\$0.00	\$0.00	\$0.00
	29	30	31				
DAM ENERGY	\$91,416.31	\$62,311.88	\$18,794.91				
DAM LOSSES	(\$437,413.79)	(\$490,259.83)	(\$713,109.60)				
BALANCING ENERGY	\$314,028.54	\$241,767.30	\$309,443.73				
BALANCING LOSSES	(\$67,185.23)	(\$94,654.26)	\$14,786.19				
BALANCING CONGESTION	(\$26,069.42)	(\$32,784.79)	\$144,499.92				
FAILED IMPORT CHARGE	\$0.00	\$0.00	\$0.00				



SETTLEMENTS REPORT
 ATTACHMENT E: OCTOBER 2001 CLOSEOUT SETTLEMENT
 OCTOBER 27, 2005

CLOSEOUT SETTLEMENT MARKET RESIDUALS ANALYSIS

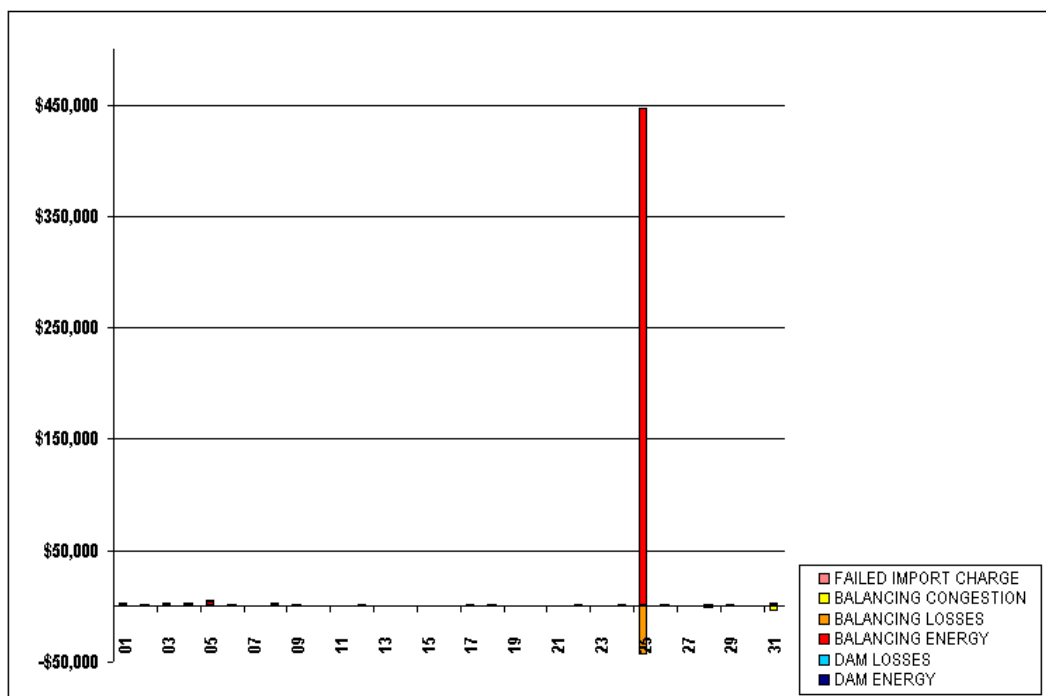
	MONDAY	TUESDAY	WEDNESDAY	THURSDAY	FRIDAY	SATURDAY	SUNDAY
	1	2	3	4	5	6	7
DAM ENERGY	\$11,595.54	(\$1,217.72)	\$2,725.30	(\$792.63)	(\$205.04)	\$12,743.04	\$9,023.10
DAM LOSSES	(\$424,705.97)	(\$435,280.58)	(\$338,997.88)	(\$427,260.90)	(\$404,993.53)	(\$324,779.04)	(\$237,640.88)
BALANCING ENERGY	\$238,845.62	\$240,109.68	\$285,383.12	\$359,296.51	\$369,888.43	\$230,133.53	\$157,549.54
BALANCING LOSSES	(\$7,019.88)	\$4,042.86	\$9,906.75	\$7,528.11	(\$7,889.23)	(\$29,566.94)	(\$34,862.38)
BALANCING CONGESTION	\$99,747.69	\$4,637.13	\$21,919.32	\$16,621.12	\$30,689.70	(\$28,155.08)	(\$2,839.71)
FAILED IMPORT CHARGE	\$0.00	\$0.00	\$0.00	\$0.00	\$0.00	\$0.00	\$0.00
	8	9	10	11	12	13	14
DAM ENERGY	(\$182.53)	\$7,019.88	\$5,488.81	\$39,976.18	\$9,843.08	\$4,870.73	\$31,093.63
DAM LOSSES	(\$371,620.85)	(\$389,684.81)	(\$377,783.67)	(\$372,101.88)	(\$468,128.37)	(\$436,827.78)	(\$415,058.80)
BALANCING ENERGY	\$236,323.79	\$226,423.34	\$212,371.87	\$246,397.49	\$255,896.91	\$243,624.13	\$170,518.56
BALANCING LOSSES	(\$43,015.58)	(\$45,875.70)	(\$37,500.90)	(\$45,547.07)	\$6,813.49	(\$5,941.48)	(\$14,438.06)
BALANCING CONGESTION	(\$9,336.43)	(\$51,875.65)	(\$14,603.26)	(\$5,416.88)	\$13,580.66	\$28,513.28	\$7,732.55
FAILED IMPORT CHARGE	\$0.00	\$0.00	\$0.00	\$0.00	\$0.00	\$0.00	\$0.00
	15	16	17	18	19	20	21
DAM ENERGY	\$6,032.53	\$5,601.34	(\$224.89)	\$12.85	\$8,459.33	\$53,644.39	\$68,057.09
DAM LOSSES	(\$453,389.13)	(\$491,613.65)	(\$431,679.79)	(\$415,468.07)	(\$465,391.27)	(\$445,731.21)	(\$400,910.17)
BALANCING ENERGY	\$226,636.89	\$286,559.35	\$298,712.17	\$271,029.15	\$230,734.24	\$151,764.58	\$120,607.80
BALANCING LOSSES	(\$27,400.24)	\$1,828.98	(\$39,217.21)	(\$93,292.50)	(\$31,171.78)	(\$5,759.83)	(\$11,383.35)
BALANCING CONGESTION	\$68,915.41	\$237,287.75	\$49,248.13	(\$28,606.89)	\$33,467.70	\$15,005.39	(\$2,291.63)
FAILED IMPORT CHARGE	\$0.00	\$0.00	\$0.00	\$0.00	\$0.00	\$0.00	\$0.00
	22	23	24	25	26	27	28
DAM ENERGY	\$7,003.51	\$2,341.12	\$1,885.67	\$787.39	\$122.83	\$28,795.38	\$33,519.35
DAM LOSSES	(\$468,745.62)	(\$541,471.86)	(\$505,635.22)	(\$562,642.59)	(\$514,218.53)	(\$480,517.64)	(\$528,403.59)
BALANCING ENERGY	\$305,281.31	\$364,626.08	\$366,543.33	(\$378,377.74)	\$324,622.13	\$314,770.51	\$236,915.55
BALANCING LOSSES	(\$6,923.66)	\$28,618.27	(\$29,847.19)	\$72,177.79	(\$89,555.73)	(\$101,607.91)	(\$28,355.23)
BALANCING CONGESTION	\$13,028.23	\$6,820.65	\$32,509.81	\$380,210.46	\$6,753.02	\$4,187.54	(\$13,934.26)
FAILED IMPORT CHARGE	\$0.00	\$0.00	\$0.00	\$0.00	\$0.00	\$0.00	\$0.00
	29	30	31				
DAM ENERGY	\$91,416.32	\$62,311.89	\$18,794.91				
DAM LOSSES	(\$437,413.80)	(\$490,259.85)	(\$713,109.62)				
BALANCING ENERGY	\$313,188.02	\$240,899.73	\$306,050.38				
BALANCING LOSSES	(\$67,457.96)	(\$94,701.04)	\$14,701.67				
BALANCING CONGESTION	(\$26,000.48)	(\$32,785.02)	\$149,576.22				
FAILED IMPORT CHARGE	\$0.00	\$0.00	\$0.00				



SETTLEMENTS REPORT
 ATTACHMENT E: OCTOBER 2001 CLOSEOUT SETTLEMENT
 OCTOBER 27, 2005

CLOSEOUT SETTLEMENT MARKET RESIDUALS DELTA ANALYSIS

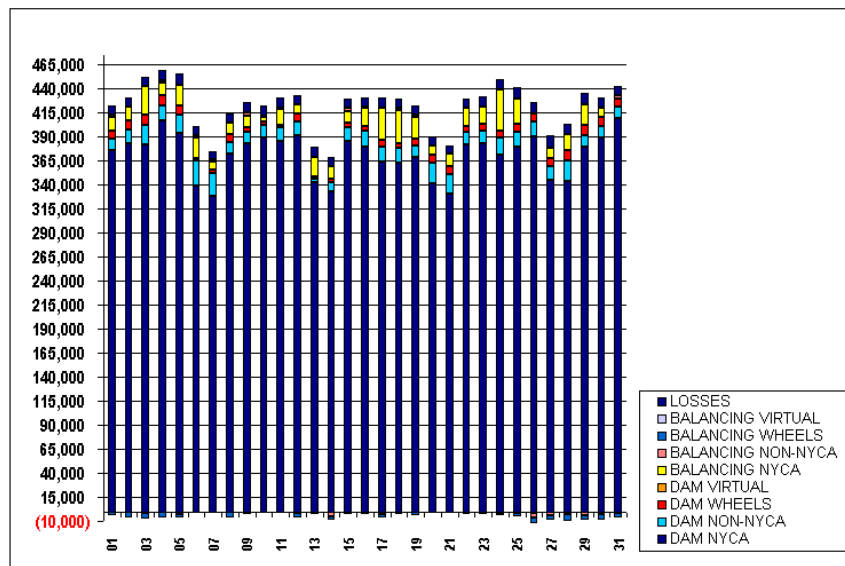
	HONDAY	TUESDAY	WEDNESDAY	THURSDAY	FRIDAY	SATURDAY	SUNDAY
	1	2	3	4	5	6	7
DAM ENERGY	(\$0.01)	\$0.00	\$0.00	\$0.01	\$0.00	\$0.00	\$0.00
DAM LOSSES	\$0.01	\$0.01	\$0.01	\$0.00	\$0.00	\$0.00	\$0.00
BALANCING ENERGY	\$2,481.29	\$2,168.63	\$3,397.41	\$3,380.20	\$4,635.26	\$2,127.49	\$582.00
BALANCING LOSSES	\$62.72	\$58.21	\$128.24	\$144.00	\$430.27	\$78.45	\$17.28
BALANCING CONGESTION	\$160.08	(\$3.42)	\$14.52	\$0.09	\$626.10	\$1.06	\$0.00
FAILED IMPORT CHARGE	\$0.00	\$0.00	\$0.00	\$0.00	\$0.00	\$0.00	\$0.00
	8	9	10	11	12	13	14
DAM ENERGY	\$0.00	\$0.00	\$0.01	\$0.00	\$0.00	(\$0.01)	(\$0.01)
DAM LOSSES	(\$0.01)	\$0.00	\$0.01	\$0.01	\$0.01	\$0.03	\$0.03
BALANCING ENERGY	\$2,738.32	\$1,620.67	\$595.42	\$585.20	\$2,182.33	\$643.35	\$624.15
BALANCING LOSSES	\$149.21	\$61.28	\$24.34	\$95.03	\$86.40	\$23.11	\$25.22
BALANCING CONGESTION	\$1.84	(\$899.25)	\$10.91	\$1.85	(\$239.64)	(\$2.21)	\$0.00
FAILED IMPORT CHARGE	\$0.00	\$0.00	\$0.00	\$0.00	\$0.00	\$0.00	\$0.00
	15	16	17	18	19	20	21
DAM ENERGY	\$0.00	\$0.00	\$0.00	\$0.00	\$0.01	\$0.00	\$0.00
DAM LOSSES	\$0.07	\$0.03	\$0.01	\$0.00	\$0.02	\$0.00	\$0.00
BALANCING ENERGY	\$145.89	\$470.68	\$1,244.89	\$1,168.26	\$991.47	\$667.01	\$653.35
BALANCING LOSSES	(\$50.86)	(\$358.98)	\$63.02	\$256.27	(\$67.60)	\$18.12	\$21.33
BALANCING CONGESTION	(\$3.91)	\$6.24	(\$0.85)	\$52.57	\$5.83	\$0.14	(\$10.97)
FAILED IMPORT CHARGE	\$0.00	\$0.00	\$0.00	\$0.00	\$0.00	\$0.00	\$0.00
	22	23	24	25	26	27	28
DAM ENERGY	\$0.01	\$0.00	\$0.00	(\$0.01)	\$0.00	\$0.00	\$0.00
DAM LOSSES	\$0.02	\$0.06	\$0.00	(\$27.29)	(\$53.79)	\$0.00	\$0.00
BALANCING ENERGY	\$964.43	\$545.85	\$526.28	\$446,509.79	\$1,325.88	(\$290.55)	\$1,418.46
BALANCING LOSSES	\$128.79	(\$20.82)	\$84.81	(\$43,067.75)	\$298.70	(\$21.23)	(\$82.55)
BALANCING CONGESTION	\$0.32	(\$0.26)	\$701.15	\$41.17	(\$5.08)	(\$148.53)	(\$1,422.04)
FAILED IMPORT CHARGE	\$0.00	\$0.00	\$0.00	\$0.00	\$0.00	\$0.00	\$0.00
	29	30	31				
DAM ENERGY	(\$0.01)	(\$0.01)	\$0.00				
DAM LOSSES	\$0.01	\$0.02	\$0.02				
BALANCING ENERGY	\$840.52	\$867.57	\$3,393.35				
BALANCING LOSSES	\$272.73	\$46.78	\$84.52				
BALANCING CONGESTION	(\$68.94)	\$0.23	(\$5,076.30)				
FAILED IMPORT CHARGE	\$0.00	\$0.00	\$0.00				



SETTLEMENTS REPORT
 ATTACHMENT E: OCTOBER 2001 CLOSEOUT SETTLEMENT
 OCTOBER 27, 2005

24-MONTH SETTLEMENT ADJUSTMENT MARKET WITHDRAWALS ANALYSIS

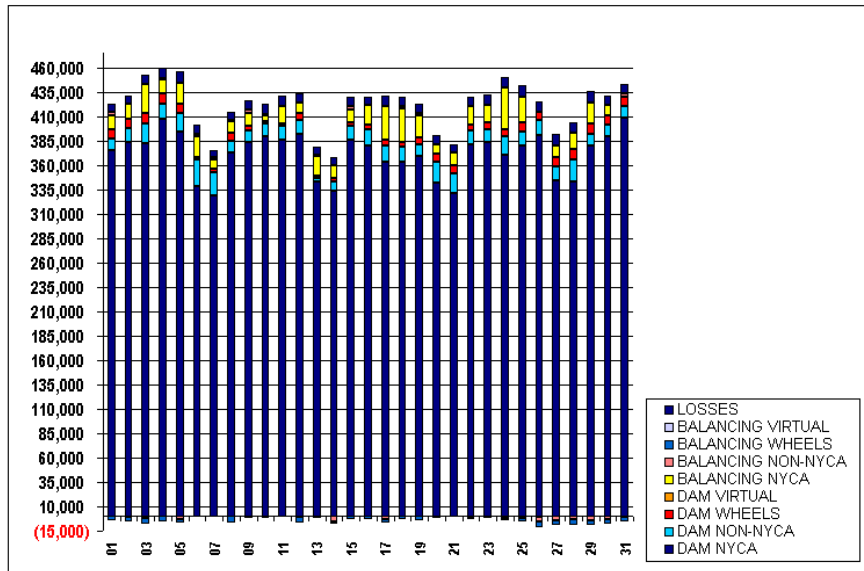
	MONDAY	TUESDAY	WEDNESDAY	THURSDAY	FRIDAY	SATURDAY	SUNDAY
	1	2	3	4	5	6	7
DAM NYCA	375,512	382,985	381,954	406,889	394,056	338,626	328,339
DAM NON-NYCA	11,913	14,781	20,124	15,228	19,102	26,662	23,671
DAM WHEELS	9,200	9,188	11,144	10,998	9,863	2,224	3,524
DAM VIRTUAL	0	0	0	0	0	0	0
BALANCING NYCA	13,723	14,614	29,172	13,875	21,195	21,939	9,127
BALANCING NON-NYCA	3,066	(922)	(2,035)	1,259	(2,736)	1,944	2,466
BALANCING WHEELS	(3,850)	(5,087)	(6,081)	(5,885)	(4,102)	500	(1,100)
BALANCING VIRTUAL	0	0	0	0	0	0	0
LOSSES	9,647	9,141	9,892	11,613	11,986	9,148	8,003
	8	9	10	11	12	13	14
DAM NYCA	372,556	383,557	389,132	385,672	391,810	342,983	333,654
DAM NON-NYCA	11,935	11,724	13,342	13,926	14,433	3,894	9,590
DAM WHEELS	8,163	4,563	2,863	2,663	7,463	2,400	3,400
DAM VIRTUAL	0	0	0	0	0	0	0
BALANCING NYCA	12,201	12,503	4,767	17,099	9,546	19,918	12,453
BALANCING NON-NYCA	170	3,489	1,976	1,035	(1,198)	337	(4,901)
BALANCING WHEELS	(6,200)	(2,299)	(1,600)	(800)	(5,617)	(2,400)	(3,400)
BALANCING VIRTUAL	0	0	0	0	0	0	0
LOSSES	9,089	10,291	10,150	10,000	10,384	9,541	9,382
	15	16	17	18	19	20	21
DAM NYCA	385,530	379,968	363,697	362,881	369,407	341,624	331,268
DAM NON-NYCA	14,630	16,230	15,847	15,391	11,919	21,354	20,385
DAM WHEELS	4,000	4,800	6,700	4,800	6,978	8,225	7,892
DAM VIRTUAL	0	0	0	0	0	0	0
BALANCING NYCA	12,734	19,595	34,221	34,569	21,981	9,083	12,802
BALANCING NON-NYCA	2,906	351	(2,804)	2,545	2,840	856	(318)
BALANCING WHEELS	(2,700)	(3,150)	(4,100)	(3,150)	(4,550)	(2,000)	(932)
BALANCING VIRTUAL	0	0	0	0	0	0	0
LOSSES	9,469	9,373	10,049	9,484	9,000	9,145	8,175
	22	23	24	25	26	27	28
DAM NYCA	381,568	383,474	370,907	380,128	390,802	344,752	343,417
DAM NON-NYCA	13,610	13,460	18,448	14,564	15,095	14,254	21,794
DAM WHEELS	6,216	6,138	7,125	8,975	8,321	8,650	10,850
DAM VIRTUAL	0	0	0	0	0	0	0
BALANCING NYCA	18,253	17,768	42,217	26,082	(1,758)	11,098	16,963
BALANCING NON-NYCA	(215)	(47)	(2,117)	(2,155)	(4,332)	(4,040)	(3,293)
BALANCING WHEELS	(3,200)	(2,372)	(1,625)	(3,107)	(6,221)	(4,550)	(6,200)
BALANCING VIRTUAL	0	0	0	0	0	0	0
LOSSES	9,809	11,075	11,145	11,515	11,543	12,703	10,884
	29	30	31				
DAM NYCA	379,923	389,711	408,963				
DAM NON-NYCA	12,246	11,730	11,876				
DAM WHEELS	10,680	8,954	9,410				
DAM VIRTUAL	0	0	0				
BALANCING NYCA	20,746	10,095	(1,740)				
BALANCING NON-NYCA	(3,773)	(3,363)	2,551				
BALANCING WHEELS	(5,199)	(5,050)	(4,643)				
BALANCING VIRTUAL	0	0	0				
LOSSES	11,841	10,154	10,212				



SETTLEMENTS REPORT
 ATTACHMENT E: OCTOBER 2001 CLOSEOUT SETTLEMENT
 OCTOBER 27, 2005

CLOSEOUT SETTLEMENT MARKET WITHDRAWALS ANALYSIS

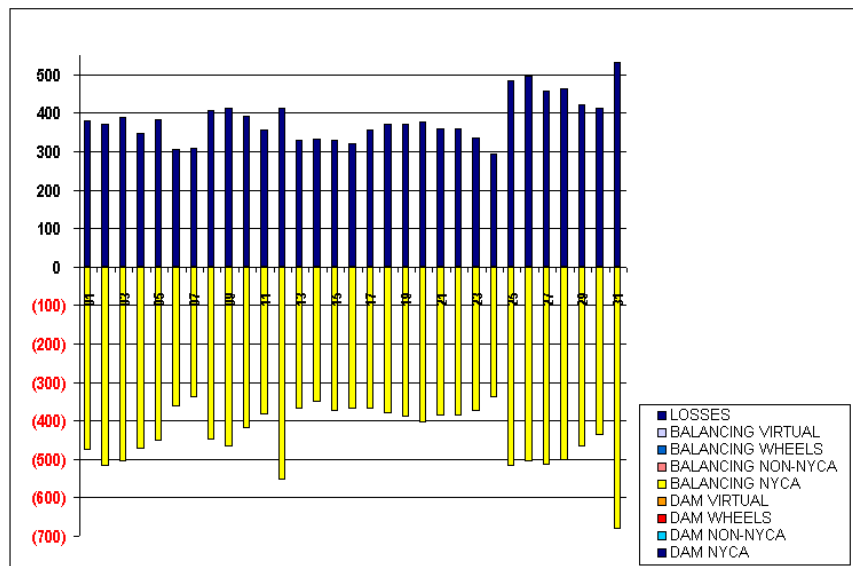
	MONDAY	TUESDAY	WEDNESDAY	THURSDAY	FRIDAY	SATURDAY	SUNDAY
	1	2	3	4	5	6	7
DAM NYCA	375,512	382,985	381,954	406,889	394,056	338,626	328,339
DAM NON-NYCA	11,913	14,781	20,124	15,228	19,102	26,662	23,671
DAM WHEELS	9,200	9,188	11,144	10,898	9,863	2,224	3,524
DAM VIRTUAL	0	0	0	0	0	0	0
BALANCING NYCA	14,200	15,133	29,680	14,350	21,648	22,303	9,468
BALANCING NON-NYCA	3,066	(922)	(2,035)	1,259	(2,736)	1,944	2,466
BALANCING WHEELS	(8,850)	(5,087)	(6,081)	(5,885)	(4,102)	500	(1,100)
BALANCING VIRTUAL	0	0	0	0	0	0	0
LOSSES	9,267	8,770	9,502	11,265	11,604	8,841	7,894
	8	9	10	11	12	13	14
DAM NYCA	372,556	383,557	389,132	385,672	391,810	342,983	333,654
DAM NON-NYCA	11,935	11,724	13,342	13,926	14,433	3,894	9,590
DAM WHEELS	8,163	4,563	2,863	2,663	7,463	2,400	3,400
DAM VIRTUAL	0	0	0	0	0	0	0
BALANCING NYCA	12,651	12,972	5,186	17,484	10,099	20,286	12,804
BALANCING NON-NYCA	170	3,489	1,976	1,035	(1,198)	337	(4,901)
BALANCING WHEELS	(6,300)	(2,299)	(1,600)	(800)	(5,617)	(2,400)	(3,400)
BALANCING VIRTUAL	0	0	0	0	0	0	0
LOSSES	8,682	9,879	9,759	9,643	9,971	9,211	9,049
	15	16	17	18	19	20	21
DAM NYCA	385,530	379,968	363,697	362,881	369,407	341,624	331,268
DAM NON-NYCA	14,630	16,230	15,847	15,391	11,919	21,354	20,385
DAM WHEELS	4,000	4,800	6,700	4,800	6,978	8,225	7,892
DAM VIRTUAL	0	0	0	0	0	0	0
BALANCING NYCA	13,110	19,963	34,590	34,951	22,371	9,487	13,190
BALANCING NON-NYCA	2,906	351	(2,804)	2,545	2,840	856	(318)
BALANCING WHEELS	(2,700)	(3,150)	(4,100)	(3,150)	(4,550)	(2,000)	(932)
BALANCING VIRTUAL	0	0	0	0	0	0	0
LOSSES	9,140	9,062	9,692	9,112	8,630	8,768	7,816
	22	23	24	25	26	27	28
DAM NYCA	381,568	383,474	370,907	380,128	390,802	344,752	343,417
DAM NON-NYCA	13,610	13,460	18,448	14,564	15,095	14,254	21,794
DAM WHEELS	6,216	6,138	7,125	8,975	8,321	8,650	10,850
DAM VIRTUAL	0	0	0	0	0	0	0
BALANCING NYCA	18,640	18,142	42,556	26,599	(1,252)	11,613	17,468
BALANCING NON-NYCA	(215)	(47)	(2,117)	(2,155)	(4,332)	(4,040)	(3,293)
BALANCING WHEELS	(3,200)	(2,372)	(1,625)	(3,107)	(6,221)	(4,550)	(6,200)
BALANCING VIRTUAL	0	0	0	0	0	0	0
LOSSES	9,451	10,740	10,849	11,031	11,047	12,247	10,422
	29	30	31				
DAM NYCA	379,923	389,711	408,963				
DAM NON-NYCA	12,246	11,730	11,876				
DAM WHEELS	10,680	8,954	9,410				
DAM VIRTUAL	0	0	0				
BALANCING NYCA	21,215	10,532	(1,057)				
BALANCING NON-NYCA	(3,773)	(3,363)	2,551				
BALANCING WHEELS	(5,199)	(5,050)	(4,643)				
BALANCING VIRTUAL	0	0	0				
LOSSES	11,418	9,741	9,678				



SETTLEMENTS REPORT
 ATTACHMENT E: OCTOBER 2001 CLOSEOUT SETTLEMENT
 OCTOBER 27, 2005

CLOSEOUT SETTLEMENT MARKET WITHDRAWALS DELTA ANALYSIS

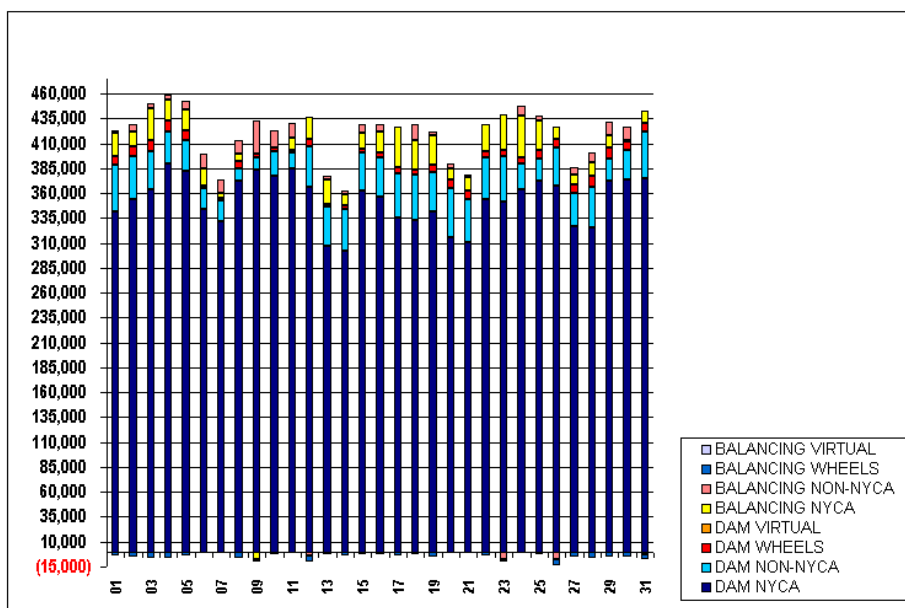
	MONDAY	TUESDAY	WEDNESDAY	THURSDAY	FRIDAY	SATURDAY	SUNDAY
	1	2	3	4	5	6	7
DAM NYCA	0	0	0	0	0	0	0
DAM NON-NYCA	0	0	0	0	0	0	0
DAM WHEELS	0	0	0	0	0	0	0
DAM VIRTUAL	0	0	0	0	0	0	0
BALANCING NYCA	(477)	(518)	(508)	(474)	(453)	(364)	(341)
BALANCING NON-NYCA	0	0	0	0	0	0	0
BALANCING WHEELS	0	0	0	0	0	0	0
BALANCING VIRTUAL	0	0	0	0	0	0	0
LOSSES	379	371	391	348	382	307	309
	8	9	10	11	12	13	14
DAM NYCA	0	0	0	0	0	0	0
DAM NON-NYCA	0	0	0	0	0	0	0
DAM WHEELS	0	0	0	0	0	0	0
DAM VIRTUAL	0	0	0	0	0	0	0
BALANCING NYCA	(451)	(469)	(419)	(385)	(553)	(365)	(351)
BALANCING NON-NYCA	0	0	0	0	0	0	0
BALANCING WHEELS	0	0	0	0	0	0	0
BALANCING VIRTUAL	0	0	0	0	0	0	0
LOSSES	406	412	391	357	413	330	333
	15	16	17	18	19	20	21
DAM NYCA	0	0	0	0	0	0	0
DAM NON-NYCA	0	0	0	0	0	0	0
DAM WHEELS	0	0	0	0	0	0	0
DAM VIRTUAL	0	0	0	0	0	0	0
BALANCING NYCA	(376)	(368)	(369)	(381)	(390)	(404)	(388)
BALANCING NON-NYCA	0	0	0	0	0	0	0
BALANCING WHEELS	0	0	0	0	0	0	0
BALANCING VIRTUAL	0	0	0	0	0	0	0
LOSSES	329	321	358	372	370	378	360
	22	23	24	25	26	27	28
DAM NYCA	0	0	0	0	0	0	0
DAM NON-NYCA	0	0	0	0	0	0	0
DAM WHEELS	0	0	0	0	0	0	0
DAM VIRTUAL	0	0	0	0	0	0	0
BALANCING NYCA	(387)	(375)	(339)	(517)	(506)	(515)	(504)
BALANCING NON-NYCA	0	0	0	0	0	0	0
BALANCING WHEELS	0	0	0	0	0	0	0
BALANCING VIRTUAL	0	0	0	0	0	0	0
LOSSES	358	335	295	484	496	457	463
	29	30	31				
DAM NYCA	0	0	0				
DAM NON-NYCA	0	0	0				
DAM WHEELS	0	0	0				
DAM VIRTUAL	0	0	0				
BALANCING NYCA	(469)	(438)	(683)				
BALANCING NON-NYCA	0	0	0				
BALANCING WHEELS	0	0	0				
BALANCING VIRTUAL	0	0	0				
LOSSES	423	413	534				



SETTLEMENTS REPORT
 ATTACHMENT E: OCTOBER 2001 CLOSEOUT SETTLEMENT
 OCTOBER 27, 2005

24-MONTH SETTLEMENT ADJUSTMENT MARKET SUPPLY ANALYSIS

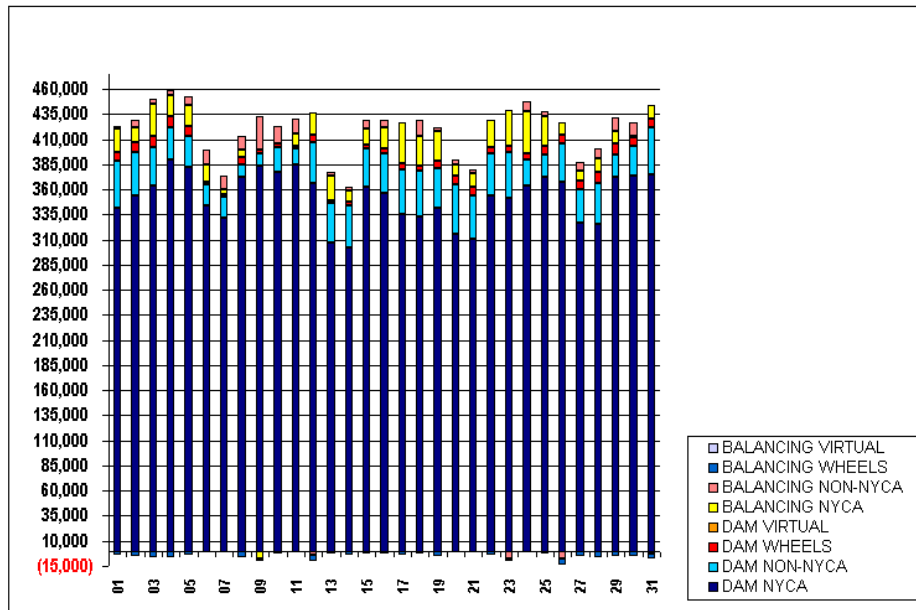
	MONDAY	TUESDAY	WEDNESDAY	THURSDAY	FRIDAY	SATURDAY	SUNDAY
	1	2	3	4	5	6	7
DAM NYCA	341,408	353,947	364,190	390,336	381,950	343,610	332,309
DAM NON-NYCA	46,614	43,851	38,146	31,752	31,201	22,113	20,013
DAM WHEELS	9,200	9,188	11,144	10,998	9,863	2,224	3,524
DAM VIRTUAL	0	0	0	0	0	0	0
BALANCING NYCA	23,642	14,501	32,380	21,128	21,555	16,906	4,198
BALANCING NON-NYCA	1,771	7,601	4,392	4,473	8,597	14,314	13,435
BALANCING WHEELS	(3,850)	(6,087)	(6,081)	(5,885)	(4,102)	500	(1,100)
BALANCING VIRTUAL	0	0	0	0	0	0	0
	8	9	10	11	12	13	14
DAM NYCA	372,056	383,793	376,926	385,413	366,347	307,501	301,824
DAM NON-NYCA	12,428	11,749	25,767	15,617	40,319	39,615	42,654
DAM WHEELS	8,163	4,563	2,863	2,663	7,463	2,400	3,400
DAM VIRTUAL	0	0	0	0	0	0	0
BALANCING NYCA	6,733	(7,494)	(729)	11,654	22,310	24,165	10,773
BALANCING NON-NYCA	14,234	33,116	17,353	14,848	(4,357)	4,042	3,853
BALANCING WHEELS	(6,300)	(2,299)	(1,800)	(800)	(5,617)	(2,400)	(3,400)
BALANCING VIRTUAL	0	0	0	0	0	0	0
	15	16	17	18	19	20	21
DAM NYCA	363,269	356,458	335,099	332,902	341,713	316,183	310,335
DAM NON-NYCA	37,142	40,023	44,436	45,370	39,864	48,768	44,175
DAM WHEELS	4,000	4,800	6,700	4,800	6,978	8,225	7,892
DAM VIRTUAL	0	0	0	0	0	0	0
BALANCING NYCA	16,646	20,106	40,758	30,647	29,792	11,322	13,806
BALANCING NON-NYCA	8,013	8,330	(32)	15,448	3,253	4,789	3,122
BALANCING WHEELS	(2,700)	(3,150)	(4,100)	(3,150)	(4,550)	(2,000)	(932)
BALANCING VIRTUAL	0	0	0	0	0	0	0
	22	23	24	25	26	27	28
DAM NYCA	353,757	351,572	364,063	372,936	368,010	326,315	325,246
DAM NON-NYCA	41,774	45,462	25,353	21,776	37,890	33,456	40,910
DAM WHEELS	6,216	6,138	7,125	8,975	8,321	8,650	10,850
DAM VIRTUAL	0	0	0	0	0	0	0
BALANCING NYCA	27,892	36,270	41,362	29,418	12,203	10,330	14,161
BALANCING NON-NYCA	(598)	(7,674)	9,547	5,404	(7,104)	7,980	3,244
BALANCING WHEELS	(3,200)	(2,372)	(1,625)	(3,107)	(6,221)	(4,550)	(6,200)
BALANCING VIRTUAL	0	0	0	0	0	0	0
	29	30	31				
DAM NYCA	372,828	374,148	375,039				
DAM NON-NYCA	21,830	28,826	46,315				
DAM WHEELS	10,680	8,954	9,410				
DAM VIRTUAL	0	0	0				
BALANCING NYCA	13,031	1,659	12,726				
BALANCING NON-NYCA	12,989	13,514	(2,568)				
BALANCING WHEELS	(5,199)	(6,050)	(4,643)				
BALANCING VIRTUAL	0	0	0				



SETTLEMENTS REPORT
 ATTACHMENT E: OCTOBER 2001 CLOSEOUT SETTLEMENT
 OCTOBER 27, 2005

CLOSEOUT SETTLEMENT MARKET SUPPLY ANALYSIS

	MONDAY	TUESDAY	WEDNESDAY	THURSDAY	FRIDAY	SATURDAY	SUNDAY
	1	2	3	4	5	6	7
DAM NYCA	341,408	353,947	364,190	390,336	381,950	343,610	332,309
DAM NON-NYCA	46,614	43,851	38,146	31,752	31,201	22,113	20,013
DAM WHEELS	9,200	9,188	11,144	10,998	9,863	2,224	3,524
DAM VIRTUAL	0	0	0	0	0	0	0
BALANCING NYCA	23,740	14,649	32,497	21,254	21,626	16,963	4,231
BALANCING NON-NYCA	1,771	7,601	4,392	4,473	8,597	14,314	13,435
BALANCING WHEELS	(3,850)	(5,087)	(6,081)	(5,885)	(4,102)	500	(1,100)
BALANCING VIRTUAL	0	0	0	0	0	0	0
	8	9	10	11	12	13	14
DAM NYCA	372,056	383,793	376,926	385,413	366,347	307,501	301,824
DAM NON-NYCA	12,428	11,749	25,767	15,617	40,319	39,615	42,654
DAM WHEELS	8,163	4,563	2,863	2,663	7,463	2,400	3,400
DAM VIRTUAL	0	0	0	0	0	0	0
BALANCING NYCA	6,777	(7,438)	(702)	11,682	22,451	24,203	10,790
BALANCING NON-NYCA	14,234	33,116	17,353	14,848	(4,357)	4,042	3,853
BALANCING WHEELS	(6,200)	(2,299)	(1,600)	(800)	(5,617)	(2,400)	(3,400)
BALANCING VIRTUAL	0	0	0	0	0	0	0
	15	16	17	18	19	20	21
DAM NYCA	363,269	356,458	335,099	332,902	341,713	316,183	310,335
DAM NON-NYCA	37,142	40,023	44,436	45,370	39,864	48,768	44,175
DAM WHEELS	4,000	4,800	6,700	4,800	6,978	8,225	7,892
DAM VIRTUAL	0	0	0	0	0	0	0
BALANCING NYCA	16,693	20,153	40,769	30,657	29,812	11,349	13,834
BALANCING NON-NYCA	8,013	8,330	(82)	15,448	3,253	4,789	3,122
BALANCING WHEELS	(2,700)	(3,150)	(4,100)	(3,150)	(4,550)	(2,000)	(932)
BALANCING VIRTUAL	0	0	0	0	0	0	0
	22	23	24	25	26	27	28
DAM NYCA	353,757	351,572	364,063	372,936	368,010	326,315	325,246
DAM NON-NYCA	41,774	45,462	25,353	21,776	37,890	33,456	40,910
DAM WHEELS	6,216	6,138	7,125	8,975	8,321	8,650	10,850
DAM VIRTUAL	0	0	0	0	0	0	0
BALANCING NYCA	27,920	36,309	41,405	29,452	12,213	10,388	14,202
BALANCING NON-NYCA	(598)	(7,674)	9,547	5,404	(7,104)	7,980	9,244
BALANCING WHEELS	(3,200)	(2,372)	(1,625)	(3,107)	(6,221)	(4,550)	(6,200)
BALANCING VIRTUAL	0	0	0	0	0	0	0
	29	30	31				
DAM NYCA	372,828	374,148	375,039				
DAM NON-NYCA	21,830	28,826	46,315				
DAM WHEELS	10,680	8,954	9,410				
DAM VIRTUAL	0	0	0				
BALANCING NYCA	13,077	1,684	12,875				
BALANCING NON-NYCA	12,989	13,514	(2,568)				
BALANCING WHEELS	(5,199)	(5,050)	(4,643)				
BALANCING VIRTUAL	0	0	0				



SETTLEMENTS REPORT
 ATTACHMENT E: OCTOBER 2001 CLOSEOUT SETTLEMENT
 OCTOBER 27, 2005

CLOSEOUT SETTLEMENT MARKET SUPPLY DELTA ANALYSIS

	MONDAY	TUESDAY	WEDNESDAY	THURSDAY	FRIDAY	SATURDAY	SUNDAY
	1	2	3	4	5	6	7
DAM NYCA	0	0	0	0	0	0	0
DAM NON-NYCA	0	0	0	0	0	0	0
DAM WHEELS	0	0	0	0	0	0	0
DAM VIRTUAL	0	0	0	0	0	0	0
BALANCING NYCA	(98)	(148)	(117)	(126)	(71)	(67)	(32)
BALANCING NON-NYCA	0	0	0	0	0	0	0
BALANCING WHEELS	0	0	0	0	0	0	0
BALANCING VIRTUAL	0	0	0	0	0	0	0
	8	9	10	11	12	13	14
DAM NYCA	0	0	0	0	0	0	0
DAM NON-NYCA	0	0	0	0	0	0	0
DAM WHEELS	0	0	0	0	0	0	0
DAM VIRTUAL	0	0	0	0	0	0	0
BALANCING NYCA	(44)	(56)	(28)	(23)	(140)	(38)	(17)
BALANCING NON-NYCA	0	0	0	0	0	0	0
BALANCING WHEELS	0	0	0	0	0	0	0
BALANCING VIRTUAL	0	0	0	0	0	0	0
	15	16	17	18	19	20	21
DAM NYCA	0	0	0	0	0	0	0
DAM NON-NYCA	0	0	0	0	0	0	0
DAM WHEELS	0	0	0	0	0	0	0
DAM VIRTUAL	0	0	0	0	0	0	0
BALANCING NYCA	(48)	(47)	(11)	(9)	(20)	(27)	(28)
BALANCING NON-NYCA	0	0	0	0	0	0	0
BALANCING WHEELS	0	0	0	0	0	0	0
BALANCING VIRTUAL	0	0	0	0	0	0	0
	22	23	24	25	26	27	28
DAM NYCA	0	0	0	0	0	0	0
DAM NON-NYCA	0	0	0	0	0	0	0
DAM WHEELS	0	0	0	0	0	0	0
DAM VIRTUAL	0	0	0	0	0	0	0
BALANCING NYCA	(28)	(40)	(44)	(34)	(10)	(68)	(42)
BALANCING NON-NYCA	0	0	0	0	0	0	0
BALANCING WHEELS	0	0	0	0	0	0	0
BALANCING VIRTUAL	0	0	0	0	0	0	0
	29	30	31				
DAM NYCA	0	0	0				
DAM NON-NYCA	0	0	0				
DAM WHEELS	0	0	0				
DAM VIRTUAL	0	0	0				
BALANCING NYCA	(45)	(25)	(149)				
BALANCING NON-NYCA	0	0	0				
BALANCING WHEELS	0	0	0				
BALANCING VIRTUAL	0	0	0				

