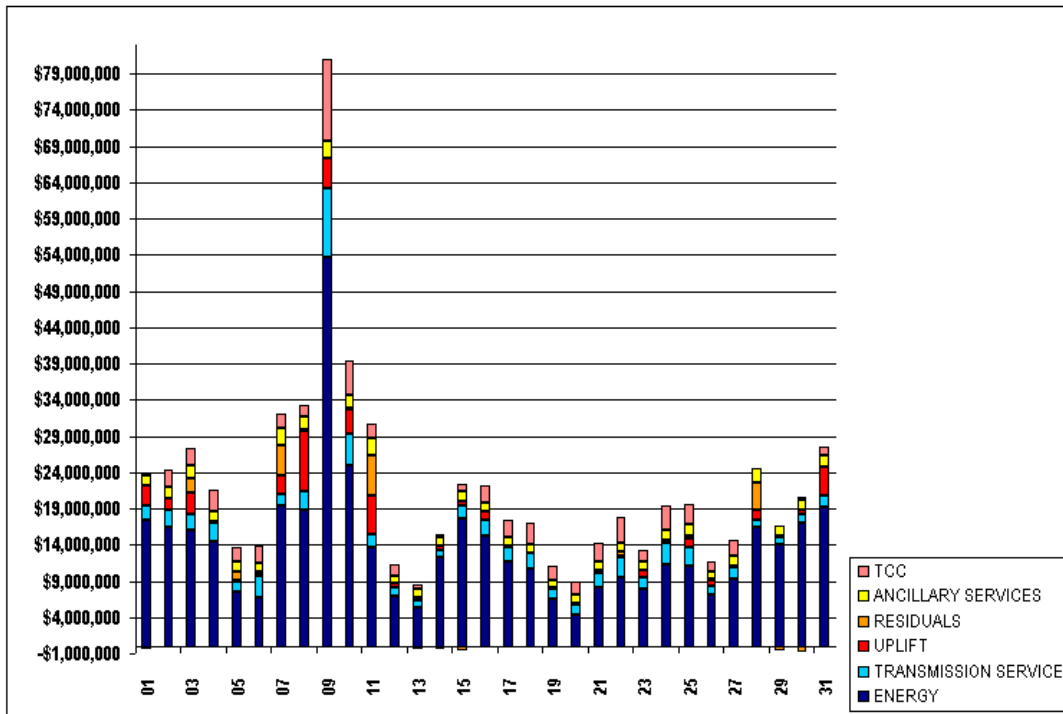


SETTLEMENTS REPORT
ATTACHMENT D: AUGUST 2000 CLOSEOUT SETTLEMENT
OCTOBER 27, 2005

24-MONTH SETTLEMENT ADJUSTMENT MARKET COSTS

	MONDAY	TUESDAY	WEDNESDAY	THURSDAY	FRIDAY	SATURDAY	SUNDAY
		1	2	3	4	5	6
ENERGY		\$17,390,837.39	\$16,373,618.41	\$16,045,533.48	\$14,401,415.46	\$7,477,623.57	\$6,788,071.14
TRANSMISSION SERVICE		\$1,937,314.24	\$2,468,997.03	\$2,200,835.11	\$2,623,899.06	\$1,384,665.51	\$2,892,784.48
UPLIFT		\$2,795,813.82	\$1,569,197.08	\$2,954,768.47	\$290,832.63	\$321,138.23	\$278,430.81
RESIDUALS		(\$408,860.27)	(\$61,704.18)	\$1,966,445.48	(\$197,198.86)	\$1,137,167.13	\$396,877.73
ANCILLARY SERVICES		\$1,382,910.32	\$1,511,869.25	\$1,833,785.79	\$1,334,584.30	\$1,333,911.57	\$1,094,264.64
TCC		\$453,546.14	\$2,352,085.04	\$2,343,140.58	\$2,950,010.11	\$2,057,910.63	\$2,490,686.85
	7	8	9	10	11	12	13
ENERGY	\$19,480,673.72	\$18,868,586.67	\$53,613,609.99	\$24,965,813.77	\$13,675,817.31	\$6,868,392.18	\$5,328,438.15
TRANSMISSION SERVICE	\$1,412,404.66	\$2,531,814.16	\$9,512,185.27	\$4,373,768.81	\$1,814,981.43	\$1,273,043.01	\$909,300.33
UPLIFT	\$2,709,272.76	\$8,389,275.72	\$4,271,810.25	\$3,395,412.38	\$5,232,292.02	\$496,425.42	\$459,458.98
RESIDUALS	\$4,104,418.28	\$173,571.50	(\$75,978.45)	\$144,261.48	\$5,551,680.20	\$19,159.33	(\$344,359.48)
ANCILLARY SERVICES	\$2,333,419.10	\$1,748,423.63	\$2,259,605.09	\$1,701,260.90	\$2,423,941.39	\$1,096,180.17	\$1,120,868.95
TCC	\$2,036,384.61	\$1,680,628.50	\$11,353,333.69	\$4,844,294.29	\$2,037,413.31	\$1,487,100.92	\$763,037.84
	14	15	16	17	18	19	20
ENERGY	\$12,211,684.29	\$17,644,626.36	\$15,240,440.46	\$11,778,066.17	\$10,689,208.67	\$6,483,651.22	\$4,350,607.41
TRANSMISSION SERVICE	\$1,101,269.04	\$1,767,747.00	\$2,194,270.73	\$1,944,994.51	\$2,083,932.42	\$1,335,801.91	\$1,298,316.28
UPLIFT	\$460,719.94	\$555,158.06	\$1,091,856.34	\$166,586.43	\$147,712.76	\$214,671.10	\$341,219.06
RESIDUALS	(\$472,820.74)	(\$690,614.68)	(\$152,061.99)	(\$304,178.35)	(\$32,008.23)	(\$31,684.34)	\$34,146.70
ANCILLARY SERVICES	\$1,238,697.38	\$1,334,179.11	\$1,323,376.43	\$1,239,626.16	\$1,234,463.66	\$1,121,074.22	\$1,062,966.65
TCC	\$361,839.42	\$987,935.45	\$2,230,803.11	\$2,391,733.94	\$2,793,557.67	\$1,935,661.38	\$1,747,060.46
	21	22	23	24	25	26	27
ENERGY	\$8,204,449.77	\$9,449,309.09	\$7,892,840.70	\$11,353,135.08	\$11,144,140.17	\$7,151,111.34	\$9,277,490.21
TRANSMISSION SERVICE	\$1,965,531.11	\$2,882,828.34	\$1,585,046.62	\$2,388,618.64	\$2,451,293.65	\$1,081,728.54	\$1,639,394.92
UPLIFT	\$87,419.94	\$206,090.59	\$325,708.48	\$202,309.38	\$1,219,348.02	\$821,688.12	\$248,622.43
RESIDUALS	\$283,536.32	\$526,586.44	(\$73,999.07)	\$299,779.52	\$360,900.79	\$220,229.27	(\$35,557.16)
ANCILLARY SERVICES	\$1,202,325.05	\$1,265,644.56	\$1,192,637.85	\$1,356,594.87	\$1,601,419.14	\$1,109,830.37	\$1,233,288.22
TCC	\$2,531,222.31	\$3,421,624.44	\$1,701,058.64	\$3,399,562.85	\$2,807,772.07	\$1,390,643.89	\$2,259,884.75
	28	29	30	31			
ENERGY	\$16,474,383.53	\$14,114,683.81	\$17,082,495.02	\$19,242,217.77			
TRANSMISSION SERVICE	\$929,727.76	\$935,142.86	\$1,145,553.73	\$1,608,033.38			
UPLIFT	\$1,389,015.60	\$226,418.39	\$613,613.28	\$3,835,666.95			
RESIDUALS	\$3,781,995.39	(\$518,855.76)	(\$727,473.07)	\$68,722.83			
ANCILLARY SERVICES	\$1,995,384.94	\$1,333,853.26	\$1,398,233.20	\$1,637,388.54			
TCC	(\$100,983.52)	(\$45,836.35)	\$298,383.20	\$1,171,178.91			

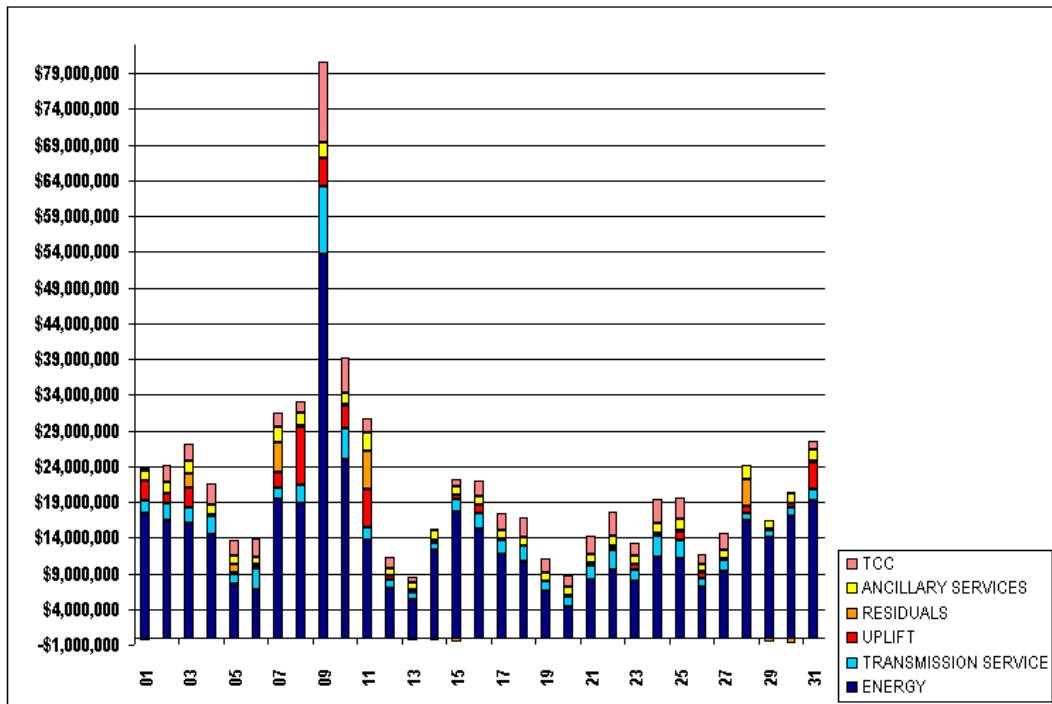


FOR DISCUSSION PURPOSES ONLY

SETTLEMENTS REPORT
ATTACHMENT D: AUGUST 2000 CLOSEOUT SETTLEMENT
OCTOBER 27, 2005

CLOSEOUT SETTLEMENT MARKET COSTS

	MONDAY	TUESDAY	WEDNESDAY	THURSDAY	FRIDAY	SATURDAY	SUNDAY
		1	2	3	4	5	6
ENERGY		\$17,391,290.51	\$16,373,967.90	\$16,046,850.21	\$14,402,163.08	\$7,477,989.42	\$6,788,281.79
TRANSMISSION SERVICE		\$1,880,190.99	\$2,466,269.32	\$2,189,031.89	\$2,623,924.74	\$1,384,876.51	\$2,896,126.22
UPLIFT		\$2,665,916.34	\$1,420,142.22	\$2,837,183.00	\$268,319.92	\$217,540.23	\$233,939.83
RESIDUALS		(\$369,870.31)	(\$78,118.15)	\$1,945,031.93	(\$209,137.26)	\$1,129,651.81	\$396,339.60
ANCILLARY SERVICES		\$1,370,356.86	\$1,455,468.16	\$1,776,779.36	\$1,322,025.52	\$1,303,437.93	\$1,067,374.96
TCC		\$452,734.13	\$2,346,747.97	\$2,341,611.26	\$2,948,866.23	\$2,052,257.03	\$2,488,502.74
	7	8	9	10	11	12	13
ENERGY	\$19,482,391.98	\$18,869,738.84	\$53,617,608.94	\$24,956,872.32	\$13,676,622.68	\$6,871,300.81	\$5,328,509.38
TRANSMISSION SERVICE	\$1,412,095.15	\$2,507,840.22	\$9,509,071.65	\$4,352,448.50	\$1,811,763.41	\$1,271,842.22	\$907,734.33
UPLIFT	\$2,314,278.32	\$8,229,234.47	\$4,050,797.12	\$3,245,711.58	\$5,229,061.94	\$487,649.18	\$459,657.13
RESIDUALS	\$4,049,512.94	\$151,620.27	(\$112,317.94)	\$132,356.48	\$5,481,311.31	\$13,426.50	(\$344,000.37)
ANCILLARY SERVICES	\$2,165,030.48	\$1,652,667.14	\$2,122,506.65	\$1,643,842.22	\$2,525,600.69	\$1,091,352.58	\$1,113,862.29
TCC	\$2,041,124.28	\$1,682,164.35	\$11,335,745.01	\$4,840,124.25	\$2,038,522.10	\$1,483,032.44	\$761,169.33
	14	15	16	17	18	19	20
ENERGY	\$12,212,034.39	\$17,644,348.62	\$15,240,074.81	\$11,777,645.33	\$10,688,640.02	\$6,482,901.11	\$4,349,971.49
TRANSMISSION SERVICE	\$1,100,997.41	\$1,767,225.75	\$2,192,049.82	\$1,942,751.47	\$2,083,022.08	\$1,333,902.46	\$1,296,012.48
UPLIFT	\$435,151.76	\$542,593.54	\$1,086,199.93	\$130,787.47	\$123,799.64	\$194,712.19	\$304,340.93
RESIDUALS	(\$477,745.73)	(\$695,337.99)	(\$159,639.50)	(\$306,418.82)	(\$33,615.38)	(\$35,792.09)	\$29,778.58
ANCILLARY SERVICES	\$1,229,357.51	\$1,327,187.96	\$1,316,218.65	\$1,216,979.96	\$1,216,024.05	\$1,096,059.46	\$1,051,321.42
TCC	\$362,416.31	\$991,148.52	\$2,228,483.84	\$2,389,053.49	\$2,789,547.31	\$1,927,166.37	\$1,741,447.28
	21	22	23	24	25	26	27
ENERGY	\$8,203,588.62	\$9,448,769.03	\$7,892,724.16	\$11,353,314.07	\$11,143,214.07	\$7,150,587.25	\$9,276,677.26
TRANSMISSION SERVICE	\$1,964,739.95	\$2,878,252.57	\$1,583,780.85	\$2,886,753.48	\$2,450,683.16	\$1,080,660.70	\$1,633,722.13
UPLIFT	\$72,652.96	\$86,968.44	\$909,892.70	\$128,839.60	\$1,173,124.88	\$806,747.22	\$207,770.24
RESIDUALS	\$280,656.60	\$516,370.42	(\$79,031.77)	\$292,884.62	\$374,434.79	\$217,288.08	(\$39,285.61)
ANCILLARY SERVICES	\$1,192,994.28	\$1,246,821.84	\$1,189,114.05	\$1,345,536.84	\$1,577,455.38	\$1,102,992.41	\$1,190,498.73
TCC	\$2,525,867.33	\$3,414,562.04	\$1,696,343.98	\$3,392,876.63	\$2,796,040.41	\$1,387,264.83	\$2,251,310.90
	28	29	30	31			
ENERGY	\$16,473,795.41	\$14,114,117.19	\$17,081,218.42	\$19,242,074.64			
TRANSMISSION SERVICE	\$929,524.61	\$935,139.11	\$1,145,450.73	\$1,608,030.14			
UPLIFT	\$1,106,042.03	\$109,941.34	\$523,563.73	\$3,785,519.25			
RESIDUALS	\$3,749,618.70	(\$533,125.49)	(\$732,217.18)	\$47,828.83			
ANCILLARY SERVICES	\$1,899,132.06	\$1,309,962.34	\$1,363,719.46	\$1,612,457.32			
TCC	(\$102,746.92)	(\$45,836.35)	\$297,934.30	\$1,171,178.91			

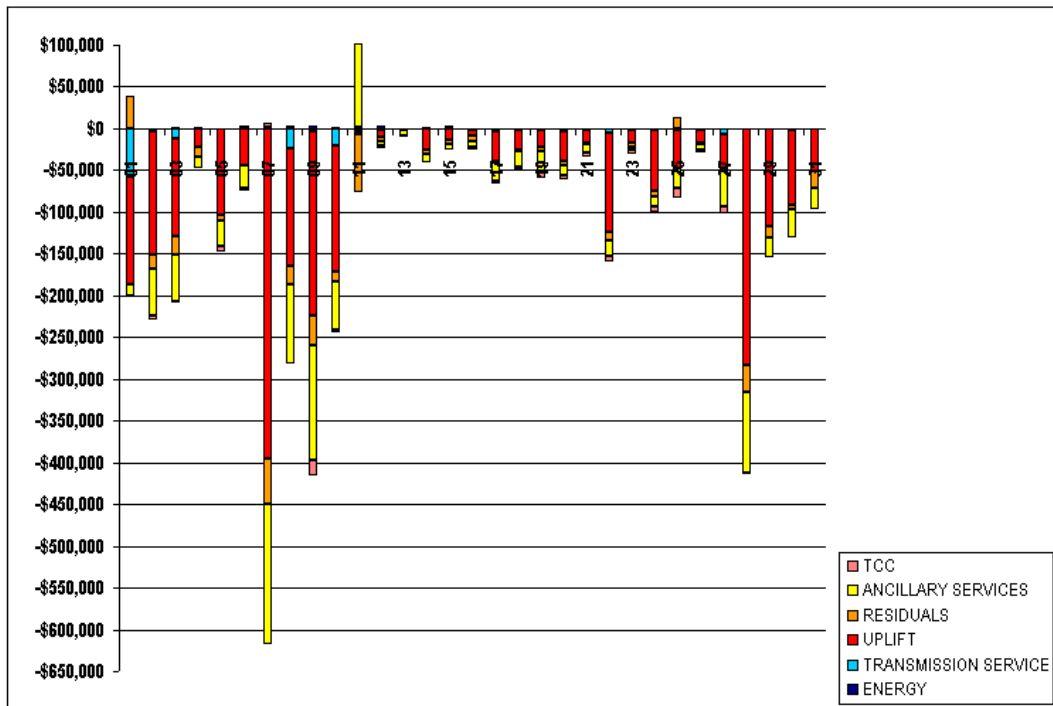


FOR DISCUSSION PURPOSES ONLY

SETTLEMENTS REPORT
ATTACHMENT D: AUGUST 2000 CLOSEOUT SETTLEMENT
OCTOBER 27, 2005

CLOSEOUT SETTLEMENT MARKET COSTS DELTA

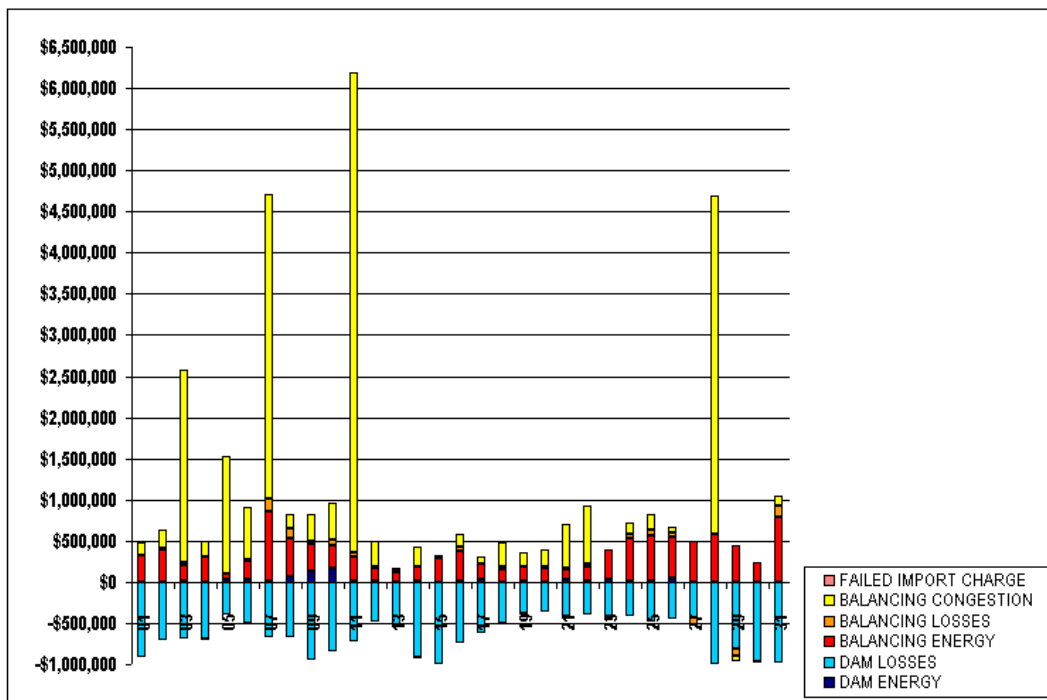
	MONDAY	TUESDAY	WEDNESDAY	THURSDAY	FRIDAY	SATURDAY	SUNDAY
		1	2	3	4	5	6
ENERGY		\$453.12	\$349.49	\$1,316.73	\$747.62	\$365.85	\$210.65
TRANSMISSION SERVICE		(\$57,123.25)	(\$2,727.71)	(\$11,803.22)	\$25.68	\$211.00	\$3,341.74
UPLIFT		(\$129,897.48)	(\$149,054.86)	(\$117,585.47)	(\$22,512.71)	(\$103,598.00)	(\$44,490.98)
RESIDUALS		\$38,989.96	(\$16,413.97)	(\$21,413.65)	(\$11,938.40)	(\$7,515.32)	(\$538.13)
ANCILLARY SERVICES		(\$12,553.46)	(\$56,401.09)	(\$57,006.43)	(\$12,558.78)	(\$30,473.64)	(\$26,889.68)
TCC		(\$812.01)	(\$5,337.07)	(\$1,529.32)	(\$1,143.88)	(\$5,653.60)	(\$2,184.11)
	7	8	9	10	11	12	13
ENERGY	\$1,718.26	\$1,152.17	\$3,998.95	\$1,058.55	\$805.37	\$2,908.63	\$71.23
TRANSMISSION SERVICE	(\$309.51)	(\$23,973.94)	(\$3,113.62)	(\$21,320.31)	(\$3,218.02)	(\$1,200.79)	(\$1,566.00)
UPLIFT	(\$394,994.44)	(\$140,041.25)	(\$221,013.13)	(\$149,700.80)	(\$3,230.08)	(\$8,776.24)	\$198.15
RESIDUALS	(\$54,905.34)	(\$21,951.23)	(\$36,339.49)	(\$11,905.00)	(\$70,368.89)	(\$5,732.83)	\$359.11
ANCILLARY SERVICES	(\$168,388.62)	(\$95,756.49)	(\$137,098.44)	(\$57,418.68)	\$101,659.30	(\$4,827.59)	(\$7,006.66)
TCC	\$4,739.67	\$1,535.85	(\$17,588.68)	(\$4,170.04)	\$1,108.79	(\$4,068.48)	(\$1,868.51)
	14	15	16	17	18	19	20
ENERGY	\$350.10	(\$277.74)	(\$365.65)	(\$420.84)	(\$568.65)	(\$750.11)	(\$635.92)
TRANSMISSION SERVICE	(\$271.63)	(\$521.25)	(\$2,220.91)	(\$2,243.04)	(\$910.34)	(\$1,899.45)	(\$2,303.80)
UPLIFT	(\$25,568.18)	(\$12,564.52)	(\$5,656.41)	(\$35,798.96)	(\$23,913.12)	(\$19,958.91)	(\$36,878.13)
RESIDUALS	(\$4,924.99)	(\$4,723.31)	(\$7,577.51)	(\$2,240.47)	(\$1,607.15)	(\$4,107.75)	(\$4,368.12)
ANCILLARY SERVICES	(\$9,339.87)	(\$6,991.15)	(\$7,157.78)	(\$22,646.20)	(\$18,439.61)	(\$25,014.76)	(\$11,645.23)
TCC	\$576.89	\$3,213.07	(\$2,319.27)	(\$2,680.45)	(\$4,010.36)	(\$8,495.01)	(\$5,613.18)
	21	22	23	24	25	26	27
ENERGY	(\$861.15)	(\$540.06)	(\$116.54)	\$178.99	(\$926.10)	(\$524.09)	(\$812.95)
TRANSMISSION SERVICE	(\$791.16)	(\$4,575.77)	(\$1,265.77)	(\$1,865.16)	(\$600.49)	(\$1,067.84)	(\$5,672.79)
UPLIFT	(\$14,766.98)	(\$119,122.15)	(\$15,815.78)	(\$73,469.78)	(\$46,223.14)	(\$14,940.90)	(\$40,852.19)
RESIDUALS	(\$2,879.72)	(\$10,216.02)	(\$5,032.70)	(\$6,894.90)	\$13,534.00	(\$2,941.19)	(\$3,728.45)
ANCILLARY SERVICES	(\$3,330.77)	(\$18,822.72)	(\$3,523.80)	(\$11,058.03)	(\$23,963.76)	(\$6,837.96)	(\$42,789.49)
TCC	(\$5,354.98)	(\$7,062.40)	(\$4,714.66)	(\$6,686.22)	(\$11,731.66)	(\$3,379.00)	(\$8,573.85)
	28	29	30	31			
ENERGY	(\$588.12)	(\$566.62)	(\$1,276.60)	(\$143.13)			
TRANSMISSION SERVICE	(\$203.15)	(\$3.75)	(\$103.00)	(\$3.24)			
UPLIFT	(\$282,973.57)	(\$116,477.05)	(\$90,049.55)	(\$50,147.70)			
RESIDUALS	(\$32,376.69)	(\$14,269.73)	(\$4,744.11)	(\$20,894.00)			
ANCILLARY SERVICES	(\$96,252.88)	(\$23,890.92)	(\$34,513.74)	(\$24,931.22)			
TCC	(\$1,763.40)	\$0.00	(\$448.90)	\$0.00			



SETTLEMENTS REPORT
ATTACHMENT D: AUGUST 2000 CLOSEOUT SETTLEMENT
OCTOBER 27, 2005

24-MONTH SETTLEMENT ADJUSTMENT MARKET RESIDUALS

	MONDAY	TUESDAY	WEDNESDAY	THURSDAY	FRIDAY	SATURDAY	SUNDAY
		1	2	3	4	5	6
DAM ENERGY		\$1,500.12	\$4,056.52	\$18,025.18	\$1,846.34	\$31,212.10	\$31,282.50
DAM LOSSES		(\$908,434.65)	(\$714,806.84)	(\$692,934.17)	(\$692,360.11)	(\$389,632.43)	(\$509,278.81)
BALANCING ENERGY		\$316,522.28	\$381,403.93	\$178,635.09	\$300,719.06	\$68,922.25	\$225,519.59
BALANCING LOSSES		\$6,881.90	\$24,526.63	\$37,524.15	(\$8,293.69)	\$1,909.95	\$14,383.06
BALANCING CONGESTION		\$157,458.10	\$231,692.56	\$2,344,677.32	\$192,629.77	\$1,422,402.36	\$633,762.21
FAILED IMPORT CHARGE		\$0.00	\$0.00	\$0.00	\$0.00	\$0.00	\$0.00
	7	8	9	10	11	12	13
DAM ENERGY	\$10,307.09	\$74,544.28	\$138,490.46	\$173,973.08	\$22,798.19	\$19,425.78	\$5,865.23
DAM LOSSES	(\$666,108.65)	(\$669,790.01)	(\$952,877.09)	(\$838,281.23)	(\$726,054.26)	(\$486,077.48)	(\$515,533.14)
BALANCING ENERGY	\$843,403.31	\$453,186.20	\$318,170.48	\$276,841.88	\$281,299.02	\$148,734.27	\$120,124.72
BALANCING LOSSES	\$165,760.26	\$115,240.28	\$42,020.57	\$57,536.28	\$52,507.73	\$11,720.14	\$25,223.69
BALANCING CONGESTION	\$3,696,688.07	\$184,720.99	\$330,704.63	\$452,147.32	\$5,836,613.97	\$325,021.48	\$19,872.41
FAILED IMPORT CHARGE	\$0.00	\$0.00	\$0.00	\$0.00	\$0.00	\$0.00	\$0.00
	14	15	16	17	18	19	20
DAM ENERGY	\$6,338.68	(\$783.59)	\$14,011.37	\$34,825.90	\$5,741.78	\$7,837.54	\$1,941.98
DAM LOSSES	(\$907,936.62)	(\$1,003,638.50)	(\$743,791.75)	(\$613,226.79)	(\$505,159.86)	(\$383,742.47)	(\$358,171.93)
BALANCING ENERGY	\$188,997.89	\$295,991.52	\$370,105.60	\$184,864.81	\$153,217.81	\$180,256.07	\$167,024.33
BALANCING LOSSES	(\$15,753.89)	\$29,773.94	\$44,755.93	\$9,050.69	\$20,373.55	(\$5,706.02)	\$20,005.74
BALANCING CONGESTION	\$238,625.30	(\$20,251.40)	\$148,355.63	\$79,010.07	\$292,916.21	\$167,608.56	\$200,715.04
FAILED IMPORT CHARGE	\$0.00	\$0.00	\$0.00	\$0.00	\$0.00	\$0.00	\$0.00
	21	22	23	24	25	26	27
DAM ENERGY	\$34,415.25	\$18,188.87	\$33,186.21	\$22,478.32	\$10,949.91	\$48,574.23	\$5,874.78
DAM LOSSES	(\$415,188.60)	(\$405,404.96)	(\$417,111.31)	(\$418,320.37)	(\$478,751.54)	(\$448,030.33)	(\$428,511.10)
BALANCING ENERGY	\$114,631.79	\$174,743.60	\$362,777.96	\$500,251.07	\$549,556.05	\$496,447.37	\$486,538.67
BALANCING LOSSES	\$26,573.34	\$26,059.55	(\$32,932.27)	\$56,218.50	\$67,234.39	\$57,888.67	(\$88,119.01)
BALANCING CONGESTION	\$520,871.04	\$703,973.85	(\$21,430.20)	\$135,326.17	\$194,109.99	\$63,531.15	(\$14,623.32)
FAILED IMPORT CHARGE	\$0.00	\$0.00	\$0.00	\$0.00	\$0.00	\$0.00	\$0.00
	28	29	30	31			
DAM ENERGY	(\$5,651.90)	(\$2,541.66)	\$965.43	(\$1,746.57)			
DAM LOSSES	(\$988,119.01)	(\$804,014.14)	(\$959,726.91)	(\$984,142.80)			
BALANCING ENERGY	\$582,479.70	\$439,254.59	\$240,671.48	\$786,457.12			
BALANCING LOSSES	\$3,210.76	(\$82,792.53)	(\$8,371.23)	\$135,913.28			
BALANCING CONGESTION	\$4,101,569.69	(\$77,606.65)	(\$9,918.74)	\$123,975.30			
FAILED IMPORT CHARGE	\$0.00	\$0.00	\$0.00	\$0.00			

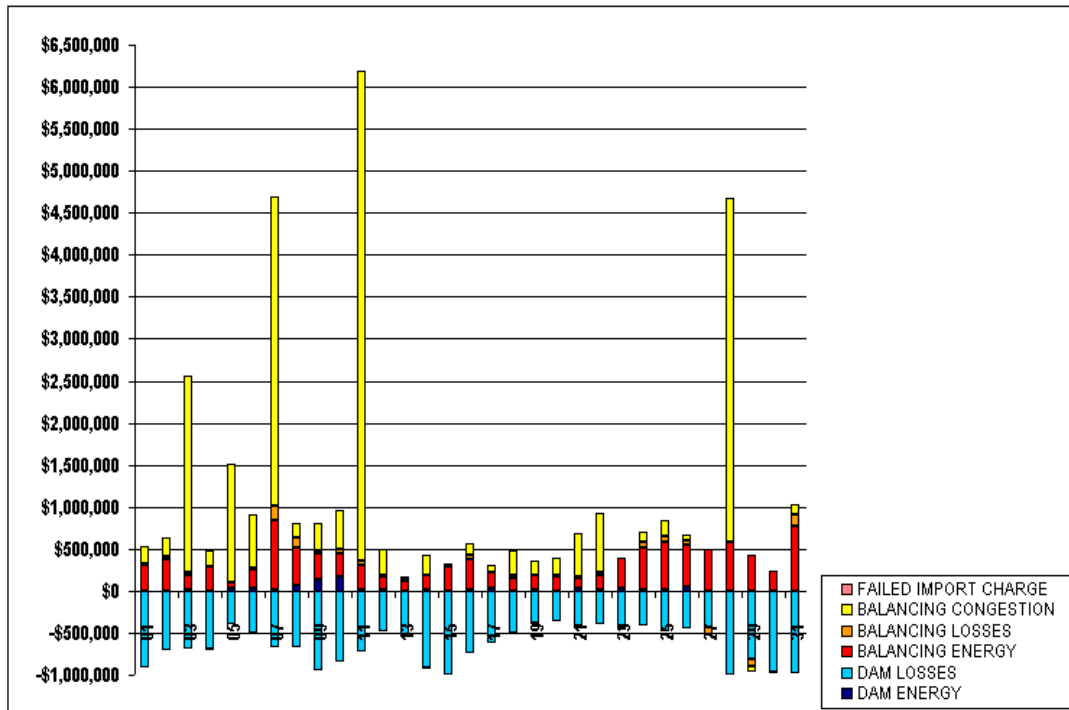


FOR DISCUSSION PURPOSES ONLY

SETTLEMENTS REPORT
ATTACHMENT D: AUGUST 2000 CLOSEOUT SETTLEMENT
OCTOBER 27, 2005

CLOSEOUT SETTLEMENT MARKET RESIDUALS ANALYSIS

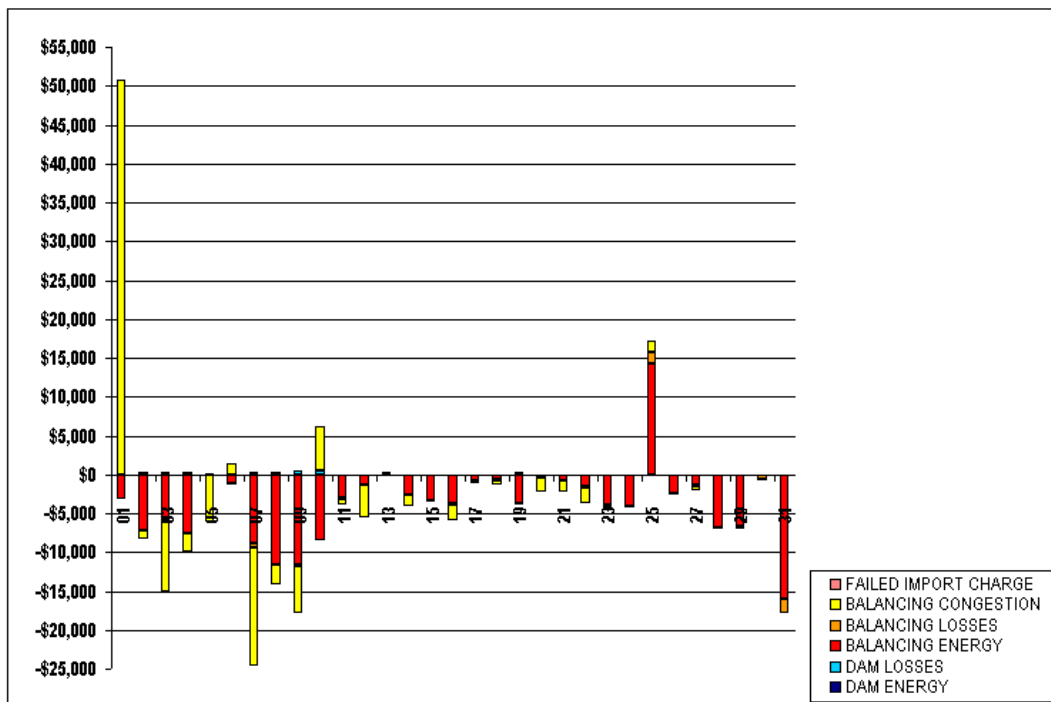
	MONDAY	TUESDAY	WEDNESDAY	THURSDAY	FRIDAY	SATURDAY	SUNDAY
		1	2	3	4	5	6
DAM ENERGY		\$1,500.12	\$4,056.52	\$18,025.31	\$1,846.38	\$31,212.10	\$31,282.50
DAM LOSSES		(\$908,430.80)	(\$714,741.48)	(\$692,657.85)	(\$691,959.95)	(\$389,600.09)	(\$509,278.81)
BALANCING ENERGY		\$313,404.75	\$374,236.55	\$172,380.35	\$293,189.61	\$68,940.12	\$224,343.66
BALANCING LOSSES		\$6,888.84	\$24,695.37	\$37,393.75	(\$8,396.88)	\$1,964.07	\$14,290.41
BALANCING CONGESTION		\$208,301.19	\$230,505.78	\$2,335,471.87	\$190,313.36	\$1,416,269.86	\$635,211.88
FAILED IMPORT CHARGE		\$0.00	\$0.00	\$0.00	\$0.00	\$0.00	\$0.00
	7	8	9	10	11	12	13
DAM ENERGY	\$10,307.09	\$74,544.43	\$138,490.91	\$173,973.08	\$22,798.19	\$19,425.78	\$5,865.23
DAM LOSSES	(\$665,833.79)	(\$669,635.26)	(\$952,383.31)	(\$837,794.80)	(\$726,060.77)	(\$486,078.59)	(\$515,533.14)
BALANCING ENERGY	\$834,586.38	\$441,507.38	\$306,639.06	\$268,339.55	\$278,399.20	\$147,486.34	\$120,468.21
BALANCING LOSSES	\$165,215.43	\$115,437.16	\$41,719.24	\$67,551.07	\$52,321.65	\$11,626.84	\$25,241.72
BALANCING CONGESTION	\$3,681,471.79	\$182,218.10	\$324,724.15	\$457,885.29	\$5,835,816.24	\$320,778.53	\$19,872.41
FAILED IMPORT CHARGE	\$0.00	\$0.00	\$0.00	\$0.00	\$0.00	\$0.00	\$0.00
	14	15	16	17	18	19	20
DAM ENERGY	\$6,338.76	(\$783.59)	\$14,011.37	\$34,825.89	\$5,741.83	\$7,837.54	\$1,941.98
DAM LOSSES	(\$907,946.18)	(\$1,003,641.39)	(\$743,925.07)	(\$613,234.46)	(\$505,166.82)	(\$383,742.47)	(\$358,171.93)
BALANCING ENERGY	\$186,432.93	\$292,651.38	\$366,600.04	\$184,183.54	\$152,587.57	\$176,596.49	\$166,661.51
BALANCING LOSSES	(\$15,798.57)	\$29,539.76	\$44,461.04	\$8,983.72	\$20,306.77	(\$5,860.39)	\$19,970.55
BALANCING CONGESTION	\$237,230.97	(\$20,231.19)	\$146,391.49	\$78,632.03	\$292,282.72	\$167,948.59	\$198,888.37
FAILED IMPORT CHARGE	\$0.00	\$0.00	\$0.00	\$0.00	\$0.00	\$0.00	\$0.00
	21	22	23	24	25	26	27
DAM ENERGY	\$34,415.31	\$18,189.44	\$33,186.86	\$22,478.34	\$10,949.91	\$48,574.23	\$5,874.78
DAM LOSSES	(\$415,192.59)	(\$405,386.56)	(\$417,117.83)	(\$418,321.41)	(\$478,752.80)	(\$448,030.33)	(\$428,511.10)
BALANCING ENERGY	\$113,924.25	\$173,159.12	\$358,923.63	\$496,257.73	\$563,750.15	\$494,100.43	\$485,183.46
BALANCING LOSSES	\$26,520.78	\$25,946.87	(\$33,263.93)	\$56,143.16	\$68,794.92	\$57,699.71	(\$88,239.37)
BALANCING CONGESTION	\$519,453.47	\$701,955.62	(\$21,785.18)	\$135,131.55	\$195,622.73	\$63,368.70	(\$15,229.24)
FAILED IMPORT CHARGE	\$0.00	\$0.00	\$0.00	\$0.00	\$0.00	\$0.00	\$0.00
	28	29	30	31			
DAM ENERGY	(\$5,652.10)	(\$2,541.64)	\$965.43	(\$1,746.55)			
DAM LOSSES	(\$988,125.90)	(\$804,018.67)	(\$959,726.91)	(\$984,151.39)			
BALANCING ENERGY	\$575,598.12	\$432,592.98	\$240,545.75	\$770,545.64			
BALANCING LOSSES	\$3,077.04	(\$4,073.23)	(\$8,864.56)	\$134,069.99			
BALANCING CONGESTION	\$4,101,486.25	(\$77,606.92)	(\$10,005.24)	\$123,942.41			
FAILED IMPORT CHARGE	\$0.00	\$0.00	\$0.00	\$0.00			



SETTLEMENTS REPORT
ATTACHMENT D: AUGUST 2000 CLOSEOUT SETTLEMENT
OCTOBER 27, 2005

CLOSEOUT SETTLEMENT MARKET RESIDUALS DELTA ANALYSIS

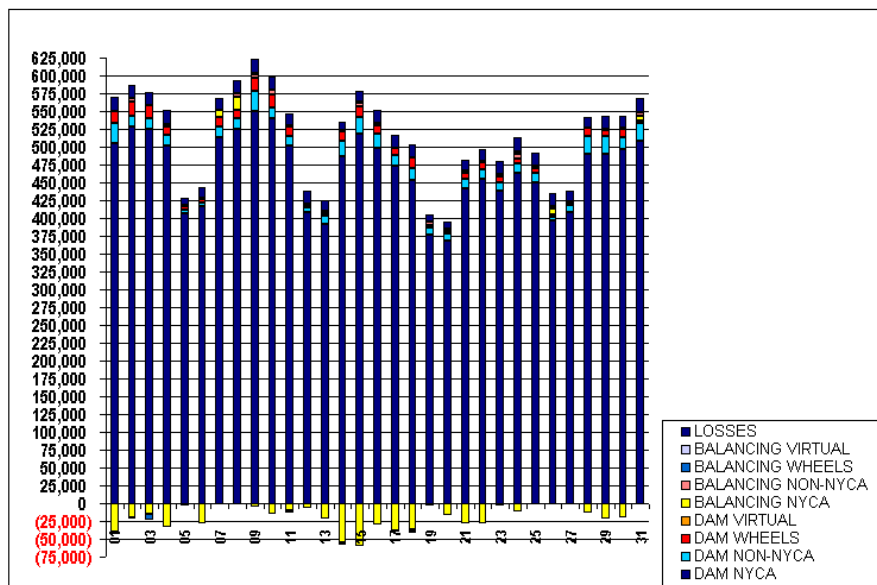
	MONDAY	TUESDAY	WEDNESDAY	THURSDAY	FRIDAY	SATURDAY	SUNDAY
		1	2	3	4	5	6
DAM ENERGY		\$0.00	\$0.00	\$0.13	\$0.04	\$0.00	\$0.00
DAM LOSSES		\$3.85	\$65.36	\$276.32	\$400.16	\$32.34	\$0.00
BALANCING ENERGY		(\$3,117.53)	(\$7,167.38)	(\$5,754.74)	(\$7,529.45)	\$17.87	(\$1,175.93)
BALANCING LOSSES		\$6.94	\$168.74	(\$130.40)	(\$103.19)	\$54.12	(\$92.65)
BALANCING CONGESTION		\$50,843.09	(\$1,186.78)	(\$9,205.45)	(\$2,316.41)	(\$6,132.50)	\$1,449.67
FAILED IMPORT CHARGE		\$0.00	\$0.00	\$0.00	\$0.00	\$0.00	\$0.00
	7	8	9	10	11	12	13
DAM ENERGY	\$0.00	\$0.15	\$0.45	\$0.00	\$0.00	\$0.00	\$0.00
DAM LOSSES	\$274.86	\$154.75	\$493.78	\$486.43	(\$6.51)	(\$1.11)	\$0.00
BALANCING ENERGY	(\$8,816.93)	(\$11,678.82)	(\$11,531.42)	(\$8,502.33)	(\$2,899.82)	(\$1,247.93)	\$343.49
BALANCING LOSSES	(\$544.83)	\$196.88	(\$301.33)	\$14.79	(\$186.08)	(\$93.30)	\$18.03
BALANCING CONGESTION	(\$15,216.28)	(\$2,502.89)	(\$5,980.48)	\$5,737.97	(\$797.73)	(\$4,242.95)	\$0.00
FAILED IMPORT CHARGE	\$0.00	\$0.00	\$0.00	\$0.00	\$0.00	\$0.00	\$0.00
	14	15	16	17	18	19	20
DAM ENERGY	\$0.08	\$0.00	\$0.00	(\$0.01)	\$0.05	\$0.00	\$0.00
DAM LOSSES	(\$9.56)	(\$2.89)	(\$133.32)	(\$7.67)	(\$6.96)	\$0.00	\$0.00
BALANCING ENERGY	(\$2,564.96)	(\$3,340.14)	(\$3,505.56)	(\$681.27)	(\$630.24)	(\$3,659.58)	(\$362.82)
BALANCING LOSSES	(\$44.68)	(\$234.18)	(\$294.89)	(\$66.97)	(\$66.78)	(\$154.37)	(\$35.19)
BALANCING CONGESTION	(\$1,394.33)	\$20.21	(\$1,964.14)	(\$378.04)	(\$633.49)	\$340.03	(\$1,826.67)
FAILED IMPORT CHARGE	\$0.00	\$0.00	\$0.00	\$0.00	\$0.00	\$0.00	\$0.00
	21	22	23	24	25	26	27
DAM ENERGY	\$0.06	\$0.57	\$0.65	\$0.02	\$0.00	\$0.00	\$0.00
DAM LOSSES	(\$3.99)	\$18.40	(\$6.52)	(\$1.04)	(\$1.26)	\$0.00	\$0.00
BALANCING ENERGY	(\$707.54)	(\$1,584.48)	(\$3,854.33)	(\$3,993.34)	\$14,194.10	(\$2,346.94)	(\$1,355.21)
BALANCING LOSSES	(\$52.56)	(\$112.68)	(\$331.66)	(\$75.34)	\$1,560.53	(\$188.96)	(\$120.36)
BALANCING CONGESTION	(\$1,417.57)	(\$2,018.23)	(\$354.98)	(\$194.62)	\$1,512.74	(\$162.45)	(\$605.92)
FAILED IMPORT CHARGE	\$0.00	\$0.00	\$0.00	\$0.00	\$0.00	\$0.00	\$0.00
	28	29	30	31			
DAM ENERGY	(\$0.20)	\$0.02	\$0.00	\$0.02			
DAM LOSSES	(\$6.89)	(\$4.53)	\$0.00	(\$8.59)			
BALANCING ENERGY	(\$6,881.58)	(\$6,661.61)	(\$125.73)	(\$15,911.48)			
BALANCING LOSSES	(\$133.72)	(\$280.70)	(\$493.33)	(\$1,843.29)			
BALANCING CONGESTION	(\$83.44)	(\$0.27)	(\$86.50)	(\$32.89)			
FAILED IMPORT CHARGE	\$0.00	\$0.00	\$0.00	\$0.00			



SETTLEMENTS REPORT
ATTACHMENT D: AUGUST 2000 CLOSEOUT SETTLEMENT
OCTOBER 27, 2005

24-MONTH SETTLEMENT ADJUSTMENT MARKET WITHDRAWALS ANALYSIS

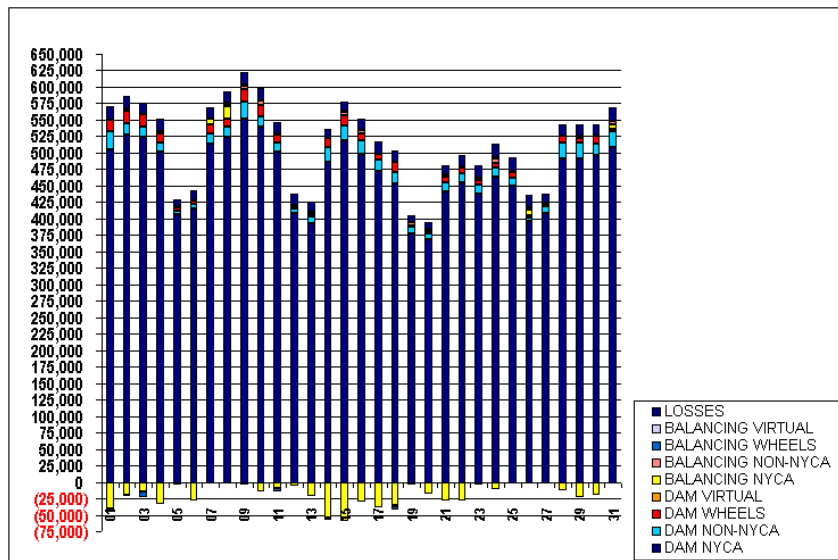
	MONDAY	TUESDAY	WEDNESDAY	THURSDAY	FRIDAY	SATURDAY	SUNDAY
		1	2	3	4	5	6
DAM NYCA		504,235	527,555	524,308	501,714	406,625	416,054
DAM NON-NYCA		29,140	16,412	15,171	14,221	5,803	5,785
DAM WHEELS		17,178	18,958	18,738	12,788	4,880	4,880
DAM VIRTUAL		0	0	0	0	0	0
BALANCING NYCA		(40,676)	(19,717)	(15,416)	(33,858)	(3,520)	(28,624)
BALANCING NON-NYCA		(1,818)	4,834	741	2,057	1,784	907
BALANCING WHEELS		(1,484)	(2,610)	(8,382)	1,175	(248)	(65)
BALANCING VIRTUAL		0	0	0	0	0	0
LOSSES		19,577	19,205	17,136	19,663	9,757	15,039
	7	8	9	10	11	12	13
DAM NYCA	513,888	524,641	550,782	540,201	501,018	408,840	392,308
DAM NON-NYCA	15,144	15,675	26,916	14,415	14,415	5,802	10,586
DAM WHEELS	13,108	11,398	19,608	18,558	12,098	3,162	3,280
DAM VIRTUAL	0	0	0	0	0	0	0
BALANCING NYCA	8,842	19,005	(6,041)	(14,223)	(9,183)	(6,378)	(21,743)
BALANCING NON-NYCA	(190)	3,774	5,154	6,662	1,868	2,033	1,554
BALANCING WHEELS	(952)	1,100	188	(1,193)	(4,771)	164	2,075
BALANCING VIRTUAL	0	0	0	0	0	0	0
LOSSES	17,803	17,523	19,935	19,065	16,686	18,260	15,722
	14	15	16	17	18	19	20
DAM NYCA	485,968	517,968	498,199	472,538	453,204	377,103	368,325
DAM NON-NYCA	22,986	23,601	20,859	16,226	16,892	9,802	9,786
DAM WHEELS	13,198	15,048	10,648	9,448	15,598	3,280	3,280
DAM VIRTUAL	0	0	0	0	0	0	0
BALANCING NYCA	(64,479)	(69,234)	(30,323)	(38,744)	(36,094)	(3,904)	(17,230)
BALANCING NON-NYCA	669	4,600	3,776	79	(1,765)	4,075	1,426
BALANCING WHEELS	(3,797)	1,742	0	(850)	(3,913)	589	1,428
BALANCING VIRTUAL	0	0	0	0	0	0	0
LOSSES	12,634	15,525	17,887	18,293	17,862	9,685	11,163
	21	22	23	24	25	26	27
DAM NYCA	441,606	454,847	437,872	463,792	449,611	396,443	407,693
DAM NON-NYCA	12,957	13,709	12,860	13,027	12,891	5,802	10,621
DAM WHEELS	9,448	9,448	7,248	7,248	7,248	3,280	3,280
DAM VIRTUAL	0	0	0	0	0	0	0
BALANCING NYCA	(29,051)	(27,682)	(3,576)	(11,415)	(1,966)	8,185	(1,950)
BALANCING NON-NYCA	2,490	802	3,250	6,709	1,901	3,200	1,251
BALANCING WHEELS	996	823	0	2,223	896	165	189
BALANCING VIRTUAL	0	0	0	0	0	0	0
LOSSES	13,433	16,240	18,971	20,814	19,612	18,208	15,403
	28	29	30	31			
DAM NYCA	490,370	490,761	495,886	509,014			
DAM NON-NYCA	24,341	24,258	17,844	24,327			
DAM WHEELS	11,248	8,048	11,248	3,348			
DAM VIRTUAL	0	0	0	0			
BALANCING NYCA	(12,682)	(22,455)	(20,594)	5,952			
BALANCING NON-NYCA	(22)	1,298	887	6,126			
BALANCING WHEELS	200	1,244	0	(97)			
BALANCING VIRTUAL	0	0	0	0			
LOSSES	16,325	18,131	18,038	19,647			



SETTLEMENTS REPORT
ATTACHMENT D: AUGUST 2000 CLOSEOUT SETTLEMENT
OCTOBER 27, 2005

CLOSEOUT SETTLEMENT MARKET WITHDRAWALS ANALYSIS

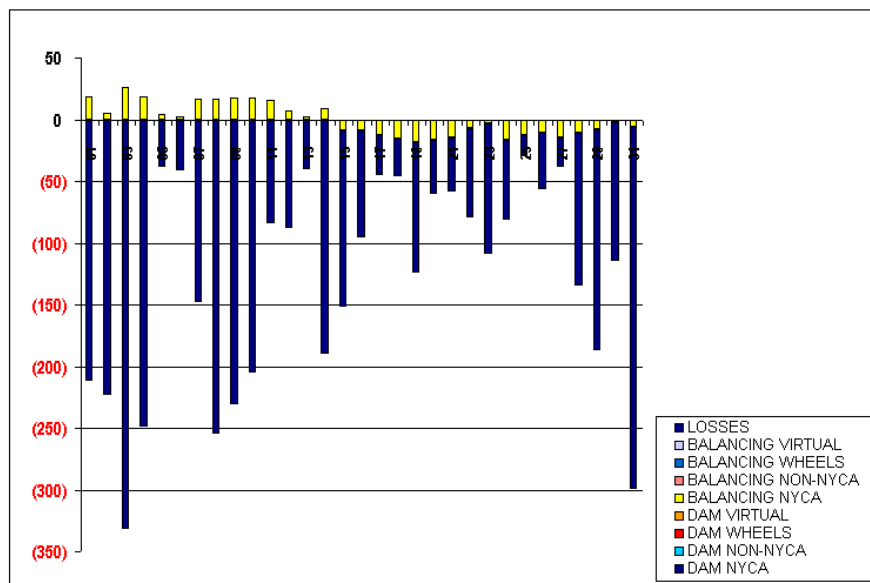
	MONDAY	TUESDAY	WEDNESDAY	THURSDAY	FRIDAY	SATURDAY	SUNDAY
		1	2	3	4	5	6
DAM NYCA		504,235	527,555	524,308	501,714	406,625	416,054
DAM NON-NYCA		29,140	16,412	15,171	14,221	5,803	5,785
DAM WHEELS		17,178	18,958	18,738	12,788	4,880	4,880
DAM VIRTUAL		0	0	0	0	0	0
BALANCING NYCA		(40,658)	(19,712)	(15,390)	(33,839)	(3,516)	(28,622)
BALANCING NON-NYCA		(1,818)	4,834	741	2,057	1,784	907
BALANCING WHEELS		(1,484)	(2,610)	(8,382)	1,175	(248)	(65)
BALANCING VIRTUAL		0	0	0	0	0	0
LOSSES		19,366	18,981	16,804	19,415	9,718	14,997
	7	8	9	10	11	12	13
DAM NYCA	513,888	524,641	550,782	540,201	501,018	408,840	392,308
DAM NON-NYCA	15,144	15,675	26,916	14,415	14,415	5,802	10,586
DAM WHEELS	13,108	11,398	19,608	18,558	12,098	3,162	3,280
DAM VIRTUAL	0	0	0	0	0	0	0
BALANCING NYCA	8,859	19,022	(5,024)	(14,206)	(9,168)	(6,371)	(21,741)
BALANCING NON-NYCA	(190)	3,774	5,154	6,662	1,868	2,033	1,554
BALANCING WHEELS	(952)	1,100	188	(1,193)	(4,771)	164	2,075
BALANCING VIRTUAL	0	0	0	0	0	0	0
LOSSES	17,656	17,269	19,704	18,859	16,601	18,172	15,682
	14	15	16	17	18	19	20
DAM NYCA	485,968	517,968	498,199	472,538	453,204	377,103	368,225
DAM NON-NYCA	22,986	23,601	20,859	16,226	16,892	9,802	9,786
DAM WHEELS	13,198	15,048	10,648	9,448	15,598	3,280	3,280
DAM VIRTUAL	0	0	0	0	0	0	0
BALANCING NYCA	(54,470)	(59,243)	(20,331)	(38,757)	(36,110)	(3,922)	(17,247)
BALANCING NON-NYCA	669	4,600	3,776	79	(1,765)	4,075	1,426
BALANCING WHEELS	(3,797)	1,742	0	(850)	(3,913)	589	1,428
BALANCING VIRTUAL	0	0	0	0	0	0	0
LOSSES	12,444	15,382	17,800	18,261	17,832	9,579	11,119
	21	22	23	24	25	26	27
DAM NYCA	441,606	454,847	437,872	463,792	449,611	396,443	407,693
DAM NON-NYCA	12,957	13,709	12,860	13,027	12,891	5,802	10,621
DAM WHEELS	9,448	9,448	7,248	7,248	7,248	3,280	3,280
DAM VIRTUAL	0	0	0	0	0	0	0
BALANCING NYCA	(29,066)	(27,689)	(3,580)	(11,432)	(1,978)	\$,174	(1,964)
BALANCING NON-NYCA	2,490	803	3,250	6,709	1,901	3,300	1,251
BALANCING WHEELS	996	823	0	2,223	896	155	189
BALANCING VIRTUAL	0	0	0	0	0	0	0
LOSSES	13,389	16,168	18,865	20,749	19,595	18,162	15,379
	28	29	30	31			
DAM NYCA	490,370	490,751	495,886	509,014			
DAM NON-NYCA	24,341	24,258	17,844	24,327			
DAM WHEELS	11,248	8,048	11,248	3,348			
DAM VIRTUAL	0	0	0	0			
BALANCING NYCA	(12,693)	(22,463)	(20,596)	5,946			
BALANCING NON-NYCA	(22)	1,298	887	6,126			
BALANCING WHEELS	200	1,244	0	(87)			
BALANCING VIRTUAL	0	0	0	0			
LOSSES	16,202	17,952	17,926	19,354			



SETTLEMENTS REPORT
ATTACHMENT D: AUGUST 2000 CLOSEOUT SETTLEMENT
OCTOBER 27, 2005

CLOSEOUT SETTLEMENT MARKET WITHDRAWALS DELTA ANALYSIS

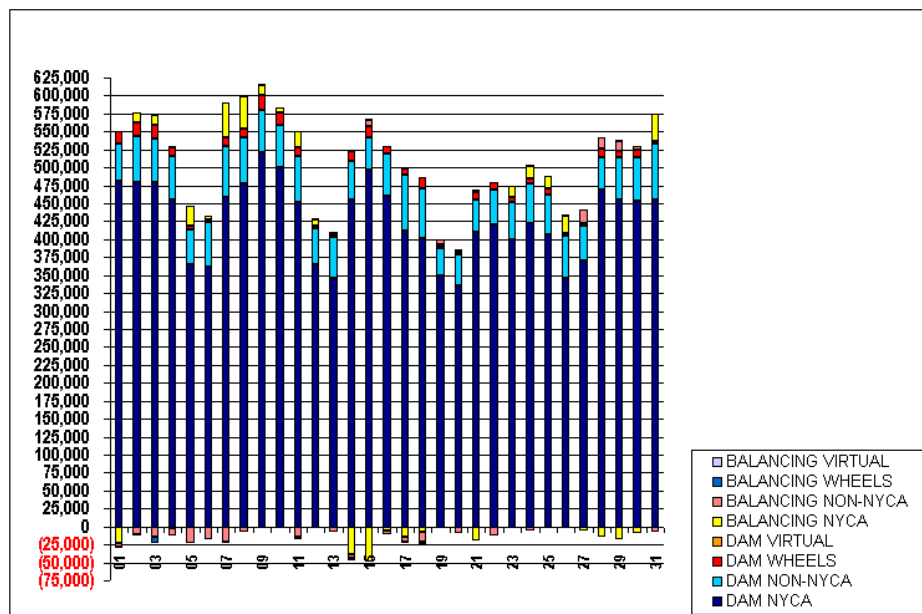
	MONDAY	TUESDAY	WEDNESDAY	THURSDAY	FRIDAY	SATURDAY	SUNDAY
		1	2	3	4	5	6
DAM NYCA		0	0	0	0	0	0
DAM NON-NYCA		0	0	0	0	0	0
DAM WHEELS		0	0	0	0	0	0
DAM VIRTUAL		0	0	0	0	0	0
BALANCING NYCA		19	5	27	18	4	2
BALANCING NON-NYCA		0	0	0	0	0	0
BALANCING WHEELS		0	0	0	0	0	0
BALANCING VIRTUAL		0	0	0	0	0	0
LOSSES		(211)	(224)	(332)	(249)	(39)	(41)
	7	8	9	10	11	12	13
DAM NYCA	0	0	0	0	0	0	0
DAM NON-NYCA	0	0	0	0	0	0	0
DAM WHEELS	0	0	0	0	0	0	0
DAM VIRTUAL	0	0	0	0	0	0	0
BALANCING NYCA	17	16	18	18	15	7	2
BALANCING NON-NYCA	0	0	0	0	0	0	0
BALANCING WHEELS	0	0	0	0	0	0	0
BALANCING VIRTUAL	0	0	0	0	0	0	0
LOSSES	(143)	(254)	(231)	(206)	(84)	(82)	(40)
	14	15	16	17	18	19	20
DAM NYCA	0	0	0	0	0	0	0
DAM NON-NYCA	0	0	0	0	0	0	0
DAM WHEELS	0	0	0	0	0	0	0
DAM VIRTUAL	0	0	0	0	0	0	0
BALANCING NYCA	9	(9)	(9)	(12)	(15)	(18)	(17)
BALANCING NON-NYCA	0	0	0	0	0	0	0
BALANCING WHEELS	0	0	0	0	0	0	0
BALANCING VIRTUAL	0	0	0	0	0	0	0
LOSSES	(190)	(143)	(87)	(32)	(31)	(106)	(44)
	21	22	23	24	25	26	27
DAM NYCA	0	0	0	0	0	0	0
DAM NON-NYCA	0	0	0	0	0	0	0
DAM WHEELS	0	0	0	0	0	0	0
DAM VIRTUAL	0	0	0	0	0	0	0
BALANCING NYCA	(14)	(7)	(4)	(17)	(12)	(11)	(14)
BALANCING NON-NYCA	0	0	0	0	0	0	0
BALANCING WHEELS	0	0	0	0	0	0	0
BALANCING VIRTUAL	0	0	0	0	0	0	0
LOSSES	(44)	(72)	(106)	(65)	(17)	(46)	(24)
	28	29	30	31			
DAM NYCA	0	0	0	0			
DAM NON-NYCA	0	0	0	0			
DAM WHEELS	0	0	0	0			
DAM VIRTUAL	0	0	0	0			
BALANCING NYCA	(11)	(3)	(2)	(6)			
BALANCING NON-NYCA	0	0	0	0			
BALANCING WHEELS	0	0	0	0			
BALANCING VIRTUAL	0	0	0	0			
LOSSES	(123)	(179)	(112)	(233)			



SETTLEMENTS REPORT
ATTACHMENT D: AUGUST 2000 CLOSEOUT SETTLEMENT
OCTOBER 27, 2005

24-MONTH SETTLEMENT ADJUSTMENT MARKET SUPPLY ANALYSIS

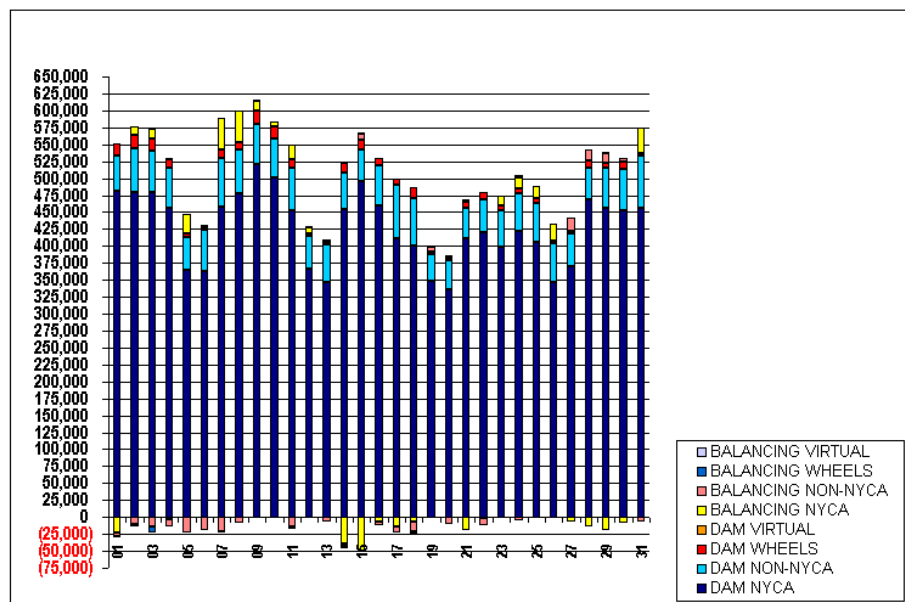
	MONDAY	TUESDAY	WEDNESDAY	THURSDAY	FRIDAY	SATURDAY	SUNDAY
		1	2	3	4	5	6
DAM NYCA		480,897	479,946	480,258	455,439	364,723	362,373
DAM NON-NYCA		52,504	64,132	59,614	60,556	49,291	60,950
DAM WHEELS		17,178	18,958	18,738	12,788	4,880	4,880
DAM VIRTUAL		0	0	0	0	0	0
BALANCING NYCA		(22,727)	13,292	14,974	(2,925)	27,840	3,665
BALANCING NON-NYCA		(5,376)	(10,581)	(14,733)	(10,543)	(22,801)	(18,627)
BALANCING WHEELS		(1,484)	(2,610)	(8,382)	1,175	(248)	(65)
BALANCING VIRTUAL		0	0	0	0	0	0
	7	8	9	10	11	12	13
DAM NYCA	458,644	477,854	520,256	500,452	452,198	365,869	346,015
DAM NON-NYCA	70,719	64,221	60,302	57,968	63,840	49,711	57,220
DAM WHEELS	13,108	11,398	19,608	18,558	12,098	3,162	3,280
DAM VIRTUAL	0	0	0	0	0	0	0
BALANCING NYCA	47,138	45,989	14,084	7,001	21,656	9,067	1,042
BALANCING NON-NYCA	(22,013)	(8,094)	1,893	(290)	(13,492)	2,010	(6,900)
BALANCING WHEELS	(952)	1,100	188	(1,193)	(4,771)	164	2,075
BALANCING VIRTUAL	0	0	0	0	0	0	0
	14	15	16	17	18	19	20
DAM NYCA	455,254	496,513	460,436	411,448	400,757	349,119	335,232
DAM NON-NYCA	53,819	45,036	58,970	78,201	69,529	38,232	42,982
DAM WHEELS	13,198	15,048	10,648	9,448	15,598	3,280	3,280
DAM VIRTUAL	0	0	0	0	0	0	0
BALANCING NYCA	(39,253)	(49,564)	(6,174)	(14,147)	(7,134)	1,974	3,483
BALANCING NON-NYCA	(8,822)	9,394	(6,333)	(7,973)	(14,253)	6,836	(9,778)
BALANCING WHEELS	(3,797)	1,742	0	(850)	(3,913)	589	1,428
BALANCING VIRTUAL	0	0	0	0	0	0	0
	21	22	23	24	25	26	27
DAM NYCA	410,483	420,277	399,111	421,659	406,569	346,486	369,458
DAM NON-NYCA	45,468	49,246	53,115	56,102	56,421	58,169	49,158
DAM WHEELS	9,448	9,448	7,248	7,248	7,248	3,280	3,280
DAM VIRTUAL	0	0	0	0	0	0	0
BALANCING NYCA	(19,110)	(1,235)	14,352	16,612	17,424	24,787	(6,338)
BALANCING NON-NYCA	3,233	(11,420)	1,148	(4,827)	(507)	745	19,390
BALANCING WHEELS	996	823	0	2,223	896	155	189
BALANCING VIRTUAL	0	0	0	0	0	0	0
	28	29	30	31			
DAM NYCA	468,734	456,050	452,929	455,828			
DAM NON-NYCA	45,865	58,905	60,828	77,468			
DAM WHEELS	11,248	8,048	11,248	3,348			
DAM VIRTUAL	0	0	0	0			
BALANCING NYCA	(13,856)	(18,572)	(9,168)	37,432			
BALANCING NON-NYCA	16,088	13,751	5,460	(6,602)			
BALANCING WHEELS	200	1,244	0	(97)			
BALANCING VIRTUAL	0	0	0	0			



SETTLEMENTS REPORT
ATTACHMENT D: AUGUST 2000 CLOSEOUT SETTLEMENT
OCTOBER 27, 2005

CLOSEOUT SETTLEMENT MARKET SUPPLY ANALYSIS

	MONDAY	TUESDAY	WEDNESDAY	THURSDAY	FRIDAY	SATURDAY	SUNDAY
		1	2	3	4	5	6
DAM NYCA		480,897	479,946	480,258	455,439	364,723	362,373
DAM NON-NYCA		52,504	64,132	59,614	60,556	49,291	60,950
DAM WHEELS		17,178	18,958	18,738	12,788	4,880	4,880
DAM VIRTUAL		0	0	0	0	0	0
BALANCING NYCA		(22,913)	13,074	14,670	(3,156)	27,905	3,626
BALANCING NON-NYCA		(5,376)	(10,581)	(14,733)	(10,548)	(22,801)	(18,627)
BALANCING WHEELS		(1,484)	(2,610)	(8,382)	1,175	(248)	(65)
BALANCING VIRTUAL		0	0	0	0	0	0
	7	8	9	10	11	12	13
DAM NYCA	458,644	477,854	520,256	500,452	452,198	365,869	346,015
DAM NON-NYCA	70,718	64,221	60,302	57,968	63,840	49,711	57,220
DAM WHEELS	13,108	11,398	19,608	18,558	12,098	3,162	3,280
DAM VIRTUAL	0	0	0	0	0	0	0
BALANCING NYCA	47,006	45,751	13,872	6,813	21,587	8,986	1,004
BALANCING NON-NYCA	(22,013)	(8,094)	1,893	(290)	(13,492)	2,010	(6,900)
BALANCING WHEELS	(952)	1,100	188	(1,193)	(4,771)	164	2,075
BALANCING VIRTUAL	0	0	0	0	0	0	0
	14	15	16	17	18	19	20
DAM NYCA	455,254	496,512	460,436	411,448	400,757	349,119	335,232
DAM NON-NYCA	53,818	45,036	58,970	78,201	69,529	38,232	42,982
DAM WHEELS	13,198	15,048	10,648	9,448	15,598	3,280	3,280
DAM VIRTUAL	0	0	0	0	0	0	0
BALANCING NYCA	(39,435)	(49,716)	(6,271)	(14,192)	(7,180)	1,850	3,423
BALANCING NON-NYCA	(3,822)	9,394	(5,333)	(7,973)	(14,253)	6,836	(9,778)
BALANCING WHEELS	(3,797)	1,742	0	(850)	(3,913)	589	1,428
BALANCING VIRTUAL	0	0	0	0	0	0	0
	21	22	23	24	25	26	27
DAM NYCA	410,483	420,277	399,111	421,659	406,569	346,486	369,458
DAM NON-NYCA	45,468	49,246	53,115	56,102	56,421	58,169	49,158
DAM WHEELS	9,448	9,448	7,248	7,248	7,248	3,280	3,280
DAM VIRTUAL	0	0	0	0	0	0	0
BALANCING NYCA	(19,168)	(1,314)	14,243	16,531	17,394	24,731	(6,376)
BALANCING NON-NYCA	3,233	(11,420)	1,148	(4,827)	(507)	745	19,390
BALANCING WHEELS	996	823	0	2,223	896	155	189
BALANCING VIRTUAL	0	0	0	0	0	0	0
	28	29	30	31			
DAM NYCA	468,734	456,050	452,929	455,828			
DAM NON-NYCA	45,865	58,905	60,828	77,468			
DAM WHEELS	11,248	8,048	11,248	3,348			
DAM VIRTUAL	0	0	0	0			
BALANCING NYCA	(13,390)	(18,760)	(9,283)	37,132			
BALANCING NON-NYCA	16,088	13,751	5,460	(6,602)			
BALANCING WHEELS	200	1,244	0	(97)			
BALANCING VIRTUAL	0	0	0	0			



SETTLEMENTS REPORT
 ATTACHMENT D: AUGUST 2000 CLOSEOUT SETTLEMENT
 OCTOBER 27, 2005

CLOSEOUT SETTLEMENT MARKET SUPPLY DELTA ANALYSIS

	MONDAY	TUESDAY	WEDNESDAY	THURSDAY	FRIDAY	SATURDAY	SUNDAY
		1	2	3	4	5	6
DAM NYCA	0	0	0	0	0	0	0
DAM NON-NYCA	0	0	0	0	0	0	0
DAM WHEELS	0	0	0	0	0	0	0
DAM VIRTUAL	0	0	0	0	0	0	0
BALANCING NYCA		(193)	(218)	(205)	(230)	(35)	(39)
BALANCING NON-NYCA	0	0	0	0	0	0	0
BALANCING WHEELS	0	0	0	0	0	0	0
BALANCING VIRTUAL	0	0	0	0	0	0	0
	7	8	9	10	11	12	13
DAM NYCA	0	0	0	0	0	0	0
DAM NON-NYCA	0	0	0	0	0	0	0
DAM WHEELS	0	0	0	0	0	0	0
DAM VIRTUAL	0	0	0	0	0	0	0
BALANCING NYCA	(132)	(238)	(213)	(188)	(69)	(81)	(68)
BALANCING NON-NYCA	0	0	0	0	0	0	0
BALANCING WHEELS	0	0	0	0	0	0	0
BALANCING VIRTUAL	0	0	0	0	0	0	0
	14	15	16	17	18	19	20
DAM NYCA	0	0	0	0	0	0	0
DAM NON-NYCA	0	0	0	0	0	0	0
DAM WHEELS	0	0	0	0	0	0	0
DAM VIRTUAL	0	0	0	0	0	0	0
BALANCING NYCA	(181)	(152)	(96)	(45)	(46)	(124)	(61)
BALANCING NON-NYCA	0	0	0	0	0	0	0
BALANCING WHEELS	0	0	0	0	0	0	0
BALANCING VIRTUAL	0	0	0	0	0	0	0
	21	22	23	24	25	26	27
DAM NYCA	0	0	0	0	0	0	0
DAM NON-NYCA	0	0	0	0	0	0	0
DAM WHEELS	0	0	0	0	0	0	0
DAM VIRTUAL	0	0	0	0	0	0	0
BALANCING NYCA	(52)	(79)	(109)	(81)	(20)	(56)	(28)
BALANCING NON-NYCA	0	0	0	0	0	0	0
BALANCING WHEELS	0	0	0	0	0	0	0
BALANCING VIRTUAL	0	0	0	0	0	0	0
	28	29	30	31			
DAM NYCA	0	0	0	0			
DAM NON-NYCA	0	0	0	0			
DAM WHEELS	0	0	0	0			
DAM VIRTUAL	0	0	0	0			
BALANCING NYCA	(134)	(188)	(115)	(200)			
BALANCING NON-NYCA	0	0	0	0			
BALANCING WHEELS	0	0	0	0			
BALANCING VIRTUAL	0	0	0	0			

