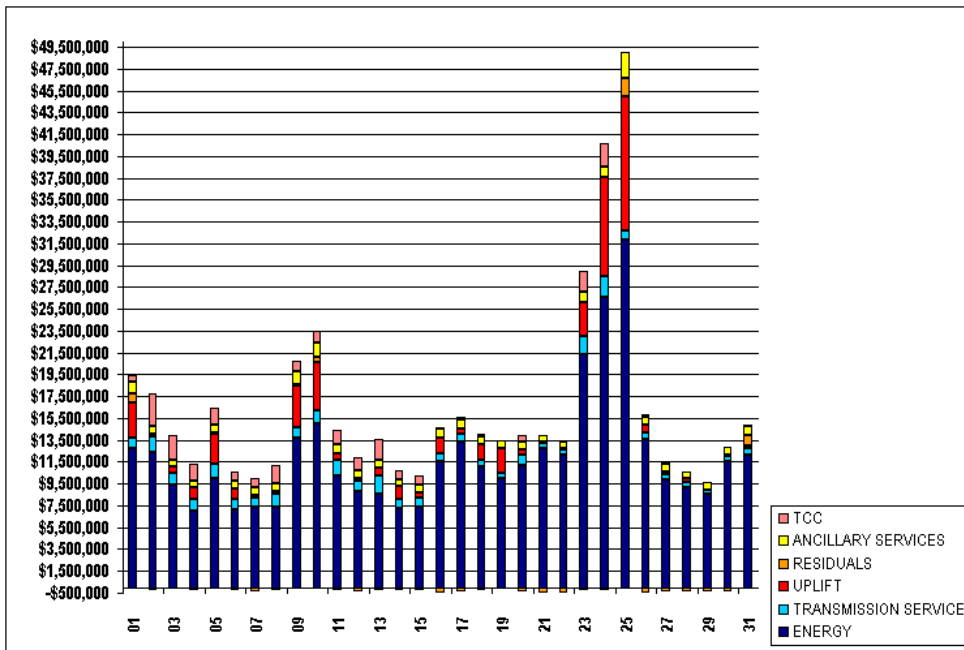


SETTLEMENTS REPORT
ATTACHMENT E: JULY 2001 CLOSEOUT SETTLEMENT
OCTOBER 27, 2005

24-MONTH SETTLEMENT ADJUSTMENT MARKET COSTS

	MONDAY	TUESDAY	WEDNESDAY	THURSDAY	FRIDAY	SATURDAY	SUNDAY
							1
ENERGY							\$12,784,517.41
TRANSMISSION SERVICE							\$911,362.11
UPLIFT							\$3,256,248.10
RESIDUALS							\$857,847.94
ANCILLARY SERVICES							\$1,002,960.80
TCC							\$664,097.24
							2
ENERGY	\$12,353,601.26	\$9,405,488.62	\$6,977,369.56	\$9,952,861.21	\$7,177,252.99	\$7,349,079.16	\$7,436,044.05
TRANSMISSION SERVICE	\$1,492,428.88	\$1,110,589.93	\$1,168,329.16	\$1,313,370.45	\$974,131.90	\$837,374.38	\$1,167,784.42
UPLIFT	\$221,406.11	\$545,801.19	\$968,621.87	\$2,757,532.11	\$924,696.07	\$320,251.89	\$233,455.97
RESIDUALS	(\$251,328.21)	(\$143,981.34)	(\$208,031.77)	\$118,028.88	(\$279,411.58)	(\$370,682.35)	(\$297,537.95)
ANCILLARY SERVICES	\$664,073.42	\$641,387.44	\$630,846.59	\$809,116.75	\$660,533.71	\$679,557.97	\$670,444.28
TCC	\$3,021,503.18	\$2,218,009.56	\$1,589,645.07	\$1,556,725.91	\$912,519.80	\$795,173.25	\$1,743,817.62
							3
ENERGY	\$13,701,888.56	\$15,057,132.01	\$10,226,523.57	\$8,781,444.83	\$8,565,460.11	\$7,232,447.09	\$7,363,132.26
TRANSMISSION SERVICE	\$990,166.48	\$1,114,991.53	\$1,483,132.33	\$1,018,687.29	\$1,729,680.25	\$822,363.07	\$874,412.76
UPLIFT	\$3,769,563.18	\$4,511,273.08	\$525,493.47	\$203,435.25	\$705,331.26	\$1,215,860.05	\$494,186.38
RESIDUALS	\$160,291.99	\$421,154.51	(\$287,873.48)	(\$372,158.56)	(\$313,609.72)	(\$319,903.70)	(\$294,619.87)
ANCILLARY SERVICES	\$1,222,770.16	\$1,343,838.52	\$824,087.81	\$707,415.69	\$676,383.22	\$619,602.71	\$656,045.56
TCC	\$850,158.62	\$1,011,517.02	\$1,387,570.04	\$1,166,535.34	\$1,877,314.16	\$785,219.30	\$854,058.31
							4
ENERGY	\$11,598,306.84	\$13,329,543.14	\$11,026,050.73	\$9,966,853.57	\$11,200,154.56	\$12,778,495.52	\$12,121,557.14
TRANSMISSION SERVICE	\$638,065.14	\$773,041.48	\$668,933.75	\$519,102.52	\$948,565.90	\$422,747.44	\$455,377.09
UPLIFT	\$1,510,674.43	\$467,437.46	\$1,377,225.16	\$2,283,723.65	\$499,228.08	\$109,734.36	\$150,813.62
RESIDUALS	(\$451,624.06)	(\$424,164.28)	(\$217,132.61)	(\$164,612.17)	(\$390,794.51)	(\$514,561.28)	(\$471,830.68)
ANCILLARY SERVICES	\$770,582.14	\$802,619.73	\$762,868.02	\$720,188.54	\$691,705.32	\$689,574.29	\$661,092.19
TCC	\$88,944.99	\$303,532.59	\$240,131.48	\$40,560.33	\$578,486.78	(\$106,373.32)	(\$40,358.24)
							5
ENERGY	\$21,299,701.90	\$26,613,958.04	\$31,850,113.63	\$13,571,340.77	\$9,896,015.85	\$9,186,423.96	\$8,559,556.31
TRANSMISSION SERVICE	\$1,660,613.22	\$1,911,194.51	\$820,549.56	\$662,346.64	\$519,523.90	\$405,992.95	\$364,645.23
UPLIFT	\$3,111,653.51	\$9,009,662.40	\$12,334,451.06	\$658,516.13	\$208,234.34	\$370,142.74	\$58,632.41
RESIDUALS	(\$300,711.67)	(\$218,106.93)	\$1,699,217.61	(\$457,958.64)	(\$408,471.49)	(\$335,732.82)	(\$419,780.90)
ANCILLARY SERVICES	\$1,024,437.61	\$1,006,087.20	\$2,364,257.44	\$763,444.64	\$694,434.67	\$628,235.73	\$613,155.91
TCC	\$1,840,778.28	\$2,156,394.58	(\$88,439.97)	\$172,126.29	\$101,933.11	\$60,415.07	\$9,885.90
							6
ENERGY	\$11,589,083.37	\$12,111,734.09					
TRANSMISSION SERVICE	\$445,373.02	\$659,449.15					
UPLIFT	\$80,154.90	\$214,960.04					
RESIDUALS	(\$334,879.53)	\$1,008,141.72					
ANCILLARY SERVICES	\$714,405.17	\$740,854.57					
TCC	(\$58,002.98)	\$173,191.20					

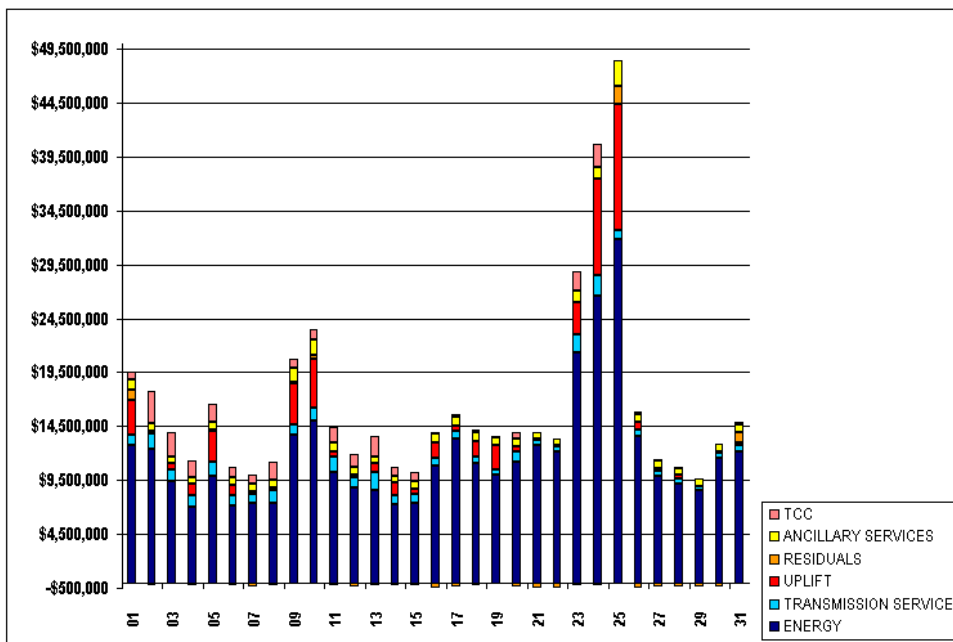


FOR DISCUSSION PURPOSES ONLY

SETTLEMENTS REPORT
 ATTACHMENT E: JULY 2001 CLOSEOUT SETTLEMENT
 OCTOBER 27, 2005

CLOSEOUT SETTLEMENT MARKET COSTS

	MONDAY	TUESDAY	WEDNESDAY	THURSDAY	FRIDAY	SATURDAY	SUNDAY
							1
ENERGY							\$12,776,967.20
TRANSMISSION SERVICE							\$910,212.17
UPLIFT							\$3,286,879.29
RESIDUALS							\$866,783.88
ANCILLARY SERVICES							\$1,003,381.81
TCC							\$664,071.68
	2	3	4	5	6	7	8
ENERGY	\$12,353,434.85	\$9,401,129.97	\$6,976,751.98	\$9,944,048.34	\$7,173,921.66	\$7,347,241.24	\$7,434,458.52
TRANSMISSION SERVICE	\$1,491,390.39	\$1,109,157.53	\$1,167,414.71	\$1,313,022.27	\$973,982.33	\$827,769.42	\$1,146,425.99
UPLIFT	\$228,276.97	\$550,873.87	\$1,005,166.77	\$2,762,840.14	\$944,545.84	\$319,927.21	\$232,593.40
RESIDUALS	(\$249,925.73)	(\$138,002.82)	(\$206,458.66)	\$126,915.58	(\$275,802.12)	(\$367,582.82)	(\$236,891.20)
ANCILLARY SERVICES	\$664,262.47	\$641,810.10	\$631,002.23	\$809,219.53	\$660,535.47	\$679,850.20	\$670,415.77
TCC	\$3,016,581.77	\$2,213,959.17	\$1,591,413.81	\$1,557,908.00	\$912,503.84	\$797,423.46	\$1,746,753.12
	9	10	11	12	13	14	15
ENERGY	\$13,702,667.14	\$15,043,243.35	\$10,228,350.95	\$8,782,524.70	\$8,564,528.03	\$7,229,698.68	\$7,359,090.95
TRANSMISSION SERVICE	\$989,946.18	\$1,114,543.38	\$1,483,002.36	\$1,018,050.81	\$1,729,816.15	\$822,357.84	\$873,696.18
UPLIFT	\$3,797,402.53	\$4,551,886.88	\$500,079.25	\$188,399.56	\$736,707.86	\$1,228,256.14	\$504,529.30
RESIDUALS	\$160,875.12	\$440,068.31	(\$288,547.15)	(\$373,132.53)	(\$310,994.14)	(\$316,967.11)	(\$289,920.66)
ANCILLARY SERVICES	\$1,223,220.53	\$1,369,420.41	\$824,994.17	\$707,445.49	\$676,627.24	\$619,745.76	\$656,265.55
TCC	\$849,461.24	\$1,010,865.15	\$1,387,519.28	\$1,163,933.35	\$1,877,174.48	\$785,080.79	\$854,234.44
	16	17	18	19	20	21	22
ENERGY	\$10,879,019.67	\$13,330,354.84	\$11,032,367.11	\$9,958,325.07	\$11,198,224.38	\$12,780,699.98	\$12,120,237.63
TRANSMISSION SERVICE	\$638,051.48	\$773,004.76	\$668,836.66	\$519,088.14	\$948,551.69	\$422,743.87	\$455,365.85
UPLIFT	\$1,523,604.90	\$454,264.78	\$1,447,389.47	\$2,289,977.34	\$492,488.39	\$109,044.72	\$149,598.43
RESIDUALS	(\$444,603.35)	(\$424,608.01)	(\$222,249.45)	(\$165,529.79)	(\$388,356.45)	(\$516,739.79)	(\$470,281.43)
ANCILLARY SERVICES	\$770,763.75	\$802,683.88	\$763,603.91	\$720,338.55	\$692,159.41	\$689,570.88	\$661,310.55
TCC	\$8,944.99	\$303,532.59	\$239,833.04	\$40,560.33	\$578,486.78	(\$106,373.32)	(\$40,358.24)
	23	24	25	26	27	28	29
ENERGY	\$21,298,873.78	\$26,614,358.36	\$31,876,817.32	\$13,570,380.73	\$9,896,387.30	\$9,195,244.56	\$8,558,355.56
TRANSMISSION SERVICE	\$1,660,597.94	\$1,911,178.39	\$819,266.75	\$662,305.99	\$519,484.24	\$405,949.95	\$364,599.25
UPLIFT	\$3,048,368.90	\$8,987,228.26	\$11,672,535.23	\$653,737.65	\$200,933.27	\$385,099.04	\$58,818.07
RESIDUALS	(\$299,438.25)	(\$214,187.25)	\$1,674,652.22	(\$456,508.79)	(\$403,908.44)	(\$334,529.32)	(\$419,006.32)
ANCILLARY SERVICES	\$1,027,903.26	\$1,016,364.93	\$2,365,856.51	\$763,636.64	\$695,269.29	\$628,073.13	\$612,998.18
TCC	\$1,840,778.28	\$2,156,394.58	(\$88,439.97)	\$172,126.29	\$101,933.11	\$60,415.07	\$9,885.90
	30	31					
ENERGY	\$11,589,313.13	\$12,099,179.90					
TRANSMISSION SERVICE	\$445,331.79	\$659,336.39					
UPLIFT	\$76,737.20	\$176,173.56					
RESIDUALS	(\$335,011.51)	\$1,016,707.84					
ANCILLARY SERVICES	\$714,386.94	\$740,685.95					
TCC	(\$58,002.98)	\$173,191.20					

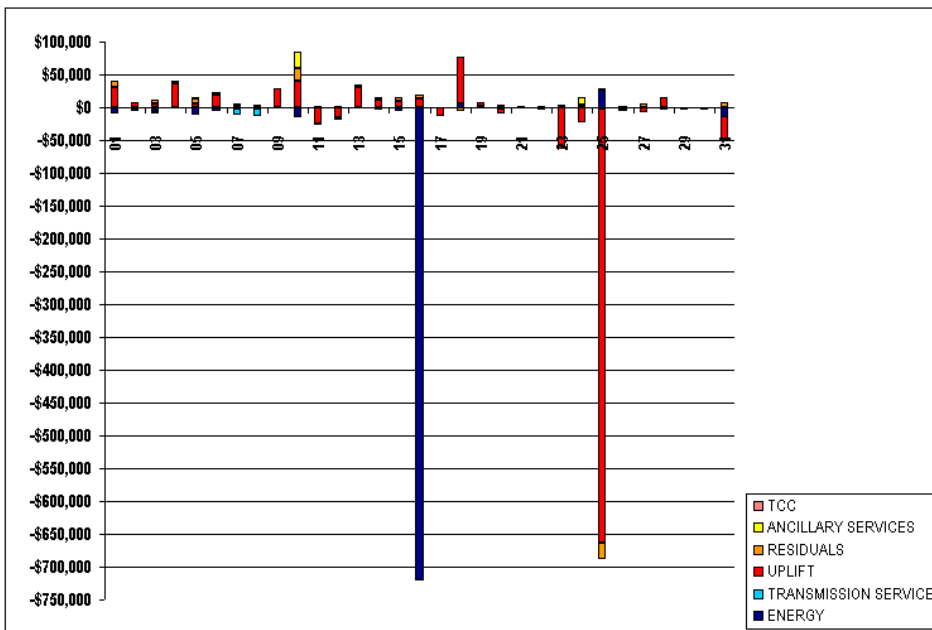


FOR DISCUSSION PURPOSES ONLY

SETTLEMENTS REPORT
ATTACHMENT E: JULY 2001 CLOSEOUT SETTLEMENT
OCTOBER 27, 2005

CLOSEOUT SETTLEMENT MARKET COSTS DELTA

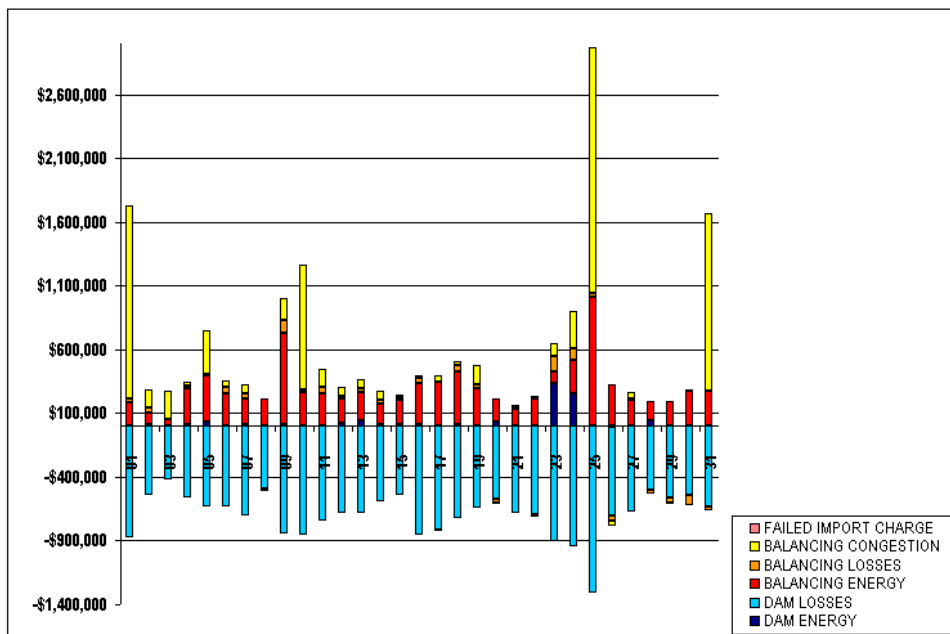
	MONDAY	TUESDAY	WEDNESDAY	THURSDAY	FRIDAY	SATURDAY	SUNDAY
							1
ENERGY							(\$7,550.21)
TRANSMISSION SERVICE							(\$1,149.94)
UPLIFT							\$30,621.19
RESIDUALS							\$8,935.94
ANCILLARY SERVICES							\$421.01
TCC							(\$25.56)
							2
ENERGY	(\$166.41)	(\$4,358.65)	(\$617.58)	(\$8,812.87)	(\$3,331.33)	(\$1,837.92)	(\$1,585.53)
TRANSMISSION SERVICE	(\$1,038.49)	(\$1,432.40)	(\$914.45)	(\$348.18)	(\$149.57)	(\$9,604.96)	(\$11,358.43)
UPLIFT	\$6,870.86	\$5,072.68	\$36,544.90	\$5,308.03	\$19,849.77	(\$324.68)	(\$862.57)
RESIDUALS	\$1,402.48	\$5,978.52	\$1,573.11	\$8,886.70	\$3,609.46	\$3,099.53	\$1,646.75
ANCILLARY SERVICES	\$189.06	\$422.66	\$155.64	\$202.78	\$1.76	\$292.23	(\$28.51)
TCC	(\$4,921.41)	(\$4,050.39)	\$1,768.74	\$1,182.09	(\$15.96)	\$2,250.21	\$2,935.50
							3
ENERGY	\$778.58	(\$13,888.66)	\$1,827.38	\$1,079.87	(\$932.08)	(\$2,748.41)	(\$4,041.31)
TRANSMISSION SERVICE	(\$220.30)	(\$448.15)	(\$129.97)	(\$636.48)	(\$64.10)	(\$5.23)	(\$716.58)
UPLIFT	\$27,839.35	\$40,613.80	(\$25,414.22)	(\$15,035.69)	\$31,376.60	\$12,396.09	\$10,342.92
RESIDUALS	\$583.13	\$18,913.80	(\$673.67)	(\$973.97)	\$2,615.58	\$2,936.59	\$4,699.21
ANCILLARY SERVICES	\$450.37	\$25,581.89	\$906.36	\$29.80	\$244.02	\$143.05	\$219.99
TCC	(\$697.38)	(\$651.87)	(\$50.76)	(\$2,601.99)	(\$139.68)	(\$138.51)	\$176.13
							4
ENERGY	(\$719,287.17)	\$811.70	\$6,316.38	\$1,471.50	(\$1,930.18)	\$2,204.46	(\$1,319.51)
TRANSMISSION SERVICE	(\$13.66)	(\$36.72)	(\$97.09)	(\$14.38)	(\$14.21)	(\$3.57)	(\$11.24)
UPLIFT	\$12,930.47	(\$13,172.68)	\$70,164.31	\$6,253.69	(\$6,739.69)	(\$689.64)	(\$1,215.19)
RESIDUALS	\$7,020.71	(\$443.73)	(\$5,116.84)	(\$917.62)	\$2,438.06	(\$2,178.51)	\$1,549.25
ANCILLARY SERVICES	\$181.61	\$64.15	\$735.89	\$150.01	\$454.09	(\$3.41)	\$218.36
TCC	\$0.00	\$0.00	(\$298.44)	\$0.00	\$0.00	\$0.00	\$0.00
							5
ENERGY	(\$828.12)	\$400.32	\$26,703.69	(\$960.04)	\$371.45	(\$1,179.40)	(\$1,200.75)
TRANSMISSION SERVICE	(\$15.28)	(\$16.12)	(\$1,282.81)	(\$40.65)	(\$39.66)	(\$42.00)	(\$45.98)
UPLIFT	(\$63,284.61)	(\$22,434.14)	(\$661,915.83)	(\$4,778.48)	(\$7,301.07)	\$14,956.30	\$185.66
RESIDUALS	\$1,273.42	\$3,919.68	(\$24,565.39)	\$1,449.85	\$4,563.05	\$1,203.50	\$774.58
ANCILLARY SERVICES	\$3,465.65	\$10,277.73	\$1,599.07	\$192.00	\$834.62	(\$162.60)	(\$157.73)
TCC	\$0.00	\$0.00	\$0.00	\$0.00	\$0.00	\$0.00	\$0.00
							6
ENERGY	\$229.76	(\$12,554.19)					
TRANSMISSION SERVICE	(\$41.23)	(\$112.76)					
UPLIFT	(\$3,417.70)	(\$38,786.48)					
RESIDUALS	(\$131.98)	\$8,566.12					
ANCILLARY SERVICES	(\$18.23)	(\$168.62)					
TCC	\$0.00	\$0.00					



SETTLEMENTS REPORT
 ATTACHMENT E: JULY 2001 CLOSEOUT SETTLEMENT
 OCTOBER 27, 2005

24-MONTH SETTLEMENT ADJUSTMENT MARKET RESIDUALS

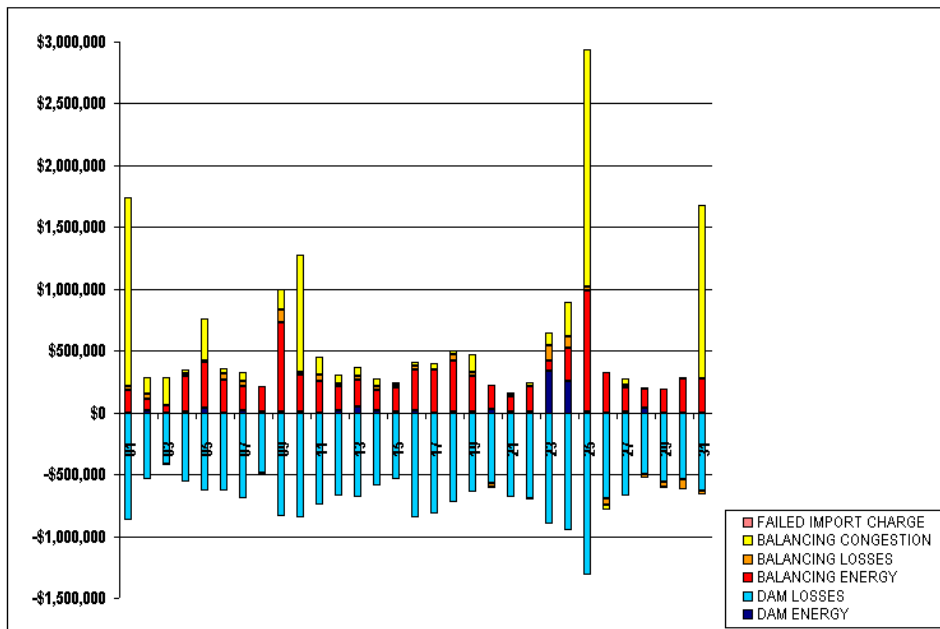
	MONDAY	TUESDAY	WEDNESDAY	THURSDAY	FRIDAY	SATURDAY	SUNDAY
							1
DAM ENERGY							\$655.87
DAM LOSSES							(\$874,004.47)
BALANCING ENERGY							\$180,191.02
BALANCING LOSSES							\$31,928.05
BALANCING CONGESTION							\$1,517,189.64
FAILED IMPORT CHARGE							\$0.00
	2	3	4	5	6	7	8
DAM ENERGY	\$17,068.38	(\$165.71)	\$11,552.38	\$24,951.88	\$1,104.94	\$12,297.69	\$2,942.08
DAM LOSSES	(\$538,725.42)	(\$417,020.11)	(\$558,933.78)	(\$636,434.37)	(\$634,110.96)	(\$699,265.82)	(\$486,950.33)
BALANCING ENERGY	\$91,642.78	\$56,502.92	\$279,769.73	\$363,623.04	\$258,520.21	\$199,094.37	\$208,299.75
BALANCING LOSSES	\$36,832.76	(\$6,651.64)	\$25,846.85	\$11,687.17	\$50,051.68	\$39,507.70	(\$2,383.97)
BALANCING CONGESTION	\$141,742.06	\$222,713.37	\$33,603.94	\$343,738.41	\$44,774.81	\$77,504.08	(\$19,724.01)
FAILED IMPORT CHARGE	\$0.00	\$0.00	\$0.00	\$0.00	\$0.00	\$0.00	\$0.00
	9	10	11	12	13	14	15
DAM ENERGY	\$10,381.75	\$4,502.88	\$685.82	\$17,961.80	\$44,072.11	\$13,038.00	\$11,029.38
DAM LOSSES	(\$841,689.97)	(\$854,440.23)	(\$741,513.25)	(\$679,333.60)	(\$684,543.35)	(\$592,407.39)	(\$538,440.71)
BALANCING ENERGY	\$716,438.82	\$257,361.96	\$257,669.12	\$191,907.16	\$222,125.65	\$164,391.07	\$190,162.75
BALANCING LOSSES	\$105,890.78	\$22,228.42	\$51,175.46	\$21,015.89	\$32,145.74	\$32,168.57	\$20,248.03
BALANCING CONGESTION	\$166,929.22	\$376,746.38	\$141,053.09	\$76,080.79	\$72,309.61	\$62,761.17	\$22,286.63
FAILED IMPORT CHARGE	\$0.00	\$0.00	\$0.00	\$0.00	\$0.00	\$0.00	\$0.00
	16	17	18	19	20	21	22
DAM ENERGY	\$12,099.31	\$1,555.43	\$9,272.42	\$6,472.95	\$31,796.55	\$4,698.15	\$7,309.58
DAM LOSSES	(\$850,061.98)	(\$814,607.16)	(\$727,008.23)	(\$641,861.75)	(\$575,766.77)	(\$683,457.43)	(\$693,893.97)
BALANCING ENERGY	\$327,287.21	\$343,426.26	\$417,461.35	\$288,270.91	\$186,043.75	\$132,856.55	\$208,628.90
BALANCING LOSSES	\$35,610.16	(\$5,239.14)	\$53,018.17	\$34,441.35	(\$22,009.14)	\$10,903.88	(\$16,081.61)
BALANCING CONGESTION	\$22,646.72	\$49,755.90	\$29,814.30	\$147,461.82	(\$11,055.50)	\$20,240.19	\$21,853.44
FAILED IMPORT CHARGE	\$0.00	\$0.00	\$0.00	\$0.00	\$0.00	\$0.00	\$0.00
	23	24	25	26	27	28	29
DAM ENERGY	\$332,362.25	\$257,857.97	\$4,776.13	(\$4,688.07)	\$4,291.43	\$40,530.02	\$1,321.31
DAM LOSSES	(\$903,484.95)	(\$949,203.17)	(\$1,211,756.53)	(\$894,887.37)	(\$678,338.95)	(\$503,525.56)	(\$561,629.11)
BALANCING ENERGY	\$92,961.94	\$261,296.43	\$1,012,026.80	\$328,335.80	\$197,024.90	\$154,684.25	\$190,912.54
BALANCING LOSSES	\$122,532.23	\$92,673.53	\$23,481.22	(\$48,338.28)	\$16,580.68	(\$28,900.33)	(\$36,730.99)
BALANCING CONGESTION	\$96,780.07	\$284,596.62	\$1,927,742.69	(\$39,444.21)	\$51,805.11	\$1,335.23	(\$13,698.15)
FAILED IMPORT CHARGE	\$0.00	\$0.00	\$0.00	\$0.00	\$0.00	\$0.00	\$0.00
	30	31					
DAM ENERGY	\$340.61	(\$1,720.38)					
DAM LOSSES	(\$540,972.24)	(\$628,569.67)					
BALANCING ENERGY	\$278,049.70	\$271,750.68					
BALANCING LOSSES	(\$78,880.33)	(\$35,403.86)					
BALANCING CONGESTION	\$6,280.97	\$1,400,853.41					
FAILED IMPORT CHARGE	\$0.00	\$0.00					



SETTLEMENTS REPORT
ATTACHMENT E: JULY 2001 CLOSEOUT SETTLEMENT
OCTOBER 27, 2005

CLOSEOUT SETTLEMENT MARKET RESIDUALS ANALYSIS

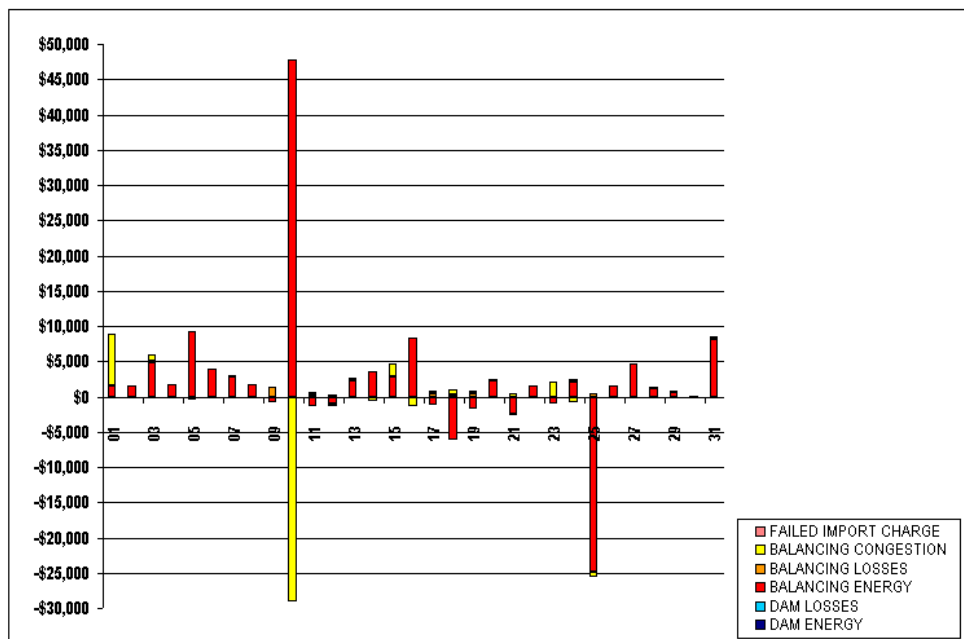
	MONDAY	TUESDAY	WEDNESDAY	THURSDAY	FRIDAY	SATURDAY	SUNDAY
							1
DAM ENERGY							\$655.87
DAM LOSSES							(\$674,004.47)
BALANCING ENERGY							\$181,752.64
BALANCING LOSSES							\$31,904.79
BALANCING CONGESTION							\$1,624,543.79
FAILED IMPORT CHARGE							\$0.00
	2	3	4	5	6	7	8
DAM ENERGY	\$17,068.38	(\$165.71)	\$11,552.38	\$34,951.88	\$1,104.94	\$12,297.69	\$2,942.08
DAM LOSSES	(\$538,764.18)	(\$417,020.11)	(\$558,933.78)	(\$636,434.37)	(\$634,110.96)	(\$699,265.82)	(\$486,960.33)
BALANCING ENERGY	\$93,167.20	\$61,433.89	\$281,567.44	\$372,857.16	\$262,395.98	\$201,900.02	\$210,097.70
BALANCING LOSSES	\$36,740.09	(\$6,624.23)	\$25,757.63	\$11,240.25	\$49,879.72	\$39,485.15	(\$2,401.73)
BALANCING CONGESTION	\$141,753.18	\$223,759.36	\$33,466.91	\$343,805.68	\$44,667.95	\$77,813.73	(\$19,864.96)
FAILED IMPORT CHARGE	\$0.00	\$0.00	\$0.00	\$0.00	\$0.00	\$0.00	\$0.00
	9	10	11	12	13	14	15
DAM ENERGY	\$10,381.75	\$4,502.88	\$685.82	\$17,961.80	\$44,072.11	\$13,038.00	\$11,029.38
DAM LOSSES	(\$441,639.97)	(\$354,467.65)	(\$741,513.25)	(\$679,333.60)	(\$684,543.35)	(\$592,407.39)	(\$538,440.71)
BALANCING ENERGY	\$715,600.42	\$305,182.17	\$256,331.99	\$190,950.96	\$224,501.67	\$168,008.63	\$192,960.25
BALANCING LOSSES	\$107,291.12	\$22,110.89	\$51,526.03	\$20,679.58	\$32,117.96	\$32,118.84	\$20,183.96
BALANCING CONGESTION	\$166,895.66	\$947,816.68	\$141,323.47	\$76,402.38	\$72,575.33	\$62,126.02	\$24,246.03
FAILED IMPORT CHARGE	\$0.00	\$0.00	\$0.00	\$0.00	\$0.00	\$0.00	\$0.00
	16	17	18	19	20	21	22
DAM ENERGY	\$12,099.31	\$1,555.43	\$9,272.42	\$6,472.95	\$31,796.55	\$4,698.15	\$7,309.58
DAM LOSSES	(\$850,061.98)	(\$314,675.56)	(\$727,008.23)	(\$641,861.75)	(\$575,766.77)	(\$683,457.43)	(\$693,893.97)
BALANCING ENERGY	\$335,607.41	\$342,270.33	\$411,396.22	\$286,523.80	\$188,335.06	\$130,427.89	\$210,217.44
BALANCING LOSSES	\$35,726.53	(\$4,839.54)	\$53,230.07	\$34,964.16	(\$22,063.06)	\$10,743.99	(\$16,138.88)
BALANCING CONGESTION	\$21,224.58	\$50,125.76	\$30,541.92	\$147,762.78	(\$10,866.85)	\$20,648.93	\$21,868.51
FAILED IMPORT CHARGE	\$0.00	\$0.00	\$0.00	\$0.00	\$0.00	\$0.00	\$0.00
	23	24	25	26	27	28	29
DAM ENERGY	\$332,362.22	\$257,857.93	\$4,776.13	(\$4,688.07)	\$4,291.43	\$40,530.02	\$1,321.31
DAM LOSSES	(\$903,627.54)	(\$949,339.13)	(\$1,311,883.19)	(\$694,887.37)	(\$678,338.95)	(\$503,525.56)	(\$561,629.11)
BALANCING ENERGY	\$92,159.71	\$263,413.14	\$987,321.82	\$329,859.48	\$201,632.15	\$155,960.03	\$191,644.89
BALANCING LOSSES	\$122,494.92	\$93,075.08	\$24,025.94	(\$48,522.17)	\$16,728.66	(\$28,994.24)	(\$36,820.63)
BALANCING CONGESTION	\$98,850.00	\$283,923.85	\$1,927,019.52	(\$39,347.82)	\$51,595.60	\$1,353.82	(\$13,573.84)
FAILED IMPORT CHARGE	\$0.00	\$0.00	\$0.00	\$0.00	\$0.00	\$0.00	\$0.00
	30	31					
DAM ENERGY	\$340.61	(\$1,720.38)					
DAM LOSSES	(\$540,972.24)	(\$628,577.61)					
BALANCING ENERGY	\$277,963.70	\$279,996.78					
BALANCING LOSSES	(\$78,961.58)	(\$35,116.36)					
BALANCING CONGESTION	\$6,288.92	\$1,400,850.21					
FAILED IMPORT CHARGE	\$0.00	\$0.00					



SETTLEMENTS REPORT
 ATTACHMENT E: JULY 2001 CLOSEOUT SETTLEMENT
 OCTOBER 27, 2005

CLOSEOUT SETTLEMENT MARKET RESIDUALS DELTA ANALYSIS

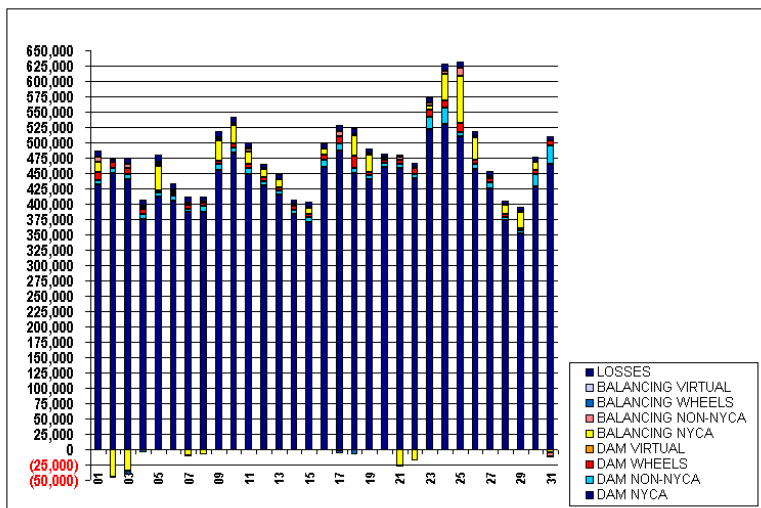
	MONDAY	TUESDAY	WEDNESDAY	THURSDAY	FRIDAY	SATURDAY	SUNDAY
DAM ENERGY							\$0.00
DAM LOSSES							\$0.00
BALANCING ENERGY							\$1,561.62
BALANCING LOSSES							(\$23.26)
BALANCING CONGESTION							\$7,354.15
FAILED IMPORT CHARGE							\$0.00
	2	3	4	5	6	7	8
DAM ENERGY	\$0.00	\$0.00	\$0.00	\$0.00	\$0.00	\$0.00	\$0.00
DAM LOSSES	(\$38.76)	\$0.00	\$0.00	\$0.00	\$0.00	\$0.00	\$0.00
BALANCING ENERGY	\$1,524.42	\$4,930.97	\$1,797.71	\$9,234.12	\$3,875.77	\$2,805.65	\$1,797.95
BALANCING LOSSES	(\$92.67)	\$27.41	(\$89.22)	(\$446.92)	(\$171.96)	(\$22.55)	(\$17.76)
BALANCING CONGESTION	\$11.12	\$1,045.99	(\$137.03)	\$67.27	(\$106.86)	\$309.65	(\$140.85)
FAILED IMPORT CHARGE	\$0.00	\$0.00	\$0.00	\$0.00	\$0.00	\$0.00	\$0.00
	9	10	11	12	13	14	15
DAM ENERGY	\$0.00	\$0.00	\$0.00	\$0.00	\$0.00	\$0.00	\$0.00
DAM LOSSES	\$0.00	(\$27.36)	\$0.00	\$0.00	\$0.00	\$0.00	\$0.00
BALANCING ENERGY	(\$838.40)	\$47,820.21	(\$1,337.13)	(\$966.20)	\$2,376.02	\$3,617.56	\$2,797.50
BALANCING LOSSES	\$1,400.34	(\$117.53)	\$350.57	(\$336.31)	(\$27.78)	(\$49.73)	(\$64.07)
BALANCING CONGESTION	(\$33.56)	(\$23,929.70)	\$270.38	\$321.59	\$265.72	(\$635.15)	\$1,959.40
FAILED IMPORT CHARGE	\$0.00	\$0.00	\$0.00	\$0.00	\$0.00	\$0.00	\$0.00
	16	17	18	19	20	21	22
DAM ENERGY	\$0.00	\$0.00	\$0.00	\$0.00	\$0.00	\$0.00	\$0.00
DAM LOSSES	\$0.00	(\$68.40)	\$0.00	\$0.00	\$0.00	\$0.00	\$0.00
BALANCING ENERGY	\$8,320.20	(\$1,165.93)	(\$6,065.13)	(\$1,747.11)	\$2,291.31	(\$2,428.66)	\$1,588.54
BALANCING LOSSES	\$116.37	\$399.60	\$211.90	\$522.81	(\$53.92)	(\$159.89)	(\$67.27)
BALANCING CONGESTION	(\$1,422.14)	\$369.86	\$727.62	\$300.96	\$188.65	\$408.74	\$15.07
FAILED IMPORT CHARGE	\$0.00	\$0.00	\$0.00	\$0.00	\$0.00	\$0.00	\$0.00
	23	24	25	26	27	28	29
DAM ENERGY	(\$0.03)	(\$0.04)	\$0.00	\$0.00	\$0.00	\$0.00	\$0.00
DAM LOSSES	(\$142.59)	(\$135.96)	(\$126.66)	\$0.00	\$0.00	\$0.00	\$0.00
BALANCING ENERGY	(\$802.23)	\$2,116.71	(\$24,704.98)	\$1,523.68	\$4,607.25	\$1,275.78	\$732.35
BALANCING LOSSES	(\$37.31)	\$401.55	\$544.72	(\$183.89)	\$147.98	(\$93.91)	(\$89.64)
BALANCING CONGESTION	\$2,069.93	(\$672.97)	(\$723.17)	\$96.39	(\$209.51)	\$18.59	\$124.31
FAILED IMPORT CHARGE	\$0.00	\$0.00	\$0.00	\$0.00	\$0.00	\$0.00	\$0.00
	30	31					
DAM ENERGY	\$0.00	\$0.00					
DAM LOSSES	\$0.00	(\$7.94)					
BALANCING ENERGY	(\$86.00)	\$8,246.10					
BALANCING LOSSES	(\$81.25)	\$287.50					
BALANCING CONGESTION	\$7.95	(\$9.20)					
FAILED IMPORT CHARGE	\$0.00	\$0.00					



SETTLEMENTS REPORT
ATTACHMENT E: JULY 2001 CLOSEOUT SETTLEMENT
OCTOBER 27, 2005

24-MONTH SETTLEMENT ADJUSTMENT MARKET WITHDRAWALS ANALYSIS

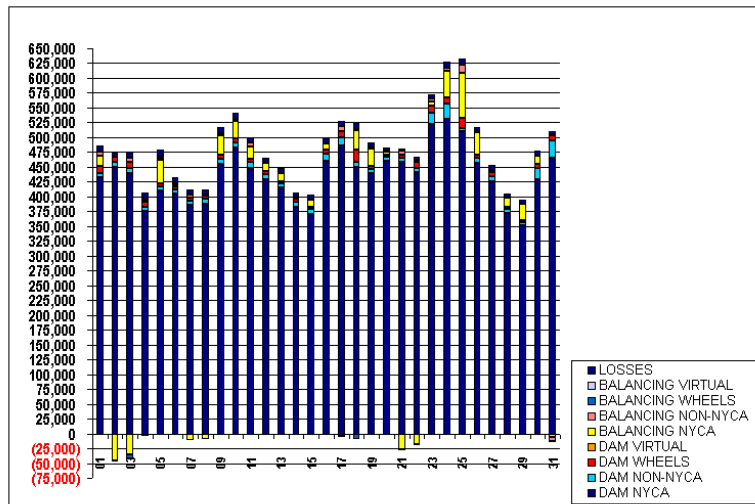
	MONDAY	TUESDAY	WEDNESDAY	THURSDAY	FRIDAY	SATURDAY	SUNDAY
DAM NYCA							1
DAM NON-NYCA							432,269
DAM WHEELS							6,550
DAM VIRTUAL							12,223
BALANCING NYCA							0
BALANCING NON-NYCA							15,944
BALANCING WHEELS							\$,255
BALANCING VIRTUAL							(865)
LOSSES							0
							10,417
	2	3	4	5	6	7	8
DAM NYCA	450,485	439,690	374,884	410,855	405,659	386,123	387,393
DAM NON-NYCA	8,428	7,946	7,623	6,745	6,884	6,293	8,700
DAM WHEELS	8,721	10,786	8,400	4,400	4,400	5,400	5,600
DAM VIRTUAL	0	0	0	0	0	0	0
BALANCING NYCA	(45,690)	(24,785)	3,488	39,135	3,553	(10,612)	(5,541)
BALANCING NON-NYCA	(249)	7,080	1,702	4,683	3,079	4,528	1,909
BALANCING WHEELS	(1,253)	(6,585)	(4,400)	2,459	(600)	(250)	(59)
BALANCING VIRTUAL	0	0	0	0	0	0	0
LOSSES	5,846	9,450	10,438	11,457	9,631	8,336	\$,255
	9	10	11	12	13	14	15
DAM NYCA	454,826	482,550	448,636	429,496	414,435	382,732	370,697
DAM NON-NYCA	9,535	9,480	9,105	7,686	7,320	7,491	7,429
DAM WHEELS	5,400	6,240	6,512	5,844	4,400	6,600	5,000
DAM VIRTUAL	0	0	0	0	0	0	0
BALANCING NYCA	33,112	29,683	20,183	13,449	13,027	2,326	10,693
BALANCING NON-NYCA	4,215	3,167	6,277	1,386	(260)	1,150	1,222
BALANCING WHEELS	622	587	600	(123)	0	(400)	0
BALANCING VIRTUAL	0	0	0	0	0	0	0
LOSSES	9,739	10,174	8,916	7,115	8,621	6,778	7,774
	16	17	18	19	20	21	22
DAM NYCA	460,323	486,595	450,566	439,852	459,329	458,408	441,050
DAM NON-NYCA	11,812	12,523	8,232	6,634	7,216	6,617	7,045
DAM WHEELS	7,486	11,587	20,000	4,366	4,366	6,000	10,300
DAM VIRTUAL	0	0	0	0	0	0	0
BALANCING NYCA	10,354	(1,946)	32,783	29,327	4,121	(27,122)	(18,195)
BALANCING NON-NYCA	(1,079)	8,069	1,584	3,302	1,669	5,522	2,068
BALANCING WHEELS	(800)	(4,695)	(9,028)	0	0	(1,400)	(700)
BALANCING VIRTUAL	0	0	0	0	0	0	0
LOSSES	9,134	9,347	10,297	7,229	5,292	3,425	6,607
	23	24	25	26	27	28	29
DAM NYCA	521,842	530,734	509,472	456,887	425,798	372,586	351,621
DAM NON-NYCA	19,903	25,290	6,685	7,976	8,486	5,682	5,156
DAM WHEELS	11,052	11,805	15,989	6,000	7,200	4,600	2,600
DAM VIRTUAL	0	0	0	0	0	0	0
BALANCING NYCA	7,015	44,190	76,986	37,969	1,504	15,912	27,964
BALANCING NON-NYCA	5,822	4,654	12,450	600	1,864	(477)	429
BALANCING WHEELS	(1,452)	(1,038)	14	588	(704)	(800)	0
BALANCING VIRTUAL	0	0	0	0	0	0	0
LOSSES	7,487	10,917	10,515	7,933	7,721	5,980	6,443
	30	31					
DAM NYCA	428,471	465,585					
DAM NON-NYCA	19,223	29,788					
DAM WHEELS	6,915	7,185					
DAM VIRTUAL	0	0					
BALANCING NYCA	14,332	(5,255)					
BALANCING NON-NYCA	(710)	(6,766)					
BALANCING WHEELS	(120)	(1,500)					
BALANCING VIRTUAL	0	0					
LOSSES	\$,250	6,811					



SETTLEMENTS REPORT
 ATTACHMENT E: JULY 2001 CLOSEOUT SETTLEMENT
 OCTOBER 27, 2005

CLOSEOUT SETTLEMENT MARKET WITHDRAWALS ANALYSIS

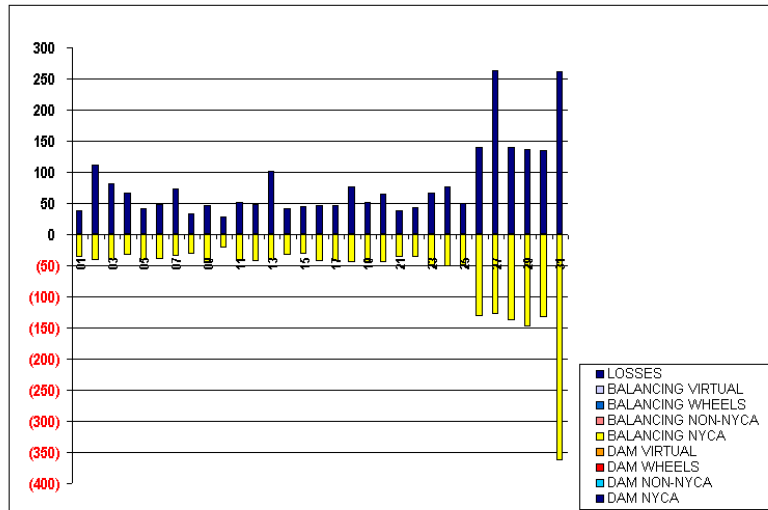
	MONDAY	TUESDAY	WEDNESDAY	THURSDAY	FRIDAY	SATURDAY	SUNDAY
DAM NYCA							1
DAM NON-NYCA							432,269
DAM WHEELS							6,550
DAM VIRTUAL							12,223
BALANCING NYCA							0
BALANCING NON-NYCA							16,907
BALANCING WHEELS							8,265
BALANCING VIRTUAL							(865)
LOSSES							0
							10,456
	2	3	4	5	6	7	8
DAM NYCA	450,485	439,690	374,884	410,855	405,669	386,123	387,393
DAM NON-NYCA	8,428	7,946	7,623	6,745	6,884	6,293	8,700
DAM WHEELS	8,721	10,786	8,400	4,400	4,400	5,400	5,600
DAM VIRTUAL	0	0	0	0	0	0	0
BALANCING NYCA	(45,732)	(34,826)	3,454	39,093	3,513	(10,647)	(5,574)
BALANCING NON-NYCA	(349)	7,080	1,702	4,683	3,079	4,528	1,909
BALANCING WHEELS	(1,353)	(6,686)	(4,400)	2,459	(800)	(250)	(69)
BALANCING VIRTUAL	0	0	0	0	0	0	0
LOSSES	5,967	9,631	10,555	11,499	9,679	9,010	8,289
	9	10	11	12	13	14	15
DAM NYCA	454,826	482,650	448,636	429,496	414,435	382,732	370,697
DAM NON-NYCA	9,535	9,480	9,105	7,686	7,320	7,491	7,429
DAM WHEELS	5,400	6,240	6,512	5,844	4,400	6,600	5,000
DAM VIRTUAL	0	0	0	0	0	0	0
BALANCING NYCA	33,065	29,661	20,139	13,406	12,985	2,292	10,662
BALANCING NON-NYCA	4,215	3,167	6,277	1,386	(260)	1,150	1,222
BALANCING WHEELS	622	587	600	(123)	0	(400)	0
BALANCING VIRTUAL	0	0	0	0	0	0	0
LOSSES	9,785	10,203	8,968	7,162	8,723	6,820	7,819
	16	17	18	19	20	21	22
DAM NYCA	460,323	486,595	450,566	439,852	459,329	458,408	441,050
DAM NON-NYCA	11,812	12,523	8,232	6,634	7,216	6,617	7,045
DAM WHEELS	7,486	11,587	20,000	4,366	4,366	6,000	10,300
DAM VIRTUAL	0	0	0	0	0	0	0
BALANCING NYCA	10,310	(1,989)	32,737	29,280	4,075	(27,159)	(18,231)
BALANCING NON-NYCA	(1,079)	8,069	1,584	3,302	1,669	5,522	2,068
BALANCING WHEELS	(800)	(4,695)	(9,023)	0	0	(1,400)	(700)
BALANCING VIRTUAL	0	0	0	0	0	0	0
LOSSES	9,132	9,394	10,273	7,280	5,457	3,463	6,650
	23	24	25	26	27	28	29
DAM NYCA	521,842	530,734	509,472	456,887	425,798	372,586	351,621
DAM NON-NYCA	19,903	25,290	6,685	7,976	8,486	5,682	5,156
DAM WHEELS	11,052	11,805	15,989	6,000	7,200	4,600	2,600
DAM VIRTUAL	0	0	0	0	0	0	0
BALANCING NYCA	6,966	44,138	76,935	37,838	1,376	15,774	27,816
BALANCING NON-NYCA	5,822	4,654	12,450	600	1,864	(477)	429
BALANCING WHEELS	(1,452)	(1,038)	14	588	(704)	(800)	0
BALANCING VIRTUAL	0	0	0	0	0	0	0
LOSSES	7,553	10,994	10,565	7,973	7,384	6,120	6,580
	30	31					
DAM NYCA	428,471	465,535					
DAM NON-NYCA	19,223	29,788					
DAM WHEELS	6,915	7,185					
DAM VIRTUAL	0	0					
BALANCING NYCA	14,199	(5,619)					
BALANCING NON-NYCA	(710)	(6,766)					
BALANCING WHEELS	(120)	(1,500)					
BALANCING VIRTUAL	0	0					
LOSSES	8,385	7,072					



SETTLEMENTS REPORT
 ATTACHMENT E: JULY 2001 CLOSEOUT SETTLEMENT
 OCTOBER 27, 2005

CLOSEOUT SETTLEMENT MARKET WITHDRAWALS DELTA ANALYSIS

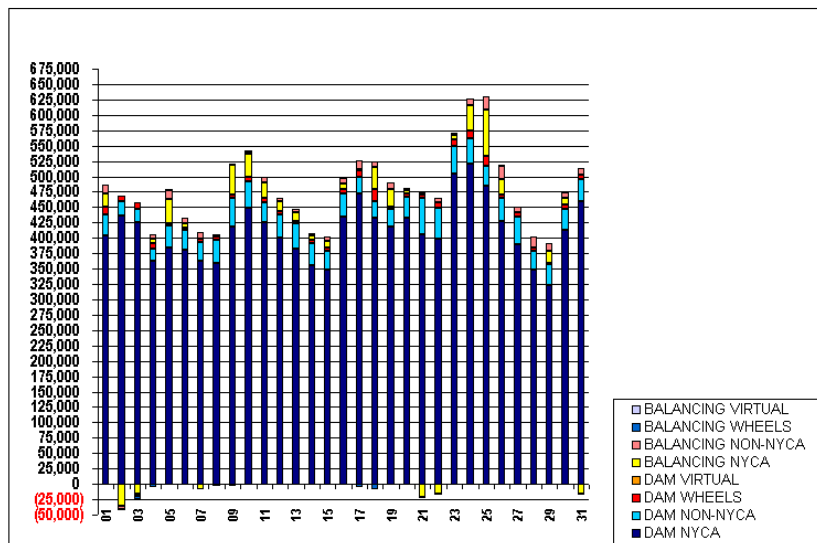
	MONDAY	TUESDAY	WEDNESDAY	THURSDAY	FRIDAY	SATURDAY	SUNDAY
							1
DAM NYCA							0
DAM NON-NYCA							0
DAM WHEELS							0
DAM VIRTUAL							0
BALANCING NYCA							(37)
BALANCING NON-NYCA							0
BALANCING WHEELS							0
BALANCING VIRTUAL							0
LOSSES							39
	2	3	4	5	6	7	8
DAM NYCA	0	0	0	0	0	0	0
DAM NON-NYCA	0	0	0	0	0	0	0
DAM WHEELS	0	0	0	0	0	0	0
DAM VIRTUAL	0	0	0	0	0	0	0
BALANCING NYCA	(42)	(41)	(34)	(42)	(40)	(35)	(22)
BALANCING NON-NYCA	0	0	0	0	0	0	0
BALANCING WHEELS	0	0	0	0	0	0	0
BALANCING VIRTUAL	0	0	0	0	0	0	0
LOSSES	111	82	67	41	48	74	34
	9	10	11	12	13	14	15
DAM NYCA	0	0	0	0	0	0	0
DAM NON-NYCA	0	0	0	0	0	0	0
DAM WHEELS	0	0	0	0	0	0	0
DAM VIRTUAL	0	0	0	0	0	0	0
BALANCING NYCA	(47)	(22)	(44)	(44)	(42)	(34)	(31)
BALANCING NON-NYCA	0	0	0	0	0	0	0
BALANCING WHEELS	0	0	0	0	0	0	0
BALANCING VIRTUAL	0	0	0	0	0	0	0
LOSSES	46	29	52	48	102	42	46
	16	17	18	19	20	21	22
DAM NYCA	0	0	0	0	0	0	0
DAM NON-NYCA	0	0	0	0	0	0	0
DAM WHEELS	0	0	0	0	0	0	0
DAM VIRTUAL	0	0	0	0	0	0	0
BALANCING NYCA	(44)	(43)	(45)	(46)	(46)	(37)	(36)
BALANCING NON-NYCA	0	0	0	0	0	0	0
BALANCING WHEELS	0	0	0	0	0	0	0
BALANCING VIRTUAL	0	0	0	0	0	0	0
LOSSES	47	47	76	52	65	38	43
	23	24	25	26	27	28	29
DAM NYCA	0	0	0	0	0	0	0
DAM NON-NYCA	0	0	0	0	0	0	0
DAM WHEELS	0	0	0	0	0	0	0
DAM VIRTUAL	0	0	0	0	0	0	0
BALANCING NYCA	(49)	(52)	(51)	(131)	(128)	(139)	(148)
BALANCING NON-NYCA	0	0	0	0	0	0	0
BALANCING WHEELS	0	0	0	0	0	0	0
BALANCING VIRTUAL	0	0	0	0	0	0	0
LOSSES	66	77	49	140	263	140	136
	30	31					
DAM NYCA	0	0					
DAM NON-NYCA	0	0					
DAM WHEELS	0	0					
DAM VIRTUAL	0	0					
BALANCING NYCA	(133)	(264)					
BALANCING NON-NYCA	0	0					
BALANCING WHEELS	0	0					
BALANCING VIRTUAL	0	0					
LOSSES	135	262					



SETTLEMENTS REPORT
ATTACHMENT E: JULY 2001 CLOSEOUT SETTLEMENT
OCTOBER 27, 2005

24-MONTH SETTLEMENT ADJUSTMENT MARKET SUPPLY ANALYSIS

	HONDAY	TUESDAY	WEDNESDAY	THURSDAY	FRIDAY	SATURDAY	SUNDAY
							1
DAM NYCA							404,730
DAM NON-NYCA							34,093
DAM WHEELS							12,223
DAM VIRTUAL							0
BALANCING NYCA							22,001
BALANCING NON-NYCA							13,361
BALANCING WHEELS							(865)
BALANCING VIRTUAL							0
							2
DAM NYCA	437,062	424,852	363,147	384,714	381,380	363,132	359,687
DAM NON-NYCA	22,406	22,773	19,953	34,657	31,209	29,667	36,528
DAM WHEELS	3,721	10,786	3,400	4,400	4,400	5,400	5,600
DAM VIRTUAL	0	0	0	0	0	0	0
BALANCING NYCA	(35,523)	(15,930)	7,585	39,596	6,204	(8,911)	(3,478)
BALANCING NON-NYCA	(6,865)	(3,070)	6,900	13,808	9,763	11,065	4,729
BALANCING WHEELS	(1,363)	(6,686)	(4,400)	2,459	(800)	(250)	(38)
BALANCING VIRTUAL	0	0	0	0	0	0	0
							3
DAM NYCA	418,709	448,577	424,956	400,223	382,473	365,910	348,306
DAM NON-NYCA	46,014	43,593	32,814	37,655	40,708	35,003	30,170
DAM WHEELS	5,400	6,240	6,512	5,844	4,400	6,600	5,000
DAM VIRTUAL	0	0	0	0	0	0	0
BALANCING NYCA	49,169	37,623	26,765	16,115	14,523	5,343	12,124
BALANCING NON-NYCA	(2,655)	4,962	7,682	4,786	5,185	3,470	6,788
BALANCING WHEELS	622	587	600	(128)	0	(400)	0
BALANCING VIRTUAL	0	0	0	0	0	0	0
							4
DAM NYCA	435,141	471,422	433,473	417,386	432,772	406,092	397,913
DAM NON-NYCA	37,308	27,743	25,573	28,763	34,434	59,099	50,399
DAM WHEELS	7,486	11,587	20,000	4,366	4,366	6,000	10,300
DAM VIRTUAL	0	0	0	0	0	0	0
BALANCING NYCA	9,051	1,022	36,121	28,759	6,644	(21,217)	(16,749)
BALANCING NON-NYCA	3,595	13,946	3,235	10,636	2,527	2,676	6,958
BALANCING WHEELS	(800)	(4,695)	(9,023)	0	0	(1,400)	(700)
BALANCING VIRTUAL	0	0	0	0	0	0	0
							5
DAM NYCA	505,386	521,549	484,344	427,094	390,209	348,944	322,725
DAM NON-NYCA	44,060	40,306	32,160	37,826	44,287	30,307	34,175
DAM WHEELS	11,052	11,805	15,989	6,000	7,200	4,600	2,600
DAM VIRTUAL	0	0	0	0	0	0	0
BALANCING NYCA	6,523	42,053	75,261	25,091	3	1,249	20,159
BALANCING NON-NYCA	4,745	10,671	22,806	21,947	9,875	17,434	11,755
BALANCING WHEELS	(1,452)	(1,038)	14	588	(704)	(800)	0
BALANCING VIRTUAL	0	0	0	0	0	0	0
							6
DAM NYCA	412,572	459,413					
DAM NON-NYCA	35,131	35,906					
DAM WHEELS	6,915	7,185					
DAM VIRTUAL	0	0					
BALANCING NYCA	9,844	(15,899)					
BALANCING NON-NYCA	10,420	10,924					
BALANCING WHEELS	(120)	(1,500)					
BALANCING VIRTUAL	0	0					

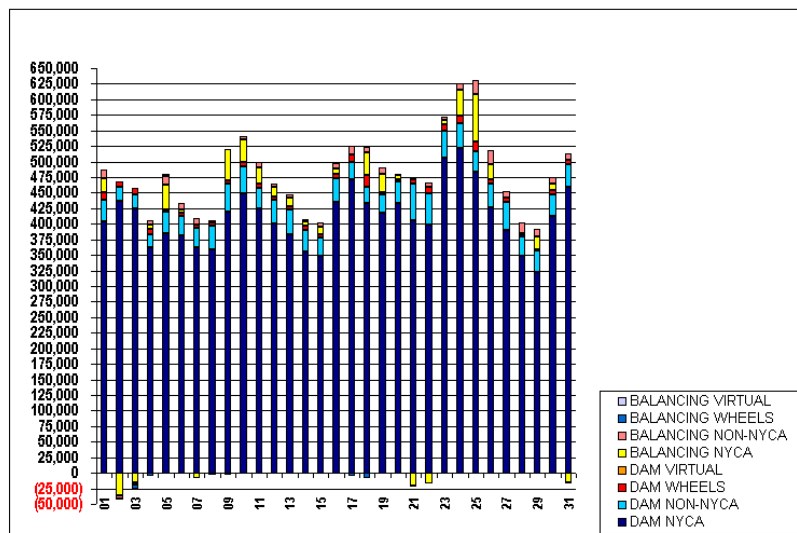


FOR DISCUSSION PURPOSES ONLY

SETTLEMENTS REPORT
 ATTACHMENT E: JULY 2001 CLOSEOUT SETTLEMENT
 OCTOBER 27, 2005

CLOSEOUT SETTLEMENT MARKET SUPPLY ANALYSIS

	MONDAY	TUESDAY	WEDNESDAY	THURSDAY	FRIDAY	SATURDAY	SUNDAY
							1
DAM NYCA							404,730
DAM NON-NYCA							34,093
DAM WHEELS							12,223
DAM VIRTUAL							0
BALANCING NYCA							22,003
BALANCING NON-NYCA							13,361
BALANCING WHEELS							(865)
BALANCING VIRTUAL							0
	2	3	4	5	6	7	8
DAM NYCA	437,052	424,852	363,147	384,714	381,380	363,132	359,687
DAM NON-NYCA	22,406	22,773	19,953	34,667	31,209	29,667	36,523
DAM WHEELS	3,721	10,786	3,400	4,400	4,400	5,400	5,600
DAM VIRTUAL	0	0	0	0	0	0	0
BALANCING NYCA	(35,454)	(15,839)	7,618	39,596	6,212	(8,871)	(3,476)
BALANCING NON-NYCA	(6,865)	(3,070)	6,900	13,808	9,763	11,055	4,729
BALANCING WHEELS	(1,363)	(6,686)	(4,400)	2,459	(800)	(260)	(38)
BALANCING VIRTUAL	0	0	0	0	0	0	0
	9	10	11	12	13	14	15
DAM NYCA	413,709	448,577	424,956	400,223	382,478	355,910	348,206
DAM NON-NYCA	46,014	43,693	32,814	37,555	40,708	35,003	30,170
DAM WHEELS	5,400	6,240	6,512	5,844	4,400	6,600	5,000
DAM VIRTUAL	0	0	0	0	0	0	0
BALANCING NYCA	49,168	37,634	26,773	16,119	14,582	5,851	12,139
BALANCING NON-NYCA	(2,555)	4,962	7,582	4,786	5,185	3,470	6,783
BALANCING WHEELS	622	587	600	(123)	0	(400)	0
BALANCING VIRTUAL	0	0	0	0	0	0	0
	16	17	18	19	20	21	22
DAM NYCA	435,141	471,422	433,478	417,386	432,772	406,092	397,918
DAM NON-NYCA	37,308	27,743	25,578	28,763	34,434	59,099	50,399
DAM WHEELS	7,436	11,537	20,000	4,366	4,366	6,000	10,300
DAM VIRTUAL	0	0	0	0	0	0	0
BALANCING NYCA	9,054	1,026	36,152	28,764	6,663	(21,216)	(16,742)
BALANCING NON-NYCA	3,695	13,946	8,235	10,636	2,527	2,676	6,958
BALANCING WHEELS	(800)	(4,695)	(9,023)	0	0	(1,400)	(700)
BALANCING VIRTUAL	0	0	0	0	0	0	0
	23	24	25	26	27	28	29
DAM NYCA	505,386	521,549	484,344	427,094	390,209	343,944	322,725
DAM NON-NYCA	44,060	40,306	32,160	37,326	44,287	30,307	34,175
DAM WHEELS	11,062	11,805	15,989	6,000	7,200	4,600	2,600
DAM VIRTUAL	0	0	0	0	0	0	0
BALANCING NYCA	6,544	42,084	75,260	25,100	137	1,250	20,147
BALANCING NON-NYCA	4,745	10,671	22,806	21,947	9,875	17,434	11,755
BALANCING WHEELS	(1,452)	(1,039)	14	533	(704)	(600)	0
BALANCING VIRTUAL	0	0	0	0	0	0	0
	30	31					
DAM NYCA	412,572	459,413					
DAM NON-NYCA	35,131	35,906					
DAM WHEELS	6,915	7,185					
DAM VIRTUAL	0	0					
BALANCING NYCA	9,846	(16,002)					
BALANCING NON-NYCA	10,420	10,924					
BALANCING WHEELS	(120)	(1,600)					
BALANCING VIRTUAL	0	0					



SETTLEMENTS REPORT
 ATTACHMENT E: JULY 2001 CLOSEOUT SETTLEMENT
 OCTOBER 27, 2005

CLOSEOUT SETTLEMENT MARKET SUPPLY DELTA ANALYSIS

	MONDAY	TUESDAY	WEDNESDAY	THURSDAY	FRIDAY	SATURDAY	SUNDAY
DAM NYCA							1
DAM NON-NYCA							0
DAM WHEELS							0
DAM VIRTUAL							0
BALANCING NYCA							2
BALANCING NON-NYCA							0
BALANCING WHEELS							0
BALANCING VIRTUAL							0
	2	3	4	5	6	7	8
DAM NYCA	0	0	0	0	0	0	0
DAM NON-NYCA	0	0	0	0	0	0	0
DAM WHEELS	0	0	0	0	0	0	0
DAM VIRTUAL	0	0	0	0	0	0	0
BALANCING NYCA	69	41	33	(1)	8	39	2
BALANCING NON-NYCA	0	0	0	0	0	0	0
BALANCING WHEELS	0	0	0	0	0	0	0
BALANCING VIRTUAL	0	0	0	0	0	0	0
	9	10	11	12	13	14	15
DAM NYCA	0	0	0	0	0	0	0
DAM NON-NYCA	0	0	0	0	0	0	0
DAM WHEELS	0	0	0	0	0	0	0
DAM VIRTUAL	0	0	0	0	0	0	0
BALANCING NYCA	(1)	6	8	4	60	9	15
BALANCING NON-NYCA	0	0	0	0	0	0	0
BALANCING WHEELS	0	0	0	0	0	0	0
BALANCING VIRTUAL	0	0	0	0	0	0	0
	16	17	18	19	20	21	22
DAM NYCA	0	0	0	0	0	0	0
DAM NON-NYCA	0	0	0	0	0	0	0
DAM WHEELS	0	0	0	0	0	0	0
DAM VIRTUAL	0	0	0	0	0	0	0
BALANCING NYCA	3	4	31	5	19	1	7
BALANCING NON-NYCA	0	0	0	0	0	0	0
BALANCING WHEELS	0	0	0	0	0	0	0
BALANCING VIRTUAL	0	0	0	0	0	0	0
	23	24	25	26	27	28	29
DAM NYCA	0	0	0	0	0	0	0
DAM NON-NYCA	0	0	0	0	0	0	0
DAM WHEELS	0	0	0	0	0	0	0
DAM VIRTUAL	0	0	0	0	0	0	0
BALANCING NYCA	17	25	(1)	9	135	1	(12)
BALANCING NON-NYCA	0	0	0	0	0	0	0
BALANCING WHEELS	0	0	0	0	0	0	0
BALANCING VIRTUAL	0	0	0	0	0	0	0
	30	31					
DAM NYCA	0	0					
DAM NON-NYCA	0	0					
DAM WHEELS	0	0					
DAM VIRTUAL	0	0					
BALANCING NYCA	2	(102)					
BALANCING NON-NYCA	0	0					
BALANCING WHEELS	0	0					
BALANCING VIRTUAL	0	0					

