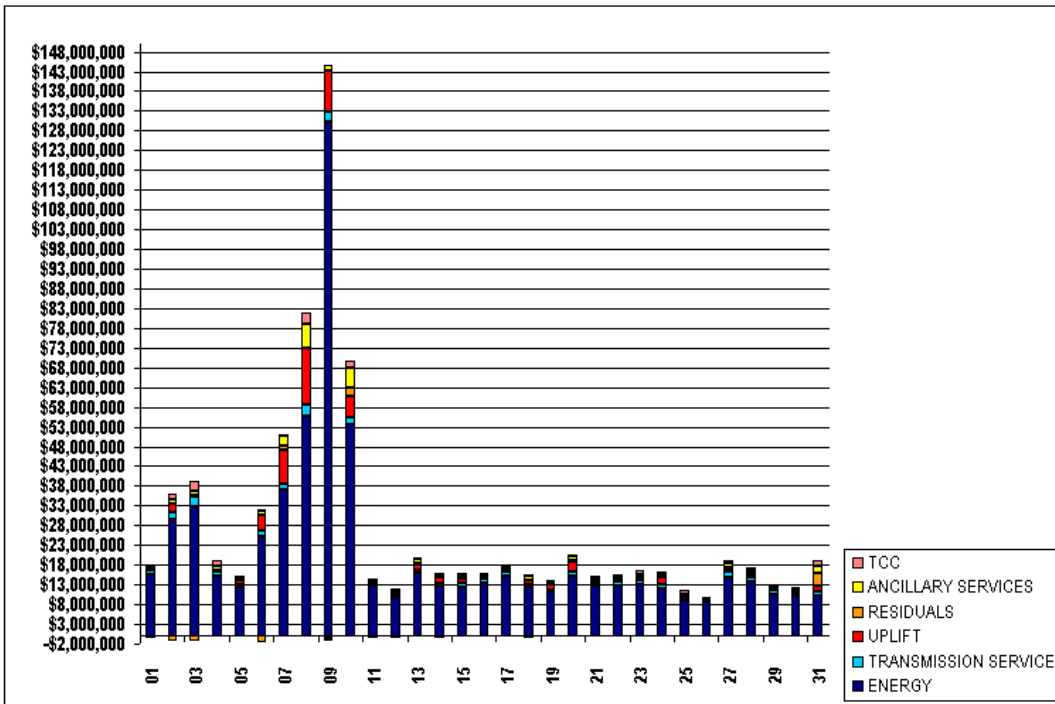


SETTLEMENTS REPORT
ATTACHMENT E: AUGUST 2001 CLOSEOUT SETTLEMENT
OCTOBER 27, 2005

24-MONTH SETTLEMENT ADJUSTMENT MARKET COSTS

	MONDAY	TUESDAY	WEDNESDAY	THURSDAY	FRIDAY	SATURDAY	SUNDAY
			1	2	3	4	5
ENERGY			\$15,702,268.10	\$29,489,220.77	\$32,829,319.70	\$15,107,825.26	\$12,486,024.09
TRANSMISSION SERVICE			\$861,883.16	\$1,806,628.60	\$2,434,065.51	\$1,151,494.15	\$689,280.84
UPLIFT			\$498,061.52	\$2,331,732.57	\$491,881.52	\$481,201.20	\$850,933.92
RESIDUALS			(\$456,069.86)	(\$1,173,917.73)	(\$1,455,026.08)	(\$250,204.50)	(\$350,154.38)
ANCILLARY SERVICES			\$794,734.78	\$982,442.69	\$1,113,503.91	\$1,031,448.30	\$783,504.41
TCC			\$370,190.29	\$1,292,047.21	\$2,462,776.50	\$1,344,804.40	\$344,368.00
	6	7	8	9	10	11	12
ENERGY	\$25,305,242.37	\$37,159,205.11	\$55,805,556.32	\$130,285,596.08	\$53,418,648.13	\$12,656,179.19	\$9,798,467.62
TRANSMISSION SERVICE	\$1,230,169.88	\$1,236,860.94	\$2,719,496.10	\$2,486,615.29	\$2,068,438.38	\$669,257.01	\$576,194.25
UPLIFT	\$4,191,961.83	\$8,855,041.77	\$14,342,746.97	\$10,520,808.23	\$5,146,229.26	\$284,779.66	\$682,594.88
RESIDUALS	(\$1,591,695.55)	\$770,550.83	\$125,303.88	(\$393,615.98)	\$2,361,686.34	(\$543,452.55)	(\$427,165.91)
ANCILLARY SERVICES	\$995,196.64	\$2,521,292.69	\$6,007,519.69	\$1,467,690.68	\$4,790,654.29	\$716,012.15	\$681,133.37
TCC	\$167,209.27	\$602,930.77	\$3,045,661.53	(\$963,442.96)	\$2,041,515.46	\$229,877.18	\$123,918.77
	13	14	15	16	17	18	19
ENERGY	\$15,768,006.93	\$12,528,100.38	\$12,387,362.12	\$13,511,838.58	\$15,351,689.19	\$12,404,532.41	\$11,104,770.87
TRANSMISSION SERVICE	\$919,451.33	\$749,466.22	\$1,021,302.36	\$866,428.88	\$1,002,564.18	\$707,835.42	\$575,076.32
UPLIFT	\$1,428,084.64	\$1,622,873.56	\$1,222,829.40	\$323,674.99	\$468,857.54	\$1,196,054.95	\$1,285,395.53
RESIDUALS	\$152,631.81	(\$406,636.70)	(\$370,083.32)	(\$378,719.32)	(\$383,102.22)	(\$524,260.93)	(\$352,354.38)
ANCILLARY SERVICES	\$1,134,229.27	\$758,891.99	\$741,474.52	\$806,478.25	\$805,797.69	\$722,960.54	\$696,365.85
TCC	\$381,878.67	\$175,542.49	\$667,287.12	\$299,808.71	\$573,970.37	\$411,698.40	\$323,899.13
	20	21	22	23	24	25	26
ENERGY	\$15,219,592.29	\$12,789,466.56	\$12,646,816.18	\$12,930,198.19	\$12,024,413.38	\$9,014,746.91	\$8,582,378.67
TRANSMISSION SERVICE	\$966,457.14	\$776,428.73	\$1,061,837.17	\$1,232,280.85	\$929,780.70	\$811,256.53	\$432,960.44
UPLIFT	\$2,519,445.80	\$533,747.07	\$356,251.93	\$549,328.35	\$1,929,471.17	\$213,198.51	\$96,908.17
RESIDUALS	\$475,546.04	(\$102,249.20)	(\$318,051.13)	(\$167,415.15)	(\$9,062.83)	(\$212,526.30)	(\$197,354.49)
ANCILLARY SERVICES	\$1,224,016.81	\$793,602.54	\$815,020.40	\$783,393.51	\$758,126.17	\$661,332.25	\$659,361.00
TCC	\$199,044.85	\$215,577.68	\$806,588.51	\$1,128,075.65	\$659,043.43	\$918,304.94	\$86,387.05
	27	28	29	30	31		
ENERGY	\$15,027,388.02	\$13,867,718.99	\$10,648,188.26	\$10,158,379.97	\$10,126,380.99		
TRANSMISSION SERVICE	\$1,108,630.91	\$871,936.32	\$923,306.56	\$579,409.27	\$1,230,652.87		
UPLIFT	\$847,658.77	\$765,762.43	\$177,214.56	\$546,579.32	\$1,422,097.19		
RESIDUALS	\$313,716.64	\$386,823.94	(\$139,046.79)	(\$159,565.80)	\$2,964,355.27		
ANCILLARY SERVICES	\$987,288.83	\$897,508.22	\$755,748.82	\$781,191.17	\$1,936,865.39		
TCC	\$898,258.85	\$442,078.13	\$688,068.05	\$104,115.07	\$1,385,448.90		

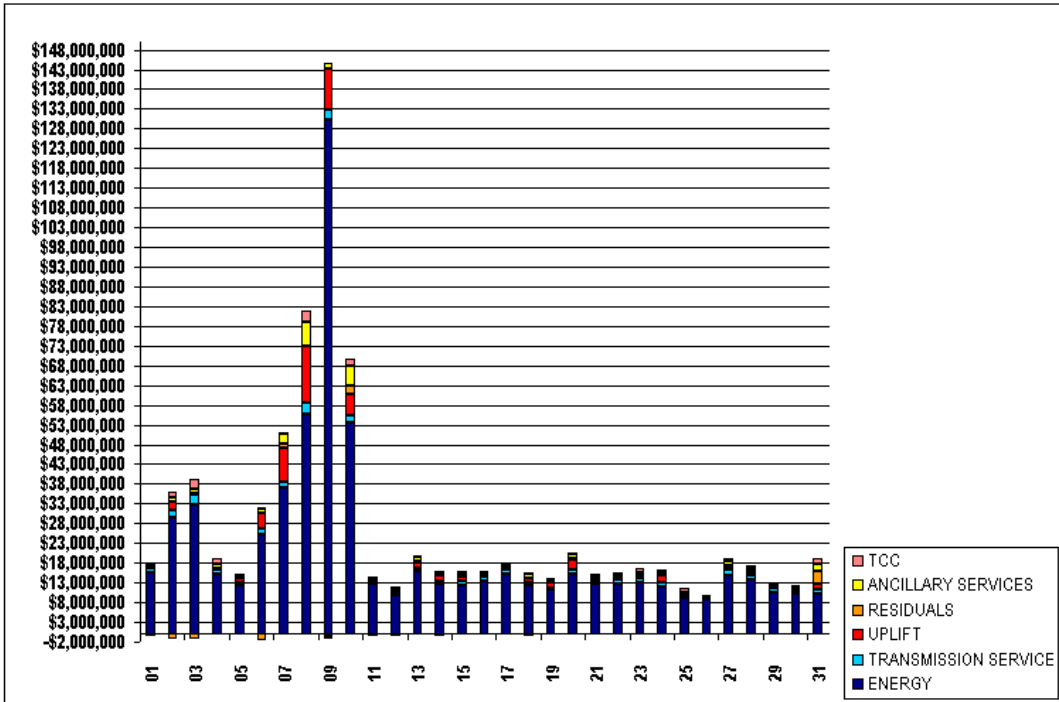


FOR DISCUSSION PURPOSES ONLY

SETTLEMENTS REPORT
ATTACHMENT E: AUGUST 2001 CLOSEOUT SETTLEMENT
OCTOBER 27, 2005

CLOSEOUT SETTLEMENT MARKET COSTS

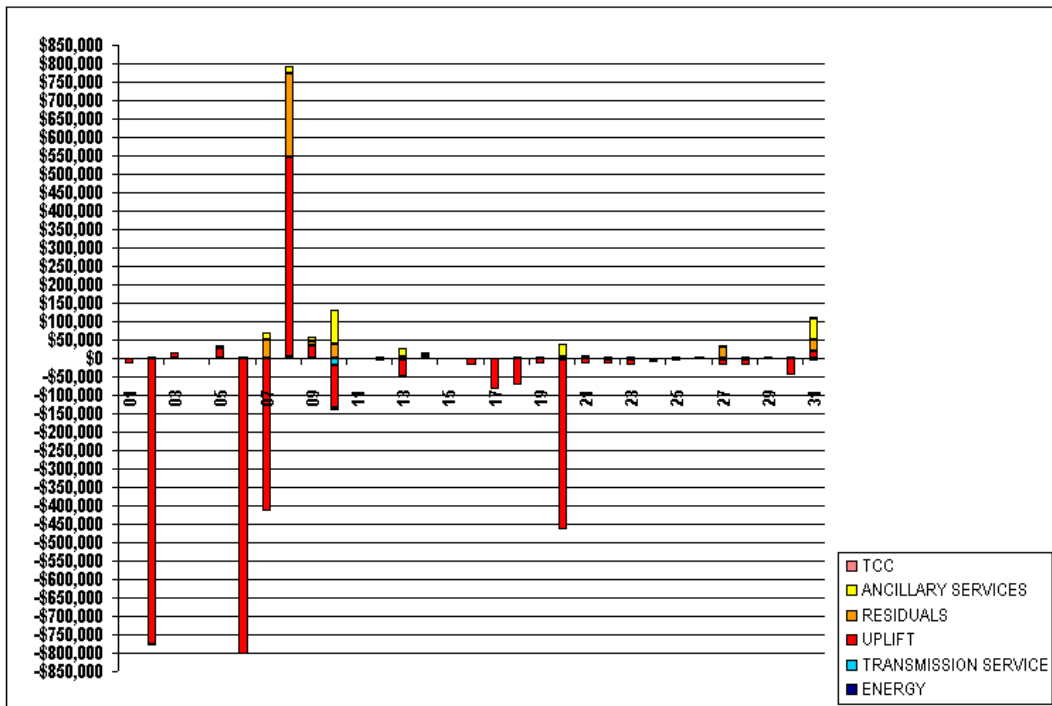
	MONDAY	TUESDAY	WEDNESDAY	THURSDAY	FRIDAY	SATURDAY	SUNDAY
			1	2	3	4	5
ENERGY			\$15,702,268.10	\$29,489,220.77	\$32,829,319.70	\$15,107,825.26	\$12,486,024.09
TRANSMISSION SERVICE			\$861,883.16	\$1,806,628.60	\$2,434,065.51	\$1,151,494.15	\$689,280.84
UPLIFT			\$498,061.52	\$2,331,732.57	\$491,881.52	\$481,201.20	\$850,933.92
RESIDUALS			(\$456,069.86)	(\$1,173,917.73)	(\$1,455,026.08)	(\$250,204.50)	(\$350,154.38)
ANCILLARY SERVICES			\$794,734.78	\$982,442.69	\$1,113,503.91	\$1,031,448.30	\$783,504.41
TCC			\$370,190.29	\$1,292,047.21	\$2,462,776.50	\$1,344,804.40	\$344,368.00
	6	7	8	9	10	11	12
ENERGY	\$25,305,242.37	\$37,159,205.11	\$55,805,556.32	\$130,285,596.08	\$53,418,648.13	\$12,656,179.19	\$9,798,467.62
TRANSMISSION SERVICE	\$1,230,169.88	\$1,236,860.94	\$2,719,496.10	\$2,486,615.29	\$2,068,438.38	\$669,257.01	\$576,194.25
UPLIFT	\$4,191,961.83	\$8,855,041.77	\$14,342,746.97	\$10,520,808.23	\$5,146,229.26	\$284,779.66	\$682,594.88
RESIDUALS	(\$1,591,695.55)	\$770,550.83	\$125,303.88	(\$393,615.98)	\$2,361,686.34	(\$543,452.55)	(\$427,165.91)
ANCILLARY SERVICES	\$995,196.64	\$2,521,292.69	\$6,007,519.69	\$1,467,690.68	\$4,790,654.29	\$716,012.15	\$681,133.37
TCC	\$167,209.27	\$602,930.77	\$3,045,661.53	(\$963,442.96)	\$2,041,515.46	\$229,877.18	\$123,918.77
	13	14	15	16	17	18	19
ENERGY	\$15,768,006.93	\$12,528,100.38	\$12,387,362.12	\$13,511,838.58	\$15,351,689.19	\$12,404,532.41	\$11,104,770.87
TRANSMISSION SERVICE	\$919,451.33	\$749,466.22	\$1,021,302.36	\$866,428.88	\$1,002,564.18	\$707,835.42	\$575,076.32
UPLIFT	\$1,428,084.64	\$1,622,873.56	\$1,222,829.40	\$323,674.99	\$468,857.54	\$1,196,054.95	\$1,285,395.53
RESIDUALS	\$152,631.81	(\$406,636.70)	(\$370,083.32)	(\$378,719.32)	(\$383,102.22)	(\$524,260.93)	(\$352,354.38)
ANCILLARY SERVICES	\$1,134,229.27	\$758,891.99	\$741,474.52	\$806,478.25	\$805,797.69	\$722,960.54	\$696,365.85
TCC	\$381,878.67	\$175,542.49	\$667,287.12	\$299,808.71	\$573,970.37	\$411,698.40	\$323,899.13
	20	21	22	23	24	25	26
ENERGY	\$15,219,592.29	\$12,789,466.56	\$12,646,816.18	\$12,930,198.19	\$12,024,413.38	\$9,014,746.91	\$8,582,378.67
TRANSMISSION SERVICE	\$966,457.14	\$776,428.73	\$1,061,837.17	\$1,232,280.85	\$929,780.70	\$811,256.53	\$432,960.44
UPLIFT	\$2,519,445.80	\$533,747.07	\$356,251.93	\$549,328.35	\$1,929,471.17	\$213,198.51	\$96,908.17
RESIDUALS	\$475,546.04	(\$102,249.20)	(\$318,051.13)	(\$167,415.15)	(\$9,062.83)	(\$212,526.30)	(\$197,354.49)
ANCILLARY SERVICES	\$1,224,016.81	\$793,602.54	\$815,020.40	\$783,393.51	\$758,126.17	\$661,332.25	\$659,361.00
TCC	\$199,044.85	\$215,577.68	\$806,588.51	\$1,128,075.65	\$659,043.43	\$918,304.94	\$86,387.05
	27	28	29	30	31		
ENERGY	\$15,027,388.02	\$13,867,718.99	\$10,648,188.26	\$10,158,379.97	\$10,126,380.99		
TRANSMISSION SERVICE	\$1,108,630.91	\$871,936.32	\$923,306.56	\$579,409.27	\$1,230,652.87		
UPLIFT	\$847,658.77	\$765,762.43	\$177,214.56	\$546,579.32	\$1,422,097.19		
RESIDUALS	\$313,716.64	\$386,823.94	(\$139,046.79)	(\$159,565.80)	\$2,964,355.27		
ANCILLARY SERVICES	\$987,288.83	\$897,508.22	\$755,748.82	\$781,191.17	\$1,936,865.39		
TCC	\$898,258.85	\$442,078.13	\$688,068.05	\$104,115.07	\$1,385,448.90		



SETTLEMENTS REPORT
ATTACHMENT E: AUGUST 2001 CLOSEOUT SETTLEMENT
OCTOBER 27, 2005

CLOSEOUT SETTLEMENT MARKET COSTS DELTA

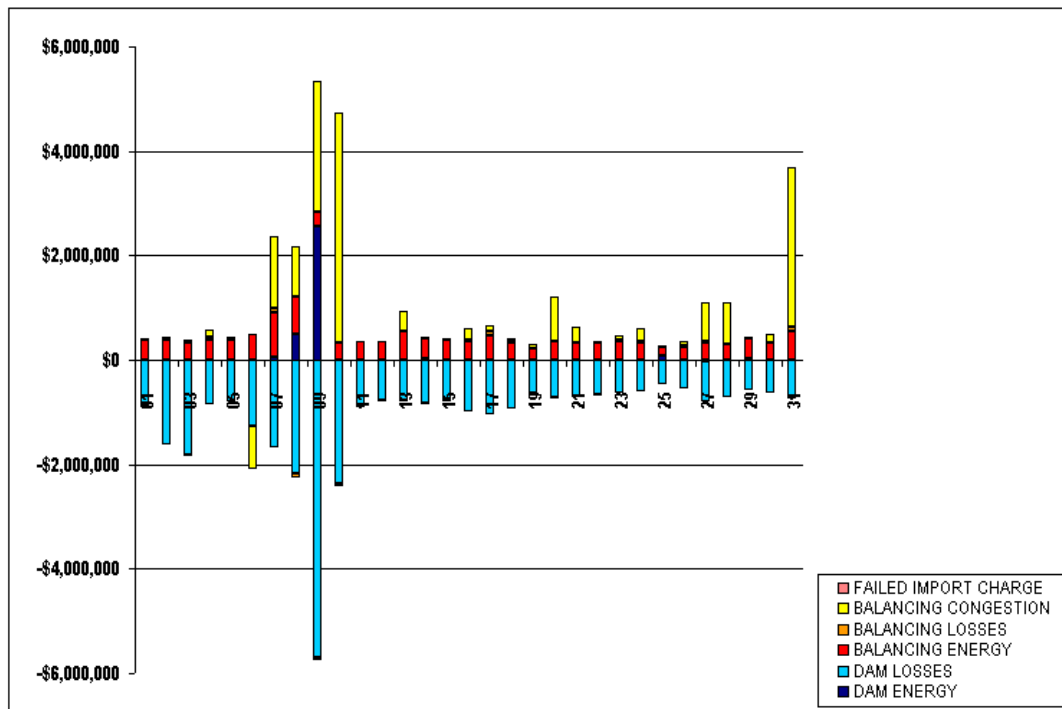
	MONDAY	TUESDAY	WEDNESDAY	THURSDAY	FRIDAY	SATURDAY	SUNDAY
			1	2	3	4	5
ENERGY			\$0.54	(\$0.20)	(\$0.91)	(\$0.19)	(\$68.51)
TRANSMISSION SERVICE			(\$56.76)	(\$320.32)	(\$906.15)	(\$50.62)	(\$49.65)
UPLIFT			(\$17,119.19)	(\$776,450.79)	\$15,705.84	(\$3,084.42)	\$25,393.08
RESIDUALS			\$155.19	\$2,107.26	(\$333.43)	(\$131.12)	\$2,860.40
ANCILLARY SERVICES			\$30.90	\$804.85	(\$136.11)	\$1,668.12	\$5,851.35
TCC			\$0.00	(\$2,849.55)	(\$3,259.29)	\$0.00	\$0.00
	6	7	8	9	10	11	12
ENERGY	(\$6.81)	(\$25.97)	(\$13.66)	(\$15.77)	(\$3.64)	\$0.07	(\$0.23)
TRANSMISSION SERVICE	\$250.71	\$1,511.38	\$3,829.67	\$74.83	(\$18,515.73)	(\$48.58)	(\$50.16)
UPLIFT	(\$805,358.06)	(\$416,344.09)	\$541,538.68	\$36,112.25	(\$117,985.23)	(\$2,679.31)	(\$6,371.81)
RESIDUALS	\$405.45	\$47,166.52	\$226,714.92	\$11,815.70	\$39,100.02	\$622.47	\$111.03
ANCILLARY SERVICES	\$2,993.62	\$18,801.10	\$19,520.16	\$8,708.68	\$91,507.81	\$24.88	\$2,490.23
TCC	(\$73.98)	(\$401.94)	(\$5,516.10)	\$0.00	(\$4,596.45)	(\$11.10)	\$0.00
	13	14	15	16	17	18	19
ENERGY	\$4.72	(\$0.83)	(\$0.33)	(\$0.11)	\$0.10	\$0.30	(\$1.03)
TRANSMISSION SERVICE	(\$3,025.31)	(\$45.49)	(\$54.09)	(\$55.60)	(\$282.39)	(\$54.23)	(\$224.34)
UPLIFT	(\$48,335.49)	\$7,485.53	(\$3,464.78)	(\$20,215.83)	(\$82,621.41)	(\$71,741.10)	(\$13,289.27)
RESIDUALS	\$5,404.45	\$1,012.77	\$941.44	\$647.71	\$1,143.11	\$582.07	\$91.72
ANCILLARY SERVICES	\$20,572.97	\$7,299.09	\$668.70	\$309.67	\$620.61	\$1,859.74	\$3,861.35
TCC	(\$10.35)	\$0.00	\$0.00	\$0.00	(\$1,267.47)	\$0.00	\$43.89
	20	21	22	23	24	25	26
ENERGY	(\$20.31)	(\$0.60)	\$0.65	(\$0.03)	\$0.22	\$0.35	(\$0.30)
TRANSMISSION SERVICE	(\$2,752.94)	(\$83.60)	(\$2,642.44)	(\$4,859.75)	(\$2,262.10)	(\$8,277.20)	(\$43.36)
UPLIFT	(\$464,187.88)	(\$16,163.44)	(\$11,218.24)	(\$15,613.48)	(\$10,052.77)	\$749.33	\$1,298.92
RESIDUALS	\$5,768.64	\$5,241.01	\$627.11	\$647.85	(\$784.55)	\$108.20	\$672.90
ANCILLARY SERVICES	\$33,236.53	\$2,787.01	\$1,115.19	\$1,637.80	\$484.52	\$970.13	\$2,648.88
TCC	\$0.00	\$0.00	\$662.91	\$1,246.02	\$572.28	\$2,508.00	\$0.00
	27	28	29	30	31		
ENERGY	\$1.01	\$2.31	\$0.00	\$0.59	\$0.42		
TRANSMISSION SERVICE	(\$4,834.48)	(\$3,026.22)	(\$4,138.32)	(\$134.43)	(\$8,636.22)		
UPLIFT	(\$12,771.54)	(\$15,398.89)	\$3,081.02	(\$46,037.43)	\$18,017.70		
RESIDUALS	\$31,705.35	\$2,397.59	\$360.87	\$1,425.20	\$30,864.86		
ANCILLARY SERVICES	\$2,980.19	\$1,435.03	\$348.46	\$1,391.56	\$60,203.28		
TCC	\$884.64	\$279.30	\$1,063.62	\$20.52	\$1,284.48		



SETTLEMENTS REPORT
ATTACHMENT E: AUGUST 2001 CLOSEOUT SETTLEMENT
OCTOBER 27, 2005

24-MONTH SETTLEMENT ADJUSTMENT MARKET RESIDUALS

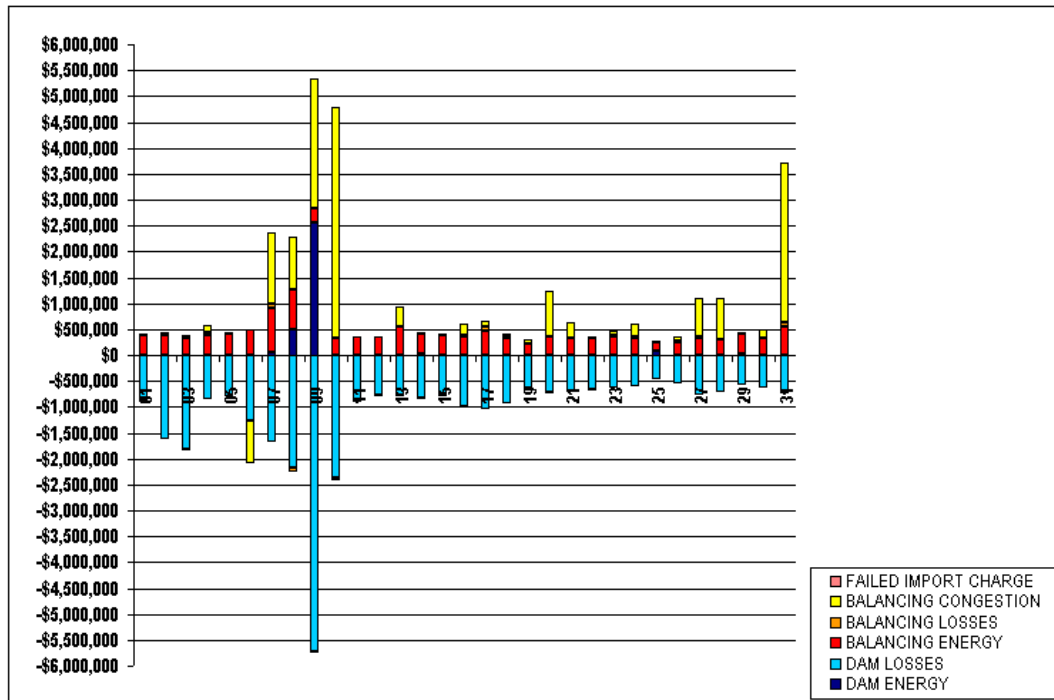
	MONDAY	TUESDAY	WEDNESDAY	THURSDAY	FRIDAY	SATURDAY	SUNDAY
			1	2	3	4	5
DAM ENERGY			\$4,947.59	\$2,231.64	\$11,889.33	\$6,851.44	(\$352.22)
DAM LOSSES			(\$854,393.62)	(\$1,633,776.00)	(\$1,823,049.22)	(\$841,858.63)	(\$798,473.70)
BALANCING ENERGY			\$369,446.28	\$395,213.57	\$323,090.15	\$388,936.75	\$398,591.48
BALANCING LOSSES			(\$25,359.95)	\$51,860.89	\$53,062.52	\$30,849.13	(\$2,165.27)
BALANCING CONGESTION			\$48,602.56	(\$1,952.65)	(\$20,970.93)	\$164,272.95	\$51,637.73
FAILED IMPORT CHARGE			\$0.00	\$0.00	\$0.00	\$0.00	\$0.00
	6	7	8	9	10	11	12
DAM ENERGY	\$422.49	\$56,532.81	\$494,908.89	\$2,546,787.75	(\$7,226.69)	\$13,303.03	(\$2,019.04)
DAM LOSSES	(\$1,259,423.55)	(\$1,684,475.18)	(\$2,181,744.38)	(\$5,709,378.45)	(\$2,365,325.37)	(\$880,747.15)	(\$756,231.81)
BALANCING ENERGY	\$498,528.25	\$839,065.74	\$704,299.25	\$294,914.75	\$324,380.14	\$341,004.88	\$357,324.00
BALANCING LOSSES	(\$2,064.66)	\$86,234.43	(\$74,979.12)	(\$43,794.17)	(\$45,319.16)	(\$21,295.16)	(\$28,287.80)
BALANCING CONGESTION	(\$834,893.48)	\$1,388,358.89	\$969,792.44	\$2,486,239.34	\$4,414,132.52	\$4,240.89	\$1,978.72
FAILED IMPORT CHARGE	\$0.00	\$0.00	\$0.00	\$0.00	\$0.00	\$0.00	\$0.00
	13	14	15	16	17	18	19
DAM ENERGY	\$4,170.00	\$19,948.90	(\$1,515.38)	(\$4,914.33)	(\$4,940.45)	\$2,037.85	(\$2,611.64)
DAM LOSSES	(\$777,257.09)	(\$813,702.00)	(\$754,190.33)	(\$973,395.83)	(\$1,028,742.23)	(\$941,916.69)	(\$631,774.24)
BALANCING ENERGY	\$544,033.75	\$399,115.71	\$372,032.10	\$367,892.65	\$455,555.15	\$323,723.31	\$208,821.25
BALANCING LOSSES	(\$22,235.37)	(\$29,170.04)	(\$40,414.47)	\$12,125.95	\$103,964.53	\$53,683.60	(\$18,258.84)
BALANCING CONGESTION	\$396,263.49	\$16,661.92	\$53,337.07	\$218,819.32	\$89,847.02	\$38,099.05	\$91,299.10
FAILED IMPORT CHARGE	\$0.00	\$0.00	\$0.00	\$0.00	\$0.00	\$0.00	\$0.00
	20	21	22	23	24	25	26
DAM ENERGY	\$2,803.60	\$7,854.26	(\$824.59)	\$5,169.32	\$45.46	\$69,112.41	\$104.25
DAM LOSSES	(\$713,371.53)	(\$707,424.58)	(\$661,501.28)	(\$640,550.59)	(\$605,906.73)	(\$466,462.87)	(\$548,846.10)
BALANCING ENERGY	\$345,910.66	\$327,433.22	\$333,698.55	\$365,067.81	\$332,369.30	\$188,026.71	\$255,661.16
BALANCING LOSSES	(\$39,954.40)	(\$20,825.26)	(\$13,656.56)	\$12,599.03	\$28,286.68	(\$13,588.50)	\$9,212.34
BALANCING CONGESTION	\$874,293.54	\$286,903.16	\$23,434.02	\$89,896.60	\$234,648.67	\$10,213.32	\$86,289.56
FAILED IMPORT CHARGE	\$0.00	\$0.00	\$0.00	\$0.00	\$0.00	\$0.00	\$0.00
	27	28	29	30	31		
DAM ENERGY	(\$38,073.50)	(\$329.16)	\$22,224.64	(\$26.62)	\$3,135.45		
DAM LOSSES	(\$749,506.31)	(\$705,155.56)	(\$579,606.56)	(\$643,798.11)	(\$741,105.49)		
BALANCING ENERGY	\$326,030.13	\$298,762.07	\$381,631.15	\$318,689.02	\$550,106.36		
BALANCING LOSSES	\$28,930.78	\$16,562.81	\$26,871.58	\$19,564.88	\$69,070.99		
BALANCING CONGESTION	\$740,891.32	\$773,316.75	\$8,984.20	\$145,462.82	\$3,070,745.94		
FAILED IMPORT CHARGE	\$0.00	\$0.00	\$0.00	\$0.00	\$0.00		



SETTLEMENTS REPORT
ATTACHMENT E: AUGUST 2001 CLOSEOUT SETTLEMENT
OCTOBER 27, 2005

CLOSEOUT SETTLEMENT MARKET RESIDUALS ANALYSIS

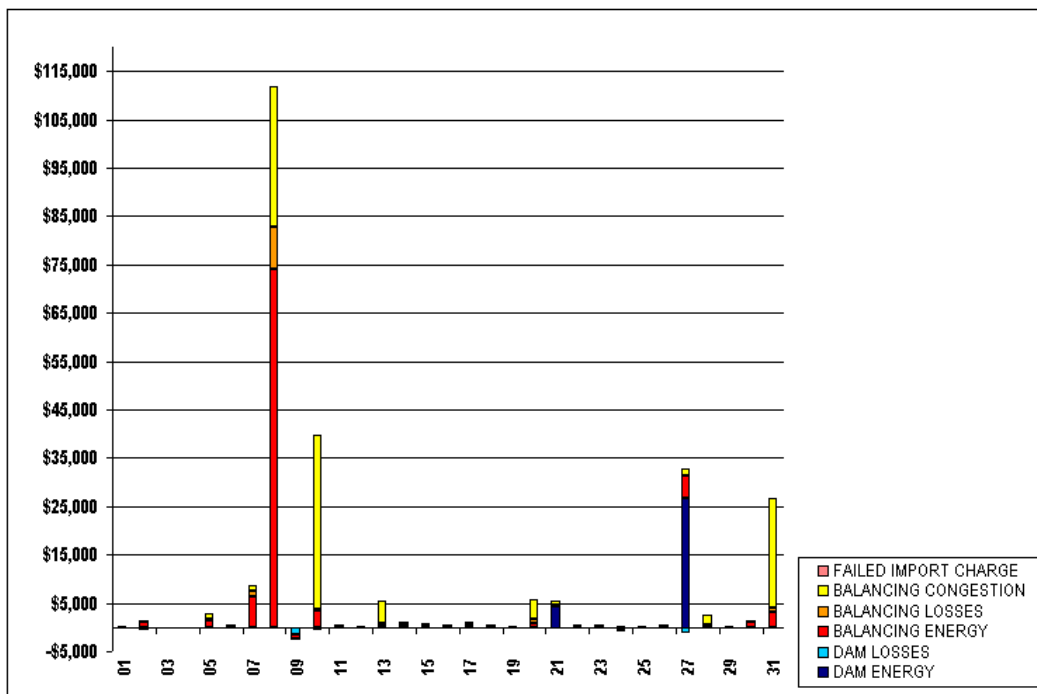
	MONDAY	TUESDAY	WEDNESDAY	THURSDAY	FRIDAY	SATURDAY	SUNDAY
			1	2	3	4	5
DAM ENERGY			\$4,947.59	\$2,231.64	\$11,889.32	\$6,851.45	(\$352.22)
DAM LOSSES			(\$654,526.62)	(\$1,634,058.67)	(\$1,823,464.90)	(\$841,960.22)	(\$798,525.50)
BALANCING ENERGY			\$369,506.09	\$396,401.38	\$323,138.99	\$388,934.68	\$399,893.96
BALANCING LOSSES			(\$25,137.34)	\$52,174.03	\$53,088.63	\$30,838.89	(\$1,814.35)
BALANCING CONGESTION			\$48,603.41	(\$2,433.01)	(\$20,967.68)	\$164,274.40	\$52,909.63
FAILED IMPORT CHARGE			\$0.00	\$0.00	\$0.00	\$0.00	\$0.00
	6	7	8	9	10	11	12
DAM ENERGY	\$422.49	\$56,532.81	\$494,908.84	\$2,546,787.76	(\$7,226.69)	\$13,303.03	(\$2,019.03)
DAM LOSSES	(\$1,259,658.13)	(\$1,684,721.86)	(\$2,182,184.50)	(\$5,711,026.58)	(\$2,365,883.05)	(\$880,747.15)	(\$756,231.81)
BALANCING ENERGY	\$498,723.12	\$845,410.42	\$778,428.49	\$294,078.01	\$327,783.96	\$341,417.95	\$357,418.37
BALANCING LOSSES	(\$1,648.89)	\$87,317.57	(\$66,221.65)	(\$43,858.92)	(\$45,103.48)	(\$21,262.56)	(\$28,278.90)
BALANCING CONGESTION	(\$834,930.07)	\$1,389,469.44	\$998,880.31	\$2,486,092.97	\$4,450,239.33	\$4,417.36	\$1,978.72
FAILED IMPORT CHARGE	\$0.00	\$0.00	\$0.00	\$0.00	\$0.00	\$0.00	\$0.00
	13	14	15	16	17	18	19
DAM ENERGY	\$4,170.00	\$19,948.90	(\$1,515.37)	(\$4,914.34)	(\$4,940.45)	\$2,037.85	(\$2,611.64)
DAM LOSSES	(\$777,257.09)	(\$813,702.00)	(\$754,190.32)	(\$973,341.08)	(\$1,028,742.23)	(\$941,916.67)	(\$631,774.23)
BALANCING ENERGY	\$544,672.36	\$399,705.58	\$372,508.52	\$368,257.28	\$456,029.97	\$323,784.43	\$208,837.12
BALANCING LOSSES	(\$21,925.57)	(\$28,754.96)	(\$39,964.18)	\$12,192.11	\$104,425.28	\$54,165.39	(\$18,185.82)
BALANCING CONGESTION	\$399,884.84	\$16,653.55	\$53,337.73	\$218,950.60	\$90,052.07	\$38,099.29	\$91,300.32
FAILED IMPORT CHARGE	\$0.00	\$0.00	\$0.00	\$0.00	\$0.00	\$0.00	\$0.00
	20	21	22	23	24	25	26
DAM ENERGY	\$2,803.60	\$12,118.99	(\$824.58)	\$5,169.32	\$45.46	\$69,112.41	\$104.25
DAM LOSSES	(\$713,371.53)	(\$707,206.04)	(\$661,501.27)	(\$640,432.02)	(\$605,906.73)	(\$466,462.86)	(\$548,846.10)
BALANCING ENERGY	\$346,774.08	\$327,284.75	\$333,977.46	\$365,508.69	\$331,815.92	\$188,126.90	\$256,291.56
BALANCING LOSSES	(\$39,217.81)	(\$20,625.39)	(\$13,595.18)	\$12,663.33	\$28,510.80	(\$13,581.94)	\$9,247.65
BALANCING CONGESTION	\$878,432.00	\$287,584.56	\$23,690.51	\$89,916.15	\$234,154.44	\$10,213.39	\$86,290.15
FAILED IMPORT CHARGE	\$0.00	\$0.00	\$0.00	\$0.00	\$0.00	\$0.00	\$0.00
	27	28	29	30	31		
DAM ENERGY	(\$11,259.67)	(\$329.16)	\$22,224.64	(\$26.62)	\$3,135.45		
DAM LOSSES	(\$750,611.09)	(\$705,189.40)	(\$579,606.57)	(\$643,798.11)	(\$741,121.23)		
BALANCING ENERGY	\$330,487.47	\$298,749.94	\$381,839.50	\$319,719.72	\$553,132.88		
BALANCING LOSSES	\$29,040.86	\$17,081.63	\$26,892.07	\$19,692.56	\$69,905.00		
BALANCING CONGESTION	\$742,301.02	\$775,221.54	\$8,973.80	\$145,682.97	\$3,093,542.19		
FAILED IMPORT CHARGE	\$0.00	\$0.00	\$0.00	\$0.00	\$0.00		



SETTLEMENTS REPORT
ATTACHMENT E: AUGUST 2001 CLOSEOUT SETTLEMENT
OCTOBER 27, 2005

CLOSEOUT SETTLEMENT MARKET RESIDUALS DELTA ANALYSIS

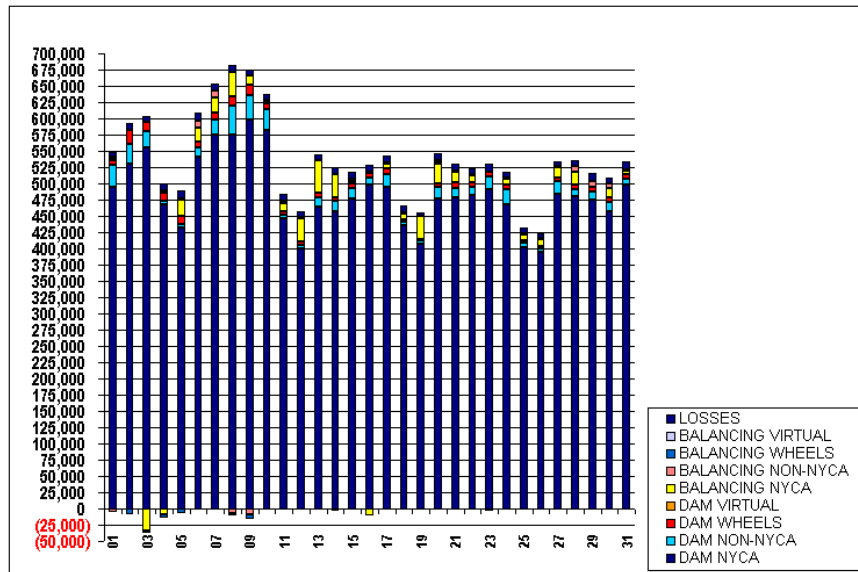
	MONDAY	TUESDAY	WEDNESDAY	THURSDAY	FRIDAY	SATURDAY	SUNDAY
			1	2	3	4	5
DAM ENERGY			\$0.00	\$0.00	(\$0.01)	\$0.01	\$0.00
DAM LOSSES			(\$133.00)	(\$282.67)	(\$415.68)	(\$121.59)	(\$51.80)
BALANCING ENERGY			\$59.81	\$1,187.81	\$48.84	(\$2.07)	\$1,302.48
BALANCING LOSSES			\$222.61	\$313.14	\$26.11	(\$10.24)	\$350.92
BALANCING CONGESTION			\$0.85	(\$480.36)	\$3.25	\$1.45	\$1,271.90
FAILED IMPORT CHARGE			\$0.00	\$0.00	\$0.00	\$0.00	\$0.00
	6	7	8	9	10	11	12
DAM ENERGY	\$0.00	\$0.00	(\$0.05)	\$0.01	\$0.00	\$0.00	\$0.01
DAM LOSSES	(\$234.58)	(\$246.68)	(\$440.12)	(\$1,648.13)	(\$557.68)	\$0.00	\$0.00
BALANCING ENERGY	\$194.87	\$6,344.68	\$74,129.24	(\$836.74)	\$3,403.82	\$413.07	\$94.37
BALANCING LOSSES	\$415.77	\$1,083.14	\$8,757.47	(\$64.75)	\$215.68	\$32.60	\$8.90
BALANCING CONGESTION	(\$36.59)	\$1,110.55	\$29,087.87	(\$146.37)	\$36,106.81	\$176.47	\$0.00
FAILED IMPORT CHARGE	\$0.00	\$0.00	\$0.00	\$0.00	\$0.00	\$0.00	\$0.00
	13	14	15	16	17	18	19
DAM ENERGY	\$0.00	\$0.00	\$0.01	(\$0.01)	\$0.00	\$0.00	\$0.00
DAM LOSSES	\$0.00	\$0.00	\$0.01	\$54.75	\$0.00	\$0.02	\$0.01
BALANCING ENERGY	\$638.61	\$589.87	\$476.42	\$364.63	\$474.82	\$61.12	\$15.87
BALANCING LOSSES	\$309.80	\$415.08	\$450.29	\$66.16	\$460.75	\$481.79	\$73.02
BALANCING CONGESTION	\$4,621.35	\$1.63	\$0.66	\$131.28	\$205.05	\$0.24	\$1.22
FAILED IMPORT CHARGE	\$0.00	\$0.00	\$0.00	\$0.00	\$0.00	\$0.00	\$0.00
	20	21	22	23	24	25	26
DAM ENERGY	\$0.00	\$4,264.73	\$0.01	\$0.00	\$0.00	\$0.00	\$0.00
DAM LOSSES	\$0.00	\$218.54	\$0.01	\$118.57	\$0.00	\$0.01	\$0.00
BALANCING ENERGY	\$863.42	(\$148.47)	\$278.91	\$440.88	(\$553.38)	\$100.19	\$630.40
BALANCING LOSSES	\$736.59	\$199.87	\$61.38	\$64.30	\$224.12	\$6.56	\$35.31
BALANCING CONGESTION	\$4,138.46	\$681.40	\$256.49	\$19.55	(\$494.23)	\$0.07	\$0.59
FAILED IMPORT CHARGE	\$0.00	\$0.00	\$0.00	\$0.00	\$0.00	\$0.00	\$0.00
	27	28	29	30	31		
DAM ENERGY	\$26,813.83	\$0.00	\$0.00	\$0.00	\$0.00		
DAM LOSSES	(\$1,104.78)	(\$33.84)	(\$0.01)	\$0.00	(\$15.74)		
BALANCING ENERGY	\$4,457.34	(\$12.13)	\$208.35	\$1,030.70	\$3,076.52		
BALANCING LOSSES	\$110.08	\$518.82	\$20.49	\$127.68	\$834.01		
BALANCING CONGESTION	\$1,409.70	\$1,904.79	(\$10.40)	\$220.15	\$22,796.25		
FAILED IMPORT CHARGE	\$0.00	\$0.00	\$0.00	\$0.00	\$0.00		



SETTLEMENTS REPORT
ATTACHMENT E: AUGUST 2001 CLOSEOUT SETTLEMENT
OCTOBER 27, 2005

24-MONTH SETTLEMENT ADJUSTMENT MARKET WITHDRAWALS ANALYSIS

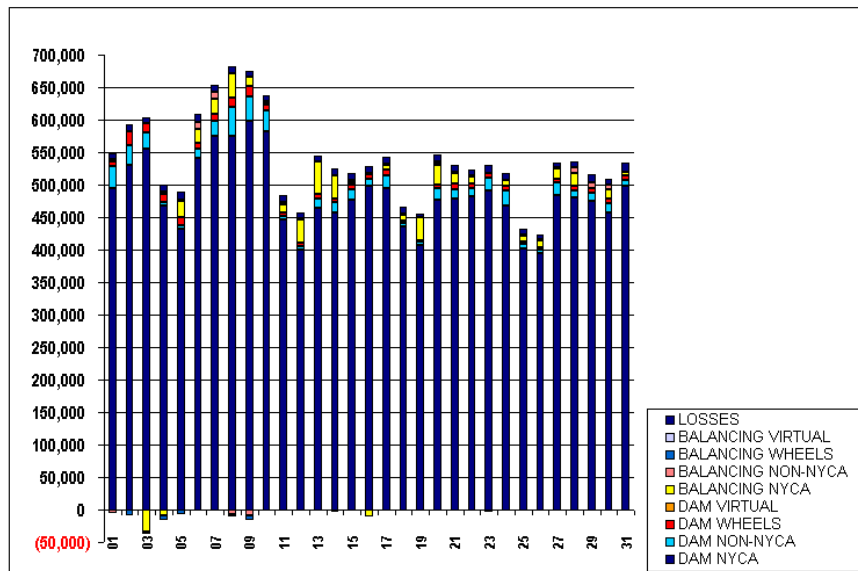
	HONDAY	TUESDAY	WEDNESDAY	THURSDAY	FRIDAY	SATURDAY	SUNDAY
			1	2	3	4	5
DAM NYCA			495,070	529,684	554,692	467,862	431,919
DAM NON-NYCA			32,856	31,562	26,054	5,125	5,378
DAM WHEELS			7,900	20,072	13,038	13,148	12,700
DAM VIRTUAL			0	0	0	0	0
BALANCING NYCA			3,820	(445)	(33,568)	(9,498)	24,373
BALANCING NON-NYCA			(5,877)	1,385	1,281	2,692	3,213
BALANCING WHEELS			626	(9,143)	(6,509)	(6,665)	(6,272)
BALANCING VIRTUAL			0	0	0	0	0
LOSSES			8,778	9,837	8,680	11,662	11,304
	6	7	8	9	10	11	12
DAM NYCA	540,817	574,340	575,722	598,007	582,283	445,900	399,291
DAM NON-NYCA	14,813	23,002	44,169	37,434	31,658	5,824	5,470
DAM WHEELS	8,222	11,287	14,498	16,543	9,897	5,607	6,280
DAM VIRTUAL	0	0	0	0	0	0	0
BALANCING NYCA	21,817	24,103	37,093	14,468	1,581	12,739	35,071
BALANCING NON-NYCA	10,453	10,533	(7,077)	(8,870)	3,488	3,482	1,541
BALANCING WHEELS	(173)	(937)	(3,865)	(6,716)	(1,128)	(1,306)	(1,000)
BALANCING VIRTUAL	0	0	0	0	0	0	0
LOSSES	12,016	10,705	9,972	8,618	7,893	10,359	10,335
	13	14	15	16	17	18	19
DAM NYCA	463,746	457,587	477,033	498,251	495,222	435,157	407,150
DAM NON-NYCA	15,714	15,693	16,534	10,879	18,570	5,558	5,692
DAM WHEELS	6,200	5,950	6,711	6,802	9,068	3,200	2,200
DAM VIRTUAL	0	0	0	0	0	0	0
BALANCING NYCA	49,904	34,684	3,975	(10,661)	6,856	9,680	35,196
BALANCING NON-NYCA	(863)	(2,586)	2,221	2,177	2,412	2,097	367
BALANCING WHEELS	(800)	(750)	(754)	(702)	177	(800)	0
BALANCING VIRTUAL	0	0	0	0	0	0	0
LOSSES	9,794	10,860	11,067	10,838	11,173	9,561	5,391
	20	21	22	23	24	25	26
DAM NYCA	477,279	477,947	482,373	490,739	468,095	402,541	394,101
DAM NON-NYCA	17,202	14,292	11,708	19,901	22,635	5,879	5,338
DAM WHEELS	5,002	9,357	3,160	6,944	6,960	4,200	4,700
DAM VIRTUAL	0	0	0	0	0	0	0
BALANCING NYCA	31,548	16,881	10,025	(3,514)	9,634	9,147	9,578
BALANCING NON-NYCA	3,509	1,224	1,856	1,110	735	1,724	2,603
BALANCING WHEELS	1,174	(842)	(450)	(1,444)	0	(1,200)	(800)
BALANCING VIRTUAL	0	0	0	0	0	0	0
LOSSES	10,020	10,755	9,365	11,328	8,973	8,112	7,511
	27	28	29	30	31		
DAM NYCA	484,593	480,444	475,200	457,414	497,839		
DAM NON-NYCA	18,457	11,433	12,441	14,425	9,119		
DAM WHEELS	6,116	6,566	6,210	6,618	8,047		
DAM VIRTUAL	0	0	0	0	0		
BALANCING NYCA	15,202	19,993	1,020	15,133	4,167		
BALANCING NON-NYCA	2,257	8,420	9,282	5,902	1,445		
BALANCING WHEELS	(300)	(603)	0	(506)	(1,499)		
BALANCING VIRTUAL	0	0	0	0	0		
LOSSES	6,670	8,027	11,407	9,968	13,543		



SETTLEMENTS REPORT
ATTACHMENT E: AUGUST 2001 CLOSEOUT SETTLEMENT
OCTOBER 27, 2005

CLOSEOUT SETTLEMENT MARKET WITHDRAWALS ANALYSIS

	HONDAY	TUESDAY	WEDNESDAY	THURSDAY	FRIDAY	SATURDAY	SUNDAY
			1	2	3	4	5
DAM NYCA			495,070	529,684	554,692	467,862	431,919
DAM NON-NYCA			32,856	31,562	26,054	5,125	5,378
DAM WHEELS			7,900	20,072	13,038	13,148	12,700
DAM VIRTUAL			0	0	0	0	0
BALANCING NYCA			3,662	(692)	(3,708)	(9,639)	24,235
BALANCING NON-NYCA			(5,877)	1,385	1,281	2,692	3,213
BALANCING WHEELS			626	(9,143)	(3,508)	(5,665)	(6,272)
BALANCING VIRTUAL			0	0	0	0	0
LOSSES			8,938	10,016	8,822	11,803	11,471
	6	7	8	9	10	11	12
DAM NYCA	540,817	574,340	575,722	598,007	582,283	445,900	399,291
DAM NON-NYCA	14,813	23,002	44,169	37,434	31,658	5,824	5,470
DAM WHEELS	8,222	11,287	14,498	16,543	9,897	5,607	6,280
DAM VIRTUAL	0	0	0	0	0	0	0
BALANCING NYCA	21,664	23,936	36,954	14,294	1,414	12,597	34,932
BALANCING NON-NYCA	10,453	10,533	(7,077)	(8,570)	3,488	3,482	1,541
BALANCING WHEELS	(173)	(937)	(3,855)	(6,716)	(1,128)	(1,306)	(1,000)
BALANCING VIRTUAL	0	0	0	0	0	0	0
LOSSES	12,176	10,909	10,297	8,780	8,162	10,514	10,477
	13	14	15	16	17	18	19
DAM NYCA	463,746	457,587	477,033	498,251	495,222	435,157	407,150
DAM NON-NYCA	15,714	15,693	16,534	10,879	18,570	5,558	5,692
DAM WHEELS	6,200	5,950	6,711	6,802	9,068	3,200	2,200
DAM VIRTUAL	0	0	0	0	0	0	0
BALANCING NYCA	49,759	34,541	3,817	(10,815)	6,713	9,529	35,048
BALANCING NON-NYCA	(863)	(2,586)	2,221	2,177	2,412	2,097	367
BALANCING WHEELS	(800)	(750)	(754)	(702)	177	(800)	0
BALANCING VIRTUAL	0	0	0	0	0	0	0
LOSSES	9,954	11,020	11,239	11,002	11,327	9,714	5,540
	20	21	22	23	24	25	26
DAM NYCA	477,279	477,947	482,373	490,739	468,095	402,541	394,101
DAM NON-NYCA	17,202	14,292	11,708	19,901	22,635	5,879	5,338
DAM WHEELS	5,002	9,357	8,160	6,944	6,960	4,200	4,700
DAM VIRTUAL	0	0	0	0	0	0	0
BALANCING NYCA	31,408	16,649	9,747	(3,648)	9,480	9,002	9,457
BALANCING NON-NYCA	3,509	1,224	1,856	1,110	735	1,724	2,603
BALANCING WHEELS	1,174	(842)	(450)	(144)	0	(1,200)	(800)
BALANCING VIRTUAL	0	0	0	0	0	0	0
LOSSES	10,181	11,093	9,650	11,473	9,112	8,260	7,647
	27	28	29	30	31		
DAM NYCA	484,593	480,444	475,200	457,414	497,839		
DAM NON-NYCA	18,457	11,433	12,441	14,425	9,119		
DAM WHEELS	6,116	6,566	6,210	6,618	8,047		
DAM VIRTUAL	0	0	0	0	0		
BALANCING NYCA	15,065	19,850	870	14,965	4,028		
BALANCING NON-NYCA	2,257	8,420	9,282	5,902	1,445		
BALANCING WHEELS	(300)	(603)	0	(506)	(1,499)		
BALANCING VIRTUAL	0	0	0	0	0		
LOSSES	7,431	8,170	11,564	10,147	13,750		

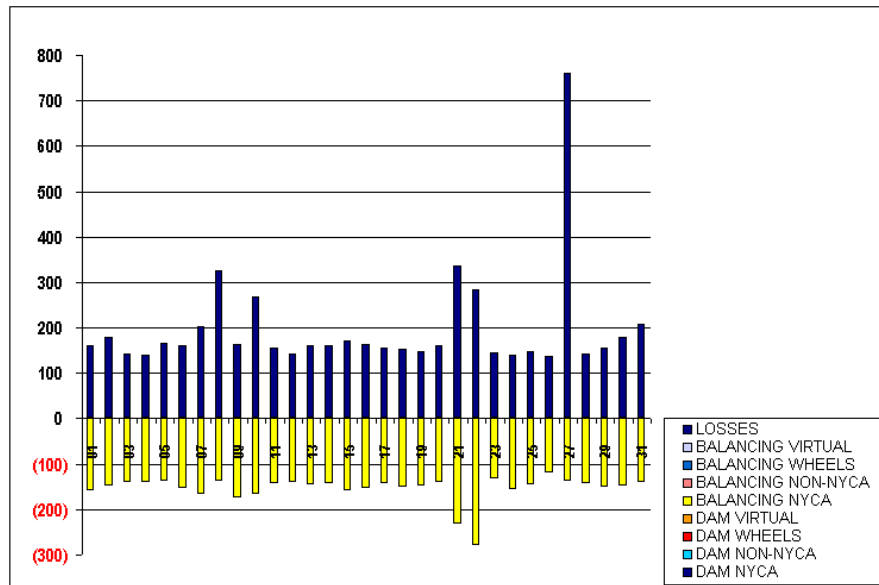


FOR DISCUSSION PURPOSES ONLY

SETTLEMENTS REPORT
 ATTACHMENT E: AUGUST 2001 CLOSEOUT SETTLEMENT
 OCTOBER 27, 2005

CLOSEOUT SETTLEMENT MARKET WITHDRAWALS DELTA ANALYSIS

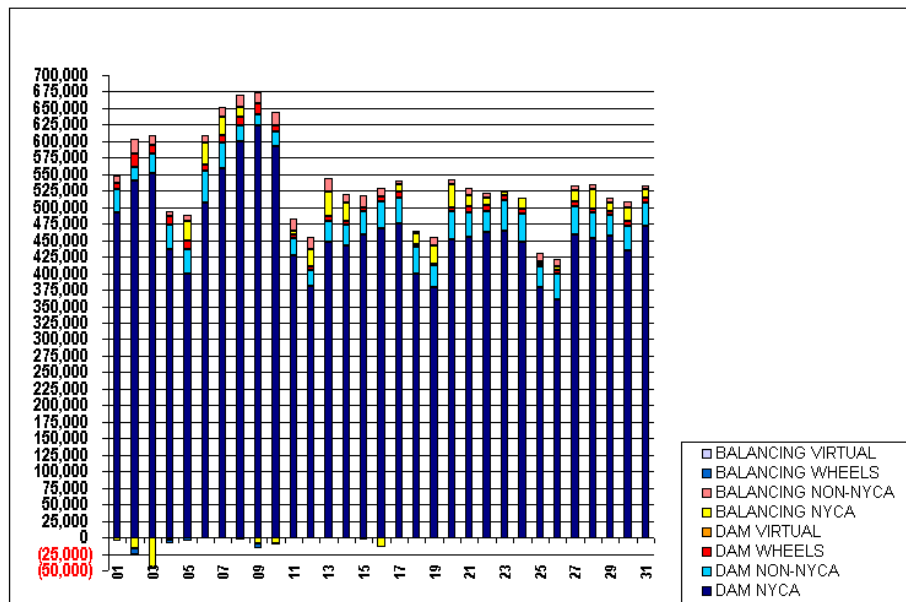
	MONDAY	TUESDAY	WEDNESDAY	THURSDAY	FRIDAY	SATURDAY	SUNDAY
			1	2	3	4	5
DAM NYCA			0	0	0	0	0
DAM NON-NYCA			0	0	0	0	0
DAM WHEELS			0	0	0	0	0
DAM VIRTUAL			0	0	0	0	0
BALANCING NYCA			(158)	(147)	(140)	(141)	(138)
BALANCING NON-NYCA			0	0	0	0	0
BALANCING WHEELS			0	0	0	0	0
BALANCING VIRTUAL			0	0	0	0	0
LOSSES			160	180	141	141	166
	6	7	8	9	10	11	12
DAM NYCA	0	0	0	0	0	0	0
DAM NON-NYCA	0	0	0	0	0	0	0
DAM WHEELS	0	0	0	0	0	0	0
DAM VIRTUAL	0	0	0	0	0	0	0
BALANCING NYCA	(153)	(167)	(138)	(174)	(168)	(142)	(139)
BALANCING NON-NYCA	0	0	0	0	0	0	0
BALANCING WHEELS	0	0	0	0	0	0	0
BALANCING VIRTUAL	0	0	0	0	0	0	0
LOSSES	161	204	325	163	269	155	142
	13	14	15	16	17	18	19
DAM NYCA	0	0	0	0	0	0	0
DAM NON-NYCA	0	0	0	0	0	0	0
DAM WHEELS	0	0	0	0	0	0	0
DAM VIRTUAL	0	0	0	0	0	0	0
BALANCING NYCA	(145)	(143)	(168)	(154)	(142)	(151)	(149)
BALANCING NON-NYCA	0	0	0	0	0	0	0
BALANCING WHEELS	0	0	0	0	0	0	0
BALANCING VIRTUAL	0	0	0	0	0	0	0
LOSSES	160	160	173	164	155	153	149
	20	21	22	23	24	25	26
DAM NYCA	0	0	0	0	0	0	0
DAM NON-NYCA	0	0	0	0	0	0	0
DAM WHEELS	0	0	0	0	0	0	0
DAM VIRTUAL	0	0	0	0	0	0	0
BALANCING NYCA	(141)	(232)	(278)	(133)	(155)	(145)	(120)
BALANCING NON-NYCA	0	0	0	0	0	0	0
BALANCING WHEELS	0	0	0	0	0	0	0
BALANCING VIRTUAL	0	0	0	0	0	0	0
LOSSES	161	338	285	144	139	148	136
	27	28	29	30	31		
DAM NYCA	0	0	0	0	0		
DAM NON-NYCA	0	0	0	0	0		
DAM WHEELS	0	0	0	0	0		
DAM VIRTUAL	0	0	0	0	0		
BALANCING NYCA	(137)	(143)	(149)	(148)	(140)		
BALANCING NON-NYCA	0	0	0	0	0		
BALANCING WHEELS	0	0	0	0	0		
BALANCING VIRTUAL	0	0	0	0	0		
LOSSES	761	143	157	179	207		



SETTLEMENTS REPORT
ATTACHMENT E: AUGUST 2001 CLOSEOUT SETTLEMENT
OCTOBER 27, 2005

24-MONTH SETTLEMENT ADJUSTMENT MARKET SUPPLY ANALYSIS

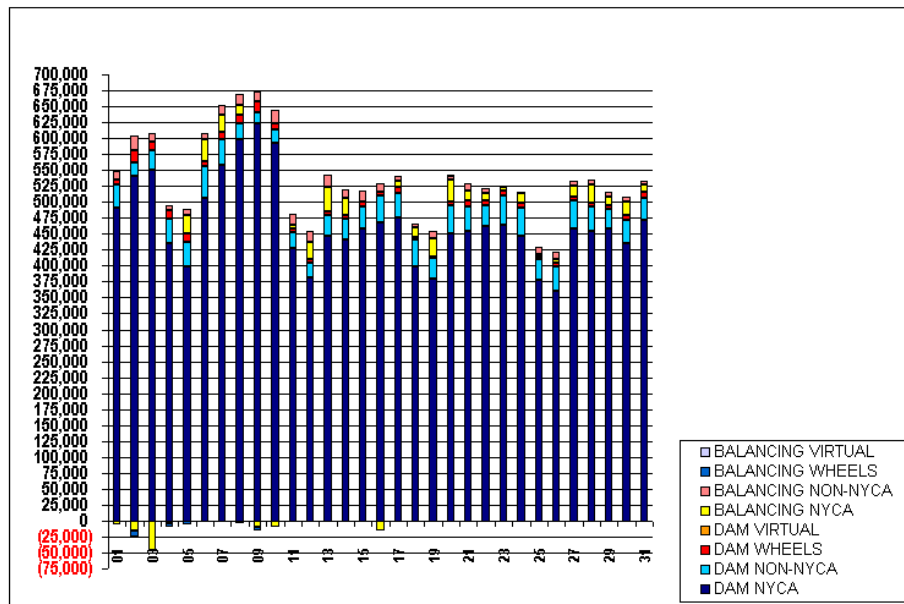
	MONDAY	TUESDAY	WEDNESDAY	THURSDAY	FRIDAY	SATURDAY	SUNDAY
			1	2	3	4	5
DAM NYCA			491,730	540,483	561,029	436,636	398,374
DAM NON-NYCA			36,284	20,805	29,862	37,583	38,916
DAM WHEELS			7,900	20,072	13,038	13,148	12,700
DAM VIRTUAL			0	0	0	0	0
BALANCING NYCA			(6,335)	(16,259)	(45,398)	(3,785)	29,488
BALANCING NON-NYCA			12,436	22,470	14,828	7,634	8,934
BALANCING WHEELS			626	(9,143)	(3,508)	(6,665)	(6,272)
BALANCING VIRTUAL			0	0	0	0	0
	6	7	8	9	10	11	12
DAM NYCA	506,424	558,044	598,838	623,667	592,635	426,750	380,992
DAM NON-NYCA	49,300	40,170	24,250	16,644	21,432	25,441	23,831
DAM WHEELS	8,222	11,287	14,498	16,543	9,897	5,607	6,280
DAM VIRTUAL	0	0	0	0	0	0	0
BALANCING NYCA	34,411	27,321	13,783	(9,744)	(9,639)	6,984	26,201
BALANCING NON-NYCA	9,759	15,128	18,561	17,140	20,941	17,137	17,583
BALANCING WHEELS	(173)	(937)	(3,855)	(6,716)	(1,128)	(1,306)	(1,000)
BALANCING VIRTUAL	0	0	0	0	0	0	0
	13	14	15	16	17	18	19
DAM NYCA	447,494	441,304	458,951	467,790	475,134	399,646	378,998
DAM NON-NYCA	32,075	32,489	34,768	41,398	38,752	41,211	33,811
DAM WHEELS	6,200	5,950	6,711	6,802	9,068	3,200	2,200
DAM VIRTUAL	0	0	0	0	0	0	0
BALANCING NYCA	38,168	26,722	(2,171)	(14,729)	11,054	16,476	27,666
BALANCING NON-NYCA	19,257	13,745	17,404	13,126	6,743	4,570	12,697
BALANCING WHEELS	(800)	(750)	(754)	(702)	177	(800)	0
BALANCING VIRTUAL	0	0	0	0	0	0	0
	20	21	22	23	24	25	26
DAM NYCA	451,377	454,834	463,076	463,559	446,800	378,239	360,247
DAM NON-NYCA	43,327	37,603	31,178	47,220	43,931	31,871	39,196
DAM WHEELS	5,002	9,357	8,160	6,944	6,960	4,200	4,700
DAM VIRTUAL	0	0	0	0	0	0	0
BALANCING NYCA	34,626	16,203	12,125	5,354	15,892	3,291	5,597
BALANCING NON-NYCA	7,139	10,560	6,907	365	1,684	12,401	12,240
BALANCING WHEELS	1,174	(842)	(450)	(144)	0	(1,200)	(600)
BALANCING VIRTUAL	0	0	0	0	0	0	0
	27	28	29	30	31		
DAM NYCA	458,627	453,671	457,526	434,251	470,783		
DAM NON-NYCA	43,661	38,198	30,727	37,488	36,275		
DAM WHEELS	6,116	6,566	6,210	6,618	8,047		
DAM VIRTUAL	0	0	0	0	0		
BALANCING NYCA	16,830	28,778	12,963	21,311	12,533		
BALANCING NON-NYCA	7,712	6,930	7,584	8,892	6,073		
BALANCING WHEELS	(300)	(603)	0	(506)	(1,499)		
BALANCING VIRTUAL	0	0	0	0	0		



SETTLEMENTS REPORT
ATTACHMENT E: AUGUST 2001 CLOSEOUT SETTLEMENT
OCTOBER 27, 2005

CLOSEOUT SETTLEMENT MARKET SUPPLY ANALYSIS

	MONDAY	TUESDAY	WEDNESDAY	THURSDAY	FRIDAY	SATURDAY	SUNDAY
			1	2	3	4	5
DAM NYCA			491,730	540,483	551,029	435,636	398,374
DAM NON-NYCA			36,284	20,905	29,862	37,583	38,916
DAM WHEELS			7,900	20,072	13,038	13,148	12,700
DAM VIRTUAL			0	0	0	0	0
BALANCING NYCA			(6,332)	(16,226)	(45,397)	(3,785)	29,517
BALANCING NON-NYCA			12,435	22,470	14,828	7,634	8,934
BALANCING WHEELS			626	(9,143)	(3,508)	(5,665)	(6,272)
BALANCING VIRTUAL			0	0	0	0	0
	6	7	8	9	10	11	12
DAM NYCA	506,424	558,044	598,838	623,667	592,635	426,750	380,992
DAM NON-NYCA	49,300	40,170	24,250	16,644	21,432	25,441	23,831
DAM WHEELS	8,222	11,287	14,498	16,542	9,897	5,607	6,280
DAM VIRTUAL	0	0	0	0	0	0	0
BALANCING NYCA	34,418	27,367	13,970	(9,756)	(9,437)	6,996	26,203
BALANCING NON-NYCA	9,759	15,128	18,561	17,140	20,941	17,137	17,583
BALANCING WHEELS	(173)	(937)	(3,855)	(6,716)	(1,128)	(1,306)	(1,000)
BALANCING VIRTUAL	0	0	0	0	0	0	0
	13	14	15	16	17	18	19
DAM NYCA	447,494	441,304	458,951	467,790	475,134	399,646	378,998
DAM NON-NYCA	32,075	32,489	34,768	41,398	38,752	41,211	33,811
DAM WHEELS	6,200	5,950	6,711	6,802	9,068	3,200	2,200
DAM VIRTUAL	0	0	0	0	0	0	0
BALANCING NYCA	38,183	26,739	(2,156)	(14,720)	11,066	16,478	27,667
BALANCING NON-NYCA	19,257	13,745	17,404	13,126	6,743	4,570	12,697
BALANCING WHEELS	(800)	(750)	(754)	(702)	177	(800)	0
BALANCING VIRTUAL	0	0	0	0	0	0	0
	20	21	22	23	24	25	26
DAM NYCA	451,377	454,943	463,076	463,559	446,800	378,239	360,247
DAM NON-NYCA	43,327	37,603	31,178	47,220	43,931	31,871	39,196
DAM WHEELS	5,002	9,357	8,160	6,944	6,960	4,200	4,700
DAM VIRTUAL	0	0	0	0	0	0	0
BALANCING NYCA	34,647	16,199	12,132	5,365	15,877	3,295	5,613
BALANCING NON-NYCA	7,139	10,560	6,907	365	1,684	12,401	12,240
BALANCING WHEELS	1,174	(842)	(450)	(144)	0	(1,200)	(800)
BALANCING VIRTUAL	0	0	0	0	0	0	0
	27	28	29	30	31		
DAM NYCA	459,171	453,671	457,526	434,351	470,783		
DAM NON-NYCA	43,661	38,198	30,727	37,488	36,275		
DAM WHEELS	6,116	6,566	6,210	6,618	8,047		
DAM VIRTUAL	0	0	0	0	0		
BALANCING NYCA	16,909	28,778	12,971	21,342	12,600		
BALANCING NON-NYCA	7,712	6,930	7,584	8,892	6,073		
BALANCING WHEELS	(300)	(603)	0	(506)	(1,499)		
BALANCING VIRTUAL	0	0	0	0	0		



SETTLEMENTS REPORT
ATTACHMENT E: AUGUST 2001 CLOSEOUT SETTLEMENT
OCTOBER 27, 2005

CLOSEOUT SETTLEMENT MARKET SUPPLY DELTA ANALYSIS

	MONDAY	TUESDAY	WEDNESDAY	THURSDAY	FRIDAY	SATURDAY	SUNDAY
			1	2	3	4	5
DAM NYCA			0	0	0	0	0
DAM NON-NYCA			0	0	0	0	0
DAM WHEELS			0	0	0	0	0
DAM VIRTUAL			0	0	0	0	0
BALANCING NYCA			3	33	1	(0)	29
BALANCING NON-NYCA			0	0	0	0	0
BALANCING WHEELS			0	0	0	0	0
BALANCING VIRTUAL			0	0	0	0	0
	6	7	8	9	10	11	12
DAM NYCA	0	0	0	0	0	0	0
DAM NON-NYCA	0	0	0	0	0	0	0
DAM WHEELS	0	0	0	0	0	0	0
DAM VIRTUAL	0	0	0	0	0	0	0
BALANCING NYCA	8	37	187	(12)	101	13	3
BALANCING NON-NYCA	0	0	0	0	0	0	0
BALANCING WHEELS	0	0	0	0	0	0	0
BALANCING VIRTUAL	0	0	0	0	0	0	0
	13	14	15	16	17	18	19
DAM NYCA	0	0	0	0	0	0	0
DAM NON-NYCA	0	0	0	0	0	0	0
DAM WHEELS	0	0	0	0	0	0	0
DAM VIRTUAL	0	0	0	0	0	0	0
BALANCING NYCA	15	18	15	9	12	2	0
BALANCING NON-NYCA	0	0	0	0	0	0	0
BALANCING WHEELS	0	0	0	0	0	0	0
BALANCING VIRTUAL	0	0	0	0	0	0	0
	20	21	22	23	24	25	26
DAM NYCA	0	109	0	0	0	0	0
DAM NON-NYCA	0	0	0	0	0	0	0
DAM WHEELS	0	0	0	0	0	0	0
DAM VIRTUAL	0	0	0	0	0	0	0
BALANCING NYCA	21	(4)	7	11	(15)	3	16
BALANCING NON-NYCA	0	0	0	0	0	0	0
BALANCING WHEELS	0	0	0	0	0	0	0
BALANCING VIRTUAL	0	0	0	0	0	0	0
	27	28	29	30	31		
DAM NYCA	544	0	0	0	0		
DAM NON-NYCA	0	0	0	0	0		
DAM WHEELS	0	0	0	0	0		
DAM VIRTUAL	0	0	0	0	0		
BALANCING NYCA	80	(0)	7	31	68		
BALANCING NON-NYCA	0	0	0	0	0		
BALANCING WHEELS	0	0	0	0	0		
BALANCING VIRTUAL	0	0	0	0	0		

