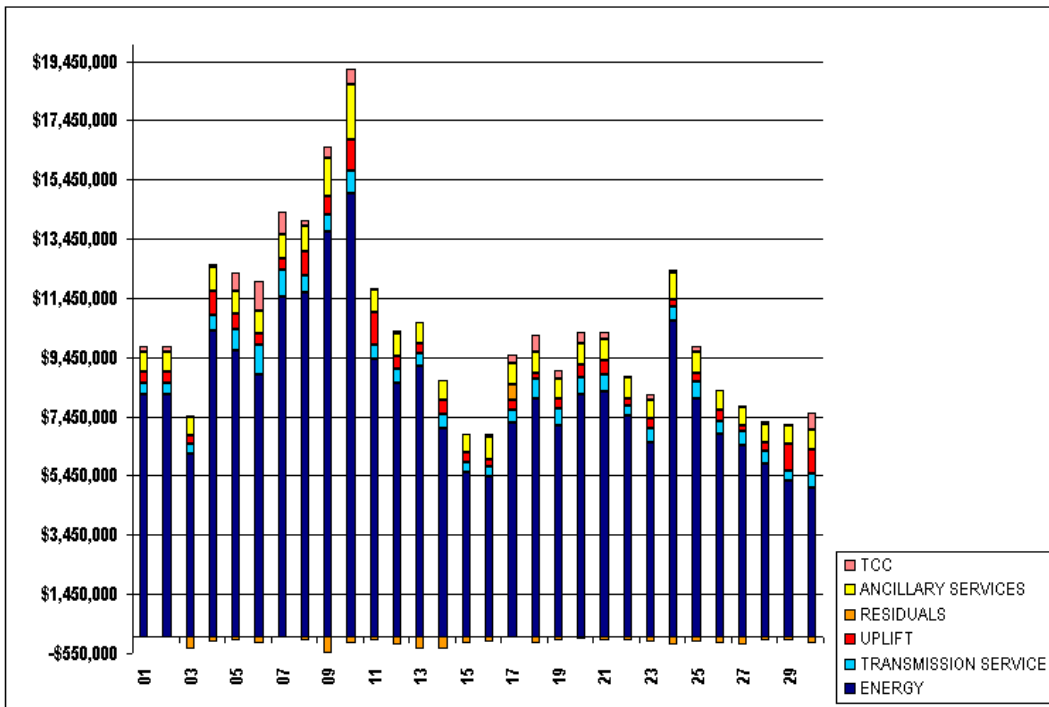


SETTLEMENTS REPORT
ATTACHMENT E: SEPTEMBER 2001 CLOSEOUT SETTLEMENT
OCTOBER 27, 2005

24-MONTH SETTLEMENT ADJUSTMENT MARKET COSTS

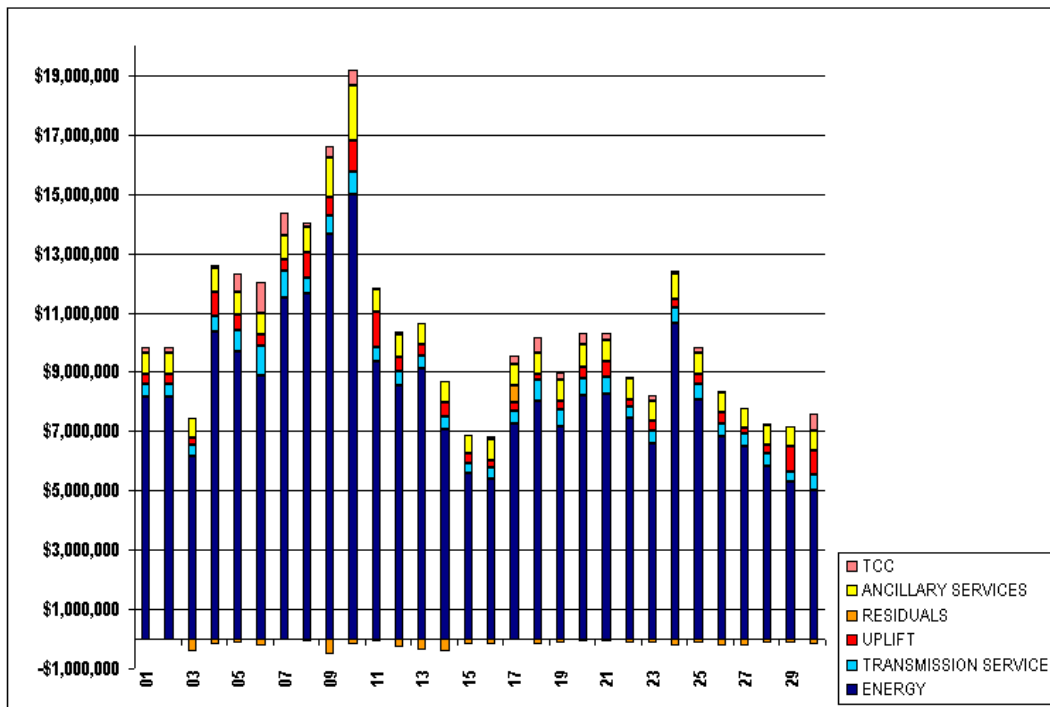
	MONDAY	TUESDAY	WEDNESDAY	THURSDAY	FRIDAY	SATURDAY	SUNDAY
ENERGY						1	2
TRANSMISSION SERVICE						\$8,179,035.18	\$8,179,035.18
UPLIFT						\$421,954.51	\$421,954.51
RESIDUALS						\$346,026.44	\$346,026.44
ANCILLARY SERVICES						(\$14,063.22)	(\$14,063.22)
TCC						\$699,482.20	\$699,482.20
						\$184,686.87	\$184,686.87
	3	4	5	6	7	8	9
ENERGY	\$6,171,315.57	\$10,355,293.46	\$9,679,861.34	\$8,885,048.83	\$11,508,223.25	\$11,644,754.20	\$13,668,411.41
TRANSMISSION SERVICE	\$354,328.15	\$530,068.97	\$724,164.94	\$1,003,282.27	\$888,048.66	\$546,035.76	\$601,016.71
UPLIFT	\$266,821.49	\$816,334.75	\$535,676.80	\$369,654.02	\$390,214.33	\$849,224.39	\$601,883.91
RESIDUALS	(\$419,356.69)	(\$178,848.94)	(\$121,540.92)	(\$213,169.76)	(\$36,359.82)	(\$105,475.53)	(\$540,209.52)
ANCILLARY SERVICES	\$660,308.41	\$780,762.12	\$748,939.12	\$736,375.53	\$825,932.35	\$847,145.30	\$1,300,860.16
TCC	\$4,145.70	\$102,468.50	\$630,483.37	\$1,039,355.88	\$742,207.78	\$176,855.20	\$396,743.49
	10	11	12	13	14	15	16
ENERGY	\$14,995,765.89	\$9,374,391.18	\$8,564,064.89	\$9,138,865.93	\$7,056,172.63	\$5,562,712.48	\$5,406,781.42
TRANSMISSION SERVICE	\$752,582.33	\$475,394.90	\$476,697.81	\$425,210.75	\$460,990.52	\$339,667.49	\$357,568.51
UPLIFT	\$1,067,806.22	\$1,135,280.15	\$465,958.05	\$343,772.44	\$483,833.90	\$348,392.87	\$243,000.18
RESIDUALS	(\$191,668.14)	(\$113,092.25)	(\$277,423.05)	(\$393,379.02)	(\$416,602.48)	(\$203,619.86)	(\$170,727.67)
ANCILLARY SERVICES	\$1,850,811.70	\$757,742.39	\$758,731.35	\$727,049.96	\$676,605.45	\$608,327.58	\$744,061.58
TCC	\$539,562.71	\$23,449.78	\$103,927.20	(\$2,416.36)	\$12,848.16	\$180.71	\$89,297.11
	17	18	19	20	21	22	23
ENERGY	\$7,253,585.46	\$8,042,056.22	\$7,159,077.50	\$8,194,953.24	\$8,276,572.75	\$7,456,610.93	\$6,582,739.09
TRANSMISSION SERVICE	\$432,905.04	\$681,602.42	\$559,728.59	\$594,860.97	\$571,029.57	\$365,282.43	\$442,686.99
UPLIFT	\$299,792.43	\$195,916.12	\$312,536.71	\$399,661.41	\$501,532.21	\$251,943.58	\$344,170.50
RESIDUALS	\$554,734.39	(\$205,870.56)	(\$131,237.92)	(\$89,598.22)	(\$111,866.69)	(\$138,436.31)	(\$153,163.84)
ANCILLARY SERVICES	\$714,887.31	\$715,003.01	\$713,692.06	\$732,071.06	\$729,248.05	\$683,174.18	\$648,254.85
TCC	\$287,784.39	\$548,939.77	\$243,693.80	\$390,195.83	\$231,094.89	\$50,735.89	\$184,300.43
	24	25	26	27	28	29	30
ENERGY	\$10,666,472.14	\$8,050,739.63	\$6,837,238.16	\$6,485,639.95	\$5,845,171.79	\$5,292,968.61	\$5,022,744.69
TRANSMISSION SERVICE	\$500,201.82	\$565,682.16	\$436,274.16	\$460,787.94	\$417,260.91	\$320,485.84	\$510,007.32
UPLIFT	\$253,913.31	\$297,135.15	\$379,836.99	\$178,389.76	\$294,166.10	\$917,008.44	\$806,438.05
RESIDUALS	(\$246,838.78)	(\$154,016.06)	(\$239,153.04)	(\$240,059.85)	(\$128,289.62)	(\$134,047.97)	(\$200,452.85)
ANCILLARY SERVICES	\$899,429.51	\$710,364.71	\$672,927.13	\$661,906.48	\$651,717.26	\$623,169.05	\$656,530.02
TCC	\$59,532.16	\$212,464.83	\$21,082.05	\$12,011.29	\$56,745.44	\$23,408.81	\$571,304.86



SETTLEMENTS REPORT
ATTACHMENT E: SEPTEMBER 2001 CLOSEOUT SETTLEMENT
OCTOBER 27, 2005

CLOSEOUT SETTLEMENT MARKET COSTS

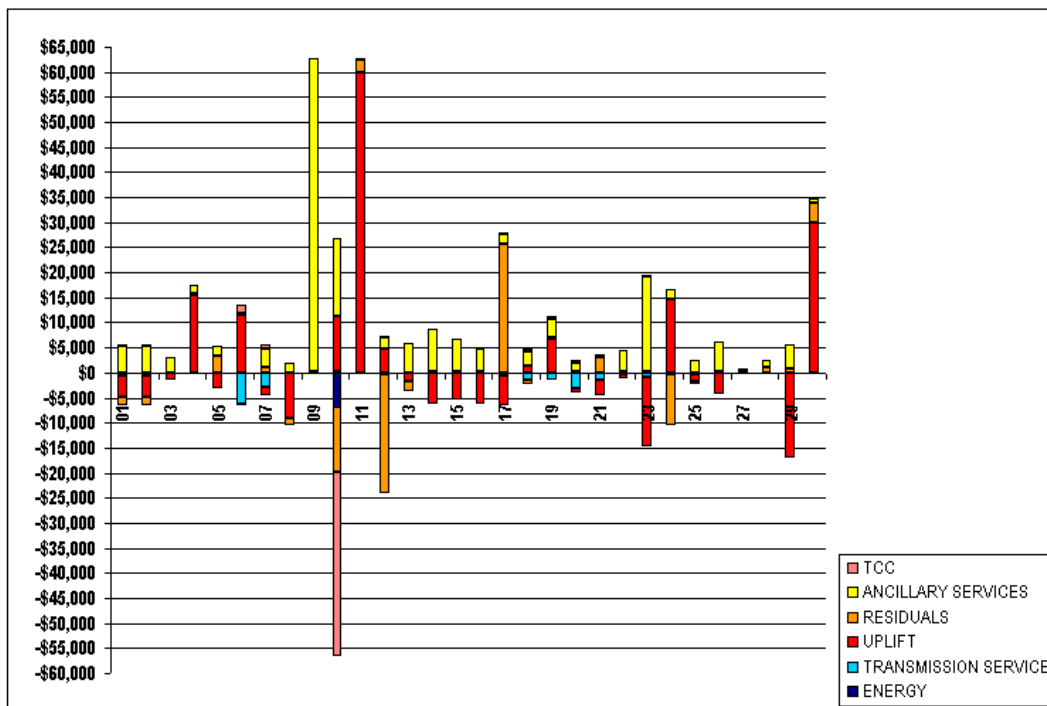
	MONDAY	TUESDAY	WEDNESDAY	THURSDAY	FRIDAY	SATURDAY	SUNDAY
ENERGY						\$8,179,039.43	\$8,179,039.43
TRANSMISSION SERVICE						\$421,237.57	\$421,237.57
UPLIFT						\$341,906.07	\$341,906.07
RESIDUALS						(\$15,644.75)	(\$15,644.75)
ANCILLARY SERVICES						\$704,796.34	\$704,796.34
TCC						\$184,854.45	\$184,854.45
	3	4	5	6	7	8	9
ENERGY	\$6,171,315.44	\$10,355,294.00	\$9,679,861.37	\$8,885,048.89	\$11,508,222.60	\$11,644,755.09	\$13,668,425.05
TRANSMISSION SERVICE	\$354,262.26	\$530,002.32	\$724,098.13	\$997,051.37	\$885,191.22	\$545,918.53	\$600,907.17
UPLIFT	\$265,294.67	\$831,842.26	\$532,605.04	\$381,299.70	\$388,618.41	\$840,197.32	\$601,881.86
RESIDUALS	(\$419,271.98)	(\$178,526.79)	(\$118,318.23)	(\$213,549.93)	(\$35,191.95)	(\$106,706.85)	(\$540,113.24)
ANCILLARY SERVICES	\$663,206.90	\$782,354.12	\$751,040.63	\$736,700.32	\$829,530.29	\$849,044.28	\$1,363,439.31
TCC	\$4,145.70	\$102,468.50	\$630,483.37	\$1,040,951.31	\$742,924.84	\$176,855.20	\$396,743.49
	10	11	12	13	14	15	16
ENERGY	\$14,988,845.19	\$9,374,391.83	\$8,564,064.89	\$9,138,862.00	\$7,056,172.43	\$5,562,712.04	\$5,406,781.40
TRANSMISSION SERVICE	\$752,744.83	\$475,287.94	\$476,307.84	\$425,106.08	\$460,837.56	\$339,553.12	\$357,412.22
UPLIFT	\$1,078,964.16	\$1,195,124.91	\$460,586.42	\$342,238.84	\$477,751.78	\$342,978.50	\$236,781.58
RESIDUALS	(\$204,486.77)	(\$110,493.55)	(\$301,112.83)	(\$395,322.69)	(\$416,419.94)	(\$203,349.75)	(\$170,616.27)
ANCILLARY SERVICES	\$1,866,244.87	\$758,016.04	\$761,260.53	\$733,027.82	\$685,191.35	\$614,885.71	\$748,702.99
TCC	\$502,619.98	\$23,449.78	\$104,001.30	(\$2,416.36)	\$12,859.56	\$180.71	\$89,306.77
	17	18	19	20	21	22	23
ENERGY	\$7,253,585.57	\$8,042,055.94	\$7,159,077.67	\$8,194,953.42	\$8,276,572.99	\$7,456,610.95	\$6,582,739.08
TRANSMISSION SERVICE	\$432,384.15	\$680,192.79	\$558,284.44	\$591,796.02	\$569,532.48	\$364,944.17	\$441,695.90
UPLIFT	\$293,789.09	\$197,201.89	\$319,213.24	\$398,803.61	\$498,367.74	\$251,198.63	\$330,441.36
RESIDUALS	\$580,359.47	(\$206,627.35)	(\$130,781.37)	(\$89,345.65)	(\$108,753.78)	(\$138,302.57)	(\$152,993.36)
ANCILLARY SERVICES	\$717,003.47	\$718,039.43	\$717,362.67	\$733,719.78	\$729,362.69	\$687,482.74	\$667,228.39
TCC	\$287,888.13	\$549,268.66	\$244,042.07	\$390,893.51	\$231,424.56	\$50,796.31	\$184,530.14
	24	25	26	27	28	29	30
ENERGY	\$10,666,472.52	\$8,050,739.83	\$6,837,237.97	\$6,485,639.84	\$5,845,171.60	\$5,292,968.52	\$5,022,744.40
TRANSMISSION SERVICE	\$499,915.37	\$565,244.88	\$436,157.79	\$460,676.24	\$417,151.73	\$320,366.26	\$509,885.16
UPLIFT	\$268,609.61	\$295,806.78	\$375,587.09	\$178,840.08	\$294,223.89	\$899,989.61	\$836,326.39
RESIDUALS	(\$267,066.04)	(\$154,552.39)	(\$238,891.10)	(\$239,871.20)	(\$127,360.95)	(\$133,137.24)	(\$196,463.05)
ANCILLARY SERVICES	\$901,327.18	\$712,788.96	\$678,736.26	\$662,135.99	\$653,122.78	\$627,941.49	\$657,298.67
TCC	\$59,577.76	\$212,545.77	\$21,082.05	\$12,011.29	\$56,745.44	\$23,408.81	\$571,304.86



SETTLEMENTS REPORT
ATTACHMENT E: SEPTEMBER 2001 CLOSEOUT SETTLEMENT
OCTOBER 27, 2005

CLOSEOUT SETTLEMENT MARKET COSTS DELTA

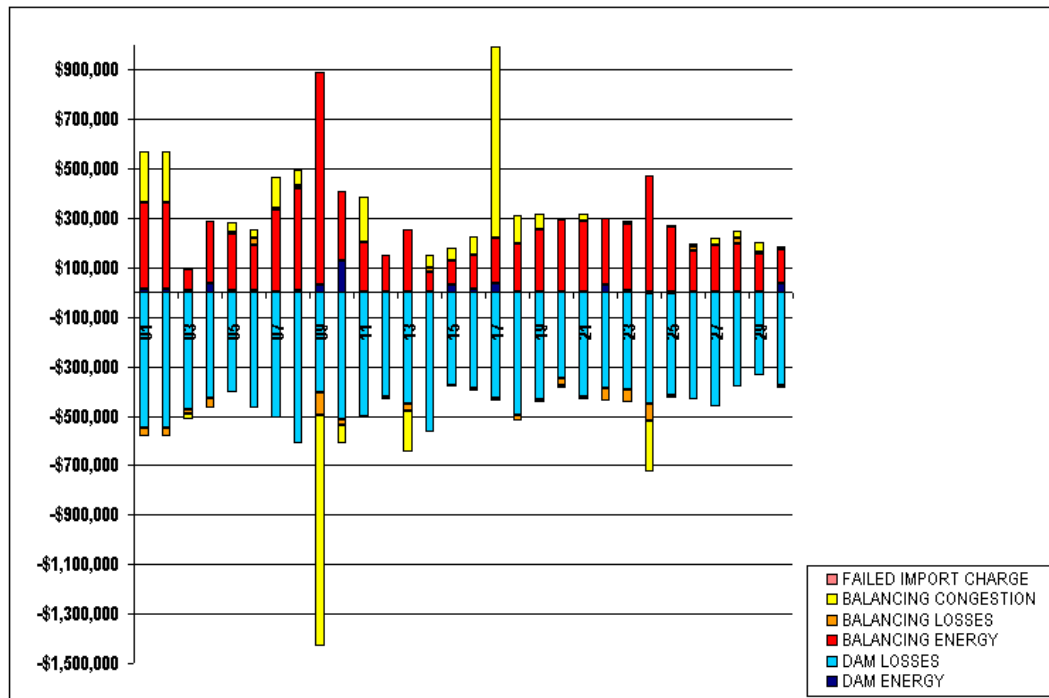
	MONDAY	TUESDAY	WEDNESDAY	THURSDAY	FRIDAY	SATURDAY	SUNDAY
ENERGY						1	2
TRANSMISSION SERVICE						\$4.25	\$4.25
UPLIFT						(\$716.94)	(\$716.94)
RESIDUALS						(\$4,120.37)	(\$4,120.37)
ANCILLARY SERVICES						(\$1,581.53)	(\$1,581.53)
TCC						\$5,314.14	\$5,314.14
						\$167.58	\$167.58
	3	4	5	6	7	8	9
ENERGY	(\$0.13)	\$0.54	\$0.03	\$0.06	(\$0.65)	\$0.89	\$13.64
TRANSMISSION SERVICE	(\$65.89)	(\$66.65)	(\$66.81)	(\$6,230.90)	(\$2,857.44)	(\$117.23)	(\$109.54)
UPLIFT	(\$1,526.82)	\$15,507.51	(\$3,071.76)	\$11,645.68	(\$1,595.92)	(\$9,027.07)	(\$2.05)
RESIDUALS	\$84.71	\$322.15	\$3,222.69	(\$380.17)	\$1,167.87	(\$1,231.32)	\$96.28
ANCILLARY SERVICES	\$2,898.49	\$1,592.00	\$2,101.51	\$324.79	\$3,597.94	\$1,898.98	\$62,679.15
TCC	\$0.00	\$0.00	\$0.00	\$1,595.43	\$717.06	\$0.00	\$0.00
	10	11	12	13	14	15	16
ENERGY	(\$6,920.70)	\$0.65	\$0.00	(\$3.93)	(\$0.20)	(\$0.44)	(\$0.02)
TRANSMISSION SERVICE	\$162.50	(\$106.96)	(\$389.97)	(\$104.67)	(\$152.96)	(\$114.37)	(\$156.29)
UPLIFT	\$11,157.94	\$59,844.76	\$4,628.37	(\$1,533.60)	(\$6,082.12)	(\$5,414.37)	(\$6,218.60)
RESIDUALS	(\$12,818.63)	\$2,598.70	(\$23,689.78)	(\$1,943.67)	\$182.54	\$270.11	\$111.40
ANCILLARY SERVICES	\$15,433.17	\$273.65	\$2,529.18	\$5,977.86	\$8,585.90	\$6,558.13	\$4,641.41
TCC	(\$36,942.73)	\$0.00	\$74.10	\$0.00	\$11.40	\$0.00	\$9.66
	17	18	19	20	21	22	23
ENERGY	\$0.11	(\$0.28)	\$0.17	\$0.18	\$0.24	\$0.02	(\$0.01)
TRANSMISSION SERVICE	(\$520.89)	(\$1,409.63)	(\$1,444.15)	(\$3,064.95)	(\$1,497.09)	(\$338.26)	(\$991.09)
UPLIFT	(\$6,003.34)	\$1,285.77	\$6,676.53	(\$857.80)	(\$3,164.47)	(\$744.95)	(\$13,729.14)
RESIDUALS	\$25,625.08	(\$756.79)	\$456.55	\$252.57	\$3,112.91	\$133.74	\$170.48
ANCILLARY SERVICES	\$2,116.16	\$3,036.42	\$3,670.61	\$1,648.72	\$114.64	\$4,308.56	\$18,973.54
TCC	\$103.74	\$328.89	\$348.27	\$697.68	\$329.67	\$60.42	\$229.71
	24	25	26	27	28	29	30
ENERGY	\$0.38	\$0.20	(\$0.19)	(\$0.11)	(\$0.19)	(\$0.09)	(\$0.29)
TRANSMISSION SERVICE	(\$286.45)	(\$437.28)	(\$116.37)	(\$111.70)	(\$109.18)	(\$119.58)	(\$122.16)
UPLIFT	\$14,696.30	(\$1,328.37)	(\$4,249.90)	\$450.32	\$57.79	(\$17,018.83)	\$29,888.34
RESIDUALS	(\$10,227.26)	(\$536.33)	\$261.94	\$188.65	\$928.67	\$910.73	\$3,989.80
ANCILLARY SERVICES	\$1,897.67	\$2,424.25	\$5,809.13	\$229.51	\$1,405.52	\$4,772.44	\$768.65
TCC	\$45.60	\$80.94	\$0.00	\$0.00	\$0.00	\$0.00	\$0.00



SETTLEMENTS REPORT
ATTACHMENT E: SEPTEMBER 2001 CLOSEOUT SETTLEMENT
OCTOBER 27, 2005

24-MONTH SETTLEMENT ADJUSTMENT MARKET RESIDUALS

	MONDAY	TUESDAY	WEDNESDAY	THURSDAY	FRIDAY	SATURDAY	SUNDAY
						1	2
DAM ENERGY						\$15,826.09	\$15,826.09
DAM LOSSES						(\$545,585.75)	(\$545,585.75)
BALANCING ENERGY						\$345,594.97	\$345,594.97
BALANCING LOSSES						(\$36,733.48)	(\$36,733.48)
BALANCING CONGESTION						\$206,280.04	\$206,280.04
FAILED IMPORT CHARGE						\$0.00	\$0.00
	3	4	5	6	7	8	9
DAM ENERGY	\$5,944.65	\$39,303.69	\$8,092.27	\$6,235.35	\$112.08	\$5,288.74	\$29,407.41
DAM LOSSES	(\$474,646.36)	(\$428,889.68)	(\$402,788.97)	(\$467,887.09)	(\$506,876.16)	(\$608,421.89)	(\$404,591.41)
BALANCING ENERGY	\$87,930.14	\$249,336.01	\$227,998.00	\$185,163.60	\$333,050.25	\$413,402.93	\$861,423.65
BALANCING LOSSES	(\$14,778.84)	(\$36,831.44)	\$8,322.35	\$26,487.26	\$9,264.17	\$11,178.28	(\$92,801.82)
BALANCING CONGESTION	(\$24,009.50)	(\$3,622.77)	\$36,170.74	\$36,083.76	\$126,678.31	\$64,614.03	(\$334,969.94)
FAILED IMPORT CHARGE	\$0.00	\$0.00	\$0.00	\$0.00	\$0.00	\$0.00	\$0.00
	10	11	12	13	14	15	16
DAM ENERGY	\$130,052.18	\$502.38	\$379.82	(\$120.24)	\$2,741.23	\$30,741.72	\$15,910.78
DAM LOSSES	(\$511,991.60)	(\$500,625.95)	(\$422,459.38)	(\$449,216.70)	(\$567,771.48)	(\$376,372.59)	(\$390,336.27)
BALANCING ENERGY	\$279,100.92	\$204,918.35	\$150,079.58	\$253,719.17	\$81,620.11	\$98,567.73	\$136,568.81
BALANCING LOSSES	(\$27,211.50)	(\$1,786.12)	(\$10,010.50)	(\$32,371.54)	\$15,436.98	(\$6,480.78)	(\$5,894.55)
BALANCING CONGESTION	(\$69,515.89)	\$180,138.00	\$2,888.79	(\$166,127.13)	\$51,043.31	\$49,496.39	\$72,630.25
FAILED IMPORT CHARGE	\$0.00	\$0.00	\$0.00	\$0.00	\$0.00	\$0.00	\$0.00
	17	18	19	20	21	22	23
DAM ENERGY	\$34,317.84	\$4,644.64	\$1,683.61	(\$275.36)	\$2,025.00	\$31,080.77	\$8,472.42
DAM LOSSES	(\$425,292.43)	(\$496,158.55)	(\$434,972.97)	(\$346,653.69)	(\$424,114.64)	(\$386,245.86)	(\$394,684.72)
BALANCING ENERGY	\$185,737.78	\$191,308.85	\$255,368.03	\$297,163.86	\$286,163.60	\$267,506.55	\$266,280.78
BALANCING LOSSES	(\$13,674.60)	(\$24,228.49)	(\$12,756.69)	(\$30,852.78)	(\$8,063.72)	(\$50,111.89)	(\$49,049.35)
BALANCING CONGESTION	\$773,263.93	\$118,380.76	\$58,747.71	(\$10,377.47)	\$31,386.50	(\$1,194.23)	\$15,531.05
FAILED IMPORT CHARGE	\$0.00	\$0.00	\$0.00	\$0.00	\$0.00	\$0.00	\$0.00
	24	25	26	27	28	29	30
DAM ENERGY	(\$794.21)	(\$985.60)	\$92.36	\$980.85	\$3,088.03	\$1,487.63	\$39,062.85
DAM LOSSES	(\$452,211.89)	(\$414,981.24)	(\$434,900.12)	(\$459,750.92)	(\$379,131.20)	(\$335,595.01)	(\$376,311.68)
BALANCING ENERGY	\$472,724.85	\$267,674.89	\$169,978.69	\$188,714.53	\$196,688.52	\$153,237.25	\$136,943.56
BALANCING LOSSES	(\$68,800.62)	(\$10,320.08)	\$16,457.34	\$3,399.00	\$18,136.14	\$8,934.52	(\$8,540.94)
BALANCING CONGESTION	(\$205,681.83)	\$3,983.77	\$8,528.22	\$26,312.80	\$32,515.01	\$37,572.88	\$7,769.50
FAILED IMPORT CHARGE	\$0.00	\$0.00	\$0.00	\$0.00	\$0.00	\$0.00	\$0.00

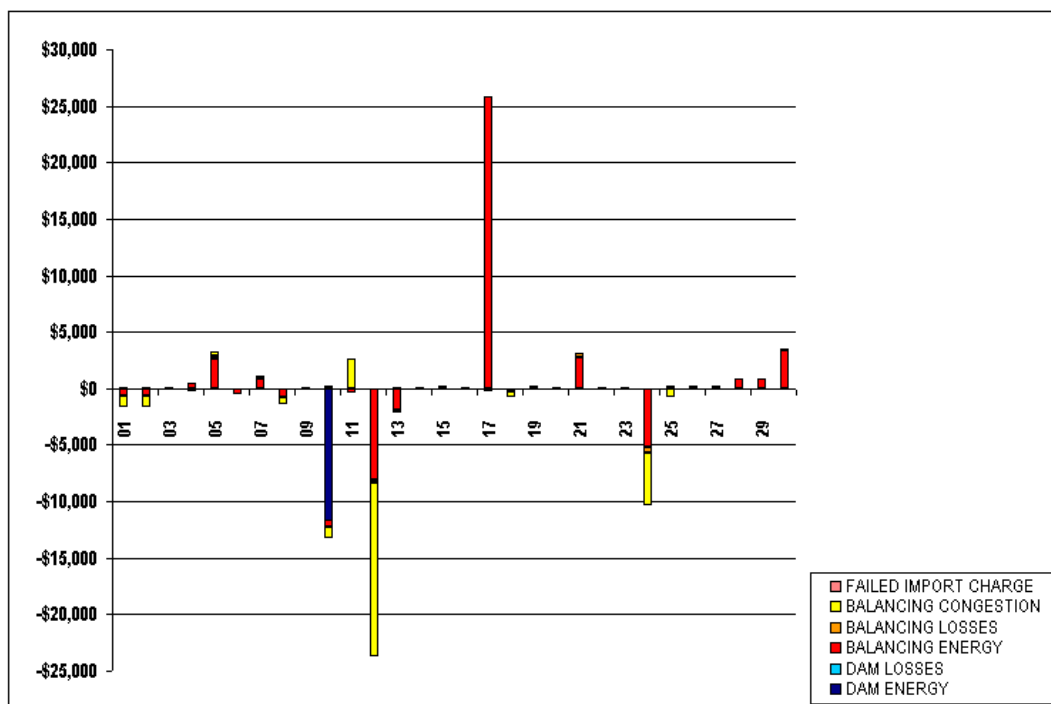


FOR DISCUSSION PURPOSES ONLY

SETTLEMENTS REPORT
ATTACHMENT E: SEPTEMBER 2001 CLOSEOUT SETTLEMENT
OCTOBER 27, 2005

CLOSEOUT SETTLEMENT MARKET RESIDUALS ANALYSIS

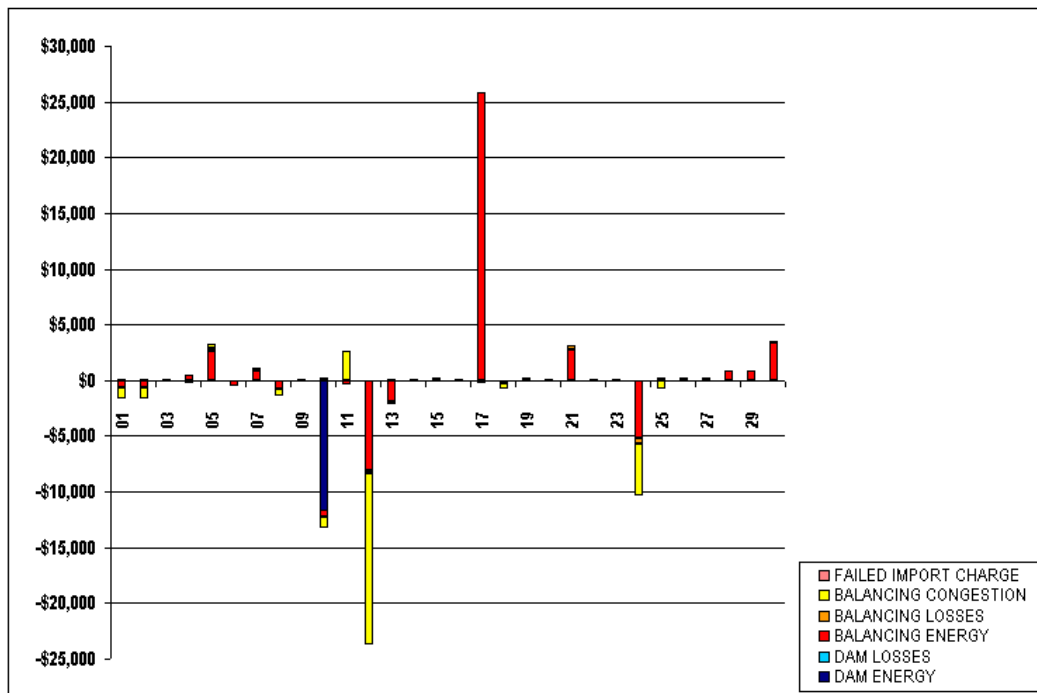
	MONDAY	TUESDAY	WEDNESDAY	THURSDAY	FRIDAY	SATURDAY	SUNDAY
						1	2
DAM ENERGY						\$0.00	\$0.00
DAM LOSSES						\$0.00	\$0.00
BALANCING ENERGY						(\$615.33)	(\$615.33)
BALANCING LOSSES						\$55.48	\$55.48
BALANCING CONGESTION						(\$1,026.25)	(\$1,026.25)
FAILED IMPORT CHARGE						\$0.00	\$0.00
	3	4	5	6	7	8	9
DAM ENERGY	\$0.00	\$0.00	(\$0.01)	\$0.00	\$0.01	\$0.00	\$0.00
DAM LOSSES	\$0.00	(\$30.17)	(\$5.12)	\$0.01	\$0.00	\$0.00	\$0.00
BALANCING ENERGY	\$79.84	\$446.50	\$2,681.65	(\$470.31)	\$799.62	(\$762.26)	\$81.79
BALANCING LOSSES	\$3.90	\$50.01	\$209.28	(\$29.29)	\$84.05	(\$16.43)	(\$72.49)
BALANCING CONGESTION	\$4.65	(\$249.98)	\$309.30	\$20.78	\$209.03	(\$594.00)	(\$26.29)
FAILED IMPORT CHARGE	\$0.00	\$0.00	\$0.00	\$0.00	\$0.00	\$0.00	\$0.00
	10	11	12	13	14	15	16
DAM ENERGY	(\$11,640.60)	\$0.00	(\$0.01)	\$0.00	\$0.00	\$0.00	\$0.00
DAM LOSSES	\$168.49	\$0.00	\$0.01	\$0.02	\$0.00	\$0.00	\$0.00
BALANCING ENERGY	(\$632.37)	(\$383.00)	(\$8,042.57)	(\$1,934.00)	\$160.18	\$236.86	\$62.15
BALANCING LOSSES	\$19.17	(\$52.10)	(\$368.82)	(\$179.96)	\$4.99	\$5.88	\$2.46
BALANCING CONGESTION	(\$960.31)	\$2,572.53	(\$15,337.06)	\$143.46	(\$6.47)	\$1.83	\$0.06
FAILED IMPORT CHARGE	\$0.00	\$0.00	\$0.00	\$0.00	\$0.00	\$0.00	\$0.00
	17	18	19	20	21	22	23
DAM ENERGY	\$0.00	\$0.00	\$0.01	\$0.00	\$0.00	\$0.00	\$0.00
DAM LOSSES	\$0.01	\$0.02	\$0.01	\$0.02	\$0.01	\$0.00	\$0.00
BALANCING ENERGY	\$25,823.84	(\$223.13)	\$260.71	\$155.79	\$2,736.53	\$107.75	\$79.81
BALANCING LOSSES	(\$219.37)	\$36.26	\$11.67	\$7.77	\$348.79	\$7.51	(\$0.83)
BALANCING CONGESTION	\$11.54	(\$571.39)	\$13.04	(\$1.80)	\$10.48	(\$18.97)	(\$25.15)
FAILED IMPORT CHARGE	\$0.00	\$0.00	\$0.00	\$0.00	\$0.00	\$0.00	\$0.00
	24	25	26	27	28	29	30
DAM ENERGY	\$0.00	\$0.00	\$0.01	\$0.00	\$0.00	\$0.00	\$0.00
DAM LOSSES	\$0.01	\$0.01	\$0.01	\$0.01	\$0.00	\$0.00	\$0.00
BALANCING ENERGY	(\$5,146.03)	\$209.46	\$236.15	\$145.60	\$834.97	\$852.38	\$3,354.44
BALANCING LOSSES	(\$531.93)	(\$69.51)	\$9.83	\$7.40	\$58.78	\$44.57	\$180.80
BALANCING CONGESTION	(\$4,702.82)	(\$719.79)	\$4.90	\$14.96	\$0.40	\$9.74	\$1.82
FAILED IMPORT CHARGE	\$0.00	\$0.00	\$0.00	\$0.00	\$0.00	\$0.00	\$0.00



SETTLEMENTS REPORT
 ATTACHMENT E: SEPTEMBER 2001 CLOSEOUT SETTLEMENT
 OCTOBER 27, 2005

CLOSEOUT SETTLEMENT MARKET RESIDUALS DELTA ANALYSIS

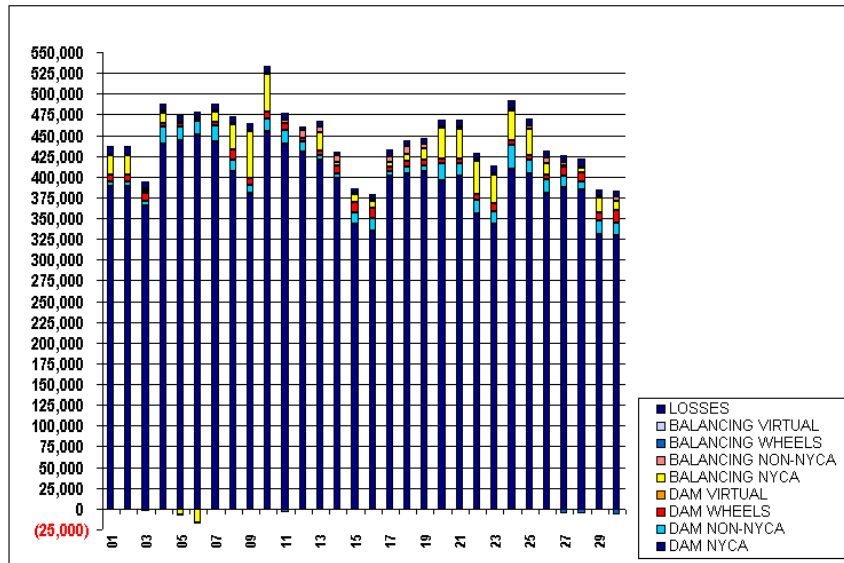
	MONDAY	TUESDAY	WEDNESDAY	THURSDAY	FRIDAY	SATURDAY	SUNDAY
						1	2
DAM ENERGY						\$0.00	\$0.00
DAM LOSSES						\$0.00	\$0.00
BALANCING ENERGY						(\$615.33)	(\$615.33)
BALANCING LOSSES						\$55.48	\$55.48
BALANCING CONGESTION						(\$1,026.25)	(\$1,026.25)
FAILED IMPORT CHARGE						\$0.00	\$0.00
	3	4	5	6	7	8	9
DAM ENERGY	\$0.00	\$0.00	(\$0.01)	\$0.00	\$0.01	\$0.00	\$0.00
DAM LOSSES	\$0.00	(\$30.17)	(\$5.12)	\$0.01	\$0.00	\$0.00	\$0.00
BALANCING ENERGY	\$79.84	\$446.50	\$2,681.65	(\$470.31)	\$799.62	(\$762.26)	\$81.79
BALANCING LOSSES	\$3.90	\$50.01	\$209.28	(\$29.29)	\$84.05	(\$16.43)	(\$72.49)
BALANCING CONGESTION	\$4.65	(\$249.98)	\$309.30	\$20.78	\$209.03	(\$594.00)	(\$26.29)
FAILED IMPORT CHARGE	\$0.00	\$0.00	\$0.00	\$0.00	\$0.00	\$0.00	\$0.00
	10	11	12	13	14	15	16
DAM ENERGY	(\$11,640.60)	\$0.00	(\$0.01)	\$0.00	\$0.00	\$0.00	\$0.00
DAM LOSSES	\$168.49	\$0.00	\$0.01	\$0.02	\$0.00	\$0.00	\$0.00
BALANCING ENERGY	(\$632.37)	(\$383.00)	(\$8,042.57)	(\$1,934.00)	\$160.18	\$236.86	\$62.15
BALANCING LOSSES	\$19.17	(\$52.10)	(\$368.82)	(\$179.96)	\$4.99	\$5.88	\$2.46
BALANCING CONGESTION	(\$960.31)	\$2,572.53	(\$15,337.06)	\$143.46	(\$6.47)	\$1.83	\$0.06
FAILED IMPORT CHARGE	\$0.00	\$0.00	\$0.00	\$0.00	\$0.00	\$0.00	\$0.00
	17	18	19	20	21	22	23
DAM ENERGY	\$0.00	\$0.00	\$0.01	\$0.00	\$0.00	\$0.00	\$0.00
DAM LOSSES	\$0.01	\$0.02	\$0.01	\$0.02	\$0.01	\$0.00	\$0.00
BALANCING ENERGY	\$25,823.84	(\$223.13)	\$260.71	\$155.79	\$2,736.53	\$107.75	\$79.81
BALANCING LOSSES	(\$219.37)	\$36.26	\$11.67	\$7.77	\$348.79	\$7.51	(\$0.83)
BALANCING CONGESTION	\$11.54	(\$571.39)	\$13.04	(\$1.80)	\$10.48	(\$18.97)	(\$25.15)
FAILED IMPORT CHARGE	\$0.00	\$0.00	\$0.00	\$0.00	\$0.00	\$0.00	\$0.00
	24	25	26	27	28	29	30
DAM ENERGY	\$0.00	\$0.00	\$0.01	\$0.00	\$0.00	\$0.00	\$0.00
DAM LOSSES	\$0.01	\$0.01	\$0.01	\$0.01	\$0.00	\$0.00	\$0.00
BALANCING ENERGY	(\$5,146.03)	\$209.46	\$236.15	\$145.60	\$834.97	\$852.38	\$3,354.44
BALANCING LOSSES	(\$531.93)	(\$69.51)	\$9.83	\$7.40	\$58.78	\$44.57	\$180.80
BALANCING CONGESTION	(\$4,702.82)	(\$719.79)	\$4.90	\$14.96	\$0.40	\$9.74	\$1.82
FAILED IMPORT CHARGE	\$0.00	\$0.00	\$0.00	\$0.00	\$0.00	\$0.00	\$0.00



SETTLEMENTS REPORT
ATTACHMENT E: SEPTEMBER 2001 CLOSEOUT SETTLEMENT
OCTOBER 27, 2005

24-MONTH SETTLEMENT ADJUSTMENT MARKET WITHDRAWALS ANALYSIS

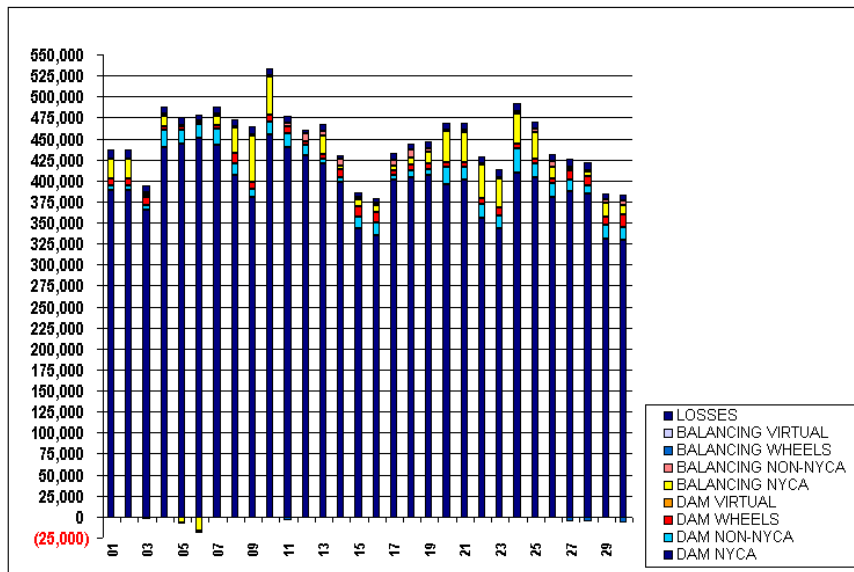
	MONDAY	TUESDAY	WEDNESDAY	THURSDAY	FRIDAY	SATURDAY	SUNDAY
						1	2
DAM NYCA						388,696	388,696
DAM NON-NYCA						5,457	5,457
DAM WHEELS						8,200	8,200
DAM VIRTUAL						0	0
BALANCING NYCA						23,311	23,311
BALANCING NON-NYCA						671	671
BALANCING WHEELS						(1,800)	(1,800)
BALANCING VIRTUAL						0	0
LOSSES						10,355	10,355
	3	4	5	6	7	8	9
DAM NYCA	365,760	439,736	444,012	450,563	442,554	406,113	380,860
DAM NON-NYCA	5,154	20,180	16,780	16,546	19,651	14,596	9,556
DAM WHEELS	9,100	4,446	4,000	3,000	3,750	11,575	7,600
DAM VIRTUAL	0	0	0	0	0	0	0
BALANCING NYCA	2,697	12,356	(6,790)	(16,859)	11,766	31,037	56,409
BALANCING NON-NYCA	3,887	2,496	1,302	1,190	2,486	960	1,260
BALANCING WHEELS	(2,353)	0	(1,200)	(1,793)	(1,200)	(2,163)	(1,200)
BALANCING VIRTUAL	0	0	0	0	0	0	0
LOSSES	7,830	8,900	8,522	7,129	8,375	8,465	8,601
	10	11	12	13	14	15	16
DAM NYCA	454,201	439,602	429,572	420,605	398,417	343,332	334,321
DAM NON-NYCA	16,023	16,163	13,157	5,335	4,935	14,261	15,191
DAM WHEELS	8,400	8,600	4,150	4,800	9,821	12,375	12,200
DAM VIRTUAL	0	0	0	0	0	0	0
BALANCING NYCA	44,955	670	(182)	22,324	4,106	8,513	8,749
BALANCING NON-NYCA	1,358	4,255	9,067	6,785	9,139	2,279	1,914
BALANCING WHEELS	(1,592)	(3,850)	(1,150)	(1,200)	(1,625)	(1,675)	(2,210)
BALANCING VIRTUAL	0	0	0	0	0	0	0
LOSSES	8,677	7,928	4,751	7,053	3,617	4,876	6,429
	17	18	19	20	21	22	23
DAM NYCA	400,435	403,516	406,496	396,967	400,528	355,733	342,552
DAM NON-NYCA	6,481	8,702	7,380	20,785	15,790	16,002	15,199
DAM WHEELS	5,553	6,425	6,214	4,414	5,196	7,550	9,920
DAM VIRTUAL	0	0	0	0	0	0	0
BALANCING NYCA	5,435	9,085	14,700	37,885	36,763	40,313	35,236
BALANCING NON-NYCA	6,402	9,117	4,290	1,920	2,640	1,400	861
BALANCING WHEELS	(1,562)	(1,590)	(1,844)	(1,114)	(1,409)	(900)	(1,499)
BALANCING VIRTUAL	0	0	0	0	0	0	0
LOSSES	8,298	7,209	8,030	8,023	8,224	8,308	9,508
	24	25	26	27	28	29	30
DAM NYCA	409,939	403,416	381,061	387,066	383,850	331,286	328,879
DAM NON-NYCA	28,839	16,448	15,547	13,652	10,898	16,384	15,941
DAM WHEELS	5,100	5,907	5,986	10,925	10,340	9,723	15,351
DAM VIRTUAL	0	0	0	0	0	0	0
BALANCING NYCA	36,193	31,750	13,263	2,404	5,263	16,799	10,294
BALANCING NON-NYCA	2,548	3,874	7,819	3,062	2,127	3,217	5,731
BALANCING WHEELS	(650)	(1,624)	(1,935)	(6,025)	(5,175)	(755)	(6,525)
BALANCING VIRTUAL	0	0	0	0	0	0	0
LOSSES	9,391	8,536	7,603	8,414	8,687	7,392	7,005



SETTLEMENTS REPORT
ATTACHMENT E: SEPTEMBER 2001 CLOSEOUT SETTLEMENT
OCTOBER 27, 2005

CLOSEOUT SETTLEMENT MARKET WITHDRAWALS ANALYSIS

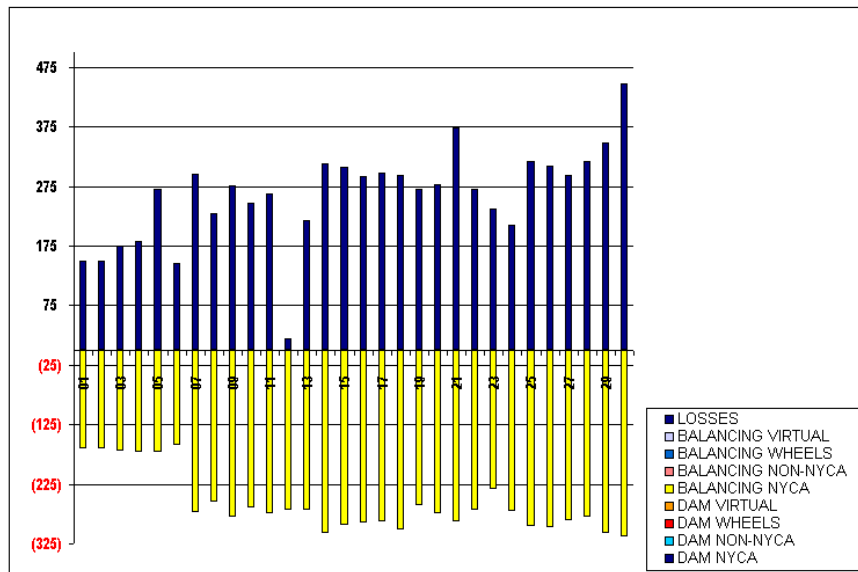
	MONDAY	TUESDAY	WEDNESDAY	THURSDAY	FRIDAY	SATURDAY	SUNDAY
DAM NYCA						1	2
DAM NON-NYCA						388,695	388,695
DAM WHEELS						5,457	5,457
DAM VIRTUAL						8,200	8,200
BALANCING NYCA						0	0
BALANCING NON-NYCA						23,145	23,145
BALANCING WHEELS						671	671
BALANCING VIRTUAL						(1,800)	(1,800)
LOSSES						0	0
						10,504	10,504
	3	4	5	6	7	8	9
DAM NYCA	365,760	439,736	444,012	450,563	442,554	406,113	380,860
DAM NON-NYCA	5,154	20,180	16,780	16,546	19,651	14,596	9,556
DAM WHEELS	9,100	4,446	4,000	3,000	3,750	11,575	7,600
DAM VIRTUAL	0	0	0	0	0	0	0
BALANCING NYCA	2,528	12,185	(6,961)	(17,019)	11,493	30,783	56,128
BALANCING NON-NYCA	3,887	2,496	1,202	1,190	2,486	960	1,260
BALANCING WHEELS	(2,353)	0	(1,200)	(1,793)	(1,200)	(2,163)	(1,200)
BALANCING VIRTUAL	0	0	0	0	0	0	0
LOSSES	8,004	9,084	8,791	7,275	8,670	8,695	8,877
	10	11	12	13	14	15	16
DAM NYCA	454,301	439,602	429,572	420,605	398,417	343,332	334,321
DAM NON-NYCA	16,023	15,163	13,157	5,335	4,935	14,251	15,919
DAM WHEELS	8,400	8,600	4,150	4,800	9,821	12,375	12,200
DAM VIRTUAL	0	0	0	0	0	0	0
BALANCING NYCA	44,691	396	(450)	22,056	3,799	8,220	8,459
BALANCING NON-NYCA	1,358	4,255	9,067	6,785	9,189	2,279	1,914
BALANCING WHEELS	(1,592)	(3,850)	(1,150)	(1,200)	(1,625)	(1,575)	(2,210)
BALANCING VIRTUAL	0	0	0	0	0	0	0
LOSSES	8,923	8,192	4,771	7,271	3,930	5,183	6,722
	17	18	19	20	21	22	23
DAM NYCA	400,435	403,516	406,496	395,967	400,528	355,733	342,552
DAM NON-NYCA	6,481	8,703	7,380	20,785	15,790	16,002	15,199
DAM WHEELS	5,553	6,425	6,214	4,414	5,196	7,550	9,920
DAM VIRTUAL	0	0	0	0	0	0	0
BALANCING NYCA	5,147	8,784	14,439	37,591	36,475	40,045	35,002
BALANCING NON-NYCA	6,402	9,117	4,290	1,920	2,640	1,400	861
BALANCING WHEELS	(1,562)	(1,590)	(1,844)	(1,114)	(1,409)	(900)	(1,499)
BALANCING VIRTUAL	0	0	0	0	0	0	0
LOSSES	8,597	7,503	8,301	8,301	8,597	8,579	9,745
	24	25	26	27	28	29	30
DAM NYCA	409,939	403,416	381,061	387,066	383,850	331,286	328,879
DAM NON-NYCA	28,839	16,448	15,547	13,652	10,898	16,384	15,941
DAM WHEELS	5,100	5,907	5,986	10,925	10,340	9,723	15,351
DAM VIRTUAL	0	0	0	0	0	0	0
BALANCING NYCA	35,922	31,454	12,969	2,118	4,984	16,492	9,981
BALANCING NON-NYCA	2,548	3,874	7,819	3,062	2,127	3,217	5,731
BALANCING WHEELS	(650)	(1,624)	(1,935)	(6,025)	(6,175)	(755)	(6,525)
BALANCING VIRTUAL	0	0	0	0	0	0	0
LOSSES	9,600	8,852	7,913	8,708	9,003	7,741	7,453



SETTLEMENTS REPORT
ATTACHMENT E: SEPTEMBER 2001 CLOSEOUT SETTLEMENT
OCTOBER 27, 2005

CLOSEOUT SETTLEMENT MARKET WITHDRAWALS DELTA ANALYSIS

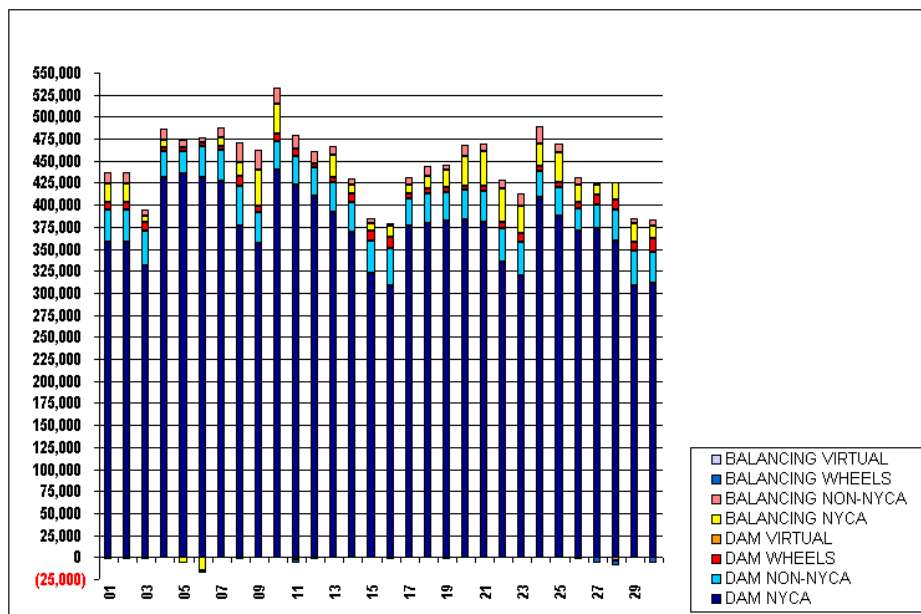
	MONDAY	TUESDAY	WEDNESDAY	THURSDAY	FRIDAY	SATURDAY	SUNDAY
						1	2
DAM NYCA						0	0
DAM NON-NYCA						0	0
DAM WHEELS						0	0
DAM VIRTUAL						0	0
BALANCING NYCA						(165)	(165)
BALANCING NON-NYCA						0	0
BALANCING WHEELS						0	0
BALANCING VIRTUAL						0	0
LOSSES						150	150
	3	4	5	6	7	8	9
DAM NYCA	0	0	0	0	0	0	0
DAM NON-NYCA	0	0	0	0	0	0	0
DAM WHEELS	0	0	0	0	0	0	0
DAM VIRTUAL	0	0	0	0	0	0	0
BALANCING NYCA	(169)	(171)	(171)	(160)	(273)	(254)	(281)
BALANCING NON-NYCA	0	0	0	0	0	0	0
BALANCING WHEELS	0	0	0	0	0	0	0
BALANCING VIRTUAL	0	0	0	0	0	0	0
LOSSES	175	183	270	146	296	230	276
	10	11	12	13	14	15	16
DAM NYCA	0	0	0	0	0	0	0
DAM NON-NYCA	0	0	0	0	0	0	0
DAM WHEELS	0	0	0	0	0	0	0
DAM VIRTUAL	0	0	0	0	0	0	0
BALANCING NYCA	(265)	(274)	(268)	(268)	(307)	(293)	(290)
BALANCING NON-NYCA	0	0	0	0	0	0	0
BALANCING WHEELS	0	0	0	0	0	0	0
BALANCING VIRTUAL	0	0	0	0	0	0	0
LOSSES	247	263	20	217	314	307	292
	17	18	19	20	21	22	23
DAM NYCA	0	0	0	0	0	0	0
DAM NON-NYCA	0	0	0	0	0	0	0
DAM WHEELS	0	0	0	0	0	0	0
DAM VIRTUAL	0	0	0	0	0	0	0
BALANCING NYCA	(287)	(301)	(260)	(274)	(288)	(268)	(233)
BALANCING NON-NYCA	0	0	0	0	0	0	0
BALANCING WHEELS	0	0	0	0	0	0	0
BALANCING VIRTUAL	0	0	0	0	0	0	0
LOSSES	298	294	271	278	373	270	287
	24	25	26	27	28	29	30
DAM NYCA	0	0	0	0	0	0	0
DAM NON-NYCA	0	0	0	0	0	0	0
DAM WHEELS	0	0	0	0	0	0	0
DAM VIRTUAL	0	0	0	0	0	0	0
BALANCING NYCA	(271)	(296)	(298)	(286)	(280)	(307)	(213)
BALANCING NON-NYCA	0	0	0	0	0	0	0
BALANCING WHEELS	0	0	0	0	0	0	0
BALANCING VIRTUAL	0	0	0	0	0	0	0
LOSSES	209	316	310	294	316	349	448



SETTLEMENTS REPORT
ATTACHMENT E: SEPTEMBER 2001 CLOSEOUT SETTLEMENT
OCTOBER 27, 2005

24-MONTH SETTLEMENT ADJUSTMENT MARKET SUPPLY ANALYSIS

	MONDAY	TUESDAY	WEDNESDAY	THURSDAY	FRIDAY	SATURDAY	SUNDAY
						1	2
DAM NYCA						367,992	367,992
DAM NON-NYCA						36,868	36,868
DAM WHEELS						8,200	8,200
DAM VIRTUAL						0	0
BALANCING NYCA						20,821	20,821
BALANCING NON-NYCA						12,658	12,658
BALANCING WHEELS						(1,800)	(1,800)
BALANCING VIRTUAL						0	0
	3	4	5	6	7	8	9
DAM NYCA	330,650	431,338	435,801	431,146	426,848	376,804	355,748
DAM NON-NYCA	40,495	29,555	25,237	36,156	35,362	44,043	35,519
DAM WHEELS	9,100	4,446	4,000	3,000	3,750	11,575	7,600
DAM VIRTUAL	0	0	0	0	0	0	0
BALANCING NYCA	6,589	8,204	(6,062)	(15,518)	9,912	16,414	40,250
BALANCING NON-NYCA	7,293	13,531	8,450	6,472	11,916	22,010	23,470
BALANCING WHEELS	(2,353)	0	(1,200)	(1,793)	(1,200)	(2,163)	(1,200)
BALANCING VIRTUAL	0	0	0	0	0	0	0
	10	11	12	13	14	15	16
DAM NYCA	439,981	423,352	409,514	391,535	368,577	321,895	308,462
DAM NON-NYCA	32,987	32,428	33,243	34,411	34,864	36,853	42,406
DAM WHEELS	8,400	8,600	4,150	4,800	9,821	12,375	12,200
DAM VIRTUAL	0	0	0	0	0	0	0
BALANCING NYCA	33,415	(2,718)	(1,374)	25,462	9,103	7,255	12,823
BALANCING NON-NYCA	17,981	15,206	14,782	10,445	7,170	6,958	3,591
BALANCING WHEELS	(1,592)	(3,850)	(1,150)	(1,200)	(1,625)	(1,575)	(2,210)
BALANCING VIRTUAL	0	0	0	0	0	0	0
	17	18	19	20	21	22	23
DAM NYCA	376,136	379,720	381,212	383,584	380,370	335,361	320,145
DAM NON-NYCA	31,811	32,663	32,729	33,212	36,073	37,520	37,992
DAM WHEELS	5,553	6,425	6,214	4,414	5,196	7,550	9,920
DAM VIRTUAL	0	0	0	0	0	0	0
BALANCING NYCA	9,046	13,602	20,298	34,337	38,867	37,990	30,268
BALANCING NON-NYCA	9,208	11,145	5,657	12,652	8,336	10,535	14,251
BALANCING WHEELS	(1,562)	(1,590)	(1,844)	(1,114)	(1,409)	(900)	(1,499)
BALANCING VIRTUAL	0	0	0	0	0	0	0
	24	25	26	27	28	29	30
DAM NYCA	408,346	388,165	370,426	374,058	359,259	308,862	311,456
DAM NON-NYCA	30,403	31,707	26,184	26,711	35,607	38,869	35,012
DAM WHEELS	5,100	5,907	5,986	10,925	10,340	9,723	15,351
DAM VIRTUAL	0	0	0	0	0	0	0
BALANCING NYCA	26,282	34,278	20,702	11,259	19,989	22,175	15,097
BALANCING NON-NYCA	19,554	9,748	7,936	2,570	(4,330)	5,172	5,986
BALANCING WHEELS	(650)	(1,624)	(1,935)	(6,025)	(5,175)	(755)	(6,525)
BALANCING VIRTUAL	0	0	0	0	0	0	0

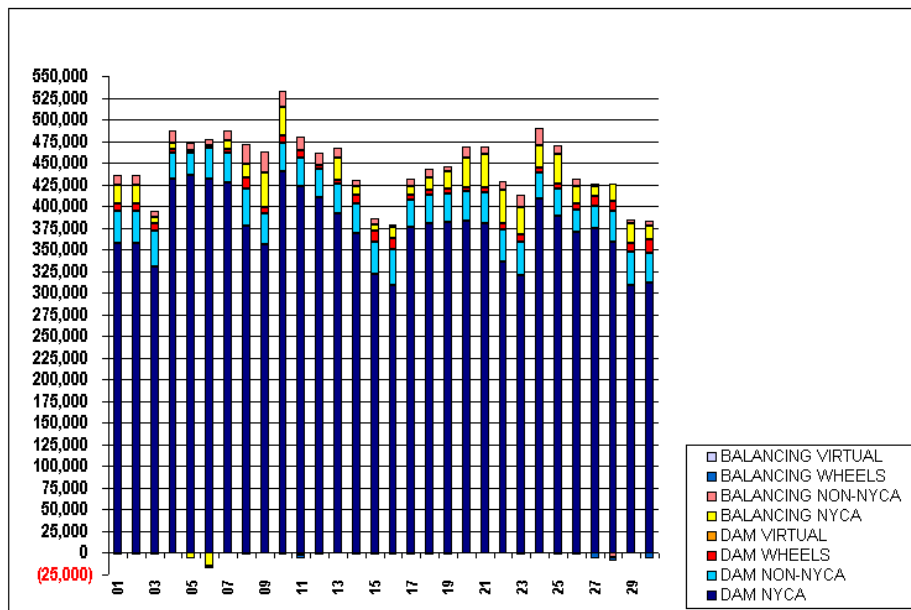


FOR DISCUSSION PURPOSES ONLY

SETTLEMENTS REPORT
ATTACHMENT E: SEPTEMBER 2001 CLOSEOUT SETTLEMENT
OCTOBER 27, 2005

CLOSEOUT SETTLEMENT MARKET SUPPLY ANALYSIS

	HONDAY	TUESDAY	WEDNESDAY	THURSDAY	FRIDAY	SATURDAY	SUNDAY
DAM NYCA						357,992	357,992
DAM NON-NYCA						36,868	36,868
DAM WHEELS						8,200	8,200
DAM VIRTUAL						0	0
BALANCING NYCA						20,805	20,805
BALANCING NON-NYCA						12,658	12,658
BALANCING WHEELS						(1,800)	(1,800)
BALANCING VIRTUAL						0	0
	3	4	5	6	7	8	9
DAM NYCA	330,650	431,338	435,801	431,146	426,848	376,804	355,748
DAM NON-NYCA	40,495	29,555	25,237	36,156	35,362	44,043	35,519
DAM WHEELS	9,100	4,446	4,000	3,000	3,750	11,575	7,600
DAM VIRTUAL	0	0	0	0	0	0	0
BALANCING NYCA	6,595	8,216	(5,964)	(15,532)	9,935	16,390	40,245
BALANCING NON-NYCA	7,293	13,631	8,450	6,472	11,916	22,010	23,470
BALANCING WHEELS	(2,353)	0	(1,200)	(1,793)	(1,200)	(2,163)	(1,200)
BALANCING VIRTUAL	0	0	0	0	0	0	0
	10	11	12	13	14	15	16
DAM NYCA	439,981	423,352	409,514	391,535	368,577	321,895	308,462
DAM NON-NYCA	32,987	32,428	33,243	34,411	34,864	36,853	42,406
DAM WHEELS	8,400	8,600	4,150	4,800	9,821	12,375	12,200
DAM VIRTUAL	0	0	0	0	0	0	0
BALANCING NYCA	33,397	(2,729)	(1,622)	25,411	9,110	7,269	12,826
BALANCING NON-NYCA	17,981	15,206	14,782	10,445	7,170	6,958	3,591
BALANCING WHEELS	(1,592)	(3,850)	(1,150)	(1,200)	(1,625)	(1,575)	(2,210)
BALANCING VIRTUAL	0	0	0	0	0	0	0
	17	18	19	20	21	22	23
DAM NYCA	376,136	379,720	381,212	383,584	380,370	335,361	320,145
DAM NON-NYCA	31,811	32,663	32,729	33,212	36,073	37,520	37,992
DAM WHEELS	5,553	6,425	6,214	4,414	5,196	7,550	9,920
DAM VIRTUAL	0	0	0	0	0	0	0
BALANCING NYCA	9,057	13,695	20,308	34,341	38,951	37,993	30,272
BALANCING NON-NYCA	9,208	11,145	5,657	12,552	8,336	10,535	14,251
BALANCING WHEELS	(1,562)	(1,590)	(1,844)	(1,114)	(1,409)	(900)	(1,499)
BALANCING VIRTUAL	0	0	0	0	0	0	0
	24	25	26	27	28	29	30
DAM NYCA	408,346	388,165	370,426	374,058	359,259	308,862	311,456
DAM NON-NYCA	30,403	31,707	26,184	26,711	35,607	38,869	35,012
DAM WHEELS	5,100	5,907	5,986	10,925	10,340	9,723	15,351
DAM VIRTUAL	0	0	0	0	0	0	0
BALANCING NYCA	26,220	34,299	20,713	11,267	20,026	22,217	15,232
BALANCING NON-NYCA	19,554	9,748	7,936	2,570	(4,330)	5,172	5,986
BALANCING WHEELS	(650)	(1,624)	(1,935)	(6,025)	(5,175)	(755)	(6,525)
BALANCING VIRTUAL	0	0	0	0	0	0	0



FOR DISCUSSION PURPOSES ONLY

SETTLEMENTS REPORT
ATTACHMENT E: SEPTEMBER 2001 CLOSEOUT SETTLEMENT
OCTOBER 27, 2005

CLOSEOUT SETTLEMENT MARKET SUPPLY DELTA ANALYSIS

	MONDAY	TUESDAY	WEDNESDAY	THURSDAY	FRIDAY	SATURDAY	SUNDAY
						1	2
DAM NYCA						0	0
DAM NON-NYCA						0	0
DAM WHEELS						0	0
DAM VIRTUAL						0	0
BALANCING NYCA						(16)	(16)
BALANCING NON-NYCA						0	0
BALANCING WHEELS						0	0
BALANCING VIRTUAL						0	0
	3	4	5	6	7	8	9
DAM NYCA	0	0	0	0	0	0	0
DAM NON-NYCA	0	0	0	0	0	0	0
DAM WHEELS	0	0	0	0	0	0	0
DAM VIRTUAL	0	0	0	0	0	0	0
BALANCING NYCA	6	12	98	(14)	23	(24)	(5)
BALANCING NON-NYCA	0	0	0	0	0	0	0
BALANCING WHEELS	0	0	0	0	0	0	0
BALANCING VIRTUAL	0	0	0	0	0	0	0
	10	11	12	13	14	15	16
DAM NYCA	0	0	0	0	0	0	0
DAM NON-NYCA	0	0	0	0	0	0	0
DAM WHEELS	0	0	0	0	0	0	0
DAM VIRTUAL	0	0	0	0	0	0	0
BALANCING NYCA	(18)	(11)	(248)	(61)	7	14	3
BALANCING NON-NYCA	0	0	0	0	0	0	0
BALANCING WHEELS	0	0	0	0	0	0	0
BALANCING VIRTUAL	0	0	0	0	0	0	0
	17	18	19	20	21	22	23
DAM NYCA	0	0	0	0	0	0	0
DAM NON-NYCA	0	0	0	0	0	0	0
DAM WHEELS	0	0	0	0	0	0	0
DAM VIRTUAL	0	0	0	0	0	0	0
BALANCING NYCA	11	(7)	10	4	85	2	4
BALANCING NON-NYCA	0	0	0	0	0	0	0
BALANCING WHEELS	0	0	0	0	0	0	0
BALANCING VIRTUAL	0	0	0	0	0	0	0
	24	25	26	27	28	29	30
DAM NYCA	0	0	0	0	0	0	0
DAM NON-NYCA	0	0	0	0	0	0	0
DAM WHEELS	0	0	0	0	0	0	0
DAM VIRTUAL	0	0	0	0	0	0	0
BALANCING NYCA	(62)	21	11	7	36	42	135
BALANCING NON-NYCA	0	0	0	0	0	0	0
BALANCING WHEELS	0	0	0	0	0	0	0
BALANCING VIRTUAL	0	0	0	0	0	0	0

