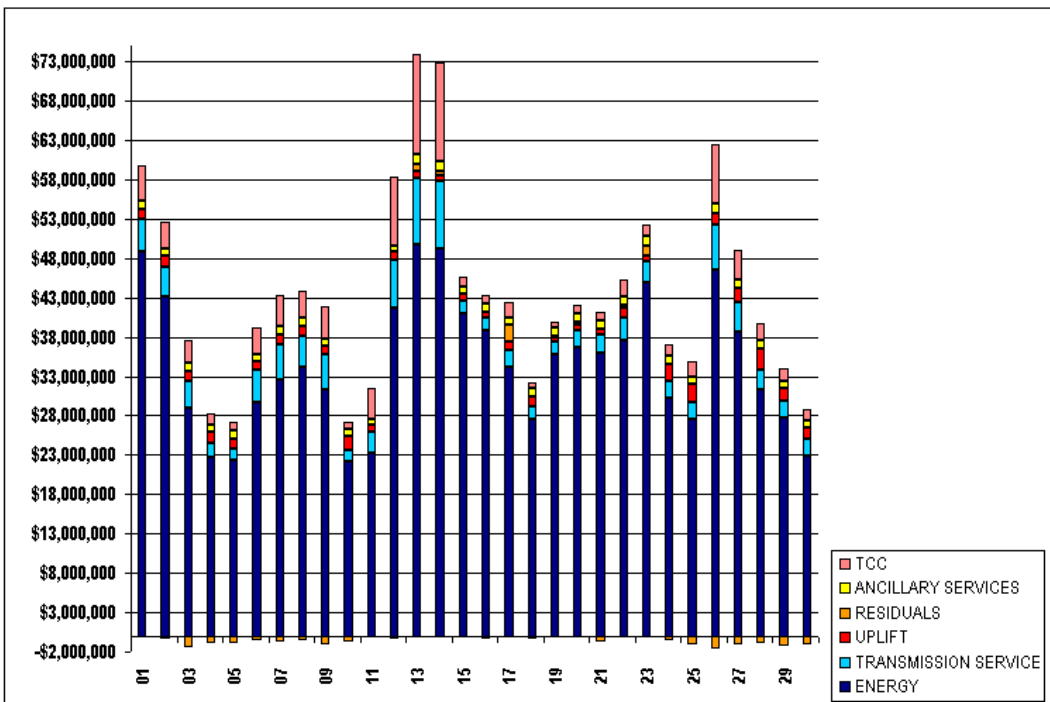


SETTLEMENTS REPORT
ATTACHMENT A: SEPTEMBER 2005 INITIAL SETTLEMENT
OCTOBER 21, 2005

INITIAL SETTLEMENT MARKET COSTS

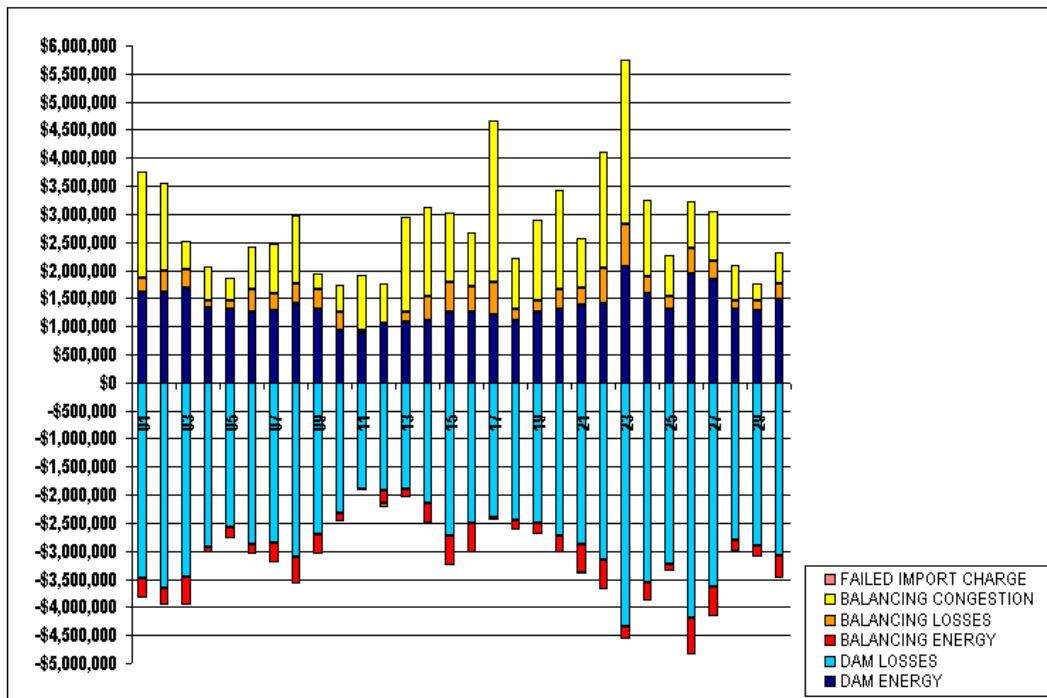
	MONDAY	TUESDAY	WEDNESDAY	THURSDAY	FRIDAY	SATURDAY	SUNDAY
				1	2	3	4
ENERGY				\$48,821,266.46	\$43,170,775.72	\$29,027,450.05	\$22,744,706.34
TRANSMISSION SERVICE				\$4,238,164.12	\$3,711,837.14	\$3,277,499.87	\$1,708,038.15
UPLIFT				\$1,203,760.39	\$1,363,859.65	\$1,413,791.94	\$1,493,294.16
RESIDUALS				(\$84,334.01)	(\$406,588.39)	(\$1,445,737.16)	(\$974,764.60)
ANCILLARY SERVICES				\$1,030,938.08	\$1,037,630.88	\$1,066,746.66	\$885,662.09
TCC				\$4,660,517.84	\$3,266,926.95	\$2,841,761.64	\$1,447,169.99
	5	6	7	8	9	10	11
ENERGY	\$22,275,401.46	\$29,766,978.41	\$32,485,915.26	\$34,211,631.74	\$31,259,853.36	\$22,155,038.38	\$23,210,391.34
TRANSMISSION SERVICE	\$1,469,736.35	\$4,104,510.42	\$4,592,395.86	\$3,916,415.35	\$4,448,747.24	\$1,449,313.74	\$2,703,700.52
UPLIFT	\$1,312,570.82	\$941,243.98	\$1,235,662.56	\$1,312,467.51	\$1,130,686.14	\$1,856,752.34	\$869,459.54
RESIDUALS	(\$913,551.67)	(\$633,549.19)	(\$737,203.95)	(\$619,969.83)	(\$1,109,478.22)	(\$723,171.41)	(\$10,246.13)
ANCILLARY SERVICES	\$1,035,336.51	\$1,022,034.71	\$1,058,284.00	\$1,038,018.52	\$955,922.52	\$903,814.74	\$842,506.32
TCC	\$1,041,996.88	\$3,415,623.02	\$3,869,772.36	\$3,372,438.47	\$4,035,622.24	\$864,463.39	\$3,890,843.06
	12	13	14	15	16	17	18
ENERGY	\$41,611,158.98	\$49,668,425.22	\$49,164,694.74	\$40,887,499.81	\$38,834,235.77	\$34,123,988.88	\$27,565,753.07
TRANSMISSION SERVICE	\$6,162,965.74	\$8,490,550.69	\$8,597,779.93	\$1,785,383.50	\$1,608,888.57	\$2,169,701.98	\$1,588,047.03
UPLIFT	\$1,001,435.60	\$926,118.97	\$678,389.84	\$758,269.43	\$778,520.63	\$1,076,186.97	\$1,302,626.88
RESIDUALS	(\$444,484.26)	\$905,099.22	\$627,117.61	(\$234,886.22)	(\$340,908.84)	\$2,207,829.96	(\$412,774.35)
ANCILLARY SERVICES	\$883,615.78	\$1,180,833.96	\$1,193,086.00	\$1,020,542.25	\$1,058,075.91	\$813,451.00	\$969,056.23
TCC	\$8,725,985.13	\$12,742,790.88	\$12,569,631.60	\$1,182,363.08	\$940,413.42	\$2,041,808.07	\$816,400.83
	19	20	21	22	23	24	25
ENERGY	\$35,704,004.99	\$36,615,908.08	\$35,949,884.52	\$37,625,152.56	\$44,889,251.29	\$30,224,626.06	\$27,480,238.68
TRANSMISSION SERVICE	\$1,715,869.73	\$2,166,572.03	\$2,286,346.73	\$2,897,167.11	\$2,672,050.87	\$2,178,422.77	\$2,170,379.46
UPLIFT	\$564,475.43	\$775,494.18	\$748,596.26	\$1,181,024.12	\$799,318.20	\$2,139,032.12	\$2,291,438.04
RESIDUALS	\$216,085.45	\$394,495.37	(\$827,531.25)	\$420,814.93	\$1,201,816.47	(\$630,740.15)	(\$1,102,342.26)
ANCILLARY SERVICES	\$979,004.80	\$974,103.94	\$1,098,595.04	\$1,060,328.29	\$1,178,804.35	\$1,046,044.70	\$977,980.99
TCC	\$641,399.27	\$1,116,491.64	\$998,392.26	\$2,004,891.52	\$1,514,246.67	\$1,417,639.02	\$2,026,045.22
	26	27	28	29	30		
ENERGY	\$46,604,352.65	\$38,728,941.15	\$31,360,818.82	\$27,658,424.53	\$22,922,342.84		
TRANSMISSION SERVICE	\$5,660,457.46	\$3,606,336.68	\$2,478,641.77	\$2,261,162.16	\$2,085,371.84		
UPLIFT	\$1,366,450.15	\$1,809,053.06	\$2,657,107.03	\$1,511,674.55	\$1,378,559.98		
RESIDUALS	(\$1,611,136.43)	(\$1,126,718.69)	(\$905,610.97)	(\$1,333,952.10)	(\$1,183,530.81)		
ANCILLARY SERVICES	\$1,324,226.60	\$1,165,170.79	\$1,014,134.98	\$920,642.72	\$1,017,608.32		
TCC	\$7,482,950.77	\$3,777,450.87	\$2,281,316.13	\$1,631,093.71	\$1,460,681.66		



SETTLEMENTS REPORT
ATTACHMENT A: SEPTEMBER 2005 INITIAL SETTLEMENT
OCTOBER 21, 2005

INITIAL SETTLEMENT MARKET RESIDUALS

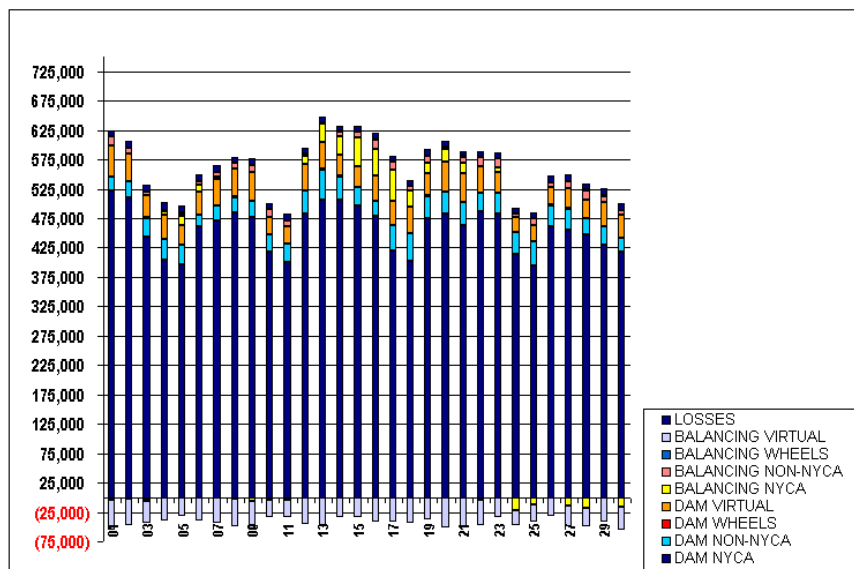
	MONDAY	TUESDAY	WEDNESDAY	THURSDAY	FRIDAY	SATURDAY	SUNDAY
				1	2	3	4
DAM ENERGY				\$1,602,419.00	\$1,612,212.75	\$1,687,626.73	\$1,327,232.02
DAM LOSSES				(\$3,486,392.19)	(\$3,660,103.65)	(\$3,466,928.20)	(\$2,921,306.71)
BALANCING ENERGY				(\$552,723.45)	(\$299,128.36)	(\$493,003.19)	(\$109,662.09)
BALANCING LOSSES				\$256,705.95	\$366,120.78	\$338,110.72	\$133,516.77
BALANCING CONGESTION				\$1,887,009.44	\$1,570,463.14	\$488,667.48	\$596,911.16
FAILED IMPORT CHARGE				(\$1.29)	(\$3,427.50)	(\$856.74)	(\$2,925.22)
	5	6	7	8	9	10	11
DAM ENERGY	\$1,310,827.24	\$1,269,199.92	\$1,286,515.77	\$1,399,168.22	\$1,299,568.49	\$925,932.63	\$868,716.32
DAM LOSSES	(\$2,568,677.81)	(\$2,887,184.60)	(\$2,849,909.05)	(\$3,099,517.00)	(\$2,708,278.13)	(\$2,324,665.01)	(\$1,891,687.23)
BALANCING ENERGY	(\$203,711.85)	(\$159,140.27)	(\$362,417.42)	(\$492,626.69)	(\$346,526.57)	(\$142,385.71)	(\$32,610.99)
BALANCING LOSSES	\$137,513.22	\$390,556.37	\$298,331.79	\$364,831.51	\$356,450.82	\$328,199.63	\$69,652.09
BALANCING CONGESTION	\$421,822.85	\$753,231.96	\$888,895.82	\$1,200,788.57	\$288,750.90	\$487,816.77	\$972,976.55
FAILED IMPORT CHARGE	(\$12,028.72)	(\$884.00)	(\$70.26)	\$0.00	(\$967.24)	(\$875.02)	\$0.00
	12	13	14	15	16	17	18
DAM ENERGY	\$1,066,744.43	\$1,082,251.61	\$1,101,576.46	\$1,249,854.31	\$1,267,241.18	\$1,209,777.36	\$1,104,251.86
DAM LOSSES	(\$1,918,483.83)	(\$1,903,041.93)	(\$2,136,866.48)	(\$2,741,956.75)	(\$2,511,643.43)	(\$2,405,849.69)	(\$2,458,881.78)
BALANCING ENERGY	(\$218,118.41)	(\$146,809.43)	(\$353,845.21)	(\$523,974.26)	(\$513,902.45)	(\$58,170.25)	(\$165,369.06)
BALANCING LOSSES	(\$89,500.26)	\$170,291.05	\$435,652.94	\$526,509.99	\$453,622.79	\$577,514.11	\$198,706.85
BALANCING CONGESTION	\$695,164.20	\$1,691,535.04	\$1,575,653.36	\$1,250,807.16	\$955,964.30	\$2,867,844.64	\$907,589.65
FAILED IMPORT CHARGE	(\$1,337.39)	(\$530.15)	(\$2,329.74)	\$0.00	(\$50.74)	\$0.00	(\$367.60)
	19	20	21	22	23	24	25
DAM ENERGY	\$1,257,690.63	\$1,306,516.35	\$1,374,093.78	\$1,410,785.10	\$2,056,618.82	\$1,596,800.46	\$1,319,581.09
DAM LOSSES	(\$2,507,320.41)	(\$2,737,646.73)	(\$2,873,522.87)	(\$3,153,113.11)	(\$4,348,674.70)	(\$3,557,096.04)	(\$3,239,674.90)
BALANCING ENERGY	(\$188,036.69)	(\$292,799.23)	(\$509,397.27)	(\$540,109.52)	(\$212,569.68)	(\$320,495.57)	(\$119,338.62)
BALANCING LOSSES	\$205,657.21	\$341,954.06	\$303,905.73	\$618,188.12	\$759,265.51	\$284,256.98	\$213,764.28
BALANCING CONGESTION	\$1,438,334.28	\$1,772,414.04	\$894,589.92	\$2,078,734.05	\$2,933,490.07	\$1,367,521.52	\$721,491.73
FAILED IMPORT CHARGE	\$0.00	(\$258.62)	(\$24,755.60)	(\$169.98)	(\$1,343.83)	(\$3,200.05)	\$0.00
	26	27	28	29	30		
DAM ENERGY	\$1,930,575.85	\$1,835,729.00	\$1,308,488.44	\$1,273,193.07	\$1,493,675.68		
DAM LOSSES	(\$4,182,451.42)	(\$3,644,610.50)	(\$2,815,152.77)	(\$2,911,363.21)	(\$3,090,296.96)		
BALANCING ENERGY	(\$660,550.52)	(\$529,652.64)	(\$187,192.71)	(\$193,351.28)	(\$385,189.57)		
BALANCING LOSSES	\$471,583.86	\$323,299.29	\$152,595.55	\$187,625.02	\$262,628.31		
BALANCING CONGESTION	\$818,957.14	\$886,778.85	\$632,456.02	\$313,020.34	\$557,929.06		
FAILED IMPORT CHARGE	(\$552.43)	(\$41.81)	(\$6.25)	(\$5,999.75)	(\$23,199.58)		



SETTLEMENTS REPORT
ATTACHMENT A: SEPTEMBER 2005 INITIAL SETTLEMENT
OCTOBER 21, 2005

INITIAL SETTLEMENT WITHDRAWALS

	MONDAY	TUESDAY	WEDNESDAY	THURSDAY	FRIDAY	SATURDAY	SUNDAY
				1	2	3	4
DAM NYCA				521,259	509,389	442,706	405,008
DAM NON-NYCA				24,039	28,109	32,174	34,828
DAM WHEELS				1,350	1,295	2,182	200
DAM VIRTUAL				52,028	46,232	36,616	40,220
BALANCING NYCA				(3,566)	(1,545)	(4,965)	5,623
BALANCING NON-NYCA				15,098	9,464	6,209	2,008
BALANCING WHEELS				704	(282)	(1,466)	445
BALANCING VIRTUAL				(52,028)	(46,232)	(36,616)	(40,220)
LOSSES				10,510	11,498	12,747	14,097
	5	6	7	8	9	10	11
DAM NYCA	395,500	461,617	471,778	484,353	476,300	418,075	400,162
DAM NON-NYCA	34,111	19,174	25,290	26,463	27,512	29,016	30,774
DAM WHEELS	400	0	0	600	1,100	1,329	0
DAM VIRTUAL	32,361	39,138	44,138	47,589	48,579	29,028	30,268
BALANCING NYCA	17,328	11,926	4,111	(1,662)	(6,298)	(4,092)	(4,144)
BALANCING NON-NYCA	3,484	6,053	9,236	11,055	12,075	13,026	10,230
BALANCING WHEELS	711	0	0	(150)	(410)	(300)	0
BALANCING VIRTUAL	(22,361)	(39,138)	(44,138)	(47,589)	(48,579)	(29,028)	(30,268)
LOSSES	13,390	11,143	9,968	8,877	11,286	10,493	10,618
	12	13	14	15	16	17	18
DAM NYCA	482,507	507,069	507,398	496,727	479,191	419,061	402,063
DAM NON-NYCA	40,048	50,074	39,221	31,555	25,692	43,287	47,533
DAM WHEELS	0	1,400	1,800	0	0	0	0
DAM VIRTUAL	44,649	46,801	34,462	34,229	42,248	42,305	44,317
BALANCING NYCA	14,621	30,112	30,656	50,564	46,651	53,451	27,359
BALANCING NON-NYCA	2,236	2,284	9,099	8,347	14,967	12,584	7,810
BALANCING WHEELS	200	0	1,664	1,800	1,818	900	875
BALANCING VIRTUAL	(44,649)	(46,801)	(34,462)	(34,229)	(42,248)	(42,305)	(44,317)
LOSSES	9,889	9,689	8,680	9,507	9,021	8,693	10,751
	19	20	21	22	23	24	25
DAM NYCA	474,618	483,655	463,954	486,771	482,894	414,797	394,267
DAM NON-NYCA	37,589	36,362	38,234	31,001	35,216	36,416	40,583
DAM WHEELS	1,200	0	0	0	0	0	0
DAM VIRTUAL	37,780	60,887	48,487	45,048	34,486	26,039	27,769
BALANCING NYCA	18,429	20,979	19,316	(3,322)	8,347	(22,097)	(13,067)
BALANCING NON-NYCA	11,486	5,478	9,712	16,007	15,375	5,467	11,781
BALANCING WHEELS	685	50	598	1,102	845	0	0
BALANCING VIRTUAL	(37,780)	(60,887)	(48,487)	(45,048)	(34,486)	(26,039)	(27,769)
LOSSES	10,366	9,611	9,172	9,116	9,648	10,389	11,174
	26	27	28	29	30		
DAM NYCA	462,007	455,760	446,853	430,697	418,638		
DAM NON-NYCA	35,538	35,550	27,311	30,664	23,288		
DAM WHEELS	200	625	472	275	0		
DAM VIRTUAL	29,774	34,917	31,458	41,731	38,591		
BALANCING NYCA	(1,206)	(13,843)	(18,894)	(223)	(16,966)		
BALANCING NON-NYCA	8,284	11,533	16,620	8,180	9,059		
BALANCING WHEELS	675	(248)	930	3,140	0		
BALANCING VIRTUAL	(29,774)	(34,917)	(31,458)	(41,731)	(38,591)		
LOSSES	10,299	10,379	9,933	11,198	11,828		



SETTLEMENTS REPORT
ATTACHMENT A: SEPTEMBER 2005 INITIAL SETTLEMENT
OCTOBER 21, 2005

INITIAL SETTLEMENT SUPPLY

	MONDAY	TUESDAY	WEDNESDAY	THURSDAY	FRIDAY	SATURDAY	SUNDAY
				1	2	3	4
DAM NYCA				499,383	486,845	391,976	356,139
DAM NON-NYCA				65,292	63,513	84,641	83,493
DAM WHEELS				1,350	1,295	2,182	200
DAM VIRTUAL				46,814	47,839	53,240	56,598
BALANCING NYCA				(3,667)	(2,939)	14,103	14,113
BALANCING NON-NYCA				6,262	9,377	(1,740)	7,819
BALANCING WHEELS				704	(232)	(1,466)	445
BALANCING VIRTUAL				(46,814)	(47,839)	(53,240)	(56,598)
	5	6	7	8	9	10	11
DAM NYCA	351,201	411,166	433,350	454,997	448,224	381,616	370,425
DAM NON-NYCA	78,958	76,713	74,450	68,241	62,665	63,665	59,149
DAM WHEELS	400	0	0	600	1,100	1,329	0
DAM VIRTUAL	47,677	45,701	47,274	50,058	56,234	42,407	42,358
BALANCING NYCA	23,186	34,813	21,673	6,640	7,257	17,225	9,983
BALANCING NON-NYCA	10,468	(12,779)	(9,099)	(793)	2,672	3,977	3,082
BALANCING WHEELS	711	0	0	(150)	(410)	(300)	0
BALANCING VIRTUAL	(47,677)	(45,701)	(47,274)	(50,058)	(56,234)	(42,407)	(42,358)
	12	13	14	15	16	17	18
DAM NYCA	476,376	512,168	504,741	477,109	440,678	392,090	390,479
DAM NON-NYCA	56,295	53,684	57,038	54,291	63,462	77,773	71,296
DAM WHEELS	0	1,400	1,800	0	0	0	0
DAM VIRTUAL	45,699	49,944	31,232	44,001	55,565	48,190	44,262
BALANCING NYCA	17,566	38,649	44,095	58,503	70,517	70,338	30,923
BALANCING NON-NYCA	(927)	(6,274)	(10,821)	6,797	765	(3,126)	2,858
BALANCING WHEELS	200	0	1,664	1,800	1,818	900	875
BALANCING VIRTUAL	(45,699)	(49,944)	(31,232)	(44,001)	(55,565)	(48,190)	(44,262)
	19	20	21	22	23	24	25
DAM NYCA	461,678	476,707	455,027	464,716	436,505	371,383	353,157
DAM NON-NYCA	60,939	58,072	57,533	59,142	79,918	74,489	80,929
DAM WHEELS	1,200	0	0	0	0	0	0
DAM VIRTUAL	39,666	48,808	51,689	51,908	52,336	45,191	41,352
BALANCING NYCA	23,166	28,452	26,127	13,282	37,591	(6,451)	9,509
BALANCING NON-NYCA	6,705	(7,146)	1,702	3,033	(2,464)	4,549	1,143
BALANCING WHEELS	685	50	598	1,102	845	0	0
BALANCING VIRTUAL	(39,666)	(48,808)	(51,689)	(51,908)	(52,336)	(45,191)	(41,352)
	26	27	28	29	30		
DAM NYCA	408,151	412,396	398,440	387,046	345,638		
DAM NON-NYCA	88,526	76,741	79,819	84,291	85,660		
DAM WHEELS	200	625	472	275	0		
DAM VIRTUAL	46,471	53,116	40,206	45,012	64,698		
BALANCING NYCA	25,695	6,820	4,892	12,638	14,549		
BALANCING NON-NYCA	(7,450)	3,523	(1,323)	(3,460)	(1)		
BALANCING WHEELS	675	(248)	930	3,140	0		
BALANCING VIRTUAL	(46,471)	(53,116)	(40,206)	(45,012)	(64,698)		

