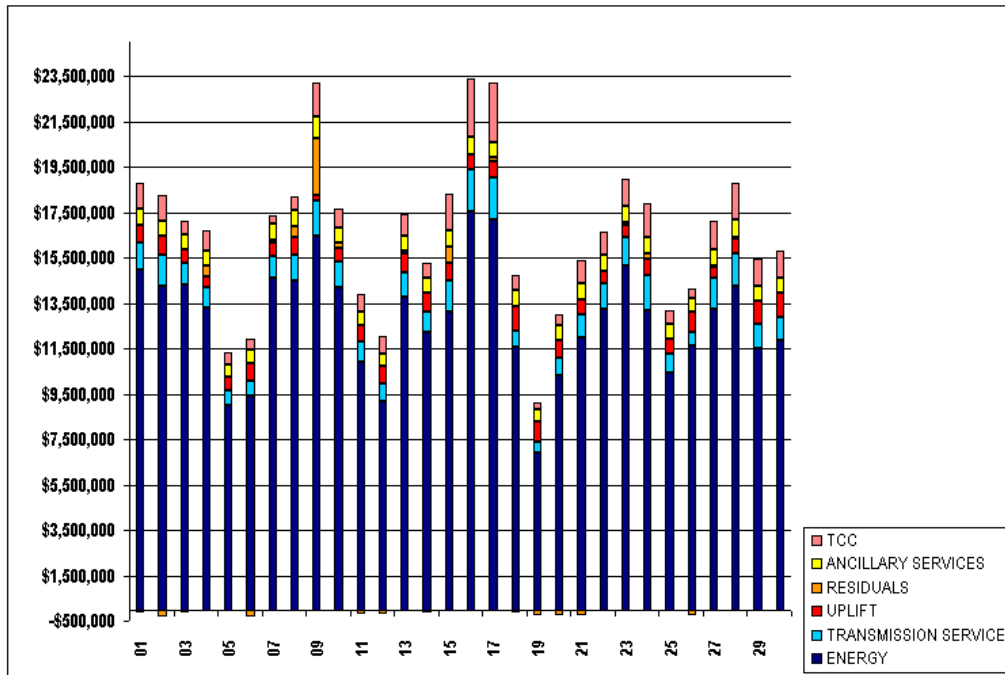


SETTLEMENTS REPORT
ATTACHMENT C: SEPTEMBER 2004 12-MONTH SETTLEMENT ADJUSTMENT
OCTOBER 21, 2005

4-MONTH SETTLEMENT ADJUSTMENT MARKET COSTS

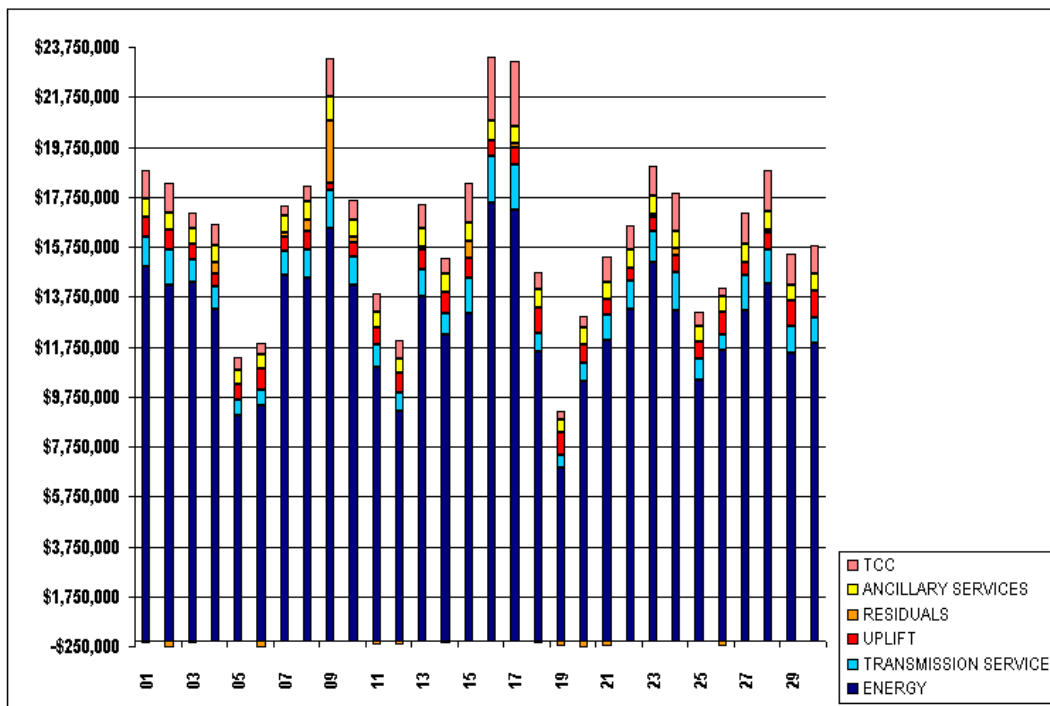
	MONDAY	TUESDAY	WEDNESDAY	THURSDAY	FRIDAY	SATURDAY	SUNDAY
			1	2	3	4	5
ENERGY			\$14,954,915.78	\$14,224,373.79	\$14,335,341.45	\$13,269,109.68	\$8,986,597.55
TRANSMISSION SERVICE			\$1,199,282.34	\$1,416,917.23	\$926,389.70	\$893,081.81	\$652,466.07
UPLIFT			\$768,606.17	\$802,171.15	\$578,153.20	\$535,393.16	\$608,903.35
RESIDUALS			(\$118,108.25)	(\$303,626.88)	(\$147,770.27)	\$447,641.53	(\$94,480.24)
ANCILLARY SERVICES			\$715,222.69	\$658,342.58	\$654,166.50	\$659,237.57	\$566,580.26
TCC			\$1,147,800.22	\$1,173,647.90	\$620,621.64	\$880,170.76	\$507,015.90
	6	7	8	9	10	11	12
ENERGY	\$9,392,440.04	\$14,623,249.28	\$14,487,873.15	\$16,480,543.26	\$14,220,438.70	\$10,919,258.41	\$9,170,006.22
TRANSMISSION SERVICE	\$649,357.28	\$959,386.89	\$1,151,840.22	\$1,510,376.04	\$1,115,899.28	\$892,807.42	\$759,880.13
UPLIFT	\$816,088.33	\$576,282.12	\$756,683.68	\$261,333.22	\$583,692.73	\$703,966.96	\$787,638.49
RESIDUALS	(\$309,651.22)	\$140,543.29	\$466,136.07	\$2,523,075.84	\$214,458.62	(\$184,667.55)	(\$182,891.54)
ANCILLARY SERVICES	\$573,229.33	\$702,003.06	\$718,910.83	\$939,734.24	\$695,252.96	\$602,009.69	\$559,191.23
TCC	\$462,420.58	\$371,987.07	\$612,092.02	\$1,516,050.76	\$795,147.77	\$768,496.38	\$745,597.35
	13	14	15	16	17	18	19
ENERGY	\$13,748,517.62	\$12,228,376.85	\$13,107,881.29	\$17,508,531.62	\$17,201,618.12	\$11,568,458.41	\$6,880,196.52
TRANSMISSION SERVICE	\$1,076,834.47	\$877,792.22	\$1,387,621.69	\$1,866,057.21	\$1,851,165.16	\$717,677.65	\$514,057.12
UPLIFT	\$845,863.60	\$829,345.28	\$789,056.16	\$686,730.03	\$680,886.99	\$1,052,443.58	\$899,756.10
RESIDUALS	\$110,722.15	(\$158,567.73)	\$690,088.20	\$3,839.25	\$166,030.77	(\$148,088.09)	(\$254,918.04)
ANCILLARY SERVICES	\$685,647.49	\$696,202.78	\$752,108.57	\$755,796.65	\$693,978.53	\$710,086.11	\$529,239.60
TCC	\$971,834.01	\$642,310.48	\$1,564,655.61	\$2,582,056.68	\$2,611,631.31	\$696,997.43	\$318,325.53
	20	21	22	23	24	25	26
ENERGY	\$10,334,767.17	\$11,993,225.46	\$13,233,145.64	\$15,146,196.30	\$13,172,982.43	\$10,411,797.43	\$11,632,124.37
TRANSMISSION SERVICE	\$774,171.02	\$1,017,523.26	\$1,142,769.91	\$1,242,186.08	\$1,538,433.82	\$877,338.54	\$591,834.54
UPLIFT	\$729,738.48	\$625,699.31	\$523,845.82	\$578,208.50	\$715,259.51	\$659,282.18	\$911,418.81
RESIDUALS	(\$292,813.88)	(\$241,629.33)	(\$91,917.19)	\$95,889.02	\$250,562.24	(\$37,684.01)	(\$263,940.07)
ANCILLARY SERVICES	\$692,306.86	\$721,893.87	\$725,492.31	\$740,671.31	\$713,414.55	\$633,820.58	\$602,782.50
TCC	\$450,940.57	\$1,010,619.54	\$989,392.54	\$1,181,994.41	\$1,513,296.06	\$583,558.67	\$374,835.74
	27	28	29	30			
ENERGY	\$13,222,114.43	\$14,277,340.48	\$11,479,487.75	\$11,884,800.02			
TRANSMISSION SERVICE	\$1,396,874.61	\$1,380,340.82	\$1,122,960.59	\$1,010,367.55			
UPLIFT	\$490,821.30	\$661,053.34	\$966,233.41	\$1,069,625.73			
RESIDUALS	\$37,703.44	\$92,828.17	\$465.16	(\$28,543.87)			
ANCILLARY SERVICES	\$714,007.16	\$740,738.63	\$668,439.31	\$666,924.61			
TCC	\$1,278,802.47	\$1,644,660.96	\$1,207,340.54	\$1,174,095.24			



SETTLEMENTS REPORT
ATTACHMENT C: SEPTEMBER 2004 12-MONTH SETTLEMENT ADJUSTMENT
OCTOBER 21, 2005

12-MONTH SETTLEMENT ADJUSTMENT MARKET COSTS

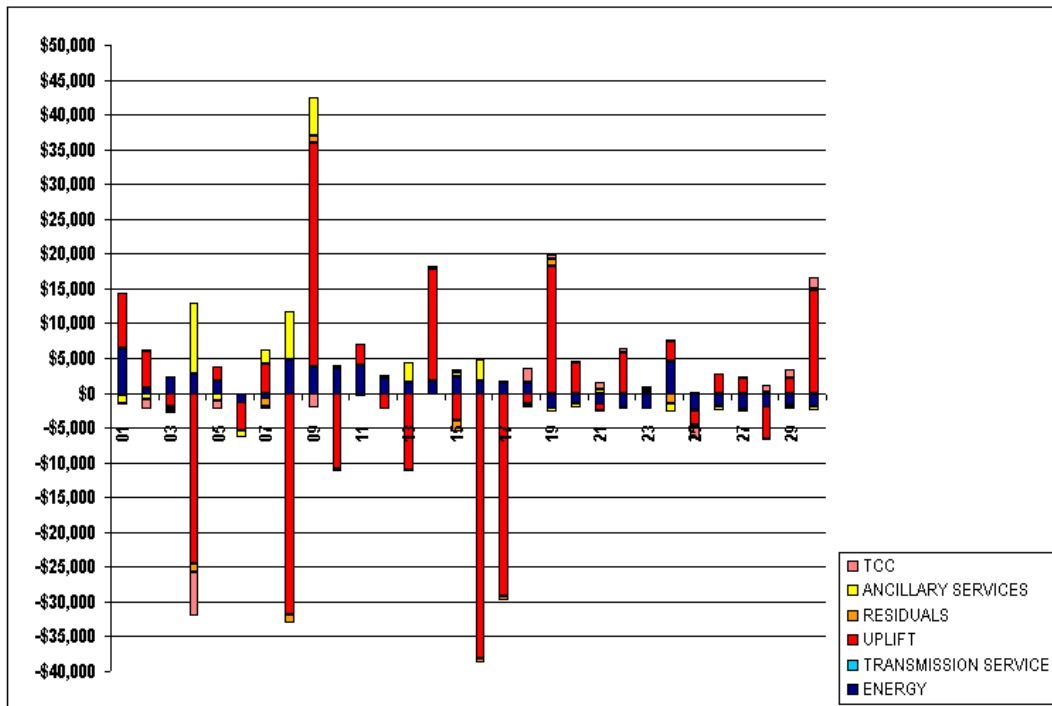
	MONDAY	TUESDAY	WEDNESDAY	THURSDAY	FRIDAY	SATURDAY	SUNDAY
			1	2	3	4	5
ENERGY			\$14,961,418.18	\$14,225,116.60	\$14,337,607.14	\$13,271,968.27	\$8,988,306.95
TRANSMISSION SERVICE			\$1,199,151.13	\$1,416,766.14	\$926,335.03	\$892,957.49	\$652,349.49
UPLIFT			\$776,481.09	\$807,451.18	\$576,317.44	\$511,085.61	\$610,923.81
RESIDUALS			(\$118,254.94)	(\$303,514.91)	(\$148,200.70)	\$446,370.87	(\$94,480.38)
ANCILLARY SERVICES			\$713,968.35	\$657,566.63	\$653,764.49	\$669,226.62	\$565,528.66
TCC			\$1,147,534.72	\$1,172,260.52	\$620,389.25	\$873,793.01	\$505,779.57
	6	7	8	9	10	11	12
ENERGY	\$9,391,187.86	\$14,622,573.78	\$14,492,638.87	\$16,484,405.77	\$14,224,047.51	\$10,923,302.57	\$9,172,060.27
TRANSMISSION SERVICE	\$649,227.92	\$959,345.22	\$1,151,824.51	\$1,510,391.25	\$1,115,889.65	\$892,789.61	\$759,850.36
UPLIFT	\$812,130.08	\$580,433.98	\$724,817.48	\$293,504.86	\$572,822.17	\$706,953.51	\$785,419.06
RESIDUALS	(\$309,784.65)	\$139,294.39	\$464,898.29	\$2,524,033.28	\$214,110.05	(\$184,588.70)	(\$132,971.50)
ANCILLARY SERVICES	\$572,381.61	\$704,156.11	\$725,941.63	\$945,151.19	\$695,202.93	\$601,575.79	\$559,283.39
TCC	\$462,420.58	\$371,696.94	\$612,088.03	\$1,513,865.38	\$795,612.28	\$768,486.69	\$745,952.71
	13	14	15	16	17	18	19
ENERGY	\$13,750,049.55	\$12,230,152.02	\$13,110,168.18	\$17,510,244.70	\$17,203,209.46	\$11,570,075.57	\$6,878,062.44
TRANSMISSION SERVICE	\$1,076,803.87	\$877,766.75	\$1,387,488.84	\$1,865,910.71	\$1,851,135.36	\$717,589.45	\$513,967.97
UPLIFT	\$834,835.45	\$845,314.50	\$785,290.70	\$648,772.95	\$651,696.24	\$1,050,984.21	\$918,000.63
RESIDUALS	\$110,496.40	(\$158,702.14)	\$688,308.02	\$3,177.47	\$165,453.82	(\$148,180.44)	(\$253,869.60)
ANCILLARY SERVICES	\$688,470.23	\$696,698.24	\$752,694.69	\$758,917.20	\$694,029.73	\$709,521.05	\$528,709.20
TCC	\$971,752.13	\$642,386.28	\$1,565,105.32	\$2,582,276.88	\$2,611,795.44	\$698,927.33	\$318,910.96
	20	21	22	23	24	25	26
ENERGY	\$10,333,400.53	\$11,991,746.08	\$13,231,172.57	\$15,144,077.34	\$13,177,481.86	\$10,409,418.27	\$11,630,312.26
TRANSMISSION SERVICE	\$774,116.30	\$1,017,470.03	\$1,142,721.95	\$1,242,139.73	\$1,538,852.88	\$877,249.41	\$591,782.98
UPLIFT	\$734,177.01	\$624,668.69	\$529,646.76	\$578,136.86	\$718,150.22	\$657,234.13	\$914,173.86
RESIDUALS	(\$282,779.12)	(\$241,780.52)	(\$91,841.93)	\$96,066.00	\$249,173.18	(\$37,574.16)	(\$264,084.48)
ANCILLARY SERVICES	\$691,589.87	\$722,439.49	\$725,184.32	\$740,918.54	\$712,195.95	\$633,418.00	\$602,302.75
TCC	\$451,096.18	\$1,011,619.13	\$989,900.20	\$1,182,449.32	\$1,513,473.49	\$581,880.37	\$374,835.74
	27	28	29	30			
ENERGY	\$13,220,066.33	\$14,275,501.66	\$11,477,900.34	\$11,883,003.84			
TRANSMISSION SERVICE	\$1,396,831.92	\$1,380,298.74	\$1,122,913.37	\$1,010,319.31			
UPLIFT	\$493,049.64	\$656,233.29	\$968,441.19	\$1,084,430.70			
RESIDUALS	\$37,406.87	\$92,769.24	\$3.99	(\$28,349.01)			
ANCILLARY SERVICES	\$713,576.13	\$740,823.50	\$668,202.63	\$666,271.55			
TCC	\$1,278,869.73	\$1,645,684.11	\$1,208,477.12	\$1,175,660.46			



SETTLEMENTS REPORT
ATTACHMENT C: SEPTEMBER 2004 12-MONTH SETTLEMENT ADJUSTMENT
OCTOBER 21, 2005

12- MONTH SETTLEMENT ADJUSTMENT MARKET COSTS DELTA

	MONDAY	TUESDAY	WEDNESDAY	THURSDAY	FRIDAY	SATURDAY	SUNDAY
			1	2	3	4	5
ENERGY			\$6,502.40	\$742.81	\$2,265.69	\$2,858.59	\$1,719.40
TRANSMISSION SERVICE			(\$131.21)	(\$151.09)	(\$54.67)	(\$124.32)	(\$116.58)
UPLIFT			\$7,874.92	\$5,280.03	(\$1,835.76)	(\$24,307.55)	\$2,020.46
RESIDUALS			(\$146.69)	\$111.97	(\$430.43)	(\$1,270.66)	(\$0.14)
ANCILLARY SERVICES			(\$1,254.34)	(\$775.95)	(\$402.01)	\$9,989.05	(\$1,051.60)
TCC			(\$265.50)	(\$1,387.38)	(\$232.39)	(\$6,377.75)	(\$1,236.33)
	6	7	8	9	10	11	12
ENERGY	(\$1,252.18)	(\$675.50)	\$4,765.72	\$3,862.51	\$3,608.81	\$4,044.16	\$2,054.05
TRANSMISSION SERVICE	(\$129.36)	(\$41.67)	(\$15.71)	\$15.21	(\$9.63)	(\$17.81)	(\$29.77)
UPLIFT	(\$3,958.25)	\$4,151.86	(\$31,866.20)	\$32,171.64	(\$10,870.56)	\$2,996.56	(\$2,219.43)
RESIDUALS	(\$133.43)	(\$1,248.90)	(\$1,237.78)	\$957.44	(\$348.47)	\$78.85	(\$79.96)
ANCILLARY SERVICES	(\$847.72)	\$2,153.05	\$7,030.80	\$5,416.95	(\$50.03)	(\$433.90)	\$92.16
TCC	\$0.00	(\$290.13)	(\$3.99)	(\$2,185.38)	\$464.51	(\$9.69)	\$355.36
	13	14	15	16	17	18	19
ENERGY	\$1,531.93	\$1,775.17	\$2,286.89	\$1,713.08	\$1,591.34	\$1,617.16	(\$2,134.08)
TRANSMISSION SERVICE	(\$30.60)	(\$25.47)	(\$132.85)	(\$146.50)	(\$29.80)	(\$88.20)	(\$89.15)
UPLIFT	(\$11,028.15)	\$15,969.22	(\$3,765.46)	(\$37,967.08)	(\$29,190.75)	(\$1,459.37)	\$18,244.53
RESIDUALS	(\$225.75)	(\$134.41)	(\$1,780.18)	(\$661.78)	(\$576.95)	(\$92.35)	\$1,048.44
ANCILLARY SERVICES	\$2,822.74	\$495.46	\$586.12	\$3,120.55	\$51.20	(\$565.06)	(\$530.40)
TCC	(\$81.88)	\$75.80	\$449.71	\$220.20	\$164.13	\$1,929.90	\$585.43
	20	21	22	23	24	25	26
ENERGY	(\$1,366.64)	(\$1,479.38)	(\$1,973.07)	(\$2,118.96)	\$4,499.43	(\$2,379.16)	(\$1,812.11)
TRANSMISSION SERVICE	(\$54.72)	(\$53.23)	(\$47.96)	(\$46.35)	(\$80.94)	(\$89.13)	(\$51.56)
UPLIFT	\$4,438.53	(\$1,030.62)	\$5,800.94	(\$71.64)	\$2,390.71	(\$2,048.05)	\$2,755.05
RESIDUALS	\$34.76	(\$151.19)	\$75.26	\$176.98	(\$1,389.06)	\$109.85	(\$144.41)
ANCILLARY SERVICES	(\$716.99)	\$545.62	(\$307.99)	\$247.23	(\$1,218.60)	(\$402.58)	(\$479.75)
TCC	\$155.61	\$999.59	\$507.66	\$454.91	\$177.43	(\$1,678.30)	\$0.00
	27	28	29	30			
ENERGY	(\$2,048.10)	(\$1,838.82)	(\$1,587.41)	(\$1,796.18)			
TRANSMISSION SERVICE	(\$42.69)	(\$42.08)	(\$47.22)	(\$48.24)			
UPLIFT	\$2,228.34	(\$4,820.05)	\$2,207.78	\$14,804.97			
RESIDUALS	(\$296.57)	(\$58.93)	(\$461.17)	\$194.86			
ANCILLARY SERVICES	(\$431.03)	\$84.87	(\$236.68)	(\$653.06)			
TCC	\$67.26	\$1,023.15	\$1,136.58	\$1,565.22			

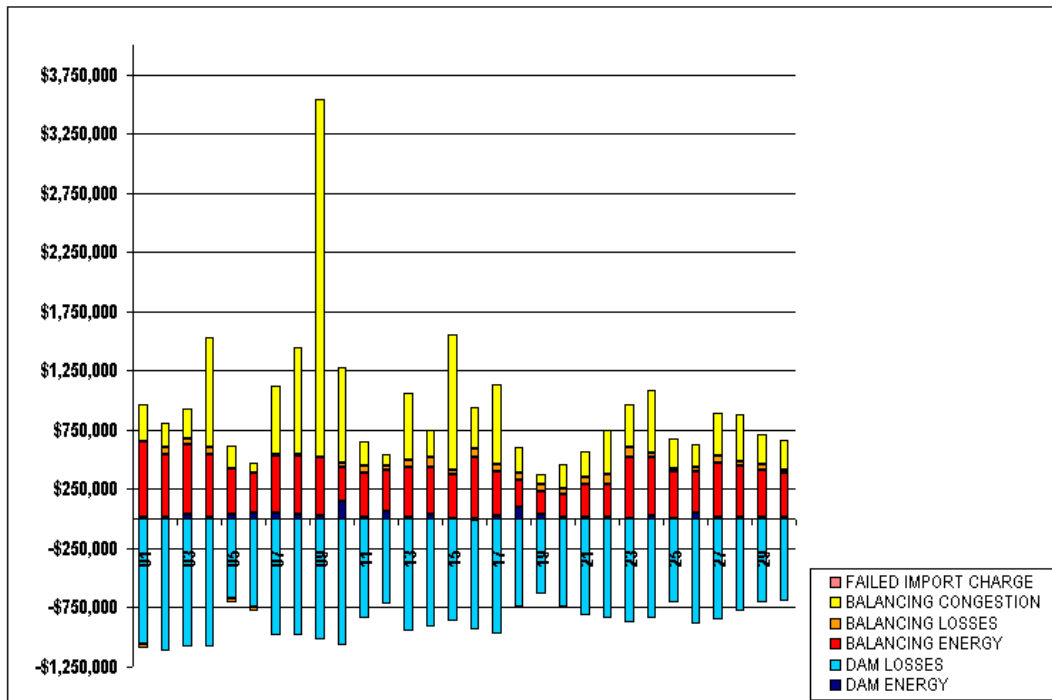


FOR DISCUSSION PURPOSES ONLY

SETTLEMENTS REPORT
ATTACHMENT C: SEPTEMBER 2004 12-MONTH SETTLEMENT ADJUSTMENT
OCTOBER 21, 2005

4-MONTH SETTLEMENT ADJUSTMENT MARKET RESIDUALS

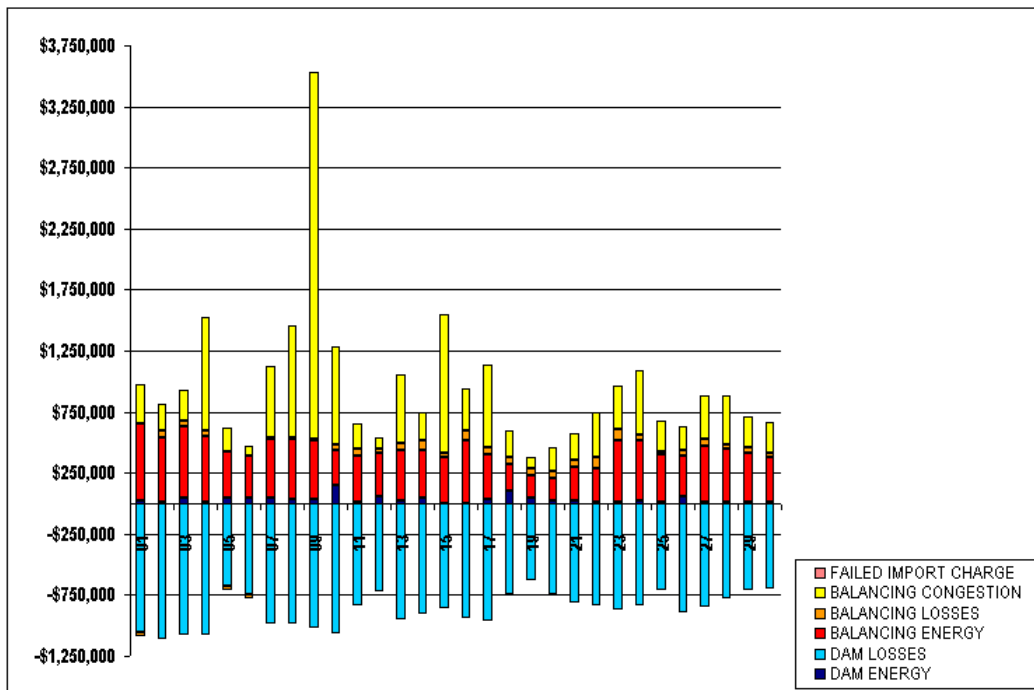
	MONDAY	TUESDAY	WEDNESDAY	THURSDAY	FRIDAY	SATURDAY	SUNDAY
			1	2	3	4	5
DAM ENERGY			\$20,163.63	\$13,654.00	\$42,156.87	\$15,981.00	\$40,555.94
DAM LOSSES			(\$1,059,565.16)	(\$1,114,818.63)	(\$1,083,029.76)	(\$1,078,188.09)	(\$673,421.50)
BALANCING ENERGY			\$636,824.54	\$527,955.73	\$585,548.02	\$533,395.43	\$382,845.82
BALANCING LOSSES			(\$30,018.97)	\$57,076.60	\$52,026.83	\$51,360.67	(\$37,233.37)
BALANCING CONGESTION			\$313,914.32	\$212,201.57	\$253,712.52	\$324,841.52	\$192,517.08
FAILED IMPORT CHARGE			\$0.00	\$0.00	\$0.00	\$0.00	\$0.00
	6	7	8	9	10	11	12
DAM ENERGY	\$48,988.59	\$44,780.35	\$33,564.15	\$28,970.07	\$149,790.31	\$16,752.13	\$56,522.52
DAM LOSSES	(\$742,054.69)	(\$984,239.10)	(\$988,422.66)	(\$1,015,867.51)	(\$1,067,085.19)	(\$838,408.33)	(\$724,796.79)
BALANCING ENERGY	\$344,439.86	\$481,621.34	\$493,702.68	\$491,373.63	\$290,557.30	\$372,498.39	\$359,560.40
BALANCING LOSSES	(\$41,958.62)	\$15,654.81	\$15,903.43	\$2,942.03	\$36,259.36	\$55,709.09	\$28,649.61
BALANCING CONGESTION	\$80,838.04	\$582,042.52	\$909,258.45	\$3,014,836.21	\$803,637.68	\$208,569.23	\$96,962.36
FAILED IMPORT CHARGE	\$0.00	\$0.00	\$0.00	\$0.00	\$0.00	\$0.00	\$0.00
	13	14	15	16	17	18	19
DAM ENERGY	\$18,596.77	\$44,090.49	(\$2,132.90)	(\$5,277.16)	\$30,321.11	\$97,773.86	\$40,224.72
DAM LOSSES	(\$947,536.69)	(\$908,688.72)	(\$859,990.10)	(\$937,027.00)	(\$968,887.86)	(\$749,573.47)	(\$634,765.59)
BALANCING ENERGY	\$420,847.53	\$394,358.75	\$376,650.71	\$519,160.77	\$369,837.63	\$225,220.90	\$193,885.16
BALANCING LOSSES	\$58,097.63	\$75,993.18	\$38,386.86	\$77,188.38	\$54,039.97	\$60,154.18	\$55,648.26
BALANCING CONGESTION	\$559,123.94	\$235,406.23	\$1,136,688.24	\$347,394.58	\$680,089.69	\$216,404.82	\$89,071.37
FAILED IMPORT CHARGE	\$0.00	\$0.00	\$0.00	\$0.00	\$0.00	\$0.00	\$0.00
	20	21	22	23	24	25	26
DAM ENERGY	\$18,071.87	\$19,227.81	\$13,003.43	\$6,282.69	\$22,518.82	\$8,219.74	\$54,991.38
DAM LOSSES	(\$744,134.02)	(\$814,842.28)	(\$840,105.07)	(\$873,608.27)	(\$842,205.22)	(\$713,794.59)	(\$891,071.07)
BALANCING ENERGY	\$190,575.74	\$278,063.52	\$277,311.26	\$514,332.24	\$492,479.15	\$389,625.50	\$339,777.86
BALANCING LOSSES	\$52,219.04	\$55,968.45	\$85,001.99	\$82,295.46	\$43,489.77	\$30,045.77	\$43,766.02
BALANCING CONGESTION	\$200,327.39	\$219,159.33	\$372,304.01	\$365,237.61	\$533,198.03	\$247,659.46	\$188,303.46
FAILED IMPORT CHARGE	\$0.00	\$0.00	\$0.00	\$0.00	\$0.00	\$0.00	\$0.00
	27	28	29	30			
DAM ENERGY	\$14,111.72	\$15,632.43	\$12,934.33	\$14,240.11			
DAM LOSSES	(\$849,969.86)	(\$785,448.01)	(\$711,087.24)	(\$694,913.98)			
BALANCING ENERGY	\$455,141.51	\$426,858.81	\$401,842.28	\$367,855.12			
BALANCING LOSSES	\$59,464.92	\$35,755.86	\$42,893.17	\$33,332.53			
BALANCING CONGESTION	\$358,716.98	\$399,404.68	\$252,783.50	\$250,615.74			
FAILED IMPORT CHARGE	\$0.00	\$0.00	\$0.00	\$0.00			



SETTLEMENTS REPORT
ATTACHMENT C: SEPTEMBER 2004 12-MONTH SETTLEMENT ADJUSTMENT
OCTOBER 21, 2005

12-MONTH SETTLEMENT ADJUSTMENT MARKET RESIDUALS ANALYSIS

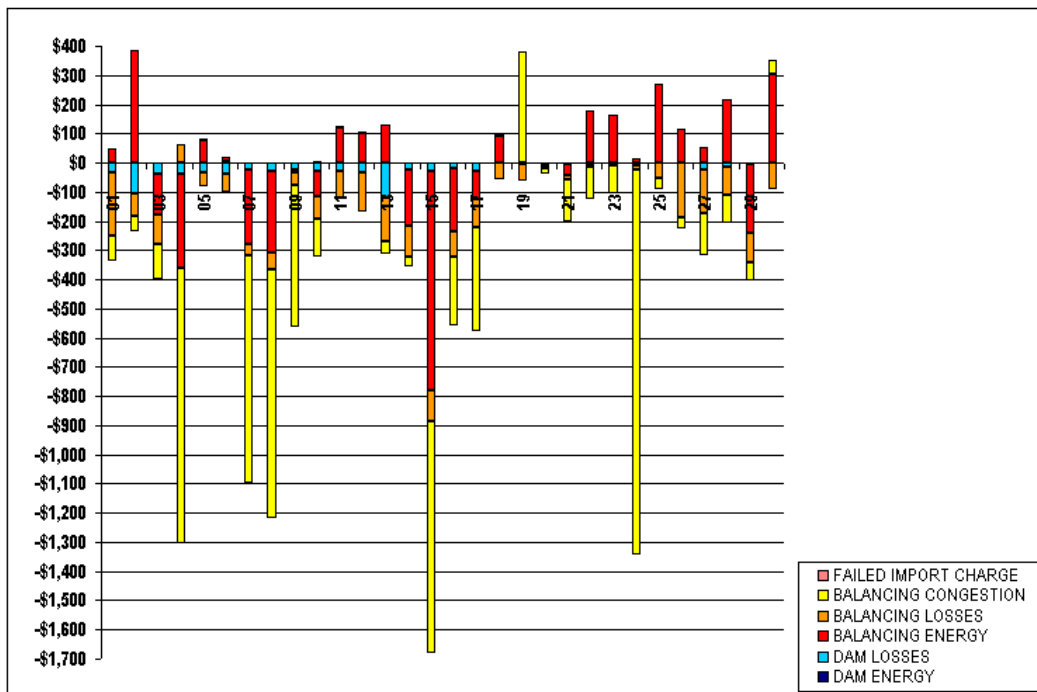
	MONDAY	TUESDAY	WEDNESDAY	THURSDAY	FRIDAY	SATURDAY	SUNDAY
			1	2	3	4	5
DAM ENERGY			\$20,164.84	\$13,654.33	\$43,158.07	\$15,981.46	\$40,557.93
DAM LOSSES			(\$1,059,600.38)	(\$1,114,924.62)	(\$1,083,069.55)	(\$1,078,224.64)	(\$673,455.47)
BALANCING ENERGY			\$636,869.75	\$528,342.79	\$585,411.64	\$533,068.69	\$382,921.36
BALANCING LOSSES			(\$30,235.51)	\$57,000.31	\$51,922.68	\$51,424.27	(\$37,280.30)
BALANCING CONGESTION			\$313,831.36	\$212,147.01	\$253,594.47	\$323,900.44	\$192,522.10
FAILED IMPORT CHARGE			\$0.00	\$0.00	\$0.00	\$0.00	\$0.00
	6	7	8	9	10	11	12
DAM ENERGY	\$48,991.31	\$44,781.94	\$33,566.56	\$28,971.67	\$149,796.57	\$16,752.64	\$56,524.70
DAM LOSSES	(\$742,093.32)	(\$984,263.22)	(\$988,451.69)	(\$1,015,892.35)	(\$1,067,111.81)	(\$838,438.26)	(\$724,829.02)
BALANCING ENERGY	\$344,458.01	\$481,364.22	\$493,425.60	\$491,365.57	\$290,470.61	\$372,617.65	\$359,659.37
BALANCING LOSSES	(\$42,022.50)	\$15,620.31	\$15,844.94	\$2,895.71	\$36,180.76	\$55,611.84	\$28,514.71
BALANCING CONGESTION	\$80,833.63	\$581,260.20	\$908,405.35	\$3,014,351.60	\$803,505.24	\$208,576.00	\$96,965.93
FAILED IMPORT CHARGE	\$0.00	\$0.00	\$0.00	\$0.00	\$0.00	\$0.00	\$0.00
	13	14	15	16	17	18	19
DAM ENERGY	\$18,596.93	\$44,092.09	(\$2,132.83)	(\$5,277.17)	\$30,323.00	\$97,773.86	\$40,224.72
DAM LOSSES	(\$947,654.79)	(\$908,714.74)	(\$860,018.95)	(\$937,045.02)	(\$968,916.66)	(\$749,573.47)	(\$634,765.59)
BALANCING ENERGY	\$420,978.53	\$394,168.78	\$375,899.74	\$518,942.66	\$369,740.14	\$225,311.37	\$193,880.76
BALANCING LOSSES	\$57,945.96	\$75,887.45	\$38,281.35	\$77,099.70	\$53,947.26	\$60,096.37	\$55,590.24
BALANCING CONGESTION	\$559,080.16	\$235,370.62	\$1,135,890.51	\$347,162.77	\$679,732.62	\$216,418.05	\$89,451.89
FAILED IMPORT CHARGE	\$0.00	\$0.00	\$0.00	\$0.00	\$0.00	\$0.00	\$0.00
	20	21	22	23	24	25	26
DAM ENERGY	\$18,072.28	\$19,228.01	\$13,003.64	\$6,282.69	\$22,519.14	\$8,219.74	\$54,991.38
DAM LOSSES	(\$744,138.70)	(\$814,848.68)	(\$840,109.25)	(\$873,608.27)	(\$842,213.24)	(\$713,794.59)	(\$891,071.07)
BALANCING ENERGY	\$190,572.75	\$278,024.59	\$277,491.31	\$514,497.97	\$492,492.40	\$389,894.64	\$339,893.11
BALANCING LOSSES	\$52,205.60	\$55,954.01	\$84,992.59	\$82,285.04	\$43,473.38	\$29,992.84	\$43,578.49
BALANCING CONGESTION	\$200,311.60	\$219,018.68	\$372,192.29	\$365,142.46	\$531,878.64	\$247,621.03	\$188,265.21
FAILED IMPORT CHARGE	\$0.00	\$0.00	\$0.00	\$0.00	\$0.00	\$0.00	\$0.00
	27	28	29	30			
DAM ENERGY	\$14,112.59	\$15,632.86	\$12,934.47	\$14,240.29			
DAM LOSSES	(\$849,992.75)	(\$785,460.28)	(\$711,093.08)	(\$694,915.82)			
BALANCING ENERGY	\$455,192.10	\$427,077.56	\$401,605.74	\$368,160.49			
BALANCING LOSSES	\$59,312.54	\$35,655.78	\$42,795.96	\$33,241.43			
BALANCING CONGESTION	\$358,574.81	\$399,309.67	\$252,719.39	\$250,662.48			
FAILED IMPORT CHARGE	\$0.00	\$0.00	\$0.00	\$0.00			



SETTLEMENTS REPORT
ATTACHMENT C: SEPTEMBER 2004 12-MONTH SETTLEMENT ADJUSTMENT
OCTOBER 21, 2005

12-MONTH SETTLEMENT ADJUSTMENT MARKET RESIDUALS DELTA ANALYSIS

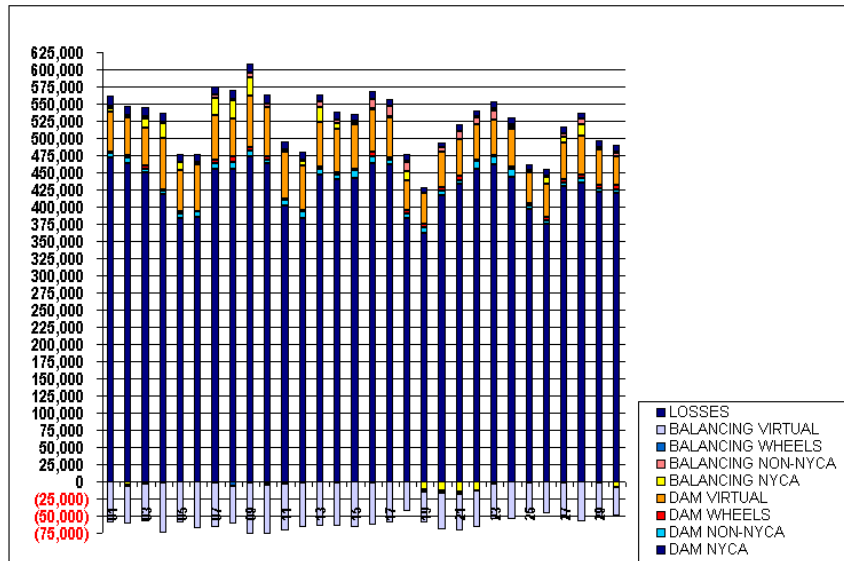
	MONDAY	TUESDAY	WEDNESDAY	THURSDAY	FRIDAY	SATURDAY	SUNDAY
			1	2	3	4	5
DAM ENERGY			\$1.21	\$0.33	\$1.20	\$0.46	\$1.99
DAM LOSSES			(\$35.22)	(\$105.99)	(\$39.79)	(\$36.55)	(\$33.97)
BALANCING ENERGY			\$45.21	\$387.06	(\$136.38)	(\$326.74)	\$75.54
BALANCING LOSSES			(\$216.54)	(\$76.29)	(\$104.15)	\$63.60	(\$46.93)
BALANCING CONGESTION			(\$82.96)	(\$54.56)	(\$118.05)	(\$941.08)	\$5.02
FAILED IMPORT CHARGE			\$0.00	\$0.00	\$0.00	\$0.00	\$0.00
	6	7	8	9	10	11	12
DAM ENERGY	\$2.72	\$1.59	\$1.41	\$1.60	\$6.26	\$0.51	\$2.18
DAM LOSSES	(\$38.63)	(\$24.12)	(\$29.03)	(\$24.84)	(\$26.62)	(\$29.93)	(\$32.23)
BALANCING ENERGY	\$18.15	(\$257.12)	(\$277.08)	(\$8.06)	(\$86.69)	\$119.26	\$98.97
BALANCING LOSSES	(\$63.88)	(\$34.50)	(\$58.49)	(\$46.32)	(\$78.60)	(\$97.25)	(\$134.90)
BALANCING CONGESTION	(\$4.41)	(\$782.32)	(\$853.10)	(\$484.61)	(\$132.44)	\$6.77	\$3.57
FAILED IMPORT CHARGE	\$0.00	\$0.00	\$0.00	\$0.00	\$0.00	\$0.00	\$0.00
	13	14	15	16	17	18	19
DAM ENERGY	\$0.16	\$1.60	\$0.07	(\$0.01)	\$1.89	\$0.00	\$0.00
DAM LOSSES	(\$118.10)	(\$26.02)	(\$28.85)	(\$18.02)	(\$28.80)	\$0.00	\$0.00
BALANCING ENERGY	\$131.00	(\$189.97)	(\$750.97)	(\$218.11)	(\$97.49)	\$90.47	(\$4.40)
BALANCING LOSSES	(\$151.67)	(\$105.73)	(\$105.51)	(\$88.68)	(\$92.71)	(\$57.81)	(\$58.02)
BALANCING CONGESTION	(\$43.78)	(\$35.61)	(\$797.73)	(\$231.81)	(\$357.07)	\$13.23	\$380.52
FAILED IMPORT CHARGE	\$0.00	\$0.00	\$0.00	\$0.00	\$0.00	\$0.00	\$0.00
	20	21	22	23	24	25	26
DAM ENERGY	\$0.41	\$0.20	\$0.21	\$0.00	\$0.32	\$0.00	\$0.00
DAM LOSSES	(\$4.68)	(\$6.40)	(\$4.18)	\$0.00	(\$8.02)	\$0.00	\$0.00
BALANCING ENERGY	(\$2.99)	(\$38.93)	\$180.05	\$165.73	\$13.25	\$269.14	\$115.25
BALANCING LOSSES	(\$13.44)	(\$14.44)	(\$9.40)	(\$10.42)	(\$16.39)	(\$52.93)	(\$187.53)
BALANCING CONGESTION	(\$15.79)	(\$140.65)	(\$111.72)	(\$95.15)	(\$1,319.39)	(\$38.43)	(\$38.25)
FAILED IMPORT CHARGE	\$0.00	\$0.00	\$0.00	\$0.00	\$0.00	\$0.00	\$0.00
	27	28	29	30			
DAM ENERGY	\$0.87	\$0.43	\$0.14	\$0.18			
DAM LOSSES	(\$22.89)	(\$12.27)	(\$5.84)	(\$1.84)			
BALANCING ENERGY	\$50.59	\$218.75	(\$236.54)	\$305.37			
BALANCING LOSSES	(\$152.38)	(\$100.08)	(\$97.21)	(\$91.10)			
BALANCING CONGESTION	(\$142.17)	(\$95.01)	(\$64.11)	\$46.74			
FAILED IMPORT CHARGE	\$0.00	\$0.00	\$0.00	\$0.00			



SETTLEMENTS REPORT
ATTACHMENT C: SEPTEMBER 2004 12-MONTH SETTLEMENT ADJUSTMENT
OCTOBER 21, 2005

4-MONTH SETTLEMENT ADJUSTMENT MARKET WITHDRAWALS ANALYSIS

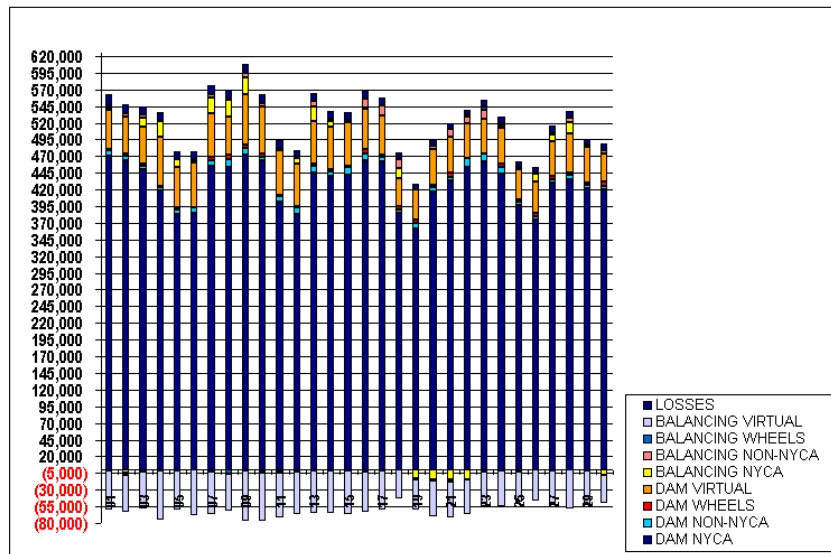
	MONDAY	TUESDAY	WEDNESDAY	THURSDAY	FRIDAY	SATURDAY	SUNDAY
			1	2	3	4	5
DAM NYCA			471,260	464,056	450,696	418,969	382,511
DAM NON-NYCA			7,326	7,169	4,807	3,969	8,065
DAM WHEELS			1,275	3,300	4,100	2,750	2,480
DAM VIRTUAL			59,246	54,987	55,360	73,728	60,312
BALANCING NYCA			3,503	(4,273)	13,676	23,066	11,846
BALANCING NON-NYCA			4,695	4,079	3,626	680	528
BALANCING WHEELS			(675)	(2,560)	(2,850)	(1,040)	(285)
BALANCING VIRTUAL			(69,246)	(64,987)	(65,360)	(73,728)	(60,312)
LOSSES			14,885	13,729	12,876	12,735	11,410
	6	7	8	9	10	11	12
DAM NYCA	384,468	454,950	454,501	473,045	463,061	402,179	384,068
DAM NON-NYCA	8,705	9,070	10,502	9,114	5,624	7,883	8,667
DAM WHEELS	300	5,900	7,700	4,700	4,600	2,000	2,400
DAM VIRTUAL	67,619	64,602	56,017	75,582	71,914	67,513	64,336
BALANCING NYCA	3,553	25,077	25,910	25,738	(2,310)	(3,267)	7,675
BALANCING NON-NYCA	881	4,182	1,789	6,785	4,996	3,264	1,553
BALANCING WHEELS	60	(2,192)	(6,325)	(1,863)	(2,822)	(465)	(2,050)
BALANCING VIRTUAL	(67,619)	(64,602)	(56,017)	(75,582)	(71,914)	(67,513)	(64,336)
LOSSES	11,707	12,836	12,896	13,918	13,343	11,510	10,909
	13	14	15	16	17	18	19
DAM NYCA	446,063	439,828	442,070	463,165	461,659	384,154	361,464
DAM NON-NYCA	9,193	7,043	11,287	10,870	7,050	6,505	8,619
DAM WHEELS	2,800	3,318	1,275	5,900	2,960	3,579	5,431
DAM VIRTUAL	64,696	63,702	66,046	61,650	58,769	43,311	45,077
BALANCING NYCA	21,813	8,445	1,907	1,823	519	14,819	(12,123)
BALANCING NON-NYCA	9,116	4,526	1,811	13,829	15,820	13,363	119
BALANCING WHEELS	(318)	(1,818)	(602)	(1,949)	(750)	1,516	(2,231)
BALANCING VIRTUAL	(64,696)	(63,702)	(66,046)	(61,650)	(58,769)	(43,311)	(45,077)
LOSSES	10,063	10,754	10,807	10,381	10,609	8,590	7,018
	20	21	22	23	24	25	26
DAM NYCA	416,773	433,232	454,330	462,427	443,650	397,240	375,437
DAM NON-NYCA	5,978	5,212	12,406	11,192	10,579	3,975	3,811
DAM WHEELS	4,800	6,150	800	700	4,800	3,600	6,085
DAM VIRTUAL	52,589	54,368	52,457	52,074	53,907	45,214	47,210
BALANCING NYCA	(13,761)	(14,612)	(14,152)	(3,246)	3,366	(1,720)	11,320
BALANCING NON-NYCA	6,357	11,803	9,437	13,475	3,655	825	1,030
BALANCING WHEELS	(2,925)	(3,166)	2,695	4,218	(302)	2,950	50
BALANCING VIRTUAL	(52,589)	(54,368)	(52,457)	(52,074)	(53,907)	(45,214)	(47,210)
LOSSES	6,971	8,811	7,362	9,607	9,530	8,693	9,381
	27	28	29	30			
DAM NYCA	430,315	435,064	421,650	419,784			
DAM NON-NYCA	5,030	6,739	5,161	5,949			
DAM WHEELS	4,350	4,050	4,050	5,750			
DAM VIRTUAL	52,976	57,590	52,417	42,584			
BALANCING NYCA	9,299	17,013	(1,065)	(7,593)			
BALANCING NON-NYCA	4,425	7,523	3,050	4,412			
BALANCING WHEELS	(928)	(129)	286	1,100			
BALANCING VIRTUAL	(52,976)	(57,590)	(52,417)	(42,584)			
LOSSES	9,946	9,076	9,508	10,112			



SETTLEMENTS REPORT
ATTACHMENT C: SEPTEMBER 2004 12-MONTH SETTLEMENT ADJUSTMENT
OCTOBER 21, 2005

12-MONTH SETTLEMENT ADJUSTMENT MARKET WITHDRAWALS ANALYSIS

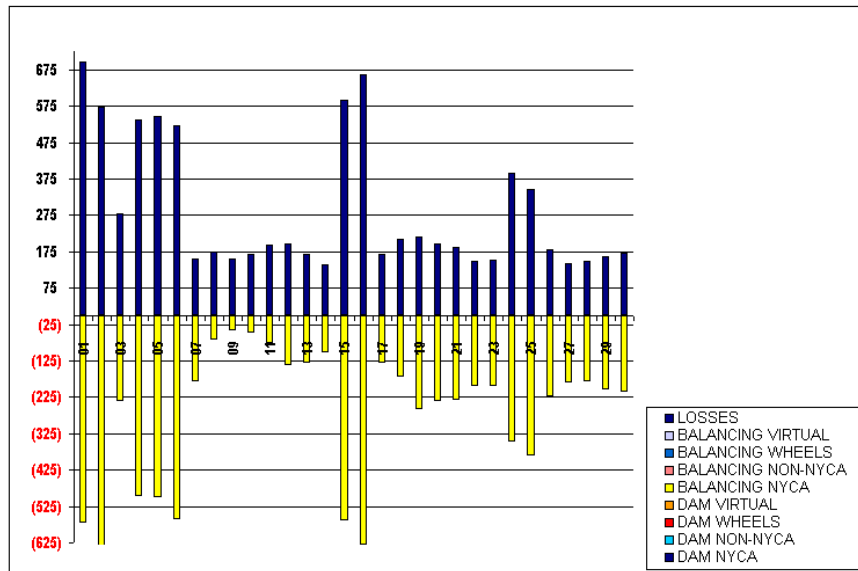
	MONDAY	TUESDAY	WEDNESDAY	THURSDAY	FRIDAY	SATURDAY	SUNDAY
			1	2	3	4	5
DAM NYCA			471,260	464,056	450,696	418,969	382,511
DAM NON-NYCA			7,326	7,169	4,807	3,969	8,065
DAM WHEELS			1,275	3,300	4,100	2,750	2,480
DAM VIRTUAL			59,246	54,987	55,350	73,728	60,312
BALANCING NYCA			2,934	(4,930)	13,438	22,560	11,346
BALANCING NON-NYCA			4,695	4,079	3,626	680	528
BALANCING WHEELS			(675)	(2,560)	(2,850)	(1,040)	(285)
BALANCING VIRTUAL			(69,246)	(64,987)	(65,350)	(73,728)	(60,312)
LOSSES			15,580	14,301	13,154	13,271	11,956
	6	7	8	9	10	11	12
DAM NYCA	384,468	454,950	454,501	473,045	463,061	402,179	384,068
DAM NON-NYCA	8,705	9,070	10,502	9,114	5,624	7,883	8,667
DAM WHEELS	300	5,000	7,700	4,700	4,600	2,000	2,400
DAM VIRTUAL	67,619	64,602	56,017	75,582	71,914	67,513	64,336
BALANCING NYCA	2,990	24,895	25,842	25,694	(2,360)	(3,344)	7,537
BALANCING NON-NYCA	381	4,182	1,789	6,785	4,996	3,264	1,553
BALANCING WHEELS	60	(2,192)	(6,325)	(1,863)	(2,822)	(465)	(2,050)
BALANCING VIRTUAL	(67,619)	(64,602)	(56,017)	(75,582)	(71,914)	(67,513)	(64,336)
LOSSES	12,230	12,992	13,069	14,075	13,512	11,703	11,105
	13	14	15	16	17	18	19
DAM NYCA	446,063	439,828	442,070	463,165	461,659	384,154	361,464
DAM NON-NYCA	9,193	7,043	11,287	10,870	7,050	6,505	8,619
DAM WHEELS	2,800	3,218	1,275	5,900	2,950	3,579	5,431
DAM VIRTUAL	64,696	63,702	66,046	61,650	59,769	43,311	45,077
BALANCING NYCA	21,632	8,241	1,243	1,193	387	14,649	(12,391)
BALANCING NON-NYCA	9,116	4,526	1,811	13,829	15,820	13,363	119
BALANCING WHEELS	(318)	(1,818)	(602)	(1,949)	(750)	1,516	(2,231)
BALANCING VIRTUAL	(64,696)	(63,702)	(66,046)	(61,650)	(59,769)	(43,311)	(45,077)
LOSSES	10,229	10,893	11,399	11,044	10,778	8,799	7,232
	20	21	22	23	24	25	26
DAM NYCA	416,773	432,232	454,330	462,427	443,650	397,240	375,437
DAM NON-NYCA	5,978	5,212	12,406	11,192	10,579	3,975	3,811
DAM WHEELS	4,800	6,150	800	700	4,800	3,600	6,085
DAM VIRTUAL	52,589	54,368	52,457	52,074	53,907	45,214	47,210
BALANCING NYCA	(13,999)	(14,845)	(14,246)	(8,441)	3,018	(2,108)	11,096
BALANCING NON-NYCA	6,357	11,603	9,437	13,475	3,655	825	1,030
BALANCING WHEELS	(2,925)	(3,166)	2,695	4,218	(202)	2,950	50
BALANCING VIRTUAL	(52,589)	(54,368)	(52,457)	(52,074)	(53,907)	(45,214)	(47,210)
LOSSES	7,167	8,998	7,512	9,759	9,920	9,038	9,562
	27	28	29	30			
DAM NYCA	430,315	435,064	421,650	419,784			
DAM NON-NYCA	5,030	6,739	5,161	5,949			
DAM WHEELS	4,350	4,050	4,050	5,750			
DAM VIRTUAL	52,976	57,580	52,417	42,584			
BALANCING NYCA	9,113	16,830	(1,270)	(7,303)			
BALANCING NON-NYCA	4,425	7,523	3,050	4,412			
BALANCING WHEELS	(928)	(129)	286	1,100			
BALANCING VIRTUAL	(52,976)	(57,580)	(52,417)	(42,584)			
LOSSES	10,088	9,224	9,670	10,282			



SETTLEMENTS REPORT
 ATTACHMENT C: SEPTEMBER 2004 12-MONTH SETTLEMENT ADJUSTMENT
 OCTOBER 21, 2005

12-MONTH SETTLEMENT ADJUSTMENT MARKET WITHDRAWALS DELTA ANALYSIS

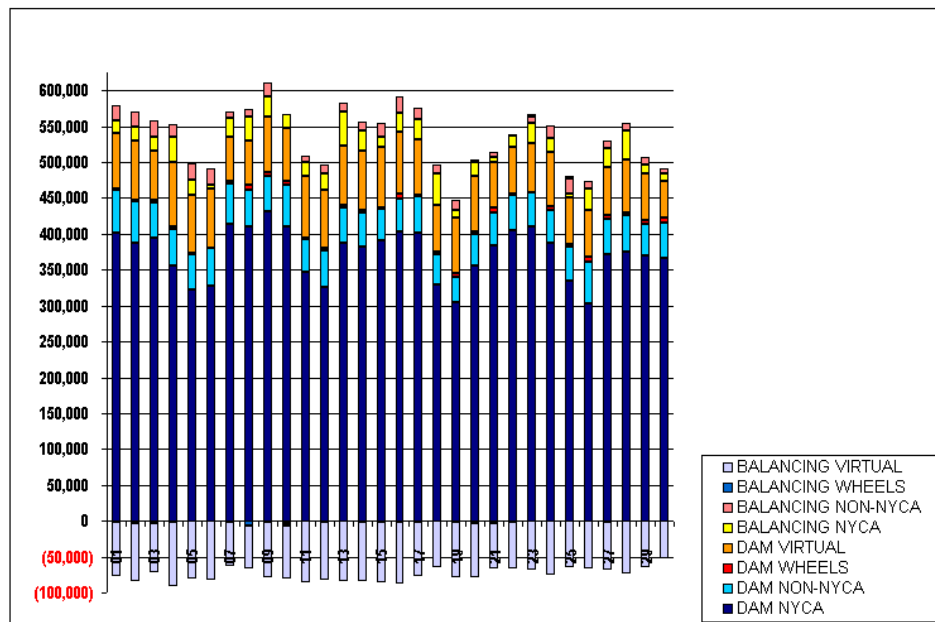
	MONDAY	TUESDAY	WEDNESDAY	THURSDAY	FRIDAY	SATURDAY	SUNDAY
			1	2	3	4	5
DAM NYCA			0	0	0	0	0
DAM NON-NYCA			0	0	0	0	0
DAM WHEELS			0	0	0	0	0
DAM VIRTUAL			0	0	0	0	0
BALANCING NYCA			(670)	(667)	(238)	(496)	(601)
BALANCING NON-NYCA			0	0	0	0	0
BALANCING WHEELS			0	0	0	0	0
BALANCING VIRTUAL			0	0	0	0	0
LOSSES			696	672	278	536	546
	6	7	8	9	10	11	12
DAM NYCA	0	0	0	0	0	0	0
DAM NON-NYCA	0	0	0	0	0	0	0
DAM WHEELS	0	0	0	0	0	0	0
DAM VIRTUAL	0	0	0	0	0	0	0
BALANCING NYCA	(562)	(181)	(68)	(44)	(60)	(77)	(138)
BALANCING NON-NYCA	0	0	0	0	0	0	0
BALANCING WHEELS	0	0	0	0	0	0	0
BALANCING VIRTUAL	0	0	0	0	0	0	0
LOSSES	523	156	174	156	168	193	195
	13	14	15	16	17	18	19
DAM NYCA	0	0	0	0	0	0	0
DAM NON-NYCA	0	0	0	0	0	0	0
DAM WHEELS	0	0	0	0	0	0	0
DAM VIRTUAL	0	0	0	0	0	0	0
BALANCING NYCA	(131)	(104)	(665)	(630)	(132)	(170)	(258)
BALANCING NON-NYCA	0	0	0	0	0	0	0
BALANCING WHEELS	0	0	0	0	0	0	0
BALANCING VIRTUAL	0	0	0	0	0	0	0
LOSSES	166	140	593	662	169	210	214
	20	21	22	23	24	25	26
DAM NYCA	0	0	0	0	0	0	0
DAM NON-NYCA	0	0	0	0	0	0	0
DAM WHEELS	0	0	0	0	0	0	0
DAM VIRTUAL	0	0	0	0	0	0	0
BALANCING NYCA	(238)	(232)	(194)	(195)	(348)	(388)	(224)
BALANCING NON-NYCA	0	0	0	0	0	0	0
BALANCING WHEELS	0	0	0	0	0	0	0
BALANCING VIRTUAL	0	0	0	0	0	0	0
LOSSES	196	188	150	152	389	345	182
	27	28	29	30			
DAM NYCA	0	0	0	0			
DAM NON-NYCA	0	0	0	0			
DAM WHEELS	0	0	0	0			
DAM VIRTUAL	0	0	0	0			
BALANCING NYCA	(185)	(182)	(205)	(210)			
BALANCING NON-NYCA	0	0	0	0			
BALANCING WHEELS	0	0	0	0			
BALANCING VIRTUAL	0	0	0	0			
LOSSES	142	148	163	170			



SETTLEMENTS REPORT
ATTACHMENT C: SEPTEMBER 2004 12-MONTH SETTLEMENT ADJUSTMENT
OCTOBER 21, 2005

4-MONTH SETTLEMENT ADJUSTMENT MARKET SUPPLY ANALYSIS

	MONDAY	TUESDAY	WEDNESDAY	THURSDAY	FRIDAY	SATURDAY	SUNDAY
			1	2	3	4	5
DAM NYCA			401,356	387,980	393,700	354,906	321,954
DAM NON-NYCA			60,775	56,813	49,569	52,050	48,871
DAM WHEELS			1,275	3,300	4,100	2,750	2,480
DAM VIRTUAL			76,324	81,946	68,586	90,142	81,165
BALANCING NYCA			17,672	19,553	19,690	34,716	21,250
BALANCING NON-NYCA			21,866	20,414	22,723	17,737	22,285
BALANCING WHEELS			(675)	(2,560)	(2,850)	(1,040)	(285)
BALANCING VIRTUAL			(76,324)	(81,946)	(68,586)	(90,142)	(81,165)
	6	7	8	9	10	11	12
DAM NYCA	328,107	414,009	409,658	431,170	409,742	347,070	325,144
DAM NON-NYCA	52,002	55,494	51,618	50,361	59,258	45,469	52,496
DAM WHEELS	300	5,000	7,700	4,700	4,600	2,000	2,400
DAM VIRTUAL	81,939	60,105	60,633	76,984	74,823	85,406	80,895
BALANCING NYCA	5,539	26,194	34,185	27,670	19,318	19,707	22,586
BALANCING NON-NYCA	23,666	10,418	10,136	19,550	(3,604)	9,323	12,547
BALANCING WHEELS	60	(2,192)	(6,325)	(1,863)	(2,822)	(465)	(2,050)
BALANCING VIRTUAL	(81,999)	(60,105)	(60,633)	(76,984)	(74,823)	(85,406)	(80,895)
	13	14	15	16	17	18	19
DAM NYCA	386,855	381,606	390,491	403,145	401,908	330,247	304,186
DAM NON-NYCA	50,370	48,551	44,130	46,392	50,009	41,485	35,960
DAM WHEELS	2,800	3,318	1,275	5,900	2,950	3,579	5,431
DAM VIRTUAL	83,294	81,667	84,746	86,064	76,389	64,669	76,180
BALANCING NYCA	47,577	28,864	14,907	27,864	28,406	43,704	10,573
BALANCING NON-NYCA	11,536	11,574	18,554	22,668	15,335	11,995	14,378
BALANCING WHEELS	(218)	(1,318)	(602)	(1,949)	(750)	1,516	(2,231)
BALANCING VIRTUAL	(83,294)	(81,667)	(84,746)	(86,064)	(76,389)	(64,669)	(76,180)
	20	21	22	23	24	25	26
DAM NYCA	355,876	383,867	404,629	410,585	387,971	333,835	302,567
DAM NON-NYCA	43,472	45,000	50,046	46,842	45,722	47,459	58,913
DAM WHEELS	4,800	6,150	800	700	4,800	3,600	6,085
DAM VIRTUAL	76,478	63,602	64,864	68,409	74,933	65,381	66,175
BALANCING NYCA	19,059	8,235	16,324	28,664	20,936	5,896	29,951
BALANCING NON-NYCA	3,811	6,244	(1,616)	7,364	15,961	21,823	9,647
BALANCING WHEELS	(2,925)	(3,166)	2,695	4,218	(302)	2,950	50
BALANCING VIRTUAL	(76,478)	(63,602)	(64,864)	(68,409)	(74,933)	(65,381)	(66,175)
	27	28	29	30			
DAM NYCA	372,045	375,524	370,492	366,660			
DAM NON-NYCA	49,603	49,878	44,177	49,614			
DAM WHEELS	4,350	4,050	4,050	5,750			
DAM VIRTUAL	67,127	74,326	64,914	62,405			
BALANCING NYCA	27,110	40,834	12,647	10,487			
BALANCING NON-NYCA	10,357	9,180	10,988	5,903			
BALANCING WHEELS	(928)	(129)	286	1,100			
BALANCING VIRTUAL	(67,127)	(74,326)	(64,914)	(62,405)			

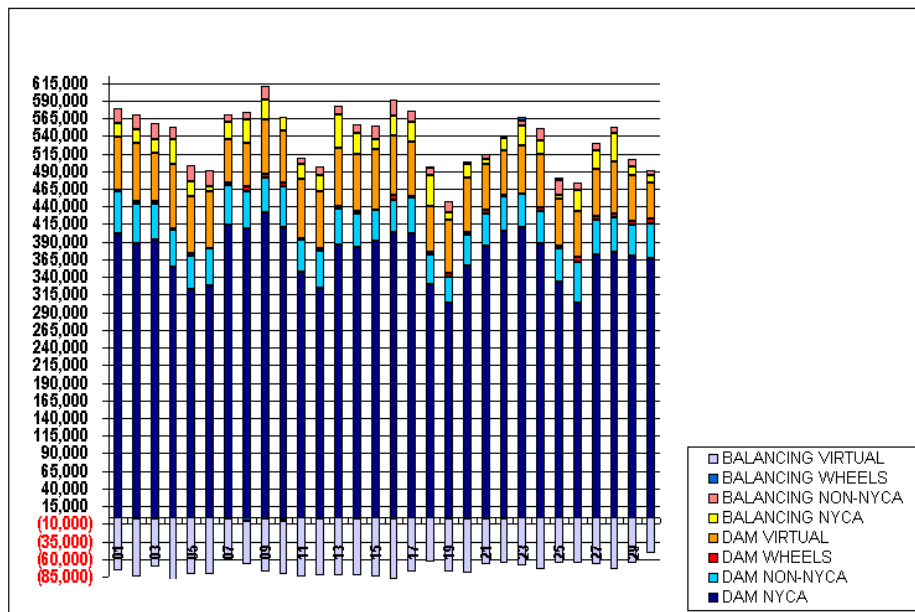


FOR DISCUSSION PURPOSES ONLY

SETTLEMENTS REPORT
ATTACHMENT C: SEPTEMBER 2004 12-MONTH SETTLEMENT ADJUSTMENT
OCTOBER 21, 2005

12-MONTH SETTLEMENT ADJUSTMENT MARKET SUPPLY ANALYSIS

	MONDAY	TUESDAY	WEDNESDAY	THURSDAY	FRIDAY	SATURDAY	SUNDAY
			1	2	3	4	5
DAM NYCA			401,356	387,871	393,700	354,906	321,954
DAM NON-NYCA			60,775	56,813	49,569	52,050	48,871
DAM WHEELS			1,275	3,300	4,100	2,750	2,480
DAM VIRTUAL			76,324	81,946	68,586	90,142	81,165
BALANCING NYCA			17,738	19,577	19,729	34,756	21,294
BALANCING NON-NYCA			21,866	20,414	22,723	17,737	22,285
BALANCING WHEELS			(675)	(2,560)	(2,850)	(1,040)	(285)
BALANCING VIRTUAL			(76,324)	(81,946)	(68,586)	(90,142)	(81,165)
	6	7	8	9	10	11	12
DAM NYCA	328,107	414,009	409,658	431,170	409,742	347,070	325,144
DAM NON-NYCA	52,002	55,494	51,618	50,361	59,258	45,469	52,496
DAM WHEELS	300	5,000	7,700	4,700	4,600	2,000	2,400
DAM VIRTUAL	81,999	60,105	60,633	76,984	74,823	85,406	80,895
BALANCING NYCA	5,499	26,169	34,291	27,782	19,437	19,822	22,643
BALANCING NON-NYCA	23,666	10,418	10,136	19,550	(3,604)	9,323	12,647
BALANCING WHEELS	60	(2,192)	(6,325)	(1,863)	(2,822)	(465)	(2,050)
BALANCING VIRTUAL	(81,999)	(60,105)	(60,633)	(76,984)	(74,823)	(85,406)	(80,895)
	13	14	15	16	17	18	19
DAM NYCA	386,855	381,606	390,491	403,145	401,908	330,247	304,186
DAM NON-NYCA	50,370	48,551	44,130	46,292	50,009	41,485	35,960
DAM WHEELS	2,800	3,318	1,275	5,900	2,950	3,579	5,431
DAM VIRTUAL	83,294	81,667	84,746	86,064	76,389	64,669	76,180
BALANCING NYCA	47,613	28,900	14,935	27,896	28,442	43,743	10,529
BALANCING NON-NYCA	11,596	11,574	18,554	22,668	15,335	11,995	14,378
BALANCING WHEELS	(318)	(1,818)	(602)	(1,949)	(750)	1,516	(2,231)
BALANCING VIRTUAL	(83,294)	(81,667)	(84,746)	(86,064)	(76,389)	(64,669)	(76,180)
	20	21	22	23	24	25	26
DAM NYCA	355,876	383,867	404,629	410,585	387,971	333,835	302,567
DAM NON-NYCA	43,472	46,000	50,046	46,842	45,722	47,459	58,913
DAM WHEELS	4,800	6,150	800	700	4,800	3,600	6,085
DAM VIRTUAL	76,478	63,602	64,864	68,409	74,933	65,381	66,175
BALANCING NYCA	19,018	8,191	16,280	28,621	20,978	5,853	29,809
BALANCING NON-NYCA	3,811	6,244	(1,616)	7,364	15,951	21,823	9,647
BALANCING WHEELS	(2,925)	(3,166)	2,695	4,218	(302)	2,950	50
BALANCING VIRTUAL	(76,478)	(63,602)	(64,864)	(68,409)	(74,933)	(65,381)	(66,175)
	27	28	29	30			
DAM NYCA	372,045	375,524	370,492	366,660			
DAM NON-NYCA	49,503	49,878	44,177	49,614			
DAM WHEELS	4,350	4,050	4,050	5,750			
DAM VIRTUAL	67,127	74,326	64,914	52,405			
BALANCING NYCA	27,066	40,799	12,604	10,447			
BALANCING NON-NYCA	10,357	9,180	10,988	5,903			
BALANCING WHEELS	(928)	(129)	286	1,100			
BALANCING VIRTUAL	(67,127)	(74,326)	(64,914)	(52,405)			



FOR DISCUSSION PURPOSES ONLY

SETTLEMENTS REPORT
 ATTACHMENT C: SEPTEMBER 2004 12-MONTH SETTLEMENT ADJUSTMENT
 OCTOBER 21, 2005

12-MONTH SETTLEMENT ADJUSTMENT MARKET SUPPLY DELTA ANALYSIS

	MONDAY	TUESDAY	WEDNESDAY	THURSDAY	FRIDAY	SATURDAY	SUNDAY
			1	2	3	4	5
DAM NYCA			0	(109)	0	0	0
DAM NON-NYCA			0	0	0	0	0
DAM WHEELS			0	0	0	0	0
DAM VIRTUAL			0	0	0	0	0
BALANCING NYCA			126	24	40	40	44
BALANCING NON-NYCA			0	0	0	0	0
BALANCING WHEELS			0	0	0	0	0
BALANCING VIRTUAL			0	0	0	0	0
	6	7	8	9	10	11	12
DAM NYCA	0	0	0	0	0	0	0
DAM NON-NYCA	0	0	0	0	0	0	0
DAM WHEELS	0	0	0	0	0	0	0
DAM VIRTUAL	0	0	0	0	0	0	0
BALANCING NYCA	(40)	(25)	106	112	119	116	57
BALANCING NON-NYCA	0	0	0	0	0	0	0
BALANCING WHEELS	0	0	0	0	0	0	0
BALANCING VIRTUAL	0	0	0	0	0	0	0
	13	14	15	16	17	18	19
DAM NYCA	0	0	0	0	0	0	0
DAM NON-NYCA	0	0	0	0	0	0	0
DAM WHEELS	0	0	0	0	0	0	0
DAM VIRTUAL	0	0	0	0	0	0	0
BALANCING NYCA	35	36	28	32	37	40	(43)
BALANCING NON-NYCA	0	0	0	0	0	0	0
BALANCING WHEELS	0	0	0	0	0	0	0
BALANCING VIRTUAL	0	0	0	0	0	0	0
	20	21	22	23	24	25	26
DAM NYCA	0	0	0	0	0	0	0
DAM NON-NYCA	0	0	0	0	0	0	0
DAM WHEELS	0	0	0	0	0	0	0
DAM VIRTUAL	0	0	0	0	0	0	0
BALANCING NYCA	(41)	(44)	(44)	(43)	42	(43)	(43)
BALANCING NON-NYCA	0	0	0	0	0	0	0
BALANCING WHEELS	0	0	0	0	0	0	0
BALANCING VIRTUAL	0	0	0	0	0	0	0
	27	28	29	30			
DAM NYCA	0	0	0	0			
DAM NON-NYCA	0	0	0	0			
DAM WHEELS	0	0	0	0			
DAM VIRTUAL	0	0	0	0			
BALANCING NYCA	(44)	(35)	(43)	(40)			
BALANCING NON-NYCA	0	0	0	0			
BALANCING WHEELS	0	0	0	0			
BALANCING VIRTUAL	0	0	0	0			

