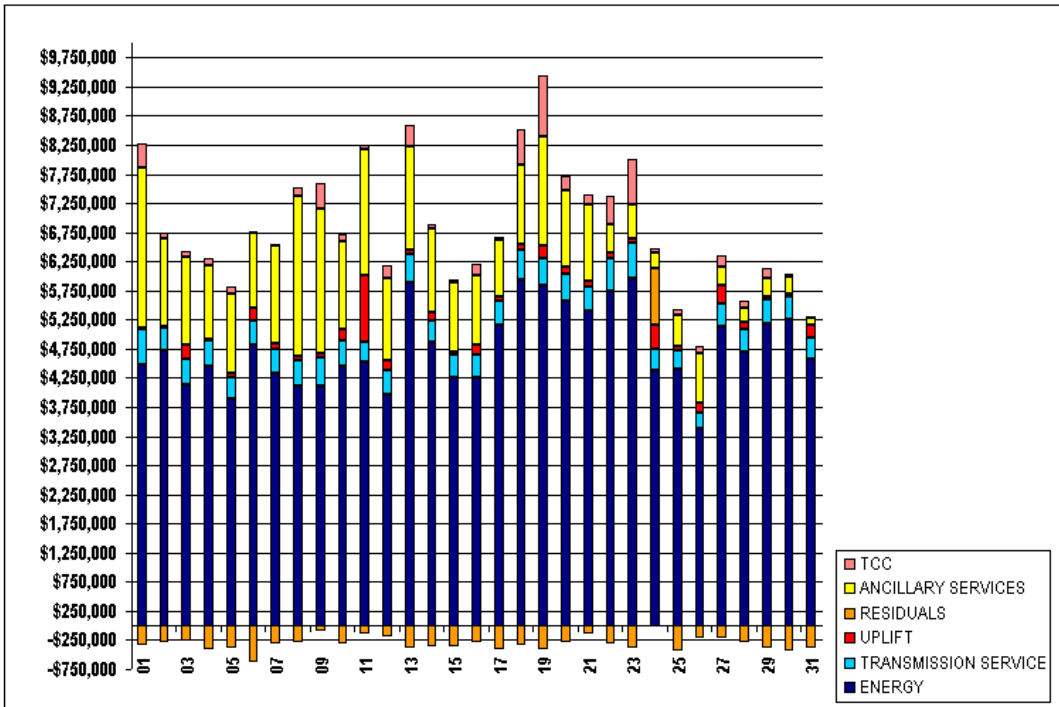


SETTLEMENTS REPORT
ATTACHMENT D: MARCH 2000 CLOSEOUT SETTLEMENT
OCTOBER 21, 2005

24-MONTH SETTLEMENT ADJUSTMENT MARKET COSTS

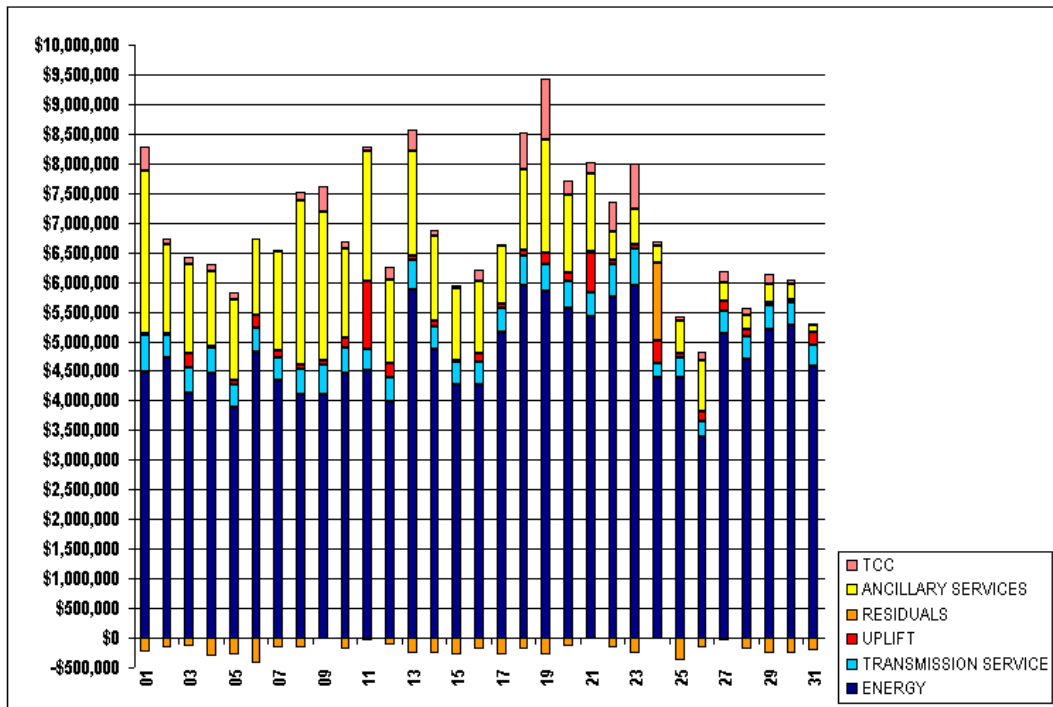
	MONDAY	TUESDAY	WEDNESDAY	THURSDAY	FRIDAY	SATURDAY	SUNDAY
ENERGY				\$4,476,328.29	\$4,716,403.62	\$4,140,749.80	\$4,451,645.29
TRANSMISSION SERVICE				\$615,947.41	\$396,419.50	\$432,678.02	\$434,194.63
UPLIFT				\$23,349.40	\$32,489.39	\$247,858.14	\$39,277.92
RESIDUALS				(\$347,228.39)	(\$286,357.79)	(\$261,384.13)	(\$412,841.07)
ANCILLARY SERVICES				\$2,753,830.59	\$1,494,085.23	\$1,501,172.39	\$1,245,913.28
TCC				\$402,472.82	\$102,162.36	\$98,348.48	\$139,884.15
	5	6	7	8	9	10	11
ENERGY	\$3,885,165.46	\$4,813,928.98	\$4,335,599.68	\$4,110,237.24	\$4,102,807.23	\$4,461,848.96	\$4,516,302.37
TRANSMISSION SERVICE	\$378,121.28	\$415,468.31	\$400,073.93	\$430,145.38	\$494,255.75	\$422,201.97	\$345,892.26
UPLIFT	\$77,429.43	\$222,246.89	\$118,130.66	\$74,281.47	\$72,664.64	\$193,043.10	\$1,160,307.33
RESIDUALS	(\$379,316.09)	(\$618,795.03)	(\$300,758.07)	(\$283,615.39)	(\$89,304.28)	(\$314,310.71)	(\$151,210.33)
ANCILLARY SERVICES	\$1,359,006.31	\$1,298,678.55	\$1,672,411.12	\$2,766,819.53	\$2,487,813.60	\$1,525,879.70	\$2,156,149.69
TCC	\$116,672.36	\$10,974.61	\$20,580.71	\$145,496.84	\$437,141.32	\$122,072.75	\$64,903.94
	12	13	14	15	16	17	18
ENERGY	\$3,979,982.02	\$5,878,639.89	\$4,865,162.68	\$4,264,904.89	\$4,263,049.04	\$5,154,933.28	\$5,948,464.06
TRANSMISSION SERVICE	\$412,571.78	\$492,418.88	\$373,704.29	\$381,708.37	\$396,450.68	\$408,123.91	\$497,159.86
UPLIFT	\$159,946.73	\$81,342.03	\$131,064.77	\$49,241.95	\$152,220.48	\$93,276.24	\$108,235.36
RESIDUALS	(\$200,773.31)	(\$387,027.96)	(\$367,768.71)	(\$371,295.25)	(\$287,294.77)	(\$409,822.75)	(\$336,789.98)
ANCILLARY SERVICES	\$1,420,267.07	\$1,778,221.06	\$1,432,340.28	\$1,195,520.85	\$1,192,251.16	\$974,158.19	\$1,344,473.62
TCC	\$207,719.60	\$354,337.62	\$73,386.95	\$50,236.71	\$189,766.99	\$31,273.54	\$622,468.91
	19	20	21	22	23	24	25
ENERGY	\$5,841,808.15	\$5,565,062.72	\$5,410,940.11	\$5,751,518.07	\$5,953,442.49	\$4,385,194.75	\$4,397,712.39
TRANSMISSION SERVICE	\$461,245.45	\$461,698.63	\$414,260.41	\$542,779.18	\$621,357.11	\$364,725.12	\$331,842.55
UPLIFT	\$209,196.87	\$136,127.25	\$78,512.40	\$100,180.21	\$74,778.94	\$413,032.83	\$58,939.87
RESIDUALS	(\$413,373.84)	(\$276,993.90)	(\$133,245.34)	(\$312,066.33)	(\$385,379.23)	\$959,046.20	(\$433,073.57)
ANCILLARY SERVICES	\$1,887,089.60	\$1,301,843.08	\$1,312,829.64	\$490,469.79	\$581,978.39	\$284,505.15	\$552,986.72
TCC	\$1,041,196.80	\$238,109.76	\$189,685.93	\$497,847.51	\$765,011.17	\$71,128.89	\$74,249.28
	26	27	28	29	30		
ENERGY	\$3,394,090.01	\$5,130,463.14	\$4,708,063.33	\$5,183,231.71	\$5,265,725.77		
TRANSMISSION SERVICE	\$256,252.95	\$392,186.52	\$381,614.06	\$411,673.63	\$392,382.80		
UPLIFT	\$173,493.30	\$317,292.74	\$123,508.43	\$62,792.75	\$48,261.49		
RESIDUALS	(\$209,837.29)	(\$207,583.67)	(\$297,988.62)	(\$385,327.66)	(\$440,544.94)		
ANCILLARY SERVICES	\$852,058.33	\$310,327.14	\$232,439.84	\$295,294.13	\$272,771.74		
TCC	\$129,420.62	\$194,924.76	\$117,780.48	\$183,967.29	\$61,652.15		



SETTLEMENTS REPORT
ATTACHMENT D: MARCH 2000 CLOSEOUT SETTLEMENT
OCTOBER 21, 2005

CLOSEOUT SETTLEMENT MARKET COSTS

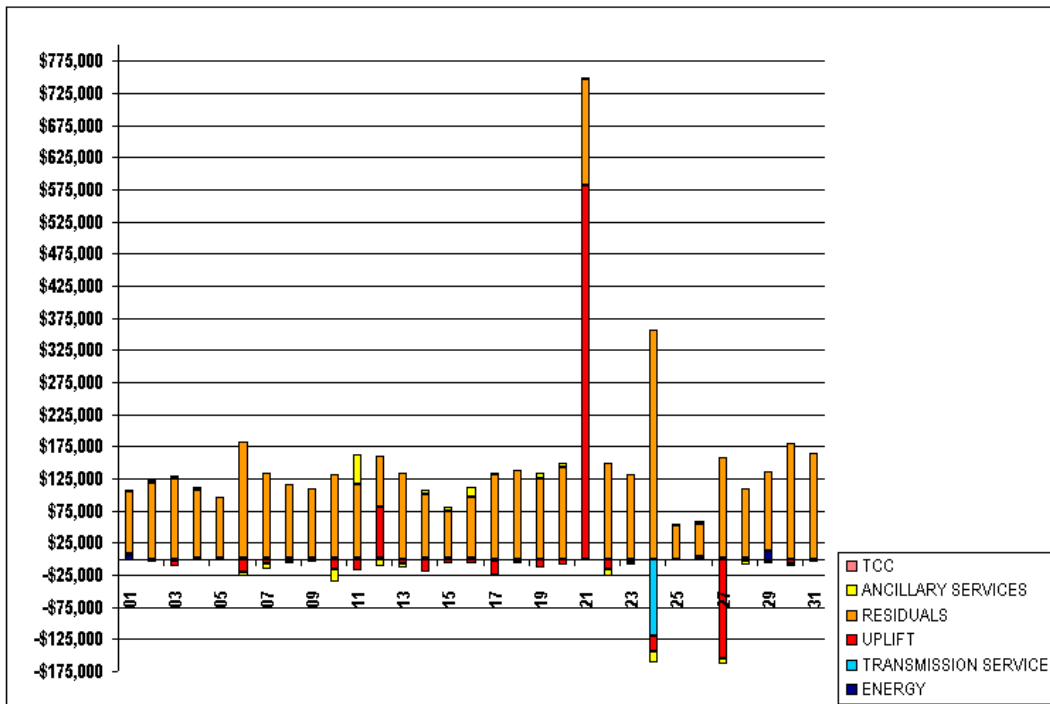
	MONDAY	TUESDAY	WEDNESDAY	THURSDAY	FRIDAY	SATURDAY	SUNDAY
ENERGY			1	2	3	4	5
TRANSMISSION SERVICE			\$4,483,282.58	\$4,716,158.48	\$4,137,114.82	\$4,452,473.21	\$3,885,616.28
UPLIFT			\$616,939.28	\$396,538.84	\$432,652.80	\$434,178.25	\$378,125.70
RESIDUALS			\$22,057.18	\$28,241.72	\$239,080.84	\$37,262.10	\$74,408.83
ANCILLARY SERVICES			(\$249,151.45)	(\$167,274.23)	(\$135,591.84)	(\$306,009.13)	(\$284,012.51)
TCC			\$2,756,232.99	\$1,498,747.58	\$1,503,765.33	\$1,249,159.96	\$1,360,295.16
	6	7	8	9	10	11	12
ENERGY	\$4,816,101.25	\$4,336,998.47	\$4,111,229.32	\$4,103,529.10	\$4,462,504.36	\$4,517,423.08	\$3,981,014.85
TRANSMISSION SERVICE	\$415,402.63	\$399,951.57	\$429,996.32	\$494,183.15	\$422,183.20	\$345,906.28	\$411,150.10
UPLIFT	\$201,105.41	\$110,249.70	\$70,501.77	\$69,130.21	\$175,870.19	\$1,142,318.45	\$239,348.03
RESIDUALS	(\$439,077.74)	(\$169,319.74)	(\$169,205.59)	\$19,979.93	(\$183,247.26)	(\$35,421.16)	(\$120,669.71)
ANCILLARY SERVICES	\$1,292,244.05	\$1,663,146.13	\$2,762,682.69	\$2,485,904.91	\$1,507,918.77	\$2,202,463.32	\$1,410,952.35
TCC	\$10,974.61	\$20,576.15	\$145,331.96	\$437,132.68	\$122,072.75	\$64,903.94	\$208,283.12
	13	14	15	16	17	18	19
ENERGY	\$5,877,983.90	\$4,866,344.51	\$4,265,299.09	\$4,263,588.61	\$5,151,003.33	\$5,947,045.44	\$5,840,814.81
TRANSMISSION SERVICE	\$492,435.55	\$373,726.14	\$381,720.39	\$396,465.08	\$408,171.46	\$497,149.84	\$461,238.02
UPLIFT	\$73,816.80	\$110,102.45	\$42,194.52	\$144,620.73	\$71,981.40	\$103,823.13	\$195,328.95
RESIDUALS	(\$253,971.05)	(\$268,538.62)	(\$296,412.03)	(\$190,760.34)	(\$278,066.81)	(\$199,365.06)	(\$288,056.49)
ANCILLARY SERVICES	\$1,772,648.58	\$1,438,903.27	\$1,201,778.85	\$1,206,050.14	\$976,093.73	\$1,341,986.31	\$1,894,618.66
TCC	\$354,337.62	\$73,386.95	\$50,236.71	\$189,766.99	\$31,272.82	\$622,468.91	\$1,041,196.80
	20	21	22	23	24	25	26
ENERGY	\$5,563,445.05	\$5,409,186.58	\$5,749,783.39	\$5,951,486.72	\$4,384,358.78	\$4,397,839.91	\$3,394,286.46
TRANSMISSION SERVICE	\$461,707.37	\$414,325.09	\$542,753.13	\$621,334.48	\$246,600.55	\$331,861.83	\$254,514.42
UPLIFT	\$127,566.85	\$660,772.43	\$85,161.55	\$69,263.75	\$388,712.54	\$58,864.53	\$176,189.61
RESIDUALS	(\$134,257.91)	\$30,657.15	(\$163,708.32)	(\$253,798.86)	\$1,315,776.85	(\$381,095.48)	(\$159,206.29)
ANCILLARY SERVICES	\$1,308,280.84	\$1,316,916.25	\$479,607.14	\$580,648.69	\$265,305.55	\$555,523.57	\$857,563.11
TCC	\$238,109.76	\$189,685.93	\$497,514.97	\$765,011.17	\$71,128.89	\$74,249.28	\$129,420.62
	27	28	29	30	31		
ENERGY	\$5,132,502.73	\$4,709,983.93	\$5,195,053.66	\$5,264,411.79	\$4,581,301.83		
TRANSMISSION SERVICE	\$391,938.82	\$381,651.34	\$411,895.73	\$392,369.32	\$361,552.48		
UPLIFT	\$162,722.73	\$120,633.79	\$58,221.71	\$43,217.91	\$206,952.22		
RESIDUALS	(\$50,890.28)	(\$190,645.33)	(\$261,344.37)	(\$261,116.25)	(\$212,252.74)		
ANCILLARY SERVICES	\$301,147.86	\$225,603.42	\$291,658.70	\$266,930.83	\$126,468.70		
TCC	\$194,924.76	\$117,780.48	\$183,967.29	\$61,652.15	\$32,057.34		



SETTLEMENTS REPORT
ATTACHMENT D: MARCH 2000 CLOSEOUT SETTLEMENT
OCTOBER 21, 2005

CLOSEOUT SETTLEMENT MARKET COSTS DELTA

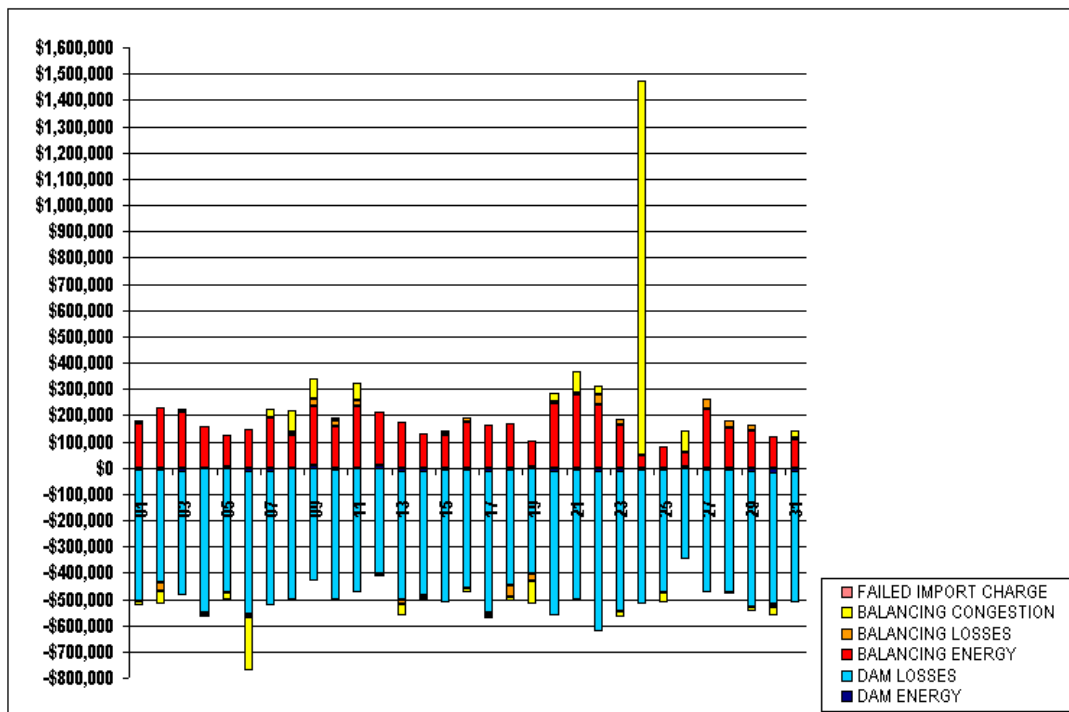
	MONDAY	TUESDAY	WEDNESDAY	THURSDAY	FRIDAY	SATURDAY	SUNDAY
			1	2	3	4	5
ENERGY			\$6,954.29	(\$245.14)	(\$3,634.98)	\$827.92	\$450.82
TRANSMISSION SERVICE			\$991.87	\$119.34	(\$25.22)	(\$16.38)	\$4.42
UPLIFT			(\$1,292.22)	(\$4,247.67)	(\$8,777.30)	(\$2,015.82)	(\$3,020.60)
RESIDUALS			\$98,076.94	\$119,083.56	\$125,792.29	\$106,831.94	\$95,303.58
ANCILLARY SERVICES			\$2,402.40	\$4,662.35	\$2,592.94	\$3,246.68	\$1,288.85
TCC			(\$950.80)	(\$79.55)	\$0.00	\$0.00	\$0.00
	6	7	8	9	10	11	12
ENERGY	\$2,172.27	\$1,398.79	\$992.08	\$721.87	\$655.40	\$1,120.71	\$1,032.83
TRANSMISSION SERVICE	(\$65.68)	(\$122.36)	(\$149.06)	(\$72.60)	(\$18.77)	\$14.02	(\$1,421.68)
UPLIFT	(\$21,141.48)	(\$7,880.96)	(\$3,779.70)	(\$3,534.43)	(\$17,172.91)	(\$17,988.88)	\$79,401.30
RESIDUALS	\$179,717.29	\$131,438.33	\$114,409.80	\$109,284.21	\$131,063.45	\$115,789.17	\$80,103.60
ANCILLARY SERVICES	(\$6,434.50)	(\$9,264.99)	(\$4,136.84)	(\$1,908.69)	(\$17,960.93)	\$46,313.63	(\$9,314.72)
TCC	\$0.00	(\$4.56)	(\$164.88)	(\$8.64)	\$0.00	\$0.00	\$563.52
	13	14	15	16	17	18	19
ENERGY	(\$655.99)	\$1,181.83	\$394.20	\$539.57	(\$3,929.95)	(\$1,418.62)	(\$993.34)
TRANSMISSION SERVICE	\$16.67	\$21.85	\$12.02	\$14.40	\$47.55	(\$10.02)	(\$7.43)
UPLIFT	(\$7,525.23)	(\$20,962.32)	(\$7,047.43)	(\$7,599.75)	(\$21,294.84)	(\$4,412.23)	(\$13,867.92)
RESIDUALS	\$133,056.91	\$99,230.09	\$74,883.22	\$96,534.43	\$131,755.94	\$137,424.92	\$125,317.35
ANCILLARY SERVICES	(\$5,572.48)	\$6,562.99	\$6,258.00	\$13,798.98	\$1,935.54	(\$2,487.31)	\$7,529.06
TCC	\$0.00	\$0.00	\$0.00	\$0.00	(\$0.72)	\$0.00	\$0.00
	20	21	22	23	24	25	26
ENERGY	(\$1,617.67)	(\$1,753.53)	(\$1,734.68)	(\$1,955.77)	(\$835.97)	\$127.52	\$196.45
TRANSMISSION SERVICE	\$8.74	\$64.68	(\$26.05)	(\$22.63)	(\$118,124.57)	\$19.28	(\$1,738.53)
UPLIFT	(\$8,560.40)	\$582,260.03	(\$15,018.66)	(\$5,515.19)	(\$24,320.29)	(\$75.34)	\$2,696.31
RESIDUALS	\$142,735.99	\$163,902.49	\$148,358.01	\$131,580.37	\$356,730.65	\$51,978.09	\$50,631.00
ANCILLARY SERVICES	\$6,437.76	\$4,086.61	(\$10,862.65)	(\$1,329.70)	(\$19,199.60)	\$2,536.85	\$5,504.78
TCC	\$0.00	\$0.00	(\$332.54)	\$0.00	\$0.00	\$0.00	\$0.00
	27	28	29	30	31		
ENERGY	\$2,039.59	\$1,920.60	\$11,821.95	(\$1,313.98)	(\$1,446.96)		
TRANSMISSION SERVICE	(\$247.70)	\$37.28	\$222.10	(\$13.48)	\$56.72		
UPLIFT	(\$154,570.01)	(\$2,874.64)	(\$4,571.04)	(\$5,043.58)	(\$1,271.59)		
RESIDUALS	\$156,693.39	\$107,343.29	\$123,983.29	\$179,428.69	\$164,009.46		
ANCILLARY SERVICES	(\$9,179.28)	(\$6,836.42)	(\$3,635.43)	(\$5,840.91)	(\$3,015.36)		
TCC	\$0.00	\$0.00	\$0.00	\$0.00	\$0.00		



SETTLEMENTS REPORT
ATTACHMENT D: MARCH 2000 CLOSEOUT SETTLEMENT
OCTOBER 21, 2005

24-MONTH SETTLEMENT ADJUSTMENT MARKET RESIDUALS

	MONDAY	TUESDAY	WEDNESDAY	THURSDAY	FRIDAY	SATURDAY	SUNDAY
				1	2	3	4
DAM ENERGY				(\$6,280.13)	(\$6,434.45)	(\$10,792.38)	(\$4,170.98)
DAM LOSSES				(\$500,525.89)	(\$428,773.40)	(\$476,467.21)	(\$545,919.37)
BALANCING ENERGY				\$169,409.19	\$231,004.36	\$212,438.34	\$156,037.67
BALANCING LOSSES				\$8,236.45	(\$32,915.23)	\$4,039.10	(\$8,786.43)
BALANCING CONGESTION				(\$18,344.74)	(\$49,507.92)	\$8,191.02	(\$10,441.94)
FAILED IMPORT CHARGE				\$0.00	\$0.00	\$0.00	\$0.00
	5	6	7	8	9	10	11
DAM ENERGY	\$3,434.16	(\$11,213.37)	(\$10,524.46)	(\$3,379.00)	\$7,901.65	(\$9,667.01)	(\$3,555.01)
DAM LOSSES	(\$476,219.18)	(\$547,921.73)	(\$514,156.52)	(\$498,488.13)	(\$429,795.64)	(\$495,506.13)	(\$471,421.66)
BALANCING ENERGY	\$119,114.14	\$148,719.03	\$190,117.98	\$127,036.94	\$225,074.31	\$160,140.46	\$237,115.10
BALANCING LOSSES	\$812.42	(\$12,093.44)	\$3,292.20	\$7,067.89	\$32,142.63	\$22,377.29	\$18,808.71
BALANCING CONGESTION	(\$26,894.81)	(\$198,894.60)	\$29,682.87	\$83,663.95	\$75,218.84	\$7,696.47	\$67,331.36
FAILED IMPORT CHARGE	\$0.00	\$0.00	\$0.00	\$0.00	\$0.00	\$0.00	\$0.00
	12	13	14	15	16	17	18
DAM ENERGY	\$7,437.32	(\$11,530.86)	(\$11,299.53)	(\$8,359.22)	(\$4,796.90)	(\$12,717.67)	(\$9,793.57)
DAM LOSSES	(\$402,666.64)	(\$488,754.51)	(\$475,367.86)	(\$503,246.99)	(\$456,065.23)	(\$541,133.24)	(\$437,156.27)
BALANCING ENERGY	\$205,447.52	\$174,898.77	\$131,540.80	\$126,883.25	\$172,272.44	\$165,568.46	\$169,063.53
BALANCING LOSSES	(\$3,143.82)	(\$16,892.40)	(\$9,768.45)	\$9,325.68	\$17,006.10	(\$12,135.42)	(\$45,873.47)
BALANCING CONGESTION	(\$8,600.98)	(\$45,522.25)	(\$3,882.64)	\$3,656.72	(\$15,992.63)	(\$10,374.68)	(\$13,239.66)
FAILED IMPORT CHARGE	\$0.00	\$0.00	\$0.00	\$0.00	\$0.00	\$0.00	\$0.00
	19	20	21	22	23	24	25
DAM ENERGY	\$942.54	(\$13,024.37)	(\$8,591.81)	(\$12,773.62)	(\$12,537.70)	(\$8,677.93)	(\$6,940.22)
DAM LOSSES	(\$401,575.49)	(\$550,315.23)	(\$494,812.53)	(\$609,800.15)	(\$535,982.54)	(\$507,910.34)	(\$465,967.98)
BALANCING ENERGY	\$103,090.12	\$243,188.75	\$278,866.55	\$239,707.34	\$160,805.12	\$45,344.54	\$79,142.22
BALANCING LOSSES	(\$32,208.23)	\$9,495.46	\$7,352.34	\$40,505.58	\$23,912.74	(\$1,090.38)	(\$4,243.43)
BALANCING CONGESTION	(\$84,398.81)	\$32,273.32	\$82,771.21	\$29,763.74	(\$21,968.74)	\$1,430,279.20	(\$35,098.94)
FAILED IMPORT CHARGE	\$0.00	\$0.00	\$0.00	\$0.00	\$0.00	\$0.00	\$0.00
	26	27	28	29	30		
DAM ENERGY	\$4,548.14	(\$9,151.64)	(\$6,958.60)	(\$15,201.55)	(\$16,094.32)		
DAM LOSSES	(\$351,017.63)	(\$464,757.19)	(\$470,749.05)	(\$517,331.93)	(\$504,069.89)		
BALANCING ENERGY	\$54,921.23	\$224,469.31	\$154,802.41	\$139,814.56	\$120,560.08		
BALANCING LOSSES	\$886.28	\$40,108.55	\$24,628.36	\$22,771.06	(\$9,691.44)		
BALANCING CONGESTION	\$80,751.54	\$473.69	(\$1,279.57)	(\$16,879.66)	(\$31,329.21)		
FAILED IMPORT CHARGE	\$0.00	\$0.00	\$0.00	\$0.00	\$0.00		

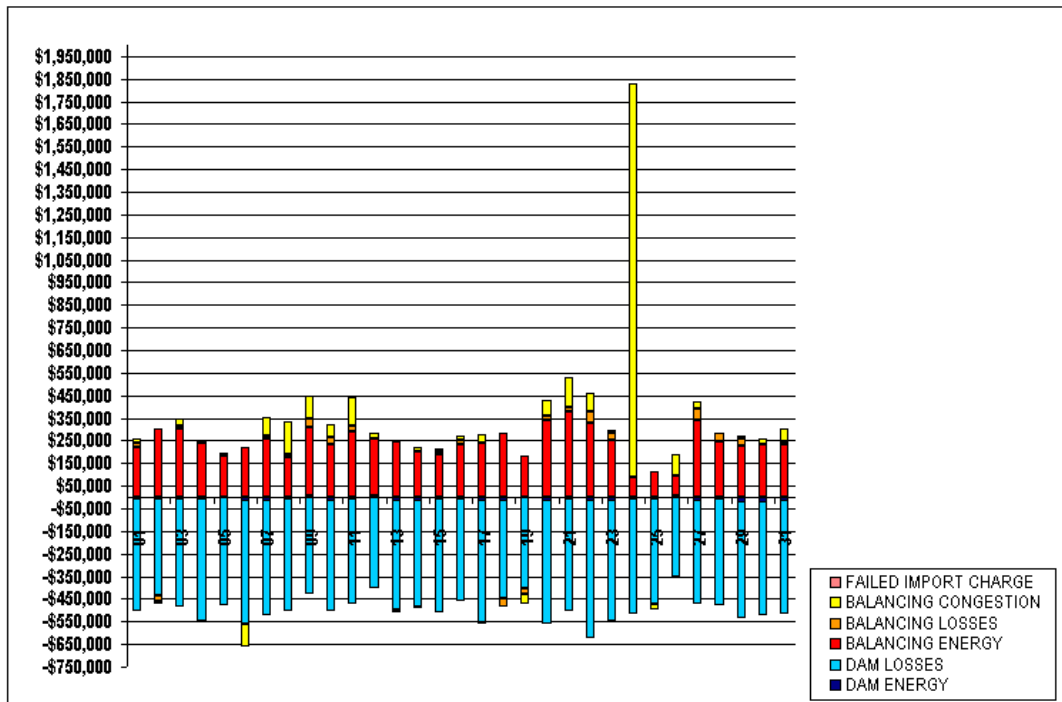


FOR DISCUSSION PURPOSES ONLY

SETTLEMENTS REPORT
ATTACHMENT D: MARCH 2000 CLOSEOUT SETTLEMENT
OCTOBER 21, 2005

CLOSEOUT SETTLEMENT MARKET RESIDUALS ANALYSIS

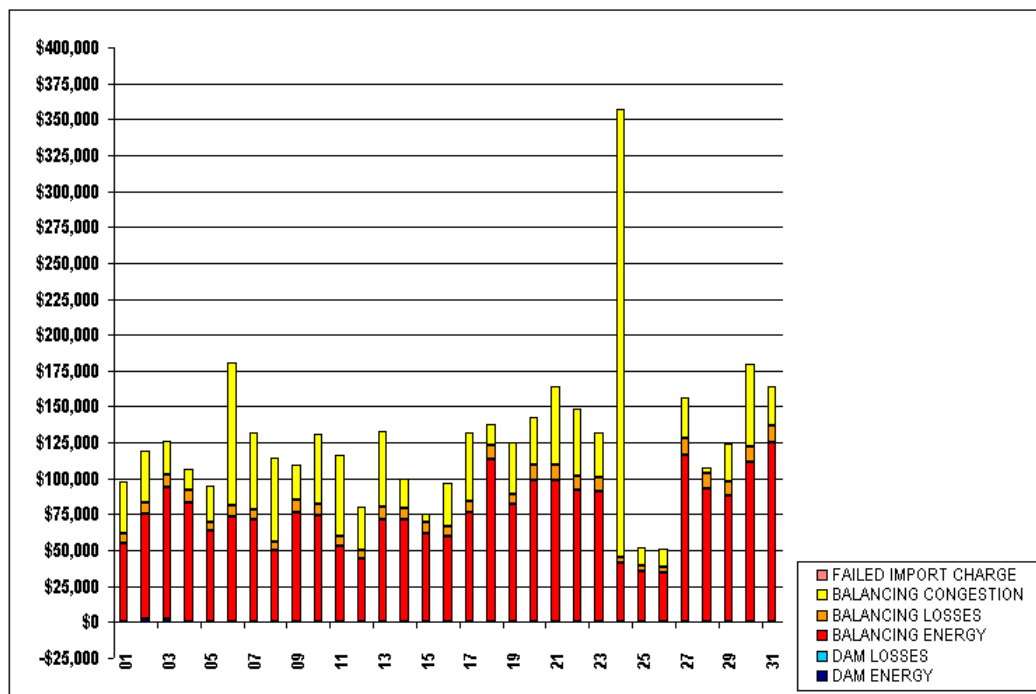
	MONDAY	TUESDAY	WEDNESDAY	THURSDAY	FRIDAY	SATURDAY	SUNDAY
			1	2	3	4	5
DAM ENERGY			(\$6,280.13)	(\$4,227.10)	(\$8,727.38)	(\$4,170.98)	\$3,434.16
DAM LOSSES			(\$500,525.89)	(\$428,711.83)	(\$476,392.21)	(\$545,919.37)	(\$476,219.18)
BALANCING ENERGY			\$223,942.44	\$303,676.30	\$304,490.25	\$238,860.81	\$182,445.80
BALANCING LOSSES			\$15,082.53	(\$25,093.79)	\$12,734.79	\$181.46	\$7,293.60
BALANCING CONGESTION			\$18,412.94	(\$13,035.67)	\$31,605.83	\$4,630.89	(\$1,327.06)
FAILED IMPORT CHARGE			\$0.00	\$0.00	\$0.00	\$0.00	\$0.00
	6	7	8	9	10	11	12
DAM ENERGY	(\$11,213.37)	(\$10,524.46)	(\$3,379.00)	\$7,901.65	(\$9,667.01)	(\$3,555.01)	\$7,437.32
DAM LOSSES	(\$547,921.73)	(\$514,156.52)	(\$498,488.13)	(\$429,795.64)	(\$495,506.13)	(\$471,421.66)	(\$402,666.64)
BALANCING ENERGY	\$222,515.56	\$261,321.78	\$177,397.76	\$301,651.72	\$234,408.06	\$290,528.03	\$249,705.23
BALANCING LOSSES	(\$4,437.63)	\$10,187.77	\$12,326.55	\$40,390.78	\$29,903.83	\$25,150.27	\$2,321.39
BALANCING CONGESTION	(\$100,005.06)	\$83,206.09	\$142,559.26	\$99,758.32	\$57,206.62	\$123,572.74	\$21,884.51
FAILED IMPORT CHARGE	\$0.00	\$0.00	\$0.00	\$0.00	\$0.00	\$0.00	\$0.00
	13	14	15	16	17	18	19
DAM ENERGY	(\$11,580.86)	(\$11,299.53)	(\$3,359.22)	(\$4,796.90)	(\$12,717.67)	(\$9,793.57)	\$942.54
DAM LOSSES	(\$488,754.51)	(\$475,367.86)	(\$503,246.99)	(\$456,065.25)	(\$541,133.24)	(\$437,141.87)	(\$401,549.25)
BALANCING ENERGY	\$246,839.96	\$203,207.02	\$188,960.38	\$232,338.82	\$241,728.02	\$282,389.14	\$184,863.53
BALANCING LOSSES	(\$8,260.36)	(\$1,831.33)	\$16,466.56	\$23,434.33	(\$4,201.65)	(\$35,593.90)	(\$24,804.27)
BALANCING CONGESTION	\$7,067.41	\$16,126.02	\$9,497.44	\$14,236.71	\$37,654.49	\$623.66	(\$48,164.92)
FAILED IMPORT CHARGE	\$0.00	\$0.00	\$0.00	\$0.00	\$0.00	\$0.00	\$0.00
	20	21	22	23	24	25	26
DAM ENERGY	(\$13,024.37)	(\$8,591.81)	(\$12,773.62)	(\$12,637.70)	(\$8,677.93)	(\$6,940.68)	\$4,548.37
DAM LOSSES	(\$550,315.23)	(\$494,812.53)	(\$609,792.68)	(\$535,993.74)	(\$507,910.34)	(\$465,989.98)	(\$351,032.30)
BALANCING ENERGY	\$341,741.94	\$377,919.30	\$331,695.35	\$251,845.48	\$86,438.40	\$114,954.60	\$89,600.20
BALANCING LOSSES	\$20,334.63	\$17,992.79	\$50,427.16	\$33,584.06	\$3,134.68	(\$577.68)	\$4,182.75
BALANCING CONGESTION	\$65,695.82	\$137,158.41	\$76,455.09	\$8,941.80	\$1,741,883.51	(\$22,574.78)	\$93,438.87
FAILED IMPORT CHARGE	\$0.00	\$0.00	\$0.00	\$0.00	\$0.00	\$0.00	\$0.00
	27	28	29	30	31		
DAM ENERGY	(\$9,151.64)	(\$6,958.60)	(\$15,201.55)	(\$16,094.32)	(\$14,262.41)		
DAM LOSSES	(\$464,757.19)	(\$470,749.05)	(\$517,331.93)	(\$504,059.89)	(\$501,314.41)		
BALANCING ENERGY	\$340,663.18	\$248,212.06	\$228,152.51	\$232,180.49	\$232,872.06		
BALANCING LOSSES	\$51,994.43	\$34,719.87	\$32,231.34	\$586.66	\$15,472.38		
BALANCING CONGESTION	\$29,148.15	\$2,621.73	\$9,440.70	\$26,241.61	\$54,869.64		
FAILED IMPORT CHARGE	\$0.00	\$0.00	\$0.00	\$0.00	\$0.00		



SETTLEMENTS REPORT
ATTACHMENT D: MARCH 2000 CLOSEOUT SETTLEMENT
OCTOBER 21, 2005

CLOSEOUT SETTLEMENT MARKET RESIDUALS DELTA ANALYSIS

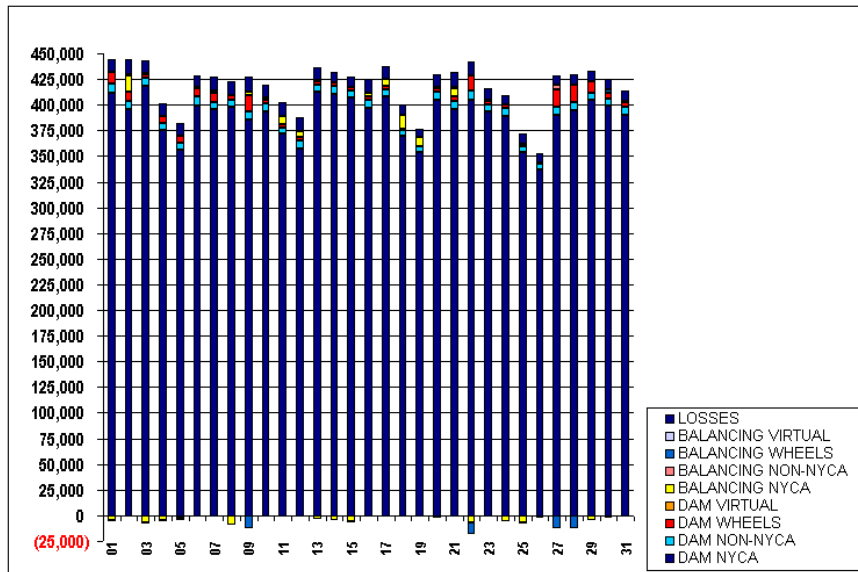
	MONDAY	TUESDAY	WEDNESDAY	THURSDAY	FRIDAY	SATURDAY	SUNDAY
			1	2	3	4	5
DAM ENERGY			\$0.00	\$2,207.35	\$2,065.00	\$0.00	\$0.00
DAM LOSSES			\$0.00	\$61.57	\$75.00	\$0.00	\$0.00
BALANCING ENERGY			\$54,533.25	\$72,671.94	\$92,051.91	\$82,823.14	\$63,331.66
BALANCING LOSSES			\$6,846.08	\$7,821.44	\$8,695.69	\$8,967.89	\$6,481.18
BALANCING CONGESTION			\$36,757.68	\$36,472.25	\$23,414.81	\$15,072.83	\$25,567.75
FAILED IMPORT CHARGE			\$0.00	\$0.00	\$0.00	\$0.00	\$0.00
	6	7	8	9	10	11	12
DAM ENERGY	\$0.00	\$0.00	\$0.00	\$0.00	\$0.00	\$0.00	\$0.00
DAM LOSSES	\$0.00	\$0.00	\$0.00	\$0.00	\$0.00	\$0.00	\$0.00
BALANCING ENERGY	\$73,796.53	\$71,203.80	\$50,360.82	\$76,577.41	\$74,267.60	\$53,412.93	\$44,257.71
BALANCING LOSSES	\$7,655.75	\$6,895.57	\$5,258.66	\$8,248.15	\$7,526.54	\$6,341.56	\$5,465.21
BALANCING CONGESTION	\$98,889.54	\$53,523.22	\$58,895.31	\$24,539.48	\$49,510.15	\$56,241.38	\$30,485.49
FAILED IMPORT CHARGE	\$0.00	\$0.00	\$0.00	\$0.00	\$0.00	\$0.00	\$0.00
	13	14	15	16	17	18	19
DAM ENERGY	\$0.00	\$0.00	\$0.00	\$0.00	\$0.00	\$0.00	\$0.00
DAM LOSSES	\$0.00	\$0.00	\$0.00	(\$0.02)	\$0.00	\$14.40	\$26.24
BALANCING ENERGY	\$71,941.19	\$71,666.22	\$62,077.13	\$60,066.38	\$76,159.56	\$113,325.61	\$81,773.41
BALANCING LOSSES	\$8,632.04	\$7,937.12	\$7,140.88	\$6,428.23	\$7,933.77	\$10,279.57	\$7,403.96
BALANCING CONGESTION	\$52,589.66	\$20,008.66	\$5,840.72	\$30,229.34	\$48,029.17	\$13,863.32	\$36,233.89
FAILED IMPORT CHARGE	\$0.00	\$0.00	\$0.00	\$0.00	\$0.00	\$0.00	\$0.00
	20	21	22	23	24	25	26
DAM ENERGY	\$0.00	\$0.00	\$0.00	\$0.00	\$0.00	(\$0.46)	\$0.23
DAM LOSSES	\$0.00	\$0.00	\$7.47	(\$11.20)	\$0.00	(\$22.00)	(\$14.67)
BALANCING ENERGY	\$98,553.19	\$99,052.75	\$91,988.01	\$91,040.36	\$41,093.86	\$35,812.38	\$34,678.97
BALANCING LOSSES	\$10,839.17	\$10,640.45	\$9,921.58	\$9,671.32	\$4,225.06	\$3,665.75	\$3,296.47
BALANCING CONGESTION	\$33,422.50	\$54,387.20	\$46,691.35	\$30,910.54	\$311,604.31	\$12,524.16	\$12,687.33
FAILED IMPORT CHARGE	\$0.00	\$0.00	\$0.00	\$0.00	\$0.00	\$0.00	\$0.00
	27	28	29	30	31		
DAM ENERGY	\$0.00	\$0.00	\$0.00	\$0.00	\$0.00		
DAM LOSSES	\$0.00	\$0.00	\$0.00	\$0.00	\$0.00		
BALANCING ENERGY	\$116,193.87	\$93,409.65	\$88,337.95	\$111,620.41	\$124,966.97		
BALANCING LOSSES	\$11,885.88	\$10,091.51	\$9,460.28	\$10,278.10	\$11,972.56		
BALANCING CONGESTION	\$28,674.46	\$3,901.30	\$26,320.36	\$57,570.82	\$27,086.93		
FAILED IMPORT CHARGE	\$0.00	\$0.00	\$0.00	\$0.00	\$0.00		



SETTLEMENTS REPORT
ATTACHMENT D: MARCH 2000 CLOSEOUT SETTLEMENT
OCTOBER 21, 2005

24-MONTH SETTLEMENT ADJUSTMENT MARKET WITHDRAWALS ANALYSIS

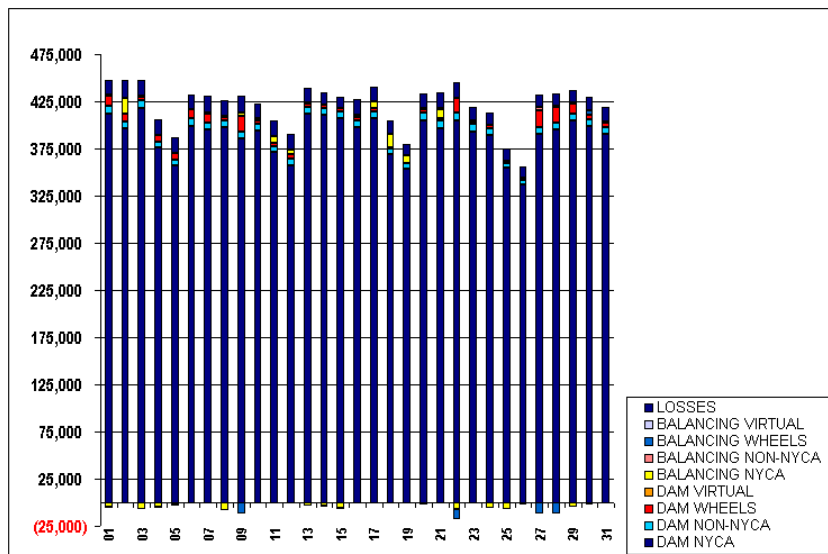
	MONDAY	TUESDAY	WEDNESDAY	THURSDAY	FRIDAY	SATURDAY	SUNDAY
			1	2	3	4	5
DAM NYCA			412,058	396,122	418,237	375,626	356,664
DAM NON-NYCA			8,016	7,921	8,450	6,829	6,710
DAM WHEELS			11,438	8,238	3,438	6,782	6,782
DAM VIRTUAL			0	0	0	0	0
BALANCING NYCA			(4,929)	16,384	(6,975)	(4,623)	(2,835)
BALANCING NON-NYCA			(1,103)	(229)	(688)	(900)	(1,300)
BALANCING WHEELS			400	425	250	0	0
BALANCING VIRTUAL			0	0	0	0	0
LOSSES			12,789	14,692	12,991	12,418	12,513
	6	7	8	9	10	11	12
DAM NYCA	399,156	395,468	397,704	385,232	393,912	371,607	356,761
DAM NON-NYCA	8,473	7,297	7,007	8,057	7,094	5,627	8,109
DAM WHEELS	8,878	8,878	4,078	16,078	4,082	3,870	3,892
DAM VIRTUAL	0	0	0	0	0	0	0
BALANCING NYCA	296	1,699	(8,727)	3,325	2,202	7,431	4,919
BALANCING NON-NYCA	(166)	(986)	151	(350)	(143)	(141)	90
BALANCING WHEELS	100	200	400	(11,814)	(17)	(45)	(106)
BALANCING VIRTUAL	0	0	0	0	0	0	0
LOSSES	11,516	13,670	13,614	14,192	11,874	13,927	14,190
	13	14	15	16	17	18	19
DAM NYCA	412,250	410,945	406,944	397,088	407,639	369,535	354,105
DAM NON-NYCA	7,324	7,332	7,210	7,262	7,190	5,628	5,509
DAM WHEELS	3,438	3,438	3,510	3,510	3,510	1,622	172
DAM VIRTUAL	0	0	0	0	0	0	0
BALANCING NYCA	(2,067)	(4,085)	(5,587)	3,199	6,979	13,541	8,293
BALANCING NON-NYCA	466	(1,025)	(1,395)	156	(612)	(347)	(1,162)
BALANCING WHEELS	45	122	0	(14)	0	(200)	0
BALANCING VIRTUAL	0	0	0	0	0	0	0
LOSSES	12,717	9,631	9,448	13,601	12,203	10,433	8,256
	20	21	22	23	24	25	26
DAM NYCA	404,645	396,176	405,065	393,140	389,399	354,405	336,543
DAM NON-NYCA	7,999	7,996	8,209	7,461	7,197	5,628	5,524
DAM WHEELS	3,510	3,510	15,438	3,438	3,438	1,550	1,550
DAM VIRTUAL	0	0	0	0	0	0	0
BALANCING NYCA	(2,181)	8,954	(6,831)	162	(5,545)	(7,349)	(2,017)
BALANCING NON-NYCA	432	497	256	(178)	374	(373)	(267)
BALANCING WHEELS	1,125	300	(11,250)	650	50	25	200
BALANCING VIRTUAL	0	0	0	0	0	0	0
LOSSES	11,862	13,987	13,234	10,954	9,055	10,785	8,991
	27	28	29	30	31		
DAM NYCA	390,312	394,898	404,549	399,175	390,391		
DAM NON-NYCA	7,853	7,128	7,391	7,090	7,027		
DAM WHEELS	17,038	17,038	10,638	5,038	5,038		
DAM VIRTUAL	0	0	0	0	0		
BALANCING NYCA	(320)	152	(4,185)	(1,731)	(657)		
BALANCING NON-NYCA	3,716	498	(84)	(1,100)	(253)		
BALANCING WHEELS	(11,955)	(12,000)	100	3,600	900		
BALANCING VIRTUAL	0	0	0	0	0		
LOSSES	9,813	9,838	10,266	9,768	9,919		



SETTLEMENTS REPORT
ATTACHMENT D: MARCH 2000 CLOSEOUT SETTLEMENT
OCTOBER 21, 2005

CLOSEOUT SETTLEMENT MARKET WITHDRAWALS ANALYSIS

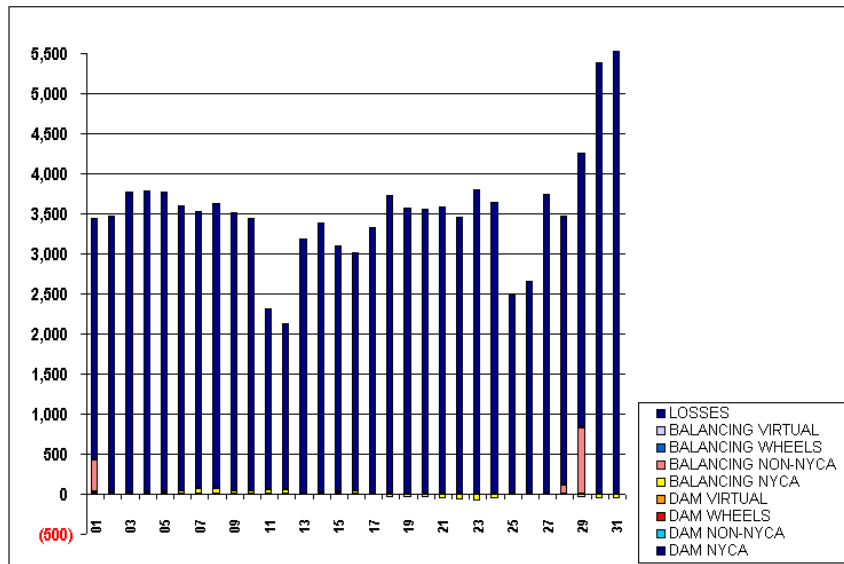
	MONDAY	TUESDAY	WEDNESDAY	THURSDAY	FRIDAY	SATURDAY	SUNDAY
			1	2	3	4	5
DAM NYCA			412,058	396,122	418,237	375,626	356,664
DAM NON-NYCA			8,016	7,921	8,450	6,829	6,710
DAM WHEELS			11,438	8,238	3,438	6,782	6,782
DAM VIRTUAL			0	0	0	0	0
BALANCING NYCA			(4,907)	16,393	(6,956)	(4,508)	(2,307)
BALANCING NON-NYCA			(703)	(229)	(688)	(900)	(1,200)
BALANCING WHEELS			400	425	250	0	0
BALANCING VIRTUAL			0	0	0	0	0
LOSSES			15,810	18,148	16,749	16,191	16,260
	6	7	8	9	10	11	12
DAM NYCA	399,156	395,468	397,704	385,232	393,913	371,607	356,761
DAM NON-NYCA	8,473	7,297	7,007	7,007	7,094	5,627	8,109
DAM WHEELS	8,878	8,878	4,078	16,078	4,082	3,870	3,892
DAM VIRTUAL	0	0	0	0	0	0	0
BALANCING NYCA	345	1,771	(8,657)	3,370	2,243	7,483	4,971
BALANCING NON-NYCA	(166)	(986)	151	(350)	(143)	(141)	90
BALANCING WHEELS	100	200	400	(11,814)	(17)	(45)	(106)
BALANCING VIRTUAL	0	0	0	0	0	0	0
LOSSES	15,070	17,126	17,167	17,660	15,283	16,192	16,267
	13	14	15	16	17	18	19
DAM NYCA	412,250	410,945	406,944	397,088	407,639	369,535	354,105
DAM NON-NYCA	7,324	7,332	7,210	7,262	7,190	5,628	5,509
DAM WHEELS	3,438	3,438	3,510	3,510	3,510	1,622	172
DAM VIRTUAL	0	0	0	0	0	0	0
BALANCING NYCA	(3,066)	(4,077)	(5,561)	3,237	6,983	13,496	8,255
BALANCING NON-NYCA	466	(1,025)	(1,395)	156	(612)	(347)	(1,162)
BALANCING WHEELS	45	122	0	(14)	0	(200)	0
BALANCING VIRTUAL	0	0	0	0	0	0	0
LOSSES	15,896	13,007	12,517	16,583	15,533	14,155	11,922
	20	21	22	23	24	25	26
DAM NYCA	404,645	396,176	405,065	393,140	389,399	354,405	336,543
DAM NON-NYCA	7,999	7,996	8,209	7,461	7,197	5,628	5,524
DAM WHEELS	3,510	3,510	15,438	3,438	3,438	1,550	1,550
DAM VIRTUAL	0	0	0	0	0	0	0
BALANCING NYCA	(2,229)	3,890	(6,904)	78	(5,603)	(7,340)	(1,998)
BALANCING NON-NYCA	432	497	256	(178)	374	(373)	(267)
BALANCING WHEELS	1,125	300	(11,250)	650	50	25	200
BALANCING VIRTUAL	0	0	0	0	0	0	0
LOSSES	15,415	17,579	16,697	14,760	12,695	13,262	11,627
	27	28	29	30	31		
DAM NYCA	390,212	394,898	404,549	399,175	390,391		
DAM NON-NYCA	7,853	7,128	7,391	7,090	7,027		
DAM WHEELS	17,038	17,038	10,638	5,038	5,038		
DAM VIRTUAL	0	0	0	0	0		
BALANCING NYCA	(339)	151	(4,227)	(1,839)	(719)		
BALANCING NON-NYCA	3,716	616	742	(1,100)	(253)		
BALANCING WHEELS	(11,955)	(12,000)	100	3,600	900		
BALANCING VIRTUAL	0	0	0	0	0		
LOSSES	13,558	13,188	13,692	15,159	15,461		



SETTLEMENTS REPORT
 ATTACHMENT D: MARCH 2000 CLOSEOUT SETTLEMENT
 OCTOBER 21, 2005

CLOSEOUT SETTLEMENT MARKET WITHDRAWALS DELTA ANALYSIS

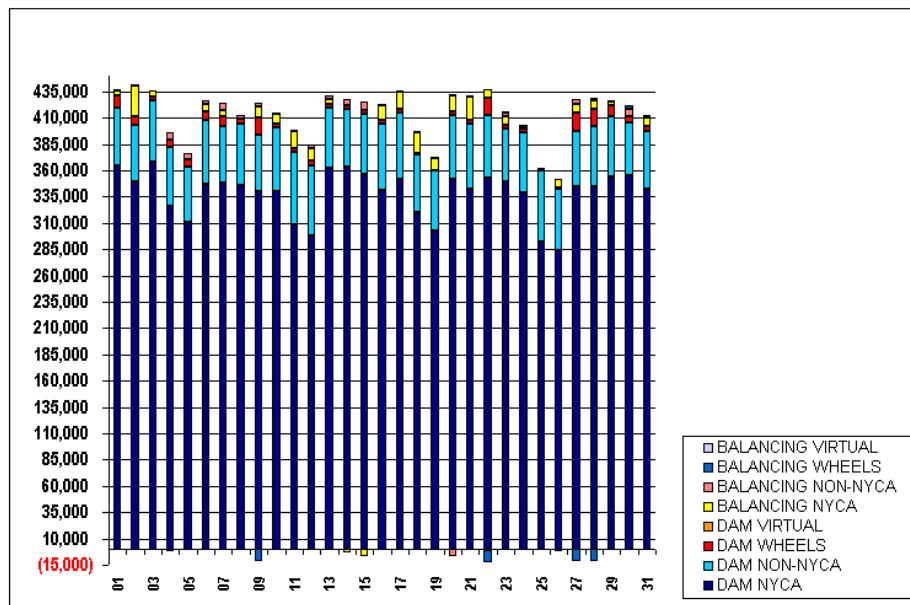
	MONDAY	TUESDAY	WEDNESDAY	THURSDAY	FRIDAY	SATURDAY	SUNDAY
			1	2	3	4	5
DAM NYCA			0	0	0	0	0
DAM NON-NYCA			0	0	0	0	0
DAM WHEELS			0	0	0	0	0
DAM VIRTUAL			0	0	0	0	0
BALANCING NYCA			22	10	13	16	29
BALANCING NON-NYCA			400	0	0	0	0
BALANCING WHEELS			0	0	0	0	0
BALANCING VIRTUAL			0	0	0	0	0
LOSSES			3,021	3,456	3,757	3,773	3,747
	6	7	8	9	10	11	12
DAM NYCA	0	0	0	0	0	0	0
DAM NON-NYCA	0	0	0	0	0	0	0
DAM WHEELS	0	0	0	0	0	0	0
DAM VIRTUAL	0	0	0	0	0	0	0
BALANCING NYCA	49	71	70	45	41	52	52
BALANCING NON-NYCA	0	0	0	0	0	0	0
BALANCING WHEELS	0	0	0	0	0	0	0
BALANCING VIRTUAL	0	0	0	0	0	0	0
LOSSES	3,553	3,456	3,552	3,468	3,409	2,265	2,077
	13	14	15	16	17	18	19
DAM NYCA	0	0	0	0	0	0	0
DAM NON-NYCA	0	0	0	0	0	0	0
DAM WHEELS	0	0	0	0	0	0	0
DAM VIRTUAL	0	0	0	0	0	0	0
BALANCING NYCA	1	3	26	38	3	(46)	(39)
BALANCING NON-NYCA	0	0	0	0	0	0	0
BALANCING WHEELS	0	0	0	0	0	0	0
BALANCING VIRTUAL	0	0	0	0	0	0	0
LOSSES	3,179	3,376	3,069	2,982	3,330	3,723	3,566
	20	21	22	23	24	25	26
DAM NYCA	0	0	0	0	0	0	0
DAM NON-NYCA	0	0	0	0	0	0	0
DAM WHEELS	0	0	0	0	0	0	0
DAM VIRTUAL	0	0	0	0	0	0	0
BALANCING NYCA	(43)	(64)	(73)	(84)	(53)	9	19
BALANCING NON-NYCA	0	0	0	0	0	0	0
BALANCING WHEELS	0	0	0	0	0	0	0
BALANCING VIRTUAL	0	0	0	0	0	0	0
LOSSES	3,553	3,592	3,463	3,806	3,641	2,477	2,636
	27	28	29	30	31		
DAM NYCA	0	0	0	0	0		
DAM NON-NYCA	0	0	0	0	0		
DAM WHEELS	0	0	0	0	0		
DAM VIRTUAL	0	0	0	0	0		
BALANCING NYCA	(19)	(1)	(42)	(53)	(62)		
BALANCING NON-NYCA	0	118	825	0	0		
BALANCING WHEELS	0	0	0	0	0		
BALANCING VIRTUAL	0	0	0	0	0		
LOSSES	3,745	3,350	3,426	5,390	5,542		



SETTLEMENTS REPORT
ATTACHMENT D: MARCH 2000 CLOSEOUT SETTLEMENT
OCTOBER 21, 2005

24-MONTH SETTLEMENT ADJUSTMENT MARKET SUPPLY ANALYSIS

	MONDAY	TUESDAY	WEDNESDAY	THURSDAY	FRIDAY	SATURDAY	SUNDAY
				1	2	3	4
DAM NYCA				364,634	350,027	368,199	326,648
DAM NON-NYCA				55,260	53,758	58,106	55,741
DAM WHEELS				11,438	8,238	3,438	6,782
DAM VIRTUAL				0	0	0	0
BALANCING NYCA				4,445	28,056	6,042	(2,174)
BALANCING NON-NYCA				698	1,067	(1,267)	6,713
BALANCING WHEELS				400	425	250	0
BALANCING VIRTUAL				0	0	0	0
	5	6	7	8	9	10	11
DAM NYCA	310,443	347,613	348,361	345,707	340,211	340,267	309,035
DAM NON-NYCA	53,125	59,769	54,096	58,947	53,441	60,438	68,087
DAM WHEELS	6,782	8,878	8,878	4,078	16,078	4,082	3,870
DAM VIRTUAL	0	0	0	0	0	0	0
BALANCING NYCA	(157)	6,516	6,149	(342)	11,419	8,597	16,267
BALANCING NON-NYCA	5,568	3,506	7,042	3,629	3,049	1,432	1,743
BALANCING WHEELS	0	100	200	400	(1,814)	(17)	(45)
BALANCING VIRTUAL	0	0	0	0	0	0	0
	12	13	14	15	16	17	18
DAM NYCA	298,076	362,661	363,545	357,039	340,832	351,959	320,448
DAM NON-NYCA	67,109	56,623	54,427	56,892	63,390	62,538	54,429
DAM WHEELS	3,892	3,438	3,438	3,510	3,510	3,510	1,622
DAM VIRTUAL	0	0	0	0	0	0	0
BALANCING NYCA	12,084	4,701	(2,307)	(7,136)	14,415	17,203	19,553
BALANCING NON-NYCA	3,948	3,850	6,198	7,719	1,387	260	1,013
BALANCING WHEELS	(106)	45	122	0	(14)	0	(200)
BALANCING VIRTUAL	0	0	0	0	0	0	0
	19	20	21	22	23	24	25
DAM NYCA	302,619	351,335	343,037	353,482	348,952	338,617	292,601
DAM NON-NYCA	57,081	61,004	60,936	59,481	51,305	57,735	67,242
DAM WHEELS	172	3,510	3,510	15,438	3,438	3,438	1,550
DAM VIRTUAL	0	0	0	0	0	0	0
BALANCING NYCA	11,695	15,467	22,871	8,521	7,501	1,224	864
BALANCING NON-NYCA	910	(6,250)	766	(1,551)	3,782	2,453	673
BALANCING WHEELS	0	1,125	300	(11,250)	650	50	25
BALANCING VIRTUAL	0	0	0	0	0	0	0
	26	27	28	29	30		
DAM NYCA	284,111	344,449	344,434	354,728	355,333		
DAM NON-NYCA	58,167	53,454	57,404	56,788	50,528		
DAM WHEELS	1,550	17,038	17,038	10,638	5,038		
DAM VIRTUAL	0	0	0	0	0		
BALANCING NYCA	8,342	7,866	7,943	3,630	454		
BALANCING NON-NYCA	(2,146)	5,305	2,383	1,199	6,538		
BALANCING WHEELS	200	(11,955)	(12,000)	100	3,600		
BALANCING VIRTUAL	0	0	0	0	0		

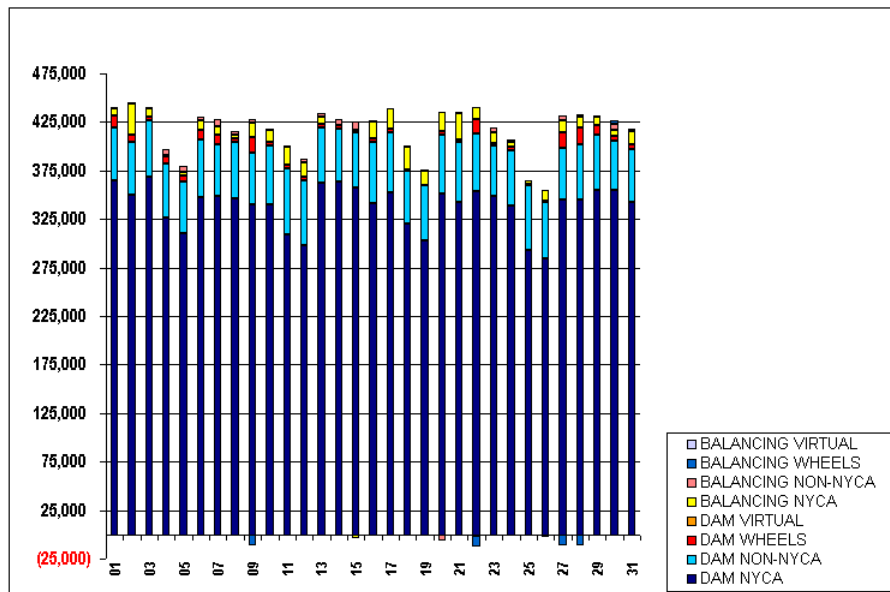


FOR DISCUSSION PURPOSES ONLY

SETTLEMENTS REPORT
ATTACHMENT D: MARCH 2000 CLOSEOUT SETTLEMENT
OCTOBER 21, 2005

CLOSEOUT SETTLEMENT MARKET SUPPLY ANALYSIS

	MONDAY	TUESDAY	WEDNESDAY	THURSDAY	FRIDAY	SATURDAY	SUNDAY
			1	2	3	4	5
DAM NYCA			364,634	350,158	368,324	326,648	310,443
DAM NON-NYCA			55,260	53,758	58,106	55,741	53,125
DAM WHEELS			11,438	8,238	3,438	6,782	6,782
DAM VIRTUAL			0	0	0	0	0
BALANCING NYCA			7,888	31,391	9,692	1,614	3,619
BALANCING NON-NYCA			698	1,067	(1,267)	6,713	5,568
BALANCING WHEELS			400	425	250	0	0
BALANCING VIRTUAL			0	0	0	0	0
	6	7	8	9	10	11	12
DAM NYCA	347,613	348,361	345,707	340,211	340,267	309,035	298,076
DAM NON-NYCA	59,769	54,096	58,947	53,441	60,438	68,087	67,109
DAM WHEELS	8,878	8,878	4,078	16,078	4,082	3,870	3,892
DAM VIRTUAL	0	0	0	0	0	0	0
BALANCING NYCA	10,118	9,677	3,281	14,932	12,047	18,584	14,214
BALANCING NON-NYCA	3,506	7,042	3,629	3,049	1,432	1,432	3,948
BALANCING WHEELS	100	200	400	(11,814)	(17)	(45)	(106)
BALANCING VIRTUAL	0	0	0	0	0	0	0
	13	14	15	16	17	18	19
DAM NYCA	362,661	363,545	357,039	340,832	351,959	320,448	302,619
DAM NON-NYCA	56,823	54,427	56,892	63,390	62,538	54,429	57,081
DAM WHEELS	3,438	3,438	3,510	3,510	3,510	1,622	172
DAM VIRTUAL	0	0	0	0	0	0	0
BALANCING NYCA	7,881	577	(4,041)	17,435	20,536	23,230	15,222
BALANCING NON-NYCA	3,850	6,198	7,719	1,387	260	1,013	910
BALANCING WHEELS	45	122	0	(14)	0	(200)	0
BALANCING VIRTUAL	0	0	0	0	0	0	0
	20	21	22	23	24	25	26
DAM NYCA	351,335	343,037	353,482	348,952	338,617	292,601	284,111
DAM NON-NYCA	61,004	60,936	59,481	51,305	57,735	67,242	58,167
DAM WHEELS	3,510	3,510	15,438	3,438	3,438	1,550	1,550
DAM VIRTUAL	0	0	0	0	0	0	0
BALANCING NYCA	18,972	26,399	11,911	11,223	4,807	3,350	10,997
BALANCING NON-NYCA	(6,250)	766	(1,551)	3,782	2,453	673	(2,146)
BALANCING WHEELS	1,125	300	(11,250)	660	50	25	200
BALANCING VIRTUAL	0	0	0	0	0	0	0
	27	28	29	30	31		
DAM NYCA	344,449	344,434	354,728	355,333	342,751		
DAM NON-NYCA	53,454	57,404	56,788	50,528	54,272		
DAM WHEELS	17,038	17,038	10,638	5,038	5,038		
DAM VIRTUAL	0	0	0	0	0		
BALANCING NYCA	11,592	11,410	7,841	5,785	13,143		
BALANCING NON-NYCA	5,305	2,383	1,199	6,538	1,736		
BALANCING WHEELS	(11,955)	(12,000)	100	3,600	900		
BALANCING VIRTUAL	0	0	0	0	0		



SETTLEMENTS REPORT
ATTACHMENT D: MARCH 2000 CLOSEOUT SETTLEMENT
OCTOBER 21, 2005

CLOSEOUT SETTLEMENT MARKET SUPPLY DELTA ANALYSIS

	MONDAY	TUESDAY	WEDNESDAY	THURSDAY	FRIDAY	SATURDAY	SUNDAY
			1	2	3	4	5
DAM NYCA			0	131	125	0	0
DAM NON-NYCA			0	0	0	0	0
DAM WHEELS			0	0	0	0	0
DAM VIRTUAL			0	0	0	0	0
BALANCING NYCA			3,443	3,335	3,651	3,789	3,776
BALANCING NON-NYCA			0	0	0	0	0
BALANCING WHEELS			0	0	0	0	0
BALANCING VIRTUAL			0	0	0	0	0
	6	7	8	9	10	11	12
DAM NYCA	0	0	0	0	0	0	0
DAM NON-NYCA	0	0	0	0	0	0	0
DAM WHEELS	0	0	0	0	0	0	0
DAM VIRTUAL	0	0	0	0	0	0	0
BALANCING NYCA	3,602	3,527	3,622	3,513	3,450	2,317	2,130
BALANCING NON-NYCA	0	0	0	0	0	0	0
BALANCING WHEELS	0	0	0	0	0	0	0
BALANCING VIRTUAL	0	0	0	0	0	0	0
	13	14	15	16	17	18	19
DAM NYCA	0	0	0	0	0	0	0
DAM NON-NYCA	0	0	0	0	0	0	0
DAM WHEELS	0	0	0	0	0	0	0
DAM VIRTUAL	0	0	0	0	0	0	0
BALANCING NYCA	3,180	3,384	3,095	3,019	3,333	3,677	3,528
BALANCING NON-NYCA	0	0	0	0	0	0	0
BALANCING WHEELS	0	0	0	0	0	0	0
BALANCING VIRTUAL	0	0	0	0	0	0	0
	20	21	22	23	24	25	26
DAM NYCA	0	0	0	0	0	0	0
DAM NON-NYCA	0	0	0	0	0	0	0
DAM WHEELS	0	0	0	0	0	0	0
DAM VIRTUAL	0	0	0	0	0	0	0
BALANCING NYCA	3,505	3,528	3,390	3,722	3,583	2,486	2,655
BALANCING NON-NYCA	0	0	0	0	0	0	0
BALANCING WHEELS	0	0	0	0	0	0	0
BALANCING VIRTUAL	0	0	0	0	0	0	0
	27	28	29	30	31		
DAM NYCA	0	0	0	0	0		
DAM NON-NYCA	0	0	0	0	0		
DAM WHEELS	0	0	0	0	0		
DAM VIRTUAL	0	0	0	0	0		
BALANCING NYCA	3,725	3,467	4,210	5,332	5,480		
BALANCING NON-NYCA	0	0	0	0	0		
BALANCING WHEELS	0	0	0	0	0		
BALANCING VIRTUAL	0	0	0	0	0		

