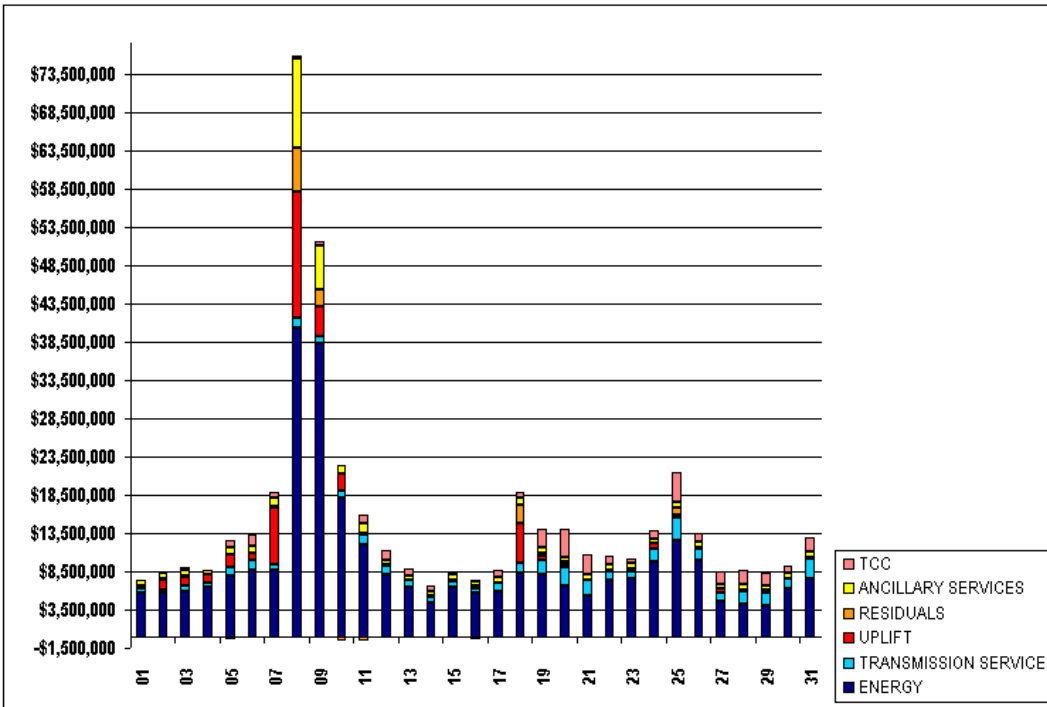


SETTLEMENTS REPORT
 ATTACHMENT D: MAY 2000 CLOSEOUT SETTLEMENT
 OCTOBER 21, 2005

REBILL SETTLEMENT MARKET COSTS

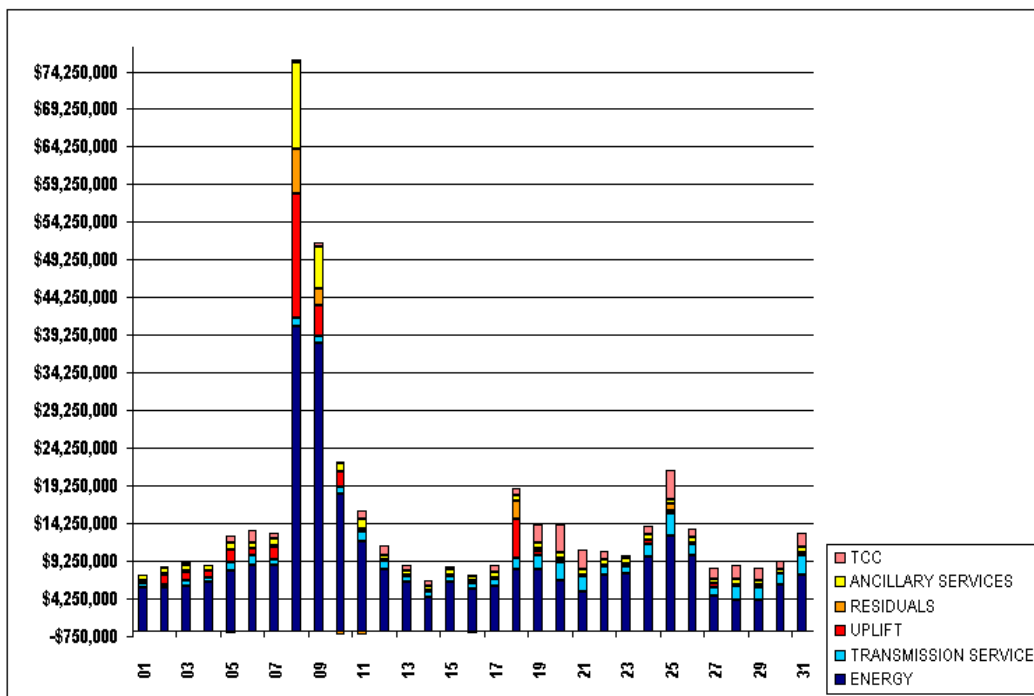
	MONDAY	TUESDAY	WEDNESDAY	THURSDAY	FRIDAY	SATURDAY	SUNDAY
	1	2	3	4	5	6	7
ENERGY	\$5,758,495.16	\$5,667,511.10	\$5,976,140.33	\$6,431,014.51	\$8,013,225.48	\$8,667,007.05	\$8,639,168.96
TRANSMISSION SERVICE	\$531,318.75	\$505,865.67	\$624,271.16	\$527,300.74	\$1,031,423.88	\$1,267,007.12	\$826,105.88
UPLIFT	\$379,679.14	\$1,235,512.31	\$1,199,942.66	\$1,073,317.41	\$1,628,132.80	\$920,241.00	\$7,387,862.77
RESIDUALS	(\$121,105.55)	\$152,378.17	\$133,368.84	(\$200,883.54)	(\$298,709.99)	(\$35,959.48)	\$189,181.88
ANCILLARY SERVICES	\$686,330.61	\$699,218.67	\$714,953.32	\$620,954.90	\$986,639.92	\$881,753.66	\$1,014,119.00
TCC	\$62,853.88	\$200,594.85	\$343,822.66	\$33,180.00	\$993,708.81	\$1,562,293.75	\$752,599.79
	8	9	10	11	12	13	14
ENERGY	\$40,346,015.21	\$38,189,116.40	\$18,158,310.22	\$11,927,175.42	\$8,186,528.52	\$6,507,339.40	\$4,504,268.56
TRANSMISSION SERVICE	\$1,258,669.19	\$999,791.67	\$910,366.50	\$1,287,986.21	\$1,123,285.69	\$803,361.50	\$639,060.00
UPLIFT	\$16,507,295.11	\$3,920,413.30	\$2,138,619.27	\$338,059.98	\$81,805.06	\$26,577.35	\$227,382.20
RESIDUALS	\$5,761,010.06	\$2,242,767.63	(\$576,739.31)	(\$540,460.58)	(\$286,363.98)	(\$148,861.09)	(\$157,640.72)
ANCILLARY SERVICES	\$11,592,350.51	\$5,636,329.36	\$1,125,416.29	\$1,211,117.86	\$659,870.73	\$617,819.91	\$617,404.65
TCC	\$339,626.49	\$592,719.37	\$12,757.97	\$1,191,122.93	\$1,176,873.47	\$822,385.49	\$596,323.21
	15	16	17	18	19	20	21
ENERGY	\$6,421,974.70	\$5,633,770.45	\$5,972,030.97	\$8,231,921.89	\$8,190,055.78	\$6,659,222.13	\$5,262,083.54
TRANSMISSION SERVICE	\$842,931.15	\$690,168.36	\$972,811.32	\$1,384,487.17	\$1,810,963.49	\$2,408,475.30	\$2,052,023.82
UPLIFT	\$93,274.83	\$250,541.50	\$119,483.34	\$5,252,771.51	\$531,508.03	\$256,676.21	\$130,075.03
RESIDUALS	(\$248,928.36)	(\$385,834.92)	(\$32,230.56)	\$2,369,272.25	\$427,429.13	\$380,747.23	(\$48,778.92)
ANCILLARY SERVICES	\$705,559.11	\$672,293.53	\$692,577.10	\$811,498.54	\$715,001.74	\$641,936.36	\$622,813.21
TCC	\$439,680.84	\$225,323.46	\$982,733.22	\$813,956.88	\$2,341,294.84	\$3,785,313.34	\$2,722,638.89
	22	23	24	25	26	27	28
ENERGY	\$7,376,728.05	\$7,545,785.15	\$9,727,856.84	\$12,647,811.34	\$10,028,969.40	\$4,560,642.47	\$4,145,304.70
TRANSMISSION SERVICE	\$1,193,734.03	\$948,033.93	\$1,711,495.28	\$2,874,307.67	\$1,412,360.51	\$1,231,653.68	\$1,736,455.97
UPLIFT	\$123,814.22	\$424,769.83	\$663,974.87	\$438,314.78	\$196,961.07	\$432,403.31	\$274,959.51
RESIDUALS	(\$107,730.70)	(\$173,734.87)	(\$128,387.13)	\$841,832.49	(\$190,907.38)	(\$69,548.71)	(\$117,866.00)
ANCILLARY SERVICES	\$679,708.49	\$684,561.94	\$713,241.21	\$687,581.40	\$691,083.11	\$617,527.10	\$642,575.12
TCC	\$1,177,658.89	\$490,341.14	\$1,057,686.91	\$3,893,101.11	\$1,124,363.96	\$1,574,980.22	\$1,863,082.01
	29	30	31				
ENERGY	\$4,043,187.84	\$6,179,929.41	\$7,486,009.26				
TRANSMISSION SERVICE	\$1,639,740.26	\$1,330,353.67	\$2,602,396.01				
UPLIFT	\$352,809.37	\$120,165.13	\$329,958.88				
RESIDUALS	(\$279,479.05)	(\$150,673.41)	(\$213,960.43)				
ANCILLARY SERVICES	\$601,267.23	\$612,352.85	\$683,785.46				
TCC	\$1,649,231.50	\$975,914.49	\$1,867,302.24				



SETTLEMENTS REPORT
ATTACHMENT D: MAY 2000 CLOSEOUT SETTLEMENT
OCTOBER 21, 2005

CLOSEOUT SETTLEMENT MARKET COSTS

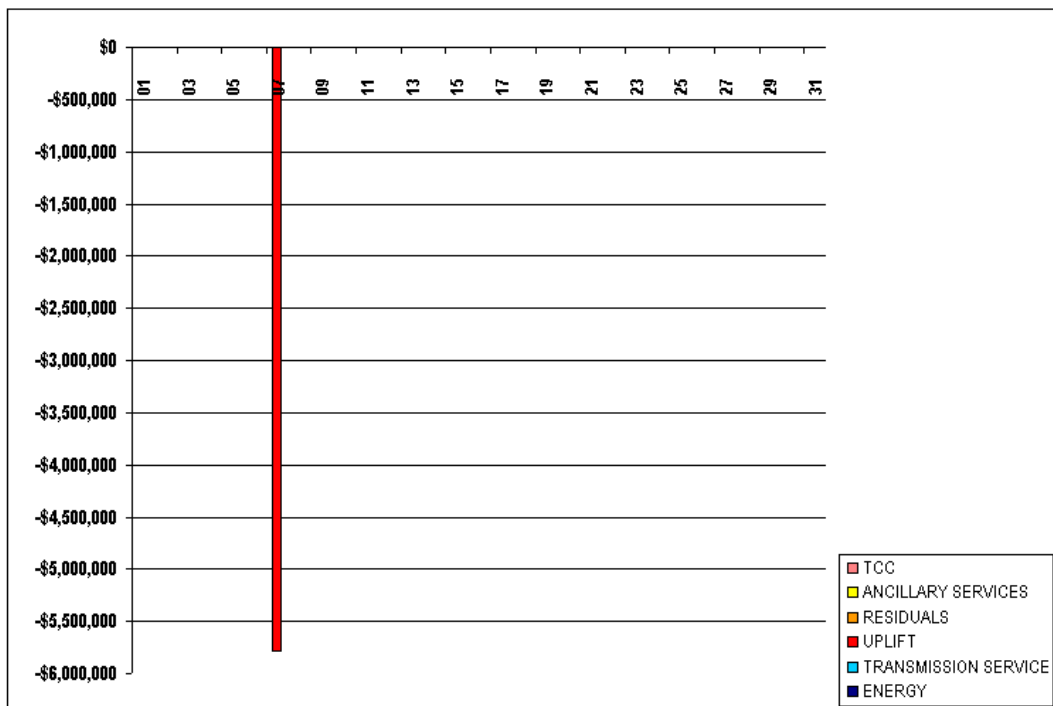
	MONDAY	TUESDAY	WEDNESDAY	THURSDAY	FRIDAY	SATURDAY	SUNDAY
	1	2	3	4	5	6	7
ENERGY	\$5,758,495.16	\$5,667,511.10	\$5,976,140.33	\$6,431,014.51	\$8,013,225.48	\$8,667,007.05	\$8,639,168.96
TRANSMISSION SERVICE	\$531,318.75	\$505,865.67	\$624,271.16	\$527,300.74	\$1,031,423.88	\$1,267,007.12	\$826,105.88
UPLIFT	\$379,679.14	\$1,235,512.31	\$1,199,942.66	\$1,073,317.41	\$1,628,132.80	\$920,241.00	\$1,537,717.66
RESIDUALS	(\$121,105.55)	\$152,378.17	\$133,368.84	(\$200,883.54)	(\$298,709.99)	(\$35,959.48)	\$189,181.88
ANCILLARY SERVICES	\$686,330.61	\$699,218.67	\$714,953.32	\$620,954.90	\$986,639.92	\$881,753.66	\$1,014,119.00
TCC	\$62,853.88	\$200,161.84	\$342,881.82	\$33,180.00	\$990,406.84	\$1,567,905.17	\$750,593.84
	8	9	10	11	12	13	14
ENERGY	\$40,346,015.21	\$38,189,116.40	\$18,158,310.22	\$11,927,175.42	\$8,186,528.52	\$6,507,339.40	\$4,504,268.56
TRANSMISSION SERVICE	\$1,258,669.19	\$999,791.67	\$910,366.50	\$1,287,986.21	\$1,123,285.69	\$803,361.50	\$639,060.00
UPLIFT	\$16,507,295.11	\$3,920,413.30	\$2,138,619.27	\$338,059.98	\$81,805.06	\$26,577.35	\$227,382.20
RESIDUALS	\$5,761,010.06	\$2,242,767.63	(\$576,739.31)	(\$540,460.58)	(\$286,363.98)	(\$148,862.15)	(\$157,640.72)
ANCILLARY SERVICES	\$11,592,350.51	\$5,636,329.36	\$1,125,416.29	\$1,211,117.86	\$659,870.73	\$617,819.91	\$617,404.65
TCC	\$339,585.21	\$592,689.70	\$12,747.65	\$1,191,122.93	\$1,176,121.40	\$819,917.72	\$594,726.62
	15	16	17	18	19	20	21
ENERGY	\$6,421,974.70	\$5,633,770.45	\$5,972,030.97	\$8,231,921.89	\$8,190,055.78	\$6,659,222.13	\$5,262,083.54
TRANSMISSION SERVICE	\$842,931.15	\$690,168.36	\$972,811.32	\$1,384,487.17	\$1,810,963.49	\$2,408,475.30	\$2,052,023.82
UPLIFT	\$93,274.83	\$250,541.50	\$119,483.34	\$5,252,771.51	\$531,508.03	\$256,676.21	\$130,075.03
RESIDUALS	(\$248,928.36)	(\$385,834.92)	(\$32,230.56)	\$2,369,272.25	\$427,429.13	\$380,747.23	(\$48,778.92)
ANCILLARY SERVICES	\$705,559.11	\$672,293.53	\$692,577.10	\$811,498.54	\$715,001.74	\$641,936.36	\$622,813.21
TCC	\$438,178.42	\$224,642.77	\$979,436.84	\$813,166.97	\$2,332,440.28	\$3,771,596.34	\$2,711,126.93
	22	23	24	25	26	27	28
ENERGY	\$7,376,728.05	\$7,545,785.15	\$9,727,856.84	\$12,647,811.34	\$10,028,969.40	\$4,560,642.47	\$4,145,304.70
TRANSMISSION SERVICE	\$1,193,734.03	\$948,033.93	\$1,711,495.28	\$2,874,307.67	\$1,412,360.51	\$1,231,653.68	\$1,736,455.97
UPLIFT	\$123,814.22	\$424,769.83	\$663,974.87	\$438,314.78	\$196,961.07	\$432,403.31	\$274,959.51
RESIDUALS	(\$107,730.70)	(\$173,734.87)	(\$128,387.13)	\$841,832.49	(\$190,907.38)	(\$69,548.71)	(\$117,866.00)
ANCILLARY SERVICES	\$679,708.49	\$684,561.94	\$713,241.21	\$687,581.40	\$691,083.11	\$617,527.10	\$642,575.12
TCC	\$1,173,490.04	\$488,789.27	\$1,056,375.84	\$3,881,539.27	\$1,121,359.12	\$1,572,637.58	\$1,857,471.37
	29	30	31				
ENERGY	\$4,043,187.84	\$6,179,929.41	\$7,486,009.26				
TRANSMISSION SERVICE	\$1,639,740.26	\$1,330,353.67	\$2,602,396.01				
UPLIFT	\$352,809.37	\$120,165.13	\$329,958.88				
RESIDUALS	(\$279,479.05)	(\$150,673.41)	(\$213,960.43)				
ANCILLARY SERVICES	\$601,267.23	\$612,352.85	\$683,785.46				
TCC	\$1,643,397.26	\$972,475.78	\$1,866,665.41				



SETTLEMENTS REPORT
 ATTACHMENT D: MAY 2000 CLOSEOUT SETTLEMENT
 OCTOBER 21, 2005

CLOSEOUT SETTLEMENT MARKET COSTS DELTA

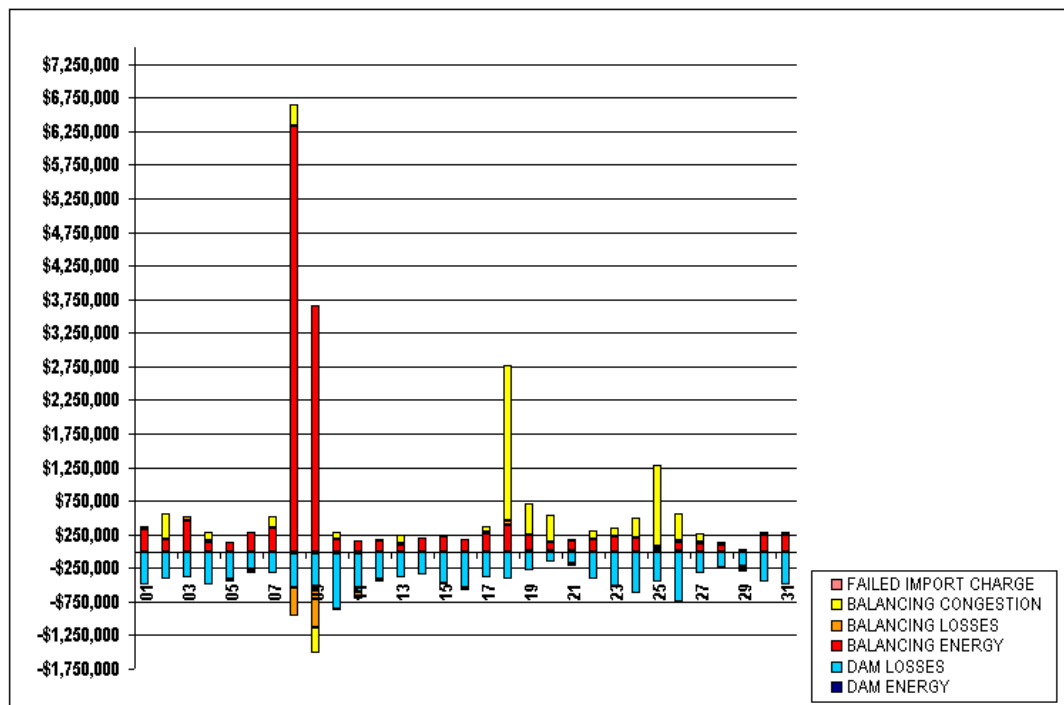
	MONDAY	TUESDAY	WEDNESDAY	THURSDAY	FRIDAY	SATURDAY	SUNDAY
	1	2	3	4	5	6	7
ENERGY	\$0.00	\$0.00	\$0.00	\$0.00	\$0.00	\$0.00	\$0.00
TRANSMISSION SERVICE	\$0.00	\$0.00	\$0.00	\$0.00	\$0.00	\$0.00	\$0.00
UPLIFT	\$0.00	\$0.00	\$0.00	\$0.00	\$0.00	\$0.00	(\$5,800,145.11)
RESIDUALS	\$0.00	\$0.00	\$0.00	\$0.00	\$0.00	\$0.00	\$0.00
ANCILLARY SERVICES	\$0.00	\$0.00	\$0.00	\$0.00	\$0.00	\$0.00	\$0.00
TCC	\$0.00	(\$433.01)	(\$940.84)	\$0.00	(\$3,301.97)	(\$4,388.58)	(\$2,005.95)
	8	9	10	11	12	13	14
ENERGY	\$0.00	\$0.00	\$0.00	\$0.00	\$0.00	\$0.00	\$0.00
TRANSMISSION SERVICE	\$0.00	\$0.00	\$0.00	\$0.00	\$0.00	\$0.00	\$0.00
UPLIFT	\$0.00	\$0.00	\$0.00	\$0.00	\$0.00	\$0.00	\$0.00
RESIDUALS	\$0.00	\$0.00	\$0.00	\$0.00	\$0.00	(\$1.06)	\$0.00
ANCILLARY SERVICES	\$0.00	\$0.00	\$0.00	\$0.00	\$0.00	\$0.00	\$0.00
TCC	(\$41.28)	(\$29.67)	(\$10.32)	\$0.00	(\$752.07)	(\$2,467.77)	(\$1,596.59)
	15	16	17	18	19	20	21
ENERGY	\$0.00	\$0.00	\$0.00	\$0.00	\$0.00	\$0.00	\$0.00
TRANSMISSION SERVICE	\$0.00	\$0.00	\$0.00	\$0.00	\$0.00	\$0.00	\$0.00
UPLIFT	\$0.00	\$0.00	\$0.00	\$0.00	\$0.00	\$0.00	\$0.00
RESIDUALS	\$0.00	\$0.00	\$0.00	\$0.00	\$0.00	\$0.00	\$0.00
ANCILLARY SERVICES	\$0.00	\$0.00	\$0.00	\$0.00	\$0.00	\$0.00	\$0.00
TCC	(\$1,502.42)	(\$680.69)	(\$3,296.38)	(\$789.91)	(\$8,854.56)	(\$13,717.00)	(\$11,511.96)
	22	23	24	25	26	27	28
ENERGY	\$0.00	\$0.00	\$0.00	\$0.00	\$0.00	\$0.00	\$0.00
TRANSMISSION SERVICE	\$0.00	\$0.00	\$0.00	\$0.00	\$0.00	\$0.00	\$0.00
UPLIFT	\$0.00	\$0.00	\$0.00	\$0.00	\$0.00	\$0.00	\$0.00
RESIDUALS	\$0.00	\$0.00	\$0.00	\$0.00	\$0.00	\$0.00	\$0.00
ANCILLARY SERVICES	\$0.00	\$0.00	\$0.00	\$0.00	\$0.00	\$0.00	\$0.00
TCC	(\$4,168.85)	(\$1,551.87)	(\$1,311.07)	(\$11,561.84)	(\$3,004.84)	(\$2,342.64)	(\$5,610.64)
	29	30	31				
ENERGY	\$0.00	\$0.00	\$0.00				
TRANSMISSION SERVICE	\$0.00	\$0.00	\$0.00				
UPLIFT	\$0.00	\$0.00	\$0.00				
RESIDUALS	\$0.00	\$0.00	\$0.00				
ANCILLARY SERVICES	\$0.00	\$0.00	\$0.00				
TCC	(\$5,834.24)	(\$3,438.71)	(\$636.83)				



SETTLEMENTS REPORT
ATTACHMENT D: MAY 2000 CLOSEOUT SETTLEMENT
OCTOBER 21, 2005

REBILL SETTLEMENT MARKET RESIDUALS

	MONDAY	TUESDAY	WEDNESDAY	THURSDAY	FRIDAY	SATURDAY	SUNDAY
	1	2	3	4	5	6	7
DAM ENERGY	(\$18,114.51)	(\$10,989.21)	(\$9,076.96)	(\$16,059.32)	(\$10,275.72)	(\$6,434.05)	(\$9,408.68)
DAM LOSSES	(\$472,717.18)	(\$411,100.46)	(\$388,905.17)	(\$472,668.69)	(\$409,118.01)	(\$255,076.80)	(\$312,006.31)
BALANCING ENERGY	\$329,235.45	\$182,020.65	\$451,285.99	\$138,623.02	\$147,860.28	\$296,677.08	\$340,085.67
BALANCING LOSSES	\$31,753.32	\$3,117.64	\$73,406.74	\$12,519.38	(\$25,648.53)	(\$55,459.18)	(\$16,816.76)
BALANCING CONGESTION	\$8,419.54	\$385,611.56	(\$477.70)	\$135,468.96	(\$7,125.15)	(\$21,573.76)	\$184,463.12
FAILED IMPORT CHARGE	\$0.00	\$0.00	\$0.00	\$0.00	\$0.00	\$0.00	\$0.00
	8	9	10	11	12	13	14
DAM ENERGY	(\$26,009.26)	(\$26,460.07)	(\$23,413.01)	(\$34,219.82)	(\$13,258.77)	(\$7,496.10)	(\$2,130.14)
DAM LOSSES	(\$515,290.28)	(\$528,400.27)	(\$828,581.96)	(\$578,400.15)	(\$409,488.22)	(\$377,463.41)	(\$347,864.76)
BALANCING ENERGY	\$6,334,204.36	\$3,651,794.95	\$177,373.11	\$159,691.42	\$160,841.09	\$101,428.53	\$194,020.42
BALANCING LOSSES	(\$416,108.06)	(\$577,718.22)	(\$35,338.69)	(\$55,056.66)	(\$39,519.64)	\$9,433.31	\$326.27
BALANCING CONGESTION	\$314,600.50	(\$383,829.38)	\$111,515.24	(\$35,874.19)	\$14,226.47	\$124,628.75	(\$2,318.92)
FAILED IMPORT CHARGE	\$0.00	\$0.00	\$0.00	\$0.00	\$0.00	\$0.00	\$0.00
	15	16	17	18	19	20	21
DAM ENERGY	(\$9,873.51)	(\$11,464.78)	\$280.27	\$256.97	\$702.00	\$317.86	\$651.74
DAM LOSSES	(\$465,463.54)	(\$528,478.09)	(\$395,345.00)	(\$416,260.58)	(\$294,458.17)	(\$154,671.89)	(\$189,829.07)
BALANCING ENERGY	\$231,068.09	\$188,610.54	\$268,433.62	\$396,687.65	\$247,603.58	\$138,509.60	\$162,632.16
BALANCING LOSSES	(\$19,360.65)	(\$13,436.29)	\$18,284.91	\$49,346.52	\$3,504.98	(\$12,555.47)	(\$39,047.45)
BALANCING CONGESTION	\$14,394.98	(\$21,303.02)	\$75,178.75	\$2,325,957.08	\$465,845.17	\$408,290.88	\$16,244.17
FAILED IMPORT CHARGE	\$0.00	\$0.00	\$0.00	\$0.00	\$0.00	\$0.00	\$0.00
	22	23	24	25	26	27	28
DAM ENERGY	\$124.50	(\$105.26)	\$169.74	\$468.62	\$515.66	\$103.91	\$41.55
DAM LOSSES	(\$407,548.76)	(\$518,732.30)	(\$629,604.69)	(\$446,851.76)	(\$748,057.48)	(\$327,289.29)	(\$249,436.02)
BALANCING ENERGY	\$171,675.57	\$228,870.39	\$199,231.49	\$62,662.73	\$136,586.81	\$122,406.39	\$86,927.06
BALANCING LOSSES	(\$2,997.94)	(\$7,669.44)	(\$524.81)	\$15,632.01	\$15,804.33	\$25,883.65	\$4,958.05
BALANCING CONGESTION	\$128,922.71	\$125,103.88	\$292,224.86	\$1,205,977.78	\$400,916.43	\$108,874.16	\$39,517.19
FAILED IMPORT CHARGE	\$0.00	\$0.00	\$0.00	\$0.00	\$0.00	\$0.00	\$0.00
	29	30	31				
DAM ENERGY	\$81.01	\$207.61	\$157.38				
DAM LOSSES	(\$216,926.02)	(\$450,183.11)	(\$495,574.17)				
BALANCING ENERGY	(\$52,500.46)	\$250,556.94	\$237,791.17				
BALANCING LOSSES	(\$31,969.64)	\$18,228.02	\$22,315.72				
BALANCING CONGESTION	\$21,573.59	\$27,861.83	\$18,676.89				
FAILED IMPORT CHARGE	\$0.00	\$0.00	\$0.00				

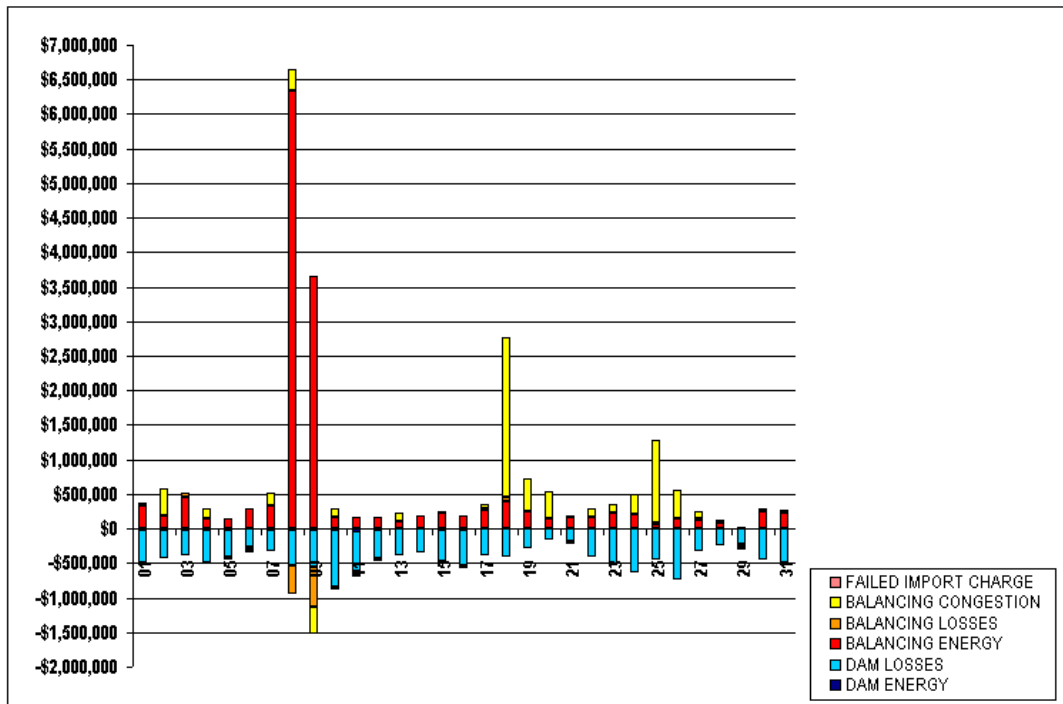


FOR DISCUSSION PURPOSES ONLY

SETTLEMENTS REPORT
 ATTACHMENT D: MAY 2000 CLOSEOUT SETTLEMENT
 OCTOBER 21, 2005

CLOSEOUT SETTLEMENT MARKET RESIDUALS ANALYSIS

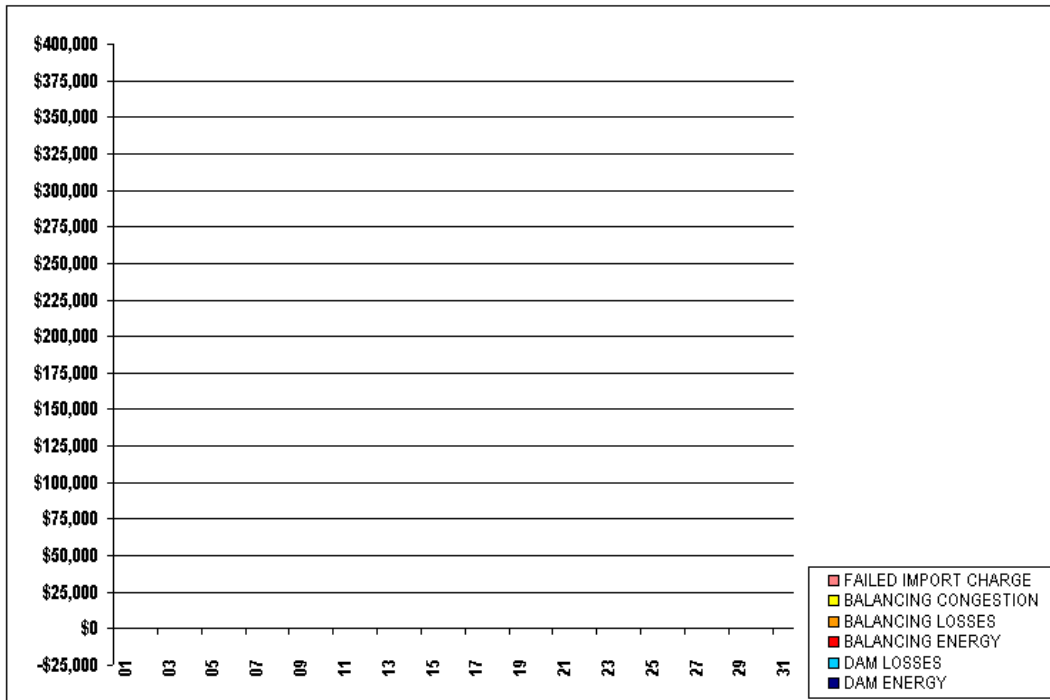
	MONDAY	TUESDAY	WEDNESDAY	THURSDAY	FRIDAY	SATURDAY	SUNDAY
	1	2	3	4	5	6	7
DAM ENERGY	(\$18,114.51)	(\$10,989.21)	(\$9,076.96)	(\$16,059.32)	(\$10,275.72)	(\$6,434.05)	(\$9,408.63)
DAM LOSSES	(\$472,717.18)	(\$411,100.46)	(\$388,905.17)	(\$472,668.69)	(\$409,118.01)	(\$255,076.80)	(\$312,006.31)
BALANCING ENERGY	\$329,235.46	\$182,020.65	\$451,285.99	\$138,623.02	\$147,860.28	\$296,677.08	\$340,085.67
BALANCING LOSSES	\$31,753.32	\$3,117.64	\$73,405.74	\$12,519.38	(\$25,648.53)	(\$55,459.18)	(\$16,816.76)
BALANCING CONGESTION	\$8,419.54	\$385,611.56	(\$477.70)	\$135,468.96	(\$7,125.15)	(\$21,573.76)	\$184,463.12
FAILED IMPORT CHARGE	\$0.00	\$0.00	\$0.00	\$0.00	\$0.00	\$0.00	\$0.00
	8	9	10	11	12	13	14
DAM ENERGY	(\$26,009.26)	(\$26,460.07)	(\$23,413.01)	(\$34,219.82)	(\$13,258.77)	(\$7,496.18)	(\$2,130.14)
DAM LOSSES	(\$515,290.28)	(\$528,400.27)	(\$828,531.96)	(\$578,400.15)	(\$409,488.22)	(\$377,464.56)	(\$347,364.76)
BALANCING ENERGY	\$6,334,204.36	\$3,651,794.95	\$177,373.11	\$159,691.42	\$160,841.09	\$101,428.73	\$194,020.42
BALANCING LOSSES	(\$416,108.06)	(\$577,718.22)	(\$35,338.69)	(\$55,056.66)	(\$39,519.64)	\$9,433.31	\$326.27
BALANCING CONGESTION	\$314,600.50	(\$383,829.38)	\$111,515.24	(\$35,874.19)	\$14,226.47	\$124,628.72	(\$2,318.92)
FAILED IMPORT CHARGE	\$0.00	\$0.00	\$0.00	\$0.00	\$0.00	\$0.00	\$0.00
	15	16	17	18	19	20	21
DAM ENERGY	(\$9,873.51)	(\$11,464.78)	\$280.27	\$256.97	\$702.00	\$317.86	\$651.74
DAM LOSSES	(\$465,463.54)	(\$528,478.09)	(\$395,345.00)	(\$416,260.58)	(\$294,458.17)	(\$154,671.89)	(\$189,829.07)
BALANCING ENERGY	\$231,068.09	\$188,610.54	\$268,433.62	\$396,687.65	\$247,603.58	\$138,509.60	\$162,632.16
BALANCING LOSSES	(\$19,360.65)	(\$13,436.29)	\$18,284.91	\$49,346.52	\$3,504.98	(\$12,555.47)	(\$39,047.45)
BALANCING CONGESTION	\$14,394.98	(\$21,303.02)	\$75,178.75	\$2,325,957.08	\$465,845.17	\$408,290.88	\$16,244.17
FAILED IMPORT CHARGE	\$0.00	\$0.00	\$0.00	\$0.00	\$0.00	\$0.00	\$0.00
	22	23	24	25	26	27	28
DAM ENERGY	\$124.50	(\$105.26)	\$169.74	\$468.62	\$515.66	\$103.91	\$41.55
DAM LOSSES	(\$407,548.76)	(\$518,732.30)	(\$629,604.69)	(\$446,851.76)	(\$748,057.48)	(\$327,289.29)	(\$249,436.02)
BALANCING ENERGY	\$171,675.57	\$223,870.39	\$199,231.49	\$62,662.73	\$136,586.81	\$122,406.39	\$86,927.06
BALANCING LOSSES	(\$2,997.94)	(\$7,669.44)	(\$524.81)	\$15,632.01	\$15,804.33	\$25,883.65	\$4,958.05
BALANCING CONGESTION	\$128,922.71	\$125,103.88	\$292,224.86	\$1,205,977.78	\$400,916.43	\$108,874.16	\$39,517.19
FAILED IMPORT CHARGE	\$0.00	\$0.00	\$0.00	\$0.00	\$0.00	\$0.00	\$0.00
	29	30	31				
DAM ENERGY	\$81.01	\$207.61	\$157.38				
DAM LOSSES	(\$216,926.02)	(\$450,183.11)	(\$495,574.17)				
BALANCING ENERGY	(\$52,500.46)	\$250,556.94	\$237,791.17				
BALANCING LOSSES	(\$31,969.64)	\$18,228.02	\$22,315.72				
BALANCING CONGESTION	\$21,573.59	\$27,861.83	\$18,676.89				
FAILED IMPORT CHARGE	\$0.00	\$0.00	\$0.00				



SETTLEMENTS REPORT
 ATTACHMENT D: MAY 2000 CLOSEOUT SETTLEMENT
 OCTOBER 21, 2005

CLOSEOUT SETTLEMENT MARKET RESIDUALS DELTA ANALYSIS

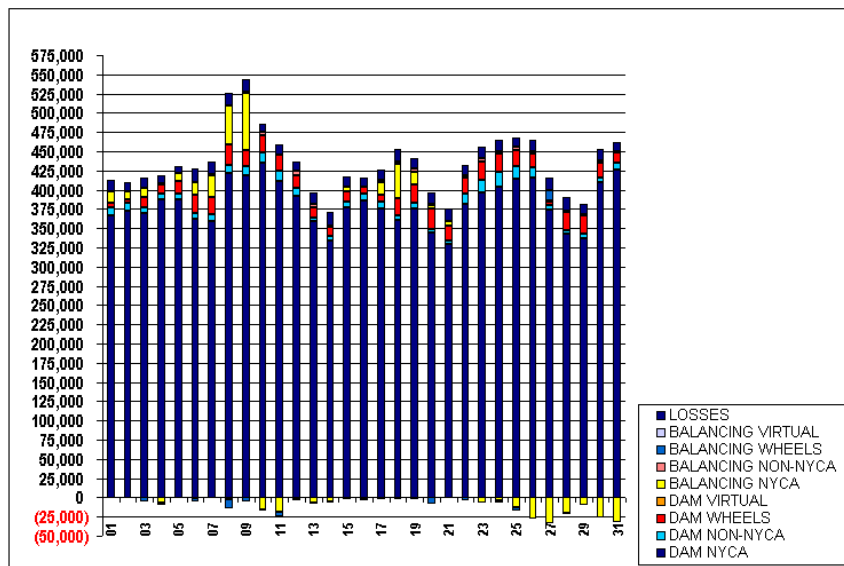
	MONDAY	TUESDAY	WEDNESDAY	THURSDAY	FRIDAY	SATURDAY	SUNDAY
	1	2	3	4	5	6	7
DAM ENERGY	\$0.00	\$0.00	\$0.00	\$0.00	\$0.00	\$0.00	\$0.00
DAM LOSSES	\$0.00	\$0.00	\$0.00	\$0.00	\$0.00	\$0.00	\$0.00
BALANCING ENERGY	\$0.00	\$0.00	\$0.00	\$0.00	\$0.00	\$0.00	\$0.00
BALANCING LOSSES	\$0.00	\$0.00	\$0.00	\$0.00	\$0.00	\$0.00	\$0.00
BALANCING CONGESTION	\$0.00	\$0.00	\$0.00	\$0.00	\$0.00	\$0.00	\$0.00
FAILED IMPORT CHARGE	\$0.00	\$0.00	\$0.00	\$0.00	\$0.00	\$0.00	\$0.00
	8	9	10	11	12	13	14
DAM ENERGY	\$0.00	\$0.00	\$0.00	\$0.00	\$0.00	(\$0.08)	\$0.00
DAM LOSSES	\$0.00	\$0.00	\$0.00	\$0.00	\$0.00	(\$1.15)	\$0.00
BALANCING ENERGY	\$0.00	\$0.00	\$0.00	\$0.00	\$0.00	\$0.20	\$0.00
BALANCING LOSSES	\$0.00	\$0.00	\$0.00	\$0.00	\$0.00	\$0.00	\$0.00
BALANCING CONGESTION	\$0.00	\$0.00	\$0.00	\$0.00	\$0.00	(\$0.03)	\$0.00
FAILED IMPORT CHARGE	\$0.00	\$0.00	\$0.00	\$0.00	\$0.00	\$0.00	\$0.00
	15	16	17	18	19	20	21
DAM ENERGY	\$0.00	\$0.00	\$0.00	\$0.00	\$0.00	\$0.00	\$0.00
DAM LOSSES	\$0.00	\$0.00	\$0.00	\$0.00	\$0.00	\$0.00	\$0.00
BALANCING ENERGY	\$0.00	\$0.00	\$0.00	\$0.00	\$0.00	\$0.00	\$0.00
BALANCING LOSSES	\$0.00	\$0.00	\$0.00	\$0.00	\$0.00	\$0.00	\$0.00
BALANCING CONGESTION	\$0.00	\$0.00	\$0.00	\$0.00	\$0.00	\$0.00	\$0.00
FAILED IMPORT CHARGE	\$0.00	\$0.00	\$0.00	\$0.00	\$0.00	\$0.00	\$0.00
	22	23	24	25	26	27	28
DAM ENERGY	\$0.00	\$0.00	\$0.00	\$0.00	\$0.00	\$0.00	\$0.00
DAM LOSSES	\$0.00	\$0.00	\$0.00	\$0.00	\$0.00	\$0.00	\$0.00
BALANCING ENERGY	\$0.00	\$0.00	\$0.00	\$0.00	\$0.00	\$0.00	\$0.00
BALANCING LOSSES	\$0.00	\$0.00	\$0.00	\$0.00	\$0.00	\$0.00	\$0.00
BALANCING CONGESTION	\$0.00	\$0.00	\$0.00	\$0.00	\$0.00	\$0.00	\$0.00
FAILED IMPORT CHARGE	\$0.00	\$0.00	\$0.00	\$0.00	\$0.00	\$0.00	\$0.00
	29	30	31				
DAM ENERGY	\$0.00	\$0.00	\$0.00				
DAM LOSSES	\$0.00	\$0.00	\$0.00				
BALANCING ENERGY	\$0.00	\$0.00	\$0.00				
BALANCING LOSSES	\$0.00	\$0.00	\$0.00				
BALANCING CONGESTION	\$0.00	\$0.00	\$0.00				
FAILED IMPORT CHARGE	\$0.00	\$0.00	\$0.00				



SETTLEMENTS REPORT
ATTACHMENT D: MAY 2000 CLOSEOUT SETTLEMENT
OCTOBER 21, 2005

REBILL SETTLEMENT MARKET WITHDRAWALS ANALYSIS

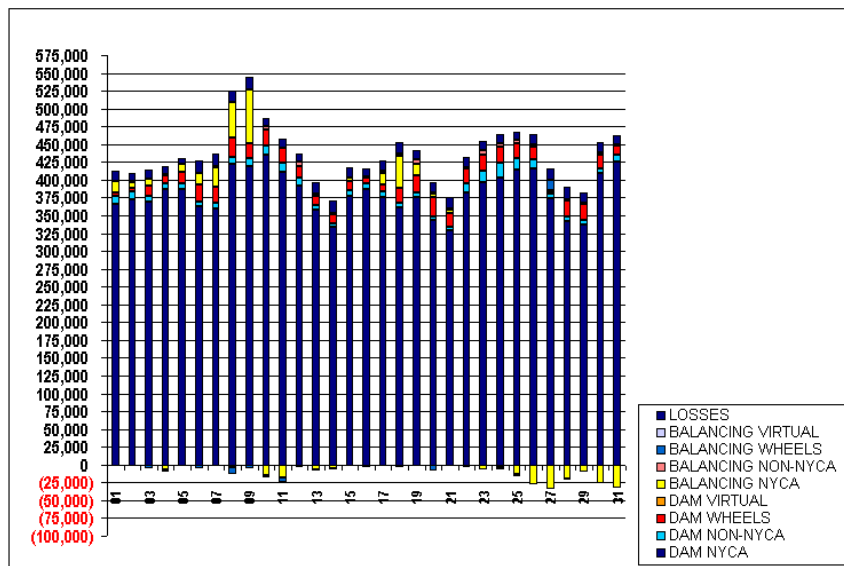
	MONDAY	TUESDAY	WEDNESDAY	THURSDAY	FRIDAY	SATURDAY	SUNDAY
	1	2	3	4	5	6	7
DAM NYCA	366,833	372,595	369,252	386,865	387,062	362,957	359,642
DAM NON-NYCA	10,411	10,418	8,127	8,171	8,228	6,478	8,730
DAM WHEELS	5,088	5,088	13,616	11,488	16,488	24,800	22,400
DAM VIRTUAL	0	0	0	0	0	0	0
BALANCING NYCA	15,234	9,199	10,720	(6,417)	10,056	15,733	27,282
BALANCING NON-NYCA	26	523	51	1,265	(936)	(227)	1,600
BALANCING WHEELS	(150)	(300)	(5,968)	(3,366)	(3)	(4,617)	(175)
BALANCING VIRTUAL	0	0	0	0	0	0	0
LOSSES	14,493	12,247	13,300	11,302	9,256	17,106	17,306
	8	9	10	11	12	13	14
DAM NYCA	422,336	418,996	435,211	410,829	391,750	358,832	334,142
DAM NON-NYCA	9,497	11,968	13,194	13,291	11,313	5,408	5,355
DAM WHEELS	27,196	20,828	22,477	21,088	15,988	12,800	12,800
DAM VIRTUAL	0	0	0	0	0	0	0
BALANCING NYCA	49,860	74,816	(15,126)	(18,800)	(903)	(6,580)	(5,557)
BALANCING NON-NYCA	(2,801)	441	4,109	255	6,022	4,082	695
BALANCING WHEELS	(10,850)	(4,662)	(2,693)	(5,400)	(2,265)	(1,850)	(1,200)
BALANCING VIRTUAL	0	0	0	0	0	0	0
LOSSES	17,064	17,115	11,030	12,907	10,971	15,224	17,876
	15	16	17	18	19	20	21
DAM NYCA	376,543	386,492	374,989	360,484	375,671	344,046	329,851
DAM NON-NYCA	8,011	8,174	9,180	6,613	6,622	4,848	4,594
DAM WHEELS	13,088	8,788	9,888	21,888	24,118	26,120	19,320
DAM VIRTUAL	0	0	0	0	0	0	0
BALANCING NYCA	5,561	(1,091)	15,964	44,956	16,641	5,610	4,999
BALANCING NON-NYCA	150	725	2,270	2,748	5,040	1,309	600
BALANCING WHEELS	(1,900)	(3,200)	(2,100)	(2,817)	(2,658)	(7,617)	(500)
BALANCING VIRTUAL	0	0	0	0	0	0	0
LOSSES	13,361	12,314	14,357	16,871	13,499	14,880	16,351
	22	23	24	25	26	27	28
DAM NYCA	382,166	396,113	403,754	414,171	416,494	374,740	342,411
DAM NON-NYCA	13,001	17,165	19,687	15,932	12,087	5,512	5,622
DAM WHEELS	20,048	22,688	22,908	21,623	18,448	4,288	23,488
DAM VIRTUAL	0	0	0	0	0	0	0
BALANCING NYCA	2,973	(6,818)	(3,660)	(13,403)	(27,200)	(33,593)	(19,893)
BALANCING NON-NYCA	(31)	5,000	4,389	4,507	3,230	1,228	1,750
BALANCING WHEELS	(6,230)	484	(6,660)	(6,719)	(370)	13,482	(1,800)
BALANCING VIRTUAL	0	0	0	0	0	0	0
LOSSES	13,638	13,792	14,022	11,877	14,443	16,403	16,841
	29	30	31				
DAM NYCA	336,492	409,491	426,139				
DAM NON-NYCA	6,707	6,441	8,964				
DAM WHEELS	23,488	19,496	13,232				
DAM VIRTUAL	0	0	0				
BALANCING NYCA	(9,807)	(25,851)	(31,968)				
BALANCING NON-NYCA	1,491	1,430	1,836				
BALANCING WHEELS	(50)	1,759	0				
BALANCING VIRTUAL	0	0	0				
LOSSES	13,520	14,264	12,382				



SETTLEMENTS REPORT
ATTACHMENT D: MAY 2000 CLOSEOUT SETTLEMENT
OCTOBER 21, 2005

CLOSEOUT SETTLEMENT MARKET WITHDRAWALS ANALYSIS

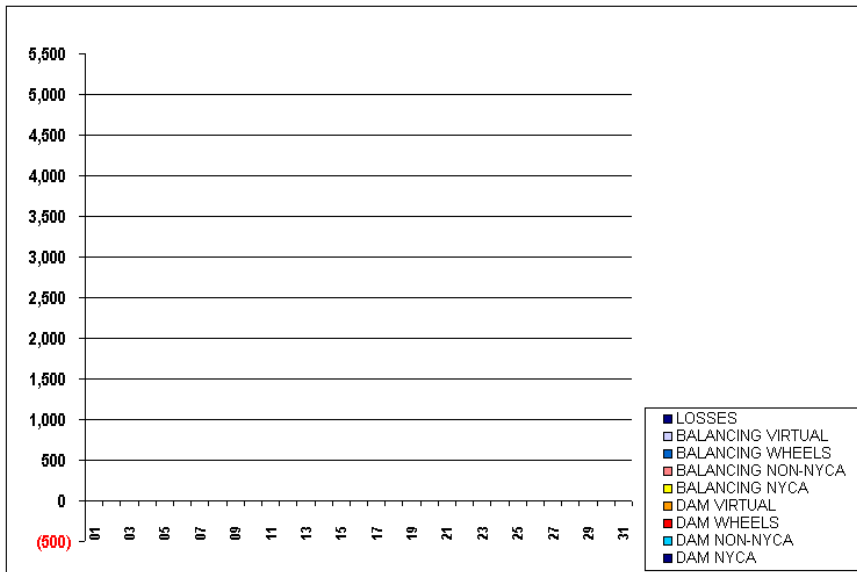
	MONDAY	TUESDAY	WEDNESDAY	THURSDAY	FRIDAY	SATURDAY	SUNDAY
	1	2	3	4	5	6	7
DAM NYCA	366,833	372,595	369,252	366,865	367,062	362,957	359,642
DAM NON-NYCA	10,411	10,418	8,127	8,171	8,228	6,478	8,720
DAM WHEELS	5,088	5,088	13,616	11,488	16,488	24,800	22,400
DAM VIRTUAL	0	0	0	0	0	0	0
BALANCING NYCA	15,234	9,199	10,720	(6,417)	10,056	15,733	27,282
BALANCING NON-NYCA	26	523	51	1,265	(936)	(227)	1,600
BALANCING WHEELS	(150)	(300)	(5,968)	(3,366)	(3)	(4,617)	(175)
BALANCING VIRTUAL	0	0	0	0	0	0	0
LOSSES	14,493	12,247	13,300	11,302	9,256	17,106	17,306
	8	9	10	11	12	13	14
DAM NYCA	422,336	418,996	435,211	410,829	391,750	358,832	334,142
DAM NON-NYCA	9,497	11,968	13,194	13,291	11,313	5,408	5,355
DAM WHEELS	27,196	20,828	22,477	21,088	15,988	12,800	12,800
DAM VIRTUAL	0	0	0	0	0	0	0
BALANCING NYCA	49,860	74,816	(15,126)	(18,800)	(903)	(6,580)	(5,557)
BALANCING NON-NYCA	(2,801)	441	4,109	255	6,022	4,082	695
BALANCING WHEELS	(10,850)	(4,662)	(2,693)	(6,400)	(2,265)	(1,850)	(1,200)
BALANCING VIRTUAL	0	0	0	0	0	0	0
LOSSES	17,064	17,115	11,030	12,907	10,971	15,224	17,876
	15	16	17	18	19	20	21
DAM NYCA	376,543	386,492	374,989	360,484	375,671	344,046	329,851
DAM NON-NYCA	8,011	8,174	9,180	6,613	6,622	4,848	4,594
DAM WHEELS	13,088	8,788	9,888	21,888	24,118	26,120	19,320
DAM VIRTUAL	0	0	0	0	0	0	0
BALANCING NYCA	5,561	(1,091)	15,964	44,966	16,641	5,610	4,399
BALANCING NON-NYCA	150	725	2,270	2,748	5,040	1,309	600
BALANCING WHEELS	(1,900)	(3,200)	(2,100)	(2,817)	(2,658)	(7,617)	(500)
BALANCING VIRTUAL	0	0	0	0	0	0	0
LOSSES	13,361	12,314	14,357	16,871	13,499	14,860	16,351
	22	23	24	25	26	27	28
DAM NYCA	382,166	396,113	403,754	414,171	416,494	374,740	342,411
DAM NON-NYCA	13,001	17,165	19,687	15,932	12,087	5,512	5,622
DAM WHEELS	20,048	22,688	22,908	21,623	18,448	4,288	23,488
DAM VIRTUAL	0	0	0	0	0	0	0
BALANCING NYCA	2,973	(6,818)	(3,660)	(13,403)	(27,200)	(33,593)	(19,893)
BALANCING NON-NYCA	(31)	5,000	4,389	4,507	3,230	1,228	1,750
BALANCING WHEELS	(2,230)	484	(6,660)	(6,719)	(670)	13,482	(1,800)
BALANCING VIRTUAL	0	0	0	0	0	0	0
LOSSES	13,638	13,792	14,022	11,877	14,443	16,403	16,841
	29	30	31				
DAM NYCA	336,492	409,491	426,139				
DAM NON-NYCA	6,707	6,441	8,964				
DAM WHEELS	23,488	19,496	13,232				
DAM VIRTUAL	0	0	0				
BALANCING NYCA	(9,807)	(25,851)	(31,968)				
BALANCING NON-NYCA	1,491	1,430	1,836				
BALANCING WHEELS	(50)	1,759	0				
BALANCING VIRTUAL	0	0	0				
LOSSES	13,520	14,264	12,382				



SETTLEMENTS REPORT
 ATTACHMENT D: MAY 2000 CLOSEOUT SETTLEMENT
 OCTOBER 21, 2005

CLOSEOUT SETTLEMENT MARKET WITHDRAWALS DELTA ANALYSIS

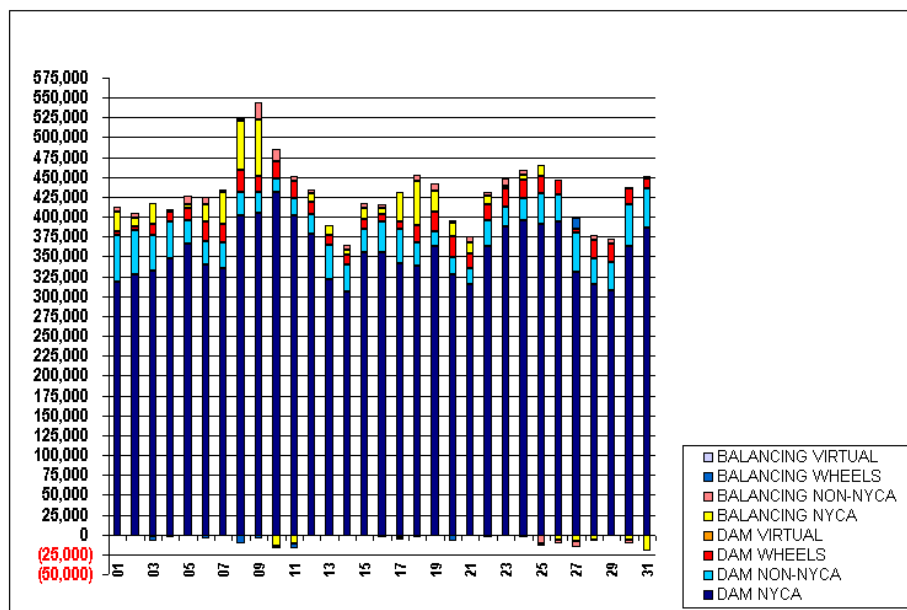
	MONDAY	TUESDAY	WEDNESDAY	THURSDAY	FRIDAY	SATURDAY	SUNDAY
	1	2	3	4	5	6	7
DAM NYCA	0	0	0	0	0	0	0
DAM NON-NYCA	0	0	0	0	0	0	0
DAM WHEELS	0	0	0	0	0	0	0
DAM VIRTUAL	0	0	0	0	0	0	0
BALANCING NYCA	0	0	0	0	0	0	0
BALANCING NON-NYCA	0	0	0	0	0	0	0
BALANCING WHEELS	0	0	0	0	0	0	0
BALANCING VIRTUAL	0	0	0	0	0	0	0
LOSSES	0	0	0	0	0	0	0
	8	9	10	11	12	13	14
DAM NYCA	0	0	0	0	0	0	0
DAM NON-NYCA	0	0	0	0	0	0	0
DAM WHEELS	0	0	0	0	0	0	0
DAM VIRTUAL	0	0	0	0	0	0	0
BALANCING NYCA	0	0	0	0	0	0	0
BALANCING NON-NYCA	0	0	0	0	0	0	0
BALANCING WHEELS	0	0	0	0	0	0	0
BALANCING VIRTUAL	0	0	0	0	0	0	0
LOSSES	0	0	0	0	0	0	0
	15	16	17	18	19	20	21
DAM NYCA	0	0	0	0	0	0	0
DAM NON-NYCA	0	0	0	0	0	0	0
DAM WHEELS	0	0	0	0	0	0	0
DAM VIRTUAL	0	0	0	0	0	0	0
BALANCING NYCA	0	0	0	0	0	0	0
BALANCING NON-NYCA	0	0	0	0	0	0	0
BALANCING WHEELS	0	0	0	0	0	0	0
BALANCING VIRTUAL	0	0	0	0	0	0	0
LOSSES	0	0	0	0	0	0	0
	22	23	24	25	26	27	28
DAM NYCA	0	0	0	0	0	0	0
DAM NON-NYCA	0	0	0	0	0	0	0
DAM WHEELS	0	0	0	0	0	0	0
DAM VIRTUAL	0	0	0	0	0	0	0
BALANCING NYCA	0	0	0	0	0	0	0
BALANCING NON-NYCA	0	0	0	0	0	0	0
BALANCING WHEELS	0	0	0	0	0	0	0
BALANCING VIRTUAL	0	0	0	0	0	0	0
LOSSES	0	0	0	0	0	0	0
	29	30	31				
DAM NYCA	0	0	0				
DAM NON-NYCA	0	0	0				
DAM WHEELS	0	0	0				
DAM VIRTUAL	0	0	0				
BALANCING NYCA	0	0	0				
BALANCING NON-NYCA	0	0	0				
BALANCING WHEELS	0	0	0				
BALANCING VIRTUAL	0	0	0				
LOSSES	0	0	0				



SETTLEMENTS REPORT
ATTACHMENT D: MAY 2000 CLOSEOUT SETTLEMENT
OCTOBER 21, 2005

REBILL SETTLEMENT MARKET SUPPLY ANALYSIS

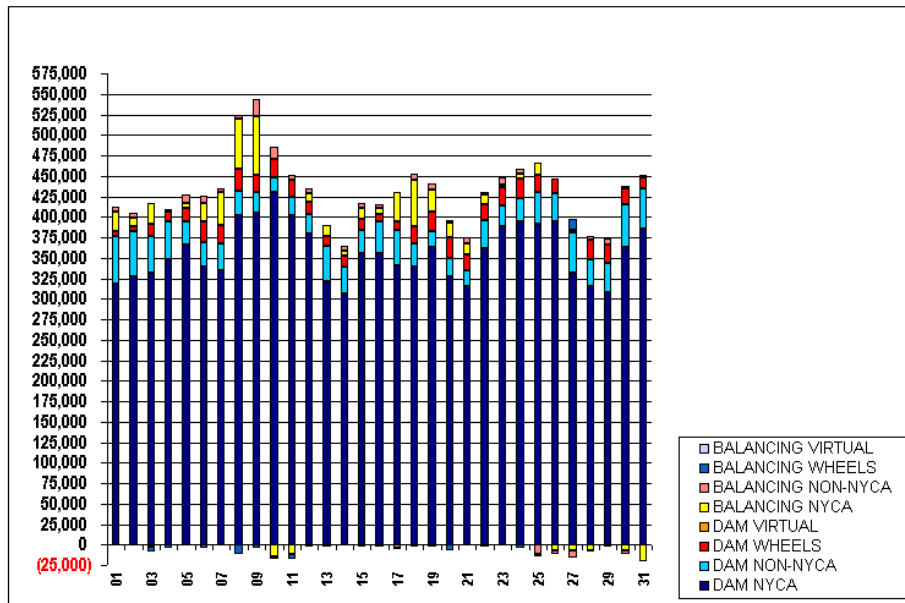
	MONDAY	TUESDAY	WEDNESDAY	THURSDAY	FRIDAY	SATURDAY	SUNDAY
	1	2	3	4	5	6	7
DAM NYCA	318,618	327,538	331,441	348,201	365,585	339,493	334,535
DAM NON-NYCA	58,116	55,169	45,684	46,421	29,405	29,599	33,493
DAM WHEELS	5,088	5,088	13,616	11,488	16,488	24,800	22,400
DAM VIRTUAL	0	0	0	0	0	0	0
BALANCING NYCA	25,227	10,881	25,867	1,815	4,900	22,282	40,072
BALANCING NON-NYCA	4,936	6,695	(2,043)	1,789	10,162	9,245	4,410
BALANCING WHEELS	(150)	(300)	(6,968)	(3,366)	(5)	(4,617)	(175)
BALANCING VIRTUAL	0	0	0	0	0	0	0
	8	9	10	11	12	13	14
DAM NYCA	401,203	404,912	430,387	401,653	379,246	321,489	306,289
DAM NON-NYCA	30,154	25,476	17,655	21,868	23,490	42,540	33,131
DAM WHEELS	27,196	20,828	22,477	21,088	15,988	12,800	12,300
DAM VIRTUAL	0	0	0	0	0	0	0
BALANCING NYCA	61,919	71,804	(15,164)	(11,912)	10,533	13,097	5,767
BALANCING NON-NYCA	3,737	20,676	15,393	6,472	5,485	(410)	6,619
BALANCING WHEELS	(10,850)	(4,662)	(2,693)	(5,400)	(2,265)	(1,850)	(1,200)
BALANCING VIRTUAL	0	0	0	0	0	0	0
	15	16	17	18	19	20	21
DAM NYCA	355,110	356,074	341,051	339,059	362,565	327,941	315,178
DAM NON-NYCA	29,212	38,374	43,129	28,022	19,759	20,982	19,326
DAM WHEELS	13,088	8,788	9,888	21,888	24,118	26,120	19,320
DAM VIRTUAL	0	0	0	0	0	0	0
BALANCING NYCA	12,865	7,348	36,307	56,823	26,198	17,786	14,292
BALANCING NON-NYCA	6,238	4,667	(3,887)	7,009	8,702	3,172	6,799
BALANCING WHEELS	(1,900)	(3,200)	(2,100)	(2,817)	(2,658)	(7,617)	(500)
BALANCING VIRTUAL	0	0	0	0	0	0	0
	22	23	24	25	26	27	28
DAM NYCA	362,286	387,903	394,936	390,959	394,419	331,023	315,122
DAM NON-NYCA	32,884	25,372	28,513	39,156	34,178	49,234	32,914
DAM WHEELS	20,048	22,688	22,908	21,623	18,448	4,288	23,488
DAM VIRTUAL	0	0	0	0	0	0	0
BALANCING NYCA	11,346	3,289	5,771	14,020	(6,755)	(7,759)	(6,662)
BALANCING NON-NYCA	4,015	8,368	7,151	(11,301)	(4,439)	(8,407)	5,357
BALANCING WHEELS	(3,230)	484	(3,660)	(3,719)	(370)	13,482	(1,800)
BALANCING VIRTUAL	0	0	0	0	0	0	0
	29	30	31				
DAM NYCA	307,783	363,595	385,561				
DAM NON-NYCA	35,423	52,344	49,539				
DAM WHEELS	23,488	19,496	13,232				
DAM VIRTUAL	0	0	0				
BALANCING NYCA	(2,429)	(7,269)	(21,053)				
BALANCING NON-NYCA	6,326	(3,974)	2,616				
BALANCING WHEELS	(50)	1,759	0				
BALANCING VIRTUAL	0	0	0				



SETTLEMENTS REPORT
ATTACHMENT D: MAY 2000 CLOSEOUT SETTLEMENT
OCTOBER 21, 2005

CLOSEOUT SETTLEMENT MARKET SUPPLY ANALYSIS

	MONDAY	TUESDAY	WEDNESDAY	THURSDAY	FRIDAY	SATURDAY	SUNDAY
	1	2	3	4	5	6	7
DAM NYCA	318,618	327,538	331,441	348,201	365,585	339,493	334,535
DAM NON-NYCA	58,116	55,169	45,684	46,421	29,405	29,599	33,493
DAM WHEELS	5,088	5,088	13,616	11,488	16,488	24,800	22,400
DAM VIRTUAL	0	0	0	0	0	0	0
BALANCING NYCA	25,227	10,881	25,867	1,815	4,900	22,282	40,072
BALANCING NON-NYCA	4,936	6,695	(2,043)	1,789	10,162	9,245	4,410
BALANCING WHEELS	(150)	(200)	(5,968)	(3,366)	(3)	(4,617)	(175)
BALANCING VIRTUAL	0	0	0	0	0	0	0
	8	9	10	11	12	13	14
DAM NYCA	401,203	404,912	430,387	401,653	379,246	321,489	306,289
DAM NON-NYCA	30,154	25,476	17,655	21,868	23,490	42,540	33,131
DAM WHEELS	27,196	20,828	22,477	21,088	15,988	12,800	12,800
DAM VIRTUAL	0	0	0	0	0	0	0
BALANCING NYCA	61,919	71,804	(15,164)	(11,912)	10,533	13,097	5,767
BALANCING NON-NYCA	3,737	20,676	15,393	6,472	5,485	(410)	6,619
BALANCING WHEELS	(10,850)	(4,662)	(2,693)	(5,400)	(2,265)	(1,850)	(1,200)
BALANCING VIRTUAL	0	0	0	0	0	0	0
	15	16	17	18	19	20	21
DAM NYCA	355,110	356,074	341,051	339,059	362,565	327,941	315,178
DAM NON-NYCA	29,212	38,374	43,129	28,022	19,759	20,982	19,326
DAM WHEELS	13,088	8,788	9,888	21,888	24,118	26,120	19,320
DAM VIRTUAL	0	0	0	0	0	0	0
BALANCING NYCA	12,865	7,348	36,307	56,823	26,198	17,786	14,292
BALANCING NON-NYCA	6,238	4,667	(3,887)	7,009	8,702	3,172	6,799
BALANCING WHEELS	(1,900)	(3,200)	(2,100)	(2,817)	(2,658)	(7,617)	(500)
BALANCING VIRTUAL	0	0	0	0	0	0	0
	22	23	24	25	26	27	28
DAM NYCA	362,286	387,903	394,936	390,959	394,419	331,023	315,122
DAM NON-NYCA	32,884	25,372	28,513	39,156	34,178	49,234	32,914
DAM WHEELS	20,048	22,688	22,908	21,623	18,448	4,288	23,488
DAM VIRTUAL	0	0	0	0	0	0	0
BALANCING NYCA	11,346	3,289	5,771	14,020	(6,755)	(7,759)	(6,662)
BALANCING NON-NYCA	4,015	8,368	7,151	(11,301)	(4,439)	(3,407)	5,357
BALANCING WHEELS	(2,230)	484	(3,660)	(3,719)	(370)	13,482	(1,800)
BALANCING VIRTUAL	0	0	0	0	0	0	0
	29	30	31				
DAM NYCA	307,783	363,595	385,561				
DAM NON-NYCA	35,423	52,344	49,539				
DAM WHEELS	23,488	19,496	13,232				
DAM VIRTUAL	0	0	0				
BALANCING NYCA	(2,429)	(7,269)	(21,053)				
BALANCING NON-NYCA	6,326	(3,974)	2,616				
BALANCING WHEELS	(60)	1,759	0				
BALANCING VIRTUAL	0	0	0				



SETTLEMENTS REPORT
 ATTACHMENT D: MAY 2000 CLOSEOUT SETTLEMENT
 OCTOBER 21, 2005

CLOSEOUT SETTLEMENT MARKET SUPPLY DELTA ANALYSIS

	MONDAY	TUESDAY	WEDNESDAY	THURSDAY	FRIDAY	SATURDAY	SUNDAY
	1	2	3	4	5	6	7
DAM NYCA	0	0	0	0	0	0	0
DAM NON-NYCA	0	0	0	0	0	0	0
DAM WHEELS	0	0	0	0	0	0	0
DAM VIRTUAL	0	0	0	0	0	0	0
BALANCING NYCA	0	0	0	0	0	0	0
BALANCING NON-NYCA	0	0	0	0	0	0	0
BALANCING WHEELS	0	0	0	0	0	0	0
BALANCING VIRTUAL	0	0	0	0	0	0	0
8	9	10	11	12	13	14	
DAM NYCA	0	0	0	0	0	0	0
DAM NON-NYCA	0	0	0	0	0	0	0
DAM WHEELS	0	0	0	0	0	0	0
DAM VIRTUAL	0	0	0	0	0	0	0
BALANCING NYCA	0	0	0	0	0	0	0
BALANCING NON-NYCA	0	0	0	0	0	0	0
BALANCING WHEELS	0	0	0	0	0	0	0
BALANCING VIRTUAL	0	0	0	0	0	0	0
15	16	17	18	19	20	21	
DAM NYCA	0	0	0	0	0	0	0
DAM NON-NYCA	0	0	0	0	0	0	0
DAM WHEELS	0	0	0	0	0	0	0
DAM VIRTUAL	0	0	0	0	0	0	0
BALANCING NYCA	0	0	0	0	0	0	0
BALANCING NON-NYCA	0	0	0	0	0	0	0
BALANCING WHEELS	0	0	0	0	0	0	0
BALANCING VIRTUAL	0	0	0	0	0	0	0
22	23	24	25	26	27	28	
DAM NYCA	0	0	0	0	0	0	0
DAM NON-NYCA	0	0	0	0	0	0	0
DAM WHEELS	0	0	0	0	0	0	0
DAM VIRTUAL	0	0	0	0	0	0	0
BALANCING NYCA	0	0	0	0	0	0	0
BALANCING NON-NYCA	0	0	0	0	0	0	0
BALANCING WHEELS	0	0	0	0	0	0	0
BALANCING VIRTUAL	0	0	0	0	0	0	0
29	30	31					
DAM NYCA	0	0	0				
DAM NON-NYCA	0	0	0				
DAM WHEELS	0	0	0				
DAM VIRTUAL	0	0	0				
BALANCING NYCA	0	0	0				
BALANCING NON-NYCA	0	0	0				
BALANCING WHEELS	0	0	0				
BALANCING VIRTUAL	0	0	0				

