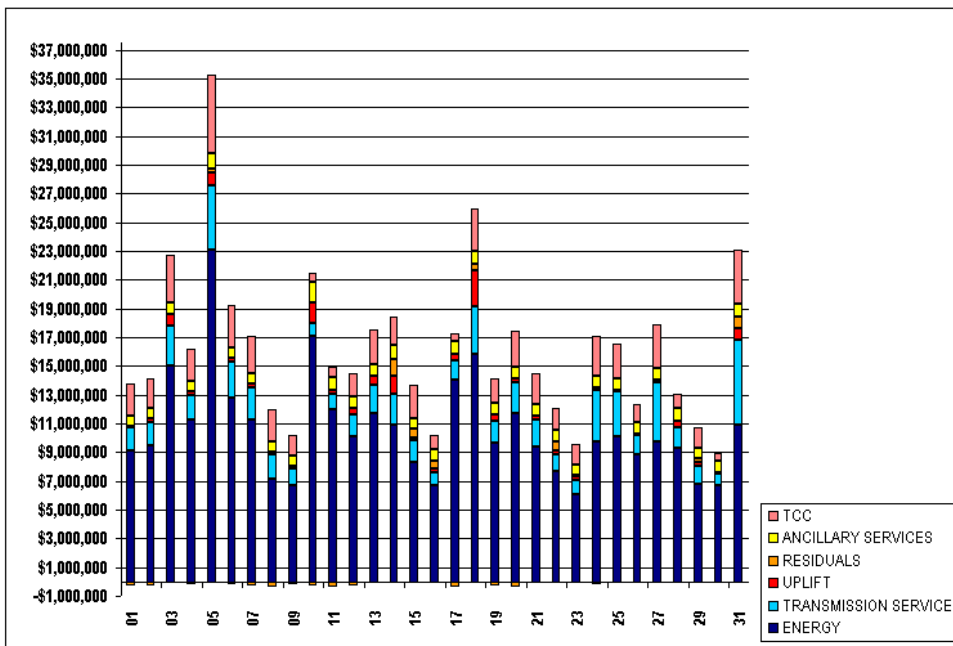


SETTLEMENTS REPORT
 ATTACHMENT D: JULY 2000 CLOSEOUT SETTLEMENT
 OCTOBER 21, 2005

24-MONTH SETTLEMENT ADJUSTMENT MARKET COSTS

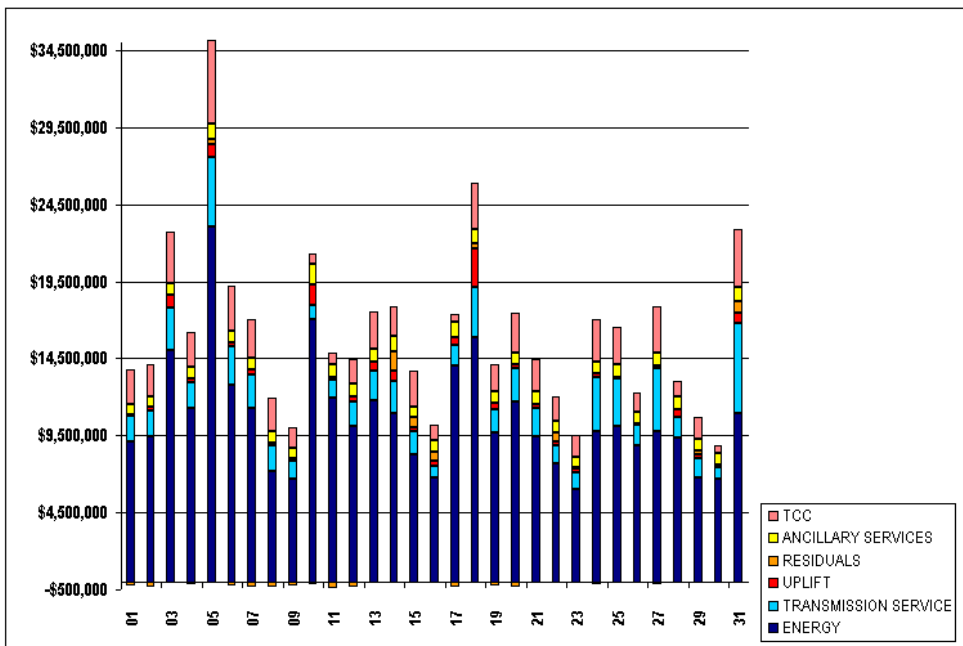
	MONDAY	TUESDAY	WEDNESDAY	THURSDAY	FRIDAY	SATURDAY	SUNDAY
ENERGY						1	2
TRANSMISSION SERVICE						\$9,113,072.71	\$9,463,695.52
UPLIFT						\$1,653,964.86	\$1,630,675.18
RESIDUALS						\$85,690.91	\$272,000.90
ANCILLARY SERVICES						(\$256,719.36)	(\$293,055.56)
TCC						\$709,037.87	\$703,313.70
						\$2,214,300.40	\$2,072,231.20
	3	4	5	6	7	8	9
ENERGY	\$15,044,770.21	\$11,254,517.29	\$23,060,710.27	\$12,759,745.34	\$11,262,180.36	\$7,177,909.29	\$6,695,208.07
TRANSMISSION SERVICE	\$2,763,743.26	\$1,675,172.49	\$4,524,060.40	\$2,509,324.95	\$2,198,006.66	\$1,663,957.97	\$1,135,091.27
UPLIFT	\$777,602.43	\$279,040.62	\$837,597.93	\$284,693.91	\$288,180.39	\$228,234.30	\$206,869.37
RESIDUALS	\$44,665.45	(\$188,260.52)	\$316,185.98	(\$219,525.92)	(\$294,946.97)	(\$357,806.95)	(\$231,189.72)
ANCILLARY SERVICES	\$772,956.85	\$729,690.16	\$1,047,713.21	\$741,094.37	\$757,192.91	\$693,697.95	\$759,697.74
TCC	\$3,348,635.62	\$2,286,084.31	\$5,493,451.83	\$2,912,900.57	\$2,651,739.54	\$2,177,726.10	\$1,377,276.15
	10	11	12	13	14	15	16
ENERGY	\$17,046,015.44	\$11,971,523.77	\$10,096,300.06	\$11,744,834.04	\$10,933,534.12	\$8,268,132.46	\$6,728,575.68
TRANSMISSION SERVICE	\$942,286.17	\$1,116,389.13	\$1,566,217.50	\$1,932,208.85	\$2,134,785.05	\$1,543,635.58	\$868,531.87
UPLIFT	\$1,439,333.92	\$230,320.06	\$384,970.63	\$612,150.12	\$1,209,760.32	\$238,518.66	\$259,964.90
RESIDUALS	(\$265,622.15)	(\$388,969.20)	(\$315,658.41)	(\$60,691.20)	\$1,193,799.59	\$620,436.55	\$562,973.74
ANCILLARY SERVICES	\$1,380,342.23	\$872,784.03	\$817,962.48	\$823,807.54	\$1,026,376.69	\$719,551.97	\$762,049.07
TCC	\$620,597.82	\$730,886.19	\$1,580,320.37	\$2,396,433.94	\$1,907,528.09	\$2,295,930.81	\$1,013,799.02
	17	18	19	20	21	22	23
ENERGY	\$14,068,708.23	\$15,830,612.02	\$9,649,639.54	\$11,694,551.27	\$9,426,072.19	\$7,681,870.42	\$6,038,862.37
TRANSMISSION SERVICE	\$1,304,986.17	\$3,308,696.32	\$1,535,599.31	\$2,171,518.13	\$1,828,074.44	\$1,146,534.06	\$1,049,769.16
UPLIFT	\$457,109.26	\$2,504,514.46	\$477,188.93	\$252,920.87	\$289,314.67	\$290,745.22	\$259,033.48
RESIDUALS	(\$374,933.86)	\$420,917.77	(\$254,934.26)	(\$354,065.71)	\$7,021.13	\$644,314.00	\$101,915.71
ANCILLARY SERVICES	\$884,777.74	\$918,968.32	\$725,377.49	\$782,455.42	\$794,167.37	\$766,428.83	\$698,529.03
TCC	\$574,516.47	\$3,002,525.91	\$1,770,811.31	\$2,576,911.86	\$2,162,685.41	\$1,529,458.48	\$1,378,487.02
	24	25	26	27	28	29	30
ENERGY	\$9,774,675.89	\$10,079,397.46	\$8,871,286.00	\$9,778,258.11	\$9,329,933.04	\$6,790,334.37	\$6,672,848.20
TRANSMISSION SERVICE	\$3,532,478.49	\$3,126,658.24	\$1,322,494.61	\$4,098,985.26	\$1,399,393.72	\$1,223,808.71	\$789,187.77
UPLIFT	\$241,345.93	\$80,596.00	\$98,549.42	\$139,869.60	\$490,067.52	\$267,164.55	\$126,813.34
RESIDUALS	(\$165,975.29)	(\$3,803.91)	(\$98,749.43)	(\$134,178.61)	(\$104,424.51)	\$285,733.51	\$24,156.18
ANCILLARY SERVICES	\$804,648.06	\$830,897.79	\$795,548.95	\$819,178.45	\$815,585.40	\$740,791.24	\$772,899.35
TCC	\$2,689,988.54	\$2,418,749.73	\$1,272,166.10	\$3,067,868.35	\$391,719.65	\$1,431,478.62	\$546,049.43
	31						
ENERGY	\$10,928,982.47						
TRANSMISSION SERVICE	\$5,849,824.25						
UPLIFT	\$858,861.49						
RESIDUALS	\$779,363.82						
ANCILLARY SERVICES	\$911,386.64						
TCC	\$3,783,817.49						



SETTLEMENTS REPORT
 ATTACHMENT D: JULY 2000 CLOSEOUT SETTLEMENT
 OCTOBER 21, 2005

CLOSEOUT SETTLEMENT MARKET COSTS

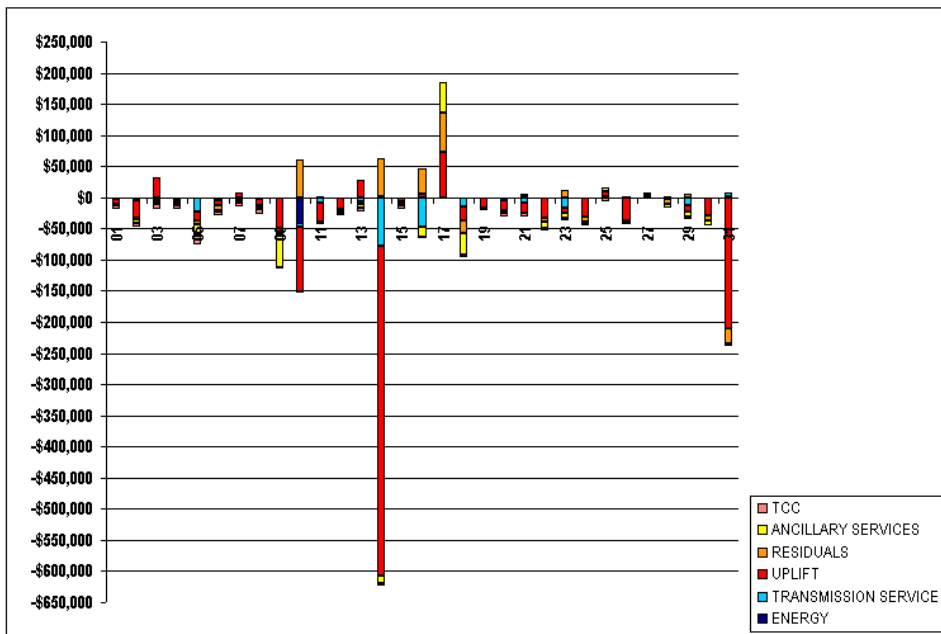
	MONDAY	TUESDAY	WEDNESDAY	THURSDAY	FRIDAY	SATURDAY	SUNDAY
ENERGY						1	2
TRANSMISSION SERVICE						\$9,112,995.53	\$9,463,620.82
UPLIFT						\$1,652,243.96	\$1,625,268.46
RESIDUALS						\$77,143.06	\$243,591.26
ANCILLARY SERVICES						(\$257,087.76)	(\$293,991.64)
TCC						\$707,974.82	\$697,675.56
						\$2,207,604.59	\$2,065,609.17
	3	4	5	6	7	8	9
ENERGY	\$15,044,343.03	\$11,254,301.56	\$23,060,766.30	\$12,759,634.56	\$11,262,099.34	\$7,177,389.77	\$6,695,163.06
TRANSMISSION SERVICE	\$2,749,784.61	\$1,673,556.91	\$4,501,607.05	\$2,504,741.93	\$2,194,797.45	\$1,662,294.68	\$1,134,212.61
UPLIFT	\$810,077.37	\$273,323.51	\$822,840.91	\$275,766.96	\$295,137.89	\$216,737.26	\$151,030.04
RESIDUALS	\$42,904.38	(\$192,851.00)	\$309,978.79	(\$226,779.25)	(\$298,232.11)	(\$359,091.31)	(\$235,306.30)
ANCILLARY SERVICES	\$769,141.54	\$729,106.51	\$1,033,205.61	\$739,787.91	\$754,899.64	\$689,495.14	\$708,523.26
TCC	\$3,339,796.14	\$2,279,974.22	\$5,476,511.54	\$2,905,523.56	\$2,545,237.84	\$2,170,815.18	\$1,373,834.09
	10	11	12	13	14	15	16
ENERGY	\$17,004,958.84	\$11,971,450.90	\$10,096,406.92	\$11,744,934.56	\$10,934,109.12	\$8,267,879.84	\$6,727,984.52
TRANSMISSION SERVICE	\$935,620.72	\$1,108,264.96	\$1,564,893.43	\$1,925,853.10	\$2,056,349.18	\$1,542,527.85	\$822,194.43
UPLIFT	\$1,336,884.05	\$199,763.44	\$367,885.18	\$639,148.86	\$681,526.65	\$232,334.49	\$265,339.54
RESIDUALS	(\$204,247.56)	(\$388,296.33)	(\$318,593.95)	(\$64,304.16)	\$1,255,302.77	\$617,010.95	\$604,501.43
ANCILLARY SERVICES	\$1,378,447.44	\$870,652.76	\$814,259.22	\$817,520.40	\$1,013,788.69	\$718,603.57	\$745,510.84
TCC	\$618,985.54	\$728,477.39	\$1,575,960.69	\$2,390,184.71	\$1,903,349.05	\$2,288,461.10	\$1,012,171.48
	17	18	19	20	21	22	23
ENERGY	\$14,068,742.07	\$15,830,865.63	\$9,649,844.79	\$11,689,809.29	\$9,426,001.51	\$7,681,540.70	\$6,038,545.31
TRANSMISSION SERVICE	\$1,302,586.21	\$3,294,651.21	\$1,534,594.58	\$2,171,180.36	\$1,819,482.43	\$1,145,667.60	\$1,034,034.48
UPLIFT	\$629,946.39	\$2,480,549.50	\$461,676.30	\$238,063.80	\$273,860.75	\$259,247.10	\$250,530.65
RESIDUALS	(\$311,491.20)	\$400,677.71	(\$257,344.78)	(\$355,766.05)	\$11,461.08	\$638,652.19	\$112,732.35
ANCILLARY SERVICES	\$933,510.32	\$884,403.06	\$724,984.35	\$780,145.14	\$795,145.52	\$755,023.42	\$690,108.89
TCC	\$574,516.47	\$2,999,882.77	\$1,769,933.13	\$2,569,937.31	\$2,156,164.39	\$1,525,782.79	\$1,373,588.06
	24	25	26	27	28	29	30
ENERGY	\$9,774,956.81	\$10,081,308.30	\$8,871,766.41	\$9,778,740.43	\$9,330,771.82	\$6,790,284.23	\$6,673,046.48
TRANSMISSION SERVICE	\$3,532,352.05	\$3,136,219.18	\$1,321,075.24	\$4,099,997.66	\$1,399,198.93	\$1,211,670.98	\$789,457.62
UPLIFT	\$210,606.83	\$88,934.01	\$62,695.90	\$143,320.32	\$487,053.45	\$255,948.99	\$98,038.69
RESIDUALS	(\$175,066.54)	(\$9,368.59)	(\$101,693.64)	(\$135,803.49)	(\$111,468.05)	\$291,317.93	\$16,328.74
ANCILLARY SERVICES	\$802,093.48	\$835,783.54	\$793,417.93	\$819,080.99	\$808,721.69	\$733,369.95	\$764,726.62
TCC	\$2,688,046.13	\$2,417,838.52	\$1,272,659.63	\$3,069,855.93	\$391,664.48	\$1,428,039.71	\$544,595.25
	31						
ENERGY	\$10,929,793.05						
TRANSMISSION SERVICE	\$5,855,769.80						
UPLIFT	\$647,734.03						
RESIDUALS	\$755,986.28						
ANCILLARY SERVICES	\$910,247.82						
TCC	\$3,781,185.25						



SETTLEMENTS REPORT
 ATTACHMENT D: JULY 2000 CLOSEOUT SETTLEMENT
 OCTOBER 21, 2005

CLOSEOUT SETTLEMENT MARKET COSTS DELTA

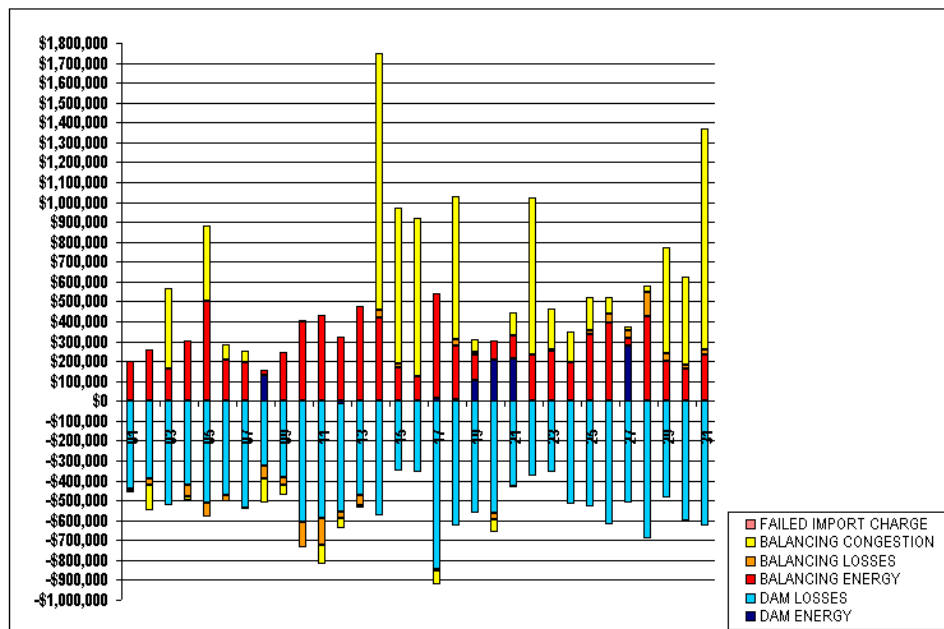
	MONDAY	TUESDAY	WEDNESDAY	THURSDAY	FRIDAY	SATURDAY	SUNDAY
ENERGY						1	2
TRANSMISSION SERVICE						(\$77.18)	(\$74.70)
UPLIFT						(\$1,710.90)	(\$5,306.72)
RESIDUALS						(\$8,447.85)	(\$28,409.64)
ANCILLARY SERVICES						(\$368.40)	(\$936.08)
TCC						(\$1,063.05)	(\$5,638.14)
						(\$6,696.81)	(\$6,622.03)
	3	4	5	6	7	8	9
ENERGY	(\$427.18)	(\$216.73)	\$56.03	(\$110.78)	(\$81.02)	(\$519.52)	(\$45.01)
TRANSMISSION SERVICE	(\$3,958.65)	(\$1,615.58)	(\$22,453.35)	(\$4,583.02)	(\$3,209.21)	(\$1,663.29)	(\$878.66)
UPLIFT	\$32,474.94	(\$4,717.11)	(\$14,757.02)	(\$8,926.95)	\$6,957.50	(\$11,497.04)	(\$55,839.33)
RESIDUALS	(\$1,761.07)	(\$4,590.48)	(\$6,207.19)	(\$7,253.33)	(\$3,285.14)	(\$1,284.36)	(\$4,116.58)
ANCILLARY SERVICES	(\$3,815.31)	(\$583.65)	(\$14,507.60)	(\$1,306.46)	(\$2,293.27)	(\$4,202.71)	(\$51,174.48)
TCC	(\$8,839.38)	(\$6,110.09)	(\$16,940.29)	(\$7,877.01)	(\$6,501.70)	(\$6,910.92)	(\$3,442.06)
	10	11	12	13	14	15	16
ENERGY	(\$41,056.60)	(\$72.87)	\$106.86	\$100.52	\$575.00	(\$252.62)	(\$591.16)
TRANSMISSION SERVICE	(\$6,665.45)	(\$8,124.17)	(\$1,324.07)	(\$6,355.75)	(\$78,435.87)	(\$1,107.73)	(\$46,337.44)
UPLIFT	(\$102,449.87)	(\$30,556.62)	(\$17,085.45)	\$26,998.74	(\$528,233.67)	(\$6,184.17)	\$5,375.24
RESIDUALS	\$61,374.59	\$672.87	(\$2,935.54)	(\$3,612.96)	\$61,503.18	(\$3,425.60)	\$41,527.69
ANCILLARY SERVICES	(\$1,894.79)	(\$2,131.27)	(\$3,703.26)	(\$6,287.14)	(\$12,588.00)	(\$948.40)	(\$16,538.23)
TCC	(\$1,612.28)	(\$2,408.80)	(\$4,359.68)	(\$6,249.23)	(\$4,179.04)	(\$7,469.71)	(\$1,627.54)
	17	18	19	20	21	22	23
ENERGY	\$33.84	\$253.61	\$205.25	(\$4,741.98)	(\$70.68)	(\$329.72)	(\$317.06)
TRANSMISSION SERVICE	(\$2,399.96)	(\$14,045.11)	(\$1,004.73)	(\$337.77)	(\$8,592.01)	(\$866.46)	(\$15,734.68)
UPLIFT	\$72,837.13	(\$23,964.96)	(\$15,512.63)	(\$14,857.07)	(\$15,453.92)	(\$31,498.12)	(\$8,502.83)
RESIDUALS	\$63,442.66	(\$20,240.06)	(\$2,410.52)	(\$1,700.34)	\$4,439.95	(\$5,661.81)	\$10,816.64
ANCILLARY SERVICES	\$48,732.58	(\$34,566.26)	(\$393.14)	(\$2,310.28)	\$978.15	(\$11,405.41)	(\$8,420.14)
TCC	\$0.00	(\$2,643.14)	(\$878.18)	(\$6,974.55)	(\$6,521.02)	(\$3,675.69)	(\$4,898.96)
	24	25	26	27	28	29	30
ENERGY	\$280.92	\$1,910.84	\$480.41	\$482.32	\$838.78	(\$50.14)	\$198.28
TRANSMISSION SERVICE	(\$126.44)	(\$439.06)	(\$1,419.37)	\$1,012.40	(\$194.79)	(\$12,137.73)	\$269.85
UPLIFT	(\$30,739.10)	\$8,338.01	(\$35,853.52)	\$3,450.72	(\$3,014.07)	(\$11,215.56)	(\$28,774.65)
RESIDUALS	(\$9,091.25)	(\$5,564.68)	(\$2,944.21)	(\$1,624.88)	(\$7,043.54)	\$5,584.42	(\$7,827.44)
ANCILLARY SERVICES	(\$2,554.58)	\$4,885.75	(\$2,131.02)	(\$97.46)	(\$6,863.71)	(\$7,421.29)	(\$8,172.73)
TCC	(\$1,942.41)	(\$911.21)	\$493.53	\$1,987.58	(\$55.07)	(\$3,438.91)	(\$1,454.18)
	31						
ENERGY	\$810.58						
TRANSMISSION SERVICE	\$5,945.55						
UPLIFT	(\$211,127.46)						
RESIDUALS	(\$23,377.54)						
ANCILLARY SERVICES	(\$1,138.82)						
TCC	(\$2,632.24)						



SETTLEMENTS REPORT
ATTACHMENT D: JULY 2000 CLOSEOUT SETTLEMENT
OCTOBER 21, 2005

24-MONTH SETTLEMENT ADJUSTMENT MARKET RESIDUALS

	MONDAY	TUESDAY	WEDNESDAY	THURSDAY	FRIDAY	SATURDAY	SUNDAY
						1	2
DAM ENERGY						\$332.34	\$812.16
DAM LOSSES						(\$442,959.23)	(\$389,364.38)
BALANCING ENERGY						\$200,616.96	\$257,096.72
BALANCING LOSSES						(\$10,181.33)	(\$34,864.42)
BALANCING CONGESTION						(\$4,942.59)	(\$128,168.26)
FAILED IMPORT CHARGE						\$0.00	\$0.00
	3	4	5	6	7	8	9
DAM ENERGY	\$1,979.01	\$876.35	\$1,617.63	\$2,324.97	\$1,493.85	\$129,949.09	\$386.82
DAM LOSSES	(\$527,822.24)	(\$424,834.34)	(\$511,075.17)	(\$470,944.87)	(\$535,503.93)	(\$327,709.86)	(\$381,794.25)
BALANCING ENERGY	\$162,174.68	\$306,001.41	\$503,383.11	\$202,084.21	\$194,025.94	\$23,956.68	\$243,169.35
BALANCING LOSSES	\$454.58	(\$53,511.85)	(\$70,440.78)	(\$35,066.17)	(\$11,088.32)	(\$50,508.88)	(\$42,779.98)
BALANCING CONGESTION	\$405,177.15	(\$18,067.16)	\$373,959.01	\$78,898.67	\$55,378.43	(\$124,204.28)	(\$51,709.61)
FAILED IMPORT CHARGE	\$0.00	\$0.00	\$0.00	\$0.00	\$0.00	\$0.00	\$0.00
	10	11	12	13	14	15	16
DAM ENERGY	\$4,966.54	\$1,794.94	(\$12,625.25)	\$2,538.73	\$4,293.30	\$1,445.75	\$127.72
DAM LOSSES	(\$610,156.03)	(\$587,143.58)	(\$541,110.05)	(\$471,476.83)	(\$574,668.35)	(\$352,276.68)	(\$355,155.80)
BALANCING ENERGY	\$396,087.07	\$429,963.04	\$322,389.43	\$472,929.85	\$415,179.32	\$170,431.70	\$120,847.19
BALANCING LOSSES	(\$123,681.42)	(\$136,253.39)	(\$32,790.92)	(\$54,001.64)	\$38,980.34	\$18,754.61	(\$5,243.05)
BALANCING CONGESTION	\$3,558.22	(\$99,917.65)	(\$54,443.41)	(\$13,171.68)	\$1,291,327.00	\$780,071.25	\$802,085.64
FAILED IMPORT CHARGE	\$0.00	\$0.00	\$0.00	\$0.00	\$0.00	\$0.00	\$0.00
	17	18	19	20	21	22	23
DAM ENERGY	\$17,427.79	\$8,735.52	\$101,724.91	\$206,448.88	\$214,387.01	\$1,329.56	\$371.18
DAM LOSSES	(\$847,140.49)	(\$626,217.85)	(\$565,088.74)	(\$565,110.94)	(\$428,093.45)	(\$376,835.11)	(\$359,770.32)
BALANCING ENERGY	\$524,402.88	\$272,087.42	\$133,451.34	\$96,458.18	\$114,931.82	\$228,881.65	\$253,766.30
BALANCING LOSSES	(\$7,483.94)	\$32,154.57	\$10,878.43	(\$28,230.32)	(\$8,456.95)	\$1,935.17	\$3,486.44
BALANCING CONGESTION	(\$68,578.69)	\$713,742.58	\$63,389.71	(\$65,845.56)	\$113,183.32	\$788,336.70	\$203,857.81
FAILED IMPORT CHARGE	\$0.00	\$0.00	\$0.00	\$0.00	\$0.00	\$0.00	\$0.00
	24	25	26	27	28	29	30
DAM ENERGY	\$1,381.58	\$977.18	\$907.73	\$279,064.90	\$955.94	\$1,659.71	\$1,614.44
DAM LOSSES	(\$516,792.82)	(\$529,485.02)	(\$620,186.31)	(\$511,166.76)	(\$689,990.50)	(\$488,813.06)	(\$598,764.75)
BALANCING ENERGY	\$195,404.21	\$335,901.86	\$389,600.58	\$38,461.80	\$427,485.87	\$198,745.15	\$158,889.09
BALANCING LOSSES	(\$941.38)	\$19,226.98	\$49,890.99	\$36,806.50	\$121,783.14	\$35,942.05	\$20,817.33
BALANCING CONGESTION	\$153,927.44	\$168,769.41	\$80,142.55	\$21,297.05	\$32,707.05	\$537,739.96	\$441,169.51
FAILED IMPORT CHARGE	\$0.00	\$0.00	\$0.00	\$0.00	\$0.00	\$0.00	\$0.00
	31						
DAM ENERGY	\$1,319.43						
DAM LOSSES	(\$630,204.11)						
BALANCING ENERGY	\$228,586.49						
BALANCING LOSSES	\$27,869.87						
BALANCING CONGESTION	\$1,114,009.22						
FAILED IMPORT CHARGE	\$0.00						

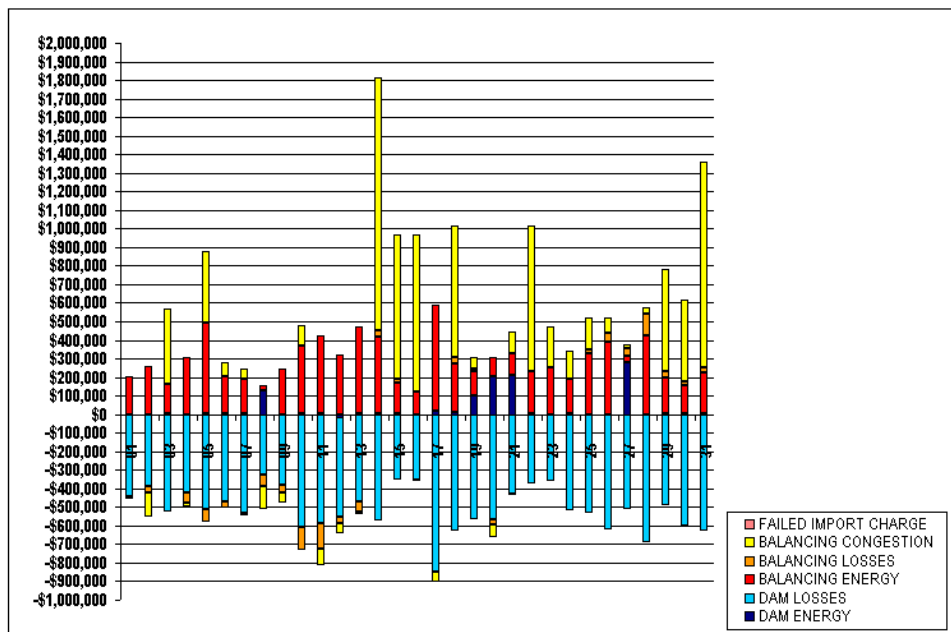


FOR DISCUSSION PURPOSES ONLY

SETTLEMENTS REPORT
 ATTACHMENT D: JULY 2000 CLOSEOUT SETTLEMENT
 OCTOBER 21, 2005

CLOSEOUT SETTLEMENT MARKET RESIDUALS ANALYSIS

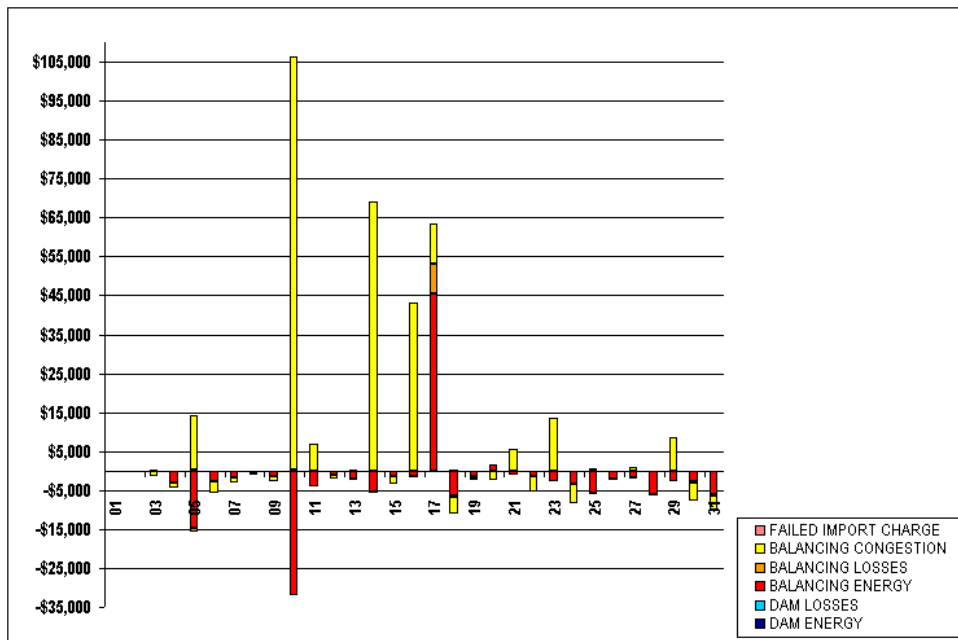
	MONDAY	TUESDAY	WEDNESDAY	THURSDAY	FRIDAY	SATURDAY	SUNDAY
DAM ENERGY						1	2
DAM LOSSES						\$332.34	\$812.16
BALANCING ENERGY						(\$442,959.23)	(\$389,364.38)
BALANCING LOSSES						\$200,430.78	\$256,997.06
BALANCING CONGESTION						(\$10,196.34)	(\$34,884.78)
FAILED IMPORT CHARGE						(\$5,089.65)	(\$128,401.07)
						\$0.00	\$0.00
DAM ENERGY	3	4	5	6	7	8	9
DAM LOSSES	\$1,979.01	\$876.35	\$1,617.63	\$2,324.97	\$1,493.85	\$129,949.09	\$386.82
BALANCING ENERGY	(\$527,822.24)	(\$424,834.34)	(\$510,964.95)	(\$470,944.87)	(\$535,503.93)	(\$327,709.86)	(\$381,784.25)
BALANCING LOSSES	\$162,583.17	\$303,047.50	\$488,732.77	\$199,454.90	\$192,305.25	\$23,251.78	\$241,748.21
BALANCING CONGESTION	\$332.02	(\$53,763.78)	(\$71,468.76)	(\$35,308.48)	(\$11,243.73)	(\$50,609.09)	(\$42,885.17)
FAILED IMPORT CHARGE	\$403,802.38	(\$19,190.27)	\$388,003.24	\$76,095.82	\$54,097.81	(\$124,444.96)	(\$53,019.42)
	\$0.00	\$0.00	\$0.00	\$0.00	\$0.00	\$0.00	\$0.00
DAM ENERGY	10	11	12	13	14	15	16
DAM LOSSES	\$4,966.54	\$1,794.94	(\$12,625.25)	\$2,538.73	\$4,293.30	\$1,445.75	\$127.72
BALANCING ENERGY	(\$610,156.03)	(\$587,143.58)	(\$541,110.05)	(\$471,476.83)	(\$574,668.35)	(\$352,276.68)	(\$355,155.80)
BALANCING LOSSES	\$364,001.61	\$425,901.57	\$321,245.09	\$470,721.67	\$409,853.52	\$169,098.31	\$119,371.67
BALANCING CONGESTION	(\$123,447.37)	(\$136,337.34)	(\$32,876.74)	(\$54,158.87)	\$38,725.59	\$18,683.09	(\$5,365.39)
FAILED IMPORT CHARGE	\$109,679.17	(\$93,056.55)	(\$55,428.68)	(\$13,005.70)	\$1,360,487.89	\$778,110.04	\$845,131.89
	\$0.00	\$0.00	\$0.00	\$0.00	\$0.00	\$0.00	\$0.00
DAM ENERGY	17	18	19	20	21	22	23
DAM LOSSES	\$17,427.79	\$8,735.52	\$101,724.91	\$206,449.37	\$214,387.64	\$1,329.62	\$371.20
BALANCING ENERGY	(\$847,140.49)	(\$626,087.13)	(\$565,088.74)	(\$565,113.00)	(\$428,095.05)	(\$376,850.60)	(\$359,786.78)
BALANCING LOSSES	\$569,760.02	\$265,754.11	\$131,976.73	\$98,081.46	\$113,917.36	\$227,403.08	\$251,170.83
BALANCING CONGESTION	\$176.94	\$31,920.11	\$10,762.53	(\$28,393.32)	(\$8,563.65)	\$1,926.99	\$3,321.94
FAILED IMPORT CHARGE	(\$58,181.89)	\$709,289.37	\$62,677.26	(\$67,998.45)	\$118,843.14	\$784,556.51	\$217,577.55
	\$0.00	\$0.00	\$0.00	\$0.00	\$0.00	\$0.00	\$0.00
DAM ENERGY	24	25	26	27	28	29	30
DAM LOSSES	\$1,381.58	\$977.18	\$907.73	\$279,065.38	\$955.94	\$1,659.78	\$1,614.52
BALANCING ENERGY	(\$516,792.82)	(\$529,485.02)	(\$620,185.63)	(\$511,167.97)	(\$689,990.50)	(\$488,832.05)	(\$598,791.36)
BALANCING LOSSES	\$191,922.03	\$330,152.44	\$387,661.57	\$36,612.38	\$421,323.30	\$196,121.22	\$156,034.89
BALANCING CONGESTION	(\$1,006.53)	\$18,879.95	\$49,785.98	\$36,701.00	\$121,525.64	\$35,783.73	\$20,727.41
FAILED IMPORT CHARGE	\$149,007.06	\$169,462.11	\$79,874.32	\$22,108.64	\$32,703.66	\$546,332.79	\$436,447.71
	\$0.00	\$0.00	\$0.00	\$0.00	\$0.00	\$0.00	\$0.00
DAM ENERGY	31						
DAM LOSSES	\$1,319.43						
BALANCING ENERGY	(\$630,304.11)						
BALANCING LOSSES	\$222,598.77						
BALANCING CONGESTION	\$27,559.94						
FAILED IMPORT CHARGE	\$1,110,252.93						
	\$0.00						



SETTLEMENTS REPORT
 ATTACHMENT D: JULY 2000 CLOSEOUT SETTLEMENT
 OCTOBER 21, 2005

CLOSEOUT SETTLEMENT MARKET RESIDUALS DELTA ANALYSIS

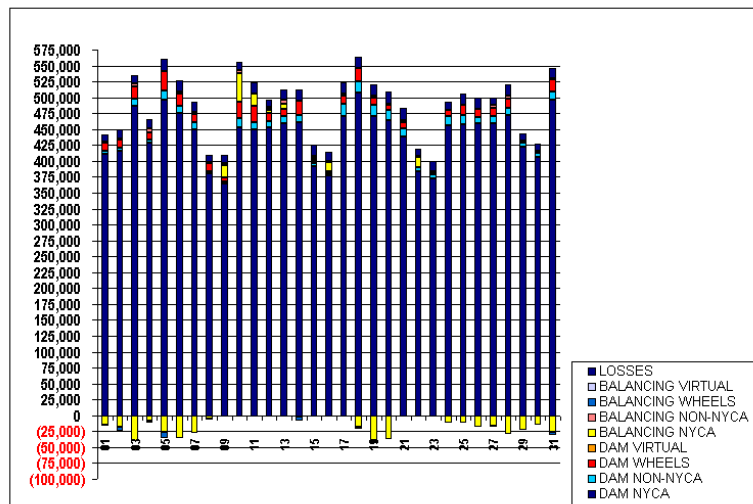
	MONDAY	TUESDAY	WEDNESDAY	THURSDAY	FRIDAY	SATURDAY	SUNDAY
						1	2
DAM ENERGY						\$0.00	\$0.00
DAM LOSSES						\$0.00	\$0.00
BALANCING ENERGY						(\$85.18)	(\$99.66)
BALANCING LOSSES						(\$15.01)	(\$20.36)
BALANCING CONGESTION						(\$147.06)	(\$232.31)
FAILED IMPORT CHARGE						\$0.00	\$0.00
	3	4	5	6	7	8	9
DAM ENERGY	\$0.00	\$0.00	\$0.00	\$0.00	\$0.00	\$0.00	\$0.00
DAM LOSSES	\$0.00	\$0.00	\$110.22	\$0.00	\$0.00	\$0.00	\$0.00
BALANCING ENERGY	\$408.49	(\$2,953.91)	(\$14,650.34)	(\$2,629.31)	(\$1,720.69)	(\$703.90)	(\$1,421.14)
BALANCING LOSSES	(\$122.56)	(\$261.93)	(\$1,027.98)	(\$242.31)	(\$155.41)	(\$100.21)	(\$106.19)
BALANCING CONGESTION	(\$1,374.77)	(\$1,123.11)	\$14,044.23	(\$2,802.85)	(\$1,280.62)	(\$240.68)	(\$1,309.81)
FAILED IMPORT CHARGE	\$0.00	\$0.00	\$0.00	\$0.00	\$0.00	\$0.00	\$0.00
	10	11	12	13	14	15	16
DAM ENERGY	\$0.00	\$0.00	\$0.00	\$0.00	\$0.00	\$0.00	\$0.00
DAM LOSSES	\$0.00	\$0.00	\$0.00	\$0.00	\$0.00	\$0.00	\$0.00
BALANCING ENERGY	(\$32,085.46)	(\$4,061.47)	(\$1,144.34)	(\$2,208.18)	(\$5,325.80)	(\$1,333.39)	(\$1,475.52)
BALANCING LOSSES	\$234.05	(\$83.95)	(\$85.32)	(\$157.23)	(\$254.75)	(\$71.52)	(\$122.34)
BALANCING CONGESTION	\$106,120.95	\$6,861.10	(\$985.27)	\$165.98	\$69,160.99	(\$1,961.21)	\$43,046.25
FAILED IMPORT CHARGE	\$0.00	\$0.00	\$0.00	\$0.00	\$0.00	\$0.00	\$0.00
	17	18	19	20	21	22	23
DAM ENERGY	\$0.00	\$0.00	\$0.00	\$0.49	\$0.63	\$0.06	\$0.02
DAM LOSSES	\$0.00	\$130.72	\$0.00	(\$2.06)	(\$1.60)	(\$15.49)	(\$16.46)
BALANCING ENERGY	\$45,357.14	(\$6,333.31)	(\$1,474.61)	\$1,623.28	(\$1,014.46)	(\$1,478.57)	(\$2,595.47)
BALANCING LOSSES	\$7,660.88	(\$234.46)	(\$115.90)	(\$163.00)	(\$106.70)	(\$8.18)	(\$164.50)
BALANCING CONGESTION	\$10,396.80	(\$4,453.21)	(\$712.45)	(\$2,152.89)	\$5,659.82	(\$3,780.19)	\$13,719.74
FAILED IMPORT CHARGE	\$0.00	\$0.00	\$0.00	\$0.00	\$0.00	\$0.00	\$0.00
	24	25	26	27	28	29	30
DAM ENERGY	\$0.00	\$0.00	\$0.00	\$0.48	\$0.00	\$0.07	\$0.08
DAM LOSSES	\$0.00	\$0.00	\$0.68	(\$1.21)	\$0.00	(\$18.99)	(\$26.61)
BALANCING ENERGY	(\$3,482.18)	(\$5,749.42)	(\$1,933.01)	(\$1,849.42)	(\$5,162.57)	(\$2,623.93)	(\$2,854.20)
BALANCING LOSSES	(\$65.15)	(\$347.03)	(\$105.01)	(\$105.50)	(\$257.50)	(\$158.32)	(\$89.92)
BALANCING CONGESTION	(\$4,920.38)	\$692.70	(\$268.23)	\$811.59	(\$3.39)	\$8,592.83	(\$4,721.80)
FAILED IMPORT CHARGE	\$0.00	\$0.00	\$0.00	\$0.00	\$0.00	\$0.00	\$0.00
	31						
DAM ENERGY	\$0.00						
DAM LOSSES	\$0.00						
BALANCING ENERGY	(\$5,987.72)						
BALANCING LOSSES	(\$309.93)						
BALANCING CONGESTION	(\$3,756.29)						
FAILED IMPORT CHARGE	\$0.00						



SETTLEMENTS REPORT
 ATTACHMENT D: JULY 2000 CLOSEOUT SETTLEMENT
 OCTOBER 21, 2005

24-MONTH SETTLEMENT ADJUSTMENT MARKET WITHDRAWALS ANALYSIS

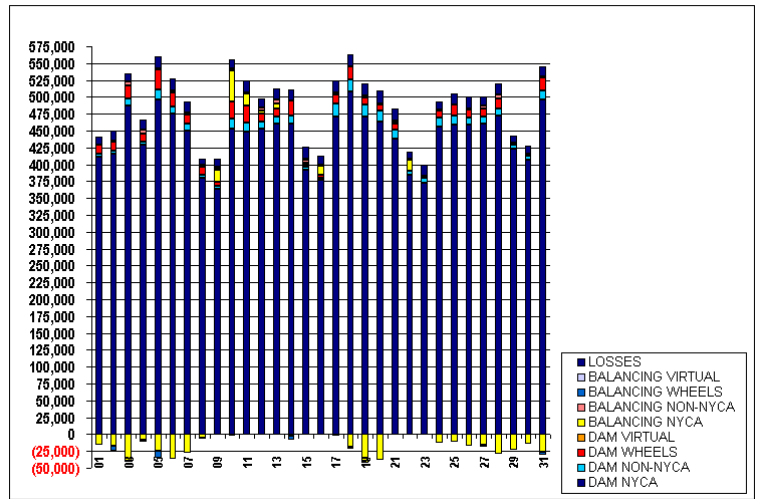
	MONDAY	TUESDAY	WEDNESDAY	THURSDAY	FRIDAY	SATURDAY	SUNDAY
DAM NYCA						410,857	416,112
DAM NON-NYCA						4,877	4,775
DAM WHEELS						12,936	13,396
DAM VIRTUAL						0	0
BALANCING NYCA						(15,603)	(17,291)
BALANCING NON-NYCA						1,014	685
BALANCING WHEELS						(402)	(7,439)
BALANCING VIRTUAL						0	0
LOSSES						11,333	14,965
	3	4	5	6	7	8	9
DAM NYCA	486,531	428,920	496,256	475,184	450,086	380,613	364,383
DAM NON-NYCA	10,710	4,036	14,638	10,684	10,644	3,769	3,642
DAM WHEELS	19,920	12,542	29,724	20,140	12,864	11,653	6,352
DAM VIRTUAL	0	0	0	0	0	0	0
BALANCING NYCA	(40,036)	(8,875)	(25,336)	(36,196)	(27,665)	(4,960)	18,302
BALANCING NON-NYCA	5,196	6,384	1,029	1,225	1,550	2,939	2,234
BALANCING WHEELS	(723)	(2,772)	(9,893)	1,666	1,300	(1,945)	1,446
BALANCING VIRTUAL	0	0	0	0	0	0	0
LOSSES	12,604	13,871	19,237	18,168	16,924	9,728	12,265
	10	11	12	13	14	15	16
DAM NYCA	452,250	448,948	452,394	459,875	460,960	392,424	377,008
DAM NON-NYCA	15,608	12,717	10,289	10,359	11,921	3,741	3,668
DAM WHEELS	25,732	25,110	11,964	12,064	21,758	3,152	3,152
DAM VIRTUAL	0	0	0	0	0	0	0
BALANCING NYCA	45,251	18,963	5,106	7,493	(2,850)	3,637	13,736
BALANCING NON-NYCA	3,318	475	4,064	6,190	612	3,349	1,604
BALANCING WHEELS	(2,624)	(1,562)	857	(403)	(6,336)	2,050	0
BALANCING VIRTUAL	0	0	0	0	0	0	0
LOSSES	13,264	17,575	12,270	17,123	16,573	17,488	14,387
	17	18	19	20	21	22	23
DAM NYCA	470,601	507,531	471,055	464,084	438,474	383,990	373,003
DAM NON-NYCA	19,214	17,925	17,643	15,614	12,677	6,599	6,499
DAM WHEELS	13,636	20,230	10,548	9,088	9,088	320	320
DAM VIRTUAL	0	0	0	0	0	0	0
BALANCING NYCA	2,447	(18,461)	(42,127)	(37,647)	1,292	15,222	2,481
BALANCING NON-NYCA	(1,637)	(1,535)	3,236	985	2,781	1,333	1,440
BALANCING WHEELS	365	(1,898)	(946)	100	(416)	219	0
BALANCING VIRTUAL	0	0	0	0	0	0	0
LOSSES	17,756	17,786	18,188	19,276	19,141	10,794	16,144
	24	25	26	27	28	29	30
DAM NYCA	456,227	458,460	458,550	459,887	471,806	422,822	406,120
DAM NON-NYCA	13,642	13,258	11,049	11,116	11,079	6,599	6,524
DAM WHEELS	10,268	16,668	12,368	12,068	14,768	320	320
DAM VIRTUAL	0	0	0	0	0	0	0
BALANCING NYCA	(12,139)	(11,131)	(17,831)	(16,207)	(28,951)	(22,796)	(15,015)
BALANCING NON-NYCA	455	(124)	312	4,865	5,446	2,243	2,150
BALANCING WHEELS	250	(296)	(177)	(2,211)	(6)	168	0
BALANCING VIRTUAL	0	0	0	0	0	0	0
LOSSES	12,164	16,759	17,852	12,064	16,992	11,182	12,406
	31						
DAM NYCA	496,078						
DAM NON-NYCA	13,391						
DAM WHEELS	19,278						
DAM VIRTUAL	0						
BALANCING NYCA	(26,245)						
BALANCING NON-NYCA	1,778						
BALANCING WHEELS	(4,620)						
BALANCING VIRTUAL	0						
LOSSES	15,116						



SETTLEMENTS REPORT
 ATTACHMENT D: JULY 2000 CLOSEOUT SETTLEMENT
 OCTOBER 21, 2005

CLOSEOUT SETTLEMENT MARKET WITHDRAWALS ANALYSIS

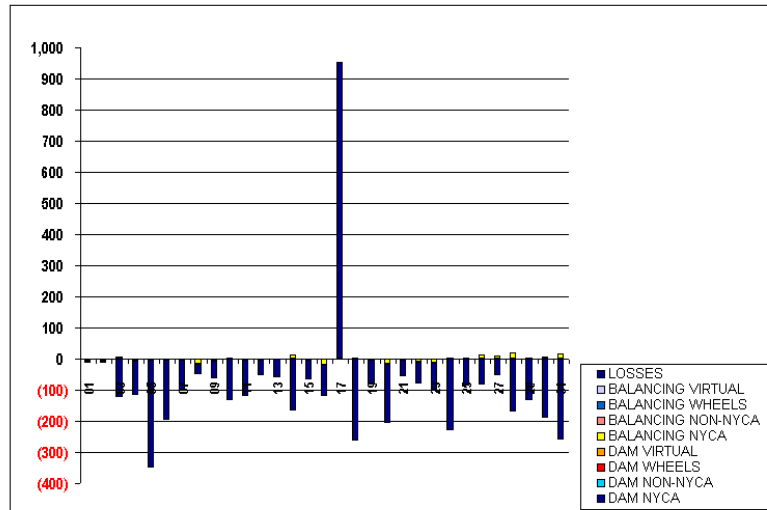
	MONDAY	TUESDAY	WEDNESDAY	THURSDAY	FRIDAY	SATURDAY	SUNDAY
						1	2
DAM NYCA						410,857	416,112
DAM NON-NYCA						4,877	4,775
DAM WHEELS						12,936	13,396
DAM VIRTUAL						0	0
BALANCING NYCA						(15,609)	(17,298)
BALANCING NON-NYCA						1,014	686
BALANCING WHEELS						(402)	(7,439)
BALANCING VIRTUAL						0	0
LOSSES						11,326	14,960
	3	4	5	6	7	8	9
DAM NYCA	496,531	428,920	496,256	475,184	450,086	380,613	364,383
DAM NON-NYCA	10,710	4,036	14,638	10,684	10,644	3,768	3,642
DAM WHEELS	19,820	12,642	29,724	20,140	12,864	11,663	6,852
DAM VIRTUAL	0	0	0	0	0	0	0
BALANCING NYCA	(40,029)	(8,881)	(25,339)	(36,200)	(27,563)	(4,966)	18,293
BALANCING NON-NYCA	5,196	6,384	1,029	1,225	1,650	2,939	2,234
BALANCING WHEELS	(723)	(2,772)	(9,893)	1,566	1,200	(1,945)	1,446
BALANCING VIRTUAL	0	0	0	0	0	0	0
LOSSES	12,483	13,760	18,889	17,974	16,823	9,695	12,310
	10	11	12	13	14	15	16
DAM NYCA	452,250	448,948	452,394	459,875	460,960	392,424	377,008
DAM NON-NYCA	15,508	12,717	10,289	10,359	11,821	3,741	3,668
DAM WHEELS	25,732	25,110	11,964	12,064	21,768	3,152	3,152
DAM VIRTUAL	0	0	0	0	0	0	0
BALANCING NYCA	46,253	18,959	5,103	7,493	(2,638)	3,634	13,715
BALANCING NON-NYCA	3,318	475	4,064	6,190	612	3,349	1,604
BALANCING WHEELS	(2,624)	(1,562)	857	(403)	(6,336)	2,050	0
BALANCING VIRTUAL	0	0	0	0	0	0	0
LOSSES	13,130	17,460	12,221	17,063	16,406	17,424	14,290
	17	18	19	20	21	22	23
DAM NYCA	470,601	507,531	471,056	464,084	438,474	383,990	373,003
DAM NON-NYCA	19,214	17,925	17,643	15,614	12,677	6,599	6,499
DAM WHEELS	13,536	20,230	10,548	9,088	9,088	320	320
DAM VIRTUAL	0	0	0	0	0	0	0
BALANCING NYCA	2,445	(18,459)	(42,129)	(37,663)	1,290	15,212	2,468
BALANCING NON-NYCA	(1,637)	(1,635)	3,236	985	2,781	1,333	1,440
BALANCING WHEELS	365	(1,899)	(945)	100	(415)	219	0
BALANCING VIRTUAL	0	0	0	0	0	0	0
LOSSES	18,711	17,522	18,106	19,084	19,087	10,725	16,057
	24	25	26	27	28	29	30
DAM NYCA	456,227	458,460	458,550	459,887	471,806	422,822	406,120
DAM NON-NYCA	13,642	13,258	11,049	11,116	11,079	6,599	6,524
DAM WHEELS	10,268	16,668	12,368	12,068	14,768	320	320
DAM VIRTUAL	0	0	0	0	0	0	0
BALANCING NYCA	(12,135)	(11,177)	(17,820)	(16,199)	(25,351)	(22,792)	(15,011)
BALANCING NON-NYCA	455	(124)	312	4,865	5,446	2,243	2,150
BALANCING WHEELS	250	(296)	(177)	(2,211)	(6)	168	0
BALANCING VIRTUAL	0	0	0	0	0	0	0
LOSSES	11,834	16,673	17,769	12,010	16,824	11,047	12,217
	31						
DAM NYCA	496,078						
DAM NON-NYCA	13,391						
DAM WHEELS	19,278						
DAM VIRTUAL	0						
BALANCING NYCA	(26,228)						
BALANCING NON-NYCA	1,778						
BALANCING WHEELS	(4,620)						
BALANCING VIRTUAL	0						
LOSSES	14,853						



SETTLEMENTS REPORT
 ATTACHMENT D: JULY 2000 CLOSEOUT SETTLEMENT
 OCTOBER 21, 2005

CLOSEOUT SETTLEMENT MARKET WITHDRAWALS DELTA ANALYSIS

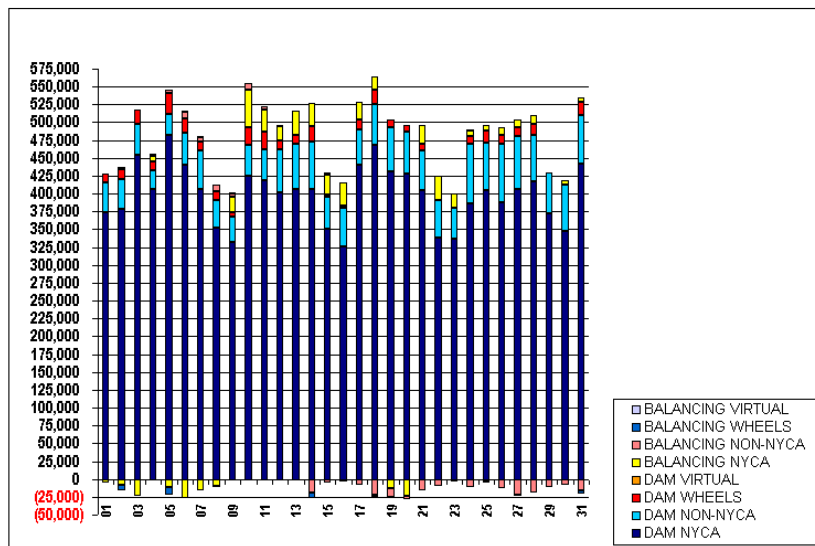
	MONDAY	TUESDAY	WEDNESDAY	THURSDAY	FRIDAY	SATURDAY	SUNDAY
						1	2
DAM NYCA						0	0
DAM NON-NYCA						0	0
DAM WHEELS						0	0
DAM VIRTUAL						0	0
BALANCING NYCA						(5)	(6)
BALANCING NON-NYCA						0	0
BALANCING WHEELS						0	0
BALANCING VIRTUAL						0	0
LOSSES						(7)	(6)
	3	4	5	6	7	8	9
DAM NYCA	0	0	0	0	0	0	0
DAM NON-NYCA	0	0	0	0	0	0	0
DAM WHEELS	0	0	0	0	0	0	0
DAM VIRTUAL	0	0	0	0	0	0	0
BALANCING NYCA	7	(6)	(3)	(4)	(3)	(16)	(8)
BALANCING NON-NYCA	0	0	0	0	0	0	0
BALANCING WHEELS	0	0	0	0	0	0	0
BALANCING VIRTUAL	0	0	0	0	0	0	0
LOSSES	(122)	(111)	(247)	(194)	(101)	(32)	(65)
	10	11	12	13	14	15	16
DAM NYCA	0	0	0	0	0	0	0
DAM NON-NYCA	0	0	0	0	0	0	0
DAM WHEELS	0	0	0	0	0	0	0
DAM VIRTUAL	0	0	0	0	0	0	0
BALANCING NYCA	3	(4)	(3)	(1)	12	(4)	(21)
BALANCING NON-NYCA	0	0	0	0	0	0	0
BALANCING WHEELS	0	0	0	0	0	0	0
BALANCING VIRTUAL	0	0	0	0	0	0	0
LOSSES	(134)	(116)	(49)	(60)	(163)	(64)	(97)
	17	18	19	20	21	22	23
DAM NYCA	0	0	0	0	0	0	0
DAM NON-NYCA	0	0	0	0	0	0	0
DAM WHEELS	0	0	0	0	0	0	0
DAM VIRTUAL	0	0	0	0	0	0	0
BALANCING NYCA	(2)	2	(2)	(15)	(2)	(10)	(14)
BALANCING NON-NYCA	0	0	0	0	0	0	0
BALANCING WHEELS	0	0	0	0	0	0	0
BALANCING VIRTUAL	0	0	0	0	0	0	0
LOSSES	956	(263)	(81)	(192)	(64)	(69)	(87)
	24	25	26	27	28	29	30
DAM NYCA	0	0	0	0	0	0	0
DAM NON-NYCA	0	0	0	0	0	0	0
DAM WHEELS	0	0	0	0	0	0	0
DAM VIRTUAL	0	0	0	0	0	0	0
BALANCING NYCA	2	4	12	9	20	4	3
BALANCING NON-NYCA	0	0	0	0	0	0	0
BALANCING WHEELS	0	0	0	0	0	0	0
BALANCING VIRTUAL	0	0	0	0	0	0	0
LOSSES	(229)	(86)	(82)	(64)	(169)	(135)	(139)
	31						
DAM NYCA	0						
DAM NON-NYCA	0						
DAM WHEELS	0						
DAM VIRTUAL	0						
BALANCING NYCA	17						
BALANCING NON-NYCA	0						
BALANCING WHEELS	0						
BALANCING VIRTUAL	0						
LOSSES	(261)						



SETTLEMENTS REPORT
 ATTACHMENT D: JULY 2000 CLOSEOUT SETTLEMENT
 OCTOBER 21, 2005

24-MONTH SETTLEMENT ADJUSTMENT MARKET SUPPLY ANALYSIS

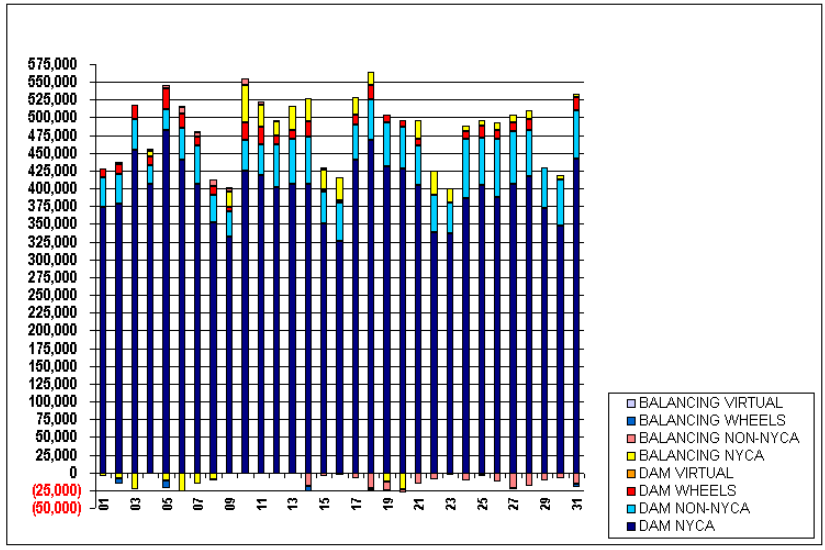
	MONDAY	TUESDAY	WEDNESDAY	THURSDAY	FRIDAY	SATURDAY	SUNDAY
						1	2
DAM NYCA						373,369	377,843
DAM NON-NYCA						42,378	43,082
DAM WHEELS						12,936	13,296
DAM VIRTUAL						0	0
BALANCING NYCA						(6,242)	(7,845)
BALANCING NON-NYCA						(27)	3,766
BALANCING WHEELS						(402)	(7,439)
BALANCING VIRTUAL						0	0
	3	4	5	6	7	8	9
DAM NYCA	454,936	406,669	481,769	439,823	406,360	351,716	331,680
DAM NON-NYCA	42,369	27,329	29,181	46,117	54,430	39,690	36,364
DAM WHEELS	19,820	12,542	29,724	20,140	12,864	11,653	6,352
DAM VIRTUAL	0	0	0	0	0	0	0
BALANCING NYCA	(23,592)	6,984	(11,655)	(27,254)	(15,480)	(10,097)	20,482
BALANCING NON-NYCA	197	4,121	5,443	8,828	5,579	9,890	5,653
BALANCING WHEELS	(723)	(2,772)	(9,893)	1,566	1,300	(1,945)	1,446
BALANCING VIRTUAL	0	0	0	0	0	0	0
	10	11	12	13	14	15	16
DAM NYCA	424,428	418,481	402,053	406,812	406,518	350,203	326,501
DAM NON-NYCA	43,515	43,223	59,923	63,521	66,475	46,047	54,186
DAM WHEELS	25,732	25,110	11,964	12,064	21,768	3,152	3,152
DAM VIRTUAL	0	0	0	0	0	0	0
BALANCING NYCA	52,281	31,532	20,663	33,327	32,811	27,526	32,193
BALANCING NON-NYCA	8,215	4,342	(327)	(2,273)	(19,739)	(4,538)	(4,319)
BALANCING WHEELS	(2,624)	(1,562)	857	(403)	(5,336)	2,050	0
BALANCING VIRTUAL	0	0	0	0	0	0	0
	17	18	19	20	21	22	23
DAM NYCA	439,794	468,353	430,484	428,152	405,155	338,998	336,739
DAM NON-NYCA	50,364	57,388	62,182	58,551	55,442	51,656	42,722
DAM WHEELS	13,536	20,230	10,548	9,098	9,098	320	320
DAM VIRTUAL	0	0	0	0	0	0	0
BALANCING NYCA	24,123	18,873	(13,477)	(23,486)	26,250	34,359	20,954
BALANCING NON-NYCA	(7,620)	(22,734)	(11,494)	(5,212)	(16,239)	(9,075)	(4,344)
BALANCING WHEELS	365	(1,898)	(946)	100	(416)	219	0
BALANCING VIRTUAL	0	0	0	0	0	0	0
	24	25	26	27	28	29	30
DAM NYCA	386,291	406,164	387,146	406,551	417,895	372,314	346,961
DAM NON-NYCA	83,628	66,592	82,493	74,573	65,027	57,180	65,745
DAM WHEELS	10,268	16,668	12,368	12,068	14,768	320	320
DAM VIRTUAL	0	0	0	0	0	0	0
BALANCING NYCA	8,736	7,521	10,997	11,073	11,727	(54)	5,351
BALANCING NON-NYCA	(11,522)	(4,105)	(13,199)	(21,872)	(19,927)	(11,422)	(7,526)
BALANCING WHEELS	250	(296)	(177)	(2,211)	(6)	168	0
BALANCING VIRTUAL	0	0	0	0	0	0	0
	31						
DAM NYCA	441,621						
DAM NON-NYCA	67,882						
DAM WHEELS	19,278						
DAM VIRTUAL	0						
BALANCING NYCA	5,250						
BALANCING NON-NYCA	(15,779)						
BALANCING WHEELS	(4,620)						
BALANCING VIRTUAL	0						



SETTLEMENTS REPORT
ATTACHMENT D: JULY 2000 CLOSEOUT SETTLEMENT
OCTOBER 21, 2005

CLOSEOUT SETTLEMENT MARKET SUPPLY ANALYSIS

	MONDAY	TUESDAY	WEDNESDAY	THURSDAY	FRIDAY	SATURDAY	SUNDAY
						1	2
DAM NYCA						373,369	377,843
DAM NON-NYCA						42,378	43,082
DAM WHEELS						12,936	13,396
DAM VIRTUAL						0	0
BALANCING NYCA						(6,254)	(7,857)
BALANCING NON-NYCA						(27)	3,766
BALANCING WHEELS						(402)	(7,439)
BALANCING VIRTUAL						0	0
	3	4	5	6	7	8	9
DAM NYCA	454,936	405,659	481,769	439,823	406,360	351,716	331,680
DAM NON-NYCA	42,369	27,329	29,181	46,117	54,430	39,590	36,364
DAM WHEELS	19,820	12,642	29,724	20,140	12,864	11,653	6,352
DAM VIRTUAL	0	0	0	0	0	0	0
BALANCING NYCA	(23,697)	6,867	(12,006)	(27,452)	(15,584)	(10,146)	20,418
BALANCING NON-NYCA	197	4,121	5,443	8,828	5,579	9,890	5,653
BALANCING WHEELS	(723)	(2,772)	(9,893)	1,566	1,300	(1,945)	1,446
BALANCING VIRTUAL	0	0	0	0	0	0	0
	10	11	12	13	14	15	16
DAM NYCA	424,428	418,481	402,053	406,812	406,518	350,203	326,501
DAM NON-NYCA	43,515	43,223	59,923	63,521	66,476	46,047	54,186
DAM WHEELS	25,732	25,110	11,964	12,064	21,768	3,152	3,152
DAM VIRTUAL	0	0	0	0	0	0	0
BALANCING NYCA	52,150	31,412	20,511	33,266	32,656	27,458	32,074
BALANCING NON-NYCA	8,315	4,342	(327)	(2,273)	(19,739)	(4,538)	(4,319)
BALANCING WHEELS	(2,624)	(1,562)	857	(403)	(6,336)	2,050	0
BALANCING VIRTUAL	0	0	0	0	0	0	0
	17	18	19	20	21	22	23
DAM NYCA	439,794	468,253	430,484	428,152	405,155	338,998	336,799
DAM NON-NYCA	50,364	57,388	62,182	58,551	55,442	51,656	42,722
DAM WHEELS	13,536	20,230	10,548	9,088	9,088	320	320
DAM VIRTUAL	0	0	0	0	0	0	0
BALANCING NYCA	25,076	18,612	(13,561)	(23,693)	26,194	34,280	20,853
BALANCING NON-NYCA	(7,620)	(22,734)	(11,494)	(5,212)	(16,239)	(9,075)	(4,344)
BALANCING WHEELS	385	(1,895)	(945)	100	(415)	219	0
BALANCING VIRTUAL	0	0	0	0	0	0	0
	24	25	26	27	28	29	30
DAM NYCA	386,291	405,164	387,146	406,551	417,895	372,314	346,961
DAM NON-NYCA	83,628	66,592	82,493	74,573	65,027	57,180	65,745
DAM WHEELS	10,268	16,668	12,368	12,068	14,768	320	320
DAM VIRTUAL	0	0	0	0	0	0	0
BALANCING NYCA	8,510	7,439	10,925	11,028	11,578	(185)	5,170
BALANCING NON-NYCA	(11,522)	(4,195)	(13,198)	(21,872)	(18,927)	(11,422)	(7,526)
BALANCING WHEELS	250	(295)	(177)	(2,211)	(5)	168	0
BALANCING VIRTUAL	0	0	0	0	0	0	0
	31						
DAM NYCA	441,621						
DAM NON-NYCA	67,882						
DAM WHEELS	19,278						
DAM VIRTUAL	0						
BALANCING NYCA	5,005						
BALANCING NON-NYCA	(15,779)						
BALANCING WHEELS	(4,620)						
BALANCING VIRTUAL	0						



SETTLEMENTS REPORT
 ATTACHMENT D: JULY 2000 CLOSEOUT SETTLEMENT
 OCTOBER 21, 2005

CLOSEOUT SETTLEMENT MARKET SUPPLY DELTA ANALYSIS

	MONDAY	TUESDAY	WEDNESDAY	THURSDAY	FRIDAY	SATURDAY	SUNDAY
						1	2
DAM NYCA						0	0
DAM NON-NYCA						0	0
DAM WHEELS						0	0
DAM VIRTUAL						0	0
BALANCING NYCA						(12)	(12)
BALANCING NON-NYCA						0	0
BALANCING WHEELS						0	0
BALANCING VIRTUAL						0	0
	3	4	5	6	7	8	9
DAM NYCA	0	0	0	0	0	0	0
DAM NON-NYCA	0	0	0	0	0	0	0
DAM WHEELS	0	0	0	0	0	0	0
DAM VIRTUAL	0	0	0	0	0	0	0
BALANCING NYCA	(115)	(117)	(651)	(198)	(104)	(49)	(63)
BALANCING NON-NYCA	0	0	0	0	0	0	0
BALANCING WHEELS	0	0	0	0	0	0	0
BALANCING VIRTUAL	0	0	0	0	0	0	0
	10	11	12	13	14	15	16
DAM NYCA	0	0	0	0	0	0	0
DAM NON-NYCA	0	0	0	0	0	0	0
DAM WHEELS	0	0	0	0	0	0	0
DAM VIRTUAL	0	0	0	0	0	0	0
BALANCING NYCA	(131)	(120)	(62)	(61)	(155)	(68)	(118)
BALANCING NON-NYCA	0	0	0	0	0	0	0
BALANCING WHEELS	0	0	0	0	0	0	0
BALANCING VIRTUAL	0	0	0	0	0	0	0
	17	18	19	20	21	22	23
DAM NYCA	0	0	0	0	0	0	0
DAM NON-NYCA	0	0	0	0	0	0	0
DAM WHEELS	0	0	0	0	0	0	0
DAM VIRTUAL	0	0	0	0	0	0	0
BALANCING NYCA	953	(261)	(84)	(207)	(66)	(79)	(101)
BALANCING NON-NYCA	0	0	0	0	0	0	0
BALANCING WHEELS	0	0	0	0	0	0	0
BALANCING VIRTUAL	0	0	0	0	0	0	0
	24	25	26	27	28	29	30
DAM NYCA	0	0	0	0	0	0	0
DAM NON-NYCA	0	0	0	0	0	0	0
DAM WHEELS	0	0	0	0	0	0	0
DAM VIRTUAL	0	0	0	0	0	0	0
BALANCING NYCA	(226)	(82)	(71)	(45)	(148)	(131)	(181)
BALANCING NON-NYCA	0	0	0	0	0	0	0
BALANCING WHEELS	0	0	0	0	0	0	0
BALANCING VIRTUAL	0	0	0	0	0	0	0
	31						
DAM NYCA	0						
DAM NON-NYCA	0						
DAM WHEELS	0						
DAM VIRTUAL	0						
BALANCING NYCA	(244)						
BALANCING NON-NYCA	0						
BALANCING WHEELS	0						
BALANCING VIRTUAL	0						

