
NYISO President's Report

*Management Committee Meeting
November 29, 2006*

Agenda #3

Report Items

- NYISO 2007 Budget & ERO Billing Update
- Customer Relations Dept. (CRD) Reorganization
- Notice of Bad Debt Recoveries & Losses
- Nov. 23-24, 2006 Late Posting
- December 2006 Board Meeting
- Price Correction Status Update
- Market Performance Highlights – For Information Only

NYISO 2007 Budget & ERO Billing Update

- NYISO Board approved the 2007 Budget on November 21st, as recommended by the MC on November 6th, in the amount of \$139.7M and \$0.821/MWH
- NYISO Board approved the NYISO management recommendation to develop appropriate tariff language to reflect the NYISO's acceptance of the NERC ERO billing agent role

Customer Relations: Roll-Out of New Structure

- ◆ **When** Tuesday, December 12
- ◆ **Why** Faster resolution
Improved service
More responsive
- ◆ **How** Inquiries are:
 - Centralized
 - Streamlined and forwarded to special response teams
 - Channeled through 518-356-6060 or
market_services@nyiso.com
- ◆ **Next** Letters and NYISO Web site will inform Market Participants
on details of the new structure

Notice of Bad Debt Recoveries & Losses

- **Recovery of previously-declared bad debt losses:**
 - NYISO will be refunding an additional \$1.8M recovered against the Enron bad debt losses declared in 2003. Total amounts recovered to date are \$6.4M (~57%) of the \$11.2M loss originally declared.
 - Refunds will be processed (to all market participants originally assessed the Enron loss) on the November 2006 consolidated invoice, to be issued on December 7, 2006.
- **Declaration of new bad debt losses:**
 - NYISO plans to declare \$194K in new bad debt losses. As previously discussed with the Management Committee, \$178K of this total relates to losses sustained in the virtual bidding market by Sun Tzu Trading, and will be recovered pursuant to Attachment I of the Services Tariff. The remaining \$16K in losses are non-virtual losses from a total of 4 market participants, which will be recovered under Attachment U of the OATT.
 - These bad debt losses will be charged to market participants on the January 2007 consolidated invoice, to be issued on February 7, 2007. These losses are being recovered following the deployment of the automated bad debt loss tool in January 2007.
- **Official Notice:**

An official notice regarding details of these recoveries and losses will be posted to the NYISO website in the upcoming week.

Overview – Nov 23rd Late Posting

- An Application System integration error occurred mid way through the DAM processing
- Process correction required re-running the integration process after manually re-setting integration flags back to the beginning of the process
 - LBMP's were updated prior to 11:00
 - DAM Schedules and MIS Bid Acceptance completed at 12:00

Overview – Nov 24th Late Posting

- Activities performed on November 23rd caused issues on November 24th as several of the flags that were manually re-set were not set back to the normal process sequence
- After re-setting the flags, we needed to re-run the posting process
 - DAM Schedules and MIS Bid Acceptance completed at 11:36
- Follow-up includes review of procedures and controls in handling of processing errors
 - Review of documentation
 - Training for IT staff

December 2006 Board Meeting

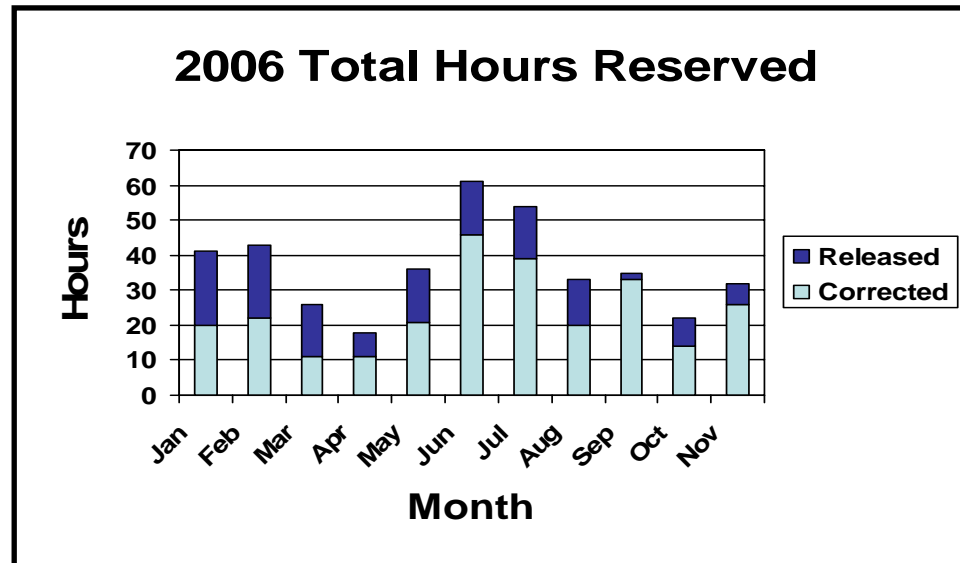
- NYISO Board Meetings – December 18th
 - Board Committee Meetings & Board Meeting
- Liaison Committee Meeting – late afternoon following Board meetings

Price Validation Status Update

- Overall pricing accuracy good in November
 - Single event on one day accounts for 75% of errors
 - Software error, since corrected, did not correctly manage an outage to the Cross Sound Cable
- Price correction processes improvement
 - Processes for timely reservations reviewed with MPs
 - Correction performance continues to meet or exceed FERC standard
- Projects to improve PV processes proceeding
 - Enhanced Price Validation
 - Transmission Constraint Pricing

Price Correction Statistics

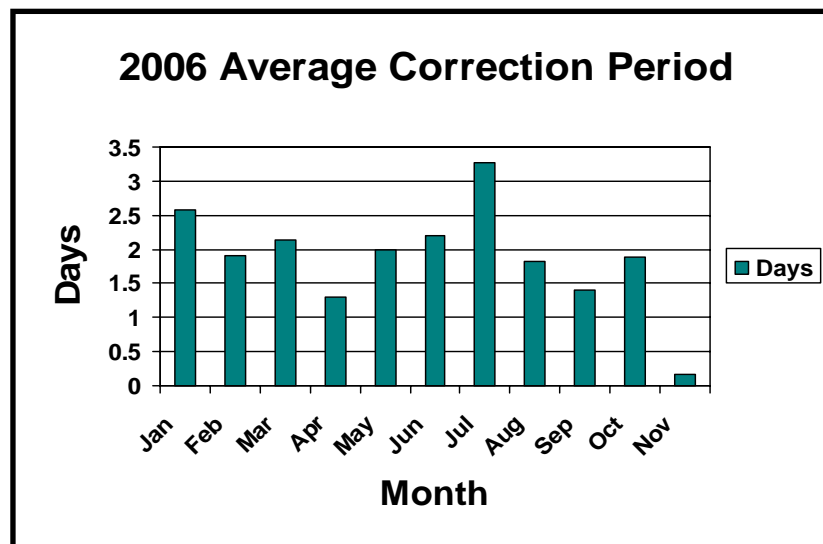
2006 YTD	Reservations	Corrections	Released	Tot. Hours
July	54	39	15	744
August	33	20	13	744
September	35	33	2	720
October	22	14	8	744
November*	32	26	6	648



* - Data through 27 November 2006

Price Correction Statistics (Cont.)

2006 YTD	Days Corrected	Avg	Max	Min
July	18	3.28	5	0
August	11	1.82	5	0
September	5	1.40	3	0
October	8	1.88	3	1
November*	6	0.17	1	0

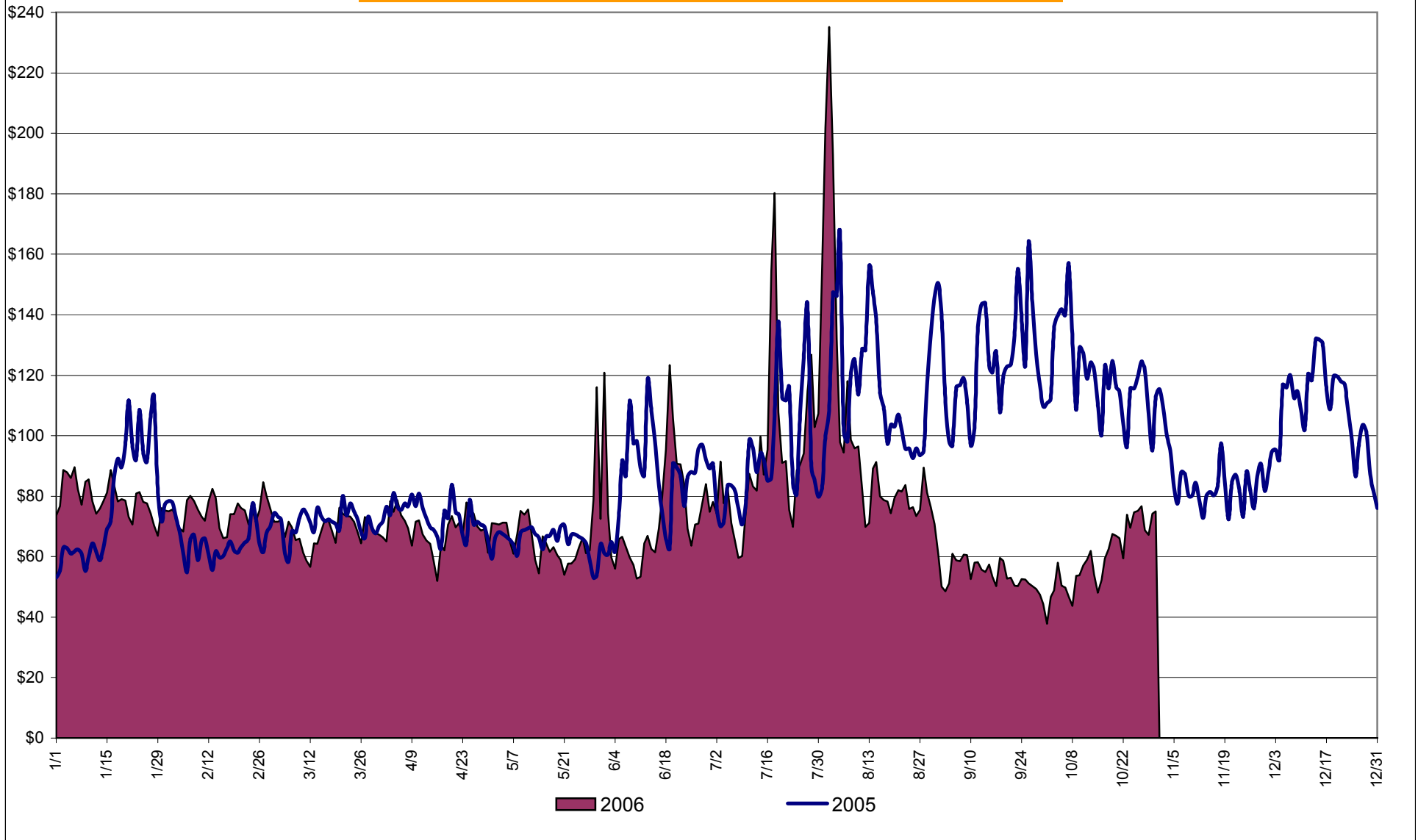


* - Data through 27 November 2006

Market Performance Highlights for October 2006

- LBMP for October is \$57.60/MWh, up from \$51.89/MWh in September.
 - Average monthly cost is \$60.38/MWh, up from \$54.38/MWh in September.
 - Day Ahead and Real Time LBMPs have increased from September.
- Fuel prices are mixed this month.
 - Kerosene is \$13.25/mmBTU, down from \$13.96/mmBTU in September
 - No. 2 Fuel Oil is \$11.72/mmBTU, down from \$12.12/mmBTU in September
 - No. 6 Fuel Oil is \$7.60/mmBTU, down from \$7.63/mmBTU in September
 - Natural Gas is \$6.23/mmBTU, up from \$5.14/mmBTU in September
- Uplift has increased slightly this month relative to September 2006.
 - Uplift (not including NYISO cost of operations) is \$0.68/MWh, up from \$0.46/MWh in September.
 - Total uplift (Schedule 1 components including NYISO Cost of Operations) increased from \$14.7 million in September 2006 to \$17.2 million in October 2006.
- The virtual market showed an increase in activity from August and September.

Daily NYISO Average Cost/MWh (Energy & Ancillary Services)*
2005 Annual Average \$93.83/MWh
October 2005 YTD Average \$93.02/MWh
October 2006 YTD Average \$77.72/MWh



* Excludes ICAP payments.

NYISO Average Cost/MWh (Energy and Ancillary Services) *
from the LBMP Customer point of view

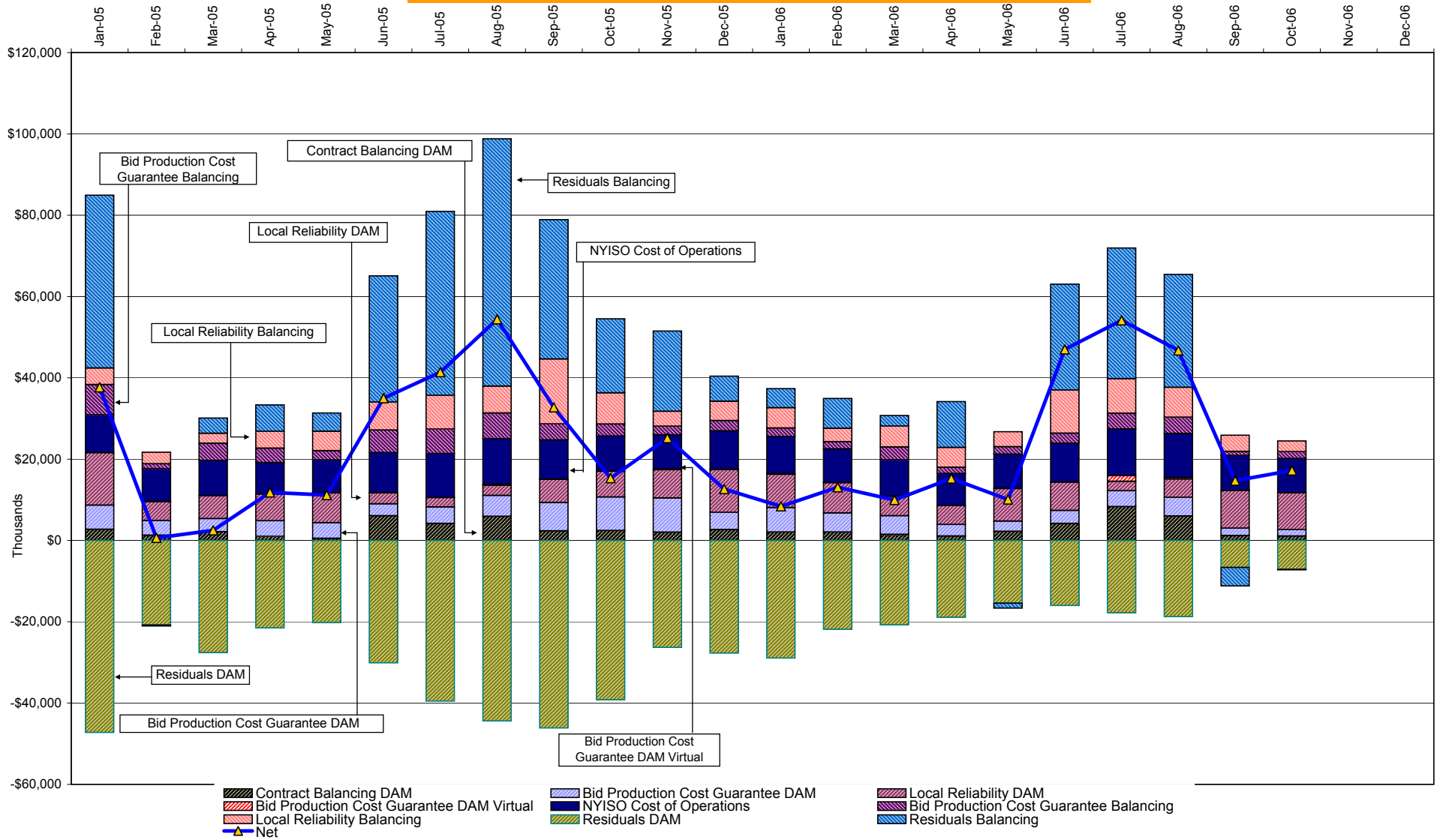
2006	<u>January</u>	<u>February</u>	<u>March</u>	<u>April</u>	<u>May</u>	<u>June</u>	<u>July</u>	<u>August</u>	<u>September</u>	<u>October</u>	<u>November</u>	<u>December</u>
LBMP	77.13	71.86	66.52	66.24	65.54	71.94	93.41	101.33	51.89	57.60		
NTAC	0.46	0.90	0.43	0.54	0.64	0.69	0.47	0.39	0.33	0.38		
Reserve	0.35	0.30	0.29	0.35	0.16	0.22	0.30	0.13	0.29	0.29		
Regulation	0.56	0.68	0.69	0.47	0.42	0.39	0.30	0.28	0.41	0.43		
NYISO Cost of Operations	0.64	0.64	0.64	0.64	0.64	0.64	0.64	0.64	0.64	0.64		
Uplift	(0.06)	0.37	0.09	0.63	0.12	2.63	2.42	2.28	0.46	0.68		
Voltage Support and Black Start	0.36	0.36	0.36	0.36	0.36	0.36	0.36	0.36	0.36	0.36		
Avg Monthly Cost	79.46	75.11	69.03	69.24	67.88	76.87	97.90	105.42	54.38	60.38		
Avg YTD Cost	79.46	77.40	74.49	73.24	72.19	73.07	77.90	82.11	79.45	77.72		

2005	<u>January</u>	<u>February</u>	<u>March</u>	<u>April</u>	<u>May</u>	<u>June</u>	<u>July</u>	<u>August</u>	<u>September</u>	<u>October</u>	<u>November</u>	<u>December</u>
LBMP	75.70	64.04	69.94	71.28	63.13	84.85	92.41	115.19	122.46	118.59	82.01	106.12
NTAC	0.42	0.35	0.23	0.48	0.39	0.58	0.46	0.25	0.10	0.03	0.39	0.64
Reserve	0.25	0.08	0.17	0.21	0.20	(0.01)	0.11	0.02	0.31	0.54	0.34	0.38
Regulation	0.32	0.38	0.34	0.22	0.25	0.20	0.15	0.06	0.41	0.64	0.70	0.53
NYISO Cost of Operations	0.63	0.63	0.63	0.63	0.63	0.63	0.63	0.63	0.63	0.63	0.63	0.63
Uplift	1.99	(0.57)	(0.45)	0.35	0.26	1.76	1.92	2.54	1.57	0.50	1.27	0.20
Voltage Support and Black Start	0.39	0.39	0.39	0.39	0.39	0.39	0.39	0.39	0.39	0.39	0.39	0.39
Avg Monthly Cost	79.71	65.30	71.25	73.56	65.26	88.41	96.06	119.07	125.87	121.32	85.74	108.89
Avg YTD Cost	79.71	73.20	72.53	72.77	71.45	74.81	78.81	85.42	90.22	93.02	92.45	93.83

* Excludes ICAP payments.

These numbers reflect the rebilling of prior periods.

NYISO Dollar Flows - Uplift - OATT Schedule 1 components



DAM Contract Balancing amounts are for payments made to generating units to make them whole for being dispatched below their Day-Ahead schedule, as a result of out-of-merit dispatches. DAM Bid Production Cost Guarantees for Virtual Transactions are included in the chart and are shown from the inception of Virtual Transactions. These values are small and cannot be identified on the chart. DAM residuals are revenue charged or returned to customers due to the under or over collection of funds.

NYISO Markets Transactions

<u>2006</u>	<u>January</u>	<u>February</u>	<u>March</u>	<u>April</u>	<u>May</u>	<u>June</u>	<u>July</u>	<u>August</u>	<u>September</u>	<u>October</u>	<u>November</u>	<u>December</u>
Day Ahead Market MWh	13,877,416	12,532,754	13,392,627	11,860,369	12,637,299	14,251,897	17,302,066	16,604,505	13,110,510	12,648,358		
DAM LSE Internal LBMP Energy Sales	46%	47%	48%	50%	46%	48%	51%	50%	46%	47%		
DAM External TC LBMP Energy Sales	4%	3%	2%	2%	3%	3%	5%	5%	3%	3%		
DAM Bilateral - Internal Bilaterals	47%	47%	45%	45%	47%	45%	41%	42%	48%	47%		
DAM Bilateral - Import/Non-LBMP Market Bilaterals	2%	2%	2%	2%	2%	2%	1%	2%	2%	2%		
DAM Bilateral - Export/Non-LBMP Market Bilaterals	1%	1%	2%	1%	1%	1%	2%	1%	1%	1%		
DAM Bilateral - Wheel Through Bilaterals	0%	0%	0%	0%	0%	0%	0%	0%	0%	0%		
Balancing Energy Market MWh	299,347	312,712	555,364	396,752	486,039	559,821	471,866	339,367	233,201	512,098		
Balancing Energy LSE Internal LBMP Energy Sales	2%	20%	31%	26%	45%	32%	49%	38%	-16%	51%		
Balancing Energy External TC LBMP Energy Sales	87%	76%	66%	68%	48%	60%	62%	63%	89%	45%		
Balancing Energy Bilateral - Internal Bilaterals	5%	2%	2%	2%	2%	5%	1%	2%	-1%	1%		
Balancing Energy Bilateral - Import/Non-LBMP Market Bilaterals	2%	1%	0%	0%	3%	0%	0%	0%	3%	0%		
Balancing Energy Bilateral - Export/Non-LBMP Market Bilaterals	1%	1%	1%	1%	0%	0%	-12%	1%	1%	1%		
Balancing Energy Bilateral - Wheel Through Bilaterals	4%	1%	0%	3%	2%	3%	0%	-3%	24%	2%		
Transactions Summary												
LBMP	51%	50%	52%	53%	51%	53%	57%	56%	49%	52%		
Internal Bilaterals	46%	46%	43%	43%	45%	44%	40%	42%	47%	45%		
Import Bilaterals	2%	2%	2%	2%	2%	2%	1%	1%	2%	2%		
Export Bilaterals	1%	1%	2%	1%	1%	1%	1%	1%	1%	1%		
Wheels Through	0%	0%	0%	0%	0%	0%	0%	0%	0%	0%		
Market Share of Total Load												
Day Ahead Market	97.9%	97.6%	96.0%	96.8%	96.3%	96.2%	97.3%	98.0%	98.3%	96.1%		
Balancing Energy †	2.1%	2.4%	4.0%	3.2%	3.7%	3.8%	2.7%	2.0%	1.7%	3.9%		
Total MWh	14,176,763	12,845,466	13,947,991	12,257,122	13,123,339	14,811,719	17,773,932	16,943,872	13,343,711	13,160,456		
Average Daily Energy Sendout/Month GWh	439	444	428	395	407	471	528	518	430	409		
2005	<u>January</u>	<u>February</u>	<u>March</u>	<u>April</u>	<u>May</u>	<u>June</u>	<u>July</u>	<u>August</u>	<u>September</u>	<u>October</u>	<u>November</u>	<u>December</u>
Day Ahead Market MWh	14,281,481	12,510,148	13,410,579	12,215,628	12,773,478	14,981,363	16,344,465	16,587,663	14,706,243	13,309,658	12,893,992	14,418,648
DAM LSE Internal LBMP Energy Sales	48%	49%	52%	52%	45%	50%	53%	52%	49%	46%	45%	46%
DAM External TC LBMP Energy Sales	3%	1%	1%	1%	3%	3%	3%	4%	6%	4%	4%	5%
DAM Bilateral - Internal Bilaterals	47%	48%	45%	44%	50%	44%	42%	42%	43%	47%	48%	46%
DAM Bilateral - Import/Non-LBMP Market Bilaterals	1%	1%	1%	0%	0%	1%	1%	1%	2%	2%	2%	2%
DAM Bilateral - Export/Non-LBMP Market Bilaterals	1%	1%	1%	1%	2%	1%	1%	1%	1%	1%	1%	1%
DAM Bilateral - Wheel Through Bilaterals	1%	0%	1%	0%	0%	1%	0%	0%	0%	0%	0%	0%
Balancing Energy Market MWh	414,096	112,878	329,063	43,729	-101,266	589,757	798,279	1,108,556	554,021	378,592	359,195	509,212
Balancing Energy LSE Internal LBMP Energy Sales	77%	-52%	22%	-480%	-307%	47%	73%	73%	34%	2%	-18%	40%
Balancing Energy External TC LBMP Energy Sales	43%	176%	77%	616%	208%	44%	23%	21%	50%	94%	102%	50%
Balancing Energy Bilateral - Internal Bilaterals	-13%	-10%	7%	-36%	5%	5%	6%	6%	13%	4%	13%	11%
Balancing Energy Bilateral - Import/Non-LBMP Market Bilaterals	0%	0%	0%	0%	0%	0%	0%	0%	0%	0%	0%	0%
Balancing Energy Bilateral - Export/Non-LBMP Market Bilaterals	1%	0%	0%	3%	2%	1%	1%	0%	0%	1%	1%	1%
Balancing Energy Bilateral - Wheel Through Bilaterals	-8%	-14%	-5%	-2%	-8%	3%	-2%	1%	3%	-1%	2%	-1%
Transactions Summary												
LBMP	53%	51%	54%	54%	47%	54%	58%	58%	56%	52%	50%	52%
Internal Bilaterals	45%	47%	44%	44%	50%	43%	40%	39%	42%	45%	47%	45%
Import Bilaterals	1%	1%	1%	0%	0%	1%	1%	1%	1%	2%	2%	2%
Export Bilaterals	1%	1%	1%	1%	2%	1%	1%	1%	1%	1%	1%	1%
Wheels Through	0%	0%	0%	0%	0%	1%	0%	0%	0%	0%	0%	0%
Market Share of Total Load												
Day Ahead Market	97.2%	99.1%	97.6%	99.6%	100.8%	96.2%	95.3%	93.7%	96.4%	97.2%	97.3%	96.6%
Balancing Energy †	2.8%	0.9%	2.4%	0.4%	-0.8% *	3.8%	4.7%	6.3%	3.6%	2.8%	2.7%	3.4%
Total MWh	14,695,577	12,623,025	13,739,642	12,259,357	12,672,212	15,571,120	17,142,744	17,696,220	15,260,264	13,688,250	13,253,187	14,927,859
Average Daily Energy Sendout/Month GWh	462	447	433	399	395	501	536	549	478	418	419	454

† Balancing Energy: Load(MW) purchased at Real Time LBMP.

* The signs for the detail section intuitively reflect the direction of power flow eliminating the use of double negatives when Balancing Energy is negative.

Notes: Percent totals may not equal 100% due to rounding.
Virtual Transactions are not reflected in this chart.

NYISO Markets 2006 Energy Statistics

	<u>January</u>	<u>February</u>	<u>March</u>	<u>April</u>	<u>May</u>	<u>June</u>	<u>July</u>	<u>August</u>	<u>September</u>	<u>October</u>	<u>November</u>	<u>December</u>
<u>DAY AHEAD LBMP</u>												
Price *	\$73.28	\$68.90	\$64.31	\$63.21	\$59.31	\$64.40	\$83.27	\$88.13	\$48.97	\$53.46		
Standard Deviation	\$15.03	\$12.95	\$11.95	\$13.28	\$13.70	\$22.66	\$40.24	\$50.58	\$12.19	\$16.54		
Load Weighted Price **	\$75.09	\$70.34	\$65.74	\$64.93	\$61.29	\$68.02	\$89.27	\$95.39	\$50.76	\$55.39		
<u>RTC *** LBMP</u>												
Price *	\$70.25	\$63.41	\$63.04	\$62.39	\$60.81	\$61.60	\$77.27	\$91.21	\$47.92	\$56.36		
Standard Deviation	\$26.63	\$15.86	\$20.50	\$18.82	\$37.26	\$39.82	\$56.30	\$107.73	\$16.64	\$33.37		
Load Weighted Price **	\$71.94	\$64.44	\$64.43	\$63.93	\$63.75	\$65.15	\$83.30	\$101.89	\$49.51	\$58.87		
<u>REAL TIME LBMP</u>												
Price *	\$70.91	\$63.96	\$63.66	\$62.35	\$63.29	\$61.23	\$78.58	\$89.95	\$47.09	\$54.66		
Standard Deviation	\$31.34	\$20.06	\$23.01	\$20.98	\$62.40	\$52.63	\$66.83	\$97.29	\$17.93	\$27.32		
Load Weighted Price **	\$73.18	\$65.38	\$65.38	\$64.13	\$68.66	\$66.47	\$86.37	\$102.03	\$48.95	\$57.21		
Average Daily Energy Sendout/Month GWh	439	444	428	395	407	471	528	518	430	409		

NYISO Markets 2005 Energy Statistics

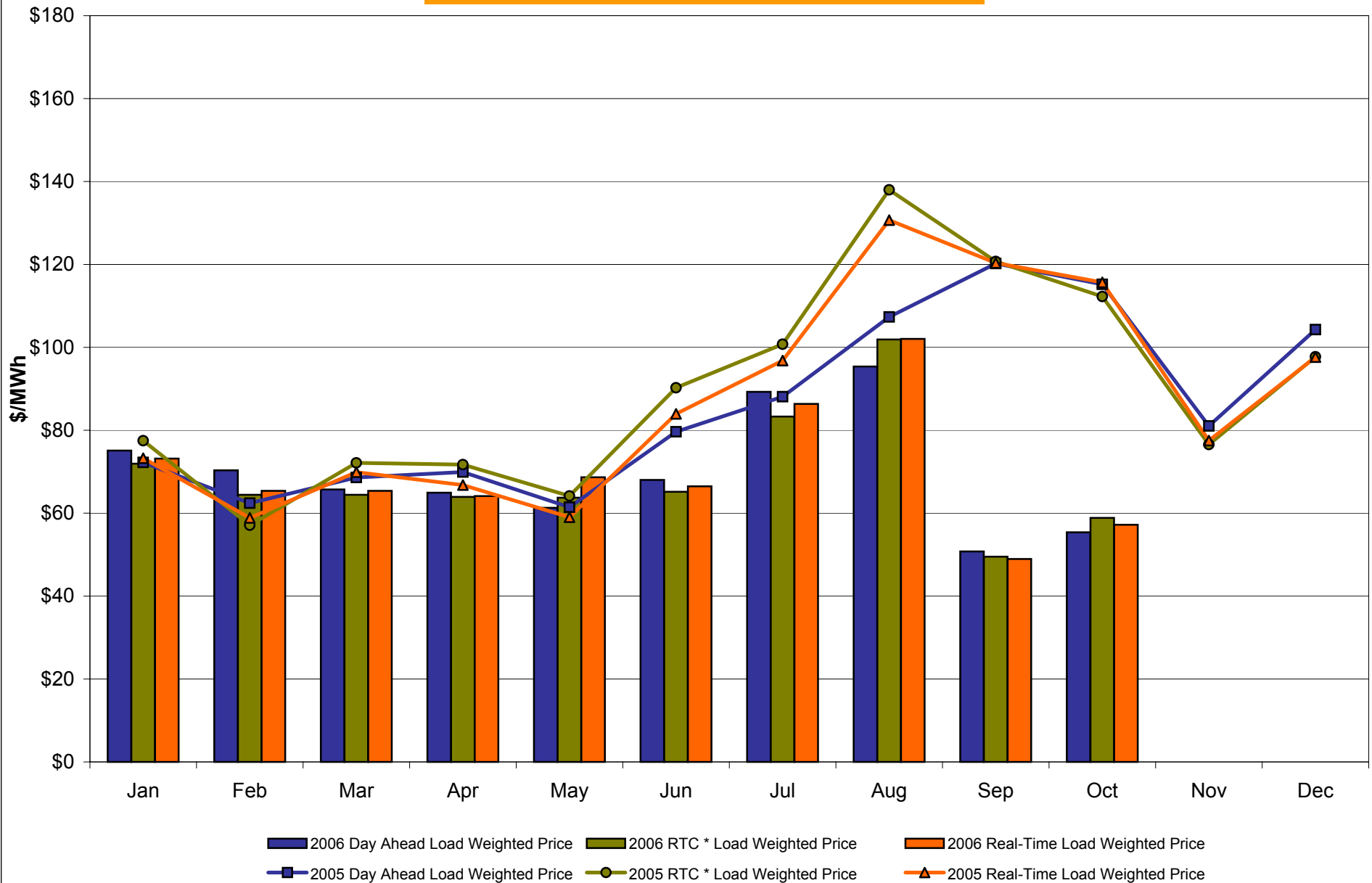
	<u>January</u>	<u>February</u>	<u>March</u>	<u>April</u>	<u>May</u>	<u>June</u>	<u>July</u>	<u>August</u>	<u>September</u>	<u>October</u>	<u>November</u>	<u>December</u>
<u>DAY AHEAD LBMP</u>												
Price *	\$69.55	\$61.04	\$67.17	\$68.14	\$59.59	\$75.49	\$83.75	\$102.33	\$115.47	\$110.99	\$78.56	\$101.24
Standard Deviation	\$23.42	\$12.00	\$12.49	\$14.20	\$13.39	\$22.85	\$24.32	\$31.65	\$32.31	\$28.39	\$21.07	\$26.32
Load Weighted Price **	\$72.26	\$62.42	\$68.61	\$69.92	\$61.44	\$79.64	\$88.09	\$107.34	\$120.22	\$115.20	\$81.05	\$104.27
<u>RTC *** LBMP</u>												
Price *	\$74.47	\$55.93	\$70.40	\$69.92	\$61.59	\$85.42	\$94.96	\$129.60	\$116.00	\$108.53	\$74.02	\$94.86
Standard Deviation	\$44.64	\$16.80	\$26.13	\$23.51	\$59.20	\$62.91	\$68.35	\$116.09	\$44.35	\$42.95	\$33.43	\$40.18
Load Weighted Price **	\$77.48	\$57.10	\$72.12	\$71.72	\$64.16	\$90.25	\$100.76	\$138.00	\$120.72	\$112.25	\$76.57	\$97.73
<u>REAL TIME LBMP</u>												
Price *	\$70.25	\$57.57	\$68.04	\$64.95	\$57.20	\$77.75	\$90.48	\$122.21	\$114.94	\$110.90	\$74.62	\$94.16
Standard Deviation	\$31.79	\$20.48	\$32.50	\$26.06	\$42.34	\$55.70	\$72.95	\$103.00	\$42.92	\$55.35	\$36.61	\$40.67
Load Weighted Price **	\$73.26	\$58.86	\$69.88	\$66.77	\$59.04	\$83.96	\$96.82	\$130.69	\$120.36	\$115.69	\$77.51	\$97.64
Average Daily Energy Sendout/Month GWh	462	447	433	399	395	501	536	549	478	418	419	454

* Average zonal load weighted prices.

** Average zonal load weighted prices, load weighted in each hour.

*** Referred to as RTC beginning February 2005. Prior to February 2005 known as BME or Hour Ahead Market (HAM).

NYISO Monthly Average Internal LBMPs 2005 - 2006



* Referred to as RTC beginning February 2005.
Prior to February 2005 known as BME or Hour Ahead Market (HAM).

October 2006 Zonal LBMP Statistics for NYISO (\$/MWh)

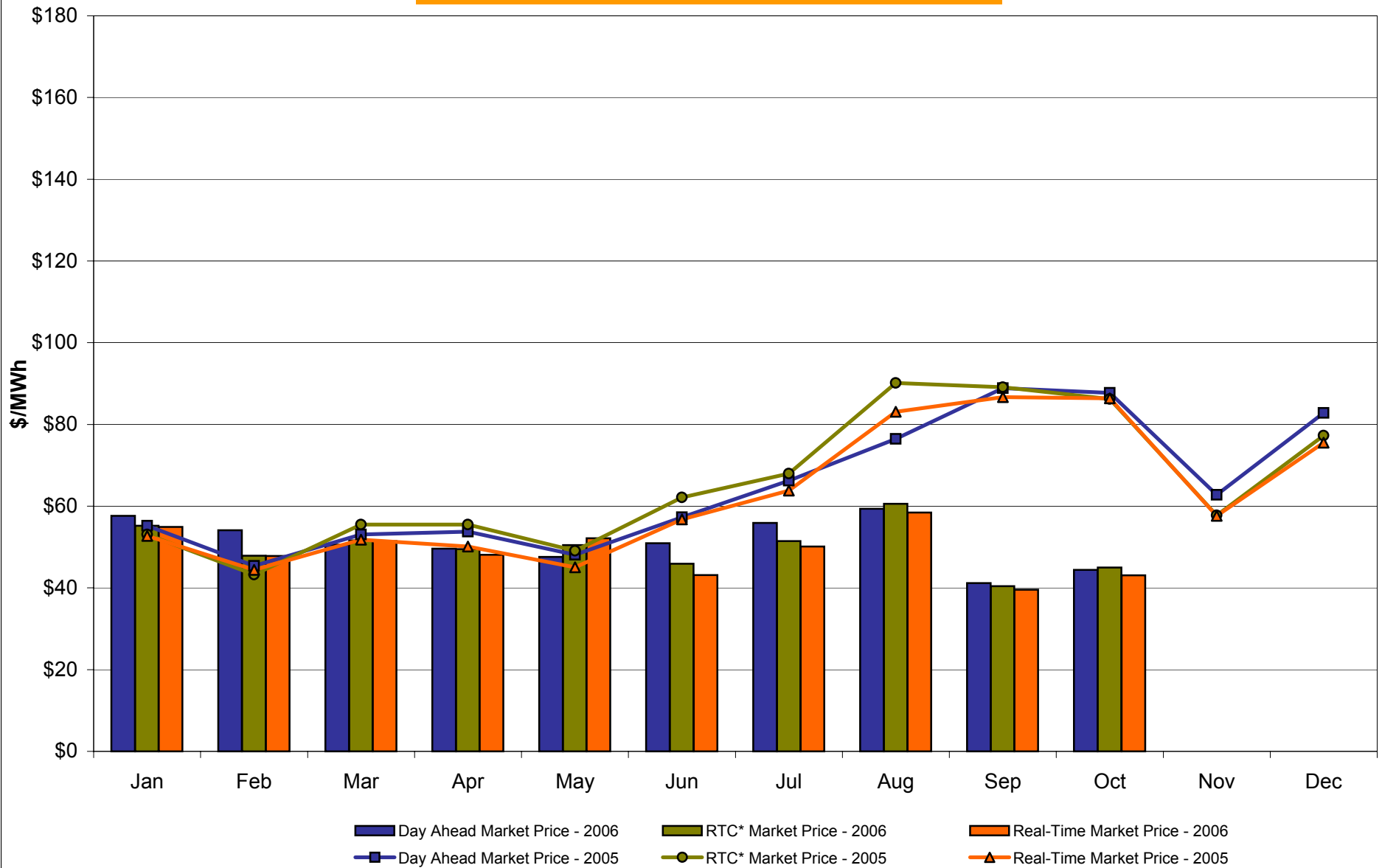
	<u>WEST Zone A</u>	<u>GENESEE Zone B</u>	<u>NORTH Zone D</u>	<u>CENTRAL Zone C</u>	<u>MOHAWK VALLEY Zone E</u>	<u>CAPITAL Zone F</u>	<u>HUDSON VALLEY Zone G</u>	<u>MILLWOOD Zone H</u>	<u>DUNWOODIE Zone I</u>	<u>NEW YORK CITY Zone J</u>	<u>LONG ISLAND Zone K</u>
<u>DAY AHEAD LBMP</u>											
Unweighted Price *	44.41	47.52	47.16	48.15	49.51	52.18	53.72	54.05	54.13	56.16	62.98
Standard Deviation	13.33	14.86	14.00	15.20	15.40	16.04	17.13	17.35	17.35	18.43	18.58
<u>RTC** LBMP</u>											
Unweighted Price *	45.00	49.44	48.72	49.95	51.24	55.82	58.43	58.80	58.87	60.35	65.02
Standard Deviation	26.25	30.84	29.78	30.93	31.74	35.04	37.03	37.72	37.78	37.46	37.30
<u>REAL TIME LBMP</u>											
Unweighted Price *	43.09	47.11	46.25	47.54	48.68	54.12	56.78	57.23	57.30	58.96	64.33
Standard Deviation	20.08	22.36	21.53	22.33	22.86	33.43	32.75	33.94	33.98	33.90	34.47
	<u>ONTARIO IESO Zone O</u>	<u>HYDRO QUEBEC Zone M</u>	<u>PJM Zone P</u>	<u>NEW ENGLAND Zone N</u>	<u>CROSS SOUND CABLE Controllable Line</u>						
<u>DAY AHEAD LBMP</u>											
Unweighted Price *	43.87	49.01	45.04	52.55	62.82						
Standard Deviation	13.17	15.08	14.14	16.27	18.72						
<u>RTC** LBMP</u>											
Unweighted Price *	41.94	50.03	44.56	52.56	35.78						
Standard Deviation	14.41	73.26	14.95	17.43	164.64						
<u>REAL TIME LBMP</u>											
Unweighted Price *	42.30	47.77	44.93	54.53	62.55						
Standard Deviation	19.69	21.71	20.47	31.74	35.31						

* Straight zonal LBMP averages

** Referred to as RTC beginning February 2005

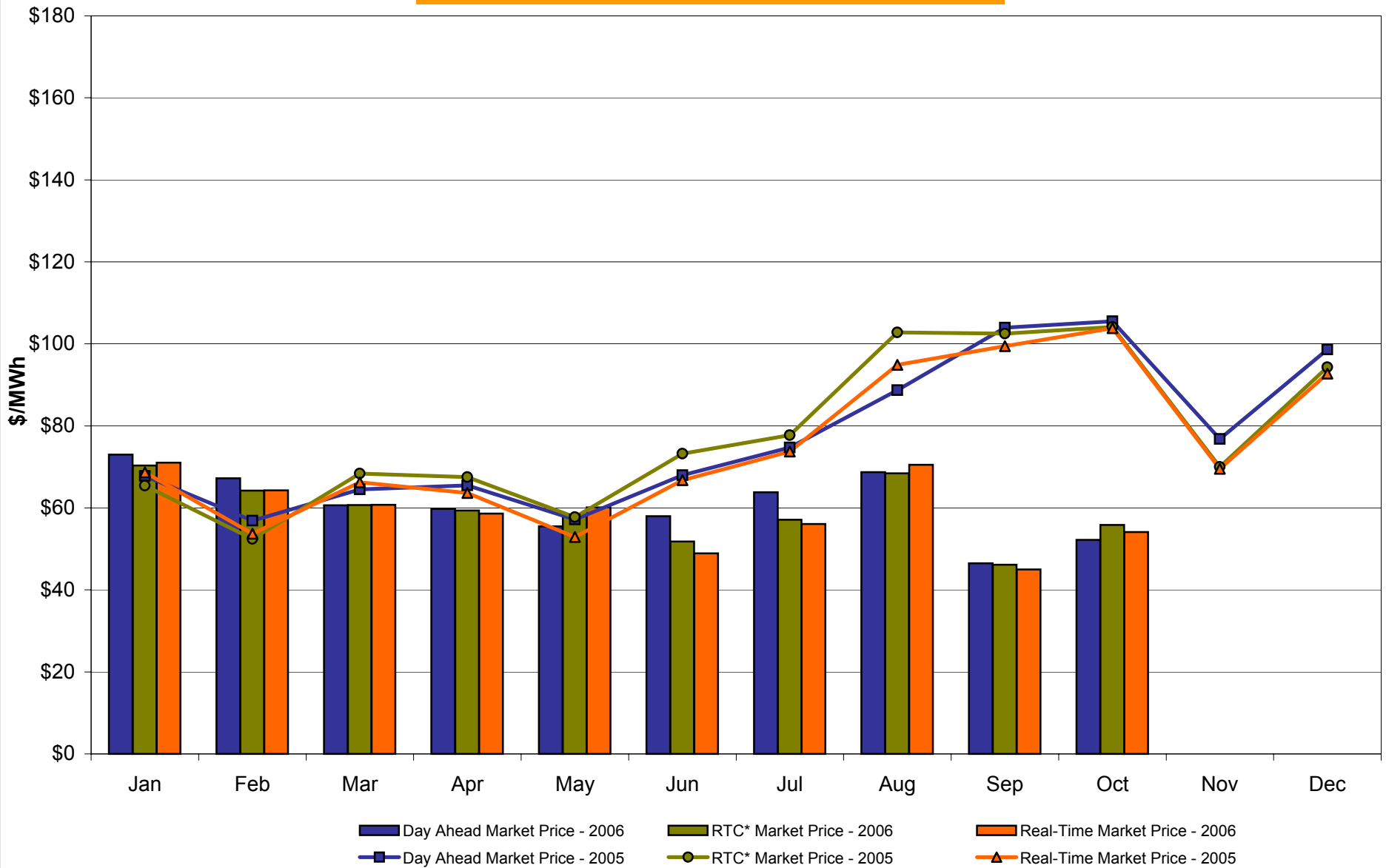
Prior to February 2005 known as BME or Hour Ahead Market (HAM)

West Zone A Monthly Average LBMP Prices 2005 - 2006



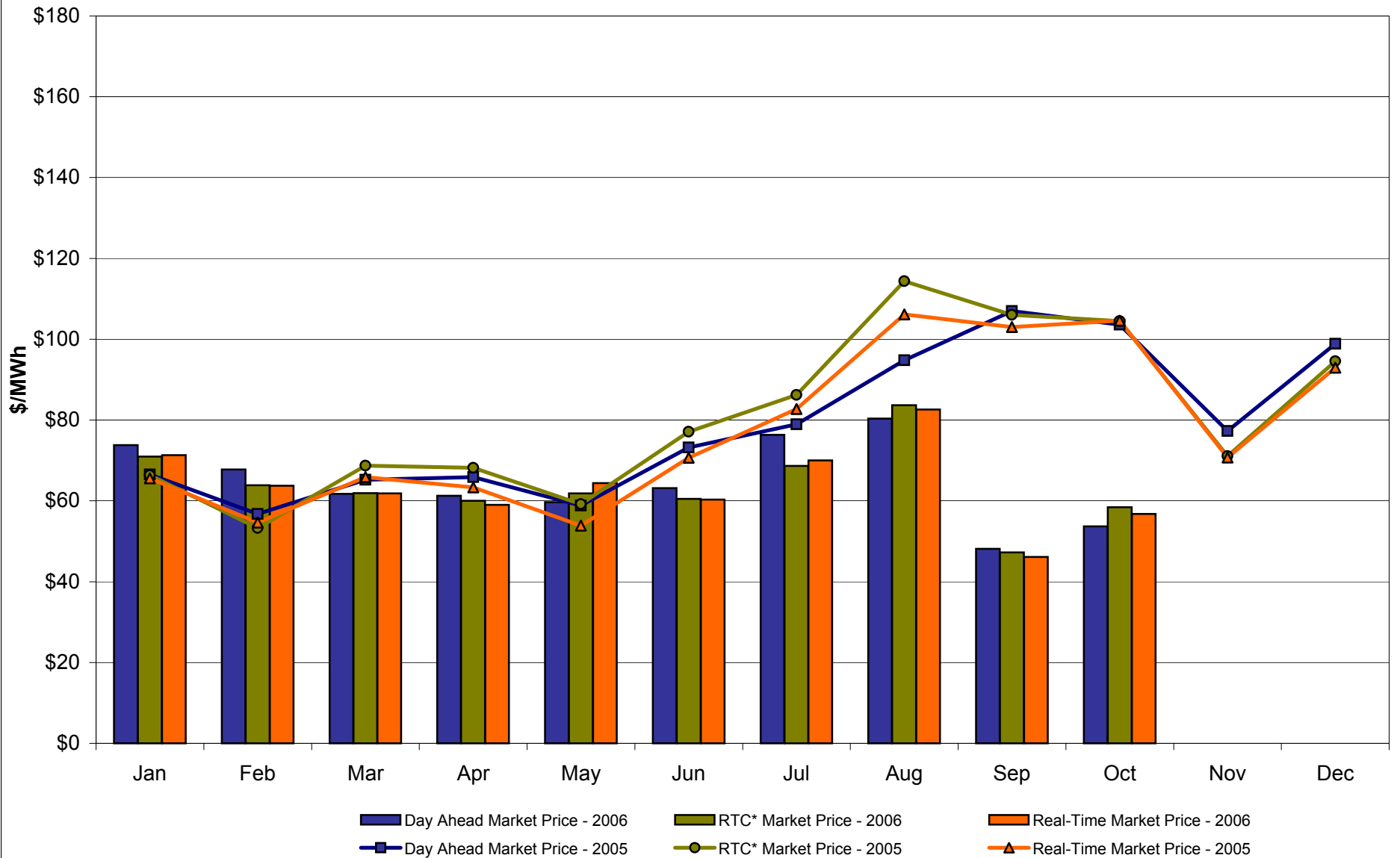
* Referred to as RTC beginning February 2005.
Prior to February 2005 known as BME or Hour Ahead Market (HAM).

Capital Zone F Monthly Average LBMP Prices 2005 - 2006



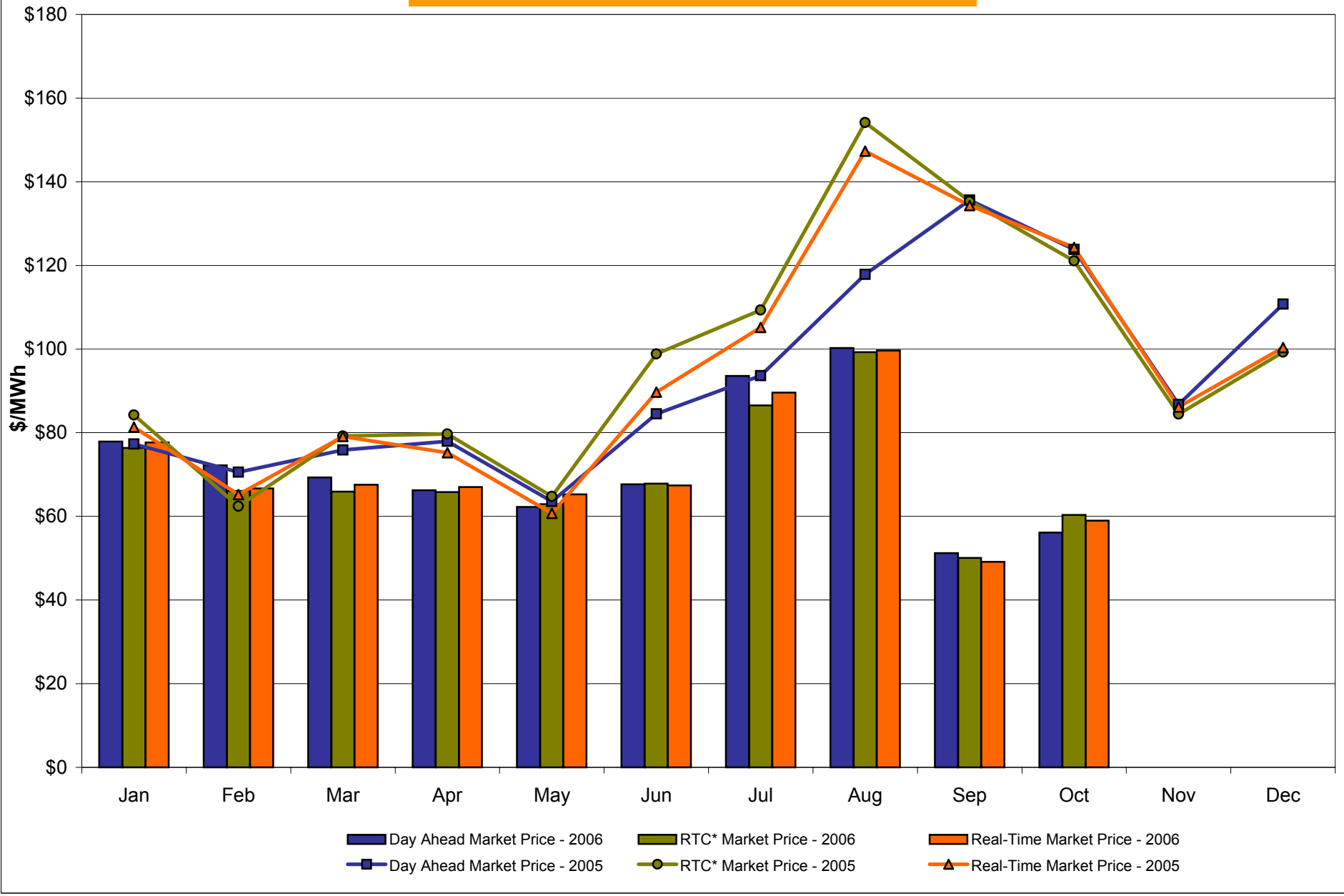
* Referred to as RTC beginning February 2005.
Prior to February 2005 known as BME or Hour Ahead Market (HAM).

Hudson Valley Zone G Monthly Average LBMP Prices 2005 - 2006



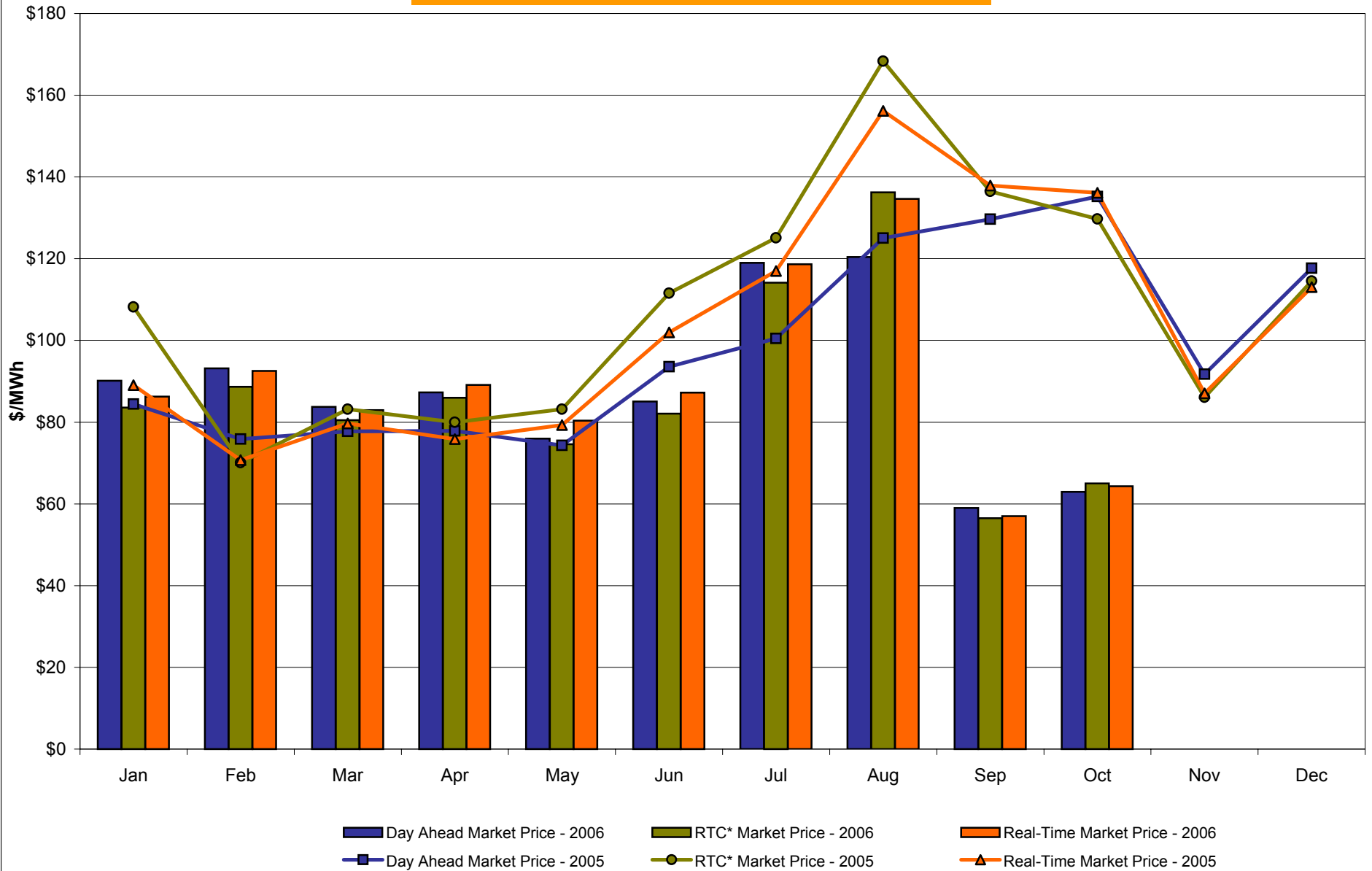
* Referred to as RTC beginning February 2005.
Prior to February 2005 known as BME or Hour Ahead Market (HAM).

NYC Zone J Monthly Average LBMP Prices 2005 - 2006



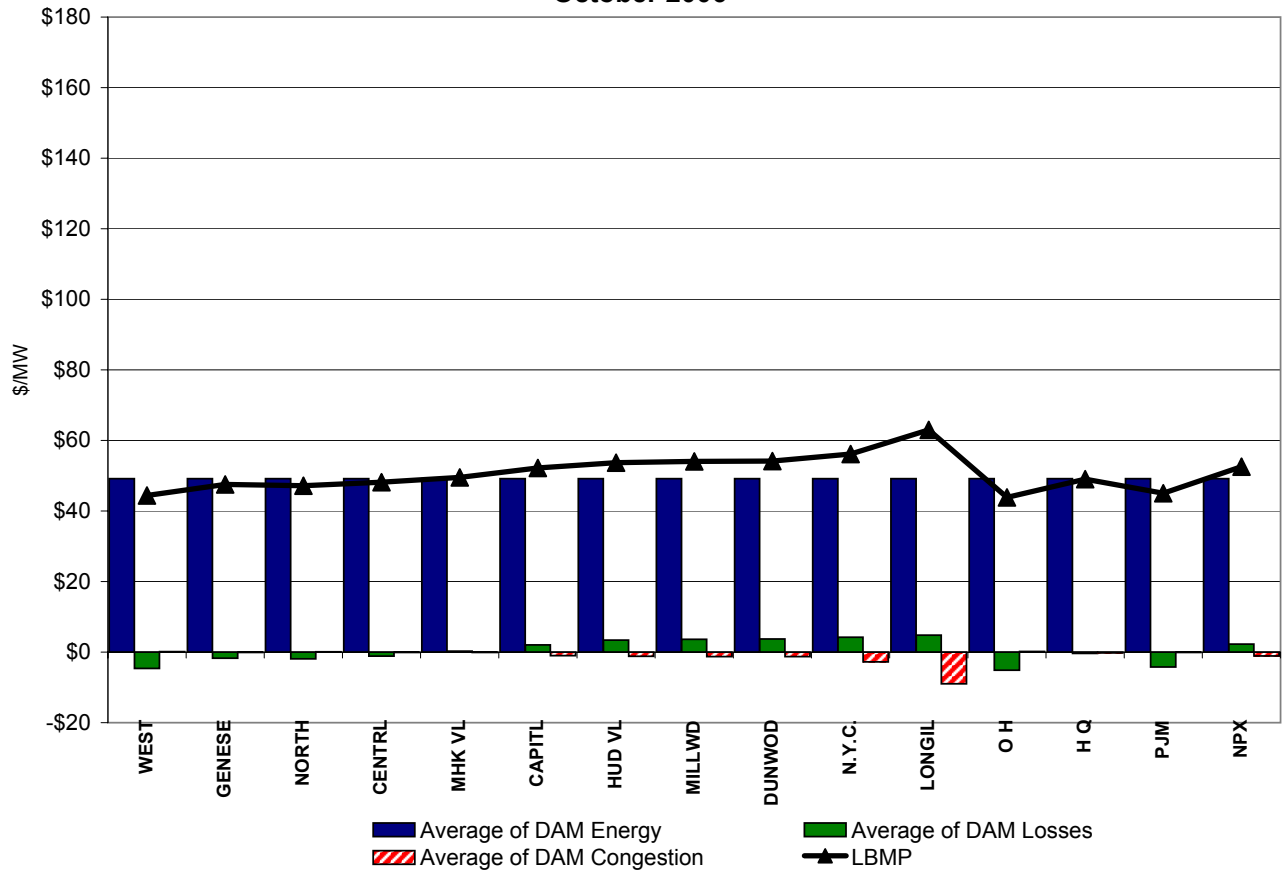
* Referred to as RTC beginning February 2005.
Prior to February 2005 known as BME or Hour Ahead Market (HAM).

Long Island Zone K Monthly Average LBMP Prices 2005 - 2006

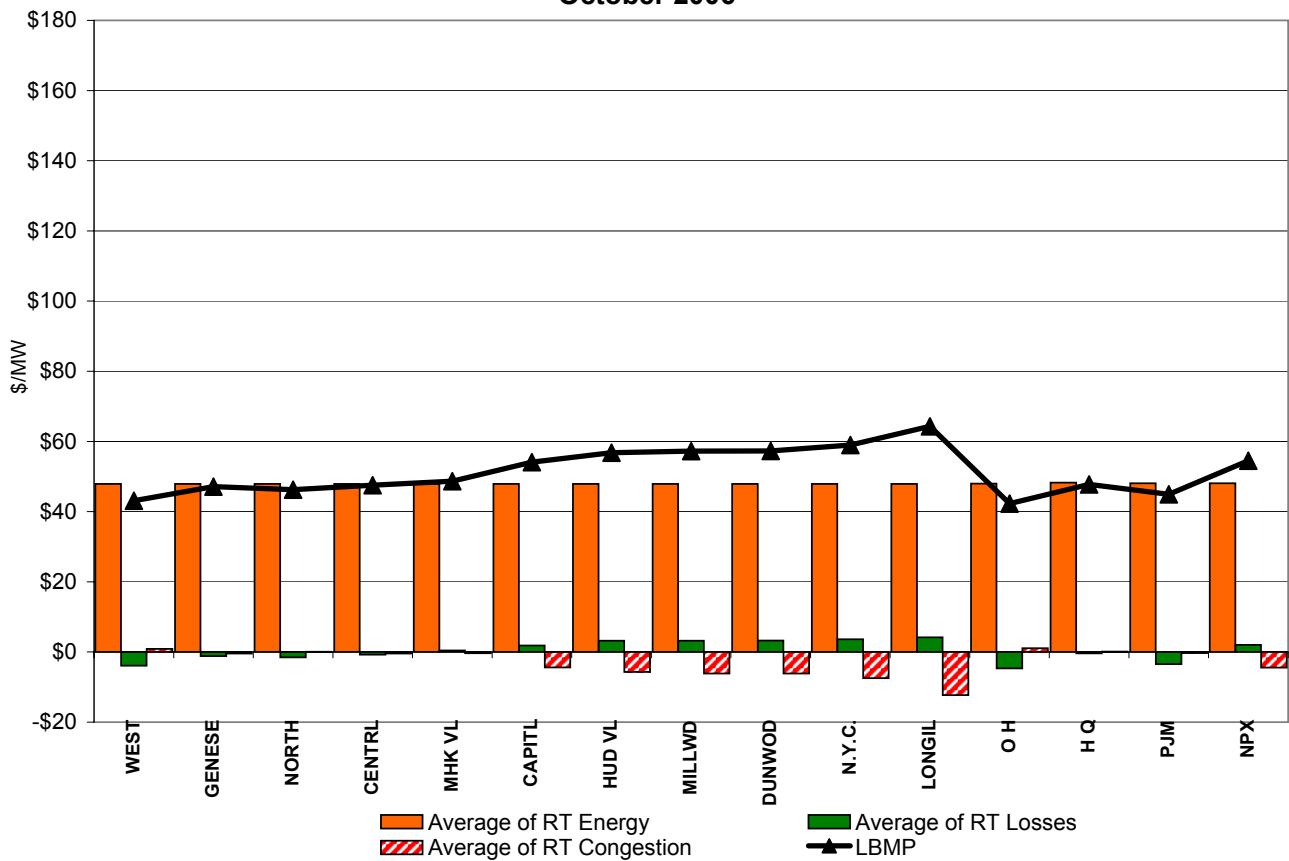


* Referred to as RTC beginning February 2005.
Prior to February 2005 known as BME or Hour Ahead Market (HAM).

**DAM Zonal Unweighted Monthly Average LBMP Components
October 2006**

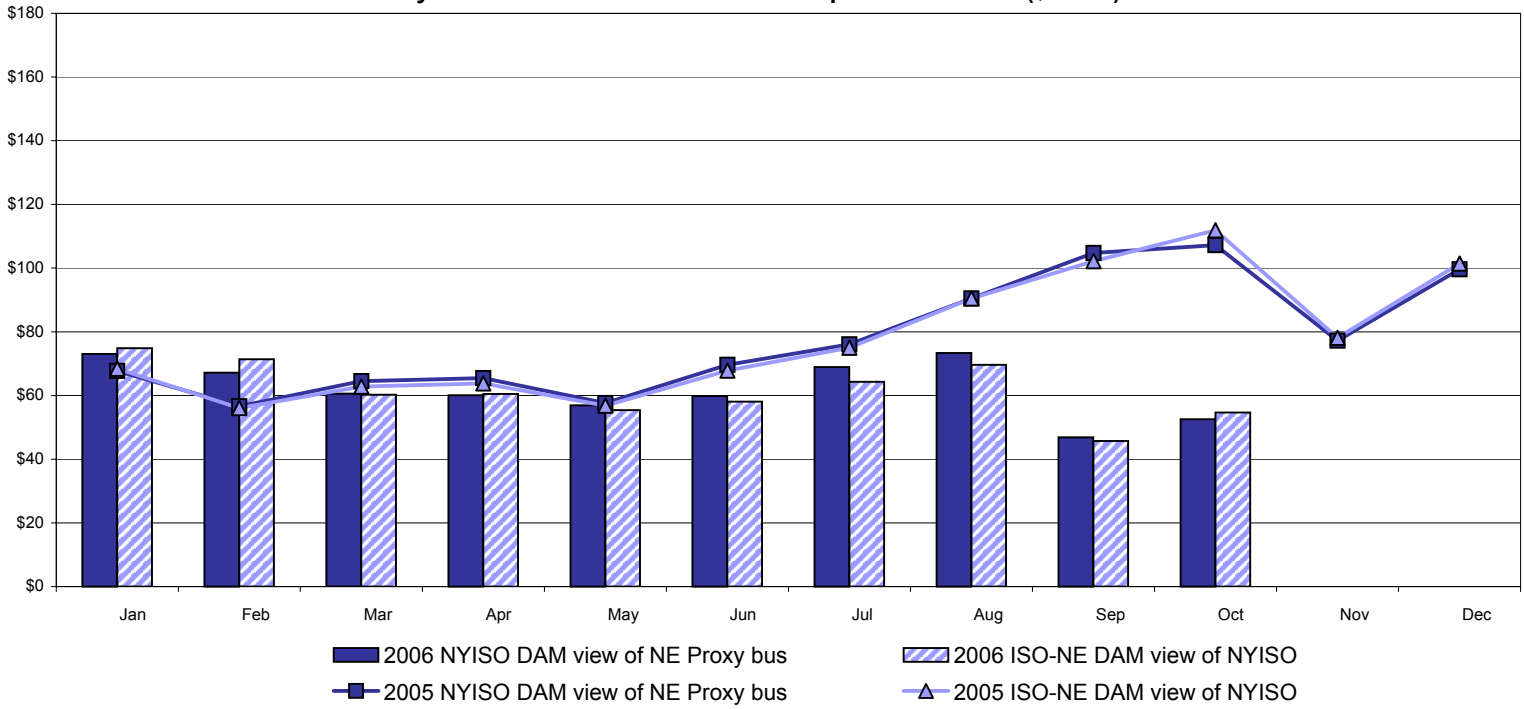


**RT Zonal Unweighted Monthly Average LBMP Components
October 2006**

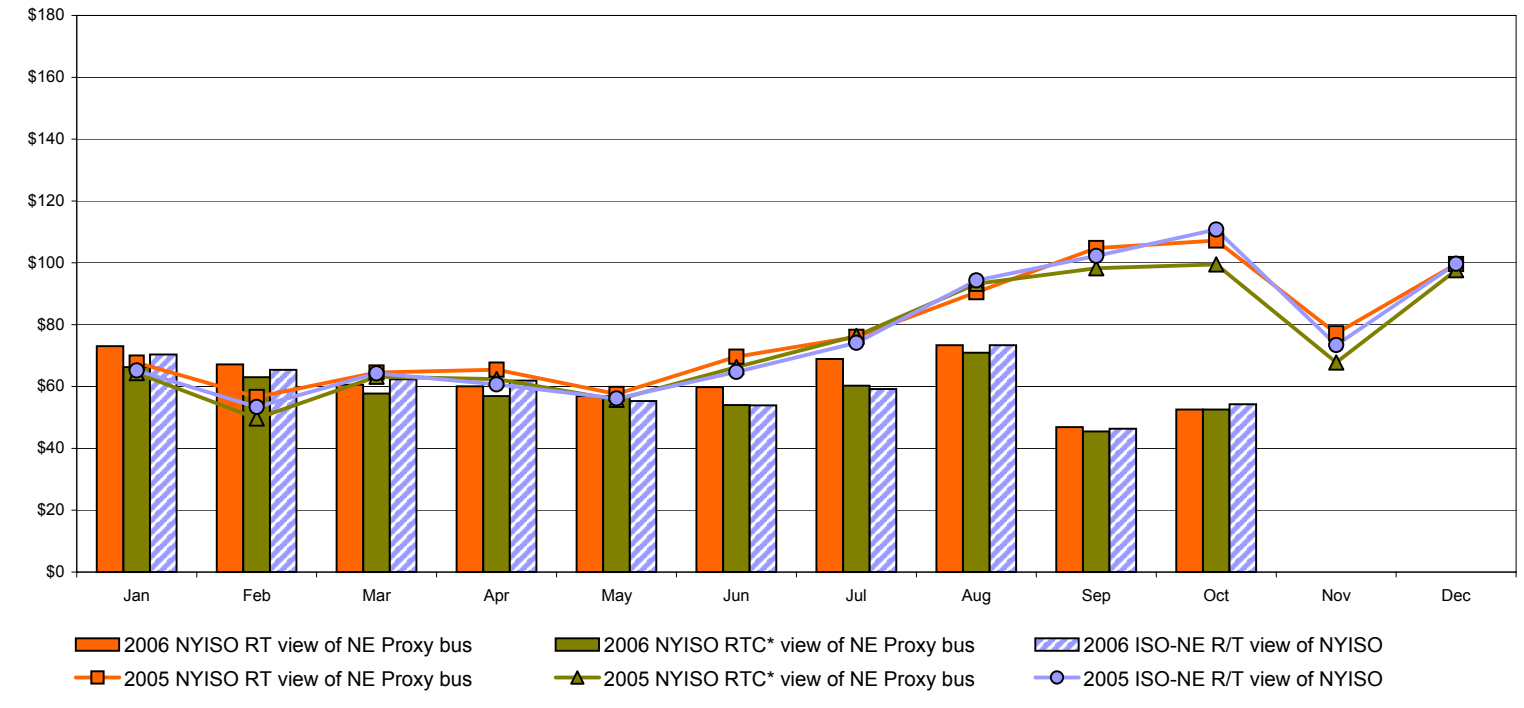


External Comparison ISO-New England

Day Ahead Market External Zone Comparison: ISO-NE (\$/MWh)



Real Time Market External Zone Comparison: ISO-NE (\$/MWh)



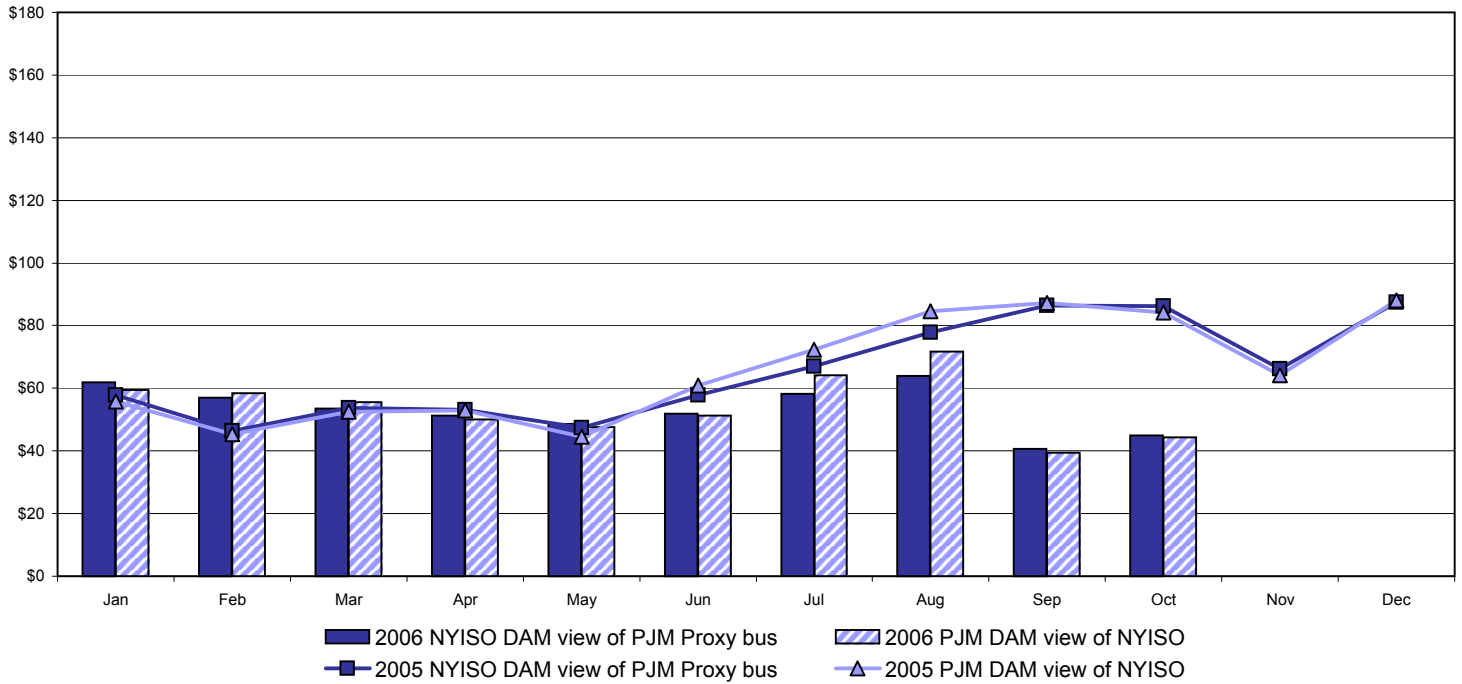
Note:

ISO-NE Forecast is an advisory posting @ 18:00 day before.
 The DAM and R/T prices at the Roseton interface are used for ISO-NE.
 The DAM and R/T prices at the SandyPond interface are used for NYISO.

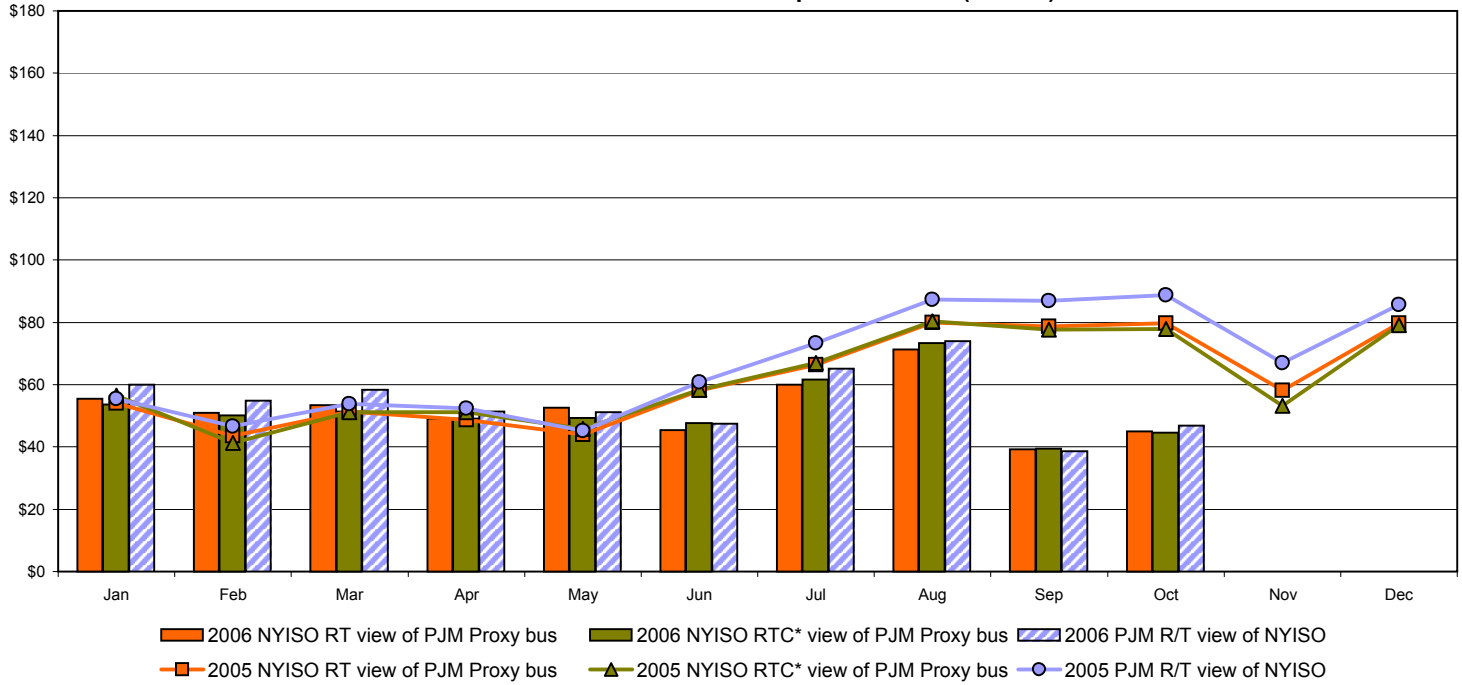
* Referred to as RTC beginning February 2005.
 Prior to February 2005 known as BME or Hour Ahead Market (HAM).

External Comparison PJM

Day Ahead Market External Zone Comparison - PJM (\$/MWh)

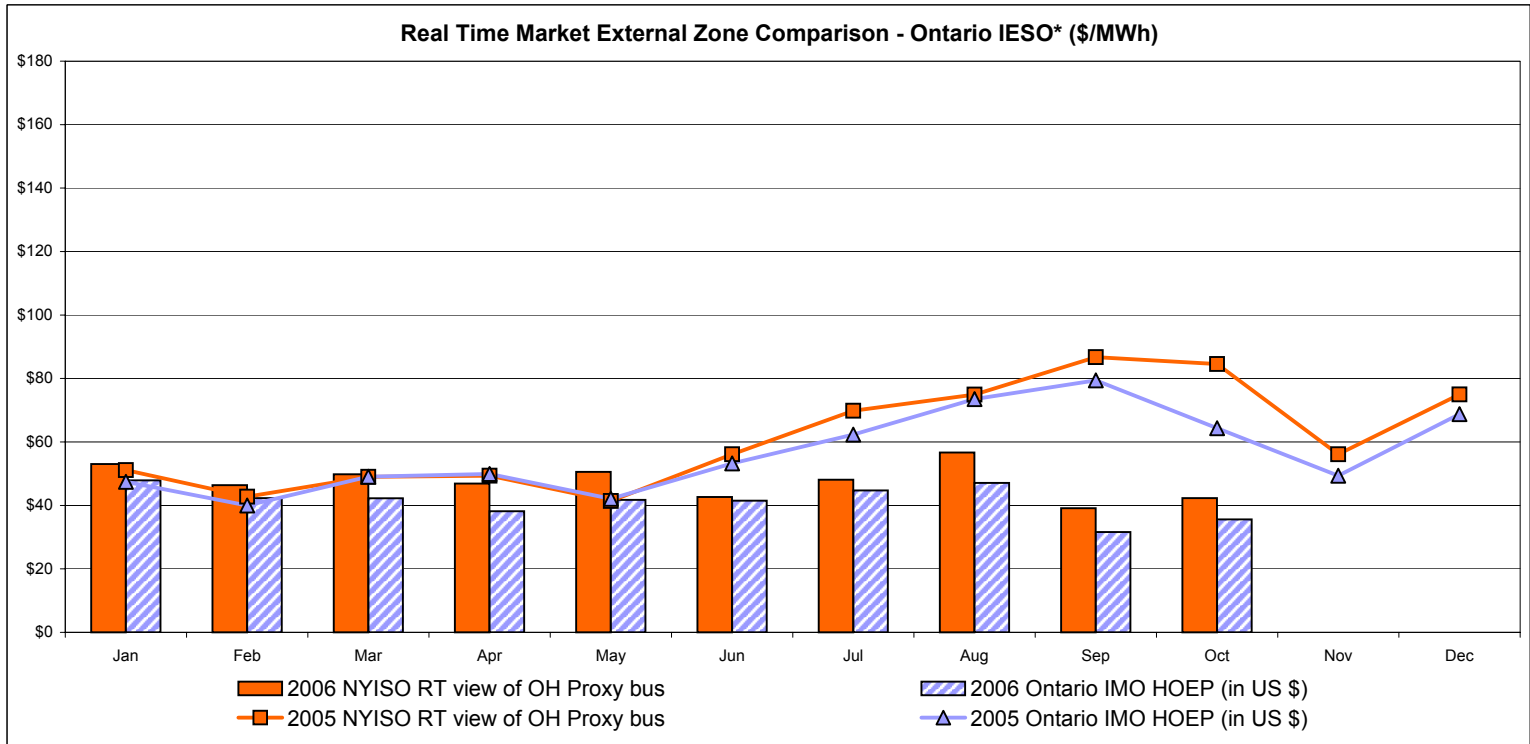
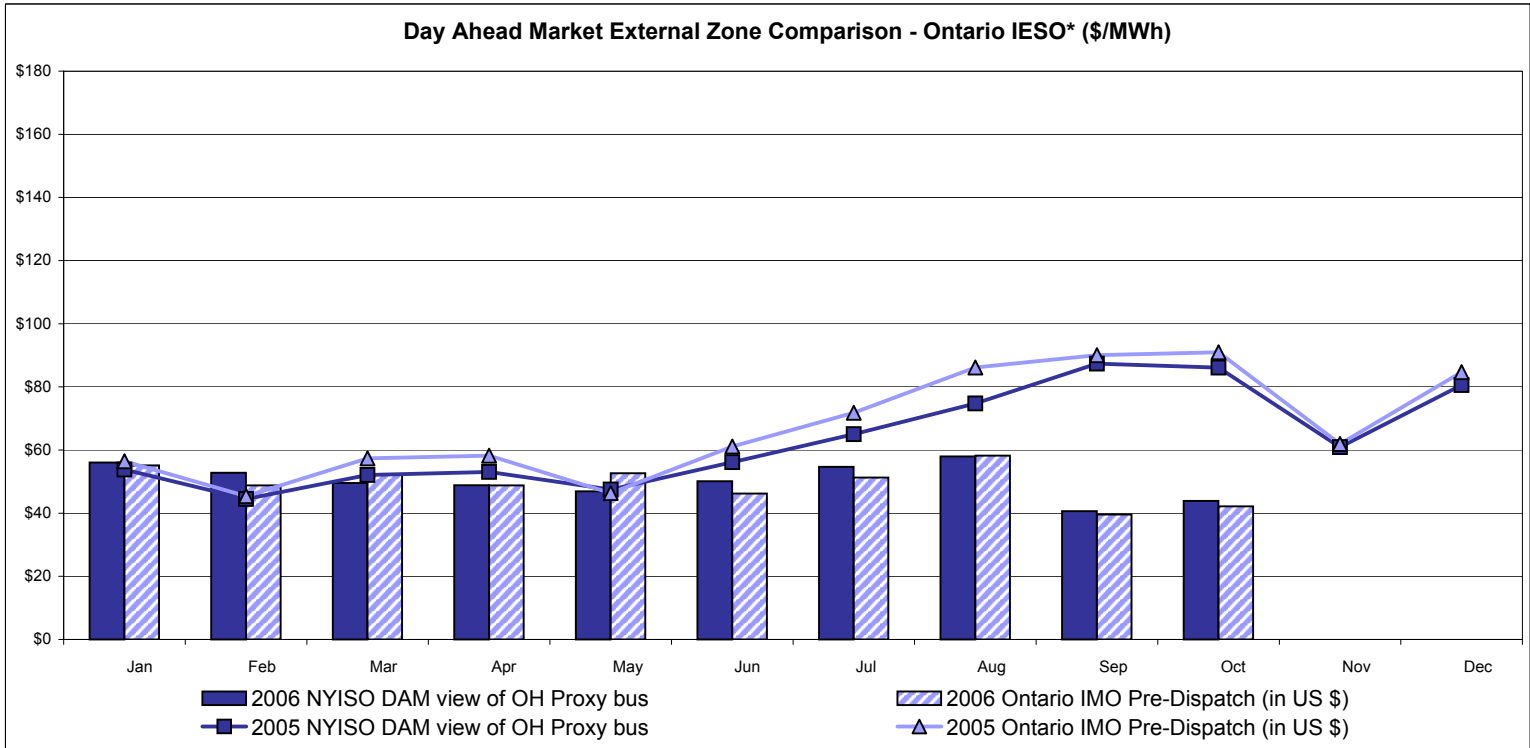


Real Time Market External Zone Comparison - PJM (\$/MWh)



* Referred to as RTC beginning February 2005.
Prior to February 2005 known as BME or Hour Ahead Market (HAM).

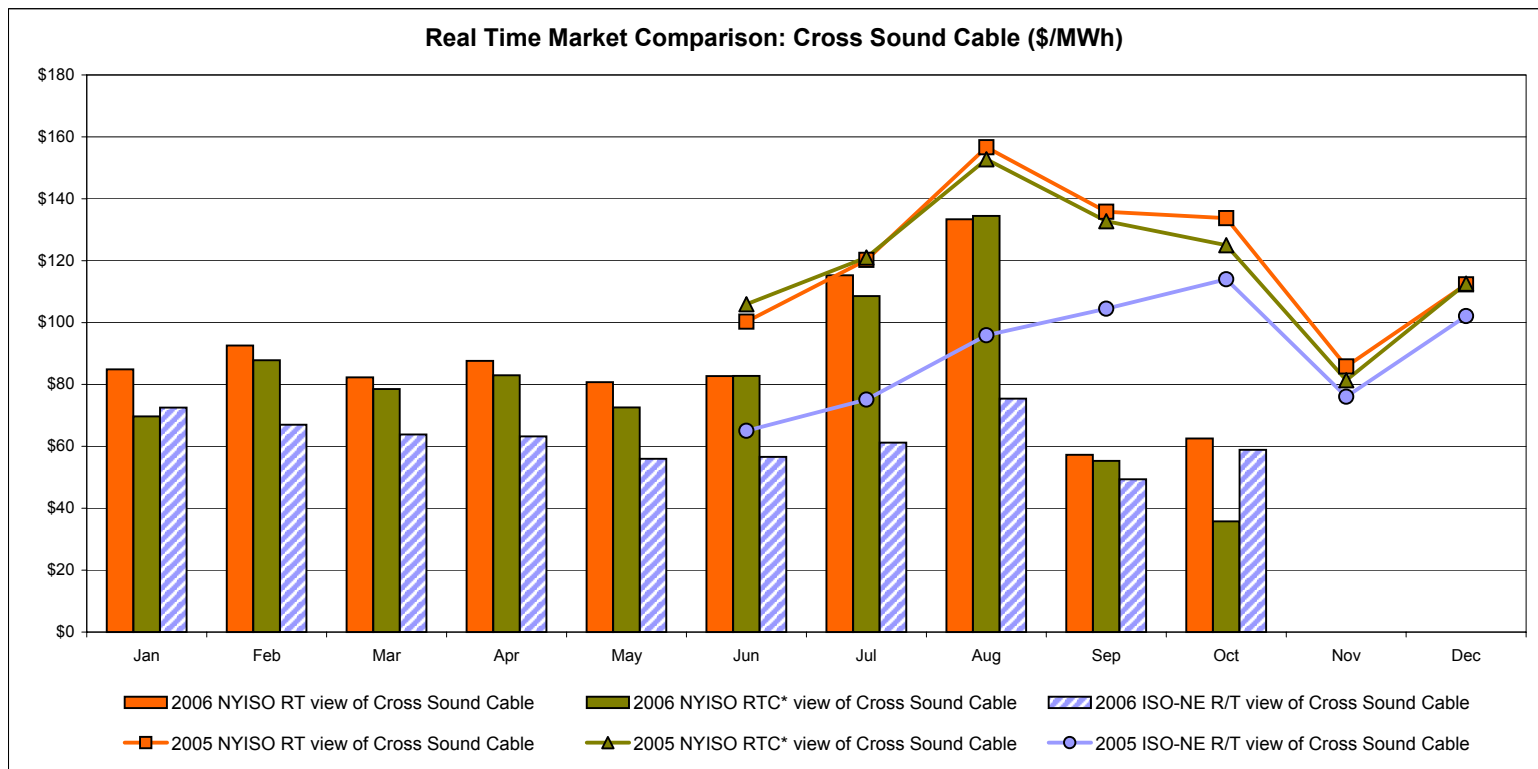
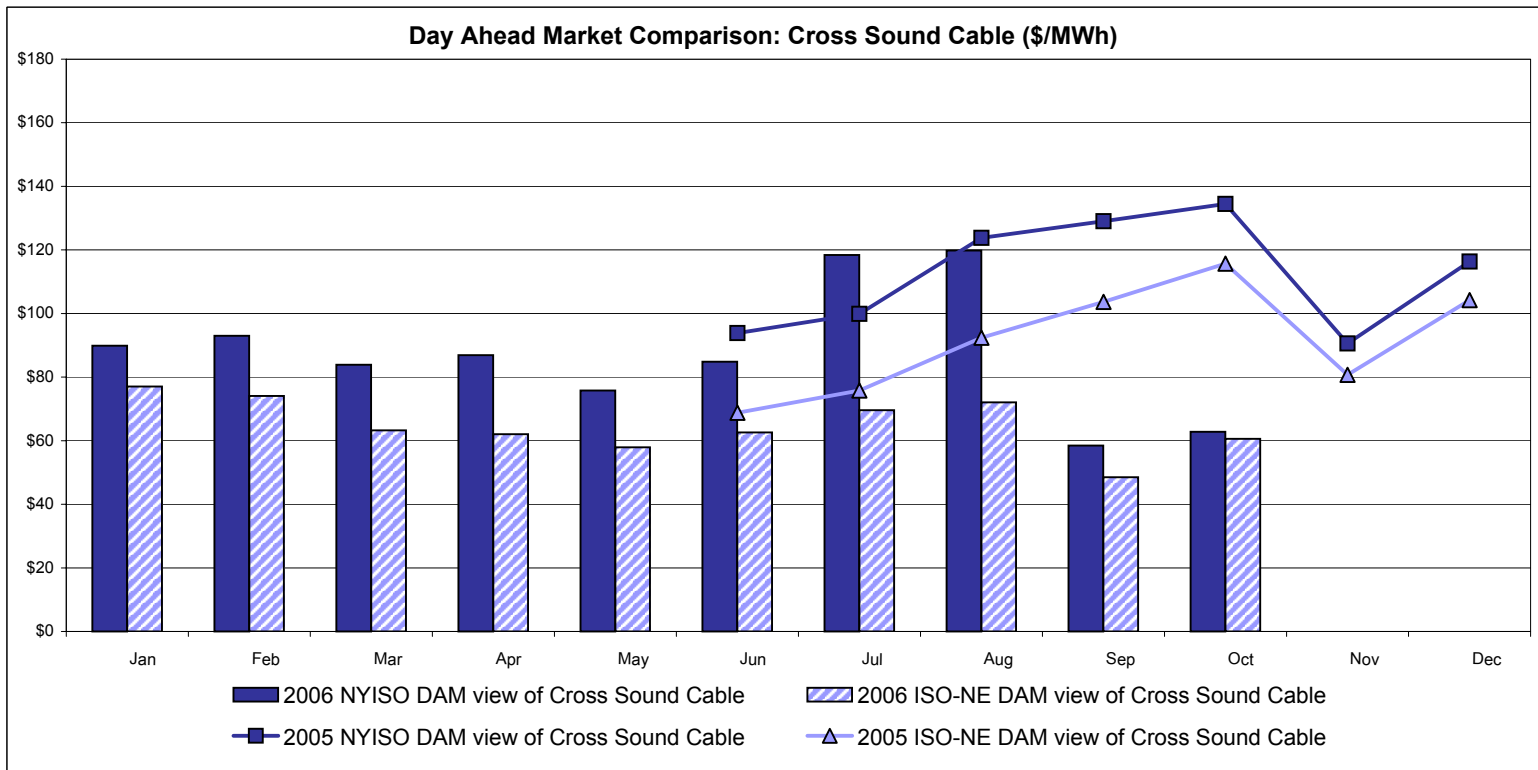
External Comparison Ontario IESO*



Notes: Exchange factor used for October 2006 was .89 to US \$
 HOEP: Hourly Ontario Energy Price
 Pre-Dispatch: Projected Energy Price

* Independent Electricity System Operator formerly known as the Independent Electricity Market Operator (IMO).

External Controllable Line: Cross Sound Cable (New England)



Note:

ISO-NE Forecast is an advisory posting @ 18:00 day before.
 The DAM and R/T prices at the Shorham138 99 interface are used for ISO-NE.
 The DAM and R/T prices at the CSC interface are used for NYISO.

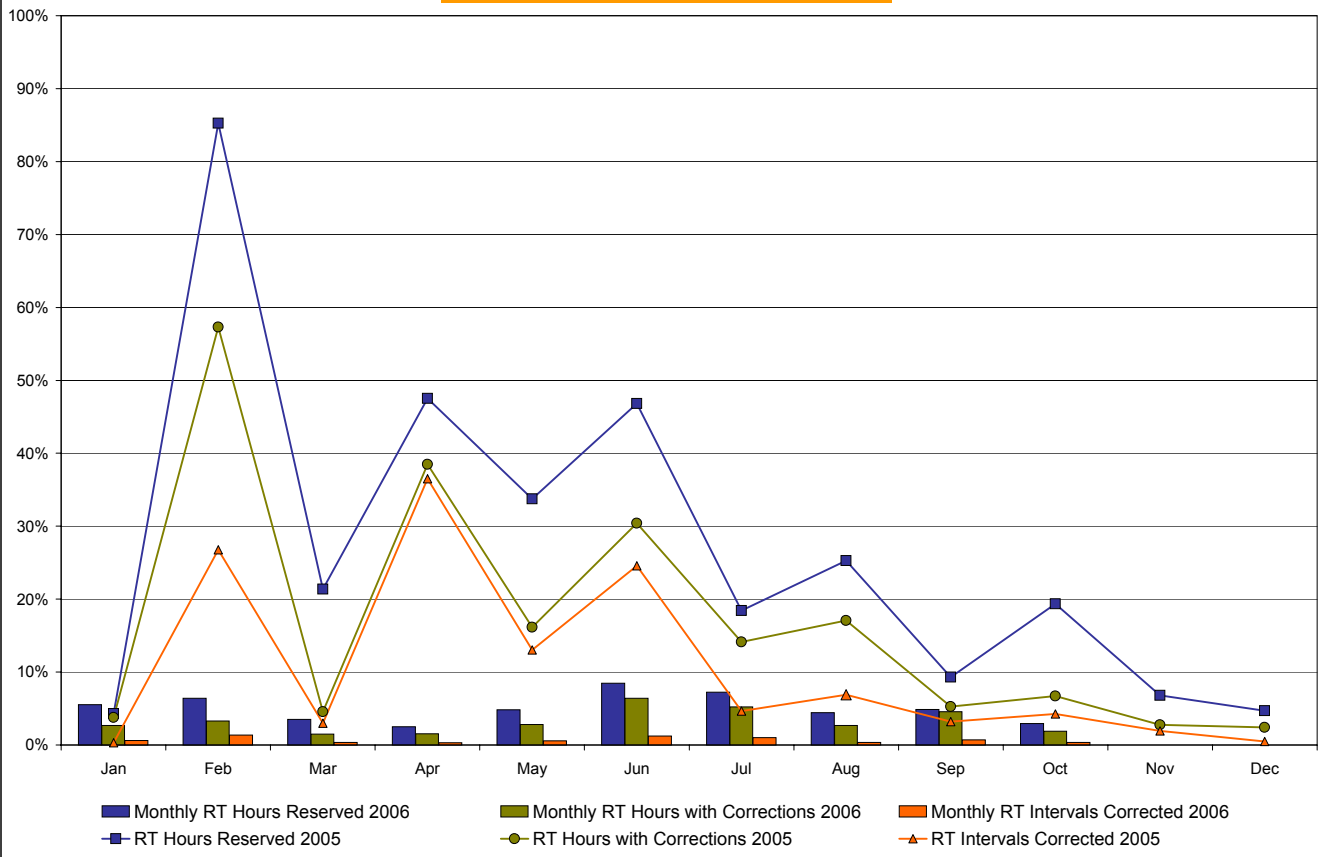
* Referred to as RTC beginning February 2005.
 Prior to February 2005 known as BME or Hour Ahead Market (HAM).

NYISO Real Time Price Correction Statistics

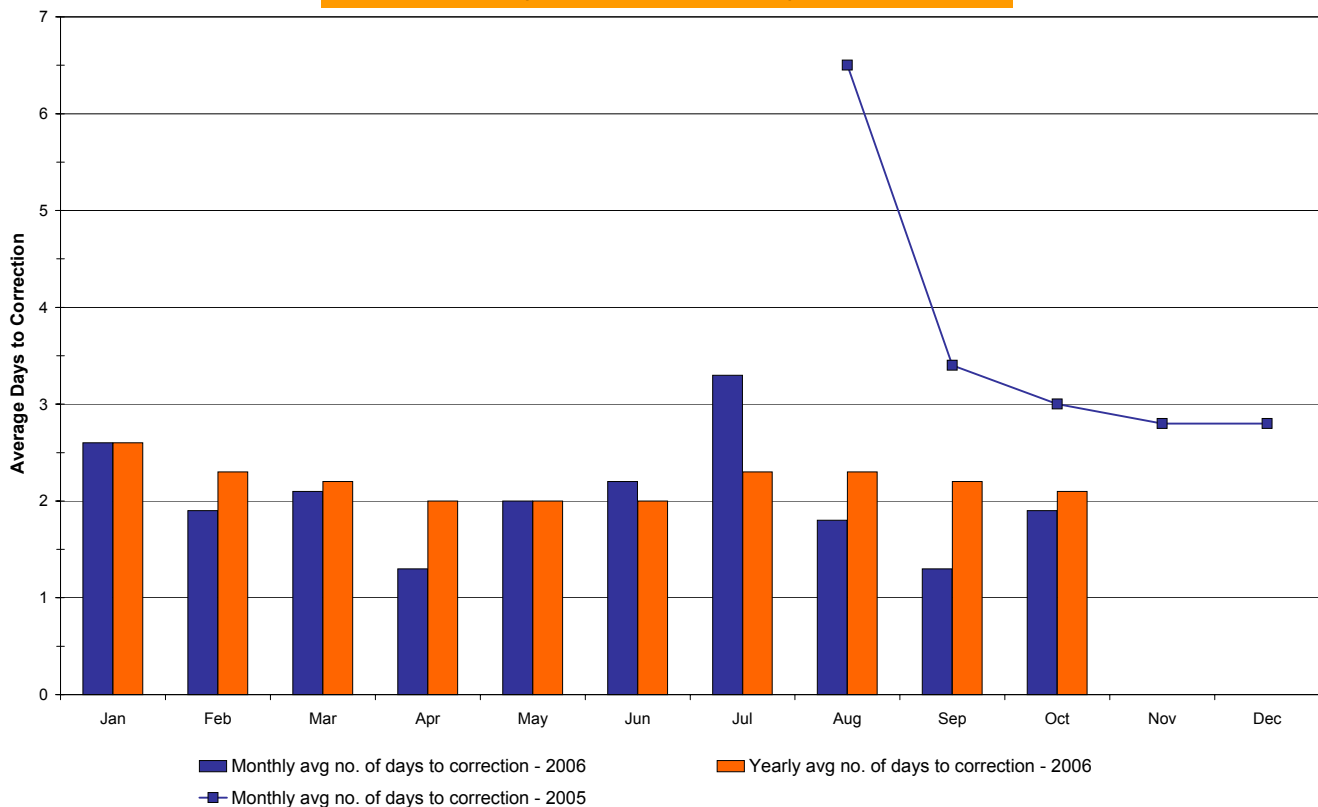
2006		<u>January</u>	<u>February</u>	<u>March</u>	<u>April</u>	<u>May</u>	<u>June</u>	<u>July</u>	<u>August</u>	<u>September</u>	<u>October</u>	<u>November</u>	<u>December</u>
Hour Corrections													
Number of hours with corrections	in the month	20	22	11	11	21	46	39	20	33	14		
Number of hours	in the month	744	672	744	720	744	720	744	744	720	744		
% of hours with corrections	in the month	2.69%	3.27%	1.48%	1.53%	2.82%	6.39%	5.24%	2.69%	4.58%	1.88%		
% of hours with corrections	year-to-date	2.69%	2.97%	2.45%	2.22%	2.35%	3.02%	3.34%	3.26%	3.40%	3.25%		
Interval Corrections													
Number of intervals corrected	in the month	54	112	33	27	51	107	92	31	63	30		
Number of intervals	in the month	9,004	8,129	9,035	8,779	9,037	8,742	9,083	9,088	8,776	9,021		
% of intervals corrected	in the month	0.60%	1.38%	0.37%	0.31%	0.56%	1.22%	1.01%	0.34%	0.72%	0.33%		
% of intervals corrected	year-to-date	0.60%	0.97%	0.76%	0.65%	0.63%	0.73%	0.77%	0.72%	0.72%	0.68%		
Hours Reserved													
Number of hours reserved	in the month	41	43	26	18	36	61	54	33	35	22		
Number of hours	in the month	744	672	744	720	744	720	744	744	720	744		
% of hours reserved	in the month	5.51%	6.40%	3.49%	2.50%	4.84%	8.47%	7.26%	4.44%	4.86%	2.96%		
% of hours reserved	year-to-date	5.51%	5.93%	5.09%	4.44%	4.53%	5.18%	5.48%	5.35%	5.30%	5.06%		
Days to Correction *													
Avg. number of days to correction	in the month	2.6	1.9	2.1	1.3	2.0	2.2	3.3	1.8	1.3	1.9		
Avg. number of days to correction	year-to-date	2.6	2.3	2.2	2.0	2.0	2.0	2.3	2.3	2.2	2.1		
Days Without Corrections													
Days without corrections	in the month	19	18	24	20	21	15	13	20	20	23		
Days without corrections	year-to-date	19	37	61	81	102	117	130	150	170	193		
2005		<u>January</u>	<u>February</u>	<u>March</u>	<u>April</u>	<u>May</u>	<u>June</u>	<u>July</u>	<u>August</u>	<u>September</u>	<u>October</u>	<u>November</u>	<u>December</u>
Hour Corrections													
Number of hours with corrections	in the month	28	385	34	277	120	219	105	127	38	50	20	18
Number of hours	in the month	744	672	744	720	744	720	744	744	720	744	720	744
% of hours with corrections	in the month	3.76%	57.29%	4.57%	38.47%	16.13%	30.42%	14.11%	17.07%	5.28%	6.72%	2.78%	2.42%
% of hours with corrections	year-to-date	3.76%	29.17%	20.69%	25.14%	23.29%	24.47%	22.96%	22.21%	20.34%	18.96%	17.50%	16.22%
Interval Corrections													
Number of intervals corrected	in the month	37	2,177	266	3,182	1,170	2,145	421	625	281	386	167	43
Number of intervals	in the month	11,811	8,131	8,961	8,711	8,972	8,729	9,024	9,065	8,741	9,029	8,721	9,115
% of intervals corrected	in the month	0.31%	26.77%	2.97%	36.53%	13.04%	24.57%	4.67%	6.89%	3.21%	4.28%	1.91%	0.47%
% of intervals corrected	year-to-date	0.31%	11.10%	8.58%	15.05%	14.67%	16.23%	14.61%	13.65%	12.54%	11.72%	10.87%	10.00%
Hours Reserved													
Number of hours reserved	in the month	32	573	159	342	251	337	137	188	67	144	49	35
Number of hours	in the month	744	672	744	720	744	720	744	744	720	744	720	744
% of hours reserved	in the month	4.30%	85.27%	21.37%	47.50%	33.74%	46.81%	18.41%	25.27%	9.31%	19.35%	6.81%	4.70%
% of hours reserved	year-to-date	4.30%	42.73%	35.37%	38.40%	37.44%	39.00%	35.99%	34.62%	31.84%	30.56%	28.43%	26.42%
Days to Correction *													
Avg. number of days to correction	in the month	-	-	-	-	-	-	-	6.5	3.4	3.0	2.8	2.8
Avg. number of days to correction	year-to-date	-	-	-	-	-	-	-	-	-	-	-	-
Days Without Corrections													
Days without corrections	in the month	12	4	16	3	4	4	6	6	17	17	22	19
Days without corrections	year-to-date	12	16	32	35	39	43	49	55	72	89	111	130

* Calendar days from reservation date. Data available from August 2005.

Percentage of Real-Time Corrections

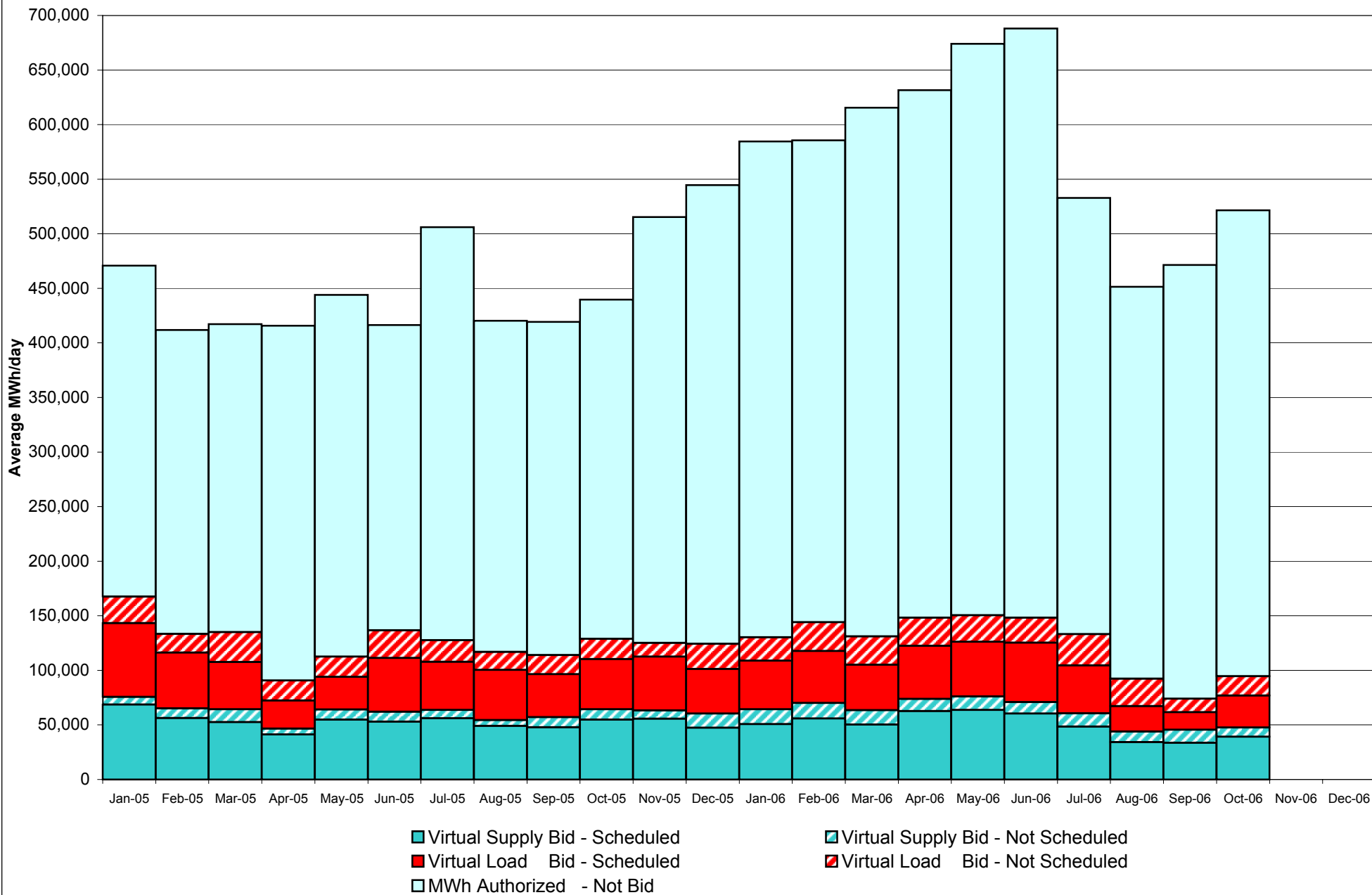


Annual average time period for making Price Corrections (from reservation date) *

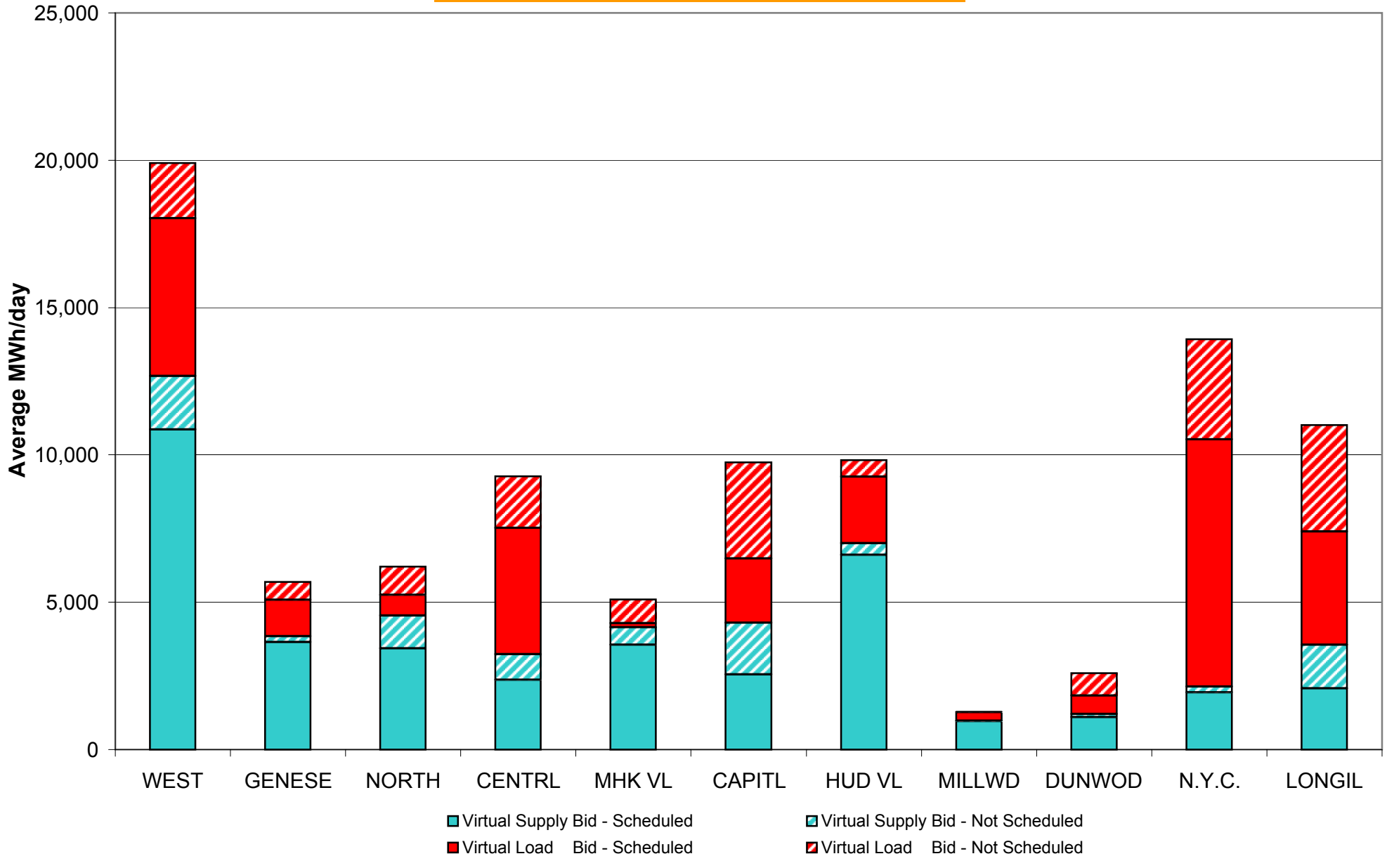


* Calendar days from reservation date. Data available from August 2005.

NYISO Virtual Trading Average MWh per day



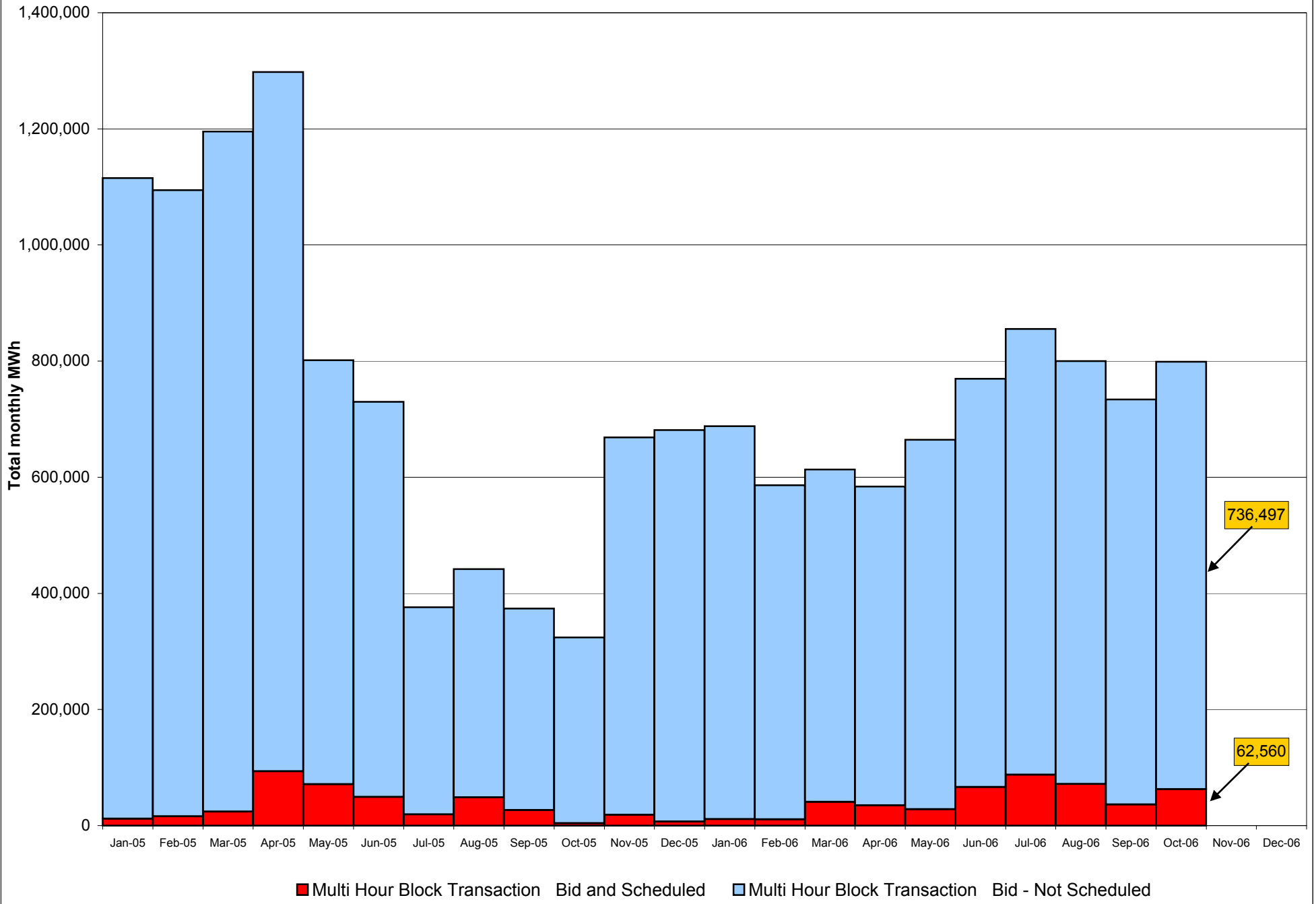
Virtual Load and Supply Zonal Statistics October 2006



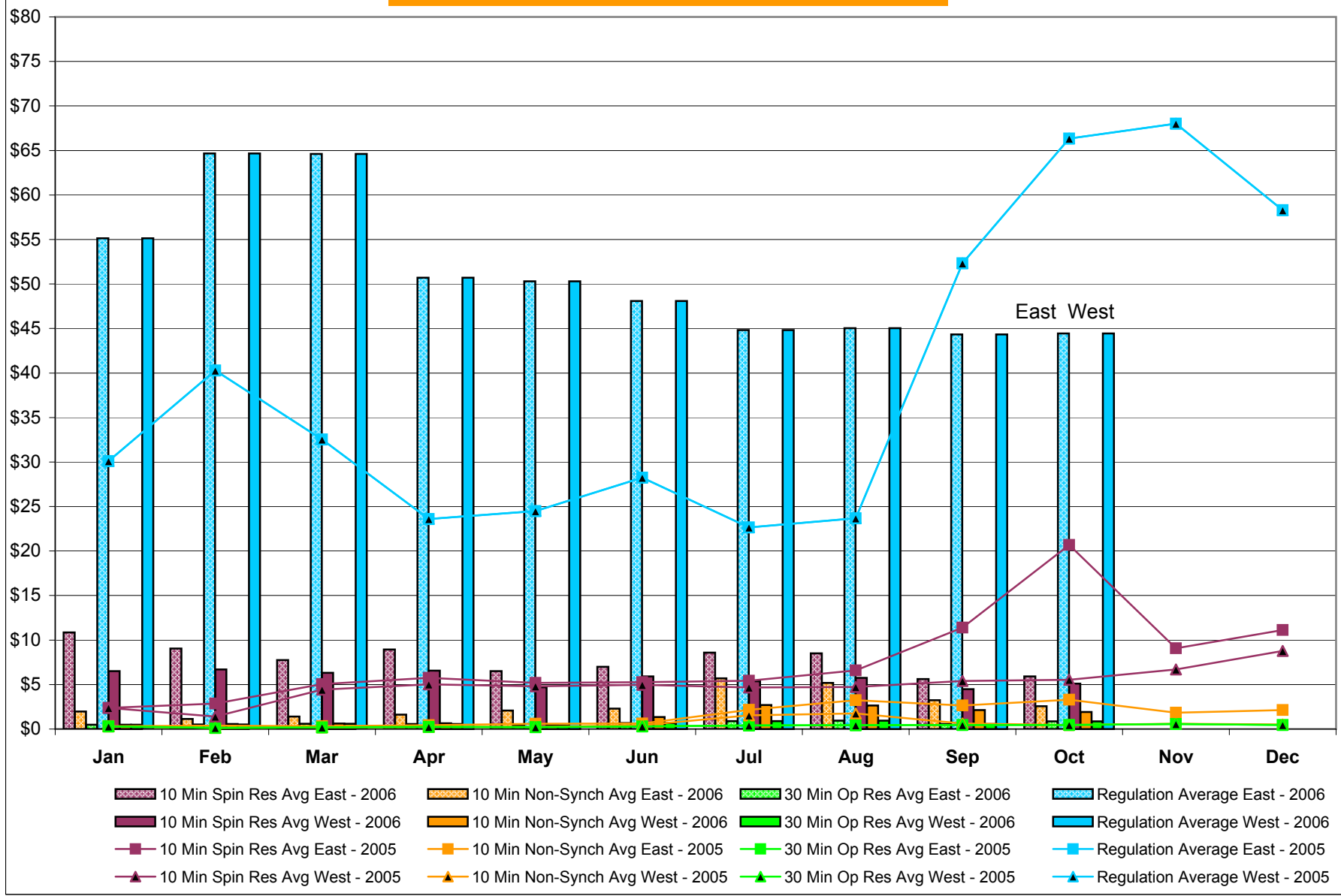
Virtual Load and Supply Zonal Statistics (Average MWh/day) - 2006

		Virtual Load Bid		Virtual Supply Bid				Virtual Load Bid		Virtual Supply Bid				Virtual Load Bid		Virtual Supply Bid				
Zone	Date	Scheduled	Not Scheduled	Scheduled	Not Scheduled	Zone	Date	Scheduled	Not Scheduled	Scheduled	Not Scheduled	Zone	Date	Scheduled	Not Scheduled	Scheduled	Not Scheduled			
WEST	Jan-06	5,890	2,304	11,610	3,141	MHK VL	Jan-06	46	902	5,884	1,636	DUNWOD	Jan-06	745	644	3,267	26			
	Feb-06	5,103	3,356	10,907	3,042		Feb-06	17	930	6,935	891		Feb-06	1,714	399	2,441	42			
	Mar-06	3,237	1,807	13,710	2,979		Mar-06	42	932	4,940	937		Mar-06	1,097	47	2,163	27			
	Apr-06	3,206	1,676	16,016	2,317		Apr-06	3	841	8,714	579		Apr-06	1,144	722	3,403	60			
	May-06	3,602	1,641	13,210	1,806		May-06	40	1,021	8,610	759		May-06	1,056	546	3,949	670			
	Jun-06	2,538	2,185	11,018	1,685		Jun-06	407	892	7,818	989		Jun-06	3,095	748	2,761	45			
	Jul-06	1,496	1,960	8,348	1,405		Jul-06	226	932	6,813	1,039		Jul-06	2,819	1,314	1,137	538			
	Aug-06	2,097	820	6,754	935		Aug-06	35	892	4,793	802		Aug-06	1,118	333	742	223			
	Sep-06	2,478	1,491	4,679	1,637		Sep-06	25	891	3,675	1,507		Sep-06	705	730	1,453	218			
	Oct-06	5,365	1,872	10,860	1,810		Oct-06	146	800	3,560	584		Oct-06	635	757	1,099	101			
	Nov-06						Nov-06						Nov-06							
	Dec-06						Dec-06						Dec-06							
GENESE	Jan-06	1,831	708	6,806	73	CAPITL	Jan-06	3,624	1,646	1,192	48	N.Y.C.	Jan-06	19,500	4,668	1,330	3,334			
	Feb-06	2,434	208	6,652	55		Feb-06	5,155	2,682	1,584	65		Feb-06	16,986	7,228	2,463	2,793			
	Mar-06	1,856	838	6,734	53		Mar-06	2,850	3,171	643	59		Mar-06	12,401	7,131	4,092	2,202			
	Apr-06	3,478	92	6,693	205		Apr-06	2,915	3,767	1,584	847		Apr-06	19,173	6,820	1,189	1,699			
	May-06	4,049	18	8,510	24		May-06	3,690	3,159	877	2,082		May-06	19,528	6,539	402	1,064			
	Jun-06	3,158	44	6,400	118		Jun-06	2,750	2,967	2,076	1,950		Jun-06	20,192	5,844	437	598			
	Jul-06	2,441	155	5,610	163		Jul-06	1,883	3,011	2,044	1,583		Jul-06	20,370	9,037	729	1,946			
	Aug-06	2,371	75	5,058	69		Aug-06	1,076	2,869	2,078	1,432		Aug-06	9,289	9,252	972	1,463			
	Sep-06	1,865	189	7,470	167		Sep-06	563	2,914	1,832	1,955		Sep-06	4,400	1,687	1,599	818			
	Oct-06	1,240	612	3,650	187		Oct-06	2,186	3,260	2,544	1,755		Oct-06	8,378	3,412	1,940	201			
	Nov-06						Nov-06						Nov-06							
	Dec-06						Dec-06						Dec-06							
NORTH	Jan-06	262	22	5,961	1,658	HUD VL	Jan-06	2,086	2,026	8,595	1,717	LONGIL	Jan-06	8,207	6,064	1,091	1,891			
	Feb-06	139	101	6,749	2,570		Feb-06	3,722	1,834	8,989	1,964		Feb-06	9,345	8,197	1,088	2,511			
	Mar-06	264	21	7,069	2,838		Mar-06	8,898	1,851	5,128	1,716		Mar-06	8,449	10,059	991	2,357			
	Apr-06	96	695	8,243	1,926		Apr-06	9,888	1,640	10,242	1,034		Apr-06	7,291	8,424	930	1,750			
	May-06	9	921	7,895	1,596		May-06	8,934	1,330	12,005	1,311		May-06	8,188	7,792	1,125	1,939			
	Jun-06	204	910	9,925	1,660		Jun-06	7,728	964	10,828	872		Jun-06	11,324	7,000	1,573	1,663			
	Jul-06	14	896	8,332	1,340		Jul-06	1,881	1,058	8,272	1,389		Jul-06	8,917	8,823	1,657	1,693			
	Aug-06	8	888	5,238	1,971		Aug-06	632	871	4,617	572		Aug-06	6,003	7,838	887	1,407			
	Sep-06	169	889	3,403	1,744		Sep-06	420	430	3,938	709		Sep-06	5,219	2,062	972	2,107			
	Oct-06	711	951	3,432	1,109		Oct-06	2,263	561	6,599	398		Oct-06	3,852	3,616	2,078	1,471			
	Nov-06						Nov-06						Nov-06							
	Dec-06						Dec-06						Dec-06							
CENTRL	Jan-06	713	28	3,870	103	MILLWD	Jan-06	1,531	2,596	1,065	11	NYISO	Jan-06	44,436	21,609	50,671	13,639			
	Feb-06	395	27	7,081	165		Feb-06	2,540	1,560	1,067	24		Feb-06	47,550	26,523	55,956	14,122			
	Mar-06	581	28	4,683	31		Mar-06	1,799	135	189	7		Mar-06	41,475	26,020	50,342	13,205			
	Apr-06	673	882	4,838	522		Apr-06	943	97	904	28		Apr-06	48,811	25,655	62,755	10,967			
	May-06	674	1,101	4,694	945		May-06	453	210	2,346	169		May-06	50,222	24,279	63,624	12,364			
	Jun-06	578	1,098	6,115	900		Jun-06	2,543	95	1,352	118		Jun-06	54,518	22,746	60,303	10,597			
	Jul-06	1,032	1,377	4,672	687		Jul-06	2,935	61	804	335		Jul-06	44,013	28,624	48,419	12,117			
	Aug-06	189	1,083	2,770	638		Aug-06	607	91	393	22		Aug-06	23,425	25,012	34,301	9,533			
	Sep-06	94	1,206	3,815	1,103		Sep-06	102	3	677	67		Sep-06	16,039	12,492	33,512	12,032			
	Oct-06	4,274	1,755	2,358	881		Oct-06	285	16	967	16		Oct-06	29,333	17,612	39,088	8,512			
	Nov-06						Nov-06						Nov-06							
	Dec-06						Dec-06						Dec-06							

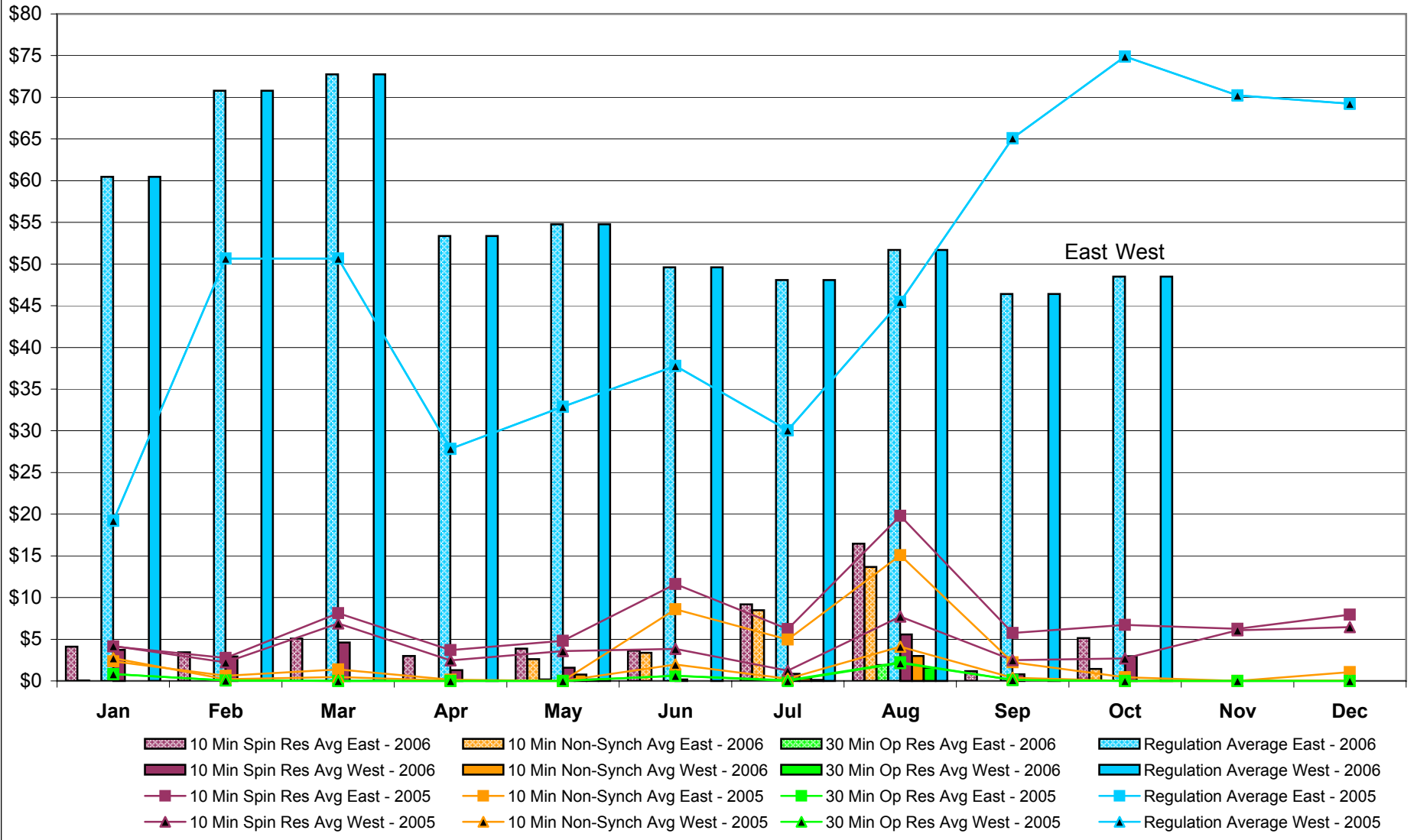
NYISO Multi Hour Block Transactions Monthly Total MWh



NYISO Monthly Average Ancillary Service Prices Day Ahead Market 2005 - 2006

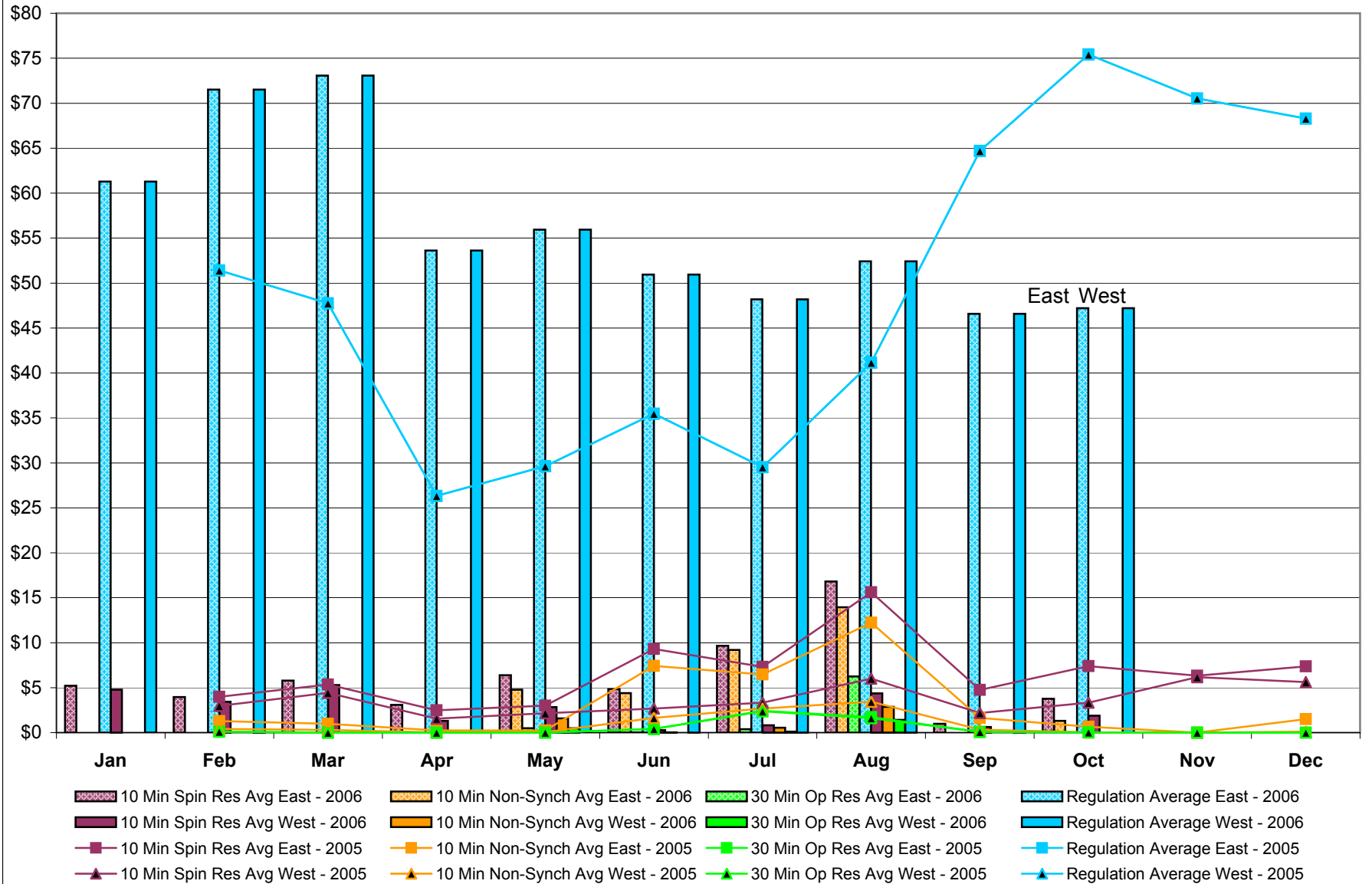


NYISO Monthly Average Ancillary Service Prices RTC* Market 2005 - 2006



* Referred to as RTC beginning February 2005
Prior to February 2005 known as BME or Hour Ahead Market (HAM)

NYISO Monthly Average Ancillary Service Prices Real Time Market* 2005 - 2006



* The Real Time Ancillary Market began in February 2005

NYISO Markets Ancillary Services Statistics - Unweighted Price (\$/MWH)

2006	<u>January</u>	<u>February</u>	<u>March</u>	<u>April</u>	<u>May</u>	<u>June</u>	<u>July</u>	<u>August</u>	<u>September</u>	<u>October</u>	<u>November</u>	<u>December</u>
<u>Day Ahead Market</u>												
10 Min Spin East	10.86	9.06	7.76	8.94	6.52	6.98	8.60	8.50	5.62	5.90		
10 Min Spin West	6.50	6.70	6.32	6.56	4.71	5.92	5.37	5.76	4.49	5.11		
10 Min Non Synch East	1.97	1.15	1.39	1.63	2.07	2.31	5.71	5.19	3.25	2.55		
10 Min Non Synch West	0.50	0.56	0.62	0.66	0.40	1.34	2.69	2.64	2.13	1.90		
30 Min East	0.48	0.52	0.59	0.58	0.38	0.66	0.89	0.95	0.56	0.87		
30 Min West	0.48	0.52	0.59	0.58	0.38	0.66	0.89	0.95	0.56	0.87		
Regulation East	55.13	64.65	64.62	50.71	50.30	48.10	44.83	45.04	44.34	44.43		
Regulation West	55.13	64.65	64.62	50.71	50.30	48.10	44.83	45.04	44.34	44.43		
<u>RTC* Market</u>												
10 Min Spin East	4.10	3.44	5.07	3.00	3.86	3.65	9.19	16.44	1.17	5.12		
10 Min Spin West	3.71	2.93	4.59	1.28	1.60	0.18	0.85	5.56	0.79	2.96		
10 Min Non Synch East	0.02	0.01	0.00	0.01	2.60	3.36	8.48	13.68	0.00	1.43		
10 Min Non Synch West	0.00	0.00	0.00	0.00	0.77	0.00	0.32	3.01	0.00	0.01		
30 Min East	0.00	0.00	0.00	0.00	0.19	0.00	0.11	1.90	0.00	0.00		
30 Min West	0.00	0.00	0.00	0.00	0.19	0.00	0.11	1.57	0.00	0.00		
Regulation East	60.46	70.79	72.76	53.37	54.76	49.60	48.08	51.68	46.42	48.49		
Regulation West	60.46	70.79	72.76	53.37	54.76	49.60	48.08	51.68	46.42	48.49		
<u>Real Time Market**</u>												
10 Min Spin East	5.20	3.96	5.78	3.07	6.38	4.84	9.66	16.81	0.98	3.76		
10 Min Spin West	4.78	3.43	5.30	1.32	2.82	0.28	0.81	4.37	0.63	1.89		
10 Min Non Synch East	0.01	0.00	0.00	0.01	4.79	4.40	9.20	13.94	0.00	1.30		
10 Min Non Synch West	0.00	0.00	0.00	0.00	1.58	0.02	0.54	2.86	0.00	0.01		
30 Min East	0.00	0.00	0.00	0.00	0.49	0.02	0.37	6.24	0.00	0.00		
30 Min West	0.00	0.00	0.00	0.00	0.49	0.01	0.12	1.41	0.00	0.00		
Regulation East	61.28	71.52	73.06	53.62	55.93	50.95	48.17	52.42	46.56	47.21		
Regulation West	61.28	71.52	73.06	53.62	55.93	50.95	48.17	52.42	46.56	47.21		
2005												
	<u>January</u>	<u>February</u>	<u>March</u>	<u>April</u>	<u>May</u>	<u>June</u>	<u>July</u>	<u>August</u>	<u>September</u>	<u>October</u>	<u>November</u>	<u>December</u>
<u>Day Ahead Market</u>												
10 Min Spin East	2.38	2.87	5.06	5.76	5.19	5.26	5.44	6.59	11.38	20.70	9.08	11.12
10 Min Spin West	2.37	1.39	4.43	5.03	4.80	4.96	4.68	4.73	5.41	5.54	6.68	8.77
10 Min Non Synch East	0.31	0.37	0.31	0.44	0.60	0.61	2.16	3.25	2.65	3.31	1.82	2.14
10 Min Non Synch West	0.31	0.13	0.20	0.24	0.23	0.43	1.54	1.75	0.63	0.47	0.59	0.52
30 Min East	0.31	0.13	0.19	0.24	0.22	0.29	0.41	0.44	0.47	0.46	0.57	0.47
30 Min West	0.31	0.13	0.19	0.24	0.22	0.29	0.41	0.44	0.47	0.46	0.57	0.47
Regulation East	30.10	40.28	32.53	23.61	24.49	28.23	22.66	23.67	52.33	66.33	68.02	58.28
Regulation West	30.10	40.28	32.53	23.61	24.49	28.23	22.66	23.67	52.33	66.33	68.02	58.28
<u>RTC* Market</u>												
10 Min Spin East	4.15	2.75	8.13	3.71	4.80	11.61	6.23	19.80	5.75	6.72	6.25	7.94
10 Min Spin West	4.20	2.23	6.90	2.46	3.58	3.84	1.24	7.72	2.50	2.69	6.06	6.45
10 Min Non Synch East	2.35	0.62	1.38	0.14	0.00	8.58	4.96	15.08	2.22	0.44	0.01	1.07
10 Min Non Synch West	2.72	0.21	0.47	0.03	0.00	1.96	0.25	4.09	0.37	0.00	0.00	0.06
30 Min East	0.83	0.05	0.00	0.00	0.00	0.62	0.08	2.22	0.12	0.00	0.00	0.00
30 Min West	0.83	0.05	0.00	0.00	0.00	0.61	0.00	2.15	0.12	0.00	0.00	0.00
Regulation East	19.23	50.66	50.65	27.85	32.87	37.80	30.07	45.47	65.10	74.90	70.23	69.23
Regulation West	19.23	50.66	50.65	27.85	32.87	37.80	30.07	45.47	65.10	74.90	70.23	69.23
<u>Real Time Market**</u>												
10 Min Spin East	-	3.99	5.34	2.47	3.00	9.30	7.30	15.60	4.75	7.40	6.32	7.36
10 Min Spin West	-	2.97	4.42	1.56	2.16	2.69	3.33	5.99	2.19	3.34	6.16	5.62
10 Min Non Synch East	-	1.27	0.98	0.25	0.24	7.43	6.46	12.22	1.63	0.65	0.00	1.49
10 Min Non Synch West	-	0.41	0.29	0.02	0.07	1.63	2.68	3.44	0.33	0.01	0.00	0.12
30 Min East	-	0.12	0.00	0.00	0.00	0.40	2.43	1.71	0.09	0.01	0.00	0.00
30 Min West	-	0.11	0.00	0.00	0.00	0.40	2.36	1.61	0.09	0.01	0.00	0.00
Regulation East	-	51.41	47.74	26.33	29.62	35.47	29.52	41.14	64.70	75.41	70.52	68.30
Regulation West	-	51.41	47.74	26.33	29.62	35.47	29.52	41.13	64.70	75.41	70.52	68.30

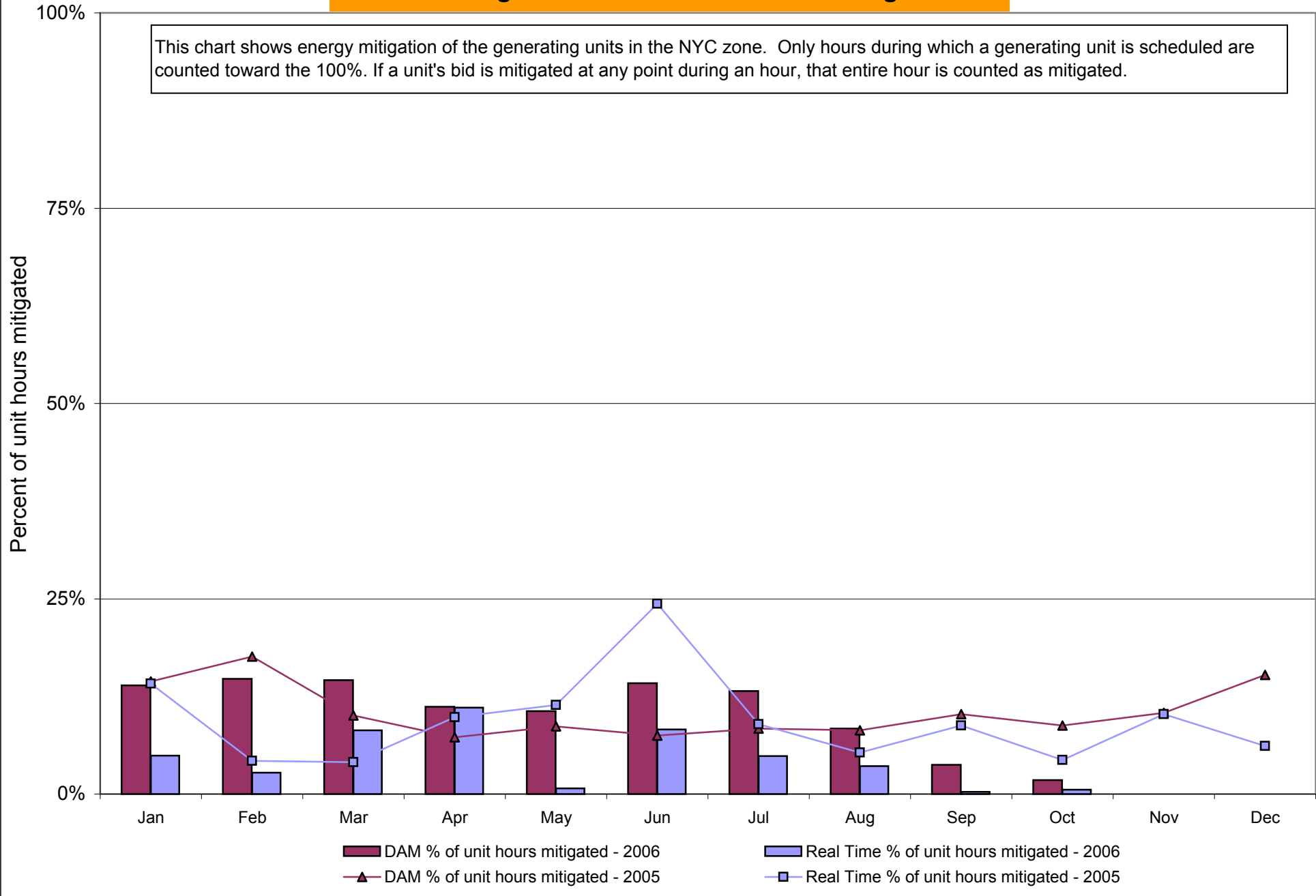
* Referred to as RTC beginning February 2005. Prior to February 2005 known as BME or Hour Ahead Market (HAM).

** The Real Time Ancillary Market began in February 2005.

NYISO In City Energy Mitigation (NYC Zone) 2005-2006

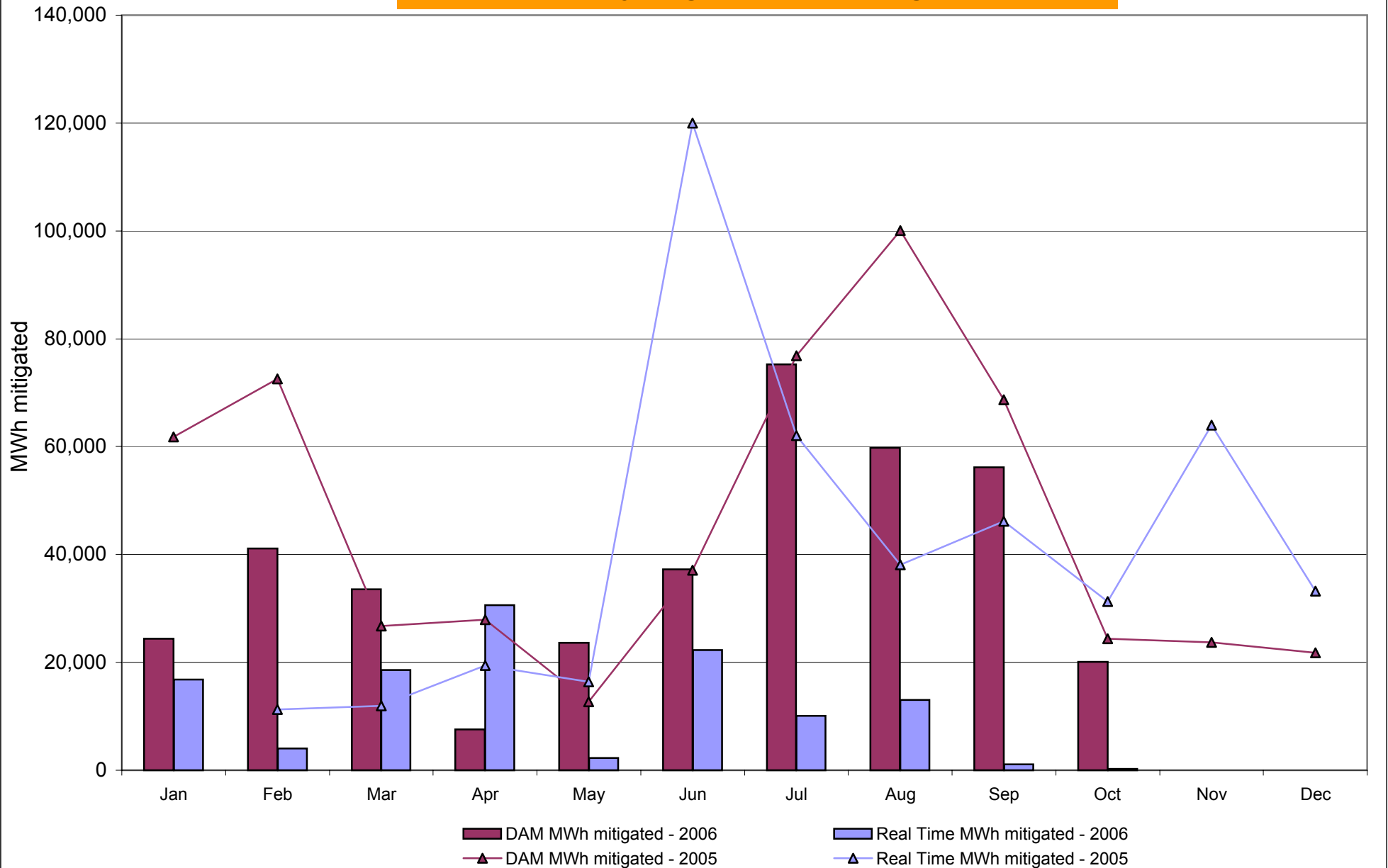
Percentage of committed unit-hours mitigated

This chart shows energy mitigation of the generating units in the NYC zone. Only hours during which a generating unit is scheduled are counted toward the 100%. If a unit's bid is mitigated at any point during an hour, that entire hour is counted as mitigated.



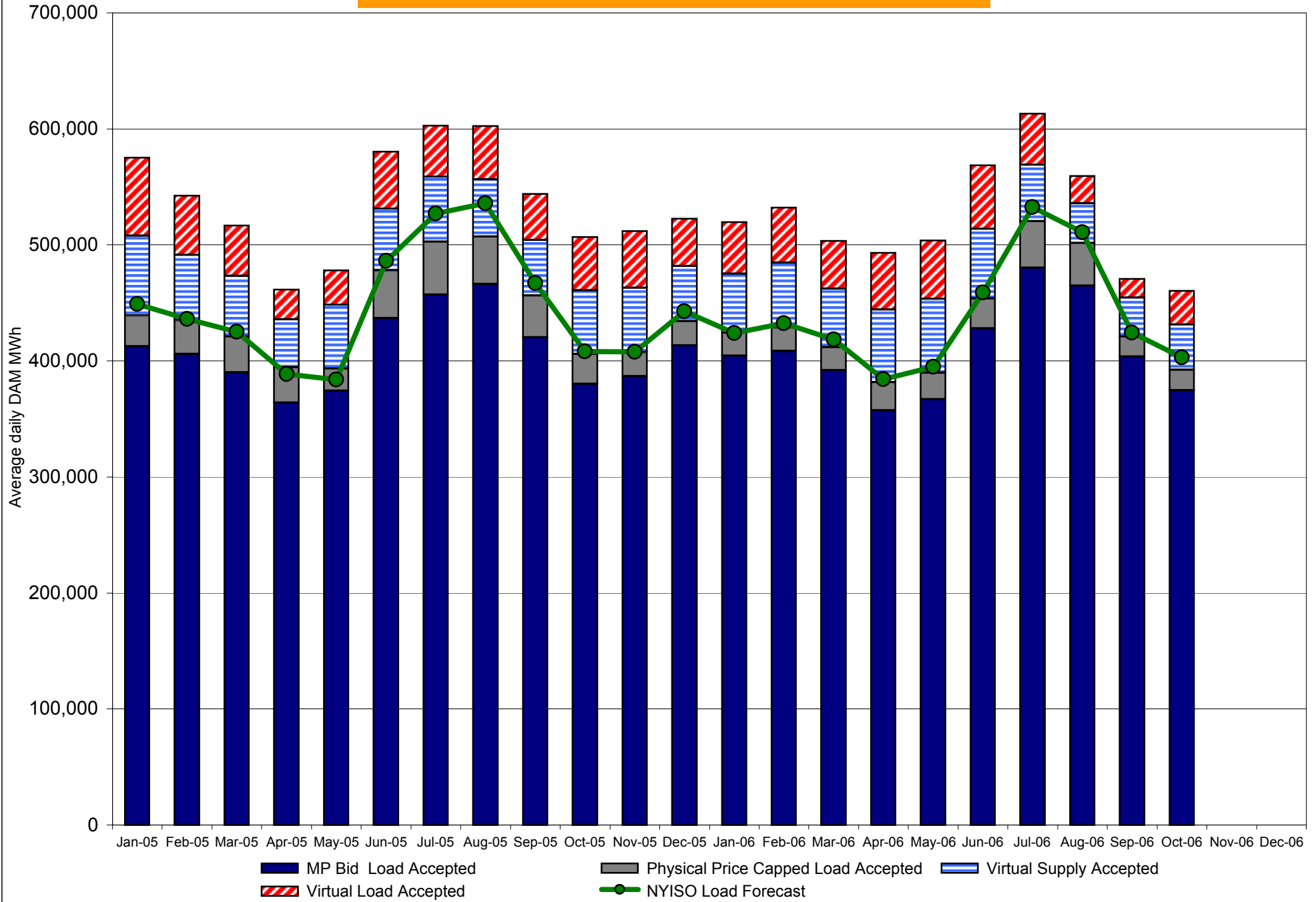
NYISO In City Energy Mitigation (NYC Zone) 2005-2006

Monthly megawatt hours mitigated

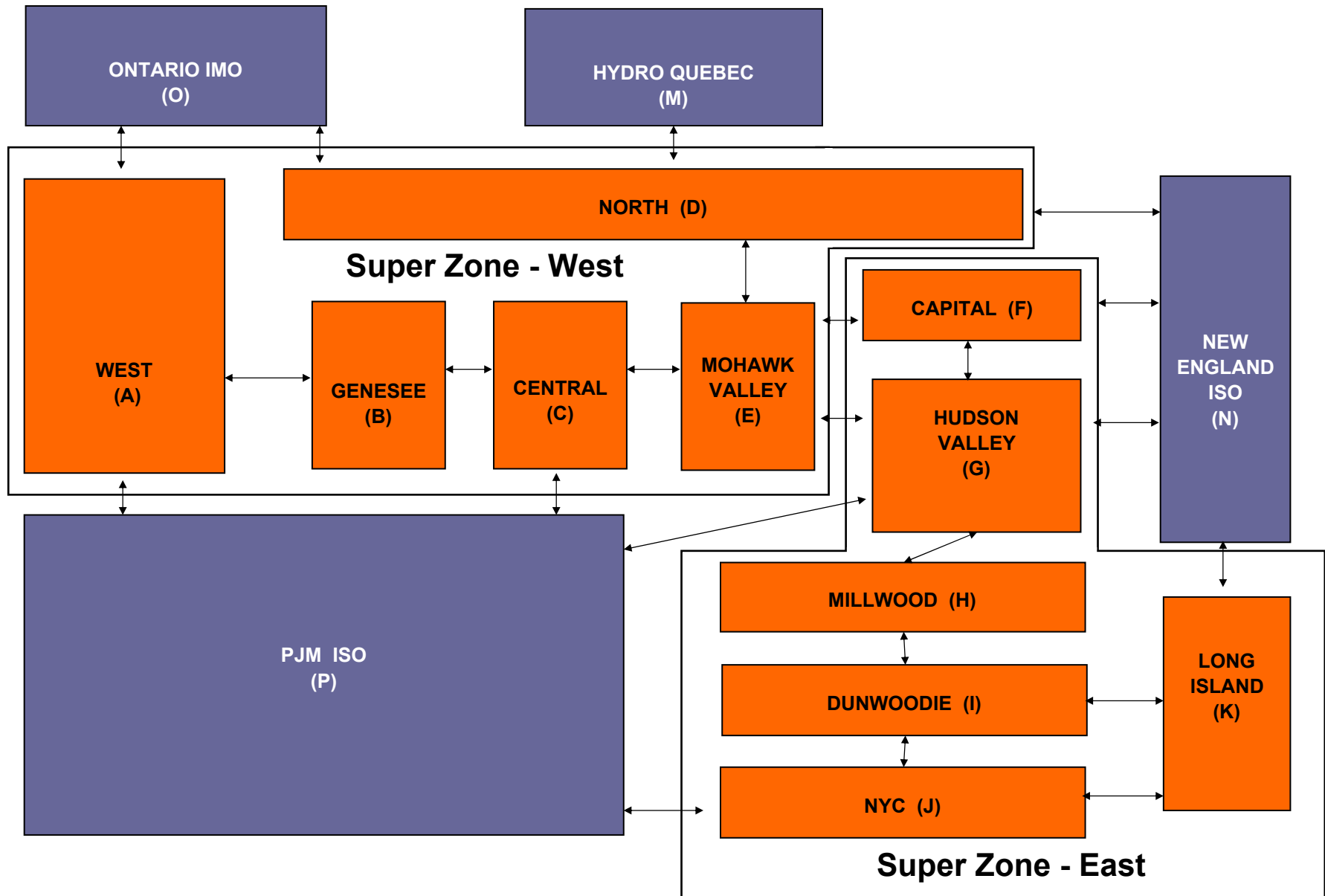


RT mitigation data available with SMD2 deployment in February 2005.

NYISO Average Daily DAM Load Bid Summary



NYISO LBMP ZONES



Billing Codes for Chart 4-C

Chart 4-C Category Name	Billing Code	Billing Category Name
Bid Production Cost Guarantee Balancing	81203	Balancing NYISO Bid Production Cost Guarantee - Internal Units
Bid Production Cost Guarantee Balancing	81204	Balancing NYISO Bid Production Cost Guarantee - External Units
Bid Production Cost Guarantee Balancing	81205	Balancing NYISO Bid Production Cost Guarantee Expenditure due to Curtailed Imports
Bid Production Cost Guarantee Balancing	81208	Balancing NYISO Bid Production Cost Guarantee - Internal Units
Bid Production Cost Guarantee Balancing	81209	Balancing NYISO Bid Production Cost Guarantee - External Units
Bid Production Cost Guarantee Balancing	81213	Balancing NYISO Bid Production Cost Guarantee Expenditure due to Curtailed Imports
Bid Production Cost Guarantee DAM	81201	DAM NYISO Bid Production Cost Guarantee - Internal Units
Bid Production Cost Guarantee DAM	81202	DAM NYISO Bid Production Cost Guarantee - External Units
Bid Production Cost Guarantee DAM	81206	DAM NYISO Bid Production Cost Guarantee - Internal Units
Bid Production Cost Guarantee DAM	81207	DAM NYISO Bid Production Cost Guarantee - External Units
Bid Production Cost Guarantee DAM Virtual	81501	DAM Virtual Bid Production Cost Guarantee
DAM Contract Balancing	81315	DAM Contract Balancing
DAM Contract Balancing	81317	DAM Contract Balancing
Local Reliability Balancing	81002	Balancing Local Reliability Bid Production Cost Guarantee
Local Reliability DAM	81001	DAM Local Reliability Bid Production Cost Guarantee
NYISO Cost of Operations	80901	NYISO Cost Of Operations
NYISO Cost of Operations	80902	NYISO Cost Of Operations
NYISO Cost of Operations	83501	NYISO Cost Of Operations
NYISO Cost of Operations	83502	NYISO Cost Of Operations
Residuals Balancing	81302	Balancing Market Energy Residual
Residuals Balancing	81304	Balancing Market Loss Residual
Residuals Balancing	81305	Balancing Market Congestion Balancing
Residuals Balancing	81306	Emergency Energy Purchases
Residuals Balancing	81307	Emergency Energy Sales
Residuals Balancing	81309	Balancing Market Energy Residual
Residuals Balancing	81311	Balancing Market Loss Residual
Residuals Balancing	81312	Balancing Market Congestion Balancing
Residuals Balancing	81313	Emergency Energy Purchases
Residuals Balancing	81314	Emergency Energy Sales
Residuals DAM	81301	Day Ahead Market Energy Residual
Residuals DAM	81303	Day Ahead Market Loss Residual
Residuals DAM	81308	Day Ahead Market Energy Residual
Residuals DAM	81310	Day Ahead Market Loss Residual