

---

# **NYISO President's Report**

*Management Committee Meeting  
May 31, 2006*

*Agenda #3*

# Report Items

---

- VP Market Structures
- Update on Price Error Elimination Progress
- TCC Automation Project Update
- Comprehensive Reliability Plan Update
- 2006 Summer Readiness Review
- Market Performance Highlights – For Information Only

# Price Error Elimination Status

- *Reservation and correction rate remains low*
  - One new price error source identified in April
  - Issue was related to scheduling of Gilboa and resulted in a limited number of corrections
  - Error was due to inconsistency between software change and operating procedures
  - Issue was identified through PEET process and repaired
- *Cycle time to provide corrections improves*
- *Process implemented for timely release of reservations, when no correction is necessary*

# Recent Price Correction Statistics

Jan 2006	Reservations	Corrections	Released	Tot. Hours
Hours	41	20	21	744
% Hours w/o	94.5%	97.3%	-	
% Hours	5.5%	2.7%	2.8%	

Feb 2006	Reservations	Corrections	Released	Tot. Hours
Hours	43	22	21	672
% Hours w/o	93.6%	96.7%	-	
% Hours	6.4%	3.3%	3.1%	

Mar 2006	Reservations	Corrections	Released	Tot. Hours
Hours	26	11	15	744
% Hours w/o	96.5%	98.5%	-	
% Hours	3.5%	1.5%	2.0%	

# Recent Price Correction Statistics (Cont.)

First Quarter	Reservations	Corrections	Released	Tot. Hours
Hours	110	53	57	2160
% Hours w/o	94.9%	97.5%	-	
% Hours	5.1%	2.5%	2.6%	

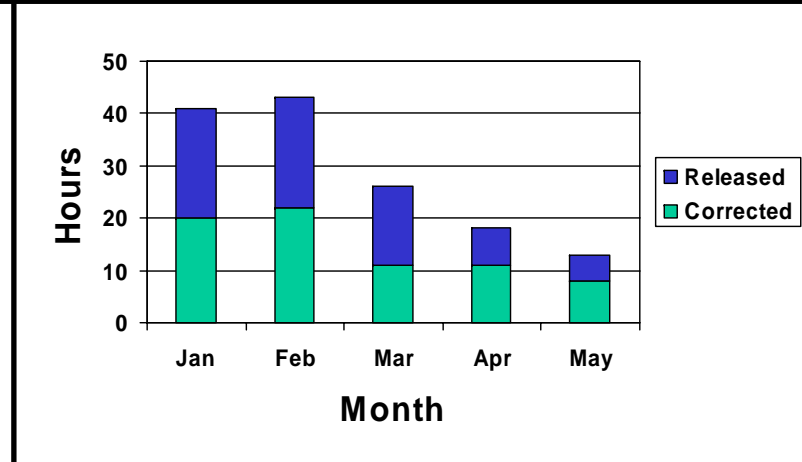
Apr 2006	Reservations	Corrections	Released	Tot. Hours
Hours	18	11	7	720
% Hours w/o	97.5%	98.5%	-	
% Hours	2.5%	1.5%	1.0%	

May 2006*	Reservations	Corrections	Released	Tot. Hours
Hours	13	8	5	360
% Hours w/o	96.4%	97.8%	-	
% Hours	3.6%	2.2%	1.4%	

\* - Data through 15 May 2006

# Recent Price Correction Statistics (Cont.)

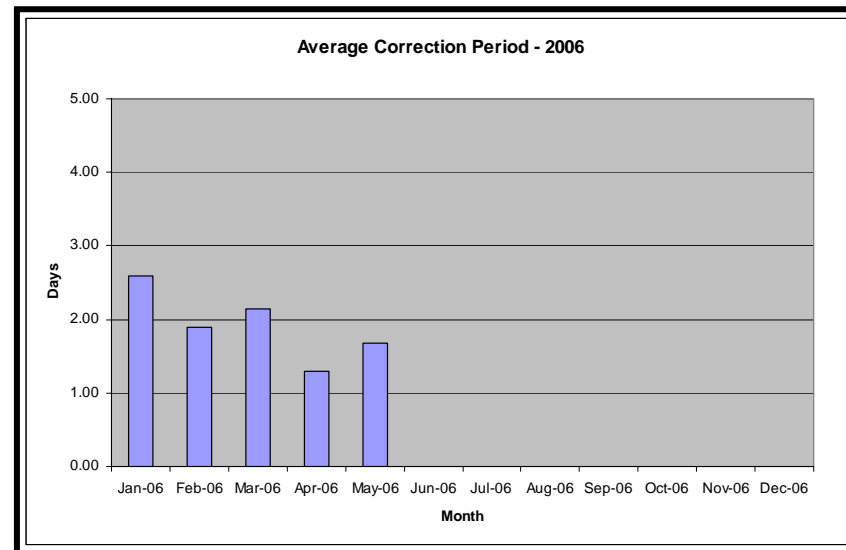
2006 YTD	Reservations	Corrections	Released	Tot. Hours
January	41	20	21	744
February	43	22	21	672
March	26	11	15	744
April	18	11	7	720
May*	16	8	5	360
<b>2006 Total Hours Reserved</b>				



\* - Data through 15 May 2006

# Recent Price Correction Statistics (Cont.)

	Days Corrected	Avg	Max	Min	Std Dev
Jan-06	12	2.58	5	0	1.88
Feb-06	10	1.90	4	0	1.52
Mar-06	7	2.14	5	0	1.77
Apr-06	10	1.30	3	0	0.82
May-06*	3	1.67	3	0	1.53



\* - Data through 15 May 2006

# TCC Automation Project Update

- TCC Phase 1 automation of the Market Participant award notification process is scheduled for deployment at the end of June
- The first production use of the new system is planned for July with the August reconfiguration auction
- A Market Trial exercise is scheduled to take place in June on the July reconfiguration auction results
- We encourage all TCC Market Participants to participate in this exercise
- Online training materials and additional information are available on the NYISO website
- Market Participants may contact their Customer Relations representatives for more information



# 2006 Summer Readiness Review

*Management Committee Meeting*

*May 31, 2006*

# NYCA Load and Capacity Outlook For Summer 2006 (as of May, 2006)

<u>New York Control Area</u>	<u>Summer</u>
Forecast Demand	33,295 MW
Reserve Requirement	<u>5,993 MW</u>
Min.Total Requirement	39,288 MW
NYCA Available Supply <sup>1</sup>	<u>38,169 MW</u>
Need for New Units, External ICAP, or SCRs	1,119 MW
<u>Potential New Supply</u>	
New Units (see last page for listing)	1,473 MW
Special Case Resources	1,090 MW
External ICAP <sup>2</sup>	2,755 MW

1. Based on 2005 summer DMNC tests less 305 MW of firm sales.
2. NYCA allows up to 2,755 MW of imports.

# New York City Load and Capacity Outlook

For Summer 2006 (as of May, 2006)

## New York City

Forecast Demand

Summer  
11,630 MW

In-City Requirements (80%)

9,304 MW

NYCA Available Supply

9,054 MW

Need for New Units or SCRs

250 MW

## Potential New Supply

New Units (see last page for listing)

1,000 MW

Special Case Resources

350 MW

# Long Island Load and Capacity Outlook

For Summer 2006 (as of May, 2006)

## Long Island

Forecast Demand

On Island Requirements (99%)

NYCA Available Supply

## Summer

5,348 MW

5,295 MW

5,287 MW

## Potential New Supply

New Units (see last page for listing)

Special Case Resources

330 MW

139 MW

# NYCA Potential New Supply

Installed by July 1, 2006 (as of May, 2006)

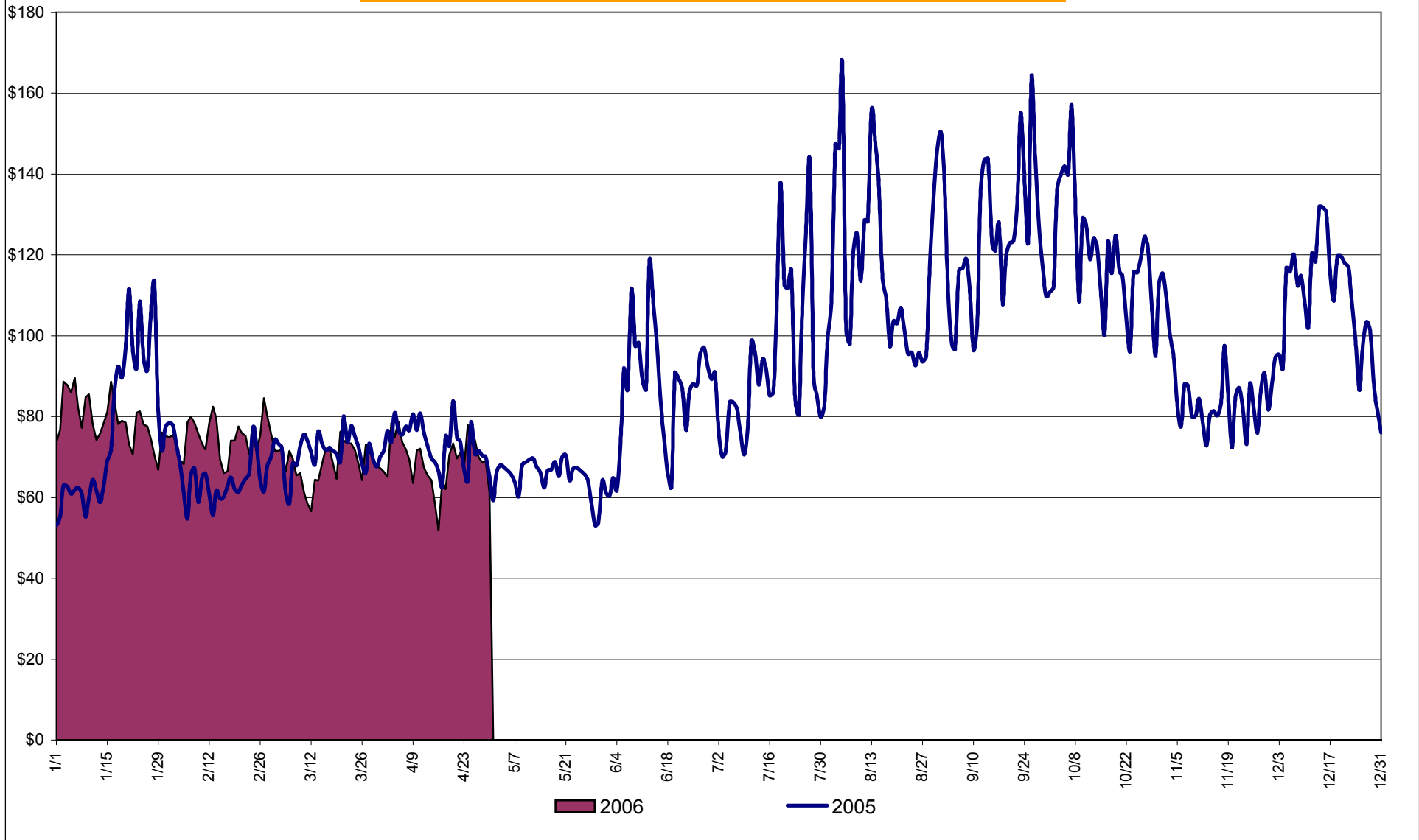
2

<u>Generator</u>	<u>Location</u>	<u>Rating</u>
Maple Ridge Wind (Flat Rock)	Zone E	198 MW
Indeck Ilion Retirement	Zone E	-55 MW
SCS Astoria	NYC	500 MW
NYPA Poletti Expansion	NYC	500 MW
<u>Cross Sound Controllable Line</u>	<u>LI</u>	<u>330 MW</u>
<b>TOTAL</b>		<b>1,473 MW</b>

# Market Performance Highlights for April 2006

- **NYISO LBMP has decreased slightly and Average Cost has increased slightly this month relative to March 2006.**
  - *LBMP for April is \$66.24/MWh, down from \$66.52/MWh in March.*
  - *Average cost is \$69.24/MWh, up slightly from \$69.02/MWh in March.*
  - *Day Ahead and Real Time LBMPs have decreased from March.*
- **Fuel prices have increased this month.**
  - *Kerosene is \$15.62/mmBTU, up from \$14.15/mmBTU in March*
  - *No. 2 Fuel Oil is \$14.10/mmBTU, up from \$12.66/mmBTU in March*
  - *Natural Gas is \$7.68/mmBTU, up slightly from \$7.64/mmBTU in March*
  - *No. 6 Fuel Oil is \$8.40/mmBTU, up from \$7.99/mmBTU in March*
- **Uplift has increased this month relative to March 2006.**
  - *Uplift (not including NYISO cost of operations) is \$0.63/MWh, up from \$0.09/MWh in March. This is primarily due to an increase in Balancing Market Residuals.*
- **Regulation prices in all markets have decreased relative to March.**

**Daily NYISO Average Cost/MWh (Energy & Ancillary Services)\***  
 2005 Annual Average \$93.89/MWh  
 April 2005 YTD Average \$72.86/MWh  
 April 2006 YTD Average \$73.24/MWh



\* Excludes ICAP payments.

**NYISO Average Cost/MWh (Energy and Ancillary Services) \***  
**from the LBMP Customer point of view**

<b>2006</b>	<u>January</u>	<u>February</u>	<u>March</u>	<u>April</u>	<u>May</u>	<u>June</u>	<u>July</u>	<u>August</u>	<u>September</u>	<u>October</u>	<u>November</u>	<u>December</u>
LBMP	77.14	71.85	66.52	66.24								
NTAC	0.47	0.90	0.43	0.54								
Reserve	0.35	0.30	0.29	0.35								
Regulation	0.56	0.68	0.69	0.48								
NYISO Cost of Operations	0.64	0.64	0.64	0.64								
Uplift	(0.07)	0.37	0.09	0.63								
Voltage Support and Black Start	<u>0.36</u>	<u>0.36</u>	<u>0.36</u>	<u>0.36</u>								
<b>Avg Monthly Cost</b>	79.46	75.10	69.02	69.24								
Avg YTD Cost	79.46	77.39	74.49	73.24								

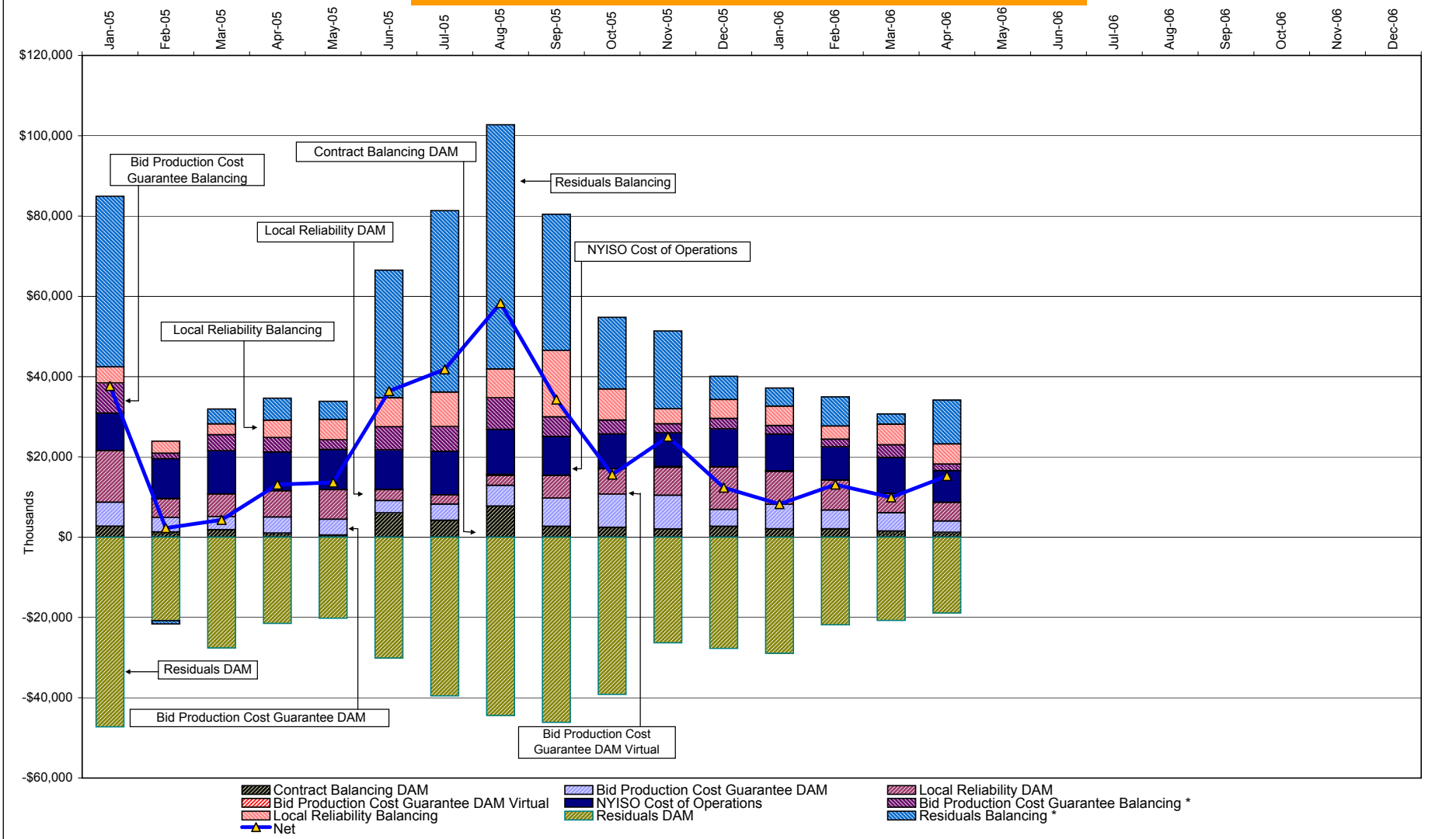
<b>2005</b>	<u>January</u>	<u>February</u>	<u>March</u>	<u>April</u>	<u>May</u>	<u>June</u>	<u>July</u>	<u>August</u>	<u>September</u>	<u>October</u>	<u>November</u>	<u>December</u>
LBMP	75.70	64.03	69.95	71.28	63.13	84.83	92.42	115.19	122.40	118.56	82.00	106.11
NTAC	0.42	0.36	0.23	0.49	0.40	0.58	0.46	0.25	0.10	0.03	0.39	0.64
Reserve	0.24	0.08	0.17	0.21	0.20	(0.01)	0.11	0.02	0.31	0.54	0.34	0.38
Regulation	0.32	0.40	0.34	0.22	0.25	0.20	0.15	0.06	0.41	0.64	0.70	0.53
NYISO Cost of Operations	0.63	0.79	0.79	0.79	0.79	0.63	0.63	0.63	0.63	0.63	0.63	0.63
Uplift	1.99	(0.59)	(0.47)	0.29	0.30	1.85	1.95	2.76	1.68	0.52	1.26	0.17
Voltage Support and Black Start	<u>0.39</u>	<u>0.39</u>	<u>0.39</u>	<u>0.39</u>	<u>0.39</u>	<u>0.39</u>	<u>0.39</u>	<u>0.39</u>	<u>0.39</u>	<u>0.39</u>	<u>0.39</u>	<u>0.39</u>
<b>Avg Monthly Cost</b>	79.70	65.45	71.38	73.67	65.46	88.48	96.09	119.29	125.93	121.32	85.72	108.85
Avg YTD Cost	79.70	73.25	72.61	72.86	71.56	74.91	78.90	85.52	90.31	93.10	92.53	93.89

\* Excludes ICAP payments.

These numbers reflect the rebilling of prior periods.



## NYISO Dollar Flows - Uplift - OATT Schedule 1 components



DAM Contract Balancing amounts are for payments made to generating units to make them whole for being dispatched below their Day-Ahead schedule, as a result of out-of-merit dispatches.  
 DAM Bid Production Cost Guarantees for Virtual Transactions are included in the chart and are shown from the inception of Virtual Transactions. These values are small and cannot be identified on the chart.  
 DAM residuals are revenue charged or returned to customers due to the under or over collection of funds. On this chart, negative values represent funds returned to Transmission Customers (through Transmission Owners' Transmission Service Charges).

\* Effective November 2005 codes 81305 and 81312 have been re-categorized from BPCG Balancing to Residuals Balancing so as to better reflect their uplift type (see 4-AF).  
 All months have been adjusted accordingly.

## NYISO Markets Transactions

<u>2006</u>	<u>January</u>	<u>February</u>	<u>March</u>	<u>April</u>	<u>May</u>	<u>June</u>	<u>July</u>	<u>August</u>	<u>September</u>	<u>October</u>	<u>November</u>	<u>December</u>
<b>Day Ahead Market MWh</b>	13,877,416	12,532,754	13,392,627	11,860,369								
DAM LSE Internal LBMP Energy Sales	46%	47%	48%	50%								
DAM External TC LBMP Energy Sales	4%	3%	2%	2%								
DAM Bilateral - Internal Bilaterals	47%	47%	45%	45%								
DAM Bilateral - Import/Non-LBMP Market Bilaterals	2%	2%	2%	2%								
DAM Bilateral - Export/Non-LBMP Market Bilaterals	1%	1%	2%	1%								
DAM Bilateral - Wheel Through Bilaterals	0%	0%	0%	0%								
<b>Balancing Energy Market MWh</b>	300,904	322,333	558,199	396,791								
Balancing Energy LSE Internal LBMP Energy Sales	3%	22%	31%	26%								
Balancing Energy External TC LBMP Energy Sales	86%	74%	66%	68%								
Balancing Energy Bilateral - Internal Bilaterals	5%	2%	2%	2%								
Balancing Energy Bilateral - Import/Non-LBMP Market Bilaterals	2%	1%	0%	0%								
Balancing Energy Bilateral - Export/Non-LBMP Market Bilaterals	1%	1%	1%	1%								
Balancing Energy Bilateral - Wheel Through Bilaterals	4%	1%	0%	3%								
<b>Transactions Summary</b>												
LBMP	51%	50%	52%	53%								
Internal Bilaterals	46%	46%	43%	43%								
Import Bilaterals	2%	2%	2%	2%								
Export Bilaterals	1%	1%	2%	1%								
Wheels Through	0%	0%	0%	0%								
<b>Market Share of Total Load</b>												
Day Ahead Market	97.9%	97.5%	96.0%	96.8%								
Balancing Energy †	2.1%	2.5%	4.0%	3.2%								
Total MWh	14,178,320	12,855,086	13,950,825	12,257,160								
Average Daily Energy Sendout/Month GWh	439	444	428	395								
<b>2005</b>	<b>January</b>	<b>February</b>	<b>March</b>	<b>April</b>	<b>May</b>	<b>June</b>	<b>July</b>	<b>August</b>	<b>September</b>	<b>October</b>	<b>November</b>	<b>December</b>
<b>Day Ahead Market MWh</b>	14,281,481	12,510,148	13,410,579	12,215,628	12,773,478	14,981,363	16,344,465	16,587,663	14,706,243	13,309,658	12,893,992	14,418,648
DAM LSE Internal LBMP Energy Sales	48%	49%	52%	52%	45%	50%	53%	52%	49%	46%	45%	46%
DAM External TC LBMP Energy Sales	3%	1%	1%	1%	3%	3%	3%	4%	6%	4%	4%	5%
DAM Bilateral - Internal Bilaterals	47%	48%	45%	44%	50%	44%	42%	42%	43%	47%	48%	46%
DAM Bilateral - Import/Non-LBMP Market Bilaterals	1%	1%	1%	0%	0%	1%	1%	1%	2%	2%	2%	2%
DAM Bilateral - Export/Non-LBMP Market Bilaterals	1%	1%	1%	1%	2%	1%	1%	1%	1%	1%	1%	1%
DAM Bilateral - Wheel Through Bilaterals	1%	0%	1%	0%	0%	1%	0%	0%	0%	0%	0%	0%
<b>Balancing Energy Market MWh</b>	414,096	123,162	329,431	58,175	-101,200	582,604	796,586	1,107,346	544,610	384,383	365,677	515,733
Balancing Energy LSE Internal LBMP Energy Sales	77%	-39%	22%	-336%	-307%	46%	73%	73%	33%	4%	-15%	41%
Balancing Energy External TC LBMP Energy Sales	43%	161%	77%	463%	208%	45%	23%	21%	51%	93%	100%	49%
Balancing Energy Bilateral - Internal Bilaterals	-13%	-9%	7%	-27%	5%	5%	6%	6%	13%	4%	13%	11%
Balancing Energy Bilateral - Import/Non-LBMP Market Bilaterals	0%	0%	0%	0%	0%	0%	0%	0%	0%	0%	0%	0%
Balancing Energy Bilateral - Export/Non-LBMP Market Bilaterals	1%	0%	0%	2%	2%	1%	1%	0%	0%	1%	1%	1%
Balancing Energy Bilateral - Wheel Through Bilaterals	-8%	-13%	-5%	-2%	-8%	3%	-2%	1%	3%	-1%	2%	-1%
<b>Transactions Summary</b>												
LBMP	53%	51%	54%	54%	47%	54%	58%	58%	56%	52%	50%	52%
Internal Bilaterals	45%	47%	44%	44%	50%	43%	40%	39%	42%	45%	47%	45%
Import Bilaterals	1%	1%	1%	0%	0%	1%	1%	1%	1%	2%	2%	2%
Export Bilaterals	1%	1%	1%	1%	2%	1%	1%	1%	1%	1%	1%	1%
Wheels Through	0%	0%	0%	0%	0%	1%	0%	0%	0%	0%	0%	0%
<b>Market Share of Total Load</b>												
Day Ahead Market	97.2%	99.0%	97.6%	99.5%	100.8%	96.3%	95.4%	93.7%	96.4%	97.2%	97.2%	96.5%
Balancing Energy †	2.8%	1.0%	2.4%	0.5%	-0.8% *	3.7%	4.6%	6.3%	3.6%	2.8%	2.8%	3.5%
Total MWh	14,695,577	12,633,310	13,740,011	12,273,803	12,672,278	15,563,968	17,141,051	17,695,009	15,250,854	13,694,041	13,259,669	14,934,381
Average Daily Energy Sendout/Month GWh	462	447	433	399	395	501	536	549	478	418	419	454

† Balancing Energy: Load(MW) purchased at Real Time LBMP.

\* The signs for the detail section intuitively reflect the direction of power flow eliminating the use of double negatives when Balancing Energy is negative.

Notes: Percent totals may not equal 100% due to rounding.  
Virtual Transactions are not reflected in this chart.

### NYISO Markets 2006 Energy Statistics

	<u>January</u>	<u>February</u>	<u>March</u>	<u>April</u>	<u>May</u>	<u>June</u>	<u>July</u>	<u>August</u>	<u>September</u>	<u>October</u>	<u>November</u>	<u>December</u>
<b><u>DAY AHEAD LBMP</u></b>												
Price *	\$73.28	\$68.90	\$64.31	\$63.21								
Standard Deviation	\$15.03	\$12.95	\$11.95	\$13.28								
Load Weighted Price **	\$75.09	\$70.34	\$65.74	\$64.93								
<b><u>RTC *** LBMP</u></b>												
Price *	\$70.25	\$63.41	\$63.04	\$62.39								
Standard Deviation	\$26.63	\$15.86	\$20.50	\$18.82								
Load Weighted Price **	\$71.94	\$64.44	\$64.43	\$63.93								
<b><u>REAL TIME LBMP</u></b>												
Price *	\$70.91	\$63.96	\$63.66	\$62.35								
Standard Deviation	\$31.34	\$20.06	\$23.01	\$20.98								
Load Weighted Price **	\$73.18	\$65.38	\$65.38	\$64.13								
Average Daily Energy Sendout/Month GWh	439	444	428	395								

### NYISO Markets 2005 Energy Statistics

	<u>January</u>	<u>February</u>	<u>March</u>	<u>April</u>	<u>May</u>	<u>June</u>	<u>July</u>	<u>August</u>	<u>September</u>	<u>October</u>	<u>November</u>	<u>December</u>
<b><u>DAY AHEAD LBMP</u></b>												
Price *	\$69.55	\$61.04	\$67.17	\$68.14	\$59.59	\$75.49	\$83.75	\$102.33	\$115.47	\$110.99	\$78.56	\$101.24
Standard Deviation	\$23.42	\$12.00	\$12.49	\$14.20	\$13.39	\$22.85	\$24.32	\$31.65	\$32.31	\$28.39	\$21.07	\$26.32
Load Weighted Price **	\$72.26	\$62.42	\$68.61	\$69.92	\$61.44	\$79.64	\$88.09	\$107.34	\$120.22	\$115.20	\$81.05	\$104.27
<b><u>RTC *** LBMP</u></b>												
Price *	\$74.47	\$55.93	\$70.40	\$69.92	\$61.59	\$85.42	\$94.96	\$129.60	\$116.00	\$108.53	\$74.02	\$94.86
Standard Deviation	\$44.64	\$16.80	\$26.13	\$23.51	\$59.20	\$62.91	\$68.35	\$116.09	\$44.35	\$42.95	\$33.43	\$40.18
Load Weighted Price **	\$77.48	\$57.10	\$72.12	\$71.72	\$64.16	\$90.25	\$100.76	\$138.00	\$120.72	\$112.25	\$76.57	\$97.73
<b><u>REAL TIME LBMP</u></b>												
Price *	\$70.25	\$57.57	\$68.04	\$64.95	\$57.20	\$77.75	\$90.48	\$122.21	\$114.94	\$110.90	\$74.62	\$94.16
Standard Deviation	\$31.79	\$20.48	\$32.50	\$26.06	\$42.34	\$55.70	\$72.95	\$103.00	\$42.92	\$55.35	\$36.61	\$40.67
Load Weighted Price **	\$73.26	\$58.86	\$69.88	\$66.77	\$59.04	\$83.96	\$96.82	\$130.69	\$120.36	\$115.69	\$77.51	\$97.64
Average Daily Energy Sendout/Month GWh	462	447	433	399	395	501	536	549	478	418	419	454

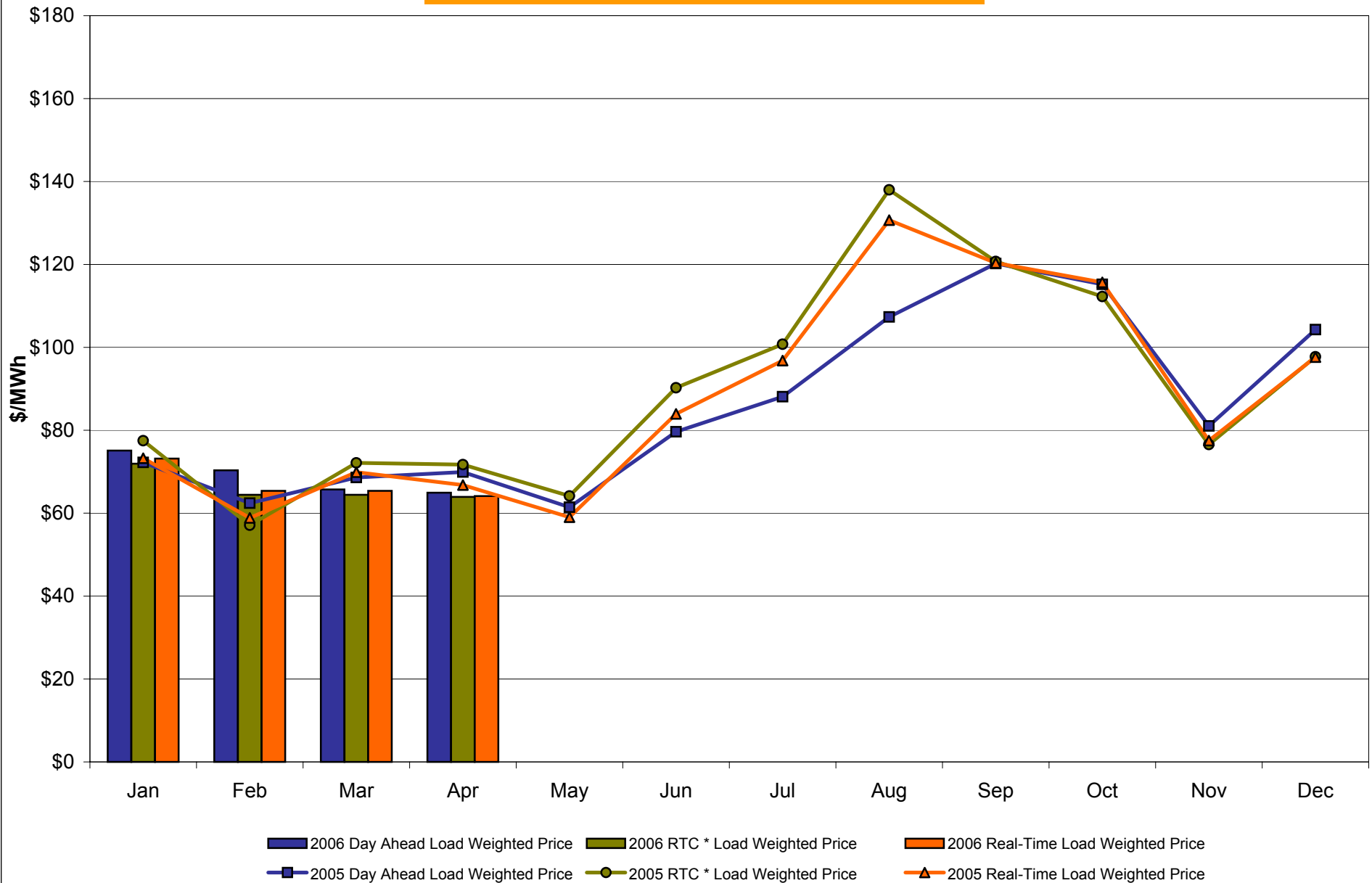
\* Average zonal load weighted prices.

\*\* Average zonal load weighted prices, load weighted in each hour.

\*\*\* Referred to as RTC beginning February 2005.

Prior to February 2005 known as BME or Hour Ahead Market (HAM).

## NYISO Monthly Average Internal LBMPs 2005 - 2006



\* Referred to as RTC beginning February 2005.  
Prior to February 2005 known as BME or Hour Ahead Market (HAM).

**April 2006 Zonal LBMP Statistics for NYISO (\$/MWh)**

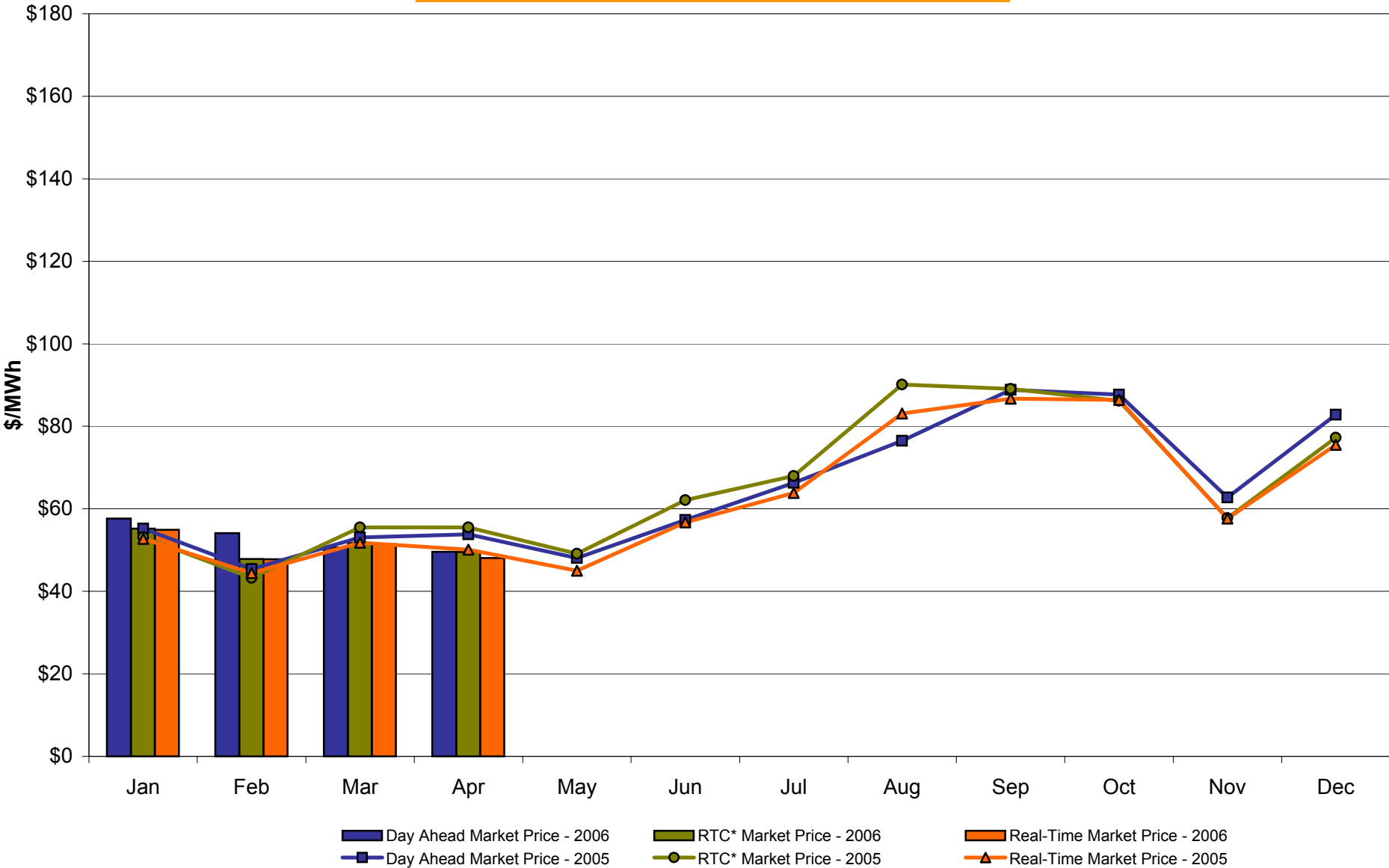
	<u>WEST Zone A</u>	<u>GENESEE Zone B</u>	<u>NORTH Zone D</u>	<u>CENTRAL Zone C</u>	<u>MOHAWK VALLEY Zone E</u>	<u>CAPITAL Zone F</u>	<u>HUDSON VALLEY Zone G</u>	<u>MILLWOOD Zone H</u>	<u>DUNWOODIE Zone I</u>	<u>NEW YORK CITY Zone J</u>	<u>LONG ISLAND Zone K</u>
<b><u>DAY AHEAD LBMP</u></b>											
Unweighted Price *	49.59	52.53	53.09	54.06	55.66	59.74	61.28	62.53	62.82	66.24	87.30
Standard Deviation	10.58	11.36	10.85	11.49	11.65	12.54	13.50	14.72	14.72	16.62	14.66
<b><u>RTC** LBMP</u></b>											
Unweighted Price *	49.51	51.42	52.00	53.16	54.75	59.37	60.03	60.29	60.39	65.79	85.98
Standard Deviation	17.40	18.19	18.40	18.60	19.21	20.15	19.93	20.08	20.10	22.56	25.64
<b><u>REAL TIME LBMP</u></b>											
Unweighted Price *	48.10	49.90	50.15	51.57	53.04	58.60	59.01	59.28	59.36	67.03	89.14
Standard Deviation	18.21	19.10	19.25	19.52	20.17	24.83	23.08	23.32	23.32	27.90	31.41
	<u>ONTARIO IESO Zone O</u>	<u>HYDRO QUEBEC Zone M</u>	<u>PJM Zone P</u>	<u>NEW ENGLAND Zone N</u>	<u>CROSS SOUND CABLE Controllable Line</u>						
<b><u>DAY AHEAD LBMP</u></b>											
Unweighted Price *	48.85	56.54	51.33	60.07	86.92						
Standard Deviation	10.55	9.23	11.74	12.72	14.49						
<b><u>RTC** LBMP</u></b>											
Unweighted Price *	47.06	56.72	49.17	56.90	82.94						
Standard Deviation	14.00	96.51	13.59	13.69	18.41						
<b><u>REAL TIME LBMP</u></b>											
Unweighted Price *	46.90	51.66	49.18	58.40	87.61						
Standard Deviation	18.04	19.10	17.47	22.63	29.66						

\* Straight zonal LBMP averages

\*\* Referred to as RTC beginning February 2005

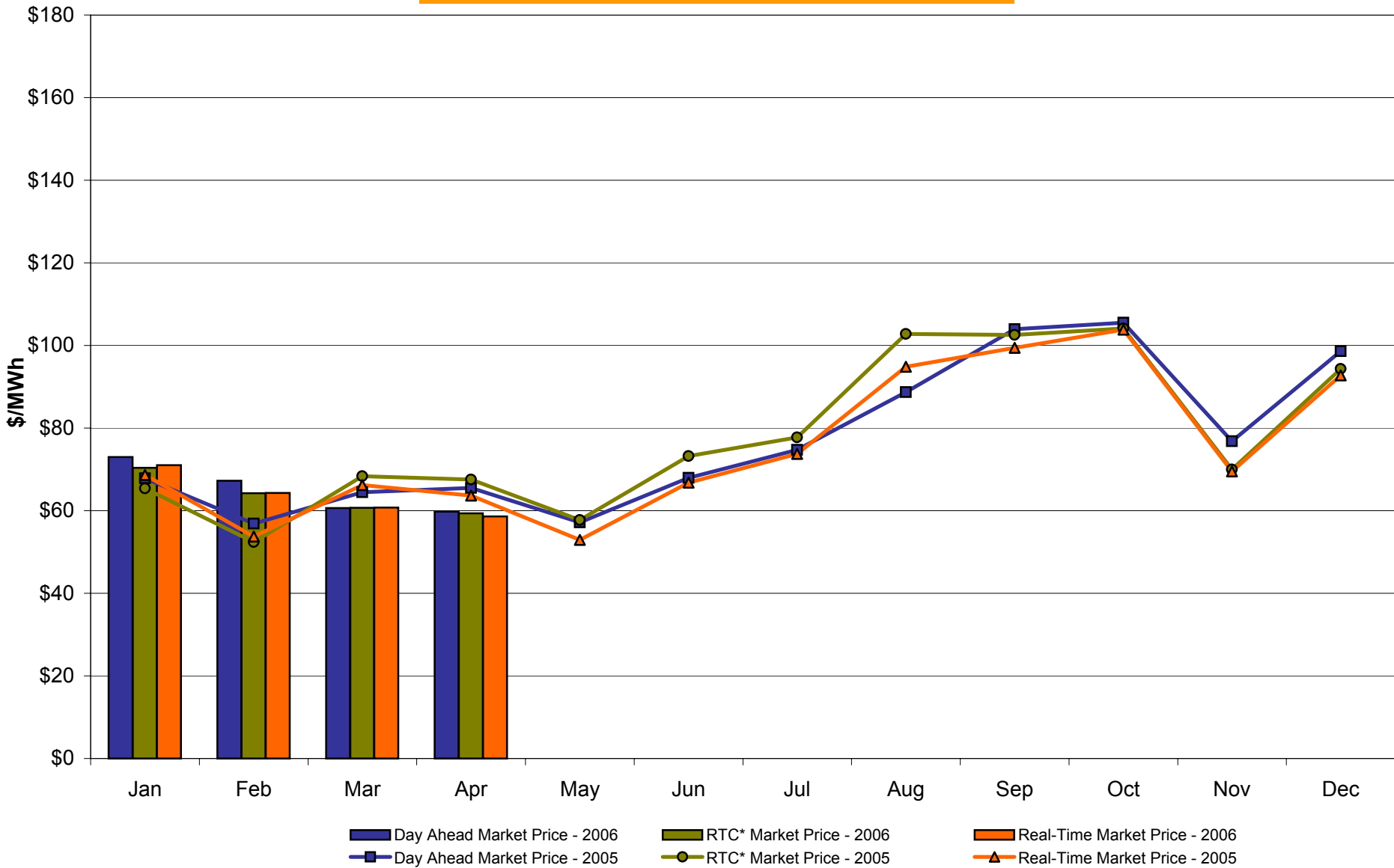
Prior to February 2005 known as BME or Hour Ahead Market (HAM)

## West Zone A Monthly Average LBMP Prices 2005 - 2006



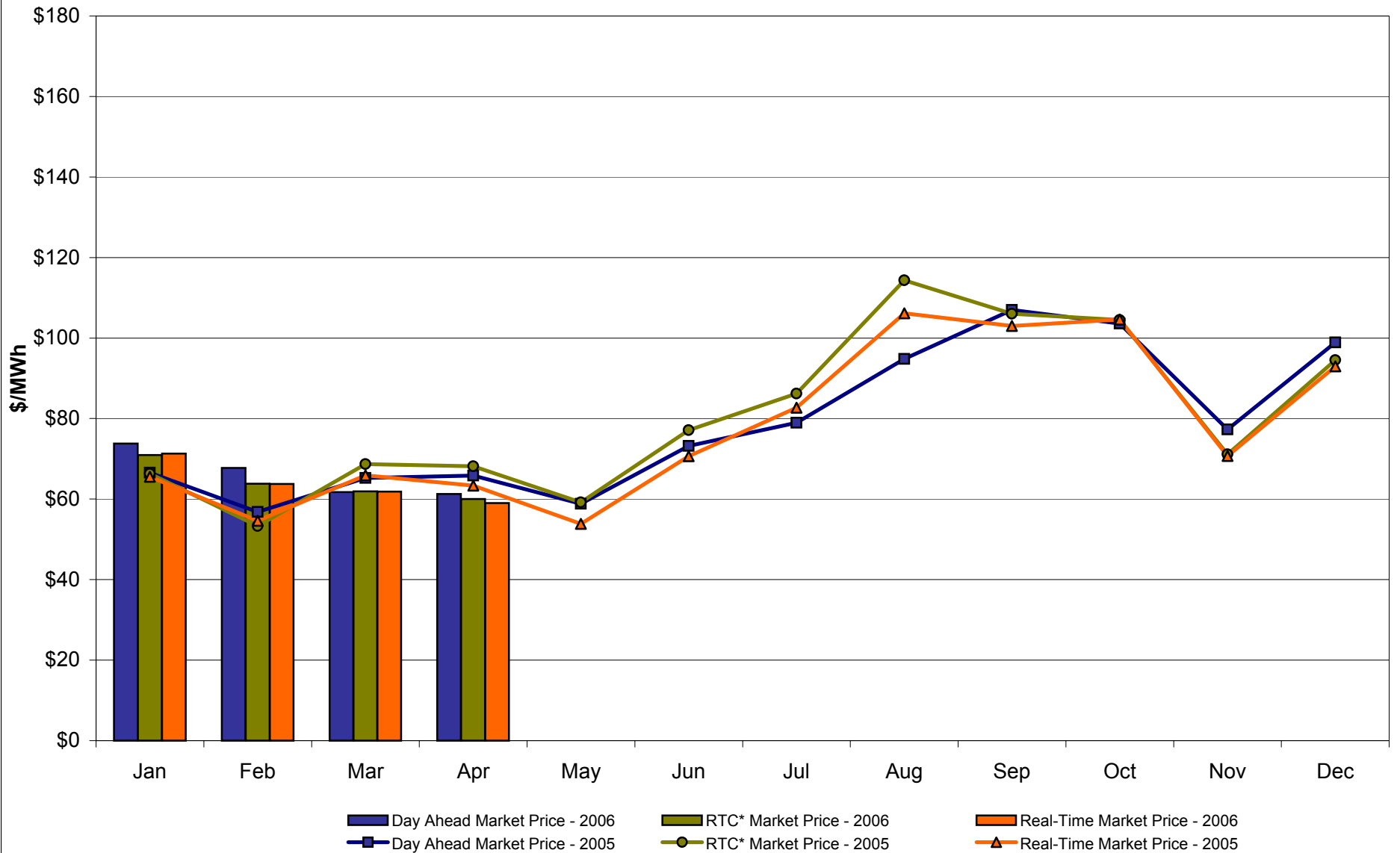
\* Referred to as RTC beginning February 2005.  
Prior to February 2005 known as BME or Hour Ahead Market (HAM).

## Capital Zone F Monthly Average LBMP Prices 2005 - 2006



\* Referred to as RTC beginning February 2005.  
Prior to February 2005 known as BME or Hour Ahead Market (HAM).

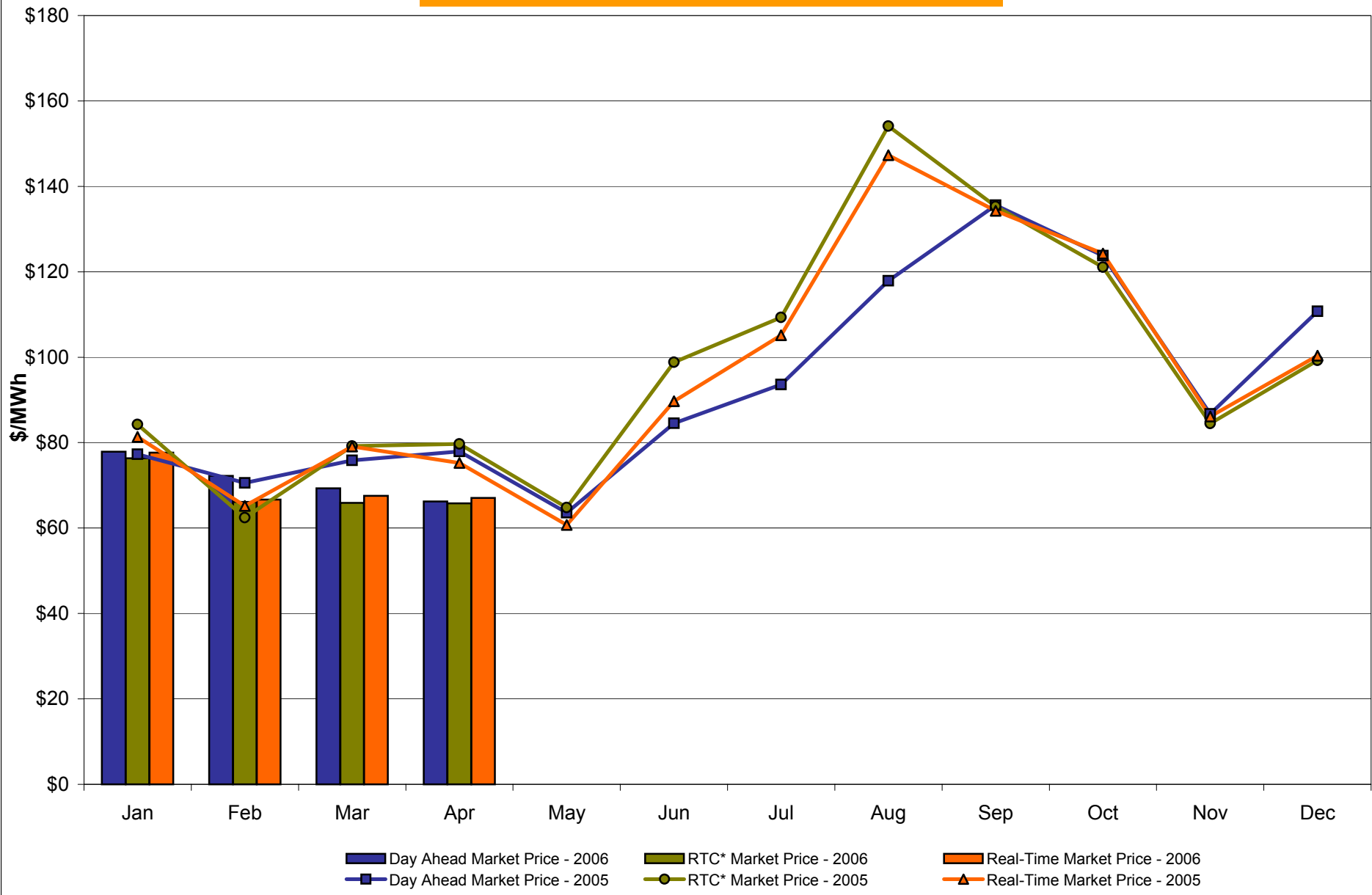
## Hudson Valley Zone G Monthly Average LBMP Prices 2005 - 2006



\* Referred to as RTC beginning February 2005.  
Prior to February 2005 known as BME or Hour Ahead Market (HAM).

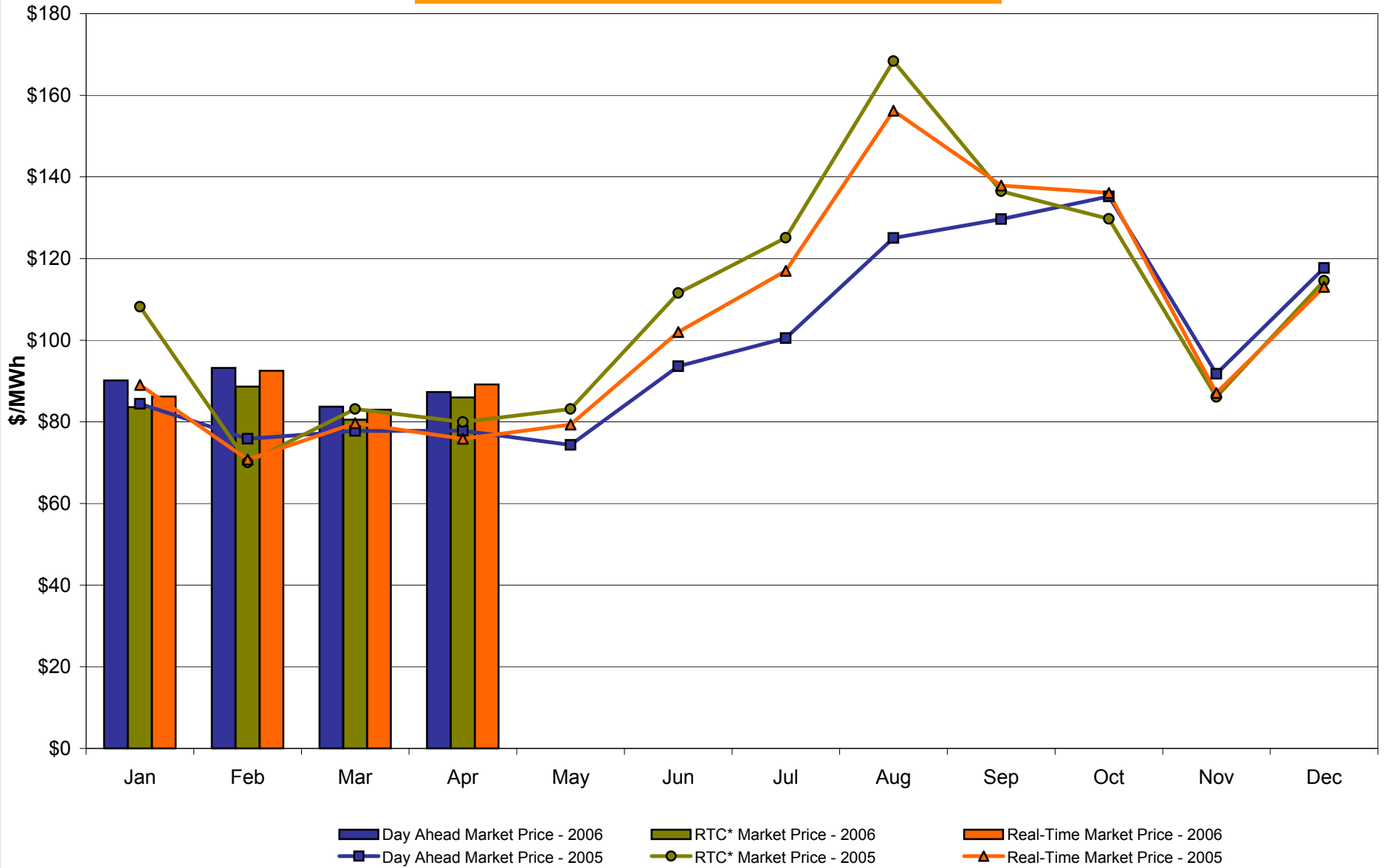


## NYC Zone J Monthly Average LBMP Prices 2005 - 2006



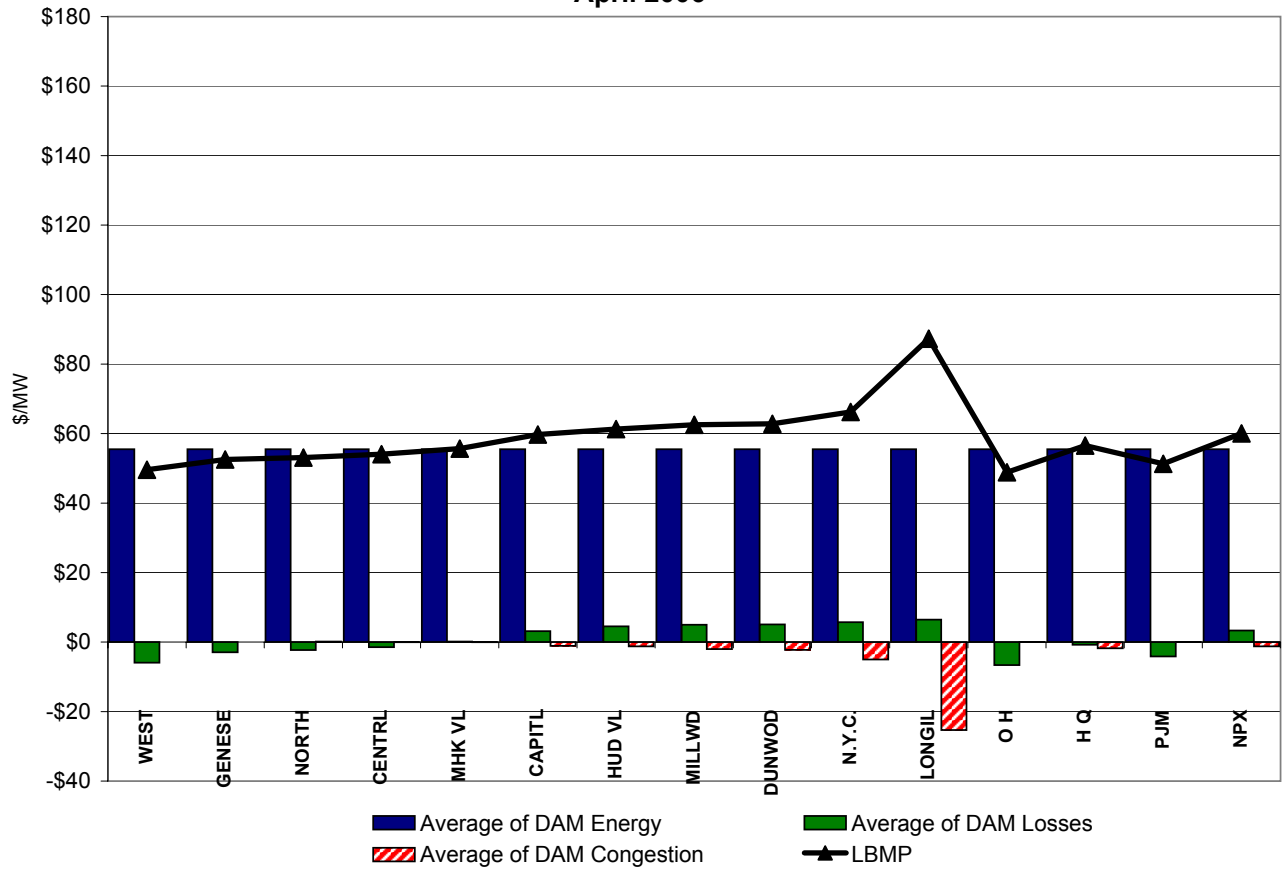
\* Referred to as RTC beginning February 2005.  
Prior to February 2005 known as BME or Hour Ahead Market (HAM).

## Long Island Zone K Monthly Average LBMP Prices 2005 - 2006

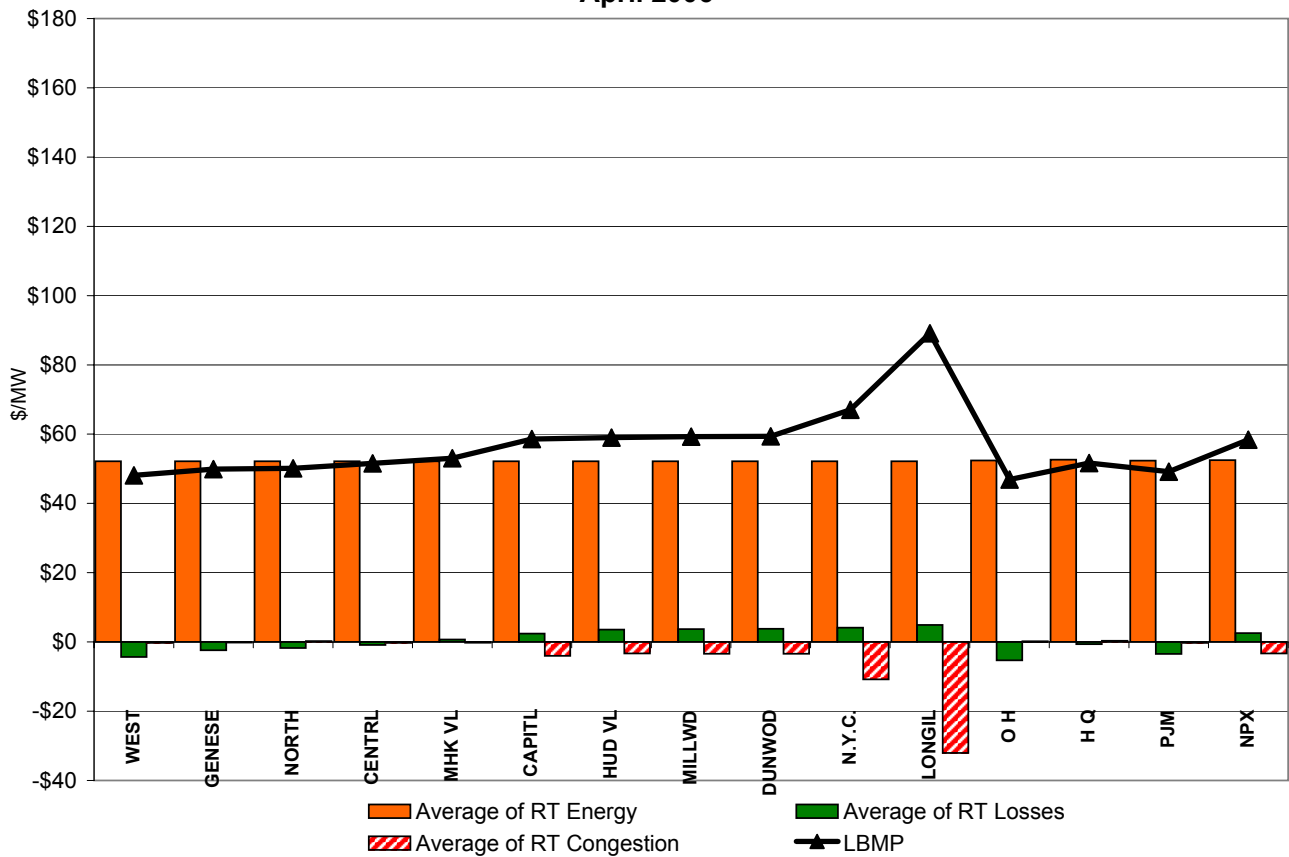


\* Referred to as RTC beginning February 2005.  
Prior to February 2005 known as BME or Hour Ahead Market (HAM).

**DAM Zonal Unweighted Monthly Average LBMP Components  
April 2006**

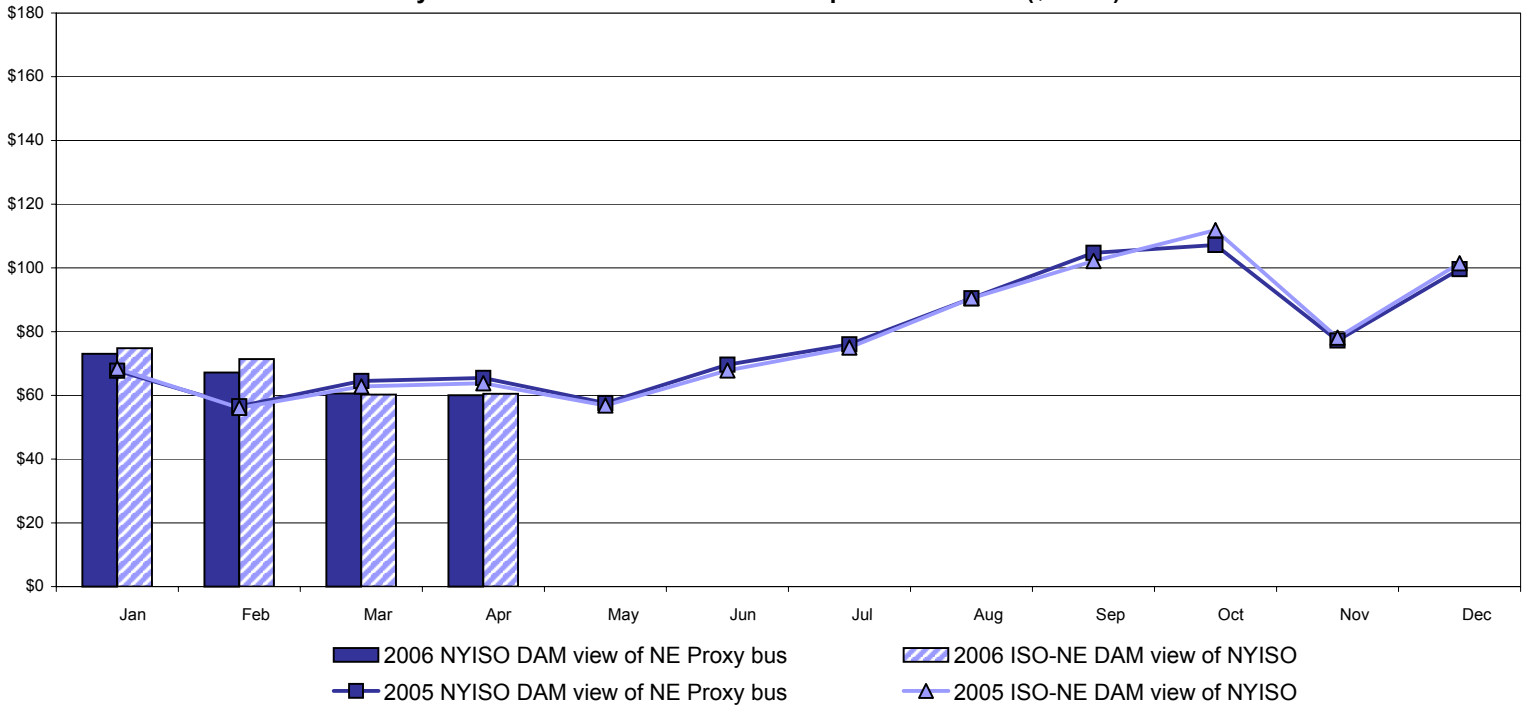


**RT Zonal Unweighted Monthly Average LBMP Components  
April 2006**

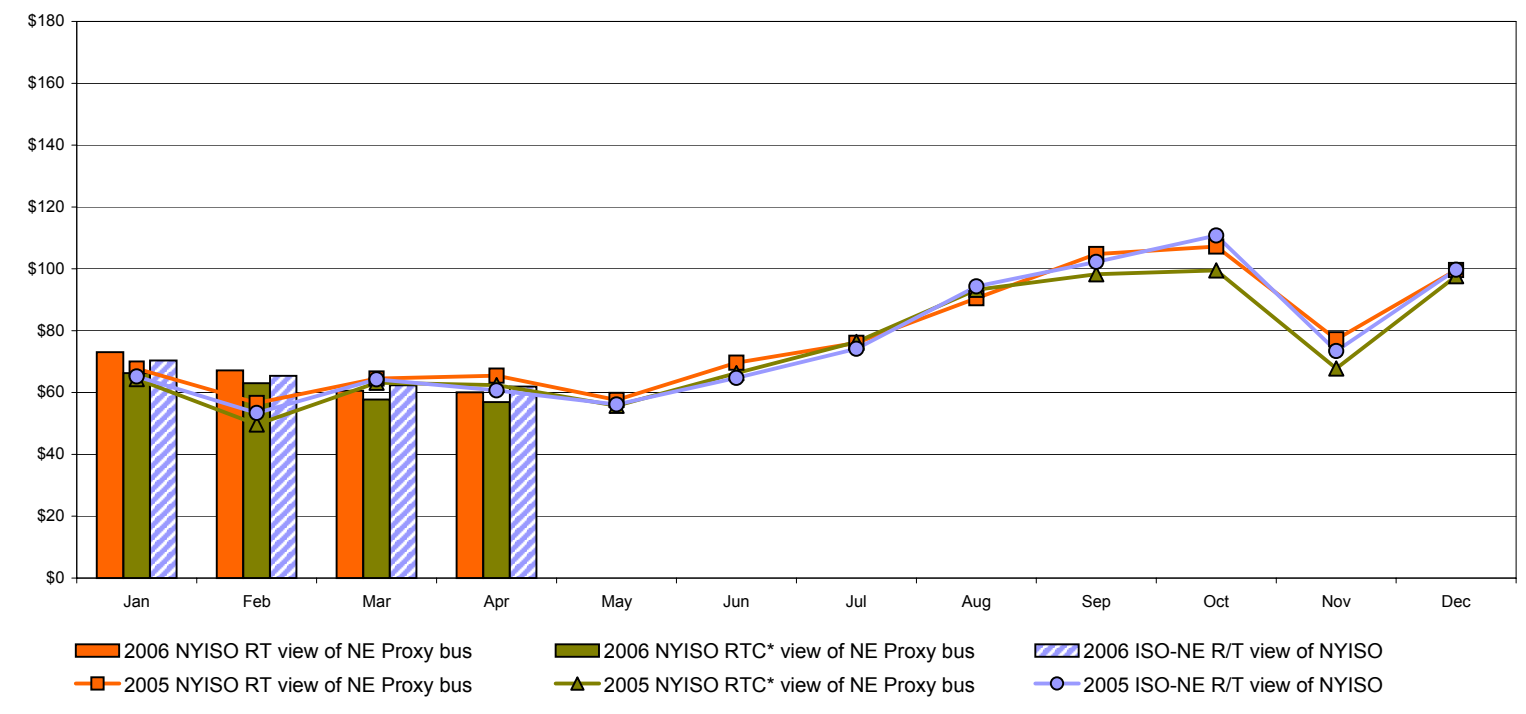


# External Comparison ISO-New England

## Day Ahead Market External Zone Comparison: ISO-NE (\$/MWh)



## Real Time Market External Zone Comparison: ISO-NE (\$/MWh)

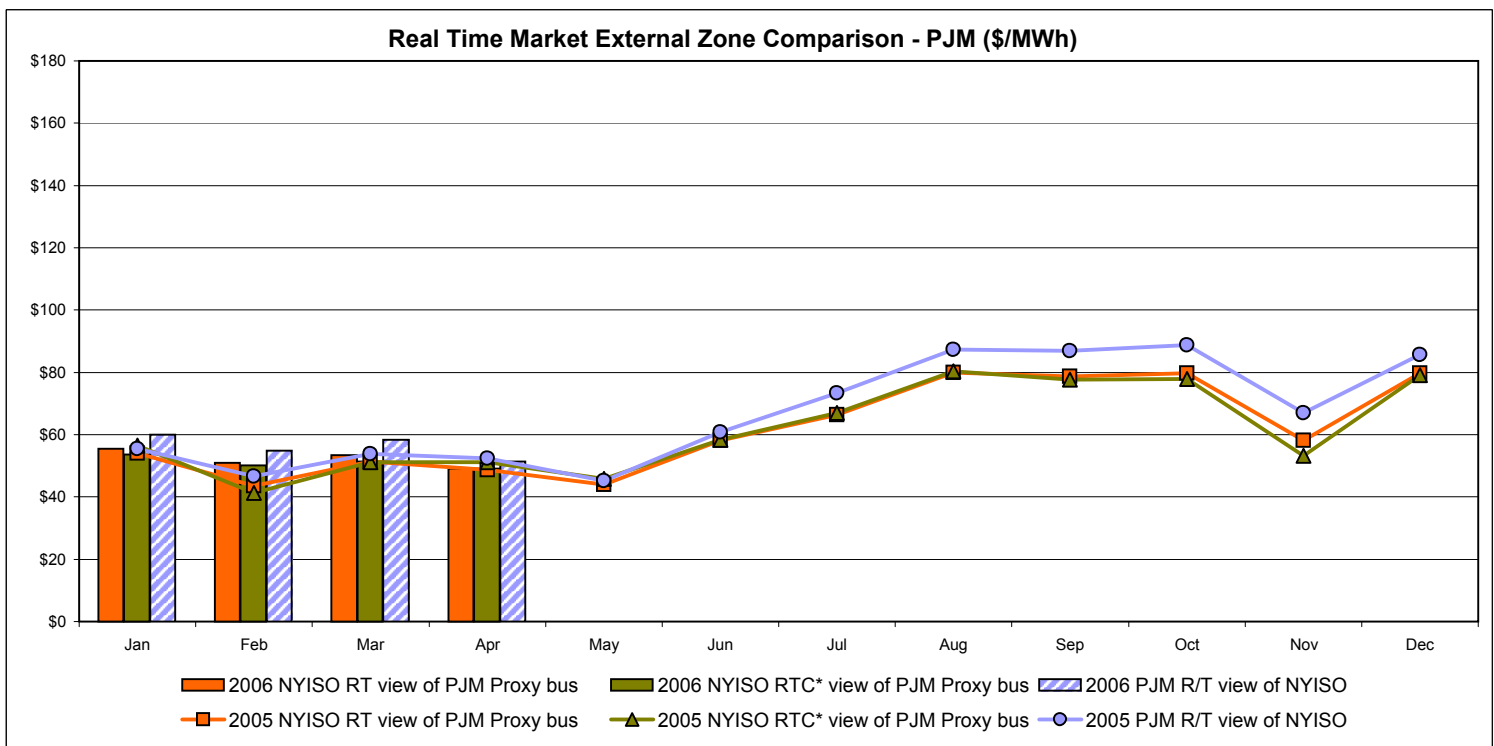
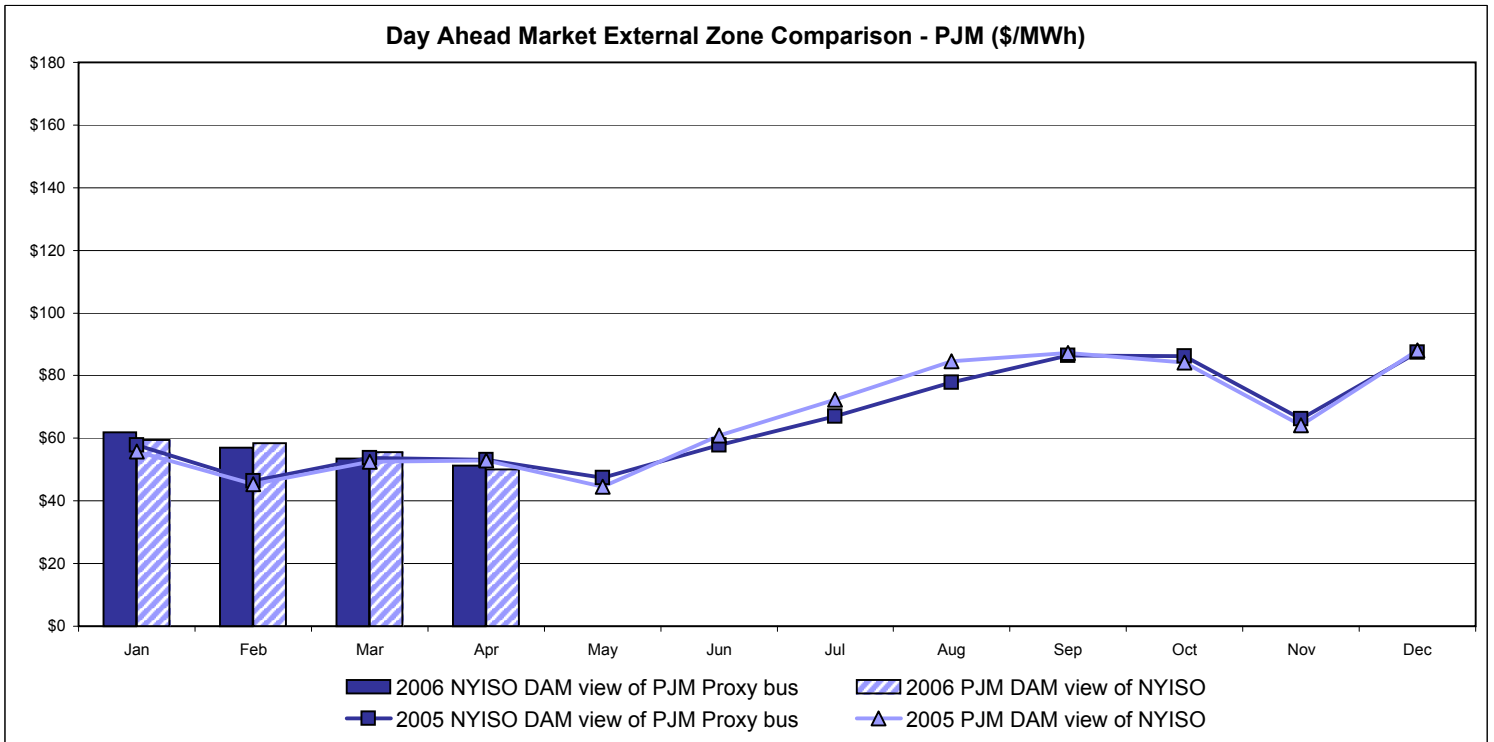


**Note:**

ISO-NE Forecast is an advisory posting @ 18:00 day before.  
 The DAM and R/T prices at the Roseton interface are used for ISO-NE.  
 The DAM and R/T prices at the SandyPond interface are used for NYISO.

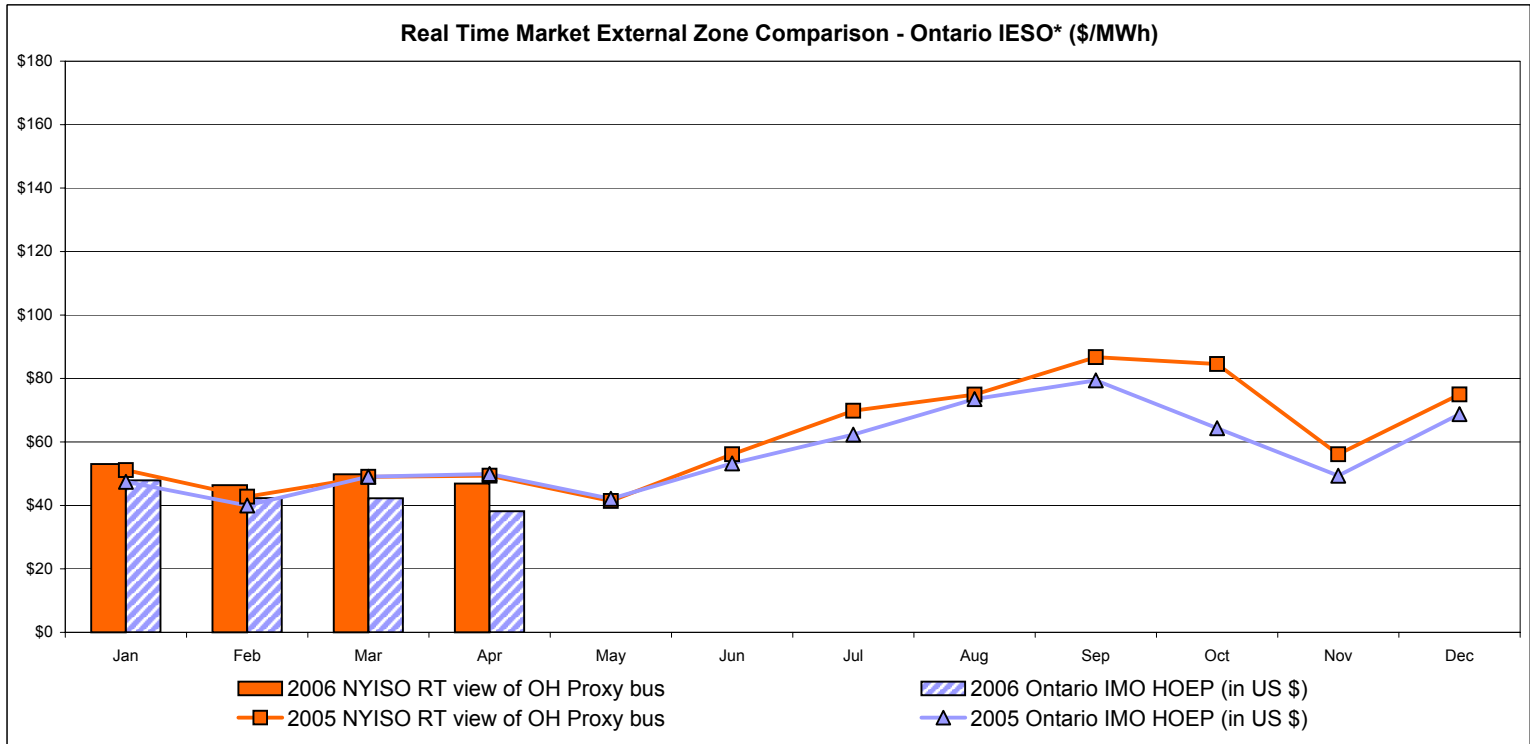
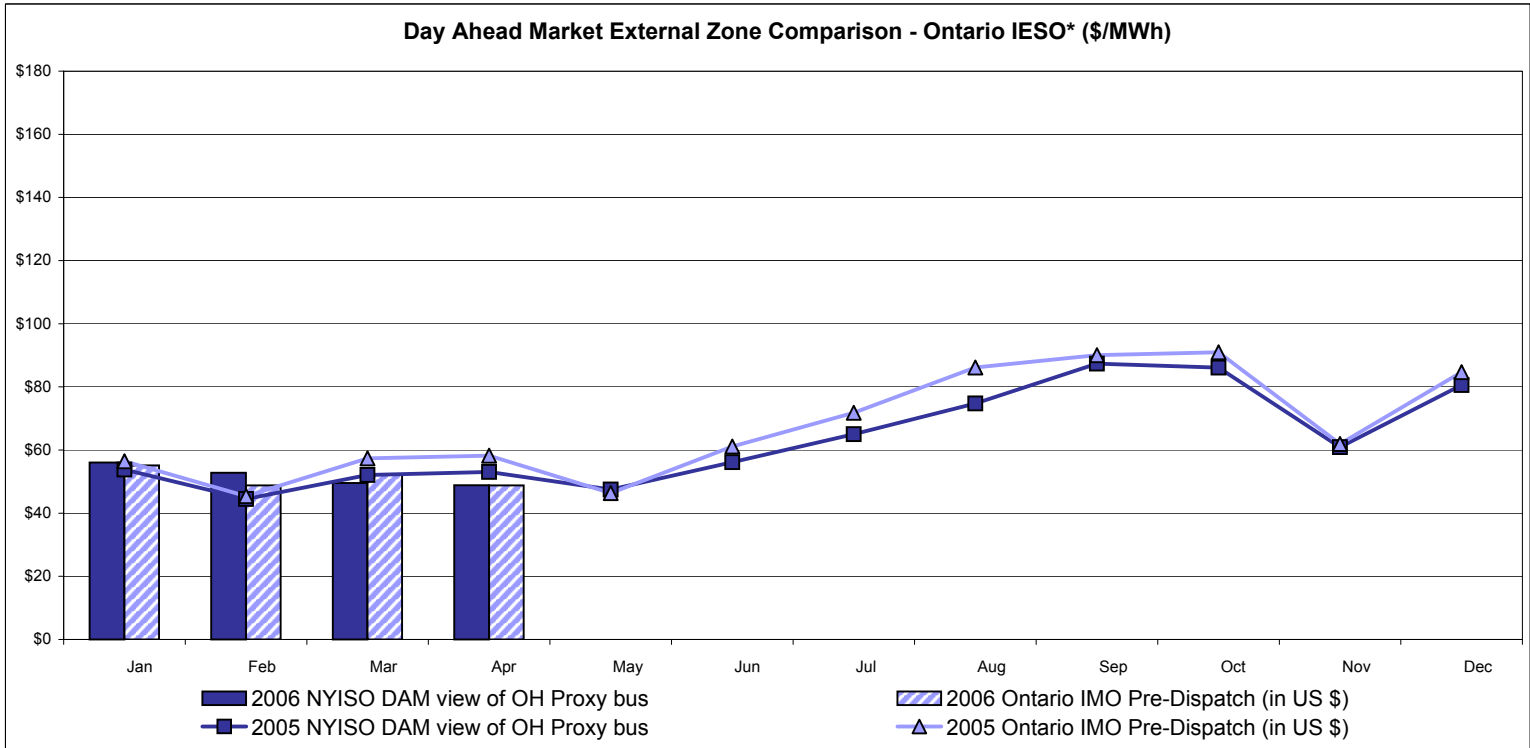
\* Referred to as RTC beginning February 2005.  
 Prior to February 2005 known as BME or Hour Ahead Market (HAM).

## External Comparison PJM



\* Referred to as RTC beginning February 2005.  
Prior to February 2005 known as BME or Hour Ahead Market (HAM).

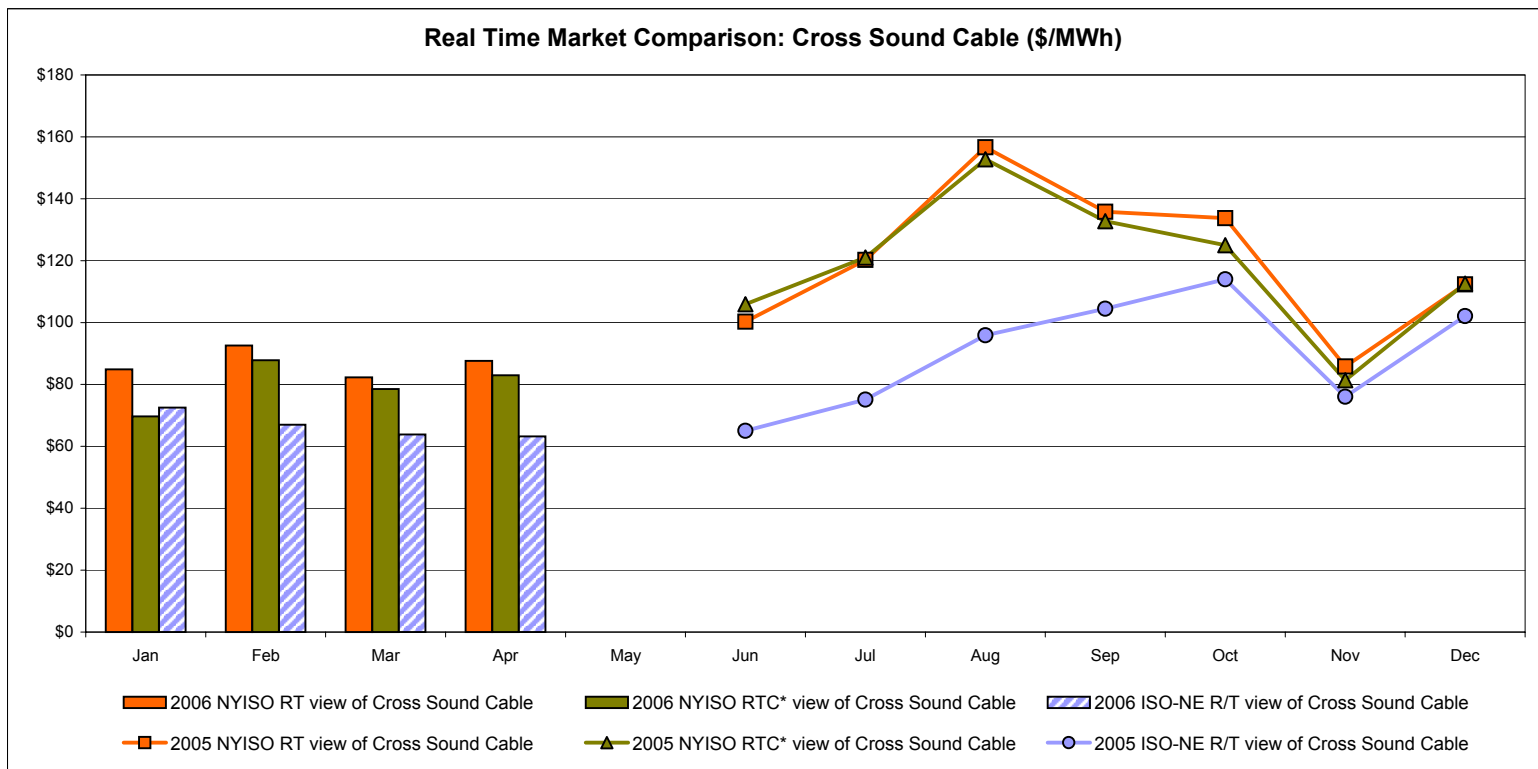
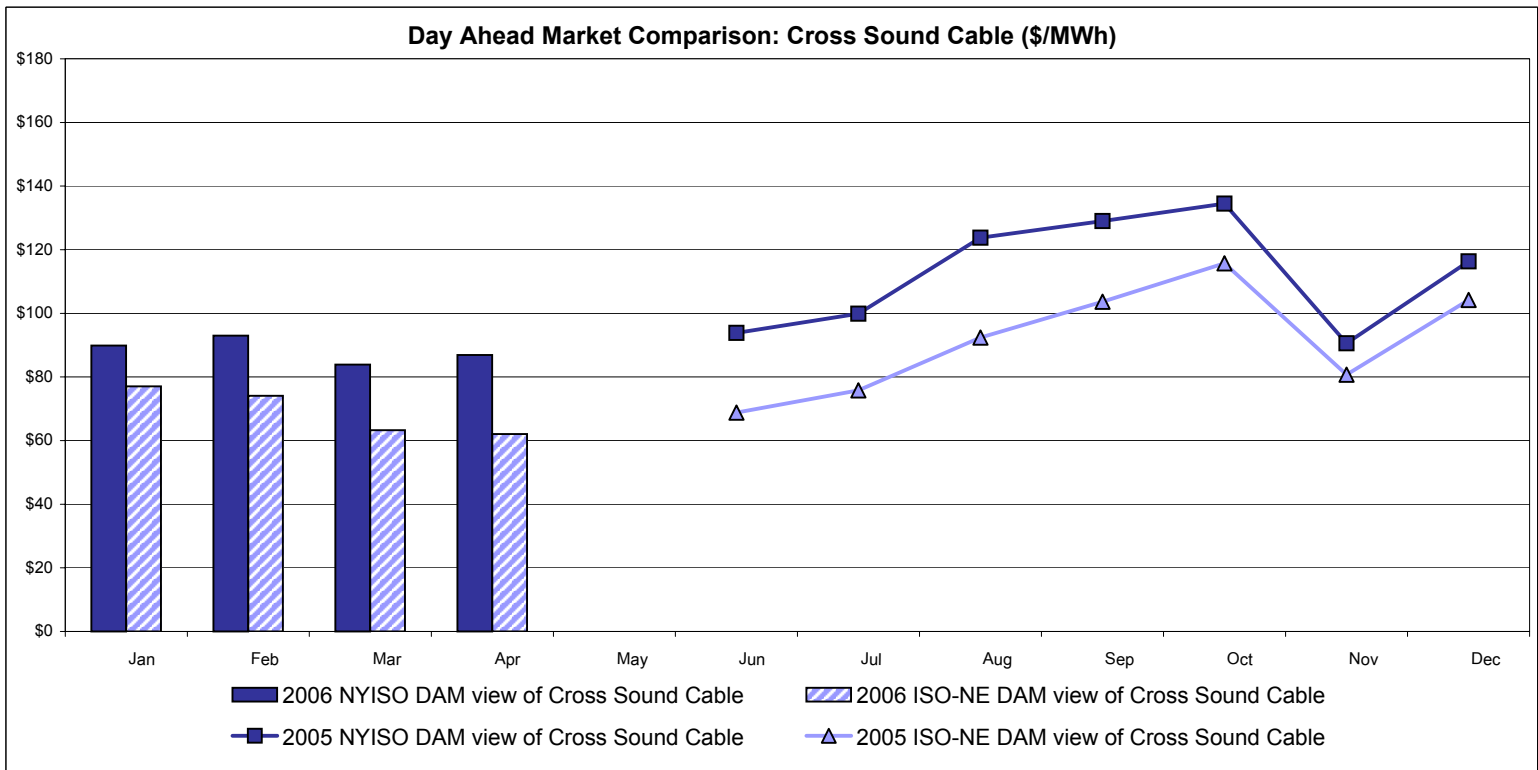
# External Comparison Ontario IESO\*



Notes: Exchange factor used for April 2006 was .87 to US \$  
 HOEP: Hourly Ontario Energy Price  
 Pre-Dispatch: Projected Energy Price

\* Independent Electricity System Operator formerly known as the Independent Electricity Market Operator (IMO).

# External Controllable Line: Cross Sound Cable (New England)



**Note:**

ISO-NE Forecast is an advisory posting @ 18:00 day before.  
 The DAM and R/T prices at the Shorham138 99 interface are used for ISO-NE.  
 The DAM and R/T prices at the CSC interface are used for NYISO.

\* Referred to as RTC beginning February 2005.  
 Prior to February 2005 known as BME or Hour Ahead Market (HAM).

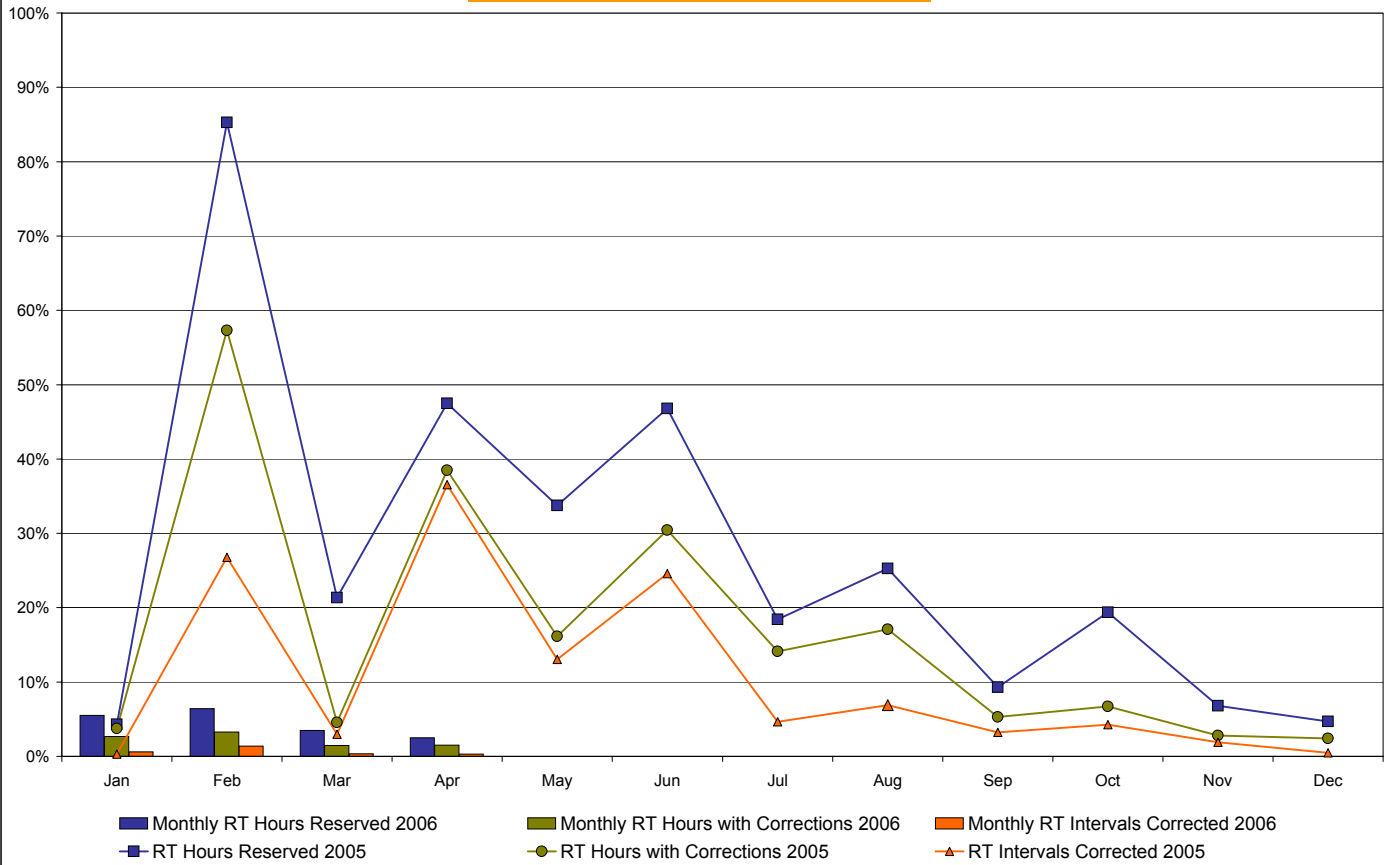
**NYISO Real Time Price Correction Statistics**

<b>2006</b>		<u>January</u>	<u>February</u>	<u>March</u>	<u>April</u>	<u>May</u>	<u>June</u>	<u>July</u>	<u>August</u>	<u>September</u>	<u>October</u>	<u>November</u>	<u>December</u>
<b>Hour Corrections</b>													
Number of hours with corrections	in the month	20	22	11	11								
Number of hours	in the month	744	672	744	720								
% of hours with corrections	in the month	2.69%	3.27%	1.48%	1.53%								
% of hours with corrections	year-to-date	2.69%	2.97%	2.45%	2.22%								
<b>Interval Corrections</b>													
Number of intervals corrected	in the month	54	112	33	27								
Number of intervals	in the month	9,004	8,129	9,035	8,779								
% of intervals corrected	in the month	0.60%	1.38%	0.37%	0.31%								
% of intervals corrected	year-to-date	0.60%	0.97%	0.76%	0.65%								
<b>Hours Reserved</b>													
Number of hours reserved	in the month	41	43	26	18								
Number of hours	in the month	744	672	744	720								
% of hours reserved	in the month	5.51%	6.40%	3.49%	2.50%								
% of hours reserved	year-to-date	5.51%	5.93%	5.09%	4.44%								
<b>Days to Correction *</b>													
Avg. number of days to correction	in the month	2.6	1.9	2.1	1.3								
Avg. number of days to correction	year-to-date	2.6	2.3	2.2	2.0								
<b>Days Without Corrections</b>													
Days without corrections	in the month	19	18	24	20								
Days without corrections	year-to-date	19	37	61	81								
<b>2005</b>		<u>January</u>	<u>February</u>	<u>March</u>	<u>April</u>	<u>May</u>	<u>June</u>	<u>July</u>	<u>August</u>	<u>September</u>	<u>October</u>	<u>November</u>	<u>December</u>
<b>Hour Corrections</b>													
Number of hours with corrections	in the month	28	385	34	277	120	219	105	127	38	50	20	18
Number of hours	in the month	744	672	744	720	744	720	744	744	720	744	720	744
% of hours with corrections	in the month	3.76%	57.29%	4.57%	38.47%	16.13%	30.42%	14.11%	17.07%	5.28%	6.72%	2.78%	2.42%
% of hours with corrections	year-to-date	3.76%	29.17%	20.69%	25.14%	23.29%	24.47%	22.96%	22.21%	20.34%	18.96%	17.50%	16.22%
<b>Interval Corrections</b>													
Number of intervals corrected	in the month	37	2,177	266	3,182	1,170	2,145	421	625	281	386	167	43
Number of intervals	in the month	11,811	8,131	8,961	8,711	8,972	8,729	9,024	9,065	8,741	9,029	8,721	9,115
% of intervals corrected	in the month	0.31%	26.77%	2.97%	36.53%	13.04%	24.57%	4.67%	6.89%	3.21%	4.28%	1.91%	0.47%
% of intervals corrected	year-to-date	0.31%	11.10%	8.58%	15.05%	14.67%	16.23%	14.61%	13.65%	12.54%	11.72%	10.87%	10.00%
<b>Hours Reserved</b>													
Number of hours reserved	in the month	32	573	159	342	251	337	137	188	67	144	49	35
Number of hours	in the month	744	672	744	720	744	720	744	744	720	744	720	744
% of hours reserved	in the month	4.30%	85.27%	21.37%	47.50%	33.74%	46.81%	18.41%	25.27%	9.31%	19.35%	6.81%	4.70%
% of hours reserved	year-to-date	4.30%	42.73%	35.37%	38.40%	37.44%	39.00%	35.99%	34.62%	31.84%	30.56%	28.43%	26.42%
<b>Days to Correction *</b>													
Avg. number of days to correction	in the month	-	-	-	-	-	-	-	6.5	3.4	3.0	2.8	2.8
Avg. number of days to correction	year-to-date	-	-	-	-	-	-	-	-	-	-	-	-
<b>Days Without Corrections</b>													
Days without corrections	in the month	12	4	16	3	4	4	6	6	17	17	22	19
Days without corrections	year-to-date	12	16	32	35	39	43	49	55	72	89	111	130

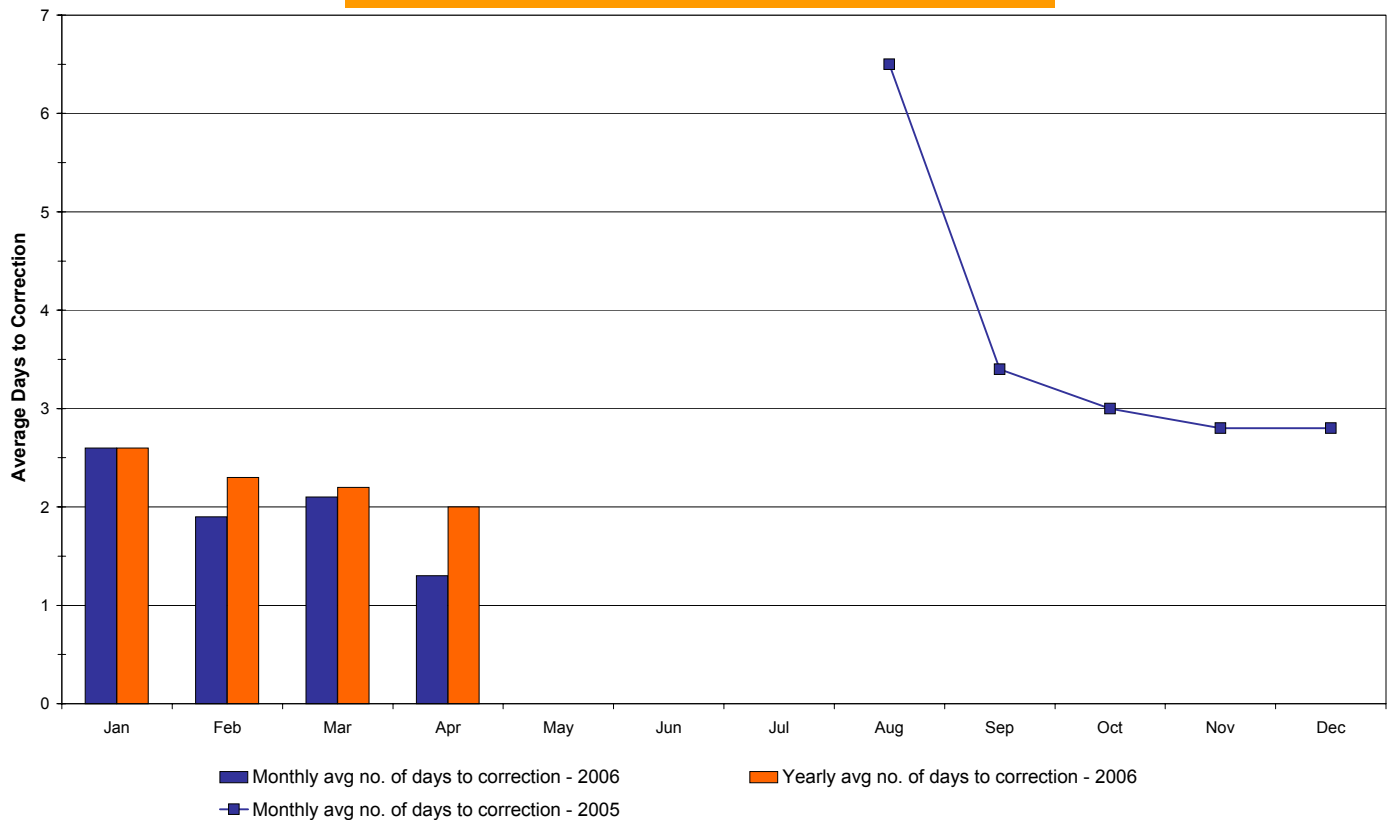
\* Calendar days from reservation date. Data available from August 2005.



### Percentage of Real-Time Corrections

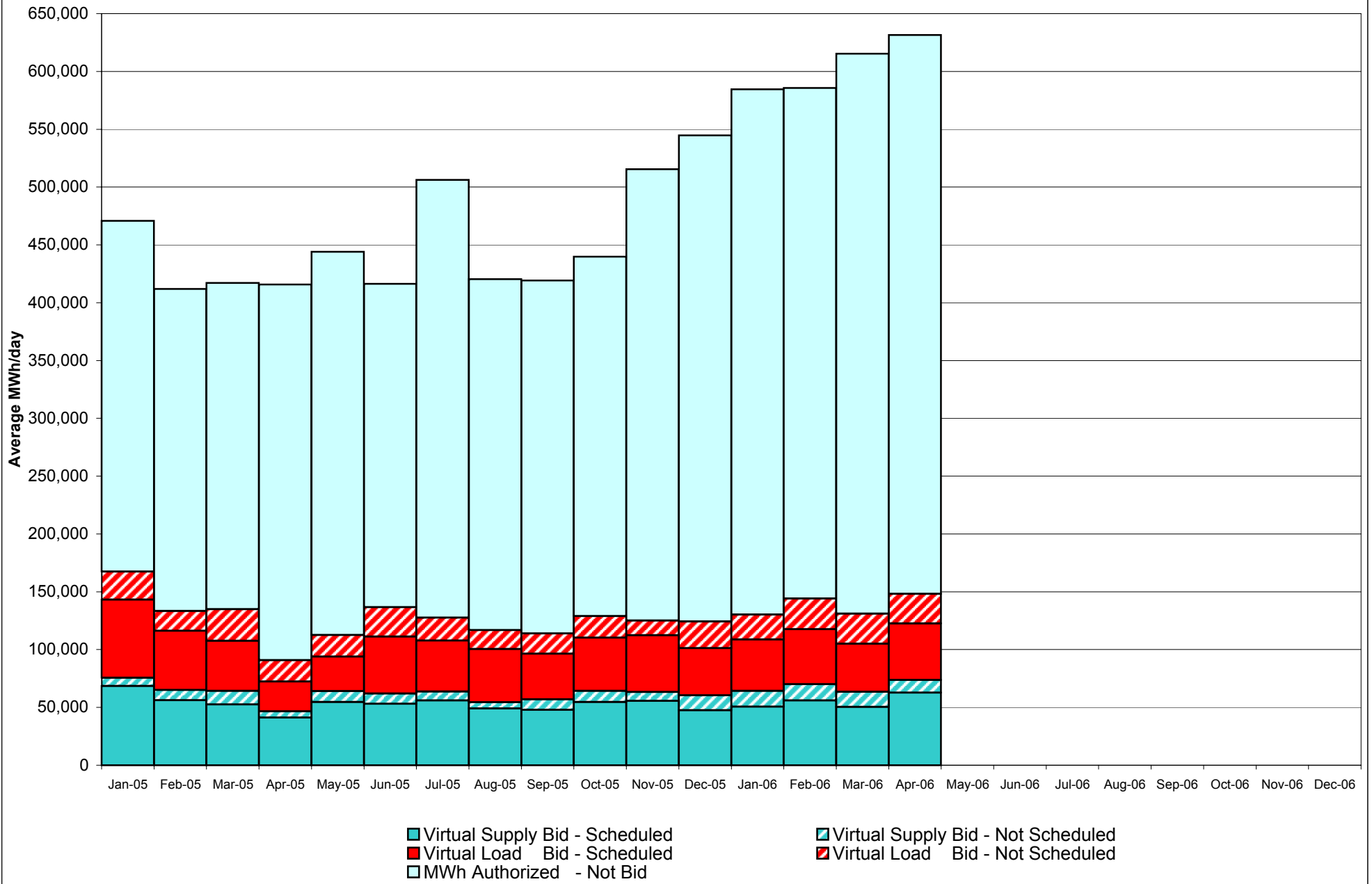


### Annual average time period for making Price Corrections (from reservation date) \*

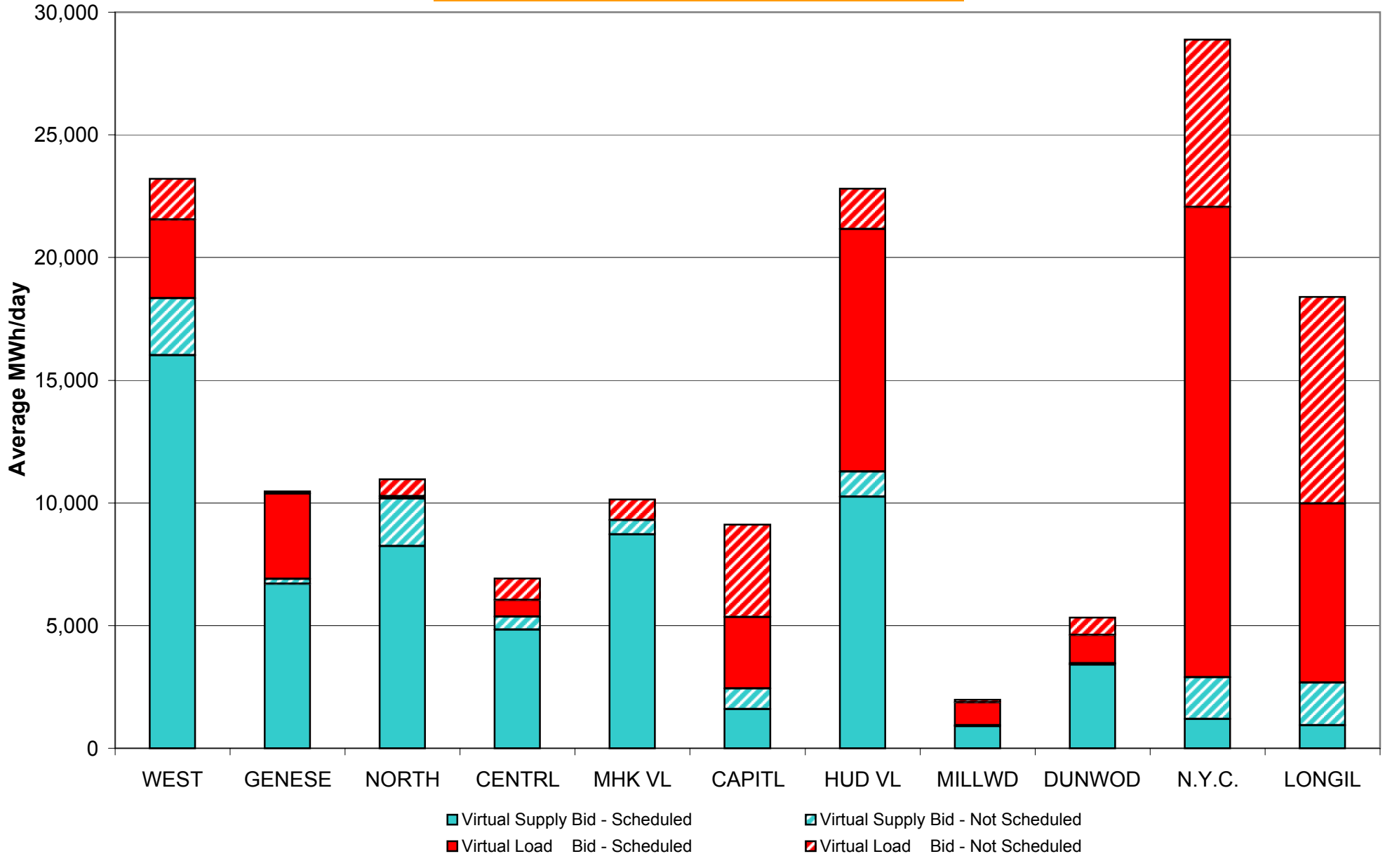


\* Calendar days from reservation date. Data available from August 2005.

**NYISO Virtual Trading  
Average MWh per day**



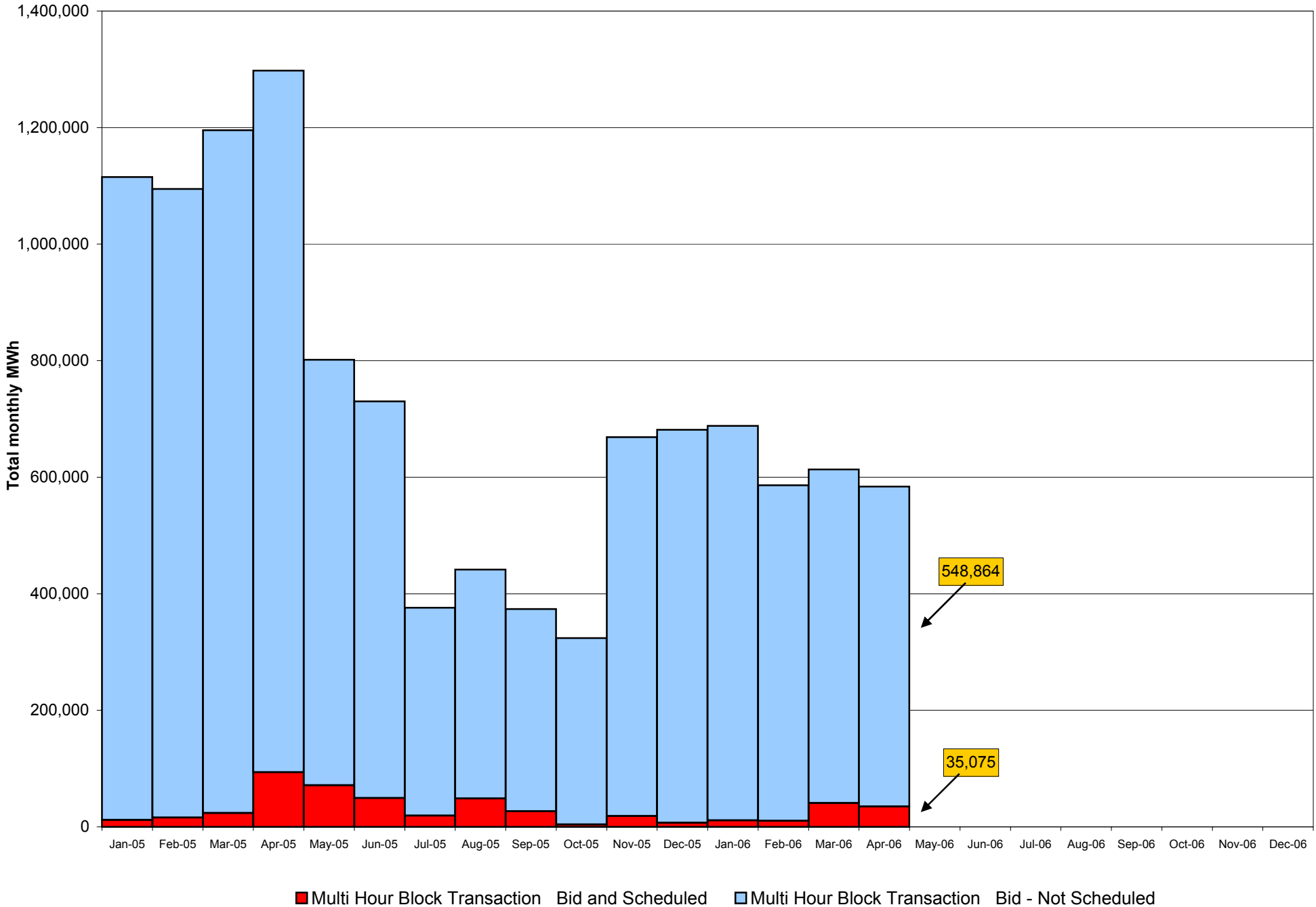
## Virtual Load and Supply Zonal Statistics April 2006



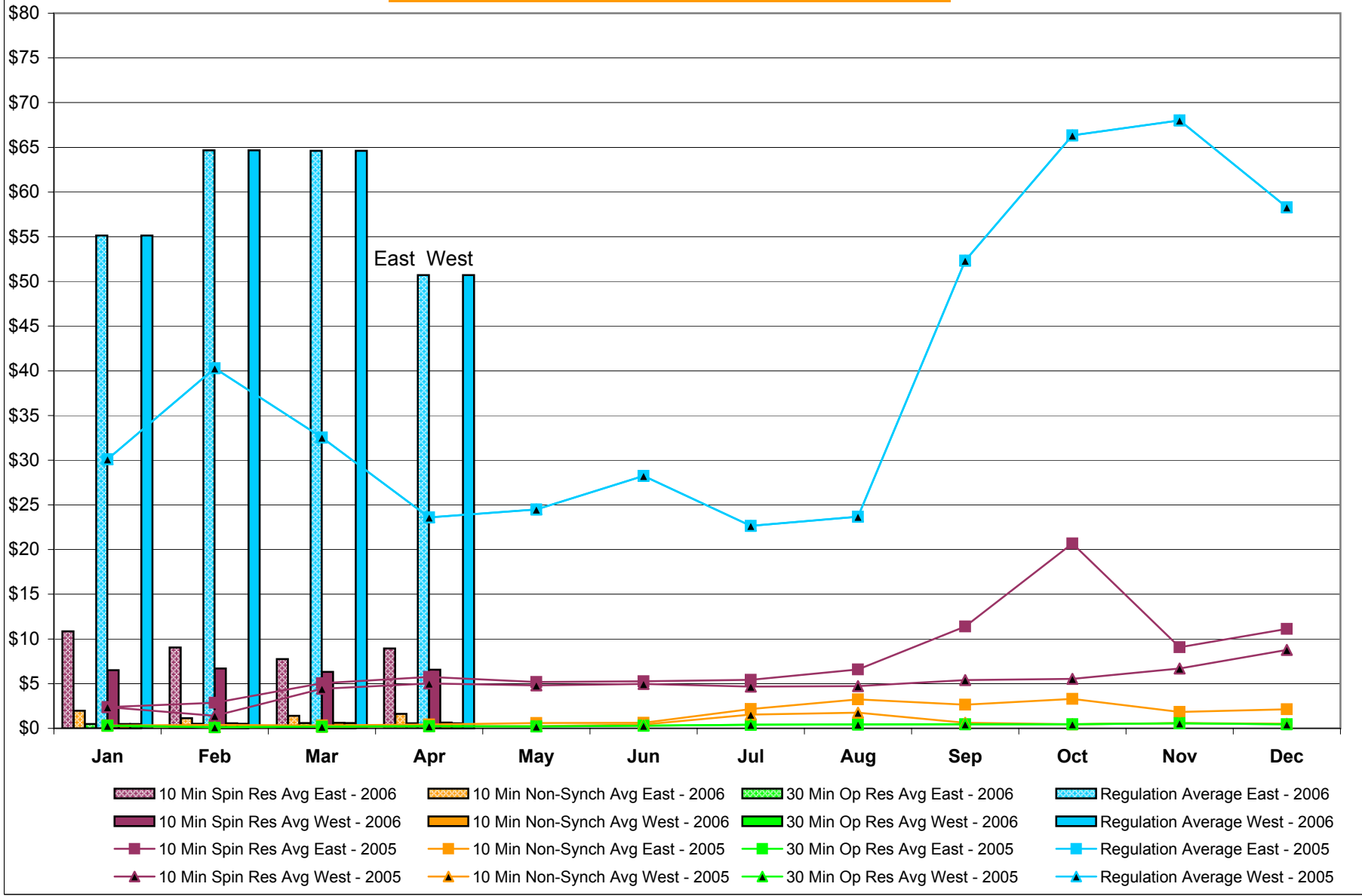
**Virtual Load and Supply Zonal Statistics (Average MWh/day) - 2006**

		Virtual Load Bid		Virtual Supply Bid				Virtual Load Bid		Virtual Supply Bid				Virtual Load Bid		Virtual Supply Bid	
Zone	Date	Scheduled	Not Scheduled	Scheduled	Not Scheduled	Zone	Date	Scheduled	Not Scheduled	Scheduled	Not Scheduled	Zone	Date	Scheduled	Not Scheduled	Scheduled	Not Scheduled
WEST	Jan-06	5,890	2,304	11,610	3,141	MHK VL	Jan-06	46	902	5,884	1,636	DUNWOD	Jan-06	745	644	3,267	26
	Feb-06	5,103	3,356	10,907	3,042		Feb-06	17	930	6,935	891		Feb-06	1,714	399	2,441	42
	Mar-06	3,237	1,807	13,710	2,979		Mar-06	42	932	4,940	937		Mar-06	1,097	47	2,163	27
	Apr-06	3,206	1,676	16,016	2,317		Apr-06	3	841	8,714	579		Apr-06	1,144	722	3,403	60
	May-06						May-06						May-06				
	Jun-06						Jun-06						Jun-06				
	Jul-06						Jul-06						Jul-06				
	Aug-06						Aug-06						Aug-06				
	Sep-06						Sep-06						Sep-06				
	Oct-06						Oct-06						Oct-06				
	Nov-06						Nov-06						Nov-06				
	Dec-06						Dec-06						Dec-06				
GENESE	Jan-06	1,831	708	6,806	73	CAPITL	Jan-06	3,624	1,646	1,192	48	N.Y.C.	Jan-06	19,500	4,668	1,330	3,334
	Feb-06	2,434	208	6,652	55		Feb-06	5,155	2,682	1,584	65		Feb-06	16,986	7,228	2,463	2,793
	Mar-06	1,856	838	6,734	53		Mar-06	2,850	3,171	643	59		Mar-06	12,401	7,131	4,092	2,202
	Apr-06	3,478	92	6,693	205		Apr-06	2,915	3,767	1,584	847		Apr-06	19,173	6,820	1,189	1,699
	May-06						May-06						May-06				
	Jun-06						Jun-06						Jun-06				
	Jul-06						Jul-06						Jul-06				
	Aug-06						Aug-06						Aug-06				
	Sep-06						Sep-06						Sep-06				
	Oct-06						Oct-06						Oct-06				
	Nov-06						Nov-06						Nov-06				
	Dec-06						Dec-06						Dec-06				
NORTH	Jan-06	262	22	5,961	1,658	HUD VL	Jan-06	2,086	2,026	8,595	1,717	LONGIL	Jan-06	8,207	6,064	1,091	1,891
	Feb-06	139	101	6,749	2,570		Feb-06	3,722	1,834	8,989	1,964		Feb-06	9,345	8,197	1,088	2,511
	Mar-06	264	21	7,069	2,838		Mar-06	8,898	1,851	5,128	1,716		Mar-06	8,449	10,059	991	2,357
	Apr-06	96	695	8,243	1,926		Apr-06	9,888	1,640	10,242	1,034		Apr-06	7,291	8,424	930	1,750
	May-06						May-06						May-06				
	Jun-06						Jun-06						Jun-06				
	Jul-06						Jul-06						Jul-06				
	Aug-06						Aug-06						Aug-06				
	Sep-06						Sep-06						Sep-06				
	Oct-06						Oct-06						Oct-06				
	Nov-06						Nov-06						Nov-06				
	Dec-06						Dec-06						Dec-06				
CENTRL	Jan-06	713	28	3,870	103	MILLWD	Jan-06	1,531	2,596	1,065	11	NYISO	Jan-06	44,436	21,609	50,671	13,639
	Feb-06	395	27	7,081	165		Feb-06	2,540	1,560	1,067	24		Feb-06	47,550	26,523	55,956	14,122
	Mar-06	581	28	4,683	31		Mar-06	1,799	135	189	7		Mar-06	41,475	26,020	50,342	13,205
	Apr-06	673	882	4,838	522		Apr-06	943	97	904	28		Apr-06	48,811	25,655	62,755	10,967
	May-06						May-06						May-06				
	Jun-06						Jun-06						Jun-06				
	Jul-06						Jul-06						Jul-06				
	Aug-06						Aug-06						Aug-06				
	Sep-06						Sep-06						Sep-06				
	Oct-06						Oct-06						Oct-06				
	Nov-06						Nov-06						Nov-06				
	Dec-06						Dec-06						Dec-06				

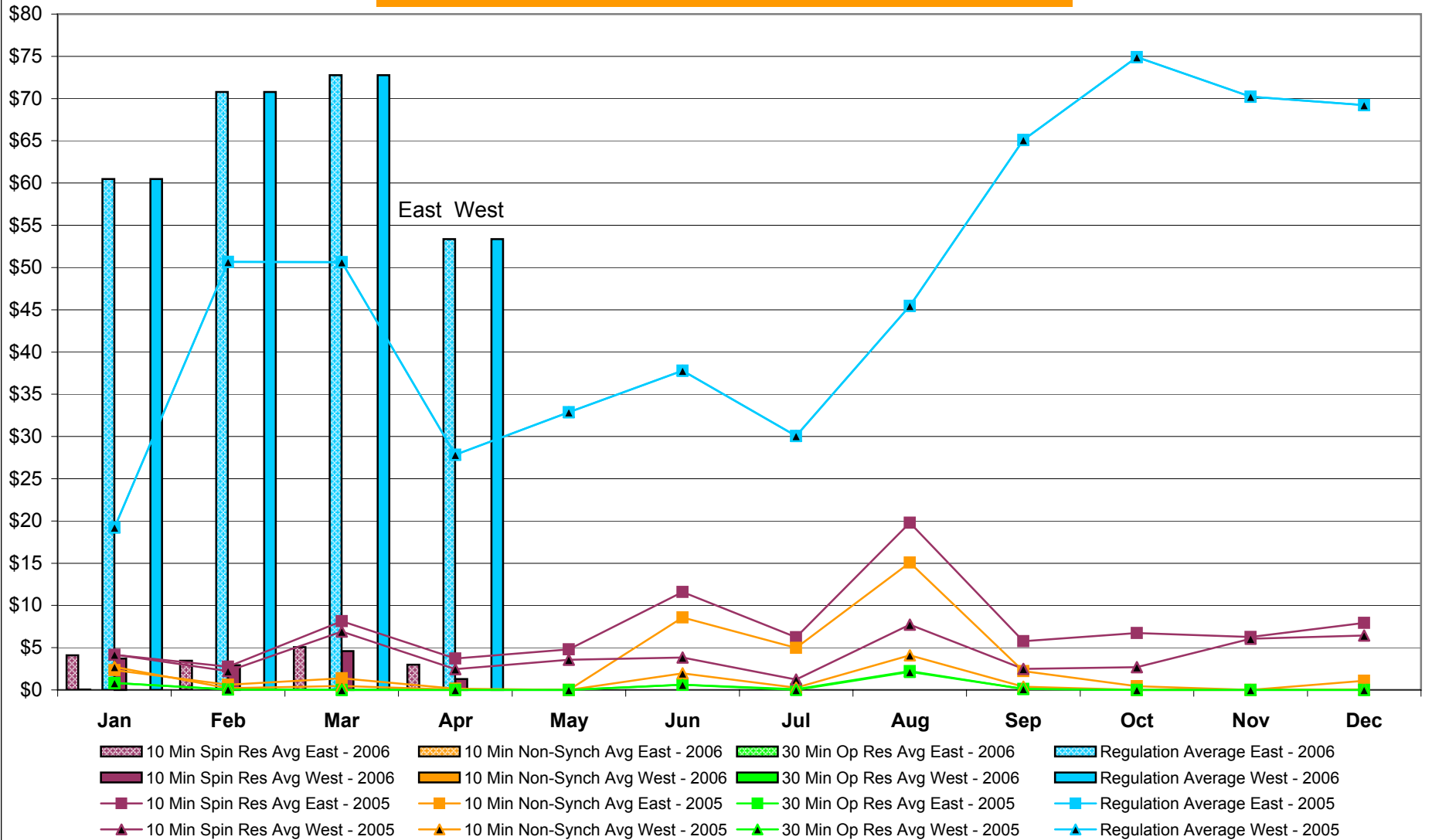
# NYISO Multi Hour Block Transactions Monthly Total MWh



### NYISO Monthly Average Ancillary Service Prices Day Ahead Market 2005 - 2006

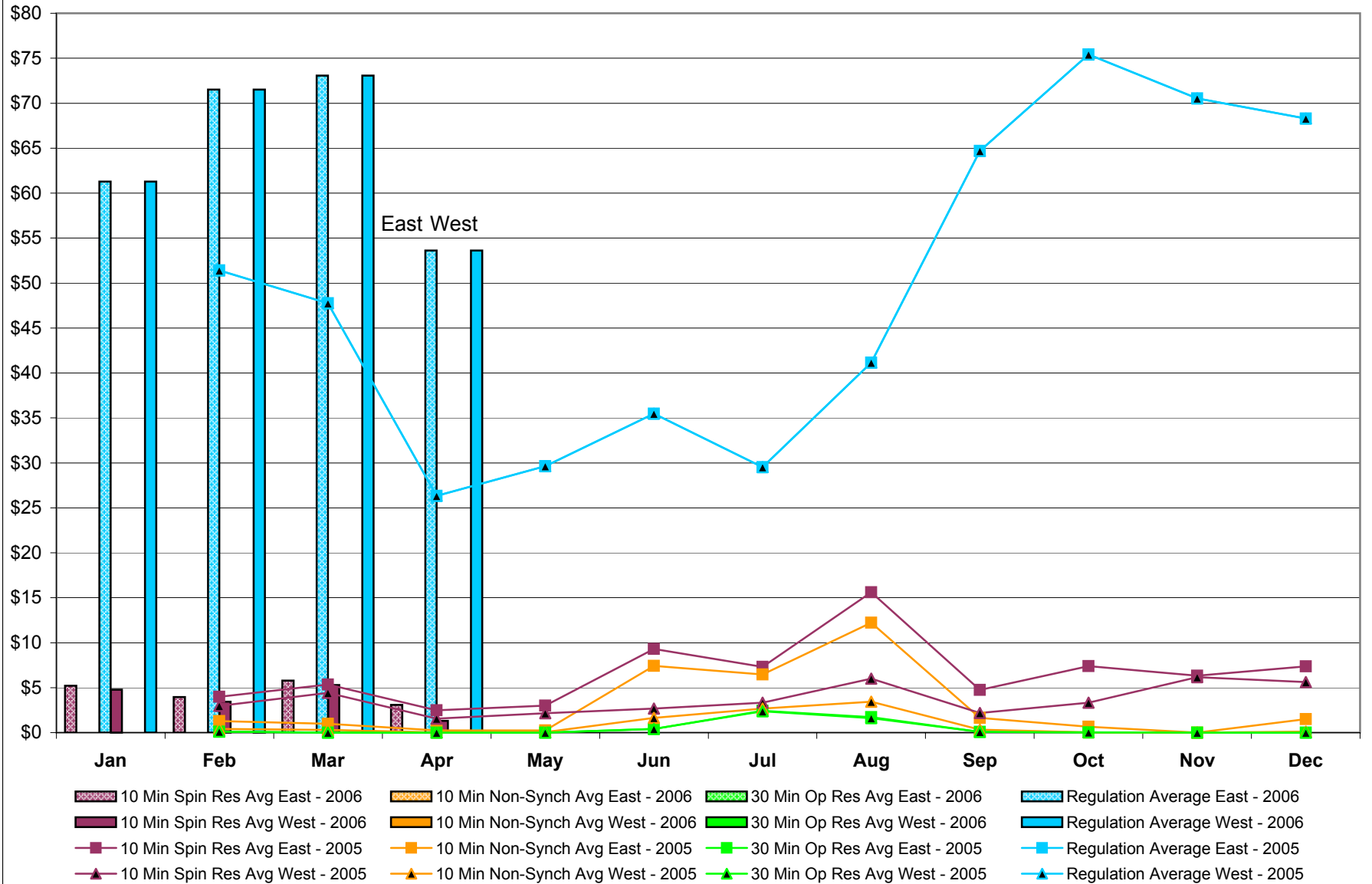


## NYISO Monthly Average Ancillary Service Prices RTC\* Market 2005 - 2006



\* Referred to as RTC beginning February 2005  
Prior to February 2005 known as BME or Hour Ahead Market (HAM)

## NYISO Monthly Average Ancillary Service Prices Real Time Market\* 2005 - 2006



\* The Real Time Ancillary Market began in February 2005



## NYISO Markets Ancillary Services Statistics - Unweighted Price (\$/MWH)

<b>2006</b>	<u>January</u>	<u>February</u>	<u>March</u>	<u>April</u>	<u>May</u>	<u>June</u>	<u>July</u>	<u>August</u>	<u>September</u>	<u>October</u>	<u>November</u>	<u>December</u>
<b>Day Ahead Market</b>												
10 Min Spin East	10.86	9.06	7.76	8.94								
10 Min Spin West	6.50	6.70	6.32	6.56								
10 Min Non Synch East	1.97	1.15	1.39	1.63								
10 Min Non Synch West	0.50	0.56	0.62	0.66								
30 Min East	0.48	0.52	0.59	0.58								
30 Min West	0.48	0.52	0.59	0.58								
Regulation East	55.13	64.65	64.62	50.71								
Regulation West	55.13	64.65	64.62	50.71								
<b>RTC* Market</b>												
10 Min Spin East	4.10	3.44	5.07	3.00								
10 Min Spin West	3.71	2.93	4.59	1.28								
10 Min Non Synch East	0.02	0.01	0.00	0.01								
10 Min Non Synch West	0.00	0.00	0.00	0.00								
30 Min East	0.00	0.00	0.00	0.00								
30 Min West	0.00	0.00	0.00	0.00								
Regulation East	60.46	70.79	72.76	53.37								
Regulation West	60.46	70.79	72.76	53.37								
<b>Real Time Market**</b>												
10 Min Spin East	5.20	3.96	5.78	3.07								
10 Min Spin West	4.78	3.43	5.30	1.32								
10 Min Non Synch East	0.01	0.00	0.00	0.01								
10 Min Non Synch West	0.00	0.00	0.00	0.00								
30 Min East	0.00	0.00	0.00	0.00								
30 Min West	0.00	0.00	0.00	0.00								
Regulation East	61.28	71.52	73.06	53.62								
Regulation West	61.28	71.52	73.06	53.62								
<b>2005</b>	<u>January</u>	<u>February</u>	<u>March</u>	<u>April</u>	<u>May</u>	<u>June</u>	<u>July</u>	<u>August</u>	<u>September</u>	<u>October</u>	<u>November</u>	<u>December</u>
<b>Day Ahead Market</b>												
10 Min Spin East	2.38	2.87	5.06	5.76	5.19	5.26	5.44	6.59	11.38	20.70	9.08	11.12
10 Min Spin West	2.37	1.39	4.43	5.03	4.80	4.96	4.68	4.73	5.41	5.54	6.68	8.77
10 Min Non Synch East	0.31	0.37	0.31	0.44	0.60	0.61	2.16	3.25	2.65	3.31	1.82	2.14
10 Min Non Synch West	0.31	0.13	0.20	0.24	0.23	0.43	1.54	1.75	0.63	0.47	0.59	0.52
30 Min East	0.31	0.13	0.19	0.24	0.22	0.29	0.41	0.44	0.47	0.46	0.57	0.47
30 Min West	0.31	0.13	0.19	0.24	0.22	0.29	0.41	0.44	0.47	0.46	0.57	0.47
Regulation East	30.10	40.28	32.53	23.61	24.49	28.23	22.66	23.67	52.33	66.33	68.02	58.28
Regulation West	30.10	40.28	32.53	23.61	24.49	28.23	22.66	23.67	52.33	66.33	68.02	58.28
<b>RTC* Market</b>												
10 Min Spin East	4.15	2.75	8.13	3.71	4.80	11.61	6.23	19.80	5.75	6.72	6.25	7.94
10 Min Spin West	4.20	2.23	6.90	2.46	3.58	3.84	1.24	7.72	2.50	2.69	6.06	6.45
10 Min Non Synch East	2.35	0.62	1.38	0.14	0.00	8.58	4.96	15.08	2.22	0.44	0.01	1.07
10 Min Non Synch West	2.72	0.21	0.47	0.03	0.00	1.96	0.25	4.09	0.37	0.00	0.00	0.06
30 Min East	0.83	0.05	0.00	0.00	0.00	0.62	0.08	2.22	0.12	0.00	0.00	0.00
30 Min West	0.83	0.05	0.00	0.00	0.00	0.61	0.00	2.15	0.12	0.00	0.00	0.00
Regulation East	19.23	50.66	50.65	27.85	32.87	37.80	30.07	45.47	65.10	74.90	70.23	69.23
Regulation West	19.23	50.66	50.65	27.85	32.87	37.80	30.07	45.47	65.10	74.90	70.23	69.23
<b>Real Time Market**</b>												
10 Min Spin East	-	3.99	5.34	2.47	3.00	9.30	7.30	15.60	4.75	7.40	6.32	7.36
10 Min Spin West	-	2.97	4.42	1.56	2.16	2.69	3.33	5.99	2.19	3.34	6.16	5.62
10 Min Non Synch East	-	1.27	0.98	0.25	0.24	7.43	6.46	12.22	1.63	0.65	0.00	1.49
10 Min Non Synch West	-	0.41	0.29	0.02	0.07	1.63	2.68	3.44	0.33	0.01	0.00	0.12
30 Min East	-	0.12	0.00	0.00	0.00	0.40	2.43	1.71	0.09	0.01	0.00	0.00
30 Min West	-	0.11	0.00	0.00	0.00	0.40	2.36	1.61	0.09	0.01	0.00	0.00
Regulation East	-	51.41	47.74	26.33	29.62	35.47	29.52	41.14	64.70	75.41	70.52	68.30
Regulation West	-	51.41	47.74	26.33	29.62	35.47	29.52	41.13	64.70	75.41	70.52	68.30

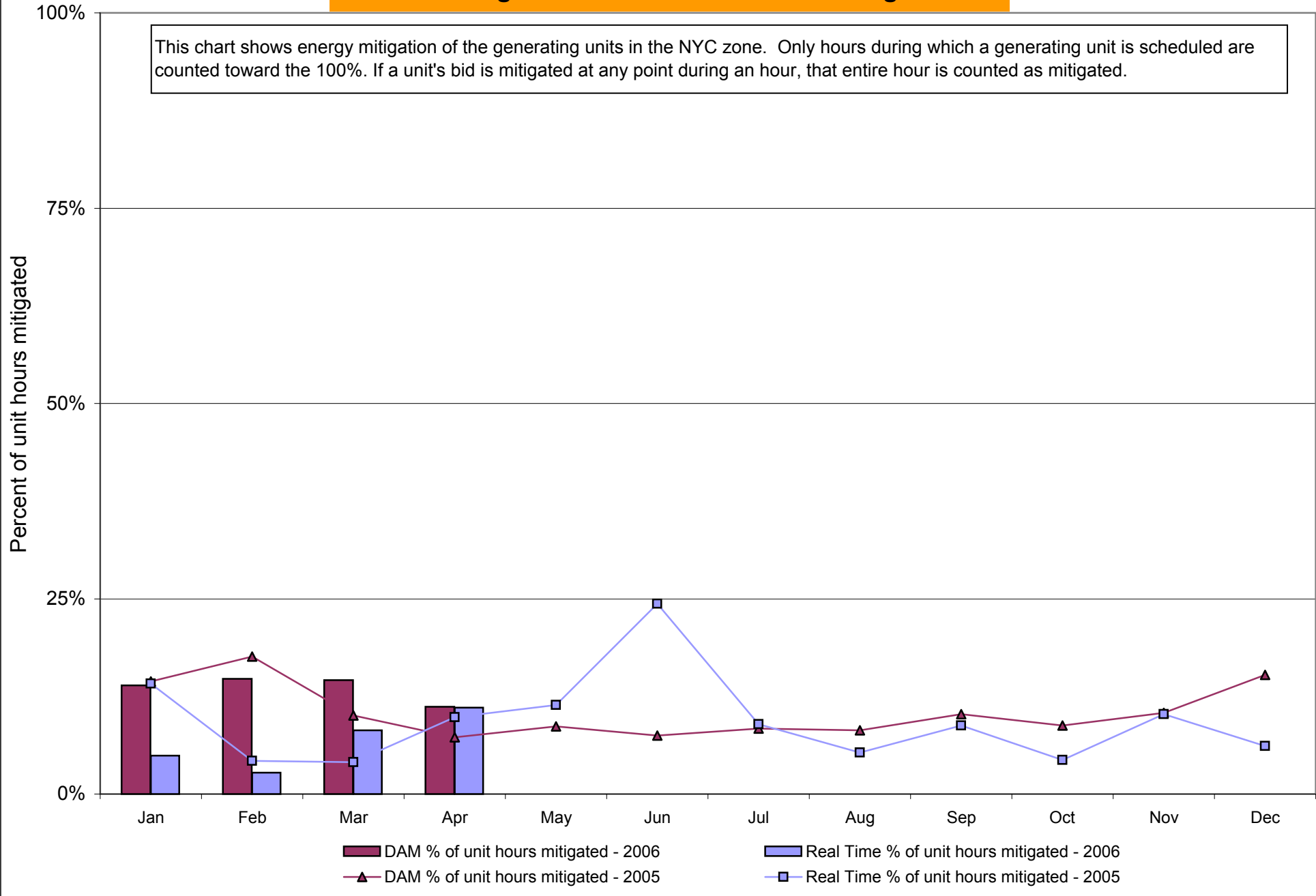
\* Referred to as RTC beginning February 2005. Prior to February 2005 known as BME or Hour Ahead Market (HAM).

\*\* The Real Time Ancillary Market began in February 2005.

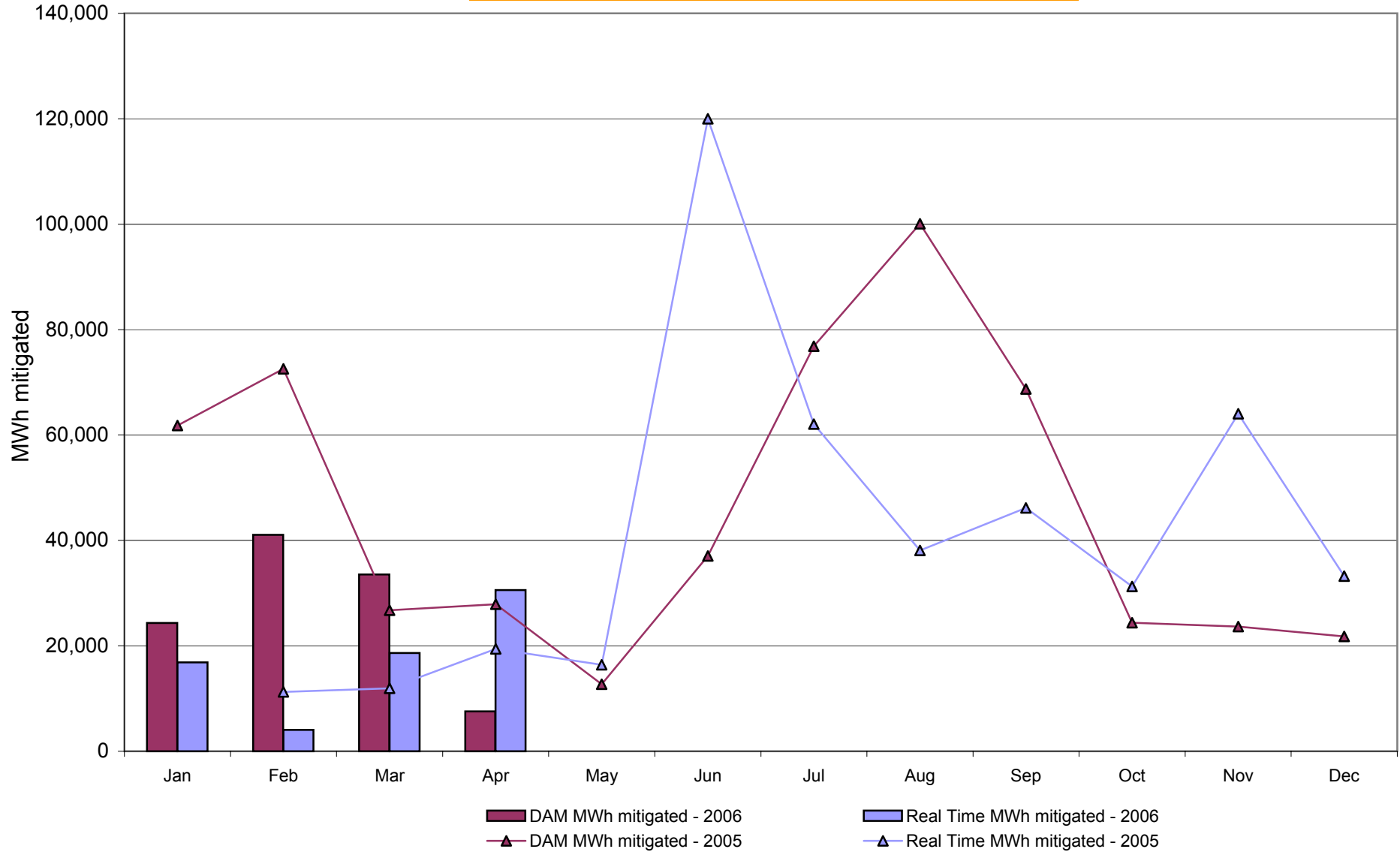
## NYISO In City Energy Mitigation (NYC Zone) 2005-2006

### Percentage of committed unit-hours mitigated

This chart shows energy mitigation of the generating units in the NYC zone. Only hours during which a generating unit is scheduled are counted toward the 100%. If a unit's bid is mitigated at any point during an hour, that entire hour is counted as mitigated.

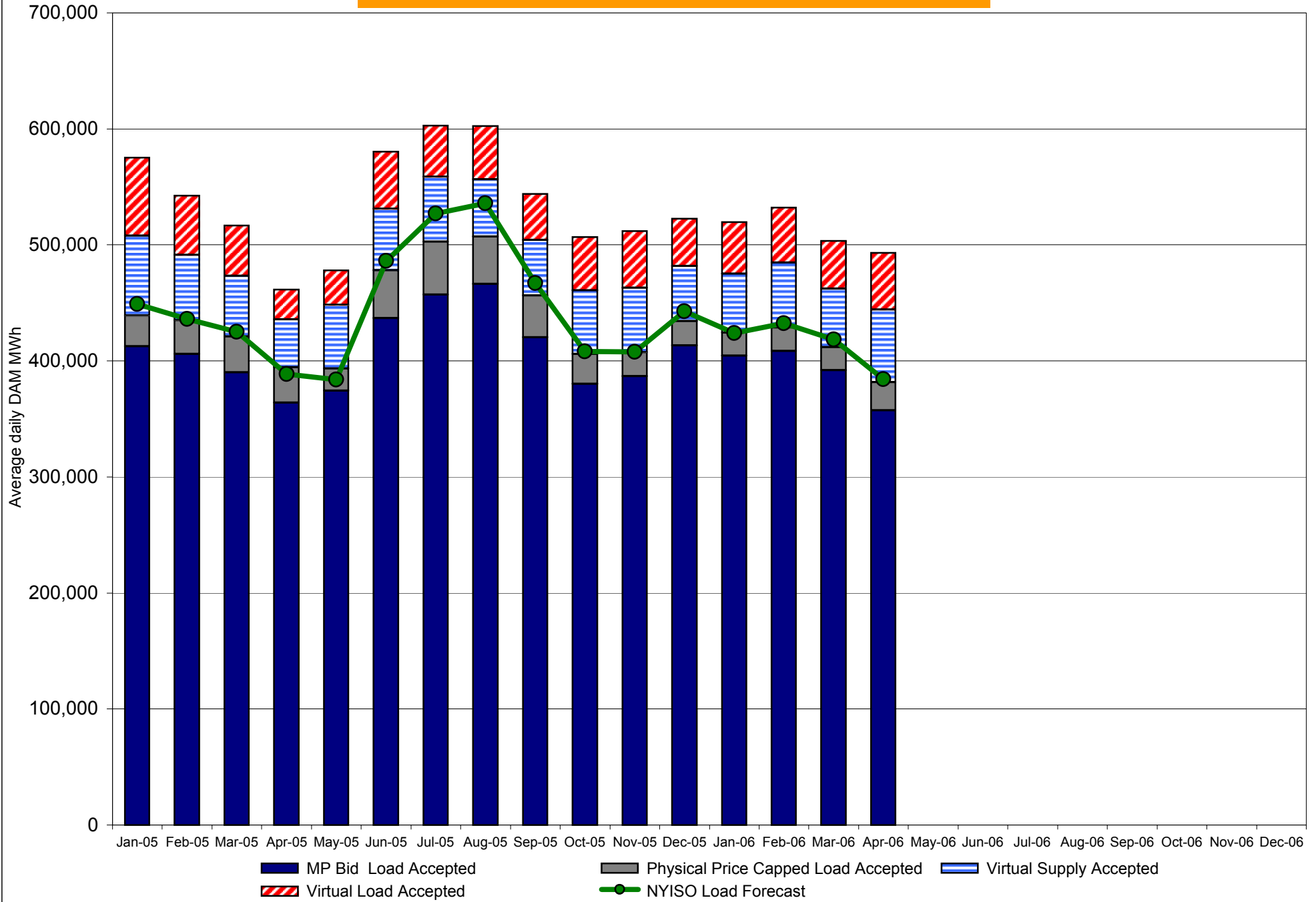


**NYISO In City Energy Mitigation (NYC Zone) 2005-2006**  
**Monthly megawatt hours mitigated**

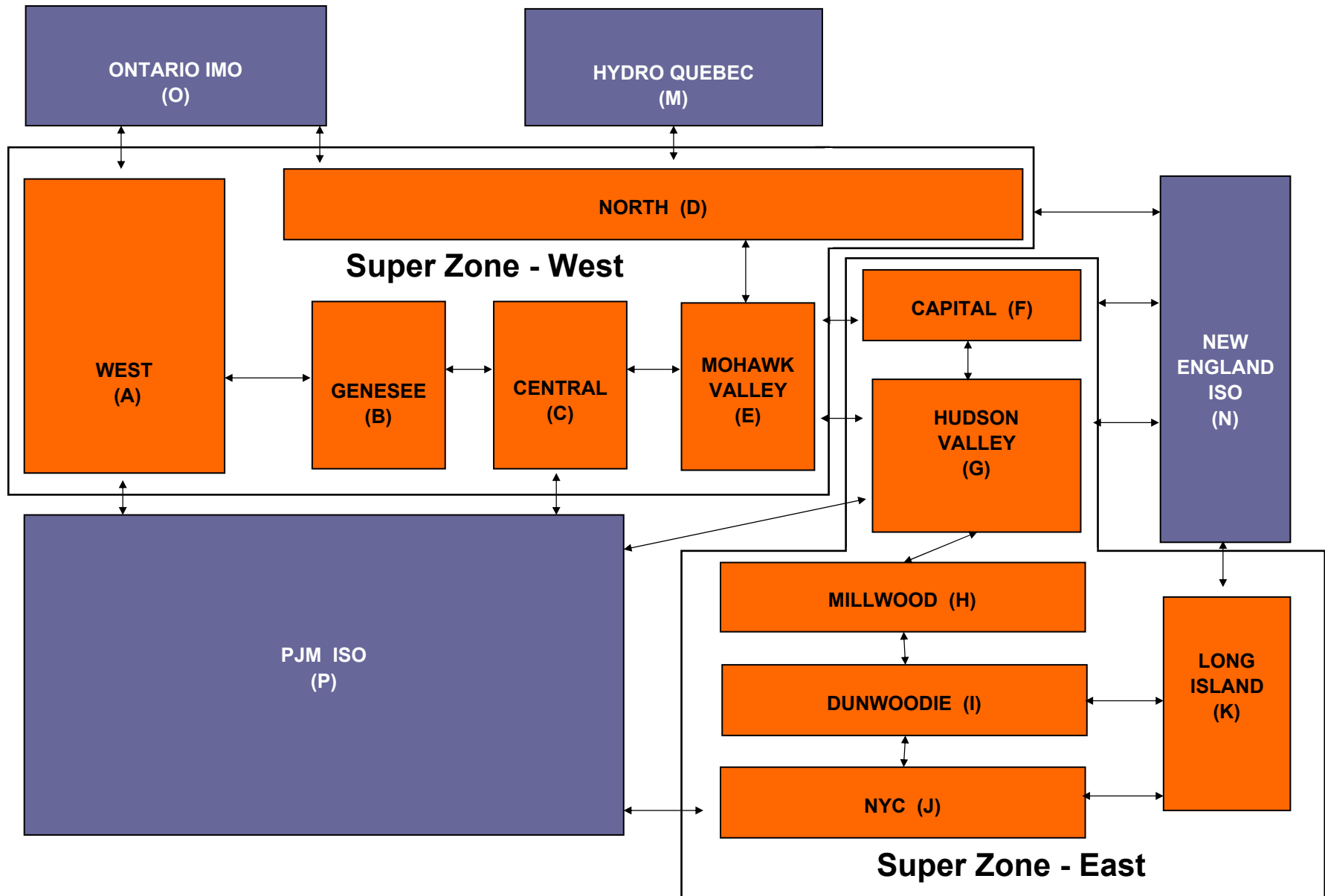


Note: Beginning in November 2005, data for this chart incorrectly doubled the mitigated MWh. The chart now reflects corrected data

# NYISO Average Daily DAM Load Bid Summary



# NYISO LBMP ZONES



**Billing Codes for Chart 4-C**

<b>Chart 4-C Category Name</b>	<b>Billing Code</b>	<b>Billing Category Name</b>
Bid Production Cost Guarantee Balancing	81203	Balancing NYISO Bid Production Cost Guarantee - Internal Units
Bid Production Cost Guarantee Balancing	81204	Balancing NYISO Bid Production Cost Guarantee - External Units
Bid Production Cost Guarantee Balancing	81205	Balancing NYISO Bid Production Cost Guarantee Expenditure due to Curtailed Imports
Bid Production Cost Guarantee Balancing	81208	Balancing NYISO Bid Production Cost Guarantee - Internal Units
Bid Production Cost Guarantee Balancing	81209	Balancing NYISO Bid Production Cost Guarantee - External Units
Bid Production Cost Guarantee Balancing	81213	Balancing NYISO Bid Production Cost Guarantee Expenditure due to Curtailed Imports
Bid Production Cost Guarantee DAM	81201	DAM NYISO Bid Production Cost Guarantee - Internal Units
Bid Production Cost Guarantee DAM	81202	DAM NYISO Bid Production Cost Guarantee - External Units
Bid Production Cost Guarantee DAM	81206	DAM NYISO Bid Production Cost Guarantee - Internal Units
Bid Production Cost Guarantee DAM	81207	DAM NYISO Bid Production Cost Guarantee - External Units
Bid Production Cost Guarantee DAM Virtual	81501	DAM Virtual Bid Production Cost Guarantee
DAM Contract Balancing	81315	DAM Contract Balancing
DAM Contract Balancing	81317	DAM Contract Balancing
Local Reliability Balancing	81002	Balancing Local Reliability Bid Production Cost Guarantee
Local Reliability DAM	81001	DAM Local Reliability Bid Production Cost Guarantee
NYISO Cost of Operations	80901	NYISO Cost Of Operations
NYISO Cost of Operations	80902	NYISO Cost Of Operations
NYISO Cost of Operations	83501	NYISO Cost Of Operations
NYISO Cost of Operations	83502	NYISO Cost Of Operations
Residuals Balancing	81302	Balancing Market Energy Residual
Residuals Balancing	81304	Balancing Market Loss Residual
Residuals Balancing	81305	Balancing Market Congestion Balancing
Residuals Balancing	81306	Emergency Energy Purchases
Residuals Balancing	81307	Emergency Energy Sales
Residuals Balancing	81309	Balancing Market Energy Residual
Residuals Balancing	81311	Balancing Market Loss Residual
Residuals Balancing	81312	Balancing Market Congestion Balancing
Residuals Balancing	81313	Emergency Energy Purchases
Residuals Balancing	81314	Emergency Energy Sales
Residuals DAM	81301	Day Ahead Market Energy Residual
Residuals DAM	81303	Day Ahead Market Loss Residual
Residuals DAM	81308	Day Ahead Market Energy Residual
Residuals DAM	81310	Day Ahead Market Loss Residual