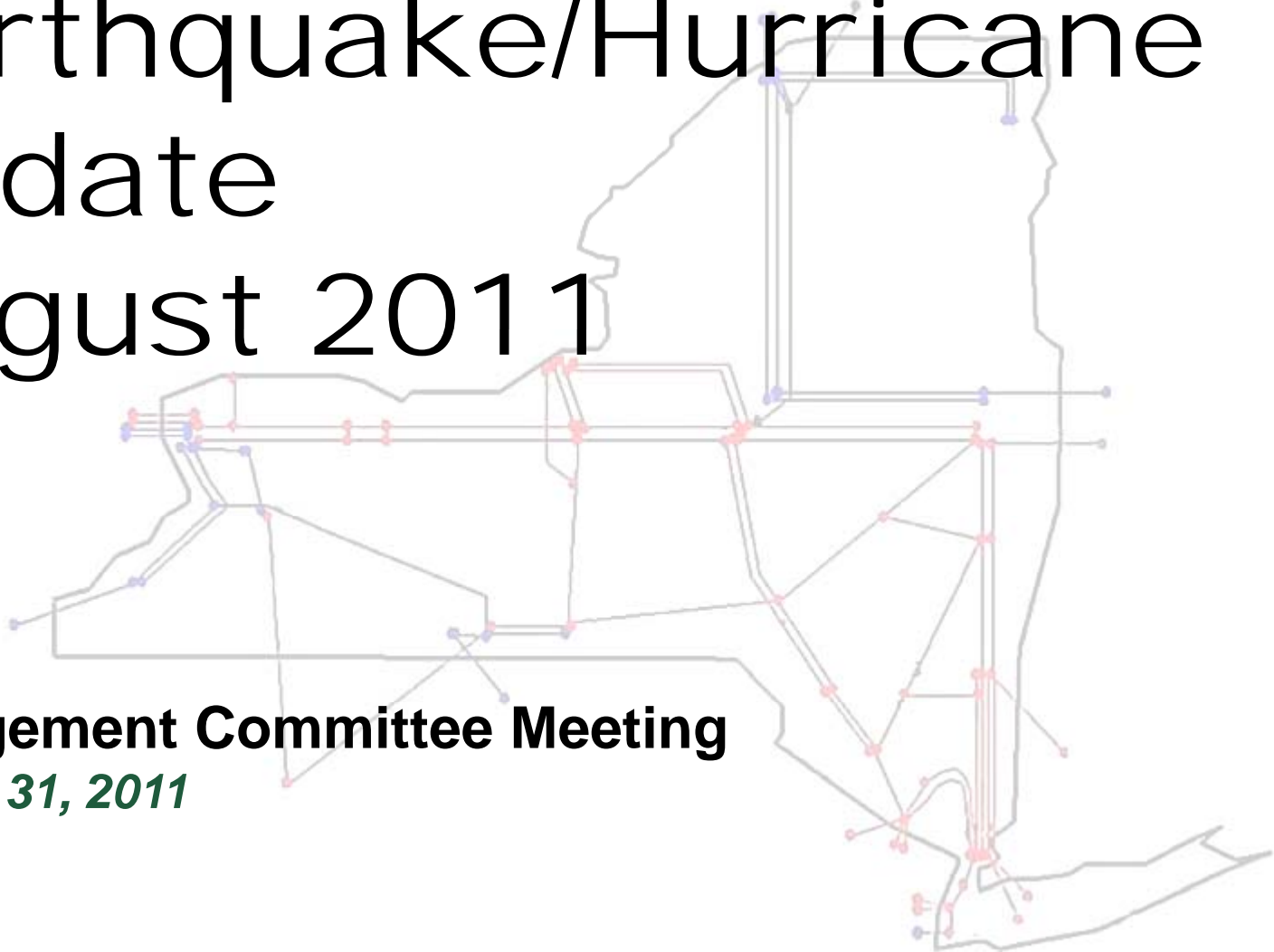


Earthquake/Hurricane Update August 2011

Management Committee Meeting
August 31, 2011



Earthquake – August 23, 2011

- ◆ **On Tuesday, August 23 at approximately 13:51, the east coast experienced an earthquake of 5.9 magnitude centered about 84 miles from Washington DC (www.earthquake.usgs.gov)**
- ◆ **PJM lost over 3,000 MW of generation including nuclear power generation in the Dominion Zone.**
- ◆ **PJM requested Simultaneous Activation of Reserves and the ISO initiated a reserve pickup for its 317 MW share**
- ◆ **The ISO declared the Alert State for actual frequency below 59.95 Hz (actual 59.928 Hz)**

Hurricane Irene - Preparations

- ◆ **All transmission line maintenance outages and generation scheduled outages were cancelled**
- ◆ **The ISO participated on several NPCC conference calls and several NY Transmission Owners conference calls to coordinate preparedness plans**
- ◆ **A Northeast Electric Gas Operating Committee conference call was held to ensure all gas pipeline maintenance outages were cancelled and discuss pipeline asset performance during storm conditions**
- ◆ **The ISO scheduled additional weekend control center staff, alternate control center staff, and other engineering, IT and facilities support staff**
- ◆ **On Friday, August 26 the ISO scheduled an SRE of Roseton 2 for Saturday and Sunday to address potential voltage concerns resulting from storm related demand and generation uncertainty**
- ◆ **The Transmission Owners scheduled a number of DARUs and SREs in preparation to secure local transmission facilities during the storm**

Hurricane Irene – August 27-28, 2011

- ◆ **Saturday, August 27 Hurricane Events**
 - *Coordination conference calls continued with NPCC and Transmission Owners*
 - *At 2042 Con Edison invoked Thunder Storm Alert*

- ◆ **Sunday, August 28 Hurricane Events**
 - *Coordination conference calls continued with NPCC and Transmission Owners*
 - *At 05:05 the ISO declared the Alert State for severe weather*
 - *New York customer outages reached approximately 954,000 customers as reported on the Transmission Owner web sites*
 - *Storm related transmission outages included:*
 - *Three 345 kV: W89 Pleasantville-Dunwoodie, 68 Bowline-Ladentown, 67 Ladentown-Haverstraw*
 - *One 230 kV: E205W Rotterdam-Bear Swamp*
 - *Multiple 138 kV and 115 kV transmission outages*
 - *Storm related generation outages” less than 1000 MW with majority due to transmission*
 - *At 13:25 Con Edison cancelled Thunder Storm Alert and at 14:15 the ISO terminated the Alert State for severe weather.*
 - *The ISO did not need to activate Demand Response*