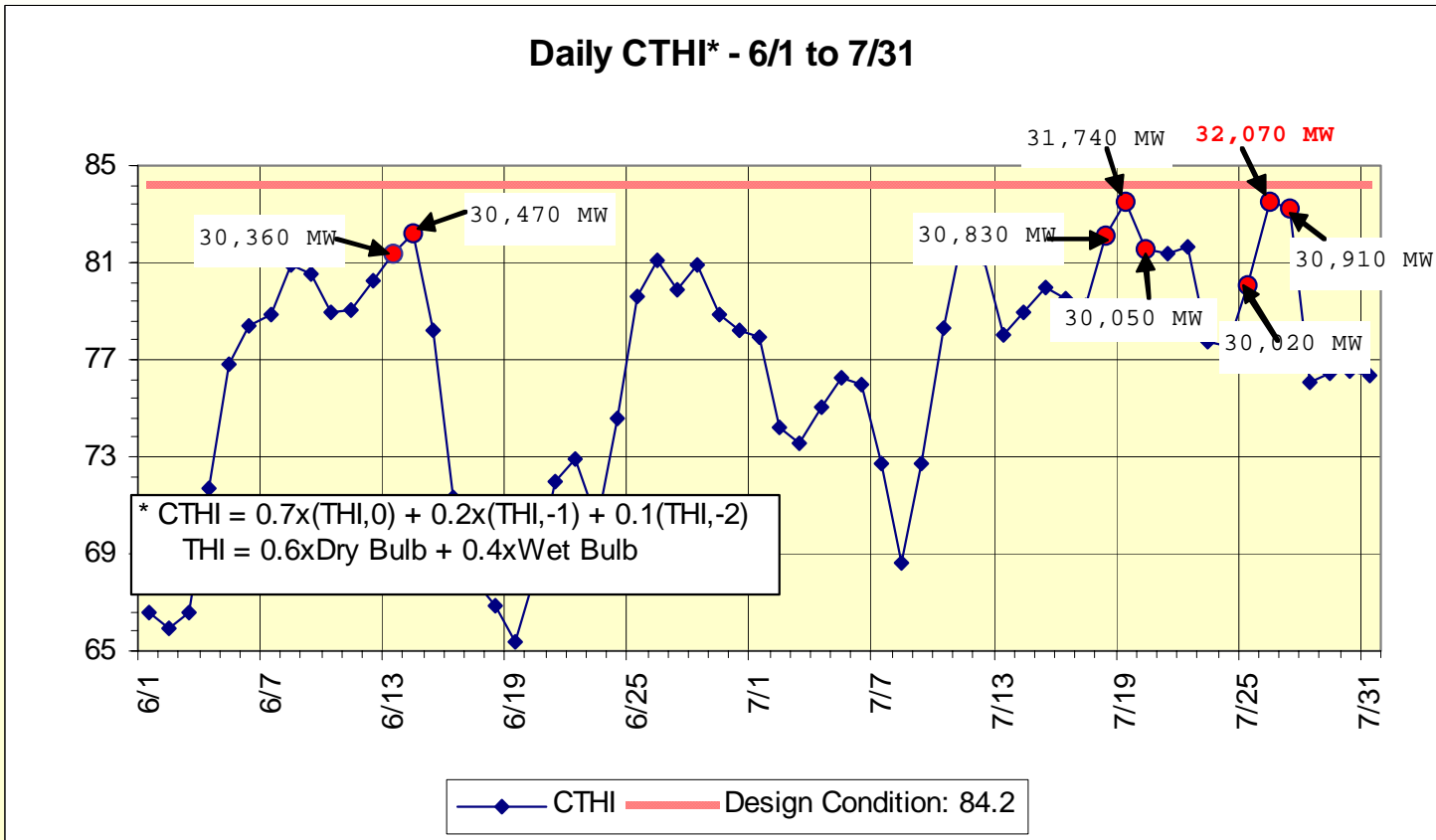
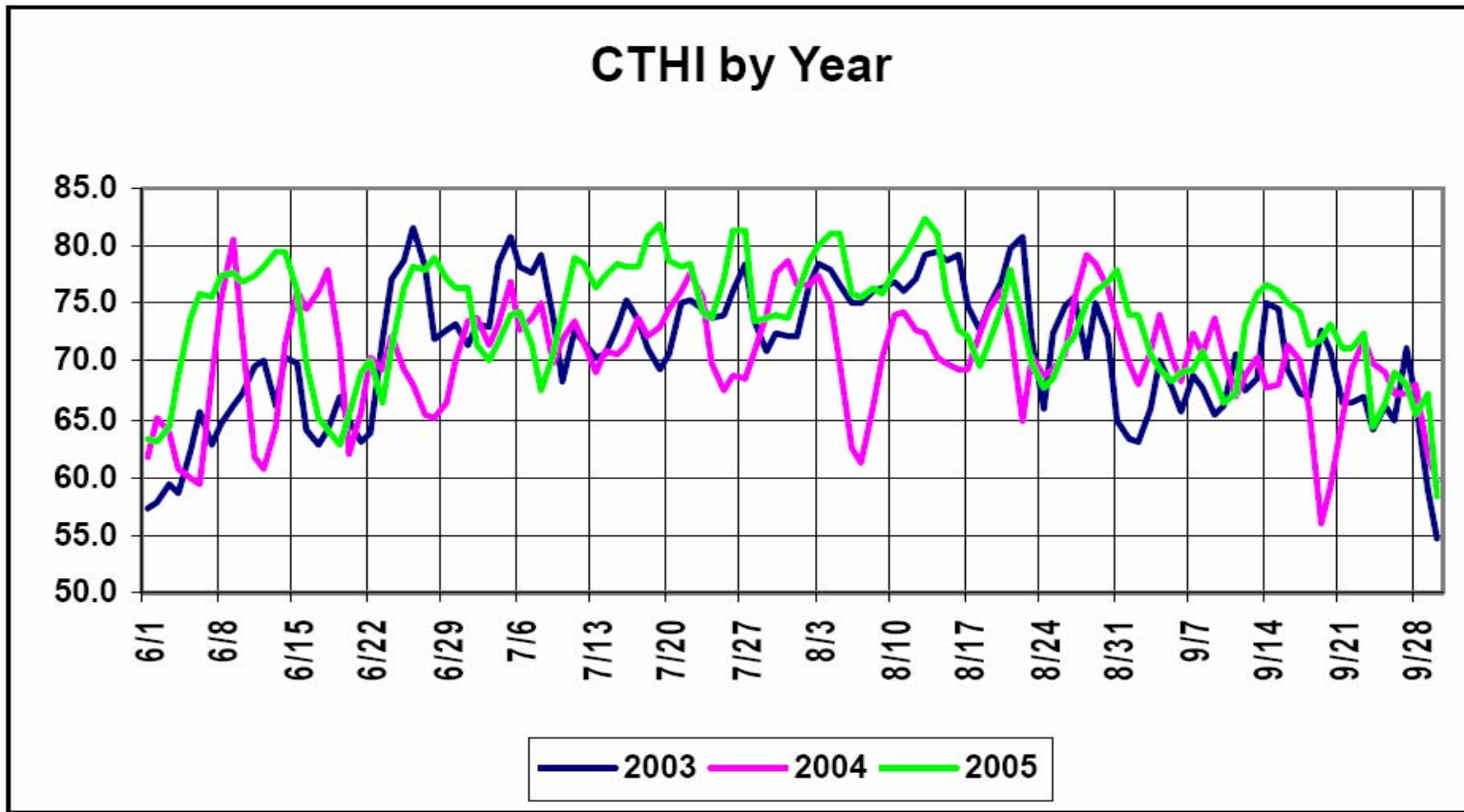


2005 Summer Loads & Weather

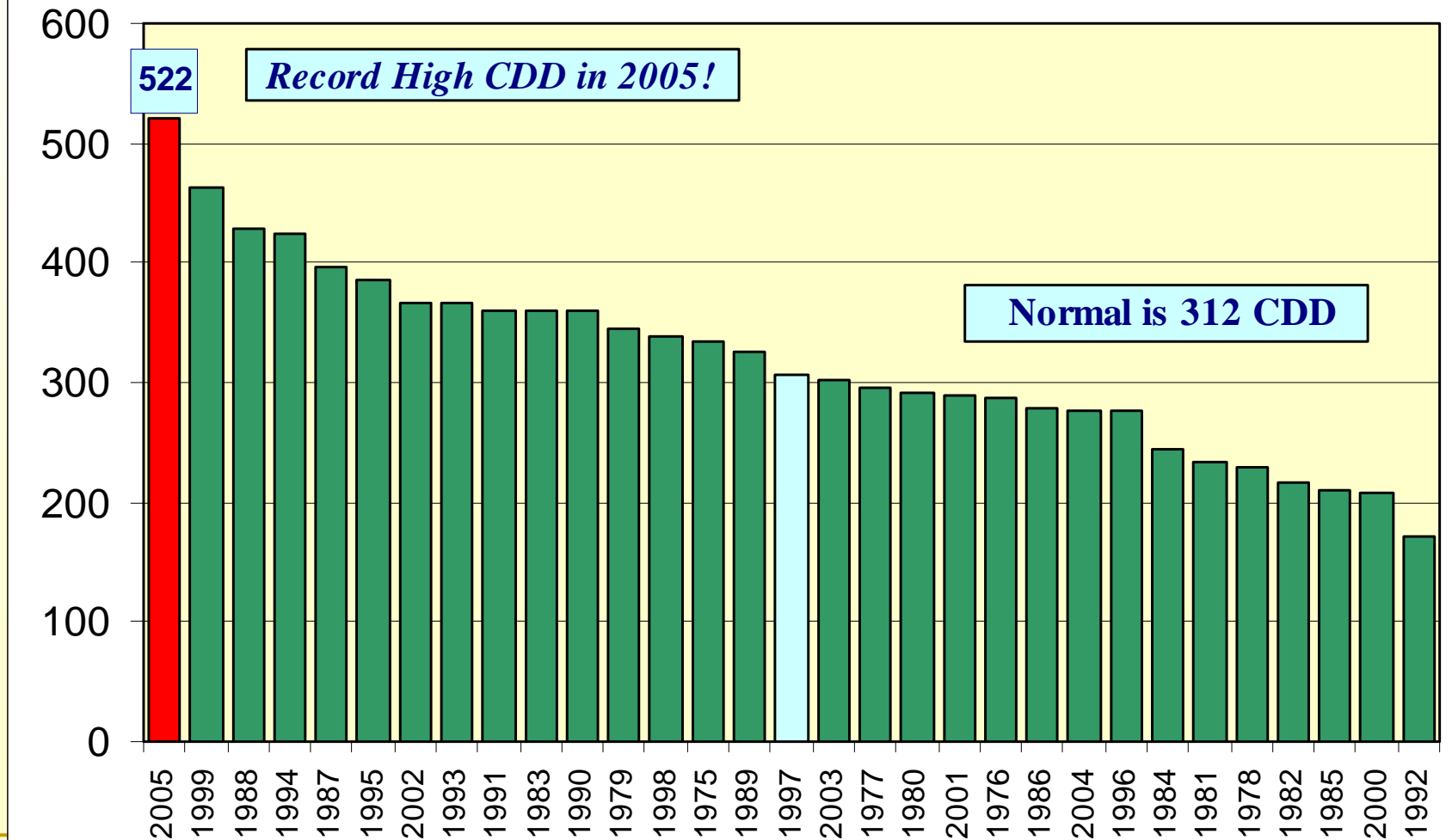


2005 Summer Loads & Weather



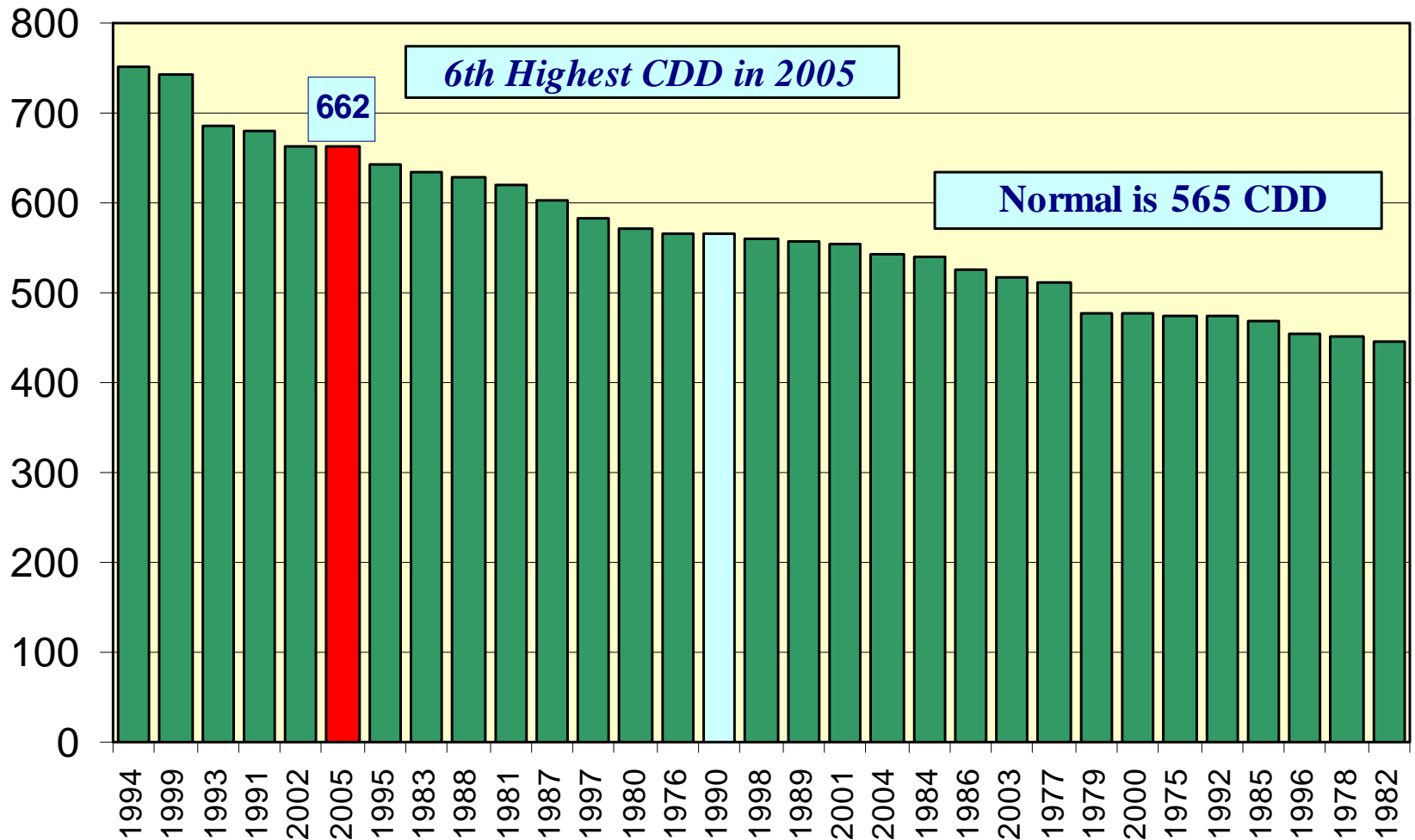
Albany – June & July Cooling Degree Days

Albany June & July CDD, 1975 to 2005

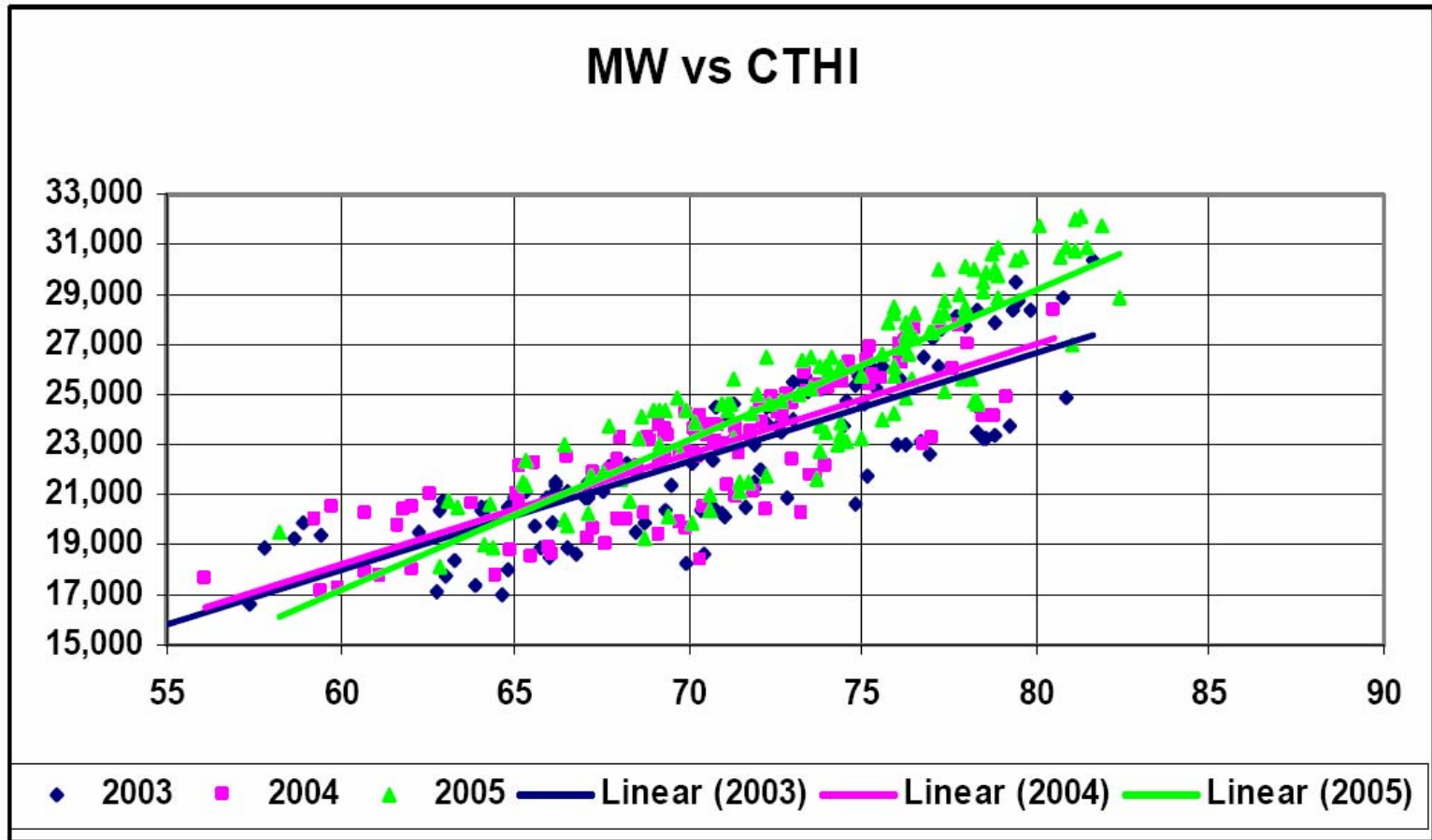


New York City – June & July Cooling Degree Days

NYC June & July CDD, 1975 to 2005



2005 Summer Loads & Weather

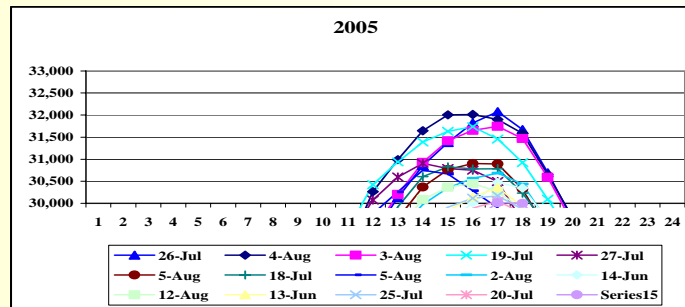
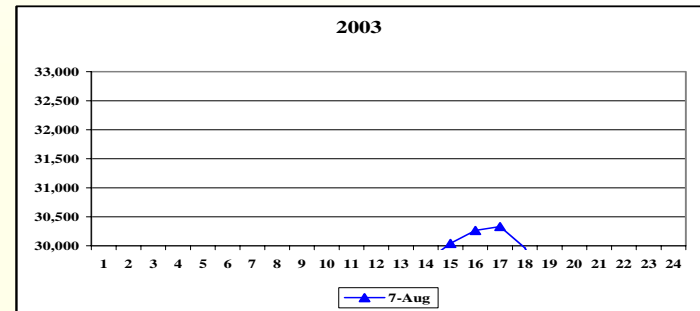
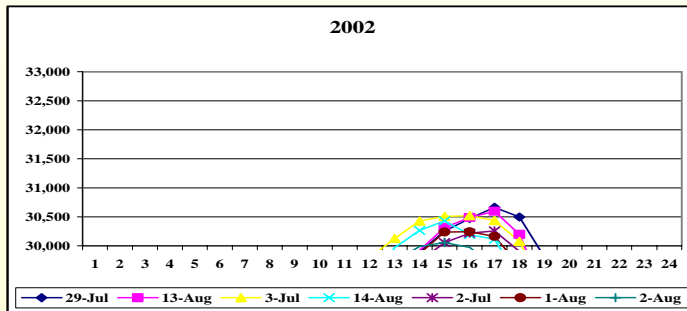
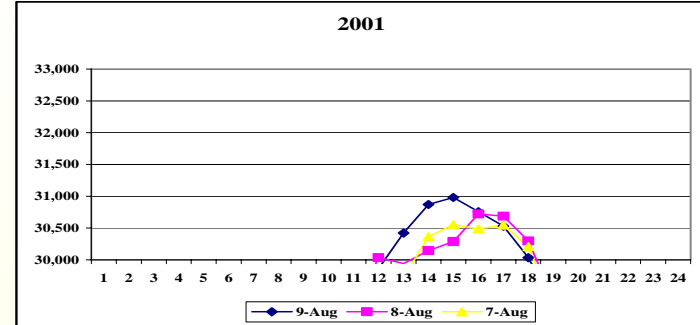
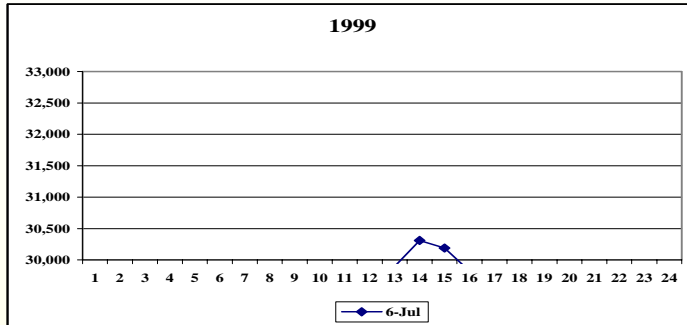


2005 Summer Loads & Weather

	Load \geq 30,000 MW	
	Days	Hours
1999	1	2
2000	0	0
2001	3	17
2002	7	25
2003	1	3
2004	0	0
2005	15	68

30,000 MW Day Dates	Daily Peak	Hours \geq 30,000 MW
06-Jul-99	30,311	2
09-Aug-01	30,982	6
08-Aug-01	30,721	6
07-Aug-01	30,552	5
29-Jul-02	30,664	4
13-Aug-02	30,596	4
03-Jul-02	30,520	6
14-Aug-02	30,432	4
02-Jul-02	30,258	3
01-Aug-02	30,241	3
02-Aug-02	30,057	1
26-Jun-03	30,333	3
26-Jul-05	32,075	7
04-Aug-05	32,016	8
03-Aug-05	31,746	7
19-Jul-05	31,738	8
27-Jul-05	30,907	6
11-Aug-05	30,904	5
18-Jul-05	30,826	5
05-Aug-05	30,752	4
02-Aug-05	30,682	4
14-Jun-05	30,469	3
12-Aug-05	30,443	4
13-Jun-05	30,359	2
10-Aug-05	30,174	2
20-Jul-05	30,048	1
25-Jul-05	30,016	2

2005 Summer Loads & Weather



2005 Summer Loads & Weather

	<u>2005 Actual Peak Load (MW)</u>	<u>Date</u>	<u>Hour Ended</u>	<u>Forecasted Peak Load</u>
NYCA	32,075	26-Jul	5:00 PM	31,960
Zone J	11,162	27-Jul	5:00 PM	11,298
Zone K	5,295	5-Aug	3:00 PM	5,231
	Pending verification by metering authorities			