

NYISO Decision Support System Business Objects Universe Design Proposal

Load Serving Entities

This document contains snapshots/pictures of the proposed Business Objects universe design for the Load Serving Entities Universe. The DSS Team is requesting input on the following from Market

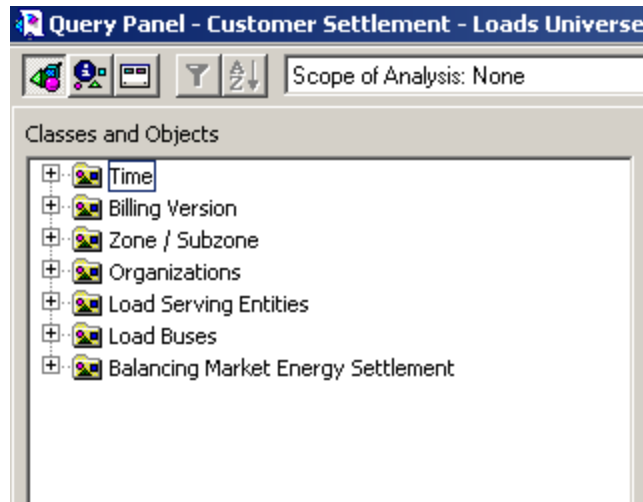
Participants:

- Are the classes and sub-classes organized clearly?
- Can you quickly and easily find the data elements you need?
- Could you build your most common queries / reports?
- Are there any general comments regarding the proposed design?

The Load Serving Entities Universe presented here is the same universe presented on previous Task Force conference calls and at both DSS Pilots. The proposed design is a draft proposal, and the final design is still in-progress.

When analyzing the universe designs, keep in the mind the custom reports/queries that you would build the most. The classes should make query/report building quicker and easier.

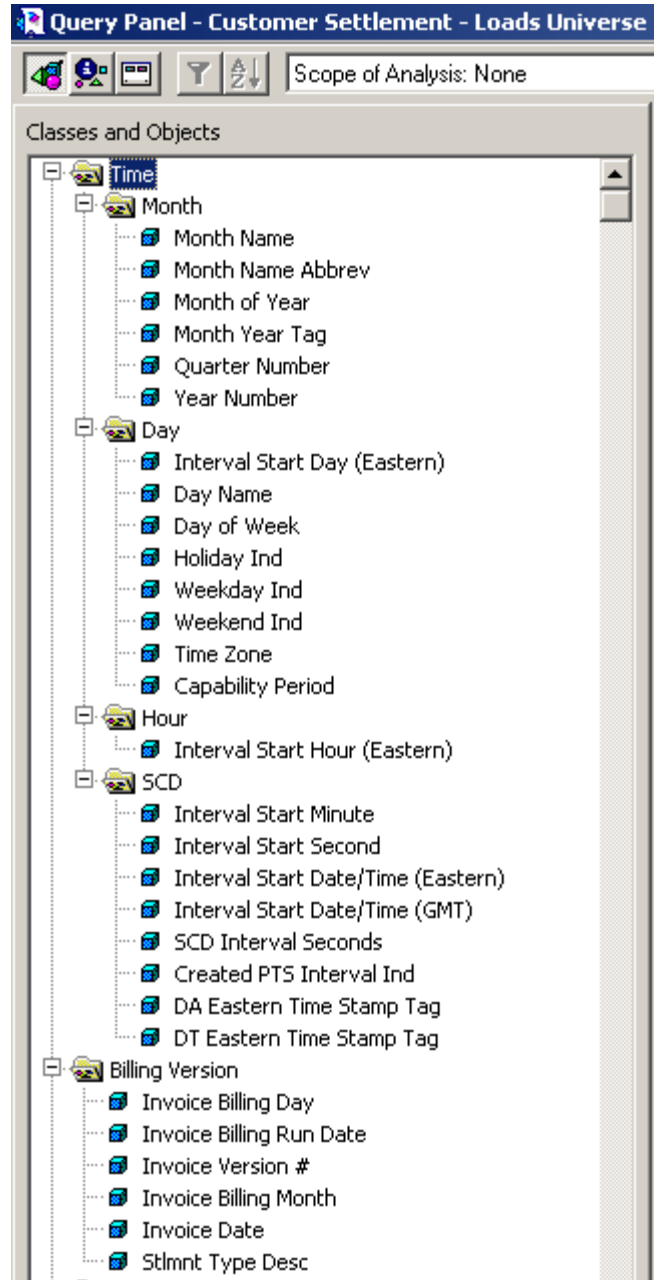
Top Level Classes



- Each top level class can be opened (similar to MS Windows folders) showing sub-classes and data elements
- See following slides for sub-classes and contained data elements.

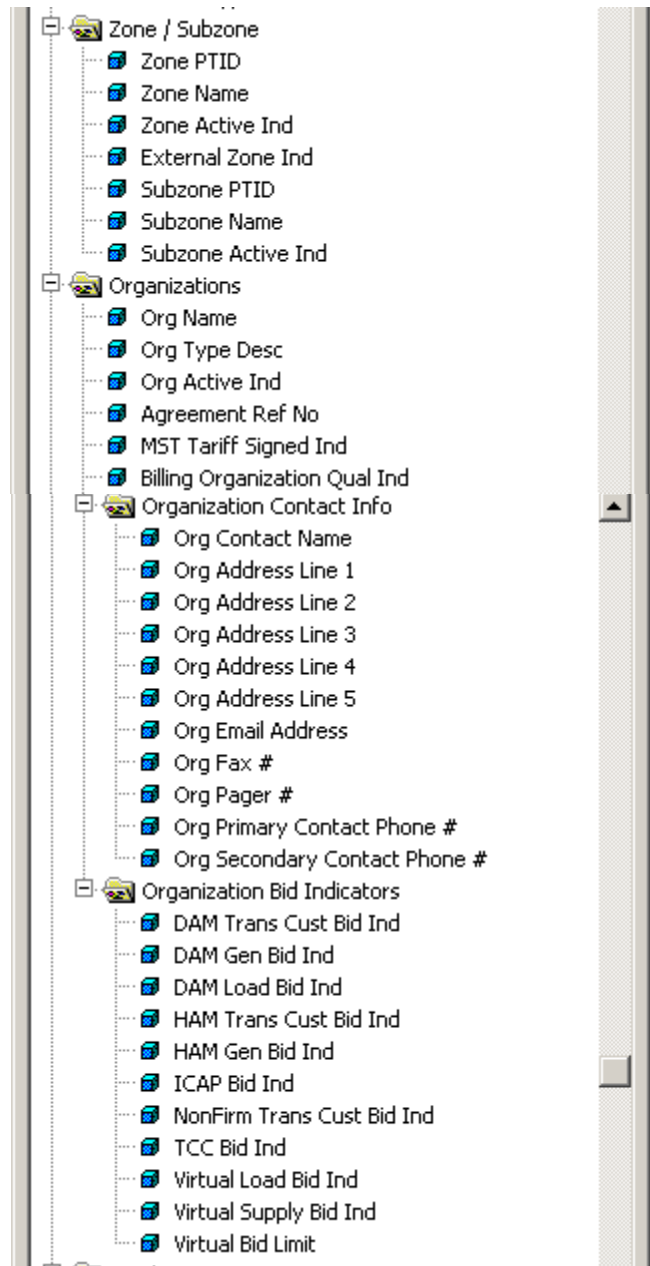
Breakdown of Top Level Classes

- Time
- Billing Version



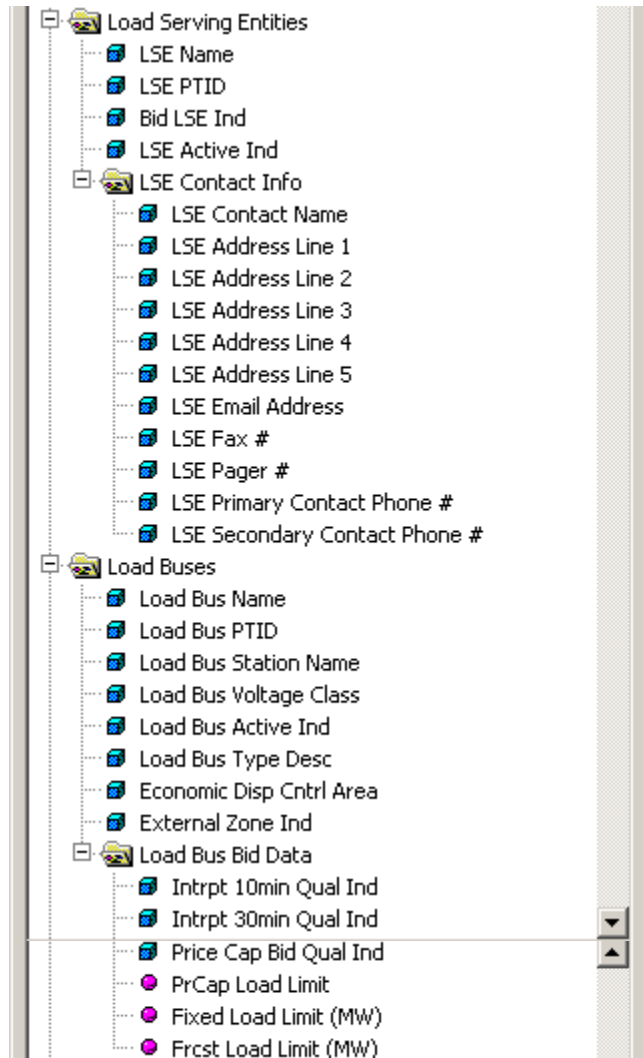
Breakdown of Top Level Classes

- Zone / Subzone
- Organization



Breakdown of Top Level Classes

- Load Serving Entities
- Load Buses



Breakdown of Top Level Classes

- Balancing Market Energy Settlement

- [-] Balancing Market Energy Settlement
 - [-] Invoice Version #
 - [-] Daily Balance Market Settlement
 - [-] Interval Start Day (Eastern)
 - [-] Daily Settlement Results
 - Day Balanc Mkt Energy Stlmt (\$)
 - Day Balanc Mkt Loss Stlmt (\$)
 - Day Balanc Mkt Cong Stlmt (\$)
 - Day Total Balancing Mkt Stlmt (\$)
 - [-] Daily Other Related Info
 - Day Balancing Mkt Load (MWh)
 - Day Total Load (MWh)
 - Day DAM Sched Load (MW)
 - Day Billing Meter (MWh)
 - Day Adj Meter (MWh)
 - [-] Hourly Balance Market Settlement
 - [-] Interval Start Day (Eastern)
 - [-] Interval Start Hour (Eastern)
 - [-] Hourly Settlement Results
 - Hr Balanc Mkt Energy Stlmt (\$)
 - Hr Balanc Mkt Cong Stlmt (\$)
 - Hr Balanc Mkt Loss Stlmt (\$)
 - Hr Total Balancing Mkt Stlmt (\$)
 - [-] Hourly Other Related Info
 - Hr Balancing Mkt Load (MWh)
 - Hr Total Load (MWh)
 - Hr DAM Sched Load (MW)
 - Hr Total Subzone Load (MWh)
 - Hr DAM Subzone Tot Frst Load (MW)
 - Hr DAM Load Bid -Fix Load (MW)
 - Hr DAM Load Bid -Frst Load (MW)
 - Hr DAM Load Bid PrCap -Prc1 (\$/MWh)
 - Hr DAM Load Bid PrCap -Prc 2 (\$/MW)
 - Hr DAM Load Bid PrCap -Prc 3 (\$/MW)
 - Hr DAM Load Bid PrCap -Load 1 (MW)
 - Hr DAM Load Bid PrCap -Load 2 (MW)
 - Hr DAM Load Bid PrCap -Load 3 (MW)

- [-] Hr DAM Inter Load Bid Type
- [-] Hr DAM Inter Load Bid PrCap -(\$/MW)
- [-] Hr DAM Inter Load Bid PrCap-Ld (MW)
- [-] Hr DAM Inter Load Bid Fix-Prc(\$/MW)
- [-] Hr DAM Inter Load Bid Fix-Load (MW)
- [-] Hr DAM Sched PrCap Load (MW)
- [-] Hr DAM Sched Inter PrCap Load (MW)
- [-] Hr DAM Sched Inter Fix Load (MW)
- [-] Hr Billing Meter (MWh)
- [-] Hr Adj Meter (MWh)
- [-] Hr Tran Sch Energy Fixed Block (MW)
- [-] SCD Balance Market Settlement
 - [-] Interval Start Day (Eastern)
 - [-] Interval Start Hour (Eastern)
 - [-] Interval Start Date/Time (Eastern)
 - [-] SCD Settlement Results
 - SCD Balancing Mkt Energy Stlmt (\$)
 - SCD Balancing Mkt Loss Stlmt (\$)
 - SCD Balancing Mkt Cong Stlmt (\$)
 - SCD Total Balancing Mkt Stlmt (\$)
 - [-] SCD Billing Determinants
 - SCD RT Energy Price (\$/MW)
 - SCD RT Loss Price (\$/MW)
 - SCD RT Cong Price (\$/MW)
 - SCD RT Total Price (\$/MW)
 - SCD Balancing Mkt Load (MWh)
 - SCD Total Load (MW)
 - SCD Trans Unadjusted Schd (MW)
 - SCD Fixed Correction Ratio
 - SCD Interval Seconds
 - SCD MST Tariff Signed Ind
 - SCD Tot SubZ Load (MW)
 - SCD Hr DAM Load Bid-Frst Load (MW)
 - SCD Hr DAM Sched Load (MW)
 - SCD Hr DAM SZ Tot Frst Load MW
 - [-] SCD Other Related Info
 - SCD Trans Schd (MW)
 - SCD Trans Schd (MWh)
 - SCD Total Load (MWh)
 - SCD Balancing Mkt Load (MW)