

Operations Performance Metrics Monthly Report



August 2012 Report

Operations & Reliability Department New York Independent System Operator

Prepared by NYISO Operations Analysis and Services, based on settlements initial invoice data collected on or before September 11, 2012.

Table of Contents

- ◆ **Highlights**
 - *Operations Performance*

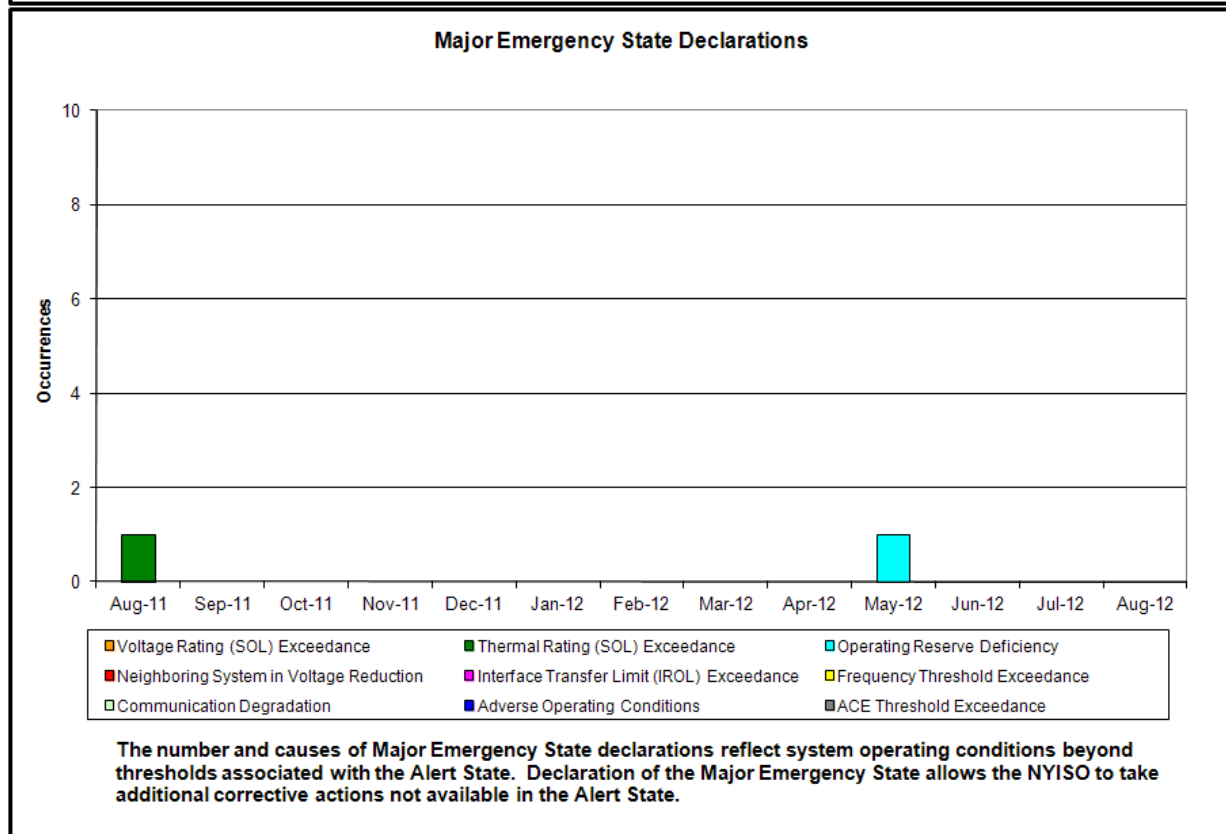
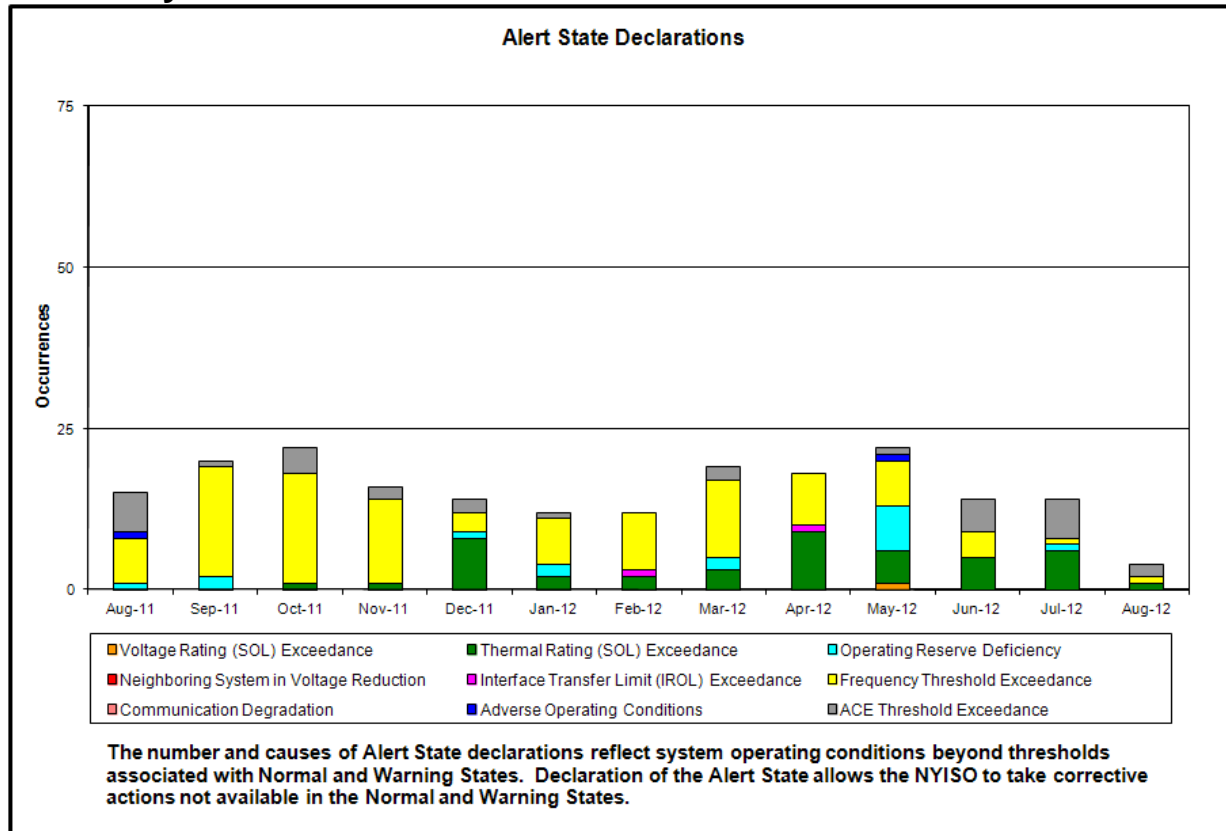
- ◆ **Reliability Performance Metrics**
 - *Alert State Declarations*
 - *Major Emergency State Declarations*
 - *IROL Exceedance Times*
 - *Balancing Area Control Performance*
 - *Reserve Activations*
 - *Disturbance Recovery Times*
 - *Load Forecasting Performance*
 - *Wind Forecasting Performance*
 - *Lake Erie Circulation and ISO Schedules*

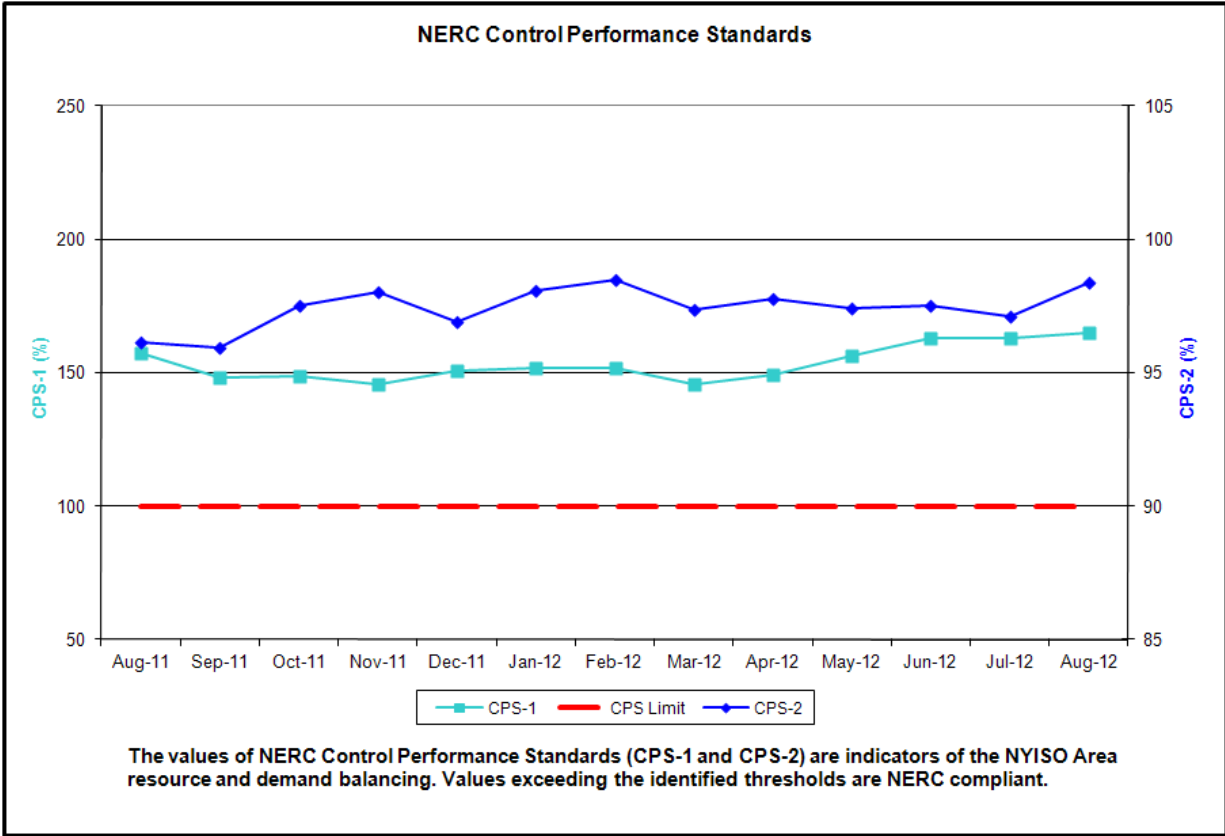
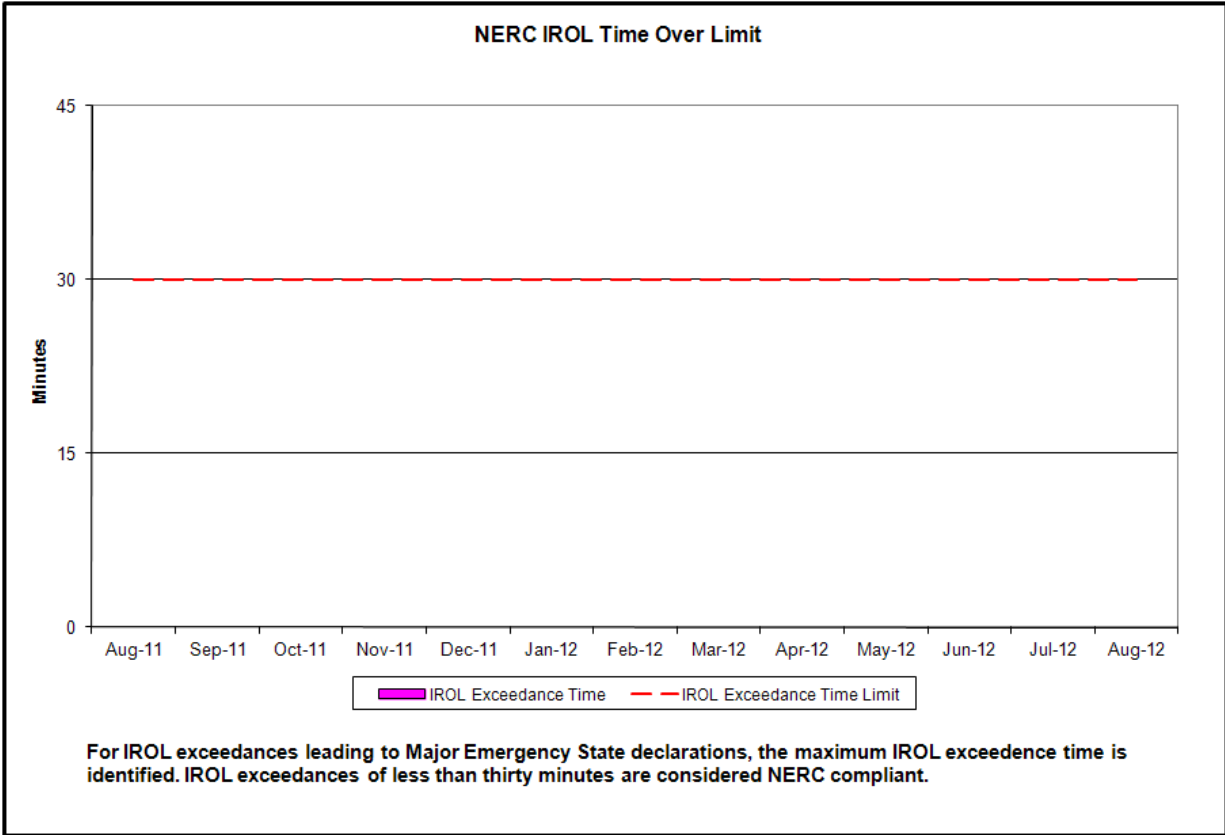
- ◆ **Market Performance Metrics**
 - *RTM Congestion Residuals Monthly Trend*
 - *RTM Congestion Residuals Daily Costs*
 - *RTM Congestion Residuals Event Summary*
 - *RTM Congestion Residuals Cost Categories*
 - *DAM Congestion Residuals Monthly Trend*
 - *DAM Congestion Residuals Daily Costs*
 - *DAM Congestion Residuals Cost Categories*
 - *NYCA Unit Uplift Components Monthly Trend*
 - *NYCA Unit Uplift Components Daily Costs*
 - *Local Reliability Costs Monthly Trend & Commitment Hours*
 - *TCC Monthly Clearing Price with DAM Congestion*
 - *ICAP Spot Market Clearing Price*
 - *UCAP Awards*

August 2012 Operations Performance Highlights

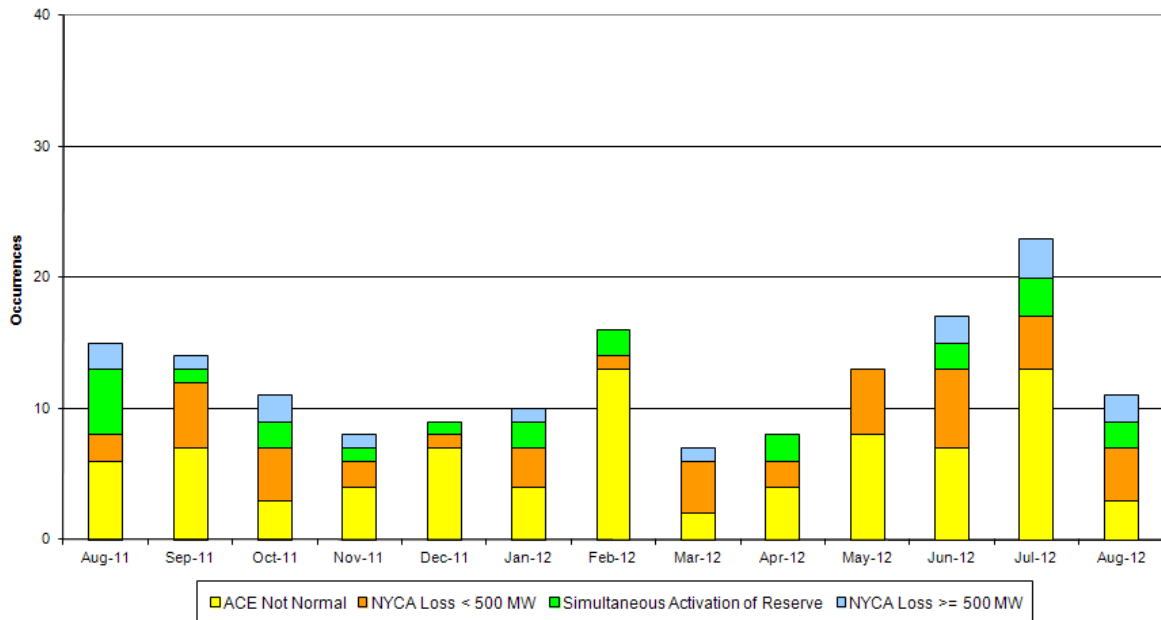
- Peak load of 30,989 MW occurred on 8/3/2012 HB 15
- All-time summer capability period peak load of 33,939 MW occurred on 8/2/2006 HB13
- 35 hours of Thunder Storm Alerts were declared
- No hours of NERC TLR level 3 curtailments

Reliability Performance Metrics



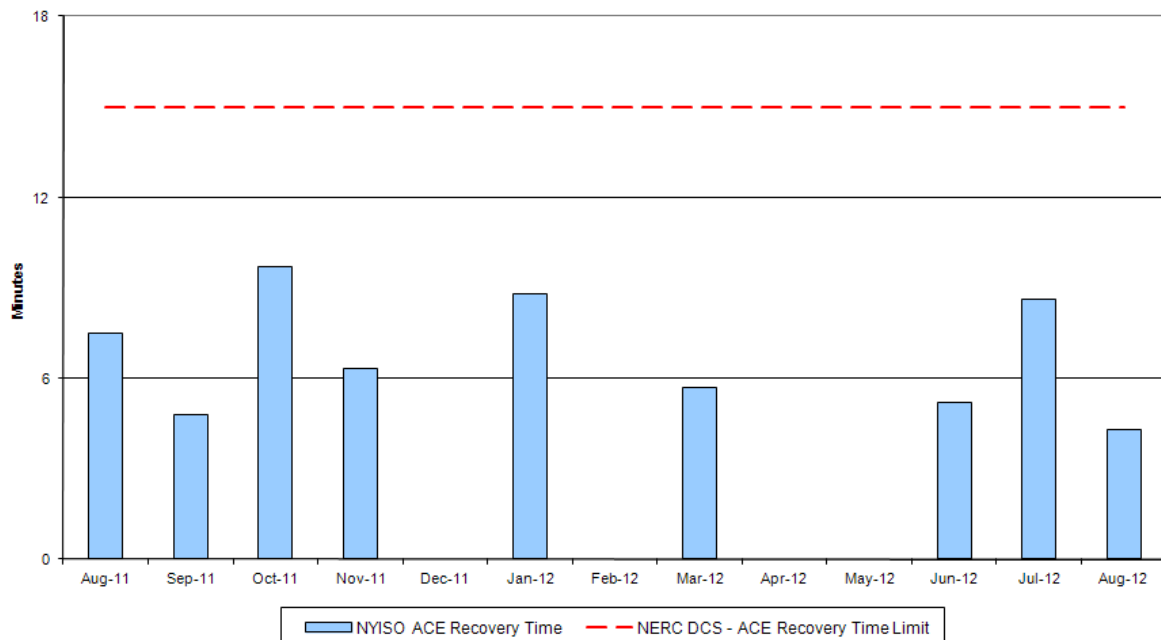


Reserve Activations

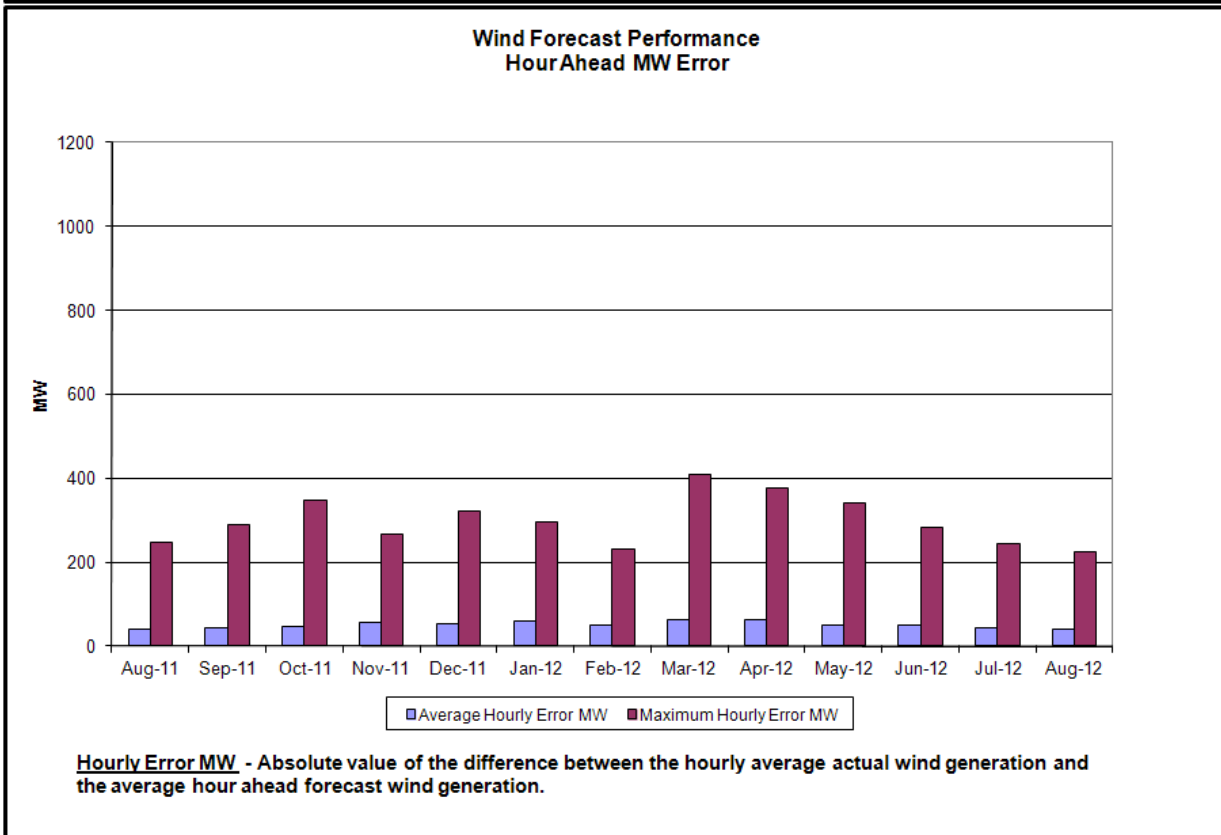
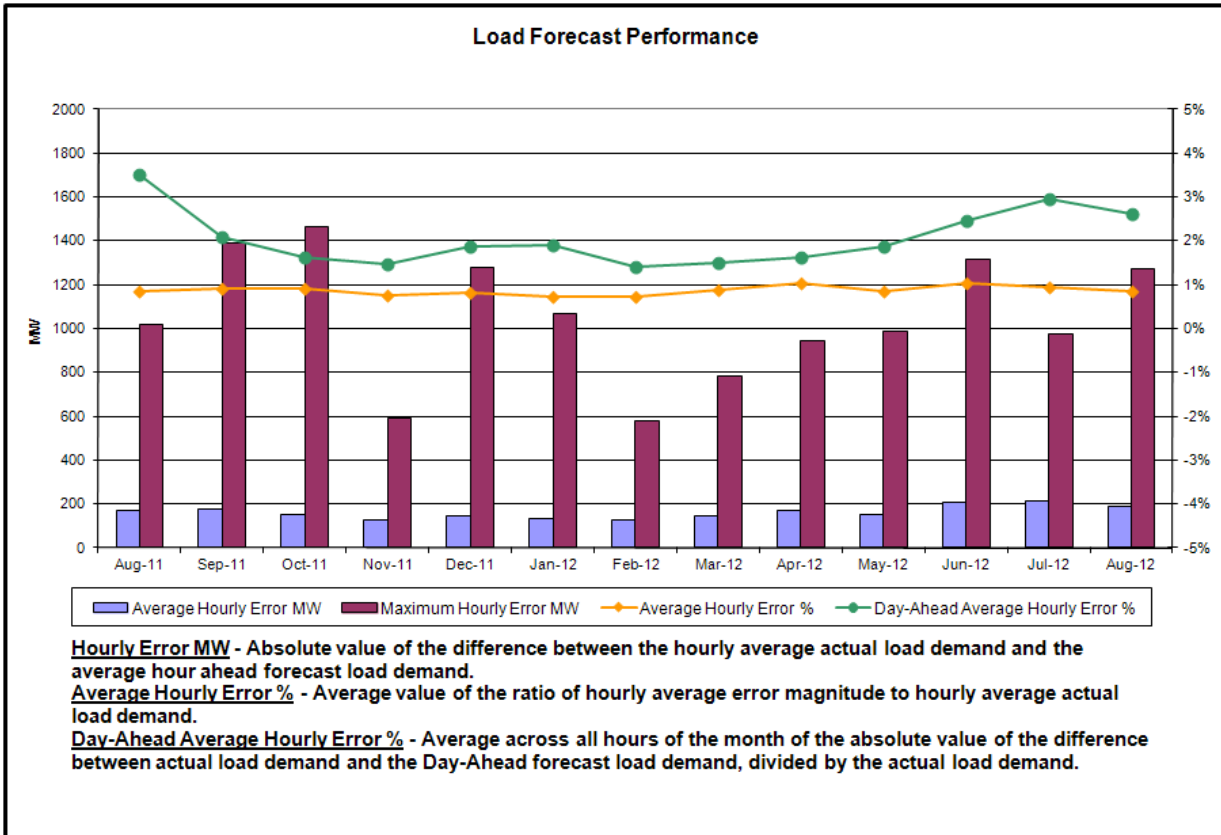


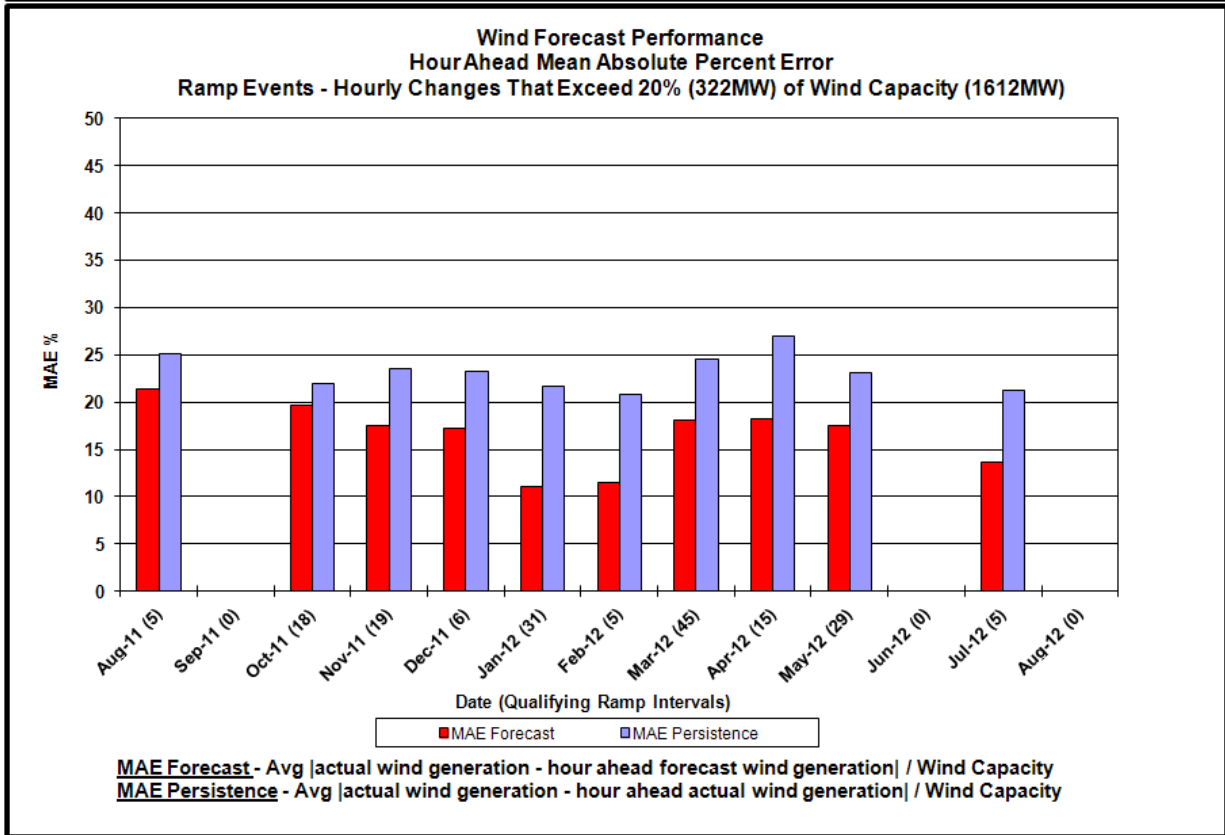
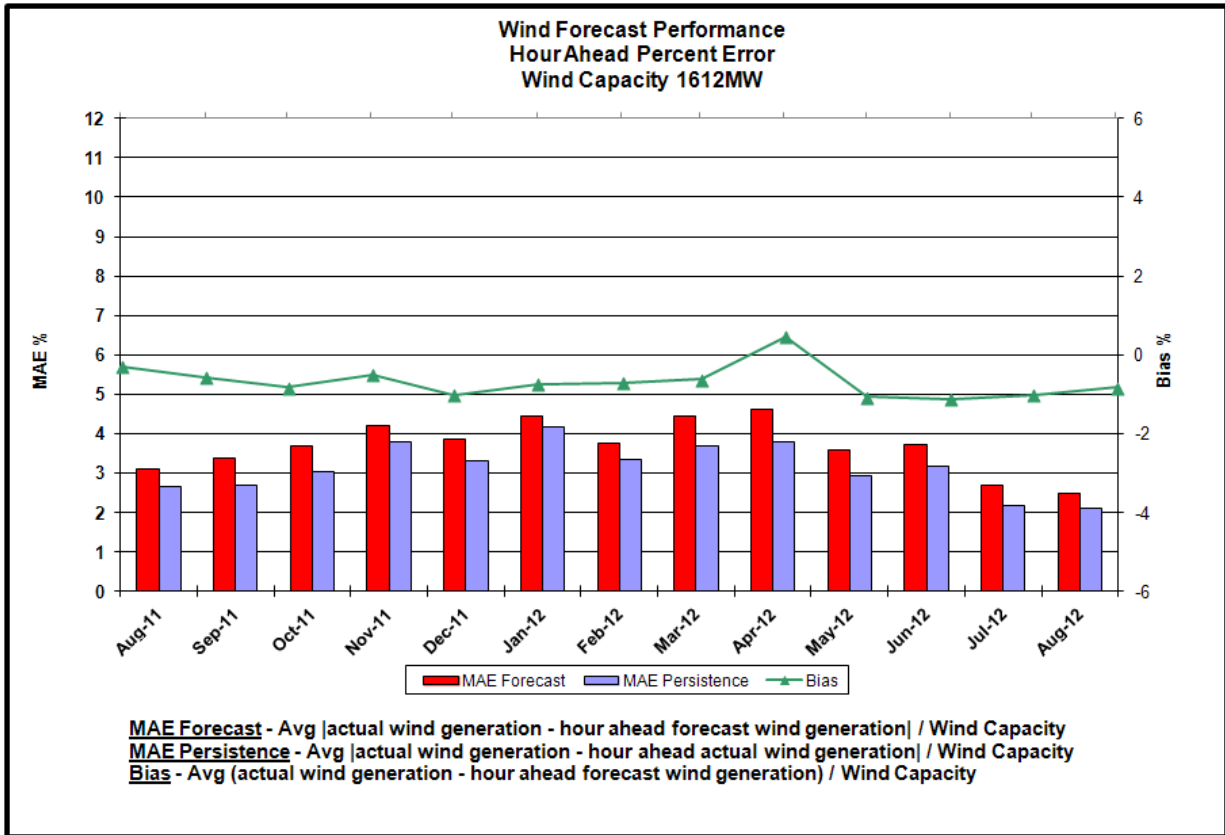
NYISO Reserve Activations are indicators of the need to respond to unexpected operational conditions within the NYISO Area or to assist a neighboring Area (Shared Activation of Reserves) by activating an immediate resource and demand balancing operation.

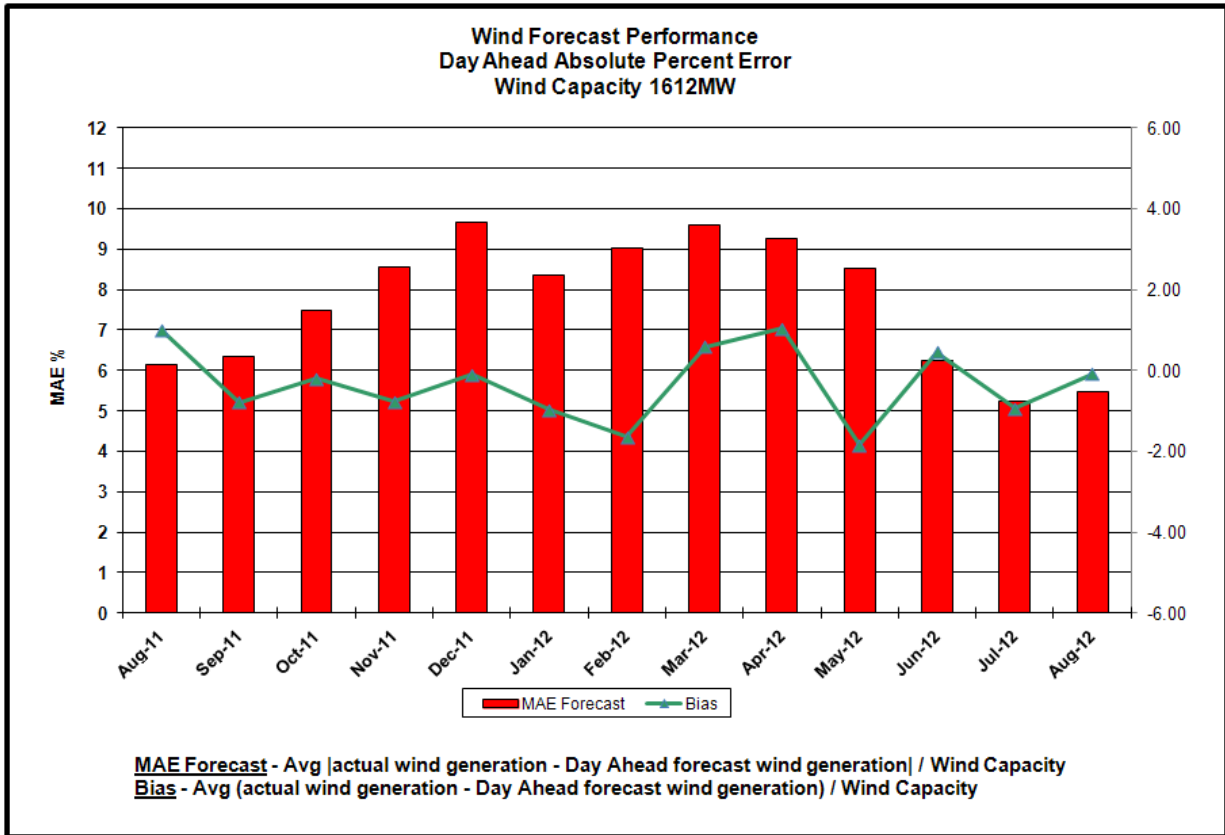
DCS Event Time to ACE Recovery

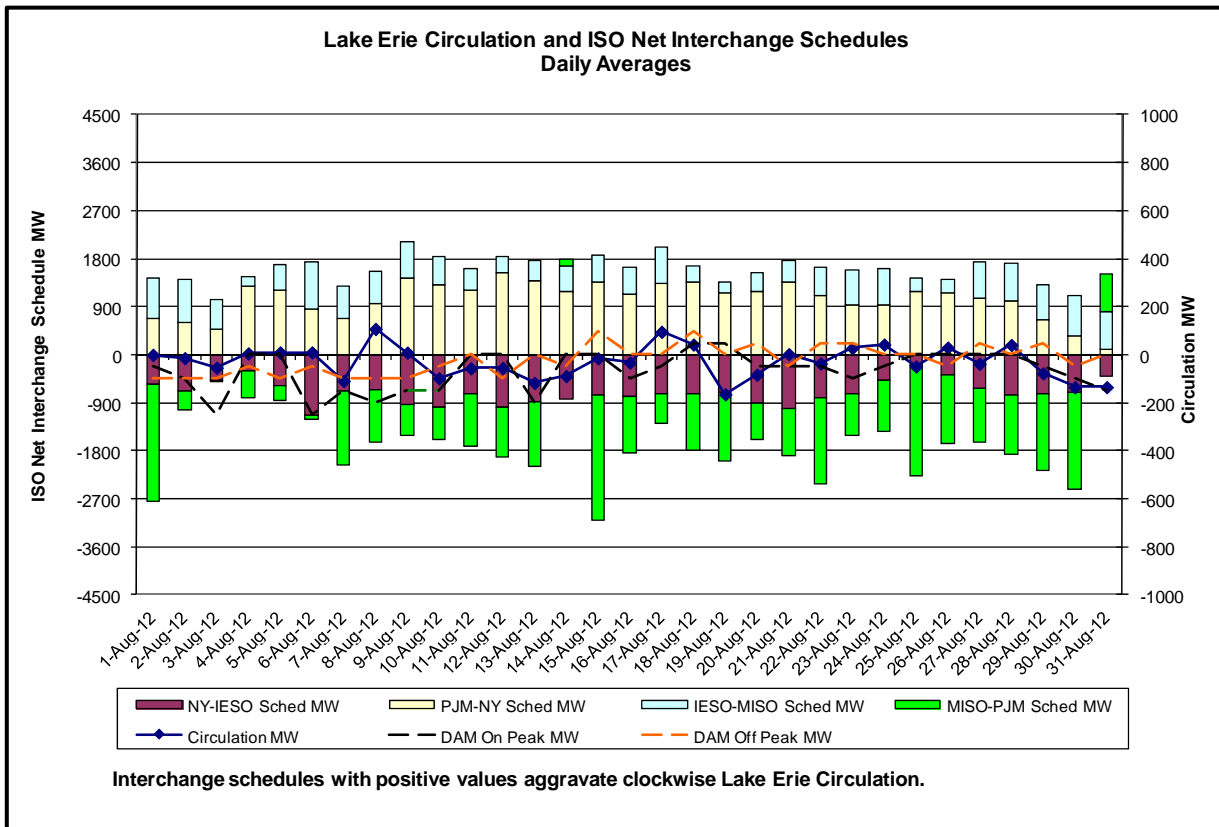
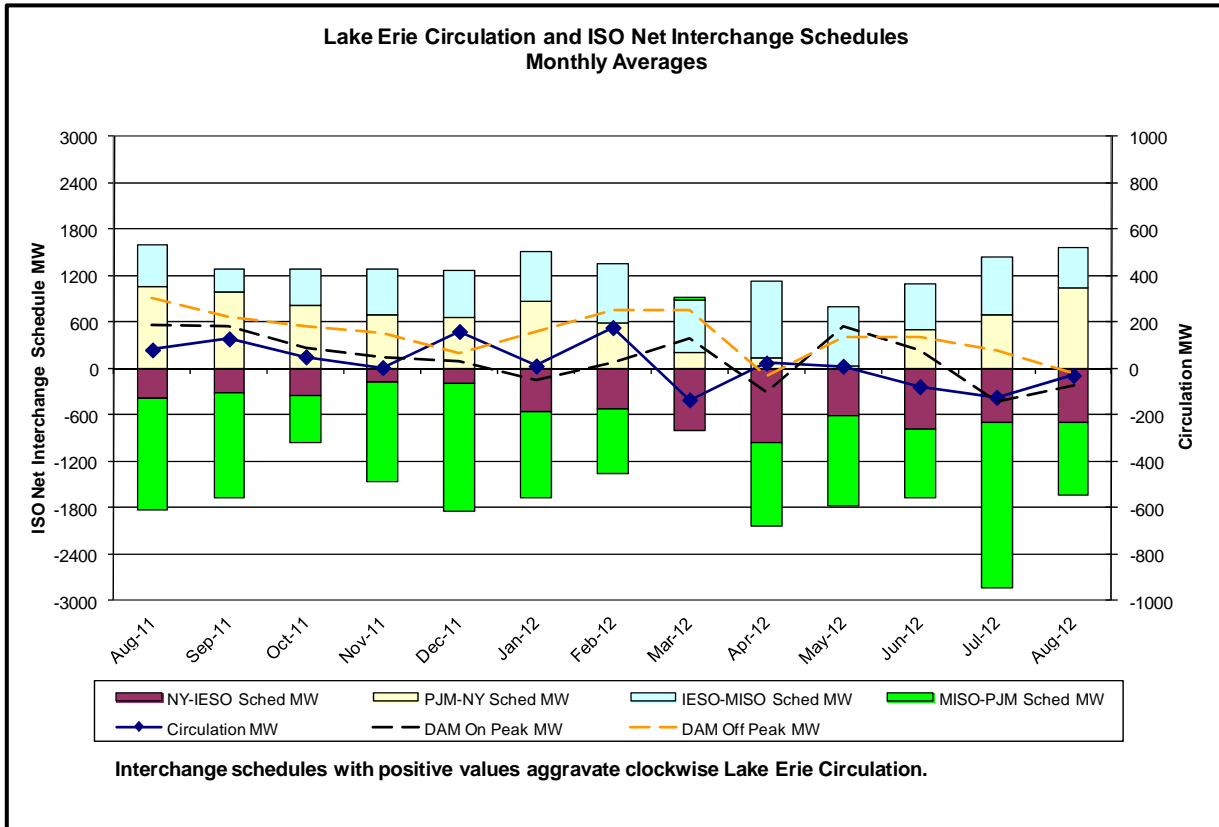


For NYISO initiated Reportable Disturbances, the maximum ACE recovery time is identified. Recovery times of less than 15 minutes are considered NERC compliant.

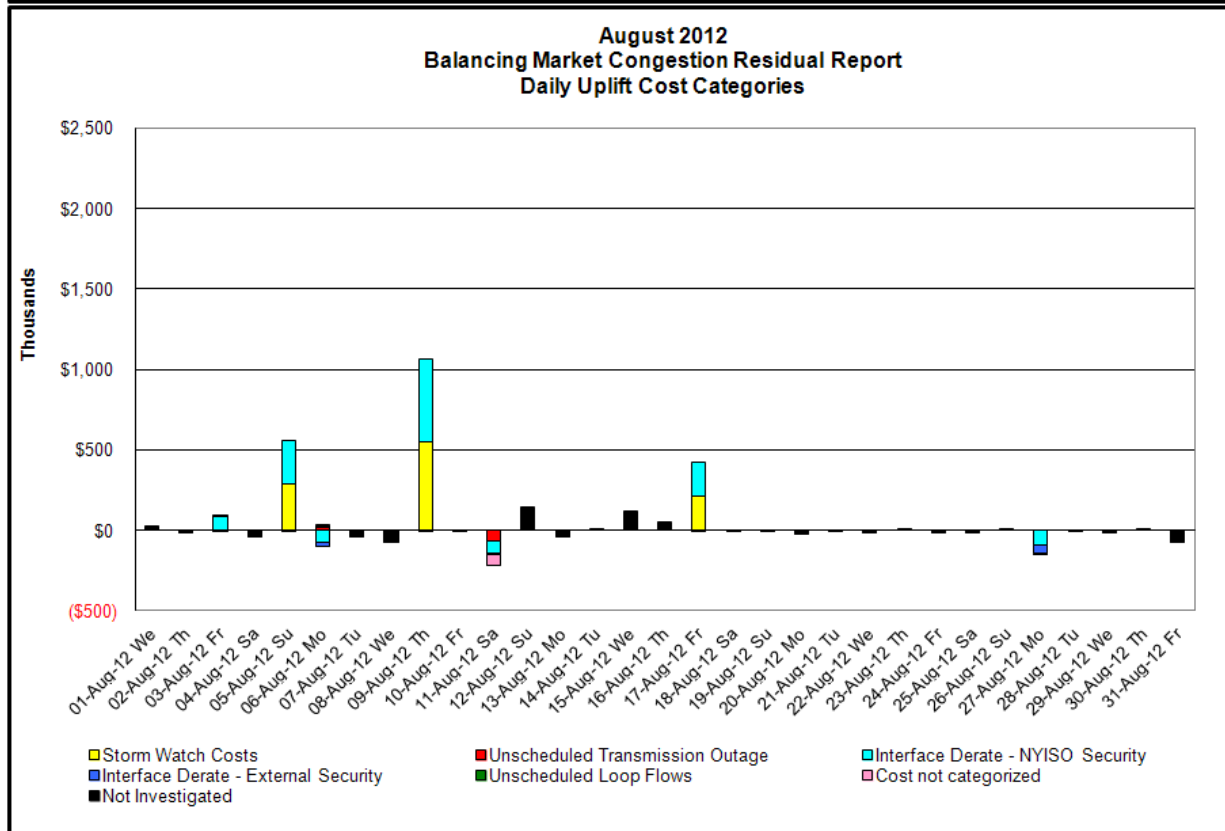
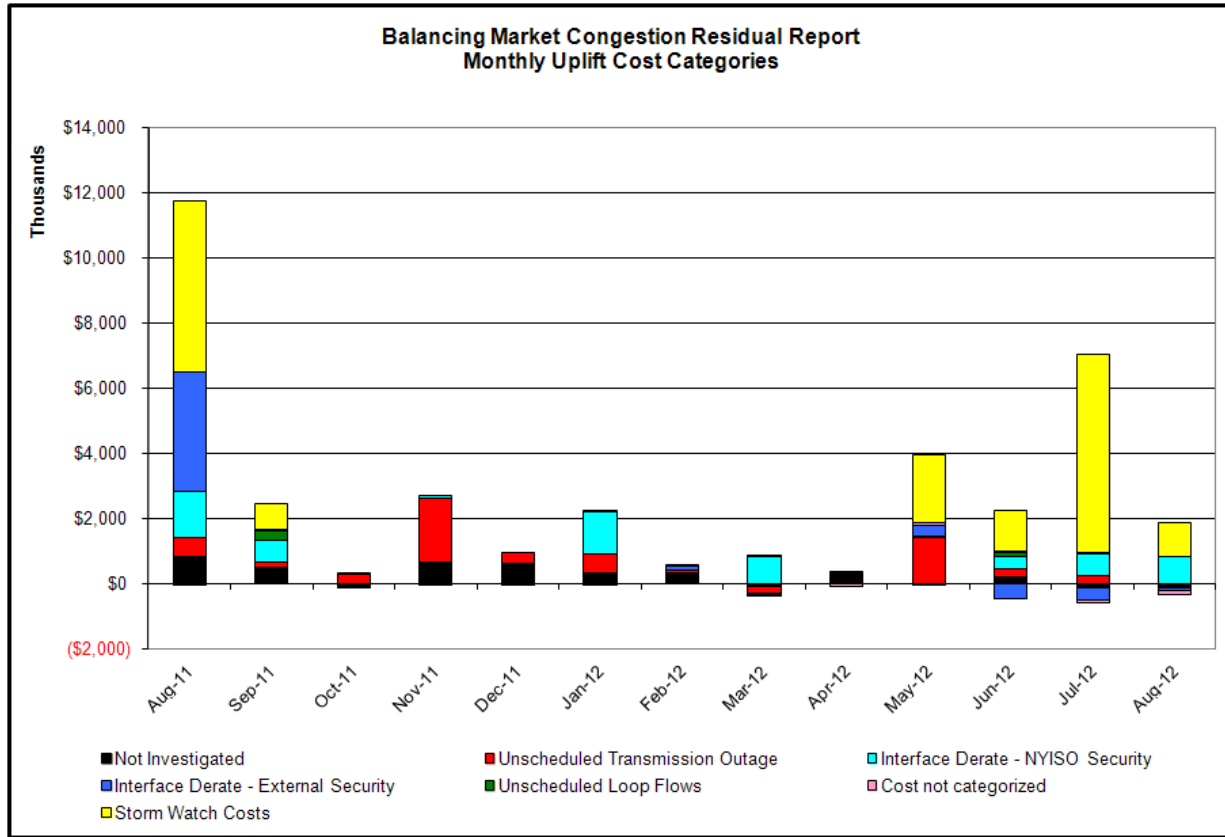








Market Performance Metrics



Day's investigated in August: 3,5,6,9,11,17,27

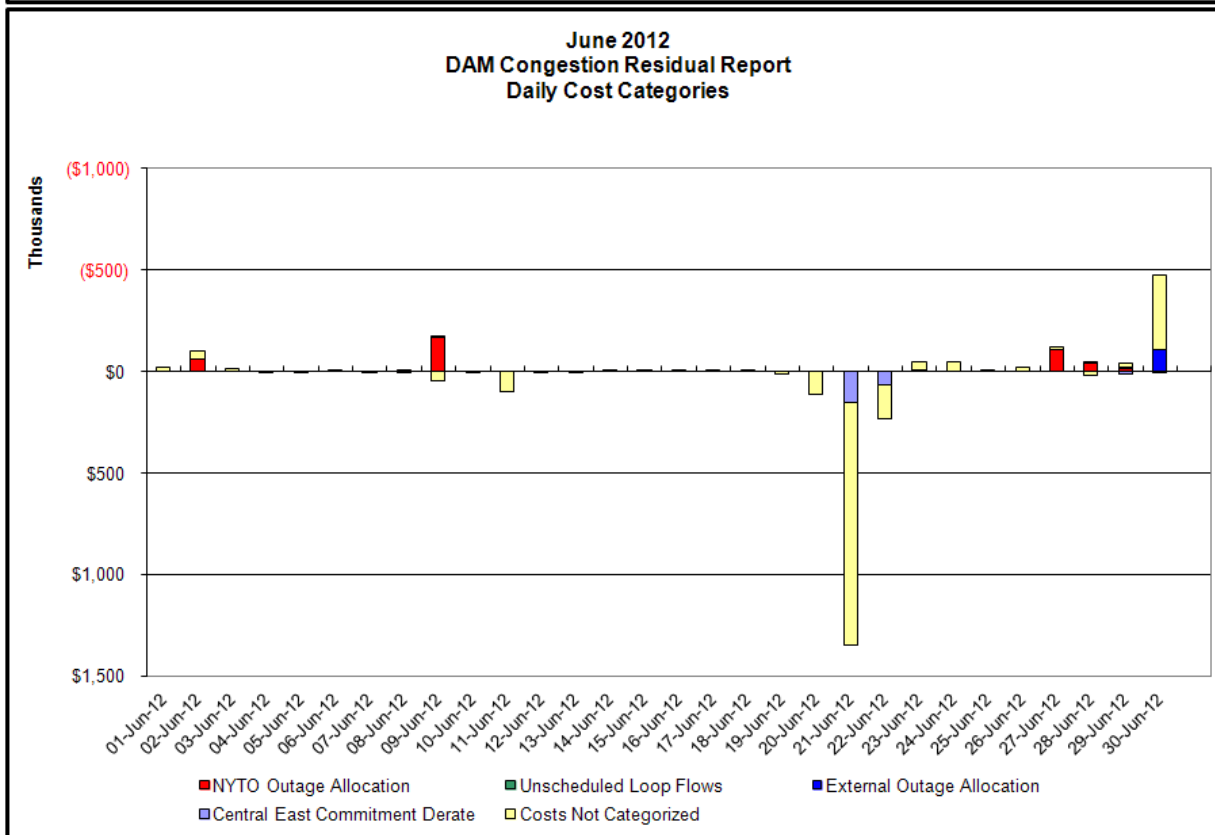
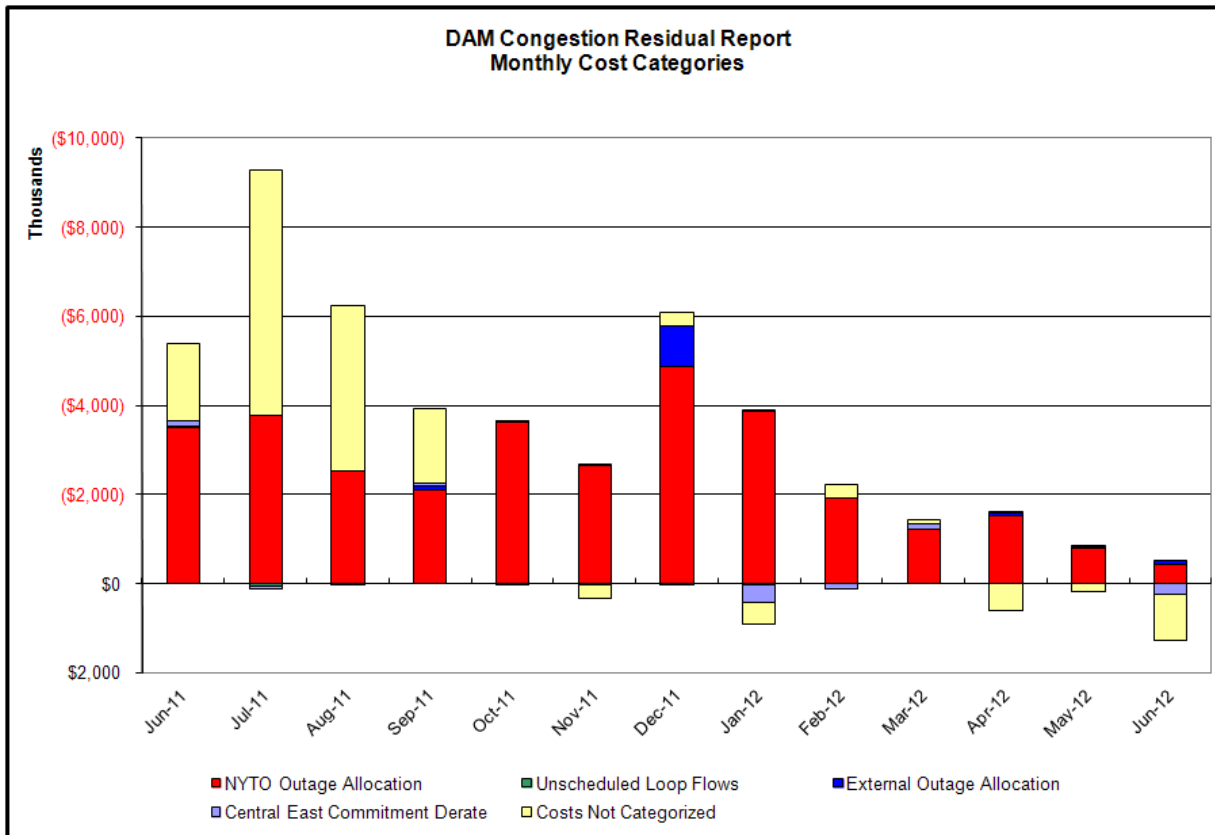
Event	Date (yyyymm)	Hours	Description
	8/3/2012	15-16	Derate FreshKills-Willow Brook 345kV (#29212)
	8/3/2012	19,21,23	Uprate Gowanus-GoethalsS 345kV (#26)
	8/3/2012	0,10,19-21	Uprate Gowanus-Greenwood 138kV (#42232)
	8/3/2012	15-16	DerateGowanus-Greenwood 138kV (#42232)
	8/3/2012	15	Derate Niagara-Packard 230kV (#62) for I/o TWR:Niagara 61&64
	8/3/2012	14,15	Derate Leeds-Pleasant Valley 345kV (#92) for I/o Athens-Pleasant Valley 345kV (#91)
	8/3/2012	14-16	Derate Scriba-Volney 345kV (#20) for I/o Scriba-Volney 345kV (#21)
	8/3/2012	14	Lake Erie Clockwise Circulation, DAM-RTM exceeds 125MW; Leeds-Pleasant Valley (#92)
	8/5/2012	14-21	Thunderstorm Alert
	8/5/2012	14-21	Derate FreshKills-Willow Brook 345kV (#29212)
	8/5/2012	11,13	Uprate Gowanus-GoethalsS 345kV (#26)
	8/5/2012	14-19,21	Derate Scriba-Volney 345kV (#20) for I/o Scriba-Volney 345kV (#21)
	8/5/2012	14-17,19-21	Derate Sprainbrook-EastGarden City 345kV (#Y49)
	8/5/2012	14	Derate Gowanus-Greenwood 138kV (#42232)
	8/6/2012	11,12	Forced outage East Garden City 345/138kV (#BK1)
	8/6/2012	10,13,14	Uprate Central East
	8/6/2012	13,14	Uprate Farragut-Hudson Avenue 138kV (#32077)
	8/6/2012	9,11,12,16,21	Derate FreshKills-Willow Brook 345kV (#29212)
	8/6/2012	13,14	Uprate Gowanus-GoethalsS 345kV (#26)
	8/6/2012	9,11,12,16,21	Derate Gowanus-Greenwood 138kV (#42232)
	8/6/2012	21	Derate Greenwood-Kent Avenue 138kV (#31232) for I/o Vernon-Greenwood 138kV (#31231)
	8/6/2012	16	Derate Leeds-Pleasant Valley 345kV (#92) for I/o Athens-Pleasant Valley 345kV (#91)
	8/6/2012	9,11,12	Derate Scriba-Volney 345kV (#20) for I/o Scriba-Volney 345kV (#21)
	8/6/2012	10,13	IESO_AC - NY Scheduling Limit
	8/6/2012	16	Lake Erie Clockwise Circulation, DAM-RTM exceeds 125MW; Leeds-Pleasant Valley (#92)
	8/9/2012	15-23	Thunderstorm Alert
	8/9/2012	15-23	Derate FreshKills-Willow Brook 345kV (#29212)
	8/9/2012	9	Uprate Gowanus-GoethalsS 345kV (#26)
	8/9/2012	15,21,22	Derate Gowanus-Greenwood 138kV (#42232)
	8/9/2012	13,14	Uprate Scriba-Volney 345kV (#20) for I/o Scriba-Volney 345kV (#21)
	8/9/2012	14	IESO_AC - NY Scheduling Limit
	8/11/2012	17,19,20	Early Return to Service Dunwoode-Shore Road 345kV (#Y50)
	8/11/2012	4,13-17	Early Return to Service Greenwood-Kent Ave. 138kV (#31232)
	8/11/2012	2,3,9,10,12,14	Uprate Gowanus-GoethalsS 345kV (#26)
	8/11/2012	12	IESO_AC DNI Ramp Limit
	8/17/2012	17-23	Thunderstorm Alert
	8/17/2012	17-23	Derate FreshKills-Willow Brook 345kV (#29212)
	8/17/2012	17,19,20-23	Derate Gowanus-Greenwood 138kV (#42232)
	8/17/2012	16	NYCA DNI Ramp Limit
	8/27/2012	9,11,12,20	Uprate Gowanus-GoethalsS 345kV (#26)
	8/27/2012	8,9,20	Uprate Scriba-Volney 345kV (#20) for I/o Scriba-Volney 345kV (#21)
	8/27/2012	21	IESO_AC DNI Ramp Limit

Real-Time Balancing Market Congestion Residual (Uplift Cost) Categories

<u>Category</u>	<u>Cost Assignment</u>	<u>Events Types</u>	<u>Event Examples</u>
Storm Watch	Zone J	Thunderstorm Alert (TSA)	TSA Activations
Unscheduled Transmission Outage	Market-wide	Reduction in DAM to RTM transfers related to unscheduled transmission outage	Forced Line Outage, Unit AVR Outages
Interface Derate - NYISO Security	Market-wide	Reduction in DAM to RTM transfers not related to transmission outage	Interface Derates due to RTM voltages
Interface Derate - External Security	Market-wide	Reduction in DAM to RTM transfers related to External Control Area Security Events	TLR Events, External Transaction Curtailments
Unscheduled Loop Flows	Market-wide	Changes in DAM to RTM unscheduled loop flows impacting NYISO Interface transmission constraints	DAM to RTM Clockwise Lake Erie Loop Flows greater than 125 MW

Monthly Balancing Market Congestion Report Assumptions/Notes

- 1) Storm Watch Costs are identified as daily total uplift costs
- 2) At a minimum those days with \$ 100 K/HR, shortfall of \$200 K/Day or more, or surplus of \$ 100 K/Day or more are investigated
- 3) Uplift costs associated with multiple event types are apportioned equally by hour
- 4) Investigations began with Dec 2008. Prior months are reported as Not Investigated.



Day-Ahead Market Congestion Residual Categories

<u>Category</u>	<u>Cost Assignment</u>	<u>Events Types</u>	<u>Event Examples</u>
NYTO Outage Allocation	Responsible TO	Direct allocation to NYTO's responsible for transmission equipment status change.	DAM scheduled outage for equipment modeled in-service for the TCC Auction.
Unscheduled Loop Flows	All TO by Monthly Allocation Factor	Residual impact of Lake Erie circulation, MW difference between the DAM and TCC Auction.	Lake Erie Loop Flow Assumptions
External Outage Allocation	All TO by Monthly Allocation Factor	Direct allocation to transmission equipment status change caused by change in status of external equipment.	Tie line required out-of-service by TO of neighboring control area.
Central East Commitment Derate	All TO by Monthly Allocation Factor	Reductions in the DAM Central East_VC limit as compared to the TCC Auction limit, which are not associated with transmission line outages.	

