

Operations Performance Metrics Monthly Report



November 2010 Report

Operations & Reliability Department New York Independent System Operator

Prepared by NYISO Operations Analysis and Services, based on settlements initial invoice data obtained on or before December 10.

Table of Contents

- ◆ **Highlights**
 - *Operations Performance*

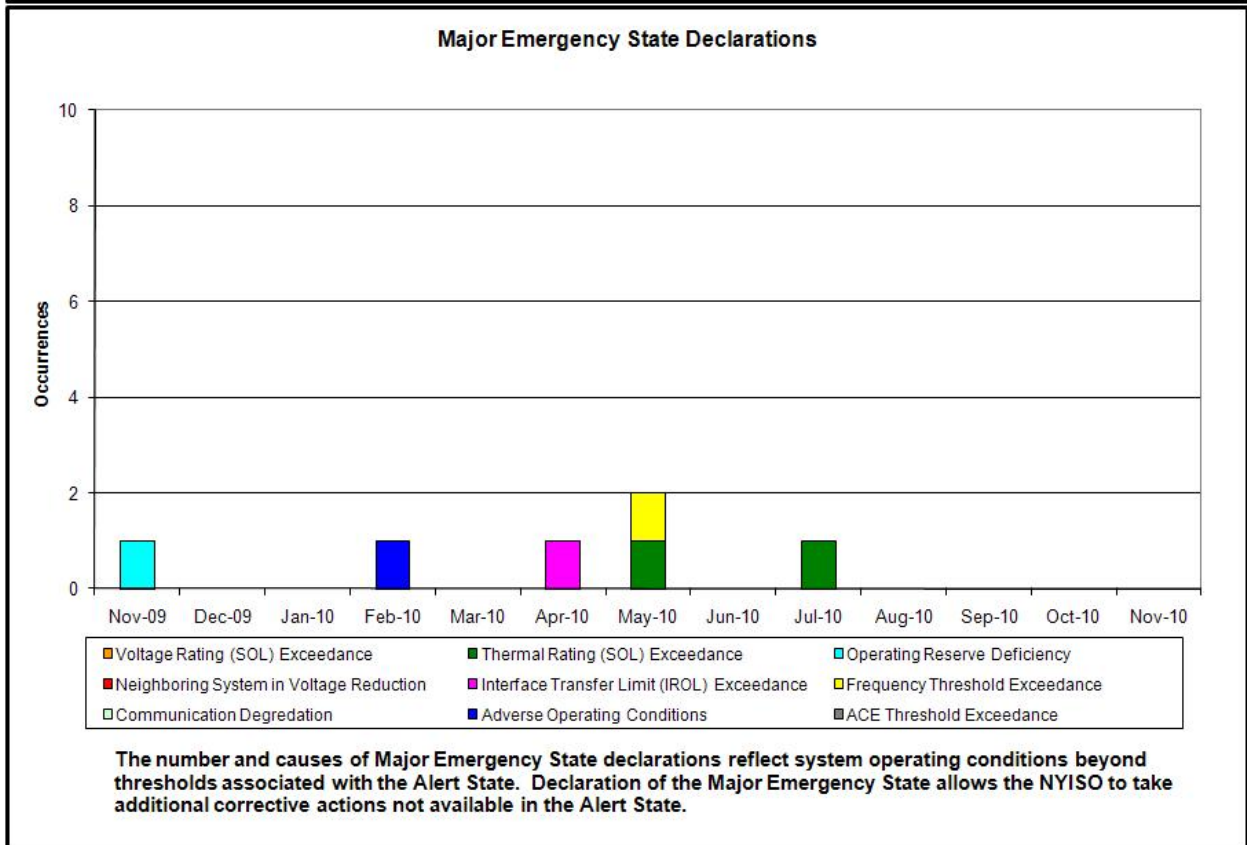
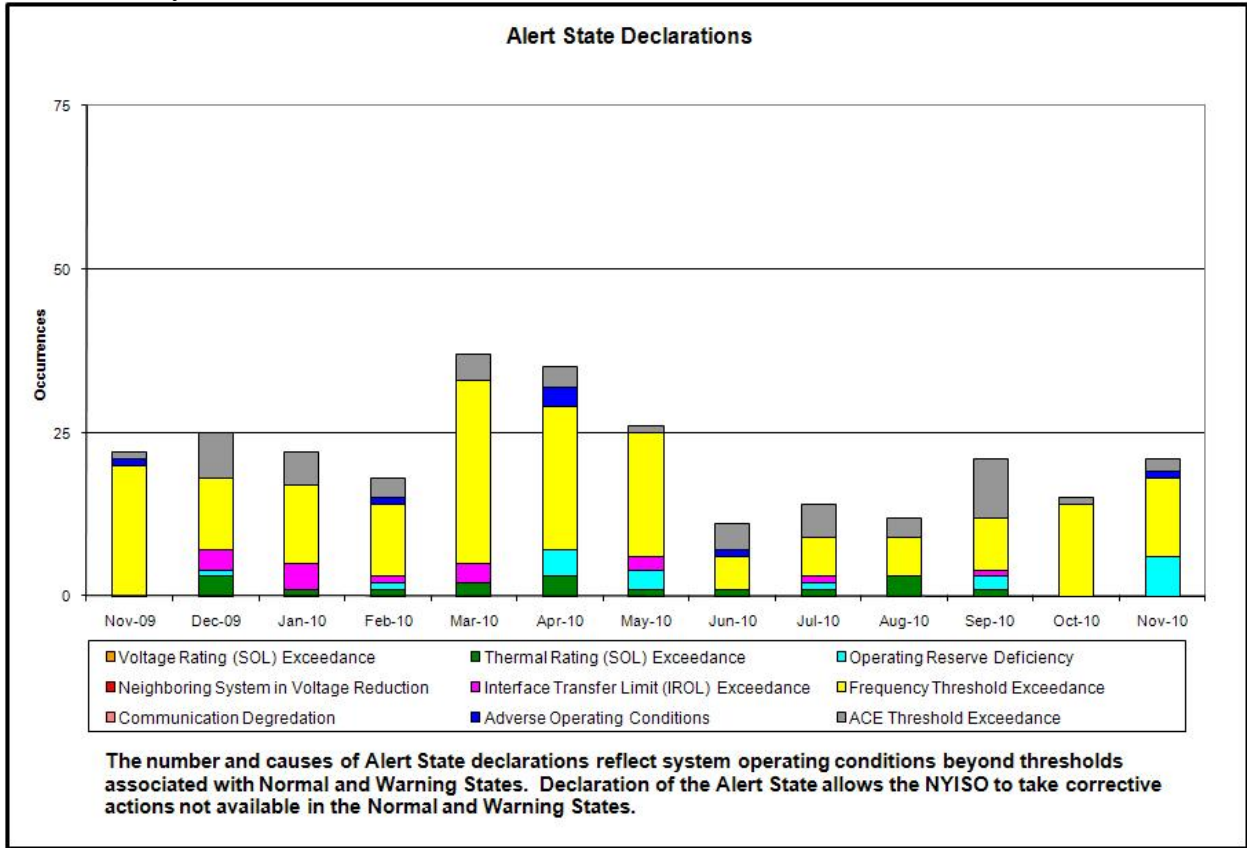
- ◆ **Reliability Performance Metrics**
 - *Alert State Declarations*
 - *Major Emergency State Declarations*
 - *IROL Exceedance Times*
 - *Balancing Area Control Performance*
 - *Reserve Activations*
 - *Disturbance Recovery Times*
 - *Load Forecasting Performance*
 - *Wind Forecasting Performance*
 - *Lake Erie Circulation and ISO Schedules*

- ◆ **Market Performance Metrics**
 - *RTM Congestion Residuals Monthly Trend*
 - *RTM Congestion Residuals Daily Costs*
 - *RTM Congestion Residuals Event Summary*
 - *RTM Congestion Residuals Cost Categories*
 - *DAM Congestion Residuals Monthly Trend*
 - *DAM Congestion Residuals Daily Costs*
 - *DAM Congestion Residuals Cost Categories*
 - *NYCA Unit Uplift Components Monthly Trend*
 - *NYCA Unit Uplift Components Daily Costs*
 - *ICAP Spot Market Clearing Price*
 - *UCAP Awards*

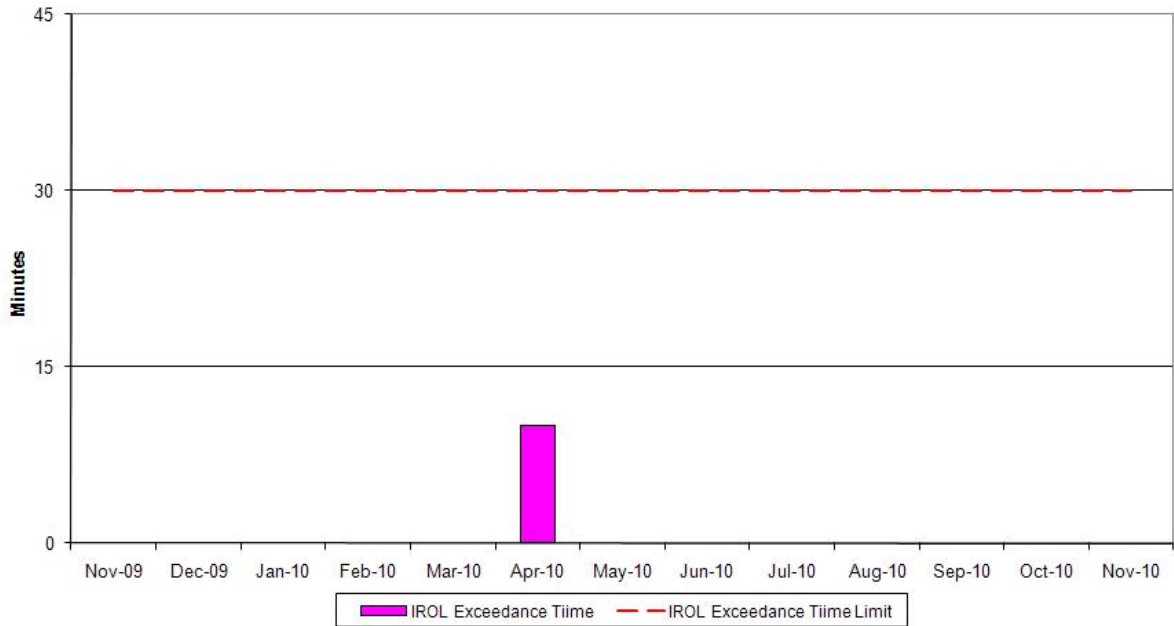
November 2010 Operations Performance Highlights

- Peak load of 21,671 MW occurred on November 30 for hour beginning 17
- Clockwise Lake Erie circulation values remain low. No TLR Level 3 declarations implemented.

Reliability Performance Metrics

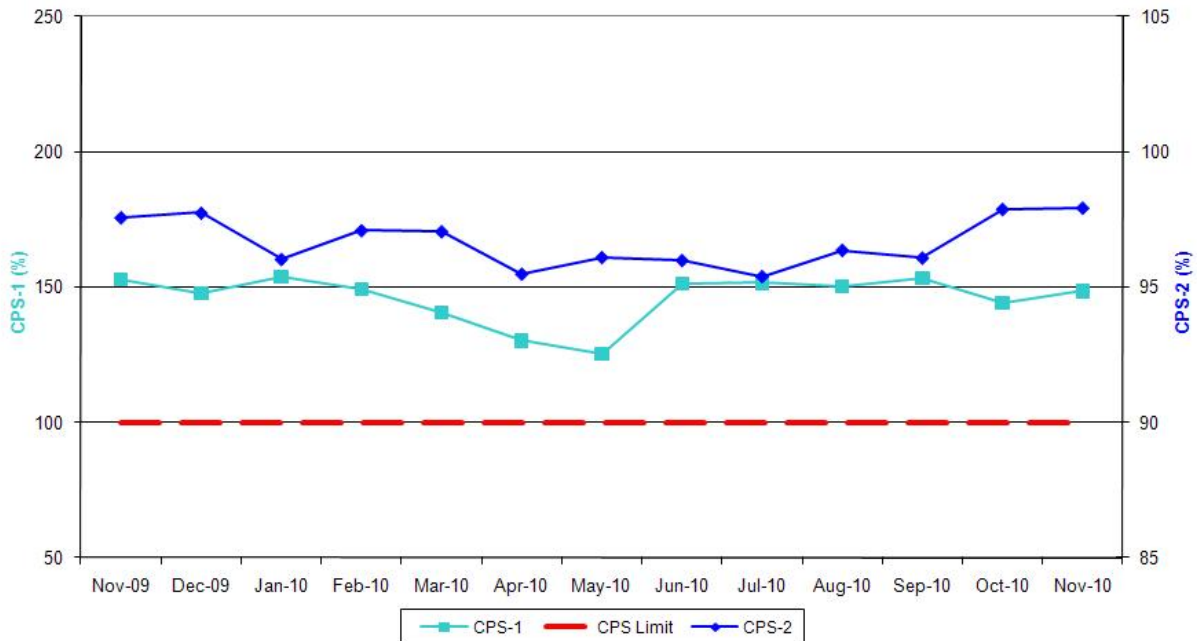


NERC IROL Time Over Limit



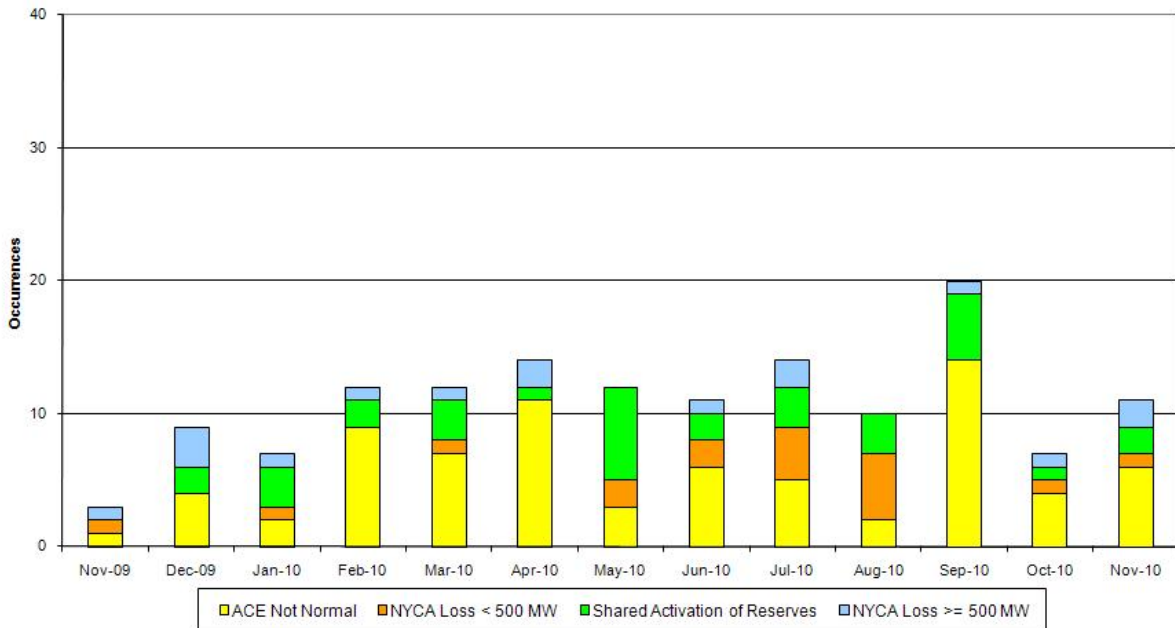
For IROL exceedances leading to Major Emergency State declarations, the maximum IROL exceedance time is identified. IROL exceedances of less than thirty minutes are considered NERC compliant.

NERC Control Performance Standards



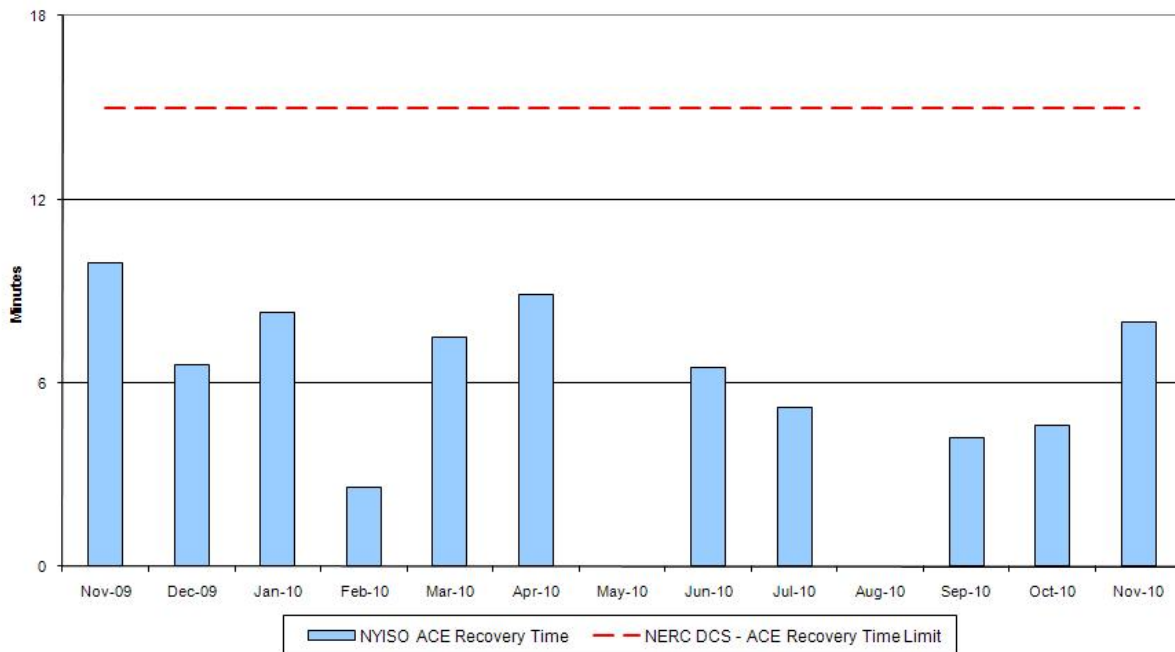
The values of NERC Control Performance Standards (CPS-1 and CPS-2) are indicators of the NYISO Area resource and demand balancing. Values exceeding the identified thresholds are NERC compliant.

Reserve Activations



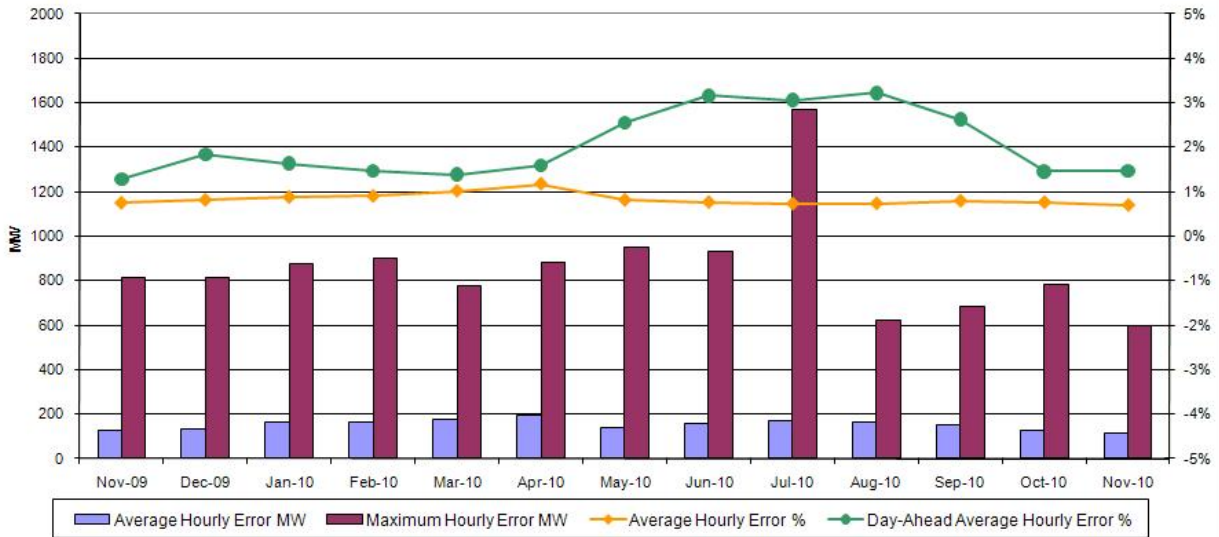
NYISO Reserve Activations are indicators of the need to respond to unexpected operational conditions within the NYISO Area or to assist a neighboring Area (Shared Activation of Reserves) by activating an immediate resource and demand balancing operation.

DCS Event Time to ACE Recovery



For NYISO initiated Reportable Disturbances, the maximum ACE recovery time is identified. Recovery times of less than 15 minutes are considered NERC compliant.

Load Forecast Performance

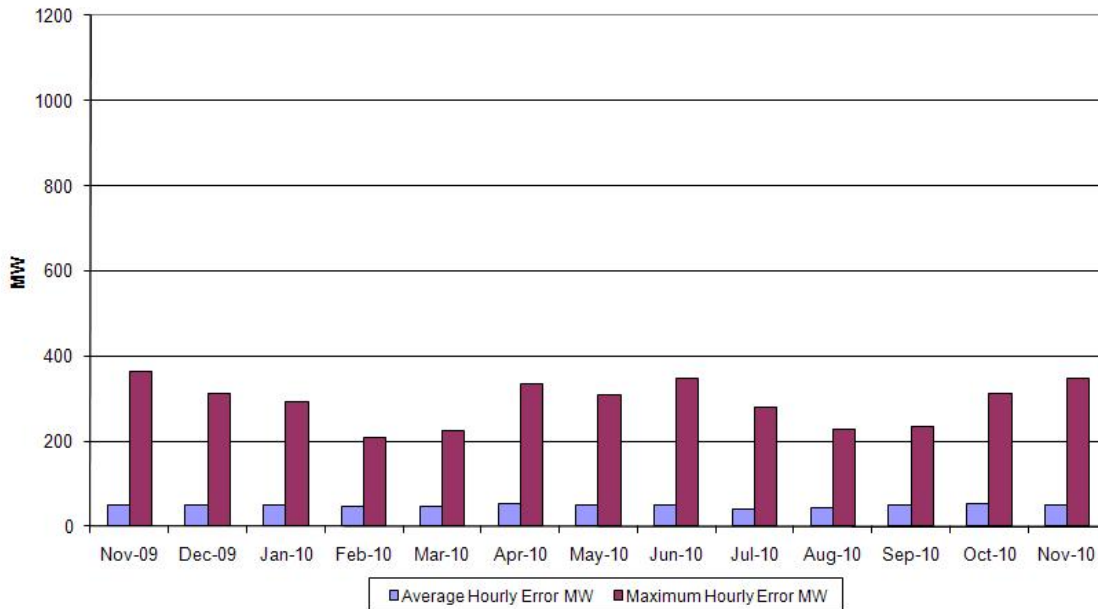


Hourly Error MW - Absolute value of the difference between the hourly average actual load demand and the average hour ahead forecast load demand.

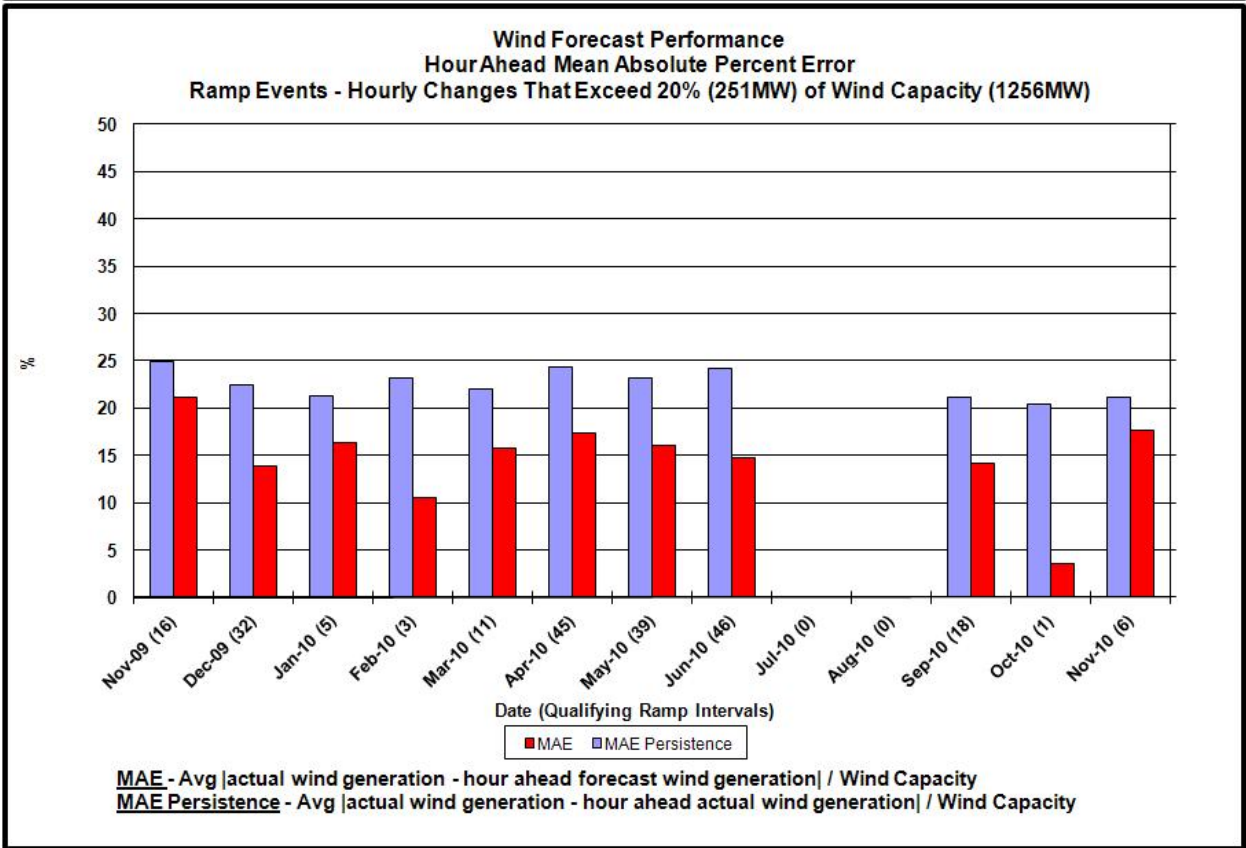
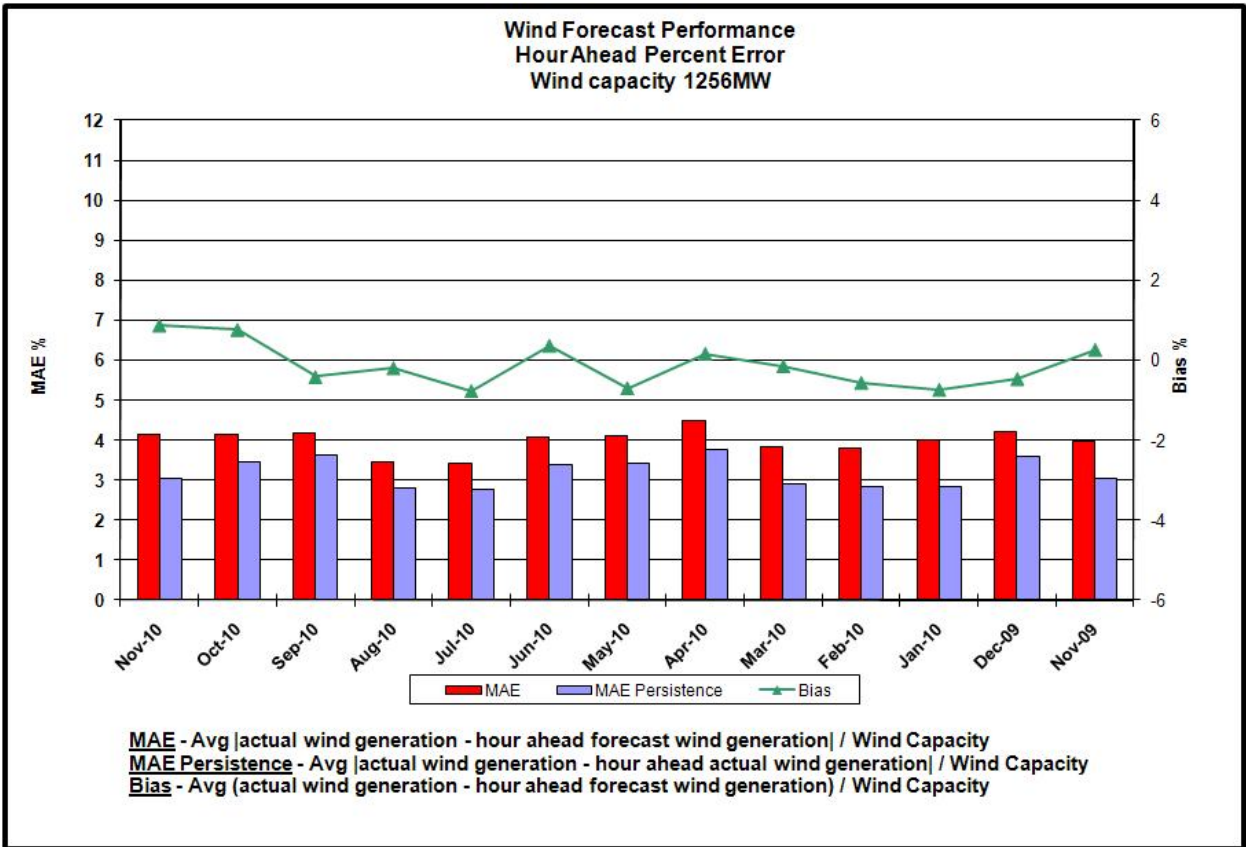
Average Hourly Error % - Average value of the ratio of hourly average error magnitude to hourly average actual load demand.

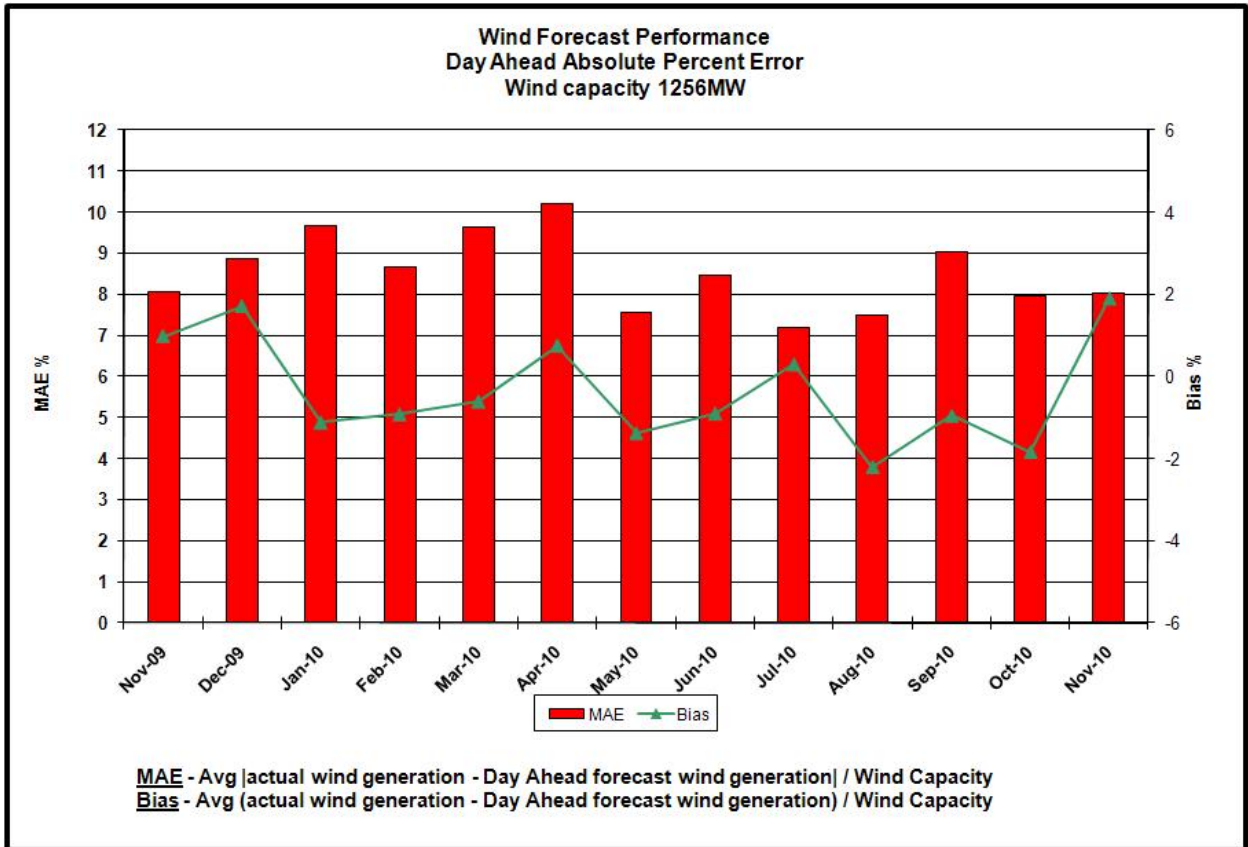
Day-Ahead Average Hourly Error % - Average across all hours of the month of the absolute value of the difference between actual load demand and the Day-Ahead forecast load demand, divided by the actual load demand.

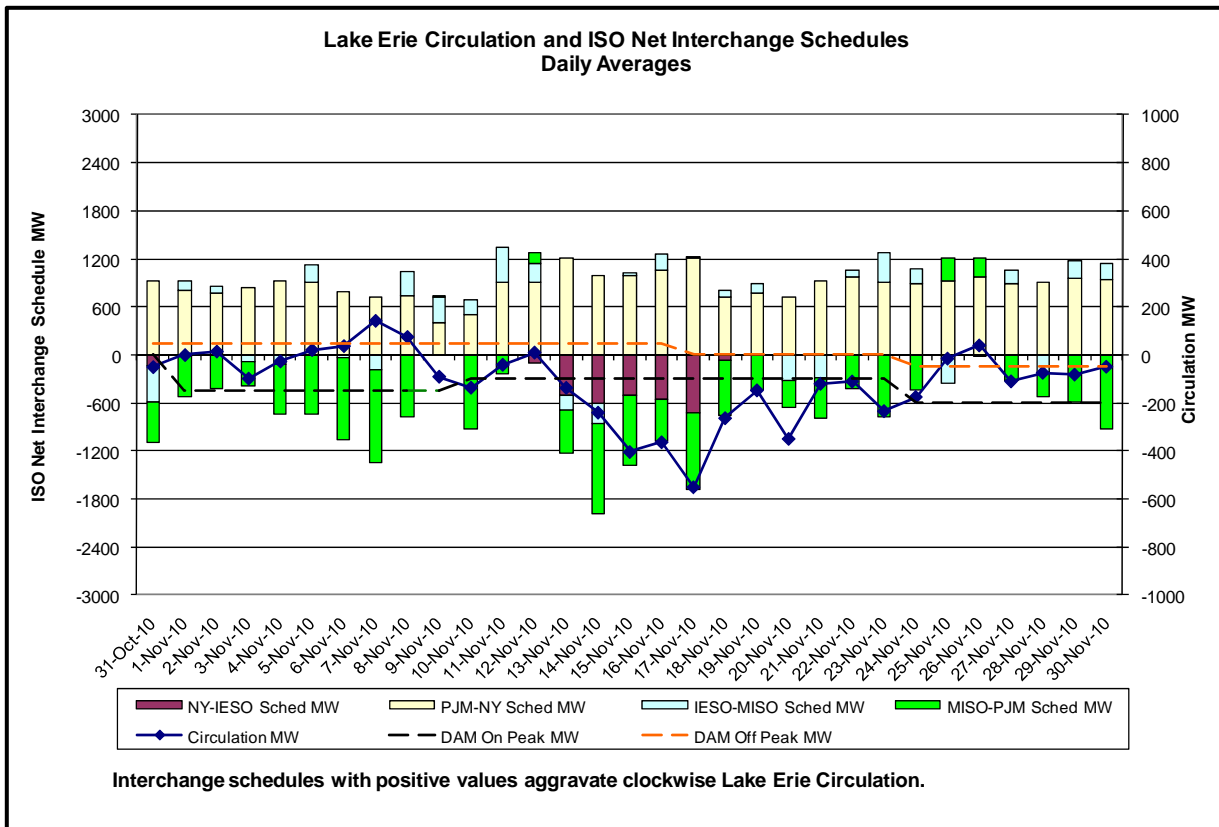
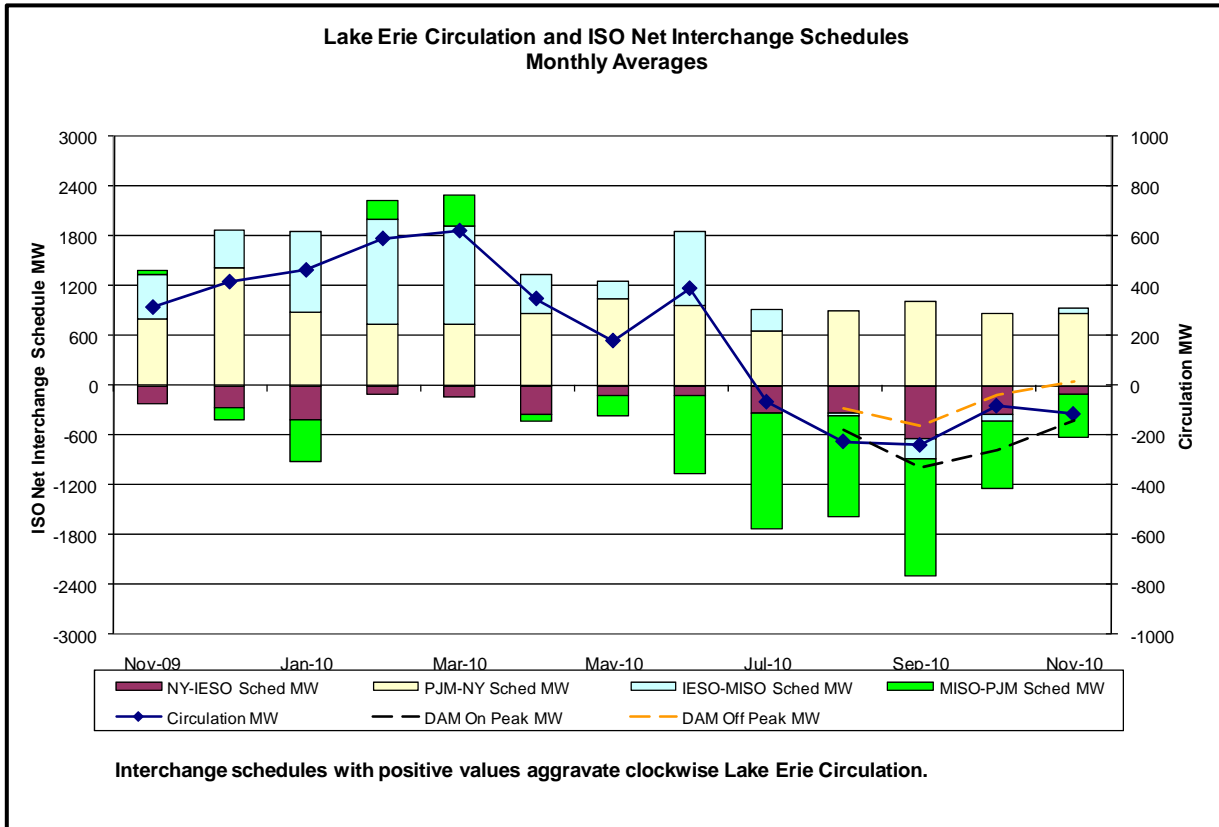
Wind Forecast Performance Hour Ahead MW Error



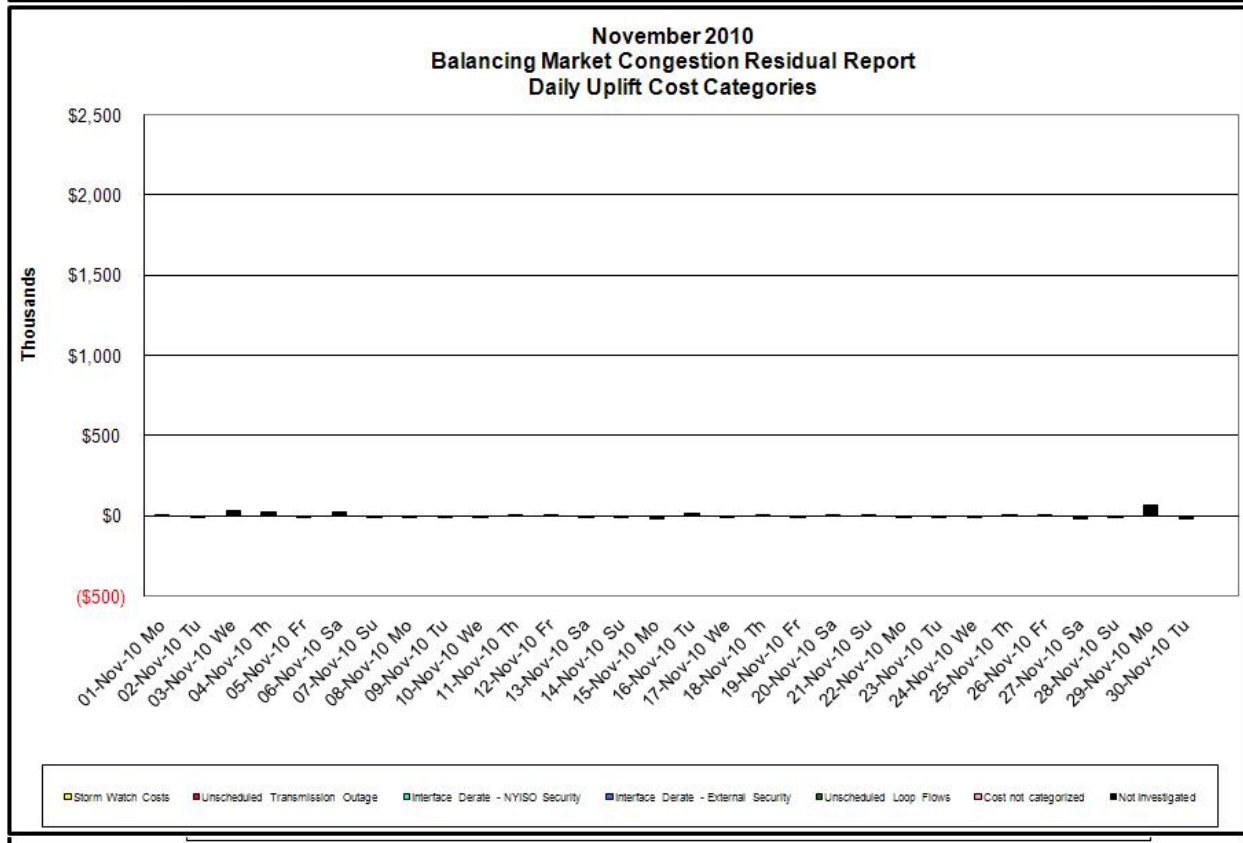
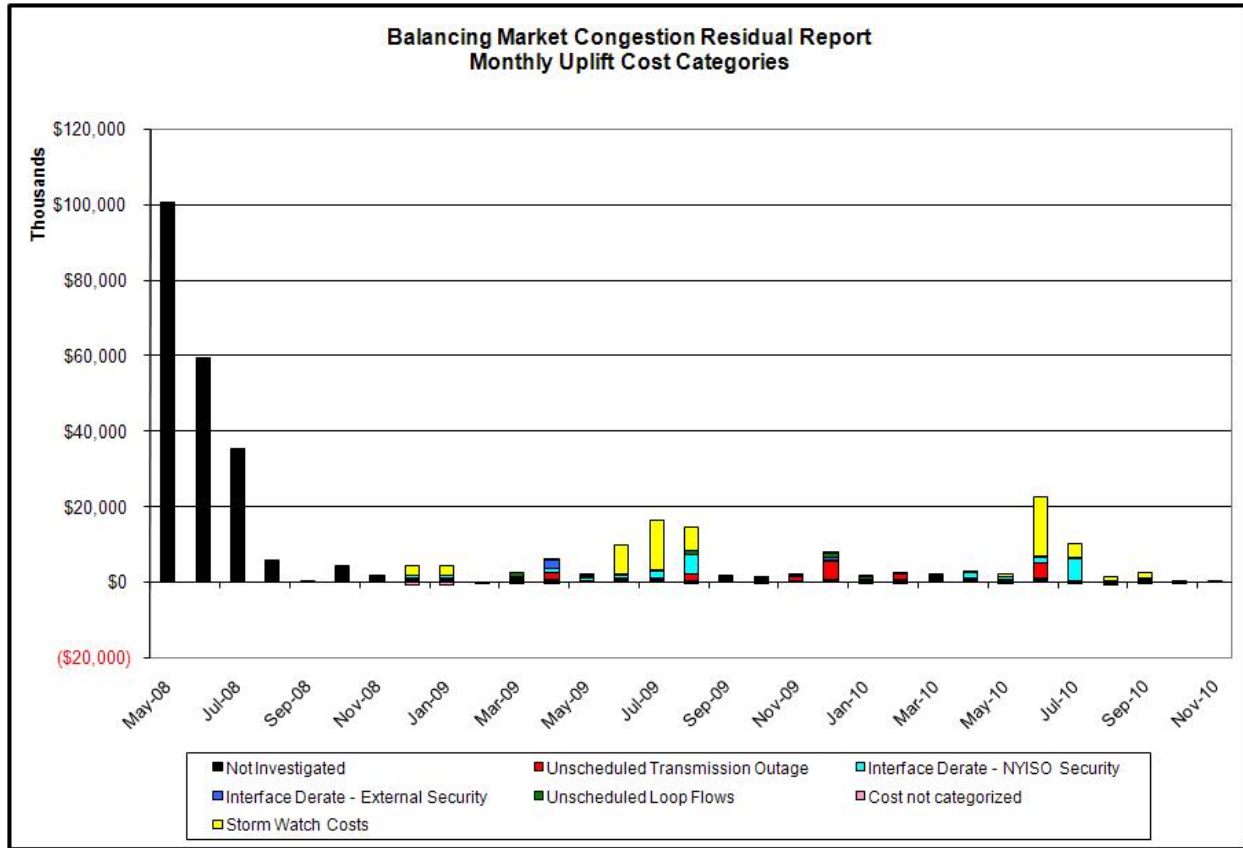
Hourly Error MW - Absolute value of the difference between the hourly average actual wind generation and the average hour ahead forecast wind generation.







Market Performance Metrics



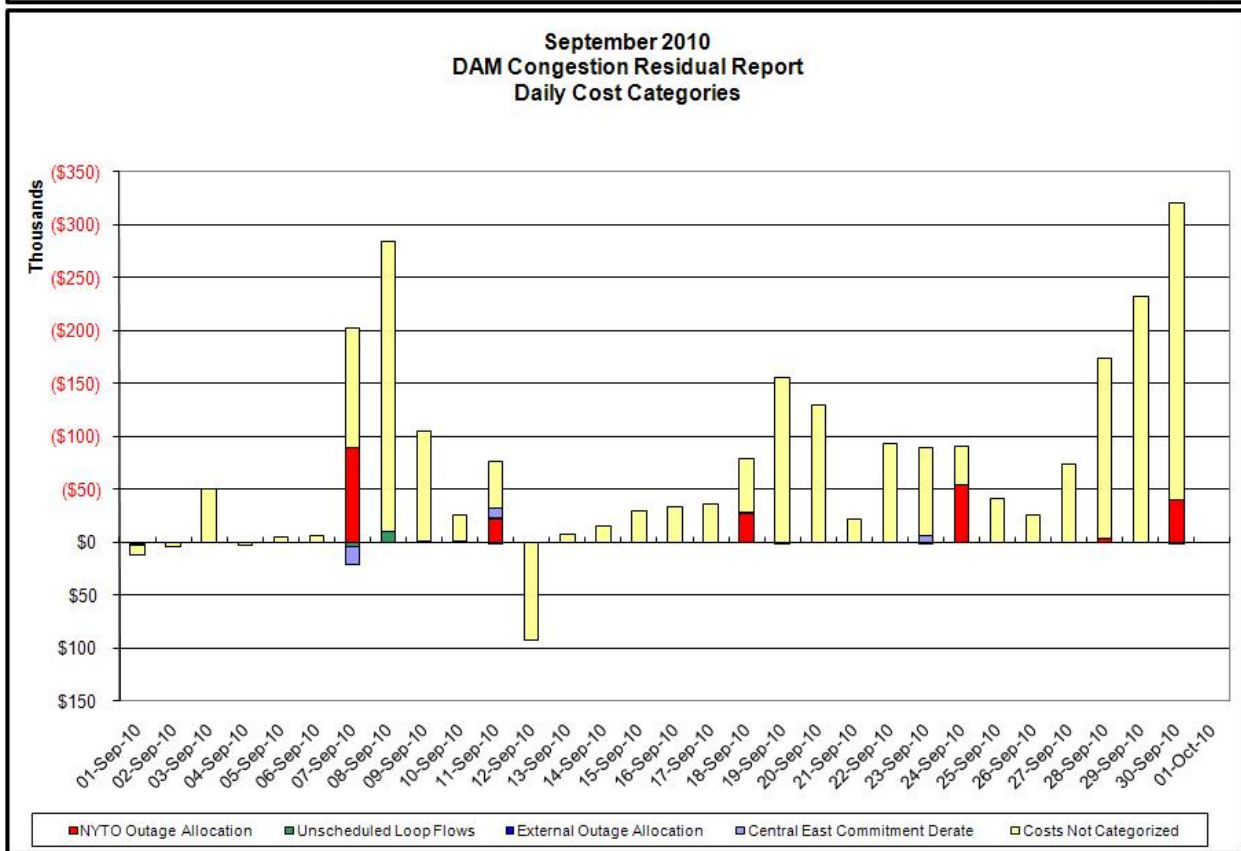
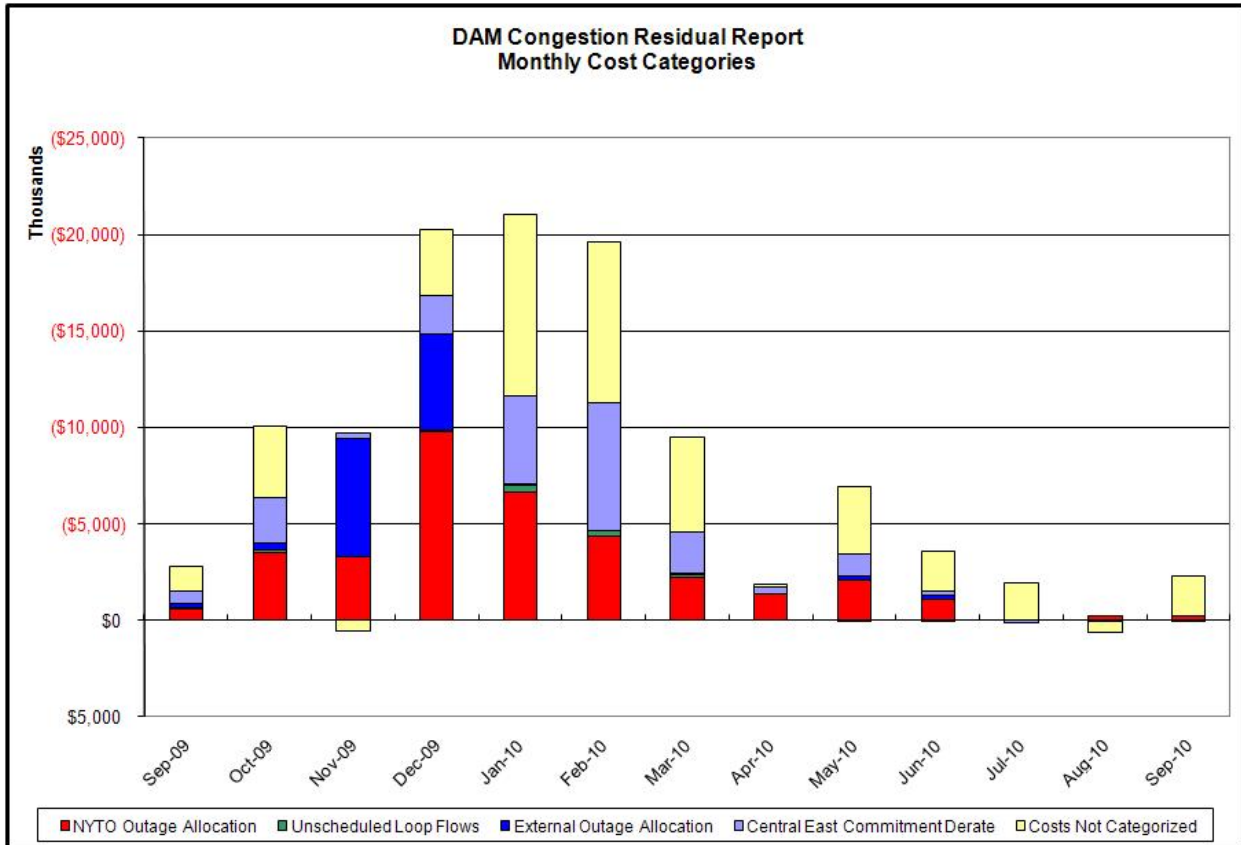
Day's investigated in November:		
Event	Date (yyyy) Hours	Description

Real-Time Balancing Market Congestion Residual (Uplift Cost) Categories

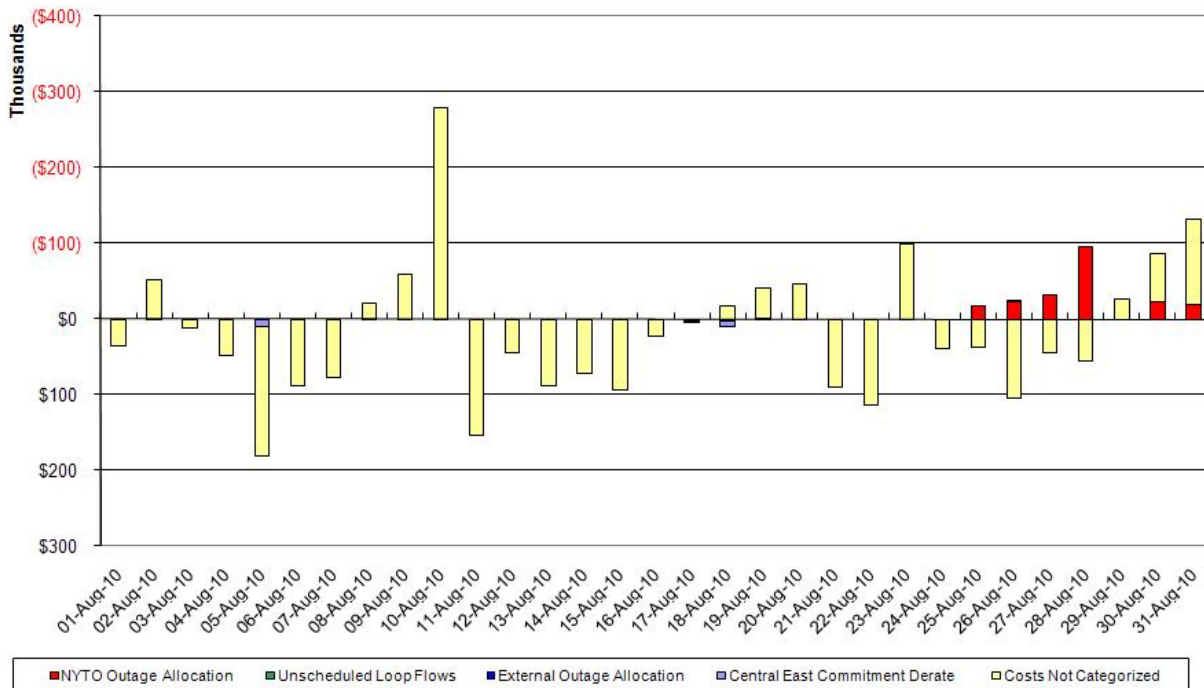
<u>Category</u>	<u>Cost Assignment</u>	<u>Events Types</u>	<u>Event Examples</u>
Storm Watch	Zone J	Thunderstorm Alert (TSA)	TSA Activations
Unscheduled Transmission Outage	Market-wide	Reduction in DAM to RTM transfers related to unscheduled transmission outage	Forced Line Outage, Unit AVR Outages
Interface Derate - NYISO Security	Market-wide	Reduction in DAM to RTM transfers not related to transmission outage	Interface Derates due to RTM voltages
Interface Derate - External Security	Market-wide	Reduction in DAM to RTM transfers related to External Control Area Security Events	TLR Events, External Transaction Curtailments
Unscheduled Loop Flows	Market-wide	Changes in DAM to RTM unscheduled loop flows impacting NYISO Interface transmission constraints	DAM to RTM Clockwise Lake Erie Loop Flows greater than 300MW

Monthly Balancing Market Congestion Report Assumptions/Notes

- 1) Storm Watch Costs are identified as daily total uplift costs
- 2) At a minimum those days with \$ 100 K/HR, shortfall of \$ 200 K/Day or more, or surplus of \$ 100 K/Day or more are investigated
- 3) Uplift costs associated with multiple event types are apportioned equally by hour
- 4) Investigations began with Dec 2008. Prior months are reported as Not Investigated.



**August 2010
DAM Congestion Residual Report
Daily Cost Categories**



Day-Ahead Market Congestion Residual Categories

<u>Category</u>	<u>Cost Assignment</u>	<u>Events Types</u>	<u>Event Examples</u>
NYTO Outage Allocation	Responsible TO	Direct allocation to NYTO's responsible for transmission equipment status change.	DAM scheduled outage for equipment modeled in-service for the TCC Auction.
Unscheduled Loop Flows	All TO by Monthly Allocation Factor	Residual impact of Lake Erie circulation, MW difference between the DAM and TCC Auction.	Lake Erie Loop Flow Assumptions
External Outage Allocation	All TO by Monthly Allocation Factor	Direct allocation to transmission equipment status change caused by change in status of external equipment.	Tie line required out-of-service by TO of neighboring control area.
Central East Commitment Derate	All TO by Monthly Allocation Factor	Reductions in the DAM Central East_VC limit as compared to the TCC Auction limit, which are not associated with transmission line outages.	

