

Review of Price Correction Information Template and Additional Statistics

Billing and Price Correction Task Force
November 30, 2005

Nicole Bouchez, Ph.D.

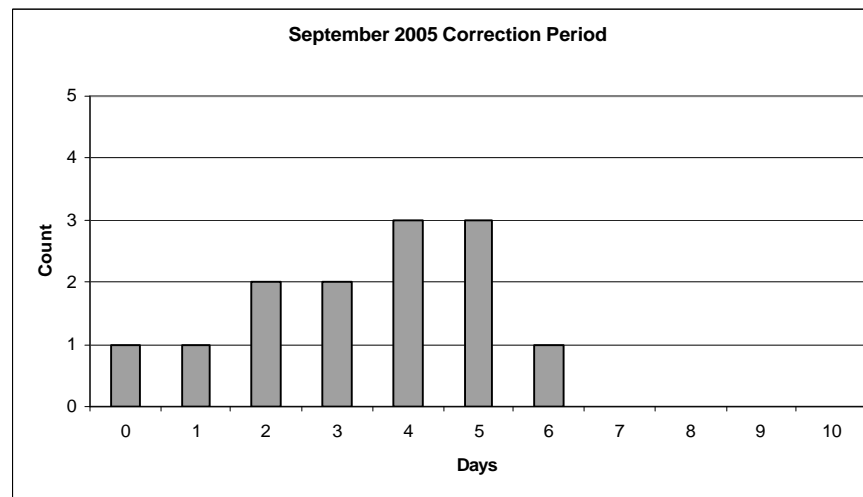
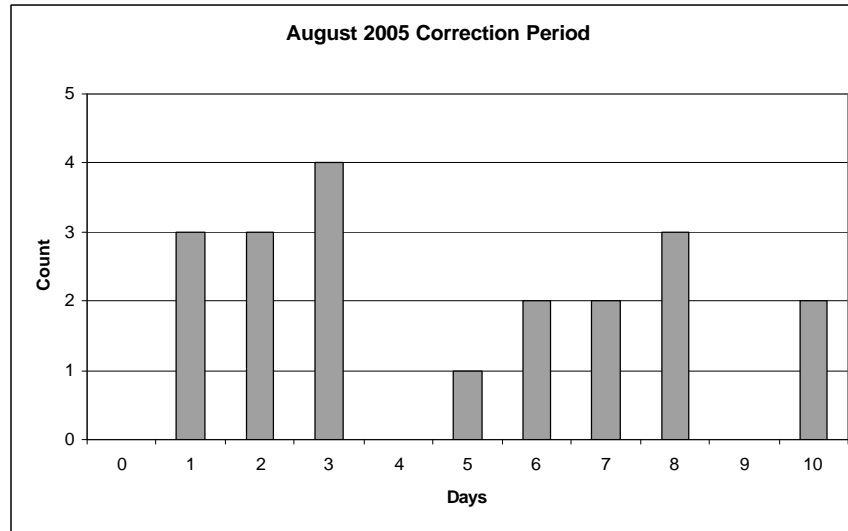
Sr. Economist

Market Monitoring and Performance

November 30, 2005

"for discussion only"

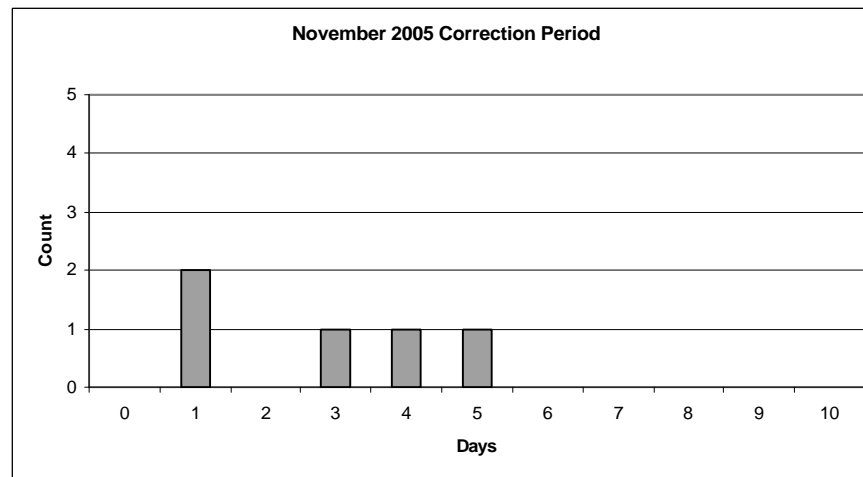
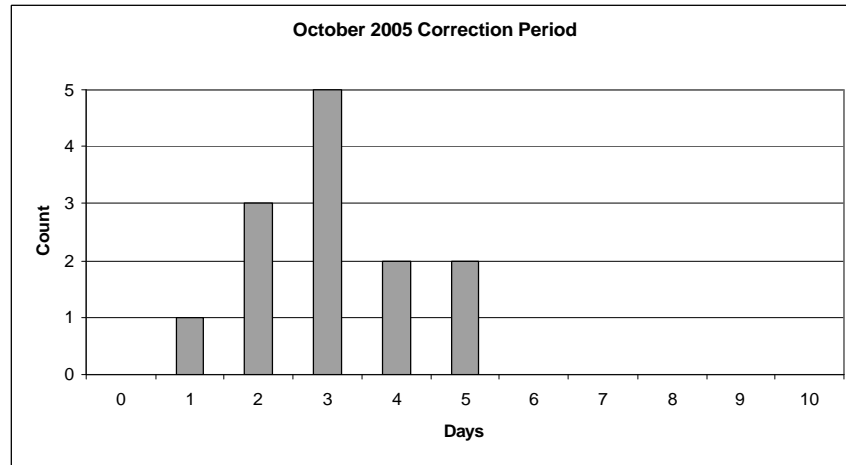
Correction Period



November 30, 2005

"for discussion only"

Correction Period



November 30, 2005

"for discussion only"

RTD Correction Report								
Date	First Interval	Last Interval	# of Intervals	Hours Corrected	Error Type	Error Source	Description	Additional Comments
1-Sep-2005	0:45	1:35	13	0, 1	Error in Selecting Price Setting Resource	Operations	Load Forecaster	
1-Sep-2005	2:15	2:15	1	2	Error in Selecting Price Setting Resource	Operations	Load Forecaster	
2-Sep-2005	0:50	1:20	7	0, 1	Error in Selecting Price Setting Resource	Operations	Load Forecaster	
3-Sep-2005	0:45	1:35	13	0, 1	Error in Selecting Price Setting Resource	Operations	Load Forecaster	
4-Sep-2005	0:45	1:20	8	0, 1	Error in Selecting Price Setting Resource	Operations	Load Forecaster	
4-Sep-2005	7:55	7:55	1	7	Calculation Error	Operations	Non-convergence	Prices inconsistent with dispatch
5-Sep-2005	0:45	1:20	8	0, 1	Error in Selecting Price Setting Resource	Operations	Load Forecaster	
7-Sep-2005	8:15	8:15	1	8	Error in Selecting Price Setting Resource	Operations	Load Forecaster	
8-Sep-2005	12:55	12:55	1	12	Error in Selecting Price Setting Resource	Generators	Meter Failure	Generator disappeared from the RTD solution
15-Sep-2005	20:40	20:40	1	20	Error in Selecting Price Setting Resource	Generators	Meter Failure	Metering error that created a LI price spike
16-Sep-2005	14:45	14:50	2	14	Error in Selecting Price Setting Resource	Generators	Meter Failure	Generator disappeared from the RTD solution
16-Sep-2005	14:56	15:24	7	15	Error in Selecting Price Setting Resource	Generators	Meter Failure	Generator disappeared from the RTD solution
17-Sep-2005	2:02	5:35	43	2 - 5	Calculation Error	Operations	Software Error	Single islanded generator
19-Sep-2005	7:00	20:30	164	6 - 20	Calculation Error	Operations	Software Error	Single islanded generator
26-Sep-2005	5:45	5:45	1	5	Error in Selecting Price Setting Resource	Generators	Meter Failure	
30-Sep-2005	10:10	10:53	12	10	Error in Selecting Price Setting Resource	Generators	Meter Failure	
1-Oct-2005	6:35	18:30	144	6 - 18	Calculation Error	Generators	Software Error	Single islanded generator
3-Oct-2005	7:00	11:55	60	7 - 11	Calculation Error	Generators	Software Error	Two islanded generators
4-Oct-2005	13:05	13:05	1	13	Error in Selecting Price Setting Resource	TOs	Data Error	Bad input data for imports
11-Oct-2005	13:40	13:40	1	13	Error in Selecting Price Setting Resource	Generators	Meter Failure	
13-Oct-2005	0:17	0:34	3	0	Error in Selecting Price Setting Resource	Operations	Load Forecaster	
15-Oct-2005	0:35	0:35	1	0	Calculation Error	MIS	Software Error	Congestion too low to post
15-Oct-2005	0:53	1:00	2	0	Calculation Error	Operations	Non-convergence	Two intervals are indeterminacies
15-Oct-2005	4:35	4:35	1	4	Calculation Error	Operations	Non-convergence	
16-Oct-2005	23:10	0:00	11	23	Error in Selecting Price Setting Resource	Operations	Load Forecaster	
17-Oct-2005	1:05	1:05	1	1	Calculation Error	Operations	Other	\$8000+ shadow price on Central East
18-Oct-2005	3:00	3:00	1	2	Calculation Error	Operations	Non-convergence	
18-Oct-2005	11:50	12:50	15	11, 12	Error in Selecting Price Setting Resource	Operations	Data Error	IMO schedule was erroneously zeroed out; OH imports drop to zero for all intervals in this hour
27-Oct-2005	0:35	0:35	1	0	Calculation Error	Operations	Other	\$4500+ shadow prices - No apparent reason
27-Oct-2005	2:25	2:25	1	2	Error in Selecting Price Setting Resource	Generators	Meter Failure	
27-Oct-2005	14:30	14:30	1	14	Calculation Error	Operations	Other	\$6000+ shadow prices - no clear reason for the binding constraint to have such a high SP
27-Oct-2005	22:15	22:30	4	22	Calculation Error	Operations	Software Error	Scheduling error due to min down time.
28-Oct-2005	2:10	2:20	3	2	Calculation Error	Generators	Meter Failure	Regulation shortage from 2:10 through 2:20. This appears to have been caused by a metering issue
28-Oct-2005	4:45	4:45	1	4	Calculation Error	Operations	Software Error	\$5000+ shadow price - PAR changes suggest that there should have been decreased congestion. Minor change in load, imports remain constant.
29-Oct-2005	7:15	7:20	2	7	Error in Selecting Price Setting Resource	Operations	Load Forecaster	
30-Oct-2005	2:05	9:55	96	2 - 9	Error in Selecting Price Setting Resource	Operations	Load Forecaster	
30-Oct-2005	18:15	18:25	3	18	Error in Selecting Price Setting Resource	Operations	Load Forecaster	
31-Oct-2005	2:15	6:30	52	2 - 6	Error in Selecting Price Setting Resource	Operations	Load Forecaster	
31-Oct-2005	21:15	21:15	1	21	Error in Selecting Price Setting Resource	Operations	Load Forecaster	
31-Oct-2005	22:15	22:15	1	22	Error in Selecting Price Setting Resource	Operations	Load Forecaster	
1-Nov-2005	0:00	0:00	1	23	Error in Selecting Price Setting Resource	Operations	Non-convergence	\$14,000 shadow price on Central East at 0:00
2-Nov-2005	0:15	0:15	1	0	Error in Selecting Price Setting Resource	Operations	Other	\$28,000 Central East shadow price at 0:15
6-Nov-2005	5:20	5:25	2	5	Error in Selecting Price Setting Resource	Operations	Load Forecaster	
13-Nov-2005	5:15	5:20	2	5	Error in Selecting Price Setting Resource	Operations	Load Forecaster	
13-Nov-2005	7:15	7:15	1	7	Error in Selecting Price Setting Resource	Operations	Load Forecaster	

November 30, 2005

"for discussion only"

Correction Period Statistics

August 2005

Avg	Std Dev	Max	Min	Days corrected
6.4	4.90	14	1	25

September 2005

Avg	Std Dev	Max	Min	Days corrected
3.4	1.76	6	0	13

October 2005

Avg	Std Dev	Max	Min	Days corrected
3.0	1.18	5	1	14

November 2005

Avg	Std Dev	Max	Min	Days corrected
2.8	1.79	5	1	5

November 30, 2005

"for discussion only"