

NYISO CEO/COO Report

*Management Committee Meeting
March 28, 2012*

Agenda #3

Report Items

CEO Report

- Infrastructure Master Plan
- CARIS 1 Report

COO Report

- Market Performance Highlights – For Information Only
- Operations Performance Metrics Monthly Report

Market Performance Highlights for February 2012

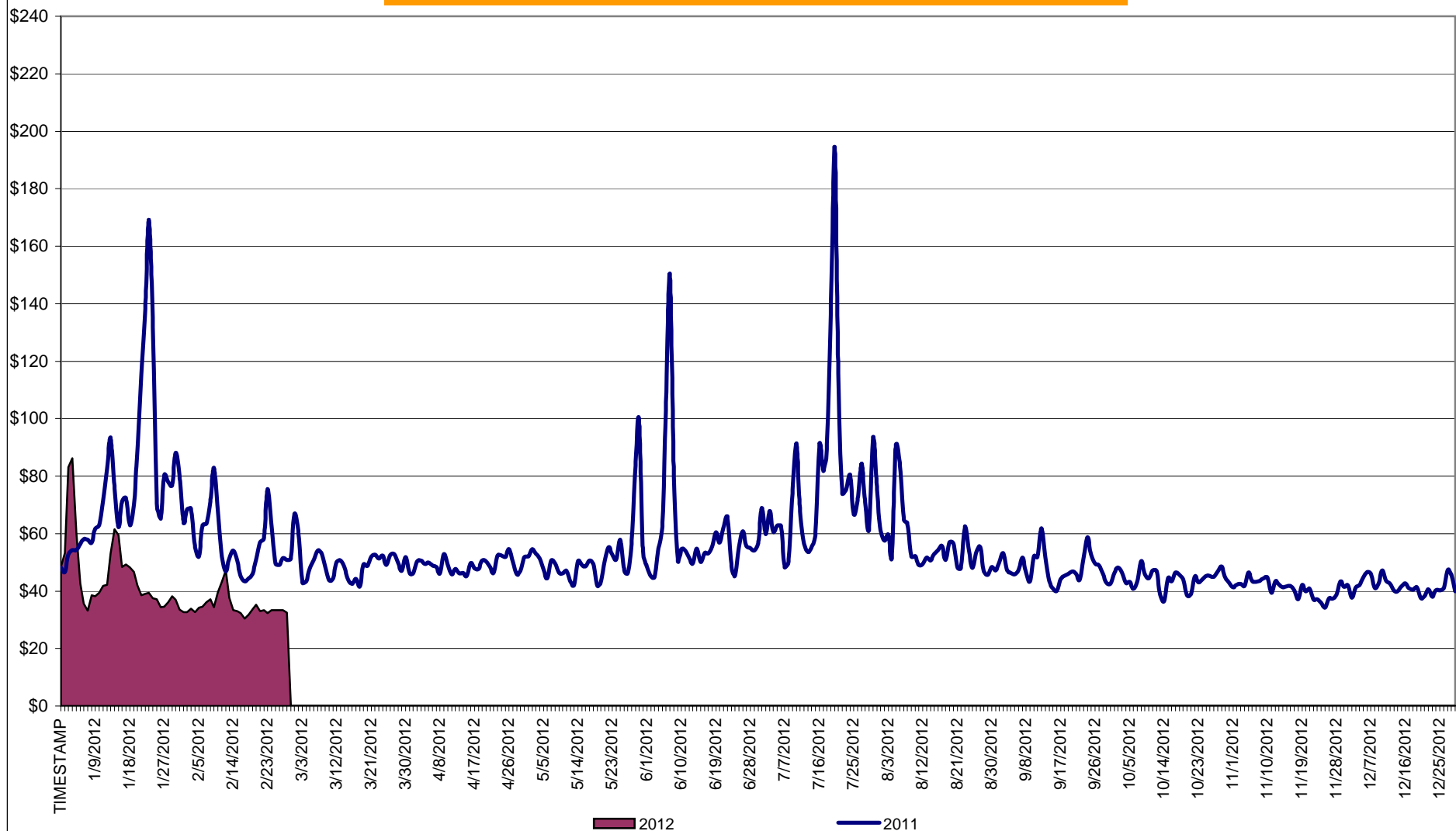
- **LBMP for February is \$32.44/MWh, down from \$44.00/MWh in January 2012.**
 - Day Ahead and Real Time Load Weighted LBMPs are down compared to January 2012.
- **Average monthly year-to-date cost of \$41.05/MWh, a decrease from the previous month, \$46.67/MWh.**
- **Average daily sendout is 431 GWh/day in February; down from 443 GWh/day in January 2012 and lower than 447 GWh/day in February 2011.**
- **Natural gas is down while distillate prices are up compared to the previous month.**
 - Natural Gas is \$3.15/MMBtu, down from \$5.09/MMBtu in January.
 - Kerosene is \$24.43/MMBtu, up from \$23.46/MMBtu in January.
 - No. 2 Fuel Oil is \$22.75/MMBtu, up from \$21.62/MMBtu in January.
 - No. 6 Fuel Oil is \$19.86/MMBtu, up from \$18.61/MMBtu in January.
- **Uplift per MWh is lower compared to the previous month.**
 - Uplift (not including NYISO cost of operations) is \$0.13/MWh, lower than \$0.36/MWh in January.
 - The TSA Share is \$0.00/MWh
 - The Local Reliability Share is \$0.04/MWh
 - The Other Share is \$0.09/MWh
 - Total uplift (Schedule 1 components including NYISO Cost of Operations) is lower compared to January.

Daily NYISO Average Cost/MWh (Energy & Ancillary Services)*

2011 Annual Average \$56.55/MWh

February 2011YTD Average \$68.82/MWh

February 2012YTD Average \$41.05/MWh



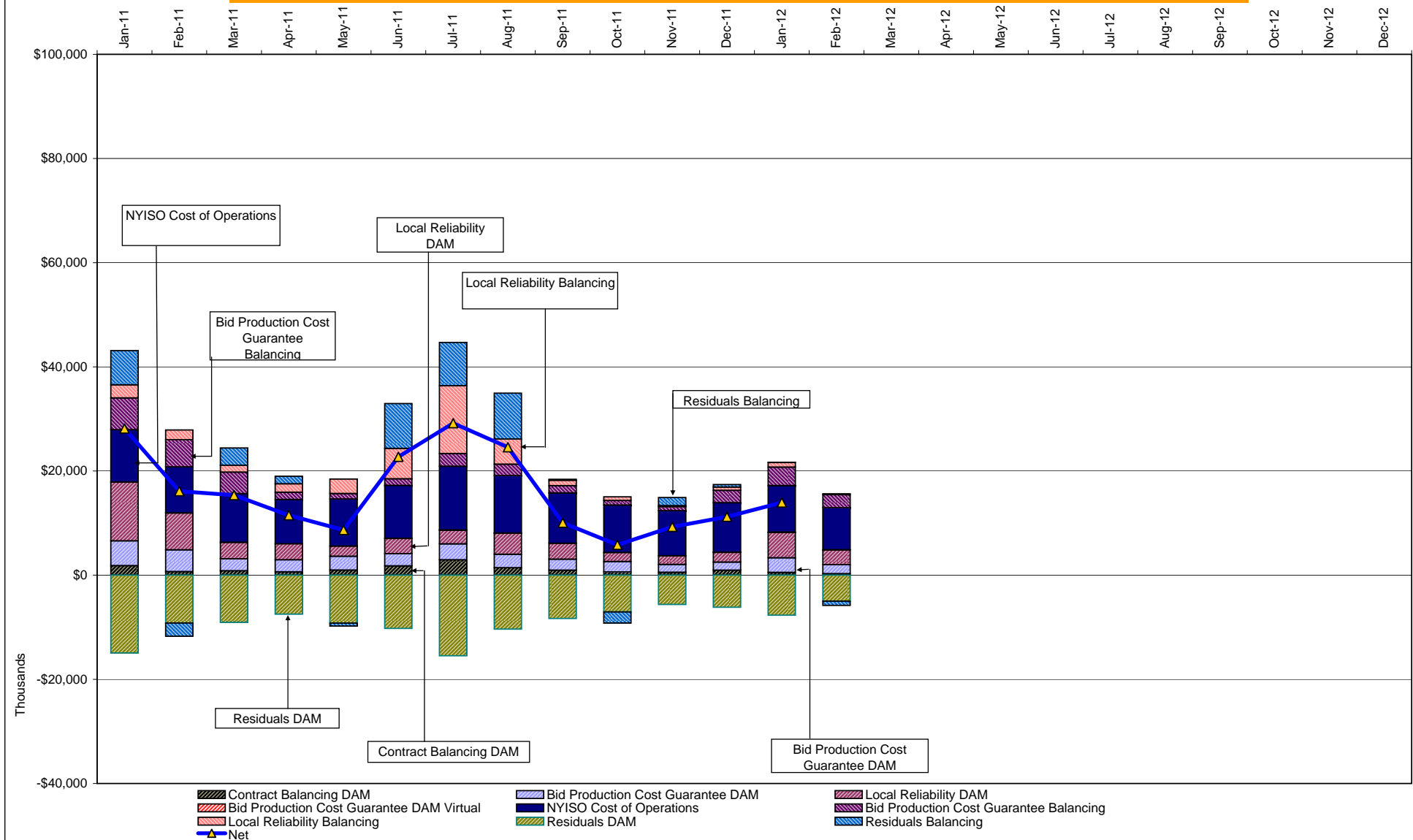
* Excludes ICAP payments.

NYISO Average Cost/MWh (Energy and Ancillary Services) *
from the LBMP Customer point of view

2012	<u>January</u>	<u>February</u>	<u>March</u>	<u>April</u>	<u>May</u>	<u>June</u>	<u>July</u>	<u>August</u>	<u>September</u>	<u>October</u>	<u>November</u>	<u>December</u>
LBMP	44.00	32.44										
NTAC	0.85	0.80										
Reserve	0.35	0.25										
Regulation	0.10	0.08										
NYISO Cost of Operations	0.64	0.64										
Uplift	0.36	0.13										
Uplift: TSA Share	-	-										
Uplift: Local Reliability Share	0.15	0.04										
Uplift: Other Share	0.21	0.09										
Voltage Support and Black Start	0.37	0.37										
Avg Monthly Cost	46.67	34.72										
 Avg YTD Cost	 46.67	 41.05										
 2011	 <u>January</u>	 <u>February</u>	 <u>March</u>	 <u>April</u>	 <u>May</u>	 <u>June</u>	 <u>July</u>	 <u>August</u>	 <u>September</u>	 <u>October</u>	 <u>November</u>	 <u>December</u>
LBMP	74.91	55.60	46.98	46.44	48.49	60.33	75.76	56.04	46.86	42.48	38.97	39.73
NTAC	0.62	0.75	0.86	0.81	1.13	1.22	0.66	0.60	0.43	0.56	0.62	0.69
Reserve	0.44	0.50	0.41	0.43	0.48	0.28	0.28	0.13	0.25	0.41	0.26	0.28
Regulation	0.20	0.18	0.15	0.12	0.10	0.15	0.12	0.09	0.08	0.09	0.08	0.09
NYISO Cost of Operations	0.70	0.70	0.70	0.70	0.70	0.70	0.70	0.70	0.70	0.70	0.70	0.70
Uplift	1.26	0.58	0.45	0.25	(0.02)	0.94	1.01	0.89	0.03	(0.27)	0.05	0.12
Uplift: TSA Share	-	-	-	0.01	-	0.30	0.08	0.28	0.00	-	-	-
Uplift: Local Reliability Share	0.62	0.32	0.13	0.10	(0.01)	0.36	0.54	0.32	0.01	(0.15)	0.01	0.03
Uplift: Other Share	0.65	0.26	0.32	0.14	(0.01)	0.28	0.39	0.29	0.01	(0.11)	0.04	0.10
Voltage Support and Black Start	0.37	0.37	0.37	0.37	0.37	0.37	0.37	0.37	0.37	0.37	0.37	0.37
Avg Monthly Cost	78.50	58.69	49.92	49.12	51.24	64.19	79.30	59.13	48.71	44.36	41.05	41.98
 Avg YTD Cost	 78.50	 68.82	 62.36	 59.15	 57.53	 58.81	 62.86	 62.29	 60.78	 59.29	 57.86	 56.55

* Excludes ICAP payments.

NYISO Dollar Flows - Uplift- OATT Schedule 1 components - Data through February 29, 2012



DAM Contract Balancing amounts are for payments made to generating units to make them whole for being dispatched below their Day-Ahead schedule, as a result of out-of-merit dispatches.

DAM Bid Production Cost Guarantees for Virtual Transactions are included in the chart and are shown from the inception of Virtual Transactions. These values are small and cannot be identified on the chart.

DAM residuals consist of both energy and loss revenue collections and payments. By design, there is a net over collection of revenues due to the difference between the marginal losses paid to generation and the average losses charged to loads.

NYISO Markets Transactions

2012	<u>January</u>	<u>February</u>	<u>March</u>	<u>April</u>	<u>May</u>	<u>June</u>	<u>July</u>	<u>August</u>	<u>September</u>	<u>October</u>	<u>November</u>	<u>December</u>
<u>Day Ahead Market MWh</u>	14,877,279	13,473,786										
DAM LSE Internal LBMP Energy Sales	58%	57%										
DAM External TC LBMP Energy Sales	1%	1%										
DAM Bilateral - Internal Bilaterals	38%	40%										
DAM Bilateral - Import/Non-LBMP Market Bilaterals	0%	0%										
DAM Bilateral - Export/Non-LBMP Market Bilaterals	1%	2%										
DAM Bilateral - Wheel Through Bilaterals	1%	0%										
<u>Balancing Energy Market MWh</u>	-878,258	-814,169										
Balancing Energy LSE Internal LBMP Energy Sales	-110%	-111%										
Balancing Energy External TC LBMP Energy Sales	9%	7%										
Balancing Energy Bilateral - Internal Bilaterals	1%	1%										
Balancing Energy Bilateral - Import/Non-LBMP Market Bilaterals	0%	0%										
Balancing Energy Bilateral - Export/Non-LBMP Market Bilaterals	4%	3%										
Balancing Energy Bilateral - Wheel Through Bilaterals	-3%	0%										
<u>Transactions Summary</u>												
LBMP	57%	56%										
Internal Bilaterals	41%	42%										
Import Bilaterals	0%	0%										
Export Bilaterals	2%	2%										
Wheels Through	1%	0%										
<u>Market Share of Total Load</u>												
Day Ahead Market	106.3%	106.4%										
Balancing Energy +	-6.3%	-6.4%										
Total MWh	13,999,021	12,659,617										
Average Daily Energy Sendout/Month GWh	443	431										

2011	<u>January</u>	<u>February</u>	<u>March</u>	<u>April</u>	<u>May</u>	<u>June</u>	<u>July</u>	<u>August</u>	<u>September</u>	<u>October</u>	<u>November</u>	<u>December</u>
<u>Day Ahead Market MWh</u>	14,146,283	12,514,435	13,164,026	12,191,562	12,809,240	14,520,490	17,296,367	15,872,137	14,052,940	13,263,167	12,710,654	14,300,553
DAM LSE Internal LBMP Energy Sales	49%	54%	53%	55%	55%	57%	60%	62%	59%	54%	55%	59%
DAM External TC LBMP Energy Sales	1%	1%	2%	2%	1%	1%	2%	1%	1%	4%	2%	1%
DAM Bilateral - Internal Bilaterals	42%	43%	43%	41%	41%	39%	36%	35%	39%	41%	41%	37%
DAM Bilateral - Import/Non-LBMP Market Bilaterals	5%	0%	0%	0%	0%	0%	0%	0%	0%	0%	0%	0%
DAM Bilateral - Export/Non-LBMP Market Bilaterals	1%	1%	2%	2%	2%	1%	1%	1%	1%	2%	2%	1%
DAM Bilateral - Wheel Through Bilaterals	1%	1%	1%	0%	1%	1%	1%	1%	1%	0%	0%	1%
<u>Balancing Energy Market MWh</u>	311,996	210,141	250,346	35,939	192,443	44,238	221,521	-31,814	-204,604	-204,312	-281,379	-688,007
Balancing Energy LSE Internal LBMP Energy Sales	28%	24%	39%	-226%	40%	-141%	29%	-372%	-147%	-181%	-129%	-115%
Balancing Energy External TC LBMP Energy Sales	48%	50%	50%	197%	39%	271%	77%	328%	53%	59%	21%	13%
Balancing Energy Bilateral - Internal Bilaterals	15%	7%	8%	47%	14%	37%	0%	-1%	5%	11%	0%	0%
Balancing Energy Bilateral - Import/Non-LBMP Market Bilaterals	0%	0%	0%	0%	0%	0%	0%	0%	0%	0%	0%	0%
Balancing Energy Bilateral - Export/Non-LBMP Market Bilaterals	6%	14%	13%	83%	10%	32%	6%	39%	8%	10%	10%	4%
Balancing Energy Bilateral - Wheel Through Bilaterals	3%	5%	-10%	-1%	-2%	-100%	-12%	-94%	-18%	1%	-2%	-2%
<u>Transactions Summary</u>												
LBMP	51%	55%	55%	57%	57%	59%	63%	63%	59%	56%	56%	58%
Internal Bilaterals	42%	42%	42%	41%	41%	39%	36%	36%	39%	42%	42%	39%
Import Bilaterals	5%	0%	0%	0%	0%	0%	0%	0%	0%	0%	0%	0%
Export Bilaterals	2%	2%	2%	2%	2%	1%	1%	1%	1%	2%	2%	2%
Wheels Through	1%	1%	1%	0%	1%	1%	1%	1%	0%	0%	0%	1%
<u>Market Share of Total Load</u>												
Day Ahead Market	97.8%	98.3%	98.1%	99.7%	98.5%	99.7%	98.7%	100.2%	101.5%	101.6%	102.3%	105.1%
Balancing Energy +	2.2%	1.7%	1.9%	0.3%	1.5%	0.3%	1.3%	-0.2%	-1.5%	-1.6%	-2.3%	-5.1%
Total MWh	14,458,279	12,724,575	13,414,372	12,227,501	13,001,683	14,564,728	17,517,888	15,840,323	13,848,336	13,058,855	12,429,275	13,612,546
Average Daily Energy Sendout/Month GWh	457	447	422	398	411	479	555	505	456	403	408	430

+ Balancing Energy: Load(MW) purchased at Real Time LBMP.

* The signs for the detail section intuitively reflect the direction of power flow eliminating the use of double negatives when Balancing Energy is negative.

Notes: Percent totals may not equal 100% due to rounding.
Virtual Transactions are not reflected in this chart.

NYISO Markets 2012 Energy Statistics

	<u>January</u>	<u>February</u>	<u>March</u>	<u>April</u>	<u>May</u>	<u>June</u>	<u>July</u>	<u>August</u>	<u>September</u>	<u>October</u>	<u>November</u>	<u>December</u>
<u>DAY AHEAD LBMP</u>												
Price *	\$40.91	\$31.15										
Standard Deviation	\$15.62	\$6.23										
Load Weighted Price **	\$42.20	\$31.73										
<u>RTC LBMP</u>												
Price *	\$37.93	\$30.31										
Standard Deviation	\$23.43	\$7.26										
Load Weighted Price **	\$39.19	\$30.75										
<u>REAL TIME LBMP</u>												
Price *	\$37.35	\$30.54										
Standard Deviation	\$23.75	\$9.77										
Load Weighted Price **	\$38.88	\$31.14										
Average Daily Energy Sendout/Month GWh	443	431										

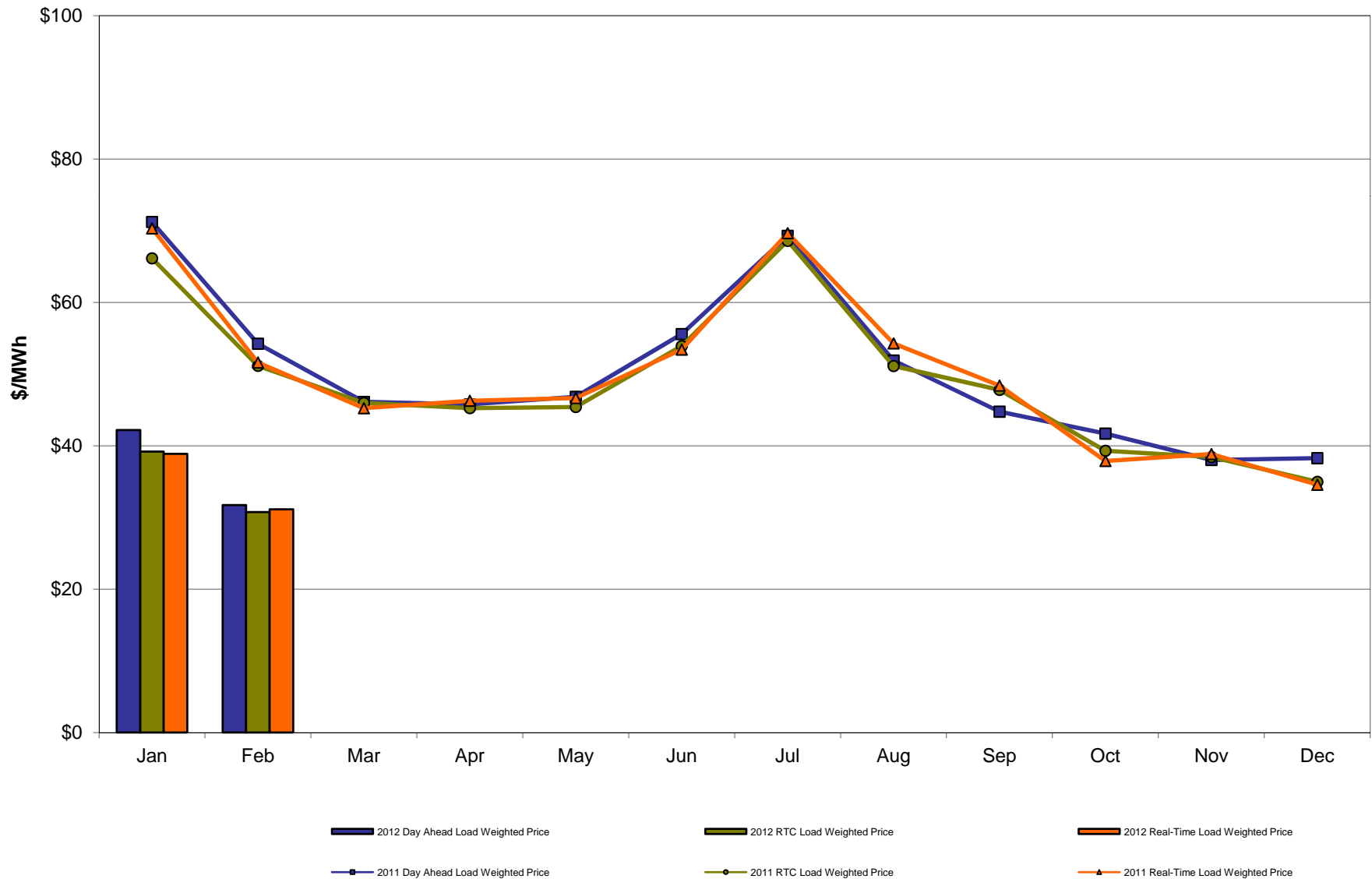
NYISO Markets 2011 Energy Statistics

	<u>January</u>	<u>February</u>	<u>March</u>	<u>April</u>	<u>May</u>	<u>June</u>	<u>July</u>	<u>August</u>	<u>September</u>	<u>October</u>	<u>November</u>	<u>December</u>
<u>DAY AHEAD LBMP</u>												
Price *	\$69.03	\$52.87	\$45.20	\$44.80	\$45.20	\$52.26	\$64.60	\$49.59	\$43.28	\$40.38	\$37.12	\$37.31
Standard Deviation	\$30.78	\$14.77	\$9.06	\$8.22	\$11.77	\$26.24	\$34.99	\$16.62	\$10.26	\$9.30	\$7.64	\$9.13
Load Weighted Price **	\$71.22	\$54.24	\$46.13	\$45.77	\$46.83	\$55.58	\$69.28	\$51.90	\$44.76	\$41.70	\$38.02	\$38.27
<u>RTC LBMP</u>												
Price *	\$64.48	\$50.15	\$45.13	\$44.32	\$43.69	\$50.47	\$63.42	\$48.47	\$46.02	\$38.44	\$37.43	\$34.00
Standard Deviation	\$39.41	\$18.83	\$18.96	\$15.44	\$25.19	\$46.41	\$82.29	\$59.95	\$25.18	\$15.45	\$17.55	\$15.60
Load Weighted Price **	\$66.15	\$51.15	\$45.98	\$45.25	\$45.41	\$53.91	\$68.58	\$51.12	\$47.80	\$39.30	\$38.43	\$34.97
<u>REAL TIME LBMP</u>												
Price *	\$67.92	\$50.26	\$44.22	\$45.20	\$44.26	\$48.68	\$62.96	\$49.39	\$45.92	\$36.91	\$37.67	\$33.50
Standard Deviation	\$58.47	\$22.39	\$17.41	\$19.98	\$26.27	\$44.88	\$64.83	\$62.04	\$26.88	\$13.65	\$19.42	\$14.12
Load Weighted Price **	\$70.32	\$51.61	\$45.24	\$46.28	\$46.66	\$53.42	\$69.66	\$54.28	\$48.40	\$37.88	\$38.84	\$34.57
Average Daily Energy Sendout/Month GWh	457	447	422	398	411	479	555	505	456	402	408	430

* Average zonal load weighted prices.

** Average zonal load weighted prices, load weighted in each hour.

NYISO Monthly Average Internal LBMPs 2011- 2012

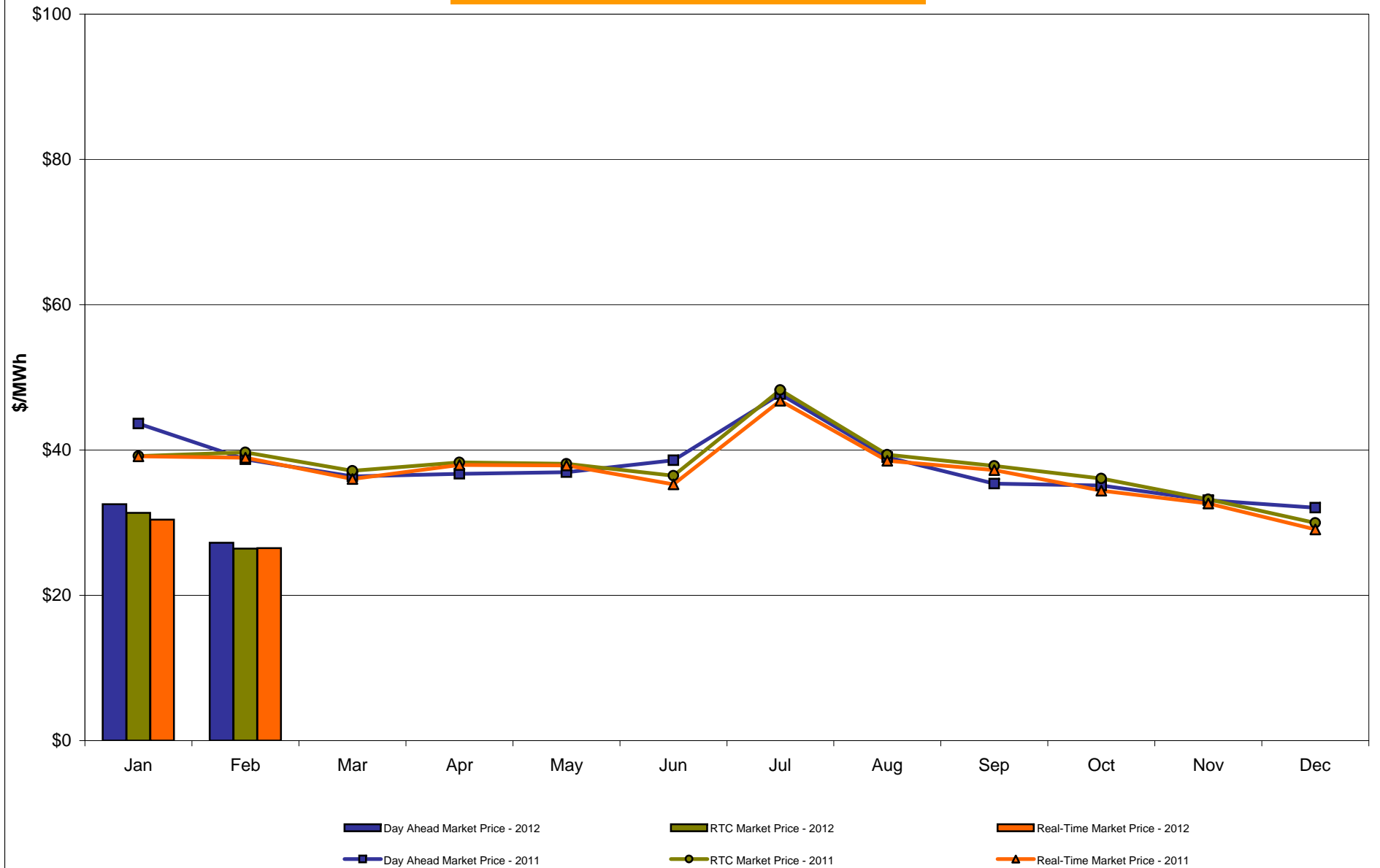


February 2012 Zonal LBMP Statistics for NYISO (\$/MWh)

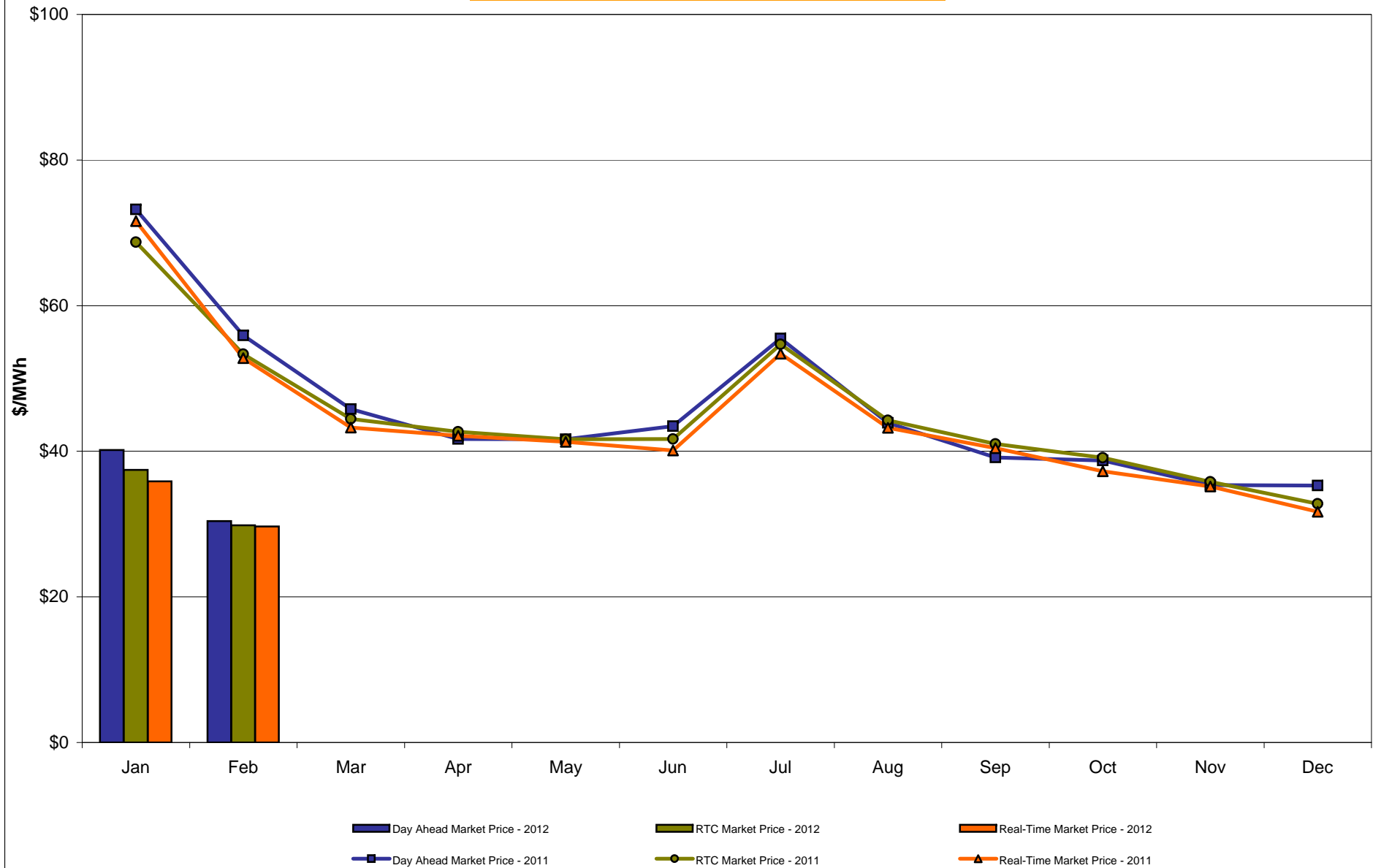
	<u>WEST</u> <u>Zone A</u>	<u>GENESEE</u> <u>Zone B</u>	<u>NORTH</u> <u>Zone D</u>	<u>CENTRAL</u> <u>Zone C</u>	<u>MOHAWK</u> <u>VALLEY</u> <u>Zone E</u>	<u>CAPITAL</u> <u>Zone F</u>	<u>HUDSON</u> <u>VALLEY</u> <u>Zone G</u>	<u>MILLWOOD</u> <u>Zone H</u>	<u>DUNWOODIE</u> <u>Zone I</u>	<u>NEW YORK</u> <u>CITY</u> <u>Zone J</u>	<u>LONG</u> <u>ISLAND</u> <u>Zone K</u>
<u>DAY AHEAD LBMP</u>											
Unweighted Price *	27.25	27.86	27.75	28.45	29.28	30.42	31.40	31.35	31.35	33.12	34.87
Standard Deviation	4.07	4.30	4.17	4.51	4.79	6.33	6.19	6.24	6.23	7.68	8.74
<u>RTC LBMP</u>											
Unweighted Price *	26.44	27.22	26.93	27.86	28.66	29.82	30.58	30.50	30.48	32.04	34.22
Standard Deviation	5.73	6.03	5.96	6.22	6.46	6.90	6.97	6.99	6.97	9.92	15.17
<u>REAL TIME LBMP</u>											
Unweighted Price *	26.48	27.25	26.93	27.88	28.66	29.68	30.48	30.40	30.38	32.11	36.21
Standard Deviation	7.70	8.03	7.89	8.25	8.55	8.82	9.09	9.11	9.09	12.19	28.09
	<u>ONTARIO</u> <u>IESO</u> <u>Zone O</u>	<u>HYDRO</u> <u>QUEBEC</u> <u>(Wheel)</u> <u>Zone M</u>	<u>HYDRO</u> <u>QUEBEC</u> <u>(Import/Export)</u> <u>Zone M</u>	<u>PJM</u> <u>Zone P</u>	<u>NEW</u> <u>ENGLAND</u> <u>Zone N</u>	<u>CROSS</u> <u>SOUND</u> <u>CABLE</u> <u>Controllable</u> <u>Line</u>	<u>NORTHPORT-</u> <u>NORWALK</u> <u>Controllable</u> <u>Line</u>	<u>NEPTUNE</u> <u>Controllable</u> <u>Line</u>	<u>LINDEN VFT</u> <u>Controllable</u> <u>Line</u>	<u>Dennison</u> <u>Controllable</u> <u>Line</u>	
<u>DAY AHEAD LBMP</u>											
Unweighted Price *	26.80	27.71	27.00	29.70	30.68	33.73	32.92	33.23	30.39	27.40	
Standard Deviation	3.85	4.13	3.47	5.29	6.19	7.83	7.36	7.65	5.17	3.94	
<u>RTC LBMP</u>											
Unweighted Price *	25.59	26.44	26.13	28.44	29.49	31.57	31.05	31.43	30.56	26.28	
Standard Deviation	3.64	3.98	4.31	4.25	4.83	10.50	10.27	10.44	12.23	3.94	
<u>REAL TIME LBMP</u>											
Unweighted Price *	26.25	26.98	26.54	29.04	30.07	34.04	32.46	33.87	29.42	26.84	
Standard Deviation	7.52	7.90	7.38	8.48	8.90	26.88	24.02	26.89	40.71	7.64	

* Straight LBMP averages

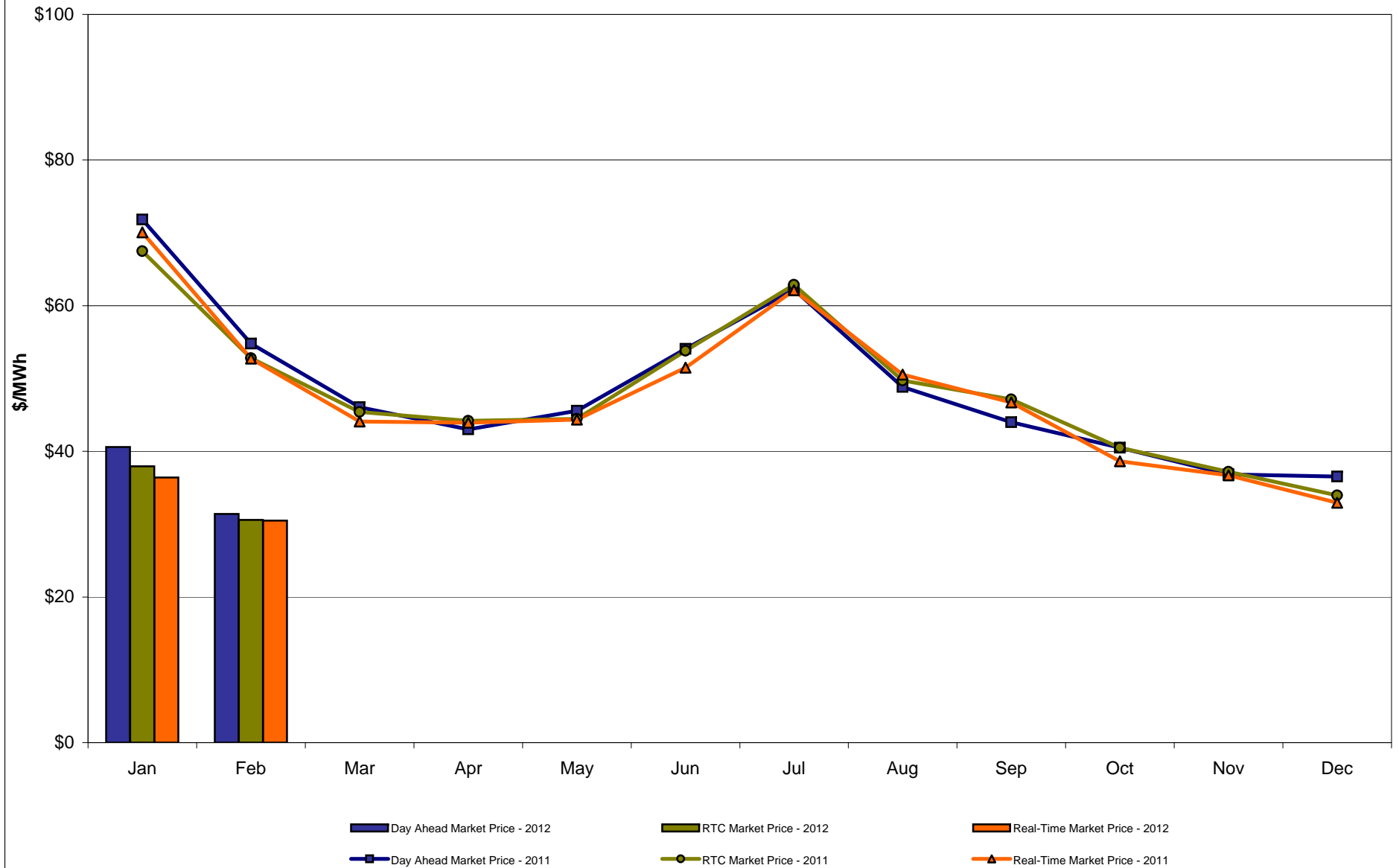
West Zone A **Monthly Average LBMP Prices 2011 - 2012**



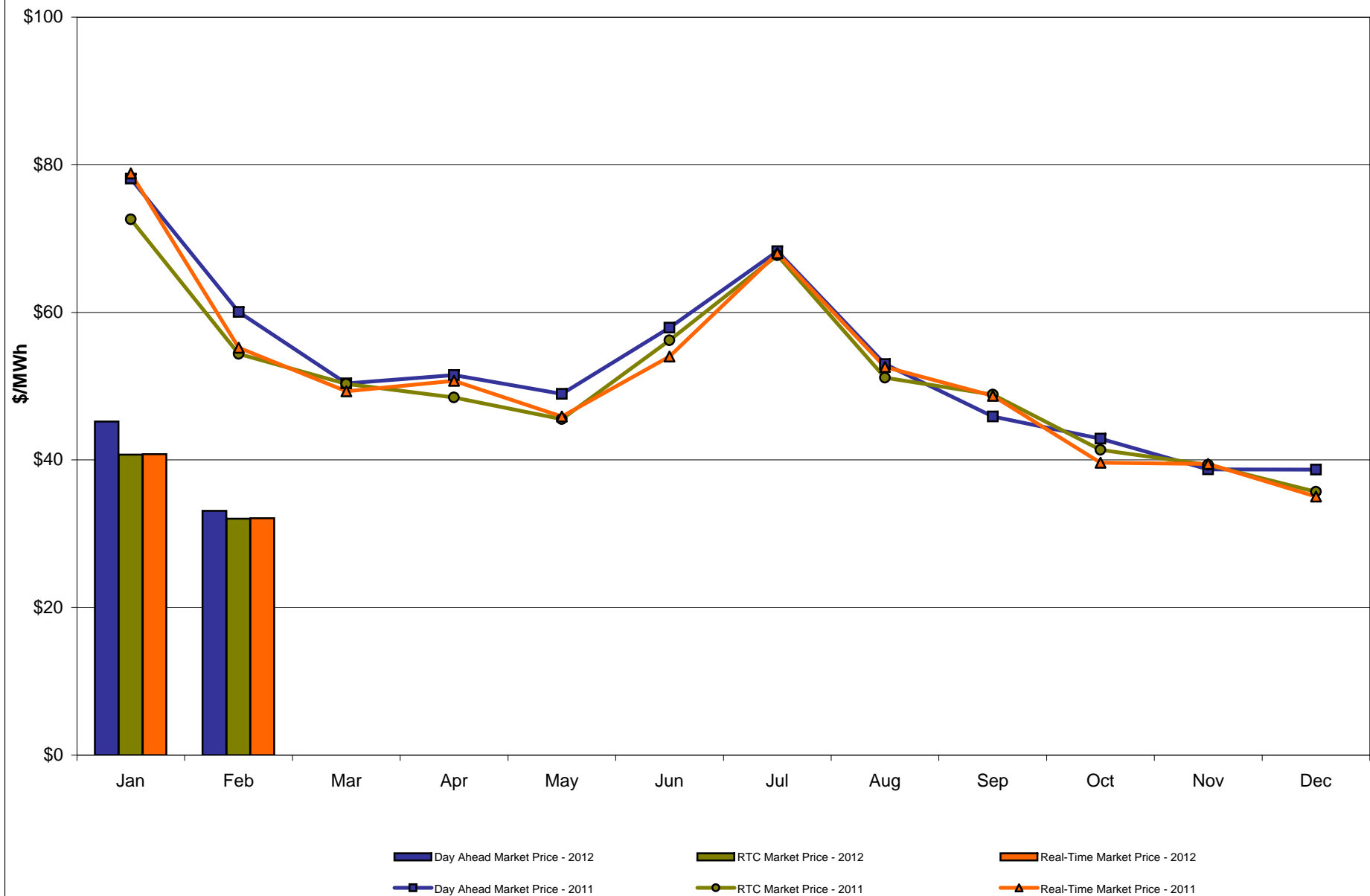
Capital Zone F **Monthly Average LBMP Prices 2011 - 2012**



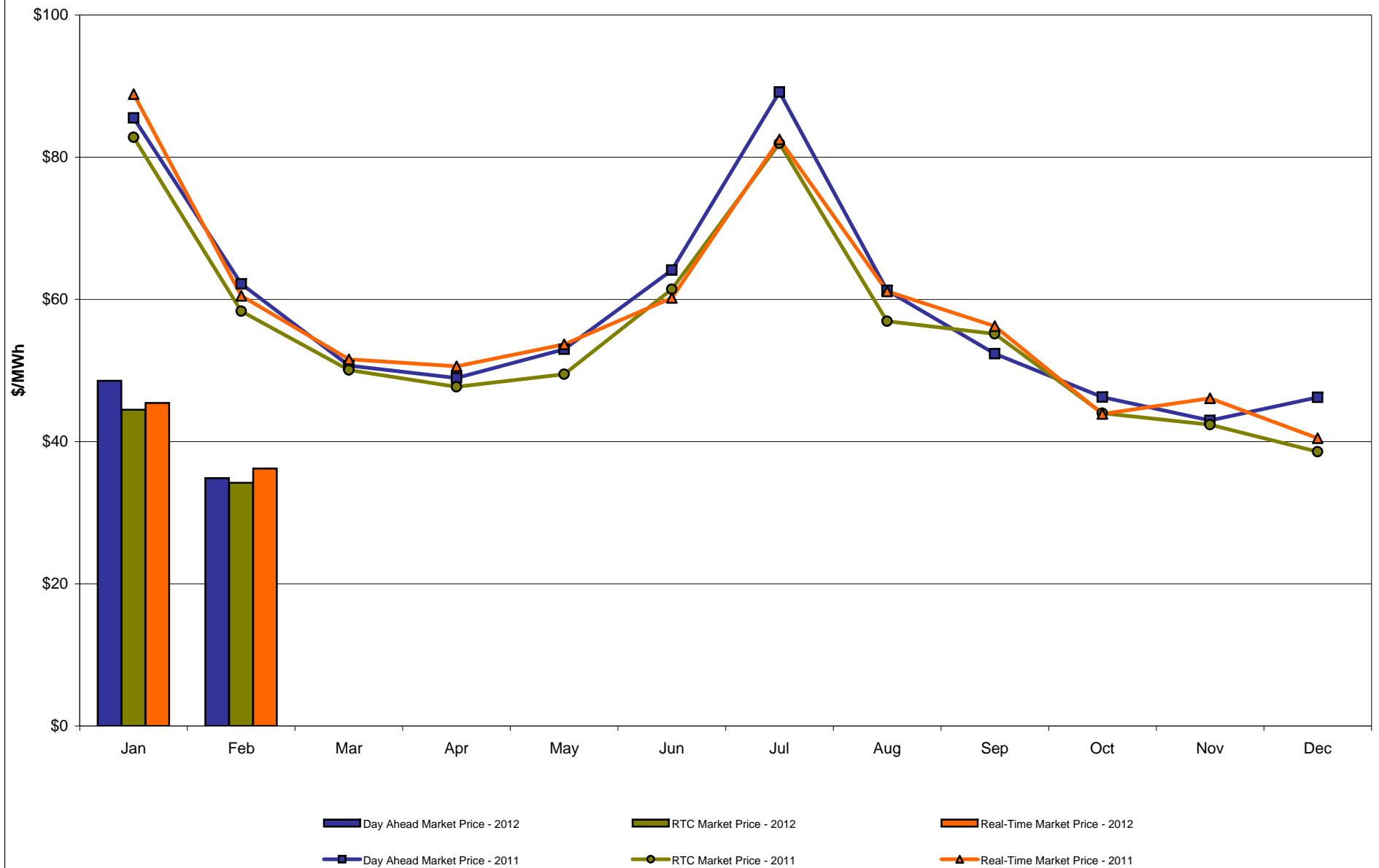
Hudson Valley Zone G Monthly Average LBMP Prices 2011 - 2012



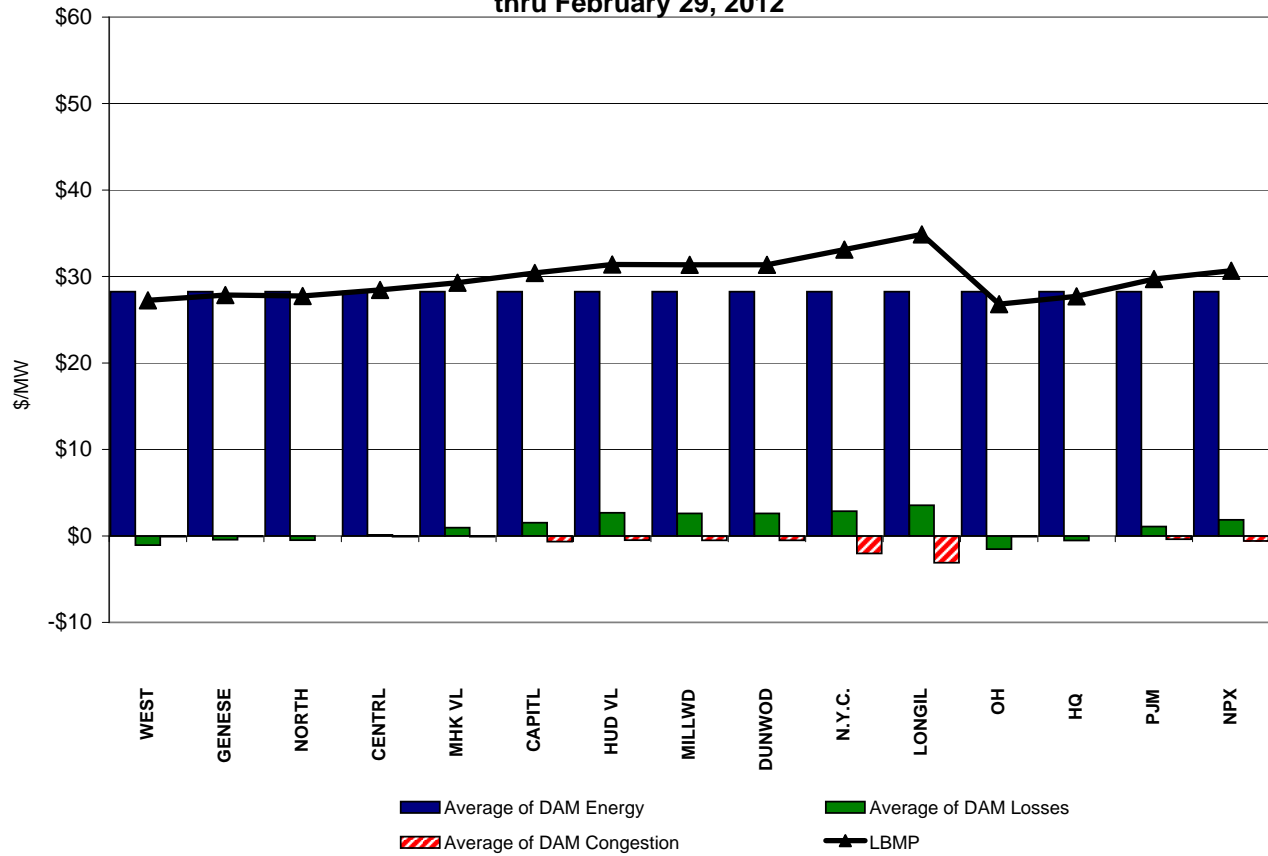
NYC Zone J Monthly Average LBMP Prices 2011 - 2012



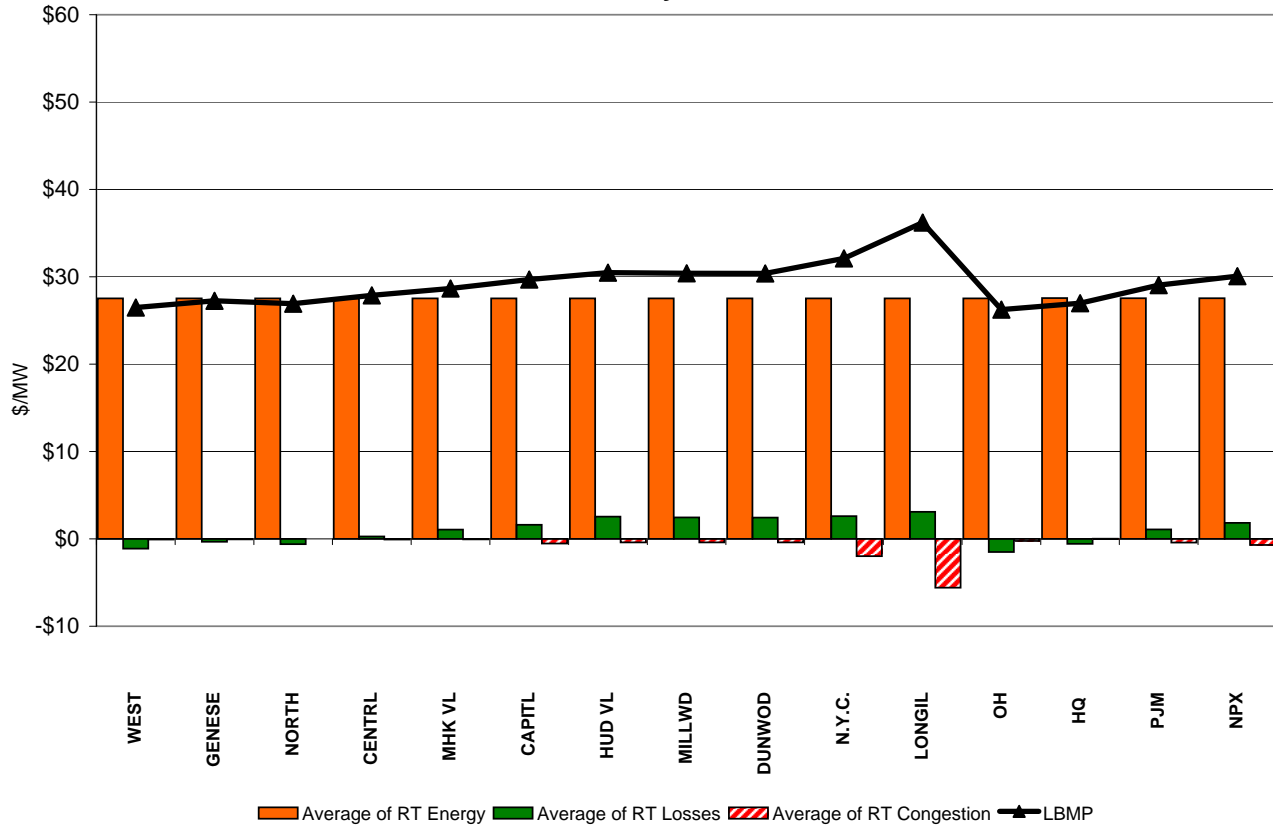
Long Island Zone K Monthly Average LBMP Prices 2011 - 2012



**DAM Zonal Unweighted Monthly Average LBMP Components
thru February 29, 2012**

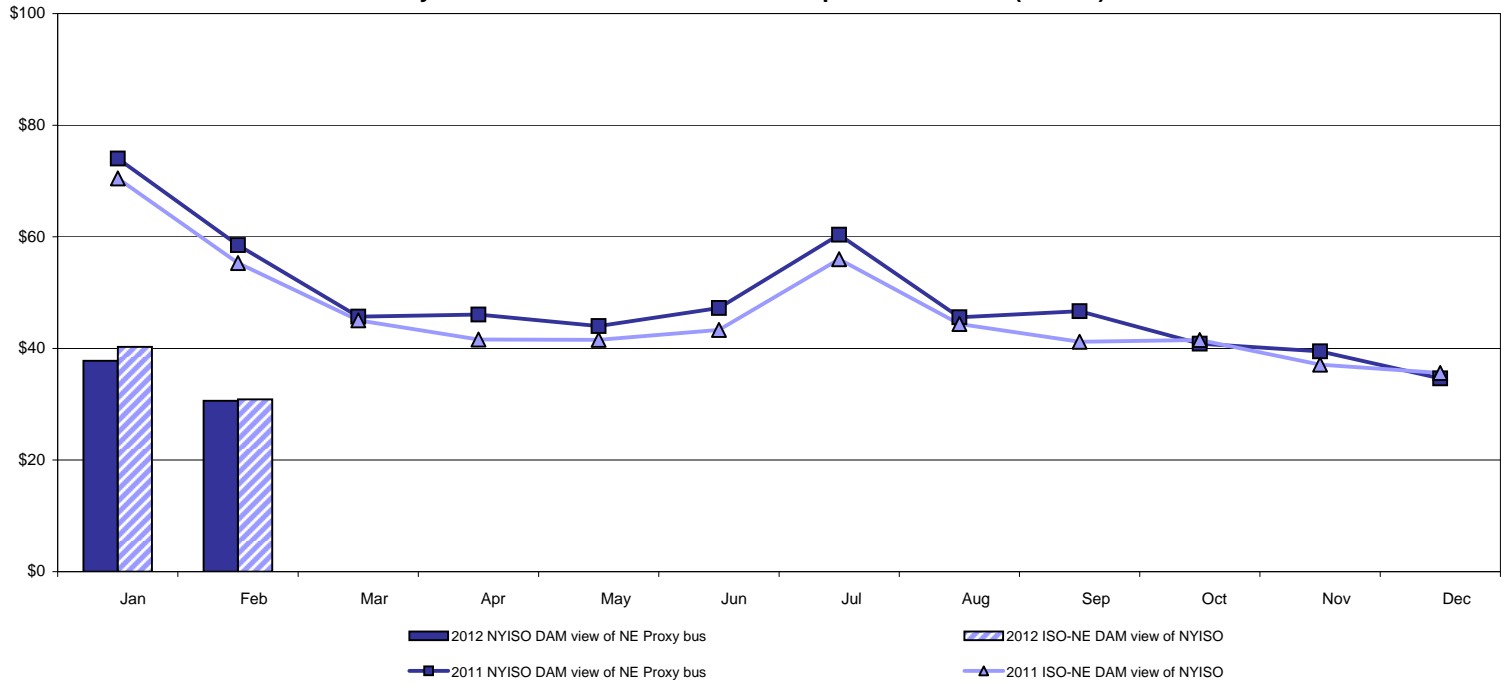


**RT Zonal Unweighted Monthly Average LBMP Components
thru February 29, 2012**

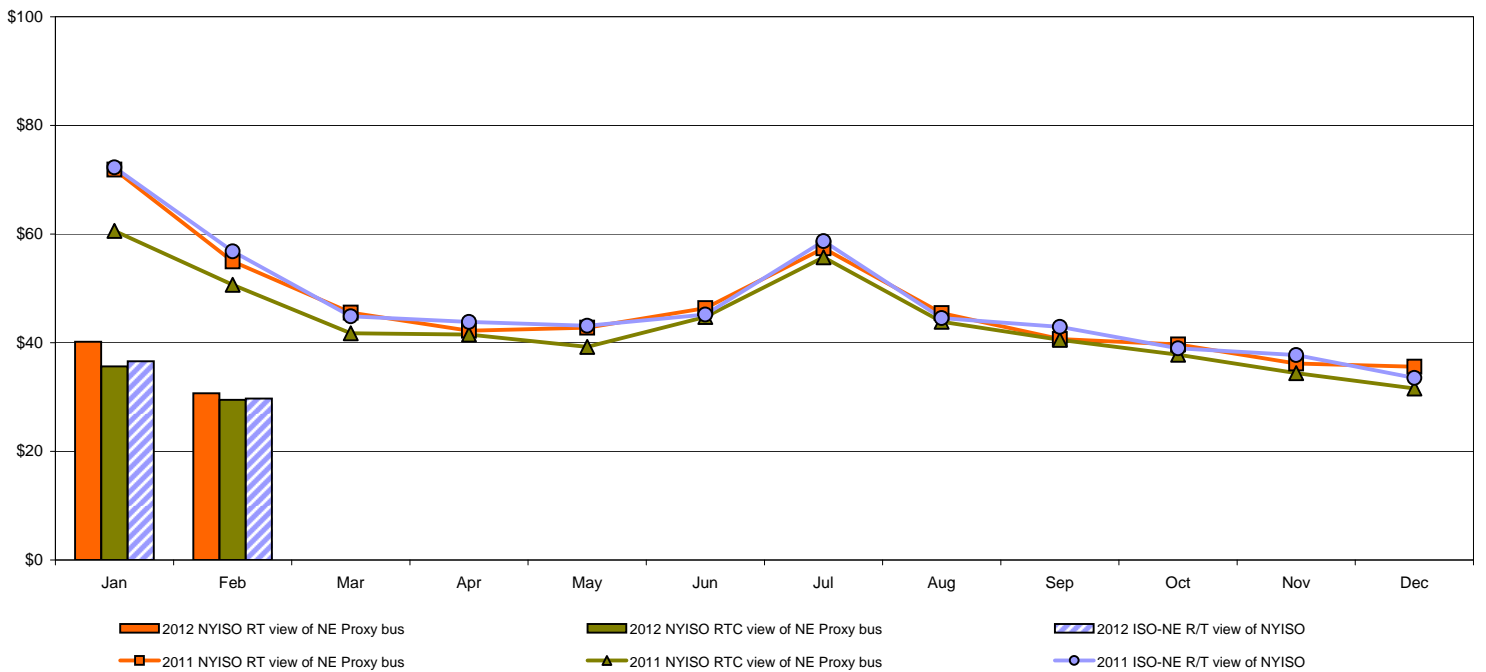


External Comparison ISO-New England

Day Ahead Market External Zone Comparison: ISO-NE (\$/MWh)

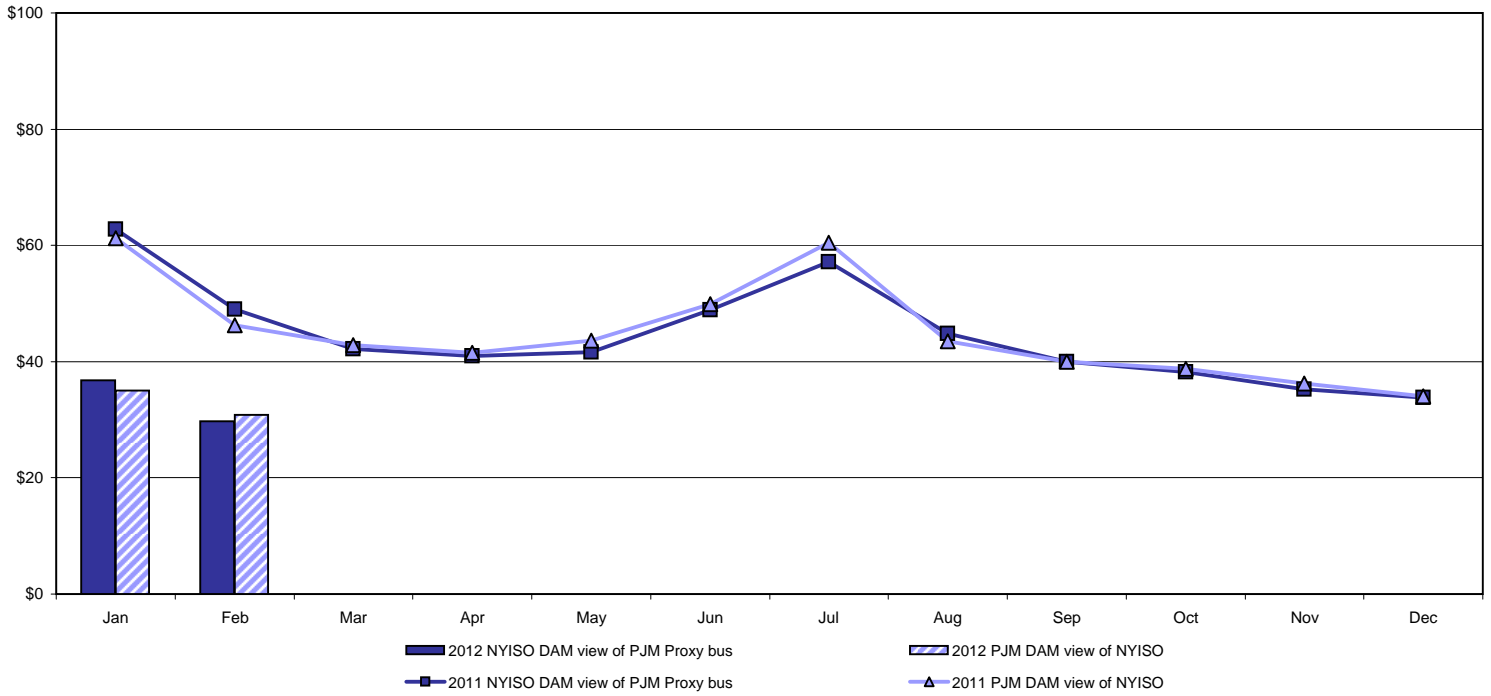


Real Time Market External Zone Comparison: ISO-NE (\$/MWh)

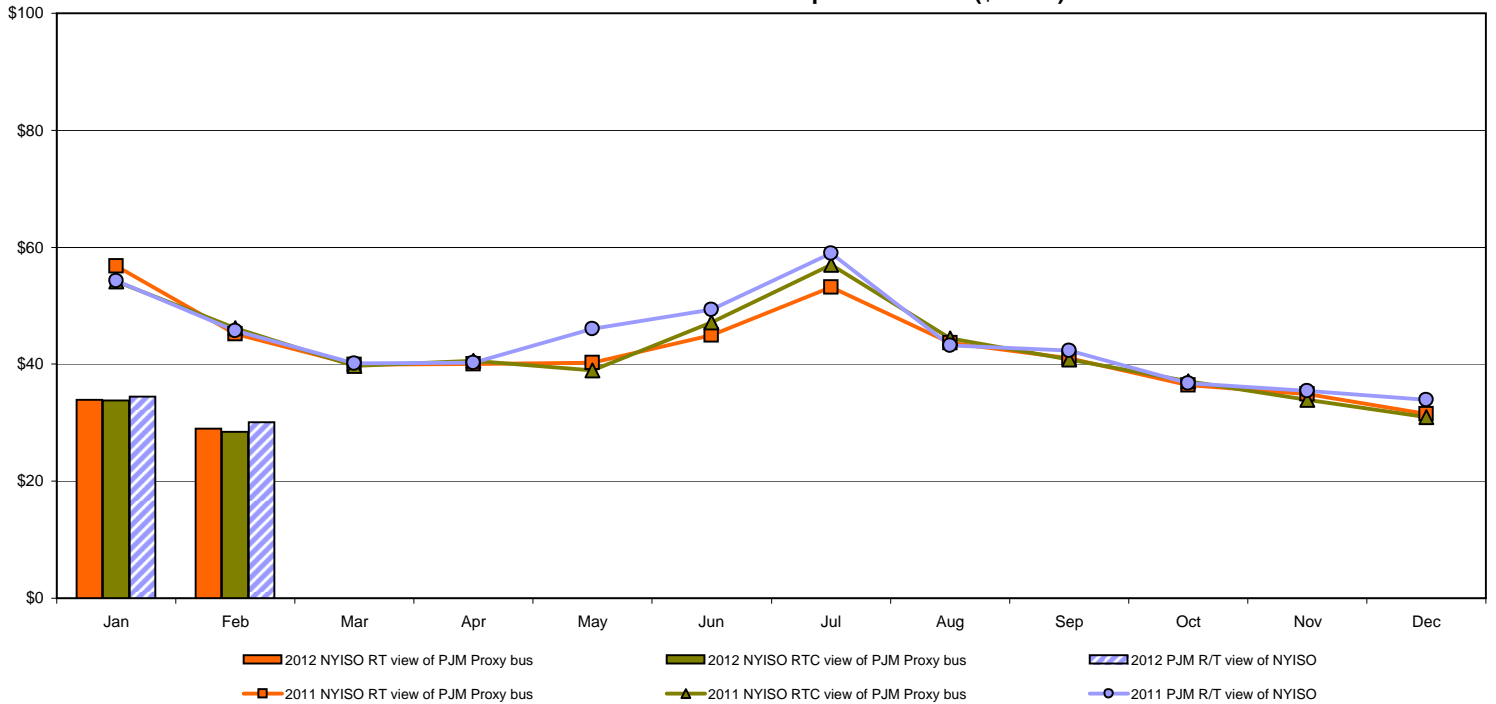


External Comparison PJM

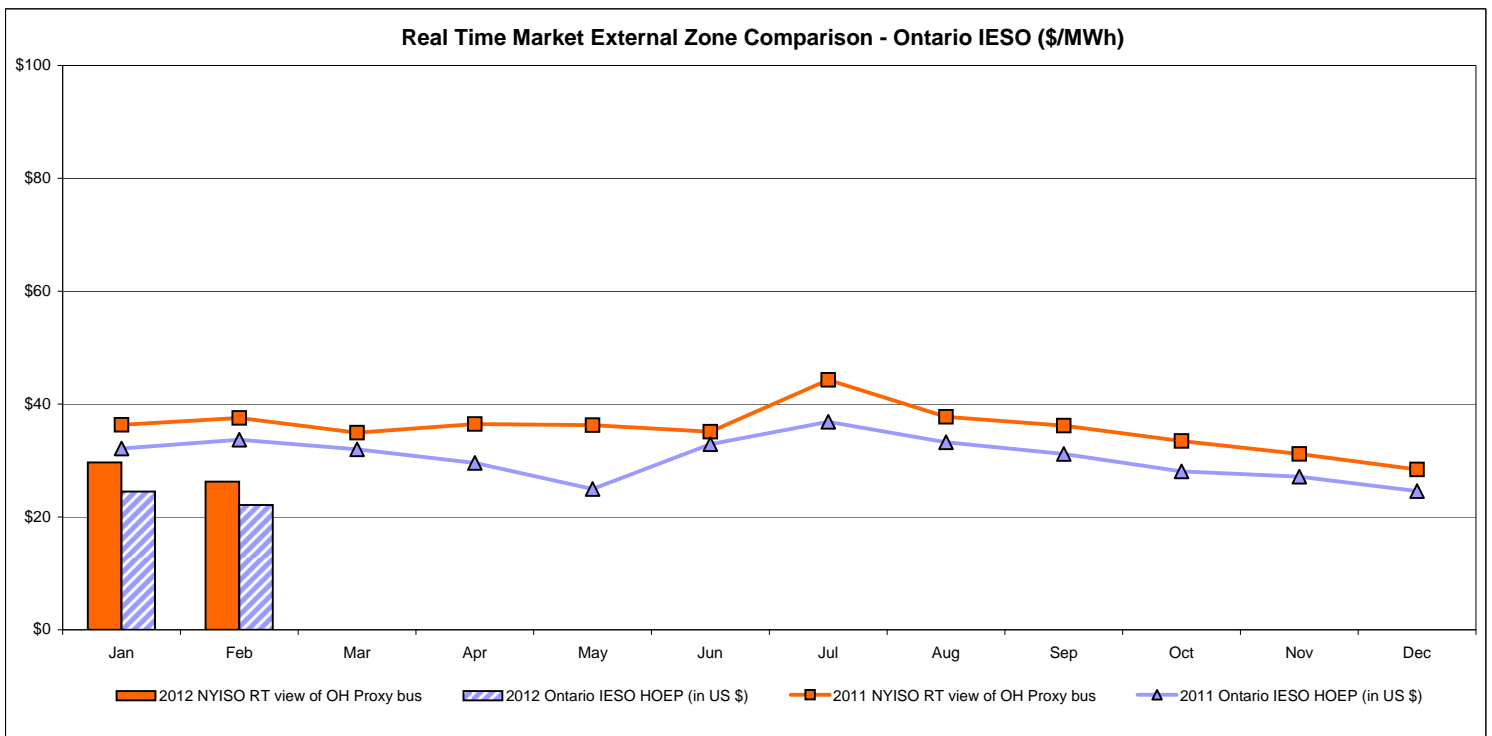
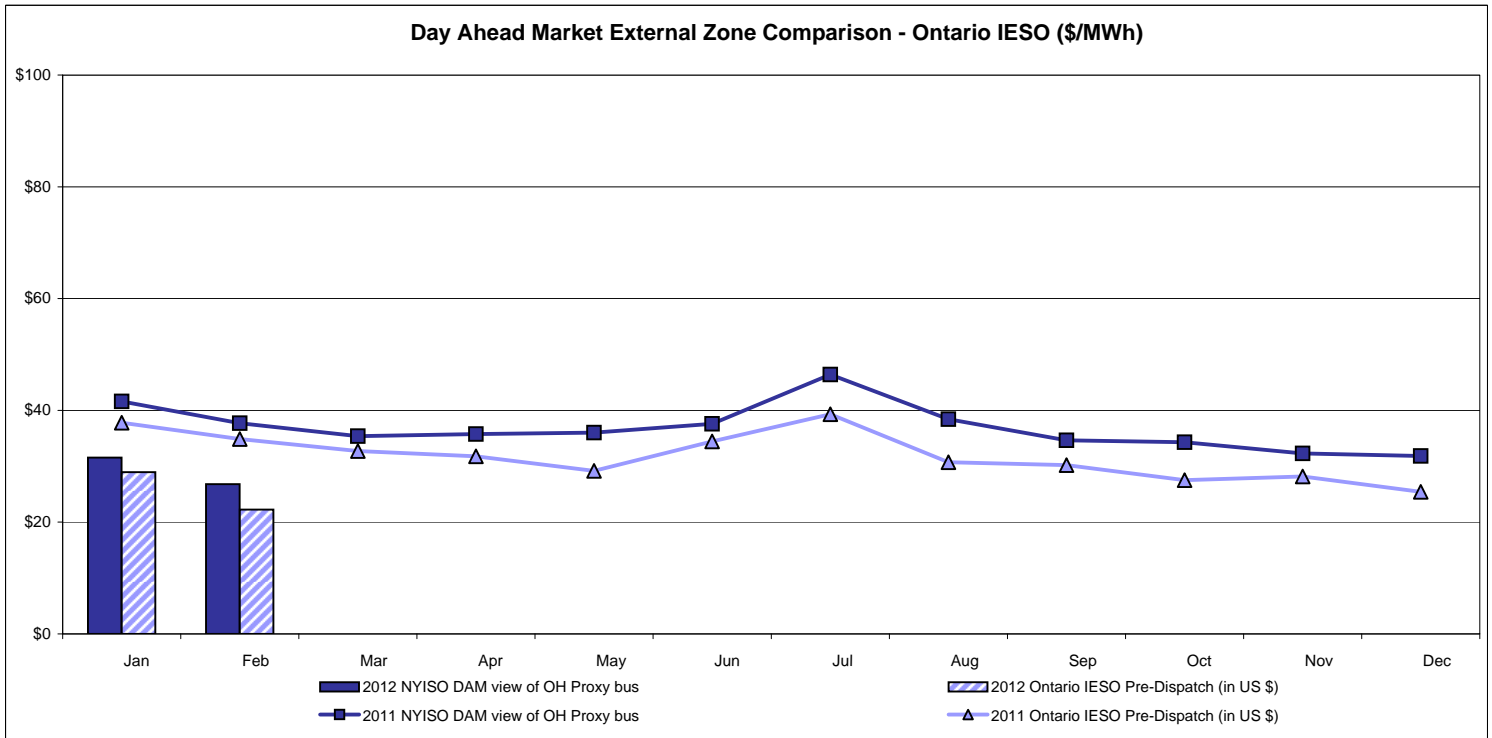
Day Ahead Market External Zone Comparison - PJM (\$/MWh)



Real Time Market External Zone Comparison - PJM (\$/MWh)

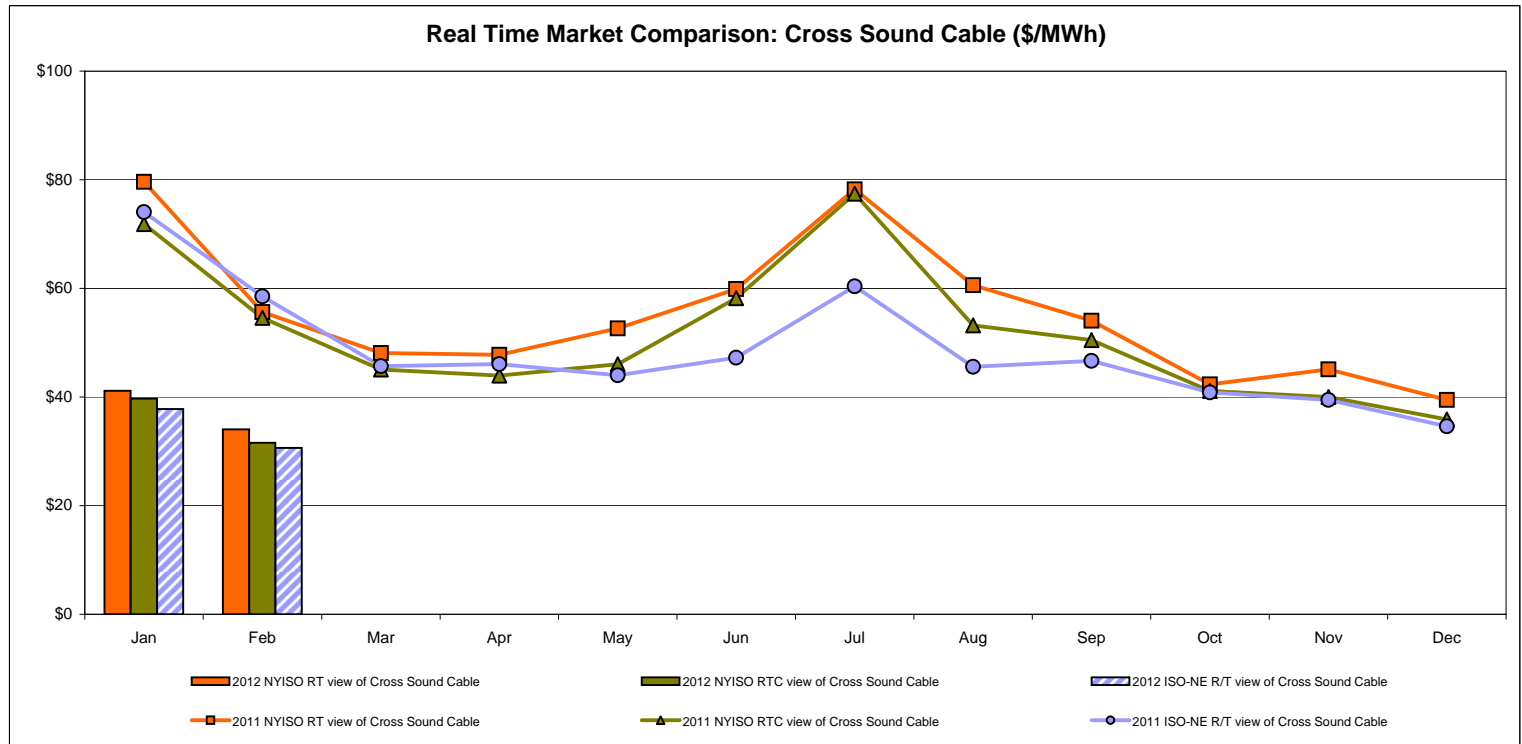
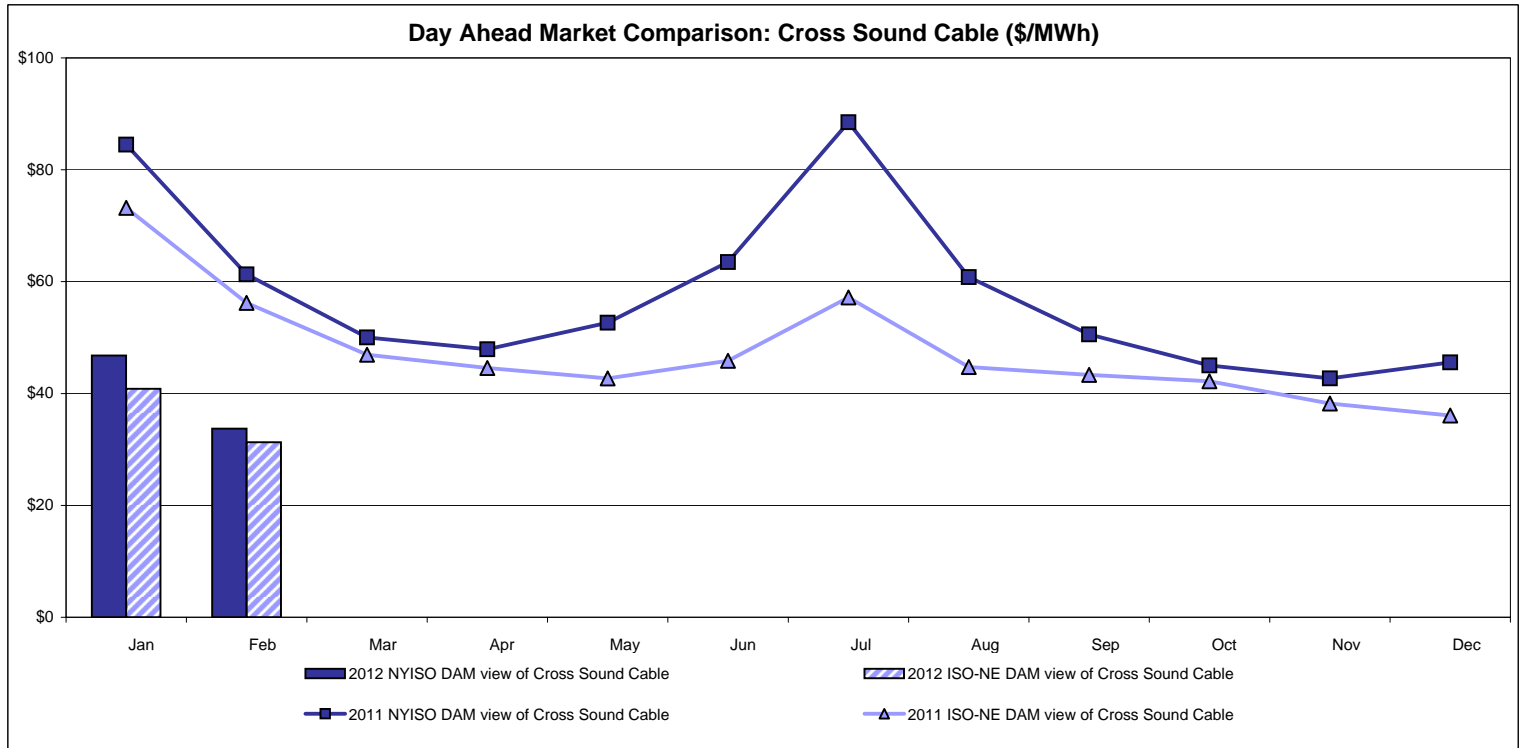


External Comparison Ontario IESO



Notes: Exchange factor used for February 2012 was 1.00 to US \$
 HOEP: Hourly Ontario Energy Price
 Pre-Dispatch: Projected Energy Price

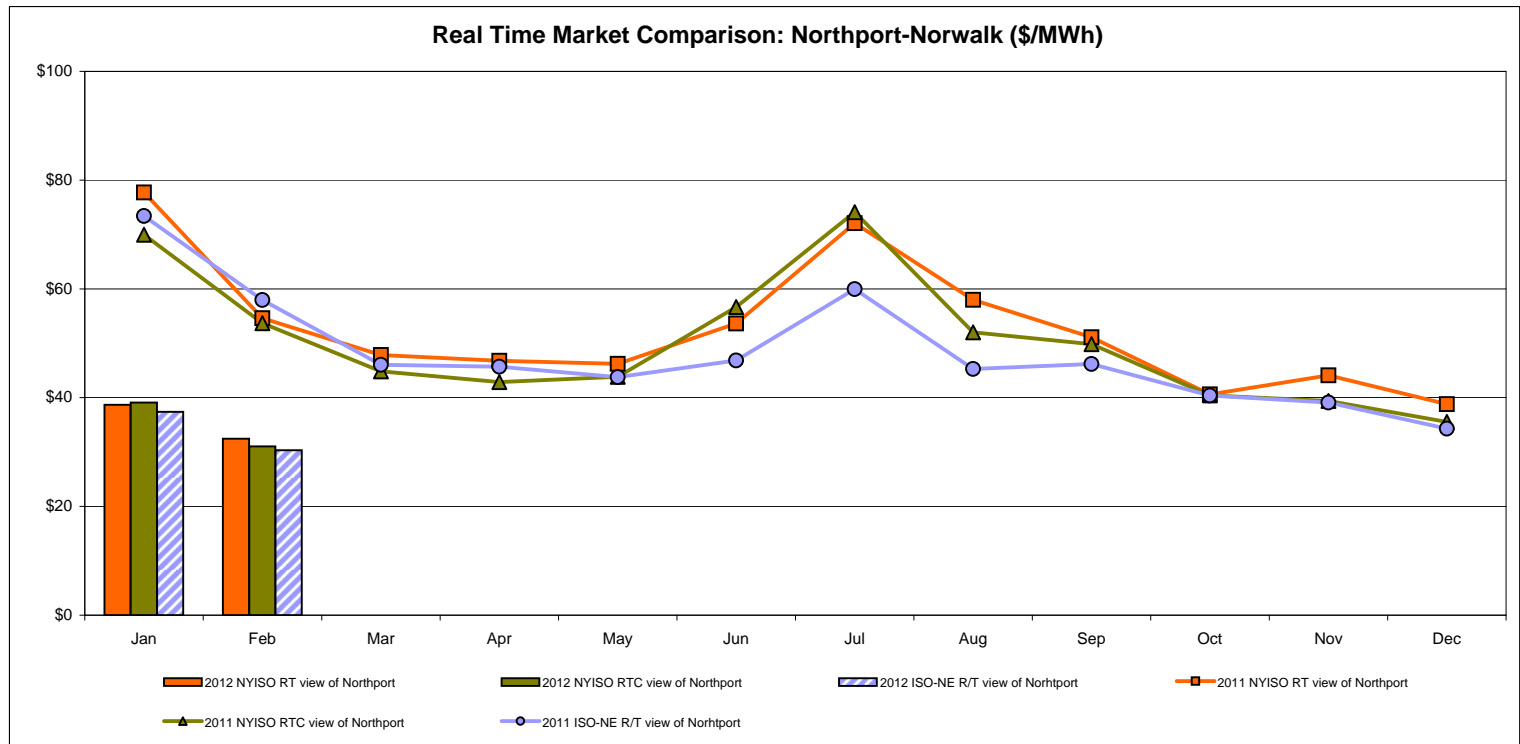
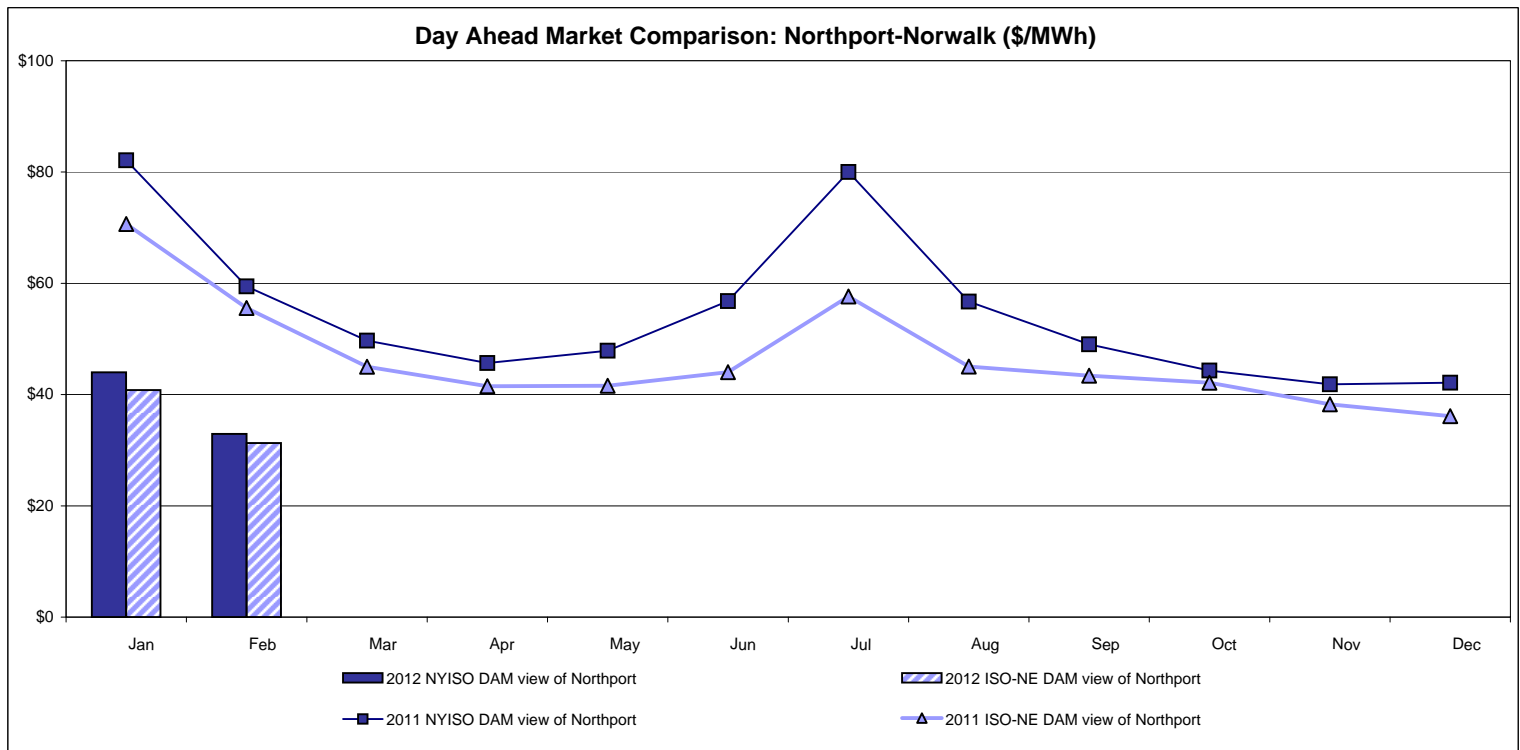
External Controllable Line: Cross Sound Cable (New England)



Note:

ISO-NE Forecast is an advisory posting @ 18:00 day before.
 The DAM and R/T prices at the Shorham 13899 interface are used for ISO-NE.
 The DAM and R/T prices at the CSC interface are used for NYISO.

External Controllable Line: Northport - Norwalk (New England)

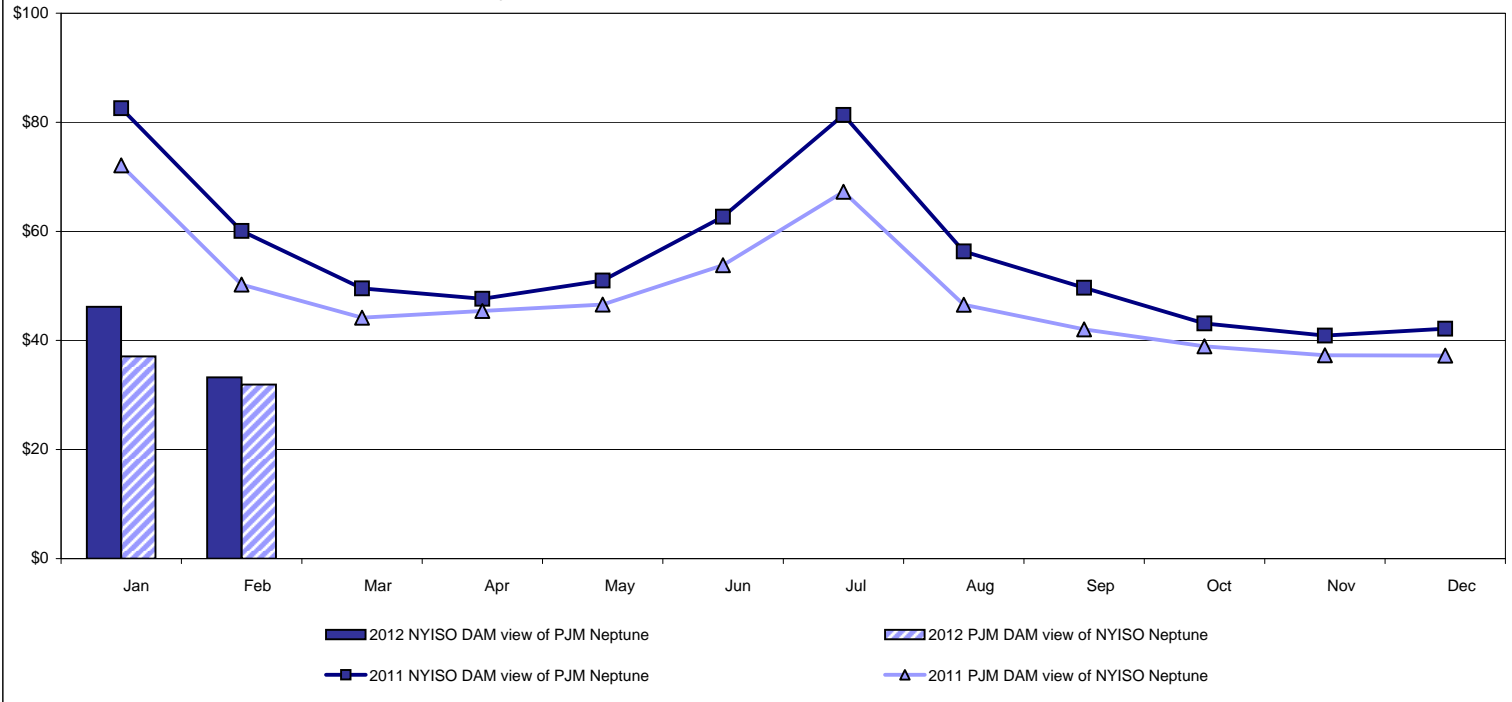


Note:

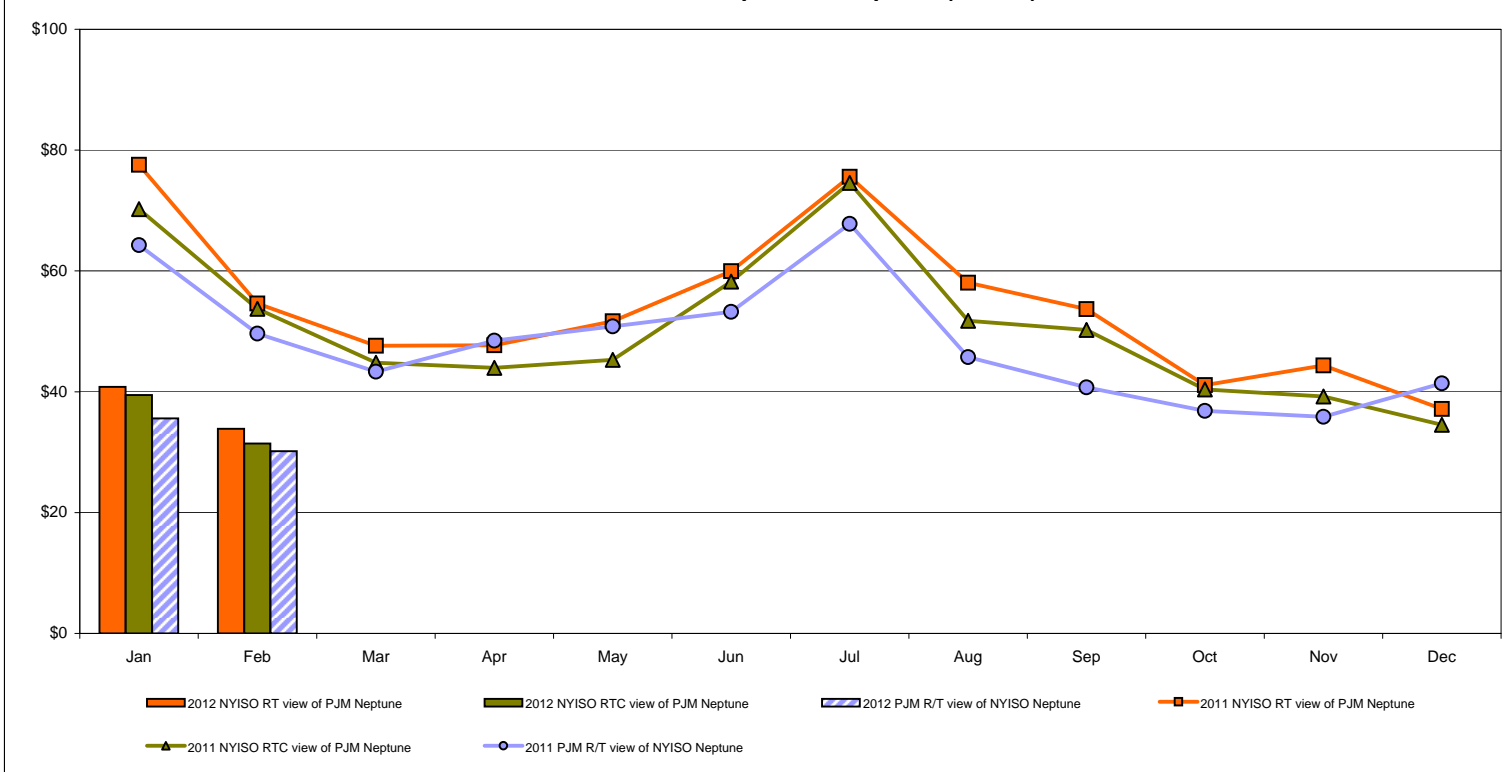
ISO-NE Forecast is an advisory posting @ 18:00 day before.
 The DAM and R/T prices at the Northport 138 interface are used for ISO-NE.
 The DAM and R/T prices at the 1385 interface are used for NYISO.

External Controllable Line: Neptune (PJM)

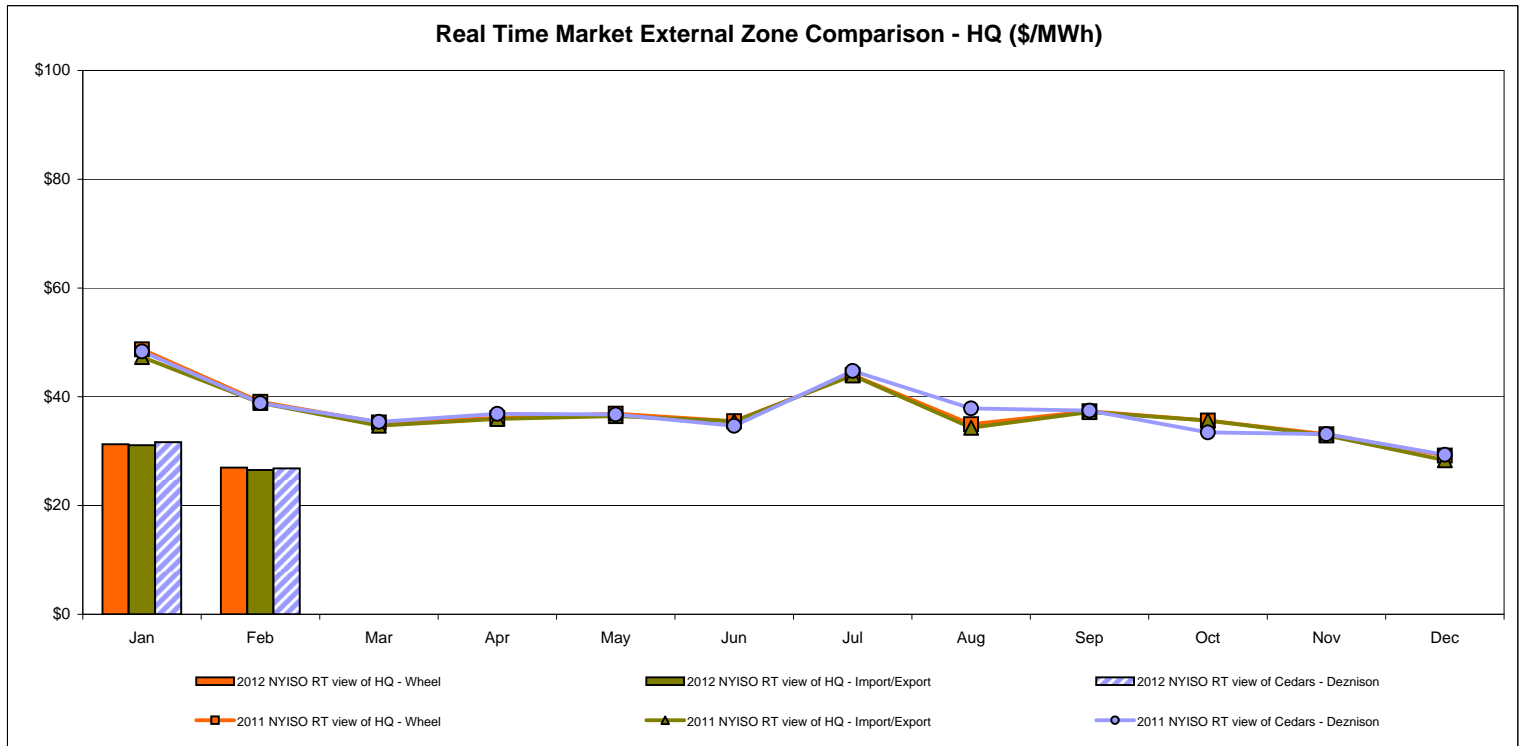
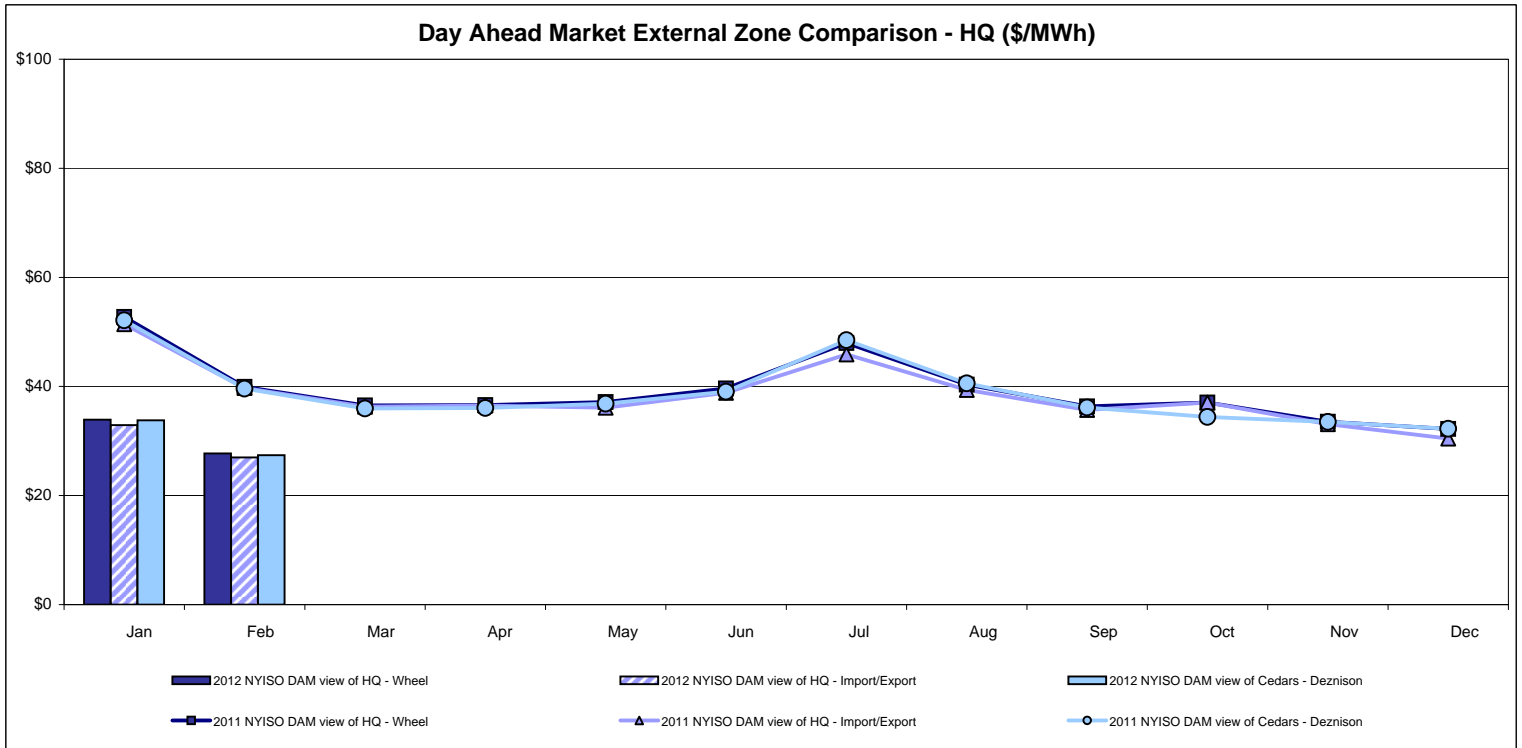
Day Ahead Market Comparison: Neptune (\$/MWh)



Real Time Market Comparison: Neptune (\$/MWh)



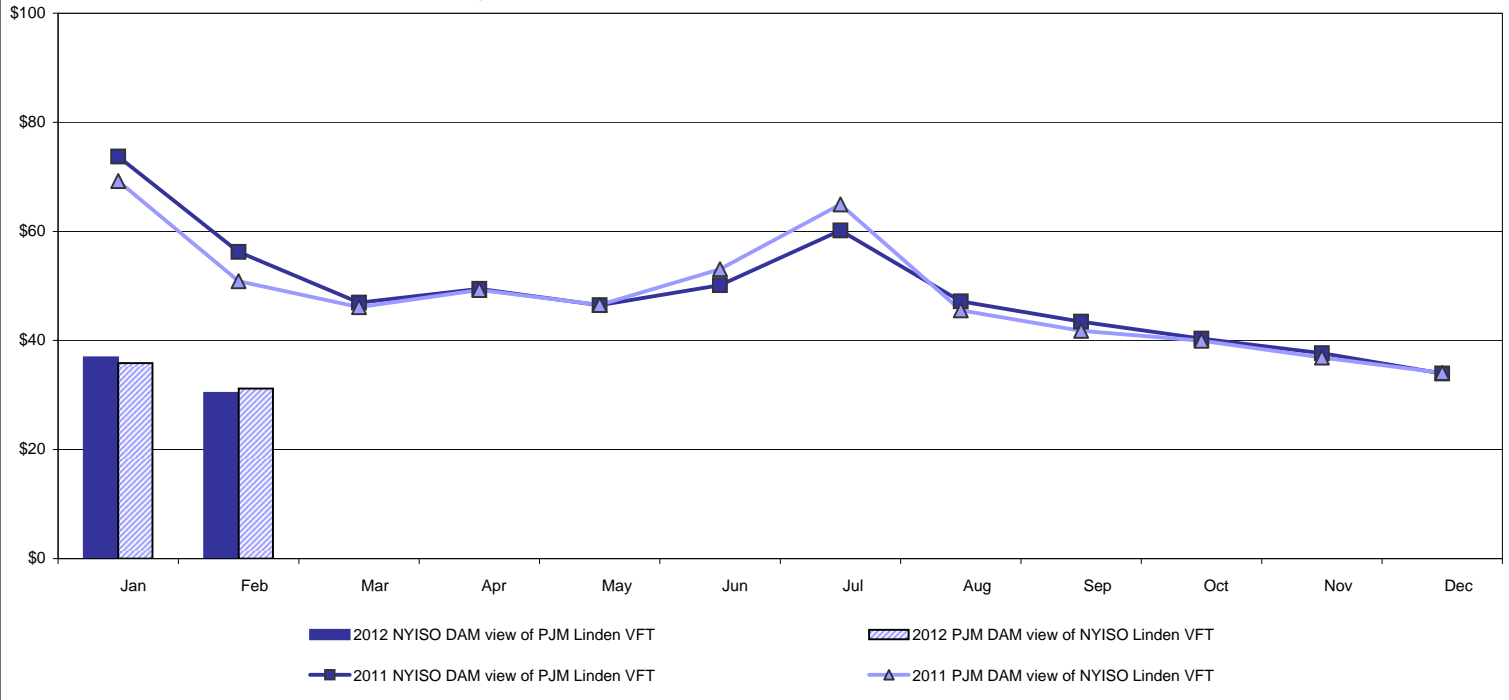
External Comparison Hydro-Quebec



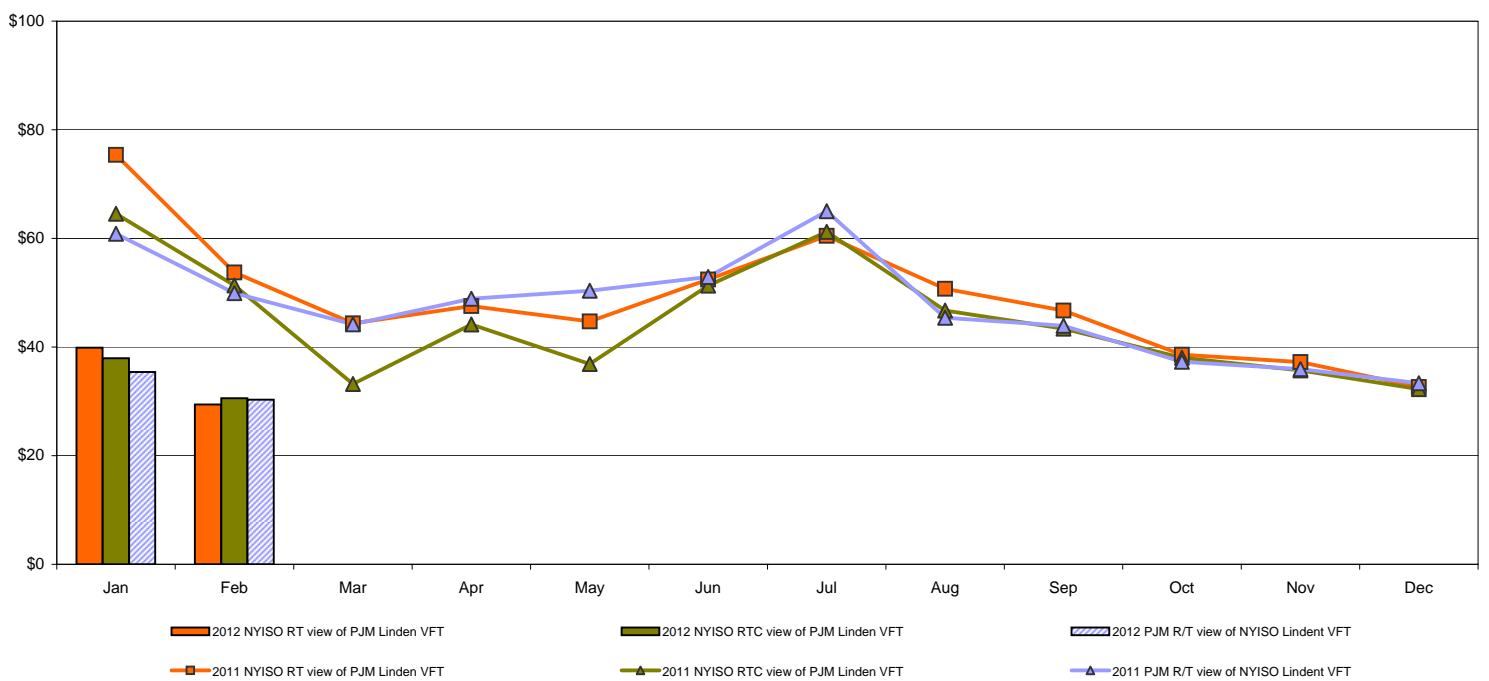
Note:
Hydro-Quebec Prices are unavailable.

External Controllable Line: Linden VFT (PJM)

Day Ahead Market Comparison: Linden VFT (\$/MWh)



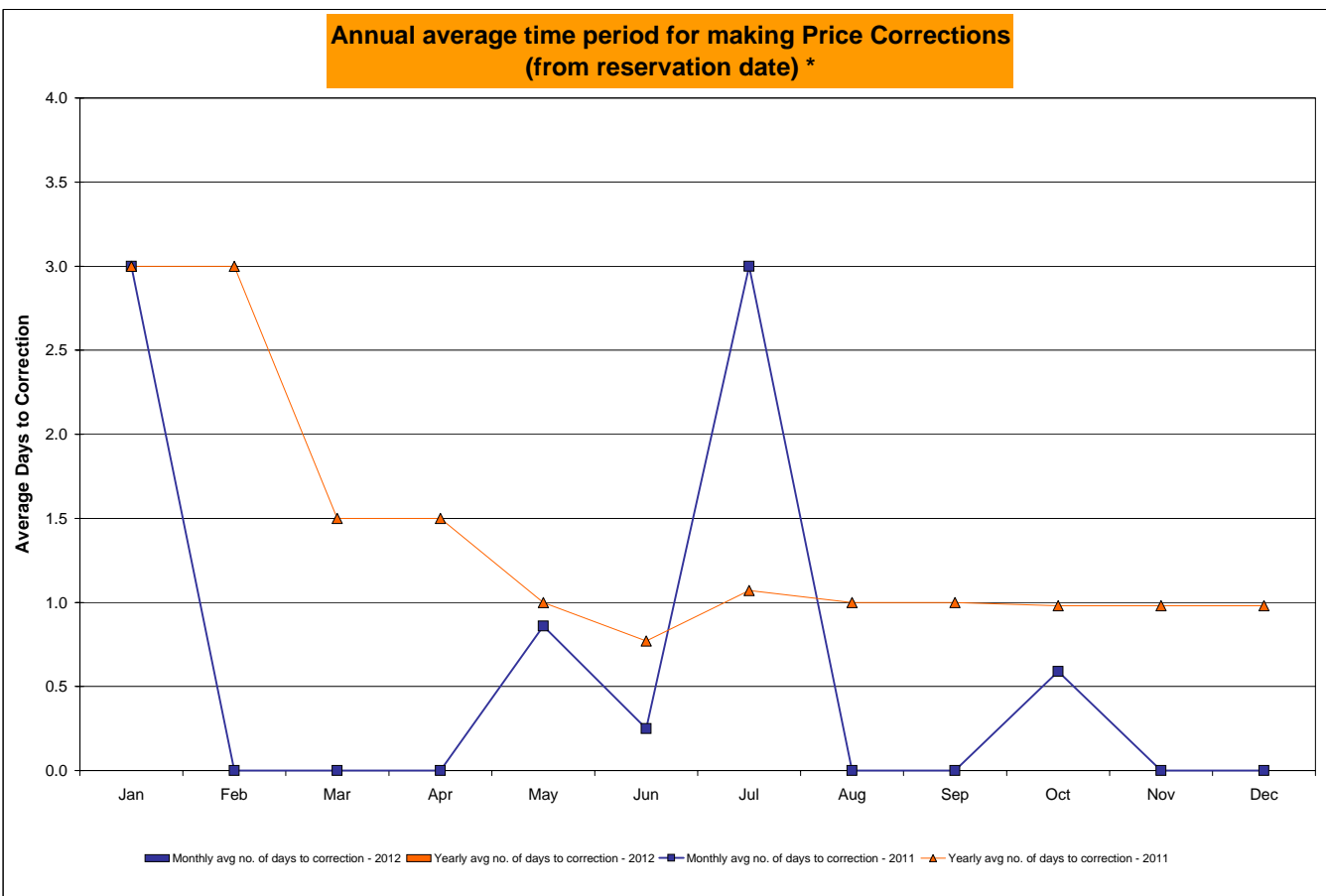
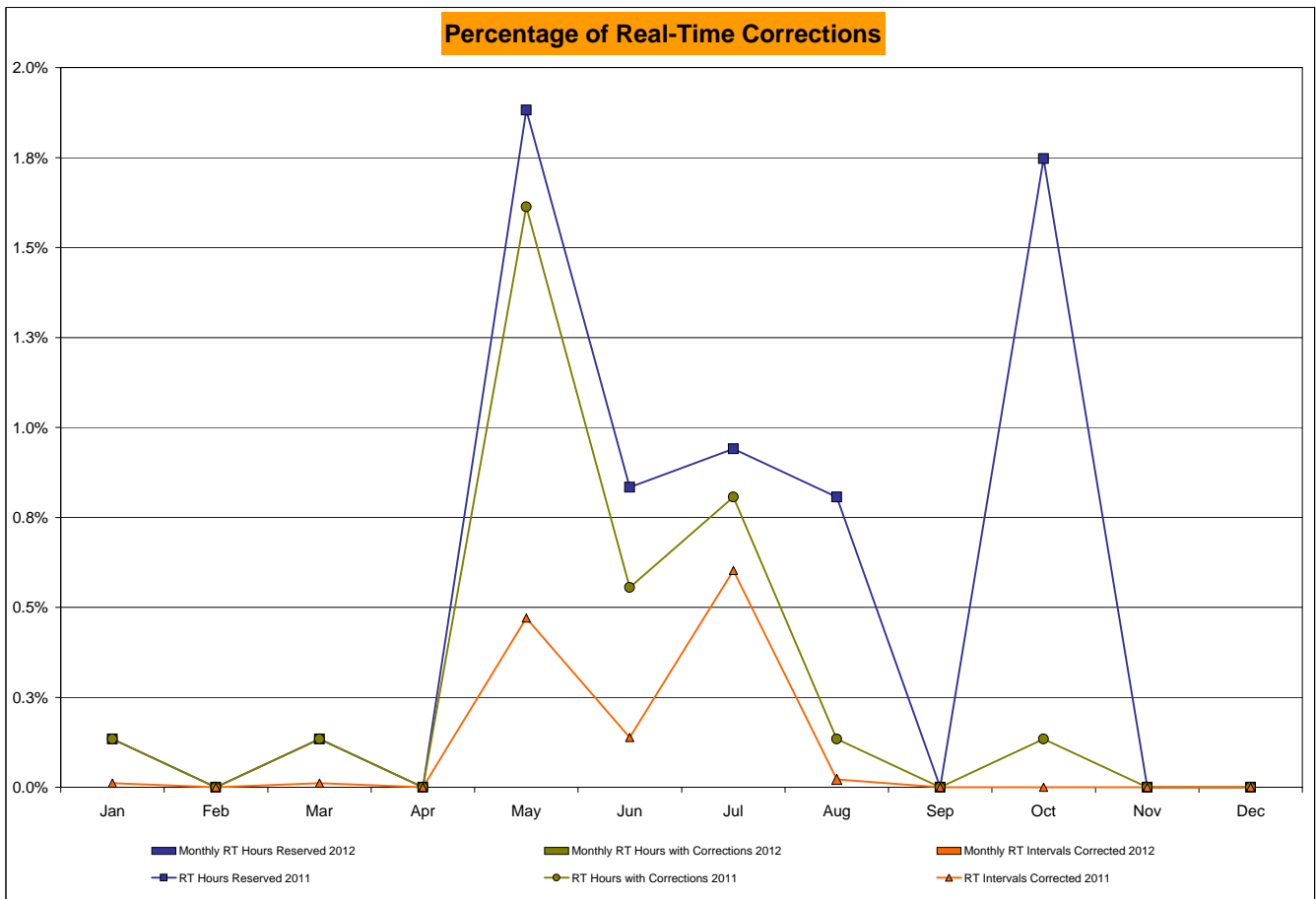
Real Time Market Comparison: Linden VFT (\$/MWh)



NYISO Real Time Price Correction Statistics

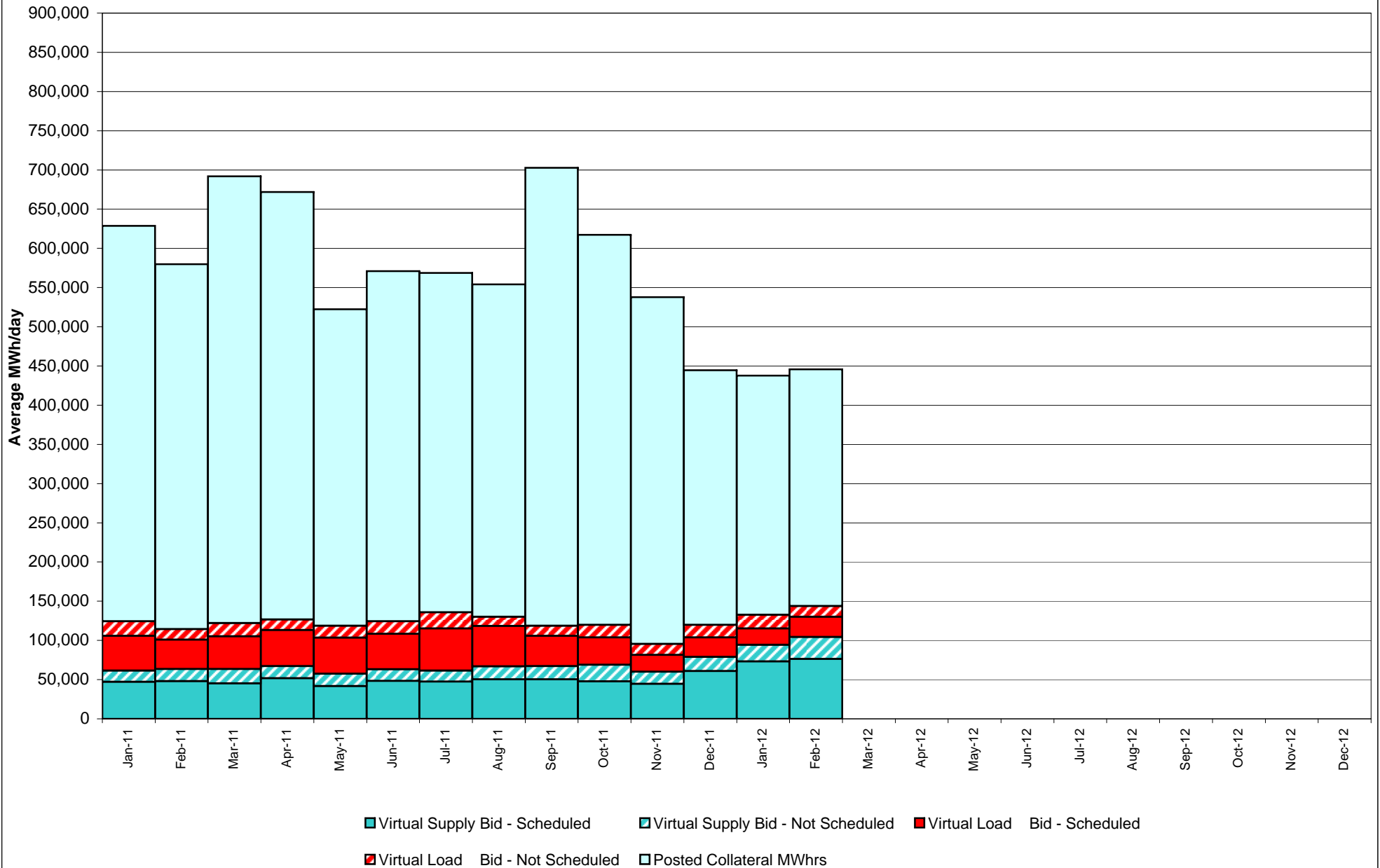
<u>2012</u>		<u>January</u>	<u>February</u>	<u>March</u>	<u>April</u>	<u>May</u>	<u>June</u>	<u>July</u>	<u>August</u>	<u>September</u>	<u>October</u>	<u>November</u>	<u>December</u>
<u>Hour Corrections</u>													
Number of hours with corrections	in the month	0	0										
Number of hours	in the month	744	696										
% of hours with corrections	in the month	0.00%	0.00%										
% of hours with corrections	year-to-date	0.00%	0.00%										
<u>Interval Corrections</u>													
Number of intervals corrected	in the month	0	0										
Number of intervals	in the month	8,987	8,082										
% of intervals corrected	in the month	0.00%	0.00%										
% of intervals corrected	year-to-date	0.00%	0.00%										
<u>Hours Reserved</u>													
Number of hours reserved	in the month	0	0										
Number of hours	in the month	744	696										
% of hours reserved	in the month	0.00%	0.00%										
% of hours reserved	year-to-date	0.00%	0.00%										
<u>Days to Correction *</u>													
Avg. number of days to correction	in the month	0.00	0.00										
Avg. number of days to correction	year-to-date	0.00	0.00										
<u>Days Without Corrections</u>													
Days without corrections	in the month	31	29										
Days without corrections	year-to-date	31	60										
<u>2011</u>		<u>January</u>	<u>February</u>	<u>March</u>	<u>April</u>	<u>May</u>	<u>June</u>	<u>July</u>	<u>August</u>	<u>September</u>	<u>October</u>	<u>November</u>	<u>December</u>
<u>Hour Corrections</u>													
Number of hours with corrections	in the month	1	0	1	0	12	4	6	1	0	1	0	0
Number of hours	in the month	744	672	744	720	744	720	744	744	720	744	720	744
% of hours with corrections	in the month	0.13%	0.00%	0.13%	0.00%	1.61%	0.56%	0.81%	0.13%	0.00%	0.13%	0.00%	0.00%
% of hours with corrections	year-to-date	0.13%	0.07%	0.09%	0.07%	0.39%	0.41%	0.47%	0.43%	0.38%	0.36%	0.32%	0.30%
<u>Interval Corrections</u>													
Number of intervals corrected	in the month	1	0	1	0	42	12	54	2	0	2	0	0
Number of intervals	in the month	8,938	8,049	8,924	8,671	8,939	8,661	8,967	9,021	8,678	8,940	8,671	8,954
% of intervals corrected	in the month	0.01%	0.00%	0.01%	0.00%	0.47%	0.14%	0.60%	0.02%	0.00%	0.02%	0.00%	0.00%
% of intervals corrected	year-to-date	0.01%	0.01%	0.01%	0.01%	0.10%	0.11%	0.18%	0.16%	0.14%	0.13%	0.12%	0.11%
<u>Hours Reserved</u>													
Number of hours reserved	in the month	1	0	1	0	14	6	7	6	0	13	0	0
Number of hours	in the month	744	672	744	720	744	720	744	744	720	744	720	744
% of hours reserved	in the month	0.13%	0.00%	0.13%	0.00%	1.88%	0.83%	0.94%	0.81%	0.00%	1.75%	0.00%	0.00%
% of hours reserved	year-to-date	0.13%	0.07%	0.09%	0.07%	0.44%	0.51%	0.57%	0.60%	0.53%	0.66%	0.60%	0.55%
<u>Days to Correction *</u>													
Avg. number of days to correction	in the month	3.00	0.00	0.00	0.00	0.86	0.25	3.00	0.00	0.00	0.59	0.00	0.00
Avg. number of days to correction	year-to-date	3.00	3.00	1.50	1.50	1.00	0.77	1.07	1.00	1.00	0.98	0.98	0.98
<u>Days Without Corrections</u>													
Days without corrections	in the month	30	28	30	30	24	26	29	30	30	30	30	31
Days without corrections	year-to-date	30	58	88	118	142	168	197	227	257	287	317	348

* Calendar days from reservation date.

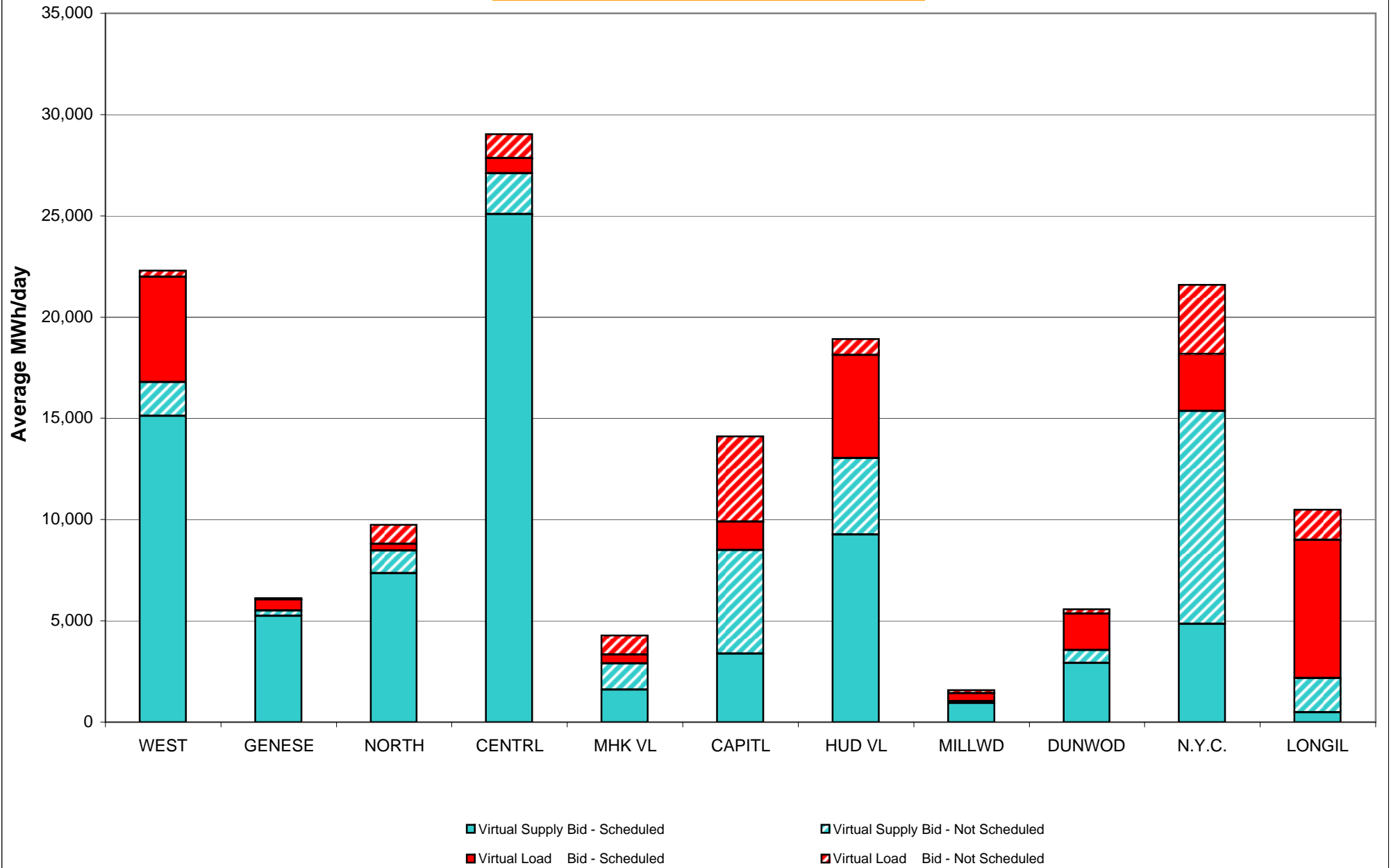


* Calendar days from reservation date.

NYISO Virtual Trading Average MWh per day



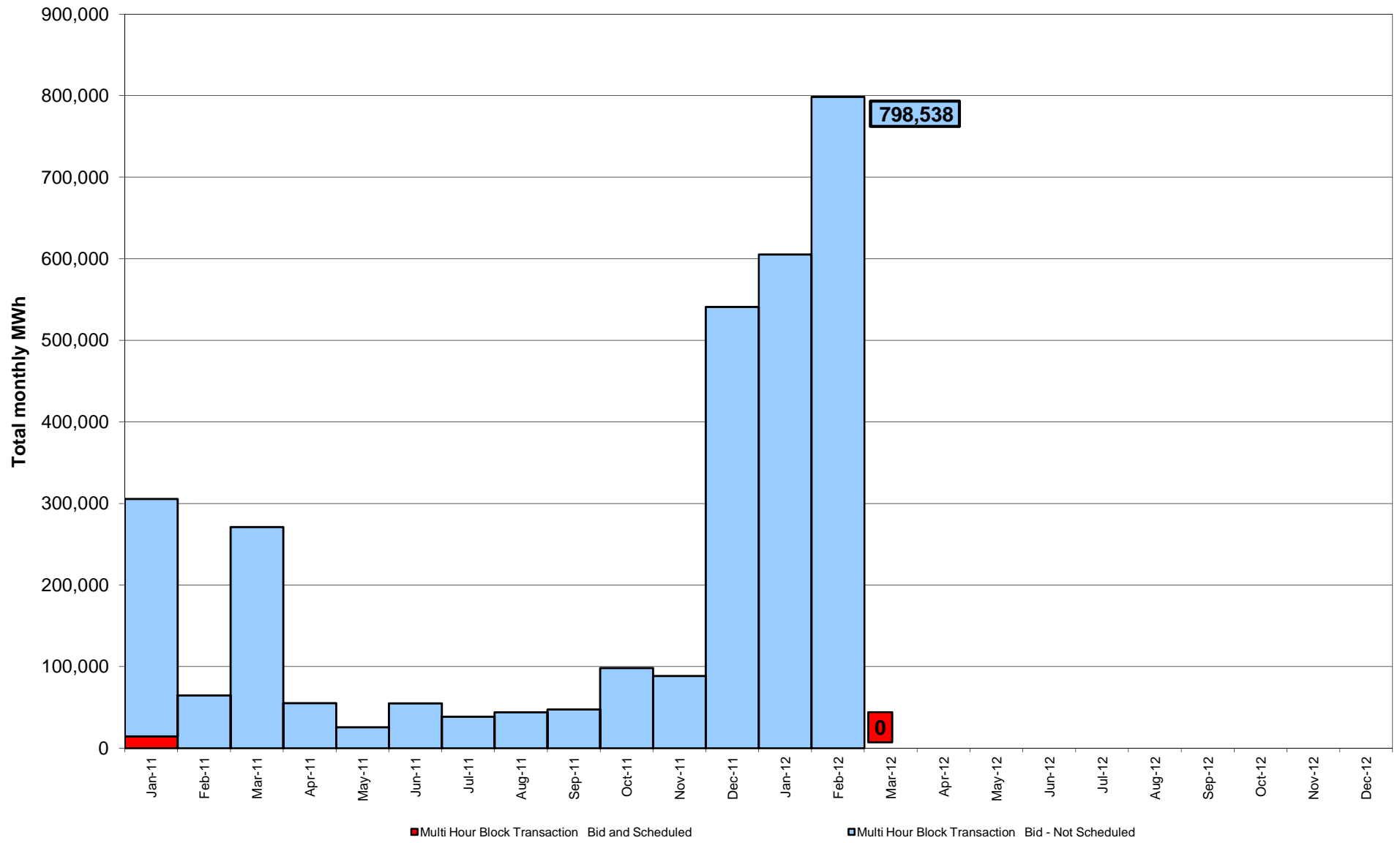
Virtual Load and Supply Zonal Statistics through February 29, 2012



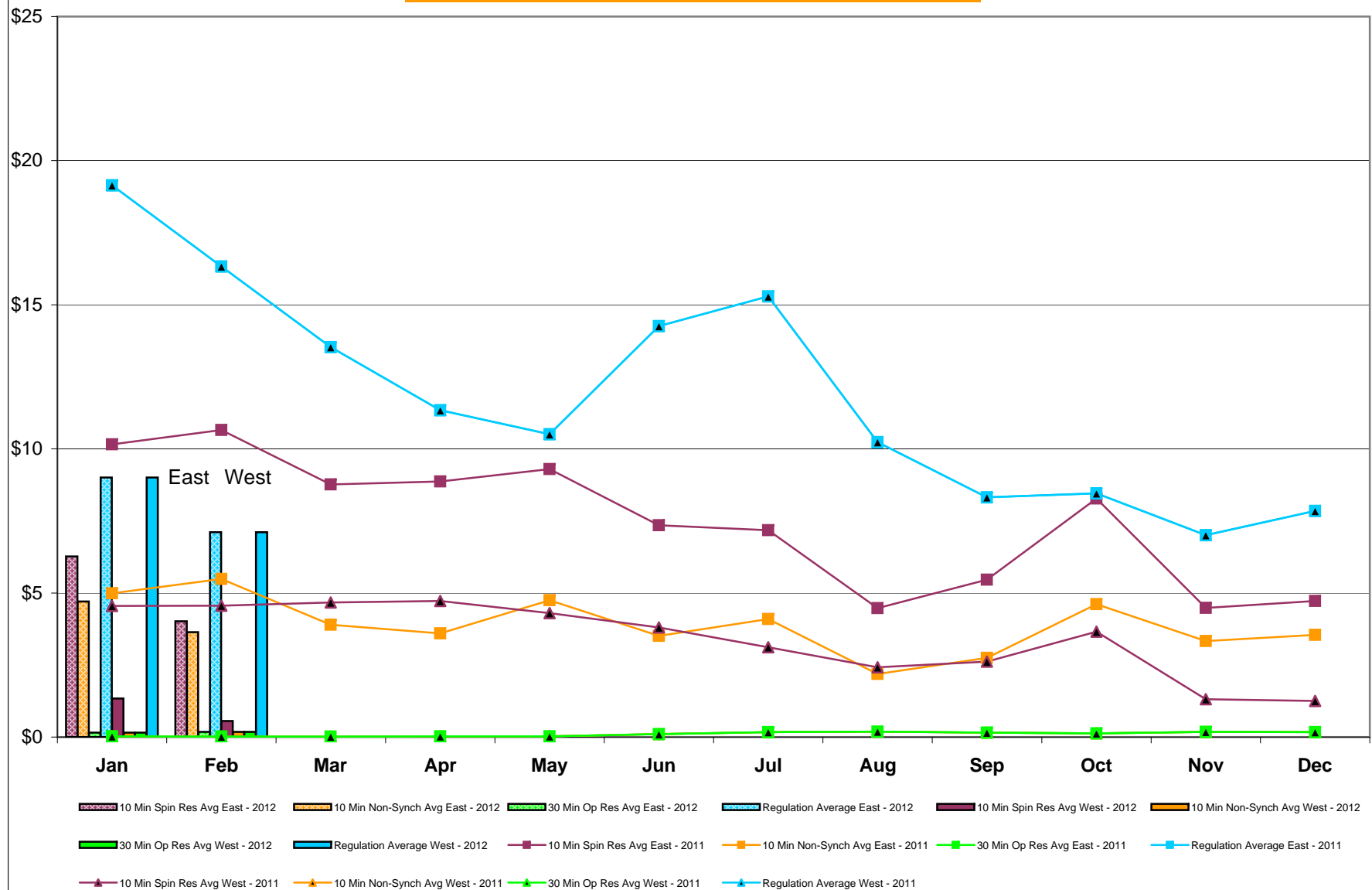
Virtual Load and Supply Zonal Statistics (Average MWh/day) - 2012

Virtual Load Bid						Virtual Supply Bid											
Zone	Date	Scheduled	Not Scheduled	Scheduled	Not Scheduled	Zone	Date	Scheduled	Not Scheduled	Scheduled	Not Scheduled	Zone	Date	Scheduled	Not Scheduled	Scheduled	Not Scheduled
WEST	Jan-12	2,246	938	13,593	956	MHK VL	Jan-12	419	967	1,488	1,127	DUNWOD	Jan-12	1,401	461	1,432	189
	Feb-12	5,195	315	15,119	1,672		Feb-12	444	935	1,592	1,303		Feb-12	1,805	219	2,922	625
	Mar-12						Mar-12						Mar-12				
	Apr-12						Apr-12						Apr-12				
	May-12						May-12						May-12				
	Jun-12						Jun-12						Jun-12				
	Jul-12						Jul-12						Jul-12				
	Aug-12						Aug-12						Aug-12				
	Sep-12						Sep-12						Sep-12				
	Oct-12						Oct-12						Oct-12				
	Nov-12						Nov-12						Nov-12				
	Dec-12						Dec-12						Dec-12				
GENESE	Jan-12	257	102	5,254	64	CAPITL	Jan-12	1,903	5,590	3,842	3,364	N.Y.C.	Jan-12	4,572	4,060	2,511	9,344
	Feb-12	553	52	5,238	271		Feb-12	1,408	4,213	3,379	5,116		Feb-12	2,819	3,414	4,839	10,519
	Mar-12						Mar-12						Mar-12				
	Apr-12						Apr-12						Apr-12				
	May-12						May-12						May-12				
	Jun-12						Jun-12						Jun-12				
	Jul-12						Jul-12						Jul-12				
	Aug-12						Aug-12						Aug-12				
	Sep-12						Sep-12						Sep-12				
	Oct-12						Oct-12						Oct-12				
	Nov-12						Nov-12						Nov-12				
	Dec-12						Dec-12						Dec-12				
NORTH	Jan-12	289	967	7,215	1,189	HUD VL	Jan-12	3,466	693	9,513	2,413	LONGIL	Jan-12	5,372	2,036	684	1,383
	Feb-12	332	935	7,359	1,119		Feb-12	5,087	794	9,250	3,788		Feb-12	6,810	1,496	473	1,708
	Mar-12						Mar-12						Mar-12				
	Apr-12						Apr-12						Apr-12				
	May-12						May-12						May-12				
	Jun-12						Jun-12						Jun-12				
	Jul-12						Jul-12						Jul-12				
	Aug-12						Aug-12						Aug-12				
	Sep-12						Sep-12						Sep-12				
	Oct-12						Oct-12						Oct-12				
	Nov-12						Nov-12						Nov-12				
	Dec-12						Dec-12						Dec-12				
CENTRL	Jan-12	526	1,178	26,589	1,270	MILLWD	Jan-12	505	206	929	50	NYISO	Jan-12	20,956	17,198	73,050	21,349
	Feb-12	757	1,175	25,087	2,011		Feb-12	379	161	949	88		Feb-12	25,588	13,708	76,209	28,222
	Mar-12						Mar-12						Mar-12				
	Apr-12						Apr-12						Apr-12				
	May-12						May-12						May-12				
	Jun-12						Jun-12						Jun-12				
	Jul-12						Jul-12						Jul-12				
	Aug-12						Aug-12						Aug-12				
	Sep-12						Sep-12						Sep-12				
	Oct-12						Oct-12						Oct-12				
	Nov-12						Nov-12						Nov-12				
	Dec-12						Dec-12						Dec-12				

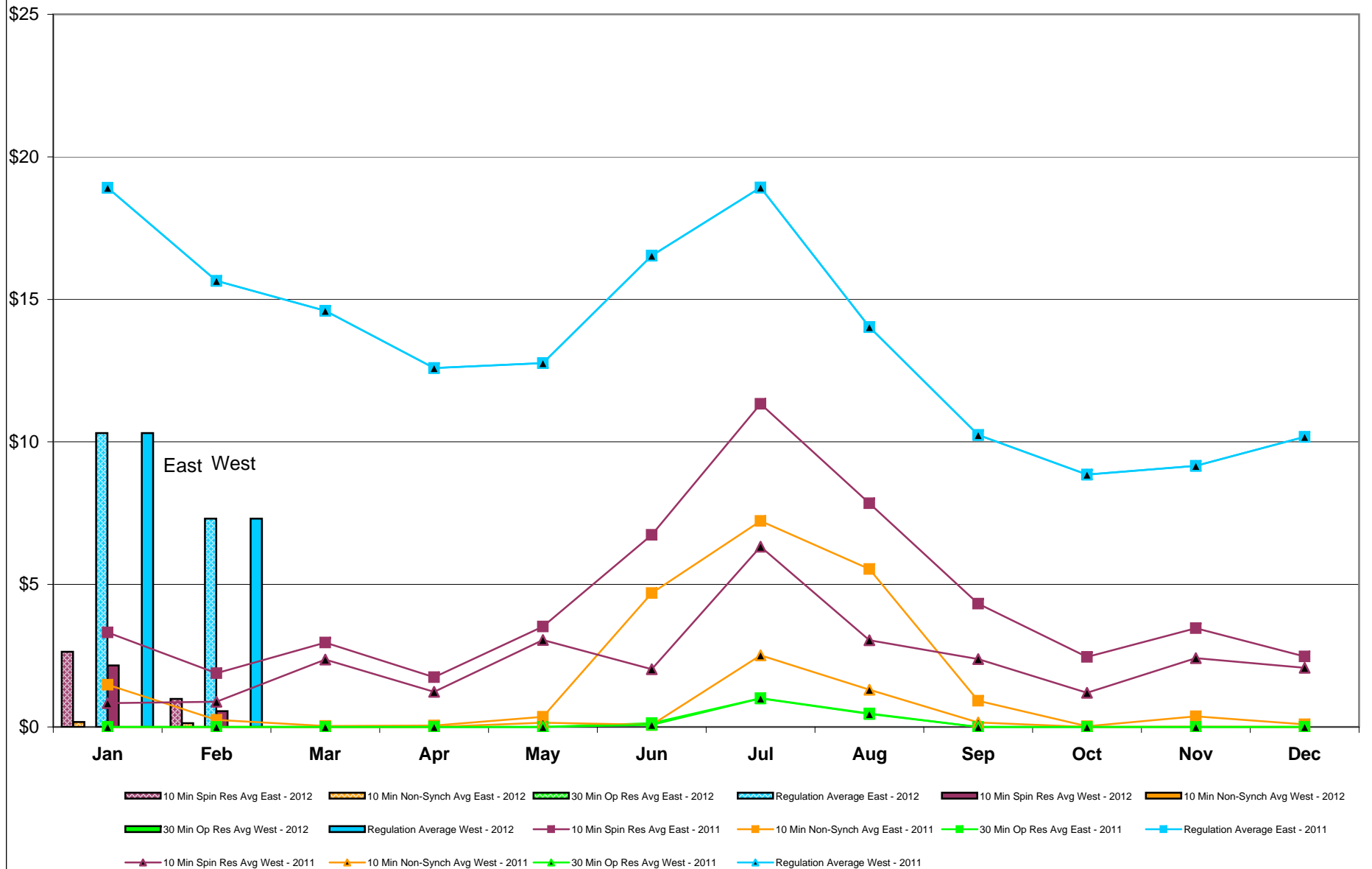
NYISO Multi Hour Block Transactions Monthly Total MWh



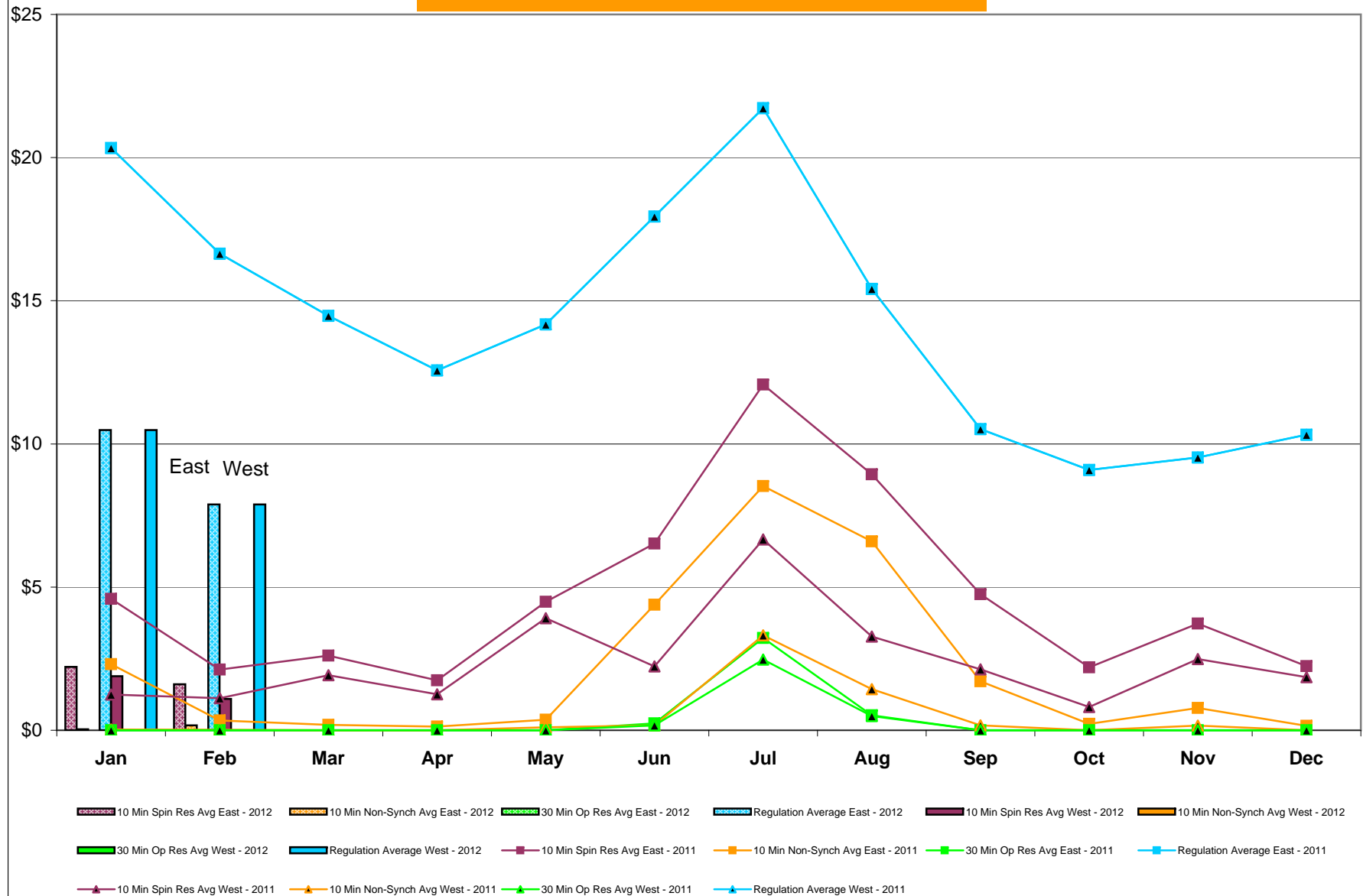
NYISO Monthly Average Ancillary Service Prices Day Ahead Market 2011 - 2012



NYISO Monthly Average Ancillary Service Prices RTC Market 2011 - 2012



NYISO Monthly Average Ancillary Service Prices Real Time Market 2011 - 2012

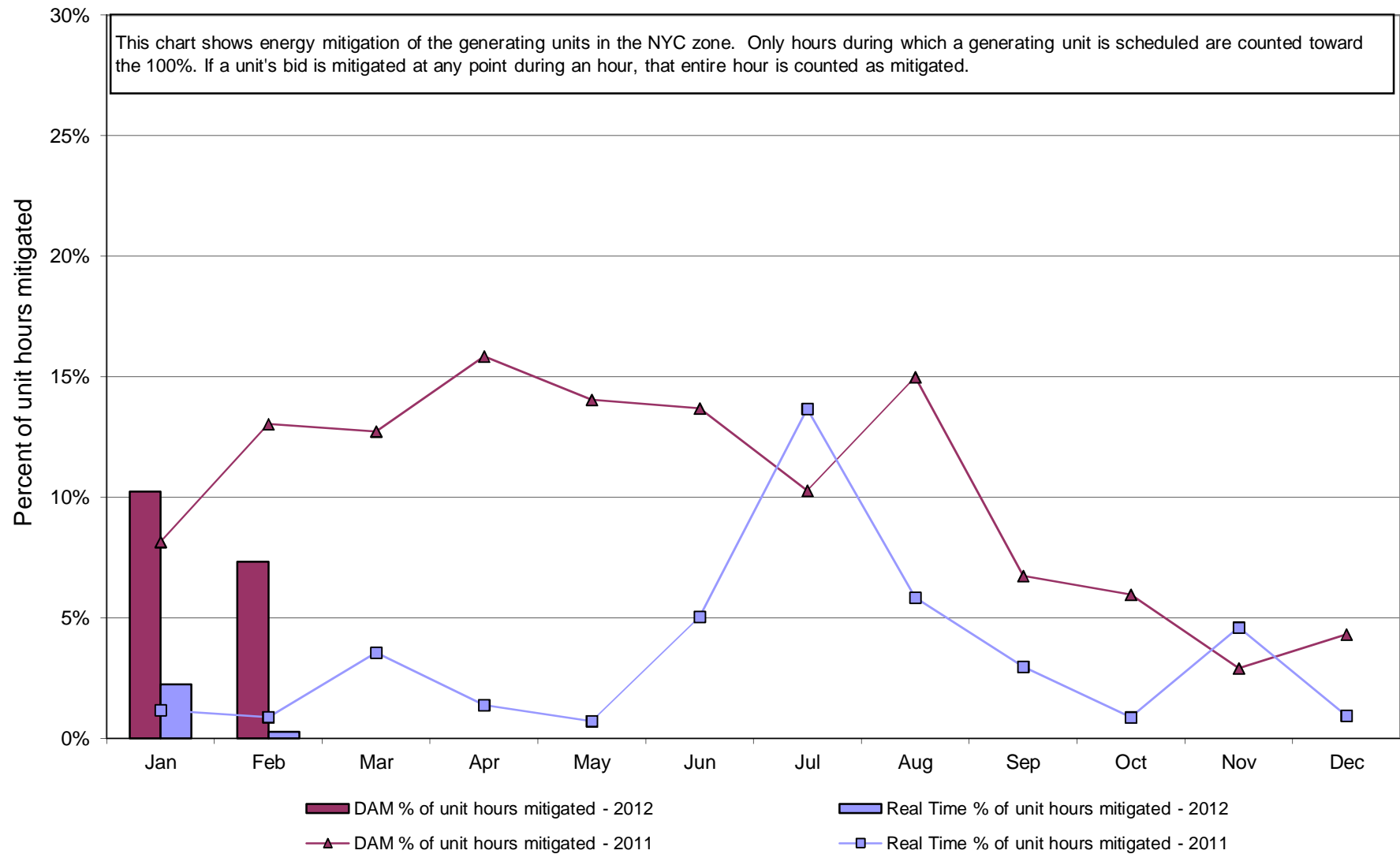


NYISO Markets Ancillary Services Statistics - Unweighted Price (\$/MWH)

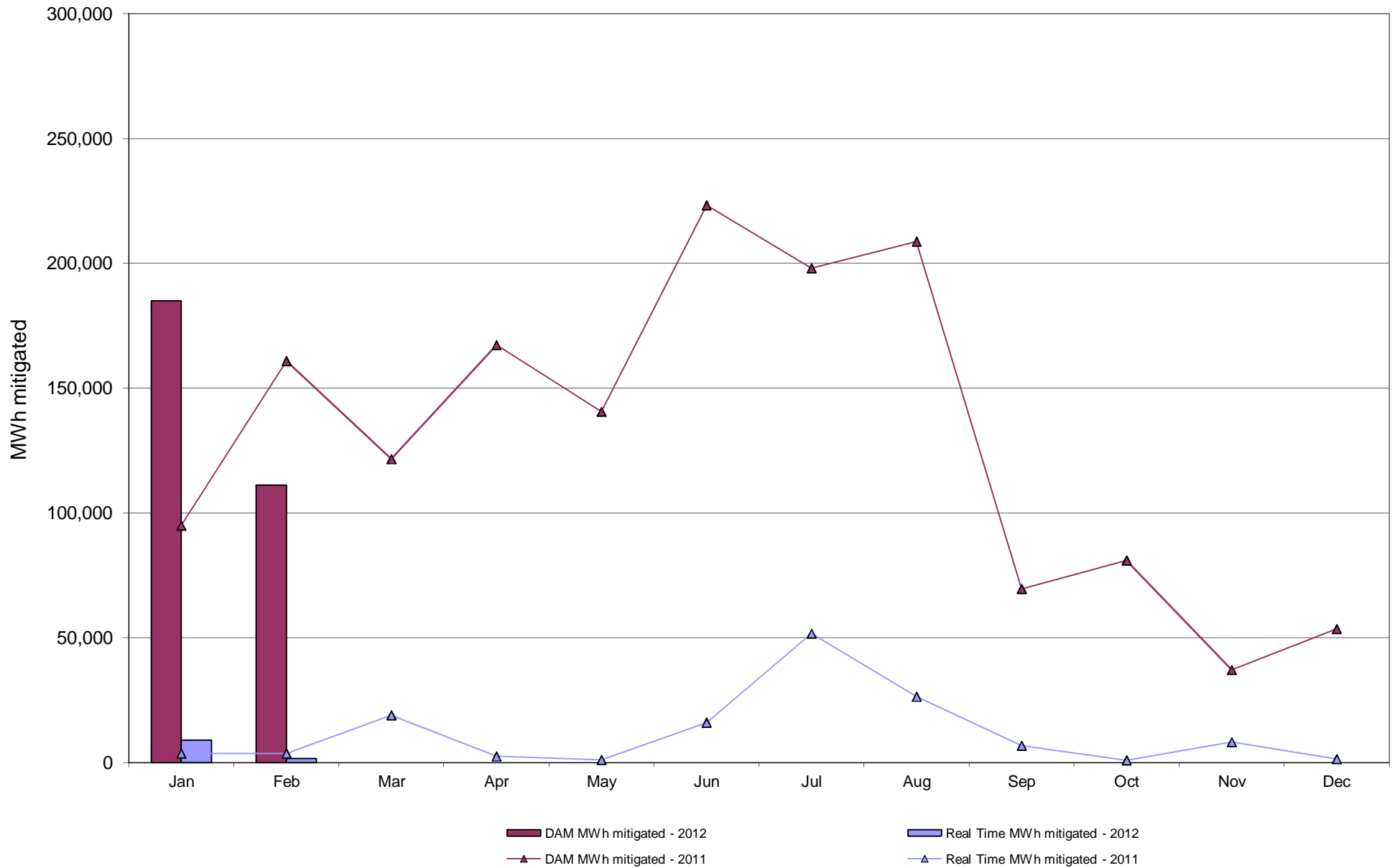
2012	<u>January</u>	<u>February</u>	<u>March</u>	<u>April</u>	<u>May</u>	<u>June</u>	<u>July</u>	<u>August</u>	<u>September</u>	<u>October</u>	<u>November</u>	<u>December</u>
Day Ahead Market												
10 Min Spin East	6.26	4.01										
10 Min Spin West	1.34	0.56										
10 Min Non Synch East	4.71	3.64										
10 Min Non Synch West	0.15	0.18										
30 Min East	0.15	0.18										
30 Min West	0.15	0.18										
Regulation East	9.01	7.11										
Regulation West	9.01	7.11										
RTC Market												
10 Min Spin East	2.64	0.99										
10 Min Spin West	2.16	0.55										
10 Min Non Synch East	0.17	0.13										
10 Min Non Synch West	0.00	0.00										
30 Min East	0.00	0.00										
30 Min West	0.00	0.00										
Regulation East	10.31	7.31										
Regulation West	10.31	7.31										
Real Time Market												
10 Min Spin East	2.21	1.61										
10 Min Spin West	1.89	1.09										
10 Min Non Synch East	0.03	0.17										
10 Min Non Synch West	0.00	0.00										
30 Min East	0.00	0.00										
30 Min West	0.00	0.00										
Regulation East	10.49	7.89										
Regulation West	10.49	7.89										
2011	<u>January</u>	<u>February</u>	<u>March</u>	<u>April</u>	<u>May</u>	<u>June</u>	<u>July</u>	<u>August</u>	<u>September</u>	<u>October</u>	<u>November</u>	<u>December</u>
Day Ahead Market												
10 Min Spin East	10.15	10.66	8.76	8.87	9.30	7.35	7.18	4.47	5.46	7.76	4.48	4.72
10 Min Spin West	4.55	4.56	4.67	4.72	4.30	3.80	3.12	2.42	2.62	3.15	1.32	1.25
10 Min Non Synch East	4.99	5.48	3.90	3.60	4.75	3.51	4.10	2.19	2.75	4.62	3.33	3.55
10 Min Non Synch West	0.02	0.02	0.02	0.03	0.03	0.10	0.17	0.19	0.15	0.14	0.18	0.17
30 Min East	0.02	0.02	0.02	0.03	0.03	0.10	0.17	0.19	0.15	0.14	0.18	0.17
30 Min West	0.02	0.02	0.02	0.03	0.03	0.10	0.17	0.19	0.15	0.14	0.18	0.17
Regulation East	19.14	16.33	13.53	11.34	10.51	14.26	15.29	10.23	8.32	8.02	7.01	7.85
Regulation West	19.14	16.33	13.53	11.34	10.51	14.26	15.29	10.23	8.32	8.02	7.01	7.85
RTC Market												
10 Min Spin East	3.32	1.88	2.96	1.74	3.52	6.74	11.34	7.84	4.33	3.84	3.46	2.47
10 Min Spin West	0.83	0.89	2.37	1.23	3.05	2.03	6.33	3.04	2.38	2.23	2.41	2.08
10 Min Non Synch East	1.48	0.25	0.04	0.05	0.35	4.69	7.23	5.54	0.91	0.10	0.37	0.09
10 Min Non Synch West	0.00	0.00	0.00	0.00	0.15	0.07	2.51	1.31	0.16	0.00	0.01	0.00
30 Min East	0.00	0.00	0.00	0.00	0.00	0.13	1.01	0.47	0.00	0.00	0.00	0.00
30 Min West	0.00	0.00	0.00	0.00	0.00	0.07	1.00	0.45	0.00	0.00	0.00	0.00
Regulation East	18.91	15.65	14.60	12.59	12.77	16.54	18.93	14.03	10.24	9.62	9.16	10.18
Regulation West	18.91	15.65	14.60	12.59	12.77	16.54	18.93	14.03	10.24	9.62	9.16	10.18
Real Time Market												
10 Min Spin East	4.59	2.12	2.61	1.74	4.49	6.52	12.08	8.94	4.75	3.03	3.72	2.24
10 Min Spin West	1.25	1.12	1.92	1.26	3.92	2.23	6.66	3.27	2.12	1.50	2.49	1.86
10 Min Non Synch East	2.31	0.35	0.19	0.13	0.37	4.38	8.52	6.60	1.71	0.21	0.77	0.15
10 Min Non Synch West	0.02	0.02	0.00	0.00	0.10	0.18	3.31	1.44	0.17	0.00	0.16	0.00
30 Min East	0.00	0.00	0.00	0.00	0.00	0.24	3.22	0.52	0.00	0.00	0.00	0.00
30 Min West	0.00	0.00	0.00	0.00	0.00	0.18	2.47	0.50	0.00	0.00	0.00	0.00
Regulation East	20.34	16.65	14.48	12.57	14.17	17.94	21.72	15.41	10.51	9.34	9.53	10.32
Regulation West	20.34	16.65	14.48	12.57	14.17	17.94	21.72	15.41	10.51	9.34	9.53	10.32

NYISO In City Energy Mitigation - AMP (NYC Zone) 2011 - 2012

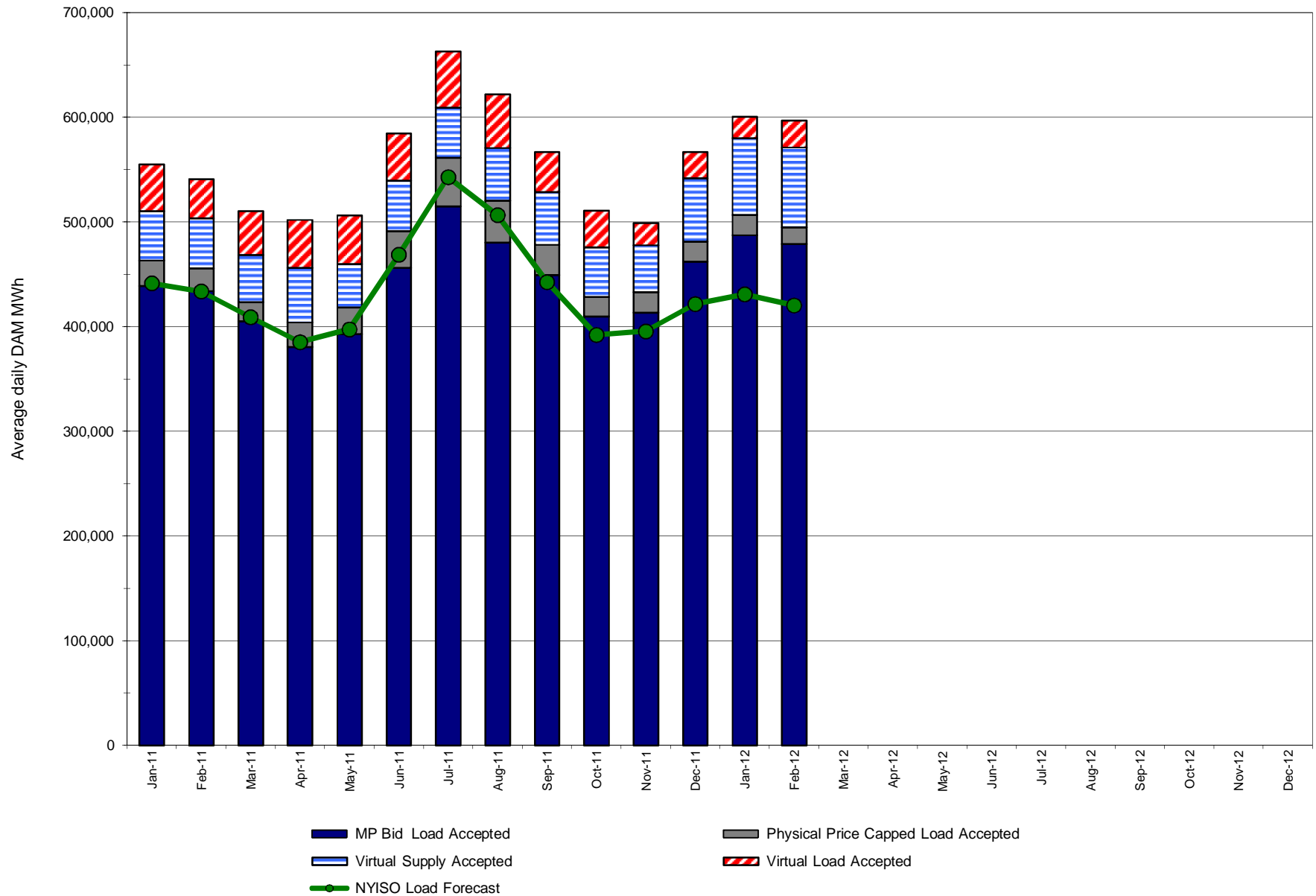
Percentage of committed unit-hours mitigated



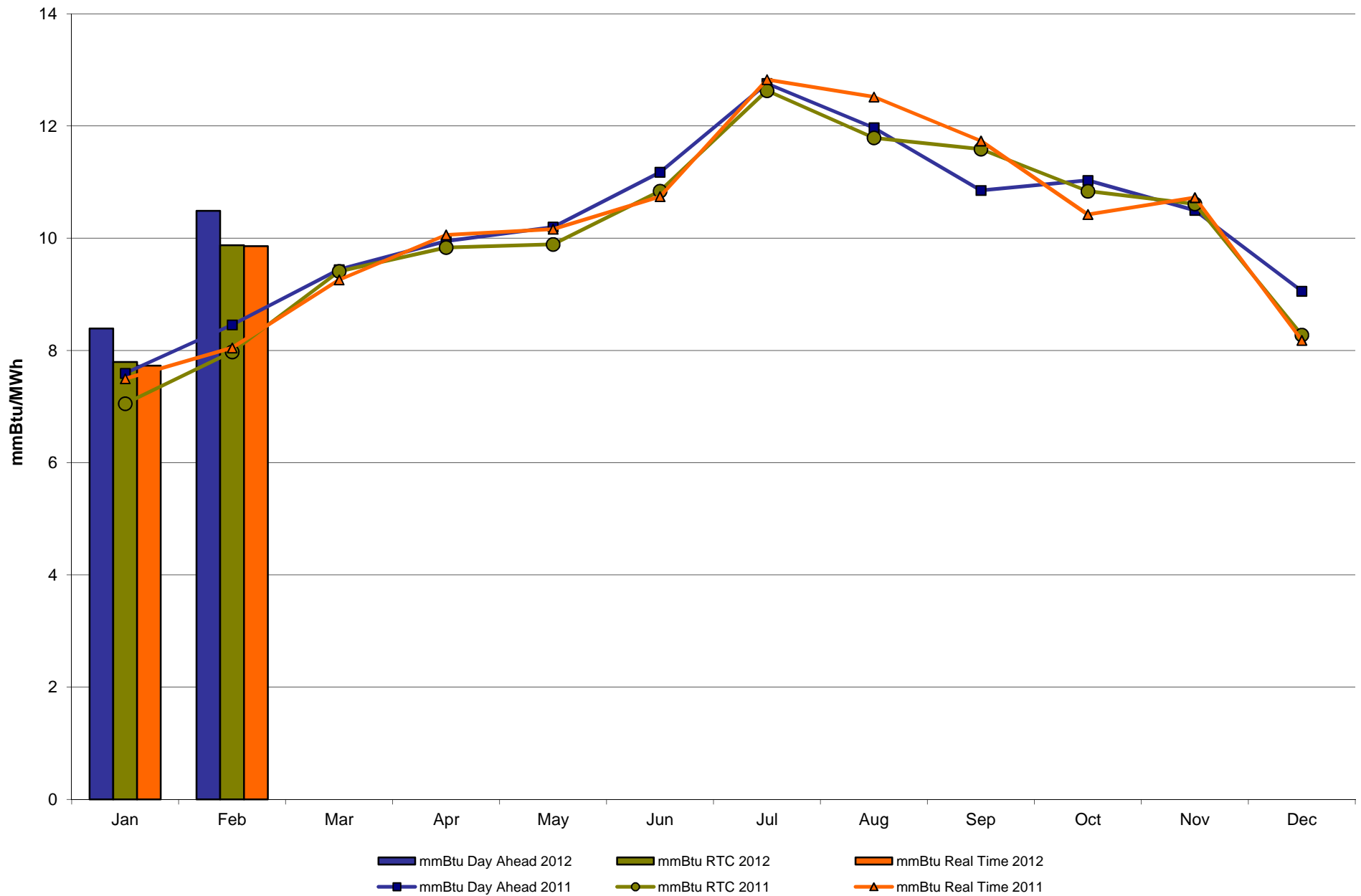
NYISO In City Energy Mitigation (NYC Zone) 2011 - 2012
Monthly megawatt hours mitigated



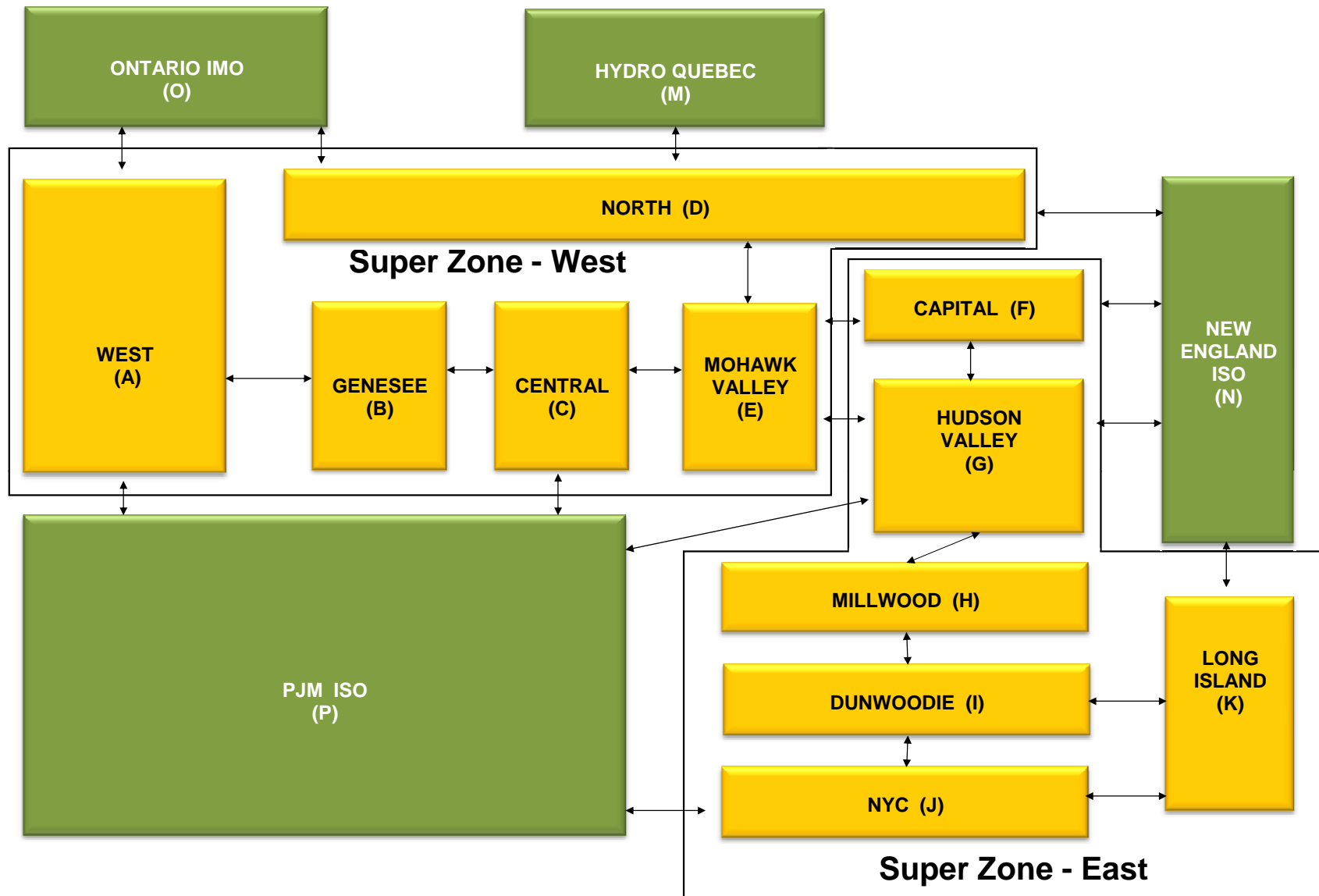
NYISO Average Daily DAM Load Bid Summary



Monthly Implied Heat Rate 2011-2012



NYISO LBMP ZONES



Billing Codes for Chart 4-C

<u>Chart 4-C Category Name</u>	<u>Billing Code</u>	<u>Billing Category Name</u>
Bid Production Cost Guarantee Balancing	81203	Balancing NYISO Bid Production Cost Guarantee - Internal Units
Bid Production Cost Guarantee Balancing	81204	Balancing NYISO Bid Production Cost Guarantee - External Units
Bid Production Cost Guarantee Balancing	81205	Balancing NYISO Bid Production Cost Guarantee Expenditure due to Curtailed Imports
Bid Production Cost Guarantee Balancing	81208	Balancing NYISO Bid Production Cost Guarantee - Internal Units
Bid Production Cost Guarantee Balancing	81209	Balancing NYISO Bid Production Cost Guarantee - External Units
Bid Production Cost Guarantee Balancing	81213	Balancing NYISO Bid Production Cost Guarantee Expenditure due to Curtailed Imports
Bid Production Cost Guarantee DAM	81201	DAM NYISO Bid Production Cost Guarantee - Internal Units
Bid Production Cost Guarantee DAM	84001	EDRP/SCR Demand Response - Local
Bid Production Cost Guarantee DAM	84101	EDRP/SCR Demand Response - NYISO Wide
Bid Production Cost Guarantee DAM	81401	DAM Price Responsive Load Program
Bid Production Cost Guarantee DAM	81202	DAM NYISO Bid Production Cost Guarantee - External Units
Bid Production Cost Guarantee DAM	81206	DAM NYISO Bid Production Cost Guarantee - Internal Units
Bid Production Cost Guarantee DAM	81207	DAM NYISO Bid Production Cost Guarantee - External Units
Bid Production Cost Guarantee DAM Virtual	81501	DAM Virtual Bid Production Cost Guarantee
DAM Contract Balancing	81315	DAM Contract Balancing
DAM Contract Balancing	81317	DAM Contract Balancing
Local Reliability Balancing	81002	Balancing Local Reliability Bid Production Cost Guarantee
Local Reliability Balancing	83901	Margin Restoration (MOB) Revenue
Local Reliability DAM	81001	DAM Local Reliability Bid Production Cost Guarantee
NYISO Cost of Operations	80901	NYISO Cost Of Operations
NYISO Cost of Operations	80902	NYISO Cost Of Operations
NYISO Cost of Operations	83501	NYISO Cost Of Operations
NYISO Cost of Operations	83502	NYISO Cost Of Operations
Residuals Balancing	81302	Balancing Market Energy Residual
Residuals Balancing	81304	Balancing Market Loss Residual
Residuals Balancing	81305	Balancing Market Congestion Balancing
Residuals Balancing	81306	Emergency Energy Purchases
Residuals Balancing	81307	Emergency Energy Sales
Residuals Balancing	81309	Balancing Market Energy Residual
Residuals Balancing	81311	Balancing Market Loss Residual
Residuals Balancing	81312	Balancing Market Congestion Balancing
Residuals Balancing	81313	Emergency Energy Purchases
Residuals Balancing	81314	Emergency Energy Sales
Residuals DAM	81301	Day Ahead Market Energy Residual
Residuals DAM	81303	Day Ahead Market Loss Residual
Residuals DAM	81308	Day Ahead Market Energy Residual
Residuals DAM	81310	Day Ahead Market Loss Residual