

2009 Transmission District Weather Response Analyses

LFTF

December 7, 2009

**Arthur Maniaci
System & Resource Planning
New York Independent System Operator**

Summary of NYISO Review of TO Weather Adjusted Peaks

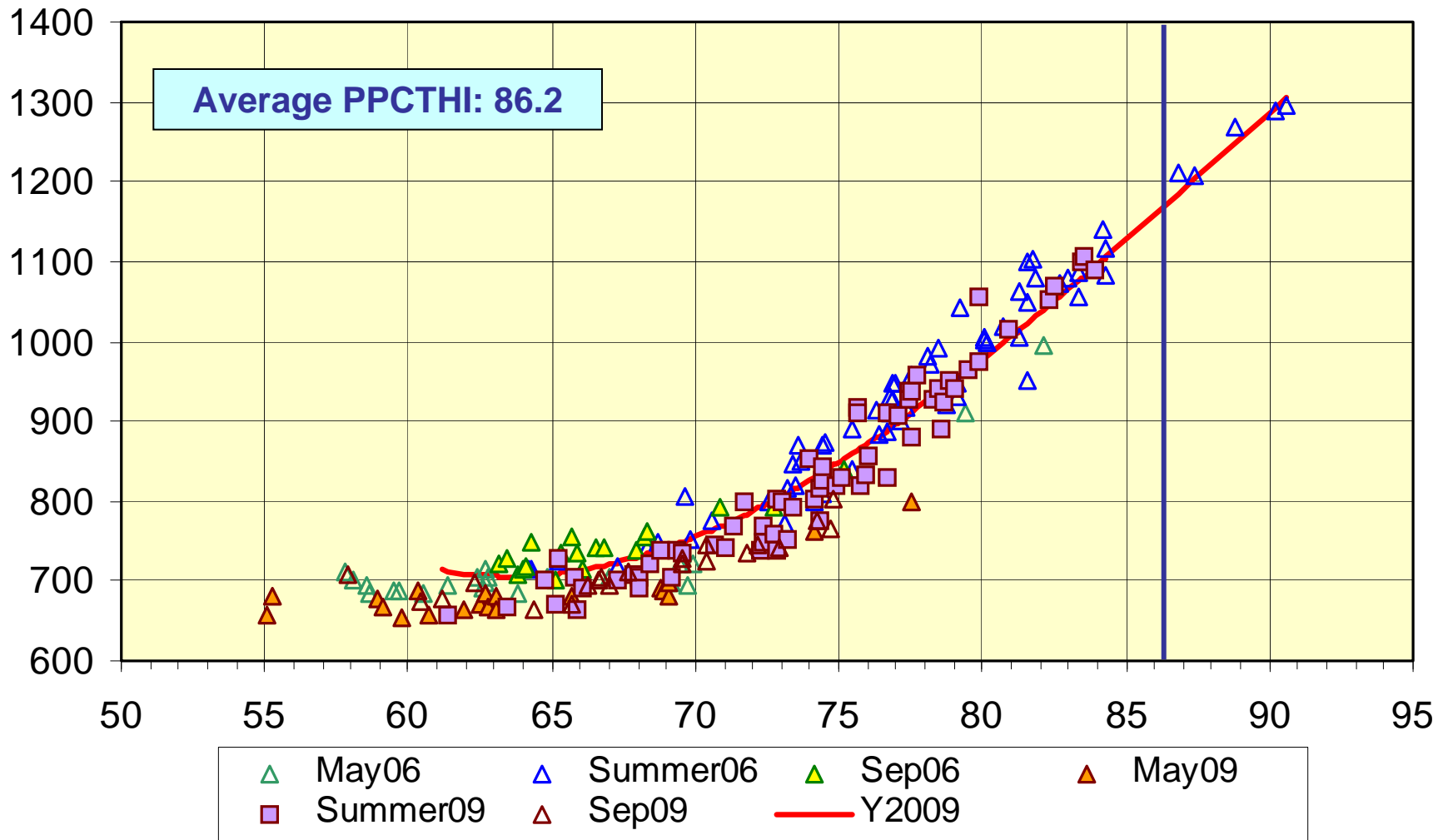
Transmission District	Central Hudson	Con Ed	LIPA	NYSEG	NYPA	National Grid	O&R	RG&E
TO's Daily Max MW	1107.0	11937.2	4906	2813.4	314.0	6194.0	999.5	1548.8
Actual CTHI or TV	83.5	81.3	83.1	81.4	83.9	82.7	83.4	82.7
Model MW at Actual CTHI	1080.8	11985.4	4953	2813.5	310.9	6189.8	974.0	1523
Design CTHI or TV	86.2	86.2	84.6	82.1	81.5	82.2	86.4	84.9
Model MW at Design CTHI	1164.8	13613.0	5186.9	2889.0	309.6	6111.6	1100.2	1633.3
NYCA Coincident Actual Peak MW	1097.0	11924.6	4940	2811.6	310.4	6193.0	995.3	1548.8
NYISO's Weather Adjustment - MW	84.0	1627.6	233.7	75.5	-1.3	-78.2	126.2	110.8
NYISO's Weather Adjusted MW	1181.0	13552.2	5173.7	2887.1	309.1	6114.8	1121.5	1633.3
TO's Weather Adjustment - MW	80.0	1656.0	188	75.6	-2.8	-22.0	157.0	76.9
TO's Weather Adjusted Peak MW	1177.0	13580.6	5128	2887.2	307.6	6171.0	1152.3	1625.7
Percent Difference - Peak MW	0.3%	0.2%	0.9%	0.0%	0.5%	0.9%	2.7%	0.5%
Percent Difference - MW Adjustment	4.9%	1.7%	21.7%	0.1%	73.2%	112.2%	21.8%	36.1%

O&R & Con-Ed adjustments are at 67th percentile; all others are at 50th percentile of design conditions.

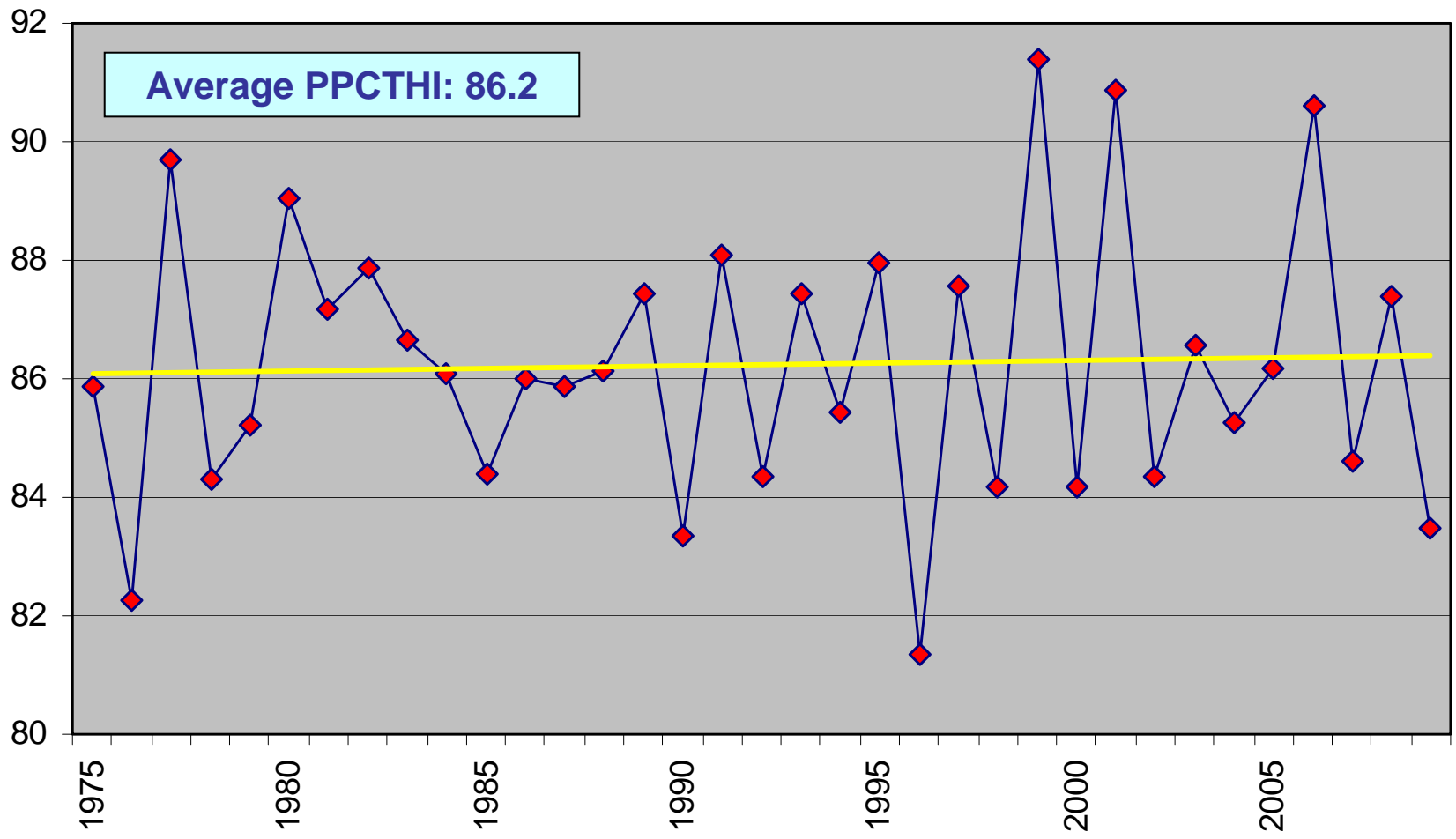
All adjustments meet Load Forecasting Manual criteria.

Central Hudson: May-Sep Weekdays, 06 & 09

MW vs CTHI

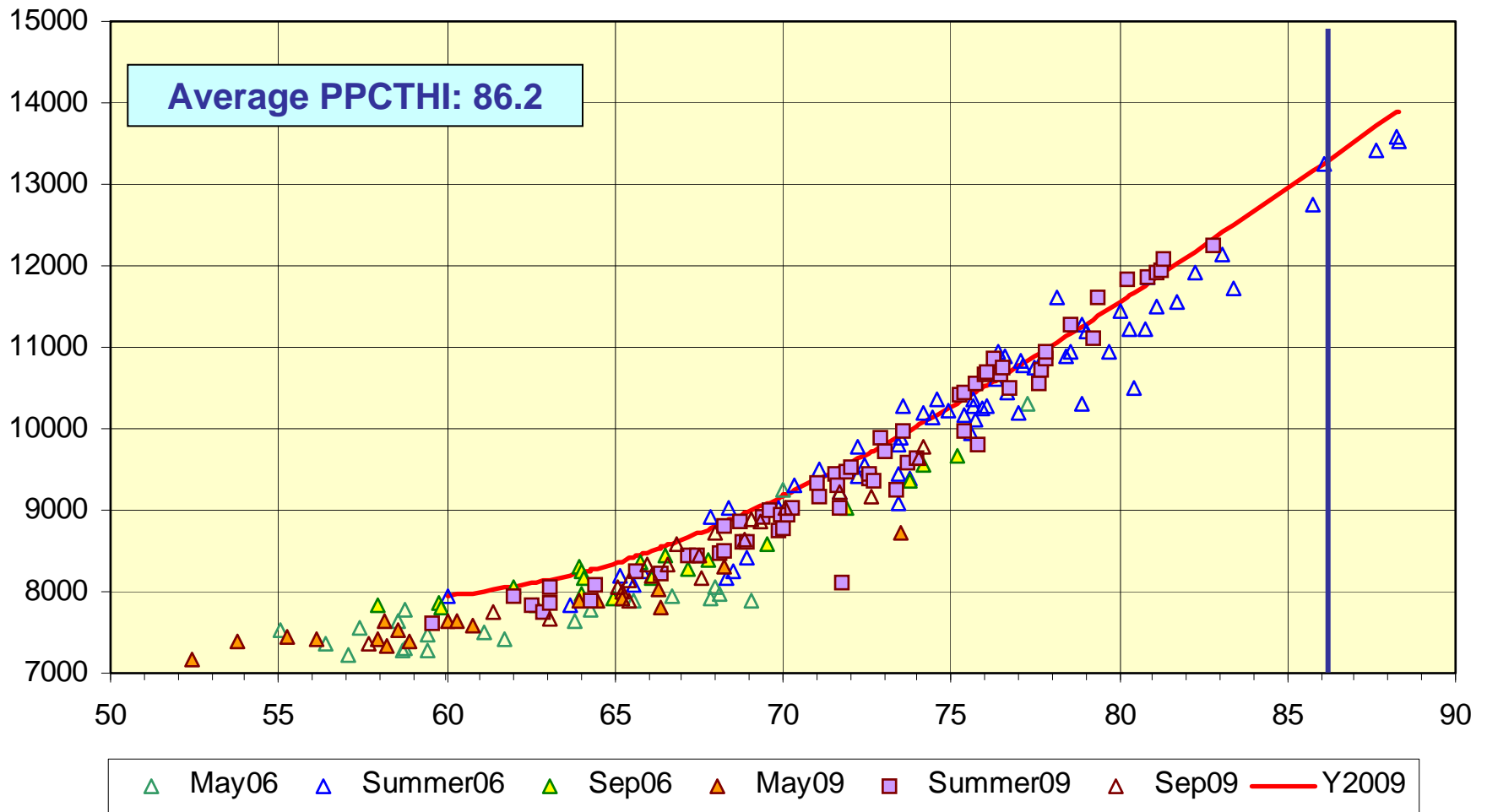


Central Hudson Peak-Producing CTHI 1975 to 2009

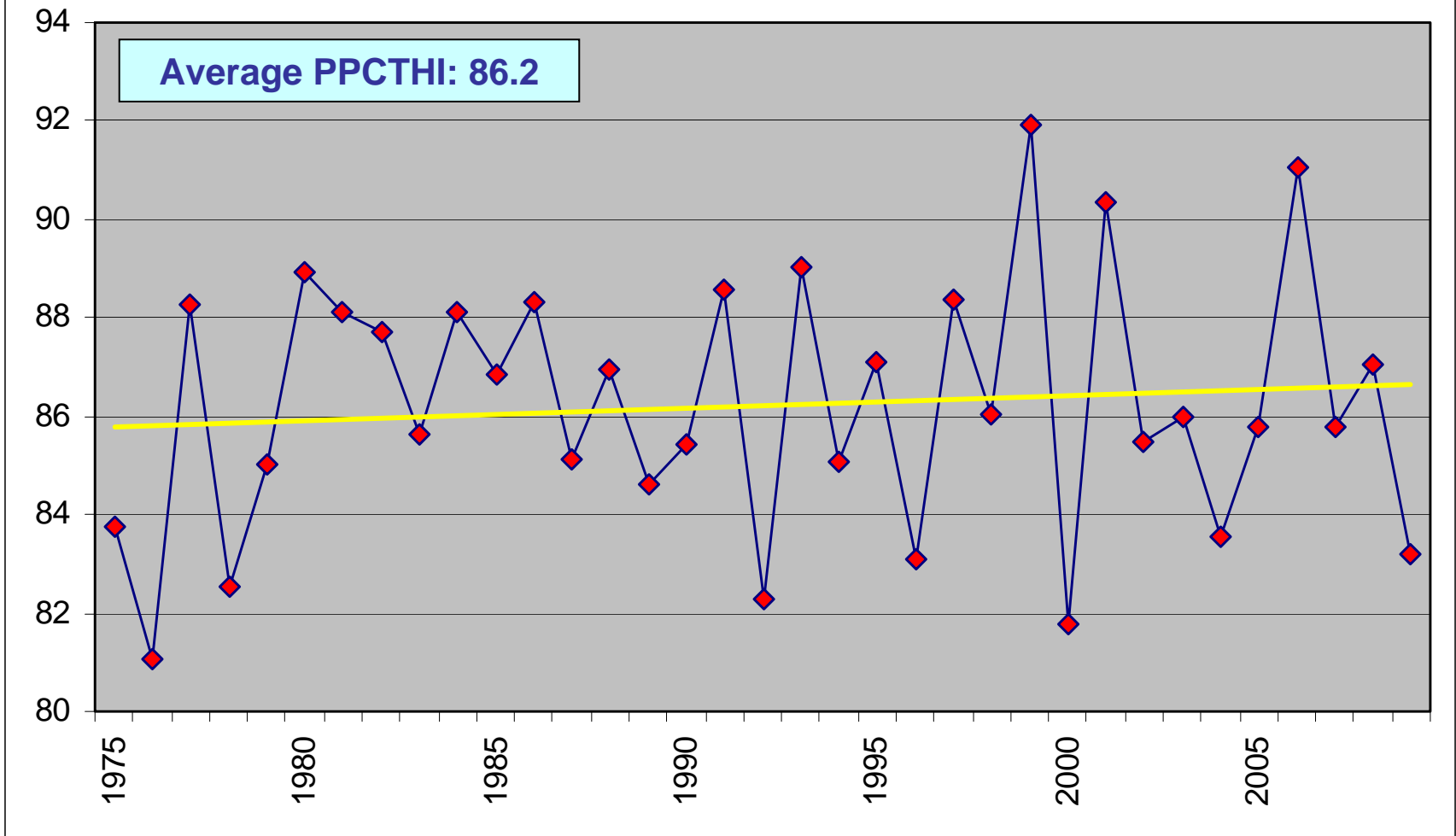


Con-Ed: May-Sep Weekdays, 06 & 09

MW vs TV

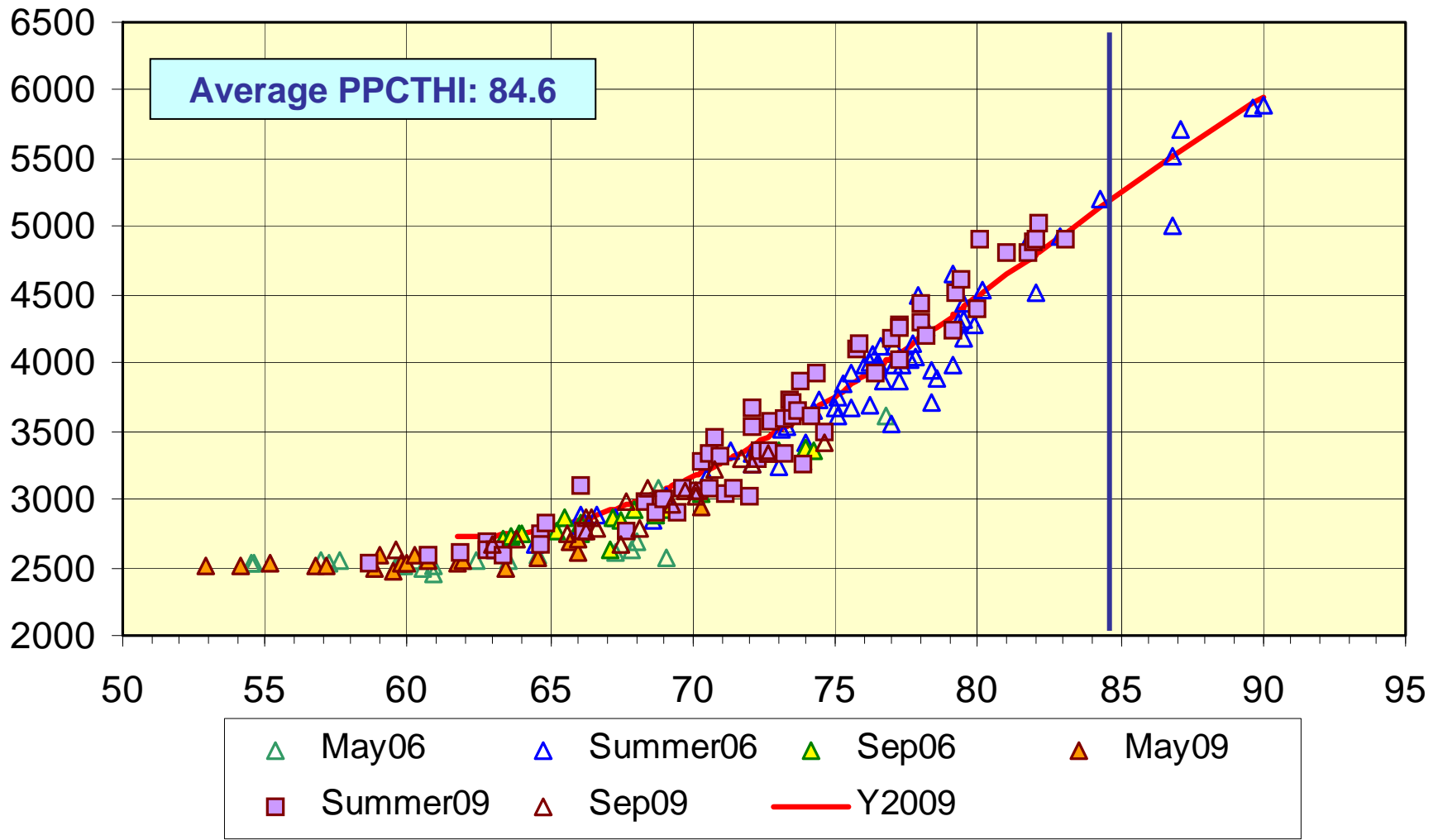


Con-Ed Peak-Producing CTHI 1975 to 2009

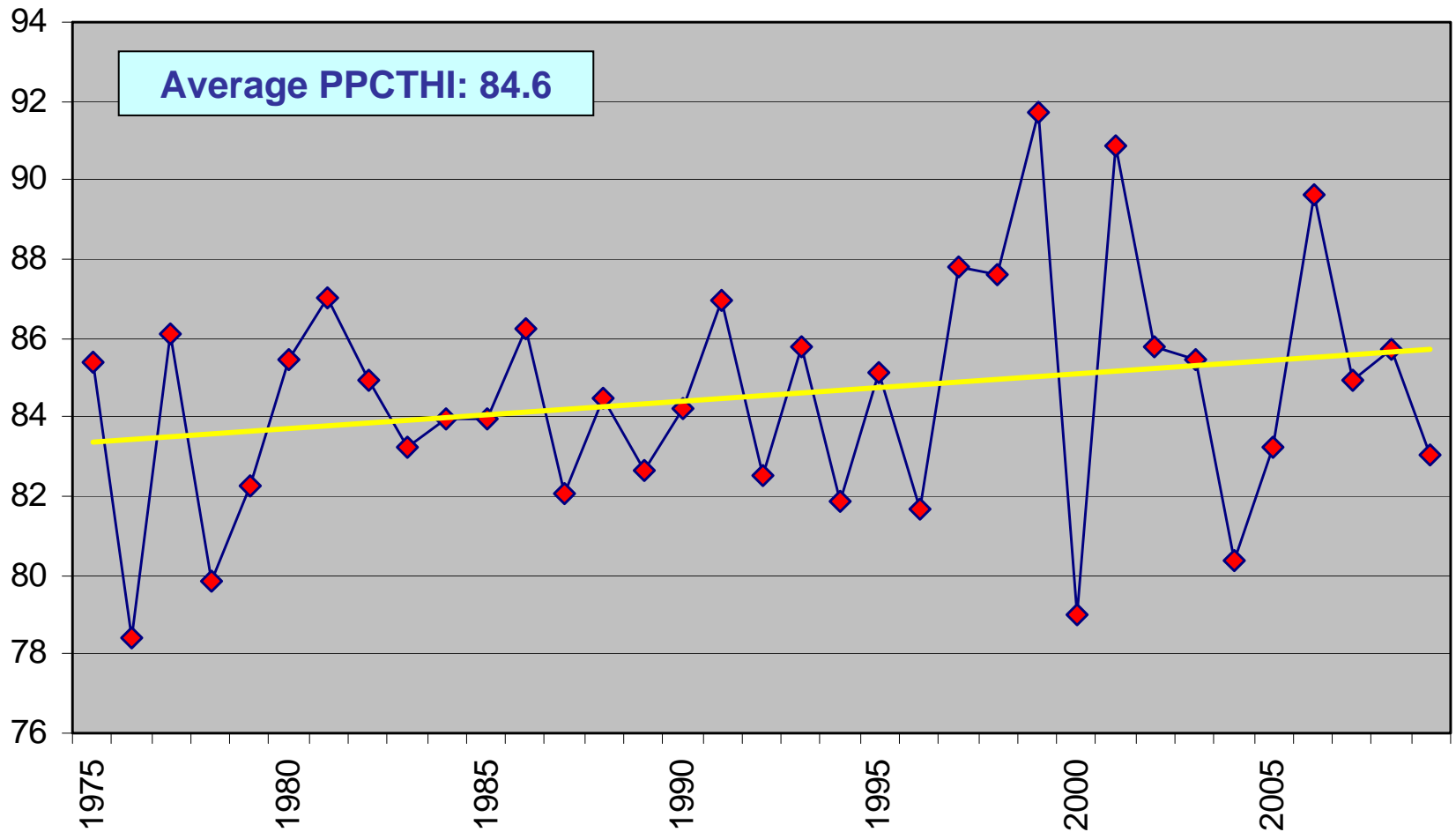


LIPA: May-Sep Weekdays, 06 & 09

MW vs CTHI

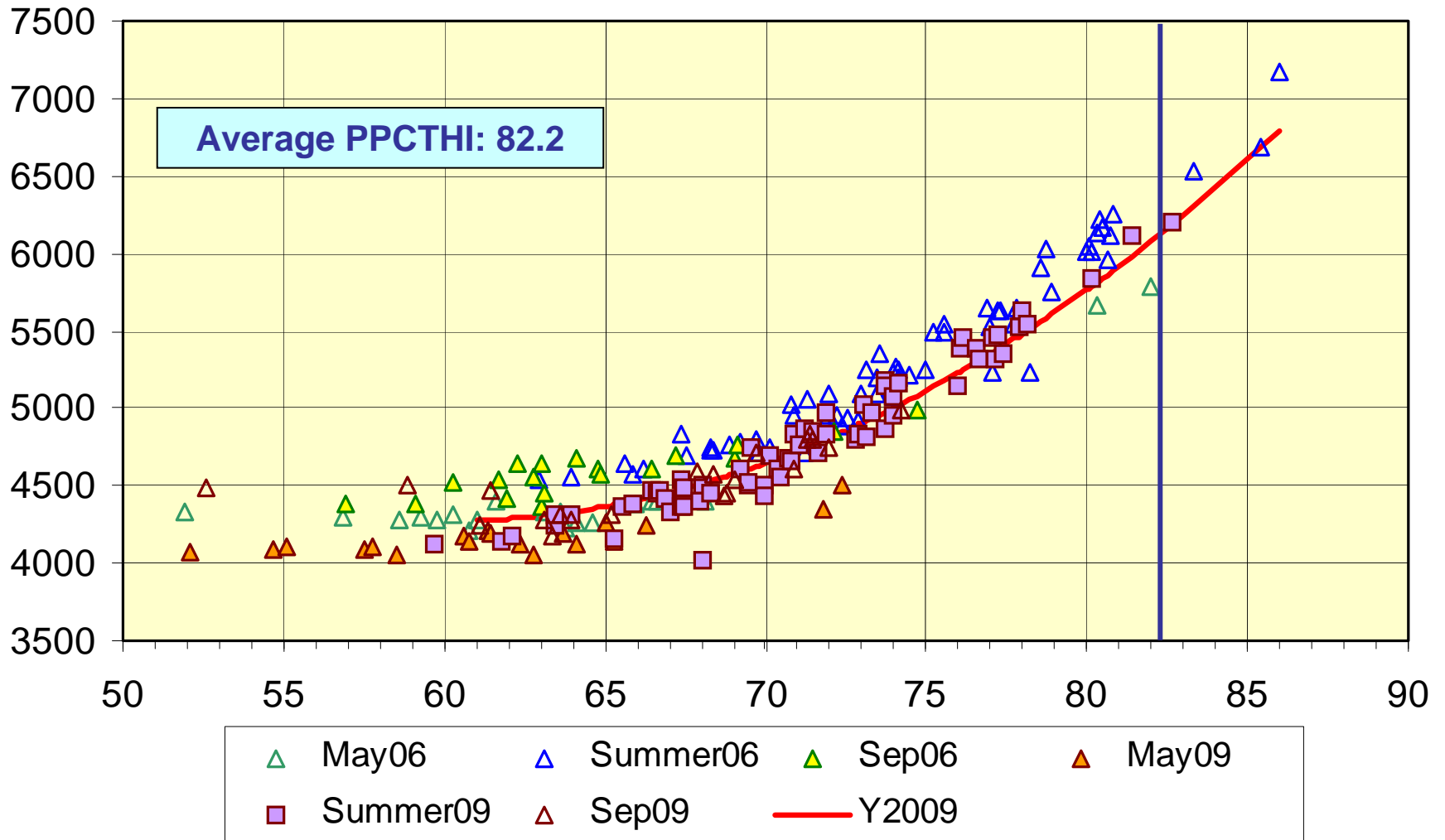


LIPA Peak-Producing CTHI 1975 to 2009

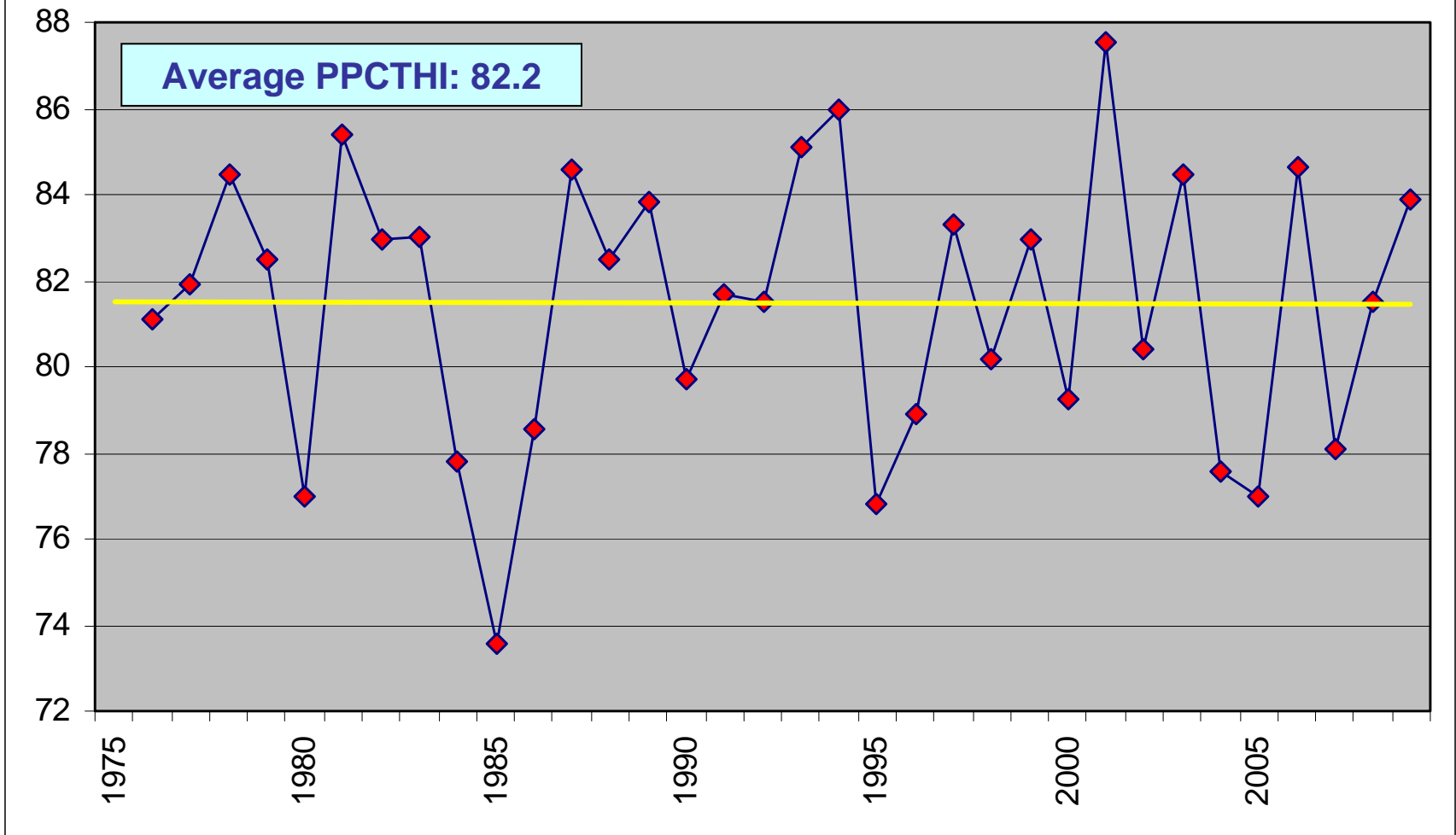


N-Grid: May-Sep Weekdays, 06 & 09

MW vs CTHI

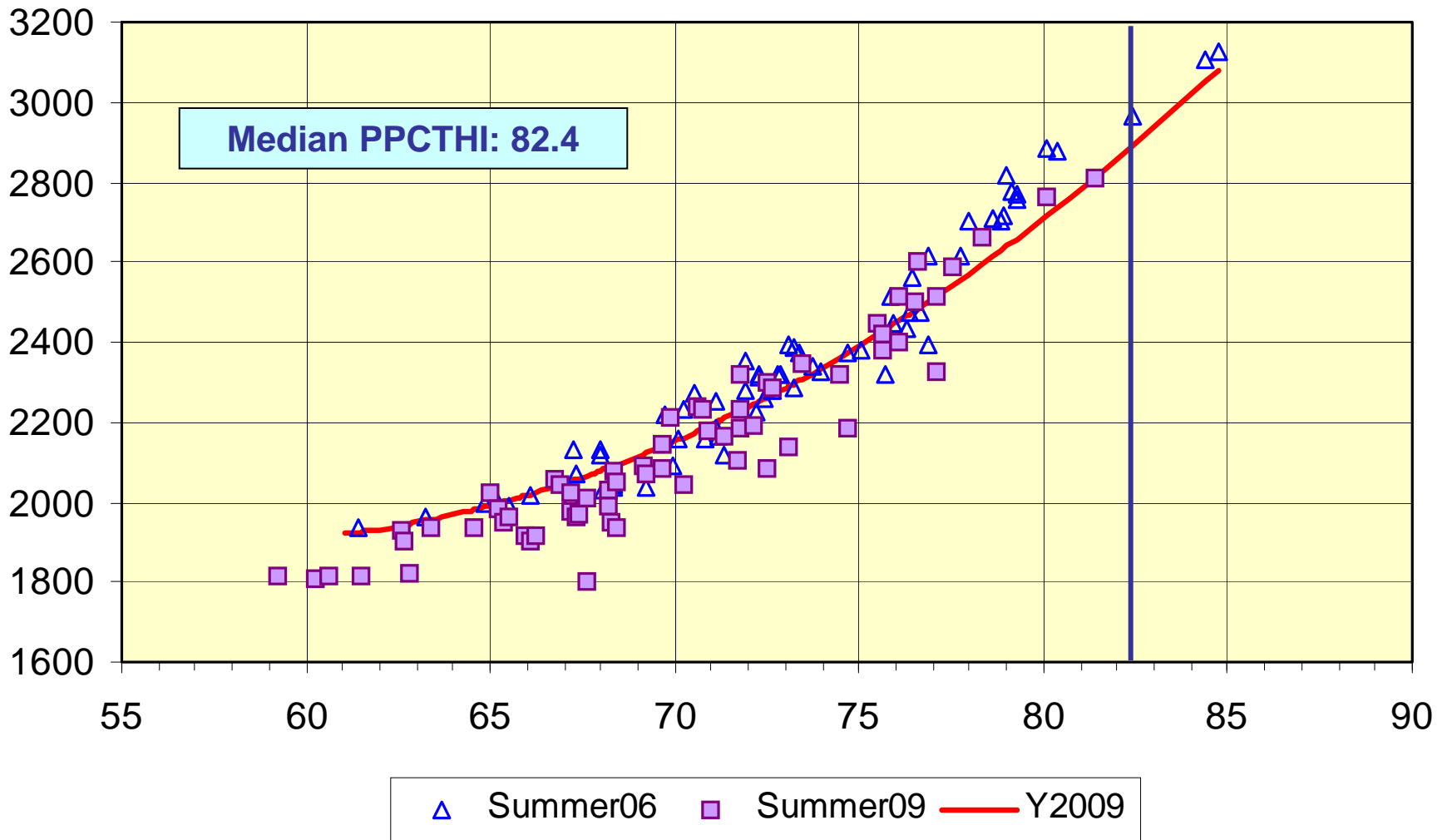


NYPA Peak-Producing CTHI 1976 to 2009

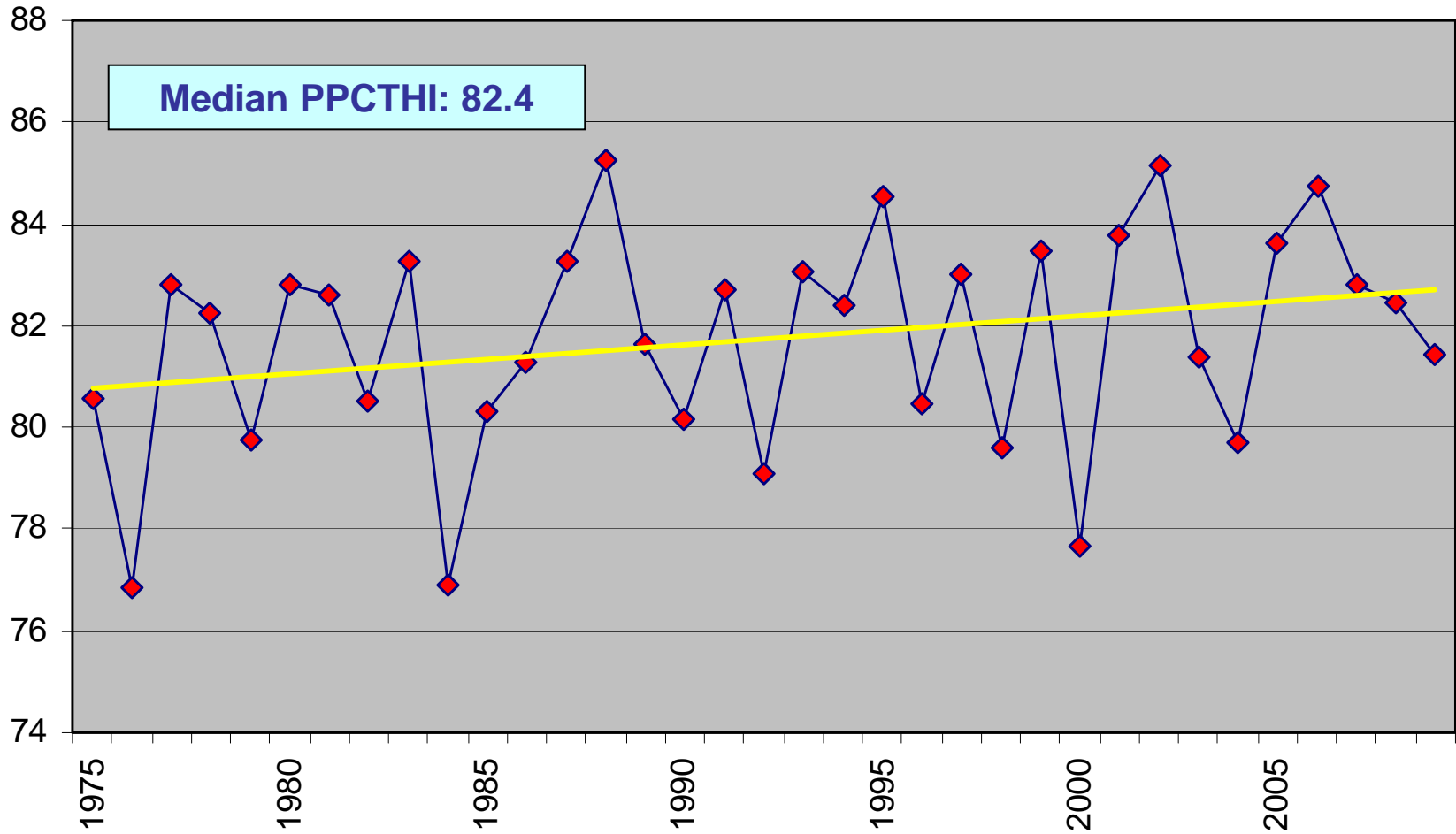


NYSEG: Jun-Aug Weekdays, 06 & 09

MW vs CTHI

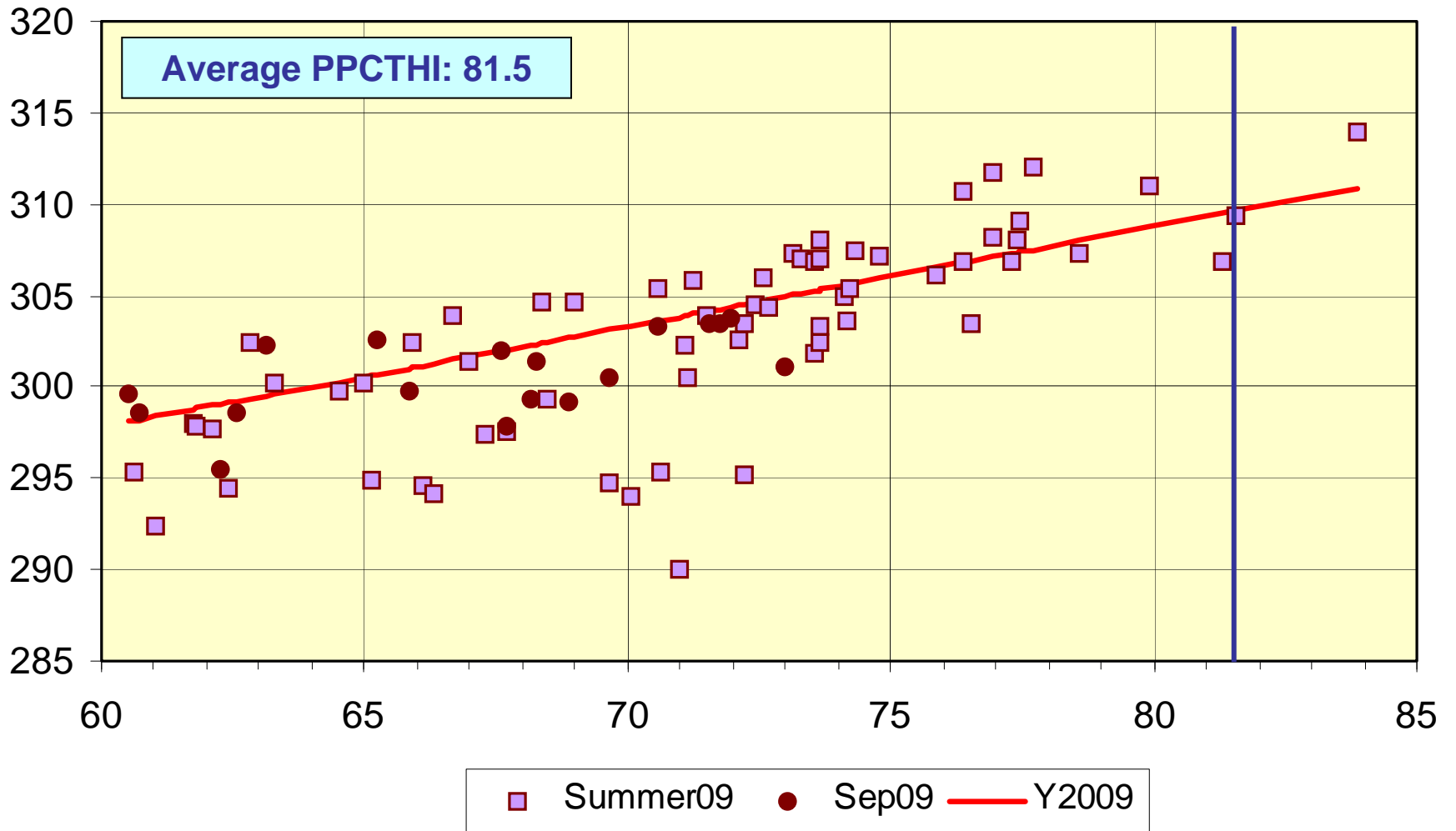


NYSEG Peak-Producing CTHI 1975 to 2009

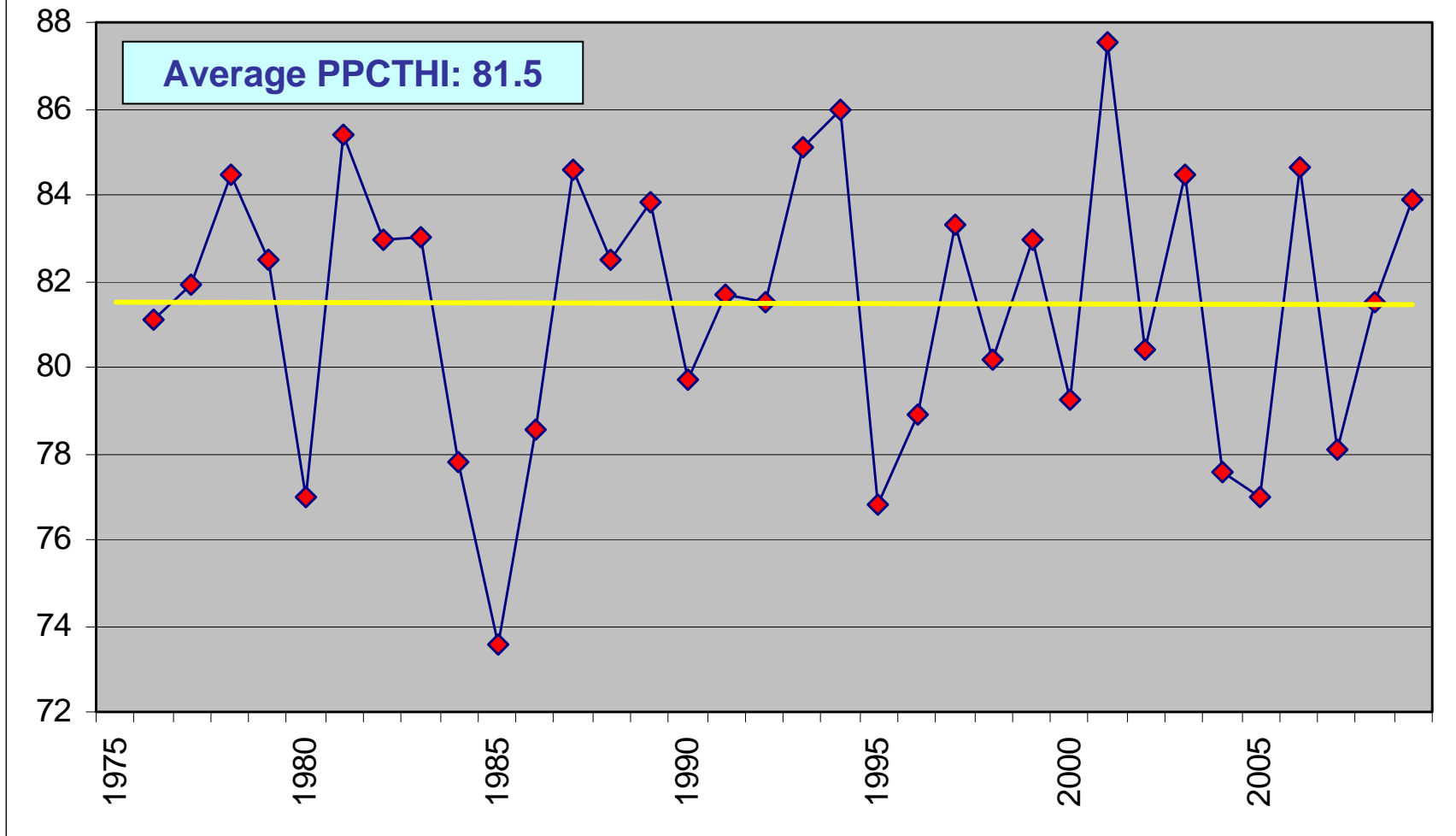


NYPA: June -Sep Weekdays, 2009

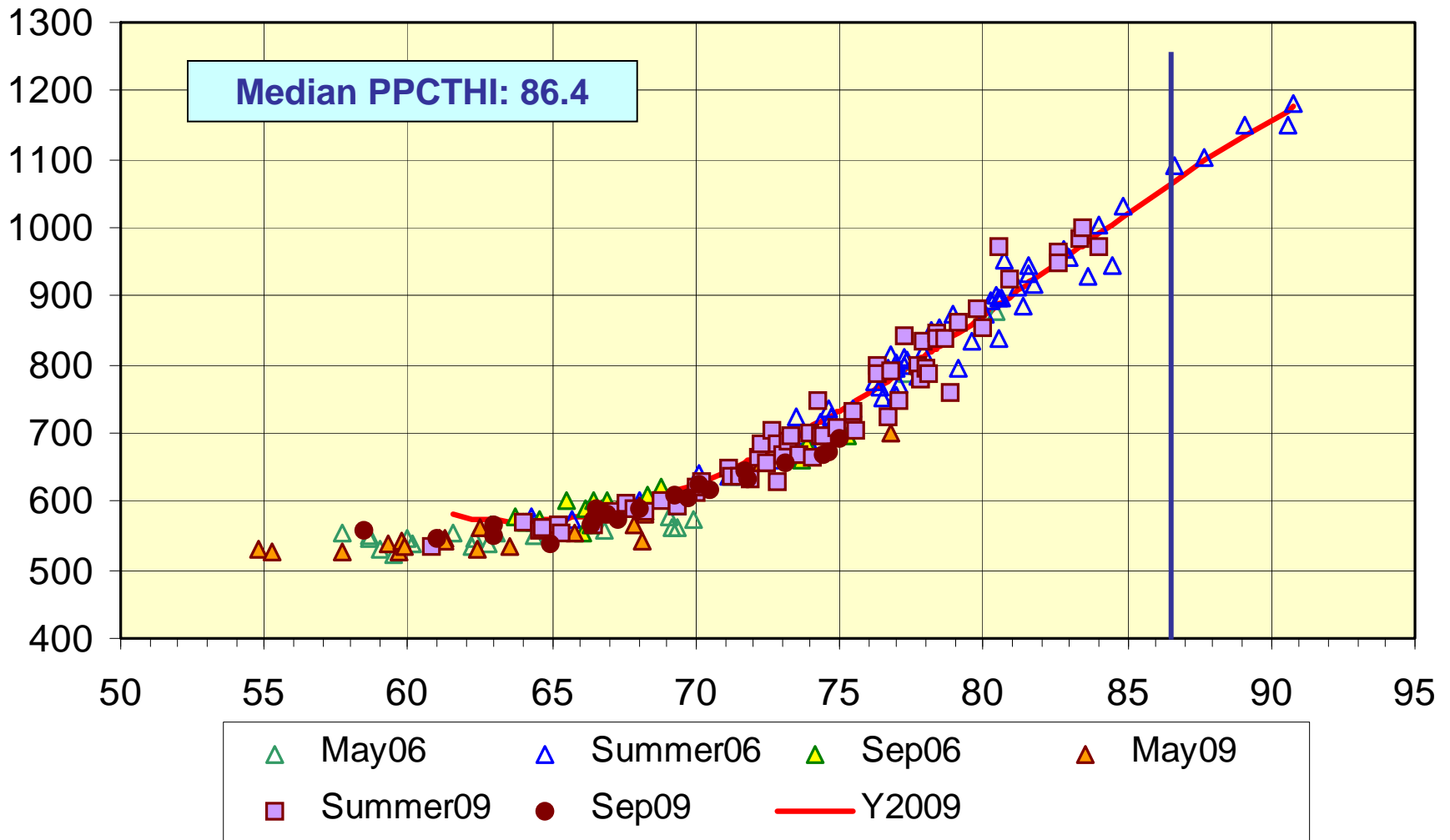
MW vs CTHI



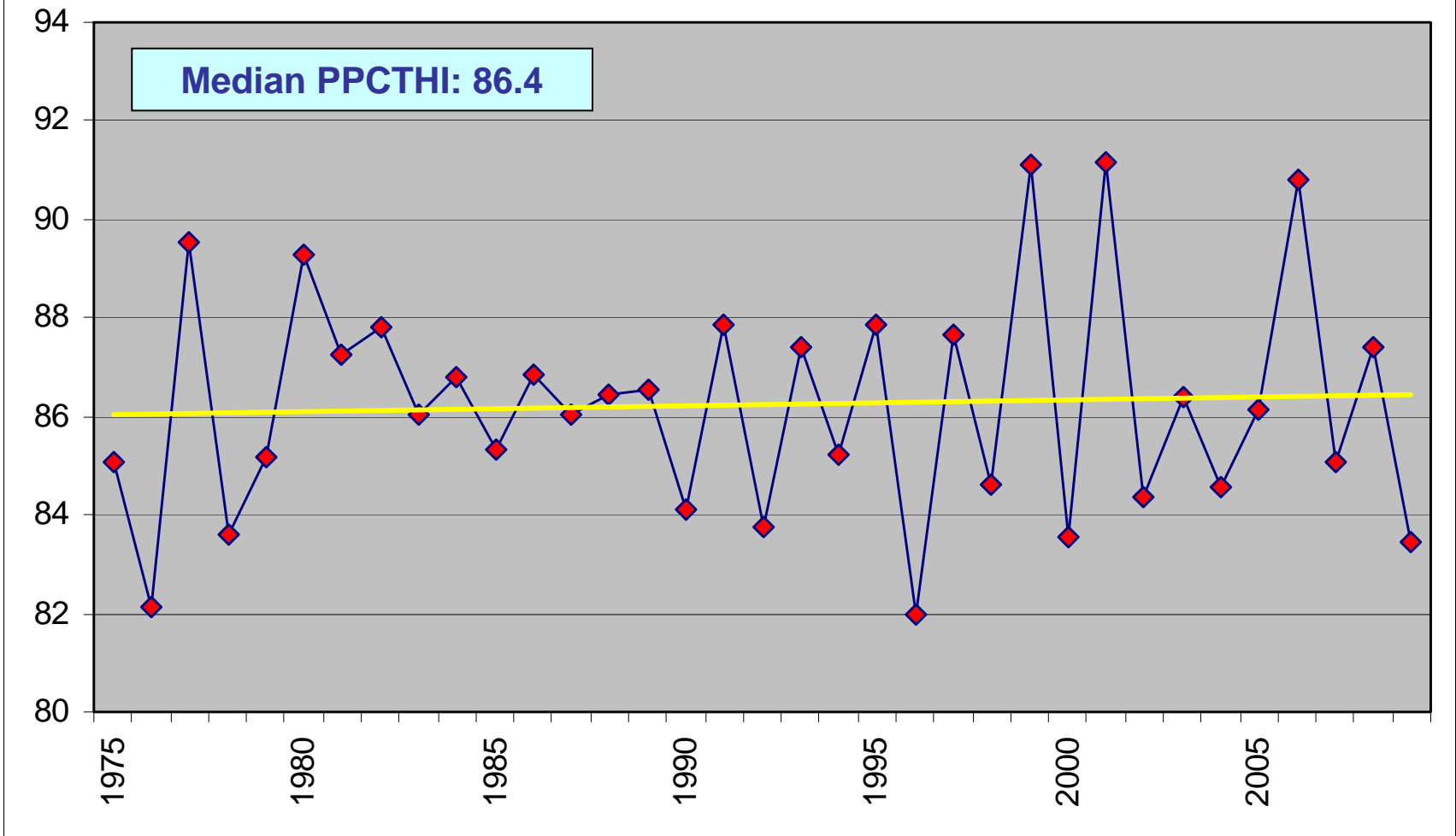
NYPA Peak-Producing CTHI 1976 to 2009



O&R: May-Sep Weekdays, 06 & 09 MW vs CTHI

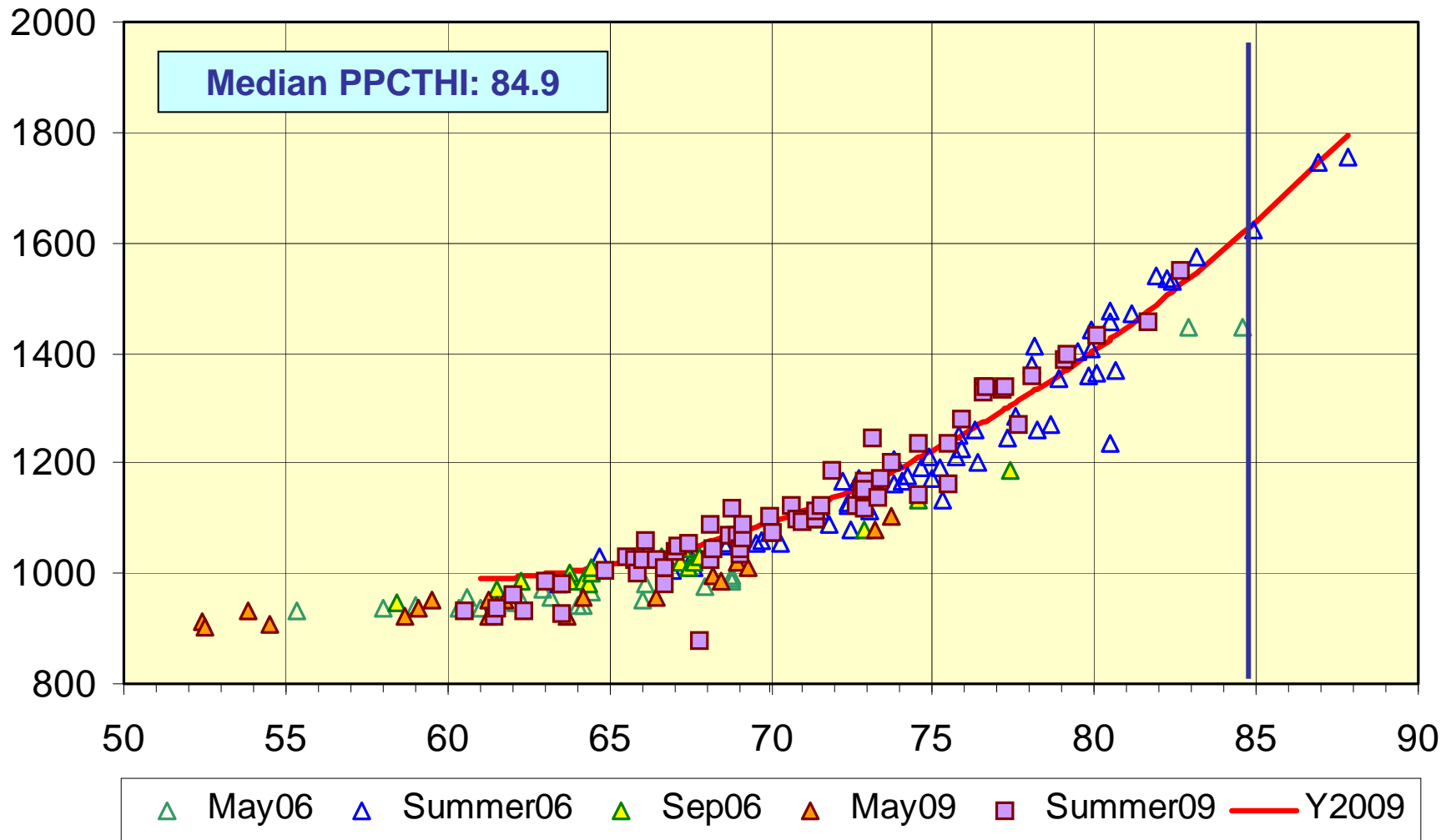


O&R Peak-Producing CTHI 1975 to 2009

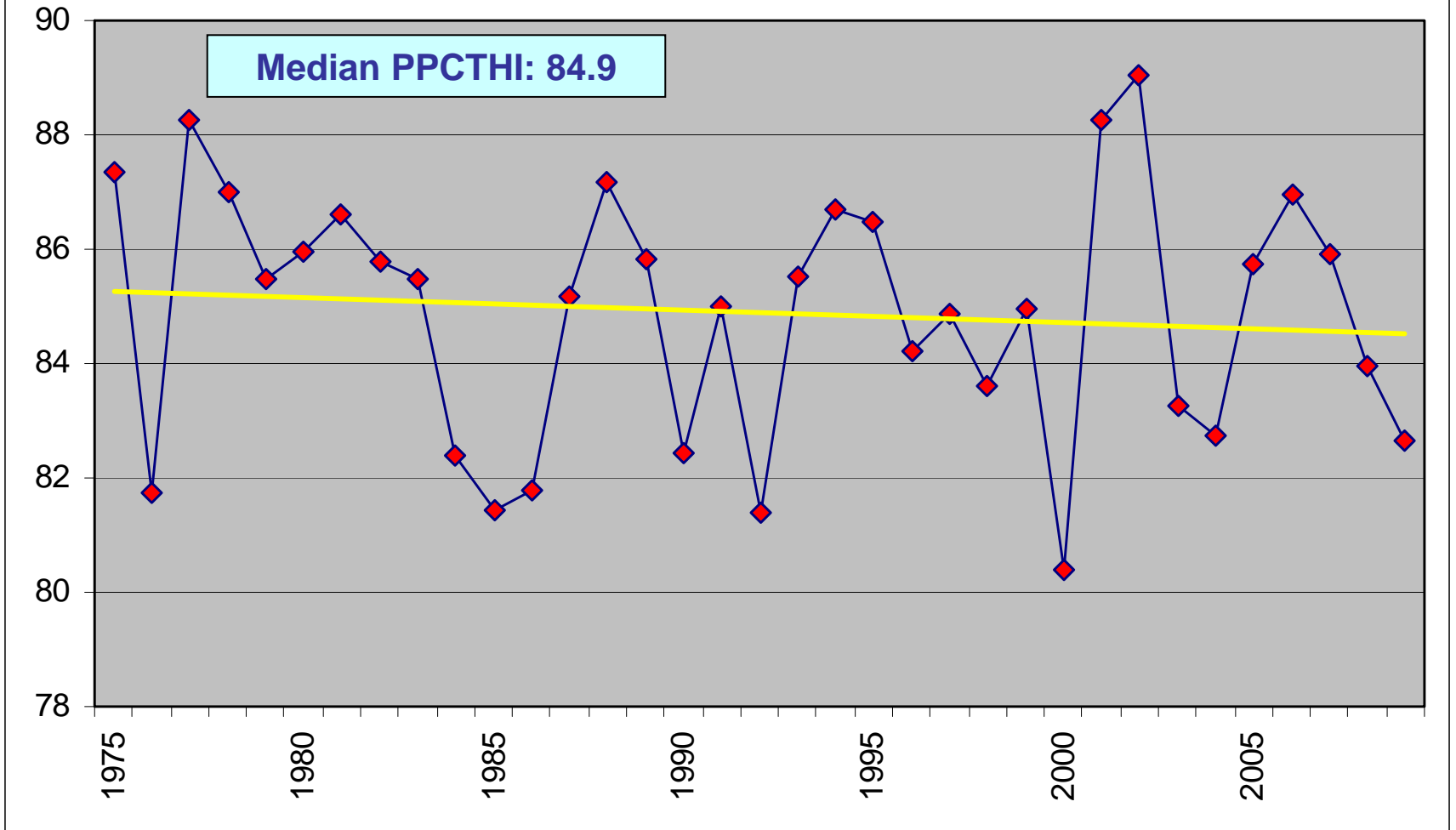


RG&E: May-Sep Weekdays, 06 & 09

MW vs CTHI



RG&E Peak-Producing CTHI 1975 to 2009



The New York Independent System Operator (NYISO) is a not-for-profit corporation that began operations in 1999. The NYISO operates New York's bulk electricity grid, administers the state's wholesale electricity markets, and performs comprehensive reliability and resource planning for the state's bulk electricity system.

www.nyiso.com