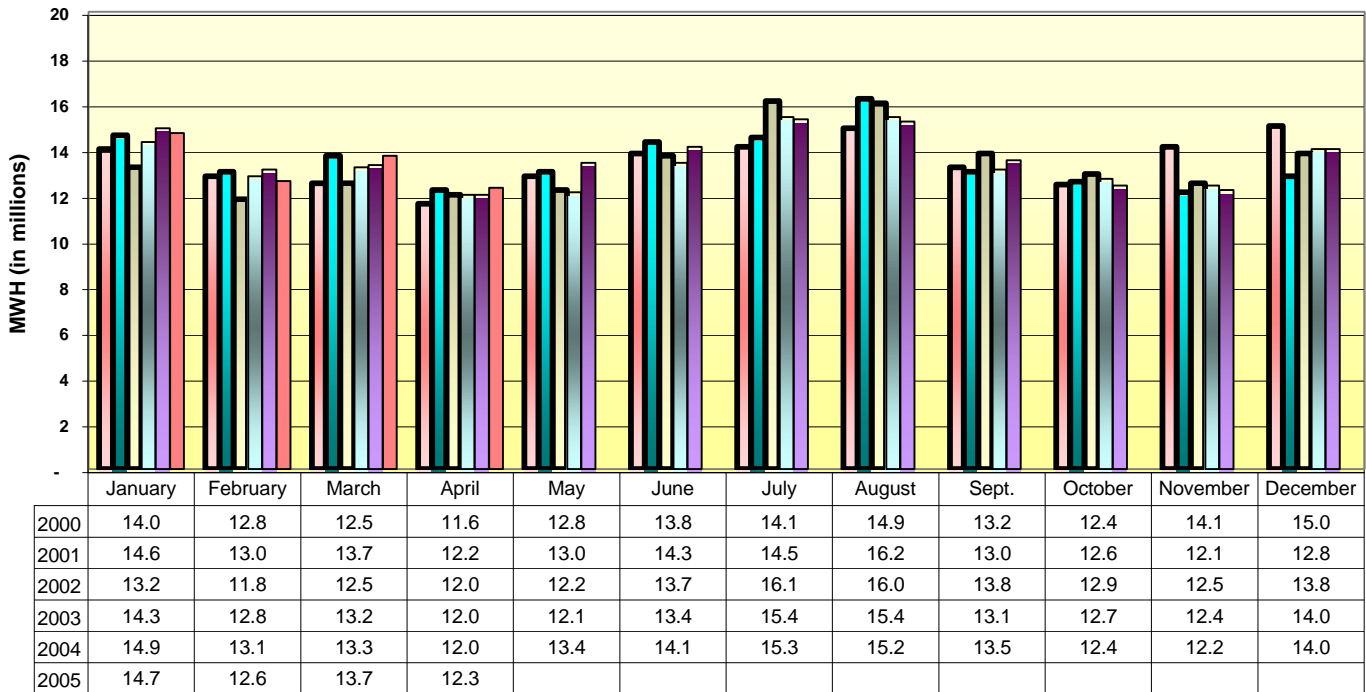


**NYISO  
BSP SUBCOMMITTEE  
JUNE 1, 2005**

**Load Comparison - By Month  
2000 - 2005**



■ 2000 
 ■ 2001 
 ■ 2002 
 ■ 2003 
 ■ 2004 
 ■ 2005

**2005 Load Comparison: Forecast vs. Actual**

Invoice Month	Forecast Load	Actual Load	Monthly Differential	Cumulative Differential	Cumulative \$ Impact (in millions)
	<i>(millions of MWH)</i>				<i>Over/(Under)</i>
Jan	15.0	14.7	(0.3)	(0.3)	\$ (0.3)
Feb	13.1	12.6	(0.5)	(0.8)	\$ (0.6)
Mar	13.3	13.7	0.4	(0.4)	\$ (0.3)
Apr	12.0	12.3	0.3	(0.1)	\$ (0.1)
May	13.4				\$ (0.1)
Jun	14.1				\$ (0.1)
Jul	15.2				\$ (0.1)
Aug	15.2				\$ (0.1)
Sep	13.5				\$ (0.1)
Oct	12.4				\$ (0.1)
Nov	12.4				\$ (0.1)
Dec	14.1				\$ (0.1)
<b>Total</b>	<b>163.7</b>	<b>53.3</b>	<b>(0.1)</b>		<b>\$ (0.1)</b>

**Note:** ~\$2M remains from 2004 overcollections on RS1 transactions. This disposition of these funds will be revisited after summer 2005.