

Operations Performance Metrics Monthly Report



August 2011 Report

Operations & Reliability Department New York Independent System Operator

Prepared by NYISO Operations Analysis and Services, based on settlements initial invoice data collected on or before September 9, 2011.

Table of Contents

- ◆ **Highlights**
 - *Operations Performance*

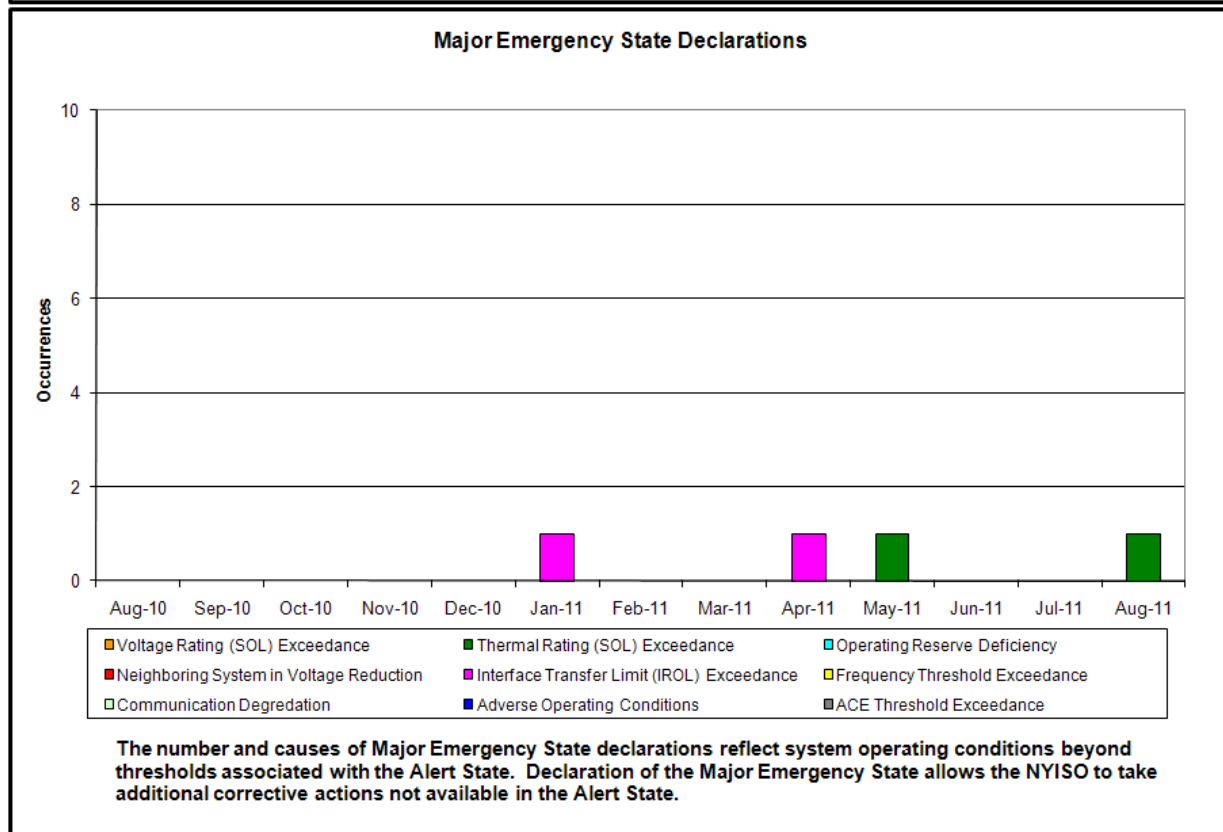
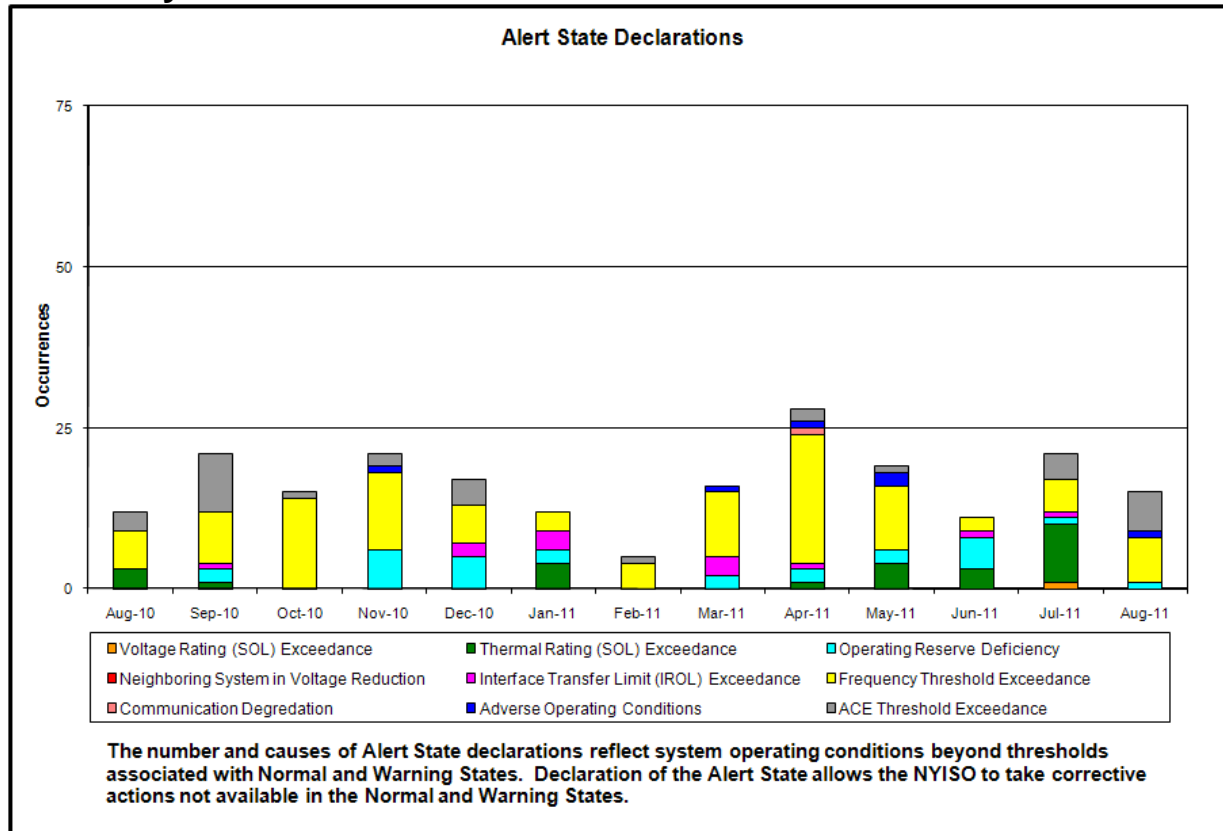
- ◆ **Reliability Performance Metrics**
 - *Alert State Declarations*
 - *Major Emergency State Declarations*
 - *IROL Exceedance Times*
 - *Balancing Area Control Performance*
 - *Reserve Activations*
 - *Disturbance Recovery Times*
 - *Load Forecasting Performance*
 - *Wind Forecasting Performance*
 - *Lake Erie Circulation and ISO Schedules*

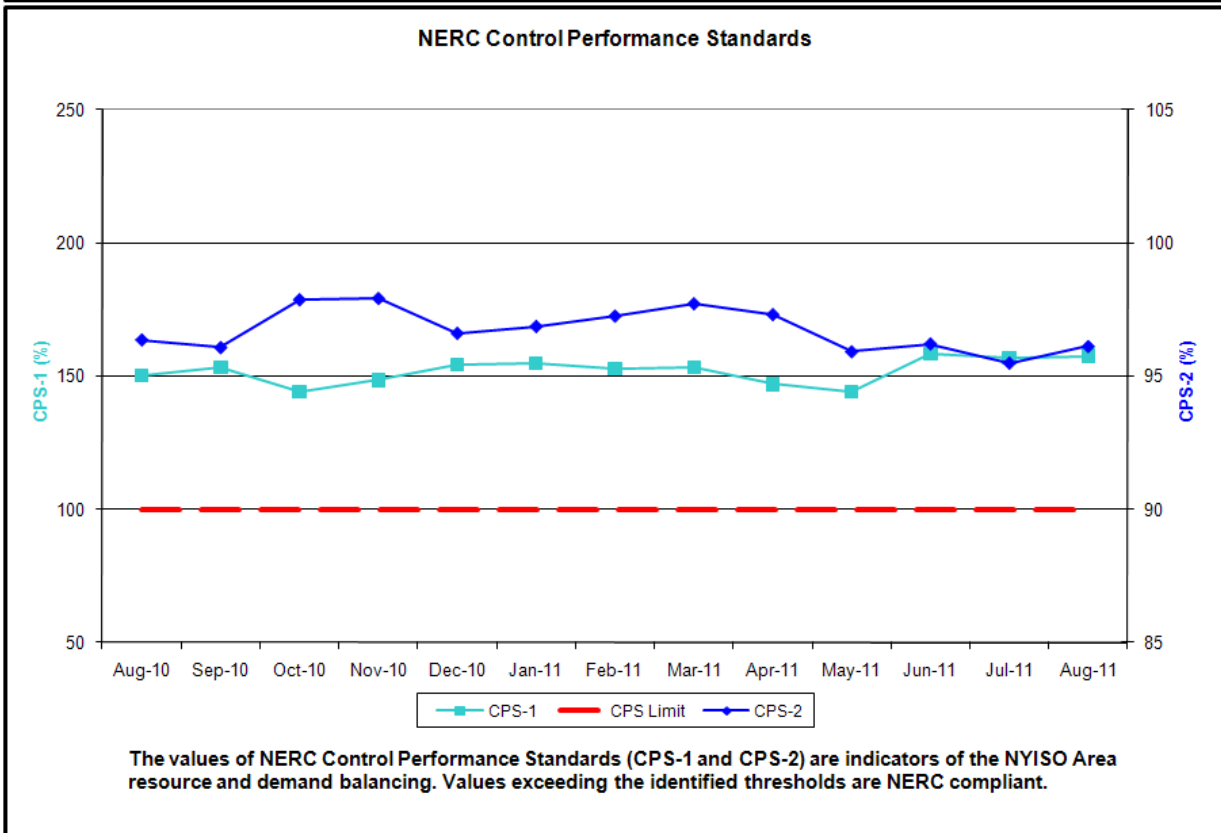
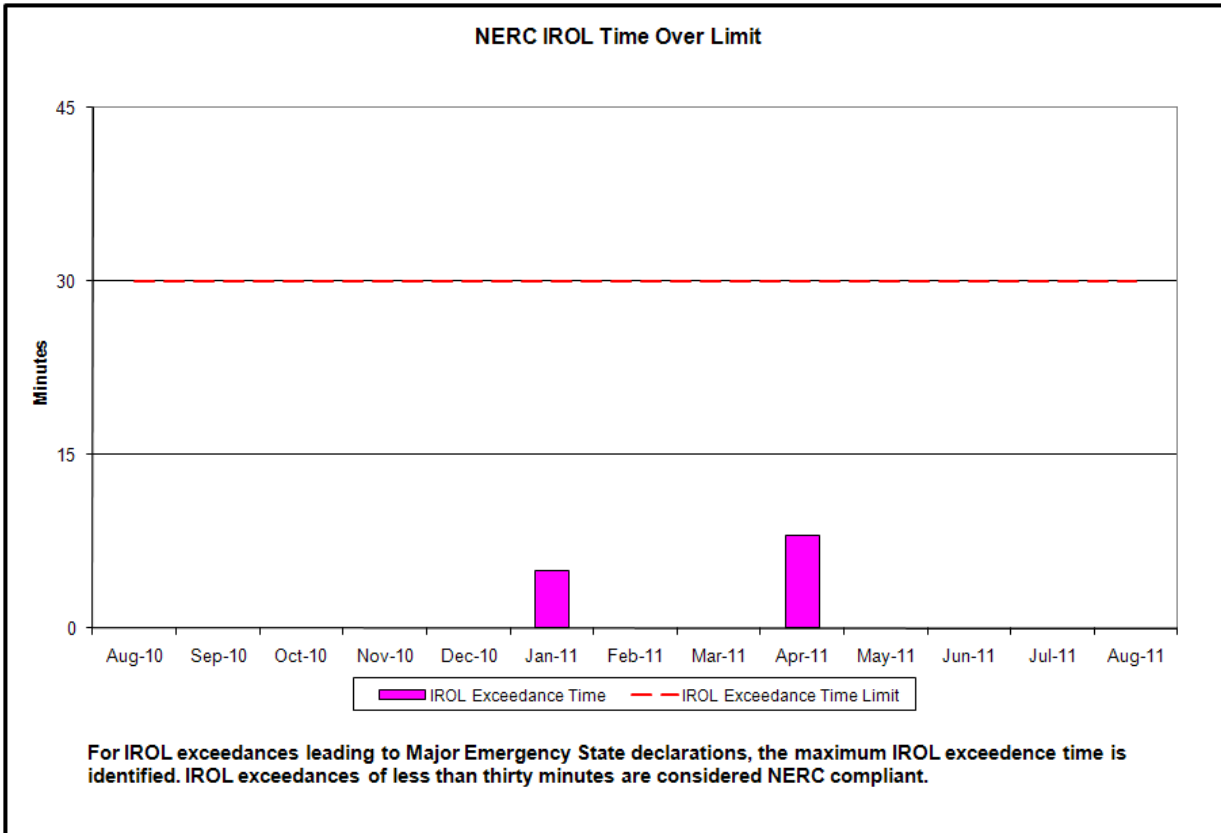
- ◆ **Market Performance Metrics**
 - *RTM Congestion Residuals Monthly Trend*
 - *RTM Congestion Residuals Daily Costs*
 - *RTM Congestion Residuals Event Summary*
 - *RTM Congestion Residuals Cost Categories*
 - *DAM Congestion Residuals Monthly Trend*
 - *DAM Congestion Residuals Daily Costs*
 - *DAM Congestion Residuals Cost Categories*
 - *NYCA Unit Uplift Components Monthly Trend*
 - *NYCA Unit Uplift Components Daily Costs*
 - *ICAP Spot Market Clearing Price*
 - *UCAP Awards*

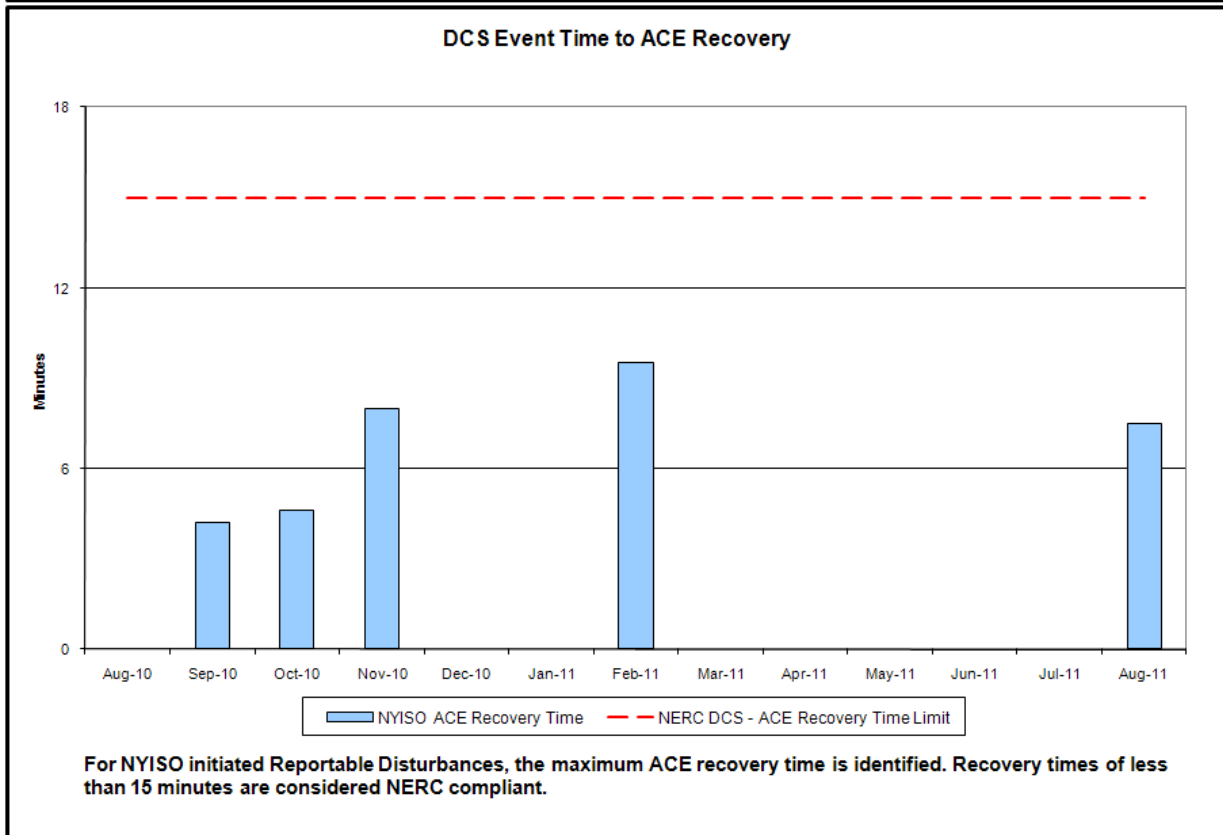
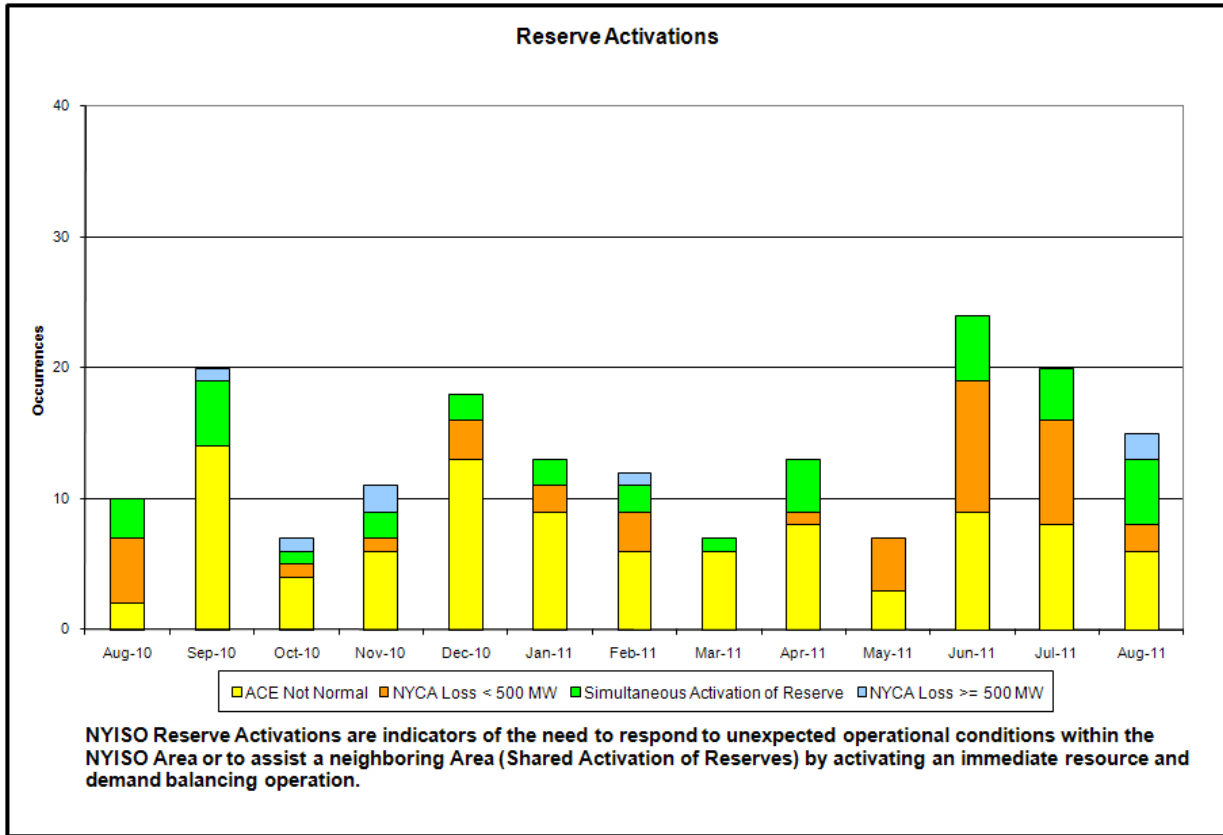
August 2011 Operations Performance Highlights

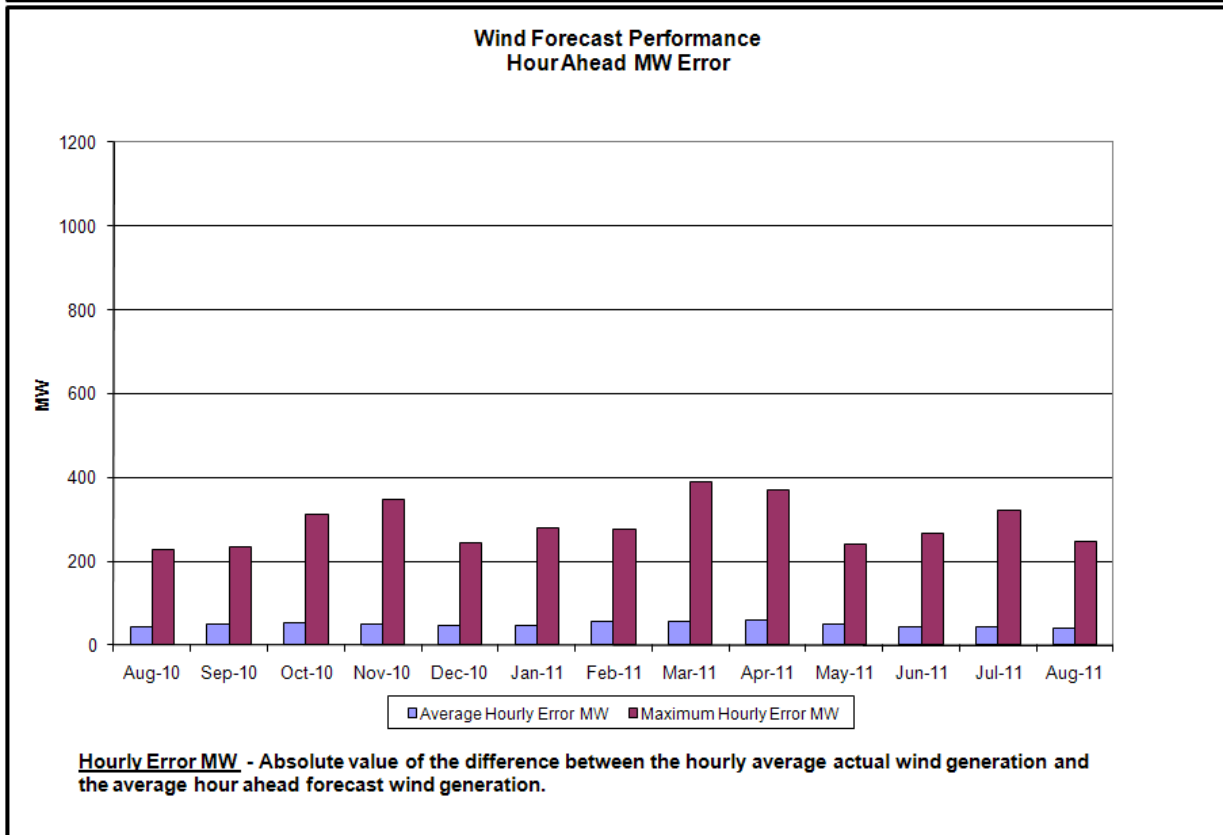
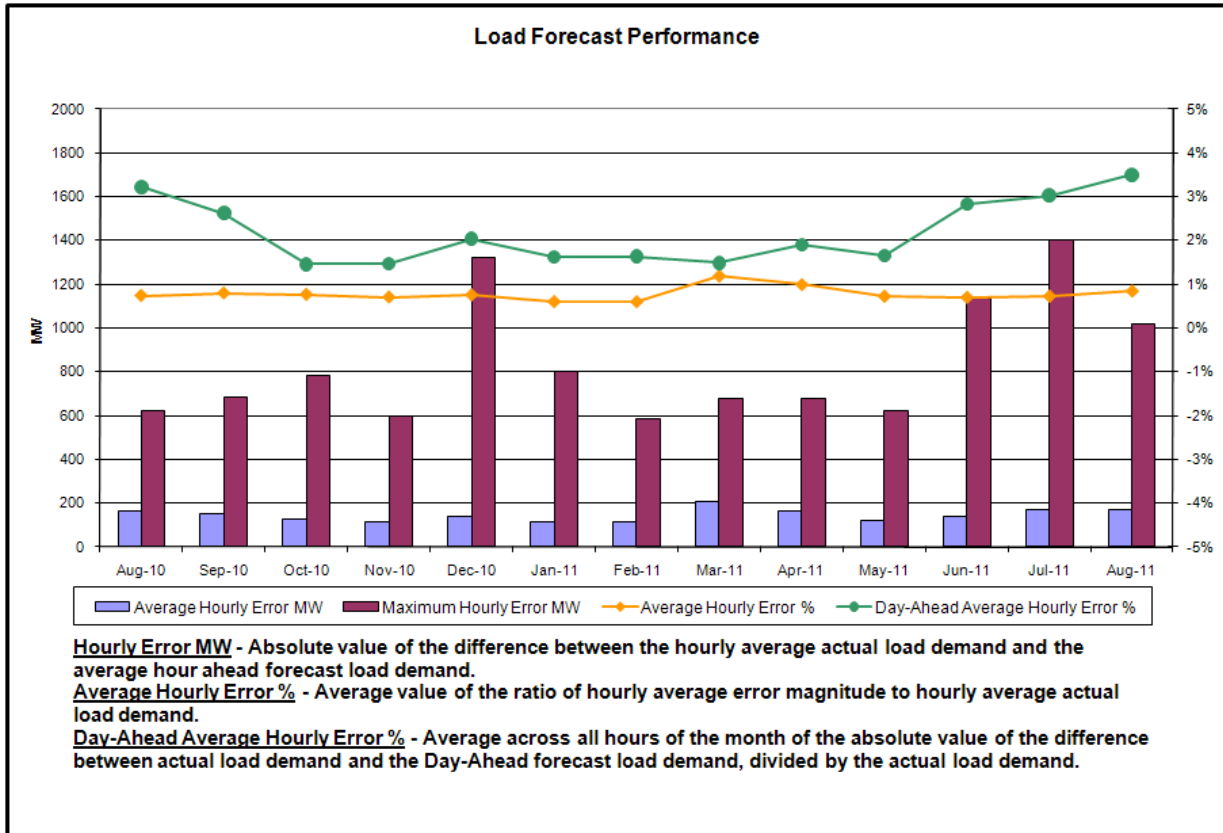
- Peak load of 30,403 MW occurred on 8/1/2011 HB 15
- All-time summer capability period peak load of 33,939 MW occurred on 8/2/2006 HB13
- 88 hours of Thunder Storm Alerts were declared
- **Continued Levels of Clockwise Lake Erie Loop Flows**
 - 33 hours of NERC TLR level 3 curtailments
- Simultaneous, Beck – Niagara and Beck – Packard outages expected in Q4

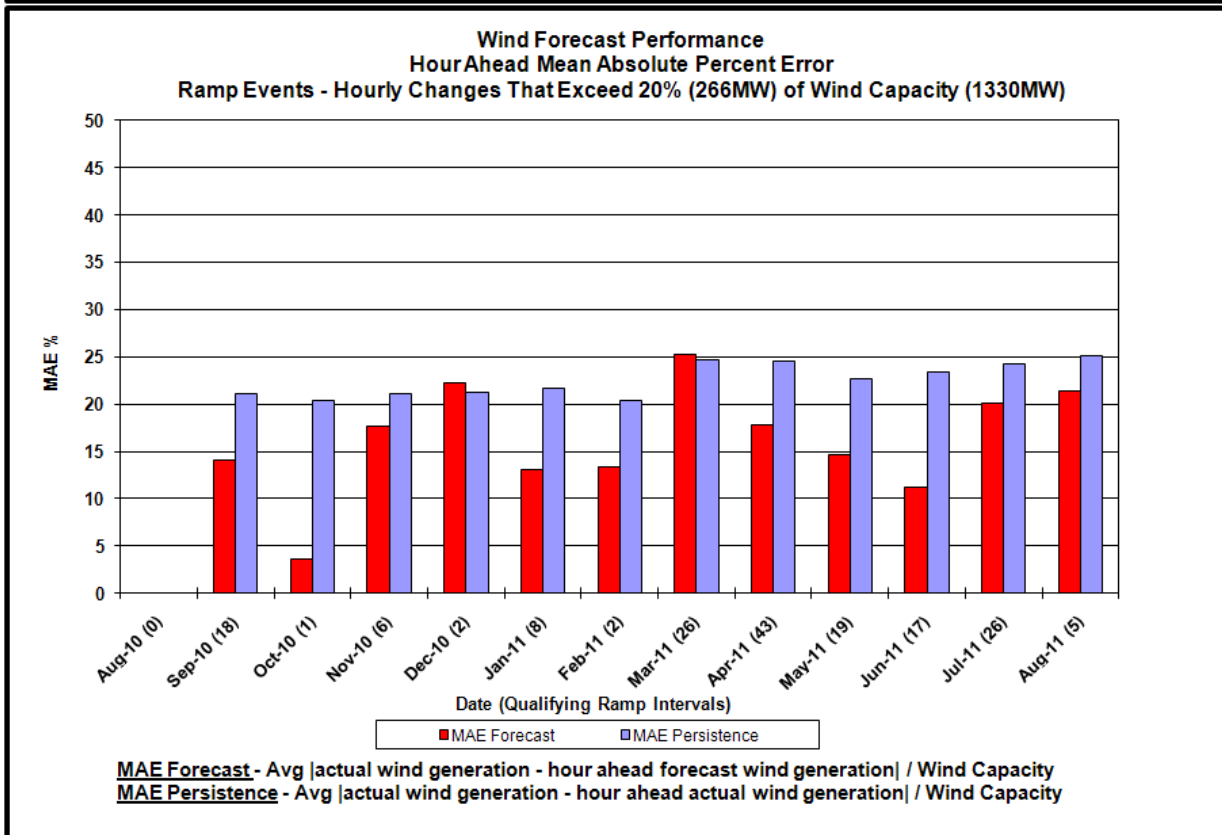
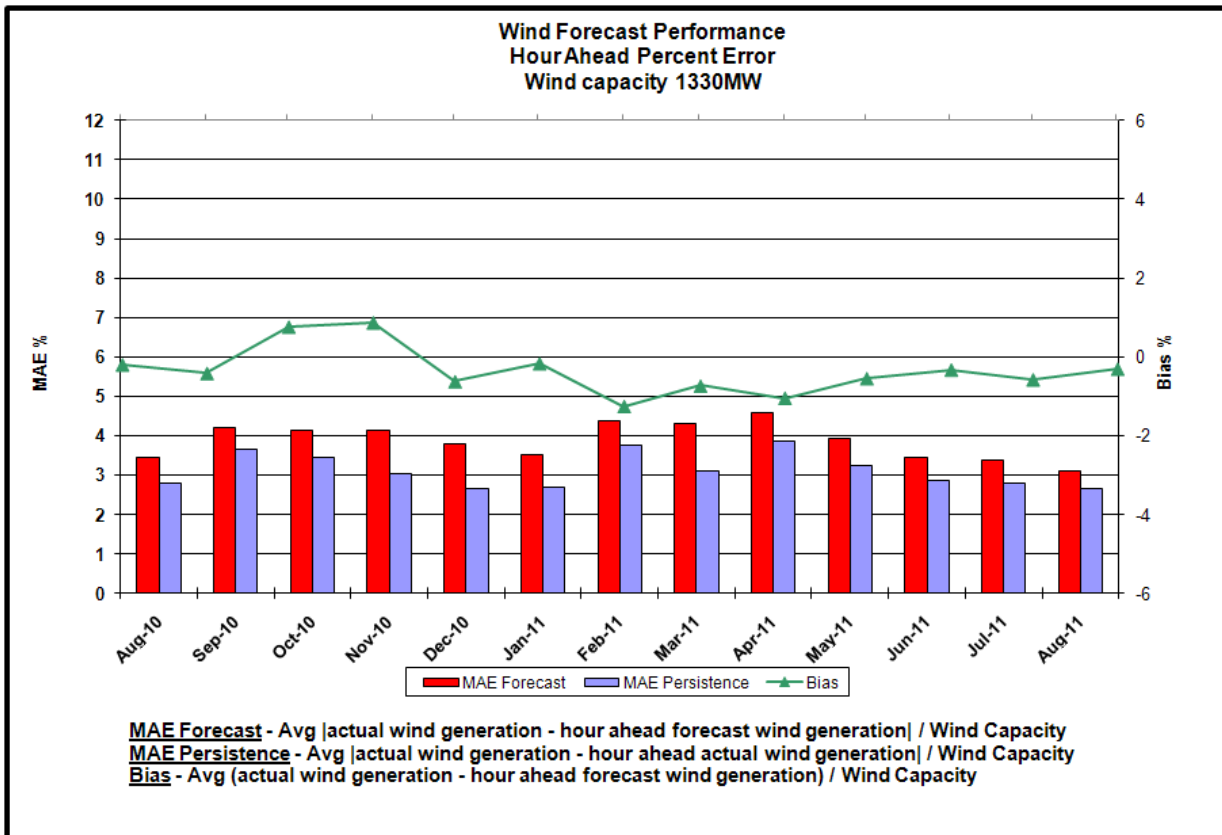
Reliability Performance Metrics

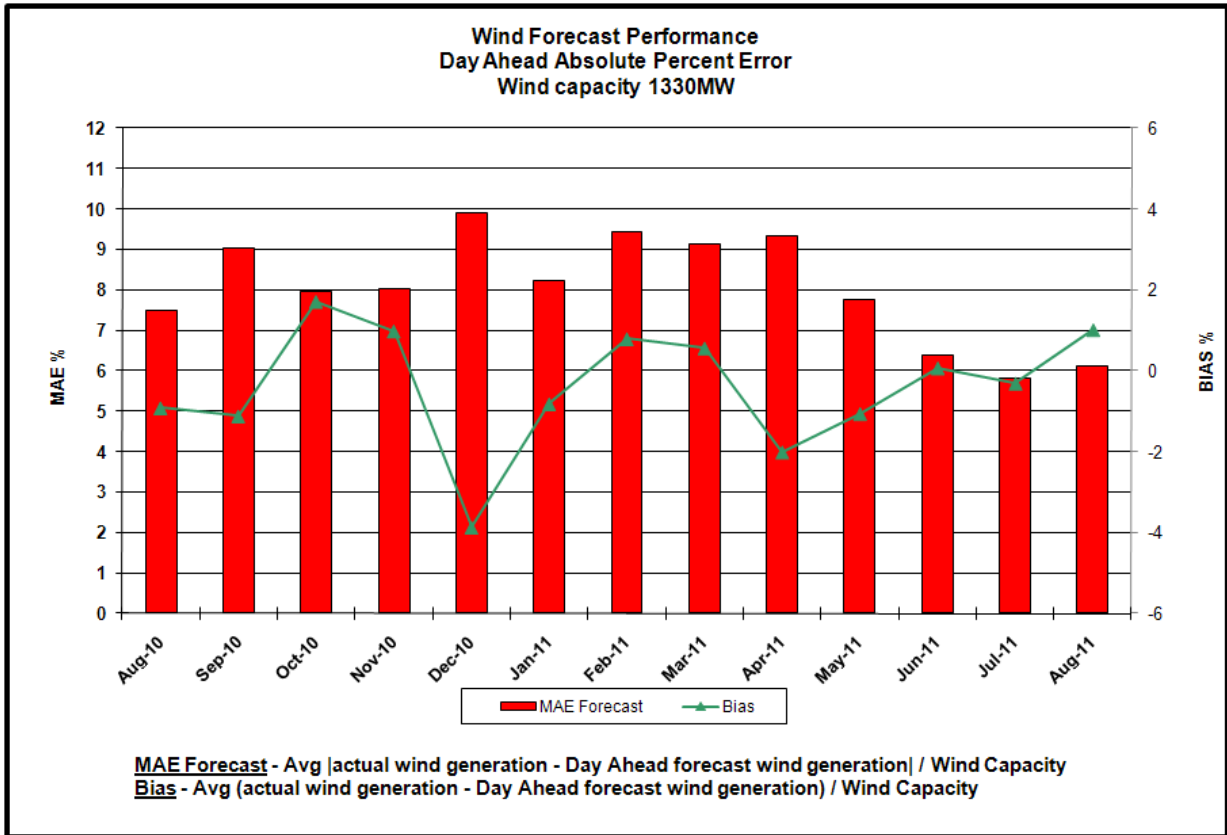


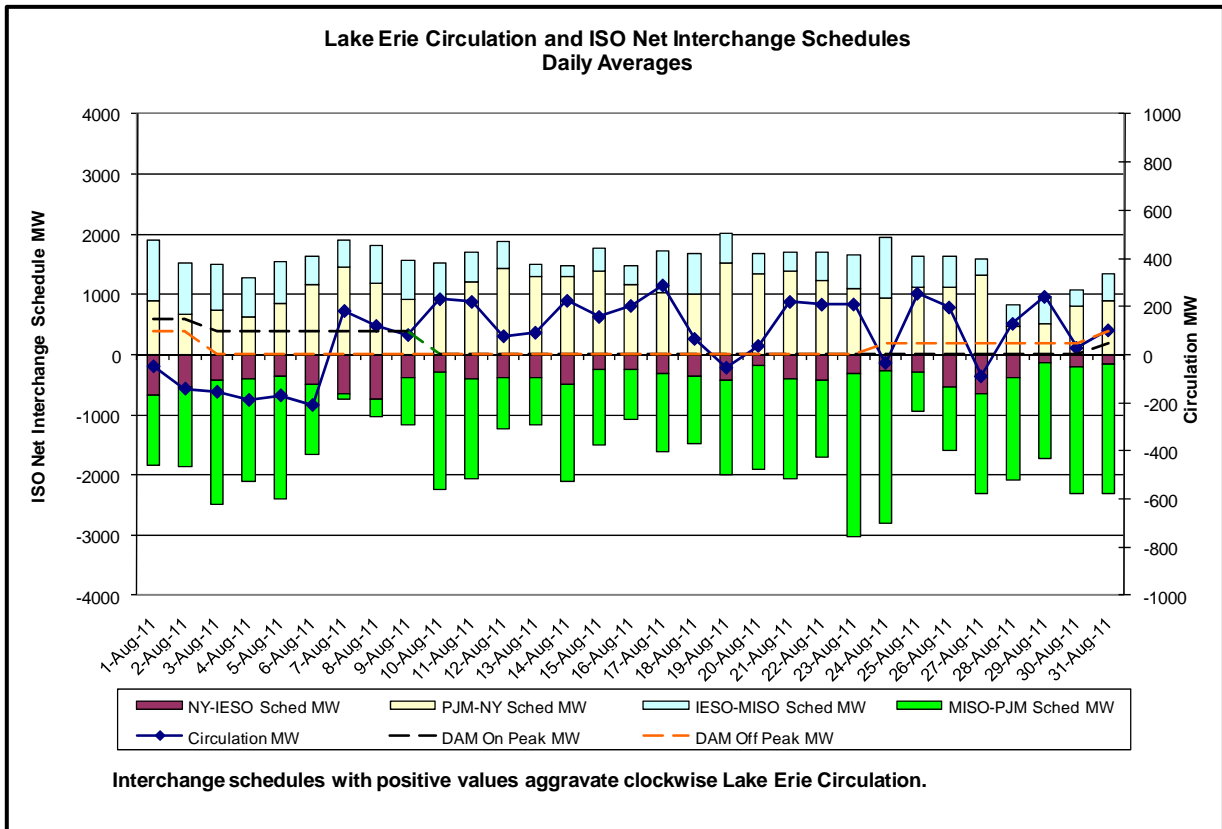
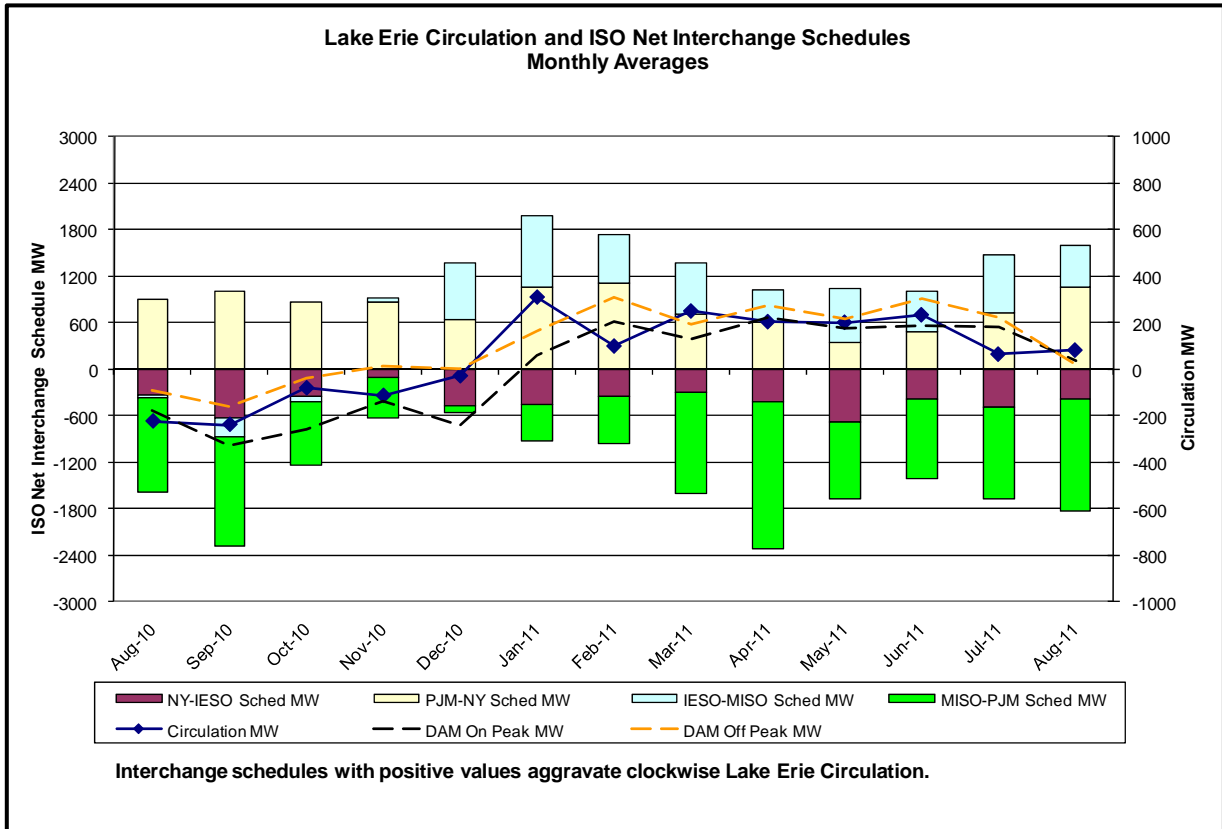




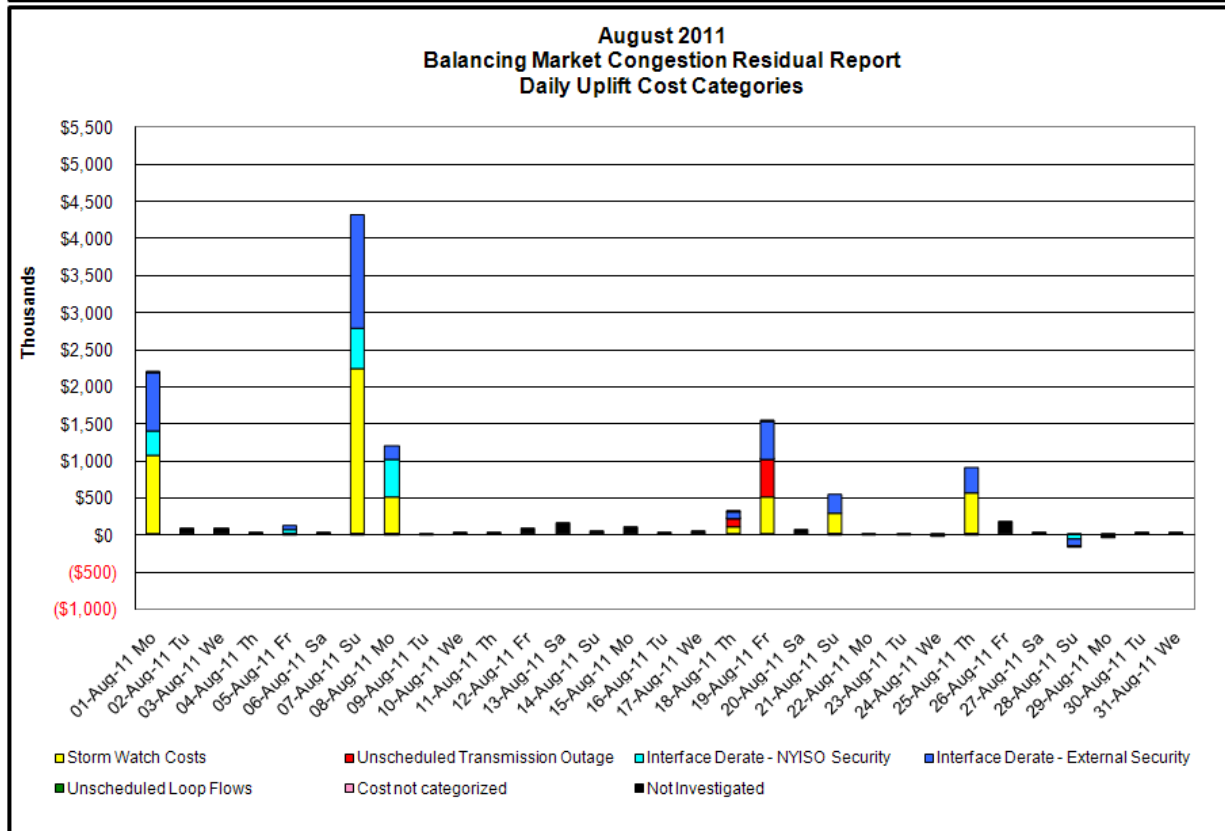
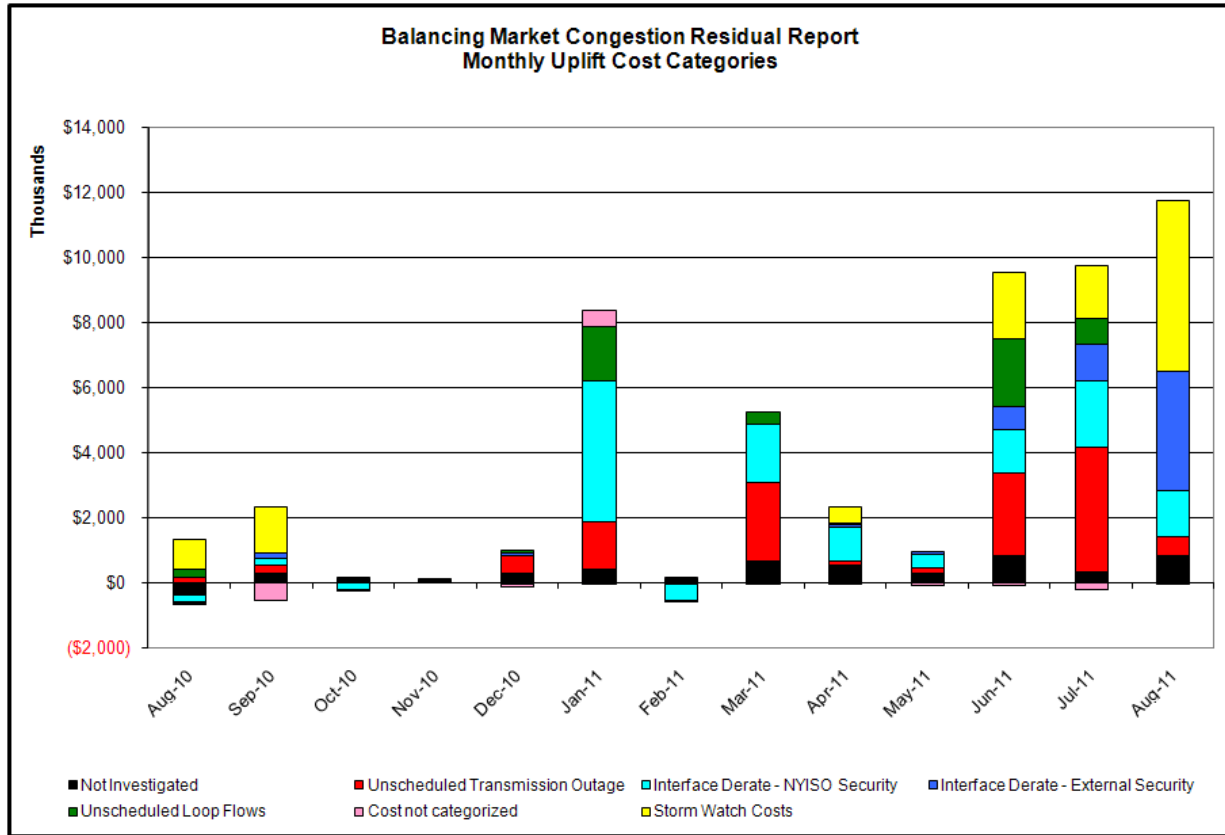








Market Performance Metrics



Day/s investigated in August: 1,5,7,8,18,19,21,25,28

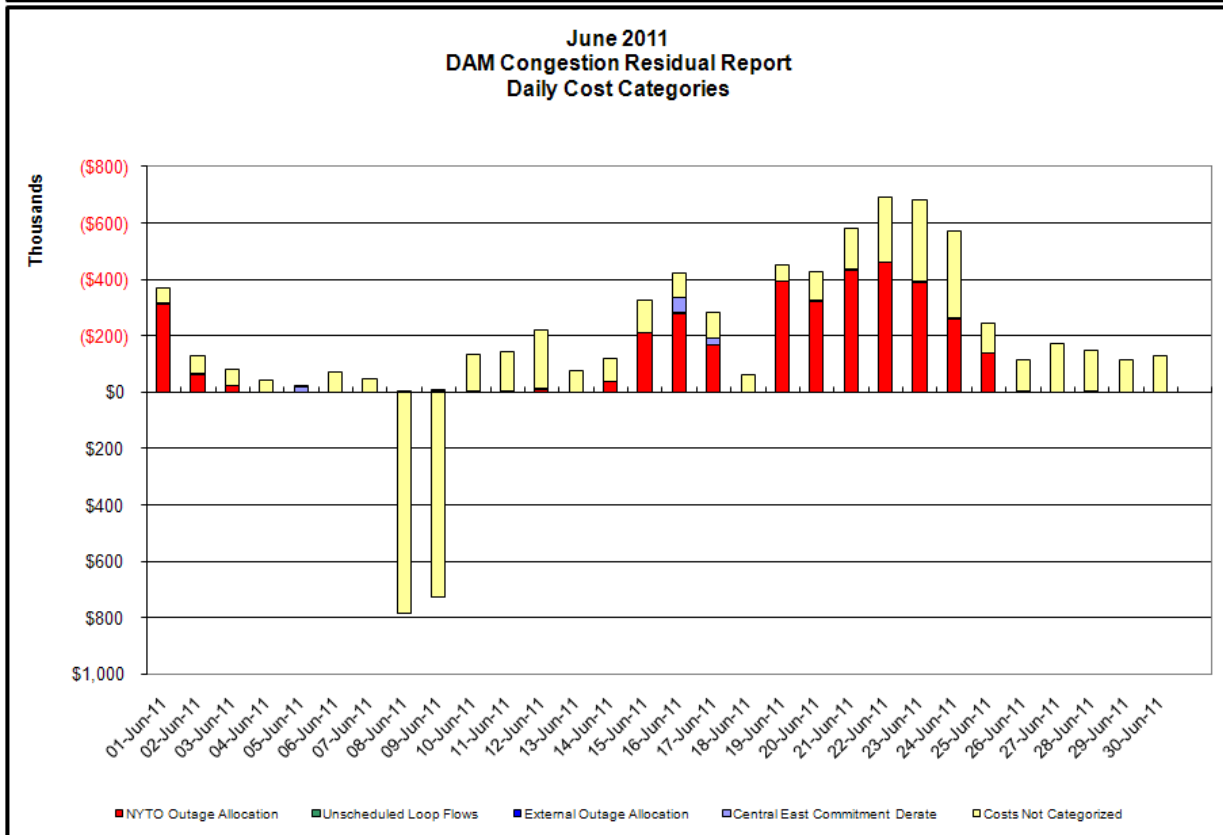
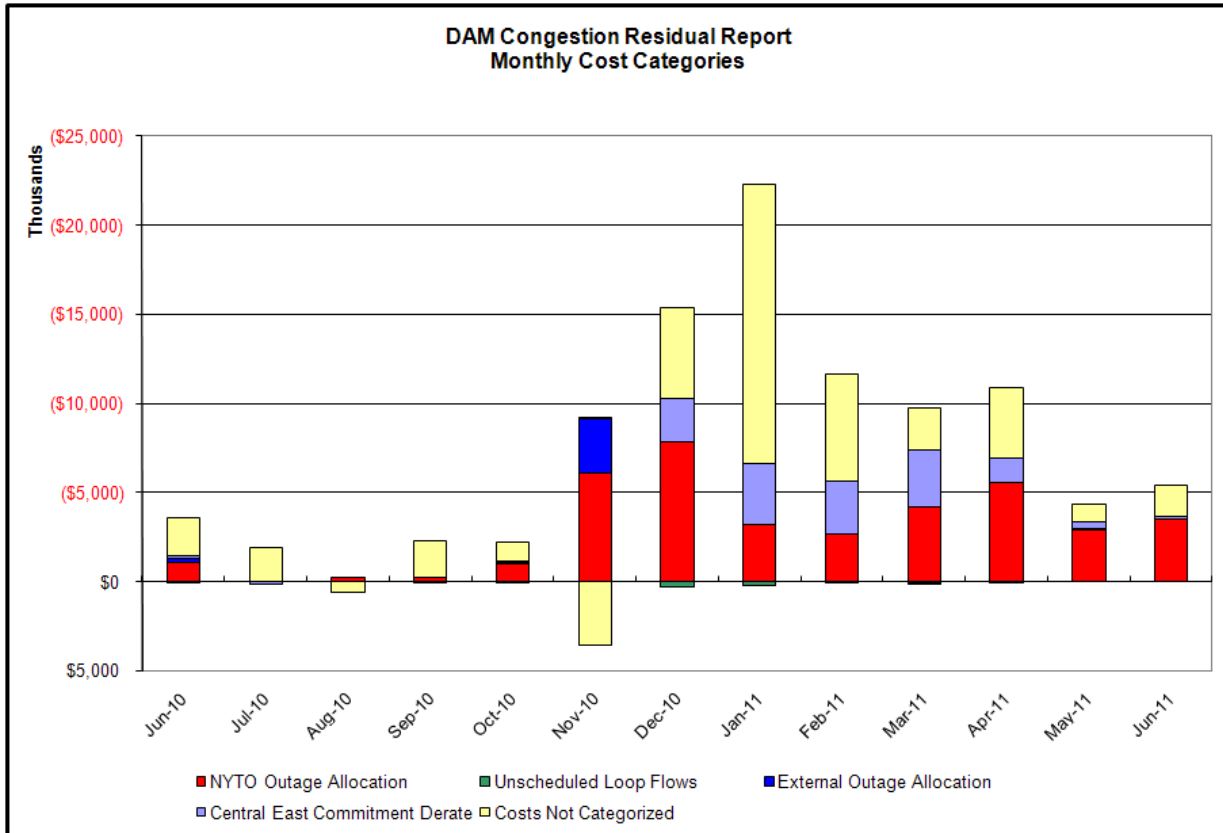
Event	Date (yyyy)	Hours	Description
	8/1/2011	10,11,15-19,22,23	Thunder Storm Alert
	8/1/2011	10-13,19,20	Derate Dunwoodie-Shore Road 345kV (#Y50) for I/o Neptune HVDC
	8/1/2011	19-23	Derate GowanusN-Greenwood 138kV (#42231)
	8/1/2011	19,21-23	Derate GowanusS-Greenwood 138kV (#42232)
	8/1/2011	21	Derate Greenwood-Kent Avenue 138kV (#31232-2) for SCB:Goethals 1N
	8/1/2011	20	Derate Greenwood-Kent Avenue 138kV (#31232-2) for I/o TWR:Goethals
	8/1/2011	13,18,22	NYCA DNI Ramp Limit
	8/1/2011	21	Derate Greenwood/Staten Island
	8/1/2011	17	IESO_AC DNI Ramp Limit
	8/1/2011	11,12,16-21,23	HQ_CHAT-NY Scheduling Limit
	8/5/2011	23	NYCA DNI Ramp Limit
	8/5/2011	23	Derate GowanusN-Greenwood 138kV (#42231)
	8/5/2011	23	Derate GowanusS-Greenwood 138kV (#42232)
	8/5/2011	23	HQ_CHAT DNI Ramp Limit
	8/7/2011	16-22	Thunder Storm Alert
	8/7/2011	19	Derate Dunwoodie-Shore Road 345kV (#Y50)
	8/7/2011	14,15,21,22	Derate Dunwoodie-Shore Road 345kV (#Y50) for I/o Neptune HVDC
	8/7/2011	14	Derate Leeds-New Scotland 345kV (#93) for I/o Leeds-New Scotland 345kV (#94)
	8/7/2011	15,16	HQ_CHAT-NY Scheduling Limit
	8/7/2011	16,17,19,20,21	HQ_CHAT DNI Ramp Limit
	8/8/2011	15-18	Thunder Storm Alert
	8/8/2011	17	NYCA DNI Ramp Limit
	8/8/2011	11,15-20	Derate Dunwoodie-Shore Road 345kV (#Y50) for I/o Neptune HVDC
	8/8/2011	15,18	Derate GowanusN-Greenwood 138kV (#42231)
	8/8/2011	15,18	Derate GowanusS-Greenwood 138kV (#42232)
	8/8/2011	16-20	HQ_CHAT-NY Scheduling Limit
	8/8/2011	16	HQ_CHAT DNI Ramp Limit
	8/18/2011	18-22	Thunder Storm Alert
	8/18/2011	15,18-22	Forced outage Hudson-Farragutt 345kV (#C3403)
	8/18/2011	15	Derate Leeds-New Scotland 345kV (#93) for I/o Leeds-New Scotland 345kV (#94)
	8/18/2011	19-21	HQ_CHAT-NY Scheduling Limit
	8/19/2011	13-21	Thunder Storm Alert
	8/19/2011	13-21	Forced outage Hudson-Farragutt 345kV (#C3403)
	8/19/2011	0	NYCA DNI Ramp Limit
	8/19/2011	0	NE_AC DNI Ramp Limit
	8/19/2011	14-20	HQ_CHAT-NY Scheduling Limit
	8/19/2011	13	HQ_CHAT DNI Ramp Limit
	8/21/2011	13-21	Thunder Storm Alert
	8/21/2011	14-20	HQ_CHAT-NY Scheduling Limit
	8/25/2011	10-17,19-22	Thunder Storm Alert
	8/25/2011	10-13,15-17,20-21	HQ_CHAT-NY Scheduling Limit
	8/28/2011	10,14,16,18,19,23	NYCA DNI Ramp Limit
	8/28/2011	19	PJM_AC DNI Ramp Limit
	8/28/2011	18,20,21	NE_AC-NY Scheduling Limit
	8/28/2011	10,14,16,18,21	HQ_CHAT DNI Ramp Limit

Real-Time Balancing Market Congestion Residual (Uplift Cost) Categories

<u>Category</u>	<u>Cost Assignment</u>	<u>Events Types</u>	<u>Event Examples</u>
Storm Watch	Zone J	Thunderstorm Alert (TSA)	TSA Activations
Unscheduled Transmission Outage	Market-wide	Reduction in DAM to RTM transfers related to unscheduled transmission outage	Forced Line Outage, Unit AVR Outages
Interface Derate - NYISO Security	Market-wide	Reduction in DAM to RTM transfers not related to transmission outage	Interface Derates due to RTM voltages
Interface Derate - External Security	Market-wide	Reduction in DAM to RTM transfers related to External Control Area Security Events	TLR Events, External Transaction Curtailments
Unscheduled Loop Flows	Market-wide	Changes in DAM to RTM unscheduled loop flows impacting NYISO Interface transmission constraints	DAM to RTM Clockwise Lake Erie Loop Flows greater than 125 MW

Monthly Balancing Market Congestion Report Assumptions/Notes

- 1) Storm Watch Costs are identified as daily total uplift costs
- 2) At a minimum those days with \$ 100 K/HR, shortfall of \$200 K/Day or more, or surplus of \$ 100 K/Day or more are investigated
- 3) Uplift costs associated with multiple event types are apportioned equally by hour
- 4) Investigations began with Dec 2008. Prior months are reported as Not Investigated.



Day-Ahead Market Congestion Residual Categories

<u>Category</u>	<u>Cost Assignment</u>	<u>Events Types</u>	<u>Event Examples</u>
NYTO Outage Allocation	Responsible TO	Direct allocation to NYTO's responsible for transmission equipment status change.	DAM scheduled outage for equipment modeled in-service for the TCC Auction.
Unscheduled Loop Flows	All TO by Monthly Allocation Factor	Residual impact of Lake Erie circulation, MW difference between the DAM and TCC Auction.	Lake Erie Loop Flow Assumptions
External Outage Allocation	All TO by Monthly Allocation Factor	Direct allocation to transmission equipment status change caused by change in status of external equipment.	Tie line required out-of-service by TO of neighboring control area.
Central East Commitment Derate	All TO by Monthly Allocation Factor	Reductions in the DAM Central East_VC limit as compared to the TCC Auction limit, which are not associated with transmission line outages.	

