
NYISO President's Report

*Management Committee Meeting
May 21, 2007*

Agenda #3

Report Items

- Joint Board/MC Meeting
- Save the Date - June 27th Energy Efficiency, Demand Response, and Advanced Metering
- Price Correction Status Update
- Market Performance Highlights – For Information Only

Joint Board/MC Meeting

- **June 11, 2007 – Sagamore Resort, Bolton Landing, NY**
- **Town-Hall Discussion Format Focused on:**
 - ✓ *Economic Planning*
 - ✓ *Market Evolution*
 - ✓ *Metering Initiatives*
- **The NYISO has received a number of written comments from MC members**
 - NYISO staff is compiling MC member comments and will provide them to the NYISO Board for review.
 - A list of questions and responses will be developed based upon the submitted material, and will be distributed to Market Participants.

Joint Board/MC Meeting

- **Town-hall Discussion:**
 - Individual MC members will be asked to speak on the agenda topics and exchange of questions and comments.
 - To facilitate discussions, the NYISO will work with MC members prior to the meeting to develop a queue of MC members who would like to speak at the meeting in response to member comments and the Board's responses.
 - MC members wishing to be in the initial queue should notify Leigh Bullock at lbullock@nyiso.com by May 31, 2007.

Please Save the Date

For a summit hosted by the NYISO:

The Future is Now:

*Energy Efficiency, Demand Response, and
Advanced Metering*

June 27, 2007

10a.m – 4 p.m.

The Desmond Hotel

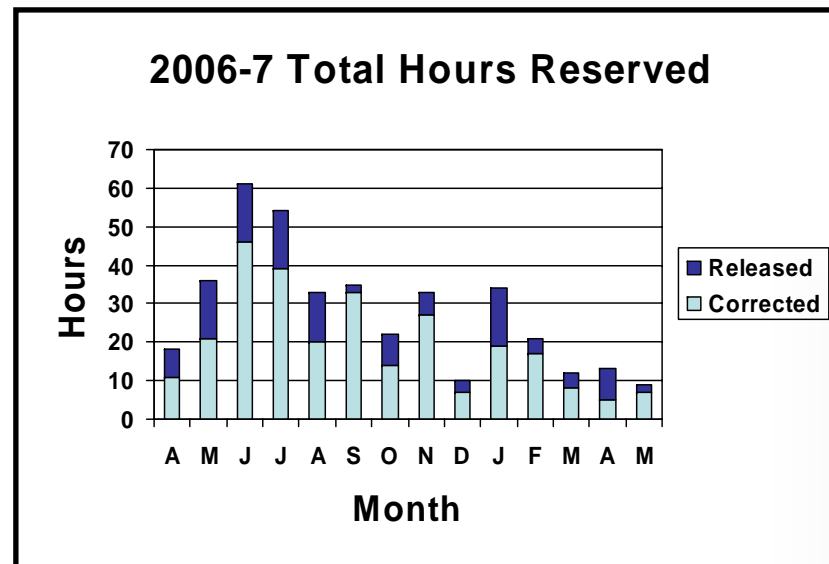
660 Albany-Shaker Road

Albany, NY

A brochure with additional information listing the discussion panels and outstanding speakers will follow shortly

Price Correction Statistics

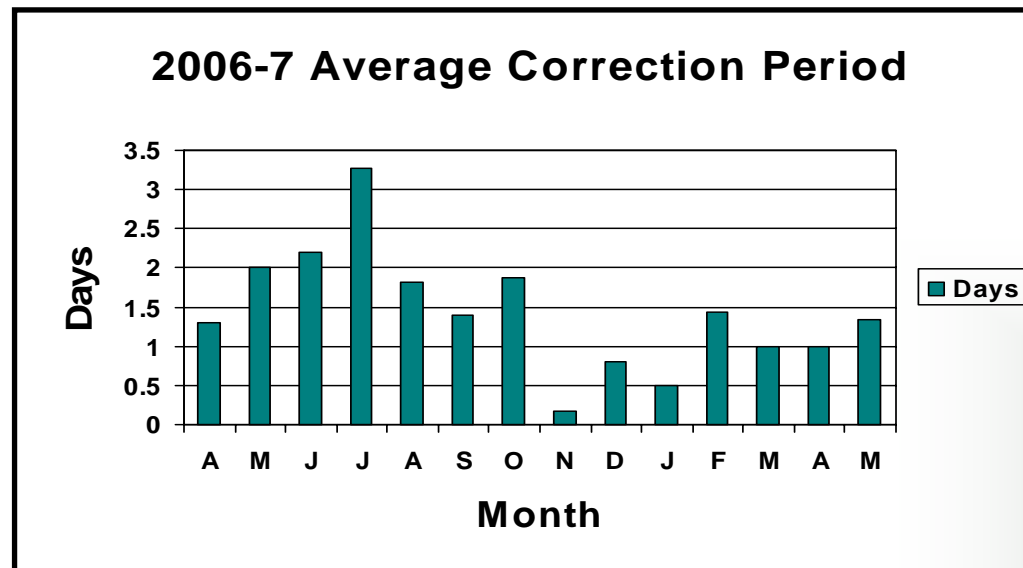
Recent Results	Reservations	Corrections	Released	Tot. Hours
January	34	19	15	744
February	21	17	4	672
March	12	8	4	744
April	13	5	8	720
May*	9	7	2	312



* - Data through 13 May 2007

Price Correction Statistics (Cont.)

Recent Results	Days Corrected	Avg	Max	Min
January	12	0.83	2	0
February	7	1.43	3	0
March	4	1.00	2	0
April	3	1.00	2	0
May*	3	1.33	2	1

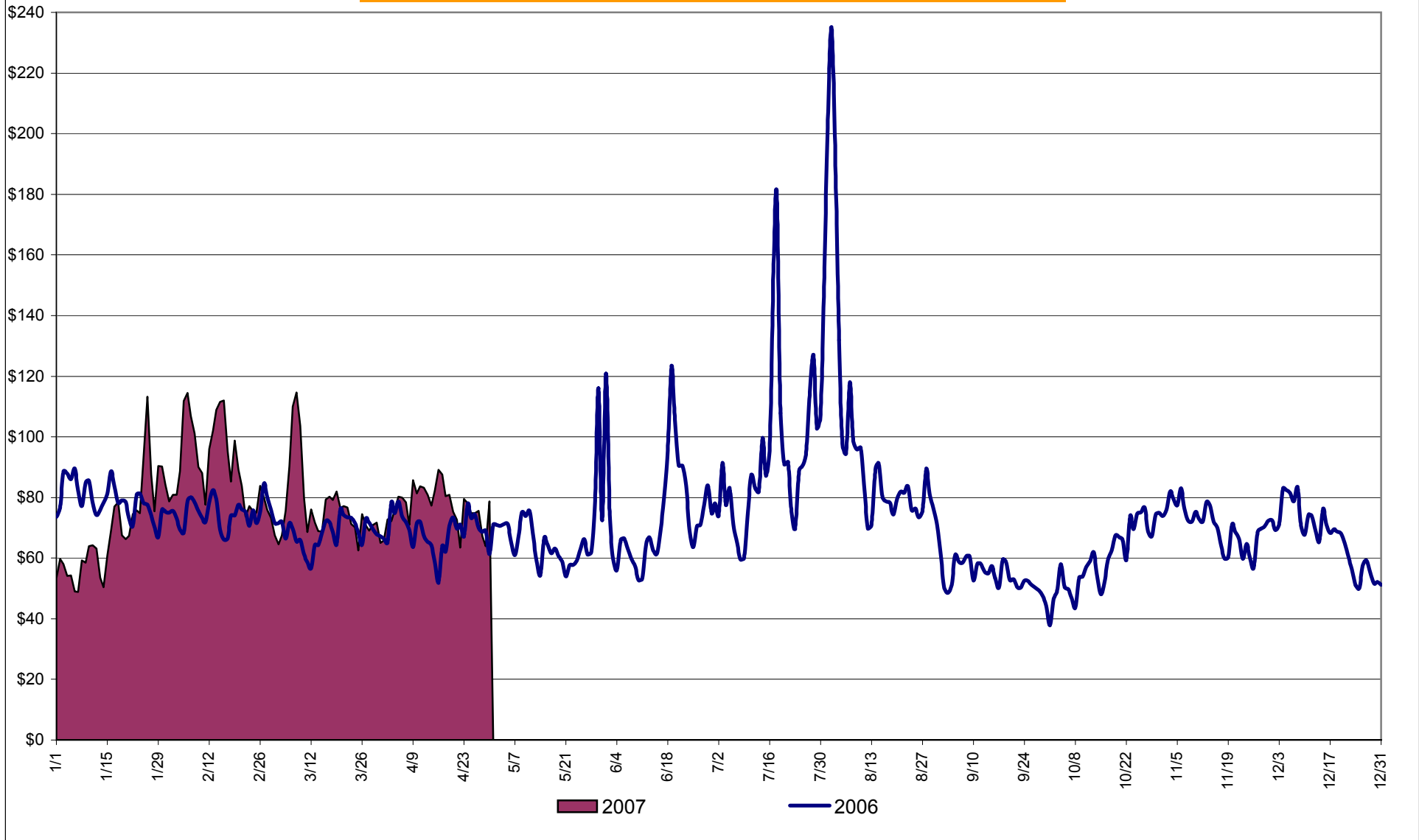


* - Data through 13 May 2007

Market Performance Highlights for April 2007

- LBMP for April is \$73.14/MWh, down from \$75.09/MWh in March 2007.
 - Average monthly cost is \$77.52/MWh, slightly down from \$77.85/MWh in March 2007.
 - Day Ahead and Real Time LBMPs have decreased slightly from March 2007.
- Average daily sendout is 414GWh/day in April, down from 438GWh/day in March 2007 and up from 395GWh/day in April 2006.
- Fuel prices are up this month. Natural gas and No. 6 oil are up slightly.
 - Kerosene is \$15.18/mmBTU, up from \$13.90/mmBTU in March.
 - No. 2 Fuel Oil is \$13.29/mmBTU, up from \$12.39/mmBTU in March.
 - No. 6 Fuel Oil is \$8.55/mmBTU, up from \$8.28/mmBTU in March.
 - Natural Gas is \$8.52/mmBTU, up from \$8.44/mmBTU in March.
- Uplift is higher this month relative to March 2007.
 - Uplift (not including NYISO cost of operations) is \$2.14/MWh, up from \$0.29/MWh in March 2007.
 - Total uplift (Schedule 1 components including NYISO Cost of Operations) increased from \$13.5 million in March 2007 to \$37.1 million in April 2007.

Daily NYISO Average Cost/MWh (Energy & Ancillary Services)*
2006 Annual Average \$76.45/MWh
April 2006 YTD Average \$73.24/MWh
April 2007 YTD Average \$79.68/MWh



* Excludes ICAP payments.

NYISO Average Cost/MWh (Energy and Ancillary Services) *
from the LBMP Customer point of view

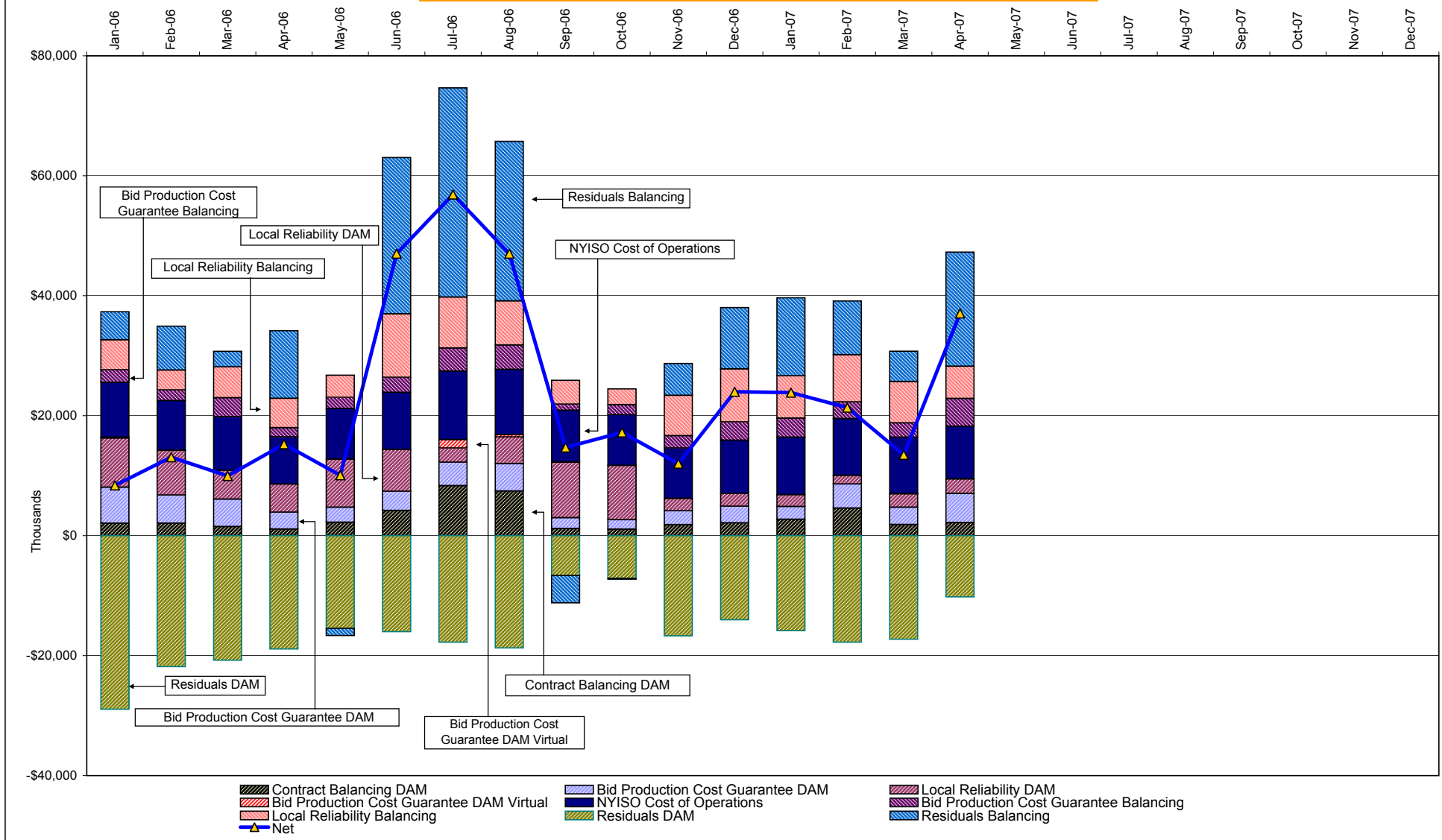
2007	<u>January</u>	<u>February</u>	<u>March</u>	<u>April</u>	<u>May</u>	<u>June</u>	<u>July</u>	<u>August</u>	<u>September</u>	<u>October</u>	<u>November</u>	<u>December</u>
LBMP	67.23	89.14	75.09	73.14								
NTAC	0.46	0.56	0.57	0.53								
Reserve	0.43	0.23	0.34	0.36								
Regulation	0.46	0.47	0.55	0.35								
NYISO Cost of Operations	0.66	0.66	0.66	0.66								
Uplift	1.00	0.88	0.29	2.14								
Voltage Support and Black Start	<u>0.34</u>	<u>0.34</u>	<u>0.34</u>	<u>0.34</u>								
Avg Monthly Cost	70.57	92.29	77.85	77.52								
Avg YTD Cost	70.57	81.65	80.36	79.68								

2006	<u>January</u>	<u>February</u>	<u>March</u>	<u>April</u>	<u>May</u>	<u>June</u>	<u>July</u>	<u>August</u>	<u>September</u>	<u>October</u>	<u>November</u>	<u>December</u>
LBMP	77.13	71.86	66.52	66.24	65.54	71.94	93.41	101.33	51.89	57.60	68.44	63.97
NTAC	0.46	0.90	0.43	0.54	0.64	0.69	0.47	0.39	0.33	0.38	0.42	0.48
Reserve	0.35	0.30	0.29	0.35	0.16	0.22	0.30	0.13	0.29	0.29	0.46	0.43
Regulation	0.56	0.68	0.69	0.47	0.42	0.39	0.30	0.28	0.41	0.43	0.49	0.52
NYISO Cost of Operations	0.64	0.64	0.64	0.64	0.64	0.64	0.64	0.64	0.64	0.64	0.64	0.64
Uplift	(0.06)	0.37	0.09	0.63	0.12	2.63	2.42	2.28	0.46	0.68	0.29	1.12
Voltage Support and Black Start	<u>0.36</u>	<u>0.36</u>	<u>0.36</u>	<u>0.36</u>	<u>0.36</u>	<u>0.36</u>	<u>0.36</u>	<u>0.36</u>	<u>0.36</u>	<u>0.36</u>	<u>0.36</u>	<u>0.36</u>
Avg Monthly Cost	79.46	75.11	69.03	69.24	67.88	76.87	97.90	105.42	54.38	60.38	71.11	67.52
Avg YTD Cost	79.46	77.40	74.49	73.24	72.19	73.07	77.90	82.11	79.45	77.72	77.21	76.45

* Excludes ICAP payments.

These numbers reflect the rebilling of prior periods.

NYISO Dollar Flows - Uplift - OATT Schedule 1 components



DAM Contract Balancing amounts are for payments made to generating units to make them whole for being dispatched below their Day-Ahead schedule, as a result of out-of-merit dispatches.
 DAM Bid Production Cost Guarantees for Virtual Transactions are included in the chart and are shown from the inception of Virtual Transactions. These values are small and cannot be identified on the chart.
 DAM residuals are revenue charged or returned to customers due to the under or over collection of funds.

NYISO Markets Transactions

2007	January	February	March	April	May	June	July	August	September	October	November	December
Day Ahead Market MWh	14,164,585	13,771,553	13,677,039	12,880,994								
DAM LSE Internal LBMP Energy Sales	45%	44%	48%	46%								
DAM External TC LBMP Energy Sales	4%	7%	4%	6%								
DAM Bilateral - Internal Bilaterals	47%	45%	44%	44%								
DAM Bilateral - Import/Non-LBMP Market Bilaterals	2%	2%	2%	2%								
DAM Bilateral - Export/Non-LBMP Market Bilaterals	1%	1%	1%	1%								
DAM Bilateral - Wheel Through Bilaterals	1%	1%	1%	1%								
Balancing Energy Market MWh	436,345	630,212	626,488	471,340								
Balancing Energy LSE Internal LBMP Energy Sales	51%	49%	43%	33%								
Balancing Energy External TC LBMP Energy Sales	56%	59%	58%	68%								
Balancing Energy Bilateral - Internal Bilaterals	-1%	-4%	1%	0%								
Balancing Energy Bilateral - Import/Non-LBMP Market Bilaterals	0%	0%	0%	0%								
Balancing Energy Bilateral - Export/Non-LBMP Market Bilaterals	0%	0%	0%	0%								
Balancing Energy Bilateral - Wheel Through Bilaterals	-7%	-4%	-2%	-1%								
Transactions Summary												
LBMP	51%	54%	54%	54%								
Internal Bilaterals	45%	42%	42%	42%								
Import Bilaterals	2%	2%	2%	2%								
Export Bilaterals	1%	1%	1%	1%								
Wheels Through	1%	1%	1%	1%								
Market Share of Total Load												
Day Ahead Market	97.0%	95.6%	95.6%	96.5%								
Balancing Energy †	3.0%	4.4%	4.4%	3.5%								
Total MWh	14,600,930	14,401,765	14,303,527	13,352,334								
Average Daily Energy Sendout/Month GWh	449	471	438	414								
2006	January	February	March	April	May	June	July	August	September	October	November	December
Day Ahead Market MWh	13,877,416	12,532,754	13,392,627	11,860,369	12,637,299	14,251,897	17,302,066	16,604,505	13,110,510	12,648,358	12,827,462	13,423,412
DAM LSE Internal LBMP Energy Sales	46%	47%	48%	50%	46%	48%	51%	50%	46%	47%	44%	47%
DAM External TC LBMP Energy Sales	4%	3%	2%	2%	3%	3%	5%	5%	3%	3%	4%	2%
DAM Bilateral - Internal Bilaterals	47%	47%	45%	45%	47%	45%	41%	42%	48%	47%	49%	47%
DAM Bilateral - Import/Non-LBMP Market Bilaterals	2%	2%	2%	2%	2%	2%	1%	2%	2%	2%	2%	2%
DAM Bilateral - Export/Non-LBMP Market Bilaterals	1%	1%	2%	1%	1%	1%	2%	1%	1%	1%	1%	1%
DAM Bilateral - Wheel Through Bilaterals	0%	0%	0%	0%	0%	0%	0%	0%	0%	0%	0%	0%
Balancing Energy Market MWh	299,347	312,712	555,364	396,752	486,039	559,821	471,866	339,367	233,201	512,098	169,737	374,567
Balancing Energy LSE Internal LBMP Energy Sales	2%	20%	31%	26%	45%	32%	49%	38%	-16%	51%	-45%	35%
Balancing Energy External TC LBMP Energy Sales	87%	76%	66%	68%	48%	60%	62%	63%	89%	45%	132%	61%
Balancing Energy Bilateral - Internal Bilaterals	5%	2%	2%	2%	2%	5%	1%	2%	-1%	1%	13%	4%
Balancing Energy Bilateral - Import/Non-LBMP Market Bilaterals	2%	1%	0%	0%	3%	0%	0%	0%	3%	0%	0%	0%
Balancing Energy Bilateral - Export/Non-LBMP Market Bilaterals	1%	1%	1%	1%	0%	0%	-12%	1%	1%	1%	1%	1%
Balancing Energy Bilateral - Wheel Through Bilaterals	4%	1%	0%	3%	2%	3%	0%	-3%	24%	2%	-1%	-1%
Transactions Summary												
LBMP	51%	50%	52%	53%	51%	53%	57%	56%	49%	52%	48%	50%
Internal Bilaterals	46%	46%	43%	43%	45%	44%	40%	42%	47%	45%	48%	46%
Import Bilaterals	2%	2%	2%	2%	2%	2%	1%	1%	2%	2%	2%	2%
Export Bilaterals	1%	1%	2%	1%	1%	1%	1%	1%	1%	1%	1%	1%
Wheels Through	0%	0%	0%	0%	0%	0%	0%	0%	0%	0%	0%	0%
Market Share of Total Load												
Day Ahead Market	97.9%	97.6%	96.0%	96.8%	96.3%	96.2%	97.3%	98.0%	98.3%	96.1%	98.7%	97.3%
Balancing Energy †	2.1%	2.4%	4.0%	3.2%	3.7% *	3.8%	2.7%	2.0%	1.7%	3.9%	1.3%	2.7%
Total MWh	14,176,763	12,845,466	13,947,991	12,257,122	13,123,339	14,811,719	17,773,932	16,943,872	13,343,711	13,160,456	12,997,199	13,797,979
Average Daily Energy Sendout/Month GWh	439	444	428	395	407	471	528	518	430	409	416	435

† Balancing Energy: Load(MW) purchased at Real Time LBMP.

* The signs for the detail section intuitively reflect the direction of power flow eliminating the use of double negatives when Balancing Energy is negative.

Notes: Percent totals may not equal 100% due to rounding.
Virtual Transactions are not reflected in this chart.

NYISO Markets 2007 Energy Statistics

	<u>January</u>	<u>February</u>	<u>March</u>	<u>April</u>	<u>May</u>	<u>June</u>	<u>July</u>	<u>August</u>	<u>September</u>	<u>October</u>	<u>November</u>	<u>December</u>
<u>DAY AHEAD LBMP</u>												
Price *	\$62.20	\$84.73	\$71.75	\$70.56								
Standard Deviation	\$21.16	\$21.02	\$19.36	\$18.29								
Load Weighted Price **	\$64.61	\$86.87	\$73.90	\$72.88								
<u>RTC LBMP</u>												
Price *	\$61.44	\$84.30	\$70.97	\$71.30								
Standard Deviation	\$28.08	\$40.04	\$29.30	\$37.47								
Load Weighted Price **	\$63.64	\$86.66	\$73.23	\$74.18								
<u>REAL TIME LBMP</u>												
Price *	\$62.38	\$84.03	\$70.46	\$69.75								
Standard Deviation	\$32.76	\$42.22	\$28.57	\$30.57								
Load Weighted Price **	\$65.19	\$86.80	\$72.85	\$72.35								
Average Daily Energy Sendout/Month GWh	449	471	438	414								

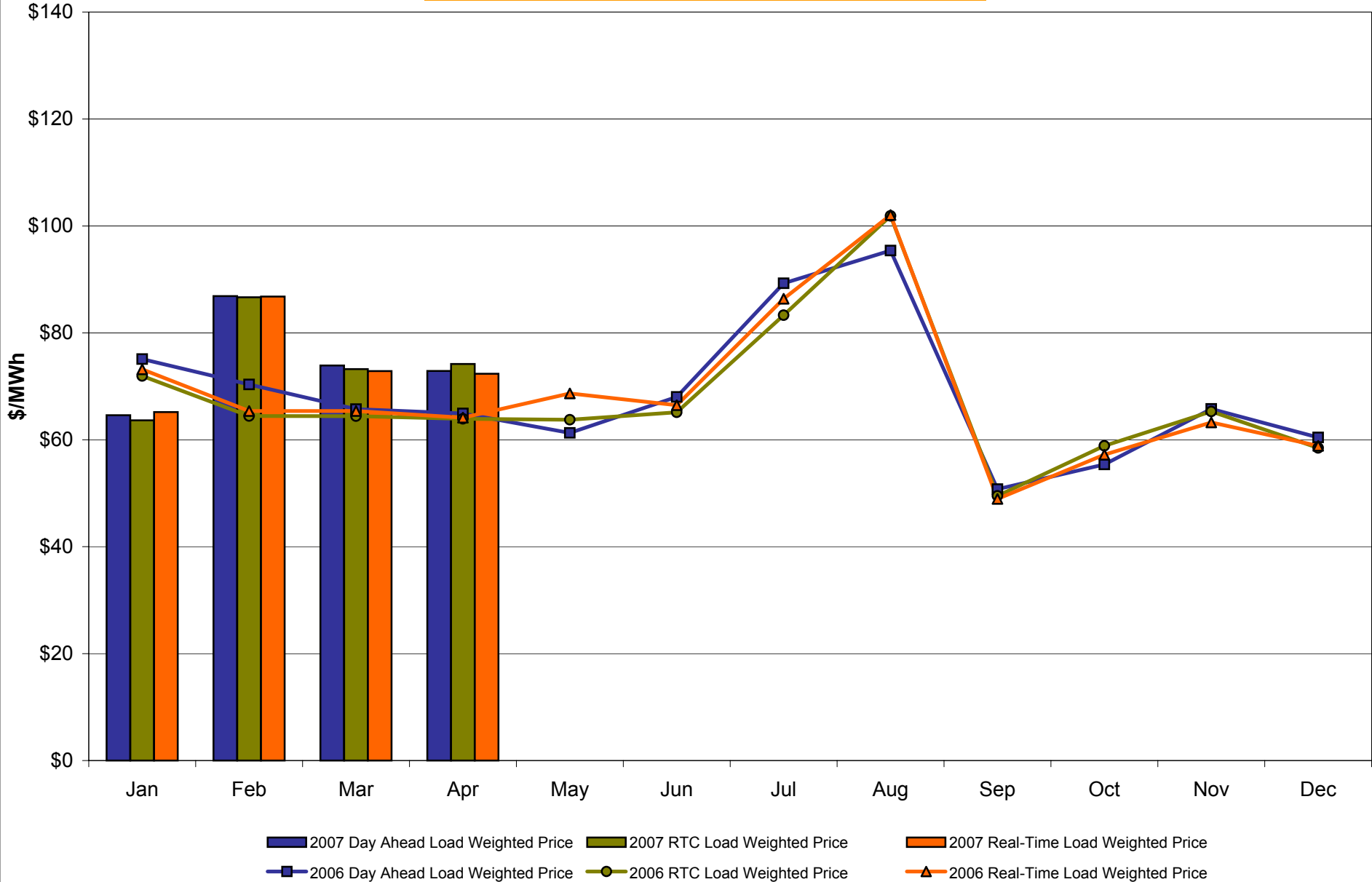
NYISO Markets 2006 Energy Statistics

	<u>January</u>	<u>February</u>	<u>March</u>	<u>April</u>	<u>May</u>	<u>June</u>	<u>July</u>	<u>August</u>	<u>September</u>	<u>October</u>	<u>November</u>	<u>December</u>
<u>DAY AHEAD LBMP</u>												
Price *	\$73.28	\$68.90	\$64.31	\$63.21	\$59.31	\$64.40	\$83.27	\$88.13	\$48.97	\$53.46	\$63.47	\$58.14
Standard Deviation	\$15.03	\$12.95	\$11.95	\$13.28	\$13.70	\$22.66	\$40.24	\$50.58	\$12.19	\$16.54	\$18.80	\$19.65
Load Weighted Price **	\$75.09	\$70.34	\$65.74	\$64.93	\$61.29	\$68.02	\$89.27	\$95.39	\$50.76	\$55.39	\$65.78	\$60.45
<u>RTC LBMP</u>												
Price *	\$70.25	\$63.41	\$63.04	\$62.39	\$60.81	\$61.60	\$77.27	\$91.21	\$47.92	\$56.36	\$62.79	\$56.22
Standard Deviation	\$26.63	\$15.86	\$20.50	\$18.82	\$37.26	\$39.82	\$56.30	\$107.73	\$16.64	\$33.37	\$32.34	\$29.15
Load Weighted Price **	\$71.94	\$64.44	\$64.43	\$63.93	\$63.75	\$65.15	\$83.30	\$101.89	\$49.51	\$58.87	\$65.30	\$58.49
<u>REAL TIME LBMP</u>												
Price *	\$70.91	\$63.96	\$63.66	\$62.35	\$63.29	\$61.23	\$78.58	\$89.95	\$47.09	\$54.66	\$60.65	\$55.94
Standard Deviation	\$31.34	\$20.06	\$23.01	\$20.98	\$62.40	\$52.63	\$66.83	\$97.29	\$17.93	\$27.32	\$28.71	\$29.79
Load Weighted Price **	\$73.18	\$65.38	\$65.38	\$64.13	\$68.66	\$66.47	\$86.37	\$102.03	\$48.95	\$57.21	\$63.26	\$58.87
Average Daily Energy Sendout/Month GWh	439	444	428	395	407	471	528	518	430	409	416	435

* Average zonal load weighted prices.

** Average zonal load weighted prices, load weighted in each hour.

NYISO Monthly Average Internal LBMPs 2006 - 2007

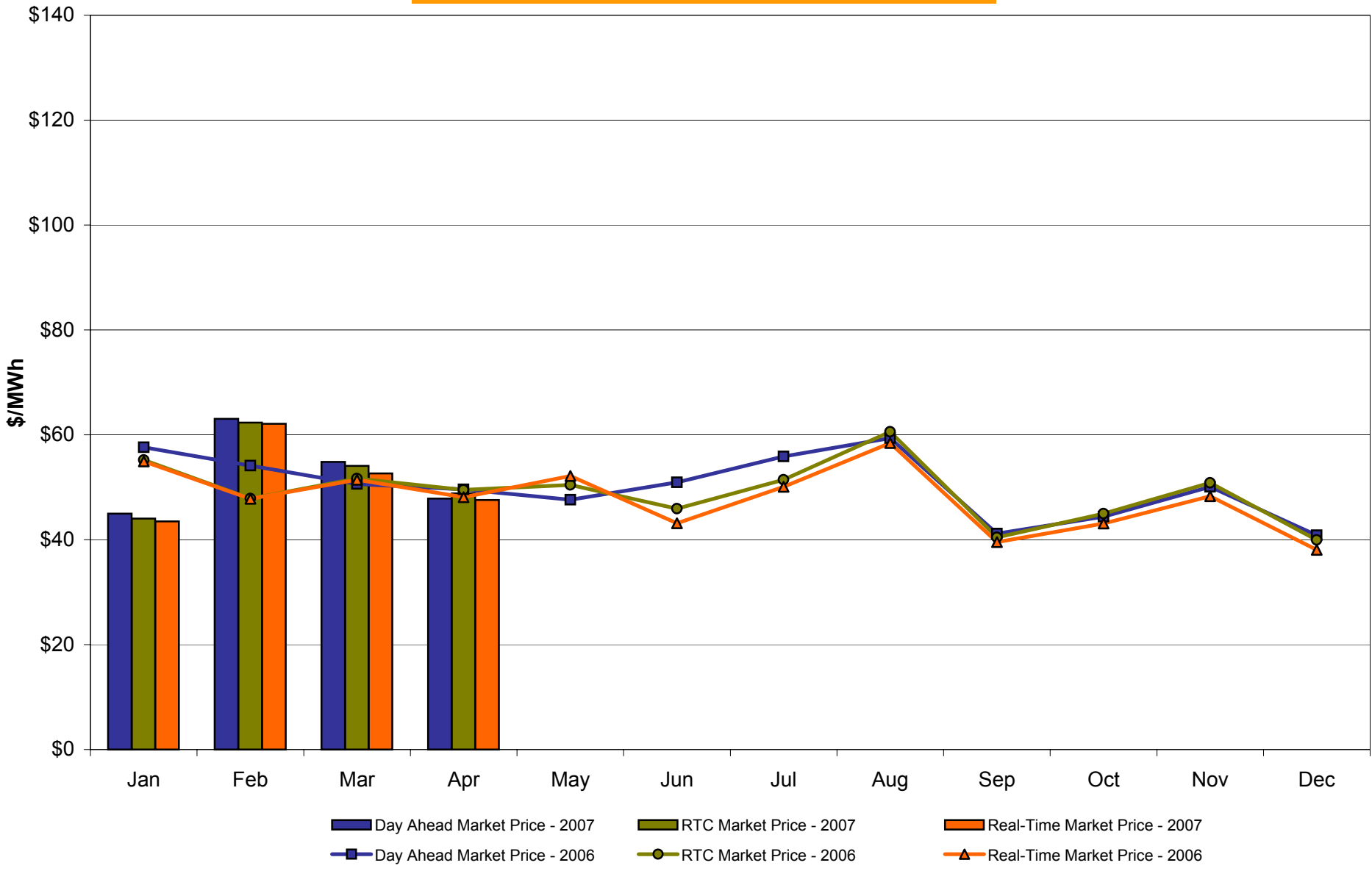


April 2007 Zonal LBMP Statistics for NYISO (\$/MWh)

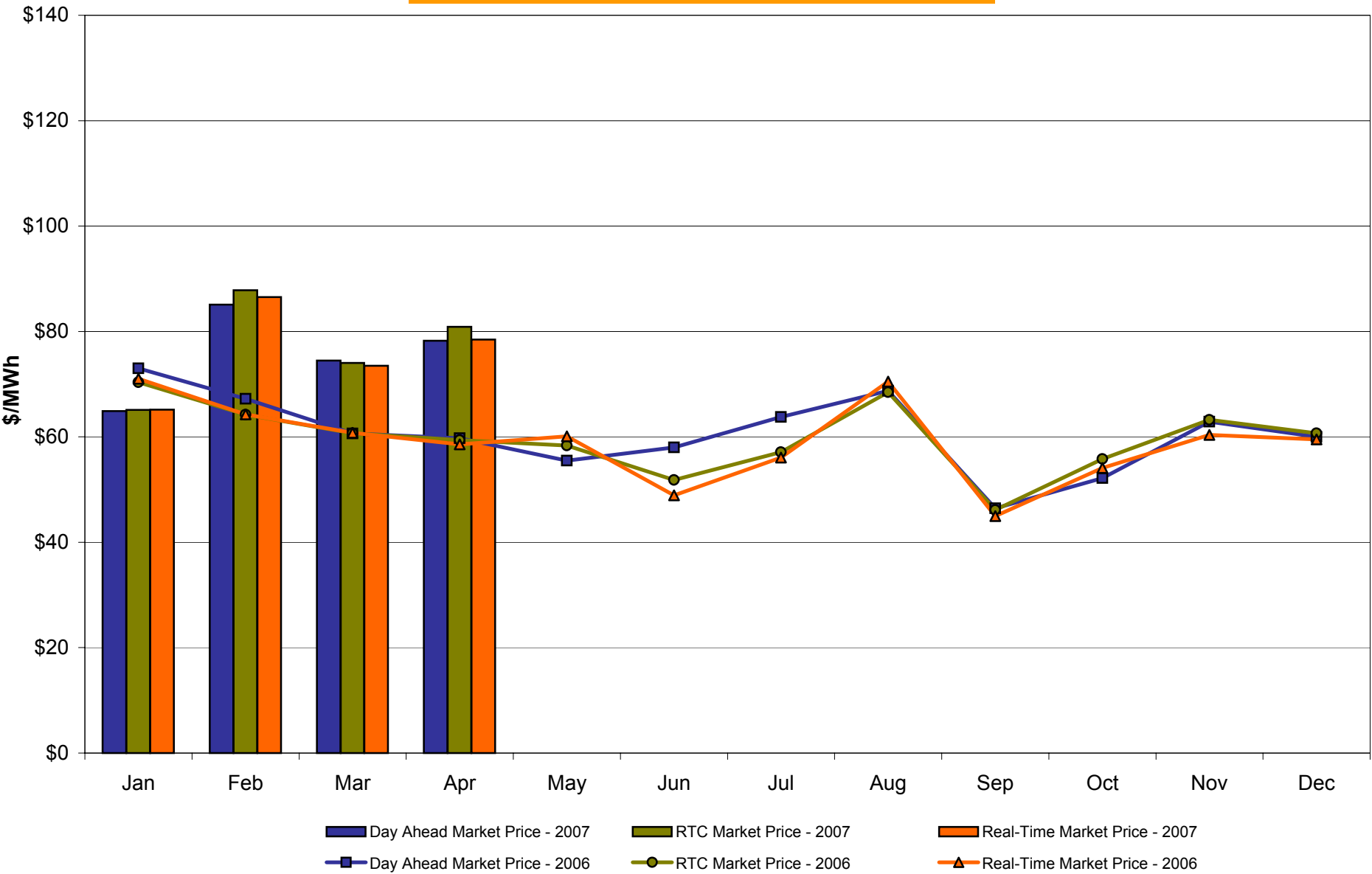
	WEST <u>Zone A</u>	GENESEE <u>Zone B</u>	NORTH <u>Zone D</u>	CENTRAL <u>Zone C</u>	MOHAWK VALLEY <u>Zone E</u>	CAPITAL <u>Zone F</u>	HUDSON VALLEY <u>Zone G</u>	MILLWOOD <u>Zone H</u>	DUNWOODIE <u>Zone I</u>	NEW YORK CITY <u>Zone J</u>	LONG ISLAND <u>Zone K</u>
<u>DAY AHEAD LBMP</u>											
Unweighted Price *	47.86	48.82	48.47	51.85	52.26	78.23	76.88	78.21	78.18	82.43	85.25
Standard Deviation	14.68	15.10	14.74	15.23	15.47	19.63	19.69	20.38	20.48	23.26	19.19
<u>RTC LBMP</u>											
Unweighted Price *	48.83	49.25	46.95	51.61	51.30	80.90	79.09	80.52	80.54	83.72	84.43
Standard Deviation	30.41	31.64	33.37	32.23	33.02	55.98	45.56	46.57	46.44	48.34	45.93
<u>REAL TIME LBMP</u>											
Unweighted Price *	47.57	47.96	45.79	50.22	49.94	78.46	77.72	79.34	79.36	82.79	83.15
Standard Deviation	27.31	28.52	30.57	28.92	29.74	44.76	37.62	39.16	39.15	39.93	38.41
	ONTARIO IESO	HYDRO QUEBEC	PJM	NEW ENGLAND	CROSS SOUND CABLE <u>Controllable Line</u>						
	<u>Zone O</u>	<u>Zone M</u>	<u>Zone P</u>	<u>Zone N</u>							
<u>DAY AHEAD LBMP</u>											
Unweighted Price *	46.70	44.08	51.06	76.45	85.05						
Standard Deviation	14.50	12.65	15.44	18.14	19.08						
<u>RTC LBMP</u>											
Unweighted Price *	41.86	38.13	48.13	71.00	78.02						
Standard Deviation	37.38	101.59	19.80	39.72	37.10						
<u>REAL TIME LBMP</u>											
Unweighted Price *	45.79	44.08	50.70	75.56	83.92						
Standard Deviation	26.24	28.81	26.00	48.96	46.24						

* Straight zonal LBMP averages

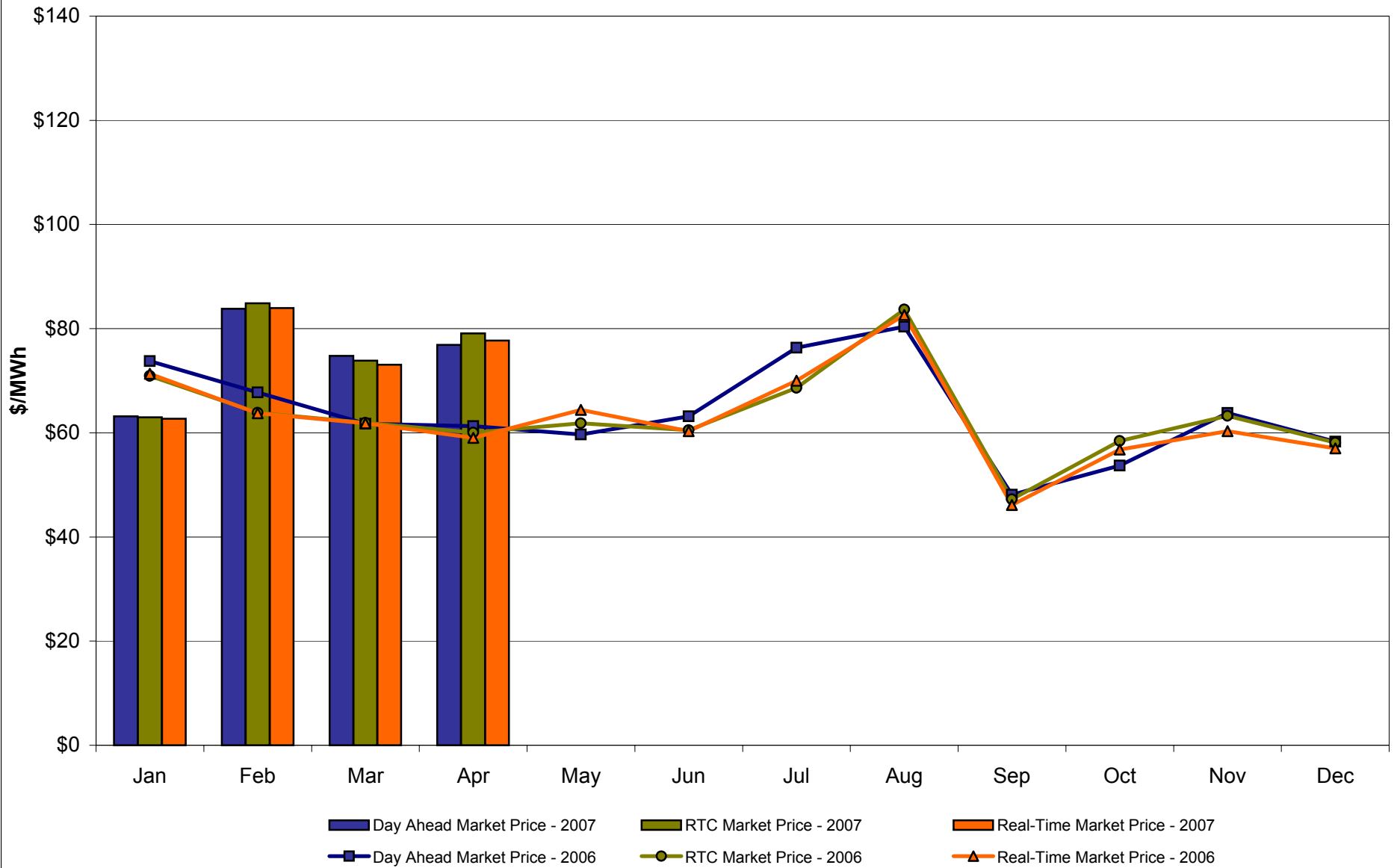
West Zone A Monthly Average LBMP Prices 2006 - 2007



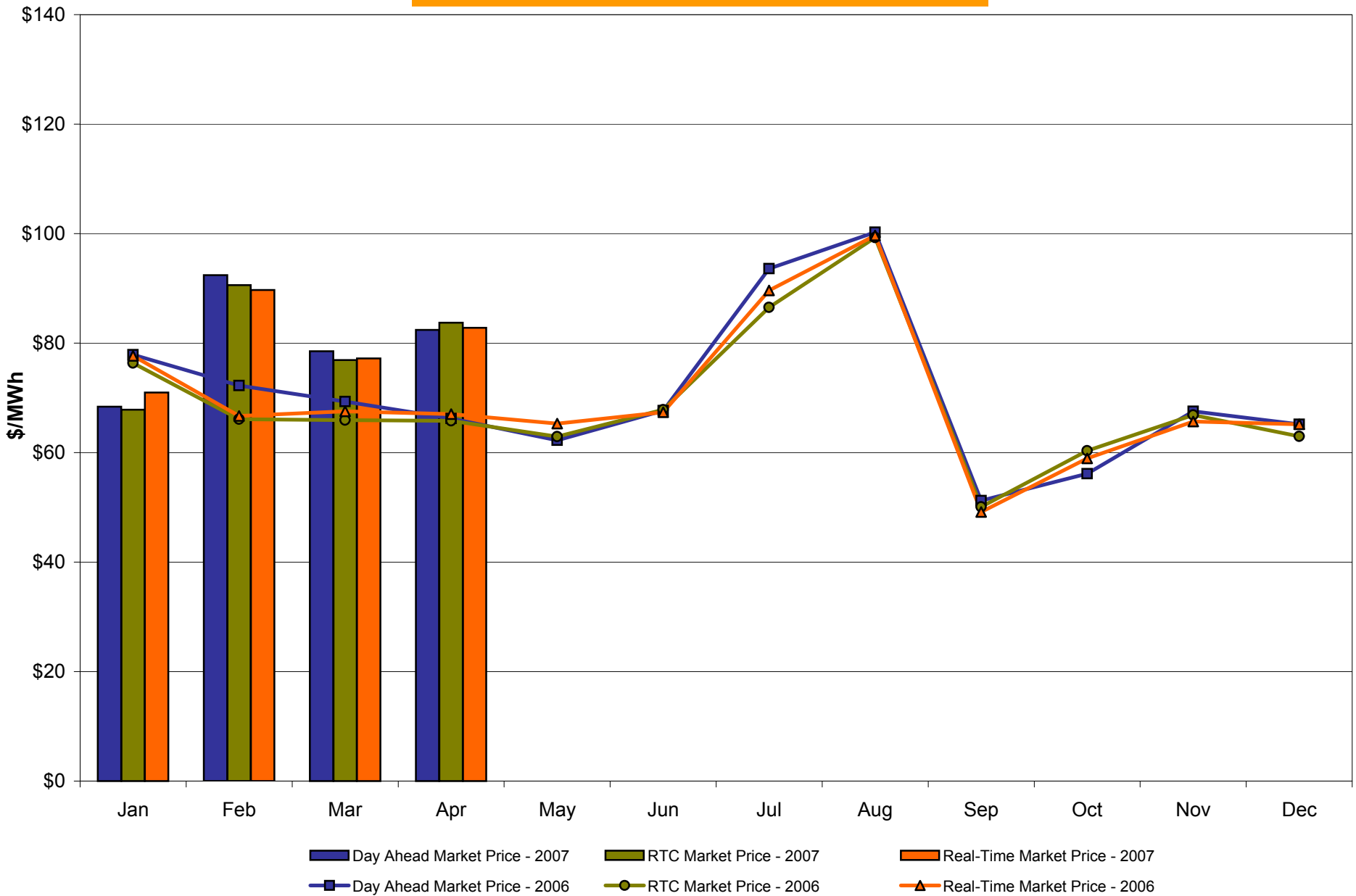
Capital Zone F Monthly Average LBMP Prices 2006 - 2007



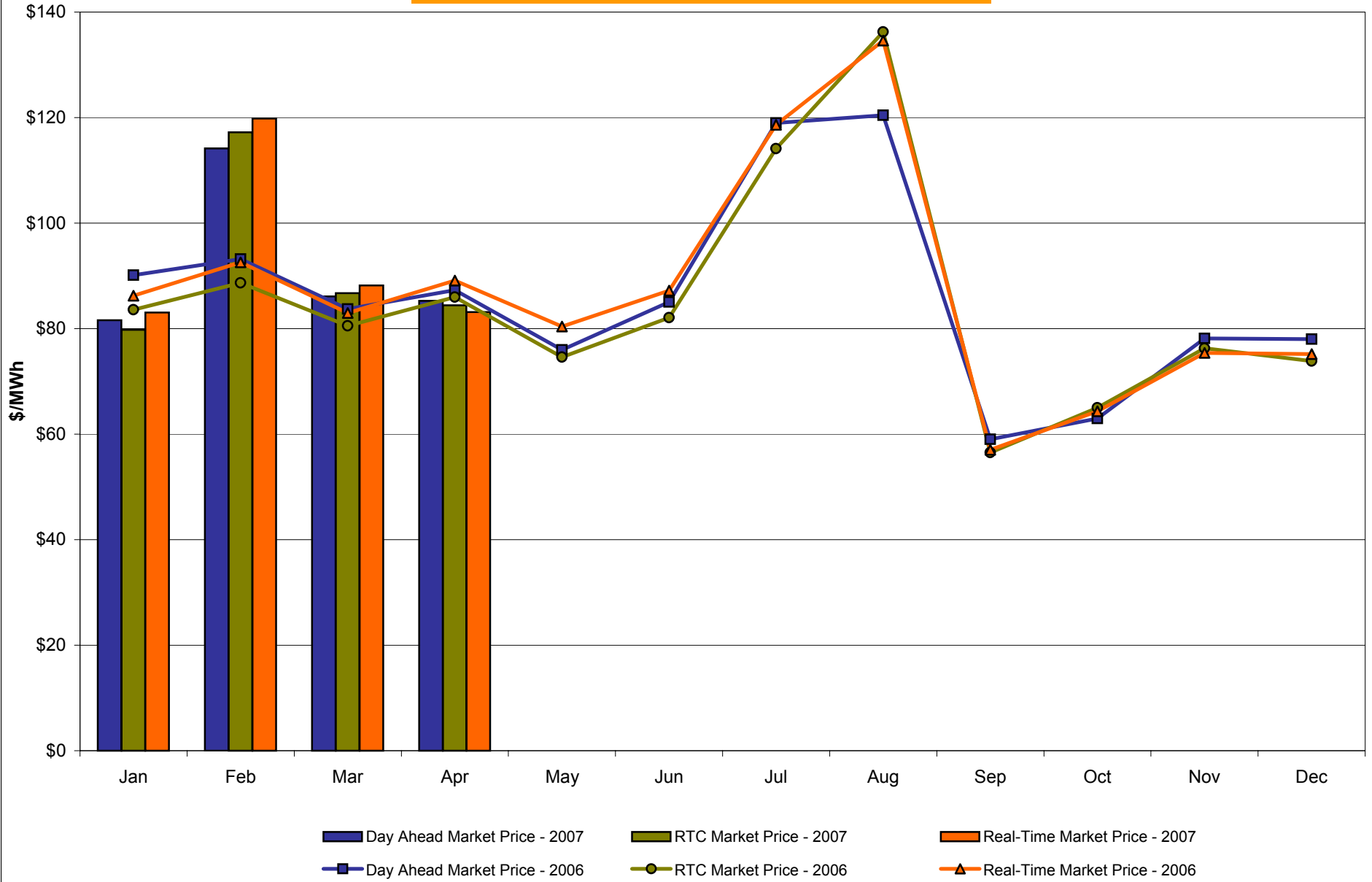
Hudson Valley Zone G Monthly Average LBMP Prices 2006 - 2007



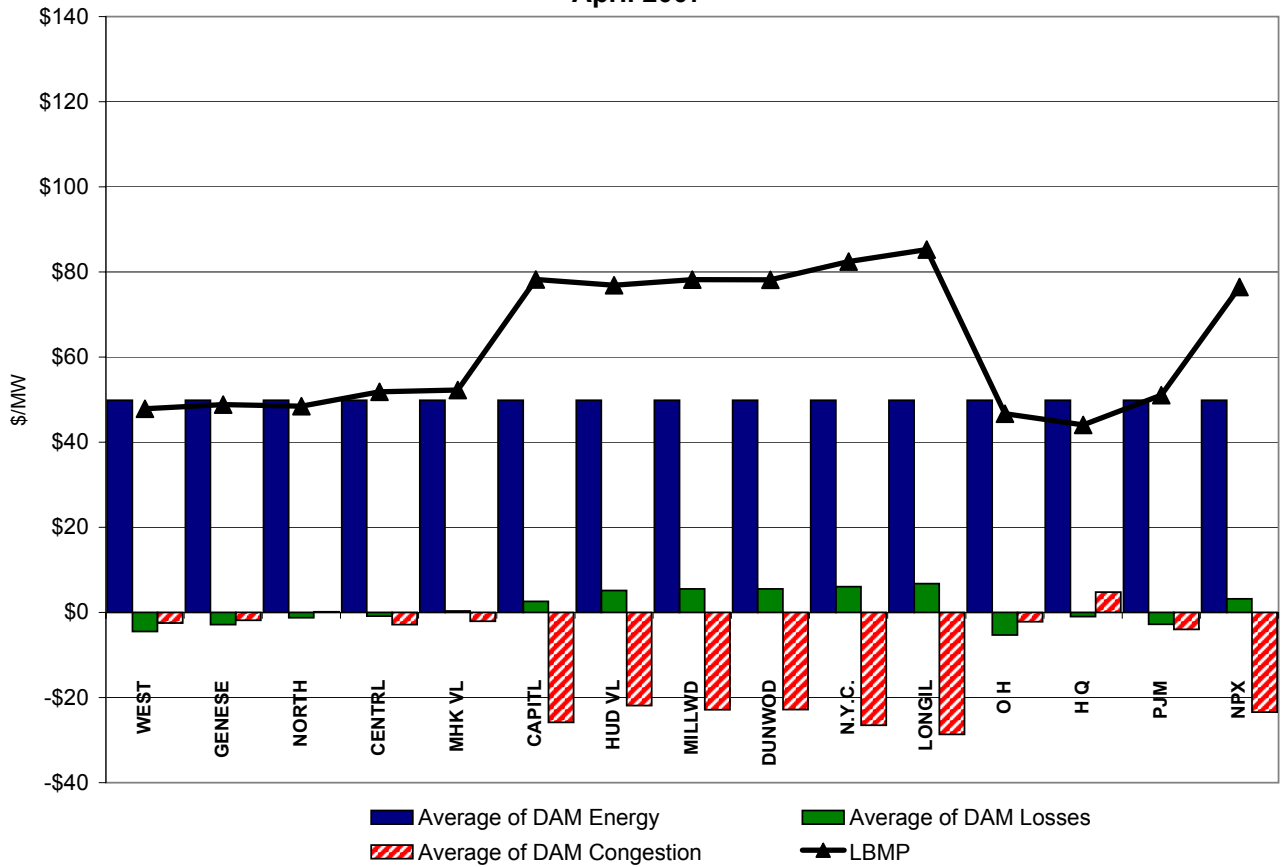
NYC Zone J Monthly Average LBMP Prices 2006 - 2007



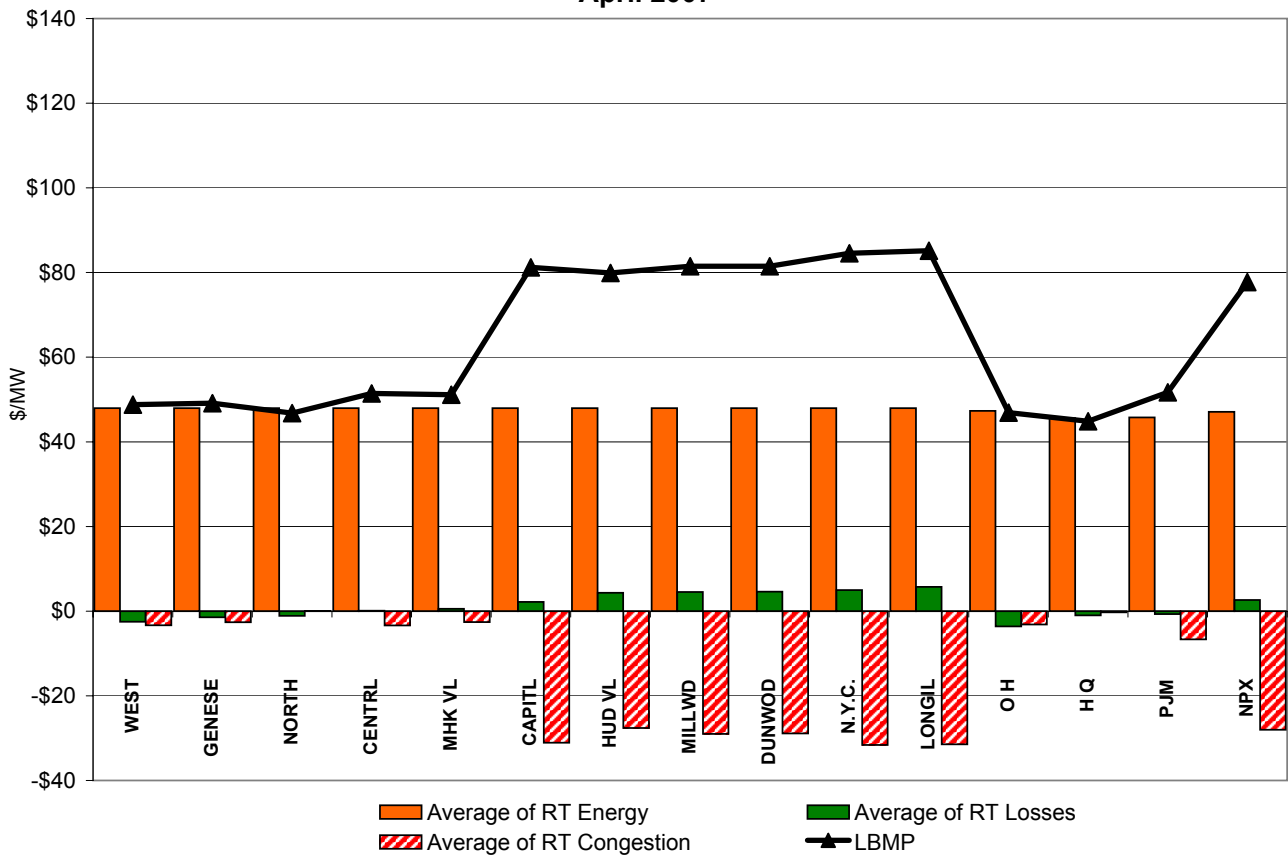
Long Island Zone K Monthly Average LBMP Prices 2006 - 2007



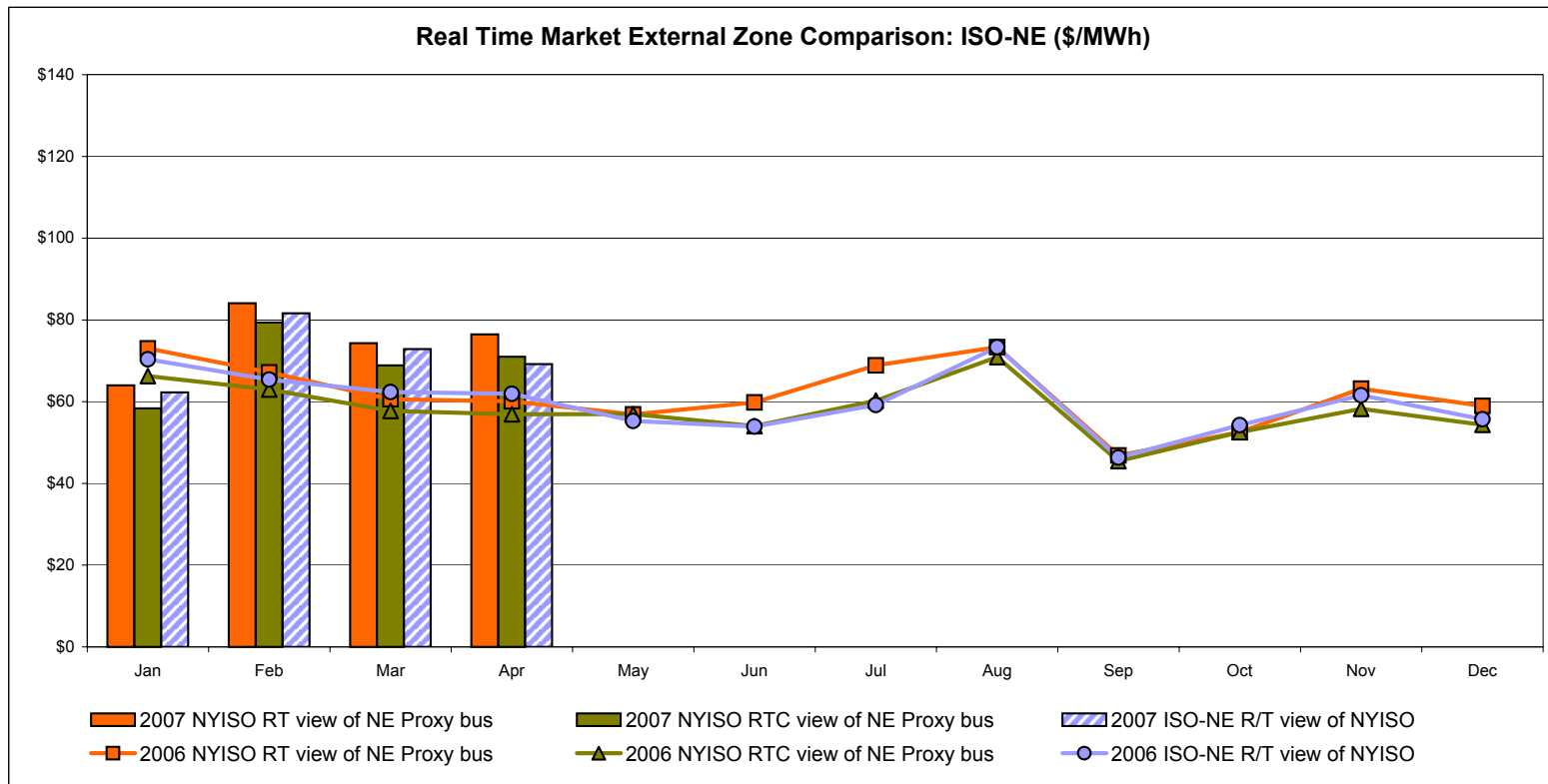
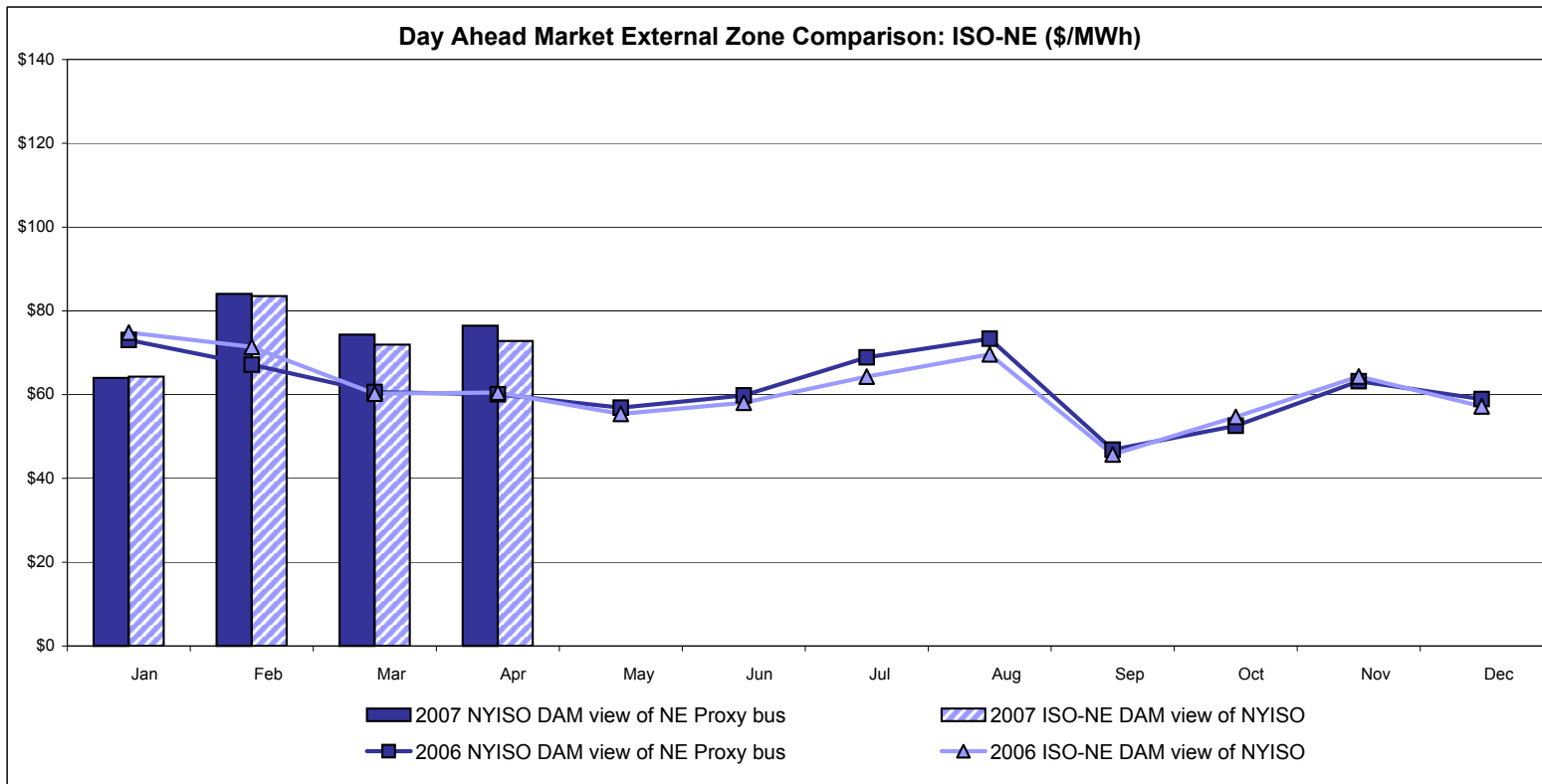
**DAM Zonal Unweighted Monthly Average LBMP Components
April 2007**



**RT Zonal Unweighted Monthly Average LBMP Components
April 2007**



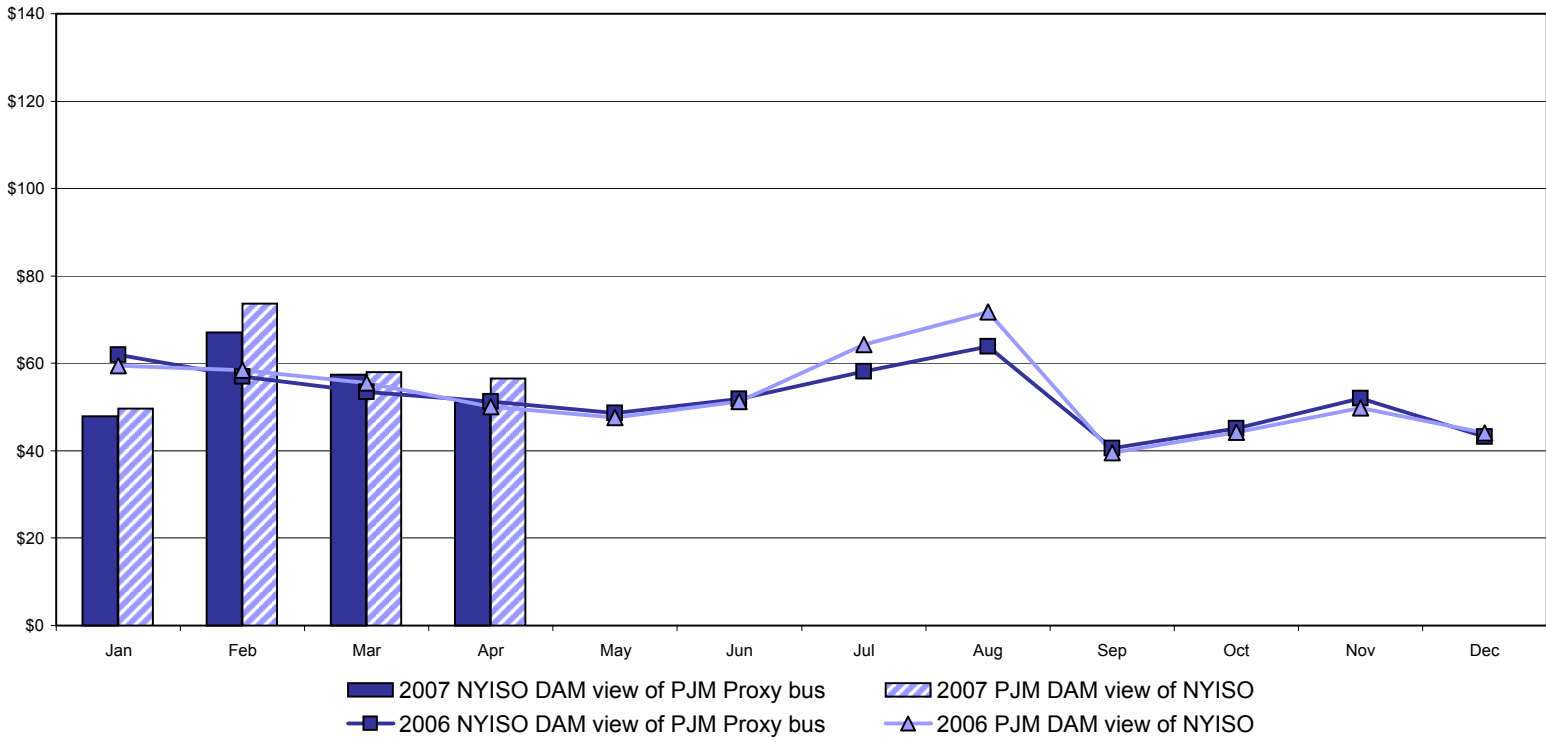
External Comparison ISO-New England



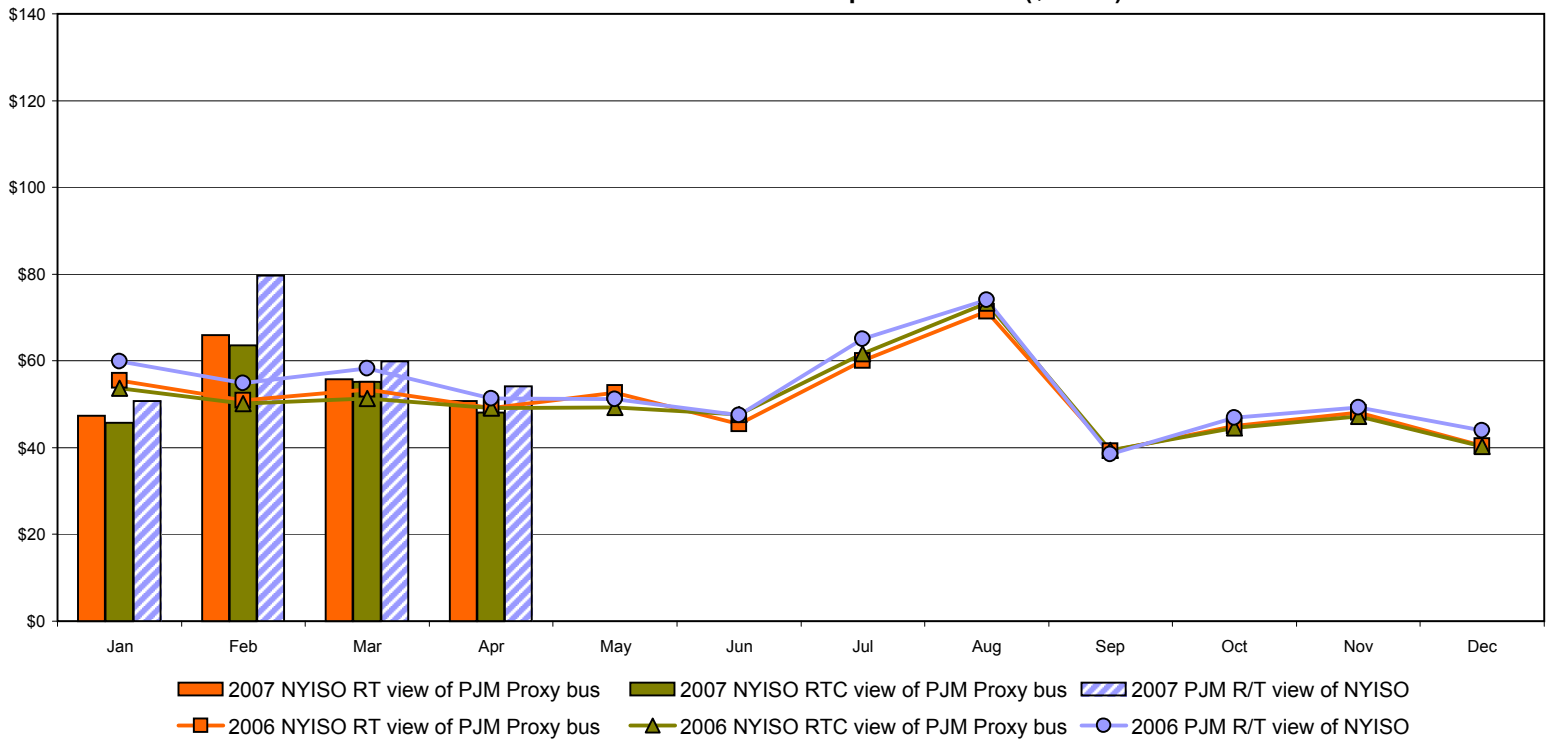
Note:
 ISO-NE Forecast is an advisory posting @ 18:00 day before.
 The DAM and R/T prices at the Roseton interface are used for ISO-NE.
 The DAM and R/T prices at the SandyPond interface are used for NYISO.

External Comparison PJM

Day Ahead Market External Zone Comparison - PJM (\$/MWh)

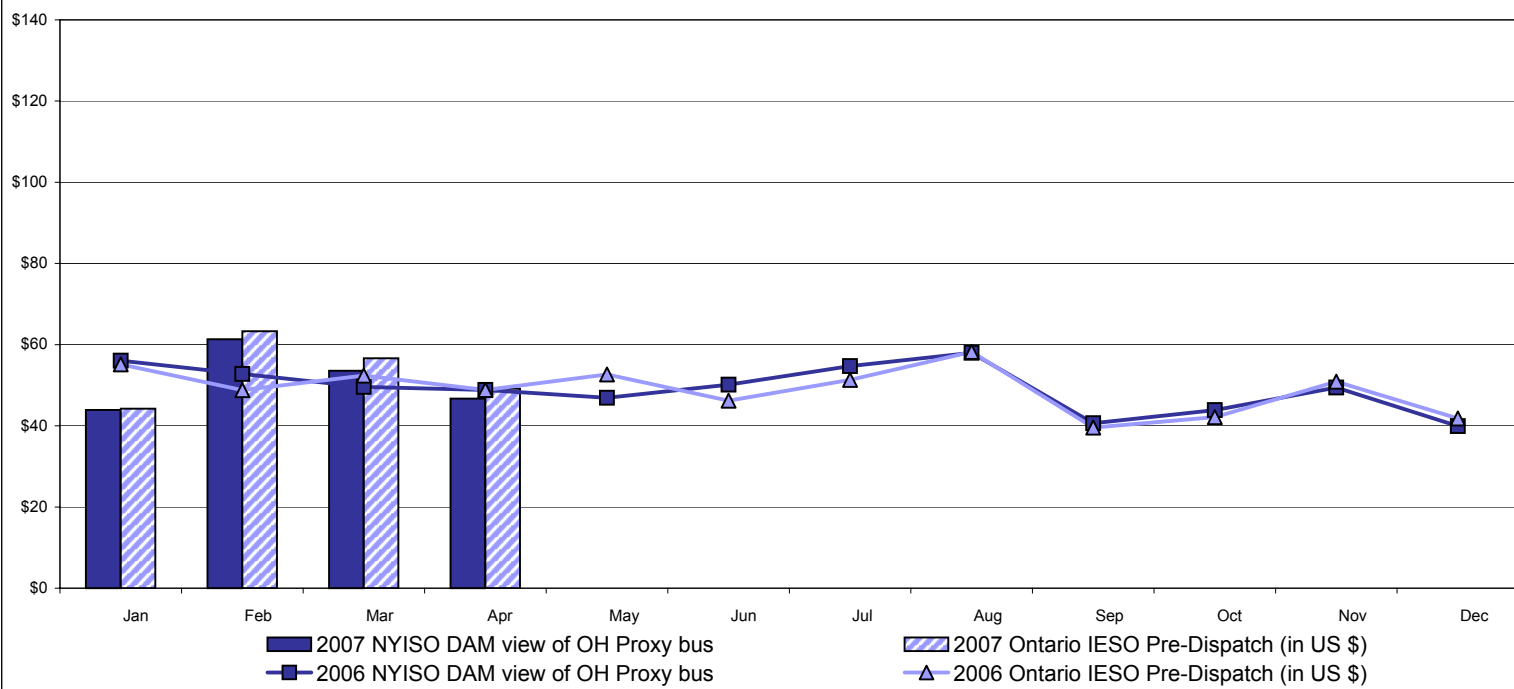


Real Time Market External Zone Comparison - PJM (\$/MWh)

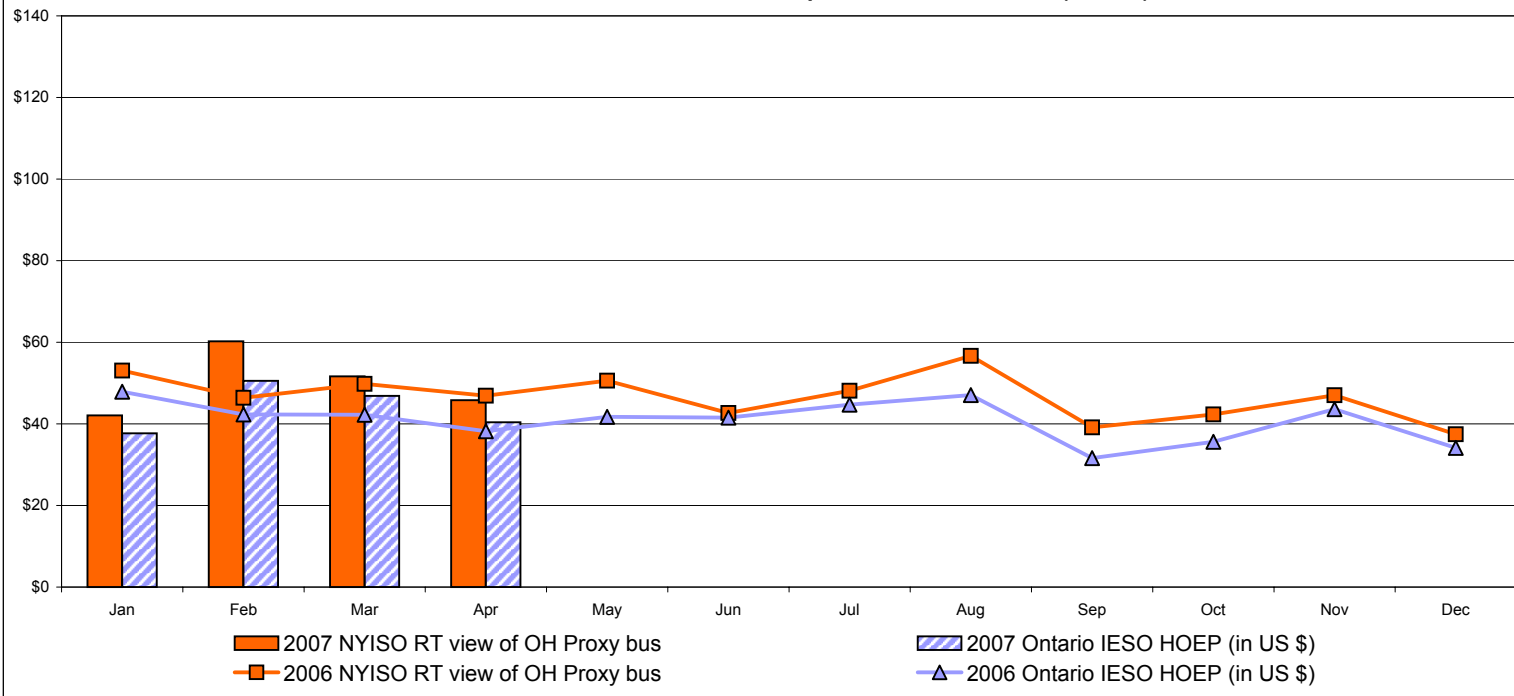


External Comparison Ontario IESO

Day Ahead Market External Zone Comparison - Ontario IESO (\$/MWh)

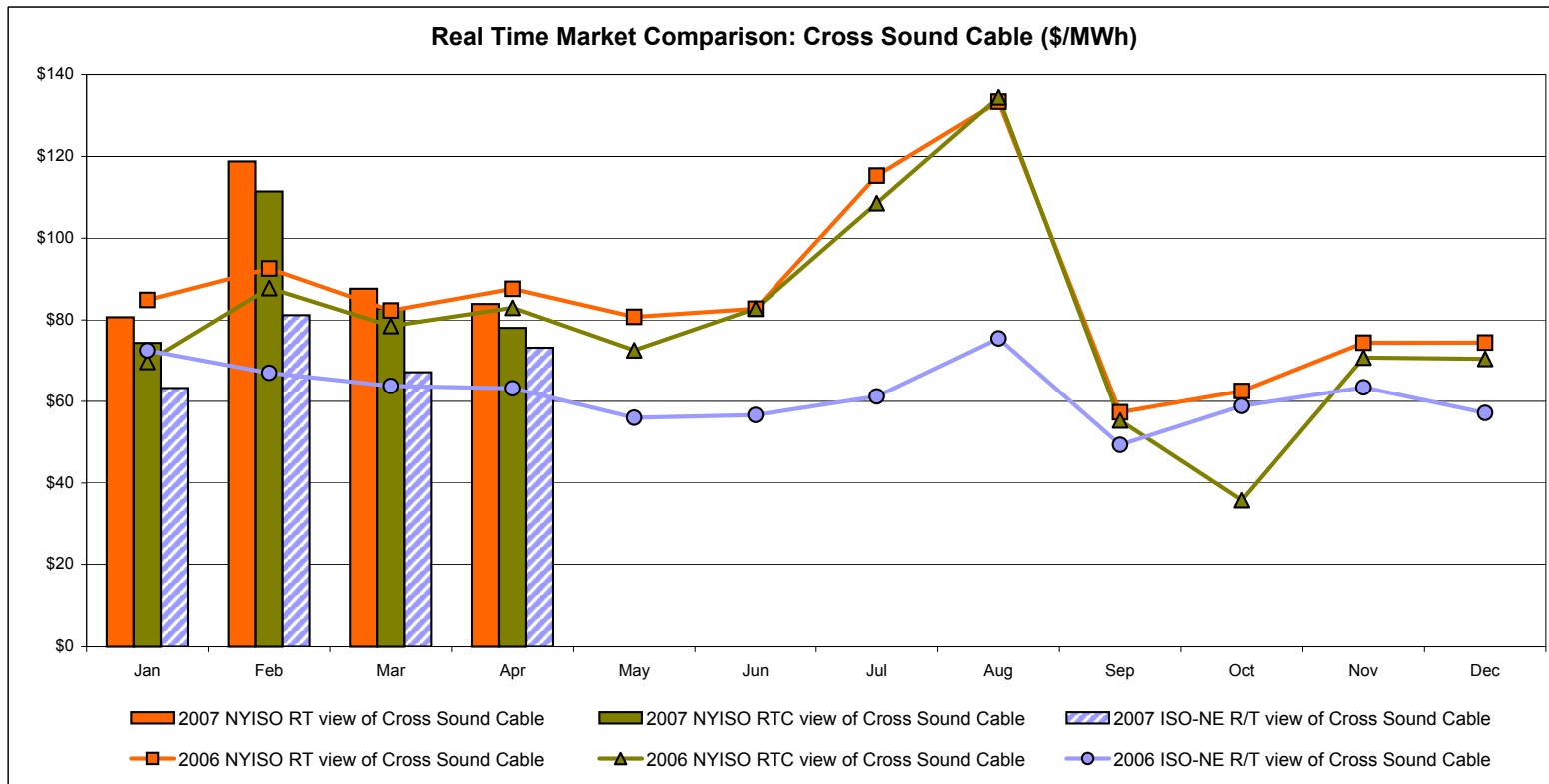
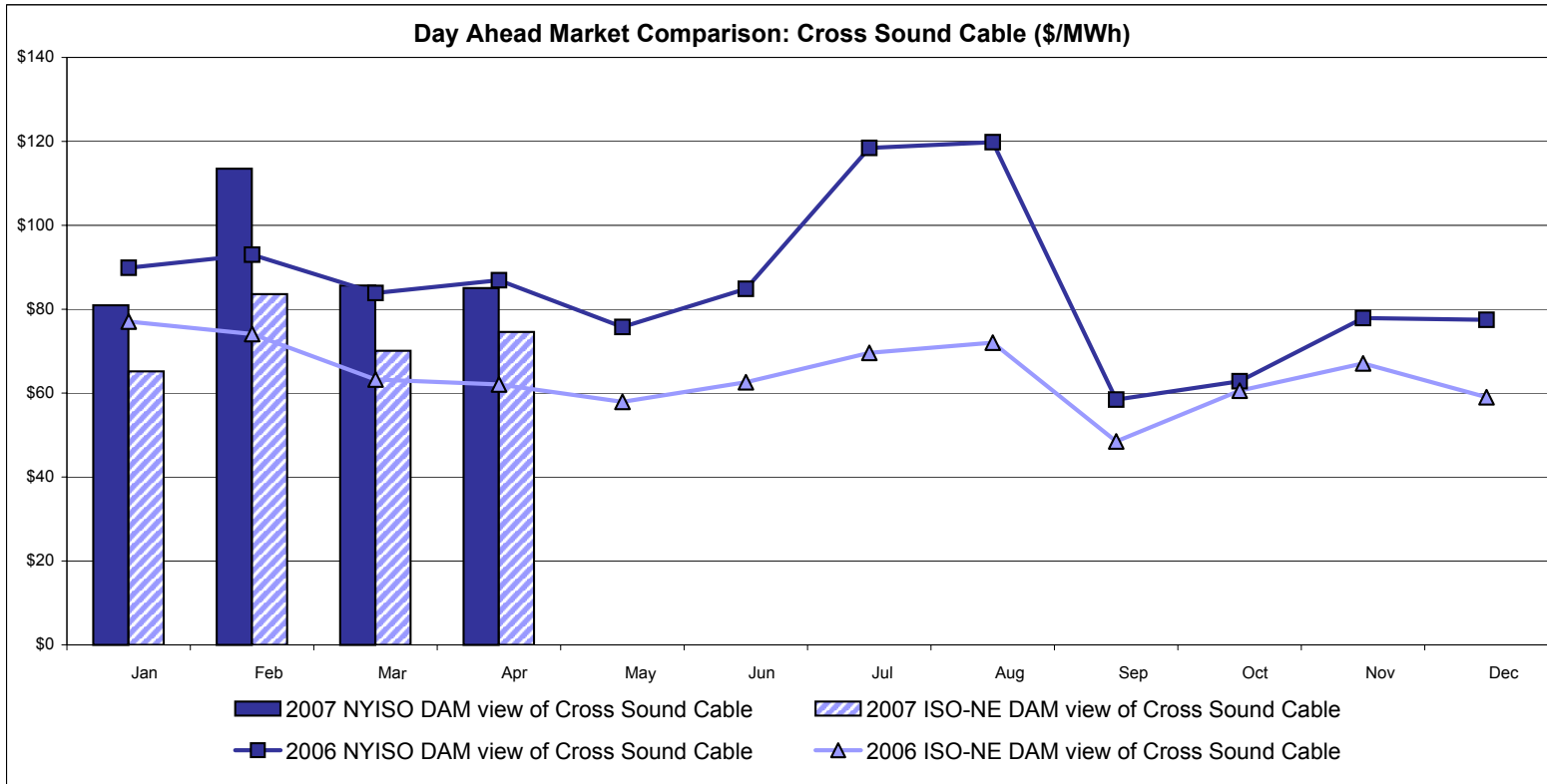


Real Time Market External Zone Comparison - Ontario IESO (\$/MWh)



Notes: Exchange factor used for April 2007 was .88 to US \$
 HOEP: Hourly Ontario Energy Price
 Pre-Dispatch: Projected Energy Price

External Controllable Line: Cross Sound Cable (New England)



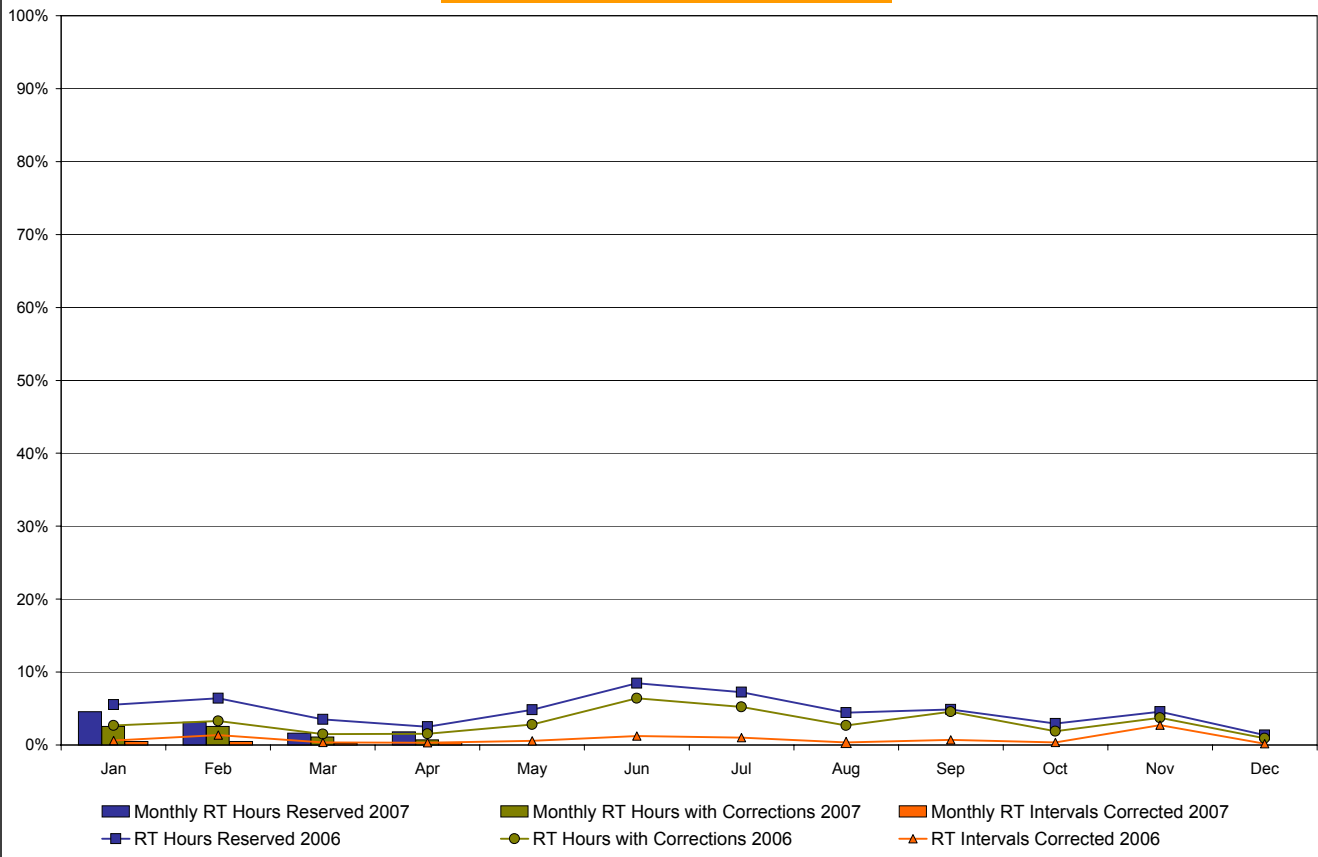
Note:
 ISO-NE Forecast is an advisory posting @ 18:00 day before.
 The DAM and R/T prices at the Shorham138 99 interface are used for ISO-NE.
 The DAM and R/T prices at the CSC interface are used for NYISO.

NYISO Real Time Price Correction Statistics

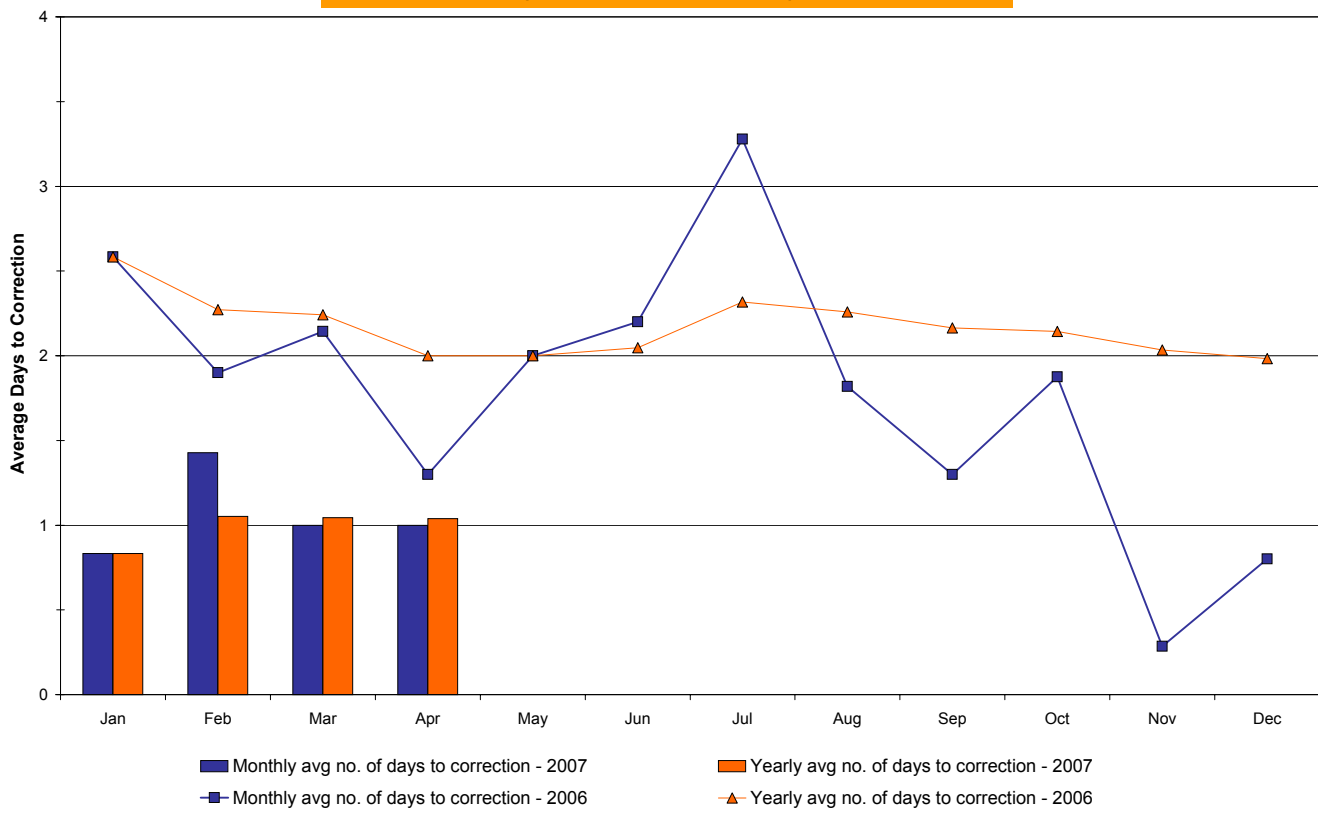
2007		<u>January</u>	<u>February</u>	<u>March</u>	<u>April</u>	<u>May</u>	<u>June</u>	<u>July</u>	<u>August</u>	<u>September</u>	<u>October</u>	<u>November</u>	<u>December</u>
Hour Corrections													
Number of hours with corrections	in the month	19	17	8	5								
Number of hours	in the month	744	672	744	720								
% of hours with corrections	in the month	2.55%	2.53%	1.08%	0.69%								
% of hours with corrections	year-to-date	2.55%	2.54%	2.04%	1.70%								
Interval Corrections													
Number of intervals corrected	in the month	44	39	19	31								
Number of intervals	in the month	8,954	8,115	9,006	8,742								
% of intervals corrected	in the month	0.49%	0.48%	0.21%	0.35%								
% of intervals corrected	year-to-date	0.49%	0.49%	0.39%	0.38%								
Hours Reserved													
Number of hours reserved	in the month	34	21	12	13								
Number of hours	in the month	744	672	744	720								
% of hours reserved	in the month	4.57%	3.13%	1.61%	1.81%								
% of hours reserved	year-to-date	4.57%	3.88%	3.10%	2.78%								
Days to Correction *													
Avg. number of days to correction	in the month	0.83	1.43	1.00	1.00								
Avg. number of days to correction	year-to-date	0.83	1.05	1.04	1.04								
Days Without Corrections													
Days without corrections	in the month	19	21	26	27								
Days without corrections	year-to-date	19	40	66	93								
2006		<u>January</u>	<u>February</u>	<u>March</u>	<u>April</u>	<u>May</u>	<u>June</u>	<u>July</u>	<u>August</u>	<u>September</u>	<u>October</u>	<u>November</u>	<u>December</u>
Hour Corrections													
Number of hours with corrections	in the month	20	22	11	11	21	46	39	20	33	14	27	7
Number of hours	in the month	744	672	744	720	744	720	744	744	720	744	720	744
% of hours with corrections	in the month	2.69%	3.27%	1.48%	1.53%	2.82%	6.39%	5.24%	2.69%	4.58%	1.88%	3.75%	0.94%
% of hours with corrections	year-to-date	2.69%	2.97%	2.45%	2.22%	2.35%	3.02%	3.34%	3.26%	3.40%	3.25%	3.29%	3.09%
Interval Corrections													
Number of intervals corrected	in the month	54	112	33	27	51	107	92	31	63	30	235	14
Number of intervals	in the month	9,004	8,129	9,035	8,779	9,037	8,742	9,083	9,088	8,776	9,021	8,700	8,916
% of intervals corrected	in the month	0.60%	1.38%	0.37%	0.31%	0.56%	1.22%	1.01%	0.34%	0.72%	0.33%	2.70%	0.16%
% of intervals corrected	year-to-date	0.60%	0.97%	0.76%	0.65%	0.63%	0.73%	0.77%	0.72%	0.72%	0.68%	0.86%	0.80%
Hours Reserved													
Number of hours reserved	in the month	41	43	26	18	36	61	54	33	35	22	33	10
Number of hours	in the month	744	672	744	720	744	720	744	744	720	744	720	744
% of hours reserved	in the month	5.51%	6.40%	3.49%	2.50%	4.84%	8.47%	7.26%	4.44%	4.86%	2.96%	4.58%	1.34%
% of hours reserved	year-to-date	5.51%	5.93%	5.09%	4.44%	4.53%	5.18%	5.48%	5.35%	5.30%	5.06%	5.01%	4.70%
Days to Correction *													
Avg. number of days to correction	in the month	2.58	1.90	2.14	1.30	2.00	2.20	3.28	1.82	1.30	1.88	0.29	0.80
Avg. number of days to correction	year-to-date	2.58	2.27	2.24	2.00	2.00	2.05	2.32	2.26	2.17	2.14	2.03	1.98
Days Without Corrections													
Days without corrections	in the month	19	18	24	20	21	15	13	20	20	23	23	26
Days without corrections	year-to-date	19	37	61	81	102	117	130	150	170	193	216	242

* Calendar days from reservation date.

Percentage of Real-Time Corrections

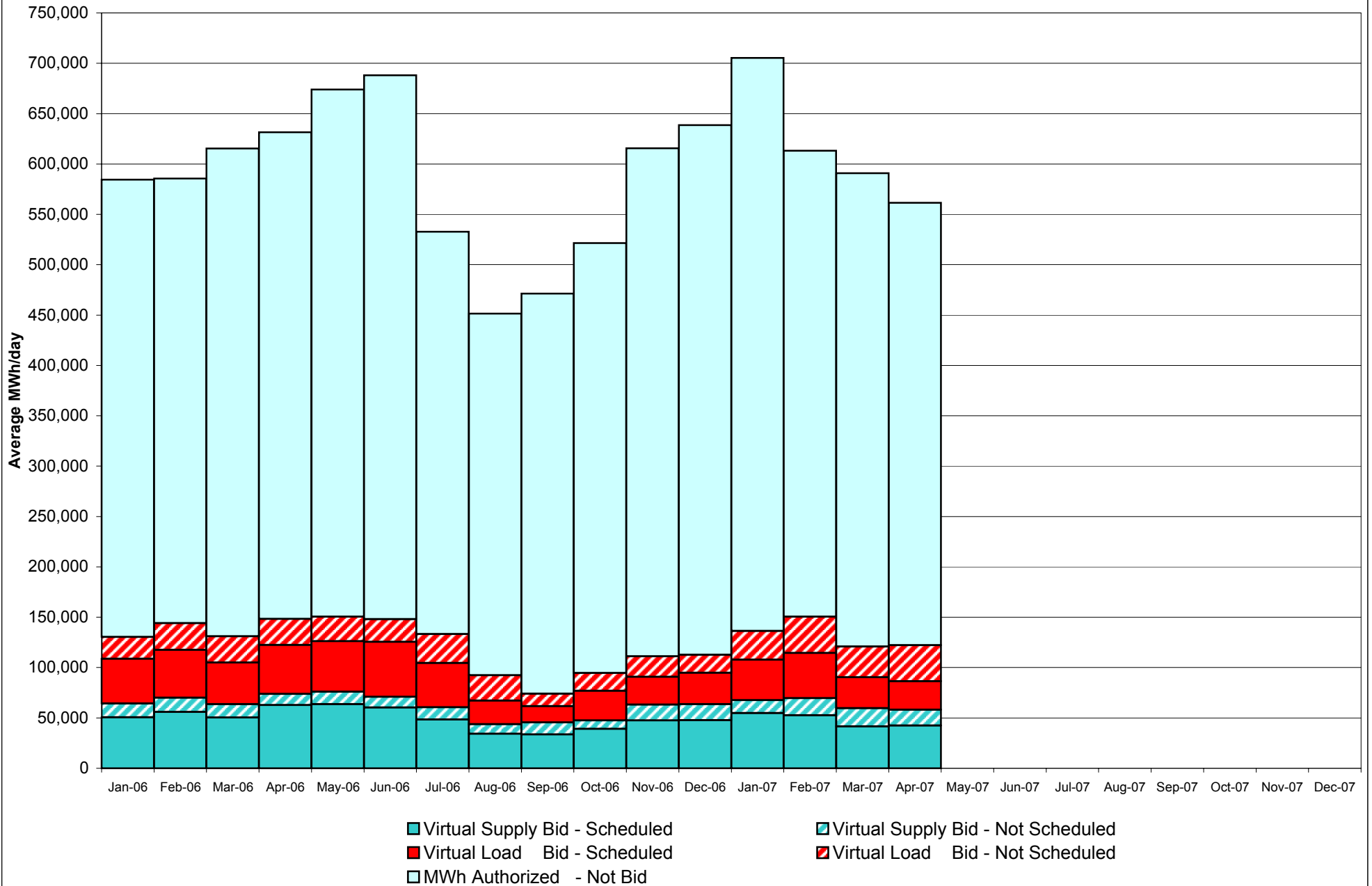


Annual average time period for making Price Corrections (from reservation date) *

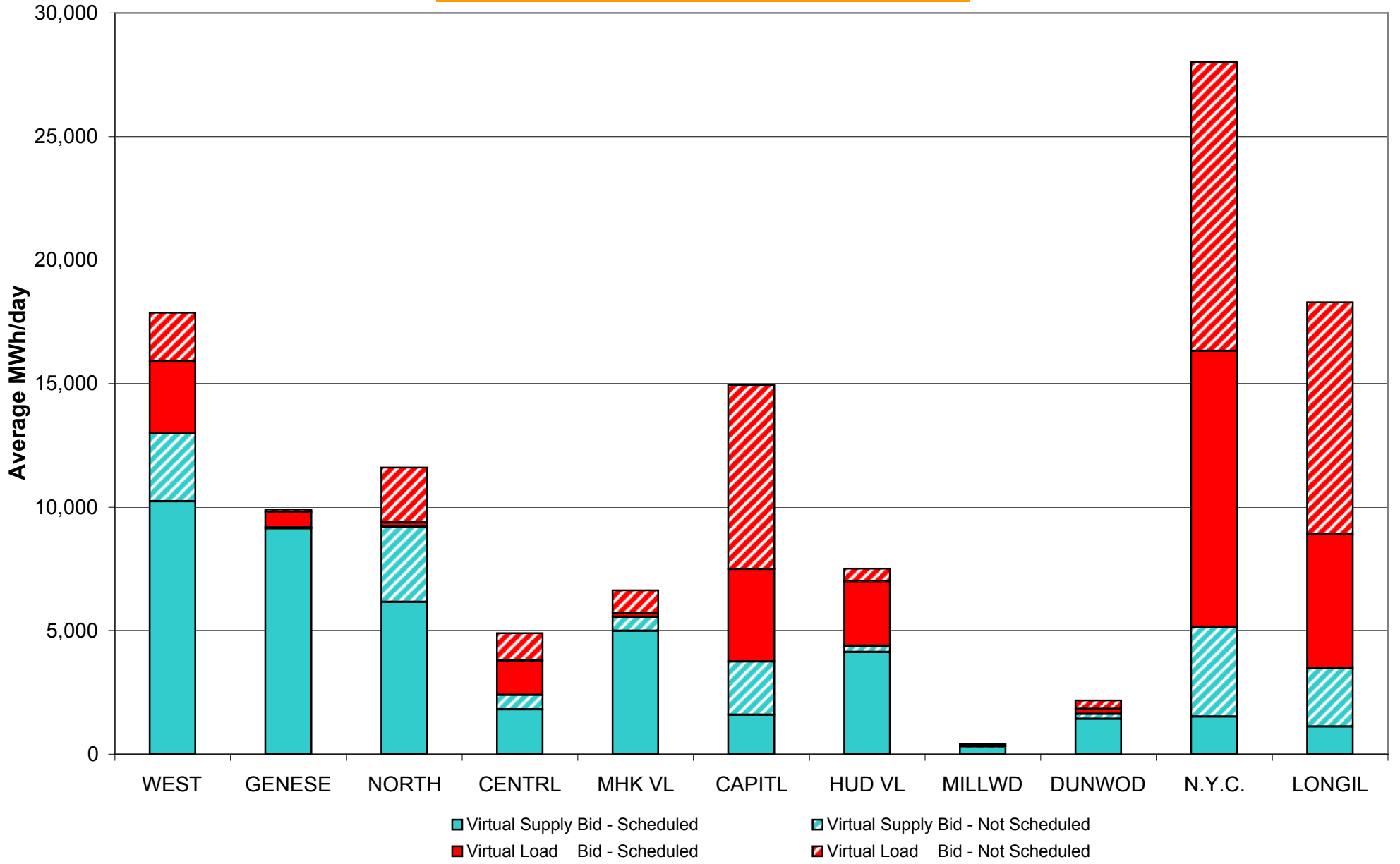


* Calendar days from reservation date.

NYISO Virtual Trading Average MWh per day



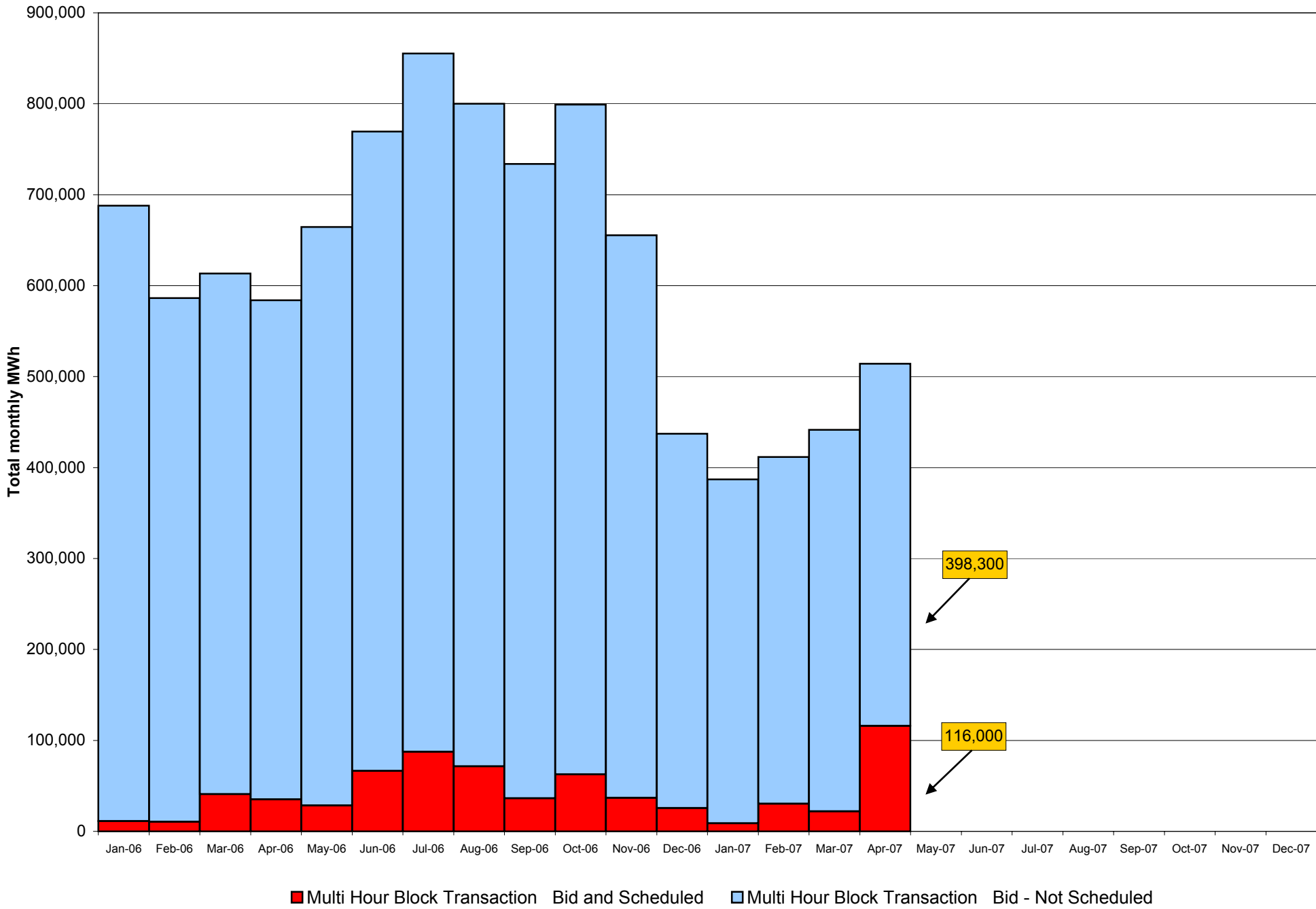
Virtual Load and Supply Zonal Statistics April 2007



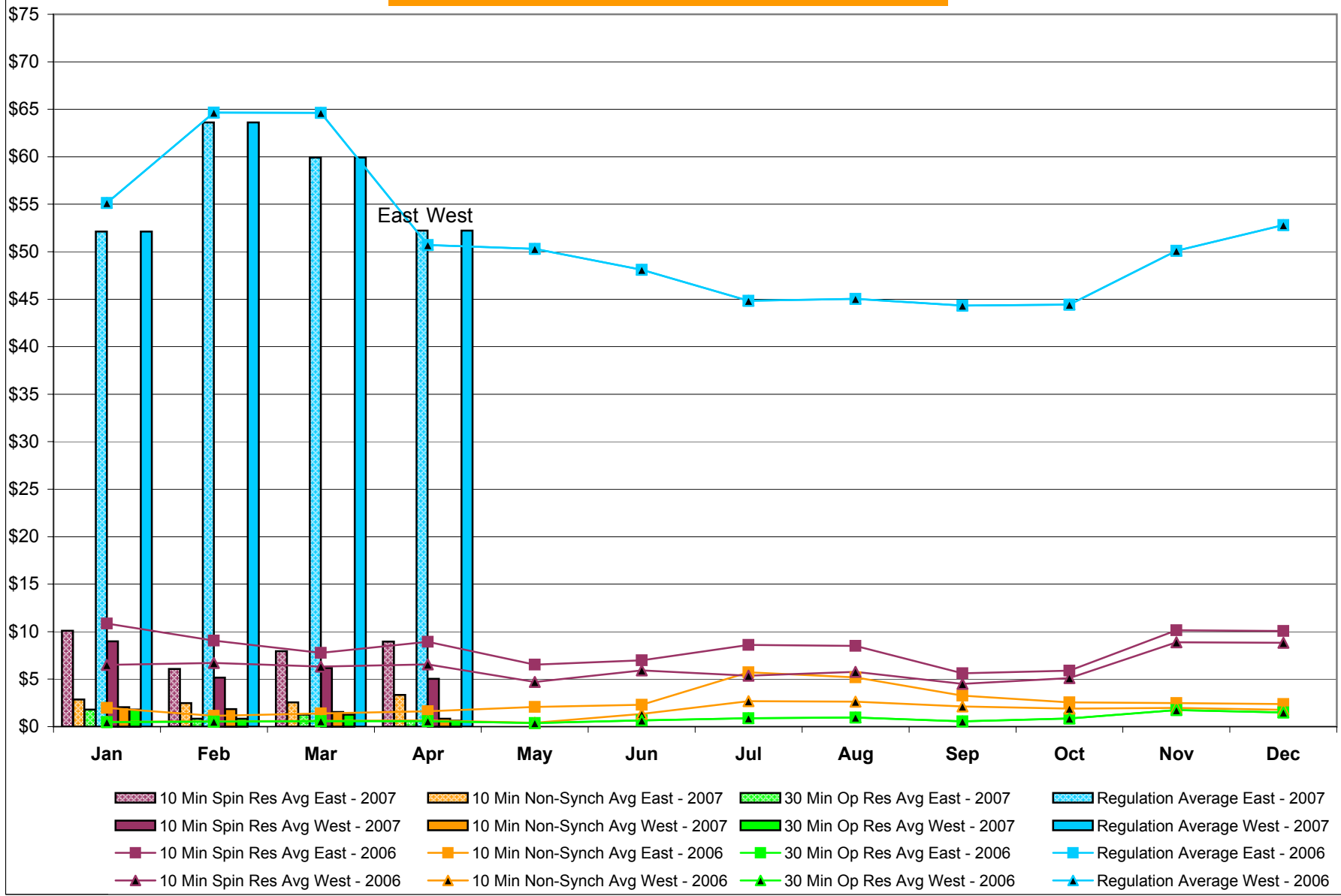
Virtual Load and Supply Zonal Statistics (Average MWh/day) - 2007

		Virtual Load Bid		Virtual Supply Bid				Virtual Load Bid		Virtual Supply Bid				Virtual Load Bid		Virtual Supply Bid	
Zone	Date	Scheduled	Not Scheduled	Scheduled	Not Scheduled	Zone	Date	Scheduled	Not Scheduled	Scheduled	Not Scheduled	Zone	Date	Scheduled	Not Scheduled	Scheduled	Not Scheduled
WEST	Jan-07	5,737	974	9,006	1,063	MHK VL	Jan-07	125	952	7,872	450	DUNWOD	Jan-07	838	728	2,560	131
	Feb-07	6,545	2,261	8,207	2,278		Feb-07	120	951	8,339	452		Feb-07	431	59	2,222	292
	Mar-07	4,370	947	6,751	3,223		Mar-07	50	905	6,386	653		Mar-07	632	20	1,168	92
	Apr-07	2,928	1,952	10,240	2,743		Apr-07	152	912	4,990	572		Apr-07	195	351	1,416	209
	May-07						May-07						May-07				
	Jun-07						Jun-07						Jun-07				
	Jul-07						Jul-07						Jul-07				
	Aug-07						Aug-07						Aug-07				
	Sep-07						Sep-07						Sep-07				
	Oct-07						Oct-07						Oct-07				
	Nov-07						Nov-07						Nov-07				
	Dec-07						Dec-07						Dec-07				
GENESE	Jan-07	1,034	109	8,201	68	CAPITL	Jan-07	4,704	5,082	2,189	2,757	N.Y.C.	Jan-07	18,957	9,471	2,811	3,033
	Feb-07	1,264	45	8,050	113		Feb-07	5,507	6,247	1,636	1,785		Feb-07	20,717	12,000	1,243	4,469
	Mar-07	787	107	7,282	48		Mar-07	3,735	6,111	1,886	1,601		Mar-07	10,921	10,386	2,369	4,287
	Apr-07	631	96	9,131	36		Apr-07	3,735	7,457	1,585	2,188		Apr-07	11,159	11,688	1,519	3,640
	May-07						May-07						May-07				
	Jun-07						Jun-07						Jun-07				
	Jul-07						Jul-07						Jul-07				
	Aug-07						Aug-07						Aug-07				
	Sep-07						Sep-07						Sep-07				
	Oct-07						Oct-07						Oct-07				
	Nov-07						Nov-07						Nov-07				
	Dec-07						Dec-07						Dec-07				
NORTH	Jan-07	176	2,309	5,826	1,619	HUD VL	Jan-07	1,714	668	9,364	440	LONGIL	Jan-07	5,703	6,929	2,063	2,518
	Feb-07	103	2,381	5,185	2,539		Feb-07	1,302	889	11,559	1,461		Feb-07	6,854	9,983	757	3,293
	Mar-07	110	2,339	5,994	3,760		Mar-07	2,492	725	5,372	500		Mar-07	5,924	7,765	1,029	3,059
	Apr-07	173	2,224	6,158	3,047		Apr-07	2,624	509	4,137	239		Apr-07	5,414	9,393	1,121	2,364
	May-07						May-07						May-07				
	Jun-07						Jun-07						Jun-07				
	Jul-07						Jul-07						Jul-07				
	Aug-07						Aug-07						Aug-07				
	Sep-07						Sep-07						Sep-07				
	Oct-07						Oct-07						Oct-07				
	Nov-07						Nov-07						Nov-07				
	Dec-07						Dec-07						Dec-07				
CENTRL	Jan-07	1,085	1,116	3,185	568	MILLWD	Jan-07	313	17	1,787	2	NYISO	Jan-07	40,385	28,353	54,863	12,649
	Feb-07	1,539	1,214	4,350	450		Feb-07	344	4	1,032	7		Feb-07	44,727	36,035	52,580	17,137
	Mar-07	1,211	1,139	2,746	888		Mar-07	328	16	660	11		Mar-07	30,559	30,460	41,644	18,122
	Apr-07	1,377	1,120	1,803	597		Apr-07	89	21	301	1		Apr-07	28,476	35,722	42,401	15,616
	May-07						May-07						May-07				
	Jun-07						Jun-07						Jun-07				
	Jul-07						Jul-07						Jul-07				
	Aug-07						Aug-07						Aug-07				
	Sep-07						Sep-07						Sep-07				
	Oct-07						Oct-07						Oct-07				
	Nov-07						Nov-07						Nov-07				
	Dec-07						Dec-07						Dec-07				

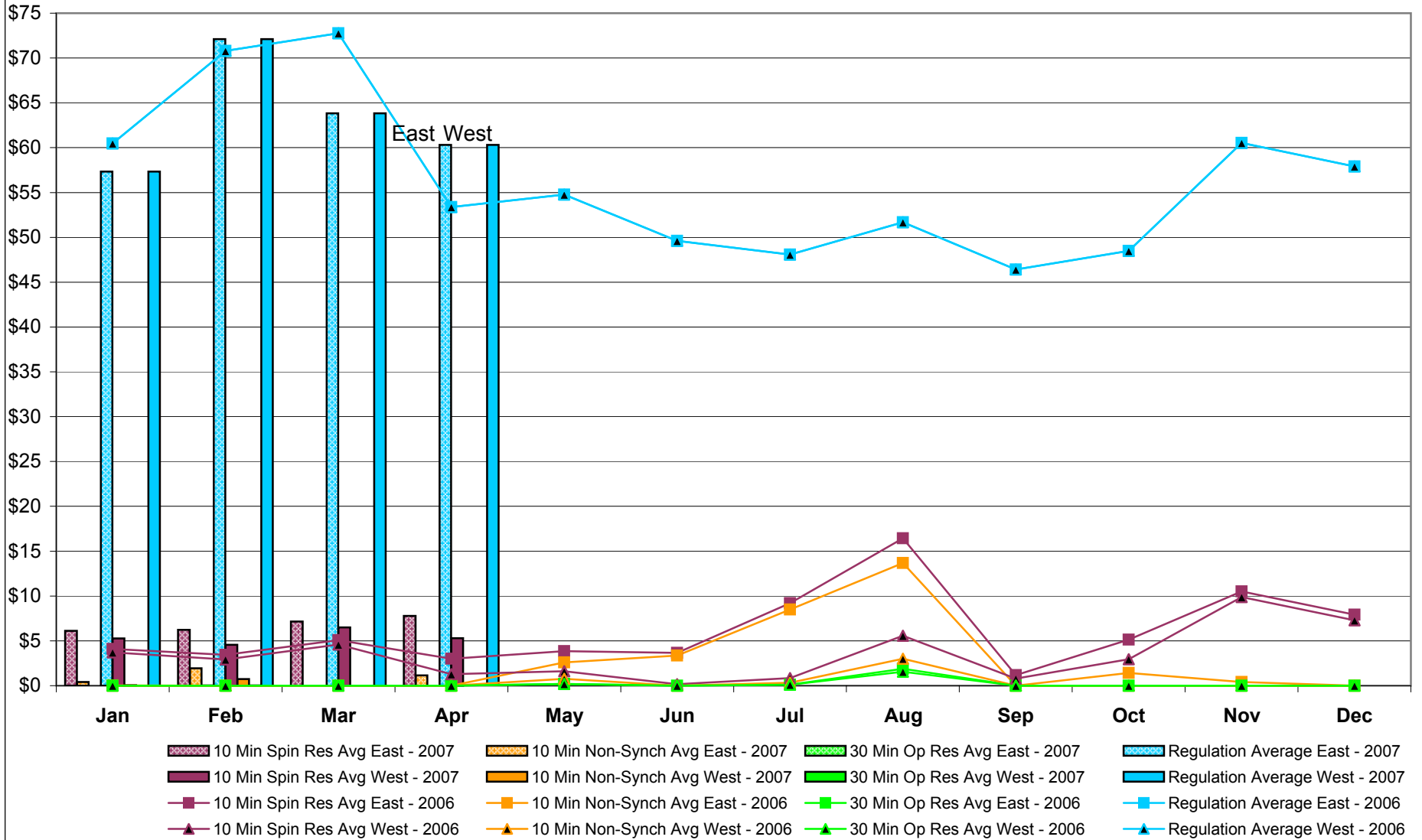
NYISO Multi Hour Block Transactions Monthly Total MWh



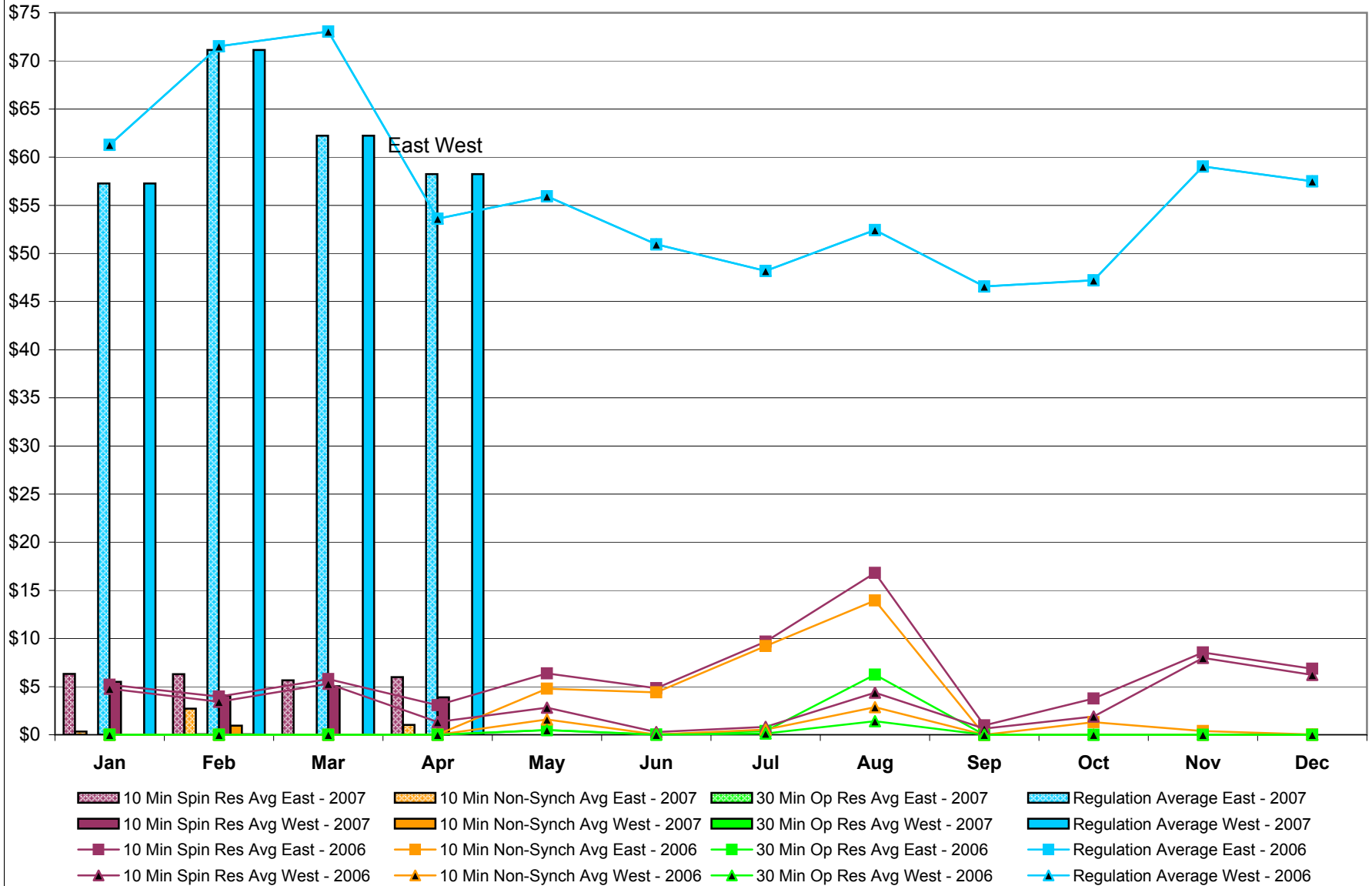
NYISO Monthly Average Ancillary Service Prices Day Ahead Market 2006 - 2007



NYISO Monthly Average Ancillary Service Prices RTC Market 2006 - 2007



NYISO Monthly Average Ancillary Service Prices Real Time Market 2006 - 2007



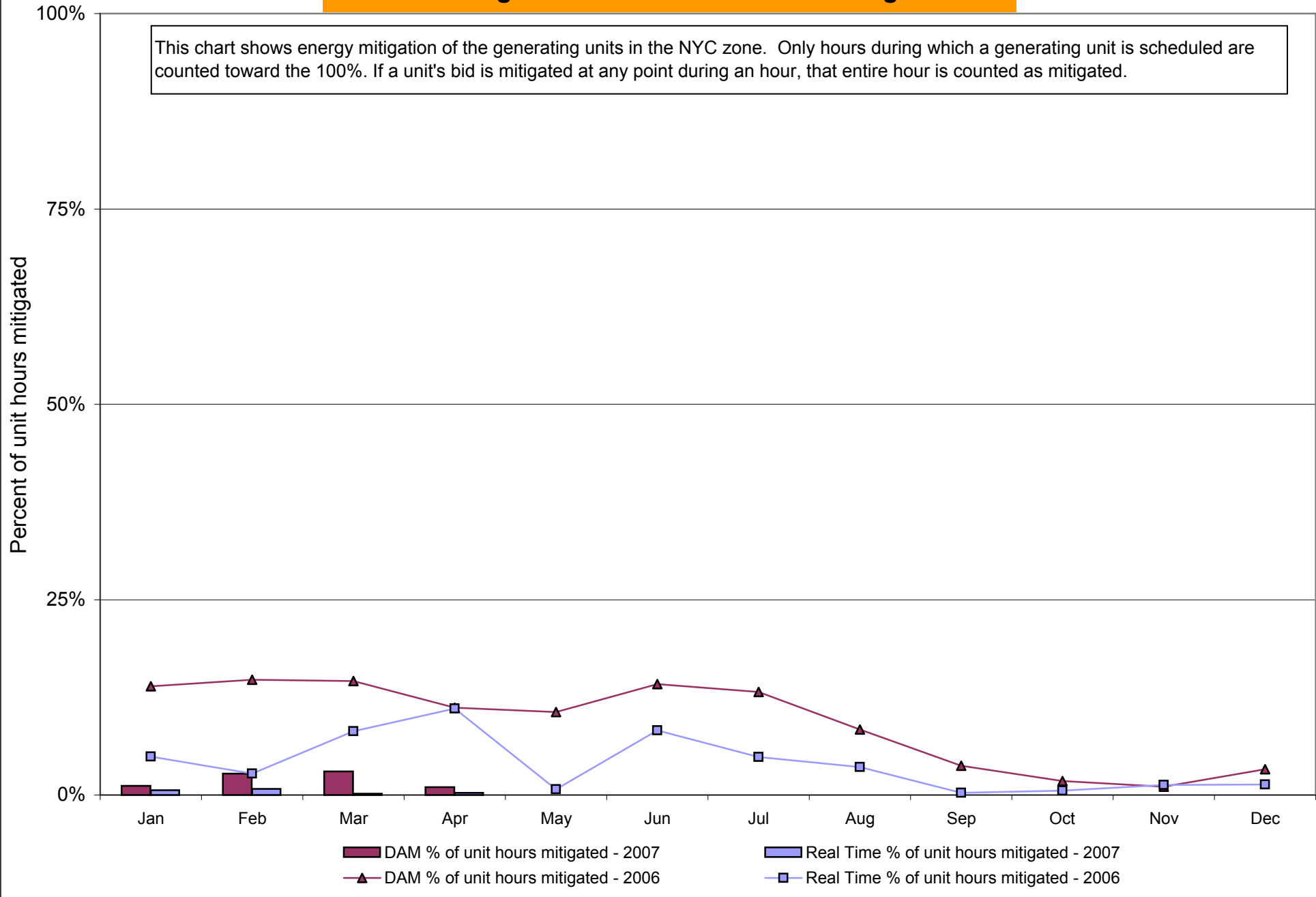
NYISO Markets Ancillary Services Statistics - Unweighted Price (\$/MWH)

2007	<u>January</u>	<u>February</u>	<u>March</u>	<u>April</u>	<u>May</u>	<u>June</u>	<u>July</u>	<u>August</u>	<u>September</u>	<u>October</u>	<u>November</u>	<u>December</u>
Day Ahead Market												
10 Min Spin East	10.10	6.08	7.94	8.95								
10 Min Spin West	8.97	5.17	6.18	5.03								
10 Min Non Synch East	2.87	2.49	2.56	3.35								
10 Min Non Synch West	2.06	1.85	1.53	0.84								
30 Min East	1.79	0.85	1.26	0.64								
30 Min West	1.79	0.85	1.26	0.64								
Regulation East	52.12	63.61	59.92	52.22								
Regulation West	52.12	63.61	59.92	52.22								
RTC Market												
10 Min Spin East	6.12	6.23	7.17	7.77								
10 Min Spin West	5.26	4.57	6.49	5.29								
10 Min Non Synch East	0.41	1.94	0.00	1.16								
10 Min Non Synch West	0.05	0.75	0.00	0.00								
30 Min East	0.00	0.04	0.00	0.00								
30 Min West	0.00	0.04	0.00	0.00								
Regulation East	57.33	72.11	63.84	60.31								
Regulation West	57.33	72.11	63.84	60.31								
Real Time Market												
10 Min Spin East	6.32	6.30	5.66	5.98								
10 Min Spin West	5.51	4.10	5.04	3.89								
10 Min Non Synch East	0.34	2.72	0.00	1.01								
10 Min Non Synch West	0.01	0.95	0.00	0.00								
30 Min East	0.00	0.05	0.00	0.00								
30 Min West	0.00	0.05	0.00	0.00								
Regulation East	57.26	71.13	62.24	58.23								
Regulation West	57.26	71.13	62.24	58.23								
2006	<u>January</u>	<u>February</u>	<u>March</u>	<u>April</u>	<u>May</u>	<u>June</u>	<u>July</u>	<u>August</u>	<u>September</u>	<u>October</u>	<u>November</u>	<u>December</u>
Day Ahead Market												
10 Min Spin East	10.86	9.06	7.76	8.94	6.52	6.98	8.60	8.50	5.62	5.90	10.14	10.07
10 Min Spin West	6.50	6.70	6.32	6.56	4.71	5.92	5.37	5.76	4.49	5.11	8.89	8.82
10 Min Non Synch East	1.97	1.15	1.39	1.63	2.07	2.31	5.71	5.19	3.25	2.55	2.48	2.38
10 Min Non Synch West	0.50	0.56	0.62	0.66	0.40	1.34	2.69	2.64	2.13	1.90	1.97	1.76
30 Min East	0.48	0.52	0.59	0.58	0.38	0.66	0.89	0.95	0.56	0.87	1.74	1.49
30 Min West	0.48	0.52	0.59	0.58	0.38	0.66	0.89	0.95	0.56	0.87	1.74	1.49
Regulation East	55.13	64.65	64.62	50.71	50.30	48.10	44.83	45.04	44.34	44.43	50.11	52.81
Regulation West	55.13	64.65	64.62	50.71	50.30	48.10	44.83	45.04	44.34	44.43	50.11	52.81
RTC Market												
10 Min Spin East	4.10	3.44	5.07	3.00	3.86	3.65	9.19	16.44	1.17	5.12	10.52	7.93
10 Min Spin West	3.71	2.93	4.59	1.28	1.60	0.18	0.85	5.56	0.79	2.96	9.87	7.30
10 Min Non Synch East	0.02	0.01	0.00	0.01	2.60	3.36	8.48	13.68	0.00	1.43	0.40	0.01
10 Min Non Synch West	0.00	0.00	0.00	0.00	0.77	0.00	0.32	3.01	0.00	0.01	0.00	0.00
30 Min East	0.00	0.00	0.00	0.00	0.19	0.00	0.11	1.90	0.00	0.00	0.00	0.00
30 Min West	0.00	0.00	0.00	0.00	0.19	0.00	0.11	1.57	0.00	0.00	0.00	0.00
Regulation East	60.46	70.79	72.76	53.37	54.76	49.60	48.08	51.68	46.42	48.49	60.52	57.91
Regulation West	60.46	70.79	72.76	53.37	54.76	49.60	48.08	51.68	46.42	48.49	60.52	57.91
Real Time Market												
10 Min Spin East	5.20	3.96	5.78	3.07	6.38	4.84	9.66	16.81	0.98	3.76	8.55	6.86
10 Min Spin West	4.78	3.43	5.30	1.32	2.82	0.28	0.81	4.37	0.63	1.89	7.98	6.21
10 Min Non Synch East	0.01	0.00	0.00	0.01	4.79	4.40	9.20	13.94	0.00	1.30	0.39	0.02
10 Min Non Synch West	0.00	0.00	0.00	0.00	1.58	0.02	0.54	2.86	0.00	0.01	0.00	0.00
30 Min East	0.00	0.00	0.00	0.00	0.49	0.02	0.37	6.24	0.00	0.00	0.00	0.00
30 Min West	0.00	0.00	0.00	0.00	0.49	0.01	0.12	1.41	0.00	0.00	0.00	0.00
Regulation East	61.28	71.52	73.06	53.62	55.93	50.95	48.17	52.42	46.56	47.21	59.03	57.50
Regulation West	61.28	71.52	73.06	53.62	55.93	50.95	48.17	52.42	46.56	47.21	59.03	57.50

NYISO In City Energy Mitigation (NYC Zone) 2006 - 2007

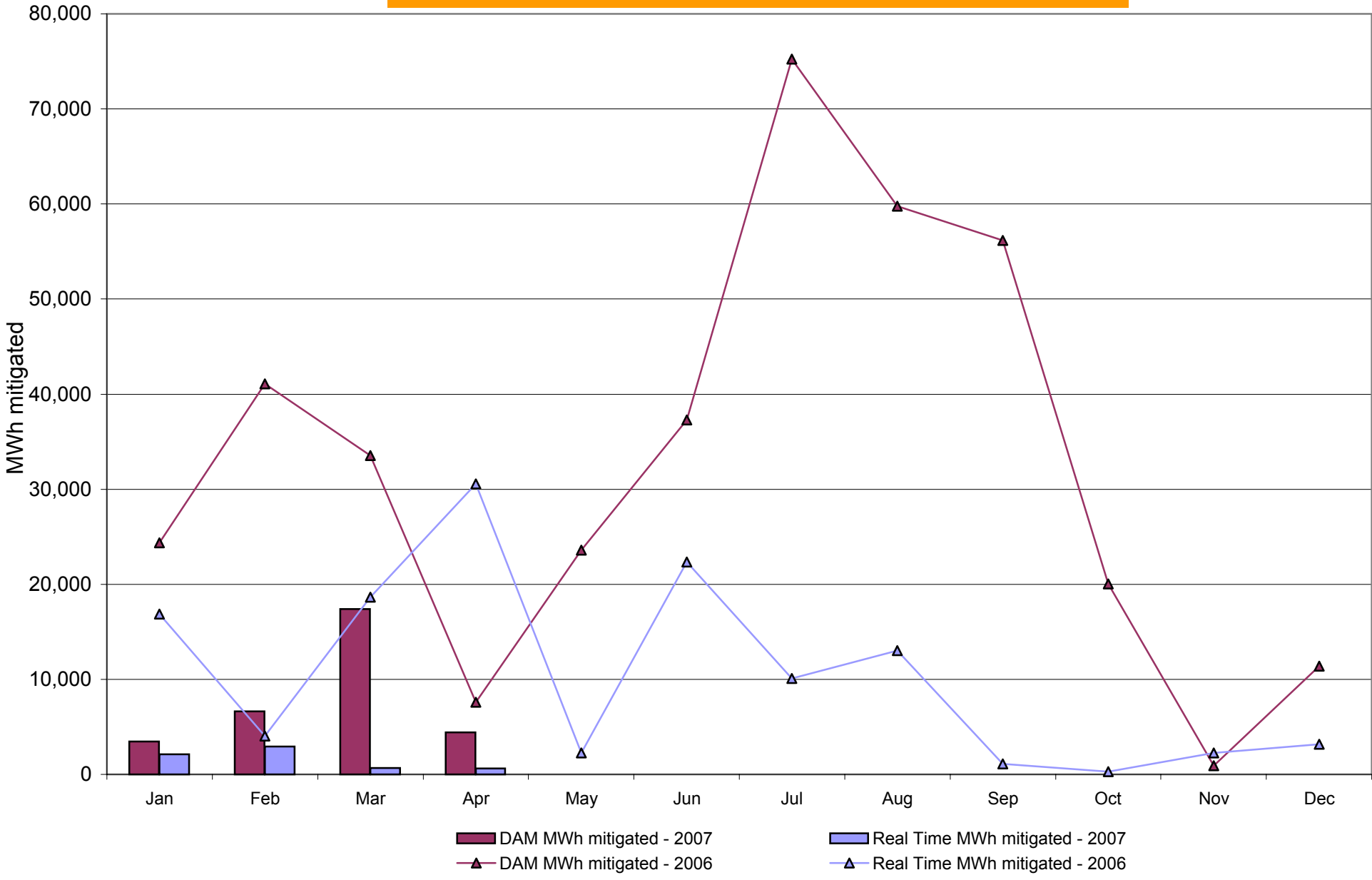
Percentage of committed unit-hours mitigated

This chart shows energy mitigation of the generating units in the NYC zone. Only hours during which a generating unit is scheduled are counted toward the 100%. If a unit's bid is mitigated at any point during an hour, that entire hour is counted as mitigated.

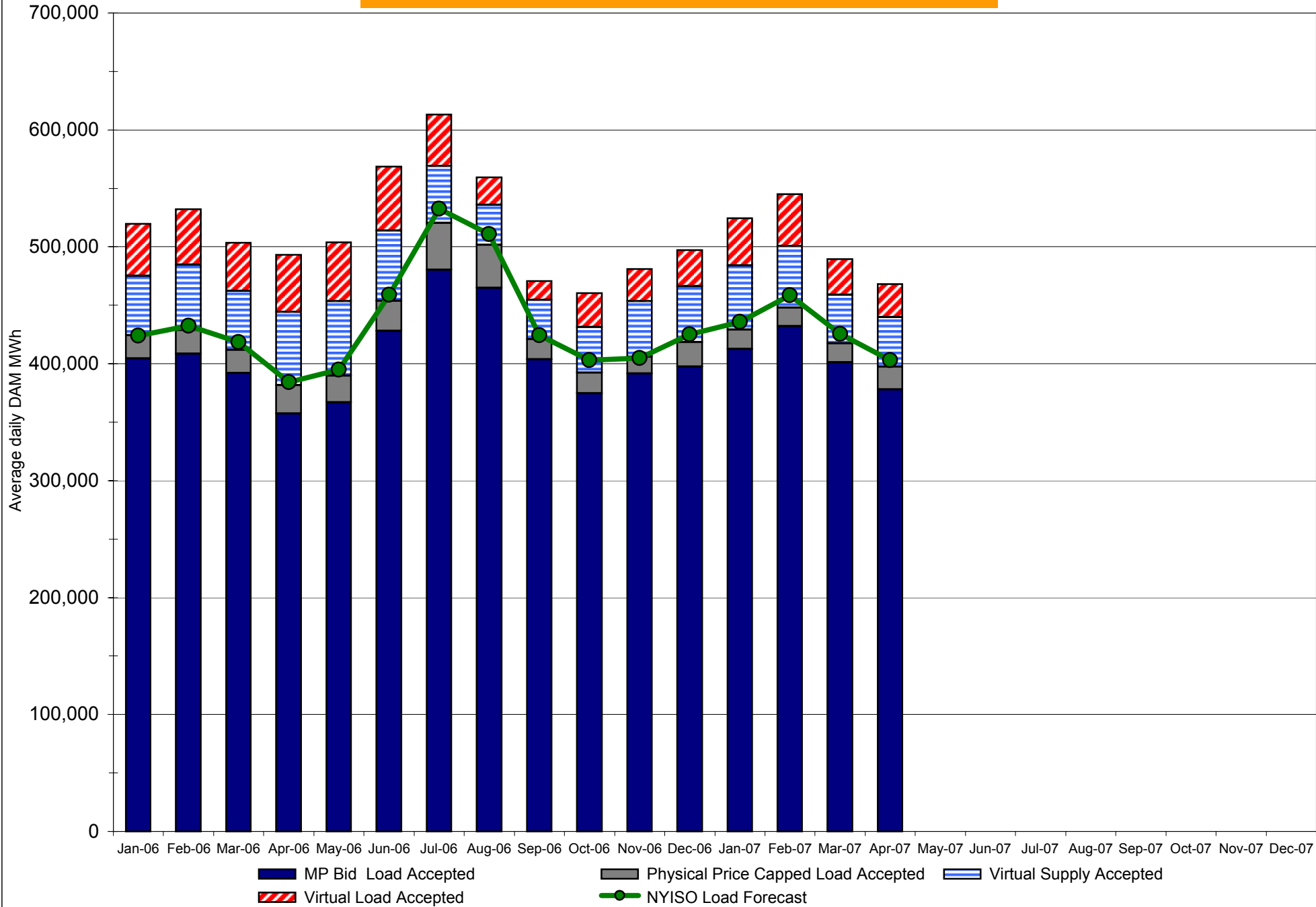


NYISO In City Energy Mitigation (NYC Zone) 2006 - 2007

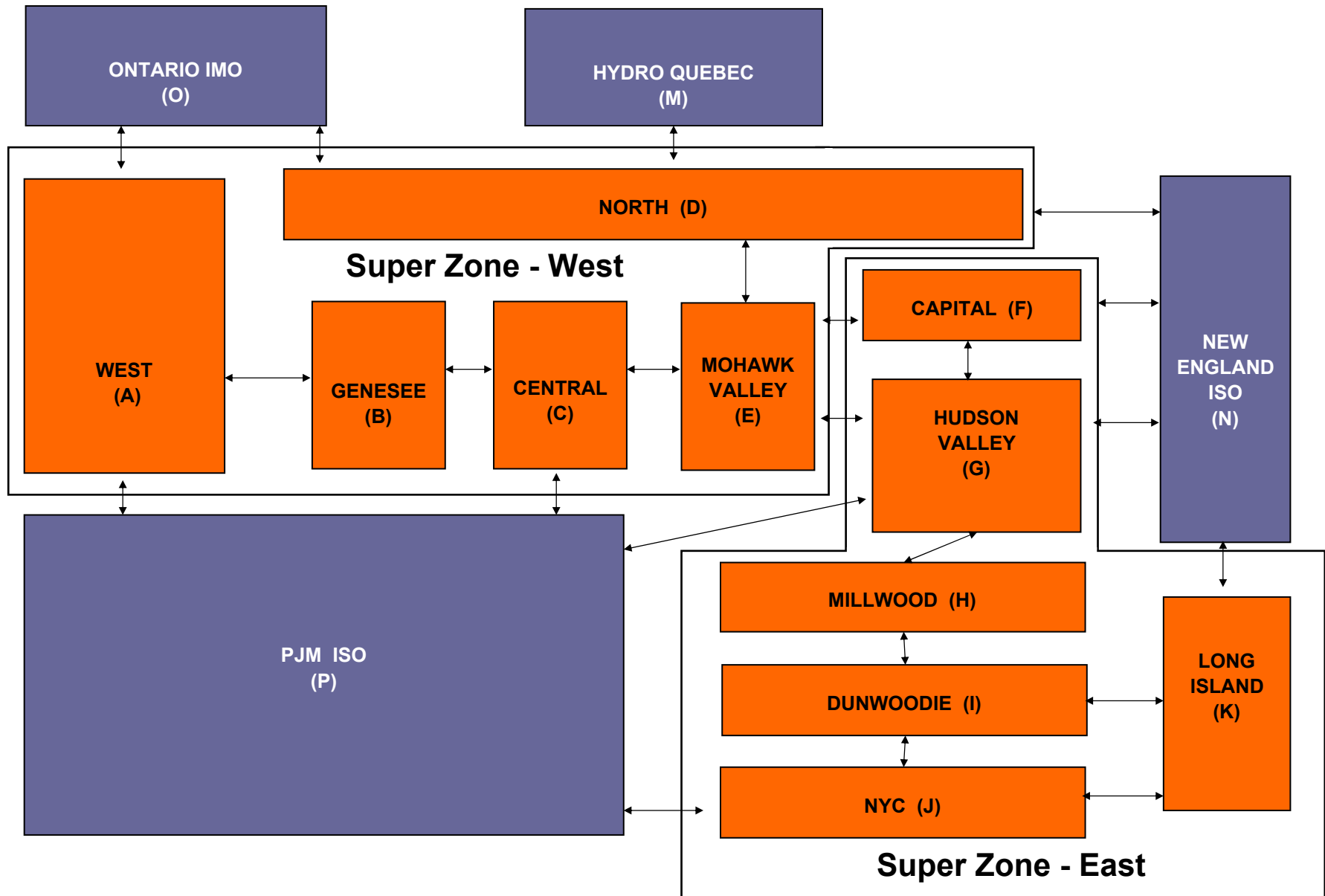
Monthly megawatt hours mitigated



NYISO Average Daily DAM Load Bid Summary



NYISO LBMP ZONES



Billing Codes for Chart 4-C

Chart 4-C Category Name	Billing Code	Billing Category Name
Bid Production Cost Guarantee Balancing	81203	Balancing NYISO Bid Production Cost Guarantee - Internal Units
Bid Production Cost Guarantee Balancing	81204	Balancing NYISO Bid Production Cost Guarantee - External Units
Bid Production Cost Guarantee Balancing	81205	Balancing NYISO Bid Production Cost Guarantee Expenditure due to Curtailed Imports
Bid Production Cost Guarantee Balancing	81208	Balancing NYISO Bid Production Cost Guarantee - Internal Units
Bid Production Cost Guarantee Balancing	81209	Balancing NYISO Bid Production Cost Guarantee - External Units
Bid Production Cost Guarantee Balancing	81213	Balancing NYISO Bid Production Cost Guarantee Expenditure due to Curtailed Imports
Bid Production Cost Guarantee DAM	81201	DAM NYISO Bid Production Cost Guarantee - Internal Units
Bid Production Cost Guarantee DAM	81202	DAM NYISO Bid Production Cost Guarantee - External Units
Bid Production Cost Guarantee DAM	81206	DAM NYISO Bid Production Cost Guarantee - Internal Units
Bid Production Cost Guarantee DAM	81207	DAM NYISO Bid Production Cost Guarantee - External Units
Bid Production Cost Guarantee DAM Virtual	81501	DAM Virtual Bid Production Cost Guarantee
DAM Contract Balancing	81315	DAM Contract Balancing
DAM Contract Balancing	81317	DAM Contract Balancing
Local Reliability Balancing	81002	Balancing Local Reliability Bid Production Cost Guarantee
Local Reliability DAM	81001	DAM Local Reliability Bid Production Cost Guarantee
NYISO Cost of Operations	80901	NYISO Cost Of Operations
NYISO Cost of Operations	80902	NYISO Cost Of Operations
NYISO Cost of Operations	83501	NYISO Cost Of Operations
NYISO Cost of Operations	83502	NYISO Cost Of Operations
Residuals Balancing	81302	Balancing Market Energy Residual
Residuals Balancing	81304	Balancing Market Loss Residual
Residuals Balancing	81305	Balancing Market Congestion Balancing
Residuals Balancing	81306	Emergency Energy Purchases
Residuals Balancing	81307	Emergency Energy Sales
Residuals Balancing	81309	Balancing Market Energy Residual
Residuals Balancing	81311	Balancing Market Loss Residual
Residuals Balancing	81312	Balancing Market Congestion Balancing
Residuals Balancing	81313	Emergency Energy Purchases
Residuals Balancing	81314	Emergency Energy Sales
Residuals DAM	81301	Day Ahead Market Energy Residual
Residuals DAM	81303	Day Ahead Market Loss Residual
Residuals DAM	81308	Day Ahead Market Energy Residual
Residuals DAM	81310	Day Ahead Market Loss Residual