

Price Correction Update

Billing and Price Correction Task Force
October 6, 2005

Nicole Bouchez, Ph.D.

Sr. Economist

Market Monitoring and Performance

Price reservation and correction summary:

KEY:

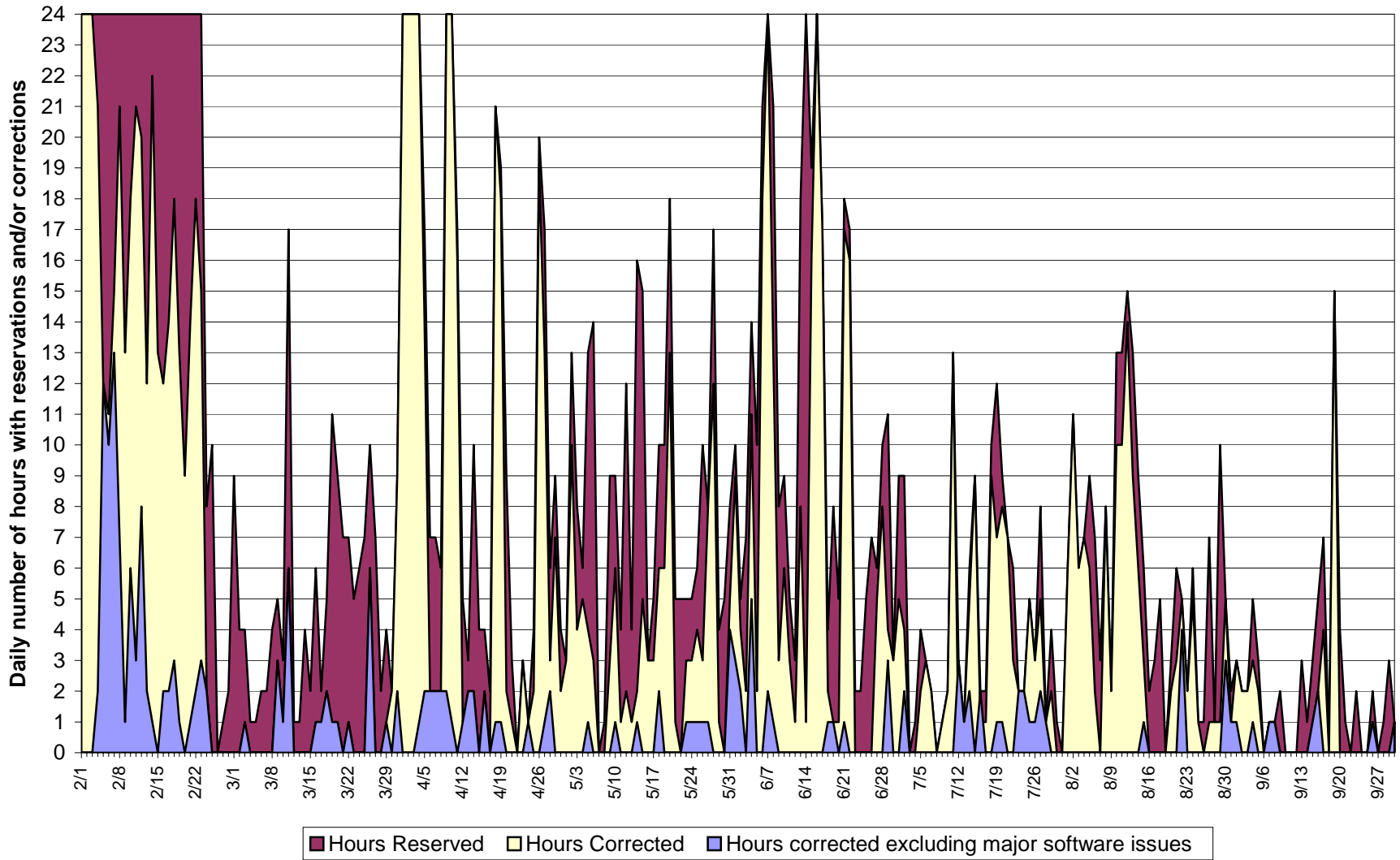
	reserved
	reserved and corrected
	reserved and released

September	0	1	2	3	4	5	6	7	8	9	10	11	12	13	14	15	16	17	18	19	20	21	22	23	Hours Reserved	Hours With Corrections	Hours Released		
9/1/05																									3	3	0		
9/2/05																										2	2	0	
9/3/05																										2	2	0	
9/4/05																										5	3	2	
9/5/05																										3	2	1	
9/6/05																										0	0	0	
9/7/05																										1	1	0	
9/8/05																										1	1	0	
9/9/05																										2	0	2	
9/10/05																										0	0	0	
9/11/05																										0	0	0	
9/12/05																										0	0	0	
9/13/05																										3	0	3	
9/14/05																										1	0	1	
9/15/05																										3	1	2	
9/16/05																										5	2	3	
9/17/05																										7	4	3	
9/18/05																										0	0	0	
9/19/05																										15	15	0	
9/20/05																										4	0	4	
9/21/05																										1	0	1	
9/22/05																										0	0	0	
9/23/05																										2	0	2	
9/24/05																										0	0	0	
9/25/05																										0	0	0	
9/26/05																										2	1	1	
9/27/05																										0	0	0	
9/28/05																										1	0	1	
9/29/05																										3	0	3	
9/30/05																										1	1	0	
Monthly Totals																										67	38	29	Total
																										2.2	1.3	1.0	Average
																										15	15	4	Max
																										0	0	0	Min

10/06/2005

"for discussion only"

Daily Hours with Corrections Excluding Major Known Software Issues February 1 2005- September 30 2005



10/06/2005

"for discussion only"

2005 Percentage of Hours Corrected (Real Time)

Month	Percent of Hours Corrected	Percent of Hours with Corrections Excluding Major Software Issues
February	57%	12%
March	5%	4%
April	39%	3%
May	16%	2%
June	30%	3%
July	14%	3%
August	17%	1%
September	5%	1%