

# **Public (Pricing) Datamart Enhancements**

*Prince Philip*  
*Business Intelligence*  
**New York Independent System Operator**

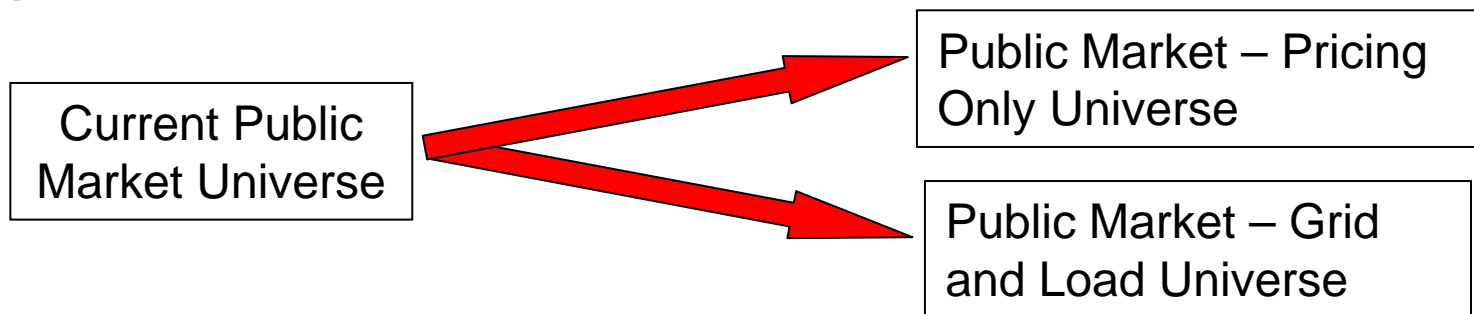
*BITF – Business Intelligence Task Force*  
*08/17/2010*

# Public (Pricing) Datamart Enhancements

- ◆ Scheduled for August 18<sup>th</sup>, 2010
- ◆ Universe redesign
- ◆ Enhanced query capabilities
- ◆ More frequent data loads
- ◆ Conversion instructions for personal queries

# Universe Redesign

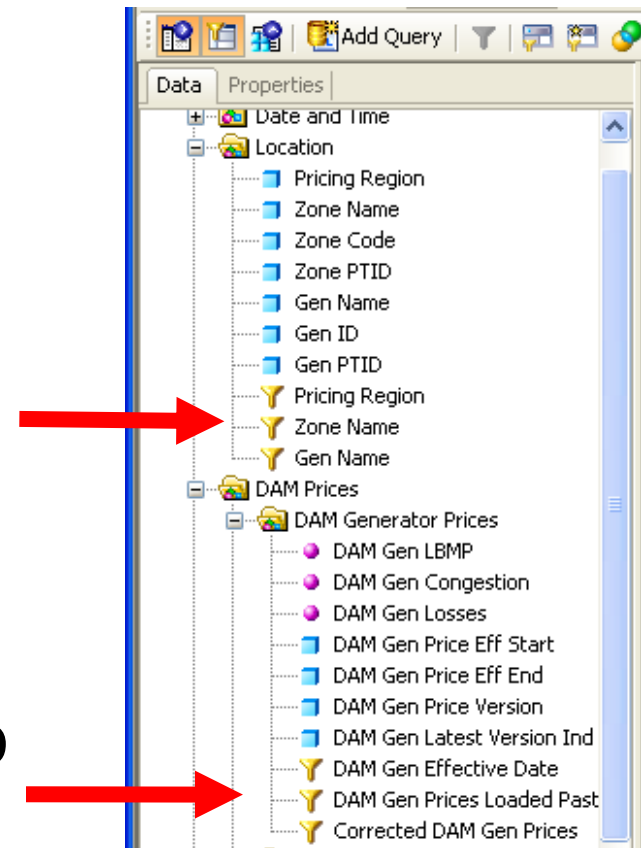
- ◆ The current Public Market universe will be replaced with two new universes



- ◆ The new universes improve performance & usability
- ◆ Personal queries must be converted to use the new universes

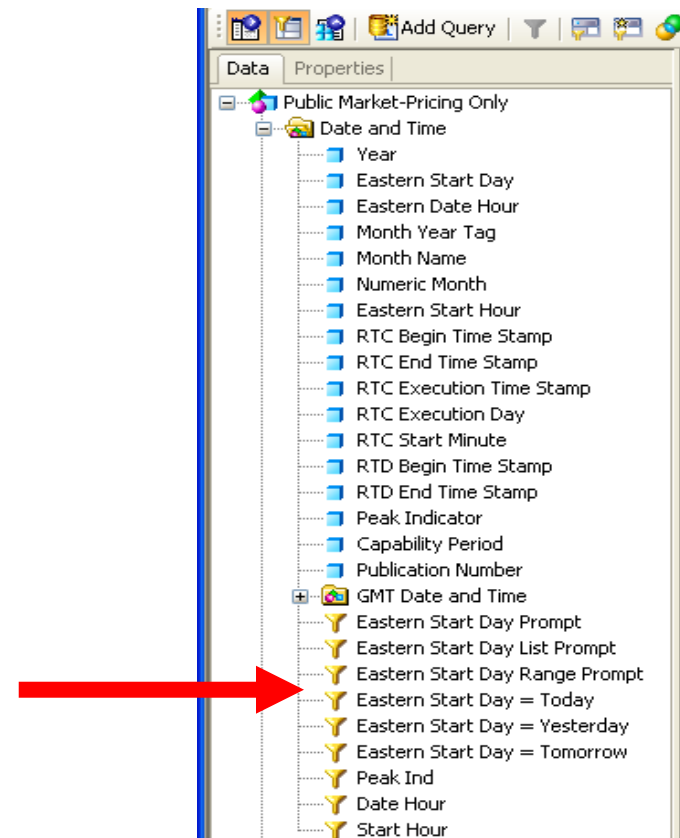
# Enhanced Query Capabilities

- ◆ Performance Improvements
- ◆ Query row limit will now be based on the result set
- ◆ Filters – Each universe includes pre-defined filters to facilitate query creation.



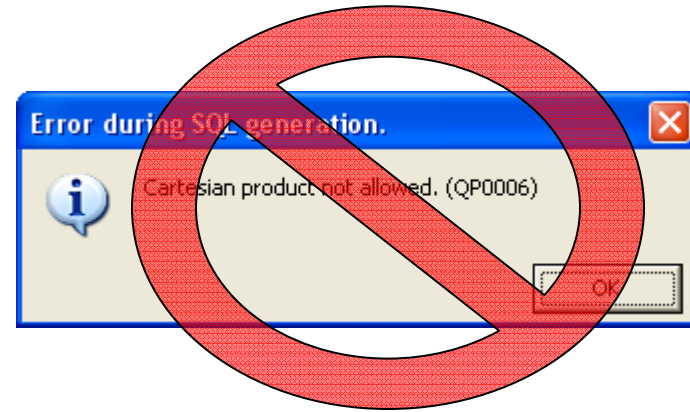
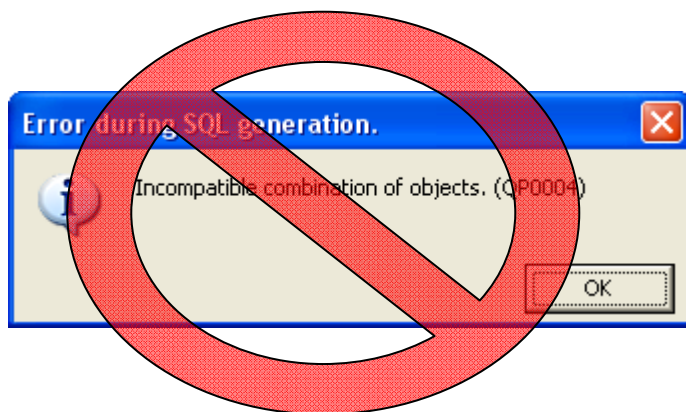
# Enhanced Query Capabilities

- ◆ Filters – Each universe includes dynamic date filters to allow scheduling of reports.



# Enhanced Query Capabilities

- ◆ Pricing Only Universe
  - ◆ All objects are 100% compatible internally
  - ◆ Eliminates Cartesian Products and Incompatible Combinations from the Pricing Only universe
  - ◆ Improved Version handling



# Enhanced Query Capabilities

- ◆ Pricing Only Universe

- ◆ ability to run “latest version” queries, OR point in time queries
- ◆ If a user selects a single type of prices: RTD Gen LBMP, they will receive all price versions of that data unless they specify “latest version”, or specify an effective date

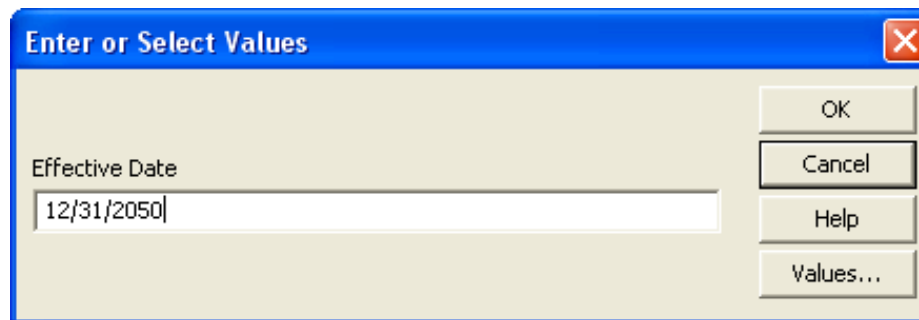
 RTD Gen Latest Version Ind Equal to 'Y'

OR

 RTD Gen Effective Date

# Enhanced Query Capabilities

- ◆ Pricing Only Universe
  - ◆ If a user chooses multiple types of prices: RTD Gen LBMP, and RTD Zonal LBMP; system prompts to choose the effective date of the price combination
  - ◆ For the latest version of each, enter a future date (default)



Enter or Select Values

Effective Date

12/31/2050

OK

Cancel

Help

Values...



# Enhanced Query Capabilities

- ◆ Grid and Load Universe
  - ◆ Compatibility Clarified and Improved
  - ◆ “Time” objects are compatible with all Classes
  - ◆ Each Class is a self-contained set of Dimensions and Measures – removes ambiguity as to which dimensions belong with which measures
  - ◆ Queries can be quickly created by dragging an entire class of objects to the result panel
  - ◆ No versioned data

# Pricing Data Loads

- ◆ Public (Pricing) Datamart may be loaded at regular intervals throughout the day
- ◆ The DSS home page will display the time of the most recent data load
- ◆ The CSV files posted to the public website will continue to be the source for the most up to date Pricing and Grid Data
- ◆ No impacts on Customer Settlements Datamart

# Conversion: Personal Queries

- ◆ Convert Web Intelligence (Web-I) documents from using the current universe to the new universes.
- ◆ Look and feel of the documents do not change
- ◆ No such conversion process exists for Desktop Intelligence Documents
- ◆ Desktop Intelligence documents must be rewritten

# Convert Personal Web-I docs

## ◆ Summary

- ◆ Step 1: Examine current documents to determine which of the new universes includes the objects.
- ◆ Step 2: Modify document; update old universe to new universe
- ◆ Step 3: Replace old objects with new objects
- ◆ Step 4: “Save as” back to favorites folder

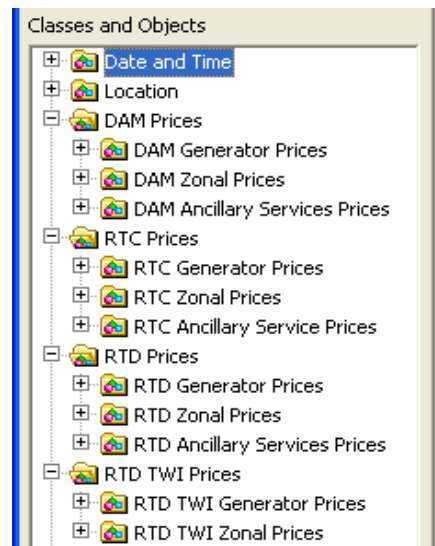
# Convert Personal Web-I docs

- ◆ Step 1
  - ◆ Examine current documents and determine which of the new universes includes the objects.
  - ◆ Determine whether the document contains both price objects and grid/load objects

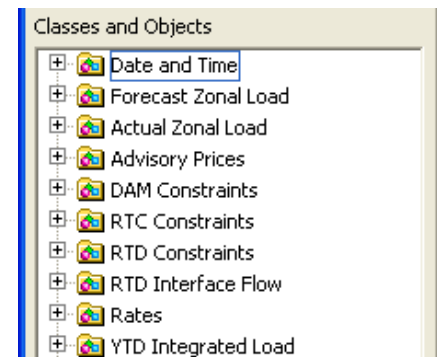
# Convert Personal Web-I docs

- ◆ If the document has objects from both universes
  - ◆ Form separate queries – all price objects in one query; all grid/load objects in a separate query.
  - ◆ Each query must include the same date and location dimension objects, and include similar query criteria.

## Pricing Query

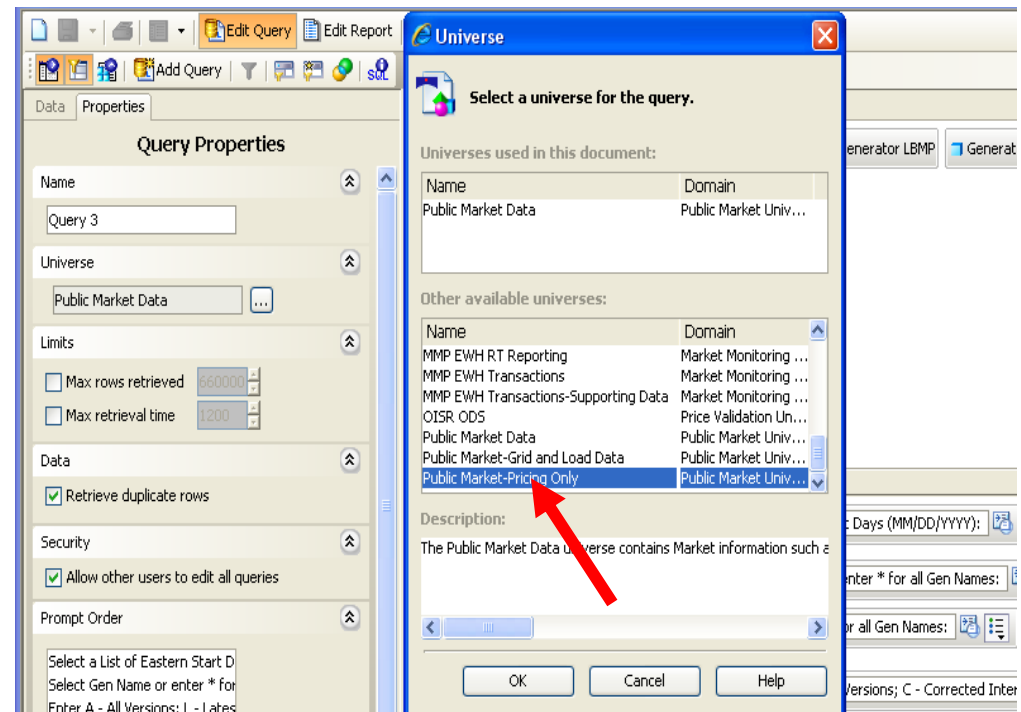


## Grid and Load Query



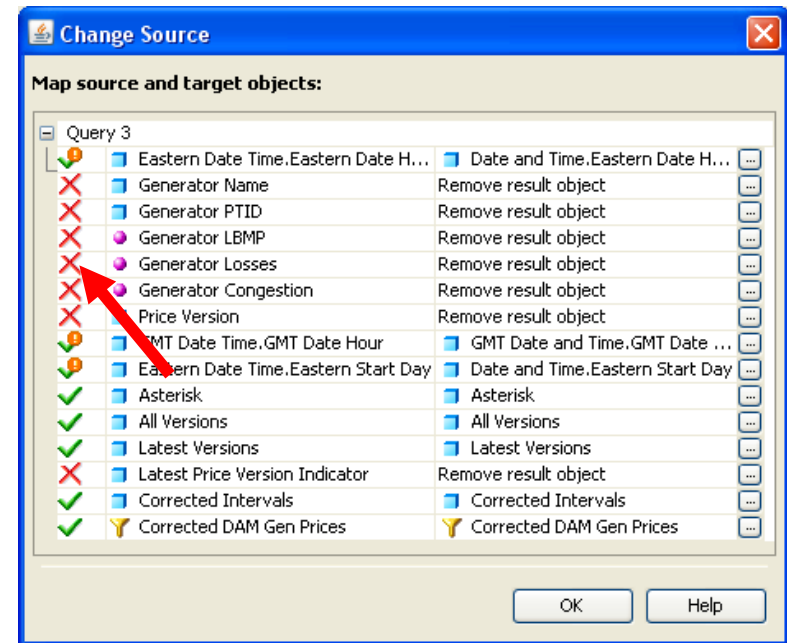
# Convert Personal Web-I docs

- ◆ Step 2: Update Universe
  - ◆ Edit Query
  - ◆ Click on Properties tab
  - ◆ Click button next to universe name
  - ◆ Change old universe to new universe



# Convert Personal Web-I docs

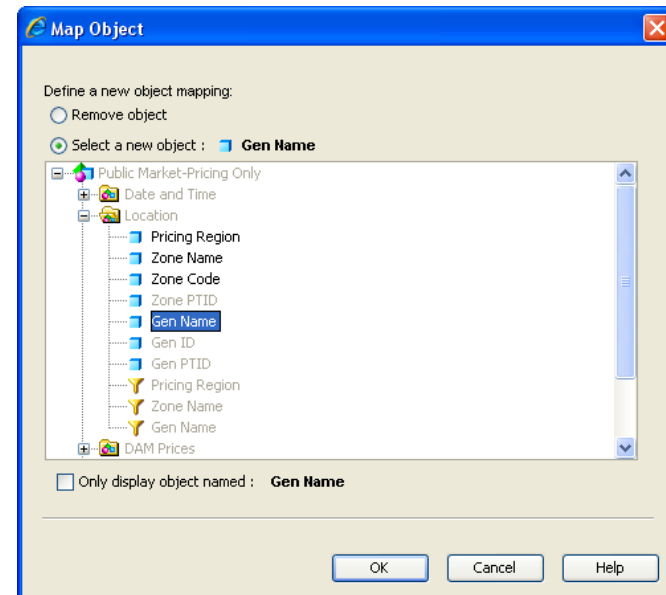
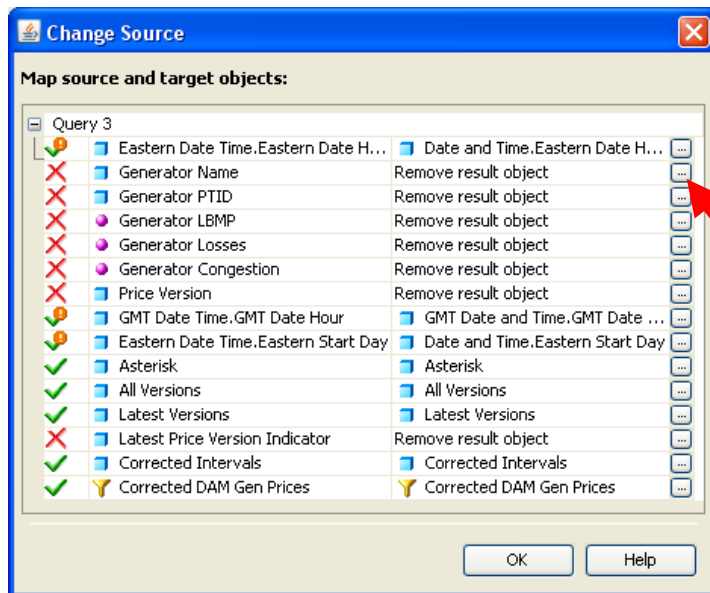
- ◆ Step 3: Replace Objects
  - ◆ View the list of objects
  - ◆ Objects marked with a **Green Check** – no action is needed
  - ◆ Objects marked with an **Orange Exclamation** – the class name has changed, but no action is needed
  - ◆ Objects marked with a **Red X** – the old object must be mapped to a new object, or it will be removed from the query





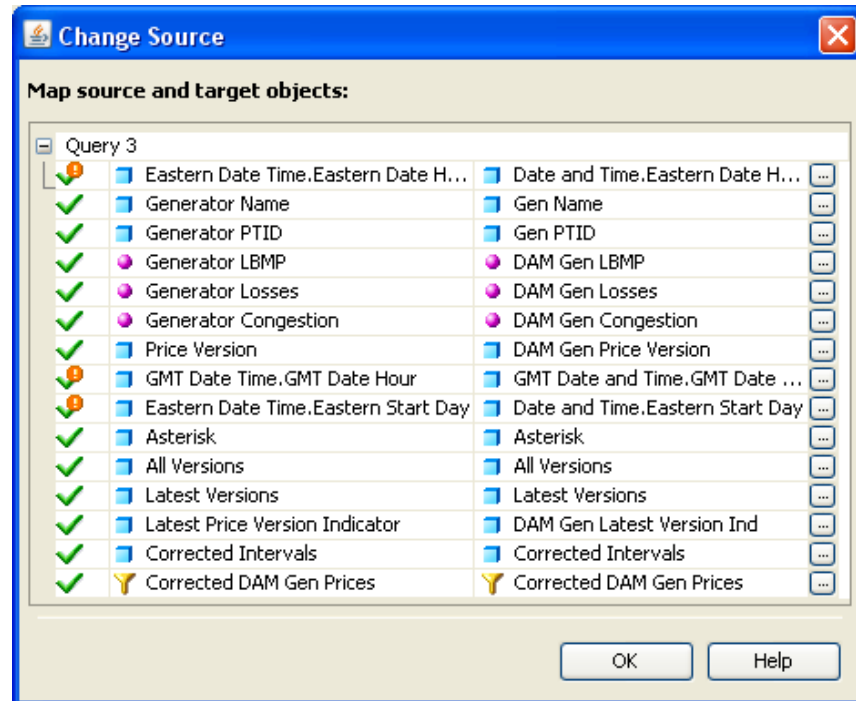
# Convert Personal Web-I docs

- ◆ Step 3: Replace Objects
  - ◆ Click the ellipsis button (...) next to an object to re-map
  - ◆ navigate to the new object and select it.
  - ◆ Click OK



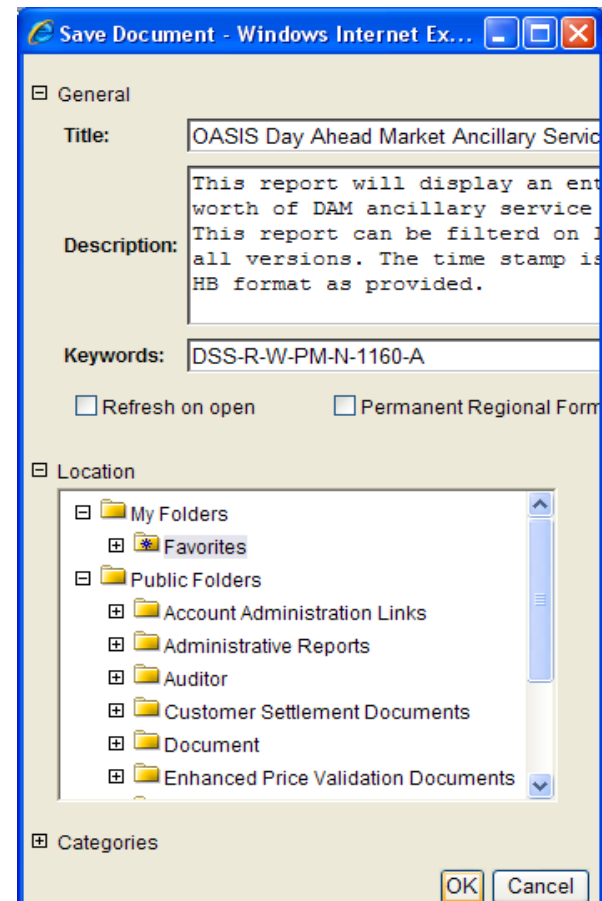
# Convert Personal Web-I docs

- ◆ Step 3: Replace Objects
  - ◆ Repeat prior steps to re-map all of the **Red X** objects,
  - ◆ Click OK to return to the query



# Convert Personal Web-I docs

- ◆ Step 4: Save the document
  - ◆ Click 'Edit Report', to save the changes
  - ◆ Click 'Save As' to save to favorites folder
  - ◆ **Note:** *Must perform a "Save As"*

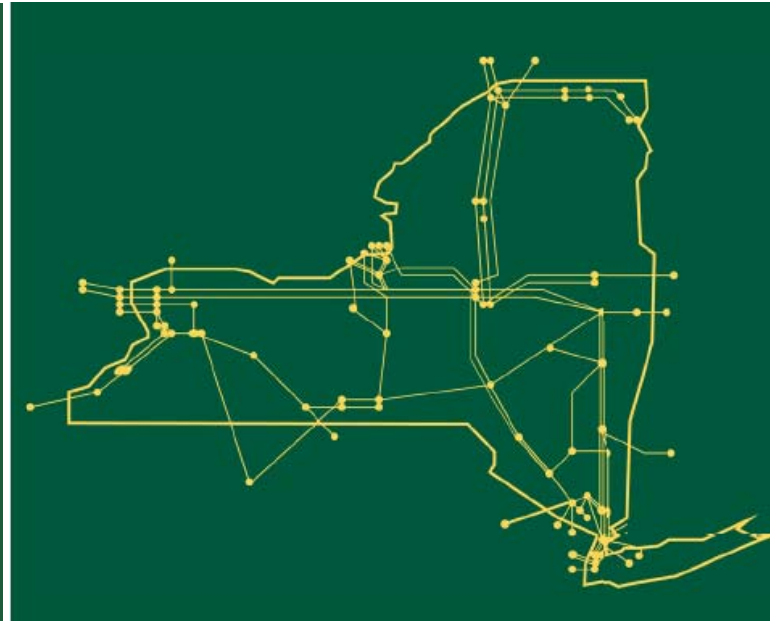


# Convert Personal Web-I docs

## ◆ Summary

- ◆ Step 1: Examine current documents to determine which of the new universes includes the objects.
- ◆ Step 2: Modify document; update old universe to new universe
- ◆ Step 3: Replace old objects with new objects
- ◆ Step 4: “Save as” back to favorites folder

The New York Independent System Operator (NYISO) is a not-for-profit corporation that began operations in 1999. The NYISO operates New York's bulk electricity grid, administers the state's wholesale electricity markets, and conducts comprehensive planning for the state's bulk electricity system.



*[www.nyiso.com](http://www.nyiso.com)*